

PlanGrid Task Report - Jul 19, 2024

Prepared by Stephen Tassinaro

Jul 19, 2024

Description

16 tasks in this report.

Contents

#26 [CNTL 512] [NEW] SEC Line voltage cover.	2
#25 [CURT 501] [NEW] Air curtain power.	2
#24 [CURT 502] [NEW] Air curtain diverter box.	3
#23 [UNIT 500] [NEW] Equipment labels.	3
#22 [UNIT 501] [NEW] Equipment low voltage diagrams.....	5
#21 [UNIT 505] [NEW] Equipment wiring portals.	6
#20 [REFG 999] [NEW] Spray Foam In Goosenecks	7
#15 [CNTL 508] [NEW] Controls labeling.	8
#14 [CNTL 509] [NEW] Ansul pull labeling.	10
#13 [CNTL 999] [NEW] Humidity Sensors	11
#11 [EXHA 501] [NEW] Restroom fan is not secured.....	12
#10 [EXHA 507] [NEW] Exhaust fan drain line.....	13
#9 [EXHA 511] [NEW] Grease exhaust duct curb cap.....	14
#6 [HOOD 508] [NEW] Sidejet arm angle bracket. Hoods 2 & 3	15
#5 [UNIT 508] [NEW] Outdoor air intakes.	18
#4 [UNIT 514] [NEW] Equipment gas piping.	19

#26 [CNTL 512] [NEW] SEC Line voltage cover.

Status Open	Start Date Jul 18, 2024
Type Planned Work	Created Jul 18, 2024 11:29 AM stephent@nationaltab.com
Description Line voltage cover in SEC low voltage panel is missing and needs to be installed (EC).	Last Updated Jul 18, 2024 11:29 AM

#25 [CURT 501] [NEW] Air curtain power.

Status Open	Start Date Jul 18, 2024
Type Planned Work	Created Jul 18, 2024 11:29 AM stephent@nationaltab.com
Description Rear exit air door not functional. Awaiting replacement part.	Last Updated Jul 18, 2024 11:29 AM

#24 [CURT 502] [NEW] Air curtain diverter box.

Status

Open

Start Date

Jul 18, 2024

Type

Planned Work

Created

Jul 18, 2024 11:29 AM
stephent@nationaltab.com

Description

Air curtain diverter box is not installed. should be bolted to wall, slid forward, and flush with door header.

Last Updated

Jul 19, 2024 2:36 PM

Photos



IMG_3457

Stephen Tassinaro

Jul 19, 2024 2:36 PM

#23 [UNIT 500] [NEW] Equipment labels.

Status

Open

Start Date

Jul 18, 2024

Type

Planned Work

Created

Jul 18, 2024 11:29 AM
stephent@nationaltab.com

Description

Last Updated

Label all equipment per specification to coincide with schedule.

Jul 18, 2024 11:29 AM

#22 [UNIT 501] [NEW] Equipment low voltage diagrams

Status

Open

Start Date

Jul 18, 2024

Type

Planned Work

Created

Jul 18, 2024 11:29 AM
stephent@nationaltab.com

Description

Equipment missing
laminated copy of controls
detail low voltage wiring
diagrams.

Last Updated

Jul 19, 2024 2:36 PM

Photos



IMG_3467

Stephen Tassinaro

Jul 19, 2024 2:36 PM

#21 [UNIT 505] [NEW] Equipment wiring portals.

Status

Open

Start Date

Jul 18, 2024

Type

Planned Work

Created

Jul 18, 2024 11:29 AM
stephent@nationaltab.com

Description

Equipment wiring portal missing or not utilized correctly. Portal cover should be secured and all wiring should be routed via portal cover with conduit connectors or low voltage wiring grommets to protect wiring from shorts.

Last Updated

Jul 18, 2024 11:29 AM

#20 [REFG 999] [NEW] Spray Foam In Goosenecks

Status

Open

Start Date

Jul 18, 2024

Type

Planned Work

Created

Jul 18, 2024 11:29 AM
stephent@nationaltab.com

Description

WIC/WIF spray foam not installed to seal goosenecks on rooftop. PVC not glued together.

Last Updated

Jul 19, 2024 2:37 PM

Photos



IMG_3493

Stephen Tassinaro

Jul 19, 2024 2:37 PM



IMG_3480

Stephen Tassinaro

Jul 19, 2024 2:37 PM

#15 [CNTL 508] [NEW] Controls labeling.

Status
Open

Start Date
Jul 15, 2024

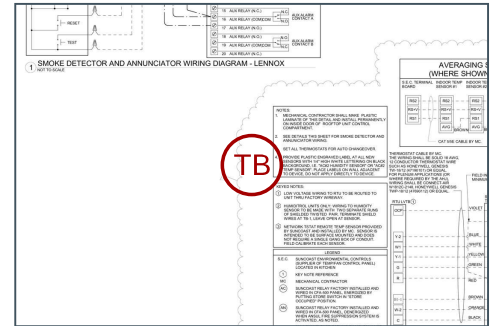
Sheet
M-701

Type
Planned Work

Created
Jul 15, 2024 6:05 PM
stephent@nationaltab.com

Description
Label all sensors, humidistats, thermostats, smoke annunciators and remote space mounted OADs, MODs, VFD's for which piece of equipment they serve.

Last Updated
Jul 18, 2024 10:04 AM



Photos



IMG_3415

Stephen Tassinaro

Jul 15, 2024 6:16 PM

#14 [CNTL 509] [NEW] Ansul pull labeling.

Status

Open

Start Date

Jul 15, 2024

Sheet

M-201

Type

Planned Work

Created

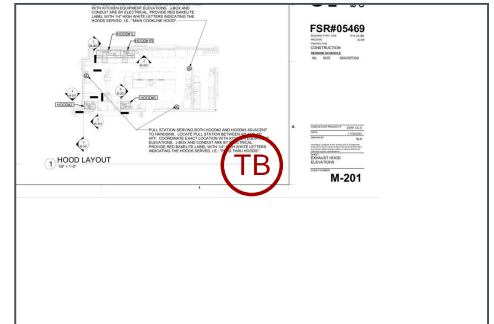
Jul 15, 2024 6:05 PM
stephent@nationaltab.com

Description

Label all ansul pull stations for which hoods they serve.

Last Updated

Jul 18, 2024 10:05 AM



Photos



IMG_3399

Stephen Tassinaro

Jul 15, 2024 6:16 PM

#13 [CNTL 999] [NEW] Humidity Sensors

Status
Open

Start Date
Jul 15, 2024

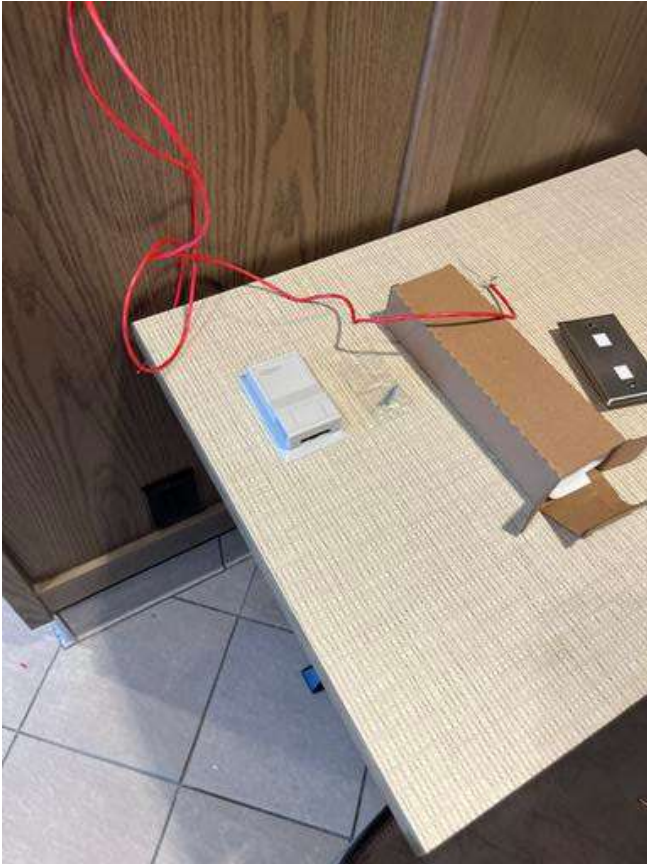
Type
Planned Work

Created
Jul 15, 2024 6:05 PM
stephent@nationaltab.com

Description
Humidity sensors have not yet been installed.

Last Updated
Jul 19, 2024 2:38 PM

Photos



IMG_3456
Stephen Tassinaro
Jul 19, 2024 2:38 PM



IMG_3415
Stephen Tassinaro
Jul 15, 2024 6:16 PM

#11 [EXHA 501] [NEW] Restroom fan is not secured.

Status

Open

Start Date

Jul 15, 2024

Type

Planned Work

Created

Jul 15, 2024 6:05 PM
stephent@nationaltab.com

Description

Restroom fan is to be secured with screws at all corners of curb.

Last Updated

Jul 15, 2024 6:17 PM

Photos



IMG_3402

Stephen Tassinaro

Jul 15, 2024 6:17 PM

#10 [EXHA 507] [NEW] Exhaust fan drain line.

Status
Open

Start Date
Jul 15, 2024

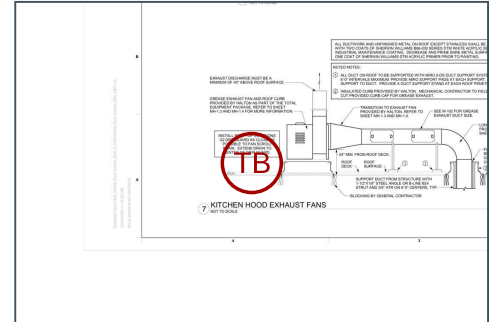
Sheet
M-501

Type
Planned Work

Created
Jul 15, 2024 6:05 PM
stephent@nationaltab.com

Description
Exhaust fan drain is not properly installed, pitched, or routed to center of drip guard per detail. If gas piping is used, will need to be painted for rust protection.

Last Updated
Jul 18, 2024 10:07 AM



Photos



IMG_3401

Stephen Tassinaro
Jul 15, 2024 6:17 PM

#9 [EXHA 511] [NEW] Grease exhaust duct curb cap.

Status

Open

Start Date

Jul 15, 2024

Type

Planned Work

Created

Jul 15, 2024 6:05 PM
stephent@nationaltab.com

Description

Grease duct curb cap is to be screwed at all corners along with a full perimeter weld between curb cap and duct.

Last Updated

Jul 15, 2024 6:17 PM

Photos



IMG_3400

Stephen Tassinaro

Jul 15, 2024 6:17 PM

#6 [HOOD 508] [NEW] Sidejet arm angle bracket. Hoods 2 & 3

Status

Open

Start Date

Jul 15, 2024

Sheet

MH-1.1

Type

Planned Work

Created

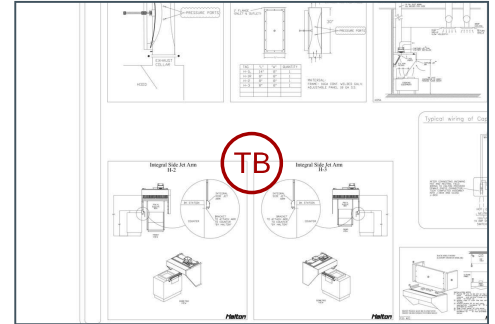
Jul 15, 2024 6:05 PM
stephent@nationaltab.com

Description

The Halton supplied angle bracket that connects the integral sidejet arm to the counter is missing or not installed correctly. Secure bracket to arm and bracket to counter underneath removeable fry dump via stainless steel rivets. Hoods 2 & 3.

Last Updated

Jul 18, 2024 10:07 AM



Photos



IMG_3396

Stephen Tassinaro

Jul 15, 2024 6:18 PM



IMG_3397

Stephen Tassinaro

Jul 15, 2024 6:18 PM



IMG_3398

Stephen Tassinaro

Jul 15, 2024 6:18 PM

#5 [UNIT 508] [NEW] Outdoor air intakes.

Status

Open

Start Date

Jul 15, 2024

Type

Planned Work

Created

Jul 15, 2024 6:05 PM
stephent@nationaltab.com

Description

OAs must be caulked/
gasketed to prevent water
infiltration.

Last Updated

Jul 15, 2024 6:18 PM

Photos



IMG_3411

Stephen Tassinaro

Jul 15, 2024 6:18 PM

#4 [UNIT 514] [NEW] Equipment gas piping.

Status

Open

Start Date

Jul 15, 2024

Type

Planned Work

Created

Jul 15, 2024 6:05 PM
stephent@nationaltab.com

Description

Equipment missing gas grommet, gas startups incomplete, or gas piping is not constructed/supported per normal CFA specifications (incorrect drip leg/missing inverted trap/flex piping connections). Gas valves off at this time.

Last Updated

Jul 15, 2024 6:18 PM

Photos



IMG_3408

Stephen Tassinaro

Jul 15, 2024 6:18 PM