

HES SYSTEM

MECHANICAL CONTRACTOR TO PROVIDE AND INSTALL SPOONCAST HES SYSTEM FOR ALL NEW DOORS. SEE HOOD FAN/EQUIPMENT INTAKE LOCK WIRING DIAGRAM ON SHEET M41 FOR MORE INFORMATION.

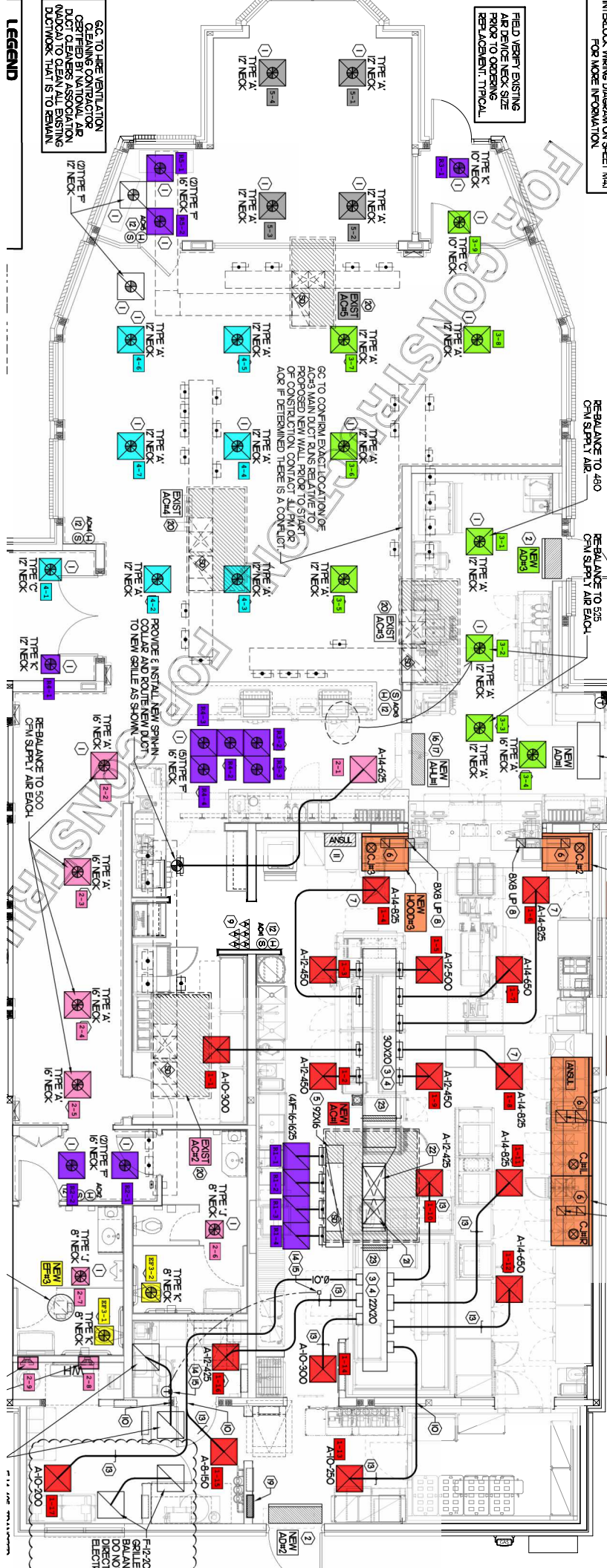
FIELD VERIFY EXISTING AIR DEVICE NECK SIZE PRIOR TO OPERING REPLACEMENT. TYPICAL.

HOLD DUCT AT ALL AC UNITS AS HIGH AS POSSIBLE DUE TO LIMITED CLEARANCE ABOVE CEILING.

TO AIR DOOR SCHEDULE AND AIR CURTAIN WIRING DIAGRAM FOR FURTHER INFORMATION. COORDINATE EXACT LOCATION FOR SWITCHES WITH KITCHEN EQUIPMENT AND PLANS.

(ON THE DOOR AT 6' OFF THE INSIDE FACE OF WALL ADJACENT TO AIR CURTAIN MECHANICAL CONTRACTOR SHALL ADJUST AIR DEFLECTORS TOWARD AIR DIVERTER BOX.)

ENSURE CONDITIONS SHOWN ARE MET. MECHANICAL CONTRACTOR SHALL FIELD VERIFY EXACT LOCATIONS OF ALL DUCT AND DEFLECTORS. IF MAJOR OCCUR IN FIELD CONTACT CHECK-FL-A CONSTRUCTION



LEGEND

GO TO HIRE VENTILATION CLEANING CONTRACTOR CERTIFIED BY NATIONAL AIR DUCT CLEANERS ASSOCIATION (NADCA) TO CLEAN ALL EXISTING DUCTWORK THAT IS TO REMAIN.

FIELD VERIFY EXISTING AIR DEVICE NECK SIZE PRIOR TO OPERING REPLACEMENT. TYPICAL.