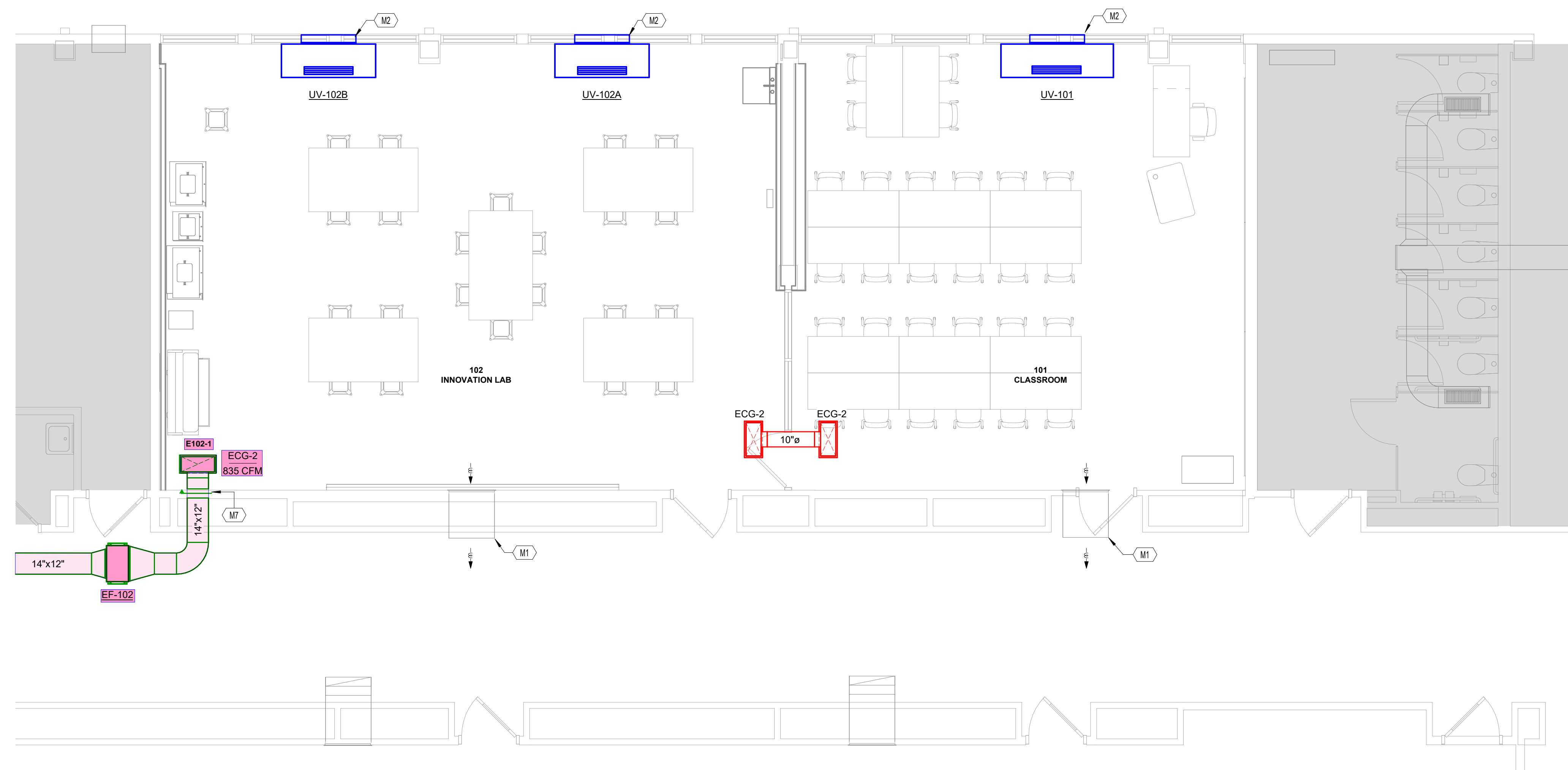


2 FIRST FLOOR DUCTWORK PLAN - CLASSROOMS WING
M101 1/8" = 1'-0"



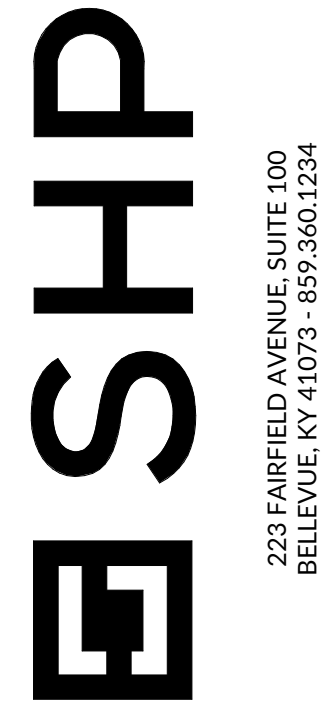
1 ENLARGED FIRST FLOOR DUCTWORK PLAN - CLASSROOMS
M101 1/4" = 1'-0"

GENERAL DUCT PLAN NOTES:

- A. DO NOT ROUTE DUCTWORK OVER ELECTRICAL EQUIPMENT, THROUGH ELECTRICAL ROOMS, ELEVATOR SHAFTS, OR THROUGH INTERIOR EXIT STAIRWELLS UNLESS OTHERWISE NOTED.
- B. INLET AND DISCHARGE DUCTS CONNECTING TO VAV BOXES ARE TO BE THE SAME SIZE AS VAV BOX INLET AND DISCHARGE RESPECTIVELY UNLESS NOTED OTHERWISE.
- C. DUCTS SERVING DIFFUSERS AND GRILLES ARE TO BE THE SAME SIZE AS DIFFUSER NECK SIZE OR GRILLE FACE UNLESS NOTED OTHERWISE.
- D. VAV BOX CONTROLLER ACCESS IS SHOWN AS A HASHED BOX.
- E. AIR TRANSFER DUCTS ARE 14" X 14" UNLESS NOTED OTHERWISE, CONTRACTOR TO PROVIDE ADDITIONAL TRANSFER OPENINGS ABOVE CEILING AS NEEDED FOR AIR RETURN.
- F. PROVIDE AT LEAST 3 STRAIGHT DUCT DIAMETERS AT INLET OF VAV BOXES.
- G. DO NOT USE FLEXIBLE DUCTWORK AT INLET OF VAV BOX.
- H. PROVIDE VOLUME CONTROL DAMPERS IN RUN-OUT DUCT TO ALL SUPPLY AIR DEVICES.
- I. DUCT DIMENSIONS SHOWN ARE INTERNAL DIMENSIONS.

KEYNOTES

- M1 TRANSFER AIR TO DISCHARGE INTO HALLWAY PLENUM.
- M2 TRANSITION INSULATED OUTSIDE AIR DUCT AS REQUIRED TO CONNECT INTO EXISTING OUTSIDE AIR LOUVER. BLANK OFF UNUSED PORTIONS OF OUTSIDE AIR LOUVER.
- M7 DYNAMIC 1.5-HR-RATED FIRE DAMPER EQUAL TO GREENHECK DFD-150X. DAMPER SHALL BE UL 555 RATED WITH A FUSIBLE LINK SET AT 165 DEG F. PROVIDE ACCESS DOOR IN DUCTWORK.
- M8 INSTALL 48 X 12 LOUVER EQUAL TO GREENHECK EHH-401 ADJACENT TO EXISTING LOUVER.



NOTRE DAME ACADEMY
CLASSROOM RENOVATION
1699 Hilton Dr., Park Hills, KY 41011

ISSUANCES

NO.	DATE	DESCRIPTION
A	05-09-25	PERMIT SET

DUCTWORK PLAN - FIRST FLOOR

COMM NO. 2025048.01

M101