

Submittal #233600-04.2 - AIR TERMINAL UNITS - Product Data 233600 - AIR TERMINAL UNITS

Revision	2	Submittal Manager	Connor Galloway (McCownGordon Construction, LLC)
Status	In Review	Date Created	Mar 22, 2023
Issue Date	Mar 22, 2023	Spec Section	233600 - AIR TERMINAL UNITS
Responsible Contractor	Temp-Con, LLC	Received From	
Received Date		Submit By	
Final Due Date	Apr 7, 2023	Lead Time	
Sub Job		Cost Code	
Location		Type	Product Data
Approvers	Connor Galloway (McCownGordon Construction, LLC), Construction Admin (Hoefer Welker, LLC)		
Ball in Court	Connor Galloway (McCownGordon Construction, LLC)		
Distribution	Alex Gerhart (Hoefer Welker, LLC)		



- Reviewed no exceptions.
- Make corrections noted; resubmittal not required.
- Make corrections noted; revise and resubmit indicated items only.
- Revise and resubmit entire submittal.
- Reviewed for coordination/information only; refer to comments if any.

uding rated capacities, furnished specialties, sound-power ratings, ves. 3. Sealants and gaskets. 4. Seismic-restraint devices.

Response	Attachments
Submitted	33145 Grain Valley FPB Submittal r2.pdf (Current)
Pending	
Pending	

Review of this submittal is only for general conformance with the design concept of the project and-for general compliance with those portions of the Contract Documents prepared by Smith & Boucher. Notes, corrections or comments made on the submittals during this review do not relieve the Contractor from responsibility for: Compliance with the requirements of the plans and specifications; Dimensions to be confirmed and correlated at the jobsite; Information that pertains solely to the fabrication processes or to the means, methods, techniques, sequences and procedures of construction; Coordination of the Work with that of all other trades; Assemblies of which a specific reviewed item is a component; and performance of all work in a safe and satisfactory manner.

Received: 03/27/2023 8:48:58 AM

Returned: 04/06/2023 By: Kevin Pearson

Project 07-1803 Submittal No. 233600-4.2

REVIEWED ONLY

Contractor's review is for general compliance with the information provided in the Contract Documents and for general conformance with the design concept of the project. Any action noted herein is subject to the requirements set forth in the Contract Documents. Subcontractor/Supplier is responsible for all dimensions which shall be confirmed at the jobsite; all fabrication processes and techniques of construction; the coordination of Subcontractor's work with that of all other trades, and the performance of Subcontractor's work in accordance with the Contract Documents

McCownGordon Construction

cgalloway 8:30:46 AM 03/24/2023

McCownGordon

See SB comments.
PQ, HW 4-7-23

Page 1 of 1



- | | |
|---|---|
| <input type="checkbox"/> Approved | <input type="checkbox"/> Rejected |
| <input checked="" type="checkbox"/> Approved as corrected | <input type="checkbox"/> Revise and resubmit |
| <input type="checkbox"/> Approved as corrected/
Partial resubmittal required
(see attached comment sheet) | <input type="checkbox"/> Not reviewed/not a required
submittal |
| | <input type="checkbox"/> No action taken |

This review is only for general conformance with the design concept of the project and general compliance with the information provided in the Contract Documents. Corrections or comments made on the shop drawings during this review do not relieve the contractor from compliance with the requirements of the plans, specifications, and other contract documents. Approval of a specific item shall not include approval of an assembly of which the items is a component. Contractor is responsible for the following: dimensions to be confirmed and correlated at the job site; information that pertains solely to the fabrication process or to the means, methods, techniques, sequences, and procedures of construction; coordination for the work with that of all other trades; and performing all work in a safe and satisfactory manner.

Submittal No: 233600-04B
Date: 04/07/2023
By: PQ

SUBMITTAL

Re-Submittal 2

Grain Valley Police

JRA Job #: KJ - 33145

Temp Con

Engineer: Smith & Boucher, Inc

Architect:

Specification Section: 233600-2.2
Manufacturer: Price Industries
Equipment: Fan Powered Boxes

Comments:

To achieve the desired 11kw electric coil,
the fan flow CFM needed to be bumped up 600 CFM.

Is that acceptable?

Presented per our interpretation of the specified section by:

Matt Warren

JRA Project Manager

Office Phone: (913) 428-2729

Mobile Phone: (913) 609-4127

Email Address: mattwarren@jorban-riscoe.com

Approval

Please return one (1) set of submittals stamped or signed "Approved as Submitted",
or "Approved as Noted" to Jorban-Riscoe.

All equipment submitted herein will be the basis for ordering and shipping of equipment to the customer's designated location. It is the CUSTOMER's responsibility to advise Jorban-Riscoe of any changes in quantities, sizes, performance requirements, etc. ALL CHANGES to these submittals will need to be communicated in writing to Jorban-Riscoe when returning these submittals.



All-In-One Terminals

Entered By Matt Warren
Rep Job No KJ-33145
Location Grain Valley, MO
Customer ALL BIDDERS

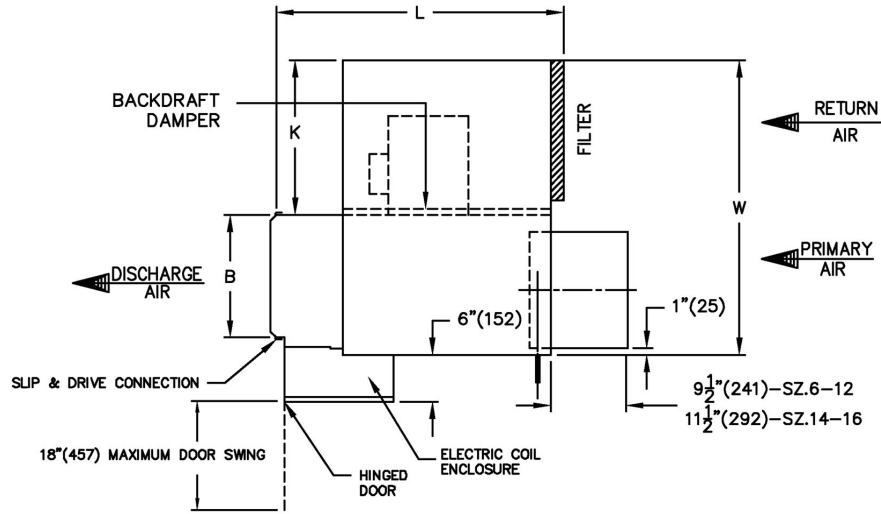
Contractor Temp-Con
Engineer Smith & Boucher
Sales Person Matt Warren

Tag	FPVAV1-1
Qty	1
Size 1	3012
Max Primary (CFM)	1000
Min Primary (CFM)	810
Fan Flow (CFM)	600
Terminal Liner	FG75
Inlet SP (in. w.g.)	1.00
** Min Discharge Sound Power Levels 2008	58, 49, 44, 40, 37, 32
** Max Discharge Sound Power Levels 2008	61, 52, 47, 43, 39, 34
** Max Radiated Sound Power Levels 2008	59, 51, 46, 40, 33, 30
EC Capacity (kW)	11.00
EAT (°F)	63.50
LAT (°F)	88.50
Volts	480-3
Steps	SCRV
Coil	Electric
Aux/Fan/Mix (CFM)	FG75
Motor Volts	277-ECM
Accessories 1	BASV
Accessories 2	FTRM31
Accessories 3	PS

revise to 400
 with increase in
 fan flow.

STILL MISSING RESUBMITTAL FOR SINGLE DUCT VAV BOXES.

FDV5 Fan Powered Variable Volume, Digital Controls by Others



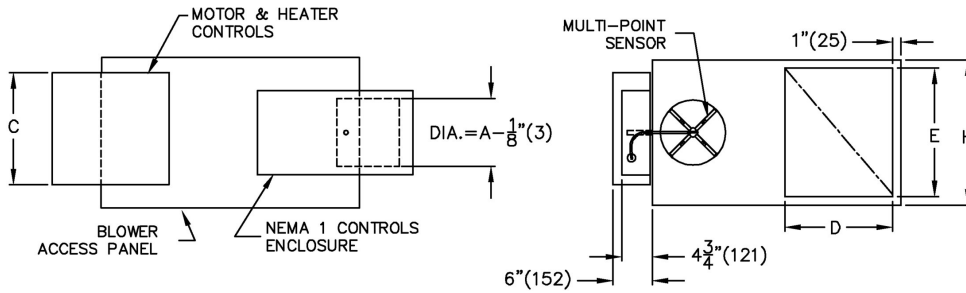
Dimensions - IMPERIAL UNITS (inches)

Unit Size	Maximum Fan CFM	Primary Air Inlet	Return Air Inlet		Outlet Duct		W	H	L	K	Gauge
			D	E	B	C					
3012	1350	12	12	15 1/2	14	12 1/2	31	17 1/2	36 5/8	16 1/4	22

ECM Motor

Unit Size	Motor H.P.	Full Load Amps		
		115V	240V	277V
3012	1/2	7.4	4.3	4.0

Controls



- Pressure independent
- Controls are factory mounted, supplied by controls contractor
- Controls mounted on left hand side of unit
- PS - Controls enclosure included
- 277-24V Control Transformer supplied, factory mounted
- Multi-point primary airflow sensor supplied by Price

Notes

- 22 Ga. zinc coated steel casing. Mechanically sealed and gasketed, leak resistant construction
- Primary damper blade constructed of two layers of heavy gauge galvanized steel with a sandwiched peripheral gasket
- 1/2" (13) dia. plated solid steel shaft with end indicator mark showing damper position
- Damper leakage rated below 2% of nominal flow at 3" w.g. (747Pa). Damper closing direction - CCW
- Units not to be used for temporary heat or ventilation during construction
- Minimum 0.2" w.g. (50 Pa) external static pressure to operate
- Refer to submitted box schedule for air volumes and inlet sizes



Intertek



Assembly UL1995 & CSA236 listed

Motor

- ECM electric motor 1 phase, 60 cycle. Speed controller included
- BASV - BAS Input signal 0-10VDC

PROJECT: Grain Valley PD

ENGINEER:

DESCRIPTION: Fan Powered, VAV - DDC By Others

FDV5//I/8003/3012/FAC/CFM/277-ECM/600/277-24V/EC/11.0/480-3/SCRV/AFS/IDSW/////FG75/BASV/FTRM31/PS//////////SCR-108

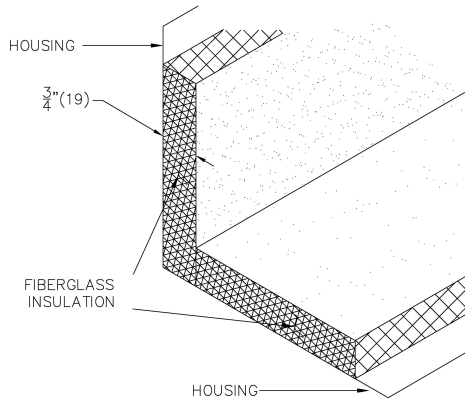
SUBMITTAL NO: 258514-A

CUSTOMER: ALL BIDDERS

SUBMITTAL DATE: 3/23/2023

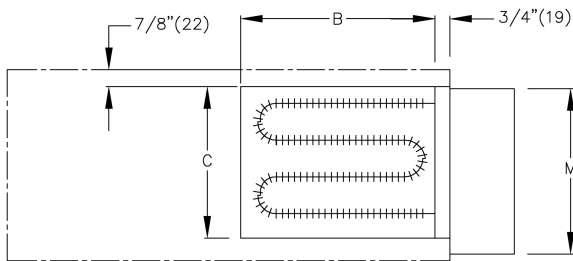
**Liner
FG75**

3/4" Thick Fiberglass Liner (Standard)



Internal Insulation - Fiberglass 3/4" (19mm) thick, min. 1.5 lb/cu.ft density, which meets the requirements of NFPA 90A and UL181.
R-value = 3.2

Electric Coil



Standard Coil Notes

- Automatic reset thermal cutout
- Manual reset thermal cutout
- Refer to submitted control diagrams for standard control components to be supplied
- Hinged access door
- Minimum 0.2" w.g. (50 Pa) external static pressure to operate
- Slip and drive discharge connection
- Heater section not insulated
- 20 Ga. galvanized steel construction
- Fan interlocked with heating elements
- Low watt density elements, high grade nickel-chrome alloy
- 70 CFM per kW minimum air flow across heater coils
- Assembly ETL certified to UL1995 & CSA236
- Single point electrical connection
- Magnetic contactors where required

Unit Size	IMPERIAL UNITS (inches)	
	Outlet Duct B x C	M
3012	14 x 12 1/2	15

Electrical Configuration

- Supply Voltage:
- 480/3Ø (4 Wire)
- Stages/Control: SCR/V
- SCR voltage control with 0-10 VDC control signal
 - SCR-108 (3 Phase SCR, 25 Amps Max / 480 Volts Max)

Selected Coil Features

- AFS - Air flow switch
- IDSW - Door Interlock Disconnect Switch

PROJECT: Grain Valley PD

ENGINEER:

DESCRIPTION: Fan Powered, VAV - DDC By Others

FDV5//I/8003/3012/FAC/CFM/277-ECM/600/277-24V/EC/11.0/480-3/SCRV/AFS/IDSW/////FG75/BASV/FTRM31/PS//////////SCR-108

SUBMITTAL NO: 258514-A

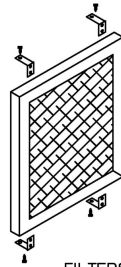
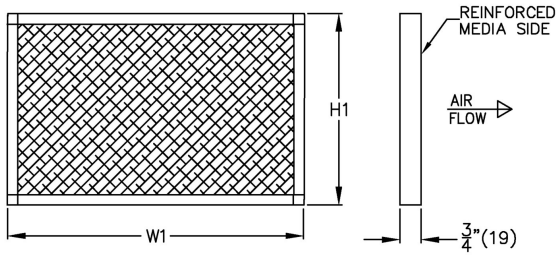
CUSTOMER: ALL BIDDERS

SUBMITTAL DATE: 3/23/2023

Filter

FTRM31

1" MERV 3 Return Air Filter (Disposable)



FILTERS ARE CLIPPED TO TERMINAL CASING

Unit Size	IMPERIAL UNITS (inches)	
	W1	H1
3012	14 $\frac{7}{8}$	17 $\frac{3}{8}$

- Cardboard Frame
- 1" (25) Nominal Filter Media
- MERV 3 Rating
- Filter clipped to terminal

PROJECT: Grain Valley PD

ENGINEER:

DESCRIPTION: Fan Powered, VAV - DDC By Others

FDV5//I/8003/3012/FAC/CFM/277-ECM/600/277-24V/EC/11.0/480-3/SCRV/AFS/IDSW/////FG75/BASV/FTRM31/PS/////SCR-108

SUBMITTAL NO: 258514-A

CUSTOMER: ALL BIDDERS

SUBMITTAL DATE: 3/23/2023