

| PLAN MARK | MANUFACTURER | MODEL NUMBER | SERVICE | MOUNT TYPE | OPPOSED BLADE DAMPER | MATERIAL | COLOR | REMARKS |
|-----------|--------------|--------------|---------|----------------|----------------------|----------|--------|---------|
| SD-1 | TITUS | OMNI | SUPPLY | LAY-IN | NO | STEEL | WHITE | 3 |
| SD-2 | TITUS | 300RS | SUPPLY | SURFACE/DUCT | YES | STEEL | NOTE 1 | |
| SD-3 | TITUS | FL-15-1-JT | SUPPLY | SURFACE/DUCT | NO | ALUMINUM | NOTE 4 | 2,3,5 |
| RG-1 | TITUS | 355 RL | RETURN | LAY-IN/SURFACE | NO | STEEL | NOTE 1 | |
| EG-1 | TITUS | 355 FL | EXHAUST | SURFACE | YES | ALUMINUM | NOTE 1 | |

- NOTES:
 1. FURNISH WITH WHITE FINISH FOR CEILING MOUNTED APPLICATIONS AND PAINTABLE FINISH FOR WALL MOUNTED APPLICATIONS.
 2. FURNISH WITH TITUS PLENUM UNLESS NOTED OTHERWISE ON PLAN.
 3. FURNISH WITH REMOTE DAMPER ACTUATOR FOR INACCESSIBLE CEILING APPLICATIONS.
 4. CUSTOM COLOR TO MATCH SW7069. REFER TO ARCHITECTURAL DRAWINGS FOR MORE INFORMATION.
 5. COORDINATE EXACT BORDER TYPE OF LINEAR SLOT DIFFUSER WITH ARCHITECT PRIOR TO INSTALLATION.

| DESIGNATION | UH-1 | UH-2 | UH-3 |
|-----------------------------|----------------------|----------------------|----------------------|
| HEATER TYPE | GAS-FIRED | GAS-FIRED | GAS-FIRED |
| LOCATION | WATER SERVICE | SALLYPORT | SALLYPORT |
| MOUNTING | SUSPENDED | SUSPENDED | SUSPENDED |
| MANUFACTURER | STERLING | STERLING | STERLING |
| MODEL | GG SERIES | GG SERIES | GG SERIES |
| AIRFLOW (CFM) | 370 | 370 | 370 |
| MOTOR HORSEPOWER | 1/20 | 1/20 | 1/20 |
| MOTOR RPM | 1,650 | 1,650 | 1,650 |
| INPUT (MBH) | 30 | 30 | 30 |
| OUTPUT (MBH) | 24 | 24 | 24 |
| LINEAR VENT LENGTH (FT) | 5 | 5 | 5 |
| QUANTITY OF 90° VENT | 3 | 3 | 3 |
| EQUIVALENT VENT LENGTH (FT) | 20 | 20 | 20 |
| GAS SUPPLY - (IN.W.C.) | 7" MAX | 7" MAX | 7" MAX |
| MINIMUM EFFICIENCY | 82% | 82% | 82% |
| VOLTAGE/PHASE | 120/1 | 120/1 | 120/1 |
| PANEL & CIRCUIT | L1-24 | L1-24 | L1-24 |
| WIRE & CONDUIT | (2)#12,#12G, 1/2" C. | (2)#12,#12G, 1/2" C. | (2)#12,#12G, 1/2" C. |
| OVERCURRENT DEVICE | 20A/1P CB | 20A/1P CB | 20A/1P CB |
| DISCONNECT | NOTE 2 | NOTE 2 | NOTE 2 |
| CONTROL | NOTE 1 | NOTE 1 | NOTE 1 |
| REFERENCE DRAWING/DETAIL | | | |
| REMARKS | NOTE 3 | NOTE 3 | NOTE 3 |

- NOTES:
 1. PROVIDE WITH REMOTE THERMOSTAT FOR SINGLE STAGE CONTROL AND SUMMER FAN SWITCH.
 2. FURNISH AND INSTALL A 30A MOTOR RATED SWITCH AT UNIT.
 3. MOUNT AT 11" ABOVE FINISHED FLOOR.

| DESIGNATION | ACC-1 | ACC-2 |
|---------------------------|----------------------|----------------------|
| MANUFACTURER | MITSUBISHI | MITSUBISHI |
| MODEL | PKA-A12H47 | PKA-A12H47 |
| CFM | 425 | 425 |
| MCA | 1 | 1 |
| TOTAL COOLING CAP (BTUH) | 12,000 | 12,000 |
| VOLTAGE/PHASE | 208/1 | 208/1 |
| PANEL AND CIRCUIT | NOTE 1 | NOTE 1 |
| WIRE AND CONDUIT | (2)#12,#12G, 1/2" C. | (2)#12,#12G, 1/2" C. |
| OVERCURRENT DEVICE | NOTE 1 | NOTE 1 |
| DISCONNECT | NOTE 1 | NOTE 1 |
| ROOF MOUNTED OUTDOOR UNIT | | |
| DESIGNATION | ACCU-1 | ACCU-2 |
| MANUFACTURER | MITSUBISHI | MITSUBISHI |
| MODEL NO. | PUY-A12 | PUY-A12 |
| AMBIENT AIR TEMP (DEG F.) | 100 | 100 |
| MCA | 11.0 | 11.0 |
| VOLTAGE/PHASE | 208/1 | 208/1 |
| PANEL AND CIRCUIT | L2-10,12 | L1-18,20 |
| WIRE AND CONDUIT | (2)#12,#12G, 1/2" C. | (2)#12,#12G, 1/2" C. |
| OVERCURRENT DEVICE | 20A-2P CB | 20A-2P CB |
| DISCONNECT | 30A-2P NF | 30A-2P NF |
| REMARKS | NOTE 2,3,4 | NOTE 2,3,4 |

- NOTE 1: INDOOR UNIT CIRCUITED THROUGH OUTDOOR UNIT.
 NOTE 2: PROVIDE UNIT WITH DIGITAL WALL THERMOSTAT
 NOTE 3: PROVIDE WITH LOW AMBIENT WIND BAFFLE KIT.
 NOTE 4: PROVIDE WITH QUICK SLING STAND FASTENED TO ROOF DECK.

| SERVICE | DUCT SHAPE | CLASSIFICATION | SMACNA REQUIREMENTS | SEAL CLASS | LEAKAGE CLASS | OTHER REQUIREMENTS |
|--|---|-----------------------------|---------------------|---------------------------|----------------------------|--|
| SUPPLY AIR DUCTS CONNECTED TO CONSTANT VOLUME AIR HANDLING UNITS | RECTANGULAR | 2" WG POSITIVE | | B | 12 | 1/2", 3LB DENSITY LINER |
| SUPPLY AIR DUCTS CONNECTED TO TERMINAL BOXES OR FAN COIL UNITS | RECTANGULAR | 4" WG POSITIVE | | A | 3 | INSULATED - SEE SCHEDULE |
| SUPPLY AIR FROM VAV RTUS TO TERMINAL UNITS | ROUND | 10" WG POSITIVE SPIRAL SEAM | | A | 3 | INSULATED - SEE SCHEDULE |
| RETURN AIR DUCTWORK, INCLUDING RETURN AIR BOOTS, TRANSFER AIR DUCTWORK | ROUND (CONCEALED) ROUND (EXPOSED) SPIRAL SEAM | 2" WG POSITIVE | | B | 3 | 1/2", 3LB DENSITY LINER |
| EXHAUST DUCTS TO THE INLET OF THE FAN | RECTANGULAR OR ROUND | 2" WG NEGATIVE | | B - RECTANGULAR A - ROUND | 12 - RECTANGULAR 3 - ROUND | 1/2", 3LB DENSITY LINER (FIRST 10' FROM FAN INLET) |

- NOTES:
 1. SEE DUCTWORK INSULATION SCHEDULE FOR REQUIREMENTS ON DUCT INSULATION

| DESIGNATION | RTU-1 | RTU-2 |
|------------------------------------|-----------------------|-----------------------|
| MANUFACTURER | TRANE | TRANE |
| MODEL NUMBER | YCD380C4P | YCD380C4P |
| NOMINAL TONS | 25 | 25 |
| UNIT WEIGHT (LBS.) | 3,000 | 3,000 |
| AREA SERVED | EAST HALF | WEST HALF |
| SUPPLY AIRFLOW (CFM) | 8,175 | 7,250 |
| OUTSIDE AIRFLOW (CFM) | 2,175 | 1,650 |
| EXTERNAL STATIC PRESSURE (IN.W.C.) | 1.5 | 1.5 |
| QUANTITY | 1 | 1 |
| DRIVE | DIRECT | DIRECT |
| MOTOR HORSEPOWER (EACH) | 3.1 | 3.1 |
| VFD | YES | YES |
| POWERED/BAROMETRIC RELIEF | BAROMETRIC | BAROMETRIC |
| AMBIENT AIR (DB) | 105 | 105 |
| ENT. AIR (DBWB) | 81.9 / 66.8 | 81.0 / 66.6 |
| L.V.G. AIR (DBWB) | 57.0 / 56.5 | 55.9 / 55.4 |
| TOTAL COOLING CAPACITY (MBH) | 255 | 251 |
| SENSIBLE COOLING CAPACITY (MBH) | 198 | 196 |
| MINIMUM E.E.R. @ ARI | 9.8 | 9.8 |
| REFRIGERANT | R410-A | R410-A |
| NUMBER OF COMPRESSORS | 3 | 3 |
| STAGES OF COOLING | 4 | 4 |
| MINIMUM HEATING AIRFLOW (CFM) | 4,100 | 3,625 |
| ENT. AIR (DB) | 50 | 50 |
| L.V.G. AIR (DB) | 90 | 90 |
| HEATING INPUT (MBH) | 250 | 250 |
| HEATING OUTPUT (MBH) | 202 | 202 |
| STAGES / MODULATION | MODULATING | MODULATING |
| TYPE | 2" PLEATED | 2" PLEATED |
| MERV RATING | MERV 13 | MERV 13 |
| MAXIMUM FACE VELOCITY | 500 | 500 |
| VOLTAGE/PHASE | 480/3 | 480/3 |
| MCA | 90 | 90 |
| MOCP | MDP | MDP |
| PANEL & CIRCUIT | MDP | MDP |
| WIRE & CONDUIT | (3)#2,#8G, 1-1/4" C. | (3)#2,#8G, 1-1/4" C. |
| OVERCURRENT DEVICE | 90A-3P CB | 90A-3P CB |
| CONTROL | NOTE 1 | NOTE 1 |
| UNIT MOUNTING | SPRING ISOLATION CURB | SPRING ISOLATION CURB |
| REFERENCE DRAWING/DETAIL | N/A | N/A |
| REMARKS | 1,2,3,4,5 | 1,2,3,4,5 |

- NOTES:
 1. PROVIDE WITH SINGLE POINT POWER CONNECTION.
 2. PROVIDE WITH MINIMUM 18" SPRING VIBRATION ISOLATION ROOF CURB.
 3. PROVIDE UNIT WITH BACNET CARD FOR INTEGRATION INTO CONTROL'S SYSTEM.
 4. FIRE ALARM CONTRACTOR TO FINISH AND FIELD INSTALL DUCT SMOKE DETECTOR IN RETURN AIR SECTION OF DUCT. WIRE SO THAT UNIT IS HARDWIRED TO SHUT OFF IN THE EVENT SMOKE IS DETECTED.
 5. TOTAL STATIC REFLECTS MEAN PRESSURE DROP ACROSS FILTERS.

| DESIGNATION | VAV-2-1 | VAV-2-2 | VAV-2-3 | VAV-2-4 | VAV-2-5 | VAV-2-6 | VAV-2-7 | VAV-2-8 | VAV-2-9 | VAV-2-10 | VAV-2-11 |
|----------------------|----------------------|----------------------|----------------------|------------------|----------------------|----------------------|----------------------|----------------------|----------------------|---------------------|----------------------|
| MANUFACTURER | TITUS | TITUS | TITUS | TITUS | TITUS | TITUS | TITUS | TITUS | TITUS | TITUS | TITUS |
| MODEL NO. | DESV | DESV | DESV | DESV | DESV | DESV | DESV | DESV | DESV | DESV | DESV |
| INLET SIZE | 5 | 6 | 7 | 12 | 5 | 8 | 6 | 5 | 8 | 10 | 4 |
| DESIGN CFM | 200 | 300 | 500 | 1400 | 200 | 600 | 300 | 175 | 600 | 1250 | 125 |
| MINIMUM CFM (NOTE 3) | 60 | 90 | 150 | 420 | 60 | 180 | 90 | 55 | 180 | 375 | 40 |
| MIN HEATING CFM | 100 | 150 | 250 | 700 | 100 | 300 | 150 | 87.5 | 300 | 625 | 62.5 |
| HEATING KW | 2.0 | 3.0 | 3.0 | 9.0 | 1.0 | 6.0 | 1.0 | 1.0 | 6.0 | 7.0 | 1.5 |
| VOLTS/PHASE | 277/1 | 277/1 | 277/1 | 277/1 | 277/1 | 277/1 | 277/1 | 277/1 | 277/1 | 277/1 | 277/1 |
| PANEL | H3-19 | H3-21 | H3-23 | H3-25 | H3-27 | H1-1 | H3-29 | H3-31 | H3-33 | H1-3 | H1-5 |
| WIRE AND CONDUIT | (2)#12,#12G, 1/2" C. | (2)#12,#12G, 1/2" C. | (2)#12,#12G, 1/2" C. | (2)#8,#8G, 1" C. | (2)#12,#12G, 1/2" C. | (2)#10,#10G, 1/2" C. | (2)#12,#12G, 1/2" C. | (2)#12,#12G, 1/2" C. | (2)#10,#10G, 1/2" C. | (2)#8,#10G, 3/4" C. | (2)#12,#12G, 1/2" C. |
| BREAKER | 15A-1P | 15A-1P | 45A-1P | 15A-1P | 30A-1P | 15A-1P | 30A-1P | 15A-1P | 30A-1P | 35A-1P | 15A-1P |
| DISCONNECT | NOTE 2 | NOTE 2 | NOTE 2 | NOTE 2 | NOTE 2 | NOTE 2 | NOTE 2 | NOTE 2 | NOTE 2 | NOTE 2 | NOTE 2 |
| REMARKS | NOTE 1 | NOTE 1 | NOTE 1 | NOTE 1 | NOTE 1 | NOTE 1 | NOTE 1 | NOTE 1 | NOTE 1 | NOTE 1 | NOTE 1 |

- NOTES:
 1. VAV BOX MANUFACTURER TO PROVIDE 24 VOLT TRANSFORMER AND FACTORY MOUNTING OF DDC CONTROLLERS BY BAS CONTRACTOR.
 2. CONTRACTOR TO FURNISH AND INSTALL MOTOR RATED TOGGLE SWITCH ADJACENT TO UNIT FOR UNIT DISCONNECTING MEANS.
 3. MINIMUM CFM SETTING CONTROLLED BY ROOM COMBO TEMP/CO2 SENSOR. OUTSIDE AIR MINIMUM REQUIREMENTS PROVIDED THROUGH RTU AND CONTROL SYSTEM WITH DEMAND CONTROL VENTILATION METHOD.

| DESIGNATION | VAV-1-1 | VAV-1-2 | VAV-1-3 | VAV-1-4 | VAV-1-5 | VAV-1-6 | VAV-1-7 | VAV-1-8 | VAV-1-9 |
|----------------------|---------------------|----------------------|----------------------|----------------------|----------------------|----------------------|----------------------|----------------------|----------------------|
| MANUFACTURER | TITUS | TITUS | TITUS | TITUS | TITUS | TITUS | TITUS | TITUS | TITUS |
| MODEL NO. | DESV | DESV | DESV | DESV | DESV | DESV | DESV | DESV | DESV |
| INLET SIZE | 8 | 6 | 7 | 9 | 4 | 8 | 4 | 5 | 6 |
| DESIGN CFM | 650 | 300 | 550 | 900 | 150 | 700 | 100 | 200 | 275 |
| MINIMUM CFM (NOTE 3) | 195 | 90 | 165 | 270 | 45 | 210 | 30 | 60 | 85 |
| MIN HEATING CFM | 325 | 150 | 275 | 450 | 75 | 350 | 50 | 100 | 137.5 |
| HEATING KW | 7.0 | 2.5 | 4.0 | 6.0 | 1.0 | 6.0 | 1.0 | 1.5 | 2.0 |
| VOLTS/PHASE | 277/1 | 277/1 | 277/1 | 277/1 | 277/1 | 277/1 | 277/1 | 277/1 | 277/1 |
| PANEL | H3-1 | H3-3 | H3-5 | H3-7 | H3-9 | H3-11 | H3-13 | H3-15 | H3-17 |
| WIRE AND CONDUIT | (2)#8,#10G, 3/4" C. | (2)#12,#12G, 1/2" C. | (2)#12,#12G, 1/2" C. | (2)#10,#10G, 1/2" C. | (2)#12,#12G, 1/2" C. | (2)#10,#10G, 1/2" C. | (2)#12,#12G, 1/2" C. | (2)#12,#12G, 1/2" C. | (2)#12,#12G, 1/2" C. |
| BREAKER | 35A-1P | 15A-1P | 20A-1P | 30A-1P | 15A-1P | 30A-1P | 15A-1P | 15A-1P | 15A-1P |
| DISCONNECT | NOTE 2 | NOTE 2 | NOTE 2 | NOTE 2 | NOTE 2 | NOTE 2 | NOTE 2 | NOTE 2 | NOTE 2 |
| REMARKS | NOTE 1 | NOTE 1 | NOTE 1 | NOTE 1 | NOTE 1 | NOTE 1 | NOTE 1 | NOTE 1 | NOTE 1 |

- NOTES:
 1. VAV BOX MANUFACTURER TO PROVIDE 24 VOLT TRANSFORMER AND FACTORY MOUNTING OF DDC CONTROLLERS BY BAS CONTRACTOR.
 2. CONTRACTOR TO FURNISH AND INSTALL MOTOR RATED TOGGLE SWITCH ADJACENT TO UNIT FOR UNIT DISCONNECTING MEANS.
 3. MINIMUM CFM SETTING CONTROLLED BY ROOM COMBO TEMP/CO2 SENSOR. OUTSIDE AIR MINIMUM REQUIREMENTS PROVIDED THROUGH RTU AND CONTROL SYSTEM WITH DEMAND CONTROL VENTILATION METHOD.
 4. CIRCUIT TO PANEL INDICATED. PROVIDE CIRCUIT BREAKER AS REQUIRED WHERE A SPARE BREAKER MEETING INDICATED BREAKER SIZE IS NOT AVAILABLE FOLLOWING DEMOLITION OF EXISTING FAN COIL UNITS OR AIR HANDLING UNITS. FIELD DETERMINE EXISTING PANEL TYPE AND MANUFACTURER FOR PROPER BREAKER ORDERING. FIELD DETERMINE AVAILABLE BREAKERS FOLLOWING DEMOLITION WORK.

| DESIGNATION | EF-1 | EF-2 | EF-3 | EF-4 | EF-5 | EF-6 | EF-7 | EF-8 |
|--------------------------|----------------------|----------------------|----------------------|----------------------|----------------------|----------------------|----------------------|----------------------|
| FAN TYPE | CENTRIFUGAL | CENTRIFUGAL | CENTRIFUGAL | CENTRIFUGAL | CENTRIFUGAL | CENTRIFUGAL | CENTRIFUGAL | CENTRIFUGAL |
| SERVICE | DOG WASH | CELLS | WOMENS LOCKER/RRR | MENS LOCKER/RRR | PUBLIC RRS | JANITOR | PROPERTY STORAGE | SALLY PORT |
| MANUFACTURER | COOK | COOK | COOK | COOK | COOK | COOK | COOK | COOK |
| MODEL | 90C100M | 90C100H | 101C150 | 101C150 | 90C150H | 70C150H | 120C150 | 120C150 |
| CFM | 250 | 300 | 625 | 700 | 450 | 75 | 1175 | 1200 |
| STATIC PRESSURE | 0.20 | 0.20 | 0.50 | 0.50 | 0.20 | 0.20 | 0.50 | 0.50 |
| SOUND DATA | 4.6 SONES | 4.8 SONES | 7.0 SONES | 8.0 SONES | 5.9 SONES | 1.8 SONES | 8.6 SONES | 8.9 SONES |
| FAN RPM | 1100 | 1050 | 1550 | 1550 | 1550 | 1550 | 1550 | 1550 |
| MOTOR HORSEPOWER | 0.04 | 0.04 | 0.061 | 0.125 | 0.125 | 0.05 | 0.25 | 0.25 |
| VOLTS/PHASE | 120/1 | 120/1 | 120/1 | 120/1 | 120/1 | 120/1 | 120/1 | 120/1 |
| DRIVE | DIRECT | DIRECT | DIRECT | DIRECT | DIRECT | DIRECT | DIRECT | DIRECT |
| PANEL & CIRCUIT | L1-10 | L1-12 | L2-14 | L2-16 | L2-18 | L2-20 | L1-14 | L1-16 |
| WIRE & CONDUIT | (2)#12,#12G, 1/2" C. | (2)#12,#12G, 1/2" C. | (2)#12,#12G, 1/2" C. | (2)#12,#12G, 1/2" C. | (2)#12,#12G, 1/2" C. | (2)#12,#12G, 1/2" C. | (2)#12,#12G, 1/2" C. | (2)#12,#12G, 1/2" C. |
| OVERCURRENT DEVICE | 15A-1P CB | 15A-1P CB | 15A-1P CB | 15A-1P CB | 15A-1P CB | 15A-1P CB | 15A-1P CB | 15A-1P CB |
| DISCONNECT | INTEGRAL | INTEGRAL | INTEGRAL | INTEGRAL | INTEGRAL | INTEGRAL | INTEGRAL | INTEGRAL |
| STARTER | - | - | - | - | - | - | - | - |
| COMBINATION STARTER | - | - | - | - | - | - | - | - |
| CONTROL | NOTE 1, 2 | NOTE 1 | NOTE 1 | NOTE 1 | NOTE 1, 2 | NOTE 1, 2 | NOTE 1, 2 | NOTE 1, 2 |
| DAMPER TYPE | BACKDRAFT | BACKDRAFT | BACKDRAFT | BACKDRAFT | BACKDRAFT | BACKDRAFT | BACKDRAFT | BACKDRAFT |
| REFERENCE DRAWING/DETAIL | ME202 | ME202 | ME202 | ME202 | ME202 | ME202 | ME202 | ME202 |
| REMARKS | -- | -- | -- | -- | -- | -- | -- | -- |

- NOTES:
 1. PROVIDE INTERFACE WITH BAS FOR SCHEDULING. PROVIDE WITH VARIABLE FAN SPEED CONTROLLER.
 2. PROVIDE CONTROLS AND SENSORS TO MAINTAIN NEGATIVE SPACE. REFER TO CONTROLS SCHEME.

| DESIGNATION | BH-1 | BH-2 | BH-3 | BH-4 |
|--------------------|----------------------|----------------------|----------------------|----------------------|
| MANUFACTURER | RAYWALL | RAYWALL | RAYWALL | RAYWALL |
| MODEL | J93665002 | J93120F4503 | J93120F4503 | J93120F4503 |
| LENGTH | 10'-0" | 10'-0" | 10'-0" | 10'-0" |
| HEATER WATTS | 4000 | 4500 | 4500 | 4500 |
| VOLTAGE/PHASE | 277/1 | 277/1 | 277/1 | 277/1 |
| PANEL & CIRCUIT | H3-35 | H3-37 | H3-39 | H3-41 |
| WIRE & CONDUIT | (2)#12,#12G, 1/2" C. | (2)#10,#10G, 1/2" C. | (2)#10,#10G, 1/2" C. | (2)#10,#10G, 1/2" C. |
| OVERCURRENT DEVICE | 20A-1P | 25A-1P | 25A-1P | 25A-1P |
| DISCONNECT | INTEGRAL | INTEGRAL | INTEGRAL | INTEGRAL |
| CONTROL | NOTE 1 | NOTE 1 | NOTE 1 | |

| DRAIN SCHEDULE | | |
|----------------|-----------------------|---|
| MARK | MANUFACTURER/ MODEL | DESCRIPTION |
| FD-1 | WADE W-1100-STD-6 | CAST IRON DRAIN WITH ADJUSTABLE TOP AND 6" NICKEL BRASS STRAINER WITH VANDAL RESISTANT SCREWS. PROVIDE WITH PROSET TRAP GUARD BY PROVENT SYSTEMS INC. |
| FS-1 | WADE W-9150-27-15 | 12"X12"X10" FLOOR SINK WITH 1/2 GRATE AND SEDIMENT BUCKET. PROVIDE WITH PROSET TRAP GUARD BY PROVENT SYSTEMS INC. |
| RD-1 | WADE W-3000-42-189-AE | CAST IRON ROOF DRAIN WITH CAST IRON DOME STRAINER, ADJUSTABLE ROOF FLANGE AND VANDAL RESISTANT SCREWS AND ADJUSTABLE DECK RISER. |
| ORD-1 | WADE W-3000-42-189-AE | CAST IRON ROOF DRAIN WITH CAST IRON DOME STRAINER, ADJUSTABLE ROOF FLANGE AND VANDAL RESISTANT SCREWS AND ADJUSTABLE DECK RISER AND 2" DAM VARIATION. |
| DS-1 | WADE W-3940 | CAST BRONZE DOWNSPOUT NOZZLE WITH NO-HUB OUTLET AND FLANGE TO SECURE NOZZLE TO WALL. PROVIDE WITH INSECT SCREEN. |

- NOTES:
 1. REFER TO PLANS FOR OUTLET SIZES
 2. FURNISH FLOOR DRAINS IN SECURE AREAS WITH SECURITY SCREWS.

| DOMESTIC WATER HEATER - GAS | | |
|-----------------------------|--------------------|---|
| DESIGNATION | WH-1 | WH-2 |
| MANUFACTURER | LOCHINVAR | LOCHINVAR |
| MODEL | SNR201-100 | SNR201-100 |
| SERVICE | DOM. HOT WTR | DOM. HOT WTR |
| CAPACITY (GALLONS) | 90 | 90 |
| RECOVERY @ 90°F RISE (GPH) | 233 | 233 |
| OUTLET TEMP. (°F) | 130 | 130 |
| INPUT (MBH) | 199 | 199 |
| MIN. GAS PRESSURE (IN.W.C.) | 2" | 2" |
| ELEC. CONTROL | VOLTS/PHASE | 120/1 |
| | PANEL & CIRCUIT | L2-103 |
| | WIRE & CONDUIT | (2)#12, #12G, 1/2" (2)#12, #12G, 1/2" C |
| | OVERCURRENT DEVICE | 20A/1P CB |
| DISCONNECT | NOTE 1 | NOTE 1 |
| REFERENCE DRAWING/DETAIL | P1.11 | P1.11 |
| REMARKS | - | - |

- NOTES:
 1. PROVIDE MOTOR RATED TOGGLE SWITCH.

| DOMESTIC WATER PUMP SCHEDULE | | |
|------------------------------|--------------------|----------------------|
| DESIGNATION | HCP-1 | |
| MANUFACTURER | BELL & GOSSETT | |
| LOCATION | JC | |
| MODEL NO. | NBF-36 | |
| SERVICE | DHW/ GWH-1 | |
| PUMP TYPE | INLINE | |
| GPM | 5 | |
| PUMP HEAD (FT.) | 35 | |
| MOTOR HORSEPOWER | 1/6 | |
| MOTOR RPM | 1725 | |
| ELEC. CONTROL DATA | VOLTAGE/PHASE | 120/1 |
| | PANEL & CIRCUIT | L1-22 |
| | WIRE & CONDUIT | (2)#12, #12G, 1/2" C |
| | OVERCURRENT DEVICE | 20A-1P CB |
| DISCONNECT | NOTE 1 | |
| STARTER | NEMA 0 | |
| COMBINATION STARTER | N/A | |
| CONTROL | AQUA-STAT | |
| REFERENCE DRAWING/DETAIL | P101 | |
| REMARKS | 2 | |

- NOTES:
 1. PROVIDE MOTOR RATED TOGGLE SWITCH.
 2. PROVIDE BALANCE VALVE TO BALANCE FLOW.

| THERMOSTATIC MIXING VALVE | | |
|---------------------------|---------------|--|
| DESIGNATION | TMV-1 | |
| MANUFACTURER | LEONARD | |
| MODEL | TM-520B-LF-DT | |
| MIN GPM | 1 GPM | |
| PEAK DEMAND GPM | 12.8 | |
| SYSTEM MAX PRESSURE DROP | 5 | |
| OUTLET TEMP. (°F) | 110 | |
| REFERENCE DRAWING/DETAIL | P1.11 | |
| REMARKS | 1, 2 | |

- NOTES:
 1. FURNISH WITH INLET THERMOMETERS
 2. FURNISH WITH BALL VALVE AND DIAL THERMOMETER.

PLUMBING DRAWDOWN TANK SCHEDULE

| DESIGNATION | | DT-1 |
|--------------------------|---------------------------|------|
| LOCATION | STORAGE | |
| SERVICE | DOMESTIC WATER | |
| MANUFACTURER | WESSELS | |
| MODEL NO. | FXA-130-FF | |
| UNIT DATA | PRECHARGE PRESSURE (PSIG) | 40 |
| | MAX. PRESSURE (PSIG) | 60 |
| | TANK TOTAL VOLUME (GAL) | 35 |
| | HEIGHT (IN.) | 37 |
| | DIAMETER (IN.) | 20 |
| | SHIP WEIGHT (LB) | 125 |
| REFERENCE DRAWING/DETAIL | P1.11 | |
| REMARKS | - | |

DOMESTIC WATER EXPANSION TANK SCHEDULE

| DESIGNATION | | PET-1 |
|--------------------------|----------------------|-------|
| MANUFACTURER | ELBI | |
| MODEL | DXT-18 | |
| SERVICE | HOT WATER | |
| UNIT DATA | MIN. TEMP. (°F) | 40 |
| | MAX. TEMP. (°F) | 140 |
| | LINE PRESSURE (PSIG) | 80 |
| | MAX. PRESSURE (PSIG) | 125 |
| | TANK SIZE (GAL) | 4.5 |
| | ACCEPTANCE (GAL) | 3.2 |
| HEIGHT (IN.) | 15 | |
| DIAMETER (IN.) | 11 | |
| WEIGHT (LBS.) | 10 | |
| REFERENCE DRAWING/DETAIL | P1.11 | |
| REMARKS | - | |

PIPE INSULATION SCHEDULE - PLUMBING

| SERVICE | PIPE SIZE | INSULATION |
|--|-------------------|--|
| DOMESTIC COLD WATER | 1/2" - 2" | 1/2" FIBERGLASS, ASJ (OR 1/2" FLEXIBLE CLOSED CELL ELASTOMERIC) |
| | 2-1/2" AND LARGER | 1" FIBERGLASS, ASJ (OR 1" FLEXIBLE CLOSED CELL ELASTOMERIC) |
| DOMESTIC HOT WATER | | |
| RECIRCULATING HOT WATER | ALL | 1" FIBERGLASS, ASJ, (OR 1" FLEXIBLE CLOSED CELL ELASTOMERIC) |
| TEMPERED WATER | | |
| EXPOSED FIXTURE WASTETRAPS AND DOMESTIC HOT WATER AT HANDICAPPED ACCESSIBLE SINKS AND LAVATORIES | ALL | TRUBRO LAV AGUARD MOLDED PROTECTIVE PIPE COVER OVER 1/2" FIBERGLASS INSULATION |
| ROOF DRAIN BODIES | | |
| HORIZONTAL ROOF DRAIN PIPING | ALL | 1" FIBERGLASS, ASJ, (OR 1" FLEXIBLE CLOSED CELL ELASTOMERIC) |
| VERTICAL ROOF DRAIN PIPING | | |

- NOTES:
 1. FOR ALL PIPING 2-1/2" AND LARGER, PROVIDE RIGID FOAM INSERTS AT ALL HANGERS AND SUPPORT LOCATIONS.

PLUMBING FIXTURE SCHEDULE

| MARK | MANUFACTURER/ MODEL | DESCRIPTION | MANUFACTURER/ MODEL | FITTINGS DESCRIPTION | PIPING CONNECTIONS | | | | |
|-------|--|---|---|---|--------------------|--------|------|-----|--------|
| | | | | | NOTES | CW | HW | SAN | VENT |
| WC-1 | AMERICAN STANDARD AFWALL MILLENNIUM 3351.101 | ADA COMPLIANT WATER CLOSET. WHITE VITREOUS CHINA, ELONGATED BOWL, WALL MOUNTED FLUSH VALVE BOWL WITH TOP SPUD AND FLAT BOLT COVERS, 1.28 GALLON SIPHON JET FLUSHING ACTION. | SLOAN G2 8111-1.28 | SENSOR ACTIVATED, ADA COMPLIANT EXPOSED WATER CLOSET FLUSH VALVE, BALL BEY UP/ERA TEU, MECHANICAL OVERRIDE BUT I UN, ADJUSTABLE TAILPIECE, 1.28 GPF | 1.2 | 1-1/4" | - | 4" | 2" |
| | WADE | PROVIDE CARRIER AS REQUIRED TO SUIT APPLICATION FOR MOUNTING IN CHASE. | | PROVIDE WALL AND SPUD FLANGES. | | | | | |
| | CHURCH 9500C | SEAT: SOLID PLASTIC, OPEN FRONT, WHITE, ELONGATED BOWL, INTEGRATED BUMPERS, EXTERNAL CHECK HINGES WITH STAINLESS STEEL POSTS. | | | | | | | |
| WC-2 | AMERICAN STANDARD AFWALL MILLENNIUM 3351.101 | ADA COMPLIANT WATER CLOSET. WHITE VITREOUS CHINA, ELONGATED BOWL, WALL MOUNTED FLUSH VALVE BOWL WITH TOP SPUD AND FLAT BOLT COVERS, 1.28 GALLON SIPHON JET FLUSHING ACTION. | SLOAN G2 8111-1.28 | SENSOR ACTIVATED, ADA COMPLIANT EXPOSED WATER CLOSET FLUSH VALVE, BALL BEY UP/ERA TEU, MECHANICAL OVERRIDE BUT I UN, ADJUSTABLE TAILPIECE, 1.28 GPF | 1.2 | 1-1/4" | - | 4" | 2" |
| | WADE | PROVIDE CARRIER AS REQUIRED TO SUIT APPLICATION FOR MOUNTING IN CHASE. | | PROVIDE WALL AND SPUD FLANGES. | | | | | |
| | CHURCH 9500C | SEAT: SOLID PLASTIC, OPEN FRONT, WHITE, ELONGATED BOWL, INTEGRATED BUMPERS, EXTERNAL CHECK HINGES WITH STAINLESS STEEL POSTS. | | | | | | | |
| WC-3 | WILLOUGHBY SECURITY ECF-1546-150-RPF | ADA COMPLIANT, WALL MOUNTED, SECURITY GRADE TOILET/SINK FIXTURE, 14 GAUGE TYPE 304 STAINLESS STEEL. ALL WELDED CONSTRUCTION WITH EXPOSED STAINLESS STEEL SURFACE. SATIN FINISH. BACK OUTLET. | SLOAN ROYAL 9603-1.6 | CONCEALED, LOW CONSUMPTION FLUSH VALVE ASSEMBLY MANUAL PUSH BUTTON OPERATION | 4.5,6,9 | 1-1/4" | 1/2" | 4" | 2" |
| WC-4 | WILLOUGHBY SECURITY 3696 GB4296 | ADA COMPLIANT SECURITY GRADE COMBINATION LAVATORY/TOILET FIXTURE, 14 GAUGE TYPE 304 STAINLESS STEEL. ALL WELDED CONSTRUCTION WITH EXPOSED STAINLESS STEEL SURFACE. SATIN FINISH. BACK OUTLET. OVERFLOW VENT. HOT AND COLD AIR-CONTROL VALVE. ANTI-FLOOD FEATURE. OVAL-SHAPED LAVATORY BOWL, 13"x9-1/2"x6" DEEP. STAINLESS STEEL BUBBLER/FILLER. FAST DRAIN WITH AIR VENT. COORDINATE CONFIGURATION WITH FLOOR PLANS. PROVIDE WITH ANTI-CALCARE GRAB BAR | SLOAN ROYAL 9603-1.6 | CONCEALED, LOW CONSUMPTION FLUSH VALVE ASSEMBLY MANUAL PUSH BUTTON OPERATION | 4.5,6,9 | 1-1/4" | 1/2" | 4" | 2" |
| WC-5 | AMERICAN STANDARD CADET 3 3378.128 | ADA COMPLIANT WATER CLOSET. WHITE VITREOUS CHINA, RIGHT HEIGHT, ELONGATED BOWL, FLOOR MOUNT, TANK TYPE, 1.28 GPF. | - | - | - | 1/2" | - | 4" | 2" |
| UT | KOHLER BARDON K-4991 | URINAL. WHITE VITREOUS CHINA, WALL HUNG, 3/4" TOP SPUD, 0.125 GALLON WASHDOWN. FLUSHING ACTION. | TOTO ECOPOWER TEU1UA | SENSOR ACTIVATED, ADA COMPLIANT EXPOSED URINAL FLUSH VALVE, HARDWIRED, MECHANICAL OVERRIDE BUTTON, ADJUSTABLE TAILPIECE, 0.125 GPF. PROVIDE WITH TRANSFORMER AS REQUIRED. | 1.2 | 3/4" | - | 2" | 2" |
| | WADE | PROVIDE CARRIER AS REQUIRED TO SUIT APPLICATION FOR MOUNTING IN CHASE. | | PROVIDE WALL AND SPUD FLANGES. | | | | | |
| L-1 | KOHLER BACHATA K-2609-SU | ADA COMPLIANT UNDERMOUNT WASH BASIN. STAINLESS STEEL OVAL BASIN. NO FAUCET HOLES. COUNTER MOUNTED FAUCET. | SLOAN OPTIMA ETF-600-4 | ADA COMPLIANT FAUCET. SENSOR OPERATED, ENERGY CELL POWERED, SINGLE HOLE 0.5 GPM. FURNISH WITH ASSE 1070 COMPLIANT THERMOSTATIC MIXING VALVE. OPEN STRAINER DRAIN ASSEMBLY. FINISH PER ARCHITECT | 1,2,3,4 | 1/2" | 1/2" | 2" | 1-1/2" |
| S-1 | ELKAY ELUHAD161655PD | ADA COMPLIANT SINGLE BOWL, UNDERMOUNT, 18 GAUGE, TYPE 304 STAINLESS STEEL. PROVIDE WITH STRAINER AND CHROME PLATED TAILPIECE. | AMERICAN STANDARD MONTERREY 6409.171 | 8" GOOSENECK FAUCET WITH SWING SPOUT AND WRIST BLADE HANDLES. SIDE SPRAY. ADA COMPLIANT. 1.5 GPM | 1,2,3,6,9 | 1/2" | 1/2" | 2" | 1-1/2" |
| | INSINKERATOR BADGER | 1/2 HP GARBAGE DISPOSAL | | | | | | | |
| S-2 | ELKAY EFRU321910T | UNDERMOUNT, DUAL BOWL, 18 GAUGE, TYPE 304 STAINLESS STEEL. BOWL 1 DIMENSIONS: 7-1/2"x14"x6"x6" BOWL 2 DIMENSIONS: 21"x15-3/4"x10". BOWL 1 ADA COMPLIANT DEPTH. | ELKAY LKAV4032 | 9" GOOSENECK FAUCET WITH RETRACTABLE PULL-DOWN SPRAY AND SINGLE HANDLE. CHROME FINISH. ADA COMPLIANT. 1.5 GPM | 1,2,3,6,9 | 1/2" | 1/2" | 2" | 1-1/2" |
| | INSINKERATOR BADGER | 1/2 HP GARBAGE DISPOSAL | | | | | | | |
| S-3 | ELKAY ELUHAD321655 | UNDERMOUNT, DUAL BOWL, 18 GAUGE, TYPE 304 STAINLESS STEEL. BOWL 1 DIMENSIONS: 14"x14"x5-3/8" BOWL 2 DIMENSIONS: 14"x14"x5-3/8" | ELKAY LKAV4032 | 9" GOOSENECK FAUCET WITH RETRACTABLE PULL-DOWN SPRAY AND SINGLE HANDLE. CHROME FINISH. ADA COMPLIANT. 1.5 GPM | 1,2,3,6,9 | 1/2" | 1/2" | 2" | 1-1/2" |
| DWS-1 | PETLIFT PL-BT-AQ48-RH | STAINLESS STEEL WALK-IN PET BATH WITH ROLL-OUT PORTABLE RAMP. 16 GAUGE 304 GRADE STAINLESS STEEL. 48"Wx57"Hx24.5"L OUTSIDE DIMENSIONS. 4" ON CENTER WATER PORT HOLES. | PETLIFT PL-A45-2575-4C | 4" CENTERS FAUCET, HOSE, SPRAYER, DRAIN AND STRAINER | 4,8 | 1/2" | 1/2" | 2" | 1-1/2" |
| LT-1 | FIAT TAT1 | SINGLE BOWL LAUNDRY TUB WITH LEGS. PROVIDE WITH HARDWARE KIT FOR POLISHED CHROME FAUCET WITH SPOUT, P-TRAP, AND SUPPLY LINES. PROVIDE WITH FOUR LEGS. | - | FURNISH WITH ASSE 1070 COMPLIANT THERMOSTATIC MIXING VALVES. | 1,2,3 | 1/2" | 1/2" | 2" | 1-1/2" |
| EEW-1 | BRADLEY S19-280D | DECK MOUNTED EMERGENCY EYE WASH. CHROME-PLATED BRASS. MOUNT OVER SINK. COORDINATE MOUNTING LOCATION WITH SINK AND FAUCET. | BRADLEY NAVIGATOR S19-2100 EFX8 | EMERGENCY THERMOSTATIC MIXING VALVE. | - | 1/2" | 1/2" | - | - |
| SH-1 | - | (TILE WALLS AND FLOORING) MOUNT NON ADA SHOWER HEADS AT 7" MINIMUM ABOVE FINISHED FLOOR. | DELTA T13H332-25 DELTA R10700-UNWS | ADA COMPLIANT SHOWER TRIM. PRESSURE BALANCING CARTRIDGE WITH CHECKS, SHOWERHEAD, HANDSHOWER, DIVERTER VALVE, 92" STAINLESS STEEL HOSE, STAINLESS STEEL SLIDE BAR, POLISHED CHROME FINISH, 1.5 GPM. ROUGH-IN SHOWER VALVE AND DIVERTER VALVE. | 1,7,9 | 1/2" | 1/2" | 2" | 1-1/2" |
| EW-1 | ELKAY LVRCLTBWSK | ADA COMPLIANT, B-LEVEL BARRIER FREE ELECTRIC WATER COOLER, STAINLESS STEEL. FRONT PUSH BUTTONS, LEAD FREE, CAPABLE OF PROVIDING 8.0 GPH OF 50 DEG WATER AT 90 DEG AMBIENT. BOTTLE FILLER ON LOW SIDE. | CARRIER | ZURN #Z1225 OR EQ. INSTALL SPOUT TO MEET ADA ELECTRICAL LOAD 115VAC, 60HZ, 370 WATTS 4. FLA | 9 | 1/2" | - | 2" | 1-1/2" |
| JS-1 | STERN-WILLIAMS MTB-2424 | JANITORS SINK: 24"x24"x10" TERRAZZO RECEPTOR, STAINLESS STEEL CAP, 3" DRAIN WITH STAINLESS STEEL STRAINER. | DELTA 2879-AC | SINK FAUCET: WALL MOUNT, 10" SPOUT W/ HOSE END, PAIL HOOK, WALL BRACE ADJUSTABLE CENTERS, CROSS HANDLES, CHROME FINISH, 1.5 GPM. | 1 | 3/4" | 3/4" | 3" | 1-1/2" |
| IMB-1 | GUY GRAY MIB | ICE MAKER CONNECTION BOX, WHITE POWDER COATED STEEL BOX AND FRAME. | - | - | 1,9 | 1/2" | - | - | - |
| HB-1 | ZURN Z1330 | HOSE BIB WITH ANTI-SIPHON, BACKFLOW PREVENTER ENCLOSED IN FLUSH MOUNTED WALL BOX. | - | - | 1 | 3/4" | - | - | - |
| HB-2 | REELCRAFT GCD85100 | WALL MOUNTED HOSE REEL WITH 100 FT HEAVY DUTY GARDEN HOSE. | - | - | - | 1/2" | - | - | - |
| WH-1 | ZURN Z1320-C | NON-FREEZE WALL HYDRANT WITH ANTI-SIPHON BACKFLOW PREVENTER ENCLOSED IN FLUSH MOUNTED WALL BOX. | - | - | 1 | 3/4" | - | - | - |
| RH-1 | JAY R SMITH 5905 | NON-FREEZE ROOF HYDRANT WITH GALVANIZED CASING AND ADJUSTABLE FLOW WHEEL LOCK HANDLE WITH DECK FLANGE AND UNDER DECK CLAMP. NO INTERNAL DRAIN REQUIRED. | - | - | - | 3/4" | - | - | - |

- NOTES:
 1. PROVIDE CALK AROUND FIXTURE CONNECTION TO FLOOR/WALL. COLOR BY ARCHITECT.
 2. PROVIDE QUARTER TURN STOPS AND FLEXIBLE STAINLESS STEEL RISERS.
 3. PROVIDE CHROME PLATED BRASS TAILPIECE AND GRID DRAIN. INSULATE EXPOSED TAILPIECE, P-TRAP, AND WATER RISERS.
 4. PROVIDE WITH ALL MOUNTING HARDWARE AS REQUIRED. FIXTURE STUDS AND NUTS SHALL BE STAINLESS STEEL.
 5. PROVIDE PINNED CLEANOUT AT WATER CLOSET OUTLET. TRIM FULL PIN TO THE 3/4 LENGTH. CLEANOUT PLUG MATERIAL TO BE PVC, THREADED INTO CAST IRON.
 6. FURNISH AND INSTALL ASSE 1070 THERMOSTATIC RATED MIXING VALVE TO PROVIDE TEMPERED WATER.
 7. SHOWER IS TO BE PROVIDED WITH ASSE 1018 TYP CERTIFIED PRESSURE AND TEMPERATURE BALANCING MIXING VALVE. SET OUTLET TEMPERATURE TO 110°F.
 8. TRAP AND INSULATION TO BE TRUEBRO #103 E-Z OR EQUAL.
 9. MAXIMUM LENGTH OF ANY 1/2" WATER PIPE IS TO BE 5'-0". UPSIZE WATER SUPPLY BRANCHES TO 3/4" AS REQUIRED TO MEET THIS REQUIREMENT.

PIPE INSULATION SCHEDULE - HVAC

| SERVICE | PIPE SIZE | INSULATION | NOTES |
|---------------------|---------------|---------------------------------------|---------|
| CONDENSATE DRAIN | 1/2" - 1-1/2" | 1/2" FIBERGLASS, ASJ | 1,2,3,4 |
| | 2" AND LARGER | 1" FIBERGLASS, ASJ | |
| REFRIGERANT SUCTION | | | |
| REFRIGERANT HOT GAS | ALL | 3/4" FLEXIBLE CLOSED CELL ELASTOMERIC | |
| REFRIGERANT LIQUID | | | |

- NOTES:
 1. FOR ALL PIPING 2-1/2" AND LARGER, PROVIDE RIGID FOAM INSERTS AT ALL HANGERS AND SUPPORT LOCATIONS.
 2. ELBOW AND FITTING INSULATION SHALL BE OF SAME THICKNESS AS ADJACENT STRAIGHT PIPE INSULATION.
 3. FITTING INSULATION TO HAVE ASJ OR SUPPLEMENTAL VAPOR BARRIER SEALED TO ADJACENT PIPE INSULATION.
 4. PROVIDE PVC JACKET ON ALL FITTINGS AND ELBOWS IN EXPOSED AREAS.

DUCTWORK INSULATION SCHEDULE

| SERVICE | INSULATION |
|--|---|
| EXPOSED DUCTWORK AS FOLLOWS: | |
| OUTSIDE AIR | 1-1/2", 3 LB. RIGID FIBERGLASS BOARD, BAPPOR BARRIER FACED. |
| MIXED AIR | WITH HEAVY DUTY FOIL-SCRM-KRAFT FACING. |
| RELIEF AIR | |
| CONCEALED DUCTWORK AS FOLLOWS: | |
| OUTSIDE AIR | 1-1/2", 1 LB. RIGID FIBERGLASS BLANKET, BAPPOR BARRIER FACED. |
| MIXED AIR | WITH HEAVY DUTY FOIL-SCRM-KRAFT FACING. |
| RELIEF AIR | |
| ALL ROUND SUPPLY AIR AND UNLINED BRANCH TAKE-OFFS FOR ROUND DUCTS AND IN-LINE TRANSITIONS. | |

- NOTES:
 1. SEE DUCTWORK SCHEDULE FOR ITEMS THAT ARE TO BE LINED.

HOEFER WELKER

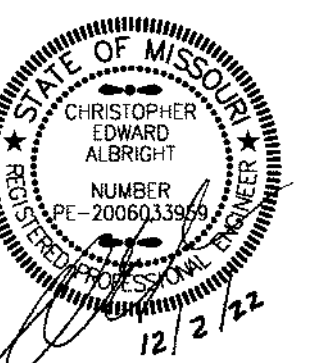
11460 Tomahawk Creek Pkwy
 Suite 400
 Leawood, KS 66211
 P: 913.307.3700
 www.hoefenwelker.com

smith & boucher
 engineers
 25618 west 103rd St. Olathe, KS 66061
 phone 913.345.2127 fax 913.345.0817
 project number 22120000

CONSTRUCTION SET

GRAIN VALLEY POLICE
 719 NW RD MIZE ROAD, GRAIN VALLEY, MO 64029

REVISION DATES:
 3 AS1 3 02.23.23



PROFESSIONAL SEAL

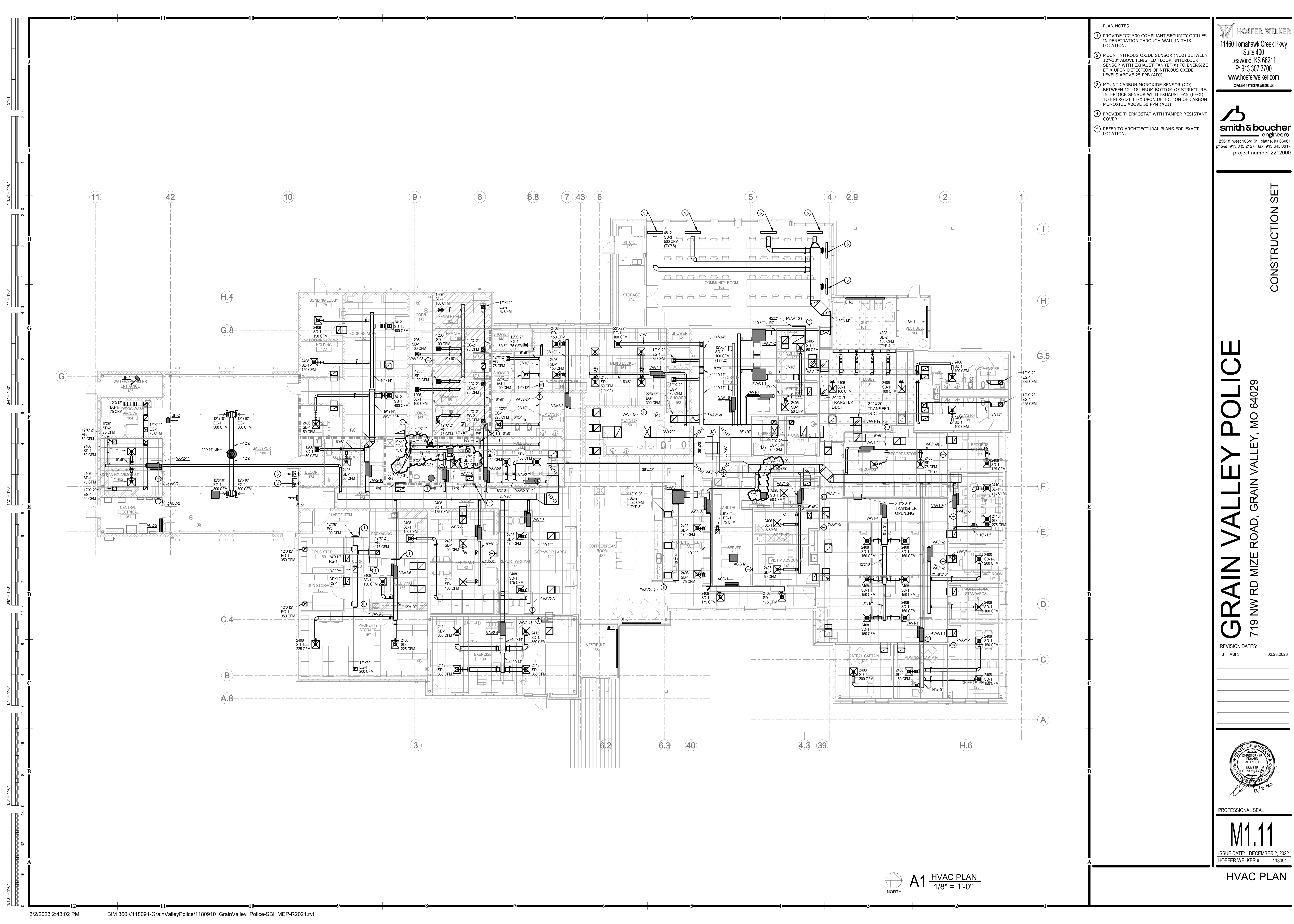
ME3.12

ISSUE DATE: DECEMBER 2, 2022
 HOEFER WELKER #: 118091

MECHANICAL AND ELECTRICAL
 SCHEDULES

PROJECT NAME: LOCATION: \NAME: ME3.12.dwg
 LAST CORRECTION: DATE: TIME: 2023 2:40:21 PM
 PLOTTED BY: DATE: TIME: Thursday, March 2, 2023 2:43:45 PM
 Body: Charles

NOTES:
 1. FOR ALL PIPING 2-1/2" AND LARGER, PROVIDE RIGID FOAM INSERTS AT ALL HANGERS AND SUPPORT LOCATIONS.



- PLAN NOTES:
- PROVIDE ICC 500 COMPLIANT SECURITY GRILLES IN PENETRATION THROUGH WALL IN THIS LOCATION.
 - MOUNT NITROUS OXIDE SENSOR (NO2) BETWEEN 12"-18" ABOVE FINISHED FLOOR. INTERLOCK SENSOR WITH EXHAUST FAN (EF-X) TO ENERGIZE EF-X UPON DETECTION OF NITROUS OXIDE LEVELS ABOVE 25 PPB (ADD).
 - MOUNT CARBON MONOXIDE SENSOR (CO) BETWEEN 12"-18" FROM BOTTOM OF STRUCTURE. INTERLOCK SENSOR WITH EXHAUST FAN (EF-X) TO ENERGIZE EF-X UPON DETECTION OF CARBON MONOXIDE ABOVE 50 PPM (ADD).
 - PROVIDE THERMOSTAT WITH TAMPER RESISTANT COVER.
 - REFER TO ARCHITECTURAL PLANS FOR EXACT LOCATION.

HOEFER WELKER
 11460 Tomahawk Creek Pkwy
 Suite 400
 Leawood, KS 66211
 P: 913.307.3700
 www.hoeferwelker.com
COPYRIGHT © BY HOEFER WELKER, LLC

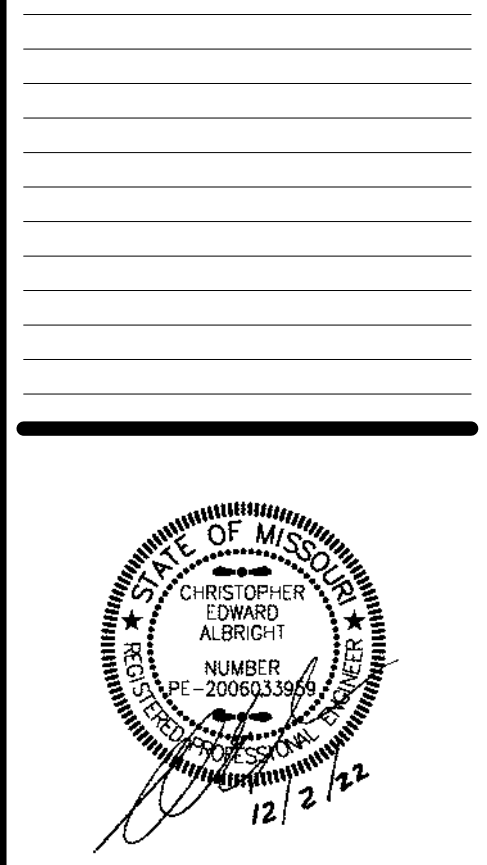
smith & boucher
 engineers
 25618 west 103rd St. olathe, ks 66061
 phone 913.345.2127 fax 913.345.0817
 project number 2212000

CONSTRUCTION SET

GRAIN VALLEY POLICE

719 NW RD MIZE ROAD, GRAIN VALLEY, MO 64029

REVISION DATES:
 3 ASI 3 02.23.2023



PROFESSIONAL SEAL
M1.11
 ISSUE DATE: DECEMBER 2, 2022
 HOEFER WELKER #: 118091

HVAC PLAN

A1 HVAC PLAN
 1/8" = 1'-0"