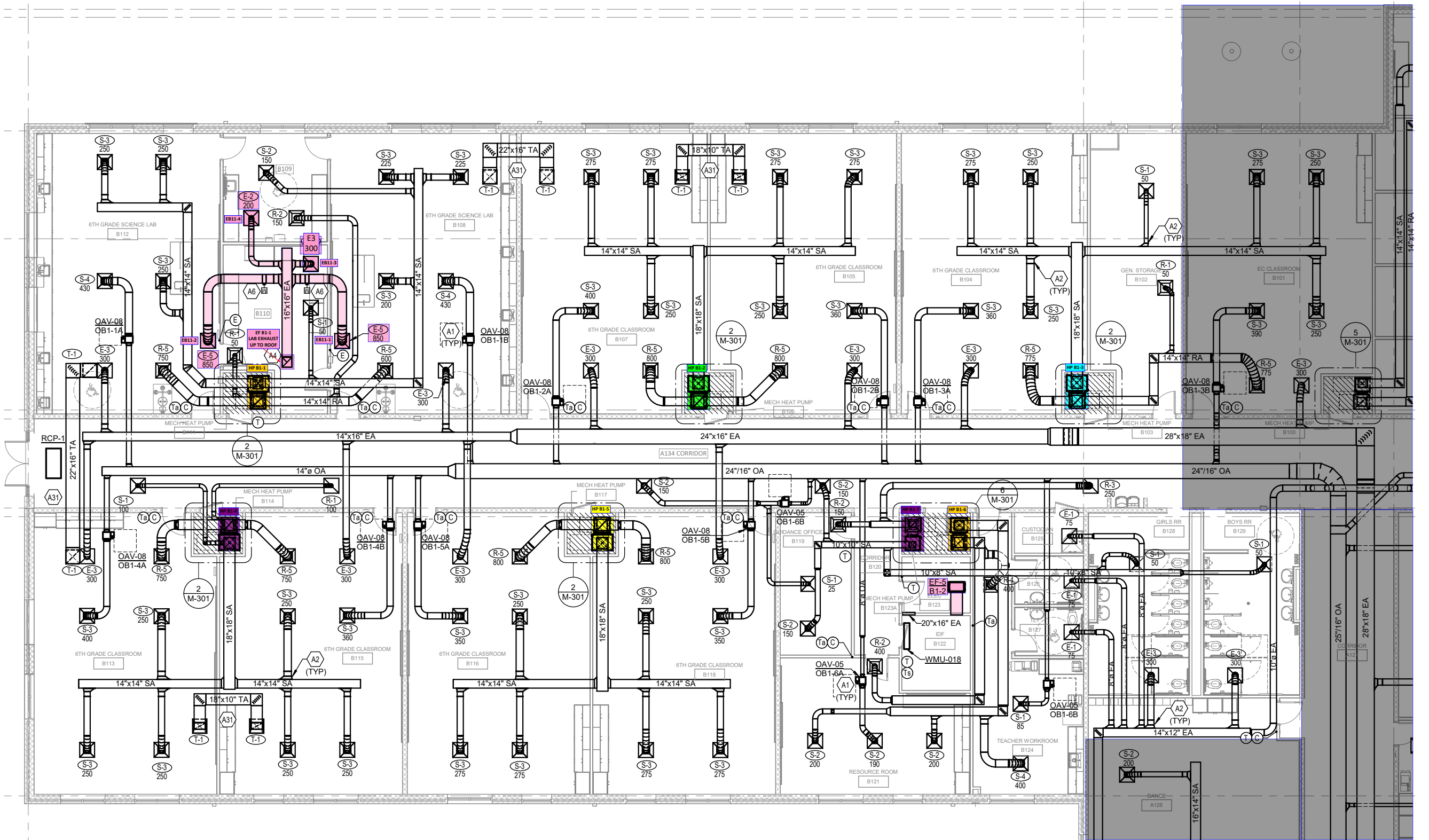
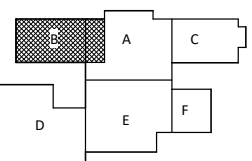
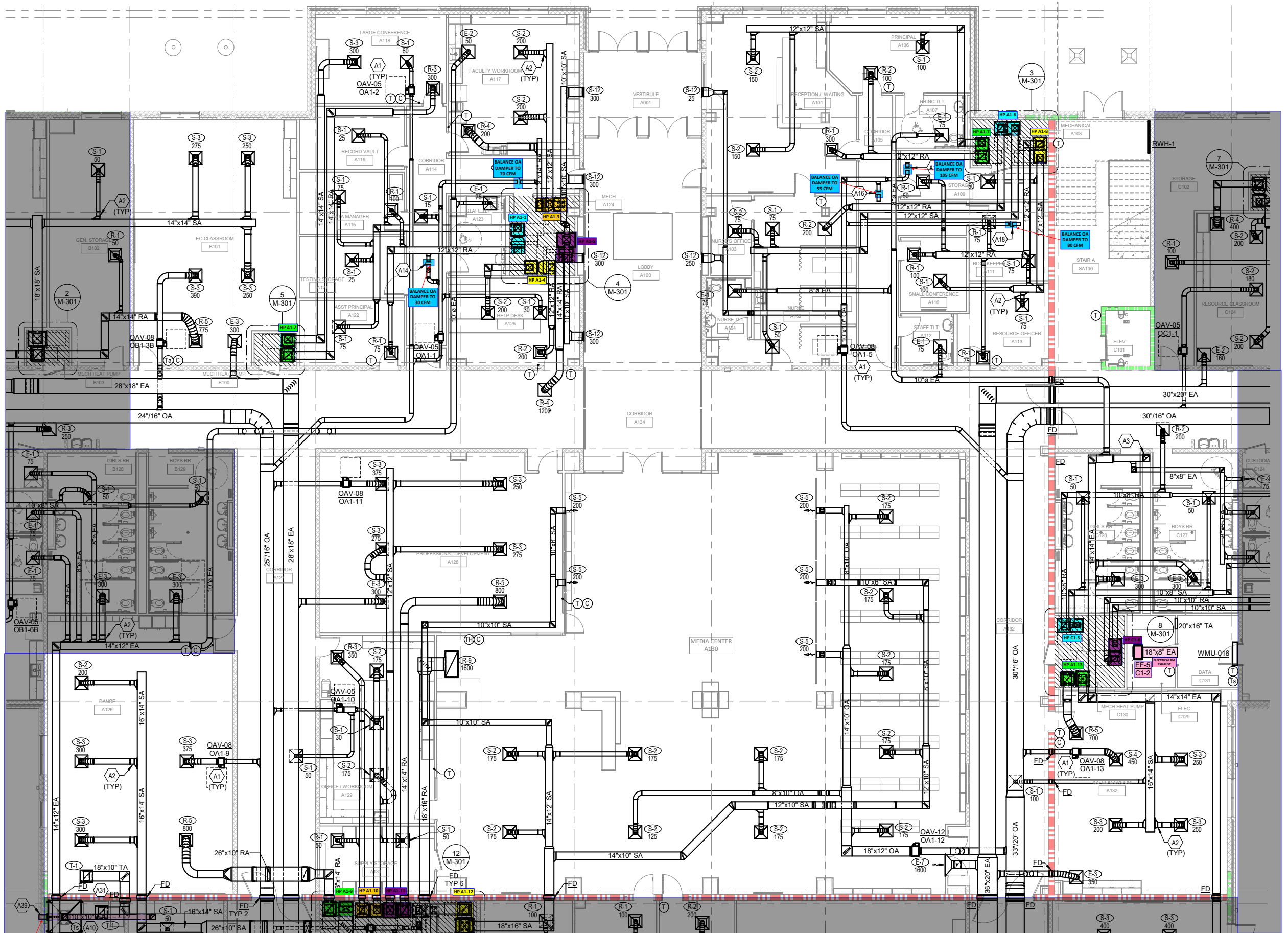


FIRST FLOOR PLAN - AIR DISTRIBUTION - OVERALL



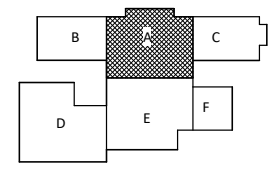
1 PARTIAL FIRST FLOOR PLAN - AIR DISTRIBUTION - AREA B

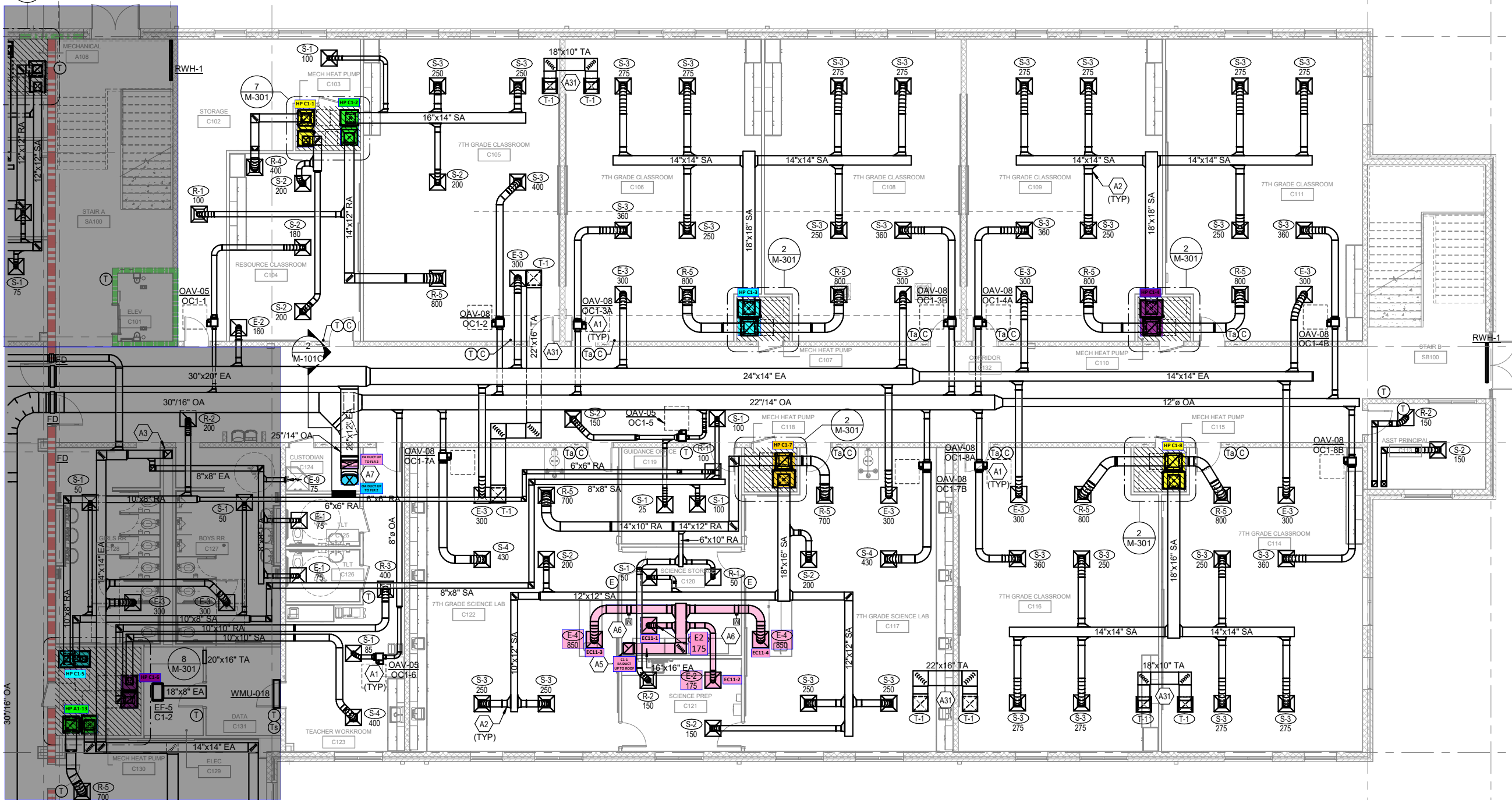




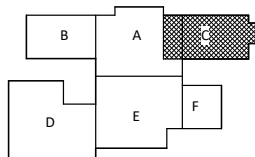
DOWN DRAFT VENT

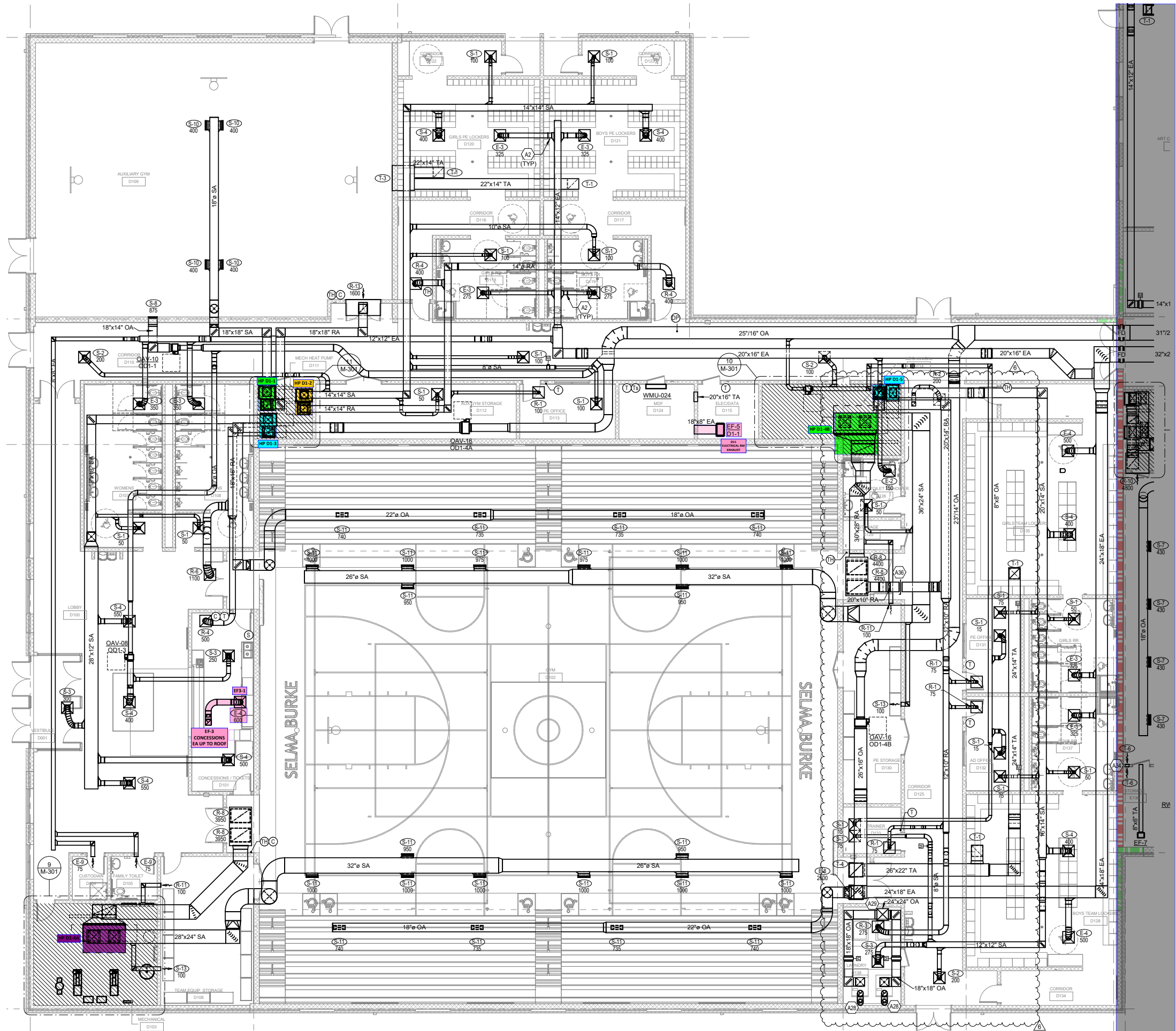
1 PARTIAL FIRST FLOOR PLAN - AIR DISTRIBUTION - AREA A



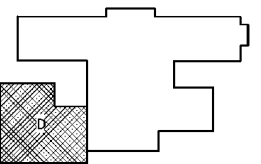


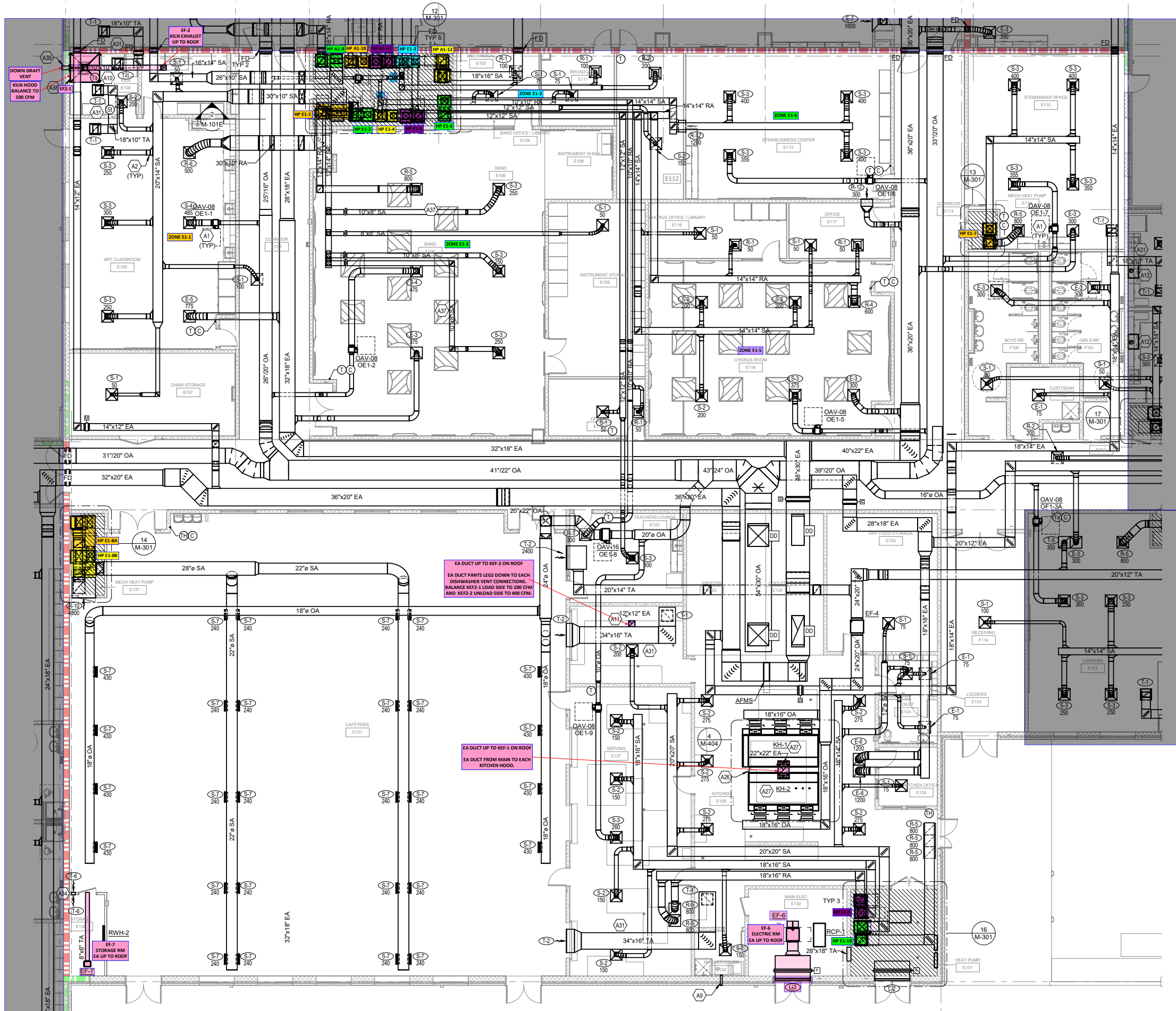
1 PARTIAL FIRST FLOOR PLAN - AIR DISTRIBUTION - AREA C



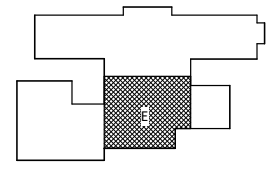


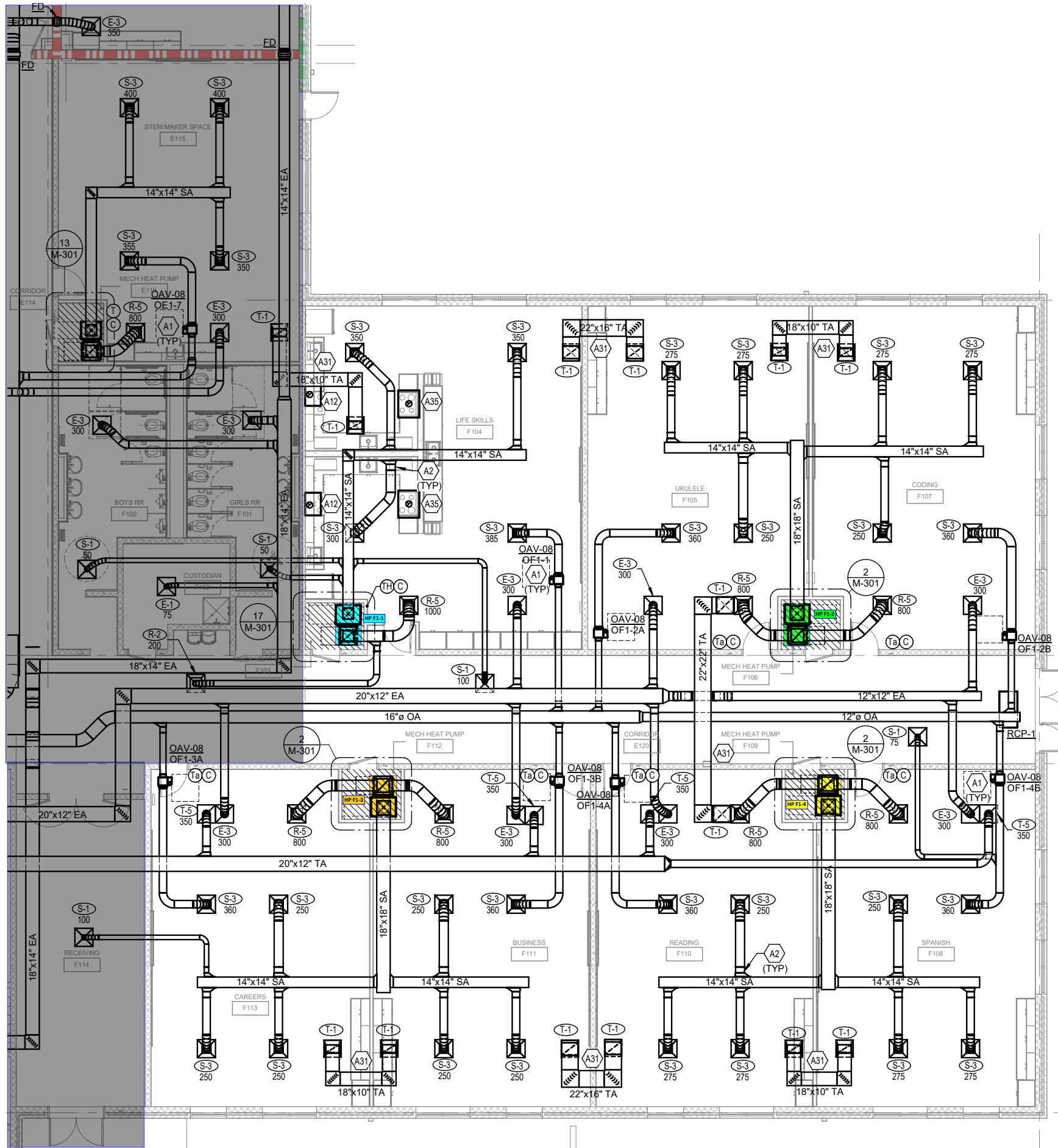
① PARTIAL FIRST FLOOR PLAN - AIR DISTRIBUTION - AREA D



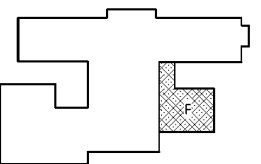


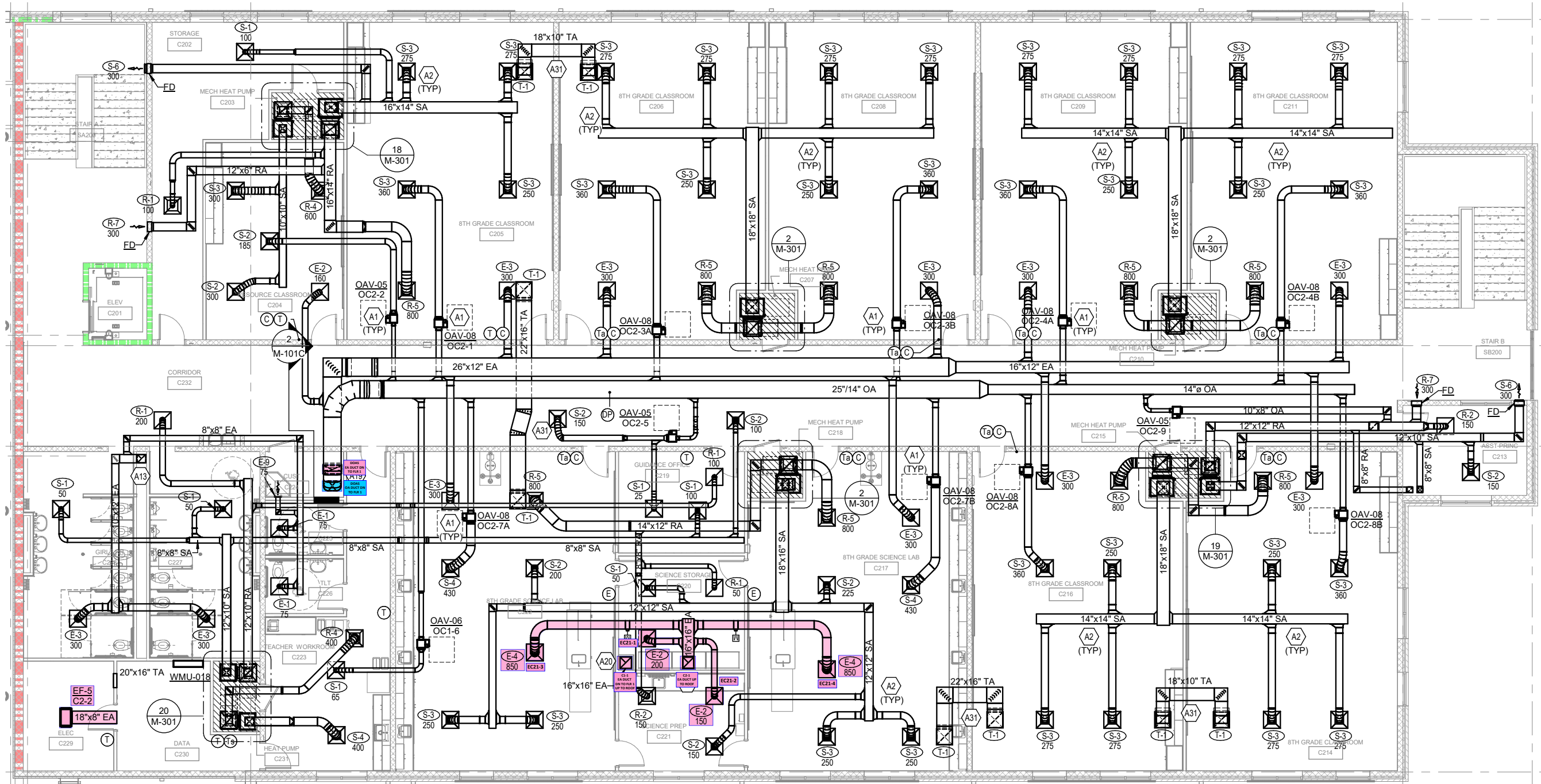
1 PARTIAL FIRST FLOOR PLAN - AIR DISTRIBUTION - AREA E





① PARTIAL FIRST FLOOR PLAN - AIR DISTRIBUTION - AREA F





1 SECOND FLOOR PLAN - AIR DISTRIBUTION - AREA C  
 1/8" = 1'-0"

TAGGED NOTES		M-101A FLOOR 1 AREA A AIR	##
A1	INSTALL OAV BOX TO MAINTAIN SERVICE CLEARANCE AND MINIMUM DISTANCE BETWEEN THE TAKE-OFF AND UNIT. REFER TO DETAIL ON SHEET M-403 FOR ADDITIONAL INFORMATION.		
A2	INSTALL HIGH EFFICIENCY TAKE OFFS FOR ALL RUNOUTS TO GRILLES, REGISTERS, AND DIFFUSERS. REFER TO DETAILS ON SHEET M-402 FOR ADDITIONAL INFORMATION.		
A3	12"X12" EA DUCT UP.		
A10	PROVIDE 60"x60" EXHAUST HOOD FOR EACH KILN. KEES OVERHEAD CANOPY HOOD OR APPROVED EQUAL. INSTALL HOOD PER MANUFACTURER'S RECOMMENDATIONS. FAN SHALL BE CONTROLLED BY TEMPERATURE SENSOR LOCATED IN HOOD WITH OPERATOR OVERRIDE TIMED WALL SWITCH ON WALL.		
A14	BALANCE OA DAMPER TO 30 CFM.		
A15	BALANCE OA DAMPER TO 70 CFM.		
A16	BALANCE OA DAMPER TO 55 CFM.		
A17	BALANCE OA DAMPER TO 105 CFM.		
A18	BALANCE OA DAMPER TO 80 CFM.		
A31	TRANSFER AIR DUCT. DUCT SHALL BE SINGLE WALL LINED WITH 1" THICK SONIC XP FIBERGLASS DUCT LINER OR EQUAL.		
A39	DOWNDRAFT VENT: SKUTT MODEL SE2, ENVIROVENT2. INCLUDE WITH ENVIROLINK FOR AUTOMATIC FAN CONTROL BASED ON KILN OPERATION, COORDINATE WITH MANUFACTURER. INSTALL PER MANUFACTURER'S DIRECTIONS. COORDINATE LOCATION, ELEVATION AND VENT HOOD FOR WALL PENETRATION WITH ARCHITECT.		

TAGGED NOTES		M-101D FLOOR 1 AREA D AIR	##
A1	INSTALL OAV BOX TO MAINTAIN SERVICE CLEARANCE AND MINIMUM DISTANCE BETWEEN THE TAKE-OFF AND UNIT. REFER TO DETAIL ON SHEET M-403 FOR ADDITIONAL INFORMATION.		
A2	INSTALL HIGH EFFICIENCY TAKE OFFS FOR ALL RUNOUTS TO GRILLES, REGISTERS, AND DIFFUSERS. REFER TO DETAILS ON SHEET M-402 FOR ADDITIONAL INFORMATION.		
A28	PROVIDE 12" EA VENT FOR COMMERCIAL DRYER UP THROUGH ROOF. PROVIDE WITH GOOSENECK ON ROOF INSTALL PER MANUFACTURER REQUIREMENTS.		
A29	24"X24" OA DUCT UP TO INTAKE HOOD ON ROOF. ROUTE 18"X18" OA MAKE-UP AIR TO TOP OF EACH COMMERCIAL DRYER. EACH WILL BE PROVIDED WITH MAKE-UP AIR DUCT AND MOTORIZED DAMPER TIED TO THE UNIT OPERATION. INSTALL PER MANUFACTURER RECOMMENDATIONS. ALL OA DUCTWORK SHALL BE INSULATED.		
A34	INSTALL TRANSFER GRILLES AND DUCT AT 12" AFF.		

TAGGED NOTES		M-101B FLOOR 1 AREA B AIR	##
A1	INSTALL OAV BOX TO MAINTAIN SERVICE CLEARANCE AND MINIMUM DISTANCE BETWEEN THE TAKE-OFF AND UNIT. REFER TO DETAIL ON SHEET M-403 FOR ADDITIONAL INFORMATION.		
A2	INSTALL HIGH EFFICIENCY TAKE OFFS FOR ALL RUNOUTS TO GRILLES, REGISTERS, AND DIFFUSERS. REFER TO DETAILS ON SHEET M-402 FOR ADDITIONAL INFORMATION.		
A4	16"X16" EA DUCT UP TO EF ON ROOF.		
A6	MOTORIZED DAMPERS SHALL BE TIED TO SCIENCE LAB EXHAUST OVERRIDE SWITCH.		
A31	TRANSFER AIR DUCT. DUCT SHALL BE SINGLE WALL LINED WITH 1" THICK SONIC XP FIBERGLASS DUCT LINER OR EQUAL.		

TAGGED NOTES		M-101E FLOOR 1 AREA E AIR	##
A1	INSTALL OAV BOX TO MAINTAIN SERVICE CLEARANCE AND MINIMUM DISTANCE BETWEEN THE TAKE-OFF AND UNIT. REFER TO DETAIL ON SHEET M-403 FOR ADDITIONAL INFORMATION.		
A2	INSTALL HIGH EFFICIENCY TAKE OFFS FOR ALL RUNOUTS TO GRILLES, REGISTERS, AND DIFFUSERS. REFER TO DETAILS ON SHEET M-402 FOR ADDITIONAL INFORMATION.		
A9	PROVIDE 4" DRYER DUCT TO EXTERIOR. PROVIDE DRYER WALL BOX AND WALL CAP WITH BACKDRAFT DAMPER. INSTALL PER MANUFACTURER RECOMMENDATIONS.		
A10	PROVIDE 60"x60" EXHAUST HOOD FOR EACH KILN. KEES OVERHEAD CANOPY HOOD OR APPROVED EQUAL. INSTALL HOOD PER MANUFACTURER'S RECOMMENDATIONS. FAN SHALL BE CONTROLLED BY TEMPERATURE SENSOR LOCATED IN HOOD WITH OPERATOR OVERRIDE TIMED WALL SWITCH ON WALL.		
A11	INSTALL 16"X4" EA DUCT PANTS LEGS DOWN TO EACH DISHWASHER VENT CONNECTIONS. BALANCE LOAD SIDE TO 200 CFM AND UNLOAD SIDE TO 400 CFM. 12"X12" EA DUCT UP TO EF ON ROOF. REFER TO DETAIL ON SHEET M-404 FOR ADDITIONAL INFORMATION.		
A12	PROVIDE 30" BROAN CORTEO CRDE1 SERIES CONVERTIBLE UNDER-CABINET RANGE HOOD OR APPROVED EQUAL. PROVIDE WITH INTEGRAL FAN AND CORD & PLUG CONNECTION. TRANSITION FROM HOOD OUTLET TO 8" EXHAUST AIR DUCT UP TO ROOF. INSTALL ROOF VENT PER RANGE HOOD VENT DETAIL ON SHEET M-403.		
A26	MECHANICAL CONTRACTOR SHALL PROVIDE AND INSTALL UTILITY DISTRIBUTION SYSTEM (UDS) WALL BETWEEN HOODS. UDS SHALL BE FULL HEIGHT BETWEEN TWO WALL TYPE KITCHEN HOODS. UDS SHALL PROVIDE POWER AND WATER FOR ALL KITCHEN EQUIPMENT ON EITHER SIDE OF THE WALL. SEE DETAIL ON SHEET M-404 FOR LAYOUT OF EQUIPMENT AND CONNECTION REQUIREMENTS. PLUMBING CONTRACTOR WILL BE RESPONSIBLE FOR WATER CONNECTIONS MADE TO THE UDS. ELECTRICAL CONTRACTOR WILL BE RESPONSIBLE FOR ALL ELECTRICAL CONNECTIONS MADE TO THE UDS.		
A27	INSTALL KITCHEN HOODS PER DETAIL ON SHEET M-404. 22"X22" EA DUCT UP TO EF ON ROOF. INSTALL 20"X12" EA DUCT FROM MAIN TO EACH KITCHEN HOOD. TRANSITION AT KITCHEN HOOD AS REQUIRED TO MATCH HOOD OUTLET.		
A31	TRANSFER AIR DUCT. DUCT SHALL BE SINGLE WALL LINED WITH 1" THICK SONIC XP FIBERGLASS DUCT LINER OR EQUAL.		
A34	INSTALL TRANSFER GRILLES AND DUCT AT 12" AFF.		
A37	COORDINATE DUCTWORK BETWEEN AND THROUGH JOISTS.		
A38	KILN HOOD BALANCED TO 500 EA CFM.		
A39	DOWNDRAFT VENT: SKUTT MODEL SE2, ENVIROVENT2. INCLUDE WITH ENVIROLINK FOR AUTOMATIC FAN CONTROL BASED ON KILN OPERATION, COORDINATE WITH MANUFACTURER. INSTALL PER MANUFACTURER'S DIRECTIONS. COORDINATE LOCATION, ELEVATION AND VENT HOOD FOR WALL PENETRATION WITH ARCHITECT.		

TAGGED NOTES		M-101C FLOOR 1 AREA C AIR	##
A1	INSTALL OAV BOX TO MAINTAIN SERVICE CLEARANCE AND MINIMUM DISTANCE BETWEEN THE TAKE-OFF AND UNIT. REFER TO DETAIL ON SHEET M-403 FOR ADDITIONAL INFORMATION.		
A2	INSTALL HIGH EFFICIENCY TAKE OFFS FOR ALL RUNOUTS TO GRILLES, REGISTERS, AND DIFFUSERS. REFER TO DETAILS ON SHEET M-402 FOR ADDITIONAL INFORMATION.		
A3	12"X12" EA DUCT UP.		
A5	16"x16" EA DUCT UP.		
A6	MOTORIZED DAMPERS SHALL BE TIED TO SCIENCE LAB EXHAUST OVERRIDE SWITCH.		
A7	26"X12" EA DUCT AND 25"/14" OA DUCT UP.		
A31	TRANSFER AIR DUCT. DUCT SHALL BE SINGLE WALL LINED WITH 1" THICK SONIC XP FIBERGLASS DUCT LINER OR EQUAL.		

TAGGED NOTES		M-101F FLOOR 1 AREA F AIR	##
A1	INSTALL OAV BOX TO MAINTAIN SERVICE CLEARANCE AND MINIMUM DISTANCE BETWEEN THE TAKE-OFF AND UNIT. REFER TO DETAIL ON SHEET M-403 FOR ADDITIONAL INFORMATION.		
A2	INSTALL HIGH EFFICIENCY TAKE OFFS FOR ALL RUNOUTS TO GRILLES, REGISTERS, AND DIFFUSERS. REFER TO DETAILS ON SHEET M-402 FOR ADDITIONAL INFORMATION.		
A12	PROVIDE 30" BROAN CORTEO CRDE1 SERIES CONVERTIBLE UNDER-CABINET RANGE HOOD OR APPROVED EQUAL. PROVIDE WITH INTEGRAL FAN AND CORD & PLUG CONNECTION. TRANSITION FROM HOOD OUTLET TO 8" EXHAUST AIR DUCT UP TO ROOF. INSTALL ROOF VENT PER RANGE HOOD VENT DETAIL ON SHEET M-403.		
A35	PROVIDE 43" ZEPHYR LUX FLUSH ISLAND HOOD OR APPROVED EQUAL. PROVIDE WITH INTEGRAL FAN AND CORD & PLUG CONNECTION. TRANSITION FROM HOOD OUTLET TO 8" EXHAUST AIR DUCT UP TO ROOF. INSTALL ROOF VENT PER RANGE HOOD VENT DETAIL ON SHEET M-403.		

TAGGED NOTES		M-102C FLOOR 2 AREA C AIR	##
A1	INSTALL OAV BOX TO MAINTAIN SERVICE CLEARANCE AND MINIMUM DISTANCE BETWEEN THE TAKE-OFF AND UNIT. REFER TO DETAIL ON SHEET M-403 FOR ADDITIONAL INFORMATION.		
A2	INSTALL HIGH EFFICIENCY TAKE OFFS FOR ALL RUNOUTS TO GRILLES, REGISTERS, AND DIFFUSERS. REFER TO DETAILS ON SHEET M-402 FOR ADDITIONAL INFORMATION.		
A4	16"X16" EA DUCT UP TO EF ON ROOF.		
A13	12"X12" EA DUCT DOWN.		
A19	26"X12" EA DUCT AND 25"/14" OA DUCT DN.		
A20	16"X16" EA DN AND 16"X16" EA DUCT UP TO EF ON ROOF.		
A31	TRANSFER AIR DUCT. DUCT SHALL BE SINGLE WALL LINED WITH 1" THICK SONIC XP FIBERGLASS DUCT LINER OR EQUAL.		

