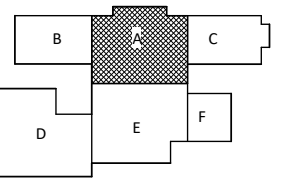
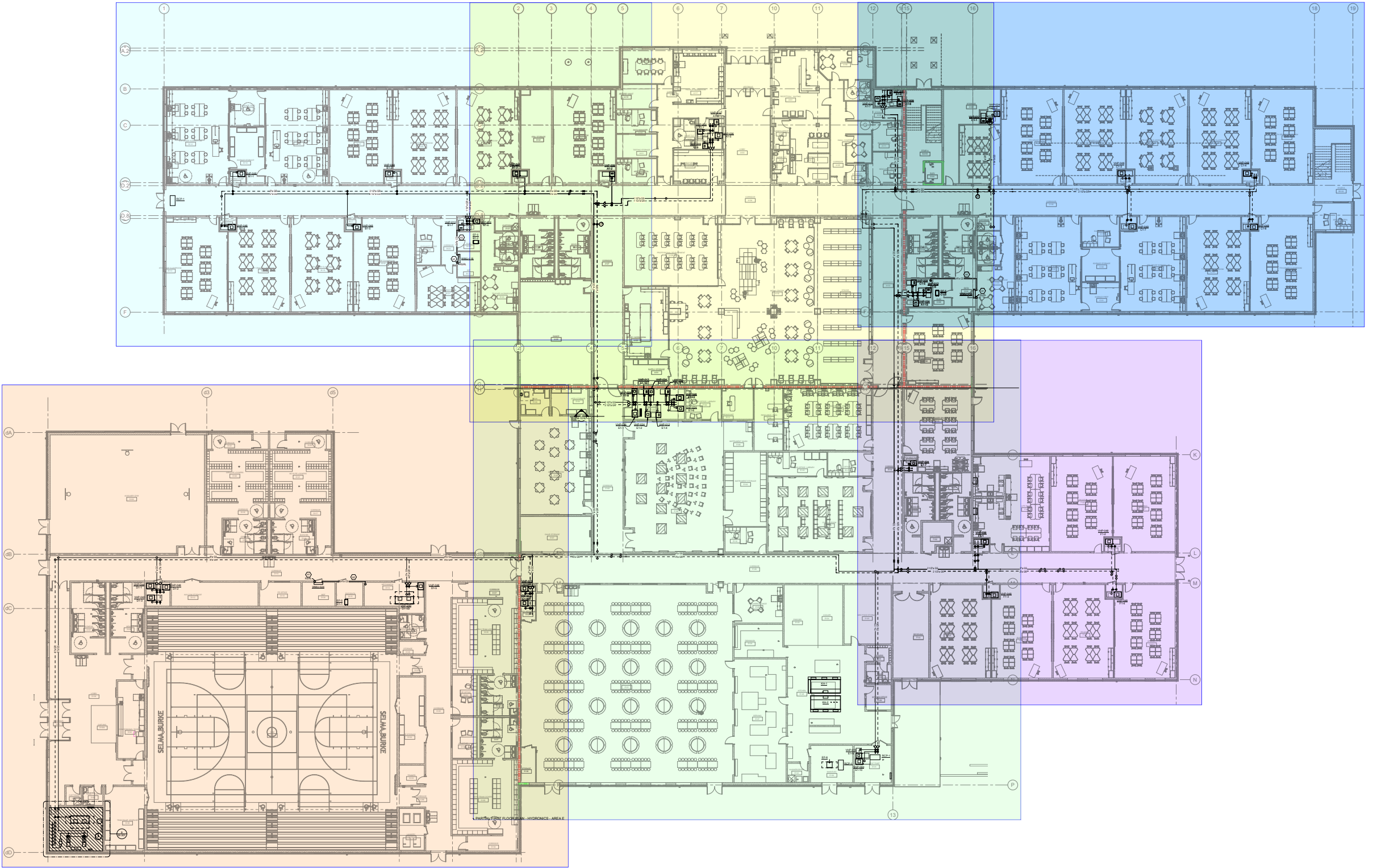
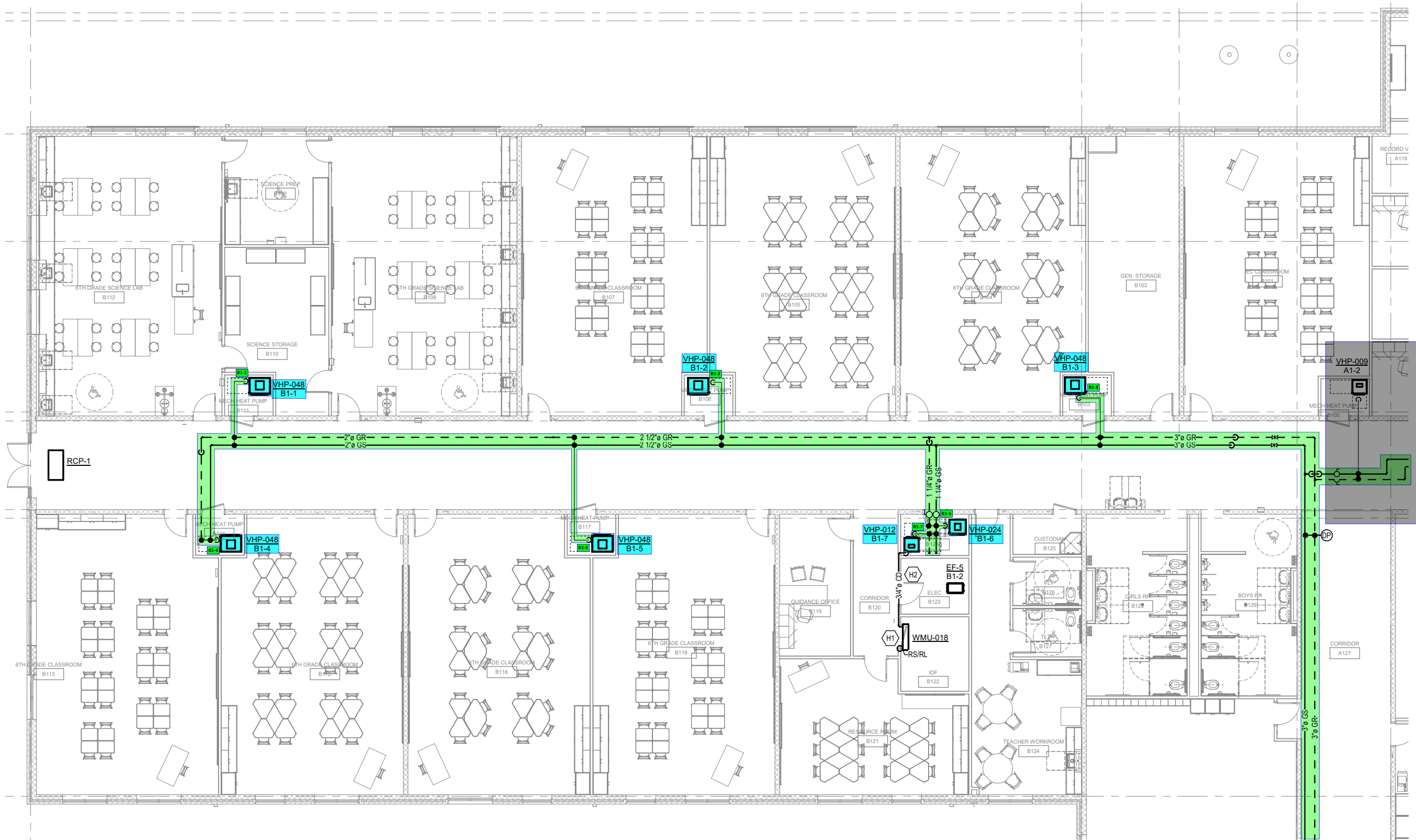
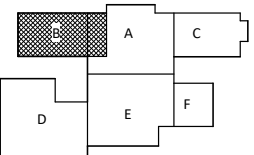


① FIRST FLOOR PLAN - HYDRONICS - OVERALL  
 1/16" = 1'-0"





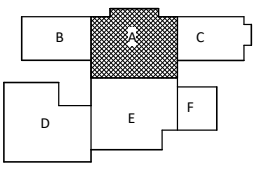
PIPE RUNOUT...		
MARK	CONDENSATE PIPE SIZE	GS/GR PIPE SIZE
VHP-006	3/4"	3/4"
VHP-009	3/4"	3/4"
VHP-012	3/4"	3/4"
VHP-018	3/4"	1"
VHP-024	3/4"	1"
VHP-036	1"	1 1/4"
VHP-048	1"	1 1/4"
VHP-060	1"	1 1/2"
VHP-072	1 1/4"	1 1/2"
VHP-240	1 1/4"	3"



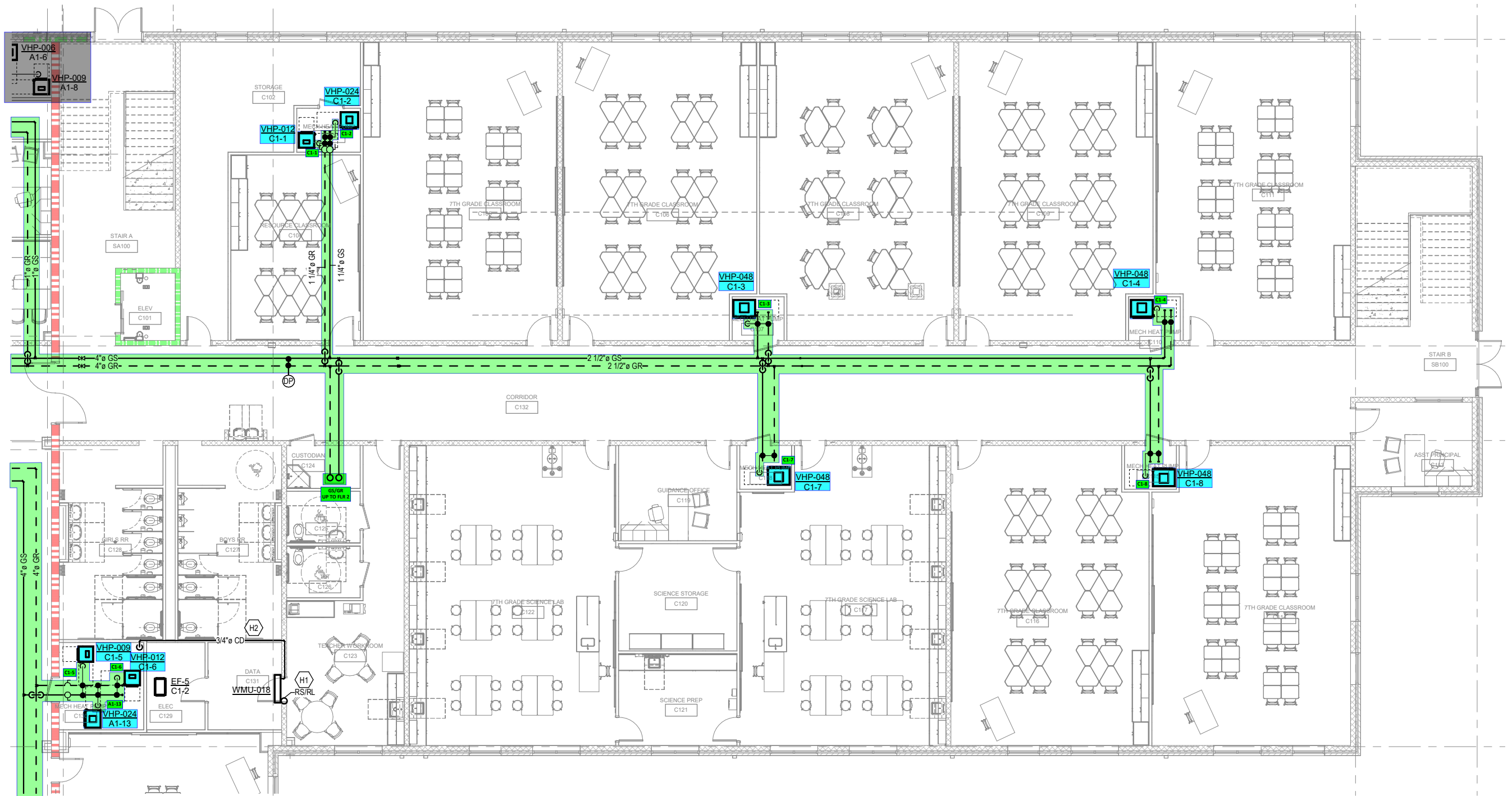
1 PARTIAL FIRST FLOOR PLAN - HYDRONICS - AREA B



PIPE RUNOUT...		
MARK	CONDENSATE PIPE SIZE	GS/GR PIPE SIZE
VHP-006	3/4"	3/4"
VHP-009	3/4"	3/4"
VHP-012	3/4"	3/4"
VHP-018	3/4"	1"
VHP-024	3/4"	1"
VHP-036	1"	1 1/4"
VHP-048	1"	1 1/4"
VHP-060	1"	1 1/2"
VHP-072	1 1/4"	1 1/2"
VHP-240	1 1/4"	3"

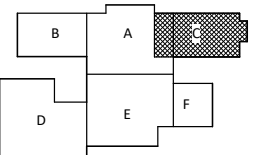


① PARTIAL FIRST FLOOR PLAN - HYDRONICS - AREA A

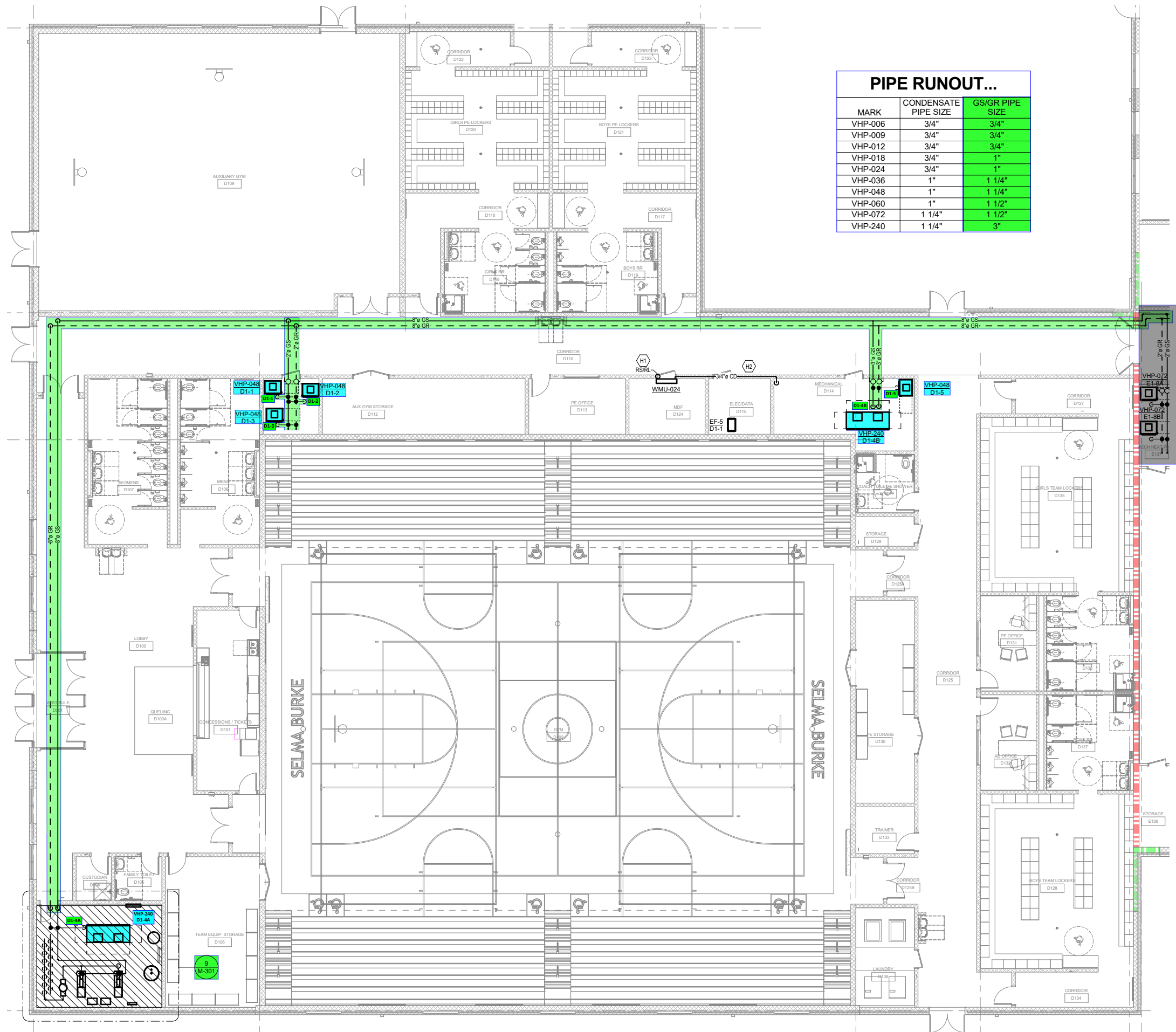


**PIPE RUNOUT...**

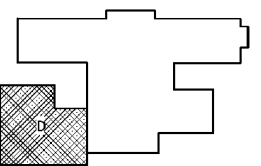
MARK	CONDENSATE PIPE SIZE	GS/GR PIPE SIZE
VHP-006	3/4"	3/4"
VHP-009	3/4"	3/4"
VHP-012	3/4"	3/4"
VHP-018	3/4"	1"
VHP-024	3/4"	1"
VHP-036	1"	1 1/4"
VHP-048	1"	1 1/4"
VHP-060	1"	1 1/2"
VHP-072	1 1/4"	1 1/2"
VHP-240	1 1/4"	3"

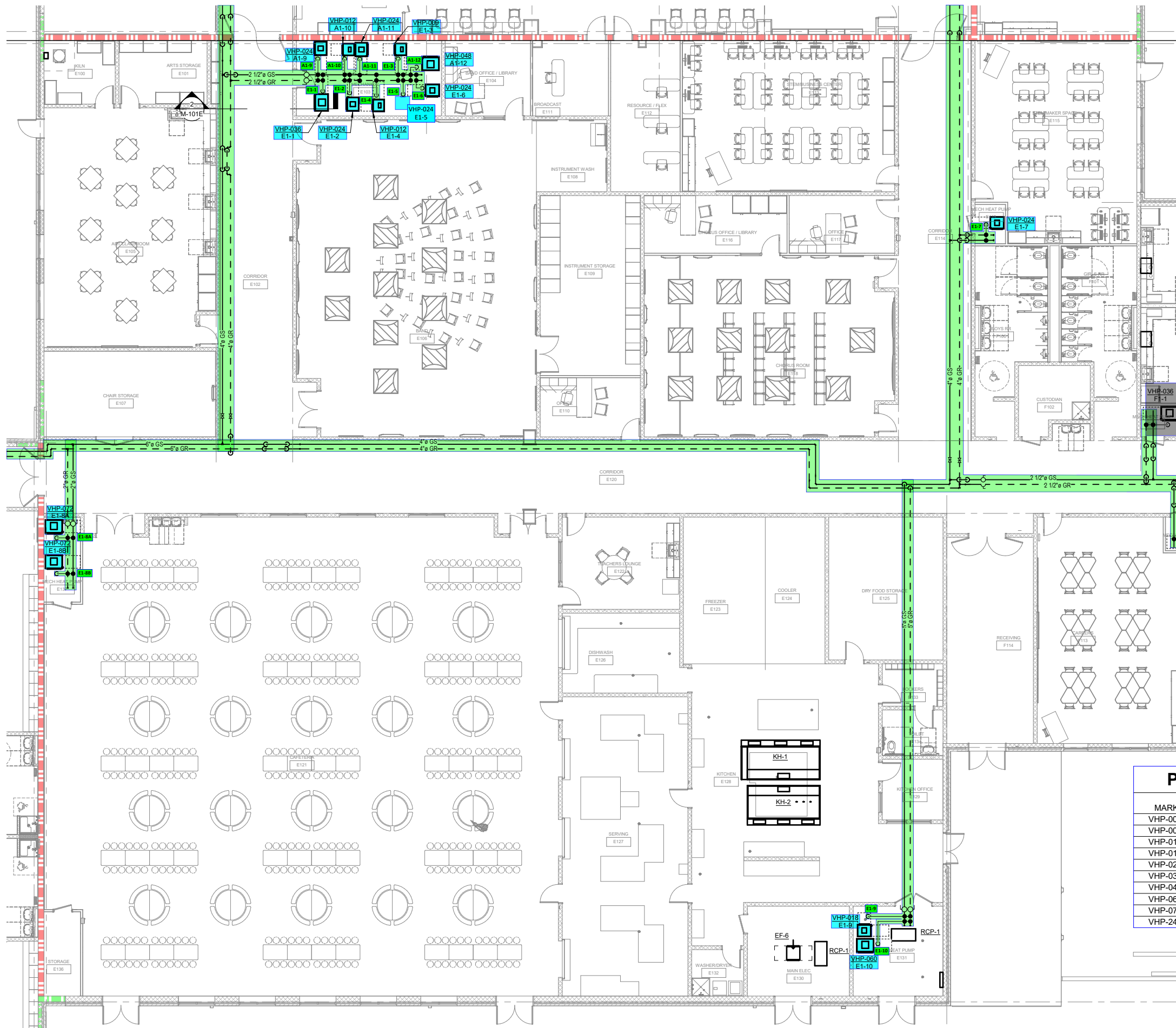


① PARTIAL FIRST FLOOR PLAN - HYDRONICS - AREA C



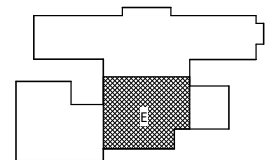
① PARTIAL FIRST FLOOR PLAN - HYDRONICS - AREA D

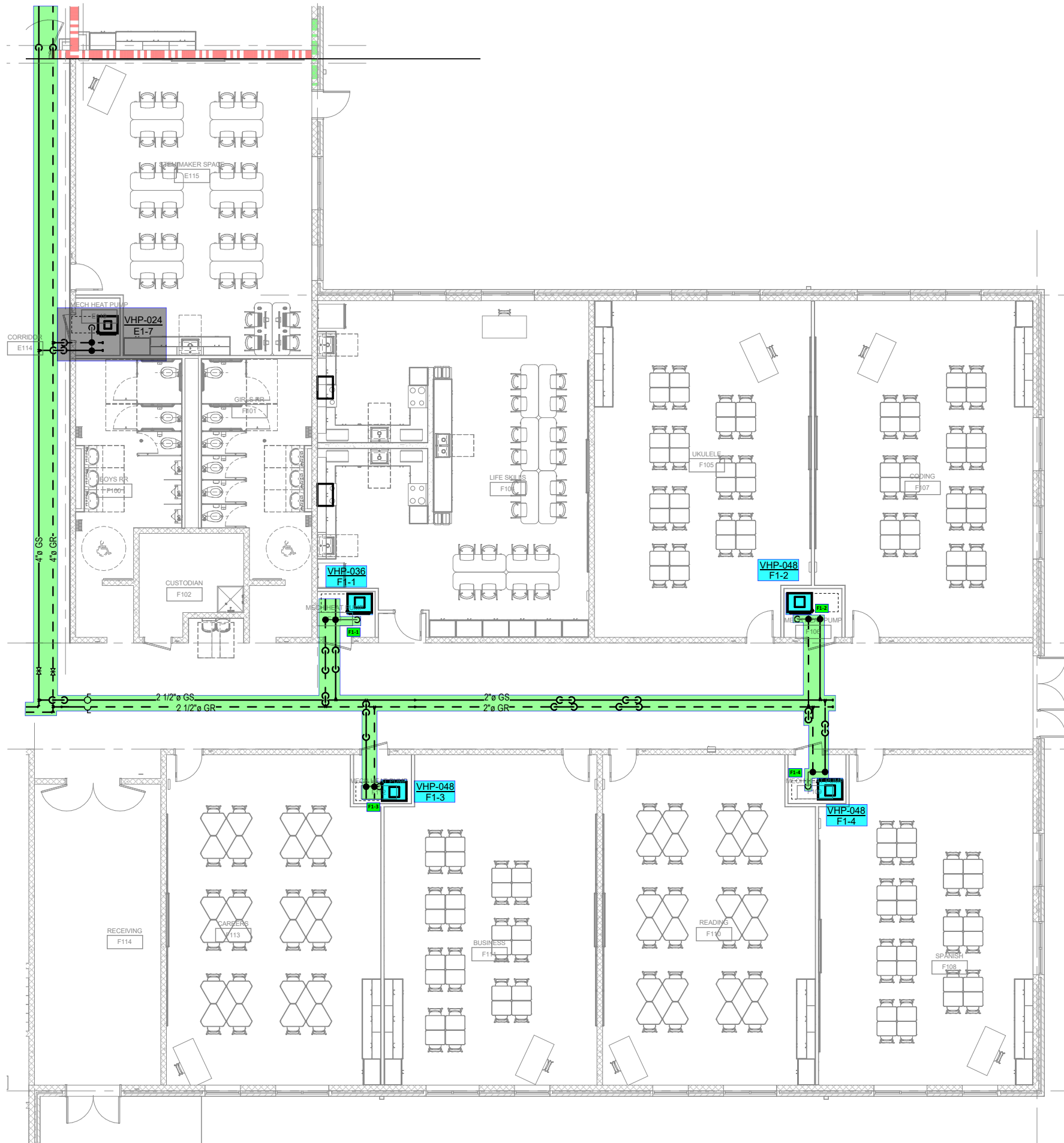




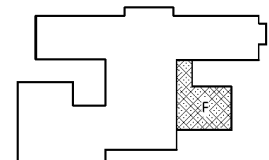
PIPE RUNOUT...		
MARK	CONDENSATE PIPE SIZE	GS/GR PIPE SIZE
VHP-006	3/4"	3/4"
VHP-009	3/4"	3/4"
VHP-012	3/4"	3/4"
VHP-018	3/4"	1"
VHP-024	3/4"	1"
VHP-036	1"	1 1/4"
VHP-048	1"	1 1/4"
VHP-060	1"	1 1/2"
VHP-072	1 1/4"	1 1/2"
VHP-240	1 1/4"	3"

① PARTIAL FIRST FLOOR PLAN - HYDRONICS - AREA E

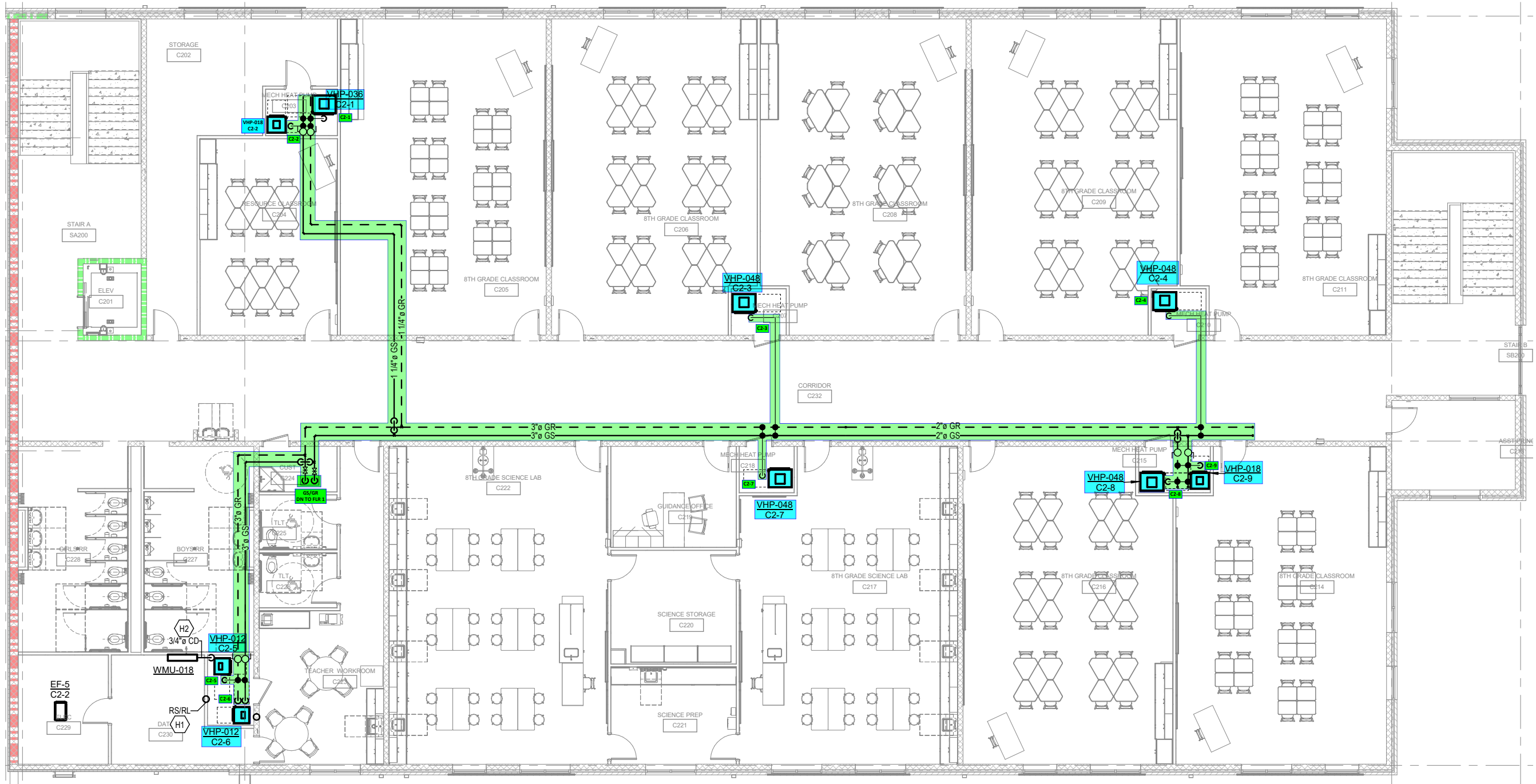




PIPE RUNOUT...		
MARK	CONDENSATE PIPE SIZE	GS/GR PIPE SIZE
VHP-006	3/4"	3/4"
VHP-009	3/4"	3/4"
VHP-012	3/4"	3/4"
VHP-018	3/4"	1"
VHP-024	3/4"	1"
VHP-036	1"	1 1/4"
VHP-048	1"	1 1/4"
VHP-060	1"	1 1/2"
VHP-072	1 1/4"	1 1/2"
VHP-240	1 1/4"	3"

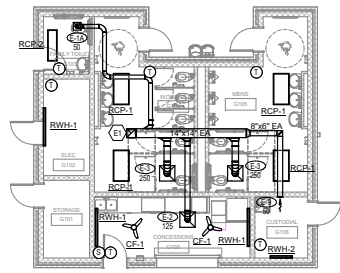


① PARTIAL FIRST FLOOR PLAN - HYDRONICS - AREA F

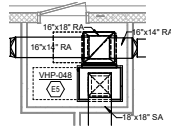


PIPE RUNOUT...		
MARK	CONDENSATE PIPE SIZE	GS/GR PIPE SIZE
VHP-006	3/4"	3/4"
VHP-009	3/4"	3/4"
VHP-012	3/4"	3/4"
VHP-018	3/4"	1"
VHP-024	3/4"	1"
VHP-036	1"	1 1/4"
VHP-048	1"	1 1/4"
VHP-060	1"	1 1/2"
VHP-072	1 1/4"	1 1/2"
VHP-240	1 1/4"	3"

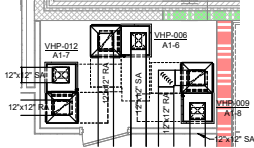
① SECOND FLOOR PLAN - HYDRONICS - AREA C



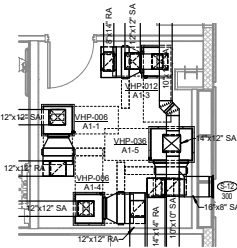
1 FIRST FLOOR PLAN - MECHANICAL - CONCESSION BUILDING  
1/8" = 1'-0"



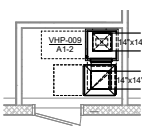
2 TYPICAL CLASSROOM HEAT PUMPS  
1/4" = 1'-0"



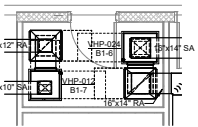
3 HEAT PUMP ROOM A108  
1/4" = 1'-0"



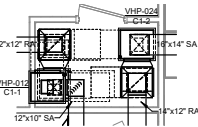
4 HEAT PUMP ROOM A124  
1/4" = 1'-0"



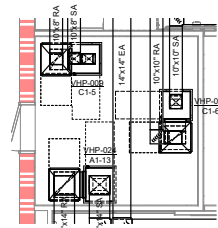
5 HEAT PUMP ROOM B100  
1/4" = 1'-0"



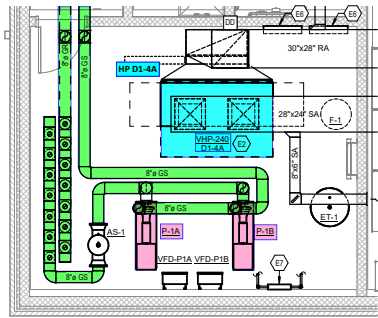
6 HEAT PUMP ROOM B123  
1/4" = 1'-0"



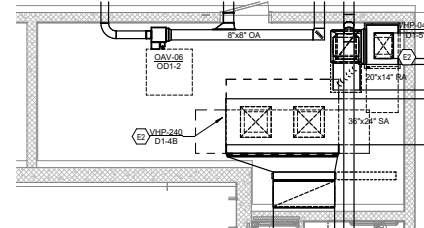
7 HEAT PUMP ROOM C103  
1/4" = 1'-0"



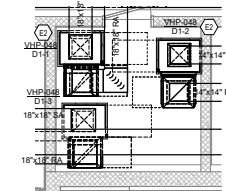
8 HEAT PUMP ROOM C130  
1/4" = 1'-0"



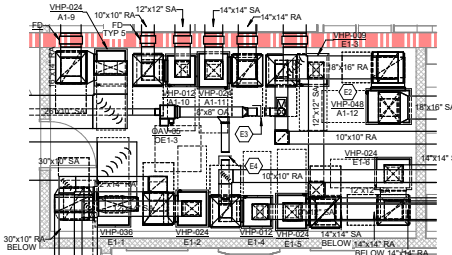
9 MECHANICAL ROOM D103  
1/4" = 1'-0"



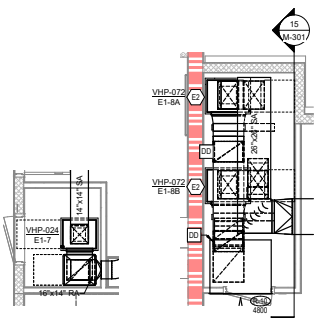
10 MECHANICAL ROOM D114  
1/4" = 1'-0"



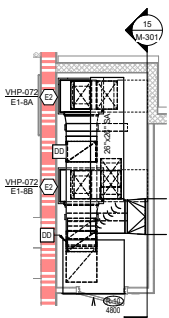
11 HEAT PUMP ROOM D111  
1/4" = 1'-0"



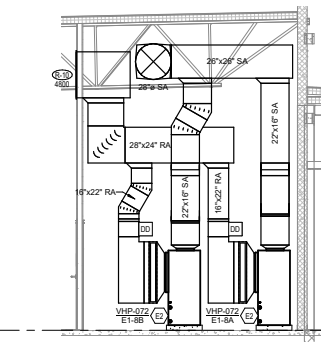
12 MECHANICAL ROOM E103  
1/4" = 1'-0"



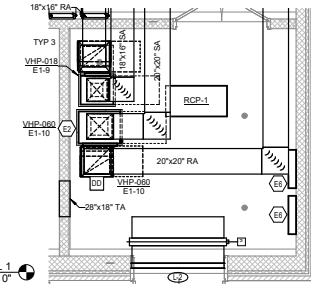
13 HEAT PUMP ROOM E119  
1/4" = 1'-0"



14 HEAT PUMP ROOM E137  
1/4" = 1'-0"

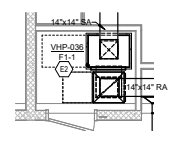


15 HEAT PUMP ROOM E137 - SECTION  
1/4" = 1'-0"

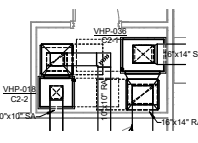


16 HEAT PUMP ROOM E131  
1/4" = 1'-0"

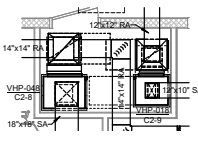
TAGGED NOTES		#
E1	14"x14" EA DUCT UP TO EF ON ROOF.	
E2	PROVIDE UNIT WITH MODULATING HOT GAS REHEAT.	
E3	BALANCE OA DAMPER TO 60 CFM.	
E4	BALANCE OA DAMPER TO 75 CFM.	
E5	REFER TO ZONING LEGENDS ON SHEETS M-002 AND M-003 FOR LOCATIONS OF VHP'S IN TYPICAL CLASSROOM HEAT PUMP CLOSETS.	
E6	BAS PANEL.	
E7	HYDRONIC FILL STATION. REFER TO DETAIL ON M-403 FOR ADDITIONAL INFORMATION. COORDINATE WITH PLUMBING CONTRACTOR.	



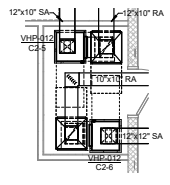
17 HEAT PUMP ROOM F103  
1/4" = 1'-0"



18 HEAT PUMP ROOM C203  
1/4" = 1'-0"



19 HEAT PUMP ROOM C215  
1/4" = 1'-0"



20 HEAT PUMP ROOM C231  
1/4" = 1'-0"