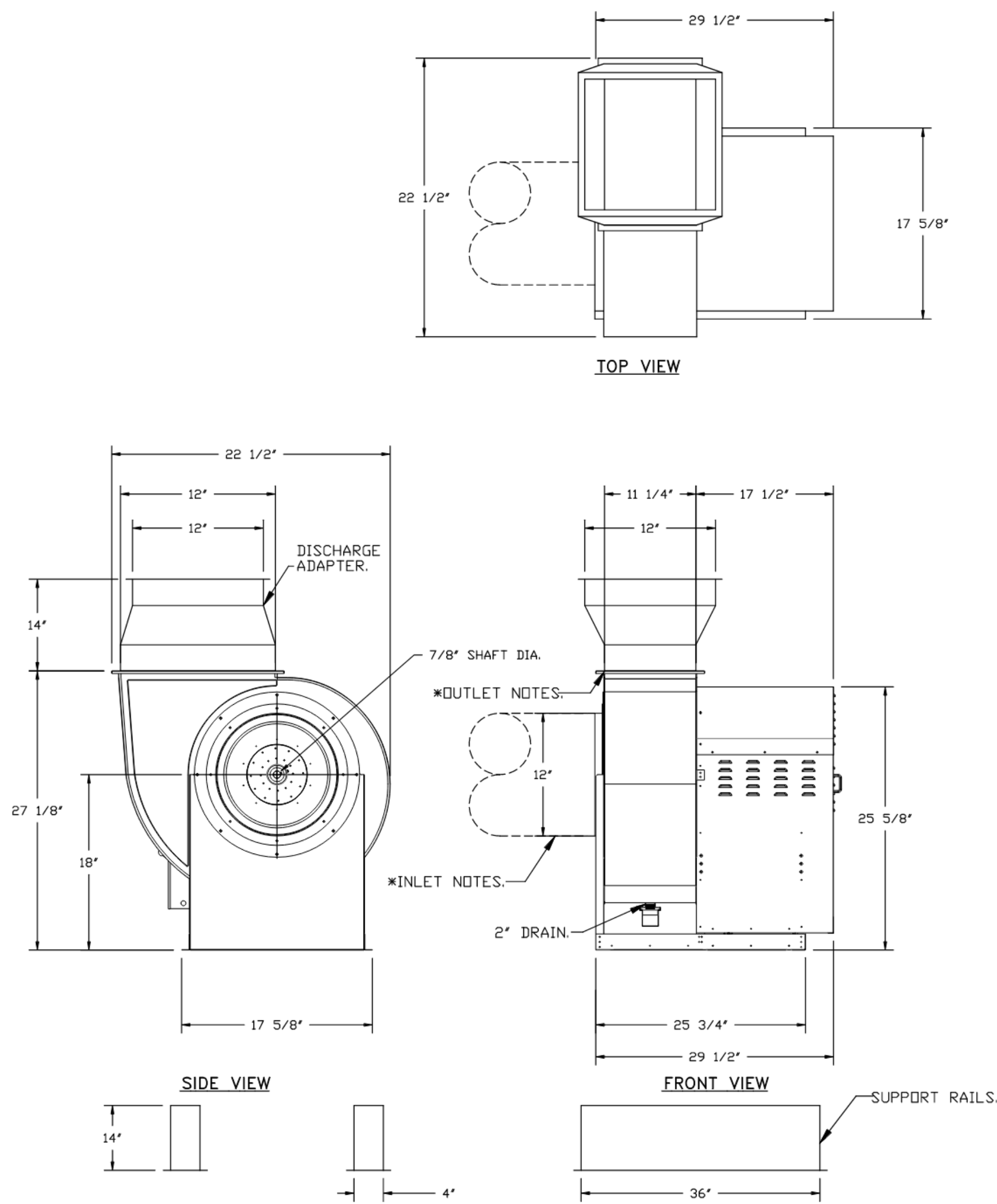


FAN #2_US811DD-RM - EXHAUST FAN_KEF-2 (5'-6" HOOD)



INLET/OUTLET NOTES:
 LENGTH OF THE STRAIGHT DUCT ON THE INLET AND OUTLET TO BE 3 TIMES THE EQUIVALENT DUCT DIAMETER BEFORE CONNECTING TO ANY FITTINGS SUCH AS ELBOWS TO AVOID SYSTEM EFFECT.

UNIT PLAN VIEW CORNER WEIGHTS:
 39 LBS, 32 LBS, 62 LBS, 44 LBS

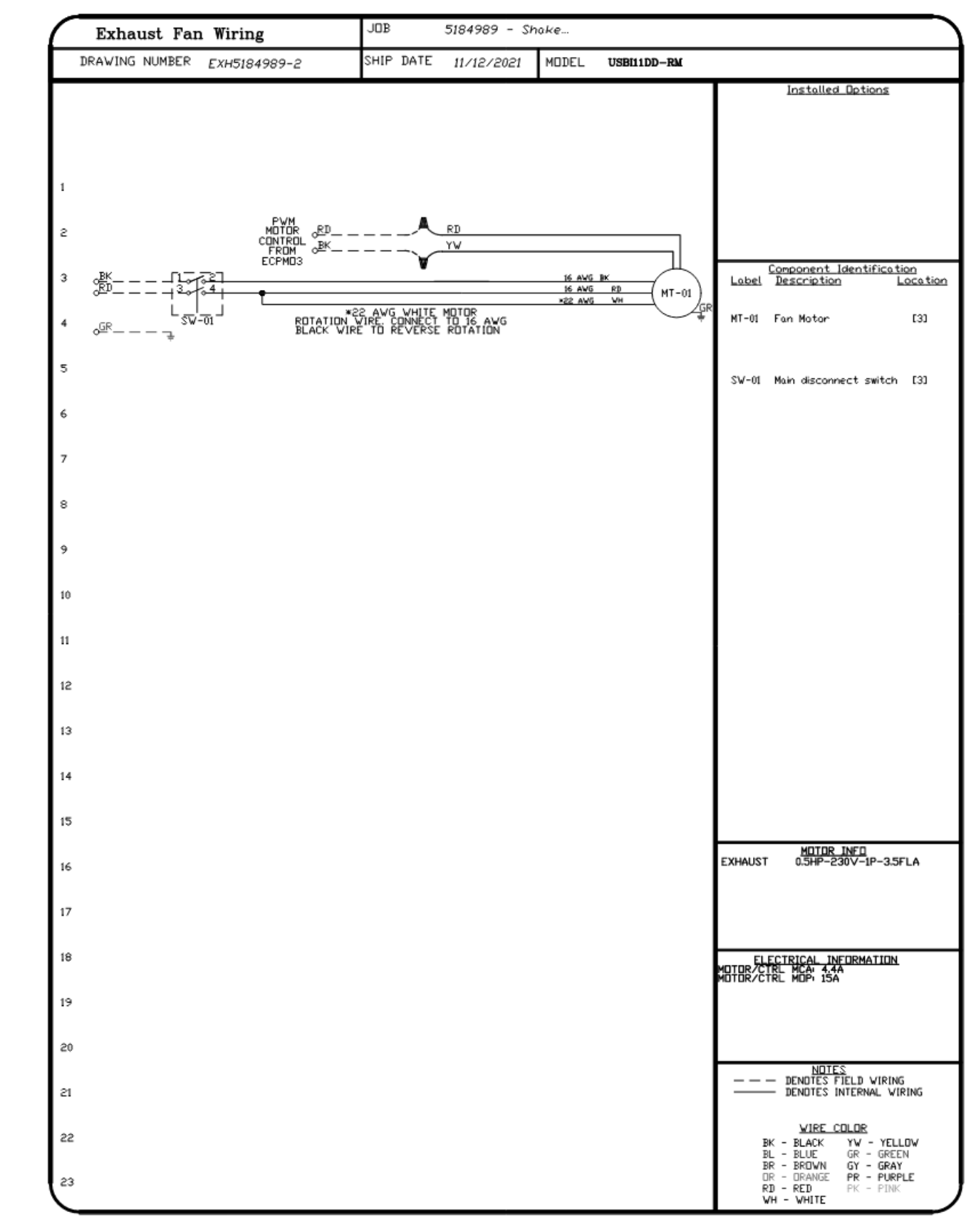
CORNER WEIGHTS ARE CALCULATED BASED ON VERTICAL DISCHARGE. SUPPORT DUCT PROPERLY BEFORE FAN TO ENSURE CORNER WEIGHTS ARE NOT AFFECTED.

INLET

NORMAL TEMPERATURE TEST DIRECT DRIVE EXHAUST FAN MUST OPERATE CONTINUOUSLY WHILE EXHAUSTING AIR AT 350°F (176°C) UNTIL ALL FAN PARTS HAVE REACHED THERMAL EQUILIBRIUM, AND WITHOUT ANY DETERIORATING EFFECTS TO THE FAN WHICH WOULD CAUSE UNSAFE OPERATION.

- FEATURES:**
- ROOF MOUNTED FANS.
 - UL705.
 - UL762 AND ULC-S645 (RESTAURANT MODEL).
 - HIGH HEAT OPERATION DIRECT DRIVE 350°F (176°C).
 - HEAT SLINGER.
 - NEMA 3R SAFETY DISCONNECT SWITCH.
 - GREASE CLASSIFICATION TESTING.
 - 2" DRAIN.
 - MOTOR WEATHER COVER.
 - FULLY SEALED SCROLL HOUSING.
 - SCROLL ACCESS DOOR.
 - FLANGE 1 1/4".

- OPTIONS:**
- B111 - INLET SERVICE DUCT CONNECTION. USED TO CONNECT TO STANDARD 12" GREASE DUCT OR FIELD WELDED DUCT. INCLUDES (2) 7" RISERS BOLTED TO STANDARD INLET RISERS.
 - UTILITY SET GREASE CLIP.
 - B11 - INLET CONNECTION STANDARD 12" FLANGED GREASE DUCT.
 - B1 - DISCHARGE ORIENTATION VERTICAL UPPER LEFT - CW INLET SIDE.
 - B111 - 12" DISCHARGE ADAPTER.
 - EIM WIRING PACKAGE - PUM SIGNAL FROM EDM03 PREWIRE (TELCO MOTOR), CCW ROTATION.
 - 2 YEAR PARTS WARRANTY.



REVISIONS

| NO. | DESCRIPTION | DATE |
|-----|-------------|------|
| 1 | | |
| 2 | | |
| 3 | | |
| 4 | | |
| 5 | | |
| 6 | | |

CAPTIVE

Eastern PA Mechanical

PO Box 2520, 1 Union Ave. Bala Cynwyd, PA, 19004 PHONE: (267) 504-4126 EMAIL: rog108@captiveaire.com

Shake Shack-1405-Silverlake, CA-R2
 LOS ANGELES, CA, 90039

DATE: 11/12/2021

DWG.#: 5184989

DRAWN BY: Joe.shilba

SCALE: 3/4" = 1'-0"

MASTER DRAWING

SHEET NO. 2

Gensler

500 South Figueroa Street
 Los Angeles, California 90071
 United States
 Contact:
 Bryan Walsingham
 Tel 213.239.8240

Tel 213.27.3600
 Fax 213.27.3601



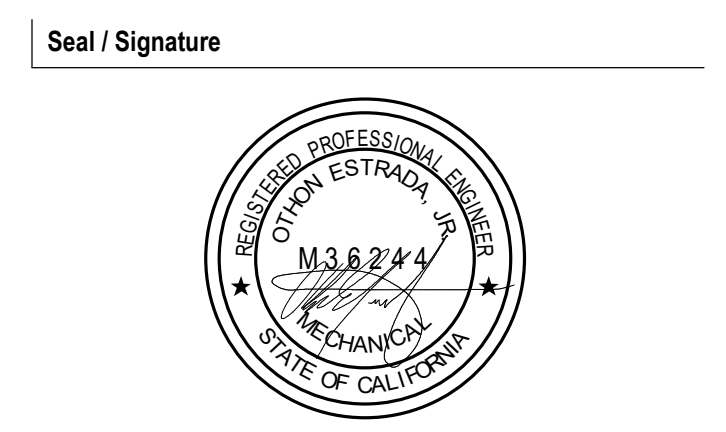
2361 ROSECRANS AVENUE
 SUITE 368
 EL SEGUNDO, CA 90245
 Tel 310.725.1500
 Fax 310.725.4699



505 COLLINS ST
 PO BOX 3505
 SOUTH ATTLEBORO
 MA 02703
 Tel 508.399.6000
 Fax 508.761.3620

Contact:
 Michael Henderson
 Tel 508.399.2392

| Date | Description |
|--------------|------------------------|
| 11/15/2021 | ISSUE FOR PERMIT/BD |
| 1 01/31/2022 | ADDENDUM 1 |
| 2 03/04/2022 | ADDENDUM 2 |
| 3 04/29/2022 | ADDENDUM 3 |
| 5 06/30/2022 | FIELD NOTICE #1 |
| 6 08/02/2022 | ISSUE FOR CONSTRUCTION |



Project Name
 SHAKE SHACK - SILVERLAKE

Project Number
 05.3757.000

Description
 CAPTIVEAIRE DRAWINGS

Scale

M802

