

# PlanGrid Task Report - Jul 15, 2025

Prepared by Michael McDonnell

Jul 15, 2025

## Description

18 tasks in this report.

## Contents

#12 [DUCT 003] [NEW] CRITICAL – Canvas connections. ....	2
#13 [DUCT 001] [NEW] CRITICAL – Double thickness turning vanes.....	4
#14 [DUCT 008] [NEW] CRITICAL – Start collar damper orientation. ....	6
#15 [DUCT 019] [NEW] CRITICAL – Incorrectly lined insulation. ....	8
#16 [DUCT 000] [NEW] CRITICAL – Takeoff too close to transition. ....	11
#17 [DUCT 999] [NEW] (MISC) Roofing Material in AC-4 Discharge .....	14
#18 [UNIT 507] [NEW] Transformer voltage.....	15
#19 [UNIT 508] [NEW] AC Outdoor air intake caulking .....	16
#20 [REFG 999] [NEW] (MISC) WIF/WIC Condenser Orientation.....	18
#21 [EXHA 002] [NEW] CRITICAL – Exhaust fan has wrong motor. ....	19
#22 [EXHA 999] [NEW] (MISC) Grease Duct Proximity to Parapet .....	21
#23 IN PROGRESS (INFO ONLY): SAG/RAG/GRILLE Take-offs .....	23
#24 IN PROGRESS (INFO ONLY): Grease Duct / Exhaust Fan Specifications .....	25
#25 IN PROGRESS (INFO ONLY): Control Wiring .....	26
#26 IN PROGRESS (INFO ONLY): AC Condensate Drains .....	27
#27 IN PROGRESS (INFO ONLY): Equipment Fresh Air Tempering. ....	28
#28 [UNIT 521] [NEW] Equipment is missing specified options.....	30
#29 [EXHA 999] [NEW] (MISC) EF-2 is Rubbing .....	31

## #12 [DUCT 003] [NEW] CRITICAL – Canvas connections.

### Status

Open

### Created

Jul 15, 2025 4:39 PM  
mmcdonnell@nationaltab.com

### Type

Issue

### Last Updated

Jul 15, 2025 5:50 PM

### Description

Canvas connections are installed but are not serving their purpose. The canvas is pinched and metal from the top and the bottom is making contact, failing to isolate the ductwork from the unit. Recommend all AC canvas connectors are reviewed.

### Photos



IMG\_9638

**Michael McDonnell**

Jul 15, 2025 5:50 PM

---

## #13 [DUCT 001] [NEW] CRITICAL – Double thickness turning vanes.

### Status

Open

### Created

Jul 15, 2025 4:41 PM  
mmcdonnell@nationaltab.com

### Type

Issue

### Last Updated

Jul 15, 2025 5:52 PM

### Description

Double thickness turning vanes are present in the system. Per specification only single thickness are to be installed in 90 degree turns where any dimension is greater than 12". Duct is not designed to accommodate the static drop across double thickness vanes. Remove and replace. Unable to balance system until corrected.

### Comments

Vanes have crimp marks, indicating they are double thickness.

Michael McDonnell Jul 15, 2025

Recommend verifying these are single thickness.

Michael McDonnell Jul 15, 2025

### Photos



IMG\_9637  
**Michael McDonnell**  
Jul 15, 2025 5:52 PM



IMG\_9632  
**Michael McDonnell**  
Jul 15, 2025 5:52 PM

## #14 [DUCT 008] [NEW] CRITICAL – Start collar damper orientation.

**Status**  
Open

**Type**  
Issue

### Description

Dampers to be installed parallel to airflow. In horizontal runs, position damper on left or right at 9 or 3 o'clock. On vertical ducts position damper on bottom only (6 o'clock).

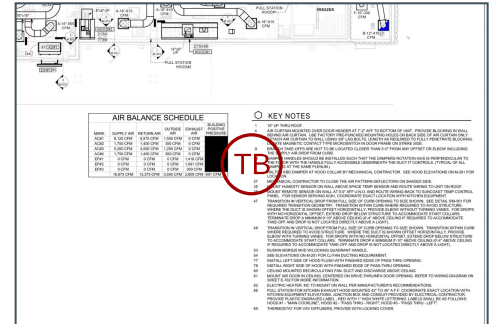
AC-1 Return dampers need to be reoriented. Note 12 pertains to all returns on that plenum. Note lacks clarity as plans show noted damper on bottom, but all others on plenum on the side. Recommend plans are reviewed.

### Photos

**Created**  
Jul 15, 2025 4:43 PM  
mmcdonnell@nationaltab.com

**Last Updated**  
Jul 15, 2025 6:41 PM

**Sheet**  
M-101L





IMG\_9689  
**Michael McDonnell**  
Jul 15, 2025 5:53 PM



IMG\_9688  
**Michael McDonnell**  
Jul 15, 2025 5:53 PM

## #15 [DUCT 019] [NEW] CRITICAL – Incorrectly lined insulation.

**Status**

Open

**Created**

Jul 15, 2025 4:45 PM  
mmcdonnell@nationaltab.com

**Type**

Planned Work

**Last Updated**

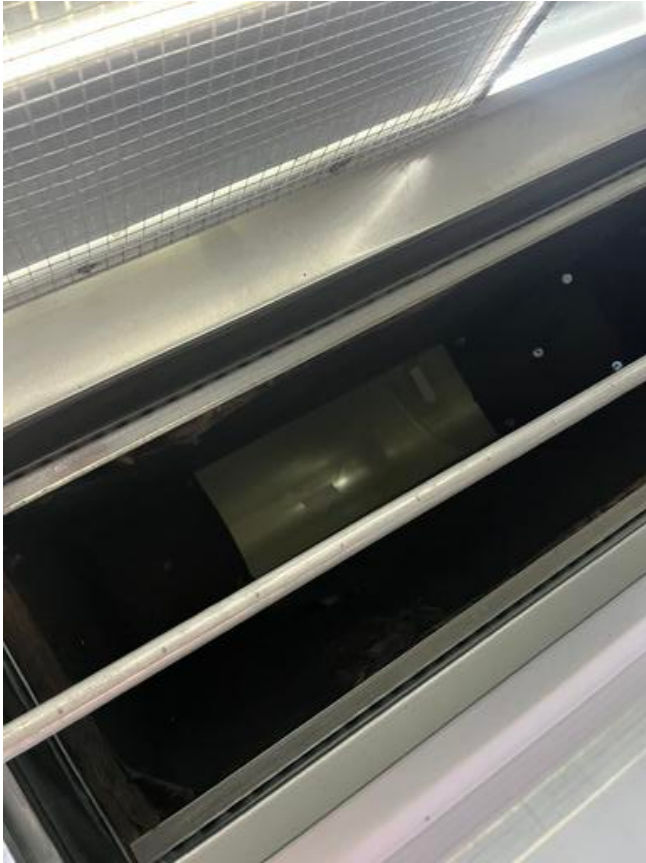
Jul 15, 2025 5:54 PM

**Description**

Duct is lined and restricts inside clear dimensions, remove and externally insulate. Only restroom rectangular duct is to be lined.

On all AC units, both the Supply and Return Drops are internally lined and externally insulated. Remove internal liner.

**Photos**



IMG\_9648  
Michael McDonnell  
Jul 15, 2025 5:54 PM



IMG\_9665  
Michael McDonnell  
Jul 15, 2025 5:54 PM



IMG\_9640

**Michael McDonnell**

Jul 15, 2025 5:54 PM

**#16 [DUCT 000] [NEW] CRITICAL – Takeoff too close to transition.**

**Status**

Open

**Created**

Jul 15, 2025 4:48 PM  
mmcdonnell@nationaltab.com

**Type**

Issue

**Last Updated**

Jul 15, 2025 5:55 PM

**Description**

Takeoff does not maintain 3'0" from offset or drop transition per specification. Recommend moving takeoffs away from drop to avoid potential low airflow issue.

**Photos**



IMG\_9605  
Michael McDonnell  
Jul 15, 2025 5:55 PM



IMG\_9606  
Michael McDonnell  
Jul 15, 2025 5:55 PM



IMG\_9607  
**Michael McDonnell**  
Jul 15, 2025 5:55 PM



IMG\_9604  
**Michael McDonnell**  
Jul 15, 2025 5:55 PM

## #17 [DUCT 999] [NEW] (MISC) Roofing Material in AC-4 Discharge

**Status**

Open

**Created**

Jul 15, 2025 4:50 PM  
mmcdonnell@nationaltab.com

**Type**

Issue

**Last Updated**

Jul 15, 2025 5:56 PM

**Description**

Recommend Roofing material in supply discharge is cut away.

**Photos**



IMG\_9636

Michael McDonnell

Jul 15, 2025 5:56 PM

## #18 [UNIT 507] [NEW] Transformer voltage.

**Status**

Open

**Created**

Jul 15, 2025 4:51 PM  
mmcdonnell@nationaltab.com

**Type**

Issue

**Last Updated**

Jul 15, 2025 5:57 PM

**Description**

The transformer voltage is not swapped to the correct input voltage.

**Photos**



IMG\_9678

Michael McDonnell

Jul 15, 2025 5:57 PM

## #19 [UNIT 508] [NEW] AC Outdoor air intake caulking

**Status**

Open

**Created**

Jul 15, 2025 4:52 PM  
mmcdonnell@nationaltab.com

**Type**

Issue

**Last Updated**

Jul 15, 2025 5:57 PM

**Description**

OAs must be caulked/  
gasketed to prevent water  
infiltration.

**Comments**

Caulk OA hoods

Michael McDonnell Jul 15, 2025

**Photos**



IMG\_9676  
Michael McDonnell  
Jul 15, 2025 5:57 PM



IMG\_9677  
Michael McDonnell  
Jul 15, 2025 5:57 PM

## #20 [REFG 999] [NEW] (MISC) WIF/WIC Condenser Orientation

**Status**

Open

**Created**

Jul 15, 2025 4:55 PM  
mmcdonnell@nationaltab.com

**Type**

Issue

**Last Updated**

Jul 15, 2025 5:59 PM

**Description**

Recommend orientation of Condensers is reviewed. WIF condenser is discharging in general direction of AC-1 and AC-4 Outdoor air intakes.

**Photos**



IMG\_9654  
Michael McDonnell  
Jul 15, 2025 5:58 PM



IMG\_9655  
Michael McDonnell  
Jul 15, 2025 5:58 PM





IMG\_9659  
 Michael McDonnell  
 Jul 15, 2025 6:00 PM



IMG\_9627  
 Michael McDonnell  
 Jul 15, 2025 6:00 PM

FAN SCHEDULE

MARK	FAN CFM	ESP (in-wg)	MOTOR RPM	HP	AREA SERVED	VOLTAGE (V)	P
CF#1	1,900	0.01	1,625	0.1	OUTDOOR CANOPY	120	
EF#1	1,418	0.75	1,340	0.75	HOOD#1	120	
EF#2	1,091	0.95	2,000	0.75	HOOD#2 & HOOD#3	120	
EF#3	300	0.375	1,550	0.125	RESTROOMS	120	
TF#1	450	0.3	1,144	0.127	TECH CLOSET	120	

IMG\_9768  
 Michael McDonnell  
 Jul 15, 2025 6:00 PM

# #22 [EXHA 999] [NEW] (MISC) Grease Duct Proximity to Parapet

## Status

Open

## Type

Issue

## Description

Key Note 87 on M-102L indicates all duct penetrations on roof must be at least 18" from parapet. EF-1 duct penetration does not comply. Recommend Review.

## Photos

## Created

Jul 15, 2025 5:02 PM  
mmcdonnell@nationaltab.com

## Last Updated

Jul 15, 2025 6:04 PM

## Sheet

M-102L

PROJECT	DATE
ALLIANCE FSU	07/15/2025
DRAWN BY	MMCDONNELL
CHECKED BY	
SCALE	AS SHOWN
SHEET NO.	1



IMG\_9669  
**Michael McDonnell**  
Jul 15, 2025 6:04 PM



IMG\_9668  
**Michael McDonnell**  
Jul 15, 2025 6:04 PM

## #23 IN PROGRESS (INFO ONLY): SAG/RAG/GRILLE Take-offs

### Status

Open

### Type

Issue

### Description

Installation in progress.  
Refer to Detail 1 on M-501.  
Flex must be used, but only in the horizontal. Rigid 90s and rigid pipe in vertical must connect to diffuser. Be sure flex connections are banded AND taped on inner core, and banded or taped on outer core.

### Photos

### Created

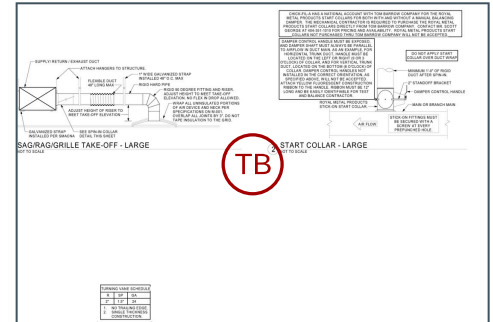
Jul 15, 2025 5:06 PM  
mmcdonnell@nationaltab.com

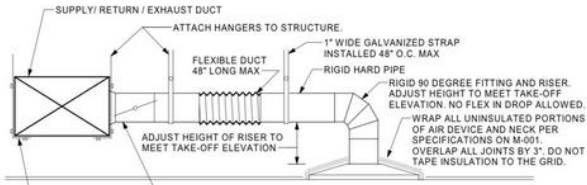
### Last Updated

Jul 15, 2025 6:17 PM

### Sheet

M-501





1 SAG/RAG/GRILLE TAKE-OFF - LARGE  
NOT TO SCALE

IMG\_9771  
Michael McDonnell  
Jul 15, 2025 6:17 PM



IMG\_9687  
Michael McDonnell  
Jul 15, 2025 6:07 PM

## #24 IN PROGRESS (INFO ONLY): Grease Duct / Exhaust Fan Specifications

**Status**  
Open

**Type**  
Issue

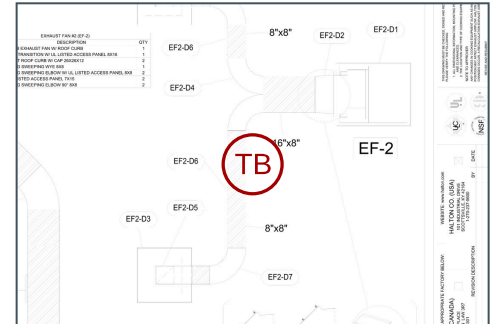
### Description

Installation in progress.  
 Refer to H-1.5 for cleanout door quantity, location, and type. Review Exhaust fan specs on M-501 for duct support stand specifications, G2 drip guard, etc.

**Created**  
 Jul 15, 2025 5:10 PM  
 mmcdonnell@nationaltab.com

**Last Updated**  
 Jul 15, 2025 6:16 PM

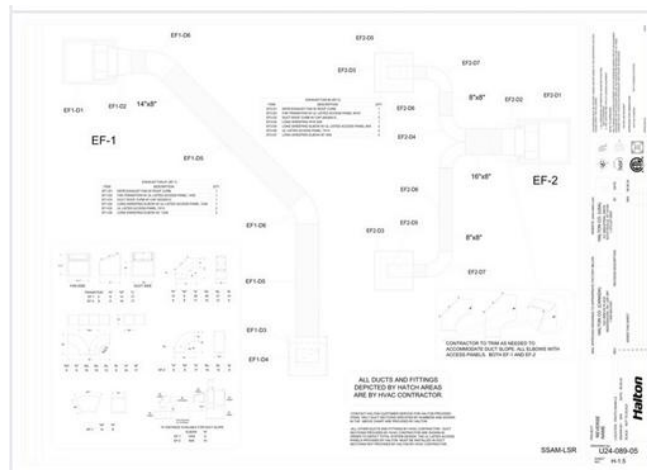
**Sheet**  
MH-1.5



### Photos



IMG\_9625  
 Michael McDonnell  
 Jul 15, 2025 6:16 PM



IMG\_9767  
 Michael McDonnell  
 Jul 15, 2025 6:02 PM

## #25 IN PROGRESS (INFO ONLY): Control Wiring

Status  
Open

Type  
Planned Work

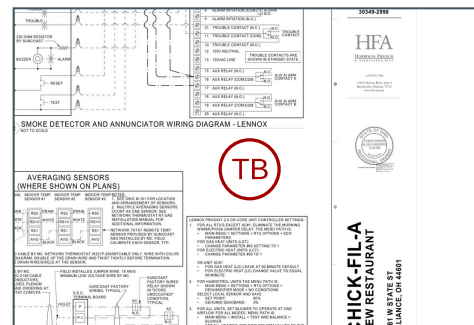
### Description

Control wiring in progress. Recommend M-701L is reviewed for control wiring specifications. Please note label requirements for annunciators and all sensors.

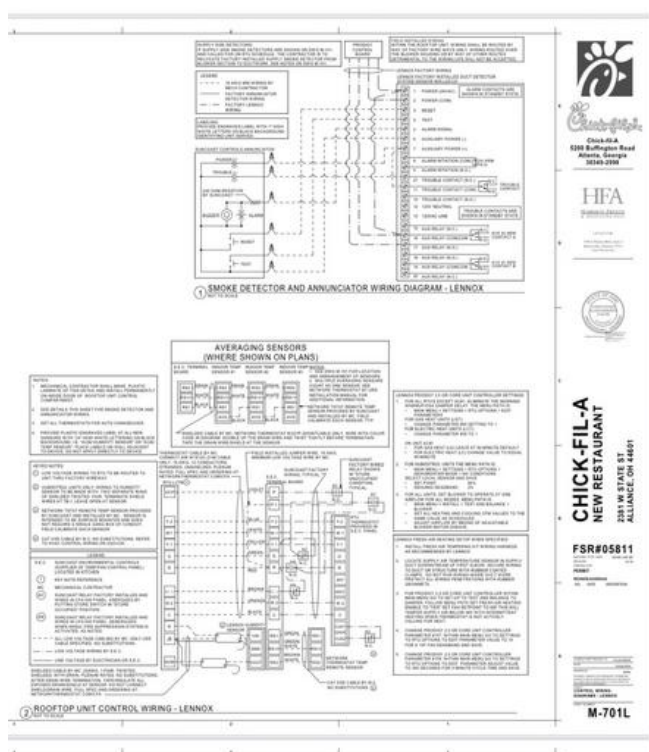
Created  
Jul 15, 2025 5:12 PM  
mmcdonnell@nationaltab.com

Last Updated  
Jul 15, 2025 6:01 PM

Sheet  
M-701L



### Photos



IMG\_9766  
Michael McDonnell  
Jul 15, 2025 6:01 PM

## #26 IN PROGRESS (INFO ONLY): AC Condensate Drains

**Status**  
Open

**Type**  
Planned Work

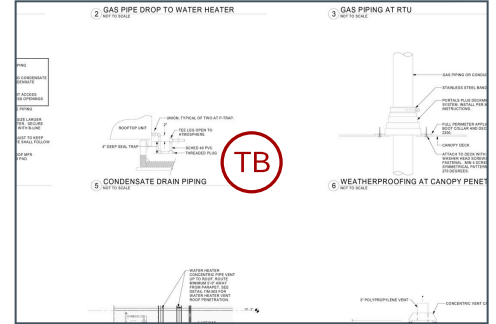
### Description

AC unit condensate drains are not yet installed. See detail 5 on M-503 for exact specifications.

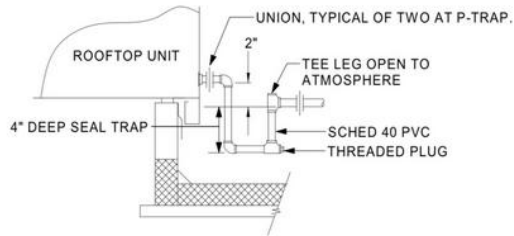
**Created**  
Jul 15, 2025 5:17 PM  
mmcdonnell@nationaltab.com

**Last Updated**  
Jul 15, 2025 6:01 PM

**Sheet**  
M-503



### Photos



**5 CONDENSATE DRAIN PIPING**  
NOT TO SCALE

IMG\_9769  
**Michael McDonnell**  
Jul 15, 2025 6:01 PM

## #27 IN PROGRESS (INFO ONLY): Equipment Fresh Air Tempering.

**Status**  
Open

**Type**  
Planned Work

### Description

RTU Schedule indicates AC units are to have Fresh Air Tempering: Units with Fresh Air Tempering kits are to have the discharge sensor routed per specification into the discharge duct via wiring portal. The sensor should be installed after the first 90. For Lennox turn on FAH and set parameter #156 to 60 in Kitchen, 62 in Drive-Thru/Serving, & 63 in Dining/Play Area; then set parameters #157 to 14 & #158 to 300 on all.

### Comments

See Notes on M-701L

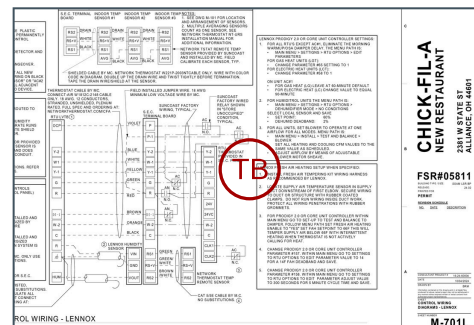
Michael McDonnell Jul 15, 2025

### Photos

**Created**  
Jul 15, 2025 5:47 PM  
mmcdonnell@nationaltab.com

**Last Updated**  
Jul 15, 2025 6:12 PM

**Sheet**  
M-701L



## L05811\_Alliance (OH) FSU

2381 West State Street, Alliance, Ohio

L1020005811

### LENNOX FRESH AIR HEATING SETUP WHEN SPECIFIED:

1. INSTALL FRESH AIR TEMPERING KIT WIRING HARNESS AS RECOMMENDED BY LENNOX.
2. LOCATE SUPPLY AIR TEMPERATURE SENSOR IN SUPPLY DUCT DOWNSTREAM OF FIRST ELBOW. SECURE WIRING TO DUCT OR STRUCTURE WITH RUBBER COATED CLAMPS. DO NOT RUN WIRING INSIDE DUCT WORK. PROTECT ALL WIRING PENETRATIONS WITH RUBBER GROMMETS.
3. FOR PRODIGY 2.0 OR CORE UNIT CONTROLLER WITHIN MAIN MENU GO TO SET-UP TO TEST AND BALANCE TO DAMPER. FOLLOW MENU PATH SET FRESH AIR HEATING ENABLE TO "YES" SET FAH SETPOINT TO 66F THIS WILL TEMPER SUPPLY AIR BELOW 66F WITH INTERMITTENT HEATING WHEN THERMOSTAT IS NOT ACTIVELY CALLING FOR HEAT.
4. CHANGE PRODIGY 2.0 OR CORE UNIT CONTROLLER PARAMETER #157. WITHIN MAIN MENU GO TO SETTINGS TO RTU OPTIONS TO EDIT PARAMETER VALUE TO 14 FOR A 14F FAH DEADBAND AND SAVE.
5. CHANGE PRODIGY 2.0 OR CORE UNIT CONTROLLER PARAMETER #158. WITHIN MAIN MENU GO TO SETTINGS TO RTU OPTIONS TO EDIT PARAMETER ADJUST VALUE TO 300 SECONDS FOR 5 MINUTE CYCLE TIME AND SAVE.

IMG\_9774

**Michael McDonnell**

Jul 15, 2025 6:12 PM

---

## #28 [UNIT 521] [NEW] Equipment is missing specified options.

### Status

Open

### Created

Jul 15, 2025 6:32 PM  
mmcdonnell@nationaltab.com

### Type

Planned Work

### Last Updated

Jul 15, 2025 6:36 PM

### Description

RTU Schedule indicates AC-1 (kitchen) is to have power exhaust installed. Forgot to verify, but do not remember seeing power exhaust fans installed below OA intake at relief. Please verify AC-1 has Power Exhaust option installed and it is operational once powered.

### Photos



IMG\_9641

Michael McDonnell

Jul 15, 2025 6:33 PM

## #29 [EXHA 999] [NEW] (MISC) EF-2 is Rubbing

**Status**

Open

**Created**

Jul 15, 2025 6:37 PM  
mmcdonnell@nationaltab.com

**Type**

Issue

**Last Updated**

Jul 15, 2025 6:39 PM

**Description**

EF-2 blower wheel needs adjustment. The fan rubs when it is spun. Typically, the fan needs to be moved further in, towards the duct

**Photos**



IMG\_9675  
**Michael McDonnell**  
Jul 15, 2025 6:38 PM  
[Download video](#)



IMG\_9674  
**Michael McDonnell**  
Jul 15, 2025 6:38 PM