

Report By:

National TAB
1329 E. KEMPER ROAD
SUITE 4210
CINCINNATI, OH 45246



Report: TAB REPORT
Function: Test, Adjust, & Balance
Date: 10/30/2024
Completed By: National TAB

PROJECT
10-28-24 WAWA #5412 PLANTATION, FL

100 S PINE ISLAND RD

PLANTATION, FL 33324

Client

Wawa
260 West Baltimore Pike
Wawa, PA 19063

National TAB

Project: 10-28-24 WAWA #5412 PLANTATION, FL

Table Of Contents

Section	Page #
Issue Data	3
AHU/RTU	9
FAN - Exhaust	15
GRD Layout	18

Issue List

- Diffuser 2-4 - Damper Jammed
- Diffuser 3-7 - Low Flow
- Diffusers 1-5 and 1-6 - Low Flow
- EFs Not Powered
- Missing Dampers

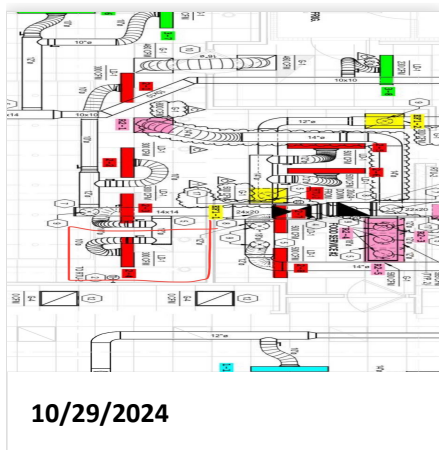


10-28-24 WAWA #5412 PLANTATION, FL

Project Issue Information

Issue Name : Diffuser 2-4 - Damper Jammed
Description : The damper for diffuser 2-4 (food service) is stuck and cannot fully close. Damper must be closed further to bring the diffuser within design airflow.
Created By : National TAB **Assigned To :** National TAB - Will Turnbough
Status : Closed
Priority : Urgent **Asset Tag :** SGRD4
Originated Date : 10/29/2024 - Mark Johnson - National TAB

Project Issue File Details



Project Issue Response Details

- **10/30/2024 National TAB - Mark Johnson**
 - Resolved; diffuser is balanced

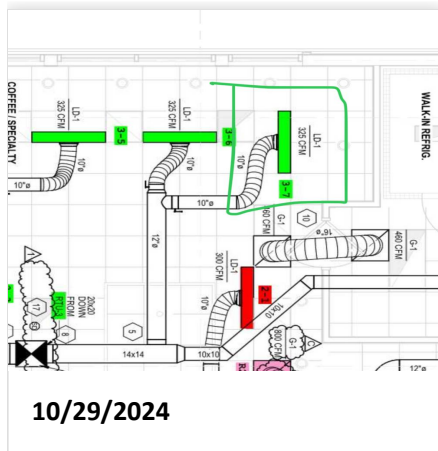


10-28-24 WAWA #5412 PLANTATION, FL

Project Issue Information

Issue Name : Diffuser 3-7 - Low Flow
Description : Supply diffuser 3-7 (Coffee / Specialty Beverage) is currently at an airflow of 222 CFM (68% design). Damper is fully opened. Not expected to cause comfort issues in the surrounding space.
Created By : National TAB **Assigned To :** National TAB - Will Turnbough
Status : Open
Priority : Medium **Asset Tag :** SGRD7
Originated Date : 10/29/2024 - Mark Johnson - National TAB

Project Issue File Details





10-28-24 WAWA #5412 PLANTATION, FL

Project Issue Information

Issue Name : EFs Not Powered
Description : Both exhaust fans do not yet have power. Must be turned on for balancing.
Created By : National TAB **Assigned To :** National TAB - Will Turnbough
Status : Closed
Priority : Urgent **Asset Tag :** EF1
Originated Date : 10/29/2024 - Mark Johnson - National TAB

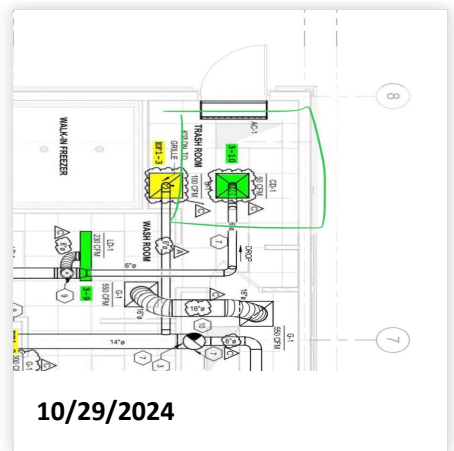
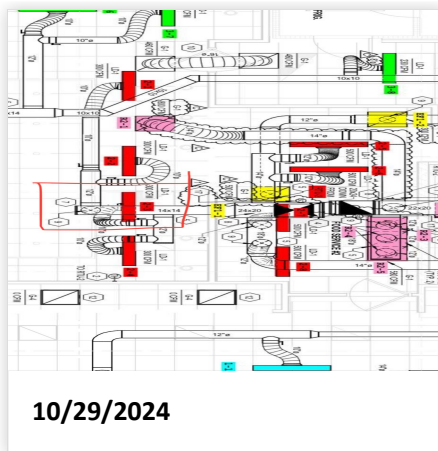
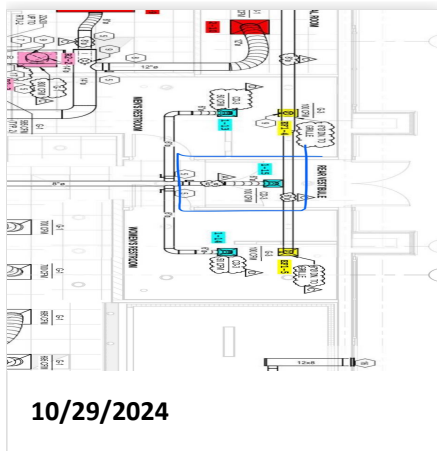


10-28-24 WAWA #5412 PLANTATION, FL

Project Issue Information

Issue Name : Missing Dampers
Description : Dampers are missing or could not be located for the following supply diffusers: 1-15 (rear vestibule), 2-3 (food service), 3-10 (trash room). Unable to complete balancing until resolved.
Created By : National TAB **Assigned To :** National TAB - Will Turnbough
Status : Closed
Priority : Urgent **Asset Tag :** SGRD15
Originated Date : 10/29/2024 - Mark Johnson - National TAB

Project Issue File Details





National TAB

Project: 10-28-24 WAWA #5412 PLANTATION, FL

System/Unit: AHU/RTU



Asset: RTU1

AREA:RETAIL

Unit Data		
	Design	Actual
MFG	LENNOX	LENNOX
Serial Num	-	5623G05415
Model Num	LCT102H4E	LCT102H4EC1Y
Type	RTU	RTU
Configuration	VERTICAL	VERTICAL
Num OA Filters 1	-	1
OA Filter Size 1	-	23x14
Num Final Filter 1	-	4
Final Filter Size 1	-	20x25x2

Motor Data		
	Design	Actual
Motor MFG	-	EBMPAPST
Frame	-	NL
Horsepower	3.75	3.8
Motor Rpm	-	2200
Phase	3	3
Rated Voltage	208	200-240
Rated Amperage	-	8.7
Service Factor	-	NL

Drive Data	
	Actual
Motor Sheave Size	DD
Motor Bore Size	DD
Motor Sheave SetPt	DD
Fan Sheave Size	DD
Fan Sheave Bore	DD
Belt CL Distance	DD
Num of Belts	DD
Belt Size	DD

Test Data		
	Design	Actual
SF CFM	3400	3316
SF RPM	-	1342
MOTOR RPM	-	1342
RA CFM	2790	
OA CFM	610	
RL Voltage	-	211/212/214
RL Amperage	-	2.7/2.6/2.4
SF System SetPt	-	61%
OA Damper Position	-	42%
OA Damper Type	-	SINGLE BLADE

Performance Data		
	Design	Actual
MA Plenum SP	-	
Fan Suction SP	-	
Fan Discharge SP	-	
Total ESP	0.5"	
Fan Total SP	-	



National TAB

Project:10-28-24 WAWA #5412 PLANTATION, FL

AHU/RTU



Diffuser Supply (GRD)

RTU1/RETAIL

Asset									
Asset Name	Location	Type	Size	DESIGN CFM	AK	CFM(1)	CFM(2)	FINAL CFM	% to design
SGRD1	RETAIL	LD1	10"	315	1	433	314	303	96.2
SGRD2	RETAIL	LD1	10"	300	1	324	299	285	95.0
SGRD3	RETAIL	LD1	10"	300	1	354	299	274	91.3
SGRD4	RETAIL	LD1	10"	300	1	303	274	283	94.3
SGRD5	ASSOCIATES	CD1	6"	150	1	118	119	124	82.7
SGRD6	OFFICE	CD1	6"	150	1	97	92	102	68.0
SGRD7	RETAIL	LD1	10"	300	1	277	276	323	107.7
SGRD8	RETAIL	LD1	10"	315	1	329	330	340	107.9
SGRD9	RETAIL	LD1	10"	290	1	240	251	271	93.4
SGRD10	DELIVERY VESTIBULE	CD1	8"	200	1	164	173	188	94.0
SGRD11	RETAIL	LD1	10"	290	1	279	282	312	107.6
SGRD12	RETAIL	LD1	10"	290	1	348	291	317	109.3
SGRD13	MENS RESTROOM	CD3	6"	50	1	99	53	46	92.0
SGRD14	WOMENS RESTROOM	CD3	6"	50	1	75	53	53	106.0
SGRD15	REAR VESTIBULE	CD3	6"	100	1	118	131	95	95.0
Total				3400		3558	3237	3316	97.53%



National TAB

Project: 10-28-24 WAWA #5412 PLANTATION, FL

System/Unit: AHU/RTU



Asset: RTU2

AREA:FOOD SERVICE

Unit Data		
	Design	Actual
MFG	LENNOX	LENNOX
Serial Num	-	5623K05305
Model Num	LCT120H4E	LCT120H4EN1Y
Type	RTU	RTU
Configuration	VERTICAL	VERTICAL
Num OA Filters 1	-	1
OA Filter Size 1	-	23x14
Num Final Filter 1	-	4
Final Filter Size 1	-	20x25x2

Motor Data		
	Design	Actual
Motor MFG	-	EBMPAPST
Frame	-	NL
Horsepower	3.75	3.8
Motor Rpm	-	2200
Phase	3	3
Rated Voltage	208	200-240
Rated Amperage	-	8.7
Service Factor	-	NL

Drive Data	
	Actual
Motor Sheave Size	DD
Motor Bore Size	DD
Motor Sheave SetPt	DD
Fan Sheave Size	DD
Fan Sheave Bore	DD
Belt CL Distance	DD
Num of Belts	DD
Belt Size	DD

Test Data		
	Design	Actual
SF CFM	4000	4034
SF RPM	-	1584
MOTOR RPM	-	1584
RA CFM	3350	
OA CFM	650	
RL Voltage	-	211/212/214
RL Amperage	-	3.6/3.6/3.6
SF System SetPt	-	72%
OA Damper Position	-	50%
OA Damper Type	-	SINGLE BLADE

Performance Data		
	Design	Actual
MA Plenum SP	-	
Fan Suction SP	-	
Fan Discharge SP	-	
Total ESP	0.5"	
Fan Total SP	-	



National TAB

Project:10-28-24 WAWA #5412 PLANTATION, FL

AHU/RTU



Diffuser Supply (GRD)

RTU2/FOOD SERVICE

Asset									
Asset Name	Location	Type	Size	DESIGN CFM	AK	CFM(1)	CFM(2)	FINAL CFM	% to design
SGRD1	FOOD SERVICE	LD1	10"	300	1	444	335	296	98.7
SGRD2	FOOD SERVICE	LD1	10"	300	1	352	290	296	98.7
SGRD3	FOOD SERVICE	LD1	10"	300	1	232	247	318	106.0
SGRD4	FOOD SERVICE	LD1	10"	300	1	412	381	288	96.0
SGRD5	FOOD SERVICE #2	LD1	12"	500	1	661	495	510	102.0
SGRD6	FOOD SERVICE #2	LD1	12"	500	1	344	426	512	102.4
SGRD7	FOOD SERVICE #2	LD1	12"	500	1	593	531	523	104.6
SGRD8	FOOD SERVICE #2	LD1	12"	500	1	468	539	512	102.4
SGRD9	DRY STORAGE	LD1	8"	250	1	257	266	256	102.4
SGRD10	ELECTRICAL	CD1	12"	550	1	455	530	523	95.1
Total				4000		4218	4040	4034	100.85%

Diffuser Ret/Exh (GRD)

RTU2/FOOD SERVICE

Asset									
Asset Name	Location	Type	Size	DESIGN CFM	AK	CFM(1)	CFM(2)	FINAL CFM	% to design
EGRD1	RETAIL	G1	14"	800					-
EGRD2	FOOD SERVICE	G1	12"	585					-
EGRD3	FOOD SERVICE	G1	12"	585					-
EGRD4	FOOD SERVICE	G1	12"	580					-
EGRD5	FOOD SERVICE	G1	14"	800					-
Total				3350		0	0	0	0%



National TAB

Project: 10-28-24 WAWA #5412 PLANTATION, FL

System/Unit: AHU/RTU



Asset: RTU3

AREA:RETAIL

Unit Data		
	Design	Actual
MFG	LENNOX	LENNOX
Serial Num	-	5623F06019
Model Num	LCT092H4E	LCT092H4EC1Y
Type	RTU	RTU
Configuration	VERTICAL	VERTICAL
Num OA Filters 1	-	1
OA Filter Size 1	-	23x14
Num Final Filter 1	-	4
Final Filter Size 1	-	20x25x2

Motor Data		
	Design	Actual
Motor MFG	-	EBMPAPST
Frame	-	NL
Horsepower	3.75	3.8
Motor Rpm	-	2200
Phase	3	3
Rated Voltage	208	200-240
Rated Amperage	-	8.7
Service Factor	-	NL

Drive Data	
	Actual
Motor Sheave Size	DD
Motor Bore Size	DD
Motor Sheave SetPt	DD
Fan Sheave Size	DD
Fan Sheave Bore	DD
Belt CL Distance	DD
Num of Belts	DD
Belt Size	DD

Test Data		
	Design	Actual
SF CFM	3000	
SF RPM	-	1254
MOTOR RPM	-	1254
RA CFM	2600	
OA CFM	400	
RL Voltage	-	211/212/214
RL Amperage	-	2.3/2.2/2.0
SF System SetPt	-	57%
OA Damper Position	-	34%
OA Damper Type	-	SINGLE BLADE

Performance Data		
	Design	Actual
MA Plenum SP	-	
Fan Suction SP	-	
Fan Discharge SP	-	
Total ESP	0.5"	
Fan Total SP	-	



National TAB

Project:10-28-24 WAWA #5412 PLANTATION, FL

AHU/RTU



Diffuser Supply (GRD)

RTU3/RETAIL

Asset									
Asset Name	Location	Type	Size	DESIGN CFM	AK	CFM(1)	CFM(2)	FINAL CFM	% to design
SGRD1	FRONT VESTIBULE	CD2	12"	590	1	716	591		-
SGRD2	RETAIL	LD1	10"	300	1	385	328		-
SGRD3	RETAIL	LD1	10"	300	1	377	319		-
SGRD4	COFFEE/SPECIALTY BEV.	LD1	10"	325	1	388	327		-
SGRD5	COFFEE/SPECIALTY BEV.	LD1	10"	325	1	406	340		-
SGRD6	COFFEE/SPECIALTY BEV.	LD1	10"	325	1	397	325		-
SGRD7	COFFEE/SPECIALTY BEV.	LD1	10"	325	1	267	222		-
SGRD8	WASHROOM	LD1	8"	230	1	307	249		-
SGRD9	WASHROOM	LD1	8"	230	1	266	188		-
SGRD10	TRASH ROOM	CD1	6"	50	1	178			-
Total				3000		3687	2889	0	0%



National TAB

Project: 10-28-24 WAWA #5412 PLANTATION, FL

System/Unit: FAN - Exhaust



Asset: EF1

AREA:FOOD SERVICE/ RESTROOM

Unit Data		
	Design	Actual
MFG	LOREN COOK	LOREN COOK
Model Num	ACED-120C15D	120C15D
Serial Num	-	089SL22441
Type	DOWNBLAST	DOWNBLAST
Configuration	VERTICAL	VERTICAL

Motor Data		
	Design	Actual
Motor MFG	-	QUEACE
Frame	-	NL
Horsepower	1/4	1/4
Motor Rpm	-	1550/1300
Phase	1	1
Voltage (rated)	120	115
Amperage (rated)	-	3.3
Service Factor	-	NL

Test Data		
	Design	Actual
CFM	1100	955
Fan RPM	1550	1550
Fan Rotation	-	CCW
Motor RPM	-	1550
System SetPt	-	MAX
RL Voltage	-	120
RL Amperage	-	3.2
Total ESP	0.375"	
Fan Inlet SP	-	
Fan Discharge SP	-	ATM



National TAB

Project:10-28-24 WAWA #5412 PLANTATION, FL

FAN - Exhaust



Diffuser Ret/Exh (GRD)

EF1/FOOD SERVICE/ RESTROOM

Asset									
Asset Name	Location	Type	Size	DESIGN CFM	AK	CFM(1)	CFM(2)	FINAL CFM	% to design
EGRD1	FOOD SERVICE	G1		500	1	168	308	308	61.6
EGRD2	FOOD SERVICE	G1		300	1	188	350	350	116.7
EGRD3	TRASH ROOM	G1	6"	100	1	61	132	132	132.0
EGRD4	MENS RESTROOM	G3	6"	100	1	47	92	92	92.0
EGRD5	WOMENS RESTROOM	G3	6"	100	1	26	73	73	73.0
Total				1100		490	955	955	86.82%



National TAB

Project: 10-28-24 WAWA #5412 PLANTATION, FL

System/Unit: FAN - Exhaust



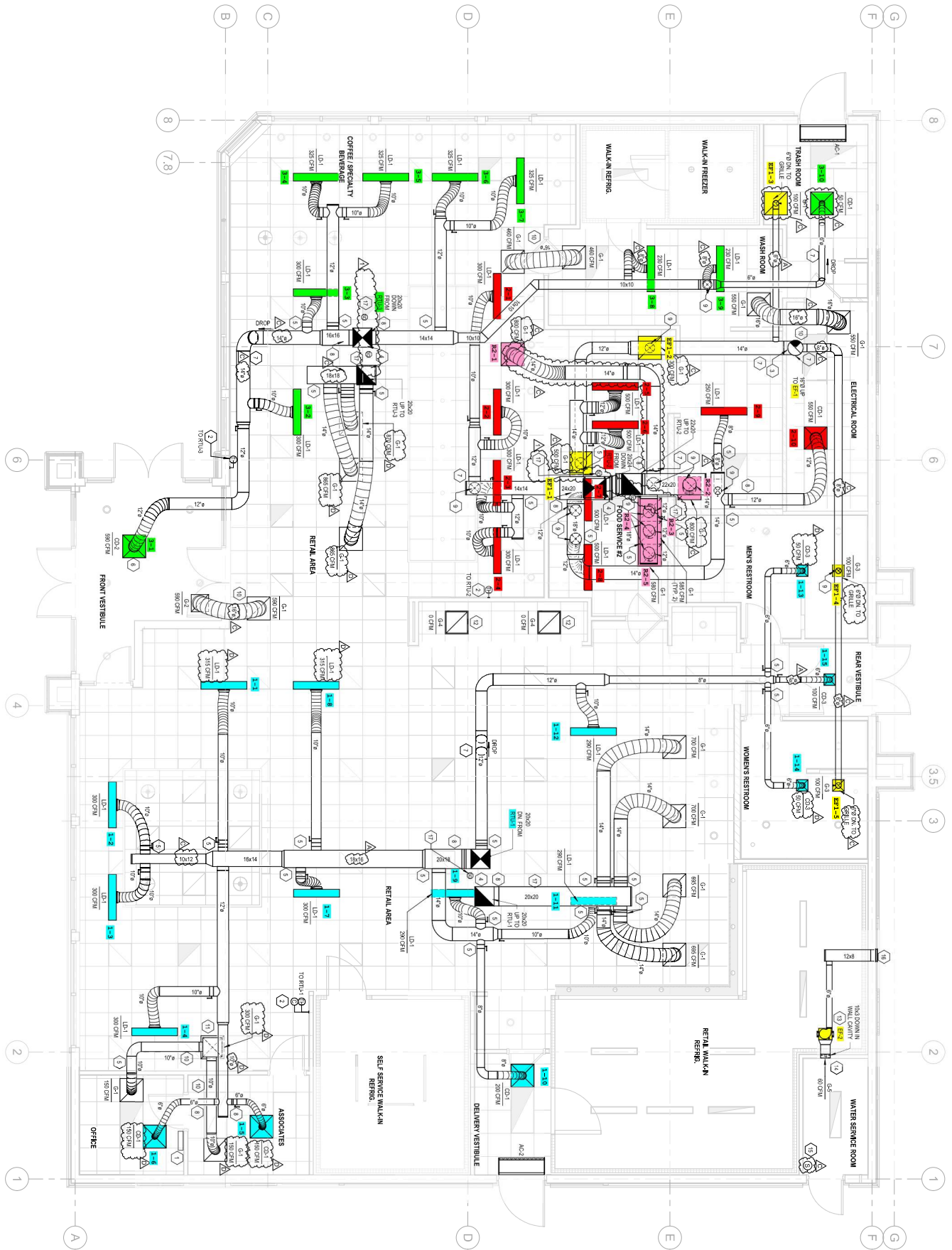
Asset: EF2

AREA:

Unit Data		
	Design	Actual
MFG	LOREN COOK	LOREN COOK
Model Num	GN-148	GEMINI 140 SERIES
Serial Num	-	NL
Type	INLINE	INLINE
Configuration	HORIZONTAL	HORIZONTAL

Test Data		
	Design	Actual
CFM	60	0
Fan RPM	685	
Fan Rotation	-	
Motor RPM	-	
System SetPt	-	
RL Voltage	-	
RL Amperage	-	

Motor Data		
	Design	Actual
Motor MFG	-	QUEACE
Frame	-	NL
Horsepower	28W	15W
Motor Rpm	-	1550
Phase	1	1
Voltage (rated)	120	115
Amperage (rated)	-	0.40/0.22
Service Factor	-	NL



1 HVAC FLOOR PLAN
 11/18/24 11/18/24