

# BLUE SUSHI 6/16

---

Thursday, June 16, 2022

23 Remarks Identified



**FOUND LOOSE GREASE DOOR WAS NOT FIXED**  
NTAB corrected this



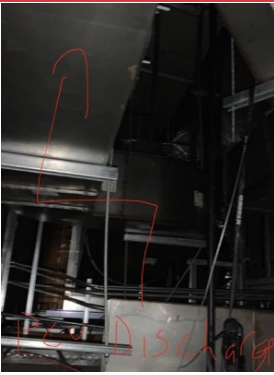
**FAN BELT HAS COME OFF**



**DIFFUSER FLEX STILL CRUSHED UNDER THE PCU**



**ADDED TURNS TO THE GREASE DUCT**



**GREASE DUCT WAS DESIGNED TO HAVE 2 45 DEGREE ELBOWS**



**PCU- INNER FAN SHEAVE HAS COME LOOSE**

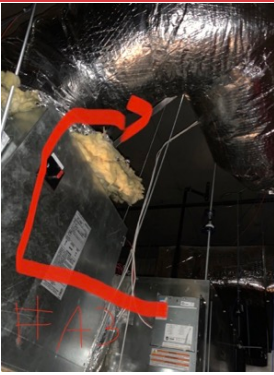
NTAB tried to remove the key to put the sheave back on but the key was stuck in. Recommend replacing the Motor sheave



**PCU HAS TWO SETS OF CARBON FILTERS**



**FIRST BANK OF CARBON FILTER CLEANLINESS**



### **AHU-3**

Unit has a lot of supply leakage coming from the heater section. Access the the OA damper and water valve is not possible do to counter being underneath the access doors



### **AHU-4 LEAKAGE AT THE DISCHARGE DUCT**



### **AHU4 LEAKAGE IS AT THE CANVAS CONNECTOR SEAM**



### **AHU-4 RETURN DUCT DOES NOT CONNECT SQUARELY TO THE RETURN PLENUM**

This installation is reducing free flow area of the duct and could cause lower flow when unit is pulling full return



**AHU-4 FILTERS ARE DIRTY**



**AHU-2 FILTERS ARE EXTREMELY DIRTY**



**TYPICAL AHU OA AND RETURN DAMPER**

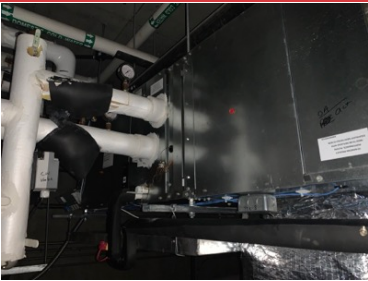
If there is a mechanical stopper on the damper it is not accessible due to being butted up against the outside of the unit



**AHU-1 OA DAMPER STOPPED BY SELF TAPPING SCREWS**



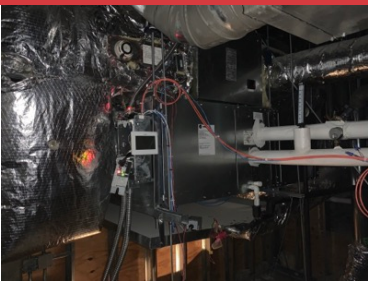
**AHU-1 FILTERS**



**AHU-1**



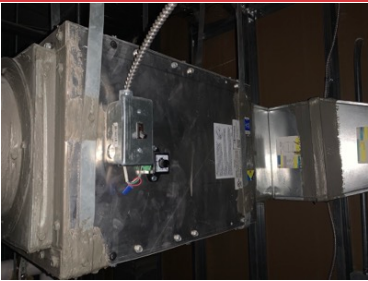
**AHU-2**



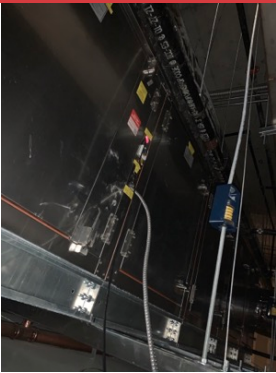
**AHU-4**



**EF-1**



**EF-2**



**PCU**