

BLUE SUSHI, NASHVILLE TN

Sunday, June 5, 2022

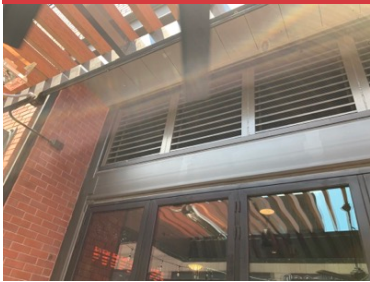
31 Remarks Identified



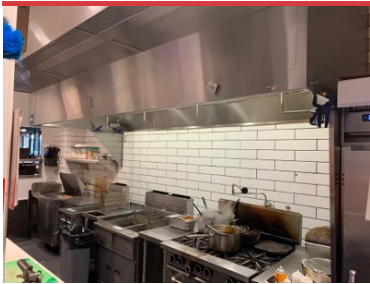
STOREFRONT



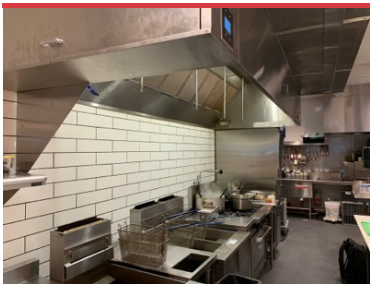
OA INTAKE



EXHAUST FOR DISH AND PCU



HD-1 RIGHT VIEW



HD-2 LEFT VIEW



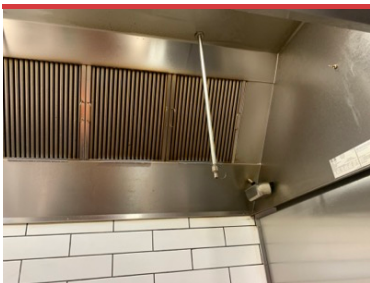
RIGHT END PANEL IS CLAMPED ON



CAPRATE FILTERS IN PCU NOT TOO HEAVILY LOADED

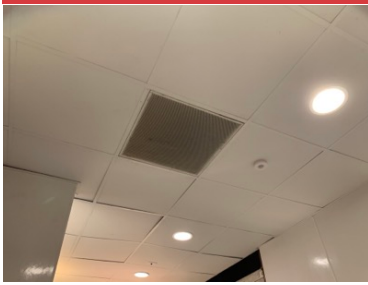


1ST SET OF DISPOSABLE FILTERS



FILTERS ON RIGHT SIDE OF THE HOOD

Are loaded heavier and have lower FPM



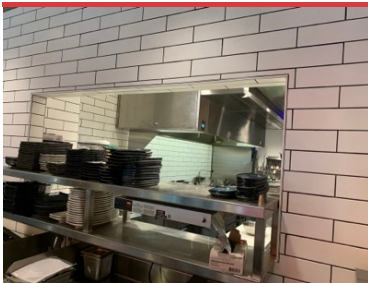
AHU-2 RETURN GRILLE HAS GRIME BUILDUP



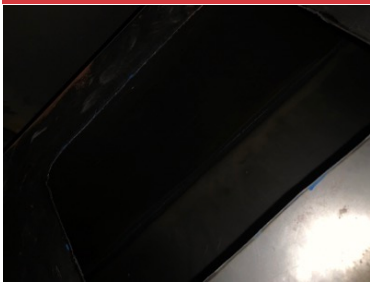
DIFFUSER IN PREP AREA



FLEX IS SMASHED DO TO PCU DRIP PAN



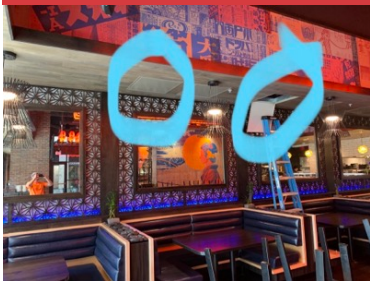
**DINING TO COOKLINE PASS THROUGH WINDOW
70-80 FPM VELOCITY AVG**



MISSING CLEANOUT DOOR



SECOND DOOR PICTURED LOOKS LOOSE



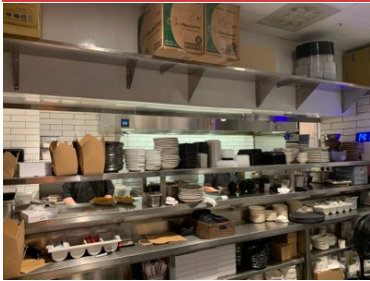
ACCESS PANELS FOR ASSOCIATED GREASE CLEANOUT PANELS



DISH HOOD



DOOR THAT OPEN UP THE DINING ROOM



PASS THROUGH WINDOW IN FRONT OF THE HOOD

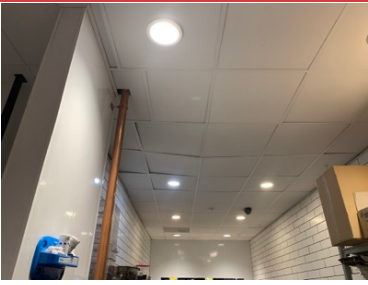


BOH HOOD-1 ON LEFT AND DISH HOOD ON RIGHT



CEILING NOT SEALED TO WALK-IN COOLER.

Did not observe any airflow going through



CEILING OVER PREP LINE IS SAGGING



DUCTWORK IN DINING IS 20' ISH OF THE GROUND



ICE MACHINE ROOM



STAIRWAY UP



STAIRWAY UP



STORAGE UPSTAIRS



UPSTAIRS OFFICE



EXAMPLE OF BALANCE VALVE

