

MECHANICAL PLAN NOTES:

- 1 TYPE I HOODS SHALL BE FURNISHED COMPLETE WITH INTERNALLY PIPED FIRE SUPPRESSION SYSTEM AND EXTERNAL FOAM SUPPLY BOTTLES WITH REMOTE PULL CONTROLS AND IN COMPLIANCE WITH NFPA 96. DIVISION 23 SHALL COORDINATE COMPLETE INSTALLATION WITH FIRE PROTECTION CONTRACTOR TO MEET APPROVAL OF LOCAL INSPECTOR AND CODE COMPLIANCE INCLUDING TESTING.
- 2 MOUNT THERMOSTATS AND TEMPERATURE SENSOR(S) ON WALL. THERMOSTATS AND SENSOR(S) SHALL BE LABELED TO MATCH THE UNIT TAG AND CORRESPOND TO THE ELECTRICAL LEGEND IN THE ELECTRICAL PANELBOARD SERVING THE EQUIPMENT. COORDINATE COLOR WITH ARCHITECT.
- 3 PROVIDE SA DUCT THROUGH ROOF. FULL SIZE OF UNIT OPENING, AND CONNECT TO UNIT WITH FLEXIBLE CONNECTOR.
- 4 INSTALL DUCT SMOKE DETECTOR IN RETURN AIR PLENUM.
- 5 PROVIDE RA DUCT THROUGH ROOF. FULL SIZE OF UNIT OPENING, AND CONNECT TO UNIT WITH FLEXIBLE CONNECTOR.
- 6 COMBINATION TEMPERATURE SENSOR AND HUMIDITY SENSOR. REFERENCE SPECIFICATIONS FOR REQUIREMENTS.
- 7 MOUNT TEMPERATURE SENSOR PROVIDED WITH KITCHEN EXHAUST HOODS ON WALL.
- 8 INSTALL HOOD FIRE SUPPRESSION MANUAL PULL STATION. COORDINATE EXACT LOCATION AND REQUIREMENTS WITH FIRE SUPPRESSION SYSTEM INSTALLER AND THE AUTHORITY HAVING JURISDICTION.
- 9 PROVIDE ANALOX AX60 OR APPROVED EQUAL CARBON DIOXIDE SENSOR WITH REMOTE ALARM REPEATER TO BE MOUNTED AT 18" AFF. PROVIDE CARBON DIOXIDE SENSOR WITH RELAY. RELAY SHALL BE INTERLOCKED WITH THE BUILDING FIRE ALARM SYSTEM. THE SENSOR SHALL BE EQUIPPED WITH A LOCAL AUDIBLE AND VISUAL ALARM. THE LOW LEVEL ALARM SHALL ACTIVATE THE LOCAL AUDIBLE AND VISUAL ALARM. THE HIGH LEVEL ALARM SHALL ACTIVATE RELAY. INSTALL SENSOR PER MANUFACTURER'S INSTALLATION INSTRUCTIONS.
- 10 CARBON MONOXIDE DETECTOR FURNISHED BY OWNER. INSTALL AT 8'-0" AFF. COORDINATE FINAL LOCATION WITH OWNER REPRESENTATIVE.
- 11 PROVIDE COMBUSTION AIR AND EXHAUST PIPE AND ROUTE TO CONCENTRIC VENT THROUGH ROOF.

Seal

THIS DOCUMENT IS RELEASED FOR THE PURPOSE OF PRELIMINARY SUBMITTAL. MARCUS E. SANCHEZ LICENSE # 42439. IT IS NOT TO BE USED FOR CONSTRUCTION PURPOSES.

DP3
ARCHITECTS

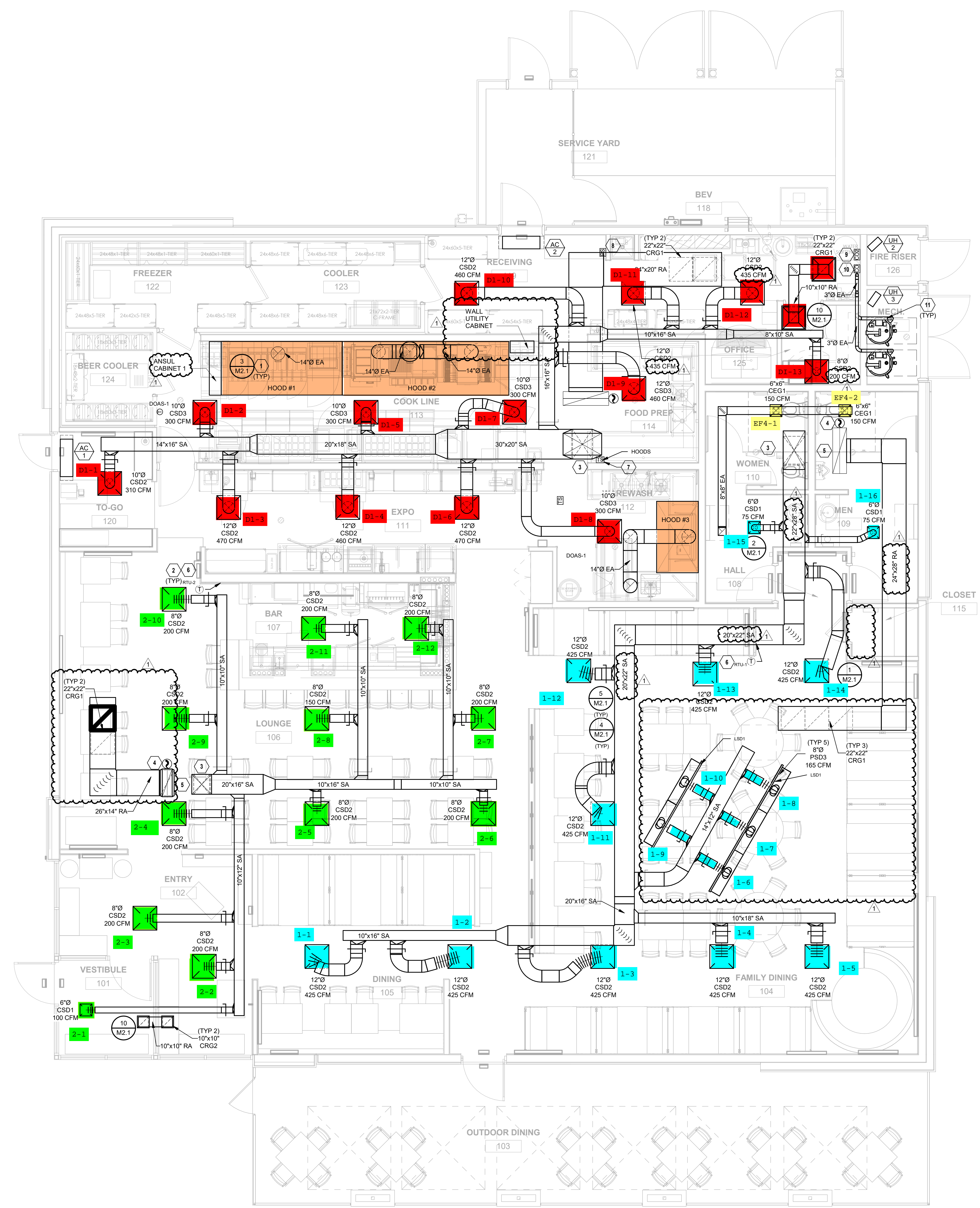
DP3 Architects, Ltd.
15 South Main Street, Suite 400
Greenville, SC 29601
864.232.6200
www.DP3architects.com

Project

RED ROBIN
GLENDALE, AZ

Project Number 21402
Drawn By AJP
Checked By JH
Date 21 FEB 2022

Revisions
1 18 MAR 22 Revision 1



MECHANICAL FLOOR PLAN
1/4" = 1'-0"

Drawing

MECHANICAL
FLOOR PLAN

M1.1

Copyright: These Drawings are the property of DP3 Architects, Ltd., and reuse on any other project without written permission will result in legal action.

MARCUS E. SANCHEZ

Copyright: These Drawings are the property of DP3 Architects, Ltd., and reuse on any other project without written permission will result in legal action.

1/2" DIA. ALL-THREAD ROD CONNECTED TO ROOF JOIST THROUGH ANOTHER HANGING ANGLE

1/2" DIA. HEAVY DUTY NUT ONE ABOVE AND ONE BELOW HANGING ANGLE

HANGING ANGLE DETAILS

| HOOD STYLE / MODEL | 450 DEGREES cfm/ft. | 600 DEGREES cfm/ft. | 700 DEGREES cfm/ft. |
|---------------------------------|---------------------|---------------------|---------------------|
| CANOPY ND2 | 150 | 200 | 250 |
| WITH END PANELS (USE PRECISION) | 127.5 | 170 | 212.5 |
| SLOPED ND-2 | 228 | 294 | - |
| ISLAND ND-2WI | 269 | 300 | 350 |
| NDI | 346 | 422 | 475 |

ETL HOOD LISTING DETAILS

EXHAUST CFM=LENGTH OF HOOD X CFM/LIN.FT. (LOAD)
 SUPPLY CFM=EXHAUST CFM X REVERSIBLE REQUIRED CFM
 TOTAL DUCT AREA=144 X (FPM)²
 DUCT LENGTH= TOTAL DUCT AREA / DUCT DUCT AREA

CALCULATIONS UTILIZED

CAPTIVE-AIRE HOODS ARE BUILT IN COMPLIANCE WITH:

BUILDING CODES

CAPTIVE-AIRE HOODS HAVE OPTIONAL CLEARANCE REDUCTION SYSTEMS AVAILABLE AS FOLLOWS:

| MATERIAL | CLEARANCE REDUCTION SYSTEM |
|---------------------|----------------------------|
| NON-COMBUSTIBLE | NONE REQUIRED |
| LIMITED-COMBUSTIBLE | 3" UNINSULATED STANDOFF |
| COMBUSTIBLE | 1" INSULATED STANDOFF |

CLEARANCE TO COMBUSTIBLES

INSTALLATION

- ALL ELECTRICAL "TIE-UP" CONNECTIONS AND RELATED INTERCONNECTIONS BY ELECTRICAL CONTRACTORS.
- ALL PLUMBING "TIE-UP" CONNECTIONS AND RELATED INTERCONNECTIONS BY PLUMBING CONTRACTORS.
- HANGING BRACKETS LOCATED AND WELDED AS SHOWN ON PLANS. ALL OTHER HANGING MATERIALS PROVIDED BY INSTALLING CONTRACTORS.
- ALL CONNECTIONS FROM CAPTIVE-AIRE DUCT FOR MECHANICAL CONTRACTORS' PLANS.
- COOKING EQUIPMENT TO SHUT-OFF IN EVENT OF FIRE.
- EXHAUST FANS TO TURN ON IN EVENT OF FIRE.
- ALL LIGHTS FUTURE SHOWN INSTALLED BY CAPTIVE-AIRE ARE FACTORY PREWIRED AND CONNECTED BETWEEN HOODS AND TO SWITCHES BY ELECTRICAL CONTRACTORS.
- LAMPS FOR LIGHT FIXTURES BY INSTALLING CONTRACTORS.
- SEISMIC RESTRAINTS ARE RESPONSIBILITY OF INSTALLING CONTRACTORS.
- INSTALLING CONTRACTORS ASSUME ALL RELATED RESPONSIBILITY FOR VERIFICATION OF SEISMIC DATA CONTAINED ON THESE DOCUMENTS FOR ACCURACY, INTEGRITY, AND COMPLIANCE WITH CODE REQUIREMENTS IN EFFECT PRIOR TO ANY RELEASE FOR PRODUCTION OF EQUIPMENT SHOWN.

GENERAL NOTES

11. KITCHEN HOODS MUST BE BALANCED WITH KITCHEN.

12. KITCHEN SHALL BE NEGATIVE WITH RESPECT TO AMBIENT PRESSURE.

13. RESTAURANT SHALL BE POSITIVE WITH RESPECT TO AMBIENT PRESSURE.

ADDITIONAL

14. WRITTEN HOOD DIMENSIONS HAVE PRECEDENCE OVER SCALE.

15. SIGNED AND "APPROVED" COPIES OF THIS DOCUMENT SHALL BE SUBMITTED TO FACTORY PRIOR TO PRODUCTION.

VERTICAL THROW DATA (FPM)

| CFM | 1750 | 1500 | 1250 |
|-----|-------|-------|-------|
| 600 | 1.50" | 3.00" | 3.75" |
| 500 | 0.50" | 2.50" | 3.25" |
| 400 | --- | 1.50" | 2.50" |
| 300 | --- | --- | 3.75" |
| 200 | --- | --- | 0.50" |

INSTALLATION NOTES:
 INTENDED FOR INSTALLATION IN LAY IN (DROP) CEILING.
 INSTALL SLIDING RADIAL DAMPER ON TOP SIDE OF COLLAR.

NOTE 1: ALL WALLS AND STRUCTURES THAT COME WITHIN 18" OF HOOD MUST BE METAL STUDS AND SHEETROCK, WOOD STUDS OR ANY OTHER COMBUSTIBLE MATERIAL WITHIN 18" OF HOOD NOT ALLOWED.

NOTE 2: HOOD MANUFACTURER RECOMMENDS NO RETURNS WITHIN 10 FEET OF HOOD IN ALL DIRECTIONS.

NOTE 3: MAKE-UP AIR SHALL BE DELIVERED INTO SPACE IN MANNER THAT WILL NOT DISRUPT HOODS ABILITY TO CAPTURE AND CONTAIN.

Filter Detail: CaptiveAire Captrate Solo Filter ETL Listed Grease Extracting Filter Made From 430 Stainless Steel

FOR QUESTIONS, CALL THE Denver Office
 REGION 42
 PHONE: (720) 570-0981
 EMAIL: reg42@captiveaire.com

HOOD INFORMATION - JOB#5293112

| HOOD NO | TAG | MODEL | MANUFACTURER | LENGTH | MAX COOKING TEMP | TYPE | APPLIANCE DUTY | DESIGN CFM/FT | TOTAL EXH. CFM | EXHAUST PLENUM RISER(S) | | | | HOOD CONSTRUCTION | HOOD CONFIG | | |
|---------|------|------------|--------------|--------|------------------|------|----------------|---------------|----------------|-------------------------|------|--------|------|-------------------|----------------------|-------|-------|
| | | | | | | | | | | WIDTH | LENG | HEIGHT | DIA | | CFM | VEL | SP |
| 1 | H-1L | 5430 ND-2 | CAPTIVEAIRE | 9' 2" | 600 DEG | I | HEAVY | 225 | 2063 | 4' | 14" | 2063 | 1930 | -0.875' | 430 SS WHERE EXPOSED | LEFT | FRONT |
| 2 | H-2R | 5430 ND-2 | CAPTIVEAIRE | 14' 0" | 600 DEG | I | HEAVY | 250 | 3500 | 4' | 14" | 1750 | 1637 | -0.732' | 430 SS WHERE EXPOSED | RIGHT | FRONT |
| 3 | H-3 | 4224 VHB-G | CAPTIVEAIRE | 6' 0" | 700 DEG | II | N/A | 150 | 900 | 4' | 14" | 900 | 842 | -0.079' | 304 SS 100% | ALONE | ALONE |

HOOD INFORMATION

| HOOD NO | TAG | TYPE | FILTER(S) | | | LIGHT(S) | | | UTILITY CABINET(S) | | | FIRE SYSTEM | HOOD SYSTEM | HANGING PIPING WEIGHT | | | |
|---------|------|----------------------|-----------|--------|--------|------------------------|-----|----------------|--------------------|----------|-------------|-------------|-------------|-----------------------|------------------|------|---------|
| | | | QTY | HEIGHT | LENGTH | EFFICIENCY @ 7 MICRONS | QTY | TYPE | WIRE GUARD | LOCATION | SIZE | | | | TYPE | SIZE | MODEL # |
| 1 | H-1L | CAPTRATE SOLD FILTER | 6 | 20" | 16" | 85% SEE FILTER SPEC | 5 | L55 SERIES E26 | NO | LEFT | 12"x54"x30" | TANK FS | 4.0/4.0 | M-DCV-E201011 | 1 LIGHT 1 FAN | YES | 909 LBS |
| 2 | H-2R | CAPTRATE SOLD FILTER | 10 | 20" | 16" | 85% SEE FILTER SPEC | 7 | L55 SERIES E26 | NO | WALL MNT | 12"x24"x24" | | | | | YES | 845 LBS |
| 3 | H-3 | | 2 | | | | 2 | L55 SERIES E26 | NO | | | | | | | NO | 214 LBS |

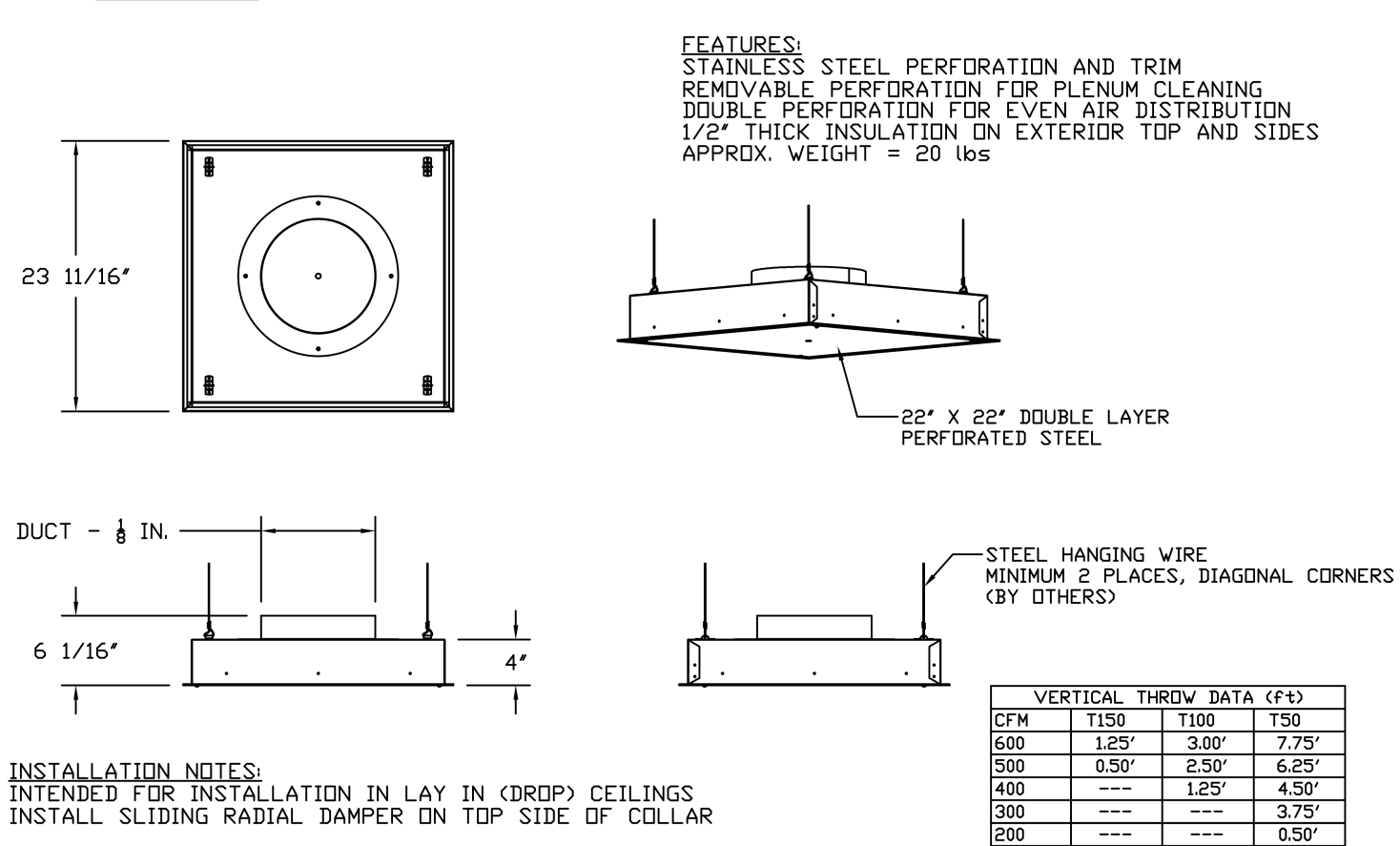
HOOD OPTIONS

| HOOD NO | TAG | FIELD | WRAPPER | 12.00' HIGH | FRONT, LEFT | OPTION |
|---------|------|-------------------------|--|---------------------|-----------------------------|-------------------------|
| 1 | H-1L | LEFT QUARTER END PANEL | 23' TOP WIDTH, 0' BOTTOM WIDTH, 23' HIGH | 430 SS. | INSULATION FOR TOP OF HOOD. | STRUCTURAL FRONT PANEL. |
| 2 | H-2R | RIGHT QUARTER END PANEL | 23' TOP WIDTH, 0' BOTTOM WIDTH, 23' HIGH | 430 SS. | INSULATION FOR TOP OF HOOD. | STRUCTURAL FRONT PANEL. |
| 3 | H-3 | FIELD WRAPPER | 18.00' HIGH | FRONT, LEFT, RIGHT. | | |

WALL-MOUNT UTILITY CABINET

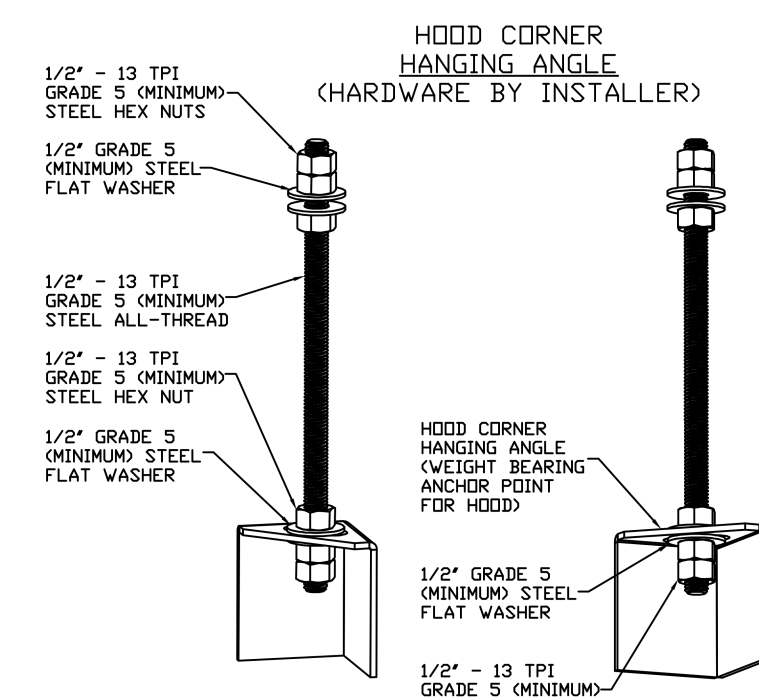
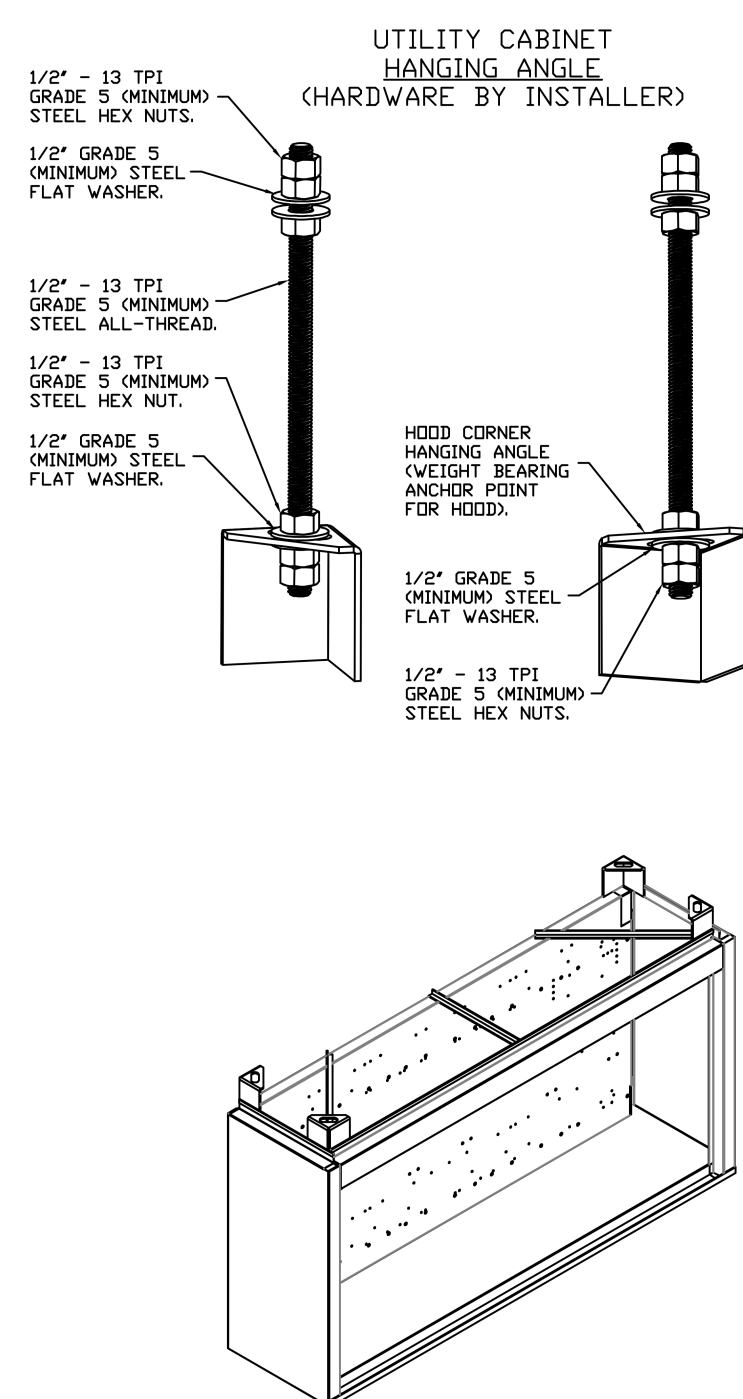
| HOOD NO | LOCATION | SIZE | UTILITY CABINET(S) | | | WEIGHT |
|---------|----------|-------------|--------------------|------------|----------|---------|
| | | | FIRE SYSTEM | ELECTRICAL | SWITCHES | |
| 2 | WALL MNT | 12"x24"x24" | | | | 100 LBS |

QTY 16-DROP-IN PERFORATED SUPPLY PLENUM DIFFUSER (DI-PSP)



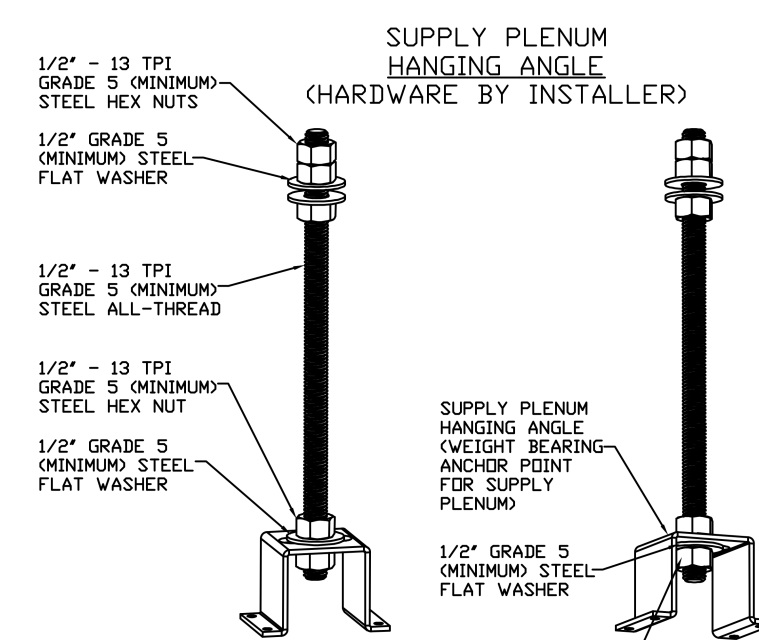
WALL-MOUNT UTILITY CABINET ASSEMBLY INSTRUCTIONS

HANGING ANGLE MUST BE SUPPORTED WITH 1/2" - 13 TPI GRADE 5 (MINIMUM) ALL-THREAD, SANDWICH HANGING ANGLES AND CEILING ANCHOR POINTS WITH 1/2" GRADE 5 (MINIMUM) STEEL FLAT WASHERS AND 1/2" - 13 TPI GRADE 5 (MINIMUM) HEX NUTS AS SHOWN. MUST USE DOUBLED HEX NUT CONFIGURATION BENEATH UTILITY CABINET HANGING ANGLES AND ABOVE CEILING ANCHORS. MAINTAIN 1/4" OF EXPOSED THREADS BENEATH BOTTOM HEX NUT. TORQUE ALL HEX NUTS TO 57 FT-LBS.



ASSEMBLY INSTRUCTIONS

HANGING ANGLE MUST BE SUPPORTED WITH 1/2" - 13 TPI GRADE 5 (MINIMUM) ALL-THREAD, SANDWICH HANGING ANGLES AND CEILING ANCHOR POINTS WITH 1/2" GRADE 5 (MINIMUM) STEEL FLAT WASHERS AND 1/2" - 13 TPI GRADE 5 (MINIMUM) HEX NUTS AS SHOWN. MUST USE DOUBLED HEX NUT CONFIGURATION BENEATH HOOD HANGING ANGLES AND ABOVE CEILING ANCHORS. MAINTAIN 1/4" OF EXPOSED THREADS BENEATH BOTTOM HEX NUT. TORQUE ALL HEX NUTS TO 57 FT-LBS.



ASSEMBLY INSTRUCTIONS

HANGING ANGLE MUST BE SUPPORTED WITH 1/2" - 13 TPI GRADE 5 (MINIMUM) ALL-THREAD, SANDWICH HANGING ANGLES AND CEILING ANCHOR POINTS WITH 1/2" GRADE 5 (MINIMUM) STEEL FLAT WASHERS AND 1/2" - 13 TPI GRADE 5 (MINIMUM) HEX NUTS AS SHOWN. MUST USE DOUBLED HEX NUT CONFIGURATION ABOVE CEILING ANCHORS. SINGLE HEX NUT BENEATH HANGING ANGLE IS ACCEPTABLE FOR PSP HANGING ANGLES. MAINTAIN 1/4" OF EXPOSED THREADS BENEATH BOTTOM HEX NUT. TORQUE ALL HEX NUTS TO 57 FT-LBS.

REVISIONS

| DESCRIPTION | DATE |
|-------------|------|
| | |
| | |
| | |
| | |
| | |

CAPTIVE AIRE

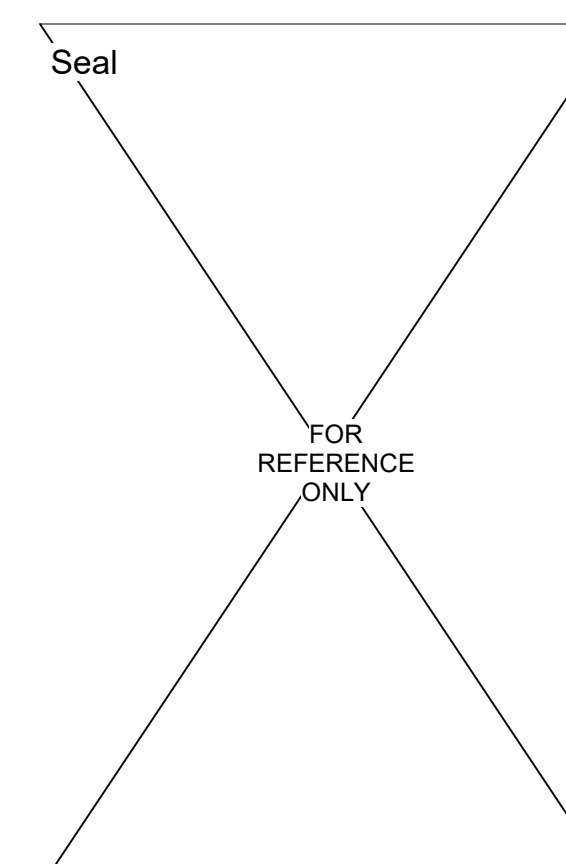
Denver Office
 www.captiveaire.com
 reg42@captiveaire.com

7200 S. Alton Way Building 5, Suite B, Centennial, CO 80112 PHONE: (720) 570-0981 FAX: (919) 227-5986 EMAIL: reg42@captiveaire.com

Red Robin - Glendale, AZ R2
 GLENDALE, AZ, 85301

DATE: 1/31/2022
DWG.#: 5293112
DRAWN BY: RJC - 42
SCALE: 3/4" = 1'-0"
MASTER DRAWING

SHEET NO.
 1



DP3 ARCHITECTS

DP3 Architects, Ltd.
 15 South Main Street, Suite 400
 Greenville, SC 29601
 864.232.6200
 www.DP3architects.com

Project

Red Robin - Glendale, AZ R2
 GLENDALE, AZ, 85301

RED ROBIN GLENDALE, AZ

Project Number 21402
 Drawn By AJP
 Checked By JH
 Date 21 FEB 2022

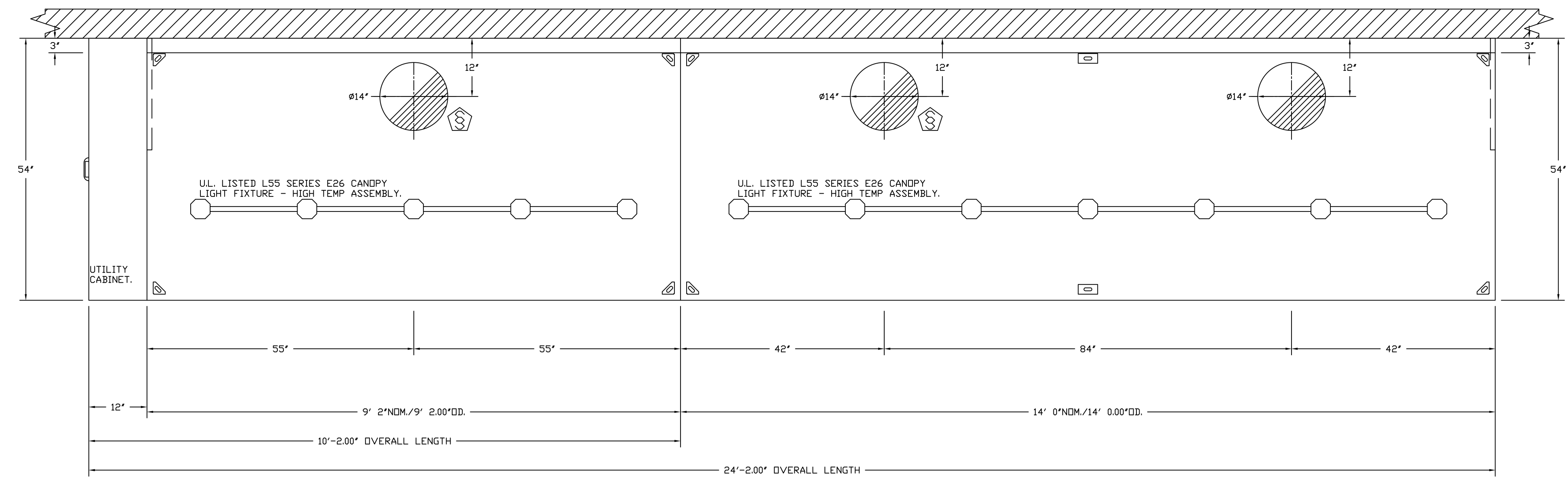
Revisions

NOTE:
 THE DOCUMENTATION CONTAINED ON THIS SHEET WAS NOT PREPARED BY HENDERSON ENGINEERS AND IS INCLUDED IN THIS SET FOR REFERENCE ONLY. HENDERSON ENGINEERS REVIEWED THE DOCUMENTATION ON THIS SHEET FOR GENERAL COMPLIANCE WITH DESIGN INTENT. SUPPLIER IS RESPONSIBLE THAT ALL FURNISHED EQUIPMENT ON THIS SHEET COMPLIES WITH APPLICABLE LOCAL, STATE, AND FEDERAL LAWS, CODES, AND REGULATIONS.

Drawing
CAPTIVE AIRE DRAWINGS

M6.0

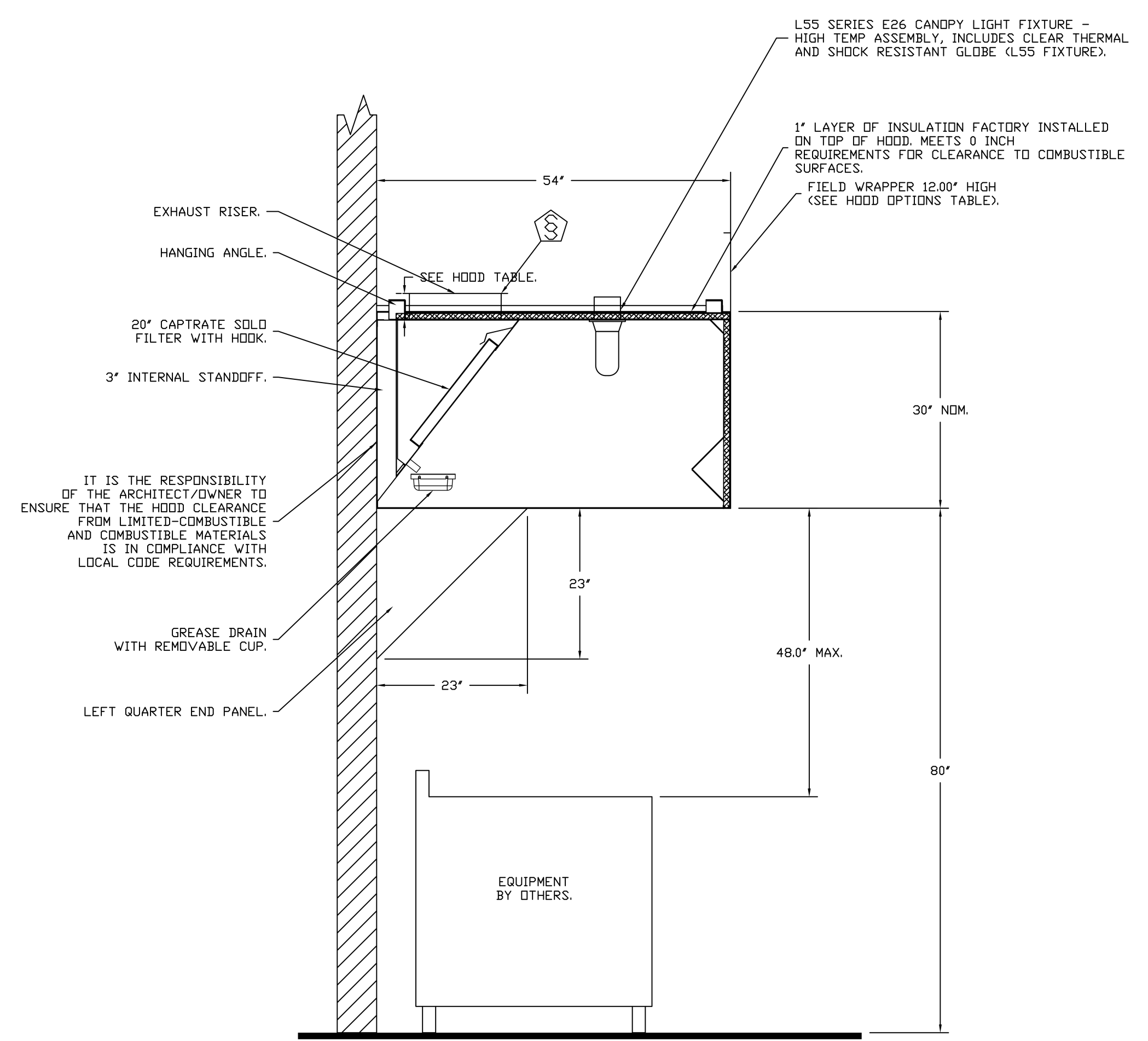
Copyright: These Drawings are the property of DP3 Architects, Ltd., and reuse on any other project without written permission will result in legal action.



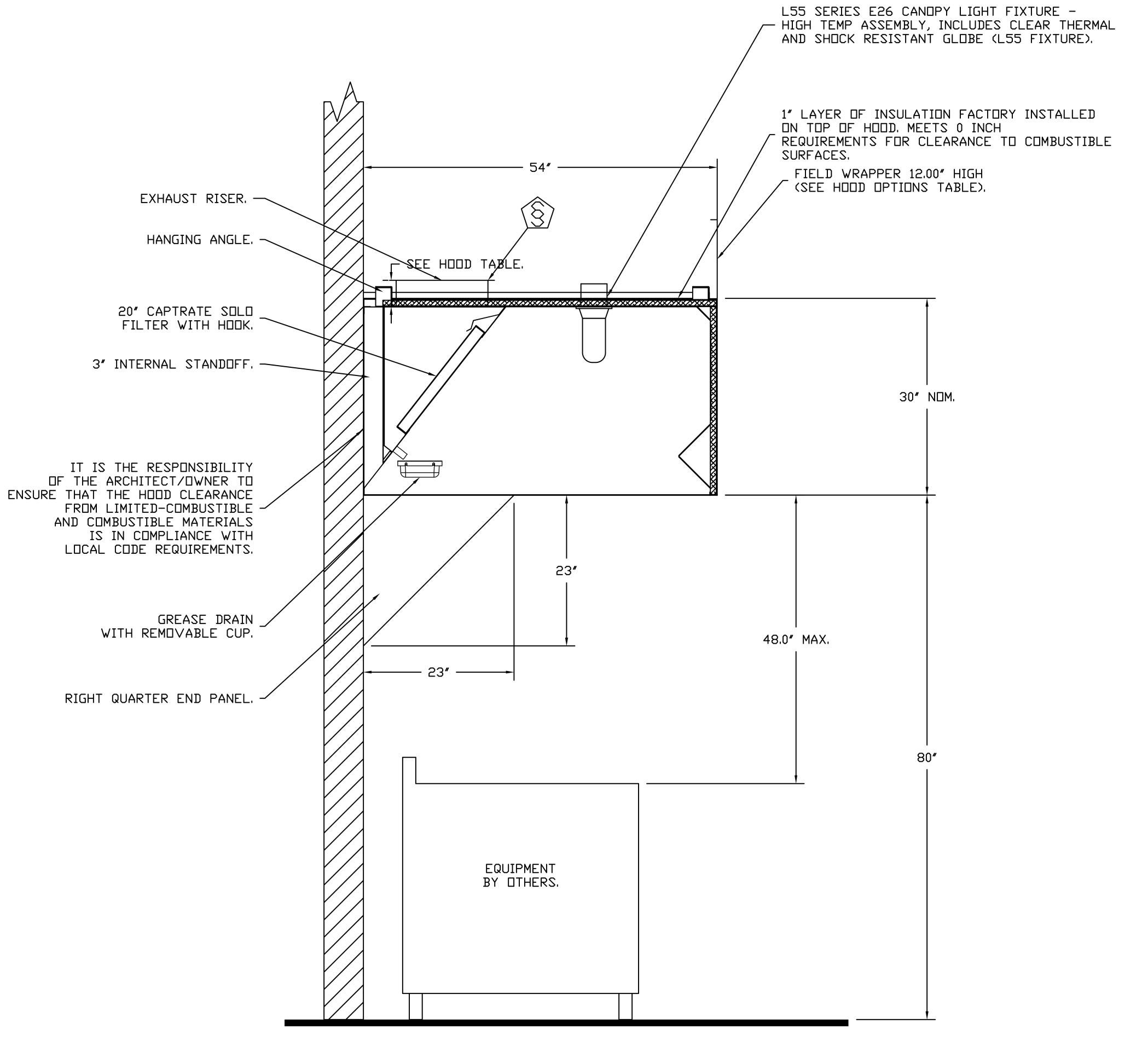
PLAN VIEW - HOOD #1 (H-1L)
 9'-2.00" LONG 5430ND-2

PLAN VIEW - HOOD #2 (H-2R)
 14'-0.00" LONG 5430ND-2

NOTE: ADDITIONAL HANGING ANGLES PROVIDED FOR HOODS 12" AND LONGER.



SECTION VIEW - MODEL 5430ND-2
 HOOD - #1 (H-1L)



SECTION VIEW - MODEL 5430ND-2
 HOOD - #2 (H-2R)

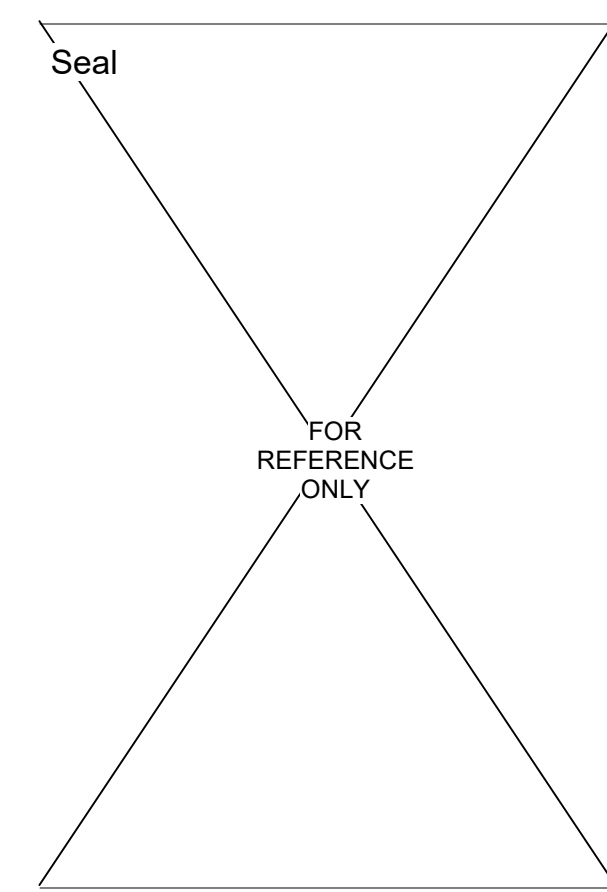
| REVISIONS | |
|-------------|------|
| DESCRIPTION | DATE |
| | |
| | |
| | |
| | |

CAPTIVE AIR
 Denver Office
 www.captiveair.com
 7300 S Alton Way Building 5, Suite B, Centennial, CO 80112 PHONE: (720) 570-0881 FAX: (919) 227-5999 EMAIL: regis2@captiveair.com

Red Robin - Glendale, AZ R2
 GLENDALE, AZ, 85301

DATE: 1/31/2022
 DWG.#: 5293112
 DRAWN BY: RJC - 42
 SCALE: 3/4" = 1'-0"
MASTER DRAWING

SHEET NO.
 2



DP3 ARCHITECTS
 DP3 Architects, Ltd.
 15 South Main Street, Suite 400
 Greenville, SC 29601
 864.232.6200
 www.DP3architects.com

Project

RED ROBIN
 GLENDALE, AZ

Project Number 21402
 Drawn By AJP
 Checked By JH
 Date 21 FEB 2022

Revisions

NOTE:
 THE DOCUMENTATION CONTAINED ON THIS SHEET WAS NOT PREPARED BY HENDERSON ENGINEERS AND IS INCLUDED IN THIS SET FOR REFERENCE ONLY. HENDERSON ENGINEERS REVIEWED THE DOCUMENTATION ON THIS SHEET FOR GENERAL COMPLIANCE WITH DESIGN INTENT. SUPPLIER IS RESPONSIBLE THAT ALL FURNISHED EQUIPMENT ON THIS SHEET COMPLIES WITH APPLICABLE LOCAL, STATE, AND FEDERAL LAWS, CODES, AND REGULATIONS.

Drawing
CAPTIVE AIRE
DRAWINGS

M6.1

EXHAUST FAN INFORMATION - JOB#5293112

| FAN UNIT NO | TAG | QTY | FAN UNIT MODEL # | MANUFACTURER | CFM | ESP | RPM | MOTOR ENCL | HP | BHP | PHASE | VOLT | FLA | DISCHARGE VELOCITY | WEIGHT (LBS) | SONES |
|-------------|-------------|-----|------------------|--------------|------|-------|------|--------------|-------|--------|-------|------|------|--------------------|--------------|-------|
| 1 | EF-1 | 1 | CASRE20DD | CAPTIVEAIRE | 3500 | 2.000 | 1449 | DDP, PREMIUM | 5.000 | 2.7980 | 3 | 208 | 15.0 | 1626 FPM | 360 | 28 |
| 2 | EF-2 | 1 | DUI80HFA | CAPTIVEAIRE | 2063 | 1.500 | 1155 | DDP, PREMIUM | 2.000 | 1.0890 | 3 | 208 | 8.3 | 476 FPM | 188 | 14.3 |
| 3 | EF-3 (DISH) | 1 | DR33HFA | CAPTIVEAIRE | 900 | 0.400 | 1593 | DDP | 0.333 | 0.2660 | 1 | 115 | 5.6 | | 59 | 14.1 |
| 4 | EF-4 (BATH) | 1 | DR12HFA | CAPTIVEAIRE | 300 | 0.619 | 1415 | TEAD-ECM | 0.250 | 0.1210 | 1 | 115 | 2.9 | | 49 | 8.7 |

DOAS/RTU FAN SCHEDULE - JOB#5293112

| FAN UNIT NO | TAG | QTY | DOAS/RTU MODEL # | MANUFACTURER | BLOWER | RETURN AIR CFM | MAX OUTSIDE AIR CFM | TOTAL CFM | ESP | HP | BHP | PHASE | VOLT | MCA | MDCP | WEIGHT (LBS) |
|-------------|--------|-----|----------------------------|--------------|--------|----------------|---------------------|-----------|-------|-------|--------|-------|------|--------|------|--------------|
| 5 | DOAS-1 | 1 | CASRTU3-1400-20-20T-DOAS | CAPTIVEAIRE | 20P-3 | 0 | 4900 | 4900 | 0.500 | 7.500 | 4.0480 | 3 | 208 | 117.3A | 125A | 2788 |
| 6 | RTU-1 | 1 | CASRTU3-1300-20-12.5T-DOAS | CAPTIVEAIRE | 20P-3 | 2920 | 1880 | 4800 | 0.500 | 7.500 | 3.7650 | 3 | 208 | 90.2A | 110A | 2475 |
| 7 | RTU-2 | 1 | CASRTU1-1150-15-6T-DOAS | CAPTIVEAIRE | 15P-1 | 1640 | 610 | 2250 | 0.500 | 2.000 | 1.6350 | 3 | 208 | 36.6A | 40A | 1332 |

DOAS/RTU COOLING SCHEDULE

| FAN UNIT NO | TAG | COMPRESSOR | | | OUTDOOR FAN | | | INDOOR COIL | | OUTSIDE AIR DB TEMP | OUTSIDE AIR WB TEMP | MIXED AIR DB TEMP | MIXED AIR WB TEMP | LEAVING DB TEMP | LEAVING WB TEMP | LEAVING DP TEMP | TOTAL CAPACITY | SENSIBLE CAPACITY | LATENT CAPACITY | REHEAT LEAVING DB TEMP | REHEAT LEAVING WB TEMP | DESIRED REHEAT CAPACITY | MAX REHEAT CAPACITY | REHEAT LEAVING RELATIVE HUMIDITY | MOISTURE REMOVAL RATE | IEER | |
|-------------|--------|------------|---------|-------|---------------|---------|-----------------|-------------|------|---------------------|---------------------|-------------------|-------------------|-----------------|-----------------|-----------------|----------------|-------------------|-----------------|------------------------|------------------------|-------------------------|---------------------|----------------------------------|-----------------------|--------------|-----------|
| | | TONNAGE | VOLTAGE | PHASE | MOTOR VOLTAGE | MOTOR Ø | MOTOR FREQUENCY | MOTOR QTY | ROWS | | | | | | | | | | | | | | | | | | FACE AREA |
| 5 | DOAS-1 | 20 | 190-240 | 3 | 200-240 | 3 | 60 | 3 | 7 | 11.9 SQFT | 82.6°F | 74.4°F | 82.6°F | 74.4°F | 59.3°F | 58.4°F | 57.9°F | 264.0 MBH | 117.7 MBH | 146.3 MBH | 70.0°F | 62.3°F | 56.1 MBH | 129.6 MBH | 66 | 132.4 LBS/HR | 18.2 |
| 6 | RTU-1 | 12.5 | 190-240 | 3 | 200-240 | 3 | 60 | 2 | 6 | 11.9 SQFT | 82.6°F | 74.4°F | 78.0°F | 67.2°F | 56.8°F | 56.7°F | 56.7°F | 154.0 MBH | 105.3 MBH | 48.7 MBH | 70.0°F | 61.6°F | 68.1 MBH | 101 MBH | 63 | 44.6 LBS/HR | 21.3 |
| 7 | RTU-2 | 6 | 190-240 | 3 | 200-240 | 3 | 60 | 2 | 4 | 6.2 SQFT | 82.6°F | 74.4°F | 77.1°F | 65.7°F | 53.8°F | 53.8°F | 53.9°F | 78.1 MBH | 54.2 MBH | 23.9 MBH | 70.0°F | 59.9°F | 39.3 MBH | 56 MBH | 56 | 21.9 LBS/HR | 19.5 |

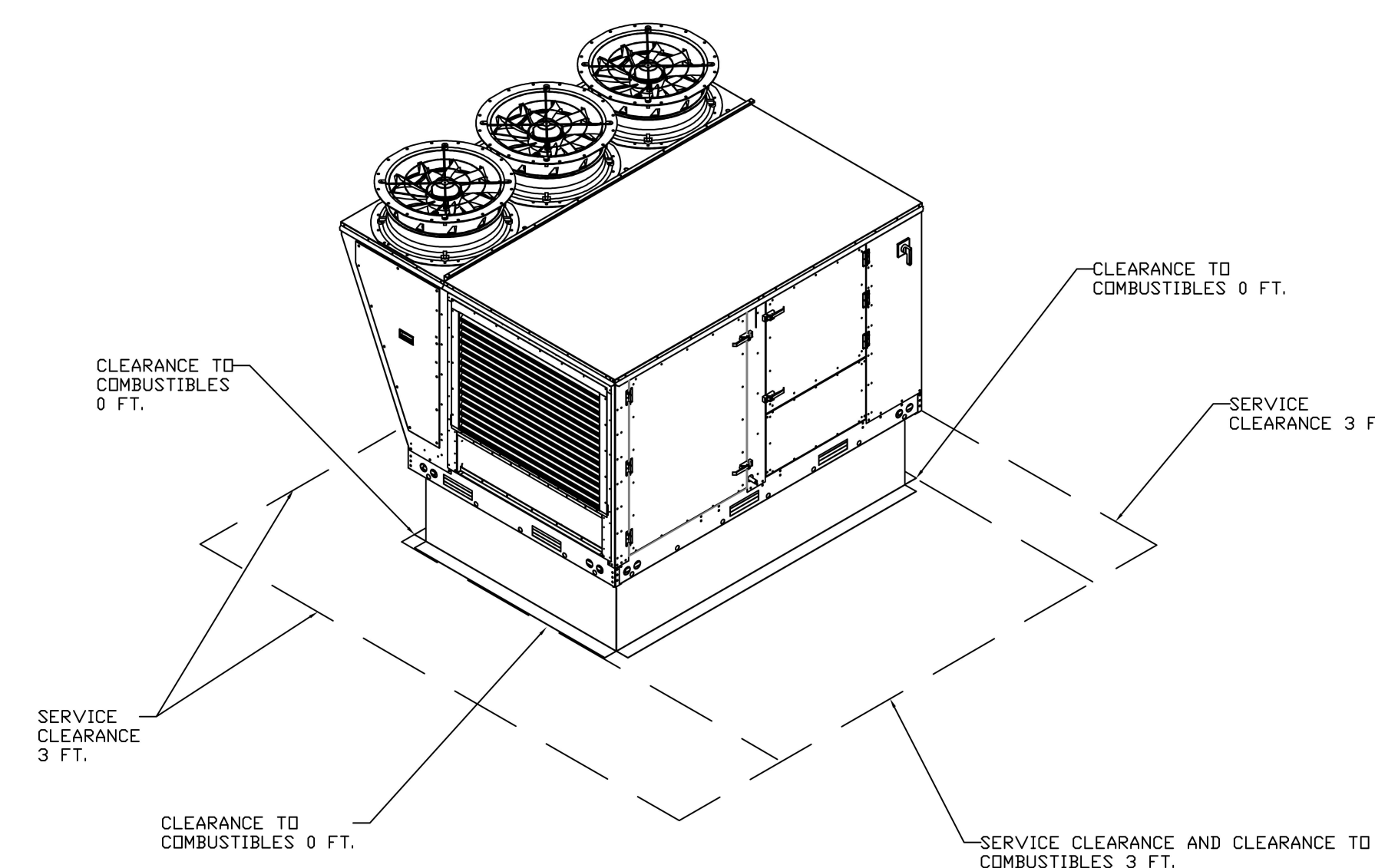
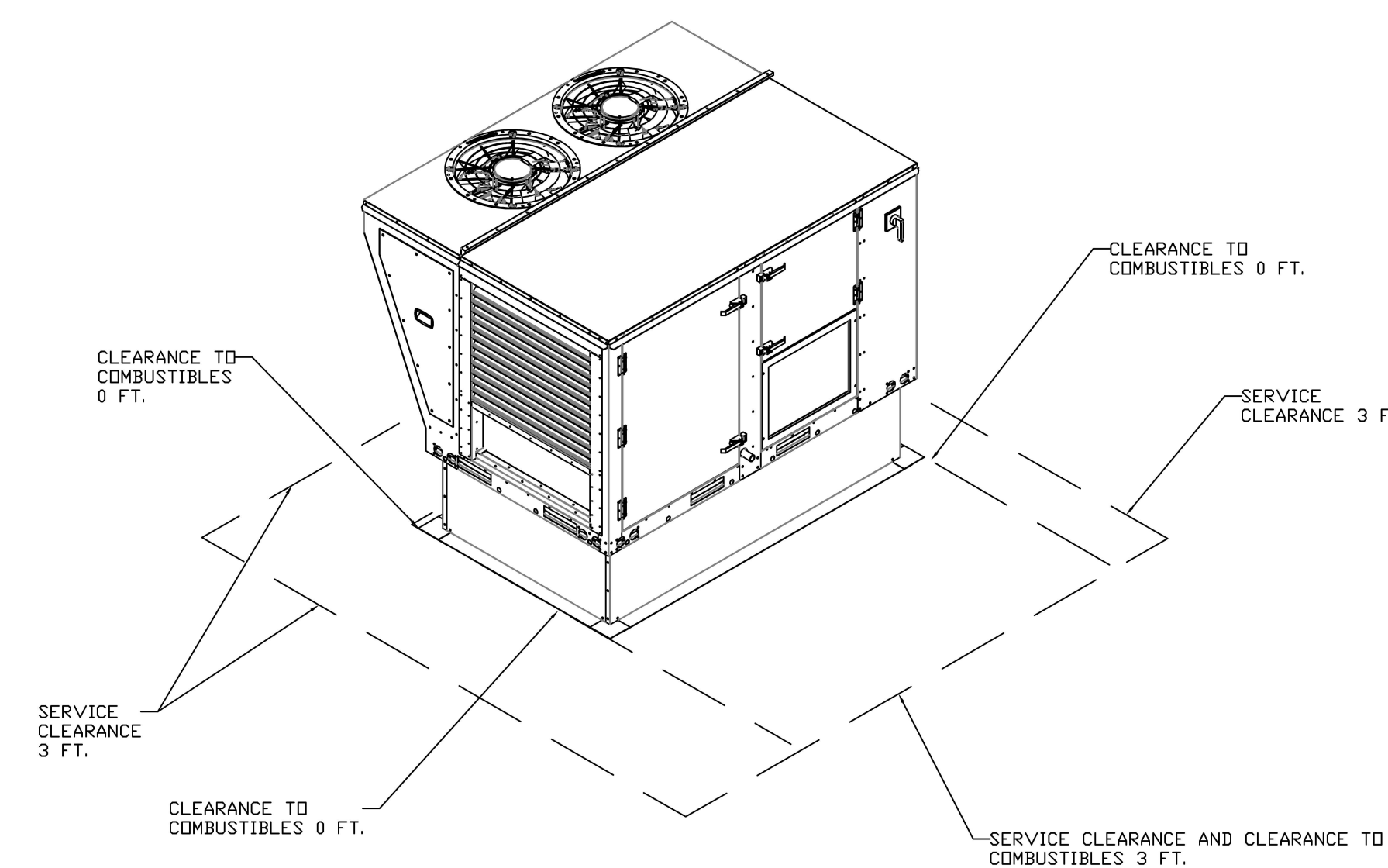
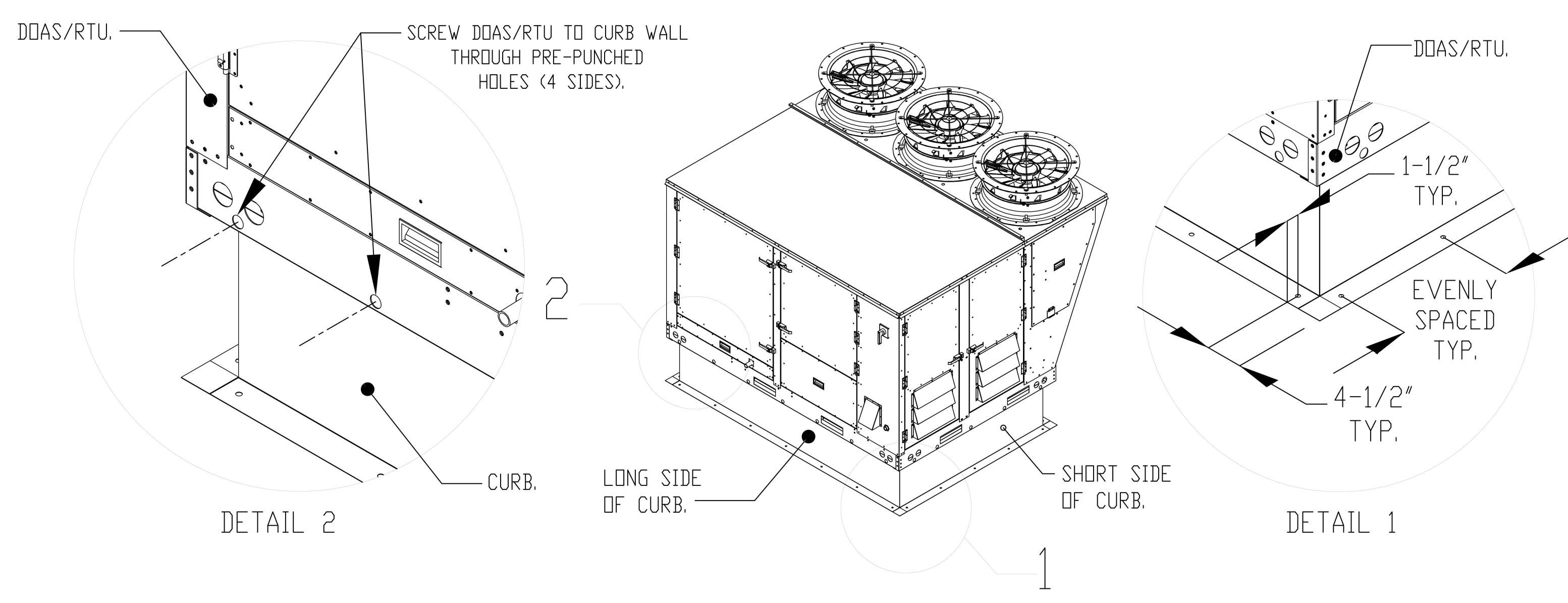
DOAS/RTU HEATING SCHEDULE

| FAN UNIT NO | TAG | INPUT BTUs | OUTPUT BTUs | TEMP RISE | REQUIRED INPUT GAS PRESSURE | GAS TYPE | BURNER EFFICIENCY(%) |
|-------------|--------|------------|-------------|-----------|-----------------------------|----------|----------------------|
| 5 | DOAS-1 | 350000 | 280000 | 51°F | 7 IN. W.C. - 14 IN. W.C. | NATURAL | 80 |
| 6 | RTU-1 | 232988 | 186390 | 35°F | 7 IN. W.C. - 14 IN. W.C. | NATURAL | 80 |
| 7 | RTU-2 | 93611 | 74889 | 30°F | 7 IN. W.C. - 14 IN. W.C. | NATURAL | 80 |

| FAN UNIT NO | TAG | DOAS/RTU MODEL # | HEAT PUMP ENTERING DB TEMP | HEAT PUMP OUTSIDE AIR DB TEMP | HEAT PUMP MAX TEMP RISE | HEAT PUMP DISCHARGE DB TEMP | CDP |
|-------------|--------|----------------------------|----------------------------|-------------------------------|-------------------------|-----------------------------|-----|
| 5 | DOAS-1 | CASRTU3-1400-20-20T-DOAS | 50.0°F | 50.0°F | 32.0°F | 82.0°F | 3.2 |
| 6 | RTU-1 | CASRTU3-1300-20-12.5T-DOAS | 65.0°F | 50.0°F | 27.0°F | 92.0°F | 3.4 |
| 7 | RTU-2 | CASRTU1-1150-15-6T-DOAS | 65.0°F | 50.0°F | 30.0°F | 95.0°F | 3.5 |

TYPICAL DOAS/RTU ROOF MOUNTING INSTALLATION INSTRUCTIONS

1. SECURE THE CURB TO THE ROOF FRAMING MEMBERS BY DRILLING 1/4" PILOT HOLES IN THE CURB FLANGES AT LOCATIONS SHOWN IN THE DIAGRAM BELOW. USING 3/8" X 2" ZINC PLATED STEEL LAG BOLTS, AND ZINC PLATED WASHERS, SCREW THROUGH THE CURB FLANGES AND INTO THE ROOF FRAMING MEMBERS. A MINIMUM OF (5) LAG BOLTS ON EACH SHORT SIDE, AND (7) LAG BOLTS ON EACH LONG SIDE IS REQUIRED.
2. SECURE THE UNIT BASE TO THE SIDE WALLS OF THE CURB USING (24) 1/4"-14 X 2" SELF-DRILLING, STEEL ZINC PLATED SCREWS. PRE-PUNCHED HOLES HAVE BEEN PROVIDED FOR EACH SCREW LOCATION.

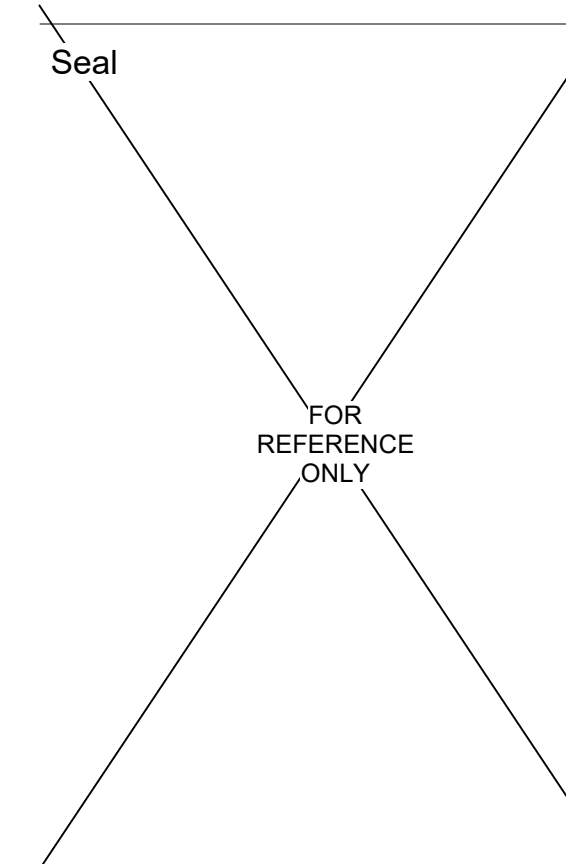


NOTE:
THE DOCUMENTATION CONTAINED ON THIS SHEET WAS NOT PREPARED BY HENDERSON ENGINEERS AND IS INCLUDED IN THIS SET FOR REFERENCE ONLY. HENDERSON ENGINEERS REVIEWED THE DOCUMENTATION ON THIS SHEET FOR GENERAL COMPLIANCE WITH DESIGN INTENT. SUPPLIER IS RESPONSIBLE THAT ALL FURNISHED EQUIPMENT ON THIS SHEET COMPLIES WITH APPLICABLE LOCAL, STATE, AND FEDERAL LAWS, CODES, AND REGULATIONS.

REVISIONS

| DESCRIPTION | DATE |
|-------------|------|
| | |
| | |
| | |
| | |

CAPTIVEAIRE
Denver Office
7300 S Alton Way Building 5, Suite B, Centennial, CO 80112 PHONE: (720) 370-0981 FAX: (919) 227-8989 EMAIL: reg.c@captivewire.com
www.captivewire.com



DP3
ARCHITECTS
DP3 Architects, Ltd.
15 South Main Street, Suite 400
Greenville, SC 29601
864.232.6200
www.DP3architects.com

Red Robin - Glendale, AZ R2
GLENDALE, AZ, 85301

RED ROBIN
GLENDALE, AZ
Project Number 21402
Drawn By AJP
Checked By JH
Date 21 FEB 2022
Revisions

DATE: 1/31/2022
DWG.#: 5293112
DRAWN BY: RJC - 42
SCALE: 3/4" = 1'-0"
MASTER DRAWING
SHEET NO. 5

Drawing
CAPTIVEAIRE
DRAWINGS

M6.4