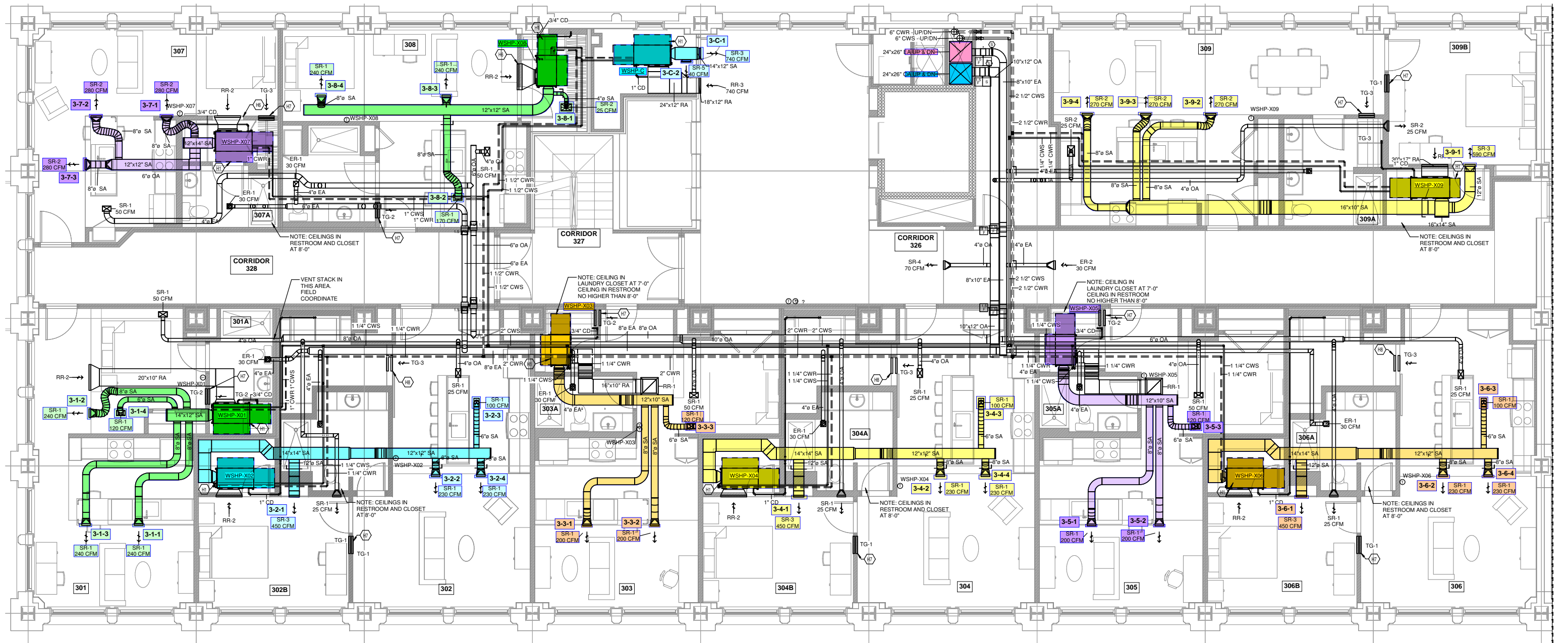


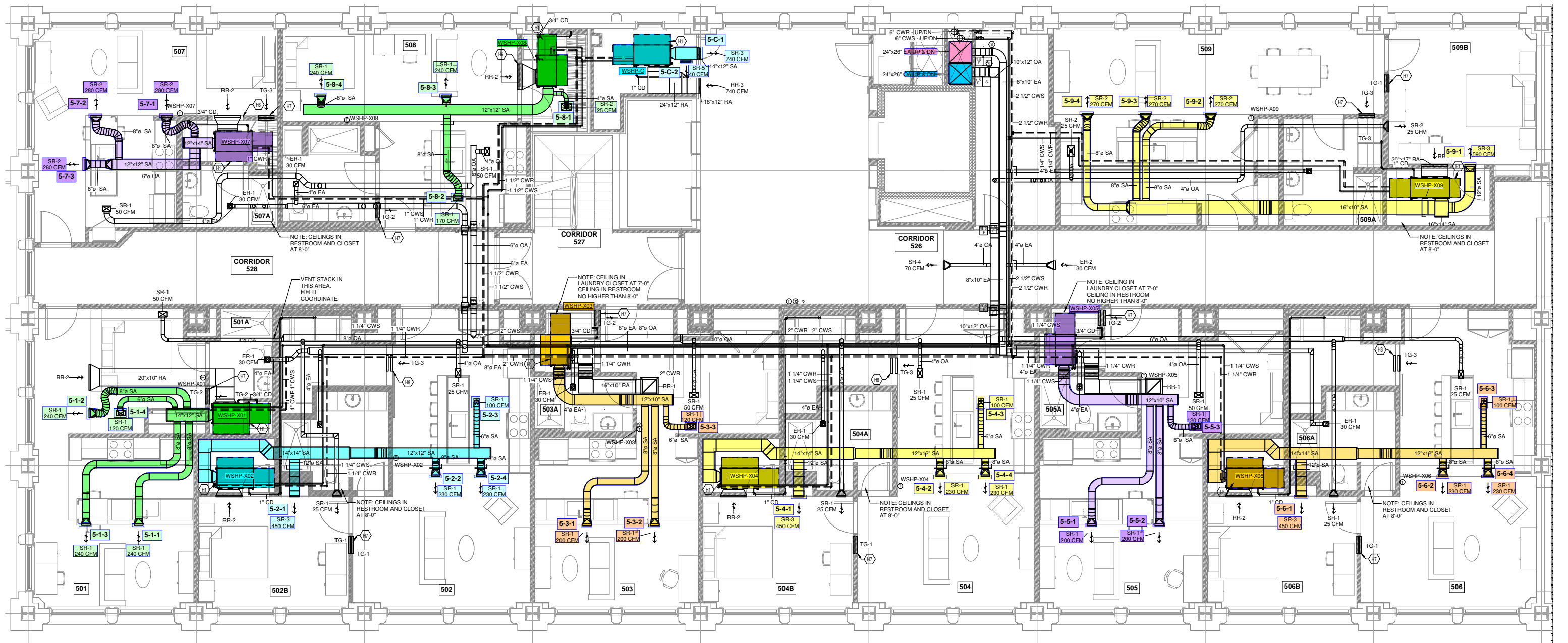
MECHANICAL PLAN - LEVEL 2 - OVERALL
 1/4" = 1'-0"



1 MECHANICAL PLAN - LEVEL 4 THROUGH 9 - OVERALL
 1/4" = 1'-0"

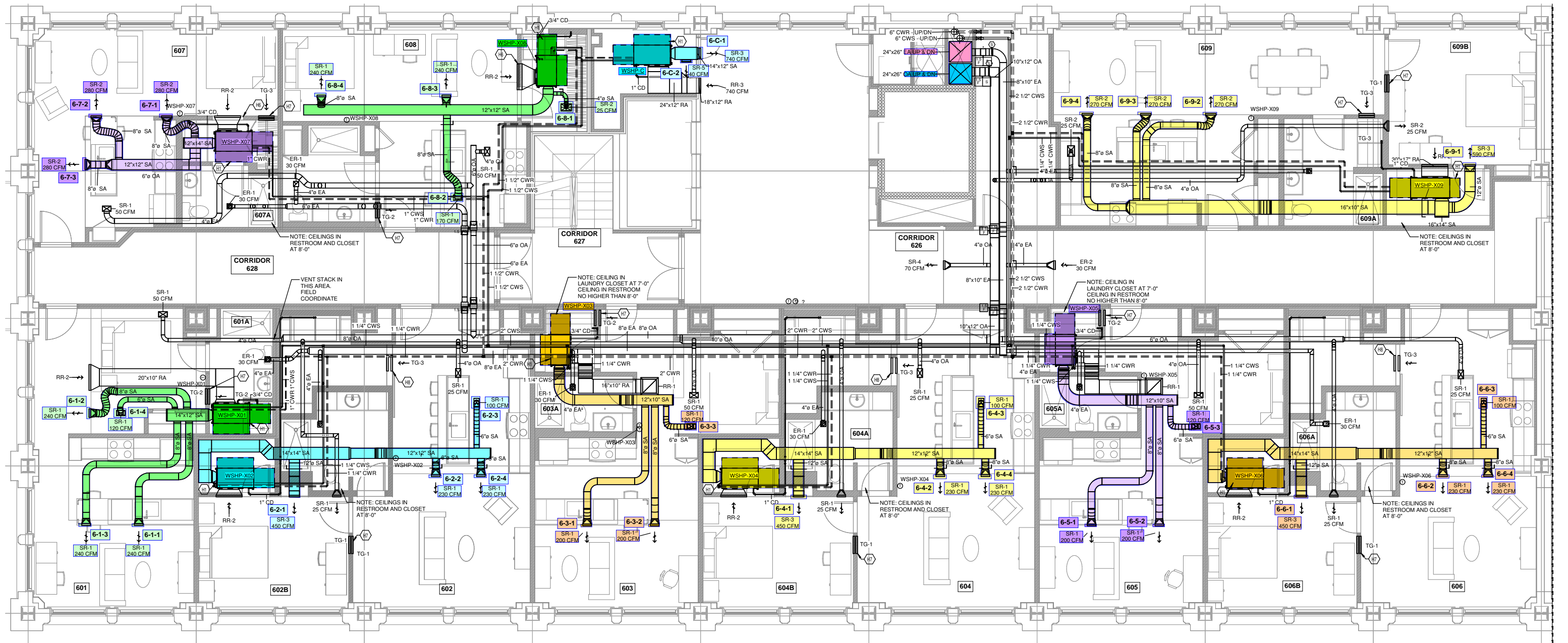
FLOOR 3 OVERALL

Note, the layout for the 3rd floor changed to mirror what is on floors 4-9. I just don't have an updated drawing showing the change. Please take this floor off the same as floors 4-9



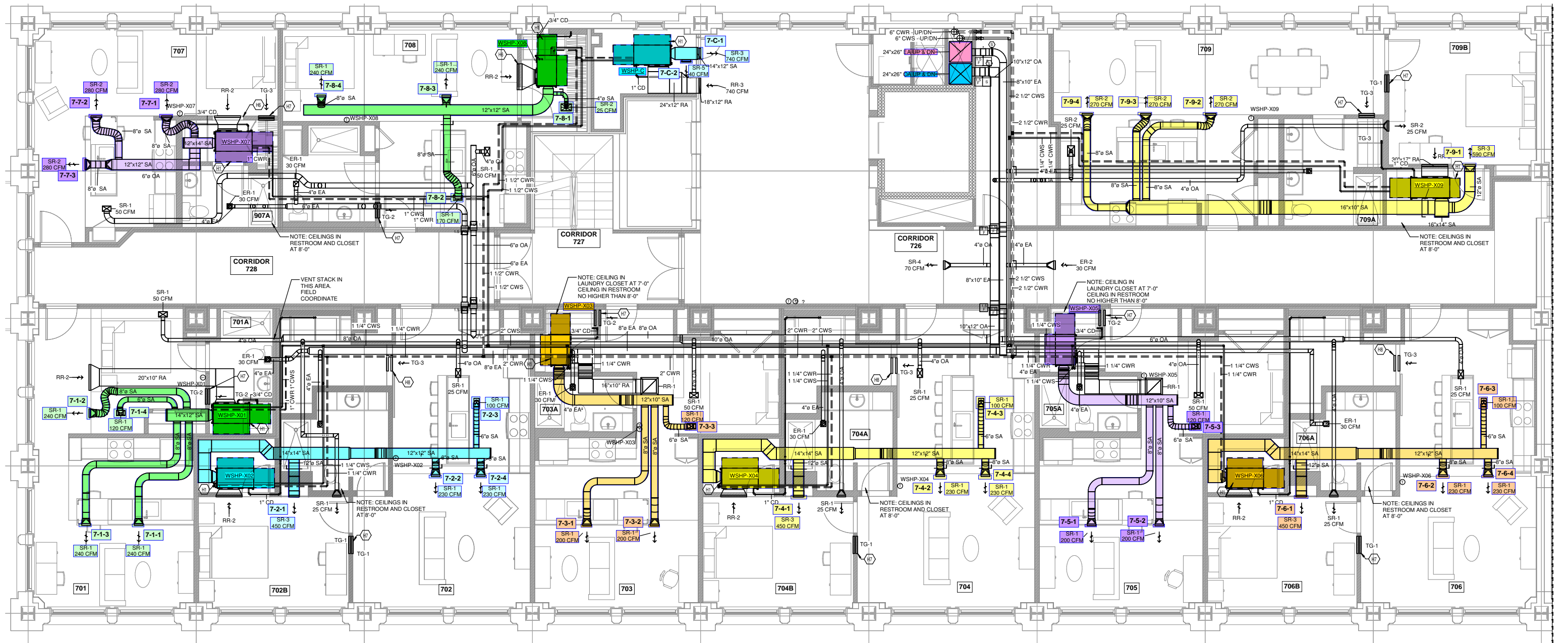
① MECHANICAL PLAN - LEVEL 4 THROUGH 9 - OVERALL
 1/4" = 1'-0"

FLOOR 5 OVERALL



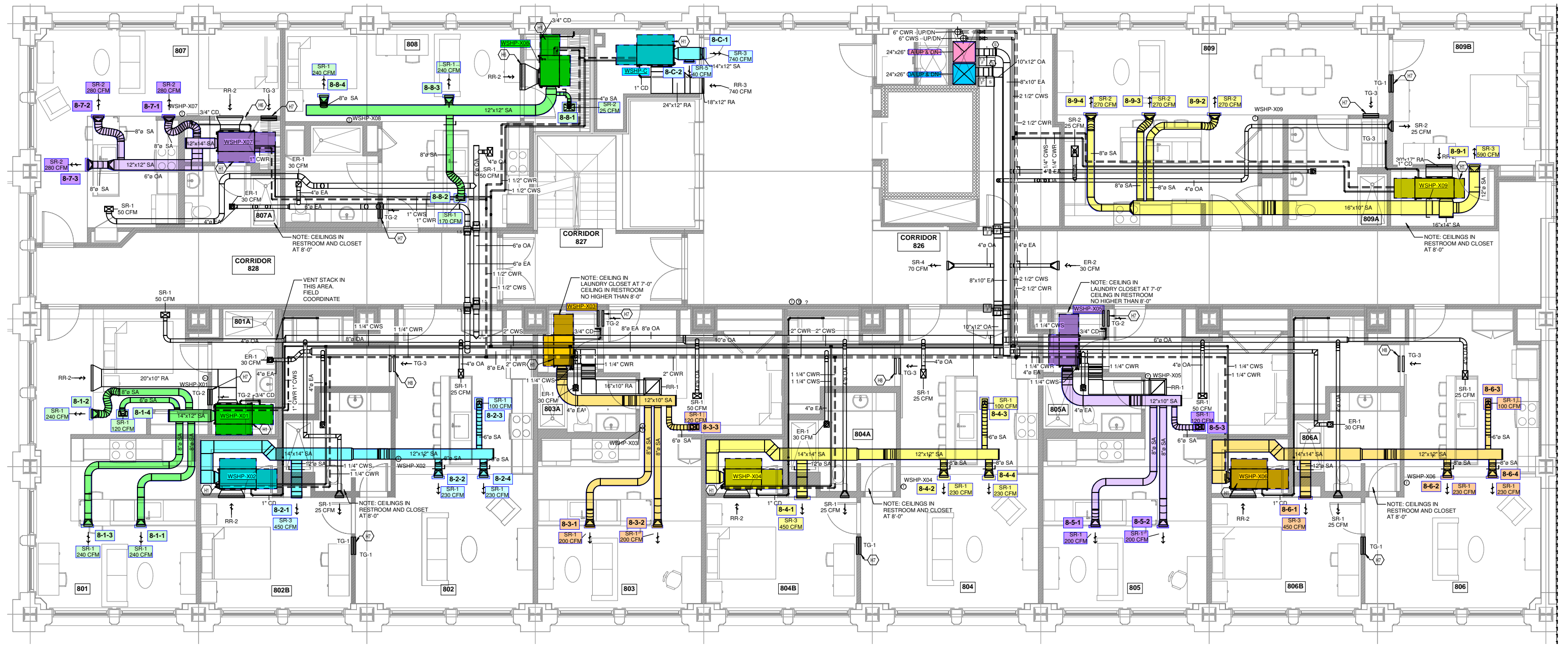
① MECHANICAL PLAN - LEVEL 4 THROUGH 9 - OVERALL
 1/4" = 1'-0"

FLOOR 6 OVERALL



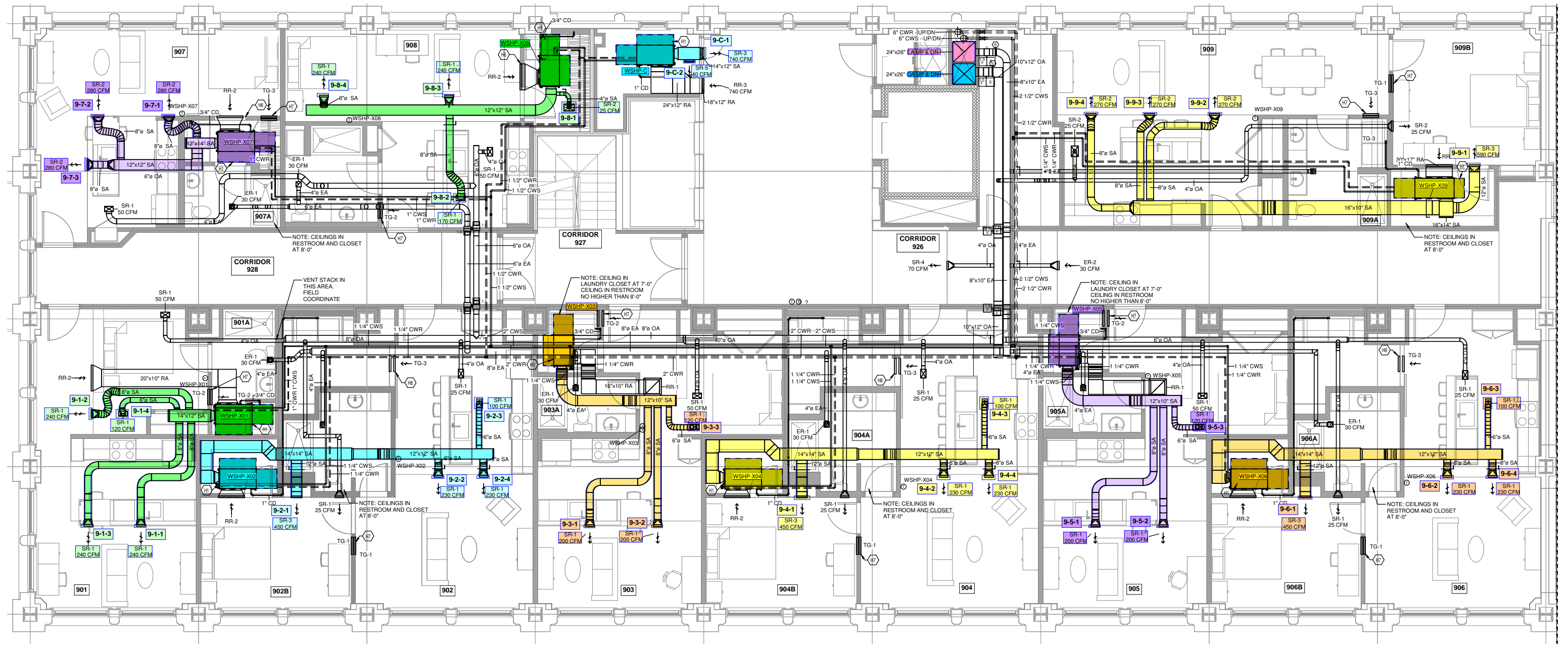
① MECHANICAL PLAN - LEVEL 4 THROUGH 9 - OVERALL
 1/4" = 1'-0"

FLOOR 7 OVERALL



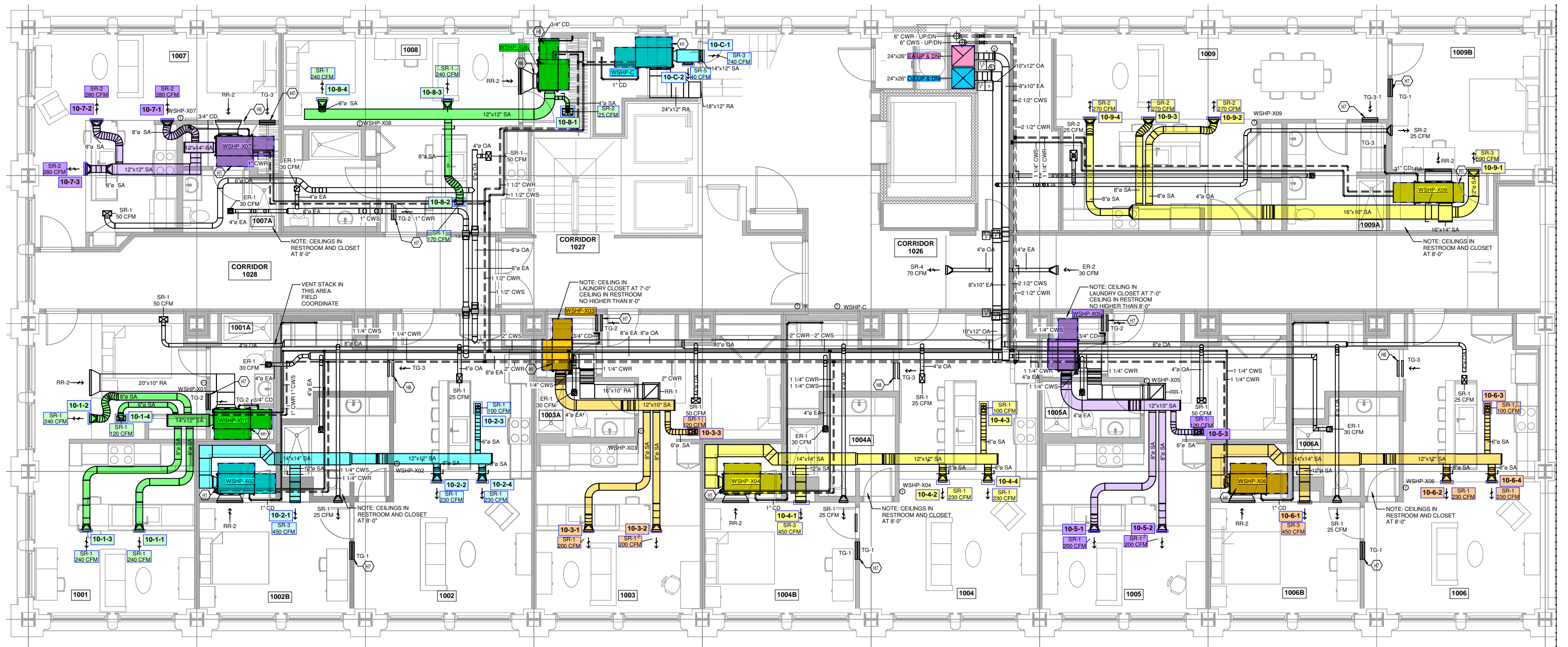
① MECHANICAL PLAN - LEVEL 4 THROUGH 9 - OVERALL
 1/4" = 1'-0"

FLOOR 8 OVERALL

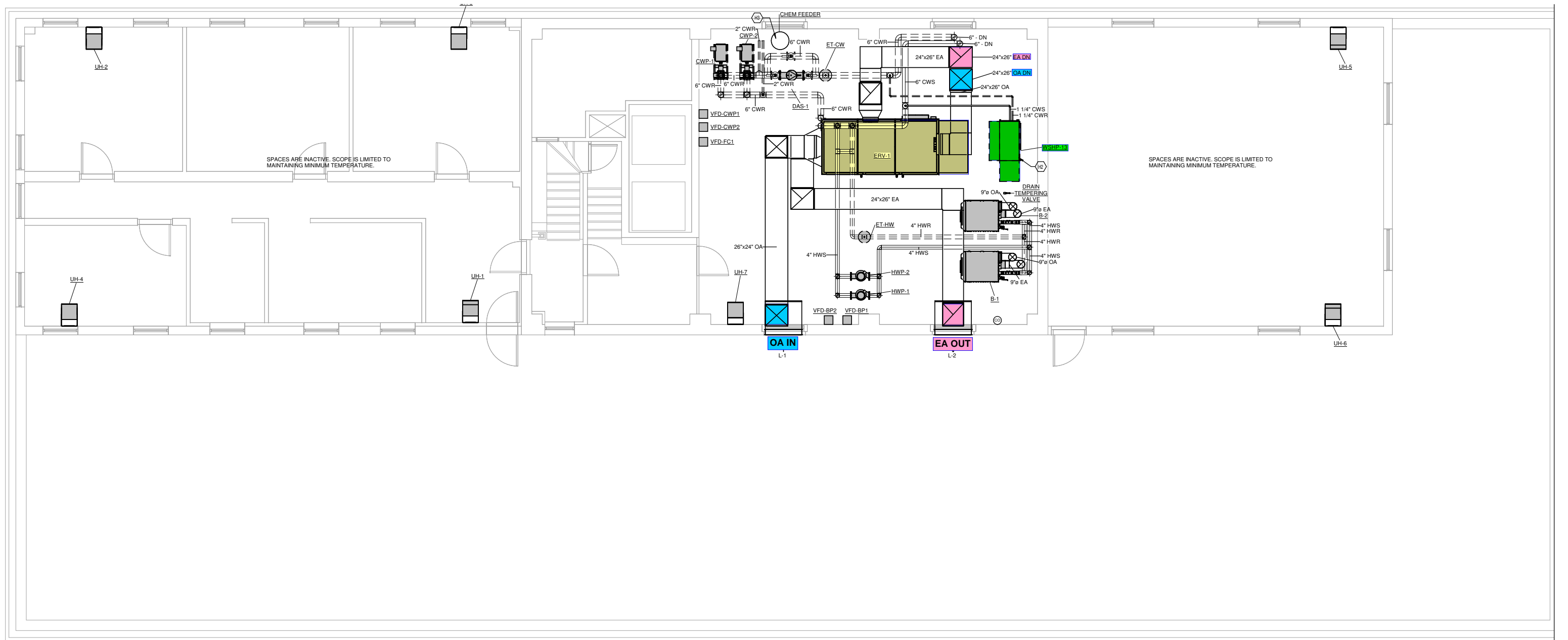


① MECHANICAL PLAN - LEVEL 4 THROUGH 9 - OVERALL
 1/4" = 1'-0"

FLOOR 9 OVERALL



① MECHANICAL PLAN - LEVEL 10 - OVERALL
 1/4" = 1'-0"



① MECHANICAL PLAN - LEVEL 13 - OVERALL
1/4" = 1'-0"