

...INSTRUCTIONS AND AS DETAILED IN THE ARCHITECTURAL AND STRUCTURAL DRAWINGS. IN COMPLIANCE WITH NFPA 96, THE BUILDING CODE, AND AUTHORITIES HAVING JURISDICTION, INSTALL A SMOKE SENSOR TO AUTOMATICALLY ENERGIZE THE EXHAUST AND MAKEUP AIR FANS IF COOKING EQUIPMENT IS MANUFACTURED WATER AND AIR TIGHT. INSTALL CLEANOUTS PER CODE AND AS DETAILED IN THE ARCHITECTURAL AND STRUCTURAL DRAWINGS.

...IN THE ARCHITECTURAL AND STRUCTURAL DRAWINGS. INSTALL REFRIGERANT LINE SET, INSULATION, SIGHT GLASS, FILTER DRIER, PRESSURE CONTROL, LOW AMBIENT CONTROLS, AND ELECTRICAL CONTROLS. INSTALLATION SHALL COMPLY WITH ASHRAE/ANSI STANDARDS. CUT 2-1/2" HOLE IN WALK-IN COOLER ROOF FOR EXHAUST. FOLLOW MANUFACTURER'S INSTALLATION INSTRUCTIONS AFTER LINE SET IS INSTALLED.

...IN THE ARCHITECTURAL AND STRUCTURAL DRAWINGS. INSTALL REFRIGERANT LINE SET, INSULATION, SIGHT GLASS, FILTER DRIER, PRESSURE CONTROL, LOW AMBIENT CONTROLS, AND ELECTRICAL CONTROLS. INSTALLATION SHALL COMPLY WITH ASHRAE/ANSI STANDARDS. SEAL PIPING PENETRATIONS THROUGH ROOF. INSTALL REFRIGERANT LINE SET UNDER THE ROOF DECK TO WITHIN 3' OF THE REMOTE CONDENSER. FOLLOW MANUFACTURER'S INSTALLATION INSTRUCTIONS AFTER LINE SET IS INSTALLED. FOLLOW MANUFACTURER'S INSTALLATION INSTRUCTIONS AND AS DETAILED IN THE ARCHITECTURAL AND STRUCTURAL DRAWINGS.

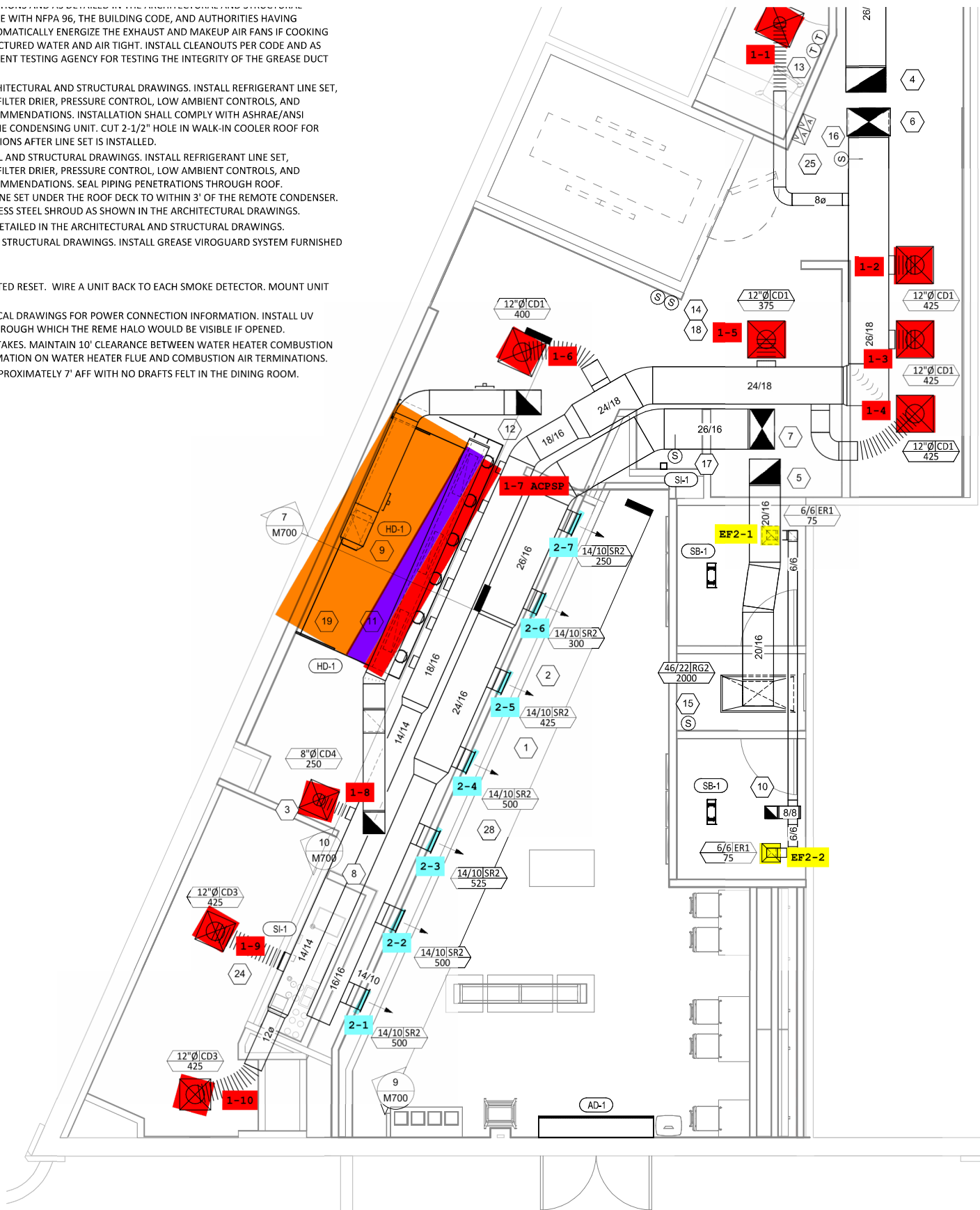
...IN THE ARCHITECTURAL AND STRUCTURAL DRAWINGS. INSTALL GREASE VIROGUARD SYSTEM FURNISHED BY THE MANUFACTURER.

...TYPICAL.

...MOUNT KEY OPERATED RESET. WIRE A UNIT BACK TO EACH SMOKE DETECTOR. MOUNT UNIT TO THE WALL.

...SEE ELECTRICAL DRAWINGS FOR POWER CONNECTION INFORMATION. INSTALL WALK-IN COOLER ACCESS DOOR(S) THROUGH WHICH THE REME HALO WOULD BE VISIBLE IF OPENED.

...OUTSIDE AIR INTAKES. MAINTAIN 10' CLEARANCE BETWEEN WATER HEATER COMBUSTION AIR INTAKE AND EXHAUST. FOR MORE INFORMATION ON WATER HEATER FLUE AND COMBUSTION AIR TERMINATIONS, SEE THE WATER HEATER INSTALLATION MANUAL. EXHAUST FROM ROOM AT APPROXIMATELY 7' AFF WITH NO DRAFTS FELT IN THE DINING ROOM.



**HVAC FLOOR PLAN**  
 1/4" = 1'-0"