



4635 Trueman Blvd. Suite 250
Hilliard, OH 43026
Voice: (614) 751-9610
Fax: (614) 552-5240

Shop Drawing Review

Project: CMG – West Hillsboro, FL

Log Number:	1	Return Date:	04/20/2023
Date Received:	-	<input type="checkbox"/> Approved	
Resubmittal	<input type="checkbox"/> Check if a Resubmittal	<input checked="" type="checkbox"/> Approved as Noted	
Date Previously Returned:		<input type="checkbox"/> Revise and Resubmit	
		<input type="checkbox"/> Rejected	

Specification: EF-1, EF-2, MAU-1, HD-1

Approval is only for general conformance with the design concept and the information given in the Construction Documents. Corrections or comments made on the shop drawings during this review do not relieve the contractor from compliance with the requirements of the plans and specifications. Review of a specific item shall not include review of an assembly of which the item is a component. The Contractor is responsible for: dimensions to be confirmed and correlated at the jobsite; information that pertains solely to the fabrication processes or to the means, methods, techniques, sequences and procedures of construction; coordination of the Work with that of all other trades and performing all Work in a safe and satisfactory manner.

Contractor: Captive Aire

Submittal

Comments:

- Note the current drawings will be revised to match the submittal showing the smaller hood and equipment to accommodate it.
- The MAU-1 does not need a trunkline in this location as we are installing it far enough away to meet the separation requirement so we can avoid roof mounted ductwork which leads to structural support to prevent it from flying away in a high wind event. No resubmittal required.

By: Dennis Alt

FOR QUESTIONS, CALL THE
Highwoods Group
REGION 40
PHONE: (919) 875-0420
EMAIL: reg40@captiveaire.com

PATENT NUMBERS
AC-PSP (UNITED STATES) - US PATENT 7963830 B2.
AC-PSP WALL (CANADA) - CA PATENT 2820509.
AC-PSP ISLAND (CANADA) - CA PATENT 2520330.

HOOD INFORMATION - JOB#5950436

HOOD NO	TAG	MODEL	MANUFACTURER	LENGTH	MAX COOKING TEMP	TYPE	APPLIANCE DUTY	DESIGN CFM/FT	TOTAL EXH CFM	EXHAUST PLENUM RISER(S)						MUA CFM	AC CFM	HOOD CONSTRUCTION	HOOD CONFIG		
										WIDTH	LENG	HEIGHT	DIA	CFM	VEL				SP	END TO END	ROW
1		5424 ND-2-ACPSP-F	CAPTIVEAIRE	12' 9"	600 DEG	I	HEAVY	200	2550	10'	24'	4'		2550	1530	-0.966'	1300	696	430 SS WHERE EXPOSED	ALONE	ALONE

HOOD INFORMATION

HOOD NO	TAG	FILTER(S)				LIGHT(S)				UTILITY CABINET(S)				FIRE SYSTEM PIPING	HOOD HANGING WEIGHT		
		TYPE	QTY	HEIGHT	LENGTH	EFFICIENCY @ 7 MICRONS	QTY	TYPE	WIRE GUARD	LOCATION	SIZE	FIRE SYSTEM TYPE	SIZE			ELECTRICAL MODEL #	SWITCHES QUANTITY
1		CAPTRATE SOLID FILTER	9	16"	16"	85% SEE FILTER SPEC	8	L55 SERIES E26	NO	RIGHT	12"x54"x24"	ANSUL R-102	3.0/3.0	SC-311110MA	1 LIGHT 1 FAN	YES	1029 LBS

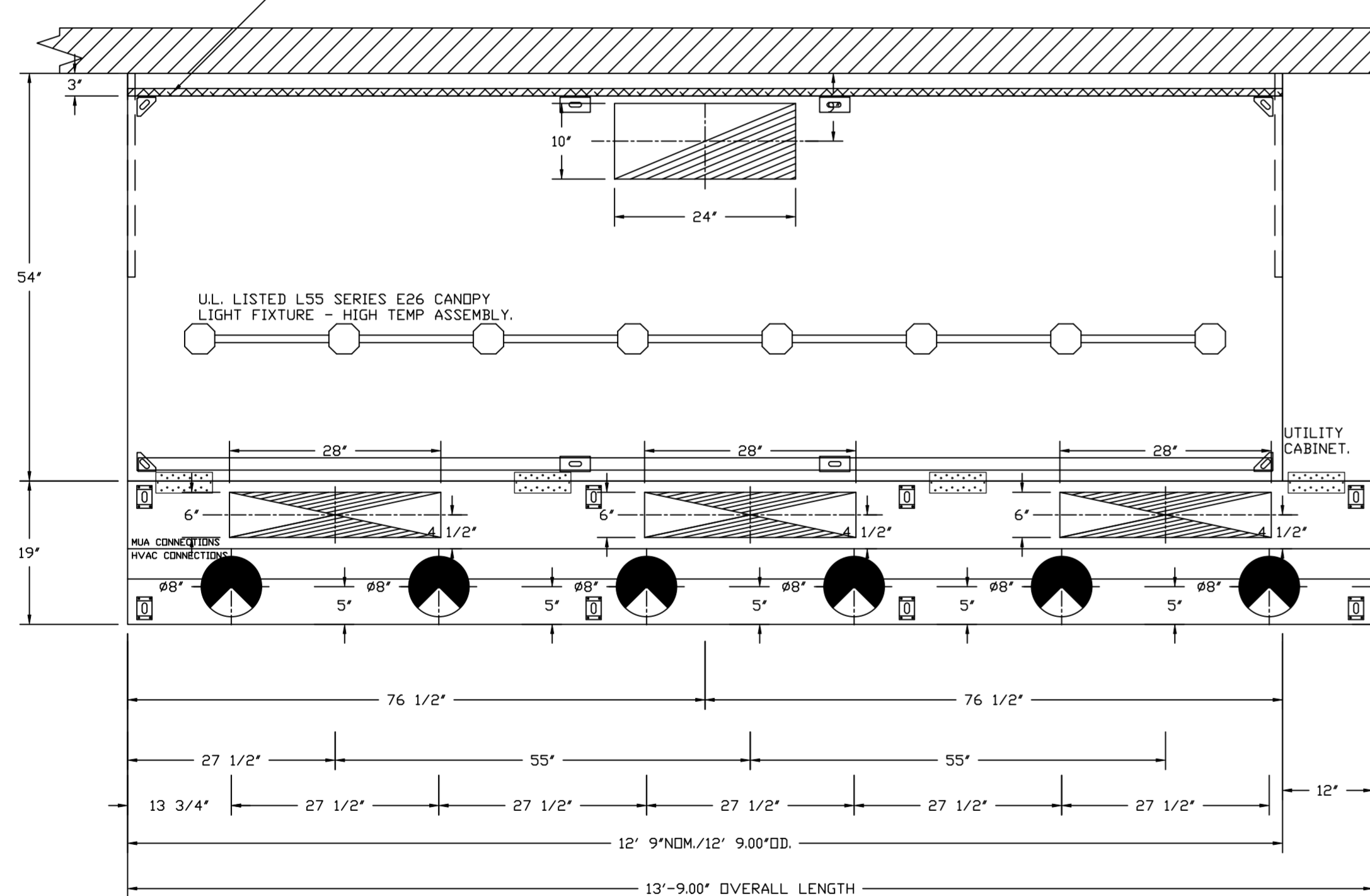
HOOD OPTIONS

HOOD NO	TAG	OPTION
1		FIELD WRAPPER 10.00" HIGH FRONT, LEFT, RIGHT. INSULATION FOR BACK OF HOOD. RISER SENSOR INSTALL 6IN PLEN. RIGHT VERTICAL END PANEL 27" TOP WIDTH, 21" BOTTOM WIDTH, 80" HIGH INSULATED 430 SS. LEFT VERTICAL END PANEL 27" TOP WIDTH, 21" BOTTOM WIDTH, 80" HIGH INSULATED 430 SS. FULL DIMENSION HANGING BRACKET - FRONT.

PERFORATED SUPPLY PLENUM(S)

HOOD NO	TAG	POS	LENGTH	WIDTH	HEIGHT	TYPE	RISER(S)																																									
							WIDTH	LENG	DIA	CFM	SP																																					
1		Front	165'	19'	6'	MUA	6"	28"		432	0.127"	MUA	6"	28"		432	0.127"	MUA	6"	28"		432	0.127"	AC		8"	116	0.043"	AC		8"	116	0.043"	AC		8"	116	0.043"	AC		8"	116	0.043"	AC		8"	116	0.043"

1" LAYER OF INSULATION FACTORY INSTALLED IN INTERNAL BACK STANDOFF. MEETS 0 INCH REQUIREMENTS FOR CLEARANCE TO COMBUSTIBLE SURFACES.



PLAN VIEW - HOOD #1
12' 9.00" LONG 5424ND-2-ACPSP-F
NOTE: ADDITIONAL HANGING ANGLES PROVIDED FOR HOODS 12' AND LONGER.

ACPSP SHIPS LOOSE FOR FIELD INSTALLATION

SPECIFICATION: CAPTRATE® GREASE-STOP® SOLID FILTER

THE CAPTRATE GREASE-STOP SOLID FILTER IS A SINGLE-STAGE FILTER FEATURING A UNIQUE S-BAFFLE DESIGN IN CONJUNCTION WITH A SLOTTED REAR BAFFLE DESIGN, TO DELIVER EXCEPTIONAL FILTRATION EFFICIENCY.

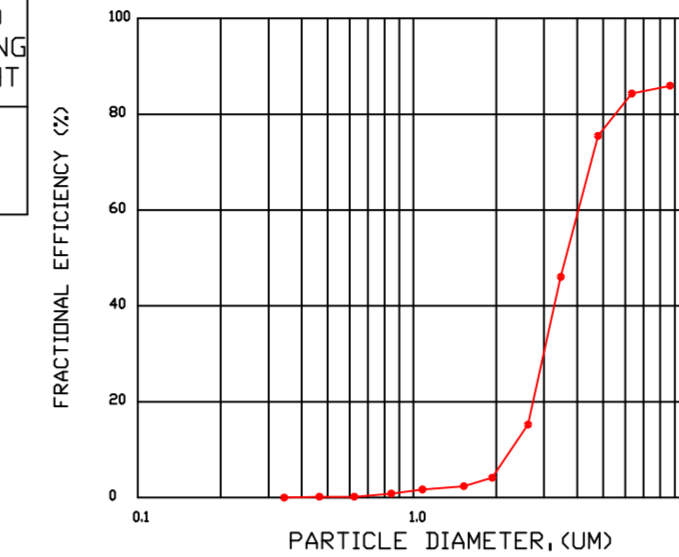
FILTER IS STAINLESS STEEL CONSTRUCTION, AND SIZED TO FIT INTO STANDARD 2-INCH DEEP HOOD CHANNEL(S).

UNITS SHALL INCLUDE STAINLESS STEEL HANDLES AND A FASTENING DEVICE TO SECURE THE TWO COMPONENTS WHEN ASSEMBLED.

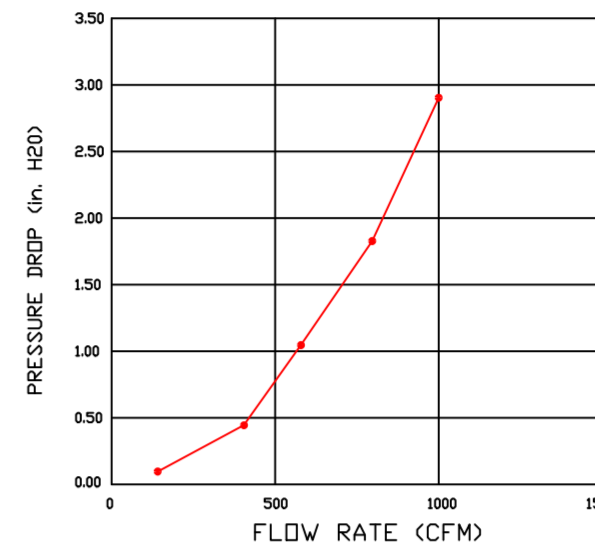
GREASE EXTRACTION EFFICIENCY PERFORMANCE SHALL REMOVE AT LEAST 75% OF GREASE PARTICLES FIVE MICRONS IN SIZE, AND 85% GREASE PARTICLES SEVEN MICRONS IN SIZE AND LARGER, WITH A CORRESPONDING PRESSURE DROP NOT TO EXCEED 1.0 INCHES OF WATER GAUGE.

THE CAPTRATE GREASE-STOP SOLID WAS TESTED TO ASTM STANDARD ASTM F2519-05, MANUFACTURER APPROVED FOR USE IN SOLID FUEL APPLICATIONS AS A SPARK ARRESTER.

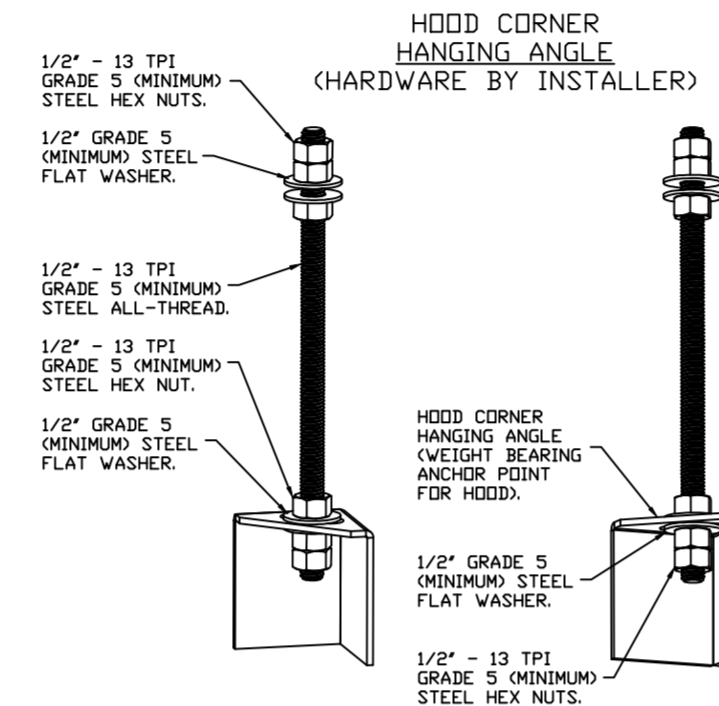
EFFICIENCY VS. PARTICLE DIAMETER



PRESSURE DROP VS. FLOW RATE

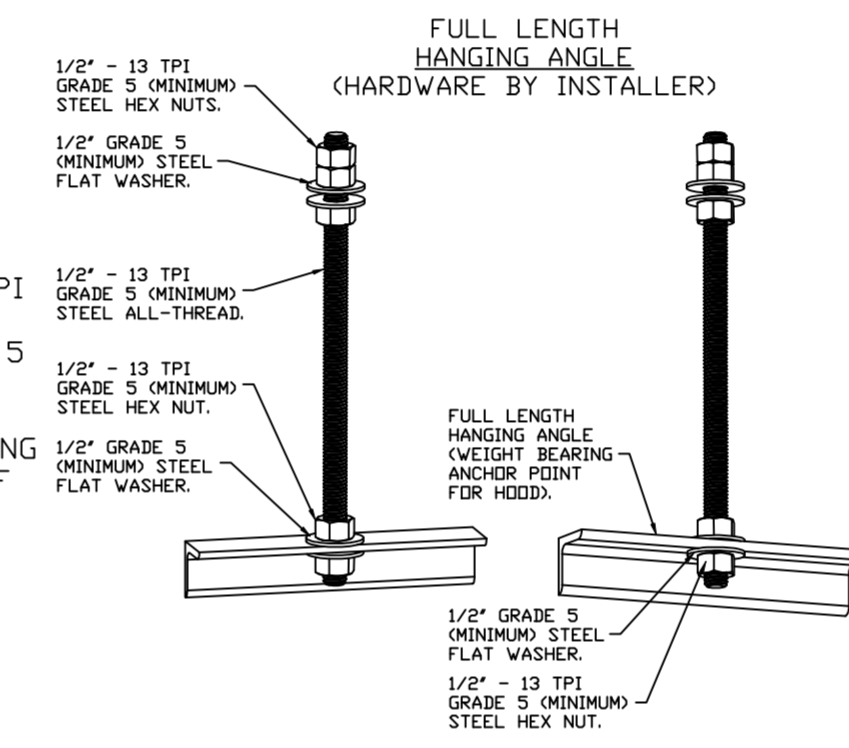


CAPTRATE FILTERS ARE BUILT IN COMPLIANCE WITH:
NFPA #96.
NSF STANDARD #2.
UL STANDARD #1046.
INT. MECH. CODE (IMC).
ULC-S649.



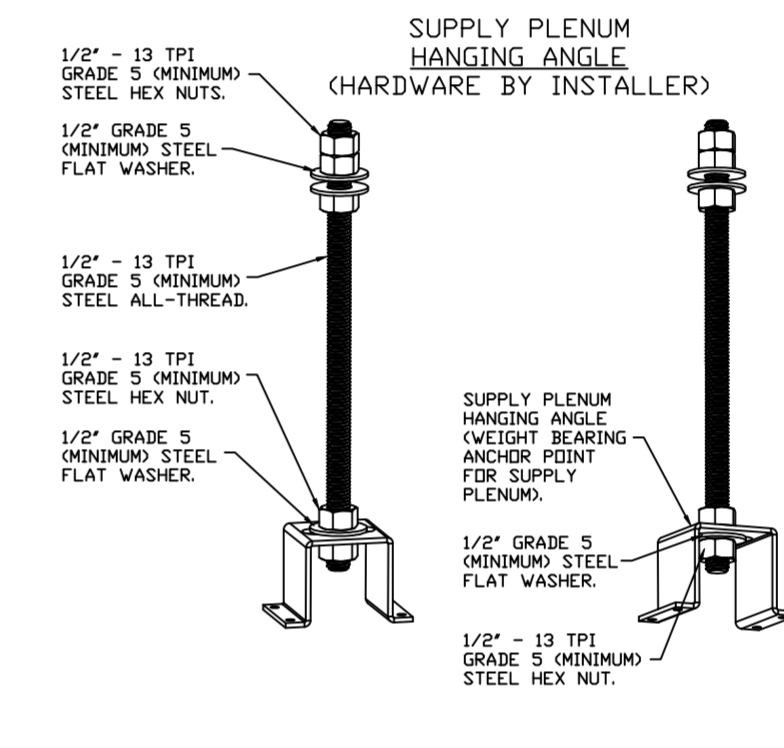
ASSEMBLY INSTRUCTIONS

HANGING ANGLE MUST BE SUPPORTED WITH 1/2" - 13 TPI GRADE 5 (MINIMUM) ALL-THREAD, SANDWICH HANGING ANGLES AND CEILING ANCHOR POINTS WITH 1/2" GRADE 5 (MINIMUM) STEEL FLAT WASHERS AND 1/2" - 13 TPI GRADE 5 (MINIMUM) HEX NUTS AS SHOWN. MUST USE DOUBLED HEX NUT CONFIGURATION BENEATH HOOD HANGING ANGLES AND ABOVE CEILING ANCHORS. MAINTAIN 1/4" OF EXPOSED THREADS BENEATH BOTTOM HEX NUT. TORQUE ALL HEX NUTS TO 57 FT-LBS.



ASSEMBLY INSTRUCTIONS

HANGING ANGLE MUST BE SUPPORTED WITH 1/2" - 13 TPI GRADE 5 (MINIMUM) ALL-THREAD, SANDWICH HANGING ANGLES AND CEILING ANCHOR POINTS WITH 1/2" GRADE 5 (MINIMUM) STEEL FLAT WASHERS AND 1/2" - 13 TPI GRADE 5 (MINIMUM) HEX NUTS AS SHOWN. MUST USE DOUBLED HEX NUT CONFIGURATION ABOVE CEILING ANCHORS. SINGLE HEX NUT BENEATH HANGING ANGLE IS ACCEPTABLE FOR FULL LENGTH HANGING ANGLES. MAINTAIN 1/4" OF EXPOSED THREADS BENEATH BOTTOM HEX NUT. TORQUE ALL HEX NUTS TO 57 FT-LBS.



ASSEMBLY INSTRUCTIONS

HANGING ANGLE MUST BE SUPPORTED WITH 1/2" - 13 TPI GRADE 5 (MINIMUM) ALL-THREAD, SANDWICH HANGING ANGLES AND CEILING ANCHOR POINTS WITH 1/2" GRADE 5 (MINIMUM) STEEL FLAT WASHERS AND 1/2" - 13 TPI GRADE 5 (MINIMUM) HEX NUTS AS SHOWN. MUST USE DOUBLED HEX NUT CONFIGURATION ABOVE CEILING ANCHORS. SINGLE HEX NUT BENEATH HANGING ANGLE IS ACCEPTABLE FOR PSP HANGING ANGLES. MAINTAIN 1/4" OF EXPOSED THREADS BENEATH BOTTOM HEX NUT. TORQUE ALL HEX NUTS TO 57 FT-LBS.

SHOP DRAWING REVIEW

Reviewed for compliance with the architectural drawings

- REVIEWED
- FURNISH AS CORRECTED
- REVISE AND RESUBMIT
- SUBMIT SPECIFIED ITEM
- REJECTED

This review is only for conformance with the design intent of the project and compliance with information given within the contract documents. Corrections or comments shall not relieve the contractor from compliance with the contract documents nor allow departures from them. The contractor remains solely responsible for verifying all dimensions, correlating quantities, selecting fabrication processes and construction techniques, coordinating the work of all trades, and insuring that all work is performed safely and in a complete and workmanlike manner.

Stefano De Luca & Associates, Inc.

Architecture & Design

AA#26001224

By ARL Date 04/17/23

Project # 2126 Submittal # 03

REVISIONS

DESCRIPTION	DATE

CAPTIVEAIRE

Highwoods Group

4641 Paragon Park Rd., Raleigh, NC 27616 PHONE: (919) 875-0420 FAX: (919) 875-0577 EMAIL: reg40@captiveaire.com

CHIPOTLE WEST HILLSBORO #4437
DEERFIELD BEACH, FL, 33442

DATE: 4/16/2023

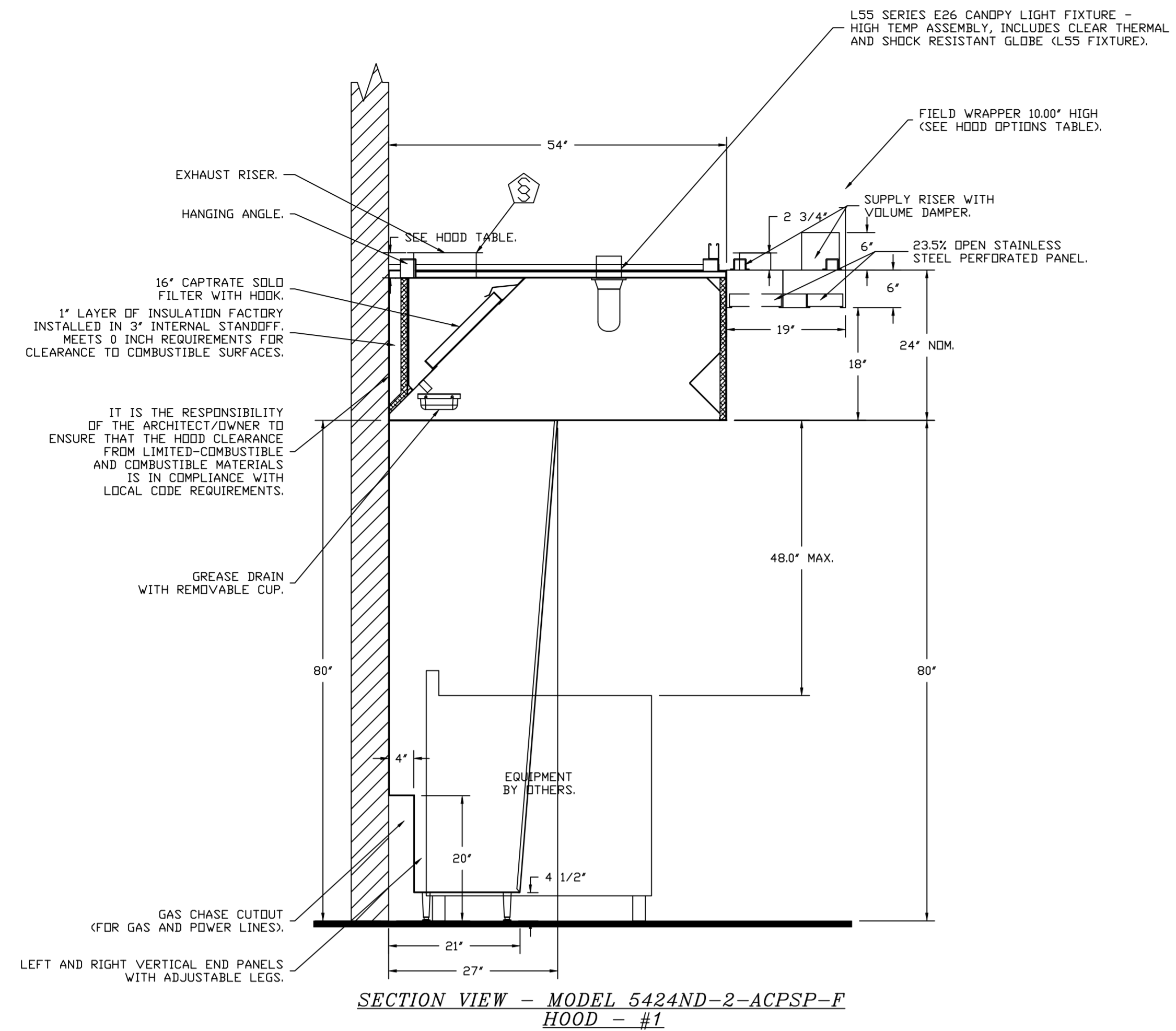
DWG.#: 5950436

DRAWN BY: JMB-40

SCALE: 3/4" = 1'-0"

MASTER DRAWING

SHEET NO. 1



FIRE SYSTEM INFORMATION - JOB#5950436

FIRE SYSTEM NO	TAG	TYPE	SIZE	FLOW POINTS	INSTALLATION	
					SYSTEM	LOCATION ON HOOD
1		ANSUL R102	3.0/3.0	15	FIRE CABINET RIGHT	RIGHT, HOOD 1

GAS VALVE(S)

FIRE SYSTEM NO	TAG	TYPE	SIZE	SUPPLIED BY
1		MECHANICAL	1.500	CAPTIVEAIRE SYSTEMS

REVISIONS	
DESCRIPTION	DATE

Highwoods Group

4641 Paragon Park Rd., Raleigh, NC 27616 PHONE: (919) 875-0420 FAX: (919) 875-0577 EMAIL: reg@captveaire.com

CHIPOTLE WEST HILLSBORO #4437
DEERFIELD BEACH, FL, 33442

DATE: 4/16/2023
DWG.#: 5950436
DRAWN BY: JMB-40
SCALE: 3/4" = 1'-0"
MASTER DRAWING

SHEET NO.
2

EXHAUST FAN INFORMATION - JOB#5950436

FAN UNIT NO	TAG	QTY	FAN UNIT MODEL #	MANUFACTURER	CFM	ESP	RPM	MOTOR ENCL	HP	BHP	PHASE	VOLT	FLA	DISCHARGE VELOCITY	WEIGHT (LBS)	SONES
1	EF-1	1	DUI80HFA	CAPTIVEAIRE	2550	1.450	1220	DDP,PREMIUM	2.000	1.2800	3	208	8.3	589 FPM	183	16.6
2	EF-2	1	DR12HFA	CAPTIVEAIRE	150	0.600	1282	TEAD-ECM	0.250	0.0940	1	115	2.9		52	6.1

MUA FAN INFORMATION - JOB#5950436

FAN UNIT NO	TAG	QTY	FAN UNIT MODEL #	BLOWER	HOUSING	MIN CFM	DESIGN CFM	ESP	RPM	MOTOR ENCL	HP	BHP	PHASE	VOLT	FLA	MCA	MOCP	WEIGHT (LBS)	SONES
3	MAU-1	1	A1-15D	15MF-1-MDD	A1	-	1300	0.500	1408	DDP,PREMIUM	1.000	0.4310	3	208	3.1	3.9A	15A	370	14.4

FAN OPTIONS

FAN UNIT NO	TAG	QTY	DESCRIPTION
1	EF-1	1	GREASE BOX
		1	MIAMI DADE CERTIFICATION - NOA-1 ALUMINUM UPBLAST
2	EF-2	1	2 YEAR PARTS WARRANTY
		1	12-BDD DAMPER
3	MAU-1	1	ECM WIRING PACKAGE - MANUAL DR 0-10VDC REFERENCE SPEED CONTROL -RTC- (TELCO MOTOR), CCW ROTATION
		1	MIAMI DADE CERTIFICATION - NOA-1 ALUMINUM DOWNBLAST 10
		1	2 YEAR PARTS WARRANTY
		1	SIZE 1 UNTEMPERED COMMERCIAL DOWN DISCHARGE FOR DIRECT DRIVE AHUS
3	MAU-1	1	GRAVITY BACKDRAFT DAMPER FOR SIZE 1 HOUSING
		1	MIAMI DADE CERTIFICATION - NOA-2 SUPPLY
3	MAU-1	1	2 YEAR PARTS WARRANTY

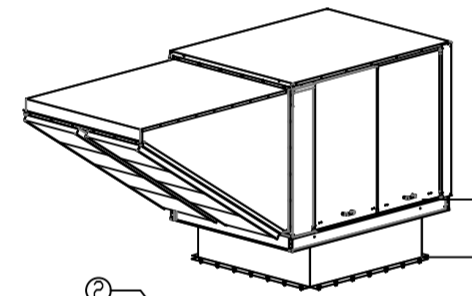
FAN ACCESSORIES

FAN UNIT NO	TAG	EXHAUST				SUPPLY		
		GREASE CUP	GRAVITY DAMPER	WALL MOUNT	SIDE DISCHARGE	GRAVITY DAMPER	MOTORIZED DAMPER	WALL MOUNT
1	EF-1	YES						
2	EF-2		YES					
3	MAU-1					YES		

CURB ASSEMBLIES

NO	ON FAN	TAG	WEIGHT	ITEM	SIZE
1	# 1	EF-1	50 LBS	CURB	26.500"W X 26.500"L X 26.000"H ALONG LENGTH, RIGHT VENTED 16 GAUGE.
2	# 2	EF-2	51 LBS	CURB	17.500"W X 17.500"L X 26.000"H ALONG LENGTH, RIGHT 16 GAUGE.
3	# 3		65 LBS	CURB	21.000"W X 21.000"L X 20.000"H ALONG LENGTH, RIGHT 16 GAUGE.
	# 3			RAIL	4.000"W X 4.000"L X 36.000"H RIGHT.

MIAMI-DADE NOA2 SUPPLY FANS



GENERAL NOTES:

- THIS APPROVAL IS FOR THE STRUCTURAL CAPACITY AND IMPACT RATING OF THE EXTERIOR HOUSING ONLY. IT DOES NOT INCLUDE ANY INTERIOR MECHANISM OR ELECTRICAL PART.
- THESE FANS HAVE NOT BEEN WIND TESTED FOR WIND DRIVEN RAIN TEST PER FLORIDA BUILDING CODE, TAS200, TAS202, TAS203.
- TESTED IN ACCORDANCE TO FLORIDA BUILDING CODE TEST PROTOCOL, TAS200, TAS202, TAS203.
- TESTED FOR AREAS INCLUDING HIGH VELOCITY HURRICANE ZONES.
- TESTED UNDER MIAMI-DADE COUNTY NOTIFICATION NUMBER AT-18033.

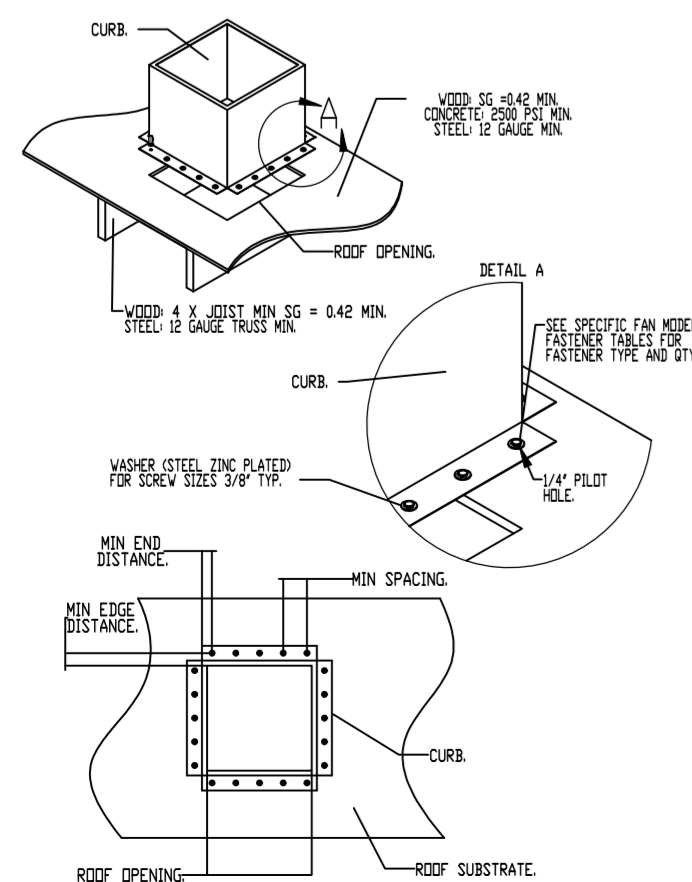
- INSTALLATION INSTRUCTIONS:**
- SECURE FAN BASE TO CURB USING 1/4"-14 X 1" ZINC PLATED SELF DRILLING SCREWS (A307 OR BETTER) THROUGH FAN BASE. SEE TABLE BELOW FOR QTY.
 - SECURE CURB TO ROOF FRAMING MEMBERS BY DRILLING 1/4" DIA PILOT HOLES IN CURB AT LOCATION SHOWN IN BOTTOM LEFT DIAGRAM. SEE TABLE BELOW FOR FASTENER TYPE AND QTY.

DESIGN PRESSURE: +200 / -120 PSF
LARGE MISSILE IMPACT RESISTANT.

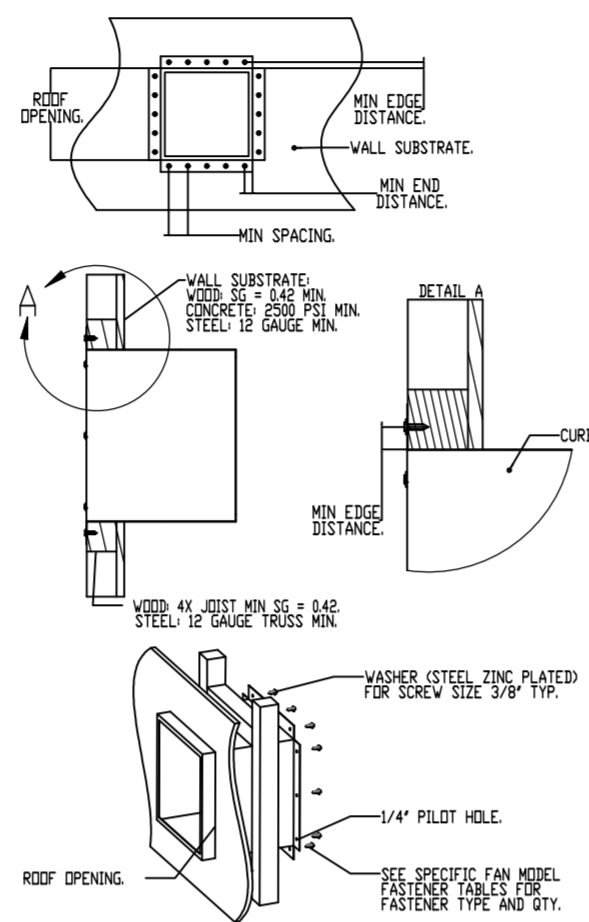
INSTALLATION FASTENER TYPES				
FAN TO CURB	WOOD (S.G = 0.42 MIN.)	STEEL (12 GAUGE MIN.)	CONCRETE (2500 PSI MIN. CRACKED CONCRETE)	
FASTENER	1/4"-14 X 1" SELF DRILLING SCREW (A307 OR BETTER)	3/8" DIA. ZINC PLATED LAG BOLT	1/4"-14 DRILL-FLEX SELF DRILLING SCREW	3/8" DIA. SS HILTI KWIK BOLT T2 EXPANSION ANCHOR
MINIMUM THREAD PENETRATION	N/A	2"	12 GAUGE	2-5/16"
MINIMUM EDGE DISTANCE	N/A	1-1/2"	3/8"	3"
MINIMUM END DISTANCE	N/A	2-5/8"	3/8"	4"
MINIMUM SPACING	N/A	1-1/2"	3/4"	7"

INSTALLATION FASTENER QTY												
FAN MODEL	CURB TO FAN (ROOF)			WOOD (ROOF)			STEEL (WALL)		CONCRETE (WALL)			
	PER SIDE	TOTAL	PER SIDE	TOTAL	PER SIDE	TOTAL	PER SIDE	TOTAL	PER SIDE			
MODULAR 1	2	2	8	4	3	14	4	3	14	3	2	10

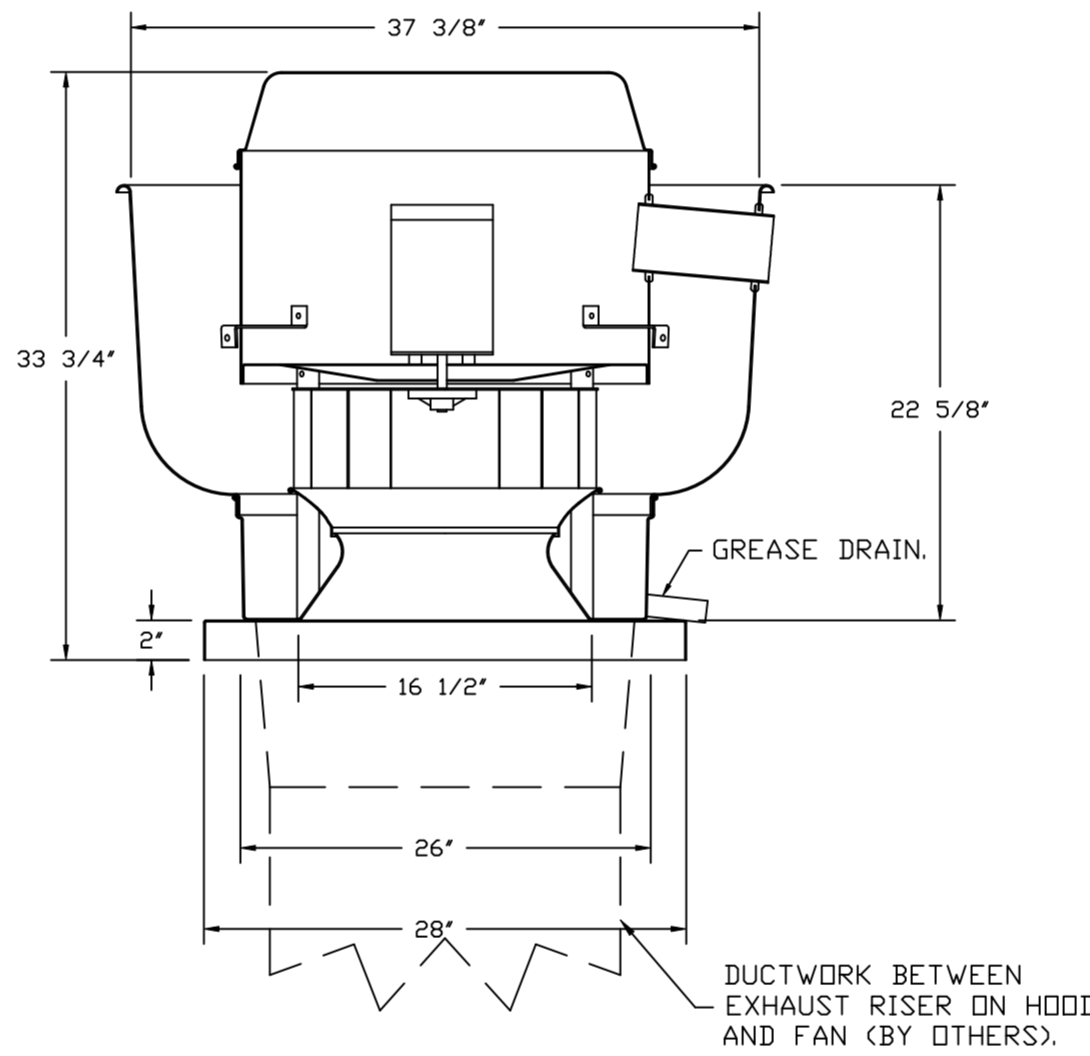
MIAMI-DADE COUNTY - CURB ROOF INSTALLATION GUIDE



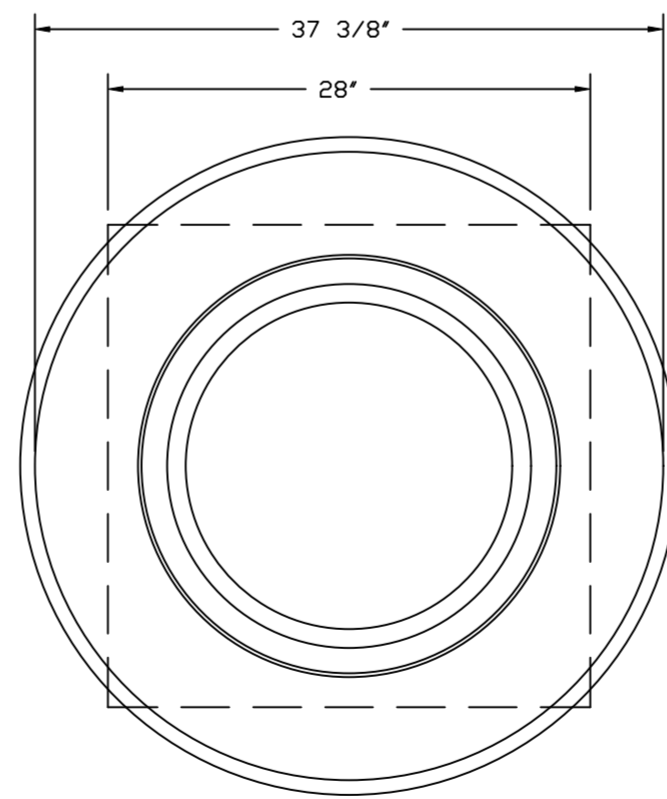
MIAMI-DADE COUNTY - WALL CURB INSTALLATION GUIDE



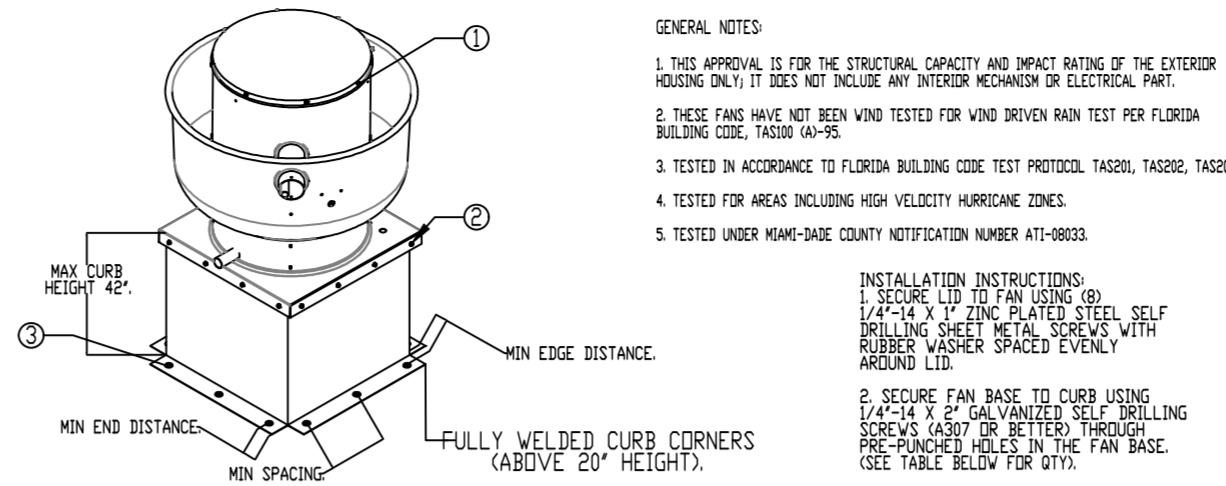
FAN #1 DUI80HFA - EXHAUST FAN (EF-1)



TOP VIEW



MIAMI-DADE NOA1 ALUMINUM UP-BLAST FANS



GENERAL NOTES:

- THIS APPROVAL IS FOR THE STRUCTURAL CAPACITY AND IMPACT RATING OF THE EXTERIOR HOUSING ONLY. IT DOES NOT INCLUDE ANY INTERIOR MECHANISM OR ELECTRICAL PART.
- THESE FANS HAVE NOT BEEN WIND TESTED FOR WIND DRIVEN RAIN TEST PER FLORIDA BUILDING CODE, TAS200, TAS202, TAS203.
- TESTED IN ACCORDANCE TO FLORIDA BUILDING CODE TEST PROTOCOL, TAS200, TAS202, TAS203.
- TESTED FOR AREAS INCLUDING HIGH VELOCITY HURRICANE ZONES.
- TESTED UNDER MIAMI-DADE COUNTY NOTIFICATION NUMBER AT-18033.

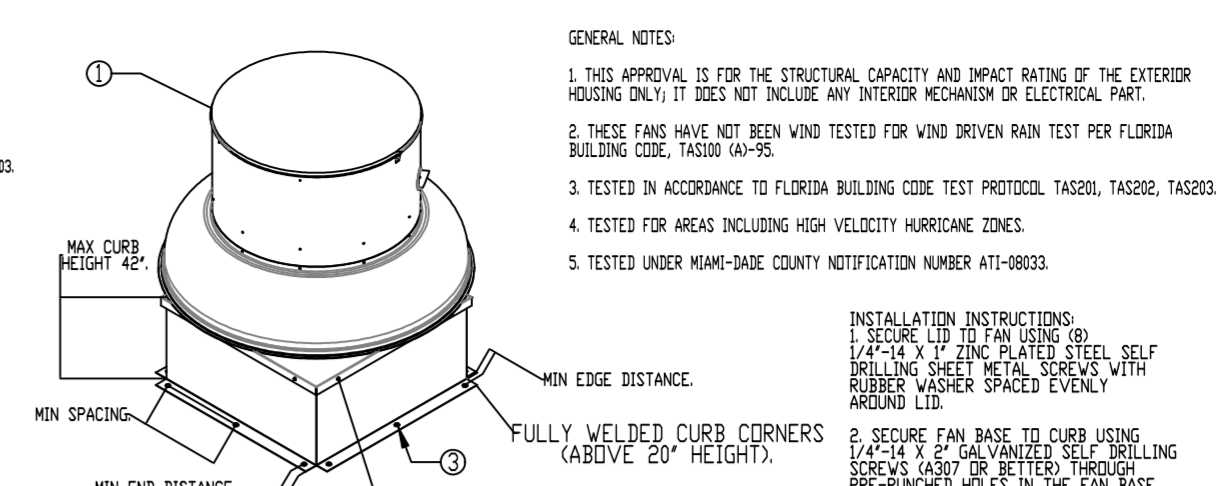
- INSTALLATION INSTRUCTIONS:**
- SECURE LID TO FAN USING 1/4"-14 X 1" ZINC PLATED SELF DRILLING SCREWS (A307 OR BETTER) WITH RUBBER WASHER SPACED EVENLY AROUND LID.
 - SECURE FAN BASE TO CURB USING 1/4"-14 X 1" ZINC PLATED SELF DRILLING SCREWS (A307 OR BETTER) THROUGH PRE-DRILLED HOLES IN THE FAN BASE. SEE TABLE BELOW FOR QTY.
 - SECURE CURB TO ROOF OR WALL BY DRILLING 1/4" DIA PILOT HOLES IN THE CURB FLANGE AT LOCATIONS SHOWN IN THE DIAGRAM. SEE TABLE BELOW FOR FASTENER TYPE. USE TABLE BELOW FOR FASTENER QTY.

CURB MATERIAL: 20" HIGH & LESS = 20 GA STEEL ABOVE 20" THRU 42" = 16 GA STEEL. DESIGN PRESSURE: +1500 / -1500 PSF. LARGE MISSILE IMPACT RESISTANT.

INSTALLATION FASTENER TYPES				
FAN TO CURB	WOOD (S.G = 0.42 MIN.)	STEEL (12 GAUGE MIN.)	CONCRETE (2500 PSI MIN. CRACKED CONCRETE)	
FASTENER	5/16"-18 X 2" SELF DRILLING SCREW (ELCO DRILL-FLEX OR BETTER)	3/8" DIA. ZINC PLATED LAG BOLT	1/4"-14 DRILL-FLEX SELF DRILLING SCREW	3/8" DIA. SS HILTI KWIK BOLT T2 EXPANSION ANCHOR
MINIMUM THREAD PENETRATION	N/A	2-1/2"	12 GAUGE	2"
MINIMUM EDGE DISTANCE	N/A	1-1/2"	3/8"	3"
MINIMUM END DISTANCE	N/A	2-5/8"	3/8"	3"
MINIMUM SPACING	N/A	1-1/2"	3/4"	5-1/2"

INSTALLATION FASTENER QTY												
FAN MODEL	CURB TO FAN (ROOF)			WOOD (ROOF)			STEEL (WALL)		CONCRETE (WALL)			
	PER SIDE	TOTAL	PER SIDE	TOTAL	PER SIDE	TOTAL	PER SIDE	TOTAL	PER SIDE			
DUI800	3	12	9	12	5	20	6	24	5	20	5	20

MIAMI-DADE NOA1 ALUMINUM DOWN-BLAST FANS



GENERAL NOTES:

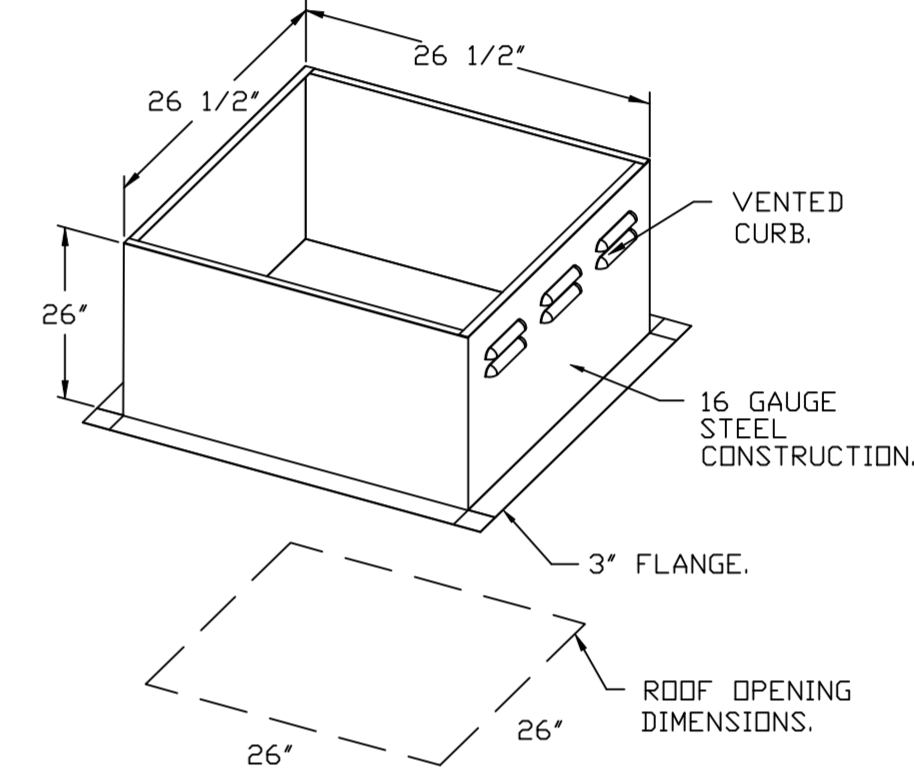
- THIS APPROVAL IS FOR THE STRUCTURAL CAPACITY AND IMPACT RATING OF THE EXTERIOR HOUSING ONLY. IT DOES NOT INCLUDE ANY INTERIOR MECHANISM OR ELECTRICAL PART.
- THESE FANS HAVE NOT BEEN WIND TESTED FOR WIND DRIVEN RAIN TEST PER FLORIDA BUILDING CODE, TAS200, TAS202, TAS203.
- TESTED IN ACCORDANCE TO FLORIDA BUILDING CODE TEST PROTOCOL, TAS200, TAS202, TAS203.
- TESTED FOR AREAS INCLUDING HIGH VELOCITY HURRICANE ZONES.
- TESTED UNDER MIAMI-DADE COUNTY NOTIFICATION NUMBER AT-18033.

- INSTALLATION INSTRUCTIONS:**
- SECURE LID TO FAN USING 1/4"-14 X 1" ZINC PLATED SELF DRILLING SCREWS (A307 OR BETTER) WITH RUBBER WASHER SPACED EVENLY AROUND LID.
 - SECURE FAN BASE TO CURB USING 1/4"-14 X 1" ZINC PLATED SELF DRILLING SCREWS (A307 OR BETTER) THROUGH PRE-DRILLED HOLES IN THE FAN BASE. SEE TABLE BELOW FOR QTY.
 - SECURE CURB TO ROOF OR WALL BY DRILLING 1/4" DIA PILOT HOLES IN THE CURB FLANGE AT LOCATIONS SHOWN IN THE DIAGRAM. SEE TABLE BELOW FOR FASTENER TYPE. USE TABLE BELOW FOR FASTENER QTY.

CURB MATERIAL: 20" HIGH & LESS = 20 GA STEEL ABOVE 20" THRU 42" = 16 GA STEEL. DESIGN PRESSURE: +1500 / -1500 PSF. LARGE MISSILE IMPACT RESISTANT.

INSTALLATION FASTENER TYPES				
FAN TO CURB	WOOD (S.G = 0.42 MIN.)	STEEL (12 GAUGE MIN.)	CONCRETE (2500 PSI MIN. CRACKED CONCRETE)	
FASTENER	5/16"-18 X 2" SELF DRILLING SCREW (ELCO DRILL-FLEX OR BETTER)	3/8" DIA. ZINC PLATED LAG BOLT	1/4"-14 DRILL-FLEX SELF DRILLING SCREW	3/8" DIA. SS HILTI KWIK BOLT T2 EXPANSION ANCHOR
MINIMUM THREAD PENETRATION	N/A	2-1/2"	12 GAUGE	2"
MINIMUM EDGE DISTANCE	N/A	1-1/2"	3/8"	3"
MINIMUM END DISTANCE	N/A	2-5/8"	3/8"	3"
MINIMUM SPACING	N/A	1-1/2"	3/4"	5-1/2"

INSTALLATION FASTENER QTY										
FAN MODEL	CURB TO FAN (ROOF)			WOOD (ROOF)			STEEL (WALL)		CONCRETE (WALL)	
	PER SIDE	TOTAL	PER SIDE	TOTAL	PER SIDE	TOTAL	PER SIDE	TOTAL	PER SIDE	
DR2	3	12	3	12	3	12	3	12	3	12



FEATURES:

- DIRECT DRIVE CONSTRUCTION (NO BELTS/PULLEYS).
- ROOF MOUNTED FANS.
- RESTAURANT MODEL.
- UL705 AND UL762 AND ULC-S645
- VARIABLE SPEED CONTROL.
- INTERNAL WIRING.
- THERMAL OVERLOAD PROTECTION (SINGLE PHASE).
- HIGH HEAT OPERATION 300°F (149°C).
- GREASE CLASSIFICATION TESTING.
- NEMA 3R SAFETY DISCONNECT SWITCH.

NORMAL TEMPERATURE TEST
EXHAUST FAN MUST OPERATE CONTINUOUSLY WHILE EXHAUSTING AIR AT 300°F (149°C) UNTIL ALL FAN PARTS HAVE REACHED THERMAL EQUILIBRIUM, AND WITHOUT ANY DETERIORATING EFFECTS TO THE FAN WHICH WOULD CAUSE UNSAFE OPERATION.

ABNORMAL FLARE-UP TEST
EXHAUST FAN MUST OPERATE CONTINUOUSLY WHILE EXHAUSTING BURNING GREASE VAPORS AT 600°F (316°C) FOR A PERIOD OF 15 MINUTES WITHOUT THE FAN BECOMING DAMAGED TO ANY EXTENT THAT COULD CAUSE AN UNSAFE CONDITION.

OPTIONS

- GREASE BOX.
- MIAMI DADE CERTIFICATION - NOA-1 ALUMINUM UPBLAST.
- 2 YEAR PARTS WARRANTY.

REVISIONS

DESCRIPTION	DATE:

www.captiveaire.com

Highwoods Group

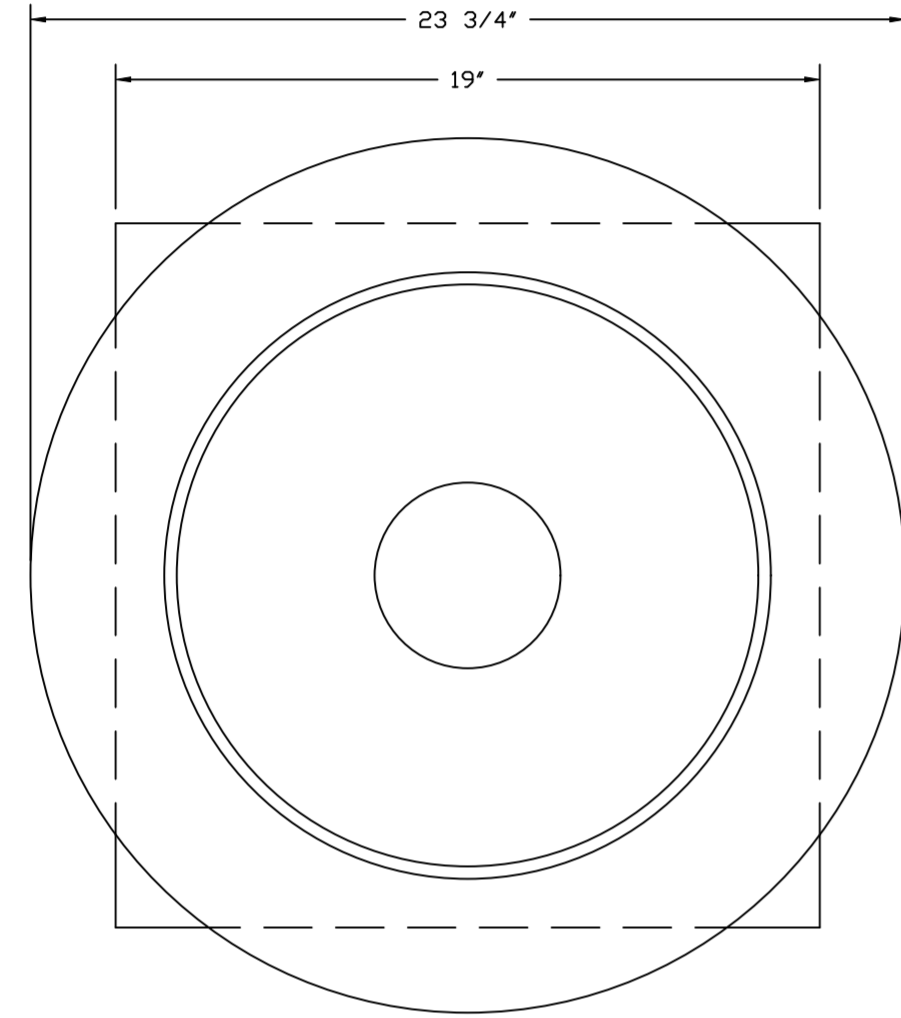
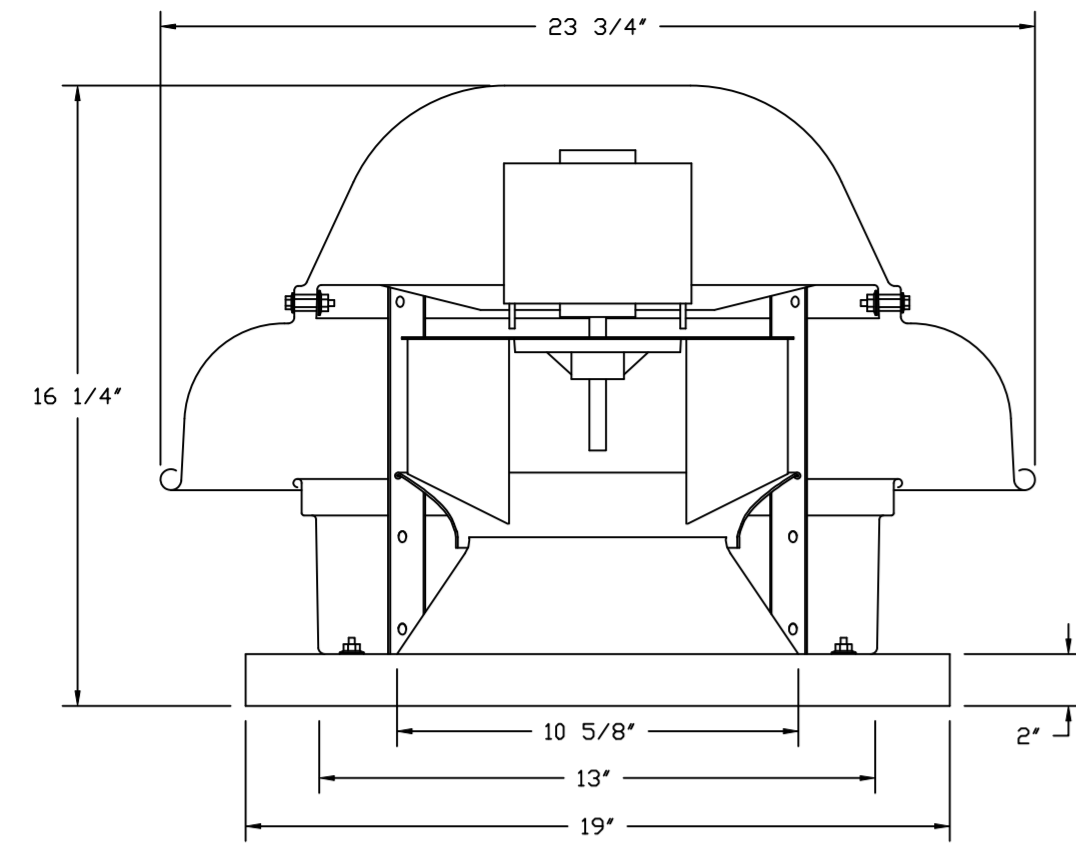
4641 Paragon Park Rd., Raleigh, NC 27616 PHONE: (919) 875-0420 FAX: (919) 875-0577 EMAIL: reg@0@captiveaire.com

CHIPOTLE WEST HILLSBORO #4437
DEERFIELD BEACH, FL, 33442

DATE: 4/16/2023
DWG.#: 5950436
DRAWN BY: JMB-40
SCALE: 3/4" = 1'-0"
MASTER DRAWING

SHEET NO.
3

FAN #2_DR12HFA - EXHAUST FAN (CF-22)



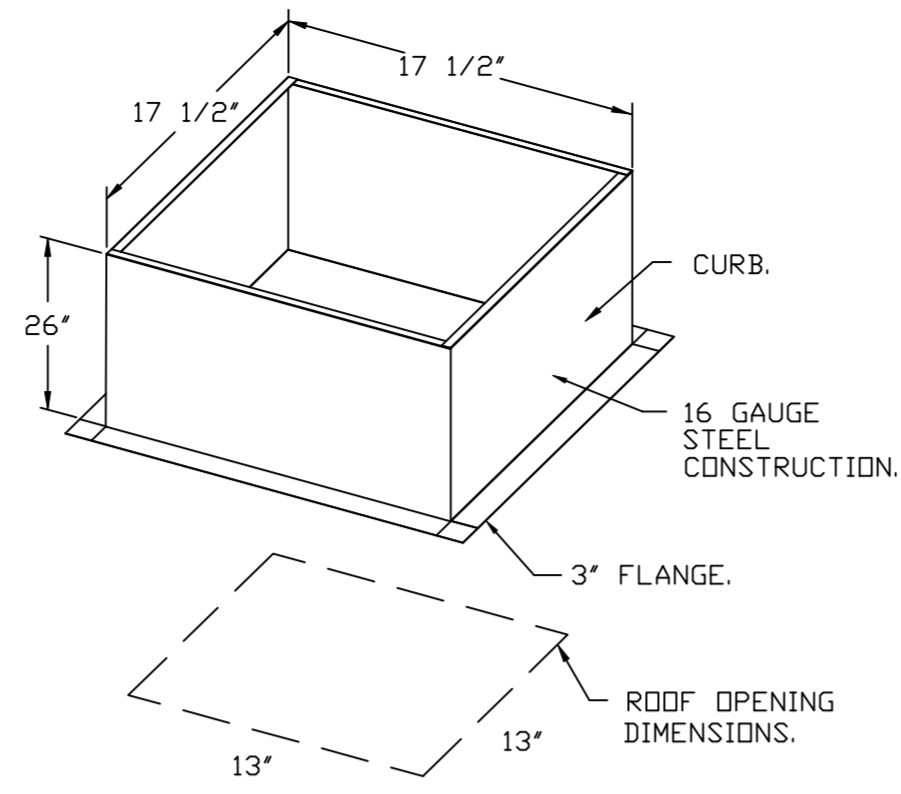
TOP VIEW

FEATURES:

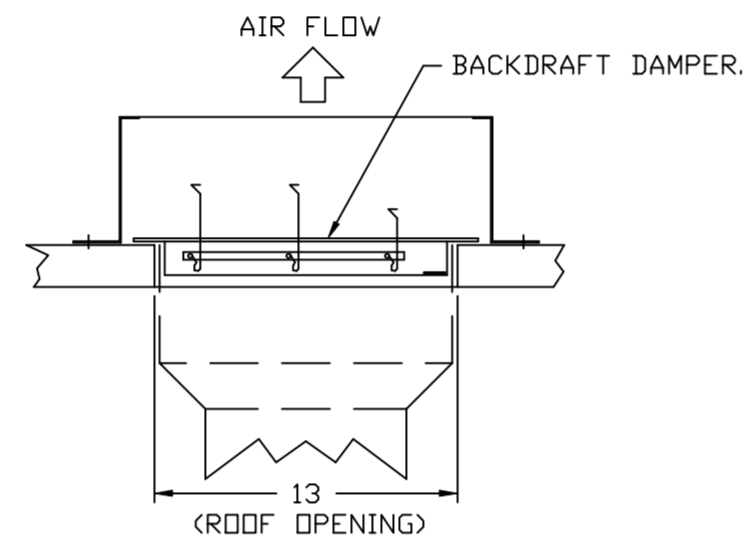
- DIRECT DRIVE CONSTRUCTION (NO BELTS/PULLEYS).
- ROOF MOUNTED FANS.
- UL705.
- SAFETY DISCONNECT.
- STANDARD BIRD SCREEN.
- SPEED CONTROL.
- THERMAL OVERLOAD PROTECTION (SINGLE PHASE).

OPTIONS:

- I 12-BDD DAMPER.
- ECM WIRING PACKAGE - MANUAL OR 0-10VDC REFERENCE SPEED CONTROL.
- RTC- (THERMISTOR), CCW ROTATION.
- MIAMI DADE CERTIFICATION - NDA-1 ALUMINUM DOWNBLAST 10.
- 2 YEAR PARTS WARRANTY.

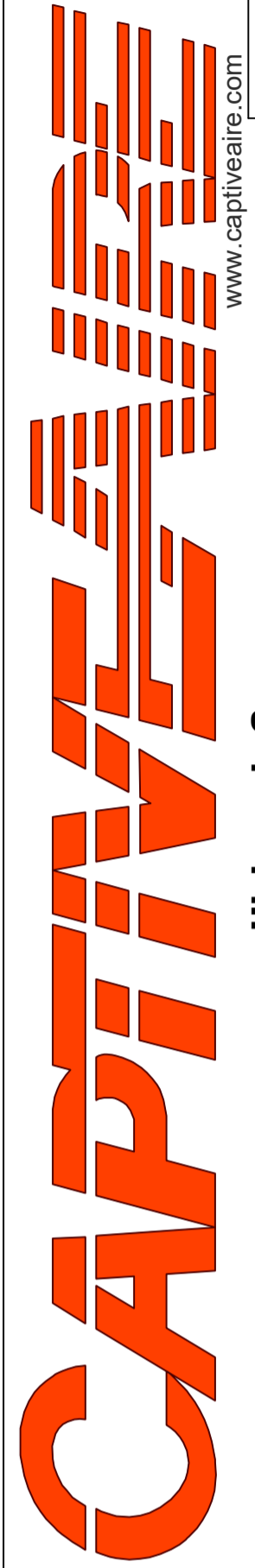
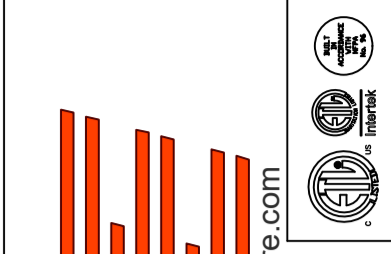


BACKDRAFT DAMPER INSTALLATION



REVISIONS

DESCRIPTION	DATE:



www.captiveair.com
 4641 Paragon Park Rd., Raleigh, NC, 27616 PHONE: (919) 875-0420 FAX: (919) 875-0577 EMAIL: reg10@captiveair.com

CHIPOTLE WEST HILLSBORO #4437
 DEERFIELD BEACH, FL, 33442

DATE: 4/16/2023

DWG.#: 5950436

DRAWN BY: JMB-40

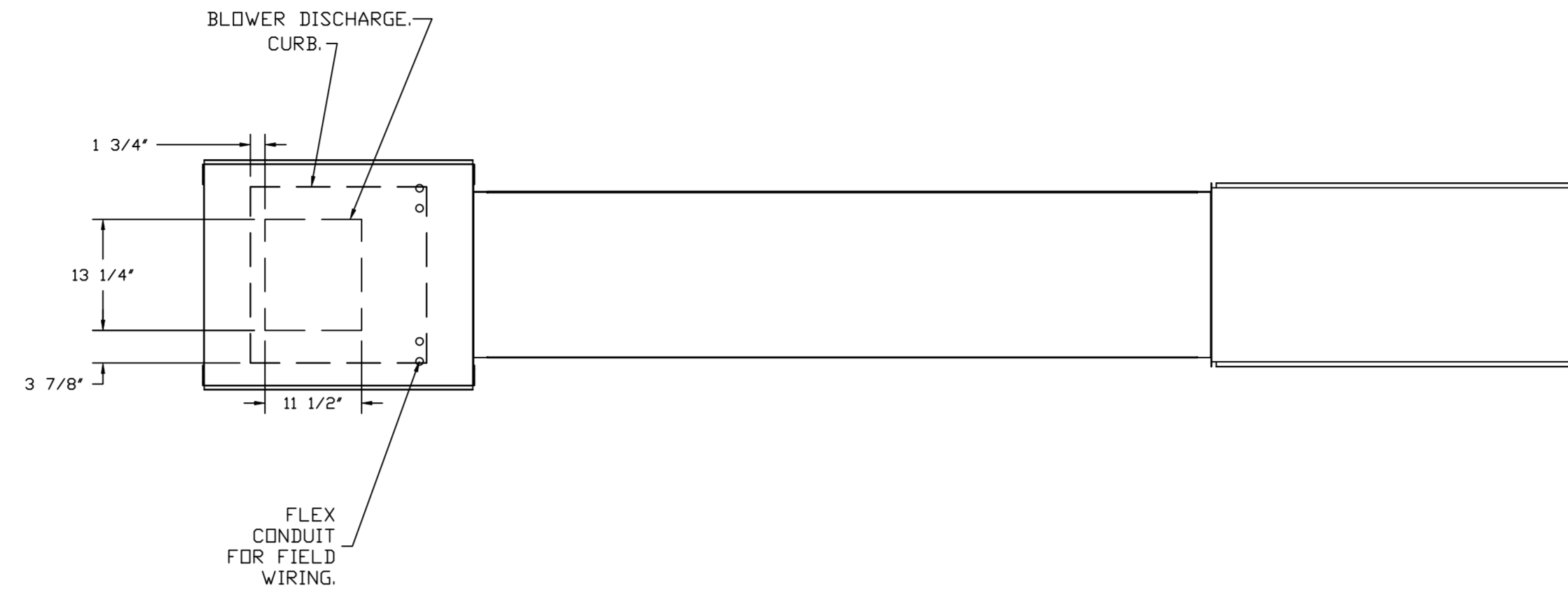
SCALE: 3/4" = 1'-0"

MASTER DRAWING

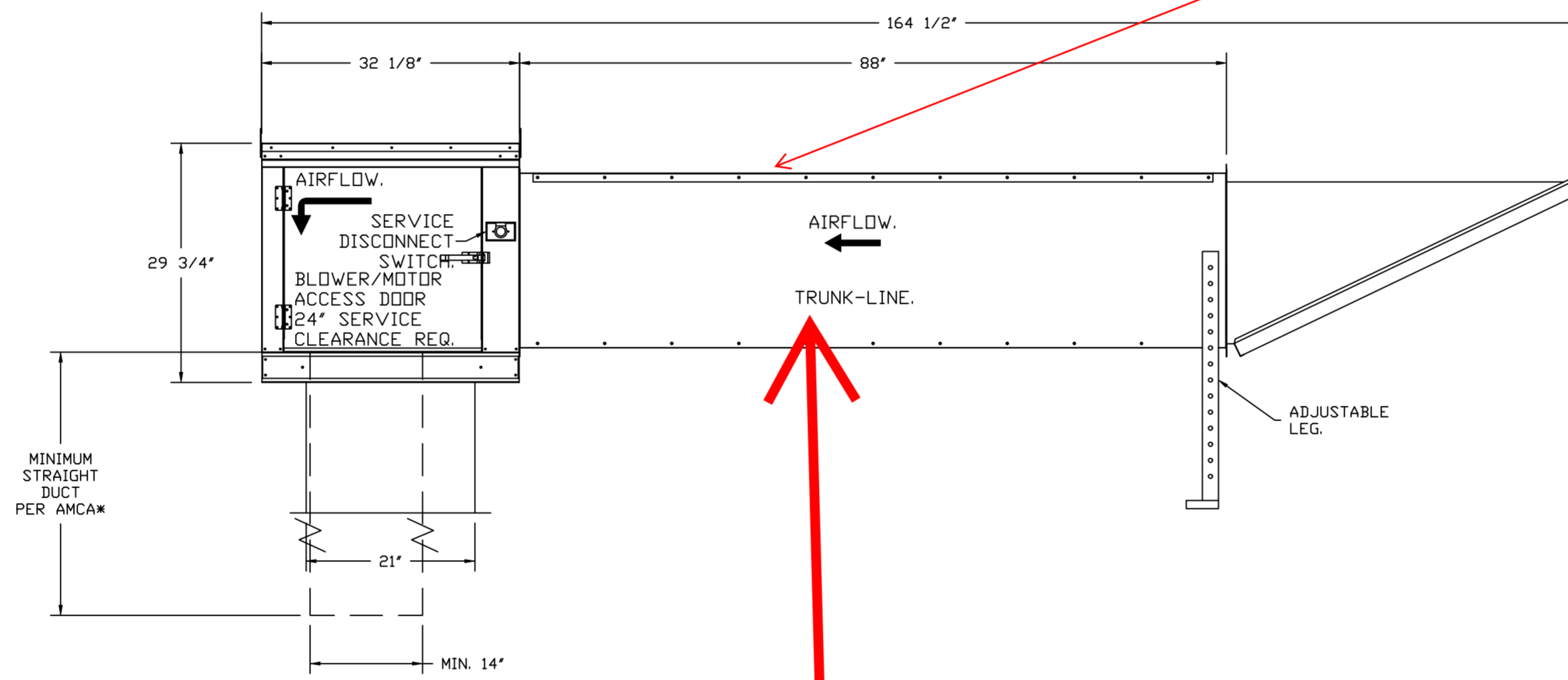
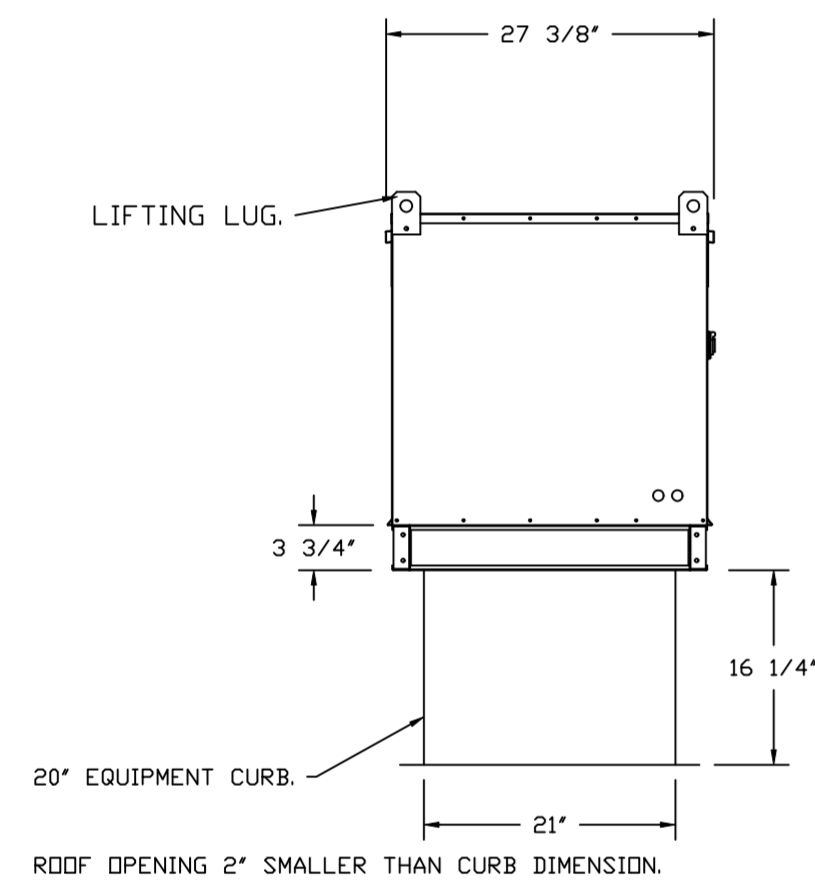
SHEET NO. 4

- FAN #3 A1-15D - SUPPLY FAN (MAU-1)
 1. UNTEMPERED SUPPLY UNIT WITH 15" MIXED FLOW DIRECT DRIVE FAN IN SIZE #1 HOUSING.
 2. TRUNKLINE W/INTAKE HODD W/EZ FILTERS.
 3. DOWN DISCHARGE - AIR FLOW RIGHT -> LEFT.
 4. DOWN DISCHARGE CONSTRUCTION FOR SIZE 1 UNTEMPERED DIRECT DRIVE AHUS.
 5. GRAVITY BACK DRAFT DAMPER, 16" WIDE X 18" HIGH, STANDARD GALVANIZED CONSTRUCTION, 1 1/4" REAR FLANGE, FOR SIZE 1 UNTEMPERED FAN HOUSING (S1B).
 6. MIAMI DADE IMPACT AND WIND LOAD CERTIFICATION +30 / -130 PSF - MIAMI DADE COUNTY PRODUCT CONTROL APPROVED.
 7. HINGED DOUBLE WALL INSULATED DOOR ASSEMBLY (BURNER/BLOWER SECTION).
 8. 2 YEAR PARTS WARRANTY

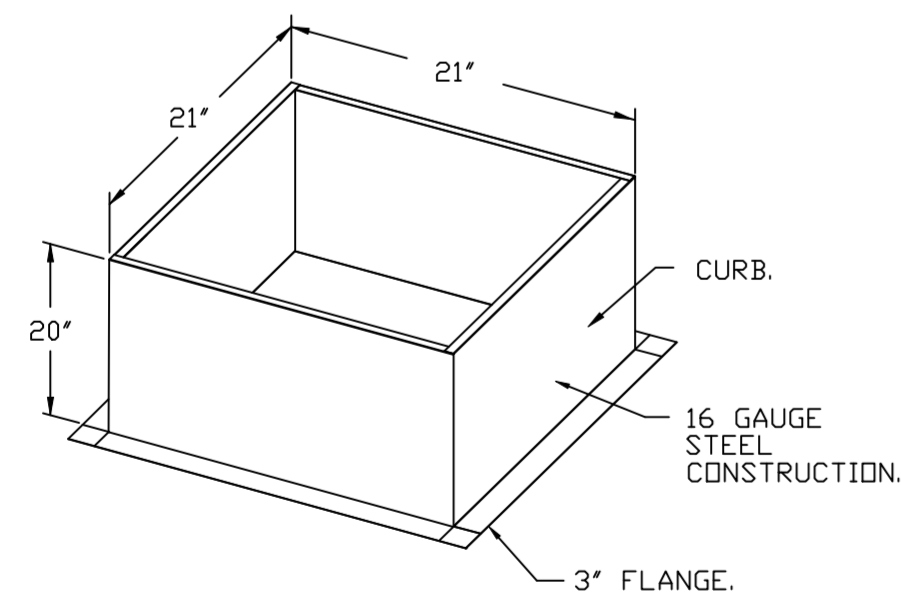
*NOTE: SUPPLY DUCT MUST BE INSTALLED TO MEET SMACNA STANDARDS. A MINIMUM STRAIGHT DUCT LENGTH MUST BE MAINTAINED DOWNSTREAM OF UNIT DISCHARGE AS OUTLINED IN AMCA PUBLICATION 201. WHEN USING RECTANGULAR DUCTWORK, ELBOWS MUST BE RADIUS THROAT, RADIUS BACK WITH TURNING VANES. FLEXIBLE DUCTWORK AND SQUARE THROAT/SQUARE BACK ELBOWS SHOULD NOT BE USED. ANY TRANSITION AND/OR TURNS IN THE DUCTWORK WILL CAUSE SYSTEM EFFECT. SYSTEM EFFECT WILL DRASTICALLY INCREASE STATIC PRESSURE AND REDUCE AIRFLOW. DO NOT RELY ON UNIT TO SUPPORT DUCT IN ANY WAY. FAILURE TO PROPERLY SIZE DUCTWORK MAY CAUSE SYSTEM EFFECTS AND REDUCE PERFORMANCE OF THE EQUIPMENT. SUGGESTED STRAIGHT DUCT SIZE IS 14" X 14".



The trunkline should be removed as we do not need exposed ductwork on the roof.



SDLA NOTE: ENGINEER TO VERIFY IF TRUNK-LINE NEEDED



REVISIONS	
DESCRIPTION	DATE

www.captiveair.com

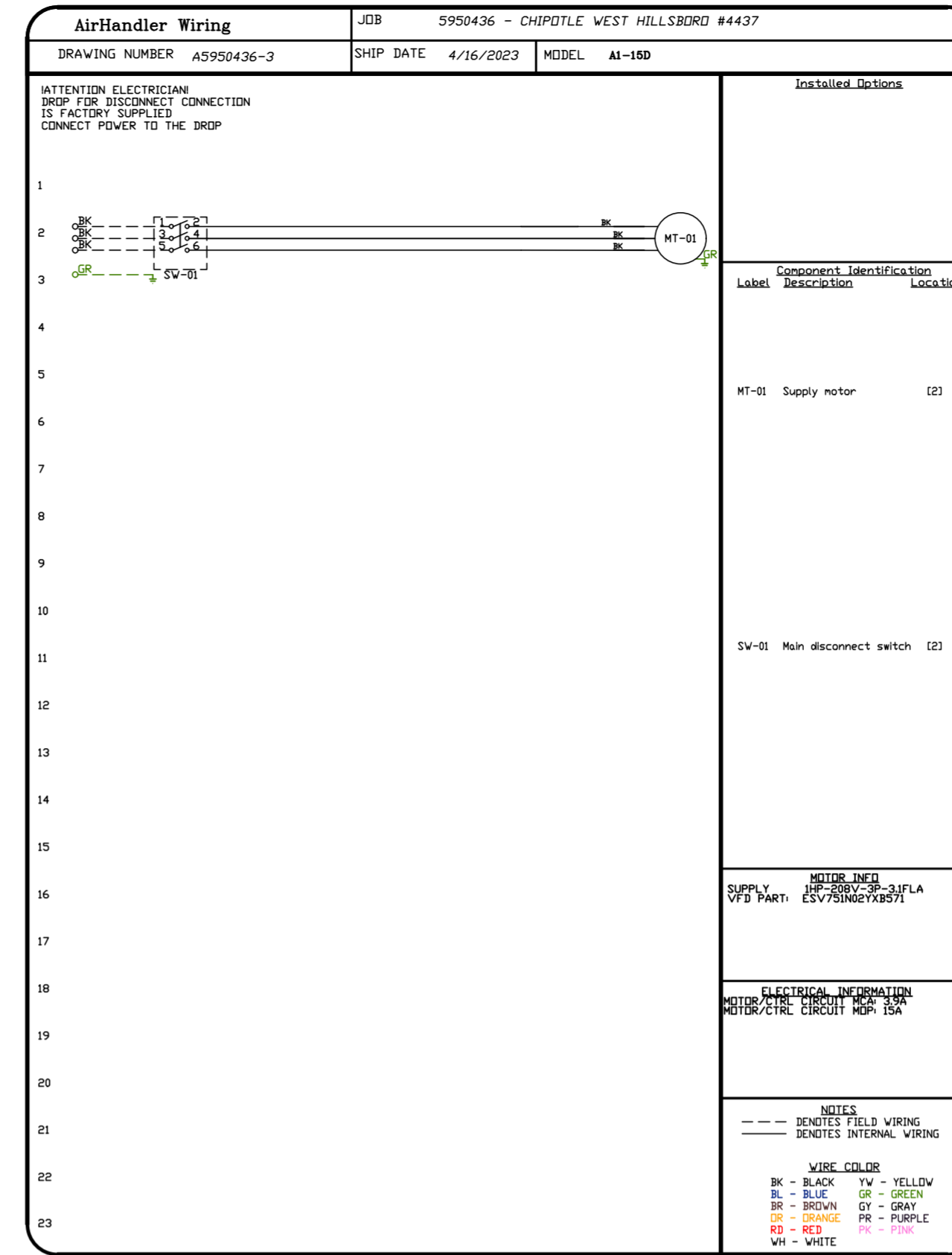
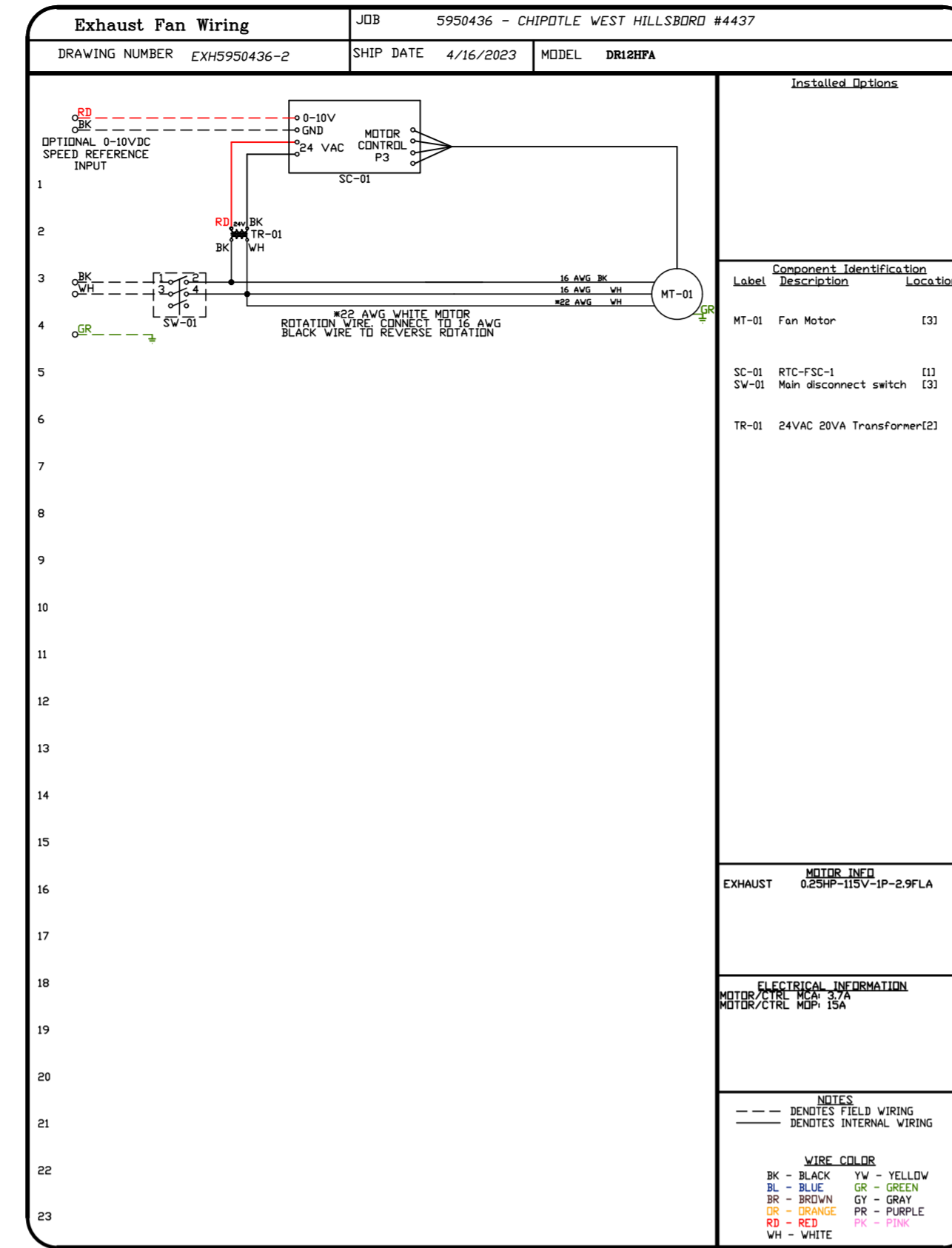
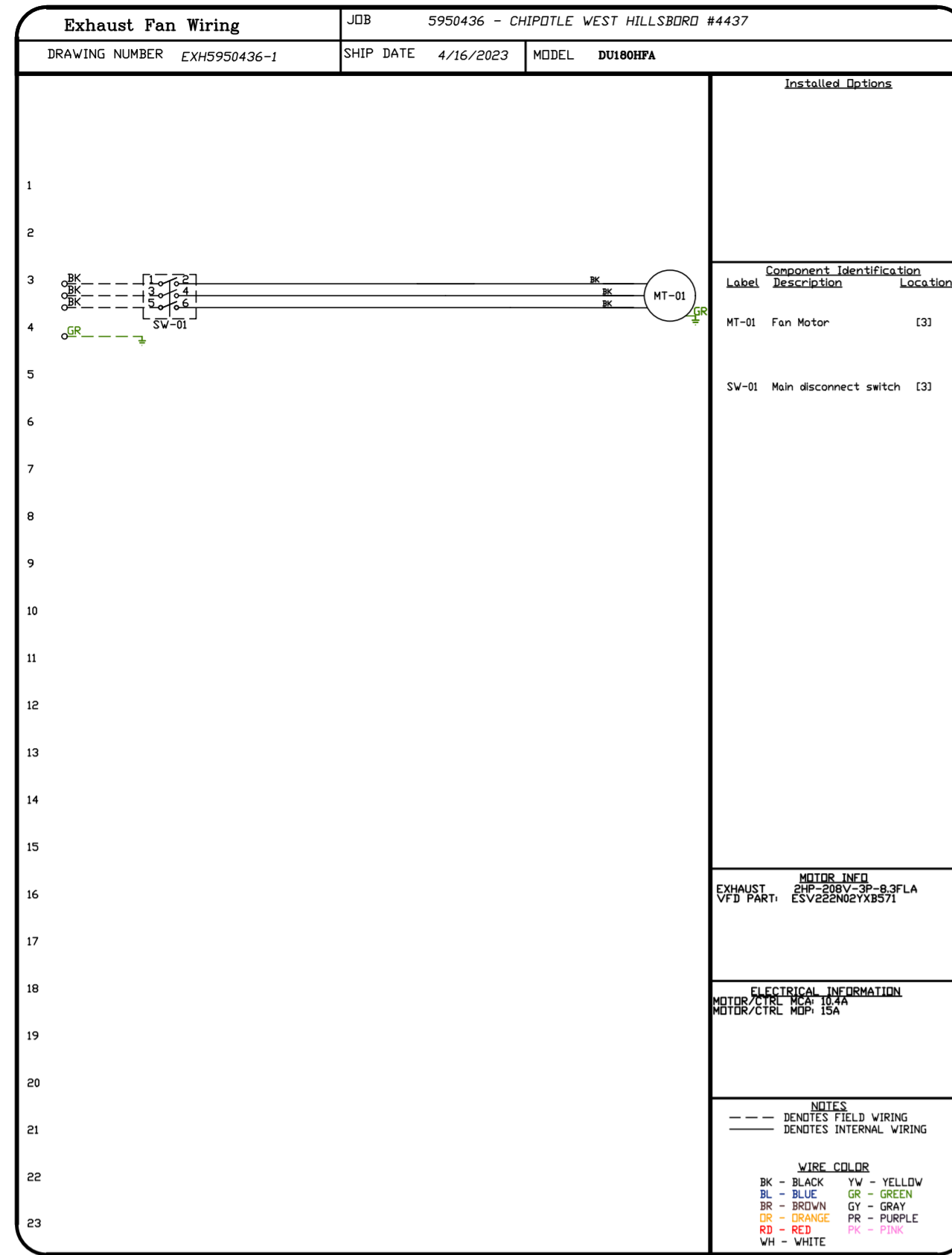
Highwoods Group

4641 Paragon Park Rd., Raleigh, NC, 27616 PHONE: (919) 875-0420 FAX: (919) 875-0577 EMAIL: reg10@captiveair.com

CHIPOTLE WEST HILLSBORO #4437
 DEERFIELD BEACH, FL, 33442

DATE: 4/16/2023
 DWG.#: 5950436
 DRAWN BY: JMB-40
 SCALE: 3/4" = 1'-0"
 MASTER DRAWING

SHEET NO.
 5



REVISIONS	
DESCRIPTION	DATE:

www.captiveair.com

Highwoods Group

4641 Paragon Park Rd., Raleigh, NC, 27616 PHONE: (919) 875-0420 FAX: (919) 875-0577 EMAIL: reg40@captiveair.com

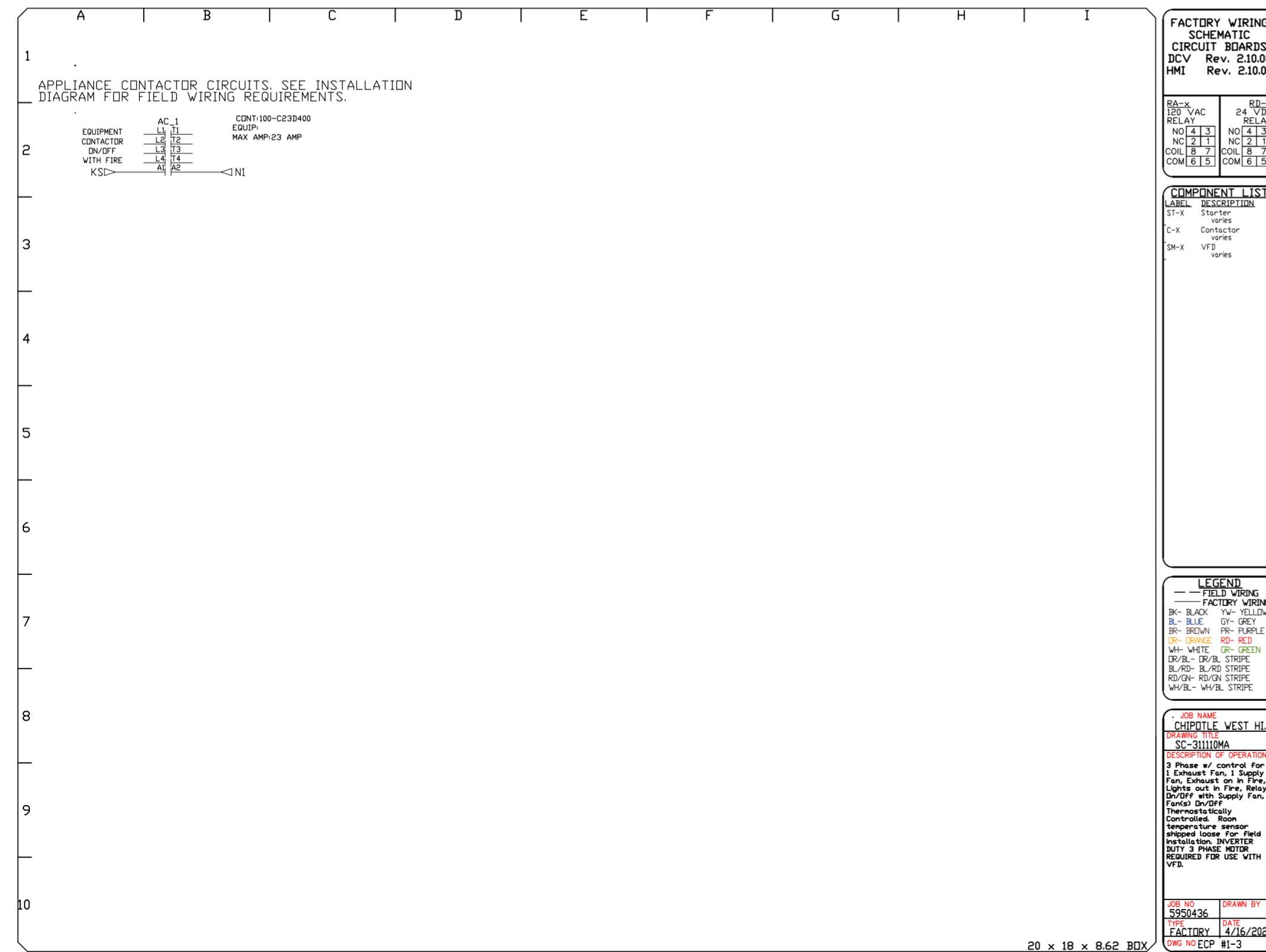
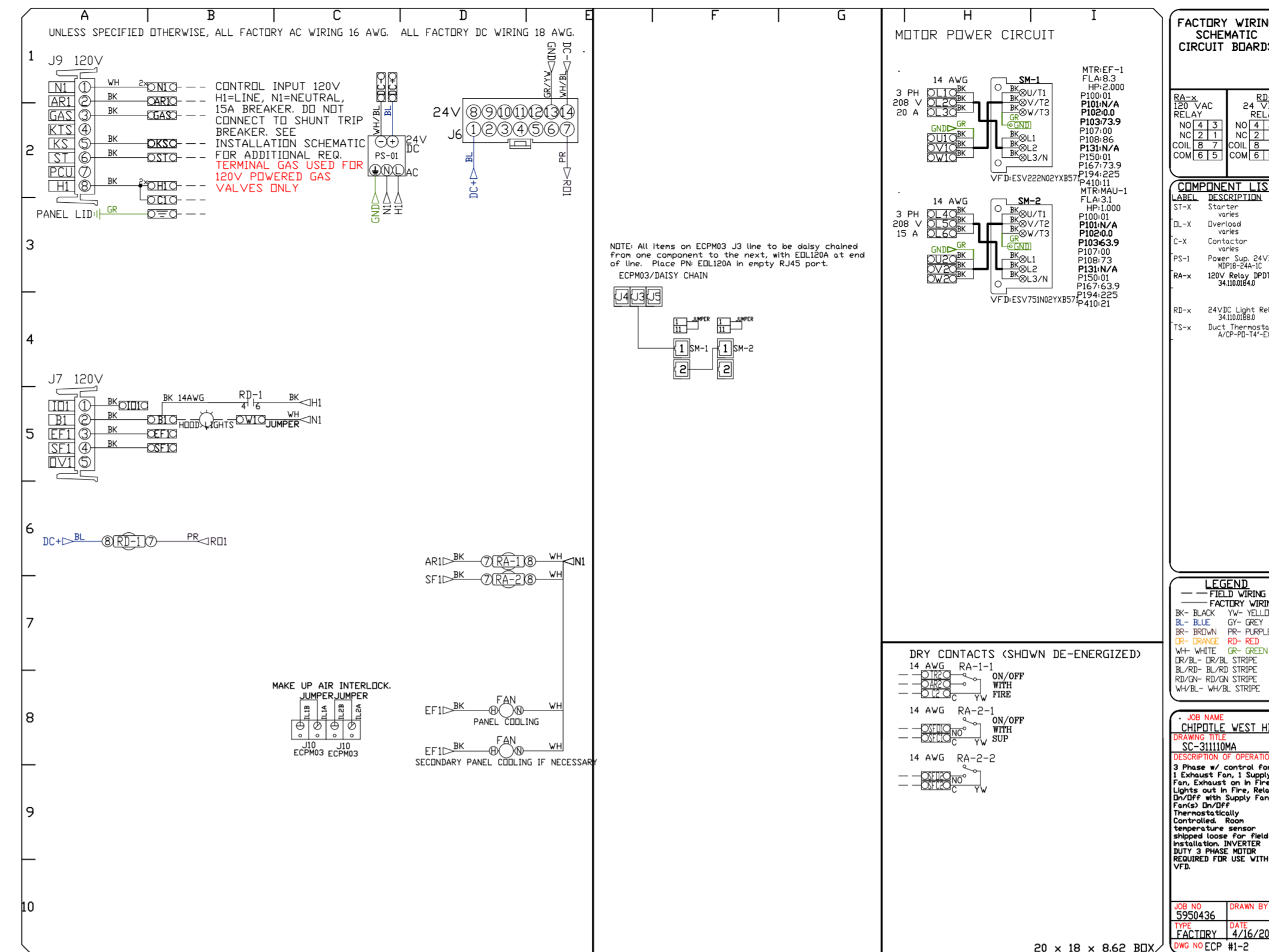
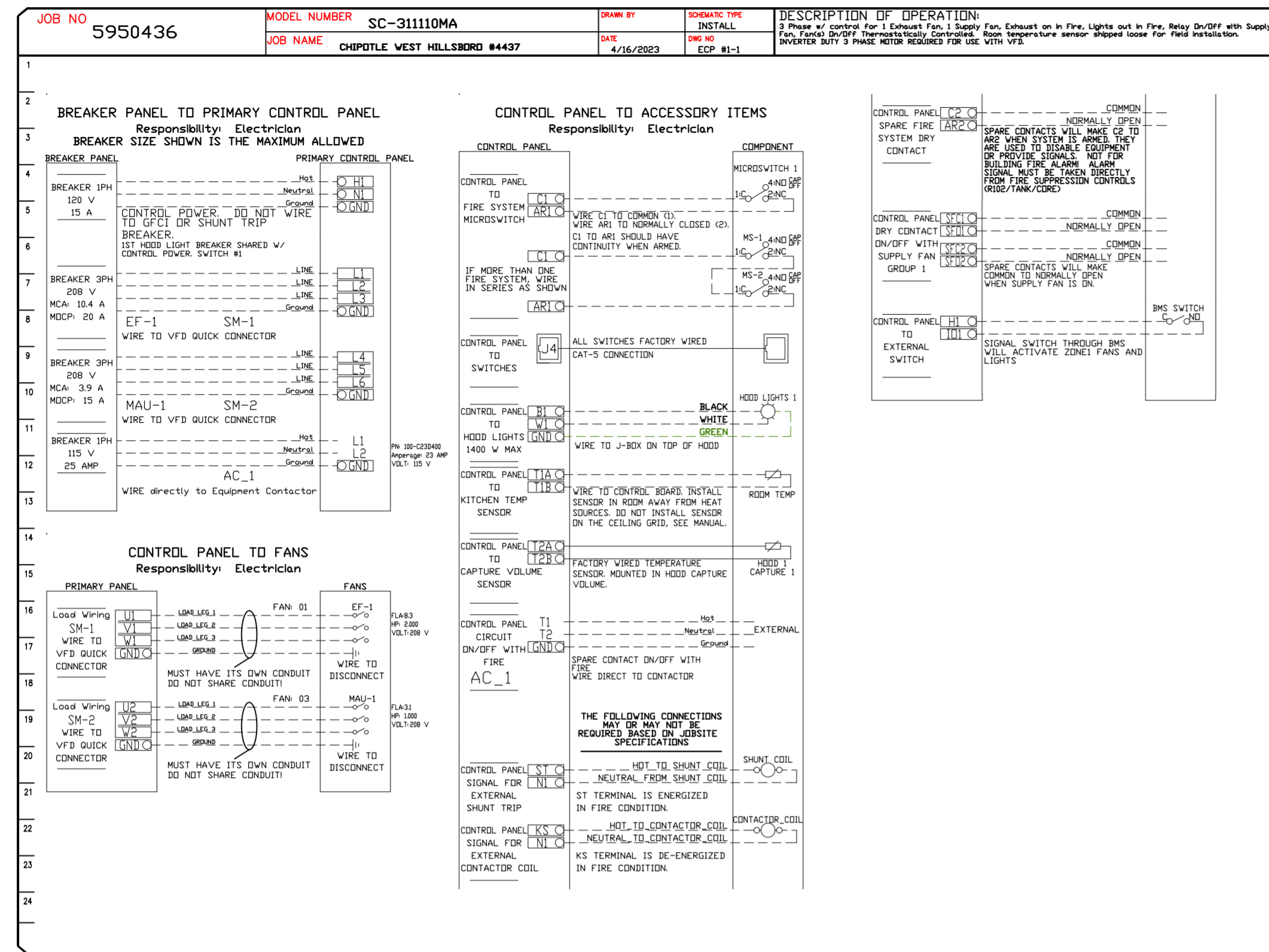
CHIPOTLE WEST HILLSBORO #4437
 DEERFIELD BEACH, FL, 33442

DATE: 4/16/2023
 DWG.#: 5950436
 DRAWN BY: JMB-40
 SCALE: 3/4" = 1'-0"
 MASTER DRAWING

SHEET NO.
 6

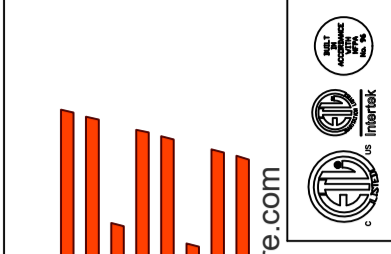
ELECTRICAL PACKAGE - JOB#5950436

NO	TAG	PACKAGE #	LOCATION	SWITCHES		OPTION	FANS CONTROLLED					
				LOCATION	QUANTITY		FAN TAG	TYPE	#	HP	VOLT	FLA
1		SC-311110MA	UTILITY CABINET RIGHT	UTILITY CABINET RIGHT HOOD # 1	1 LIGHT 1 FAN	SMART CONTROLS THERMOSTATIC CONTROL W/ RELAY ON/OFF WITH SUPPLY	EF-1	EXHAUST	3	2.000	208	8.3



REVISIONS

NO.	DESCRIPTION	DATE



CAPTIVE

Highwoods Group

4641 Paragon Park Rd., Raleigh, NC 27616 PHONE: (919) 875-0420 FAX: (919) 875-0577 EMAIL: reg@captivewire.com

CHIPOTLE WEST HILLSBORO #4437
 DEERFIELD BEACH, FL, 33442

DATE: 4/16/2023

DWG.#: 5950436

DRAWN BY: JMB-40

SCALE: 3/4" = 1'-0"

MASTER DRAWING

SHEET NO. 7