

Report By:

National TAB
1329 E. KEMPER ROAD
SUITE 4210
CINCINNATI, OH 45246



Report: TAB REPORT
Function: Test, Adjust, & Balance
Date: 08/22/2023

PROJECT
Starbucks (Turlock, CA)

3085 N. Tegner Road

Turlock, CA 95380

Client

IC Refrigeration
2216 Rockefeller Dr.

Ceres, CA 95307

National TAB

Project: Starbucks (Turlock, CA)

Table Of Contents

Section	Page #
AHU/RTU	3
FAN - Exhaust	5
GRD Layout	7

National TAB

Project: Starbucks (Turlock, CA)

System/Unit: AHU/RTU



Asset: RTU-1

AREA:BOH

Unit Data		
	Design	Actual
MFG	TRANE	YORK
Serial Num	-	N2A3352188
Model Num	YSJ150A3	ZJ150N18R2A1BAA1A2
Configuration	VERTICAL	VERTICAL
Num OA Filters 1	-	1
OA Filter Size 1	-	25X25
Num PreFilter 1	-	4
PreFilter Size 1	-	20X24X2

Test Data		
	Design	Actual
SF CFM	4700	4588
SF RPM	-	1138
RA CFM	4500	4377
OA CFM	200	211
RL Voltage	208	212/211/211
RL Amperage	-	13.2/13.3/13.5
OA Damper Position	-	CLOSED
Brake Horse Power	2.7	4.9

Motor Data		
	Design	Actual
Motor MFG	-	BALDOR RELIANCE
Frame	-	184T
Horsepower	-	5
Motor Rpm	-	1750
Phase	3	3
Rated Voltage	208	208-230/460
Rated Amperage	-	13.5-13/6.5
Service Factor	-	1.15

Performance Data		
	Design	Actual
MA Plenum SP	-	-0.91"
Fan Discharge SP	-	0.82"
Total ESP	0.8	1.73"
Fan Total SP	-	2.37"

Drive Data		
	Design	Actual
Motor Sheave Size	-	1VP56
Motor Bore Size	-	1-1/8"
Motor Sheave SetPt	-	1 TURN OPEN
Fan Sheave Size	-	8"
Fan Sheave Bore	-	1"
Belt CL Distance	-	20"
Num of Belts	-	1
Belt Size	-	BX56

Completed By: Zack Eismin on 08/21/2023

National TAB

Project: Starbucks (Turlock, CA)

AHU/RTU



Diffuser Supply (GRD)

RTU-1/BOH

Asset							
Asset Name	Location	Type	Size	DESIGN CFM	CFM(1)	FINAL CFM	% to design
1-1	BOH	A	12	500	391	478	95.6
1-2	DRIVE THRU	A	12	500	442	459	91.8
1-3	BOH	A	12	500	674	532	106.4
1-4	BOH	A	12	500	689	521	104.2
1-5	BOH	A	12	500	560	498	99.6
1-6	SALES	A	10	400	239	379	94.8
1-7	SALES	A	12	450	381	421	93.6
1-8	BOH	A	12	500	429	471	94.2
1-9	SALES	A	12	450	390	431	95.8
1-10	RESTROOM	B	8	100	135	107	107.0
1-11	BOH	A	8	200	141	192	96.0
1-12	BOH	A	8	100	133	99	99.0
Total				4700	4604	4588	97.62%

Diffuser Ret/Exh (GRD)

RTU-1/BOH

Asset								
Asset Name	Type	Size	DESIGN CFM	AK	CFM(1)	CFM(2)	FINAL CFM	% to design
R1-1	C	16	1700	1	1591	1621	1621	95.4
R1-2	C	16	1500	1	1442	1431	1431	95.4
R1-3	C	16	1500	1	1511	1398	1398	93.2
Total			4700		4544	4450	4450	94.68%

National TAB

Project: Starbucks (Turlock, CA)

System/Unit: FAN - Exhaust



Asset: EF-1

AREA:RESTROOM

Unit Data		
	Design	Actual
MFG	GREENHECK	GREENHECK
Model Num	G-098-VG	G-098-4-VG-1-19-X
Serial Num	-	21632680
Type	CRE DNBLAST	DOWNBLAST

Test Data		
	Design	Actual
CFM	150	157
RL Voltage	-	117
RL Amperage	-	0.29
Total ESP	0.5	0.27"

Motor Data		
	Design	Actual
Motor MFG	-	VARI-GREEN
Frame	-	NL
Horsepower	0.25	0.25
Motor Rpm	-	1750
Phase	1	1
Voltage (rated)	115	115
Amperage (rated)	-	2.85
Service Factor	-	1.25

Completed By: Zack Eismin on 08/21/2023

National TAB

Project: Starbucks (Turlock, CA)

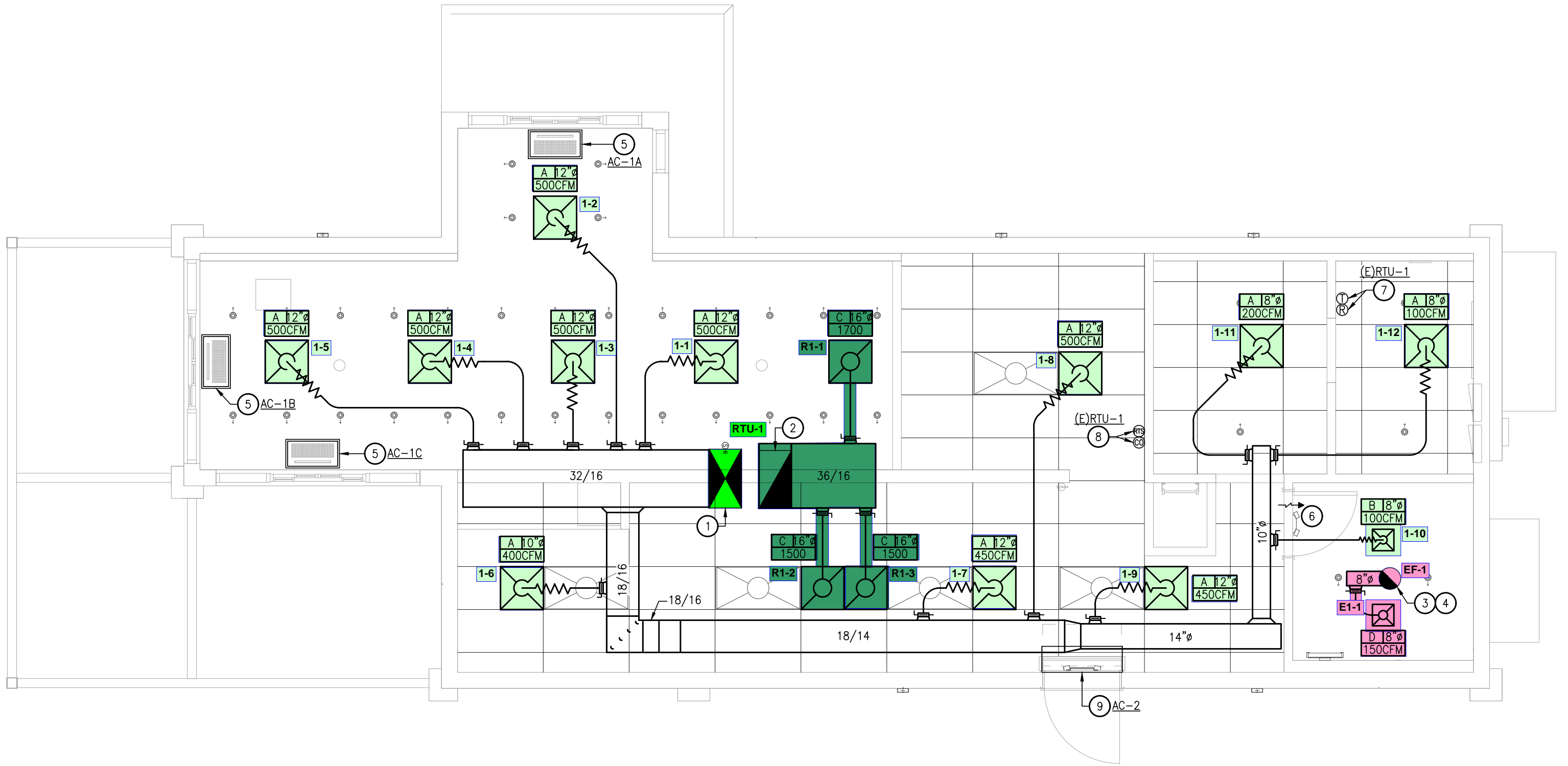
FAN - Exhaust



Diffuser Ret/Exh (GRD)

EF-1/RESTROOM

Asset								
Asset Name	Type	Size	DESIGN CFM	AK	CFM(1)	CFM(2)	FINAL CFM	% to design
E1-1	D	8	150					-
Total			150		0	0	0	0%



1
M-101

MECHANICAL DESIGN PLAN
SCALE: 1/4" = 1'-0"

