

HOOD INFORMATION - JOB#5009972

HOOD NO	TAG	MODEL	MANUFACTURER	LENGTH	MAX COOKING TEMP	TYPE	APPLIANCE DUTY	DESIGN CFM/FT	TOTAL EXH CFM	EXHAUST PLENUM RISER(S)						MUA CFM	AC CFM	HOOD CONSTRUCTION	HOOD CONFIG		
										WIDTH	LENG	HEIGHT	DIA	CFM	VEL				SP	END TO END	ROW
1	HDIL	5424 EX-2-ACSPSP-F	ECON-AIR	9' 0"	450 DEG	I	MEDIUM	197	1775			4'	14'	1775	1660	-0.432'	1420	550	430 SS WHERE EXPOSED	LEFT	ALONE
2	HDIR	5424 EX-2-ACSPSP-F	ECON-AIR	9' 0"	600 DEG	I	HEAVY	197	1775			4'	14'	1775	1660	-0.432'	1278	500	430 SS WHERE EXPOSED	RIGHT	ALONE

PATENT NUMBERS

AC-PSP (UNITED STATES) - US PATENT 7963830 B2.
 AC-PSP WALL (CANADA) - CA PATENT 2820509.
 AC-PSP ISLAND (CANADA) - CA PATENT 2520330.

HOOD INFORMATION

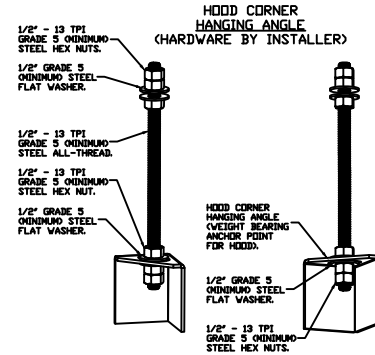
HOOD NO	TAG	FILTER(S)				LIGHT(S)				UTILITY CABINET(S)				FIRE SYSTEM PIPING	HOOD HANGING WEIGHT				
		TYPE	QTY	HEIGHT	LENGTH	EFFICIENCY @ 7 MICRONS	QTY	TYPE	WIRE GUARD	LOCATION	SIZE	FIRE SYSTEM				ELECTRICAL	SWITCHES		
1	HDIL	SS BAFFLE WITH HANDLES	6	16"	16"	30%	4	L55 SERIES E26	NO									YES	522 LBS
2	HDIR	SS BAFFLE WITH HANDLES	6	16"	16"	30%	4	L55 SERIES E26	NO									YES	522 LBS

HOOD OPTIONS

HOOD NO	TAG	OPTION	
1	HDIL	LEFT QUARTER END PANEL	23' TOP WIDTH, 0' BOTTOM WIDTH, 23' HIGH 430 SS. SENSOR-CV.
2	HDIR	RIGHT QUARTER END PANEL	23' TOP WIDTH, 0' BOTTOM WIDTH, 23' HIGH 430 SS. SENSOR-CV.

PERFORATED SUPPLY PLENUM(S)

HOOD NO	TAG	PDS	LENGTH	WIDTH	HEIGHT	TYPE	RISER(S)				
							WIDTH	LENG	DIA	CFM	SP
1	HDIL	Front	108'	24'	6'	MUA	10"	28"		710	0.197'
						MUA	10"	28"		710	0.197'
						AC	8"	16"		275	0.071'
						AC	8"	16"		275	0.071'
2	HDIR	Front	108'	24'	6'	MUA	10"	28"		639	0.161'
						MUA	10"	28"		639	0.161'
						AC	8"	16"		250	0.071'
						AC	8"	16"		250	0.071'

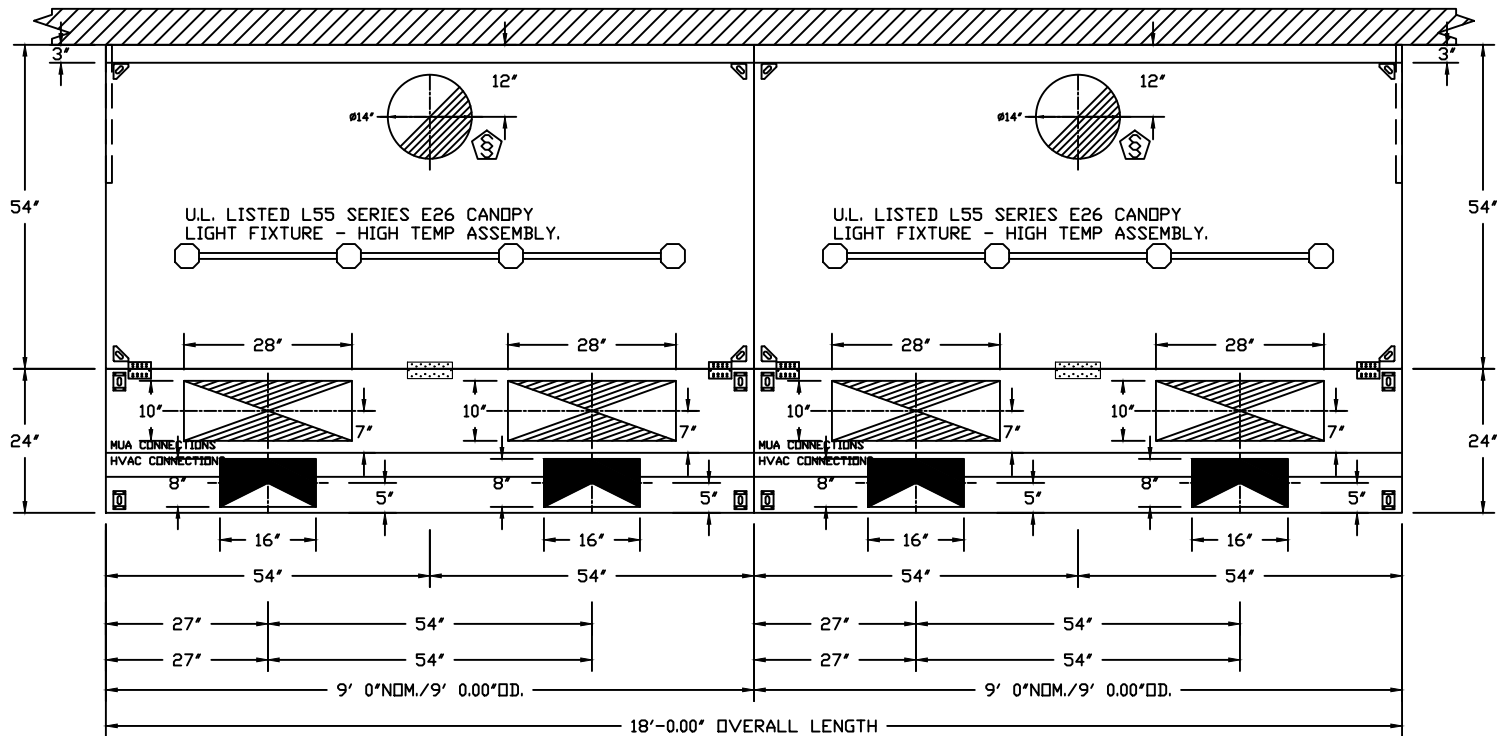


ASSEMBLY INSTRUCTIONS

HANGING ANGLE MUST BE SUPPORTED WITH 1/2" - 13 TPI GRADE 5 (MINIMUM) ALL-THREAD. SANDWICH HANGING ANGLES AND CEILING ANCHOR POINTS WITH 1/2" GRADE 5 (MINIMUM) STEEL FLAT WASHERS AND 1/2" - 13 TPI GRADE 5 (MINIMUM) HEX NUTS AS SHOWN. MUST USE DOUBLED HEX NUT CONFIGURATION BENEATH HOOD HANGING ANGLES AND ABOVE CEILING ANCHORS. MAINTAIN 1/4" OF EXPOSED THREADS BENEATH BOTTOM HEX NUT. TORQUE ALL HEX NUTS TO 57 FT-LBS.



JOB Genki Ramen (DAKLEY, OH)	
LOCATION Cincinnati, OH, 45209	
DATE 1/20/2022	JOB # 5009972
DWG # 1	DRAWN BY jcirilli
REV.	SCALE 3/8" = 1'-0"



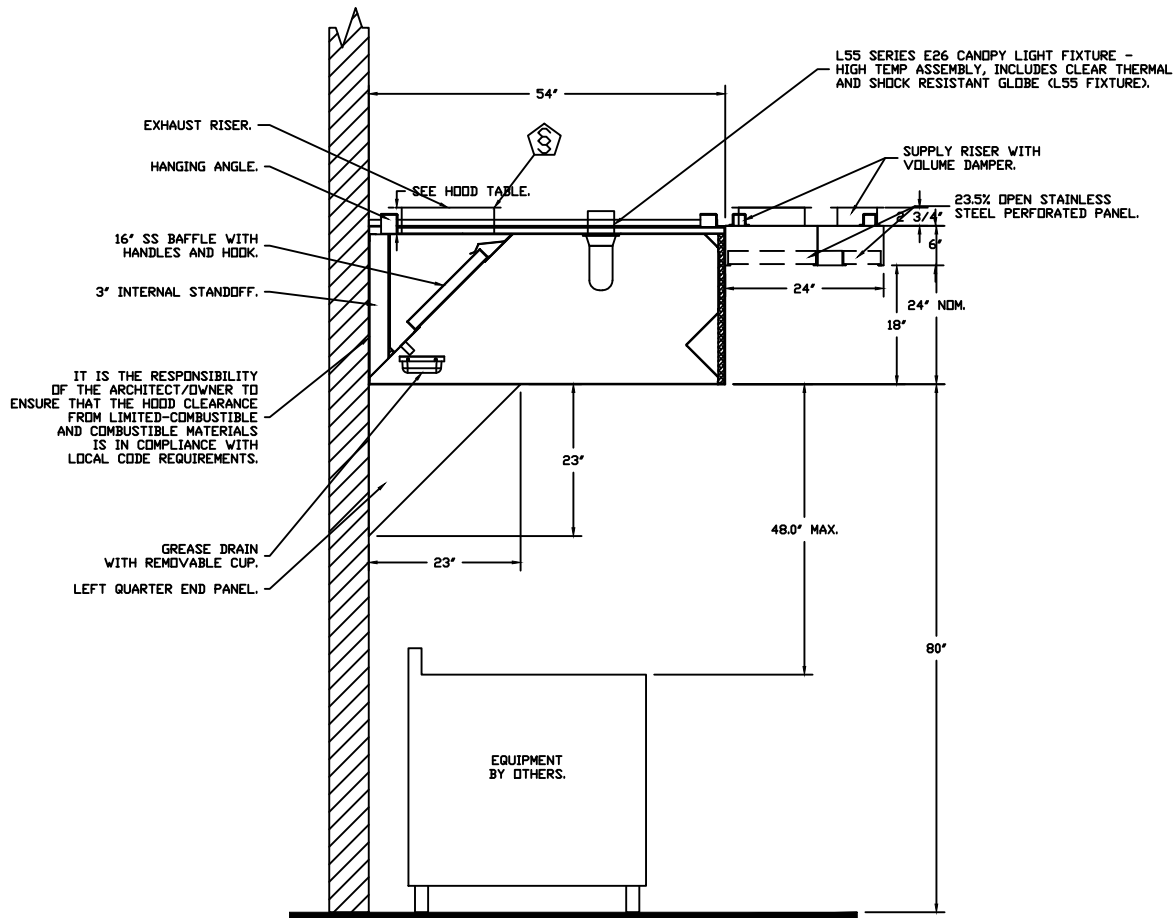
PLAN VIEW - HOOD #1 (HD1L)
 9' 0.00" LONG 5424EX-2-ACPSP-F

PLAN VIEW - HOOD #2 (HD1R)
 9' 0.00" LONG 5424EX-2-ACPSP-F

ACPSP SHIPS LOOSE FOR FIELD INSTALLATION ACPSP SHIPS LOOSE FOR FIELD INSTALLATION



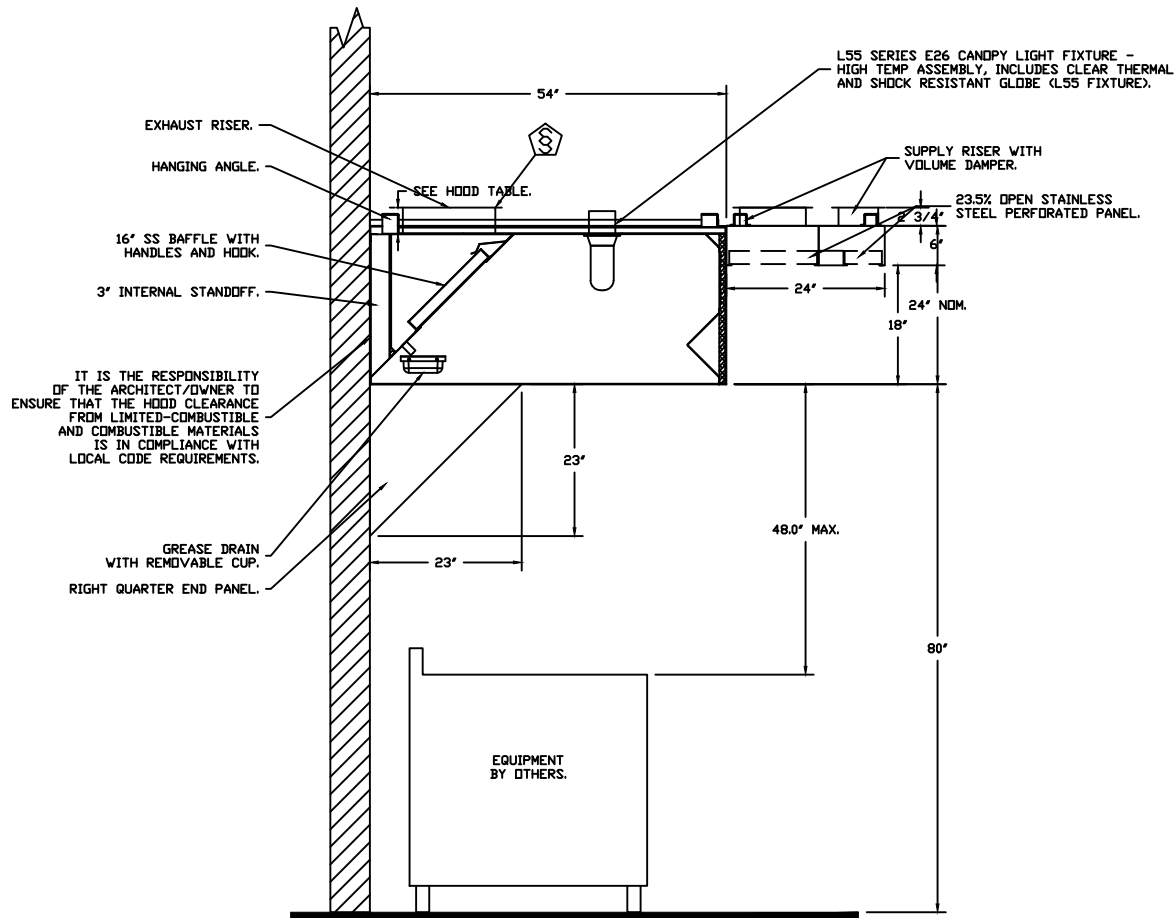
JOB Genki Ramen (DAKLEY, OH)	
LOCATION Cincinnati, OH, 45209	
DATE 1/20/2022	JOB # 5009972
DWG # 2	DRAWN BY jcirilli
REV.	SCALE 3/8" = 1'-0"



**SECTION VIEW - MODEL 5424EX-2-ACPSP-F
HOOD - #1 (HD1L)**



<i>JOB</i> Genki Ramen (DAKLEY, OH)	
<i>LOCATION</i> Cincinnati, OH, 45209	
<i>DATE</i> 1/20/2022	<i>JOB #</i> 5009972
<i>DWG #</i> 3	<i>DRAWN BY</i> jcirilli
<i>REV.</i>	<i>SCALE</i> 3/8' = 1'-0'



SECTION VIEW - MODEL 5424EX-2-ACPSP-F
HOOD - #2 (HD1R)



JOB Genki Ramen (DAKLEY, OH)	
LOCATION Cincinnati, OH, 45209	
DATE 1/20/2022	JOB # 5009972
DWG # 4	DRAWN BY jcirilli
REV.	SCALE 3/8" = 1'-0"

EXHAUST FAN INFORMATION - JOB#5009972

FAN UNIT NO	TAG	QTY	FAN UNIT MODEL #	MANUFACTURER	CFM	ESP	RPM	MOTOR ENCL	HP	BHP	PHASE	VOLT	FLA	DISCHARGE VELOCITY	WEIGHT (LBS)	SDNES
1	KEF1	1	EADU240H	ECON-AIR	3550	1.300	824	DDP,PREMIUM	3.000	1.5430	3	208	10.2	807 FPM	310	15.6

MUA FAN INFORMATION - JOB#5009972

FAN UNIT NO	TAG	QTY	FAN UNIT MODEL #	BLOWER	HOUSING	MIN CFM	DESIGN CFM	ESP	RPM	MOTOR ENCL	HP	BHP	PHASE	VOLT	FLA	MCA	MOCF	WEIGHT (LBS)	SDNES
2	KSF1	1	EA2-D.250-20D	20MF-2-MOD	A2-D.250	2000	2698	0.421	1127	DDP,PREMIUM	2.000	0.8090	3	208	6.1	7.7A	15A	633	9.3

GAS FIRED MAKE-UP AIR UNIT(S)

FAN UNIT NO	TAG	INPUT BTUs	OUTPUT BTUs	TEMP RISE	REQUIRED INPUT GAS PRESSURE	GAS TYPE	BURNER EFFICIENCY(%)
2	KSF1	170366	156737	55°F	7 IN. W.C. - 14 IN. W.C.	NATURAL	92

FAN OPTIONS

FAN UNIT NO	TAG	QTY	DESCRIPTION
1	KEF1	1	GREASE BDX
		1	EXHAUST FAN HEAT BAFFLE
		1	FAN BASE CERAMIC SEAL - INSTALLED AT PLANT - FOR GREASE DUCTS
		1	2 YEAR PARTS WARRANTY
2	KSF1	1	LDW FIRE START
		1	INLET PRESSURE GAUGE, 0-35"
		1	MANIFOLD PRESSURE GAUGE, -5 TO 15" WC
		1	MOTORIZED BACKDRAFT DAMPER FOR A2-D HOUSING - MEETS AMCA CLASS 1A RATING
		1	SEPARATE 120V WIRING PACKAGE (REQUIRED AND USED ONLY FOR DCV OR PREWIRE WITH VFD) - THREE PHASE ONLY
		1	SIZE 2 DIRECT FIRED HEATER LOW CFM PROFILE PACKAGE - USED ON HEATERS UNDER 2500 CFM
1	2 YEAR PARTS WARRANTY		

FAN ACCESSORIES

FAN UNIT NO	TAG	EXHAUST			SUPPLY			
		GREASE CUP	GRAVITY DAMPER	WALL MOUNT	SIDE DISCHARGE	GRAVITY DAMPER	MOTORIZED DAMPER	WALL MOUNT
1	KEF1	YES						
2	KSF1					YES		

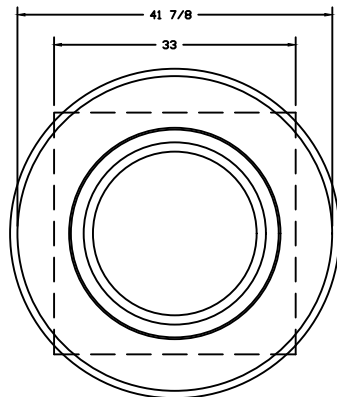
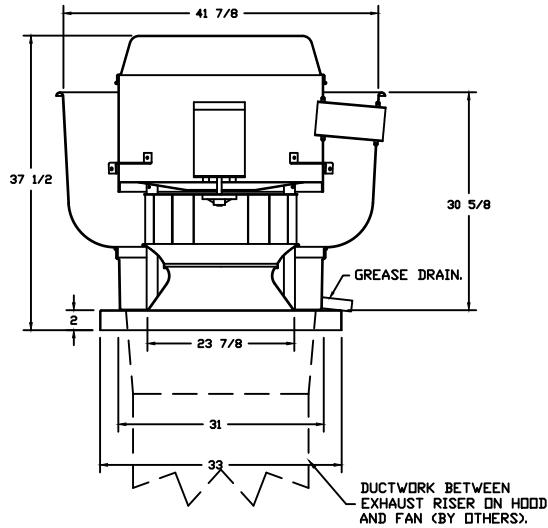
CURB ASSEMBLIES

NO	ON FAN	TAG	WEIGHT	ITEM	SIZE
1	# 1	KEF1	48 LBS	CURB	31.500"W X 31.500"L X 24.000"H ALONG LENGTH, RIGHT VENTED HINGED.
2	# 2	KSF1	76 LBS	CURB	31.000"W X 79.000"L X 14.000"H ALONG WIDTH, RIGHT INSULATED.



JOB Genki Ramen (DAKLEY, OH)	
LOCATION Cincinnati, OH, 45209	
DATE 1/20/2022	JOB # 5009972
DWG # 5	DRAWN BY jcirilli
REV.	SCALE 3/8' = 1'-0'

FAN #1 EADU240H - EXHAUST FAN (KEF1)



TOP VIEW

FEATURES:

- DIRECT DRIVE CONSTRUCTION (NO BELTS/PULLEYS).
- ROOF MOUNTED FANS.
- RESTAURANT MODEL.
- UL705 AND UL762 AND ULC-S645
- VARIABLE SPEED CONTROL.
- INTERNAL WIRING.
- THERMAL OVERLOAD PROTECTION (SINGLE PHASE).
- HIGH HEAT OPERATION 300°F (149°C).
- GREASE CLASSIFICATION TESTING.
- NEMA 3R SAFETY DISCONNECT SWITCH.

NORMAL TEMPERATURE TEST

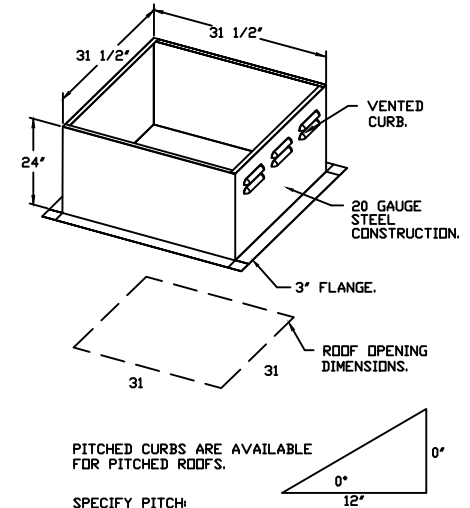
EXHAUST FAN MUST OPERATE CONTINUOUSLY WHILE EXHAUSTING AIR AT 300°F (149°C) UNTIL ALL FAN PARTS HAVE REACHED THERMAL EQUILIBRIUM, AND WITHOUT ANY DETERIORATING EFFECTS TO THE FAN WHICH WOULD CAUSE UNSAFE OPERATION.

ABNORMAL FLARE-UP TEST

EXHAUST FAN MUST OPERATE CONTINUOUSLY WHILE EXHAUSTING BURNING GREASE VAPORS AT 600°F (316°C) FOR A PERIOD OF 15 MINUTES WITHOUT THE FAN BECOMING DAMAGED TO ANY EXTENT THAT COULD CAUSE AN UNSAFE CONDITION.

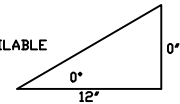
OPTIONS

- GREASE BOX.
- EXHAUST FAN HEAT BAFFLE.
- FAN BASE CERAMIC SEAL - INSTALLED AT PLANT - FOR GREASE DUCTS.
- 2 YEAR PARTS WARRANTY.



PITCHED CURBS ARE AVAILABLE FOR PITCHED ROOFS.

SPECIFY PITCH:
EXAMPLE: 7/12 PITCH = 30° SLOPE.



JOB Genki Ramen (DAKLEY, OH)	
LOCATION Cincinnati, OH, 45209	
DATE 1/20/2022	JOB # 5009972
DWG # 6	DRAWN BY jcirilli
REV.	SCALE 3/8" = 1'-0"

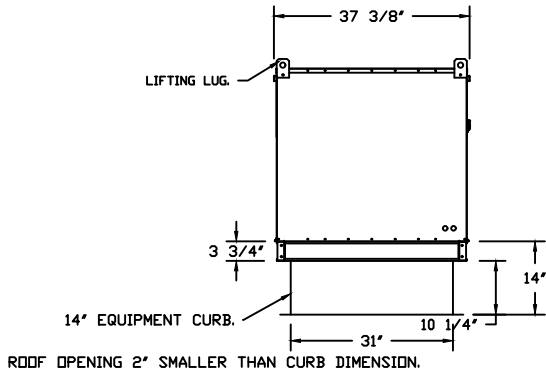
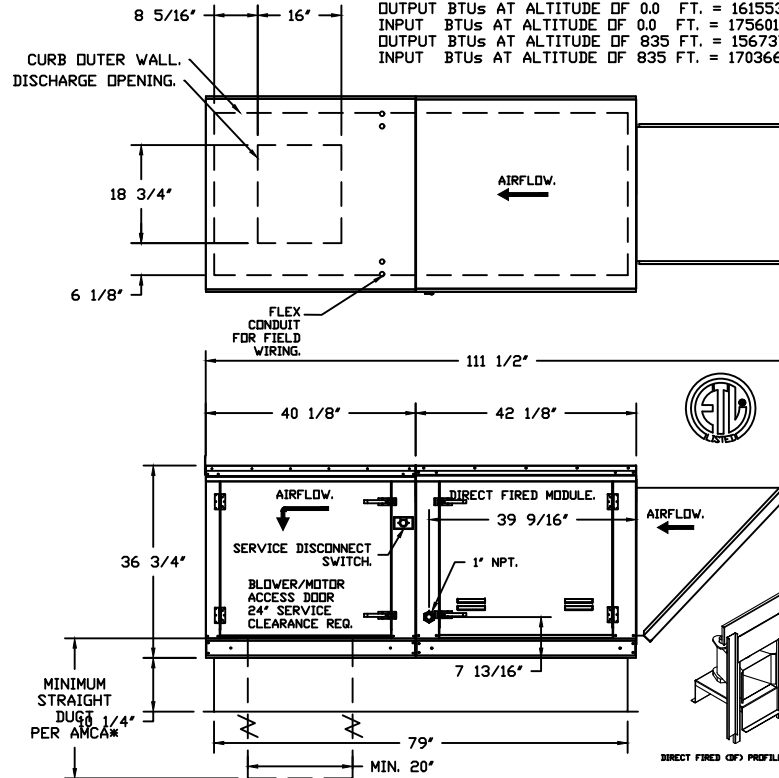
SUPPLY SIDE HEATER INFORMATION:

WINTER TEMPERATURE = 10°F. TEMP. RISE = 55°F.
 BTUs CALCULATED OFF ACTUAL AIR DENSITY.
 OUTPUT BTUs AT ALTITUDE OF 0.0 FT. = 161553.
 INPUT BTUs AT ALTITUDE OF 0.0 FT. = 175601.
 OUTPUT BTUs AT ALTITUDE OF 835 FT. = 156737.
 INPUT BTUs AT ALTITUDE OF 835 FT. = 170366.

FAN #2 EA2-D.250-20D - HEATER (KSF)

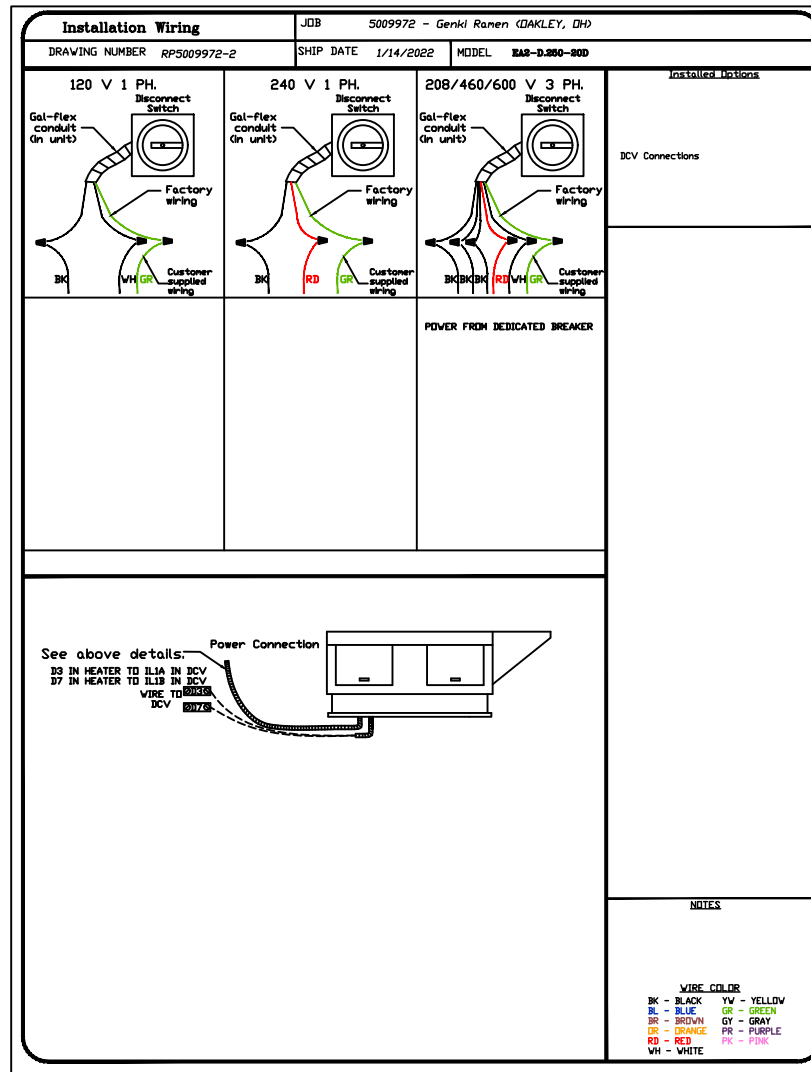
1. DIRECT GAS FIRED HEATED MAKE UP AIR UNIT WITH 20" MIXED FLOW DIRECT DRIVE FAN.
2. INTAKE HOOD WITH EZ FILTERS-LOW CFM.
3. DOWN DISCHARGE - AIR FLOW RIGHT -> LEFT.
4. LOW FIRE START. ALLOWS THE BURNER CIRCUIT TO ENERGIZE WHEN THE MODULATION CONTROL IS IN A LOW FIRE POSITION.
5. GAS PRESSURE GAUGE, 0-35", 2.5" DIAMETER, 1/4" THREAD SIZE.
6. GAS PRESSURE GAUGE, -5 TO +15 INCHES WC., 2.5" DIAMETER, 1/4" THREAD SIZE.
7. MOTORIZED BACK DRAFT DAMPER 22.75" X 24" FOR SIZE 2 STANDARD & MODULAR HEATER UNITS V/EXTENDED SHAFT, STANDARD GALVANIZED CONSTRUCTION, 3/4" REAR FLANGE, LOW LEAKAGE, LF120S ACTUATOR INCLUDED.
8. SEPARATE 120VAC WIRING PACKAGE FOR MAKE-UP AIR UNITS. OPTION MUST BE SELECTED WHEN MOUNTING VFD IN PREWIRE PANEL OR WITH DCV PACKAGE. PROVIDES SEPARATE 120VAC INPUT TO SUPPLY FAN. THIS 120V SIGNAL MUST BE RUN BY ELECTRICIAN FROM DCV TO MUA SWITCH.
9. PROFILE PLATE CONFIGURATION FOR SIZE 2 DIRECT FIRED UNIT FOR LOW CFM APPLICATIONS.
10. HINGED DOUBLE WALL INSULATED DOOR ASSEMBLY (BURNER/BLOWER SECTION).
11. 2 YEAR PARTS WARRANTY

*NOTE: SUPPLY DUCT MUST BE INSTALLED TO MEET SMACNA STANDARDS. A MINIMUM STRAIGHT DUCT LENGTH MUST BE MAINTAINED DOWNSTREAM OF UNIT DISCHARGE AS OUTLINED IN AMCA PUBLICATION 201. WHEN USING RECTANGULAR DUCTWORK, ELBOWS MUST BE RADIUS THROAT, RADIUS BACK WITH TURNING VANES. FLEXIBLE DUCTWORK AND SQUARE THROAT/SQUARE BACK ELBOWS SHOULD NOT BE USED. ANY TRANSITION AND/OR TURNS IN THE DUCTWORK WILL CAUSE SYSTEM EFFECT. SYSTEM EFFECT WILL DRASTICALLY INCREASE STATIC PRESSURE AND REDUCE AIRFLOW. DO NOT RELY ON UNIT TO SUPPORT DUCT IN ANY WAY. FAILURE TO PROPERLY SIZE DUCTWORK MAY CAUSE SYSTEM EFFECTS AND REDUCE PERFORMANCE OF THE EQUIPMENT.
 SUGGESTED STRAIGHT DUCT SIZE IS 20" x 20".



CAPTIVEAIR

JOB Genki Ramen (DAKLEY, OH)	
LOCATION Cincinnati, OH, 45209	
DATE 1/20/2022	JOB # 5009972
DWG # 7	DRAWN BY jcirilli
REV.	SCALE 3/8" = 1'-0"



CAPTIVEAIR

JOB Genki Ramen (DAKLEY, OH)	
LOCATION Cincinnati, OH, 45209	
DATE 1/20/2022	JOB # 5009972
DWG # 8	DRAWN BY jcirilli
REV.	SCALE 3/8' = 1'-0'

