

SITE NUMBER: 00355
 BASE MODEL: (2.0) DTO
 ASSET TYPE: FRANCHISE
 CLASSIFICATION: NEW
 OWNER: SCHMIDT GROUP
 BASE VERSION: 2021
 UPGRADE CLASSIFICATION: NEW BUILD

PROJECT YEAR: 2022
 FURNITURE PACKAGE: (2.0) UM BRIT
 DRAWING RELEASE: SUMMER 2021

Project No. **21-099**

750 Brookedge Boulevard
 Westerville, Ohio 43081
 614-839-4639
 614-839-2222 FAX
M Engineering

Wendy's
 2519 RANDLEMAN ROAD
 GREENSBORO, NC, 27406

REV. DATE DESCRIPTION
 ▲
 ▲
 ▲
 ISSUE DATE: FEBRUARY 2, 2022
 PROJECT NUMBER: 00355
 DRAWN BY: BLS
 CHECKED BY: BLS

DATE: 6/25/2021
 DWG.#: 4957686
 DRAWN BY: JGE60
 SCALE: 3/4" = 1'-0"
 MASTER DRAWING

SHEET NO. 2
 SHEET NAME
 HOOD DETAILS
 SHEET NUMBER

H1.2

HOOD INFORMATION

| HOOD NO | TAG | MODEL | LENGTH | MAX COOKING TEMP | TYPE | DESIGN CFM/FT | TOTAL EXH CFM | EXHAUST PLENUM RISER(S) | | | | HOOD CONSTRUCTION | HOOD CONFIG | | | |
|---------|--------------------|-----------|--------|------------------|------|---------------|---------------|-------------------------|------|--------|------|-------------------|-------------|----------------------|-------|------------|
| | | | | | | | | WIDTH | LENG | HEIGHT | DIA | | CFM | VEL | SP | END TO END |
| 2 | Hood 2-Fryer L0502 | 4824 ND-2 | 9' 0" | 450 Deg | I | 133 | 1200 | | 4' | 12' | 1200 | 1928 | -0.568" | 430 SS WHERE EXPOSED | ALONE | ALONE |

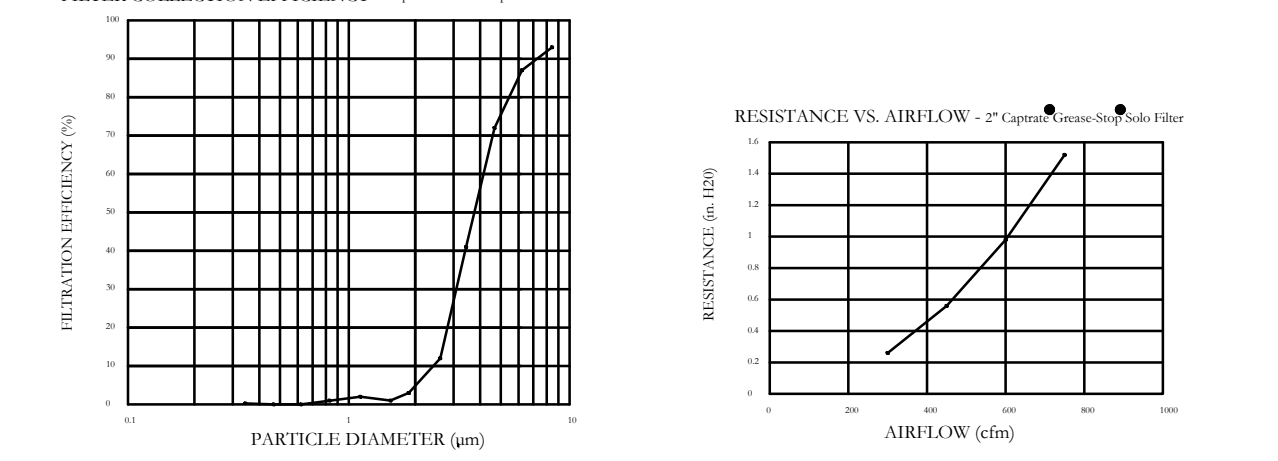
HOOD INFORMATION

| HOOD NO | TAG | TYPE | FILTER(S) | | | LIGHT(S) | | | UTILITY CABINET(S) | | | | FIRE SYSTEM PIPING | HOOD HANGING WEIGHT | | |
|---------|--------------------|----------------------|-----------|--------|--------|------------------------|-----|----------------|--------------------|----------|-------------|------------------|--------------------|---------------------|------|--------------------|
| | | | QTY | HEIGHT | LENGTH | EFFICIENCY @ 7 MICRONS | QTY | TYPE | WIRE GUARD | LOCATION | SIZE | FIRE SYSTEM TYPE | | | SIZE | ELECTRICAL MODEL # |
| 2 | Hood 2-Fryer L0502 | Captrate Solo Filter | 6 | 16" | 16" | 85% See Filter Spec | 3 | L55 Series E26 | NO | LEFT | 12"x48"x24" | ANSUL R102 | 3.0/3.0 | | YES | 547 LBS |

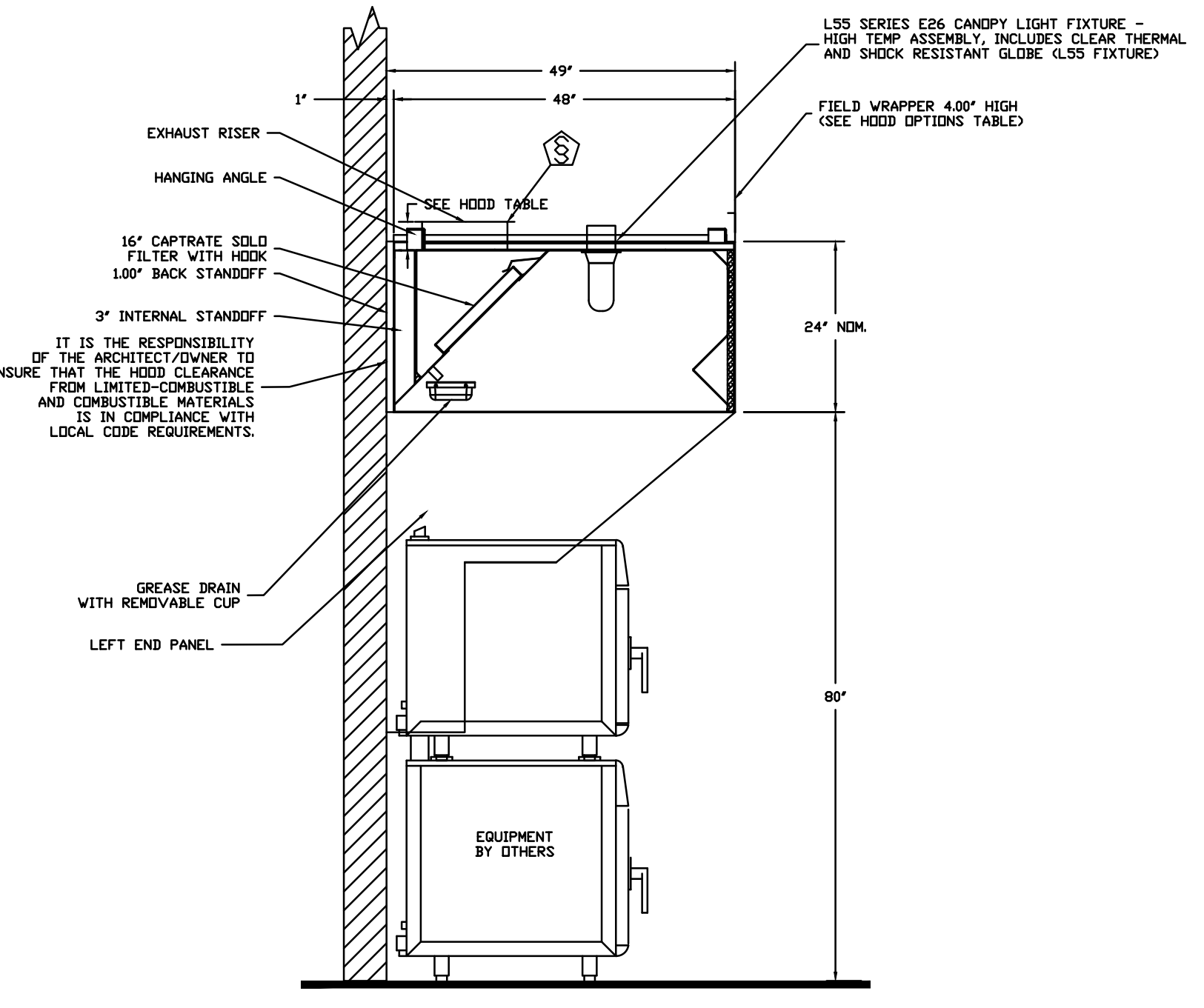
HOOD OPTIONS

| HOOD NO | TAG | OPTION |
|---------|--------------------|---|
| 2 | Hood 2-Fryer L0502 | FIELD WRAPPER 4.00' High Front, Left, Right BACK STANDOFF (FLAT) 1" Wide 120" Long RIGHT QUARTER END PANEL 23" Top Width, 0" Bottom Width, 23" High 430 SS LEFT END PANEL CUSTOM 430 SS RISER SENSOR INSTALL 6IN PLEN |

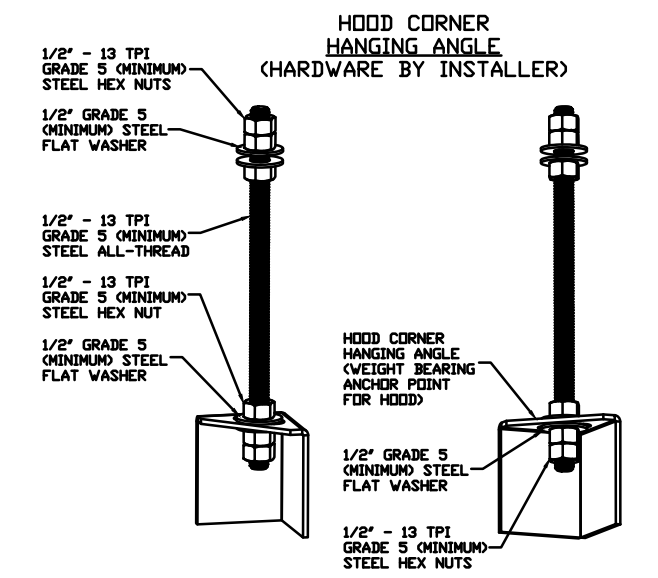
SPECIFICATION: CAPTRATE® GREASE-STOP® SOLO FILTER
 THE CAPTRATE GREASE-STOP SOLO FILTER IS A SINGLE-STAGE FILTER FEATURING A UNIQUE 3-BAFFLE DESIGN IN CONJUNCTION WITH A SLOTTED REAR BAFFLE DESIGN, TO DELIVER EXCEPTIONAL FILTRATION EFFICIENCY.
 FILTER IS STAINLESS STEEL CONSTRUCTION, AND SIZED TO FIT INTO STANDARD 2-INCH DEEP HOOD CHANNEL(S).
 UNITS SHALL INCLUDE STAINLESS STEEL HANDLES AND A FASTENING DEVICE TO SECURE THE TWO COMPONENTS WHEN ASSEMBLED.
 GREASE EXTRACTION EFFICIENCY PERFORMANCE SHALL REMOVE AT LEAST 75% OF GREASE PARTICLES FIVE MICRONS IN SIZE, AND 90% GREASE PARTICLES SEVEN MICRONS IN SIZE AND LARGER, WITH A CORRESPONDING PRESSURE DROP NOT TO EXCEED 1.0 INCHES OF WATER GAUGE.
 THE CAPTRATE GREASE-STOP SOLO WAS TESTED TO ASTM STANDARD ASTM F2519-05.
 FILTER COLLECTION EFFICIENCY: Captrate Solo Filter



CAPTRATE FILTERS ARE BUILT IN COMPLIANCE WITH:
 NFPA #96
 NSF STANDARD #2
 UL STANDARD #1046
 INT. MECH. CODE (IMC)

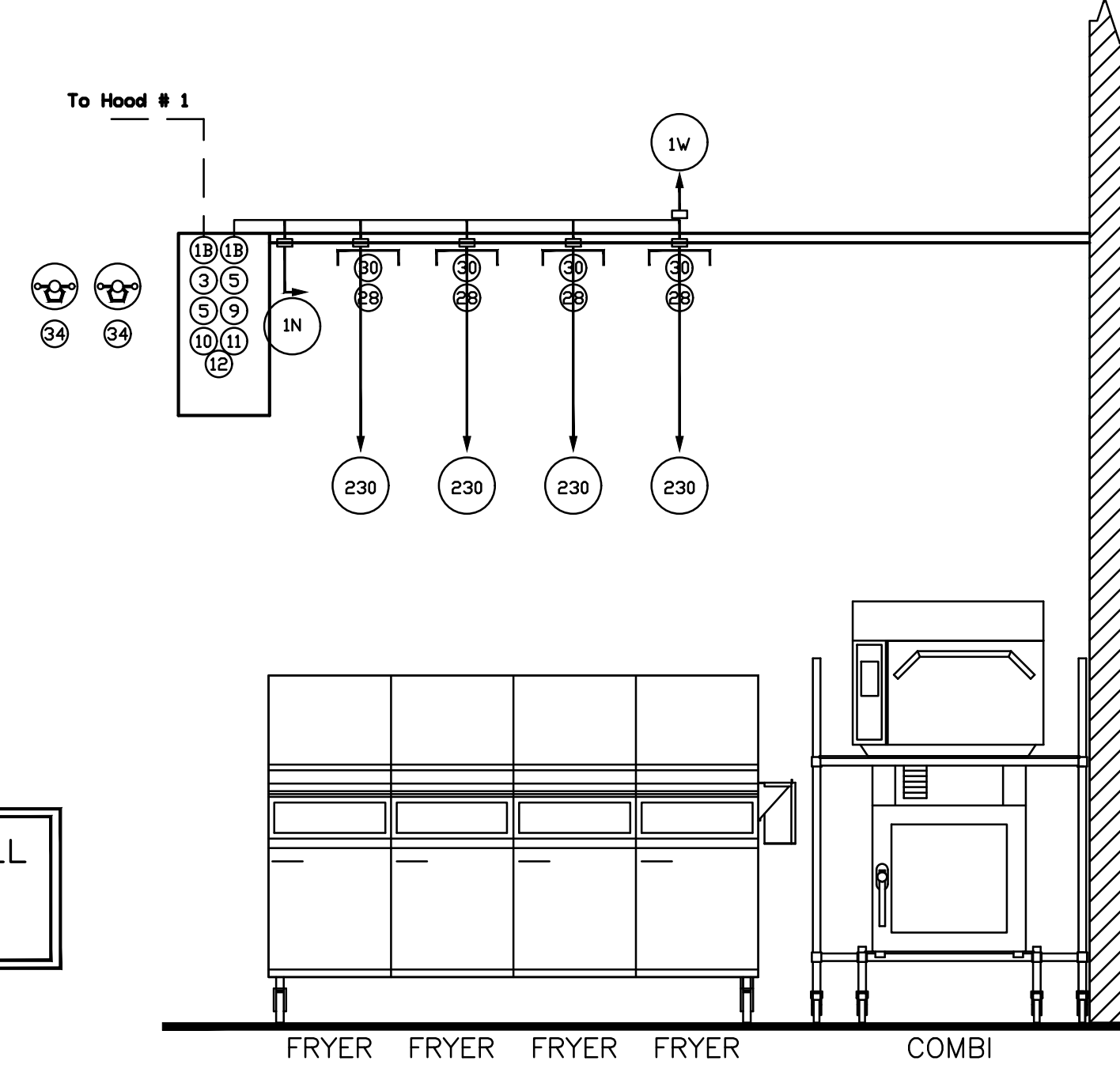
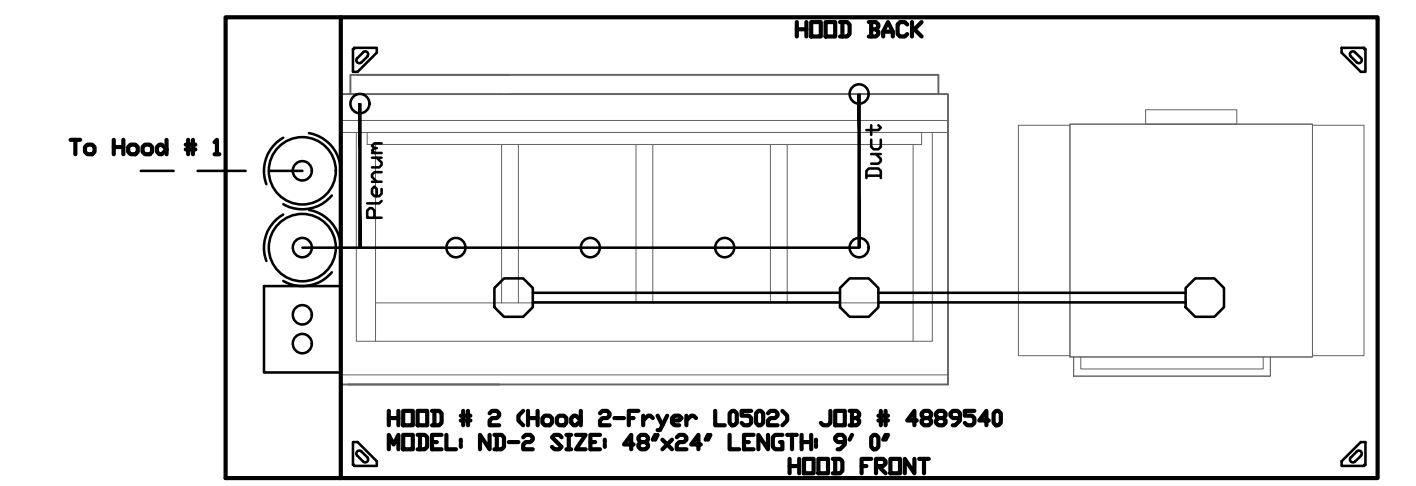


SECTION VIEW - MODEL 4824ND-2 HOOD - #2 (Hood 2-Fryer- L0502)



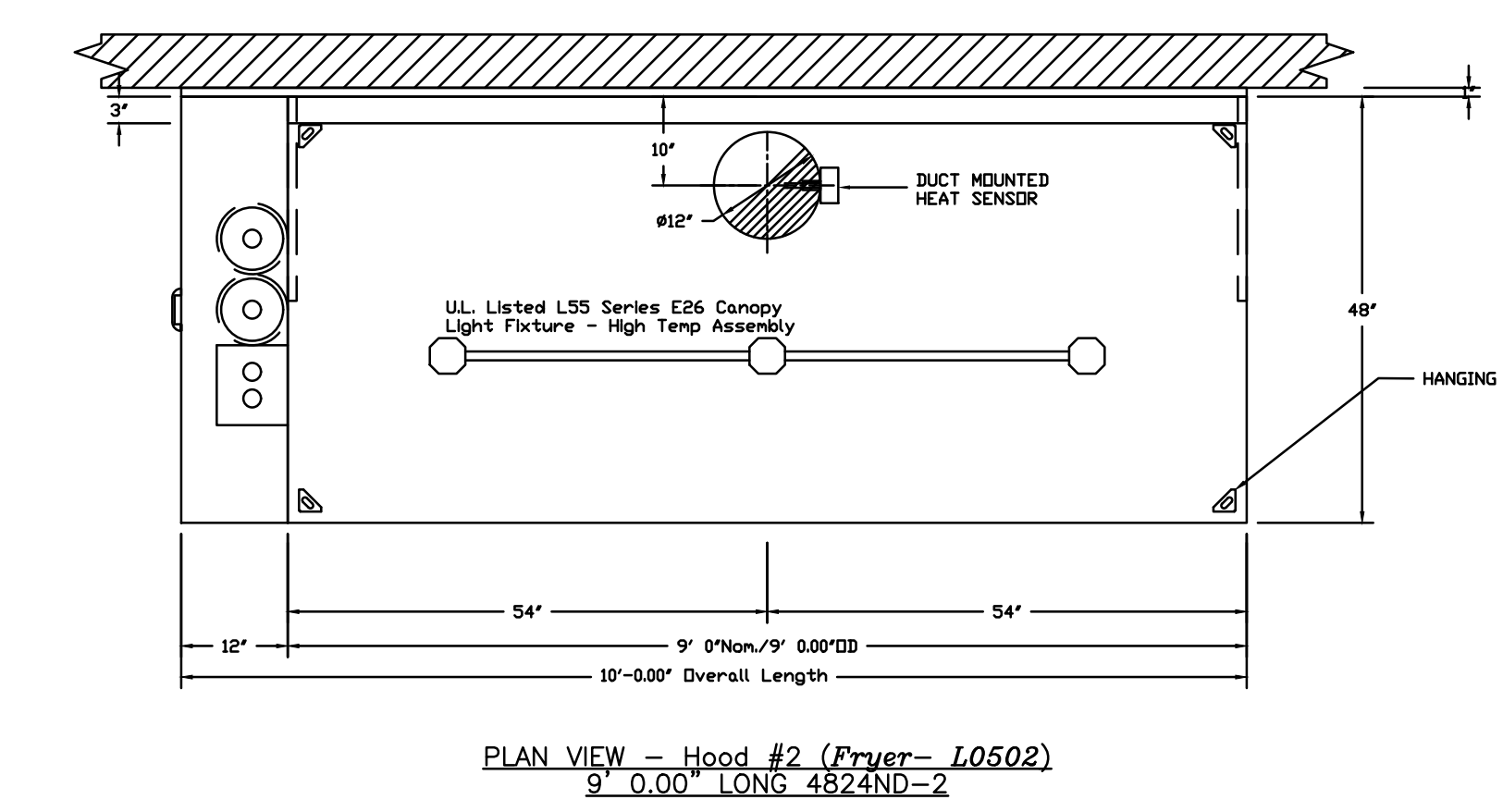
ASSEMBLY INSTRUCTIONS

HANGING ANGLE MUST BE SUPPORTED WITH 1/2" - 13 TPI GRADE 5 (MINIMUM) ALL-THREAD, SANDWICH HANGING ANGLES AND CEILING ANCHOR POINTS WITH 1/2" - 13 TPI GRADE 5 (MINIMUM) STEEL FLAT WASHERS AND 1/2" - 13 TPI GRADE 5 (MINIMUM) HEX NUTS AS SHOWN. MUST USE DOUBLED HEX NUT CONFIGURATION BENEATH HOOD HANGING ANGLES AND ABOVE CEILING ANCHORS. MAINTAIN 1/4" OF EXPOSED THREADS BENEATH BOTTOM HEX NUT. TORQUE ALL HEX NUTS TO 57 FT-LBS.
 HANGING ANGLES LOCATED ON EACH CORNER OF HOOD 4 TOTAL.



CAPTIVE-AIRE HOODS ARE BUILT IN COMPLIANCE WITH
 Intertek
 NFPA #96
 UL 710 & ULC710 STANDARDS
 E.T.L. LISTED 102900319PRT-001

FOR DESIGN OR ORDERING INFORMATION PLEASE CALL
 JACOB BOONE - 321-270-7692
 OR EMAIL REG60@CAPTIVEAIRE.COM



PLAN VIEW - Hood #2 (Fryer- L0502) 9' 0.00" LONG 4824ND-2

12/20/22, 2:32 PM, P:\22-Box\22497771-1-1-Hood Details.dwg, bshale

FIRE SYSTEM INFORMATION

| FIRE SYSTEM NO | TAG | TYPE | SIZE | FLOW POINTS | INSTALLATION | |
|----------------|-----|------------|---------|-------------|-------------------|------------------|
| | | | | | SYSTEM | LOCATION ON HOOD |
| 1 | | ANSUL R102 | 3.0/3.0 | 18 | FIRE CABINET LEFT | LEFT, HOOD 2 |

GAS VALVE(S)

| FIRE SYSTEM NO | TAG | TYPE | SIZE | SUPPLIED BY |
|----------------|-----|------------|-------|---------------------|
| 1 | | MECHANICAL | 1.500 | CAPTIVEAIRE SYSTEMS |

FIRE SYSTEM PARTS LIST KEY

| FIRE SYSTEM NO | TAG | KEY NUMBER - PART DESCRIPTION | QTY BY FACTORY | QTY BY DIST |
|----------------|-----|---|----------------|-------------|
| | | 0 - 0 - 43-15733 AIR CYLINDER ASSEMBLY - AIR CYLINDER AND TUBING FOR MECHANICAL GAS VALVES (ANSUL PART #15733). | 1 | 0 |
| | | 0 - 0 - 439861 LARGE BLOWOFF CAP, METAL, TO FIT NEW LASER-ETCHED ANSUL NOZZLES, A002420L. | 13 | 0 |
| | | 0 - 0 - TANK STRAP TANK STRAP - USED FOR ANSUL TANKS. | 2 | 0 |
| | | 0 - 0 - UCTANKBRACKET TANK BRACKET FOR FIRE SYSTEM TANK INSTALLATION IN UTILITY CABINETS. | 2 | 0 |
| | | 1 - 1 - AT - 3.0 TANK(1B) - 3.0 GALLON SS TANK (FOR USE WITH AUTOMAN RELEASE, ACTUATOR, OR SS ENCLOSURE (UL/ULC) MACOLA # 01-429862. | 2 | 0 |
| | | 3 - 3 - ANS-DEM REGULATED RELEASE - ANSUL REGULATED MECHANICAL RELEASE/BRAKET ASSEMBLY, DEM, R-102, CARTRIDGE DETECTION INCLUDED, ANSUL PART # 79493. | 1 | 0 |
| | | 5 - 5 - L10-3.0 AGENT - ANSULEX LDW PH WET CHEMICAL AGENT, 3 GALLON (UL) 79372. | 0 | 2 |
| | | 9 - 9 - 101-30 CARTRIDGE - CARBON DIOXIDE, 101-30, CARTRIDGE (R-102) 19-1585L. | 0 | 1 |
| | | 10 - 10 - TLINK LINK - TEST LINK (1 TEST LINK) ANSUL PART # 24916, MACOLA # 20-24916. | 0 | 1 |
| | | 11 - 11 - MICRO-SDA MICROSWITCH KIT - INCLUDES 2 SWITCHES AND MOUNTING HARDWARE, SINGLE DUAL ELECTRIC SWITCH, ONE STANDARD SWITCH, ONE ALARM DUTY SWITCH ANSUL PART # 437155, MACOLA # 08-437155. | 1 | 0 |
| | | 12 - 12 - HOSE HOSE - RUBBER HOSE. | 1 | 0 |
| | | 14 - 14 - 419336 NOZZLE - 1W NOZZLE, DUCT/APPLIANCE (REPLACES ANSUL PART# 419347, CAS PART# 419336) A0001266. | 2 | 0 |
| | | 15 - 15 - 419335 NOZZLE - IN NOZZLE, PLENUM/APPLIANCE (REPLACES ANSUL PART# 419346, CAS PART# 419335) A0001265. | 6 | 0 |
| | | 21 - 21 - 419339 NOZZLE - 230 NOZZLE, APPLIANCE (REPLACES ANSUL PART# 419350, CAS PART# 419339) A0001269. | 4 | 0 |
| | | 24 - 24 - 419341 NOZZLE - 260 NOZZLE, APPLIANCE (REPLACES ANSUL PART# 419352, CAS PART# 419341) A0001271. | 1 | 0 |
| | | 25 - 25 - 418569 NOZZLE ADAPTOR - SWIVEL NOZZLE ADAPTOR (REPLACES CAS PART # 418569) A0001274. | 5 | 0 |
| | | 26 - 26 - OSA-3/8 OJIK SEAL - 3/8" (UL). | 13 | 0 |
| | | 27 - 27 - OPSA-1/2 PULLEY SEAL - 1/2" HOOD SEAL (UL) ANSUL PART # 423253, MACOLA # 32-79768. | 5 | 0 |
| | | 28 - 28 - S-DET DETECTOR - SERIES (SCISSOR LINKAGE) ANSUL PART # 435547/435548 (OLD # 417369/434480), MACOLA # 05-417369. | 7 | 0 |
| | | 29 - 29 - ANS-360FL FUSIBLE LINK - 360DEG F, R-102 AND PIRANHA, ANSUL PART # 439888. | 2 | 0 |
| | | 30 - 30 - ANS-500FL FUSIBLE LINK - 500DEG F, R-102 AND PIRANHA, ANSUL PART # 439832. | 5 | 0 |
| | | 34 - 34 - RPS-A REMOTE PULL STATION - RED COMPOSITE (WITHOUT WIRE ROP) 434618 (OLD MACOLA #06-4835). | 2 | 0 |
| | | 35 - 35 - PE-LT PULLEY ELBOW - LDW TEMP. PULLEY ELBOW, SET SCREW TYPE ANSUL PART # 415670, MACOLA # 11-415671. | 5 | 0 |
| | | 36 - 36 - PE-HT PULLEY ELBOW - HIGH TEMP PULLEY ELBOW, COMPRESSION TYPE, ANSUL PART # 423251, MACOLA # 10-43771. | 4 | 0 |

SYSTEM SIZE: ANSUL-3.0/3.0 TOTAL FP REQUIRED: 18.
 HOOD # 1 6' 10.00" LONG x 54" WIDE x 24" HIGH.
 RISER # 1 SIZE: 12" DIA.
 HOOD # 1 METAL BLDW-OFF CAPS INCLUDED.
 HOOD # 2 9' 0.00" LONG x 48" WIDE x 24" HIGH.
 RISER # 1 SIZE: 12" DIA.
 HOOD # 2 METAL BLDW-OFF CAPS INCLUDED.

LEGEND - FIRE CABINET ANSUL SYSTEM

- 1A 1.5 GALLON TANK
- 1B 3 GALLON TANK
- 2 DEM AUTOMAN RELEASE
- 3 DEM REGULATED RELEASE
- 4 DEM REGULATED ACTUATOR
- 5 ANSULEX LIQUID AGENT (3 GAL.)
- 6 ANSULEX LIQUID AGENT (1.5 GAL.)
- 7 CARTRIDGE (101-20)
- 8 CARTRIDGE (101-10)
- 9 CARTRIDGE (101-30)
- 9A CARTRIDGE (LT-A-101-30)
- 9B DOUBLE TANK CARTRIDGE
- 10 TEST LINK
- 11 DOUBLE MICROSWITCH
- 12 HOSE ASSEMBLY
- 1100 DUCT NOZZLE (430913)
- 2W DUCT NOZZLE (419337)
- 1W NOZZLE ASSEMBLY (419336)
- 1F NOZZLE ASSEMBLY (419333)
- 1N NOZZLE ASSEMBLY (419335)
- 1/2N NOZZLE ASSEMBLY (419334)
- 3N NOZZLE ASSEMBLY (419338)
- 245 NOZZLE ASSEMBLY (419340)
- 230 NOZZLE ASSEMBLY (419339)
- 2120 NOZZLE ASSEMBLY (419343)
- 290 NOZZLE ASSEMBLY (419342)
- 260 NOZZLE ASSEMBLY (419341)
- 28 DETECTOR BRACKET
- 29 LDW TEMP FUSIBLE LINK
- 30 HIGH TEMP FUSIBLE LINK
- MGV MECHANICAL GAS VALVE
- EGV ELECTRICAL GAS VALVE
- 34 REMOTE MANUAL PULL STATION
- S SWIVEL ADAPTOR

INCLUDES: FIELD INSTALLATION AND HOOKUP DURING NORMAL BUSINESS HOURS BY CERTIFIED INSTALLERS ONLY IN THE LOCATION NOTED ABOVE. TWO SITE VISITS ONLY (ONE VISIT TO SET PULL STATION & SYSTEM HOOKUP AND ONE VISIT FOR DNE TEST). ADDITIONAL VISITS WILL RESULT IN ADDITIONAL CHARGES. ONE MECHANICAL GAS VALVE PER SYSTEM AT A MAXIMUM SIZE OF 2". PERMIT, AND SYSTEM TEST.
 EXCLUDES: UNION LABOR & PREVAILING WAGE (LABOR & WAGES WILL BE ADDED IF APPLICABLE), GAS VALVE INSTALLATION, ELECTRICAL HOOKUP AND CONNECTIONS, HANGING OF FIRE CABINET, SHUNT TRIP, HANDHELD EXTINGUISHER(S), ON-SITE RE-PIPING DUE TO EQUIPMENT LAYOUT CHANGES.

NOTES

- FIELD PIPE DROPS AS SHOWN
- SLEEVING, ELBOWS, TEES, AND NOZZLES SUPPLIED BY CAS.
- RELOCATE NOZZLES IF FLOW PATTERN IS BLOCKED BY SHELVING, SALAMANDERS, ETC.
- MAXIMUM 9 ELBOWS IN SUPPLY LINE.
- MINIMUM 72 INCHES OF AGENT LINE FROM TANK TO FIRST NOZZLE COVERING A RANGE, FRYER, OR WOK TO REFLECT GENERAL PIPING REQUIREMENTS.
- IF APPLICABLE, PRE-PIPED CHARBROILER DROPS ARE SHIPPED LOOSE.
- FACTORY PIPING EXTENDS A MAXIMUM OF 6' ABOVE THE TOP OF THE HOOD.
- APPLIANCE DIMENSIONS LISTED REPRESENT THE COOKING SURFACE SIZE, NOT THE OVERALL APPLIANCE SIZE.

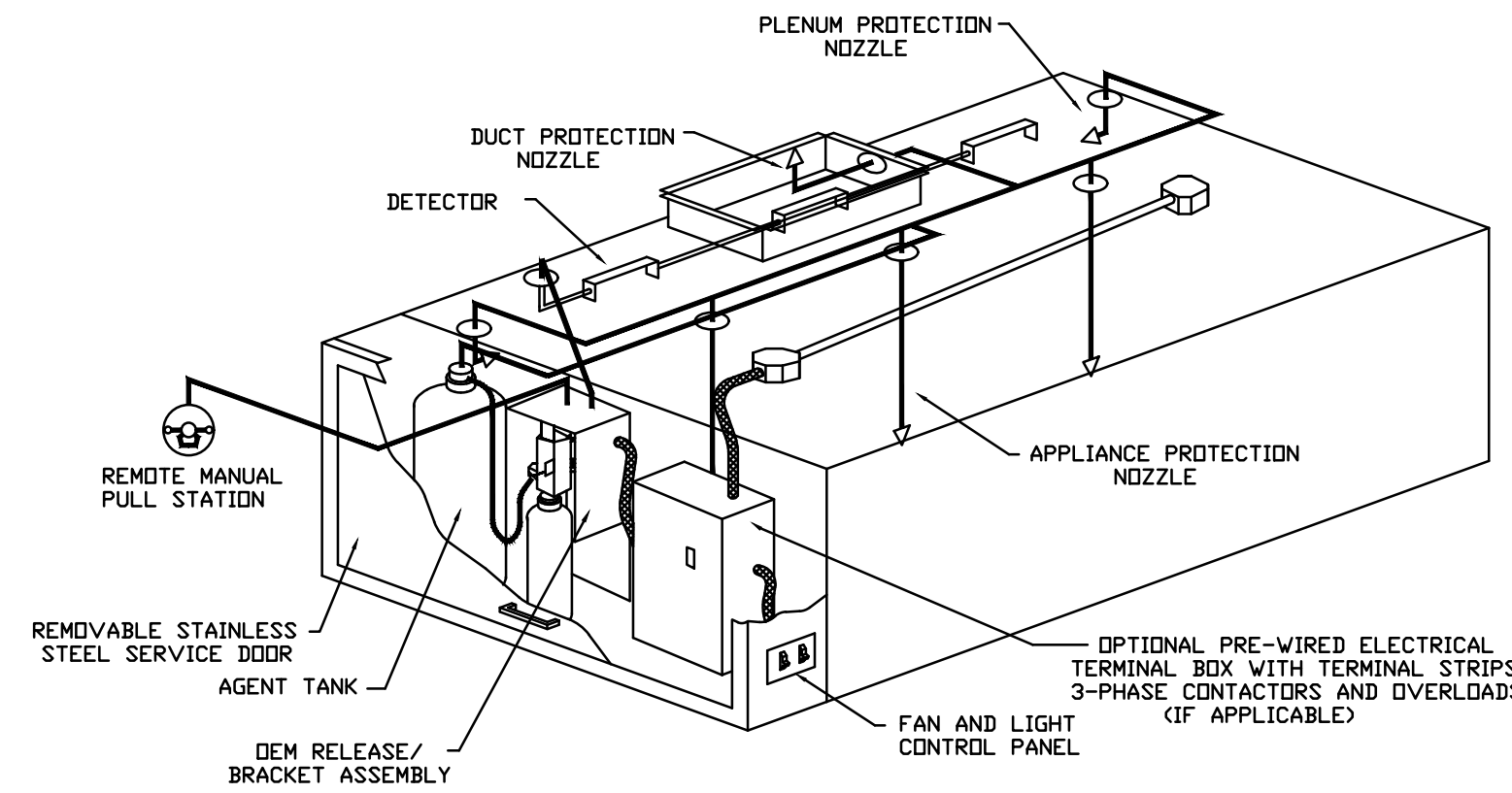
SPECIFICATIONS

THE RESTAURANT FIRE SUPPRESSION SYSTEM SHALL BE THE PRE-ENGINEERED TYPE WITH A FIXED NOZZLE AGENT DISTRIBUTION NETWORK. IT SHALL BE LISTED WITH UNDERWRITERS LABORATORIES, INC. (UL).

THE SYSTEM SHALL BE CAPABLE OF AUTOMATIC DETECTION AND ACTUATION WITH LOCAL OR REMOTE MANUAL ACTUATION. ACCESSORIES SHALL BE AVAILABLE FOR MECHANICAL OR ELECTRICAL GAS LINE SHUT-OFF APPLICATIONS.

THE EXTINGUISHING AGENT SHALL BE A POTASSIUM CARBONATE, POTASSIUM ACETATE-BASED FORMULATION DESIGNED FOR FLAME KNOCKDOWN AND SECUREMENT OF GREASE RELATED FIRES. IT SHALL BE AVAILABLE IN PLASTIC CONTAINERS WITH INSTRUCTIONS FOR LIQUID AGENT HANDLING AND USAGE.

THE REGULATED RELEASE MECHANISM SHALL BE COMPATIBLE WITH A FUSIBLE LINK DETECTION SYSTEM. THE FUSIBLE LINK SHALL BE SELECTED AND INSTALLED ACCORDING TO THE OPERATING TEMPERATURE IN THE VENTILATING SYSTEM. THE FUSIBLE LINK SHALL BE SUPPORTED BY A DETECTOR BRACKET/LINKAGE ASSEMBLY.



TYPICAL ANSUL R-102 SYSTEM LAYOUT

| REVISIONS | |
|-------------|------|
| DESCRIPTION | DATE |
| | |
| | |
| | |
| | |

CAPTIVEAIRE
 Florida National Accounts
 238 N Hunt Club Blvd, Suite 201, Longwood, FL 32779 PHONE: (407) 852-3100 FAX: (919) 227-5919 EMAIL: rpg50@captiveaire.com

Wendys Prototype - DTD Legacy JSG

DATE: 6/25/2021

DWG.#: 4957686

DRAWN BY: JGE60

SCALE: 3/4" = 1'-0"

MASTER DRAWING

SHEET NO. 3

| | |
|-------------------------|----------------|
| SITE NUMBER: | 00355 |
| BASE MODEL: | (2.0) DTO |
| ASSET TYPE: | FRANCHISE |
| CLASSIFICATION: | NEW |
| OWNER: | SCHMDT GROUP |
| BASE VERSION: | 2021 |
| UPGRADE CLASSIFICATION: | NEW BUILD |
| PROJECT YEAR: | 2022 |
| FURNITURE PACKAGE: | (2.0) UM BRITE |
| DRAWING RELEASE: | SUMMER 2021 |

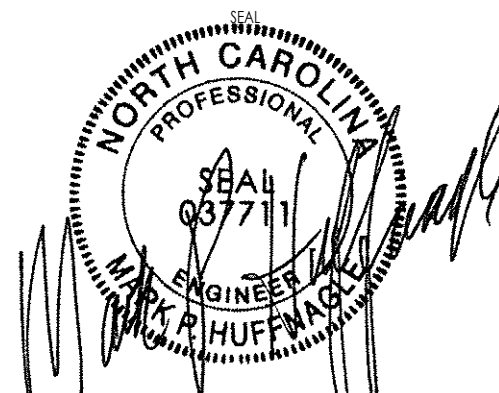
Project No. 21-099

750 Brookside Boulevard
 Westerville, Ohio 43081
 614 839-4639
 614-839-2222 FAX
M Engineering

Wendy's
 2519 RANDLEMAN ROAD
 GREENSBORO, NC, 27406

| REV. | DATE | DESCRIPTION |
|------|------|-------------|
| | | |
| | | |
| | | |
| | | |

ISSUE DATE: FEBRUARY 2, 2022
 PROJECT NUMBER: 00355
 DRAWN BY: BLS
 CHECKED BY: BLS



SHEET NAME
 HOOD DETAILS
 SHEET NUMBER

H1.3

EXHAUST FAN INFORMATION

| FAN UNIT NO. | TAG | QTY | FAN UNIT MODEL # | MANUFACTURER | CFM | ESP | RPM | MOTOR ENCL. | HP | BHP | PHASE | VOLTS | FLA | DISCHARGE VELOCITY | WEIGHT (LBS) | SONES |
|--------------|------|-----|------------------|--------------|------|-------|------|-------------|-------|--------|-------|-------|-----|--------------------|--------------|-------|
| 1 | EF-1 | 1 | DUBSHFA | CAPTIVEAIRE | 1200 | 1.250 | 1254 | TEAD-ECM | 0.750 | 0.3910 | 1 | 208 | 5.2 | 380 FPM | 88 | 10.7 |
| 2 | EF-2 | 1 | DUBSHFA | CAPTIVEAIRE | 1200 | 1.250 | 1254 | TEAD-ECM | 0.750 | 0.3910 | 1 | 208 | 5.2 | 380 FPM | 88 | 10.7 |
| 3 | EF-3 | 1 | DR10HFA | CAPTIVEAIRE | 300 | 0.340 | 1500 | TEAD-ECM | 0.166 | 0.0670 | 1 | 115 | 1.9 | | 48 | 6.8 |

FAN OPTIONS

| FAN UNIT NO. | TAG | QTY | DESCRIPTION |
|--------------|------|-----|---|
| 1 | EF-1 | 1 | GREASE BOX. |
| | | 1 | ECM WIRING PACKAGE - MANUAL DR 0-10VDC REFERENCE SPEED CONTROL (TELCO MOTOR), CCW ROTATION. |
| | | 1 | 2 YEAR PARTS WARRANTY. |
| 2 | EF-2 | 1 | GREASE BOX. |
| | | 1 | ECM WIRING PACKAGE - MANUAL DR 0-10VDC REFERENCE SPEED CONTROL (TELCO MOTOR), CCW ROTATION. |
| | | 1 | 2 YEAR PARTS WARRANTY. |
| 3 | EF-3 | 1 | I 12-BDD DAMPER. |
| | | 1 | ECM WIRING PACKAGE - MANUAL DR 0-10VDC REFERENCE SPEED CONTROL (TELCO MOTOR), CCW ROTATION. |
| | | 1 | 2 YEAR PARTS WARRANTY. |

FAN ACCESSORIES

| FAN UNIT NO. | TAG | EXHAUST | | | SUPPLY | | |
|--------------|------|------------|-------------|------------|----------------|------------------|------------|
| | | GREASE CUP | WALL DAMPER | SIDE MOUNT | GRAVITY DAMPER | MOTORIZED DAMPER | WALL MOUNT |
| 1 | EF-1 | YES | | | | | |
| 2 | EF-2 | YES | | | | | |
| 3 | EF-3 | | YES | | | | |

CURB ASSEMBLIES

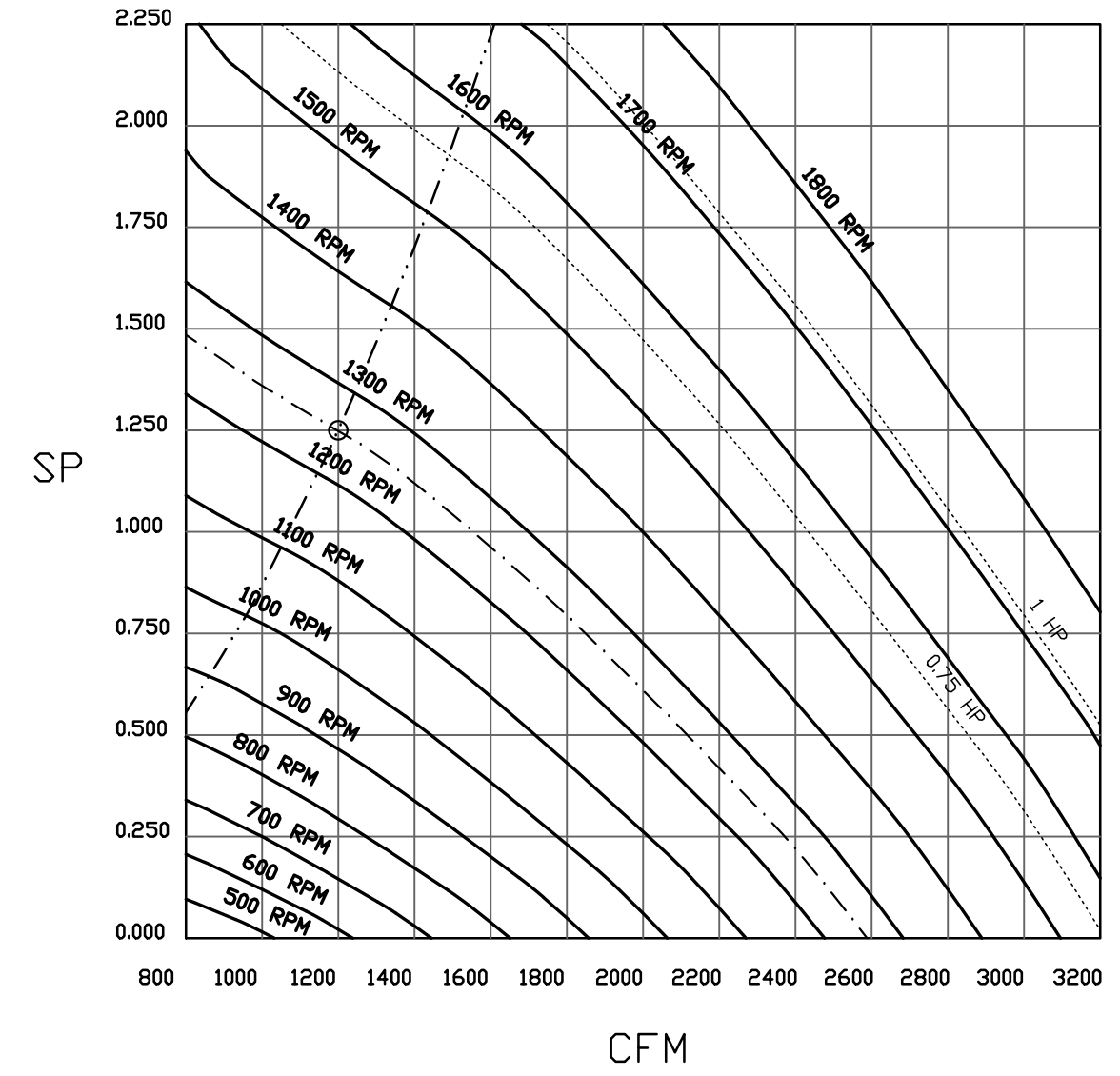
| NO | ON FAN | TAG | WEIGHT | ITEM | SIZE |
|----|--------|------|--------|------|--|
| 1 | # 1 | EF-1 | 79 LBS | CURB | 23.000"W X 23.000"L X 36.000"H HINGED. |
| 2 | # 2 | EF-2 | 79 LBS | CURB | 23.000"W X 23.000"L X 36.000"H HINGED. |
| 3 | # 3 | EF-3 | 22 LBS | CURB | 17.500"W X 17.500"L X 20.000"H. |

SYSTEM DESIGN VERIFICATION (SDV)

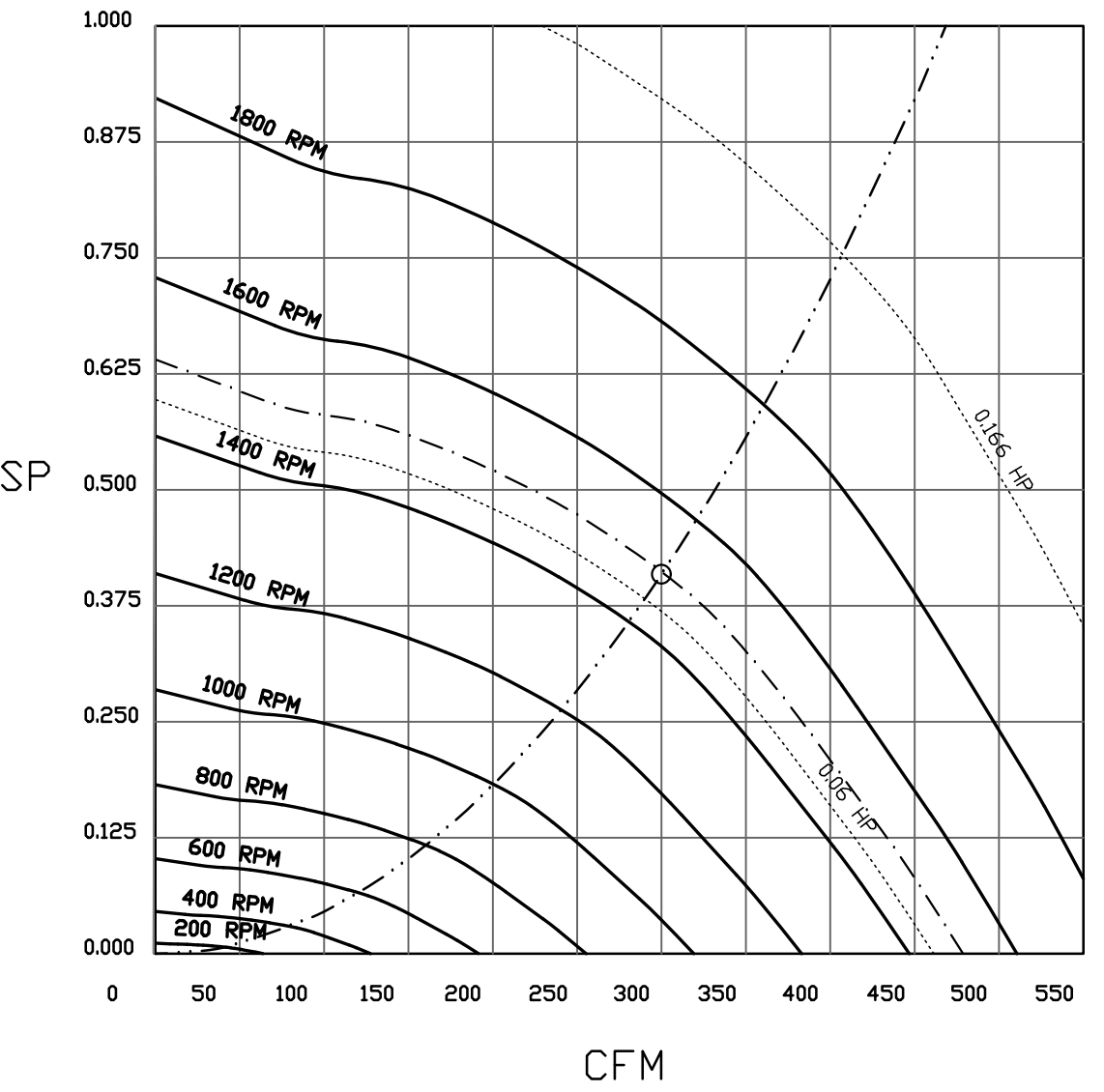
IF ORDERED, CAS SERVICE WILL PERFORM A SYSTEM DESIGN VERIFICATION (SDV) ONCE ALL EQUIPMENT HAS HAD A COMPLETE START UP PER THE OPERATION AND INSTALLATION MANUAL. TYPICALLY, THE SDV WILL BE PERFORMED AFTER ALL INSPECTIONS ARE COMPLETE. ANY FIELD RELATED DISCREPANCIES THAT ARE DISCOVERED DURING THE SDV WILL BE BROUGHT TO THE ATTENTION OF THE GENERAL CONTRACTOR AND CORRESPONDING TRADES ON SITE. THESE ISSUES WILL BE DOCUMENTED AND FORWARDED TO THE APPROPRIATE SALES OFFICE. IF CAS SERVICE HAS TO RESOLVE A DISCREPANCY THAT IS A FIELD ISSUE, THE GENERAL CONTRACTOR WILL BE NOTIFIED AND BILLED FOR THE WORK. SHOULD A RETURN TRIP BE REQUIRED DUE TO ANY FIELD RELATED DISCREPANCY THAT CANNOT BE RESOLVED DURING THE SDV, THERE WILL BE ADDITIONAL TRIP CHARGES.

DURING THE SDV, CAS SERVICE WILL ADDRESS ANY DISCREPANCY THAT IS THE FAULT OF THE MANUFACTURER. SHOULD A RETURN TRIP BE REQUIRED, THE GENERAL CONTRACTOR AND APPROPRIATE SALES OFFICE WILL BE NOTIFIED. THERE WILL BE NO ADDITIONAL CHARGES FOR MANUFACTURER DISCREPANCIES.

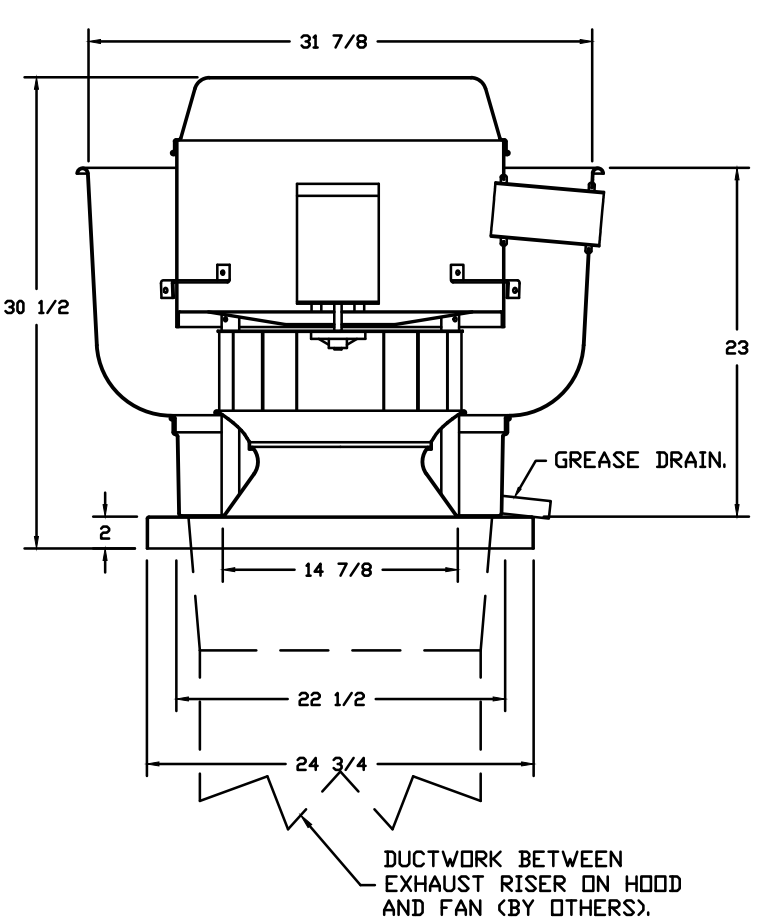
FANS #1 (EF-1) #2 (EF-2) - EXHAUST PERFORMANCE CURVES.
1200 CFM, 1.25 SP @ 1254 RPM AND 0.391 BHP AT 0 FEET AND 70 DEG F.
* PLEASE NOTE THAT THESE CURVES WERE ADJUSTED FOR JOB SPECIFIC TEMPERATURE AND ALTITUDE.



FAN#3 (EF-3) - EXHAUST PERFORMANCE CURVES.
300 CFM, 0.409 SP @ 1500 RPM and 0.067 BHP AT 60 FEET and 70 deg F.
* Please note that these curves were adjusted for Job specific temperature and altitude.



FANS #1 (EF-1), #2 (EF-2) DUBSHFA - EXHAUST FAN

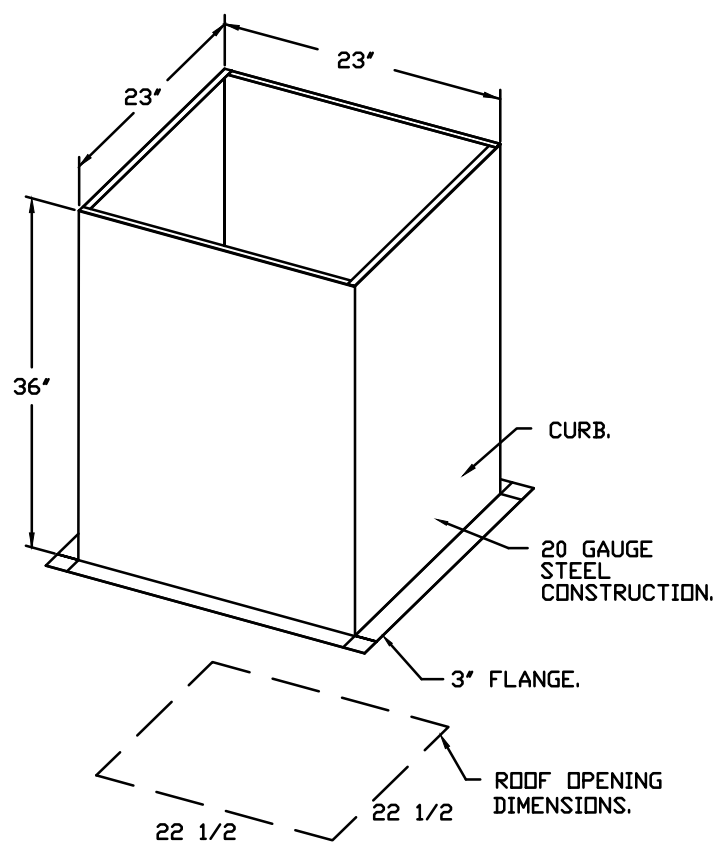


- FEATURES:**
- DIRECT DRIVE CONSTRUCTION (NO BELTS/PULLEYS).
 - ROOF MOUNTED FANS.
 - RESTAURANT MODEL.
 - UL705 AND UL752 AND UL-C-5645
 - VARIABLE SPEED CONTROL.
 - INTERNAL WIRING.
 - THERMAL OVERLOAD PROTECTION (SINGLE PHASE).
 - HIGH HEAT OPERATION 300°F (149°C).
 - GREASE CLASSIFICATION TESTING.
 - NEMA 3R SAFETY DISCONNECT SWITCH.

NORMAL TEMPERATURE TEST
EXHAUST FAN MUST OPERATE CONTINUOUSLY WHILE EXHAUSTING AIR AT 300°F (149°C) UNTIL ALL FAN PARTS HAVE REACHED THERMAL EQUILIBRIUM, AND WITHOUT ANY DETERIORATING EFFECTS TO THE FAN WHICH WOULD CAUSE UNSAFE OPERATION.

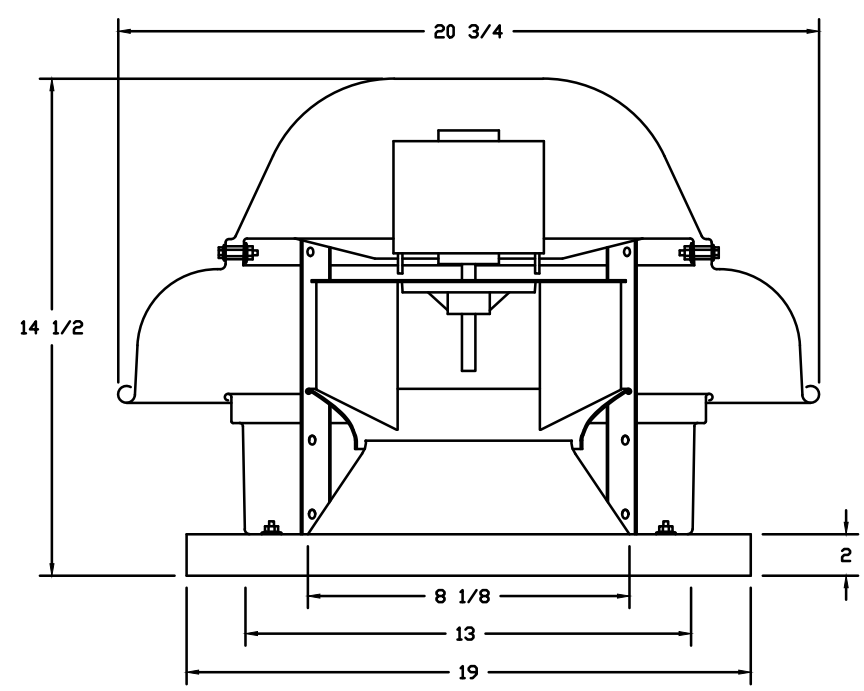
ABNORMAL FLARE-UP TEST
EXHAUST FAN MUST OPERATE CONTINUOUSLY WHILE EXHAUSTING BURNING GREASE VAPORS AT 600°F (316°C) FOR A PERIOD OF 15 MINUTES WITHOUT THE FAN BECOMING DAMAGED TO ANY EXTENT THAT COULD CAUSE AN UNSAFE CONDITION.

DETAILS:
GREASE BOX
ECM WIRING PACKAGE - MANUAL DR 0-10VDC REFERENCE SPEED CONTROL (TELCO MOTOR), CCW ROTATION.
2 YEAR PARTS WARRANTY.



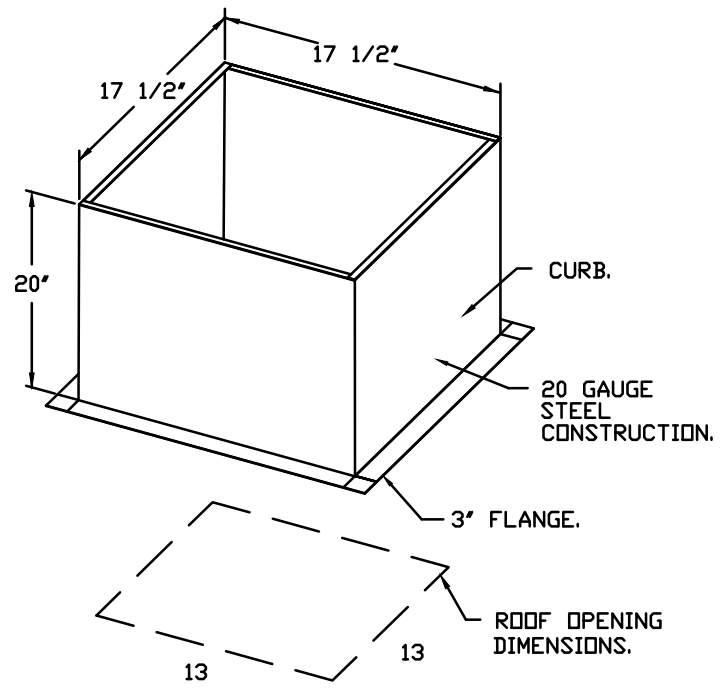
PITCHED CURBS ARE AVAILABLE FOR PITCHED ROOFS.
SPECIFY PITCH: EXAMPLE: 7/12 PITCH = 30° SLOPE.

FAN #3 DR10HFA - EXHAUST FAN (EF-3)



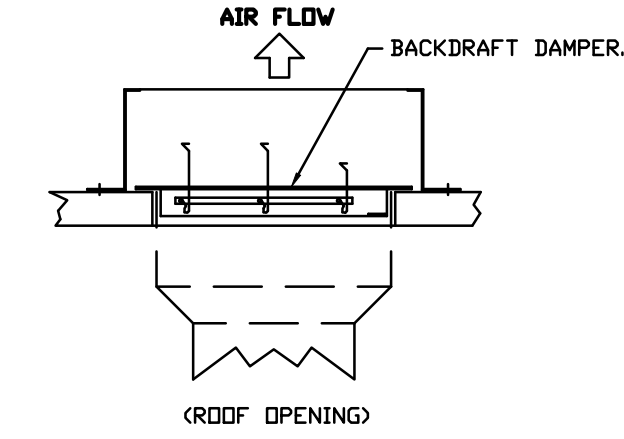
- FEATURES:**
- DIRECT DRIVE CONSTRUCTION (NO BELTS/PULLEYS).
 - ROOF MOUNTED FANS.
 - UL705.
 - SAFETY DISCONNECT.
 - STANDARD BIRD SCREEN.
 - SPEED CONTROL.

DETAILS:
I 12-BDD DAMPER
ECM WIRING PACKAGE - MANUAL DR 0-10VDC REFERENCE SPEED CONTROL (TELCO MOTOR), CCW ROTATION.
2 YEAR PARTS WARRANTY.



PITCHED CURBS ARE AVAILABLE FOR PITCHED ROOFS.
SPECIFY PITCH: EXAMPLE: 7/12 PITCH = 30° SLOPE.

BACKDRAFT DAMPER INSTALLATION



REVISIONS

| REV. | DATE | DESCRIPTION |
|------|------|-------------|
| | | |
| | | |
| | | |

CAPTIVEAIRE
Florida National Accounts
230 N Hunt Club Blvd., STE 201, Longwood, FL 32779 PHONE: (407) 882-3100 FAX: (813) 227-5813 EMAIL: reg@captivaire.com

Wendys Prototype - DTD Legacy DSG

DATE: 6/25/2021
DWG.#: 4957686
DRAWN BY: JGE60
SCALE: 3/4" = 1'-0"
MASTER DRAWING
SHEET NO. 4

SITE NUMBER: 00355
BASE MODEL: (2.0) DTO
ASSET TYPE: FRANCHISE
CLASSIFICATION: NEW
OWNER: SCHMIDT GROUP
BASE VERSION: 2021
UPGRADE CLASSIFICATION: NEW BUILD
PROJECT YEAR: 2022
FURNITURE PACKAGE: (2.0) UM BRITE
DRAWING RELEASE: SUMMER 2021

Project No. **21-099**

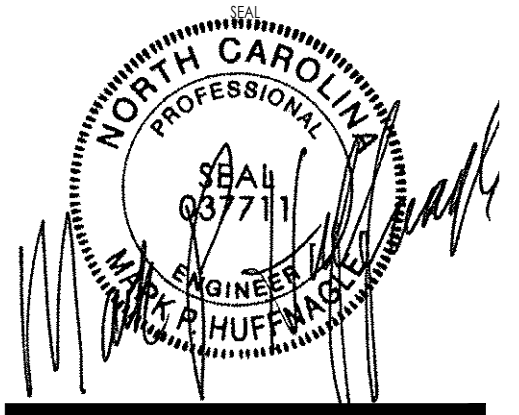
750 Brookside Boulevard
Westerville, Ohio 43081
614-839-4639
614-839-2222 FAX

M Engineering

Wendys
2519 RANDLEMAN ROAD
GREENSBORO, NC, 27406

| REV. | DATE | DESCRIPTION |
|------|------|-------------|
| | | |
| | | |
| | | |

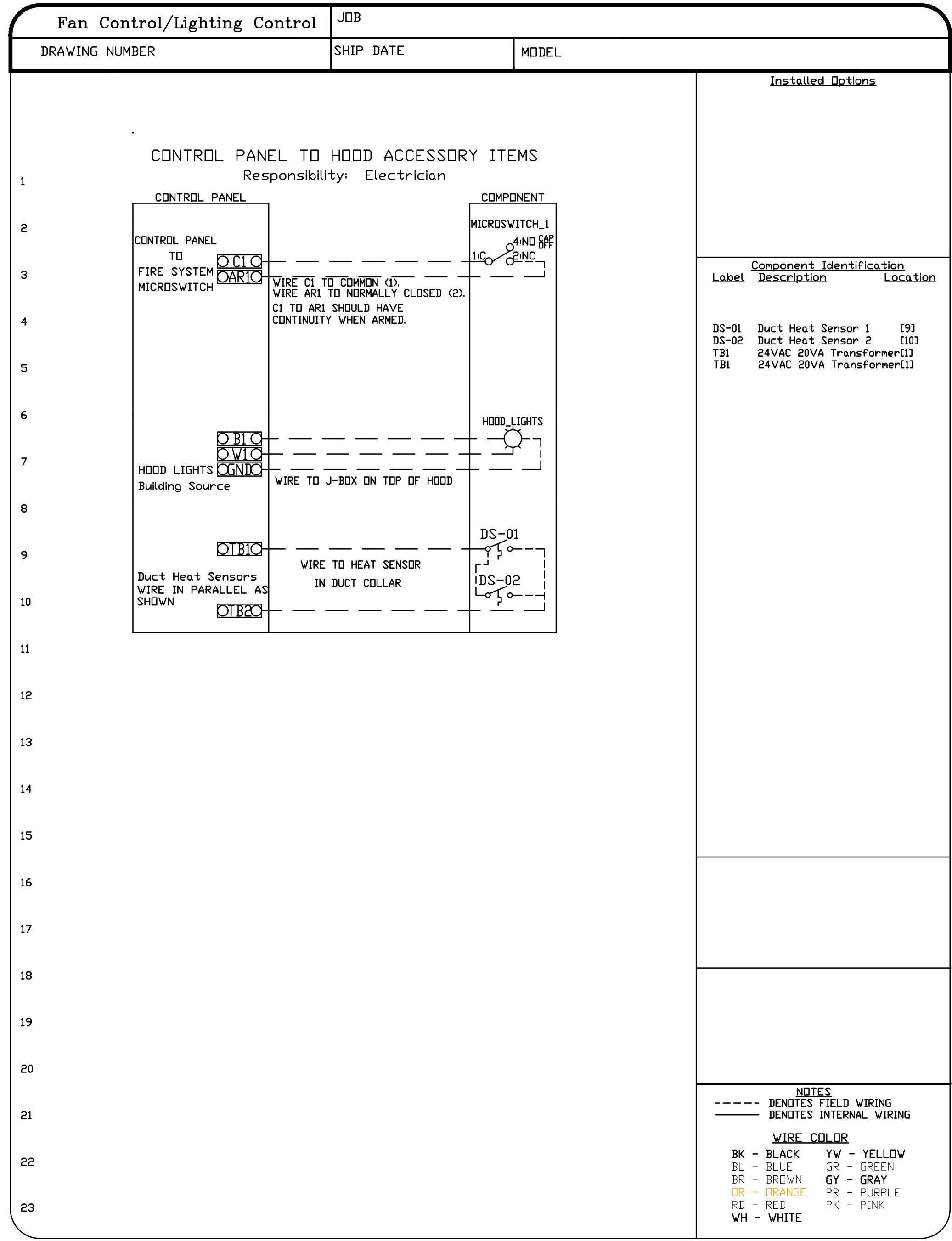
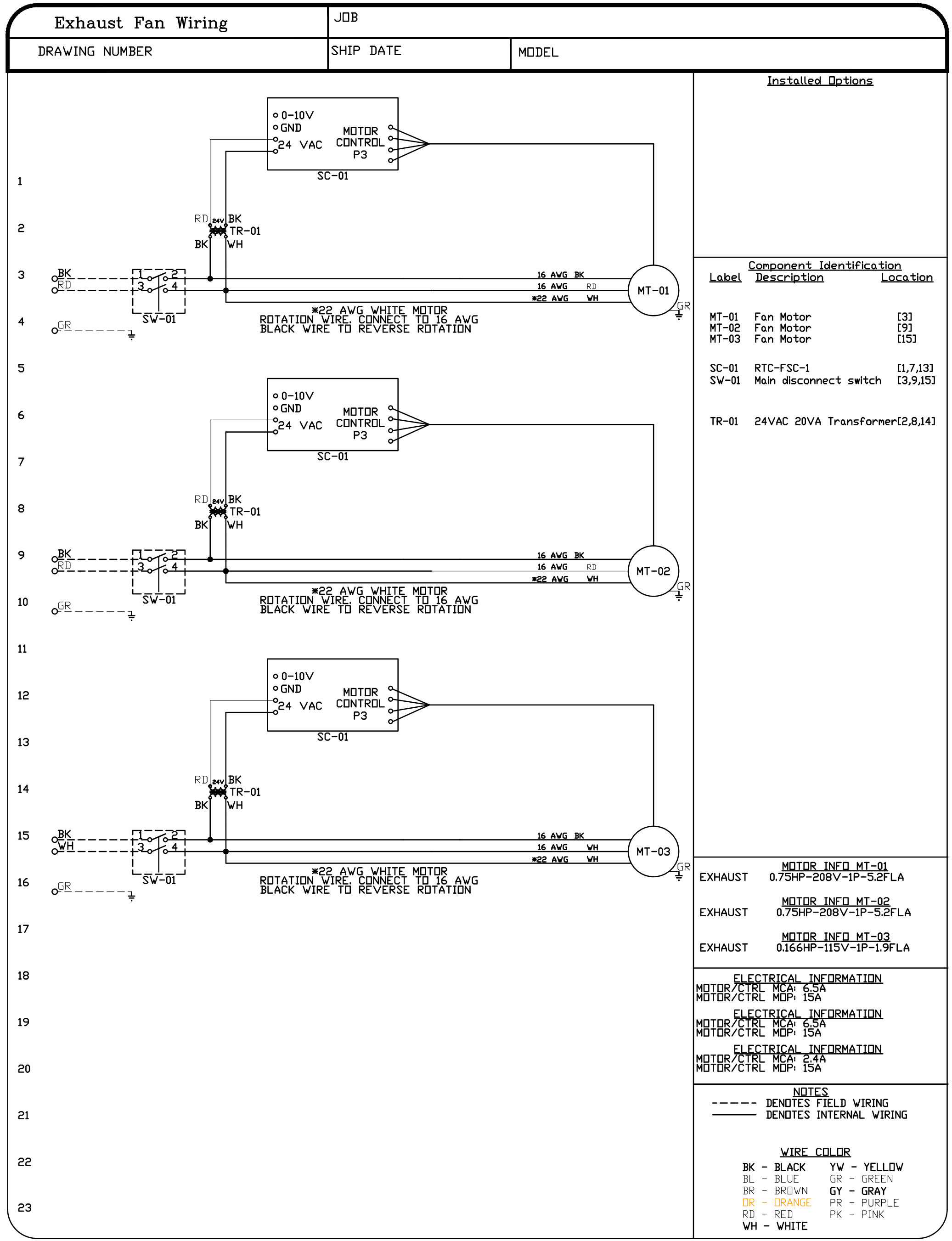
ISSUE DATE: FEBRUARY 2, 2022
PROJECT NUMBER: 00355
DRAWN BY: BLS
CHECKED BY: BLS



SHEET NAME
HOOD DETAILS
SHEET NUMBER

H1.4

12/26/22, 2:32 PM, P:\22-Box\22497714 - Hood Details.dwg, bchelle



| REVISIONS | |
|-------------|------|
| DESCRIPTION | DATE |
| | |
| | |
| | |
| | |

CAPTIVE

Florida National Accounts
 239 N Hunt Club Blvd., STE 201, Leeswood, FL 32779 PHONE: (407) 882-3100 FAX: (407) 227-5813 EMAIL: reg@captivewire.com

Wendys Prototype - DTD Legacy DSG

DATE: 6/25/2021

DWG.#: 4957686

DRAWN BY: JGE60

SCALE: 3/4" = 1'-0"

MASTER DRAWING

SHEET NO. 5

SITE NUMBER: 00355
 BASE MODEL: (2.0) DTO
 ASSET TYPE: FRANCHISE
 CLASSIFICATION: NEW
 OWNER: SCHMIDT GROUP
 BASE VERSION: 2021
 UPGRADE CLASSIFICATION: NEW BUILD
 PROJECT YEAR: 2022
 FURNITURE PACKAGE: (2.0) UM BRITE
 DRAWING RELEASE: SUMMER 2021

Project No. **21-099**

M Engineering

750 Brackeedge Boulevard
 Westerville, Ohio 43081
 614-839-4639
 614-839-2222 FAX

Wendy's

2519 RANDLEMAN ROAD
 GREENSBORO, NC, 27406

| REV. | DATE | DESCRIPTION |
|------|------|-------------|
| | | |
| | | |
| | | |
| | | |

ISSUE DATE: FEBRUARY 2, 2022
 PROJECT NUMBER: 00355
 DRAWN BY: BLS
 CHECKED BY: BLS



SHEET NAME
HOOD DETAILS
 SHEET NUMBER

H1.5

1/28/2022 2:52 PM P:\22-Box\224977115-Hood Details.dwg bshelle