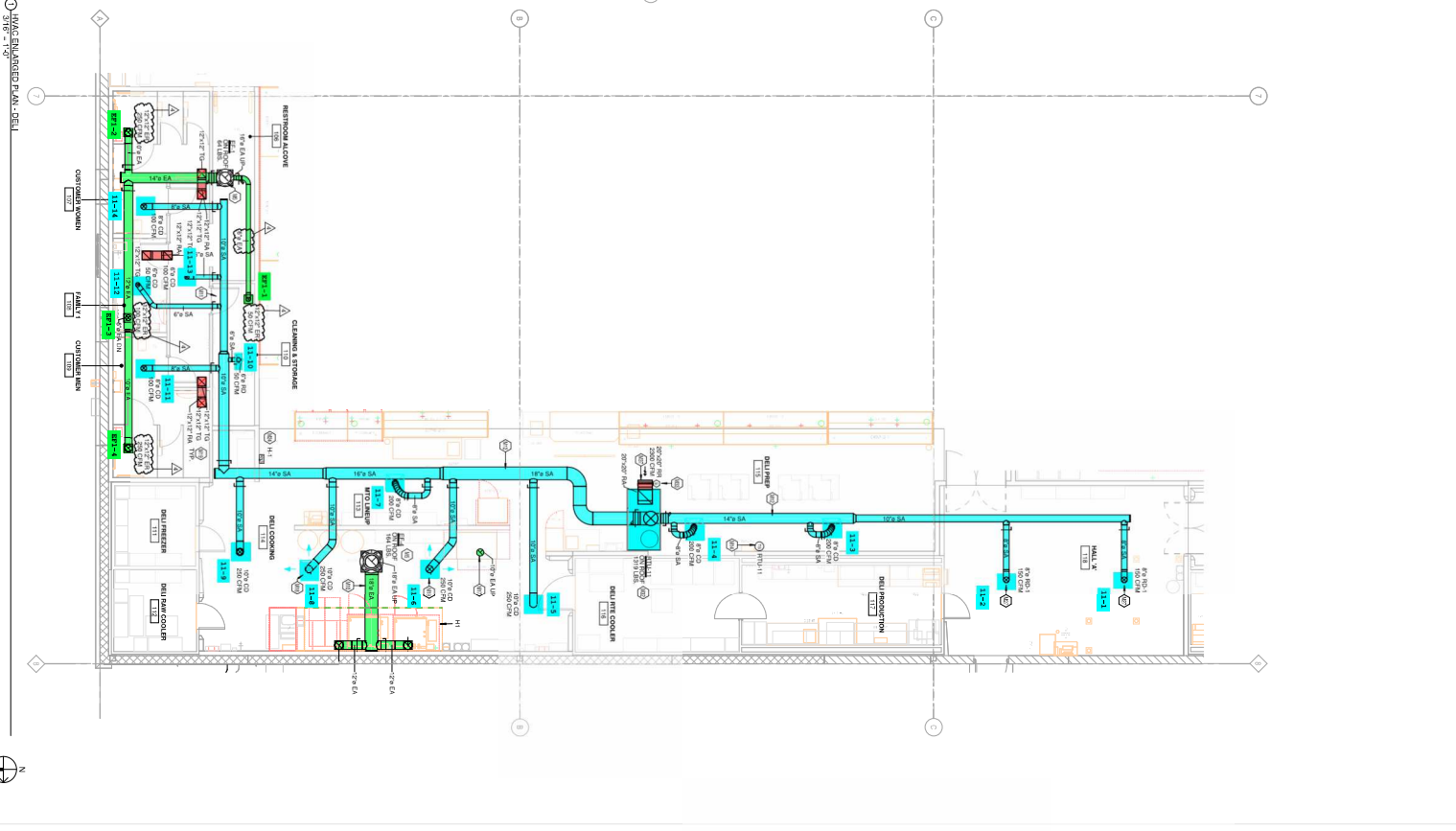
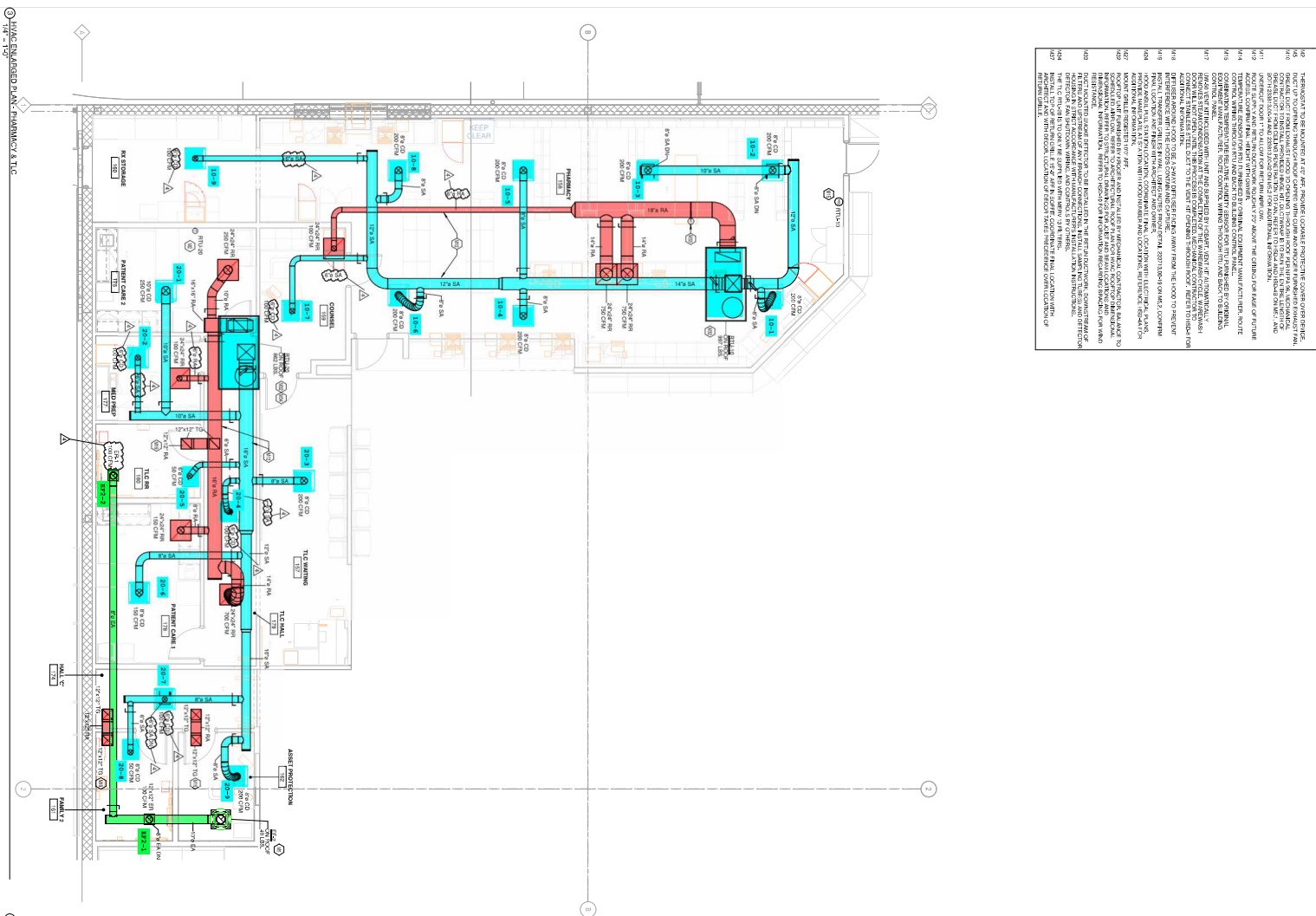


KEYED NOTES

- 401. PHARMACY TO BE MOVED AT 27' AFF. IN ORDER TO MAINTAIN PROTECTIVE COVER OVER REFRIGERATED CASES. REFRIGERATED CASES TO BE MOVED TO PHARMACY FROM PHARMACY TO MAINTAIN PROTECTIVE COVER OVER REFRIGERATED CASES. REFRIGERATED CASES TO BE MOVED TO PHARMACY FROM PHARMACY TO MAINTAIN PROTECTIVE COVER OVER REFRIGERATED CASES.
- 402. PHARMACY TO BE MOVED AT 27' AFF. IN ORDER TO MAINTAIN PROTECTIVE COVER OVER REFRIGERATED CASES. REFRIGERATED CASES TO BE MOVED TO PHARMACY FROM PHARMACY TO MAINTAIN PROTECTIVE COVER OVER REFRIGERATED CASES.
- 403. PHARMACY TO BE MOVED AT 27' AFF. IN ORDER TO MAINTAIN PROTECTIVE COVER OVER REFRIGERATED CASES. REFRIGERATED CASES TO BE MOVED TO PHARMACY FROM PHARMACY TO MAINTAIN PROTECTIVE COVER OVER REFRIGERATED CASES.
- 404. PHARMACY TO BE MOVED AT 27' AFF. IN ORDER TO MAINTAIN PROTECTIVE COVER OVER REFRIGERATED CASES. REFRIGERATED CASES TO BE MOVED TO PHARMACY FROM PHARMACY TO MAINTAIN PROTECTIVE COVER OVER REFRIGERATED CASES.
- 405. PHARMACY TO BE MOVED AT 27' AFF. IN ORDER TO MAINTAIN PROTECTIVE COVER OVER REFRIGERATED CASES. REFRIGERATED CASES TO BE MOVED TO PHARMACY FROM PHARMACY TO MAINTAIN PROTECTIVE COVER OVER REFRIGERATED CASES.
- 406. PHARMACY TO BE MOVED AT 27' AFF. IN ORDER TO MAINTAIN PROTECTIVE COVER OVER REFRIGERATED CASES. REFRIGERATED CASES TO BE MOVED TO PHARMACY FROM PHARMACY TO MAINTAIN PROTECTIVE COVER OVER REFRIGERATED CASES.
- 407. PHARMACY TO BE MOVED AT 27' AFF. IN ORDER TO MAINTAIN PROTECTIVE COVER OVER REFRIGERATED CASES. REFRIGERATED CASES TO BE MOVED TO PHARMACY FROM PHARMACY TO MAINTAIN PROTECTIVE COVER OVER REFRIGERATED CASES.



KLH ENGINEERS
MECHANICAL/ELECTRICAL ENGINEERS
WWW.KLHENGRS.COM
LEXINGTON, KENTUCKY
LOUISVILLE, KENTUCKY
COLUMBUS, OHIO

CR
architecture + design

Kroger

1500 ALEXANDRIA PKWY, SUITE 11
FT. THOMAS, KENTUCKY 41075
859-354-0788 859-442-8059
859-442-8058 FAX

UNIVERSITY OF KY
1000 UNIVERSITY BLVD
LEXINGTON, KY 40502
859-259-1234
WWW.UKY.EDU

UNIVERSITY OF KY
1000 UNIVERSITY BLVD
LEXINGTON, KY 40502
859-259-1234
WWW.UKY.EDU

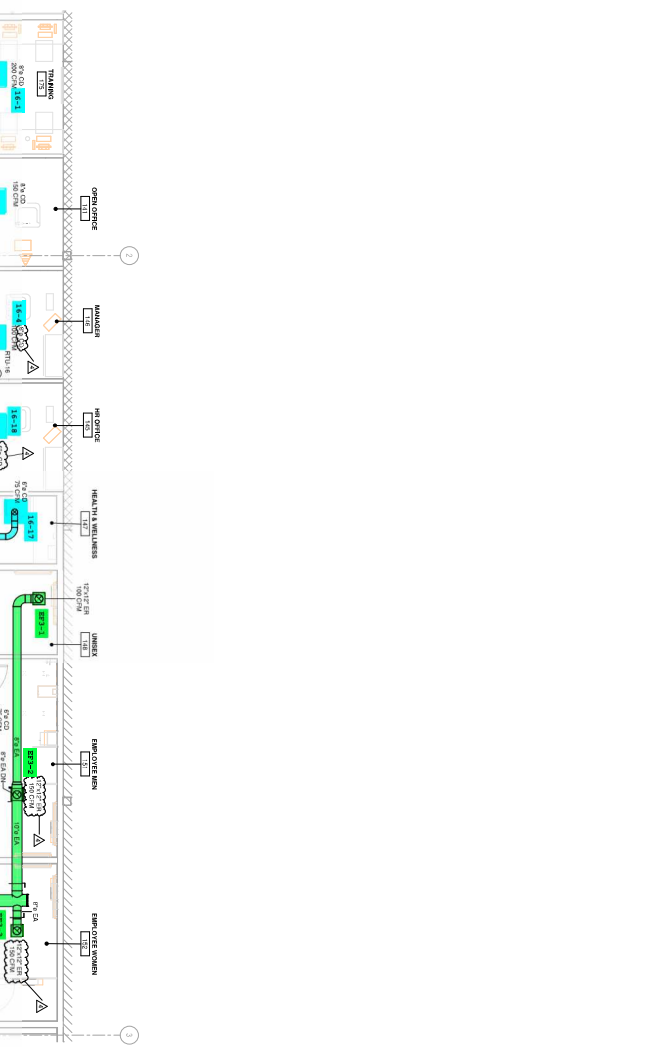
PHARMACY & TIC
M1.3
H.V.A.C. ENLARGED PLANS

KEYED NOTES

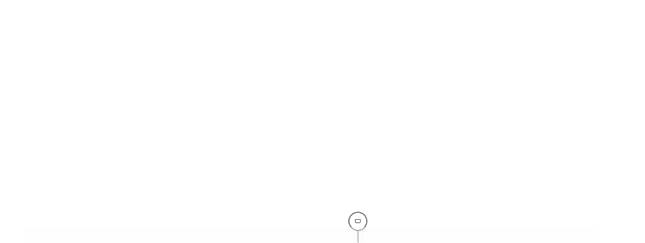
441 EQUIPMENT TO BE SET TO FACTORY/ENGINEER'S INSTALLATION
 442 REFRIGERANT TO BE PURCHASED FROM THE MANUFACTURER
 443 REFRIGERANT TO BE PURCHASED FROM THE MANUFACTURER
 444 REFRIGERANT TO BE PURCHASED FROM THE MANUFACTURER
 445 REFRIGERANT TO BE PURCHASED FROM THE MANUFACTURER
 446 REFRIGERANT TO BE PURCHASED FROM THE MANUFACTURER
 447 REFRIGERANT TO BE PURCHASED FROM THE MANUFACTURER
 448 REFRIGERANT TO BE PURCHASED FROM THE MANUFACTURER
 449 REFRIGERANT TO BE PURCHASED FROM THE MANUFACTURER
 450 REFRIGERANT TO BE PURCHASED FROM THE MANUFACTURER
 451 REFRIGERANT TO BE PURCHASED FROM THE MANUFACTURER
 452 REFRIGERANT TO BE PURCHASED FROM THE MANUFACTURER
 453 REFRIGERANT TO BE PURCHASED FROM THE MANUFACTURER
 454 REFRIGERANT TO BE PURCHASED FROM THE MANUFACTURER
 455 REFRIGERANT TO BE PURCHASED FROM THE MANUFACTURER
 456 REFRIGERANT TO BE PURCHASED FROM THE MANUFACTURER
 457 REFRIGERANT TO BE PURCHASED FROM THE MANUFACTURER
 458 REFRIGERANT TO BE PURCHASED FROM THE MANUFACTURER
 459 REFRIGERANT TO BE PURCHASED FROM THE MANUFACTURER
 460 REFRIGERANT TO BE PURCHASED FROM THE MANUFACTURER

KLH ENGINEERS
 MECHANICAL/ELECTRICAL ENGINEERS
 WWW.KLHENGRS.COM
 LEXINGTON, KENTUCKY
 LOUISVILLE, KENTUCKY
 COLUMBUS, OHIO

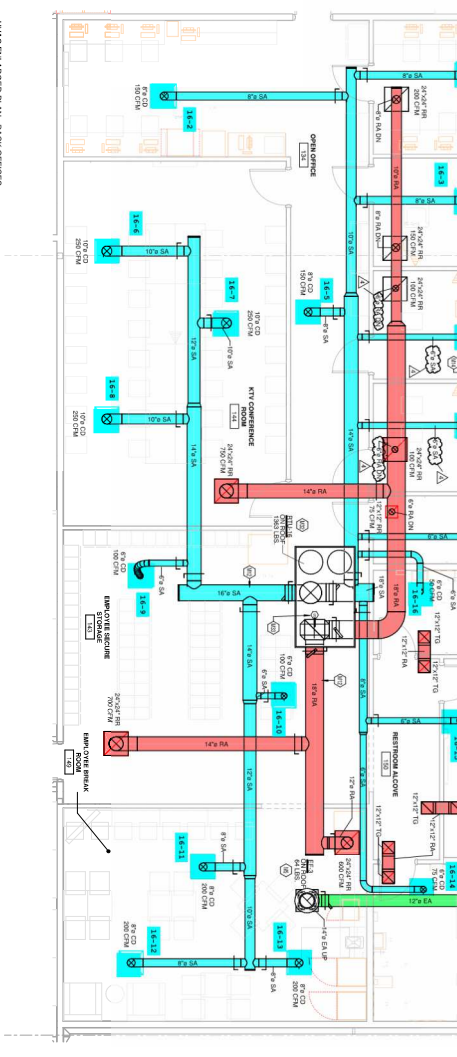
CR
 architecture + design



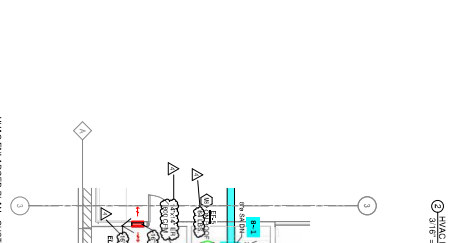
2 MAKE ENLARGED PLAN - BAKERY



3 MAKE ENLARGED PLAN - CUSTOMER SERVICE



4 MAKE ENLARGED PLAN - BACK OFFICES



5 MAKE ENLARGED PLAN - CUSTOMER SERVICE