

GREASE EXHAUST DUCT SCHEDULE										
DUCT DESIGNATION	CU.FT. PER MIN (CFM)	DUCT SIZE Ø"	AREA (SQ.FT.)	DUCT VELOCITY (FPM)	STATIC PRESSURE PER 100FT.	DUCT LENGTH (FT)	EQUIVALENT LENGTH (FT)	DUCT PRES. DROP	HOOD PRES. DROP	TOTAL PRES. DROP
1	2640	16"	1.394	1890.8	0.31	20	25	0.0775	0.963	1.0405
TOTAL PRESSURE DROP FOR EF-1 SYSTEM = 1.41"					FAN EXTERNAL STATIC PRESSURE = 1.00"					

GREASE EXHAUST DUCT SCHEDULE										
DUCT DESIGNATION	CU.FT. PER MIN (CFM)	DUCT SIZE Ø"	AREA (SQ.FT.)	DUCT VELOCITY (FPM)	STATIC PRESSURE PER 100FT.	DUCT LENGTH (FT)	EQUIVALENT LENGTH (FT)	DUCT PRES. DROP	HOOD PRES. DROP	TOTAL PRES. DROP
2	500	10"	0.5454	916.7	0.14	40	50	0.07	0.063	0.133
TOTAL PRESSURE DROP FOR EF-2 SYSTEM = 0.709"					FAN EXTERNAL STATIC PRESSURE = 1.00"					

AIR BALANCE SCHEDULE					
SYMB.	SUPPLY AIR-CFM	RETURN AIR-CFM	OUTSIDE AIR-CFM	EXHAUST AIR-CFM	BLDG. PRESS.
DOAS 1	0	0	3140	0	3140
KEF 1				-2440	-2440
2				-500	-500
TOTAL KITCHEN	0	0	3140	-3140	0
DINING				0	
DOAS 2	3424	2720	704	0	704
EF 1				-150	-150
TOTAL	3424	2720	704	-150	554

NOTE:
EF-1 SHALL BE INTERLOCKED WITH DOAS-1.
EF-2 SHALL BE INTERLOCKED WITH DOAS-2.

EQUIPMENT UNDER HOOD #1:

- FRENCH FRY WARMER
MANUFACTURER: AVANTCO ITEM#177FFDS1.
- COUNTERTOP GRIDDLE
MANUFACTURER: JADE BOILER MODEL#JGT-2472.
- FRYERS
MANUFACTURER: PIFCO MODEL#SG14R.
- COUNTER TOP BURNERS
MANUFACTURER: CPG MODEL#HPSU212 2 BURNER.
- COUNTERTOP CHARBROILER
MANUFACTURER: JADE MODEL JB-24.

EQUIPMENT UNDER HOOD #2:

- 6 BURNER RANGE
MANUFACTURER: CPG MODEL#35136CPG680BNAT.

GREASE DUCT SYSTEMS INSTALLATION NOTES

- FIELD APPLIED OR FACTORY BUILT GREASE DUCT ENCLOSURE SHALL BE INSTALLED PER THE LATEST MANUFACTURER'S INSTALLATION INSTRUCTIONS AND IN COMPLIANCE WITH TERMS OF ITS LISTINGS.
- ALL END CUTS OR CUTS IN THE FOIL JACKET OF FIELD APPLIED GREASE DUCT ENCLOSURE SHALL BE SEALED PER MANUFACTURER'S RECOMMENDATIONS.
- ALL INSTALLATIONS SHALL BE COMPLETELY ACCESSIBLE FOR VISUAL INSPECTION.
- AT TIME OF INSPECTION THE FIELD APPLIED OR FIELD BUILT GREASE DUCT ENCLOSURE INSTALLATION INSTRUCTIONS SHALL BE MADE AVAILABLE AT THE JOB SITE.
- FIRE DEPARTMENT APPROVAL SHALL BE REQUIRED ON FIRE PROTECTION SYSTEM FOR GREASE HOODS AND DUCTS AS REQUIRED BY SECTION 513 OF MECHANICAL CODE AND AS REQUIRED BY FIRE CODE.
- ALL FIRE-EXTINGUISHING SYSTEMS SHALL BE INTERCONNECTED TO THE FUEL OR CURRENT SUPPLY SO THAT THE FUEL OR CURRENT IS AUTOMATICALLY SHUT OFF TO ALL EQUIPMENT UNDER THE HOOD WHEN SYSTEM IS ACTIVATED.
- OWNER OF ESTABLISHMENT SHALL BE RESPONSIBLE FOR CLEANLINESS, MAINTENANCE AND INSPECTION OF KITCHEN EXHAUST SYSTEM, FIRE PROTECTION AND COOKING EQUIPMENT.
- A DRAWING OF THE EXHAUST SYSTEMS INSTALLATION ALONG WITH THE COPY OF OPERATING INSTRUCTIONS FOR SUBASSEMBLES AND COMPONENTS USED IN THE EXHAUST SYSTEMS, INCLUDING ELECTRICAL SCHEMATICS, SHALL BE AVAILABLE ON PREMISES.
- ALL SEAMS, JOINTS AND PENETRATIONS OF THE HOOD ENCLOSURE THAT DIRECT AND CAPTURE GREASE SHALL HAVE A LIQUID TIGHT CONTINUOUS EXTERNAL WELD TO THE LOWER OUTERMOST PERIMETER OF THE HOOD.
- DUCT SYSTEM SHOULD BE INSTALLED SO GREASE CAN NOT BE POCKETED. THE SYSTEM SHALL BE SLOPE NOT LESS THAN 1/4" PER FOOT TOWARDS THE HOOD OR TOWARDS THE GREASE RESERVOIR.
- HOOD EXHAUST FAN SHALL CONTINUE TO OPERATE AFTER THE EXTINGUISHING SYSTEM HAS BEEN ACTIVATED. UNLESS FAN SHUTDOWN IS REQUIRED BY A LISTED COMPONENT OF THE VENTILATION SYSTEM.

- THE MINIMUM RATE OF OUTDOOR AIR FOR MECHANICALLY VENTILATED SPACES SHALL BE SUPPLIED TO EACH SPACE AT ALL TIMES WHEN THE SPACE IS USUALLY OCCUPIED.
- THE CONTRACTOR SHALL PERFORM THE WORK IN ACCORDANCE WITH ASHRAE .2019 CMC AND LATEST LOCAL AND STATE STANDARDS .
- DRAWINGS FROM CAPTIVEAIRE IN THIS SET IS FOR REFERENCE ONLY. CONTRACTOR TO FIELD VERIFY ALL DIMENSIONS AND COORDINATE WITH CAPTIVEAIRE PRIOR TO FABRICATION. CONTRACTOR TO SUBMIT CAPTIVE AIR DRAWINGS TO PEI FOR SHOP DRAWING REVIEW AND APPROVAL.
- THE DRAWINGS ARE ESSENTIALLY DIAGRAMMATIC . PROVIDE OFFSETS IN THE DUCTWORK AS NECESSARY TO CONFORM TO A STRUCTURE . AVOID OBSTRUCTIONS, PRESERVE HEADROOM AND KEEP PASSAGEWAYS CLEAR.
- COORDINATE ALL DUCTWORK AND MECHANICAL SYSTEMS WITH STRUCTURE, PLUMBING, SITE PLAN AND ELECTRICAL SYSTEMS; ANY AND ALL CONFLICT SHALL BE RESOLVED IN WRITING WITH ENGINEER PRIOR TO INSTALLATION.
- ALL DUCT PENETRATION SHALL BE COORDINATED WITH ARCHITECTURAL AND STRUCTURAL DRAWINGS.

GENERAL NOTES 3

SCALE NONE

- 16" Ø GREASE DUCT TO HOOD IN 1 HOUR FIRE RATED ENCLOSURE TO KEF-1 ON THE ROOF.
- 10" Ø GREASE DUCT TO HOOD IN 1 HOUR FIRE RATED ENCLOSURE TO KEF-2 ON THE ROOF.
- 14 GA. CARBON STEEL GREASE EXHAUST DUCTWORK CONTIN. WELDED SEAMS.
- MECHANICAL CONTRACTOR SHALL VERIFY EXACT LOCATION OF SUPPLY & RETURN DUCT RISERS . MAKE PROPER ADJUSTMENTS IF PLANS DOES NOT AGREE WITH ACTUAL CONDITIONS IN THE FIELD. SUBMIT SHOP DRAWINGS PRIOR TO FABRICATING OR PURCHASING DUCTWORK.
- 38"X20" DUCT UTR TRANSITION TO DOAS-1 SUPPLY CONNECTION IN ROOF CURB.
- 30"X20" DUCT UTR TRANSITION TO DOAS-2 SUPPLY CONNECTION IN ROOF CURB.
- 36"X10" DUCT UTR TRANSITION TO DOAS-2 RETURN CONNECTION IN ROOF CURB.
- PROVIDE AIR TRANSFER GRILLE.
- PROVIDE 12"X12" DOOR LOUVER.
- AIR VELOCITY THROUGH ANY DUCT SHALL NOT BE LESS THAN 500 FPM AND NO MORE THAN 2,500 FPM. (CMC-95.511.2.1)

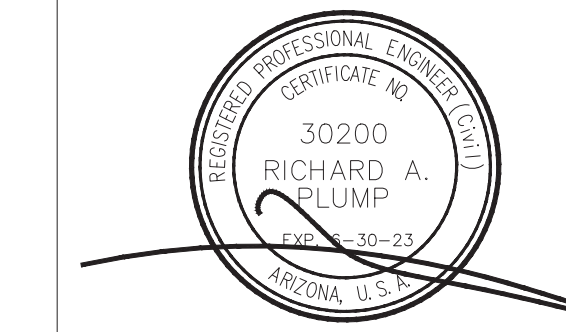
CITY APPROVAL

THESE DRAWINGS AND SPECIFICATIONS AND IDEAS, DESIGNS AND ARRANGEMENTS REPRESENTED THEREBY ARE AND SHALL REMAIN THE PROPERTY OF GWA ARCHITECTURE, INC. AND NO PART THEREOF SHALL BE COPIED, DISCLOSED TO OTHERS OR USED IN CONNECTION WITH ANY WORK OR PROJECT OTHER THAN THE SPECIFIC PROJECT FOR WHICH THEY HAVE BEEN PREPARED AND DEVELOPED WITHOUT THE WRITTEN CONSENT OF GWA ARCHITECTURE, INC. VISUAL CONTACT WITH THESE DRAWINGS AND SPECIFICATIONS SHALL CONSTITUTE CONCLUSIVE EVIDENCE OF THESE RESTRICTIONS. WRITTEN DIMENSIONS ON THESE DRAWINGS SHALL HAVE PRECEDENCE OVER SCALED DIMENSIONS. CONTRACTORS SHALL VERIFY AND BE RESPONSIBLE FOR ALL DIMENSIONS AND CONDITIONS ON THE JOB. AND THE OFFICE MUST BE NOTIFIED OF ANY VARIATIONS FROM THE DIMENSIONS AND CONDITIONS SHOWN BY THESE DRAWINGS. SHOP DRAWINGS MUST BE SUBMITTED TO THIS OFFICE FOR REVIEW BEFORE PROCEEDING WITH THE FABRICATION.

ARCHITECT



STAMP



PROJECT NAME/ADDRESS:

SCOTTSDALE, AZ
8980 N. 90TH STREET
SUITE 124
SCOTTSDALE, AZ 85256

REVISION / ISSUE DATE

NO.	DATE	DESCRIPTION
1	2/20/23	CITY SUB

JOB NUMBER

ARCH PROJECT #: 22-105

DRAWN BY	CHECKED BY
STAFF	JP

SHEET CONTENT

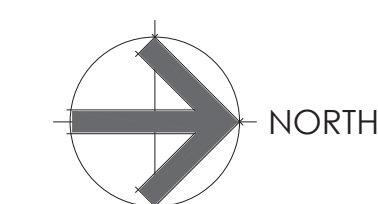
MECHANICAL FLOOR PLAN

SHEET NO.

M100

MECHANICAL FLOOR PLAN 1
SCALE 1/4"=1'-0"

KEYNOTES 2
SCALE NONE



HOOD INFORMATION - JOB#5766080

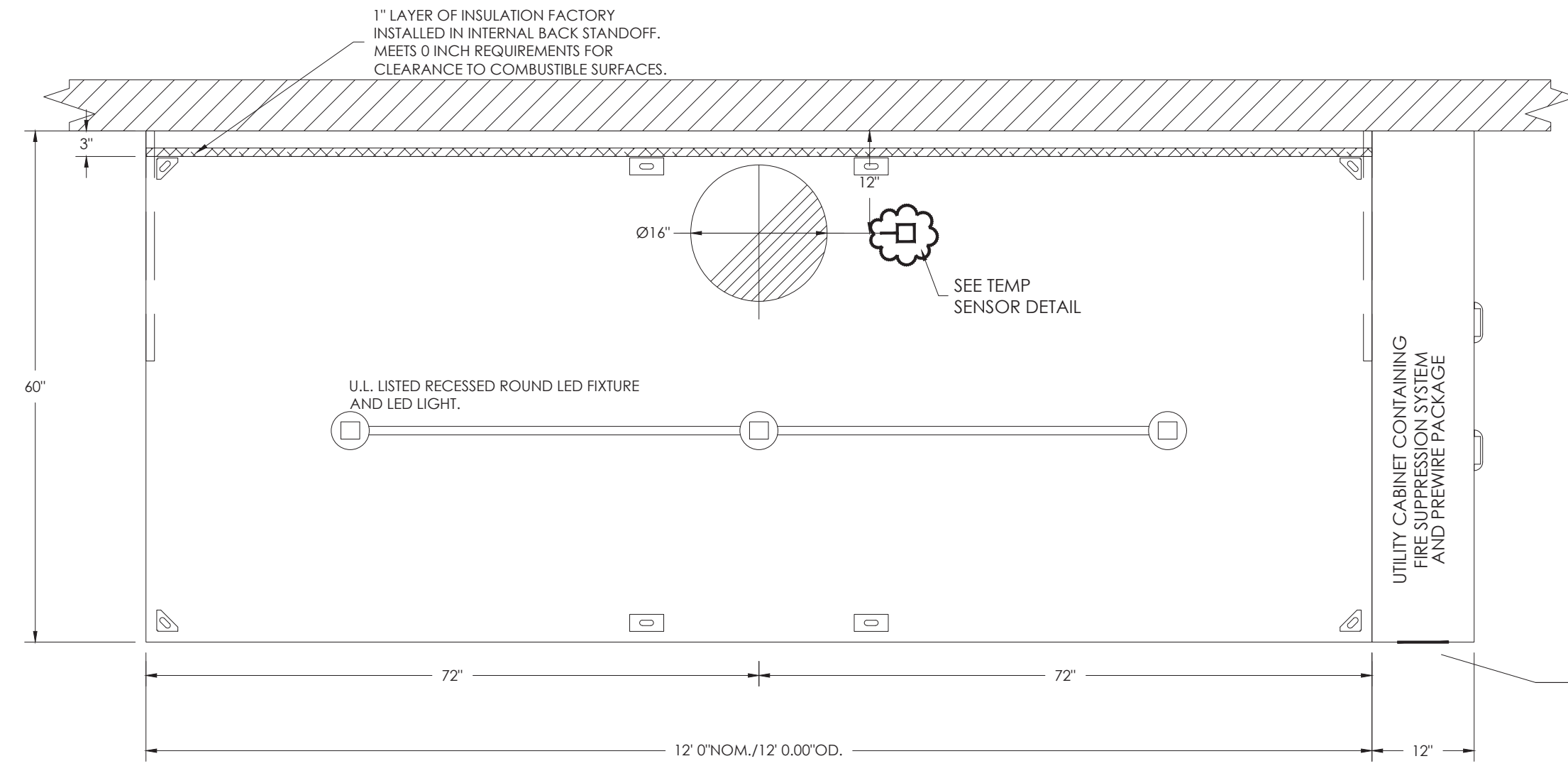
HOOD NO	TAG	MODEL	MANUFACTURER	LENGTH	MAX COOKING TEMP	TYPE	APPLIANCE DUTY	DESIGN CFM/FT	TOTAL EXH CFM	EXHAUST PLENUM RISER(S)				HOOD CONSTRUCTION	HOOD CONFIG		
										WIDTH	LENG	HEIGHT	DIA		CFM	VEL	SP
1	ITEM #0023	6030 ND-2	CAPTIVEAIRE	12' 0"	600 DEG	I	HEAVY	220	2640	4"	16"	2640	1891	-0.963'	430 SS WHERE EXPOSED	ALONE	ALONE
2	ITEM #0070	4830 VHB-G	CAPTIVEAIRE	4' 0"	700 DEG	II	N/A	125	500	4"	10"	500	917	-0.063'	430 SS 100%	ALONE	ALONE

HOOD INFORMATION

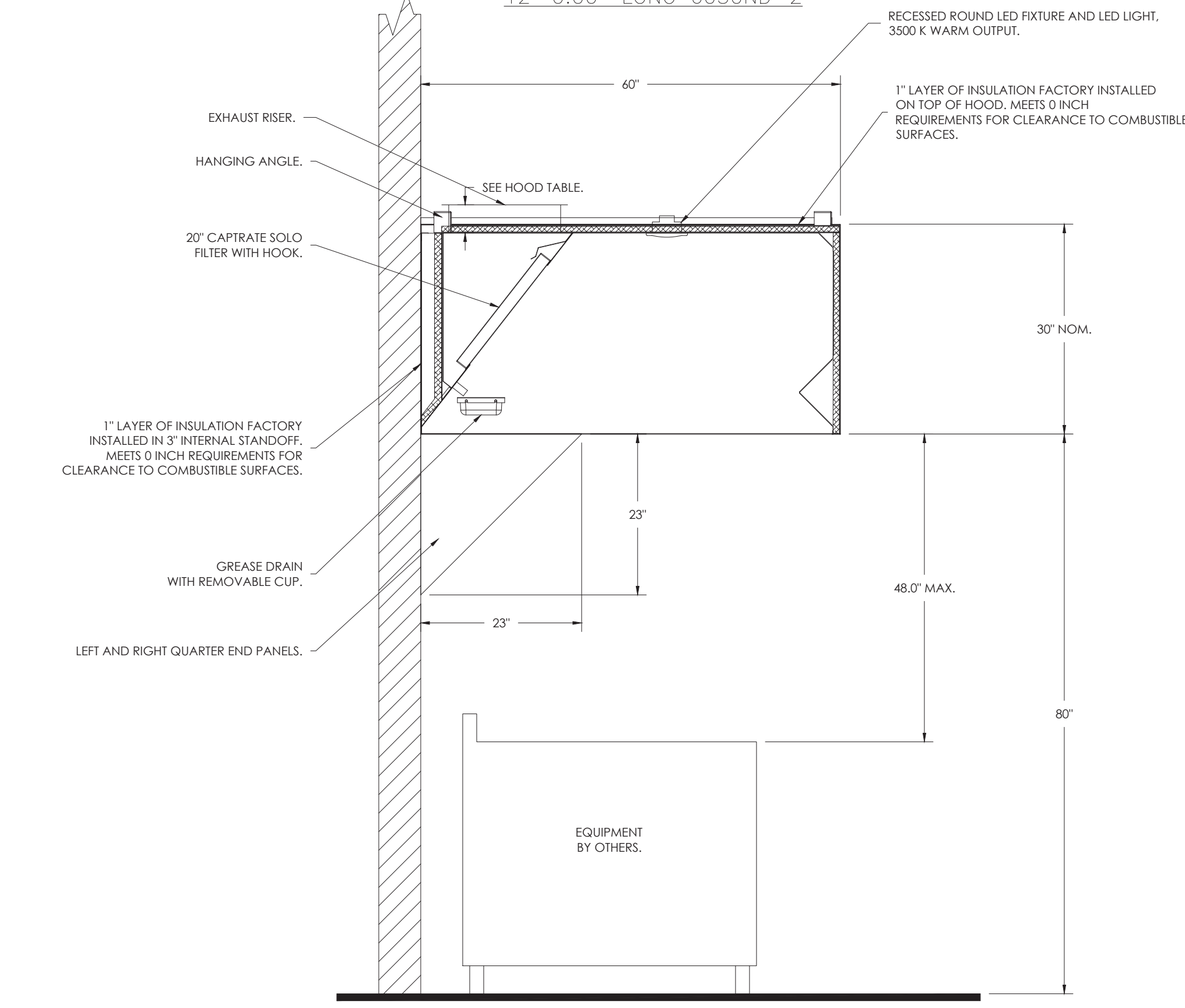
HOOD NO	TAG	TYPE	FILTER(S)			EFFICIENCY @ 7 MICRONS	QTY	LIGHT(S)			UTILITY CABINET(S)			FIRE SYSTEM	ELECTRICAL	SWITCHES	FIRE SYSTEM PIPING	HOOD HANGING WEIGHT
			QTY	HEIGHT	LENGTH			TYPE	WIRE GUARD	LOCATION	SIZE	TYPE	SIZE					
1	ITEM #0023	CAPTRATE SOLO FILTER	9	20"	16"	85% SEE FILTER SPEC	3	RECESSED ROUND	NO	RIGHT	12"x60"x30"	TANK FS	4.0/4.0				YES	1020 LBS
2	ITEM #0070						0										NO	167 LBS

HOOD OPTIONS

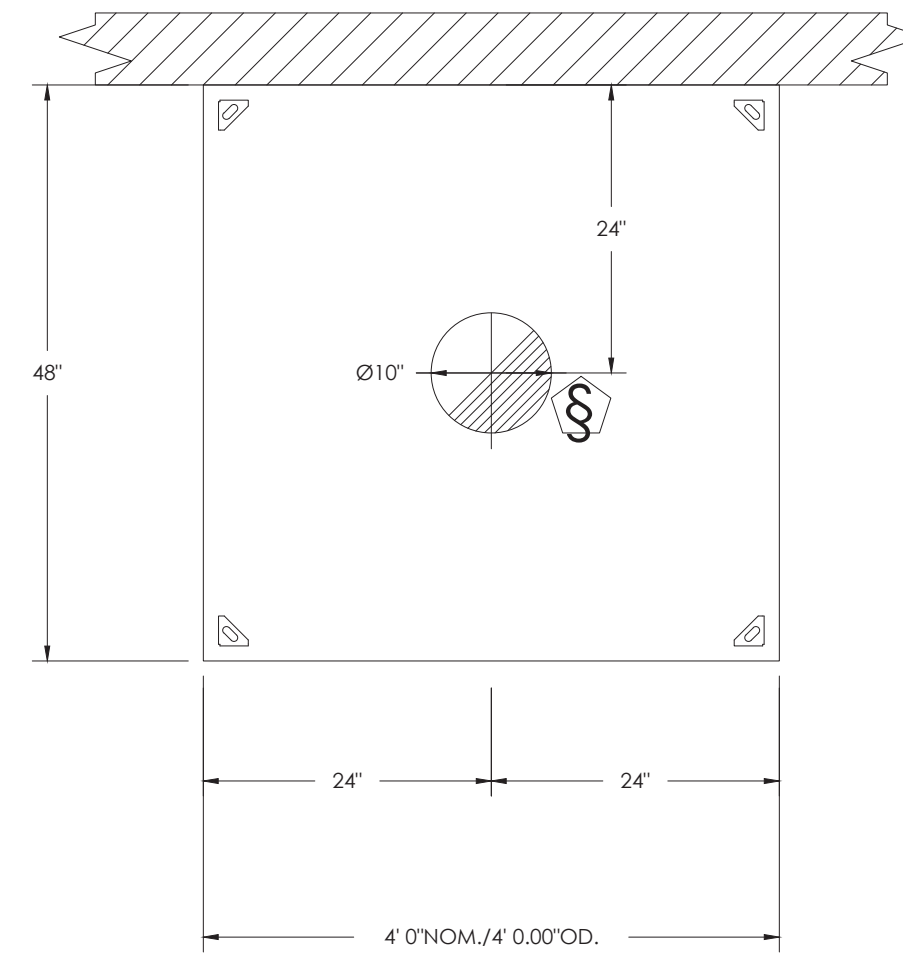
HOOD NO	TAG	OPTION
1	ITEM #0023	RIGHT QUARTER END PANEL 23" TOP WIDTH, 0" BOTTOM WIDTH, 23" HIGH 430 SS. LEFT QUARTER END PANEL 23" TOP WIDTH, 0" BOTTOM WIDTH, 23" HIGH 430 SS. INSULATION FOR TOP OF HOOD. STRUCTURAL FRONT PANEL. INSULATION FOR BACK OF HOOD. RISER SENSOR INSTALL 6IN PLEN.



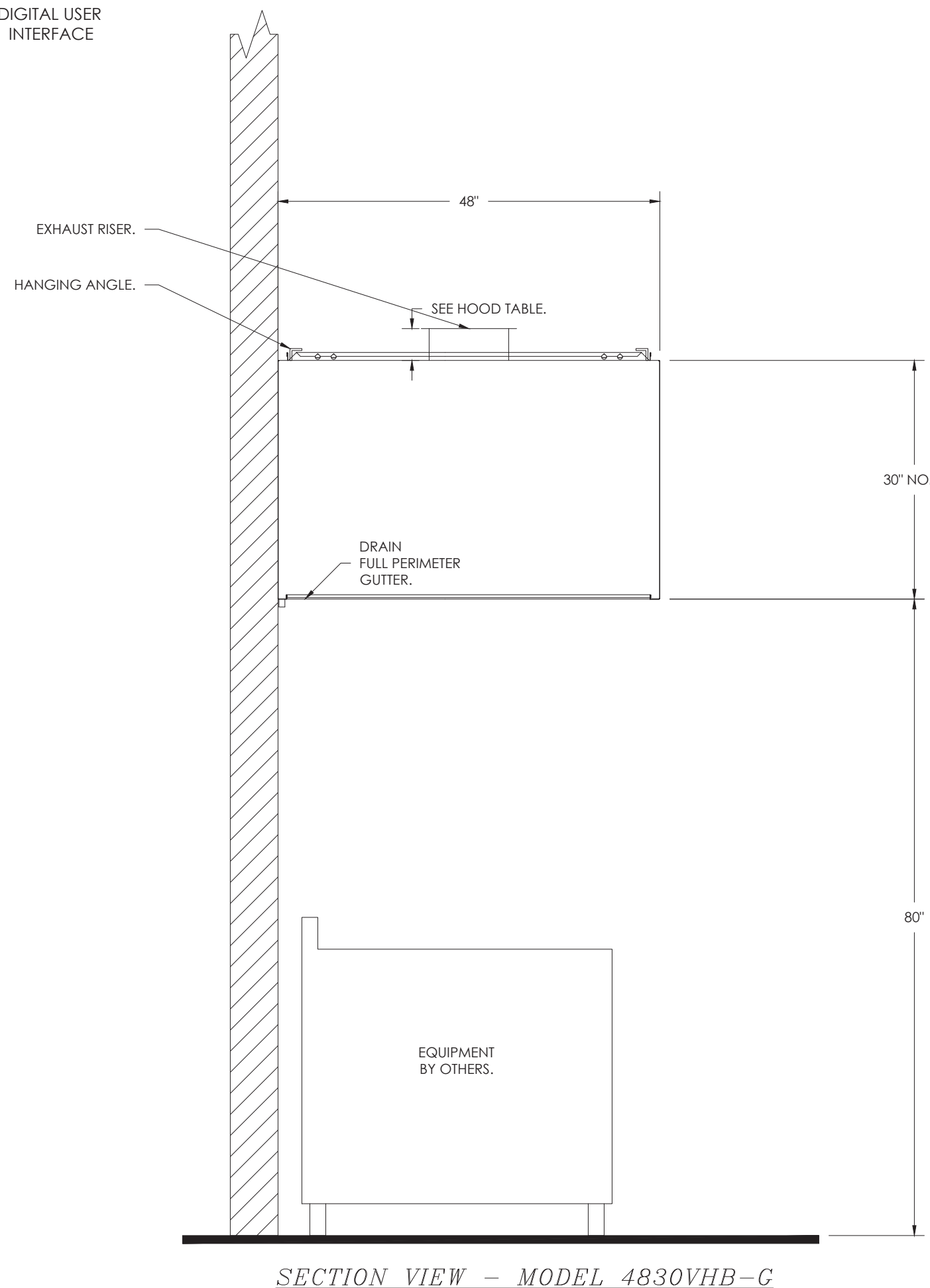
PLAN VIEW - HOOD #1
12' 0.00" LONG 6030ND-2



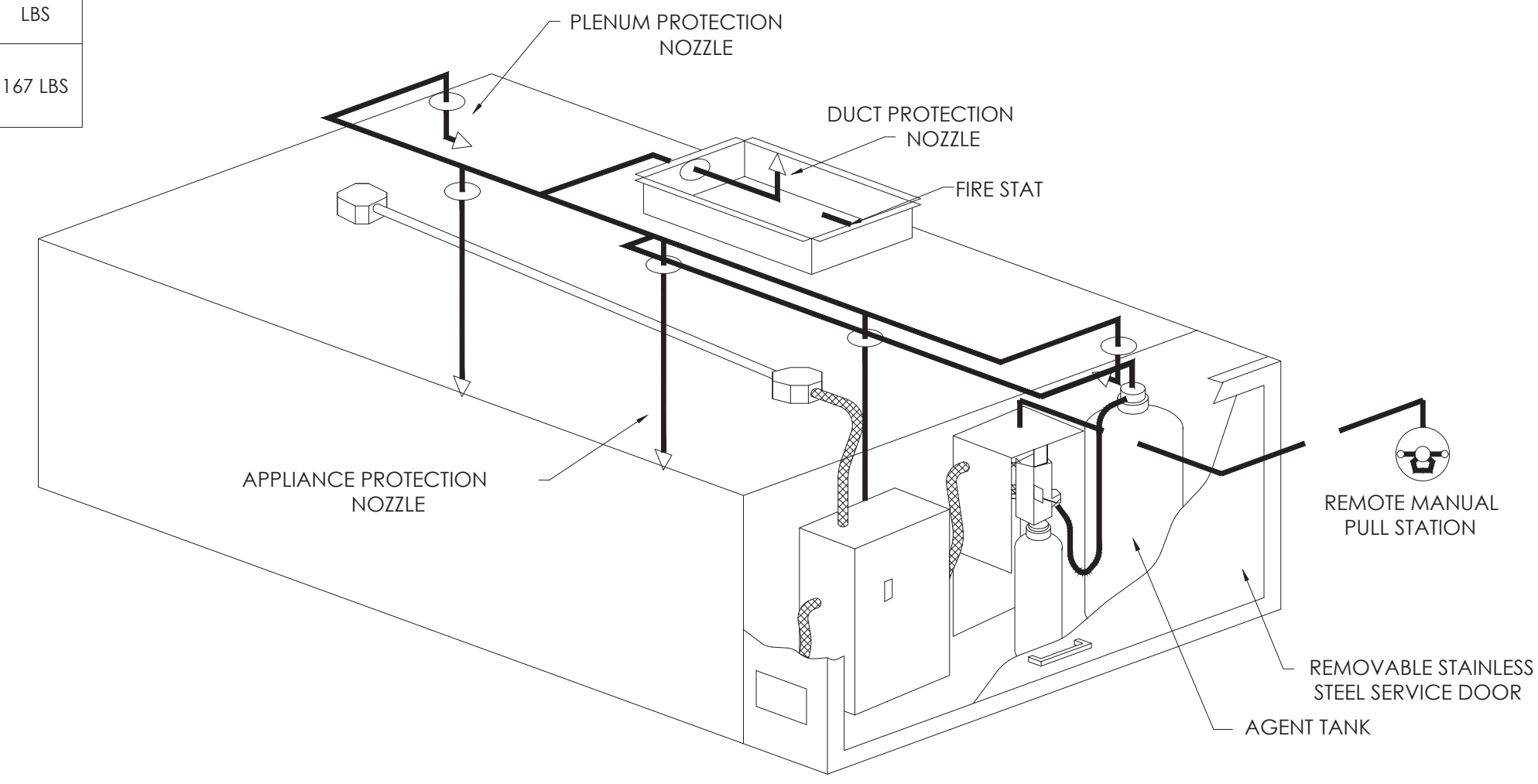
SECTION VIEW - MODEL 6030ND-2
HOOD - #1 (ITEM #0023)



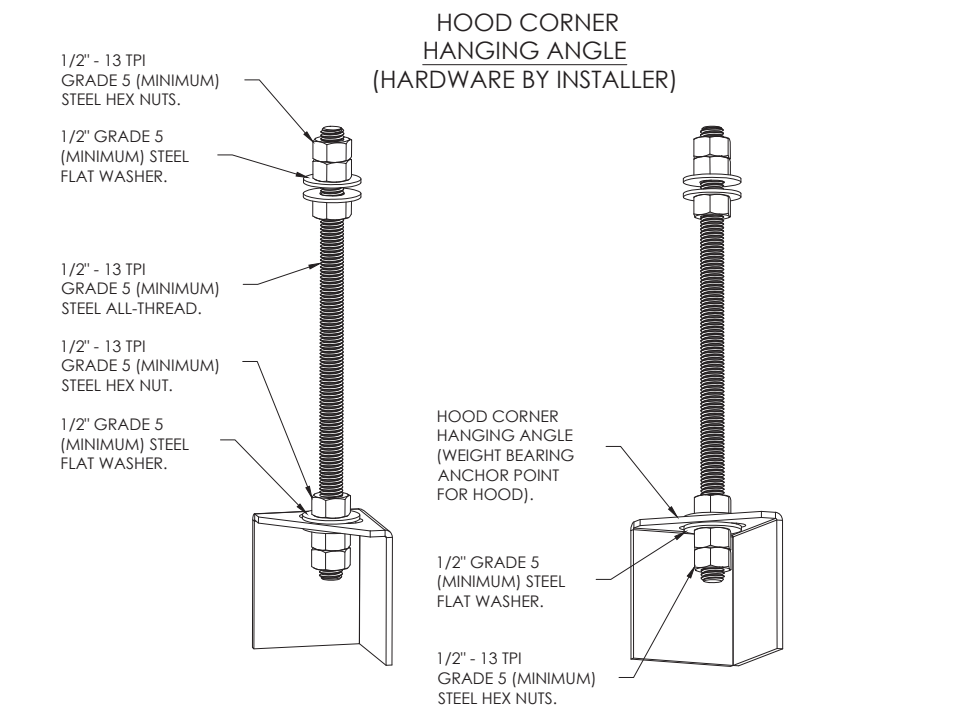
PLAN VIEW - HOOD #2 (ITEM #0070)
4' 0.00" LONG 4830VHB-G



SECTION VIEW - MODEL 4830VHB-G
HOOD - #2 (ITEM #0070)

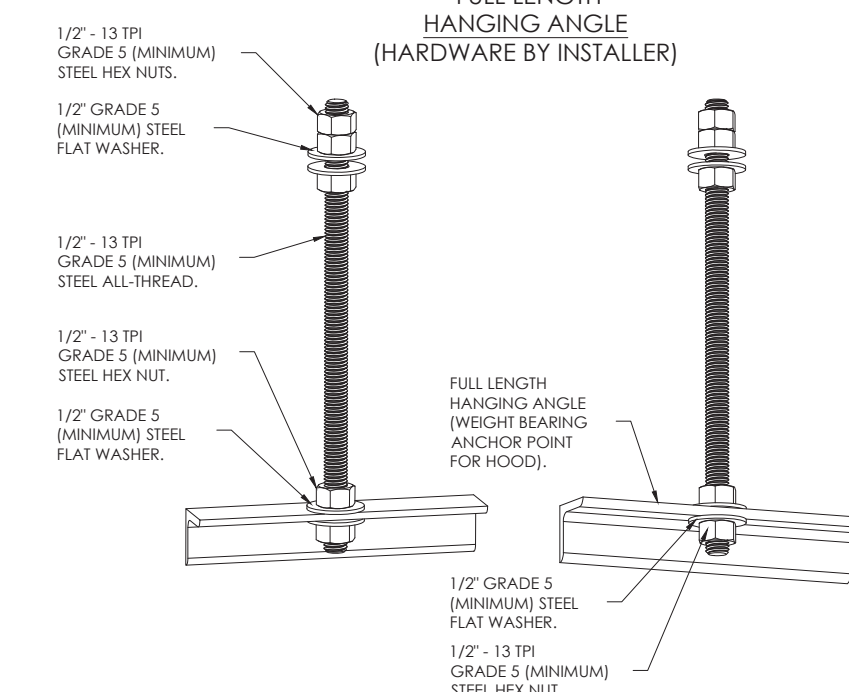


TANK WET CHEMICAL SYSTEM LAYOUT



ASSEMBLY INSTRUCTIONS

HANGING ANGLE MUST BE SUPPORTED WITH 1/2" - 13 TPI GRADE 5 (MINIMUM) ALL-THREAD, SANDWICH HANGING ANGLES AND CEILING ANCHOR POINTS WITH 1/2" GRADE 5 (MINIMUM) STEEL FLAT WASHERS AND 1/2" - 13 TPI GRADE 5 (MINIMUM) HEX NUTS AS SHOWN. MUST USE DOUBLED HEX NUT CONFIGURATION BENEATH HOOD HANGING ANGLES AND ABOVE CEILING ANCHORS. MAINTAIN 1/4" OF EXPOSED THREADS BENEATH BOTTOM HEX NUT. TORQUE ALL HEX NUTS TO 57 FT-LBS.



ASSEMBLY INSTRUCTIONS

HANGING ANGLE MUST BE SUPPORTED WITH 1/2" - 13 TPI GRADE 5 (MINIMUM) ALL-THREAD, SANDWICH HANGING ANGLES AND CEILING ANCHOR POINTS WITH 1/2" GRADE 5 (MINIMUM) STEEL FLAT WASHERS AND 1/2" - 13 TPI GRADE 5 (MINIMUM) HEX NUTS AS SHOWN. MUST USE DOUBLED HEX NUT CONFIGURATION ABOVE CEILING ANCHORS. SINGLE HEX NUT BENEATH HANGING ANGLE IS ACCEPTABLE FOR FULL LENGTH HANGING ANGLES. MAINTAIN 1/4" OF EXPOSED THREADS BENEATH BOTTOM HEX NUT. TORQUE ALL HEX NUTS TO 57 FT-LBS.

REVISIONS	
NO.	DESCRIPTION

CAPTIVEAIRE
www.captiveaire.com
Oregon Office
2702 NE 14th Ave., Suite 2, Vancouver, WA, 98684 PHONE: (503) 828-5418 FAX: (503) 227-5983 EMAIL: reg@capitveaire.com

LITTLE FIG - SCOTTSDALE, AZ
8980 North 90th Street, # 124
Scottsdale, AZ, 85258

DATE: 1/9/2023
DWG.#: 5766080
DRAWN BY: kcurtis
SCALE: 3/4" = 1'-0"
MASTER DRAWING
SHEET NO. 1

CITY APPROVAL

THESE DRAWINGS AND SPECIFICATIONS AND IDEAS, DESIGNS AND ARRANGEMENTS REPRESENTED THEREBY ARE AND SHALL REMAIN THE PROPERTY OF GWA ARCHITECTURE, INC. AND NO PART THEREOF SHALL BE COPIED, DISCLOSED TO OTHERS OR USED IN CONNECTION WITH ANY WORK OR PROJECT OTHER THAN THE SPECIFIC PROJECT FOR WHICH THEY HAVE BEEN PREPARED AND DEVELOPED WITHOUT THE WRITTEN CONSENT OF GWA ARCHITECTURE, INC. VISUAL CONTACT WITH THESE DRAWINGS AND SPECIFICATIONS SHALL CONSTITUTE CONCLUSIVE EVIDENCE OF THESE RESTRICTIONS. WRITTEN DIMENSIONS ON THESE DRAWINGS SHALL HAVE PRECEDENCE OVER SCALED DIMENSIONS. CONTRACTORS SHALL VERIFY AND BE RESPONSIBLE FOR ALL DIMENSIONS AND CONDITIONS ON THE JOB AND THE OFFICE MUST BE NOTIFIED OF ANY VARIATIONS FROM THE DIMENSIONS AND CONDITIONS SHOWN IN THESE DRAWINGS. SHOP DETAILS MUST BE SUBMITTED TO THIS OFFICE FOR REVIEW BEFORE PROCEEDING WITH THE FABRICATION.

ARCHITECT
GWA ARCHITECTURE
1000 Corporate Center Drive
Suite 500
Monterey Park, CA 91754
tel: (626) 258-0969
Member of The American Institute of Architects

STAMP
PROFESSIONAL ENGINEER
30200
RICHARD A. KILMUP
REGISTERED IN THE STATE OF ARIZONA
EXPIRES 12-31-23

PROJECT NAME/ADDRESS:
SCOTTSDALE, AZ
8980 N. 90TH STREET
SUITE 124
SCOTTSDALE, AZ 85256

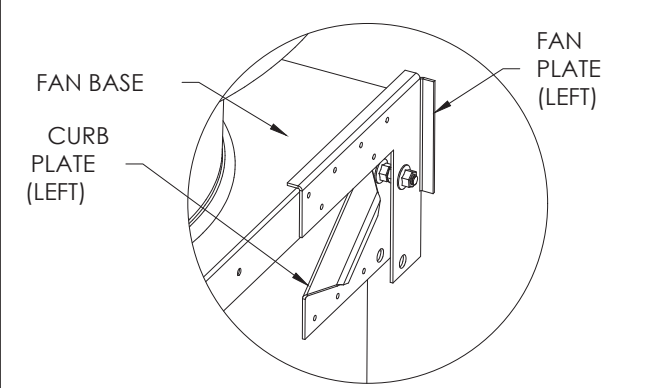
REVISION / ISSUE DATE	
NO.	DESCRIPTION
1	230203 CITY SUB

JOB NUMBER
ARCH PROJECT #: 22-105

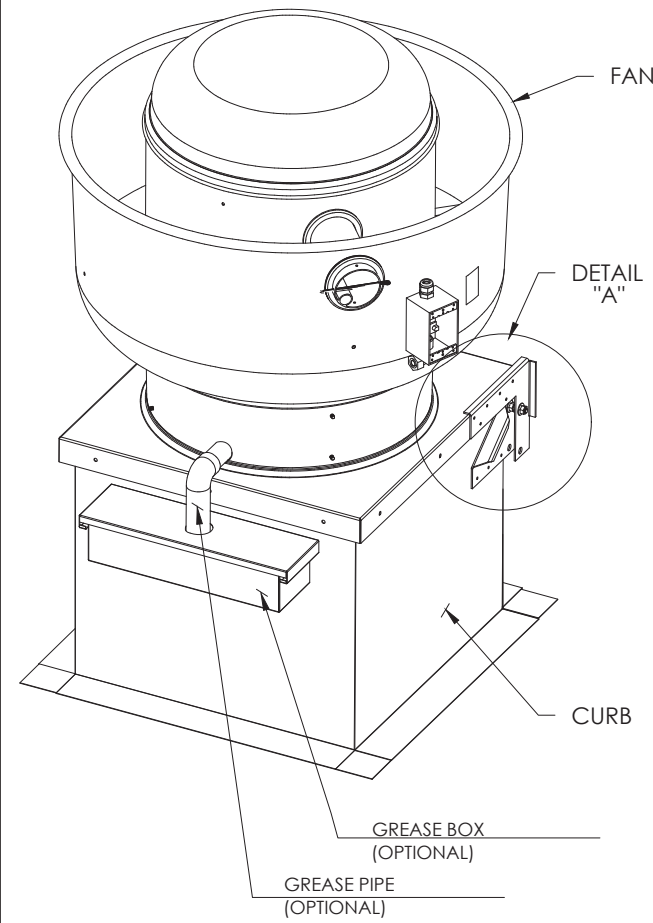
DRAWN BY: kcurtis
CHECKED BY: JP

SHEET CONTENT
HOOD DETAIL PLAN

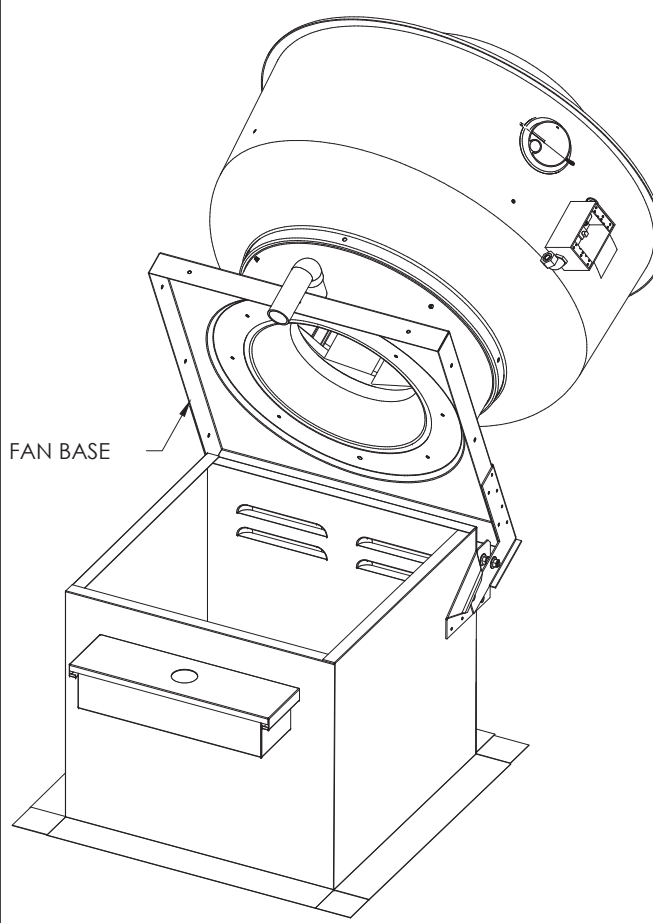
SHEET NO.
M200



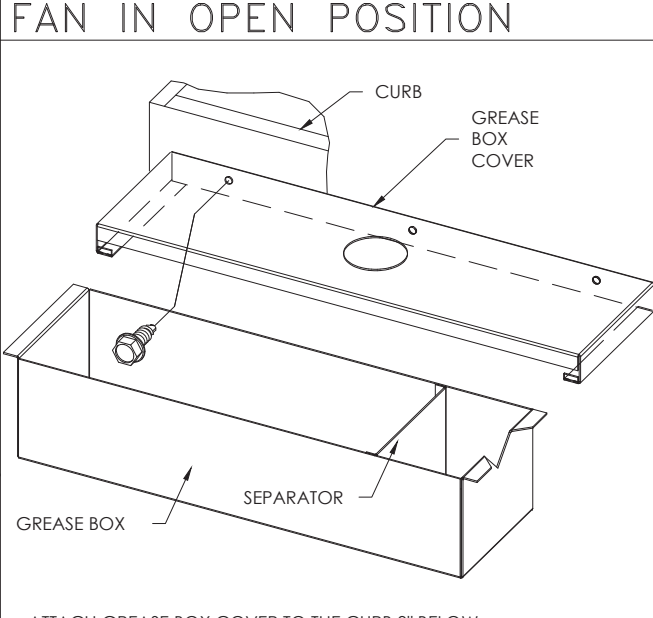
HINGE KIT DETAIL



FAN IN CLOSED POSITION



FAN IN OPEN POSITION



GREASE BOX INSTALLATION

EXHAUST FAN INFORMATION -- JOB#5766080

FAN UNIT NO	TAG	QTY	FAN UNIT MODEL #	MANUFACTURER	CFM	ESP	RPM	MOTOR ENCL	HP	BHP	PHASE	VOLT	FLA	DISCHARGE VELOCITY	WEIGHT (LBS)	SONES
1	KEF-1	1	DU180HFA	CAPTIVEAIRE	2640	1.500	1268	ODP, PREMIUM	3.000	1.3700	3	208	9.5	610 FPM	189	18
2	KEF-2	1	DU33HFA	CAPTIVEAIRE	500	0.750	1385	TEAO-ECM	0.333	0.1580	1	115	4.3	248 FPM	64	13.3

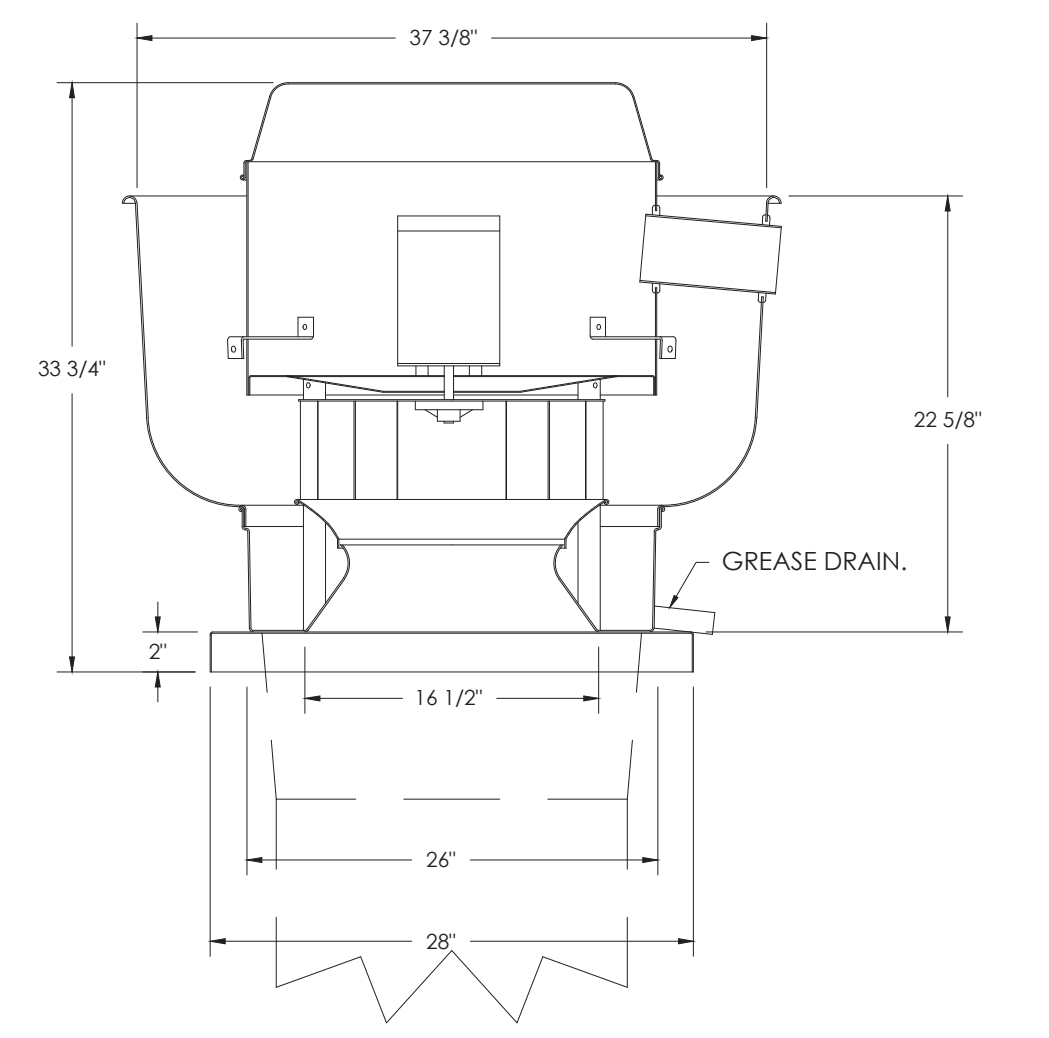
FAN OPTIONS

FAN UNIT NO	TAG	QTY	DESCRIPTION
1	KEF-1	1	GREASE BOX
		1	FAN BASE CERAMIC SEAL - INSTALLED AT PLANT - FOR GREASE DUCTS
2	KEF-2	1	2 YEAR PARTS WARRANTY
		1	ECM WIRING PACKAGE - MANUAL OR 0-10VDC REFERENCE SPEED CONTROL - RTC - (TELCO MOTOR), CCW ROTATION
3	DOAS-1	1	SCR-11 BIRD SCREEN
		1	2 YEAR PARTS WARRANTY
		1	INLET PRESSURE GAUGE, 0-35"
		1	MANIFOLD PRESSURE GAUGE, 0 TO 10" WC, 1 FURNACE
		1	RTU TOTAL CFM MONITORING
		1	SHIP LOOSE GAS STRAINER 3/4"
		1	SINGLE POINT ELECTRICAL CONNECTION FOR RTU, 750VA TRANSFORMER USED, IF A NON-DCV PREWIRED CONTROLS THIS UNIT, THE #28, #47, #A4, OR #2' PREWIRED OPTION MUST BE SELECTED, DOES NOT PROVIDE SUPPLY STARTER IN PREWIRE
		1	CASLINK BUILDING MONITORING SYSTEM - INTERNET OR CELLULAR CONNECTION REQUIRED
		1	RTU2 DOWN DISCHARGE
		1	2" MERV 13 FILTERS FOR RTU3 (QTY. 4)
		1	2" MERV 8 FILTERS FOR RTU3 (QTY. 4)
		1	OVERHEAT STAT
		1	RTU FIXED 100% OA INTAKE CONTROL
		1	RTU2 NO RETURN - 100% OA
		1	REMOTE TEMPERATURE AND HUMIDITY SPACE SENSOR
4	DOAS-2	1	OCCUPIED SCHEDULING
		1	RTU2 CURB DUCT HANGER
		1	COMMERCIAL SMOKE DETECTOR/ALARM INTERLOCK - ALARM SUPPLIED BY OTHERS
		1	CLOGGED FILTER SWITCH - NOTIFICATION ON HMI
		1	HIGH AMBIENT - 15 TON MODULATING COOLING OPTION, 208/230V, R410A REFRIGERANT, VARIABLE SPEED COMPRESSOR, ECM CONDENSING FANS, USED FOR SUMMER CONDITIONS ABOVE 110F DEGREES
		1	15 TON MODULATING REHEAT OPTION - SPACE DEWPOINT CONTROL
		1	UNIT MOUNTED VFD CONFIGURED FOR DCV
		1	5 YEAR ENTIRE UNIT PARTS WARRANTY, 10 YEAR ENTIRE UNIT PARTS WARRANTY WITH REMOTE MONITORING AND CAPTIVEAIRE SERVICE CONTRACT, 25 YEAR STAINLESS STEEL FURNACE PARTS WARRANTY (SEE ADDITIONAL DETAILS)
		1	INLET PRESSURE GAUGE, 0-35"
		1	MANIFOLD PRESSURE GAUGE, 0 TO 10" WC, 1 FURNACE
		1	RTU TOTAL CFM MONITORING
		1	SHIP LOOSE GAS STRAINER 3/4"
		1	SINGLE POINT ELECTRICAL CONNECTION FOR RTU, 750VA TRANSFORMER USED, IF A NON-DCV PREWIRED CONTROLS THIS UNIT, THE #28, #47, #A4, OR #2' PREWIRED OPTION MUST BE SELECTED, DOES NOT PROVIDE SUPPLY STARTER IN PREWIRE
		1	CASLINK BUILDING MONITORING SYSTEM - INTERNET OR CELLULAR CONNECTION REQUIRED
		1	RTU2 DOWN DISCHARGE
1	2" MERV 13 FILTERS FOR RTU2 (QTY. 4)		
1	2" MERV 8 FILTERS FOR RTU2 (QTY. 4)		
1	OVERHEAT STAT		
1	VFD FACTORY MOUNTED AND WIRED IN RTU COMMERCIAL CONTROL VESTIBULE		
1	REMOTE TEMPERATURE AND HUMIDITY SPACE SENSOR		
1	FREESTAT		
1	OCCUPIED SCHEDULING		
1	RTU2 CURB DUCT HANGER		
1	COMMERCIAL SMOKE DETECTOR/ALARM INTERLOCK - ALARM SUPPLIED BY OTHERS		
1	CLOGGED FILTER SWITCH - NOTIFICATION ON HMI		
1	RTU INTAKE/RETURN DAMPER - OA PERCENTAGE CONTROL		
1	RTU2 DOWN RETURN		
1	HIGH AMBIENT - 10 TON MODULATING COOLING OPTION, 208/230V, R410A REFRIGERANT, VARIABLE SPEED COMPRESSOR, ECM CONDENSING FANS, USED FOR SUMMER CONDITIONS ABOVE 110F DEGREES		
1	10 TON MODULATING REHEAT OPTION - SPACE DEWPOINT CONTROL		
1	VAV PACKAGE W/ MANUAL/DDC CONTROL (571 VFD INCLUDED)		
1	5 YEAR ENTIRE UNIT PARTS WARRANTY, 10 YEAR ENTIRE UNIT PARTS WARRANTY WITH REMOTE MONITORING AND CAPTIVEAIRE SERVICE CONTRACT, 25 YEAR STAINLESS STEEL FURNACE PARTS WARRANTY (SEE ADDITIONAL DETAILS)		

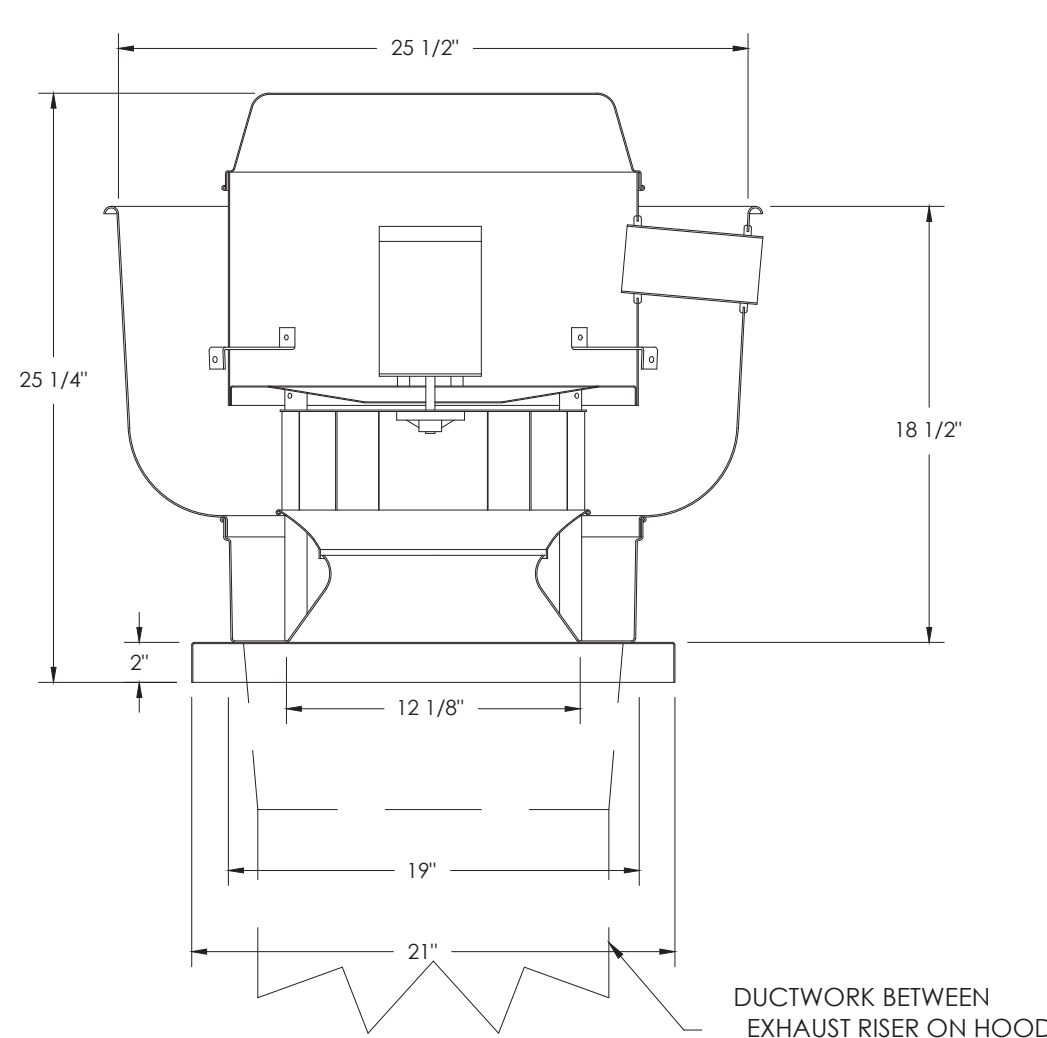
CURB ASSEMBLIES

NO	ON FAN	TAG	WEIGHT	ITEM	SIZE
1	# 1	KEF-1	41 LBS	CURB	26.500"W X 26.500"L X 20.000"H ALONG LENGTH, RIGHT VENTED HINGED.
2	# 2	KEF-2	31 LBS	CURB	19.500"W X 19.500"L X 20.000"H ALONG LENGTH, RIGHT HINGED.
3	# 3	DOAS-1	130 LBS	CURB	59.500"W X 91.000"L X 20.000"H ALONG WIDTH, RIGHT INSULATED.
4	# 4	DOAS-2	111 LBS	CURB	49.500"W X 75.000"L X 20.000"H ALONG WIDTH, RIGHT INSULATED.

FAN #1 DU180HFA - EXHAUST FAN (KEF-1)



FAN #2 DU33HFA - EXHAUST FAN (KEF-2)



FEATURES:

- DIRECT DRIVE CONSTRUCTION (NO BELTS/PULLEYS).
- ROOF MOUNTED FANS.
- RESTAURANT MODEL.
- UL705 AND UL762 AND UL6-5645
- VARIABLE SPEED CONTROL.
- INTERNAL WIRING.
- THERMAL OVERLOAD PROTECTION (SINGLE PHASE).
- HIGH HEAT OPERATION 300°F (149°C).
- GREASE CLASSIFICATION TESTING.
- NEMA 3R SAFETY DISCONNECT SWITCH.

NORMAL TEMPERATURE TEST
EXHAUST FAN MUST OPERATE CONTINUOUSLY WHILE EXHAUSTING AIR AT 300°F (149°C) UNTIL ALL FAN PARTS HAVE REACHED THERMAL EQUILIBRIUM, AND WITHOUT ANY DETERIORATING EFFECTS TO THE FAN WHICH WOULD CAUSE UNSAFE OPERATION.

ABNORMAL FLARE-UP TEST
EXHAUST FAN MUST OPERATE CONTINUOUSLY WHILE EXHAUSTING BURNING GREASE VAPORS AT 600°F (316°C) FOR A PERIOD OF 15 MINUTES WITHOUT THE FAN BECOMING DAMAGED TO ANY EXTENT THAT COULD CAUSE AN UNSAFE CONDITION.

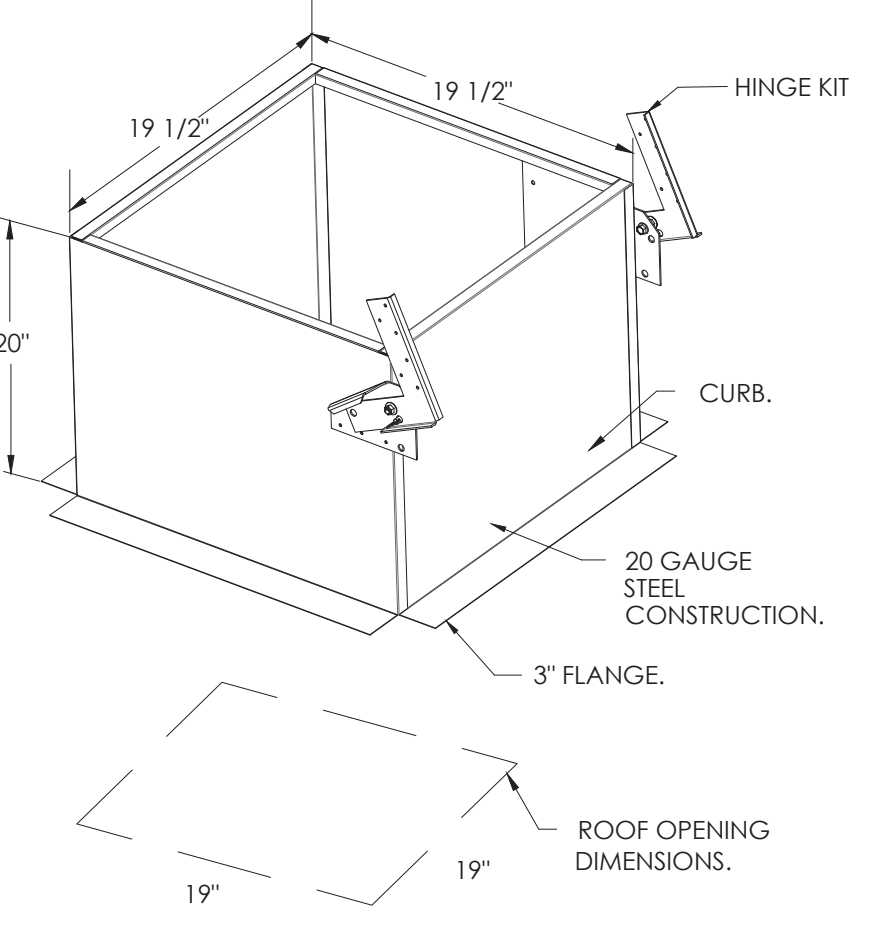
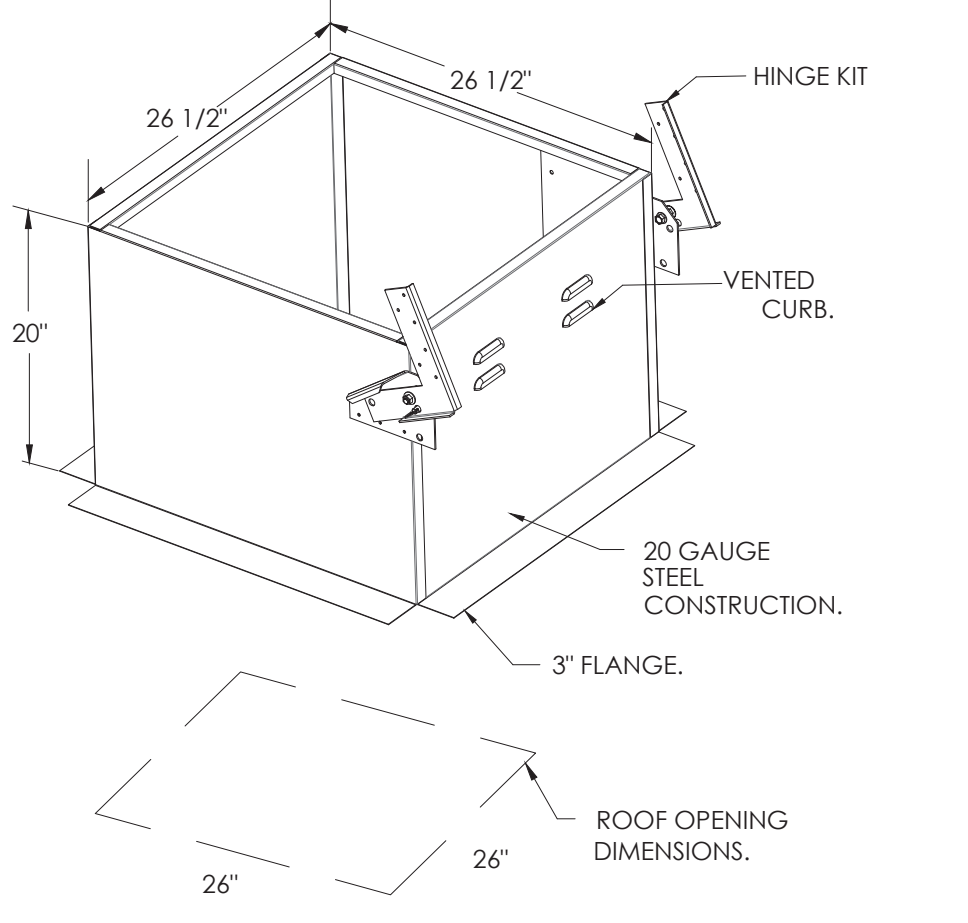
- OPTIONS**
- GREASE BOX.
 - FAN BASE CERAMIC SEAL - INSTALLED AT PLANT - FOR GREASE DUCTS.
 - 2 YEAR PARTS WARRANTY.

FEATURES:

- DIRECT DRIVE CONSTRUCTION (NO BELTS/PULLEYS).
- ROOF MOUNTED FANS.
- RESTAURANT MODEL.
- UL705
- VARIABLE SPEED CONTROL.
- INTERNAL WIRING.
- THERMAL OVERLOAD PROTECTION (SINGLE PHASE).
- HIGH HEAT OPERATION 300°F (149°C).
- NEMA 3R SAFETY DISCONNECT SWITCH.

NORMAL TEMPERATURE TEST
EXHAUST FAN MUST OPERATE CONTINUOUSLY WHILE EXHAUSTING AIR AT 300°F (149°C) UNTIL ALL FAN PARTS HAVE REACHED THERMAL EQUILIBRIUM, AND WITHOUT ANY DETERIORATING EFFECTS TO THE FAN WHICH WOULD CAUSE UNSAFE OPERATION.

- OPTIONS**
- ECM WIRING PACKAGE - MANUAL OR 0-10VDC REFERENCE SPEED CONTROL - RTC, (TELCO MOTOR), CCW ROTATION.
 - SCR-11 BIRD SCREEN.
 - 2 YEAR PARTS WARRANTY.



REVISIONS

NO.	DATE	DESCRIPTION
1	230203	CITY SUB

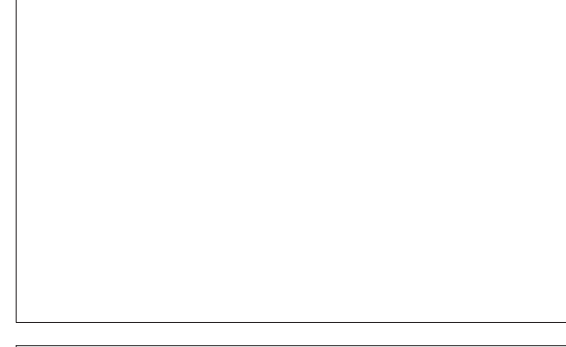
CAPTIVEAIRE
www.captiveaire.com
Oregon Office
2702 NE 114th Ave., Suite 2, Vancouver, WA 98684 PHONE: (360) 825-5418 FAX: (360) 825-5418 EMAIL: reg@captivair.com

LITTLE FIG - SCOTTSDALE, AZ
8980 North 90th Street, # 124
Scottsdale, AZ, 85258

DATE: 1/9/2023
DWG.#: 5766080
DRAWN BY: kcurtis
SCALE: 3/4" = 1'-0"
MASTER DRAWING

SHEET NO. 3

CITY APPROVAL

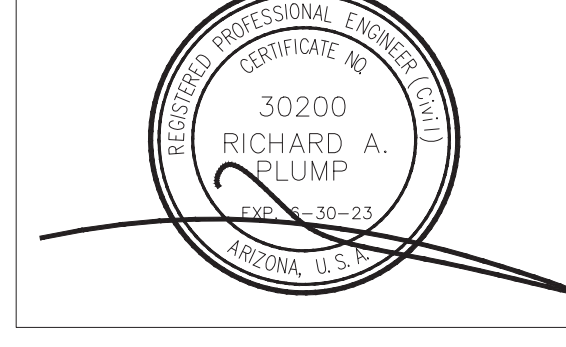


THESE DRAWINGS AND SPECIFICATIONS AND IDEAS, DESIGNS AND ARRANGEMENTS REPRESENTED THEREBY ARE AND SHALL REMAIN THE PROPERTY OF GWA ARCHITECTURE, INC. AND NO PART THEREOF SHALL BE COPIED, DISCLOSED TO OTHERS OR USED IN CONNECTION WITH ANY WORK OR PROJECT OTHER THAN THE SPECIFIC PROJECT FOR WHICH THEY HAVE BEEN PREPARED AND DEVELOPED WITHOUT THE WRITTEN CONSENT OF GWA ARCHITECTURE, INC. VISUAL CONTACT WITH THESE DRAWINGS AND SPECIFICATIONS SHALL CONSTITUTE CONCLUSIVE EVIDENCE OF THESE RESTRICTIONS. WRITTEN DIMENSIONS ON THESE DRAWINGS SHALL HAVE PRECEDENCE OVER SCALED DIMENSIONS. CONTRACTORS SHALL VERIFY AND BE RESPONSIBLE FOR ALL DIMENSIONS AND CONDITIONS ON THE JOB, AND THE OFFICE MUST BE NOTIFIED OF ANY VARIATIONS FROM THE DIMENSIONS AND CONDITIONS SHOWN IN THESE DRAWINGS. SHOP SETS MUST BE SUBMITTED TO THIS OFFICE FOR REVIEW BEFORE PROCEEDING WITH THE FABRICATION.

ARCHITECT

GWA ARCHITECTURE
1000 Corporate Center Drive
Suite 500
Menlo Park, CA 94704
Tel: (650) 255-0565
Member of The American Institute of Architects

STAMP



PROJECT NAME/ADDRESS:

SCOTTSDALE, AZ
8980 N. 90TH STREET
SUITE 124
SCOTTSDALE, AZ 85256

REVISION / ISSUE DATE

NO.	DATE	DESCRIPTION
1	230203	CITY SUB

JOB NUMBER

ARCH PROJECT #: 22-105

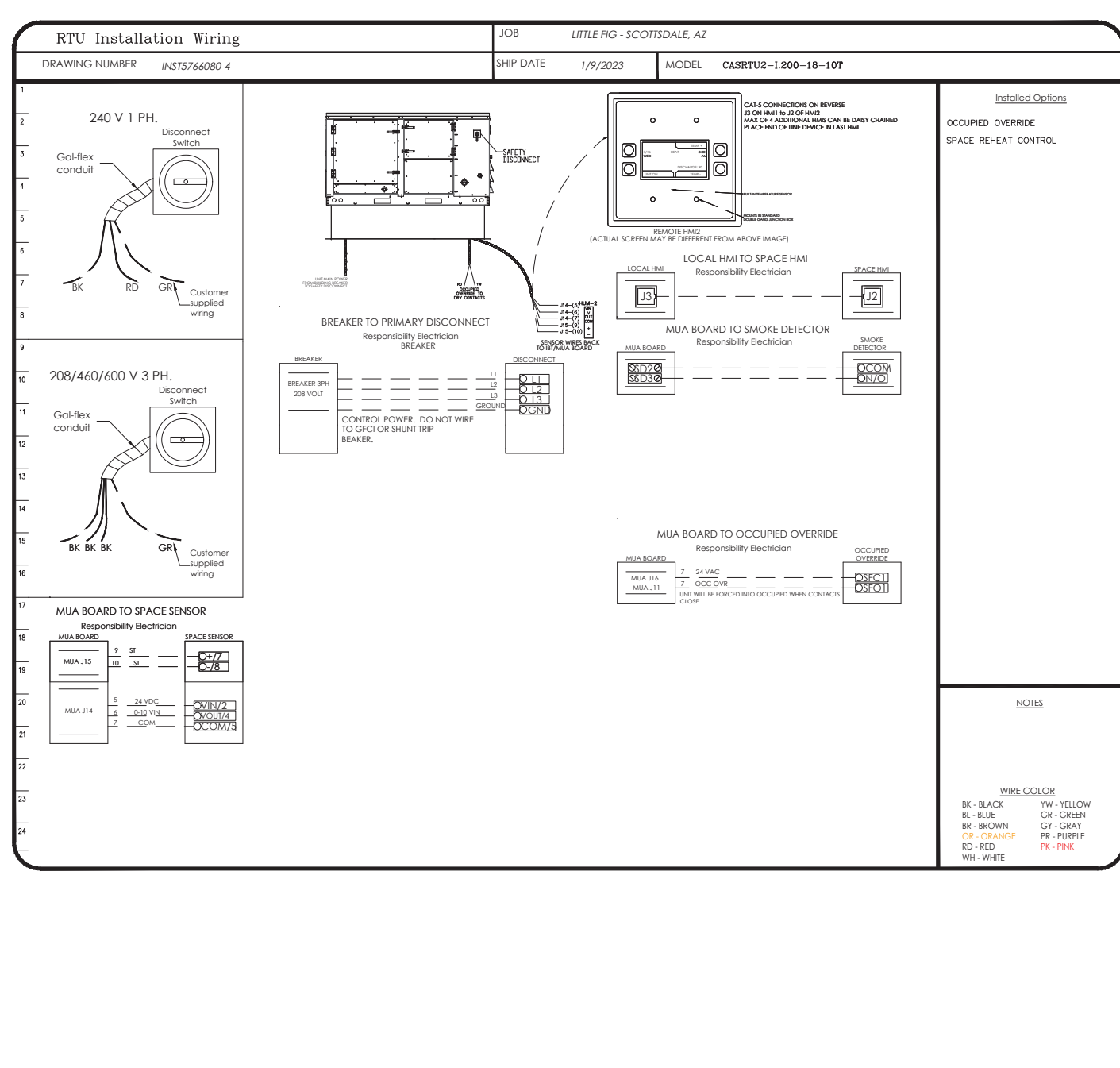
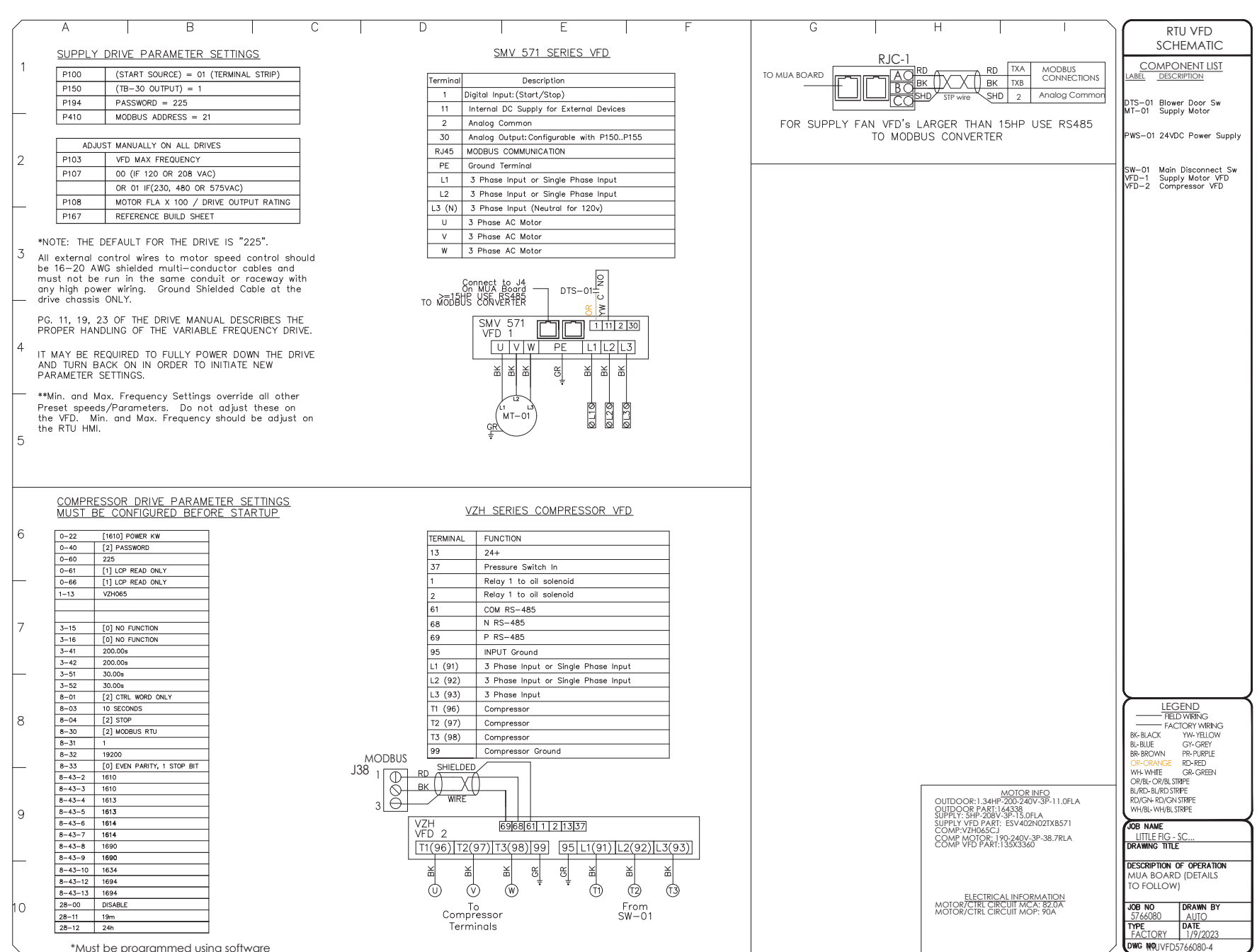
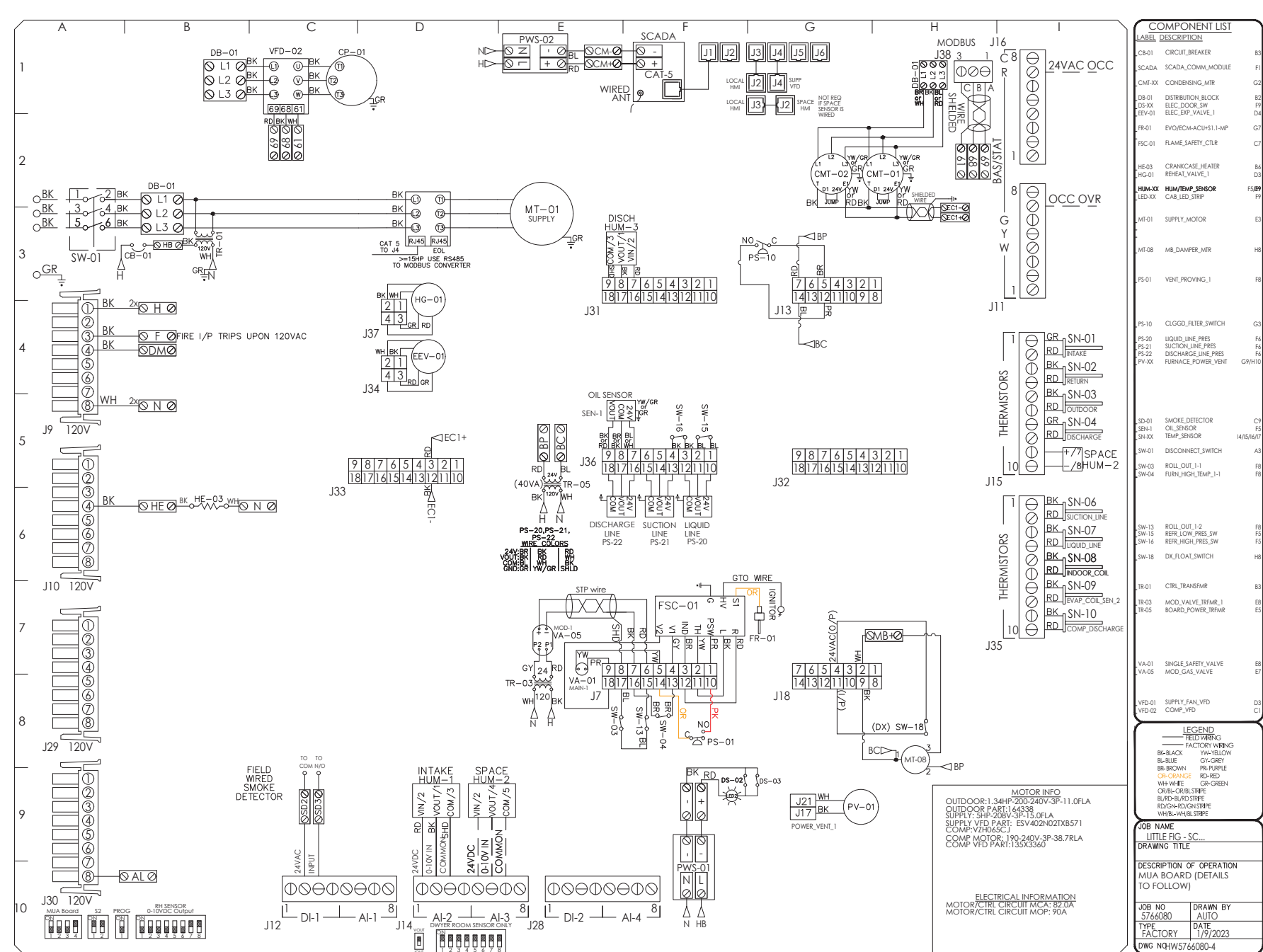
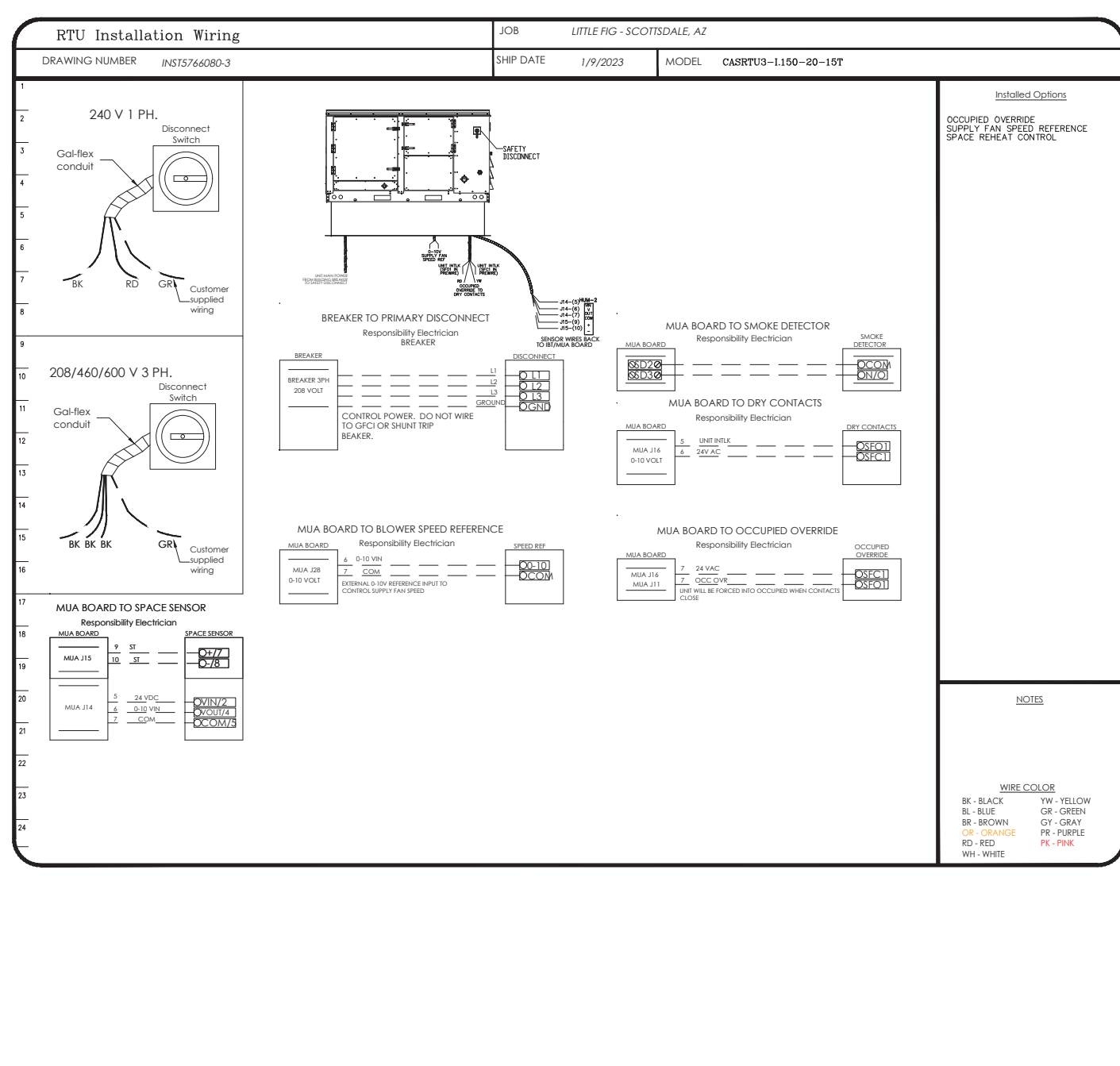
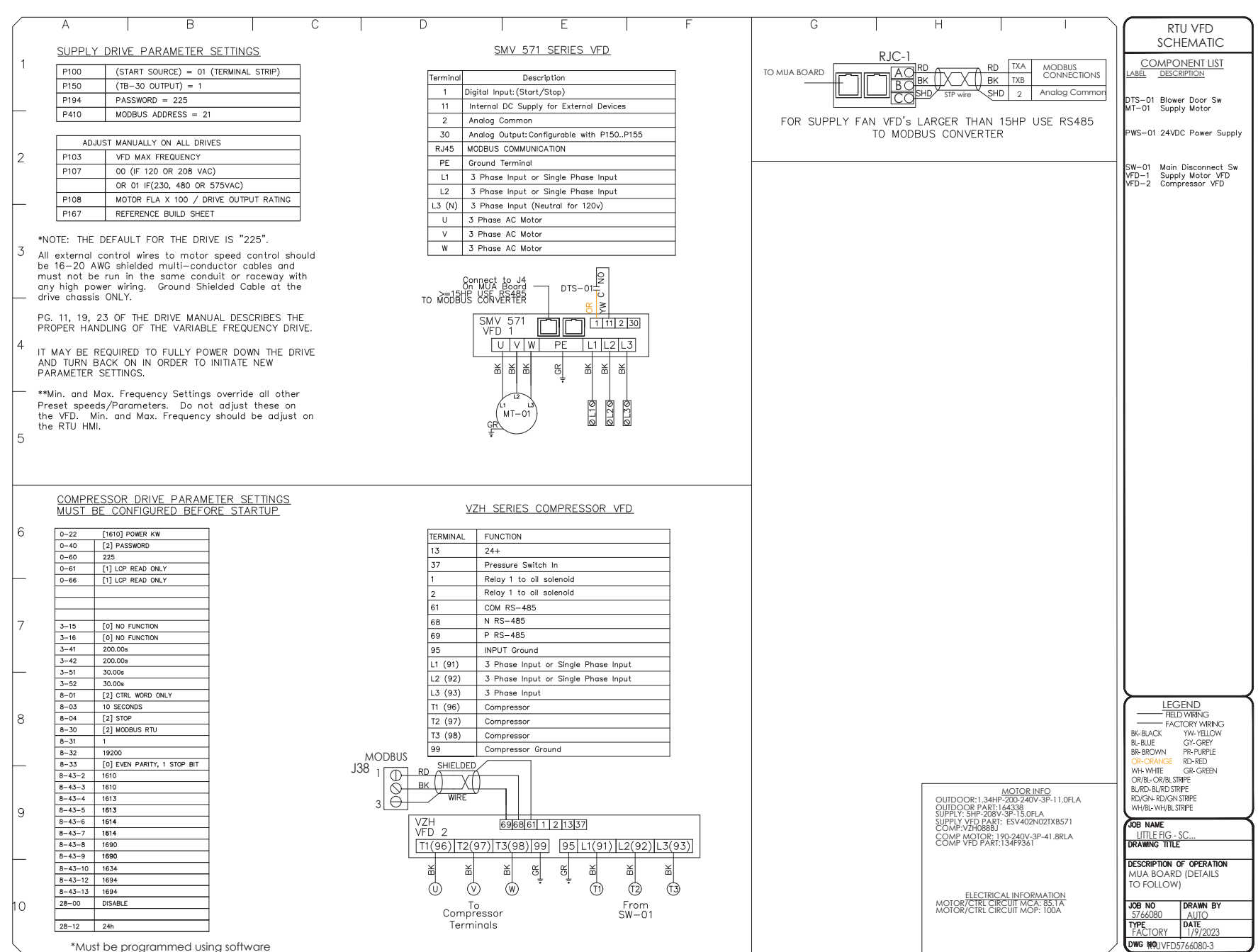
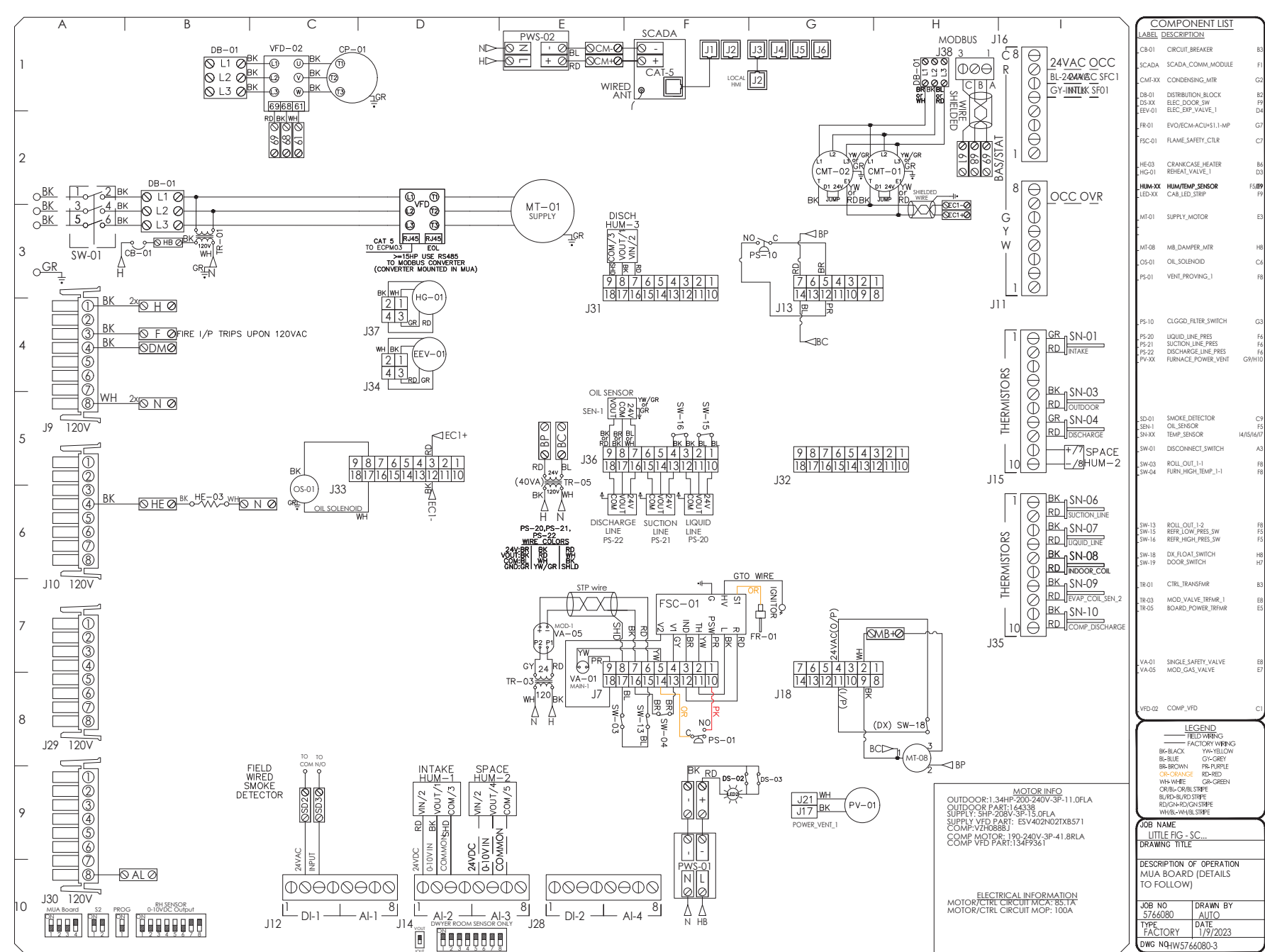
DRAWN BY: STAFF CHECKED BY: JP

SHEET CONTENT

HOOD DETAIL PLAN

SHEET NO.

M202



REVISIONS	
NO.	DESCRIPTION



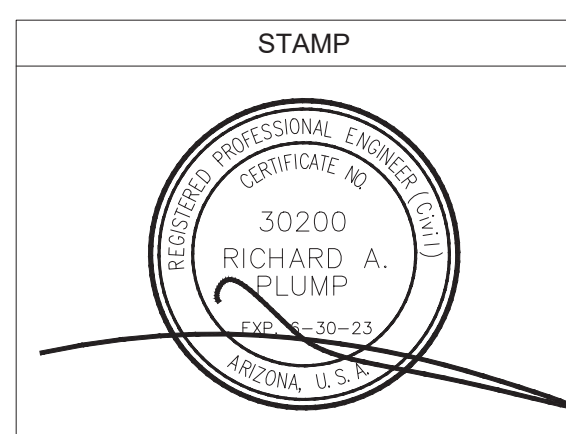
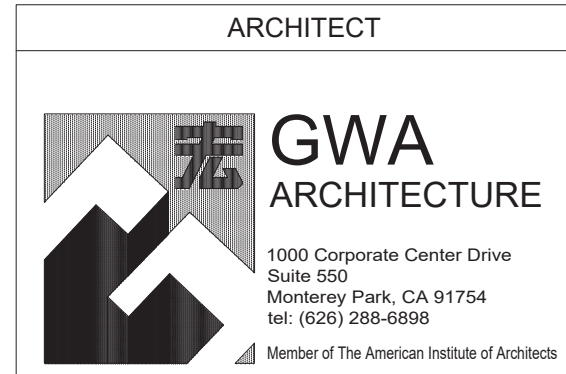
LITTLE FIG - SCOTTSDALE, AZ
 8980 North 90th Street, # 124
 Scottsdale, AZ, 85258

DATE: 1/9/2023
 DWG.#: 5766080
 DRAWN BY: kcurtis
 SCALE: 1/2" = 1'-0"
 MASTER DRAWING

SHEET NO. 7

CITY APPROVAL

THESE DRAWINGS AND SPECIFICATIONS AND IDEAS, DESIGNS AND INVENTIONS REPRESENTED THEREBY ARE AND SHALL REMAIN THE PROPERTY OF GWA ARCHITECTURE, INC. AND NO PART THEREOF SHALL BE COPIED, DISCLOSED TO OTHERS OR USED IN CONNECTION WITH ANY WORK OR PROJECT OTHER THAN THE SPECIFIC PROJECT FOR WHICH THEY HAVE BEEN PREPARED AND DEVELOPED WITHOUT THE WRITTEN CONSENT OF GWA ARCHITECTURE, INC. VISUAL CONTACT WITH THESE DRAWINGS AND SPECIFICATIONS SHALL CONSTITUTE CONCLUSIVE EVIDENCE OF THESE RESTRICTIONS. WRITTEN DIMENSIONS ON THESE DRAWINGS SHALL HAVE PRECEDENCE OVER SCALED DIMENSIONS. CONTRACTORS SHALL VERIFY AND BE RESPONSIBLE FOR ALL DIMENSIONS AND CONDITIONS ON THE JOB, AND THE OFFICE MUST BE NOTIFIED OF ANY VARIATIONS FROM THE DIMENSIONS AND CONDITIONS SHOWN IN THESE DRAWINGS. SHOP DETAILS MUST BE SUBMITTED TO THIS OFFICE FOR REVIEW BEFORE PROCEEDING WITH THE FABRICATION.



PROJECT NAME/ADDRESS:
 SCOTTSDALE, AZ
 8980 N. 90TH STREET
 SUITE 124
 SCOTTSDALE, AZ 85256

REVISION / ISSUE DATE	
NO.	DESCRIPTION
1	230203 CITY SUB

JOB NUMBER
 ARCH PROJECT #: 22-105

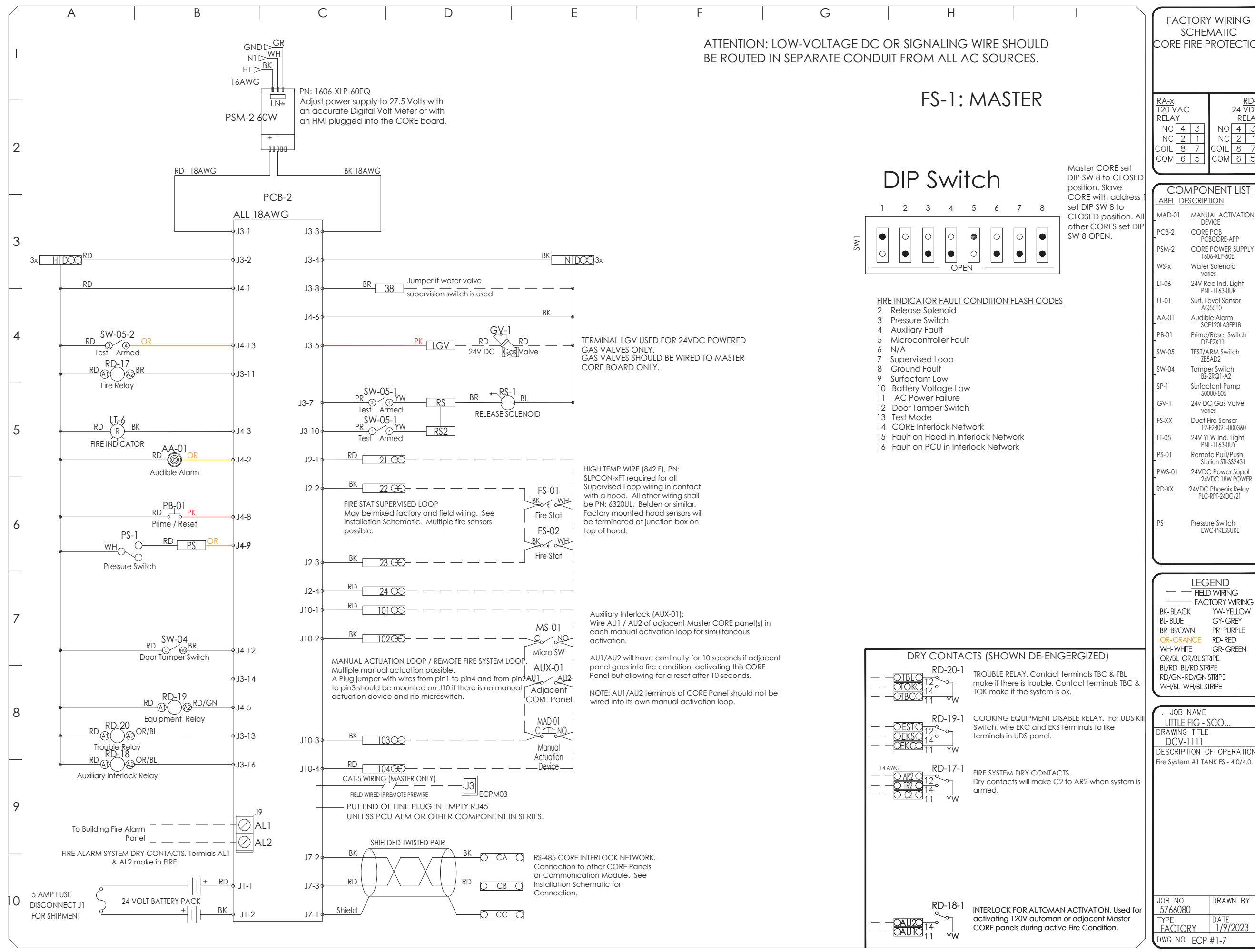
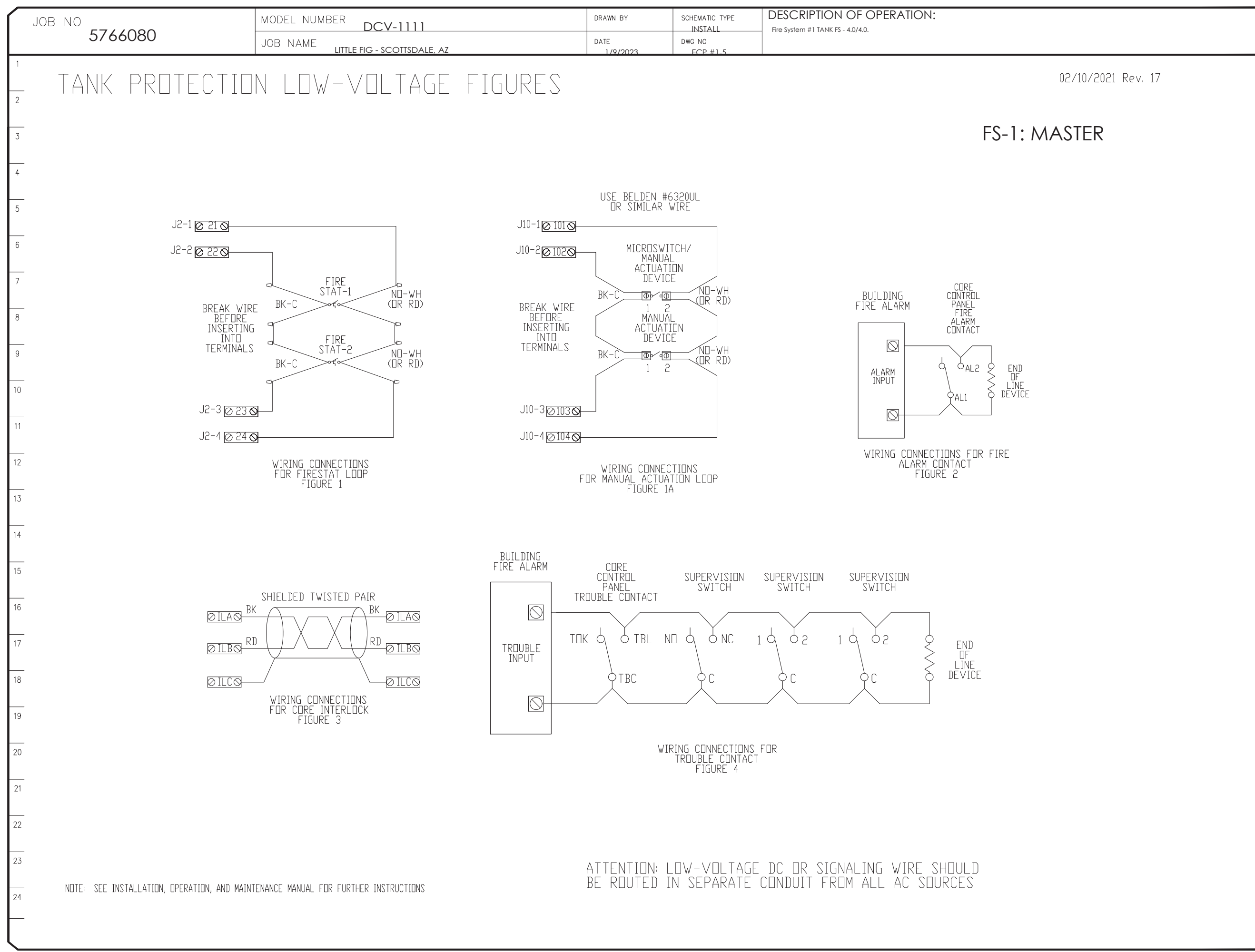
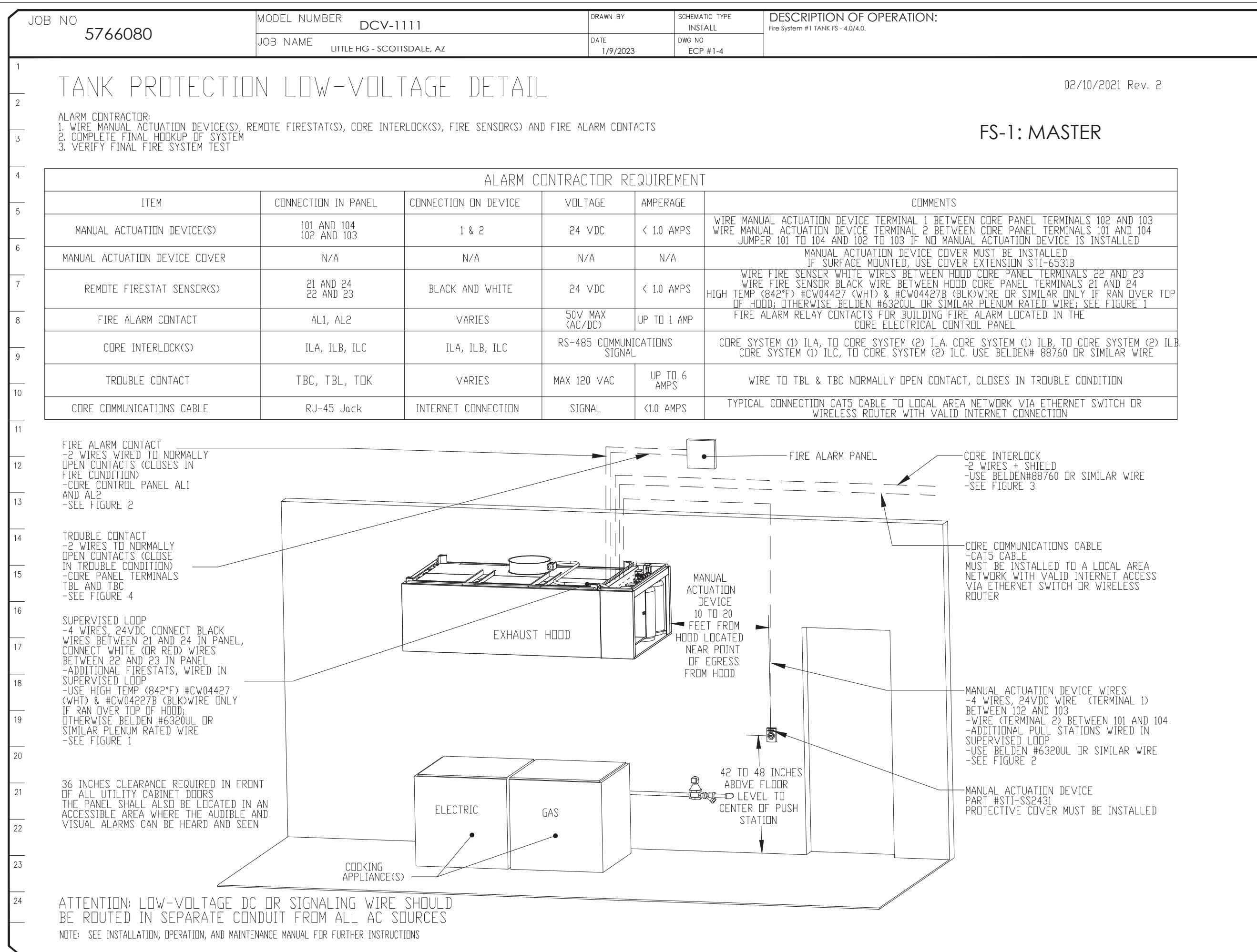
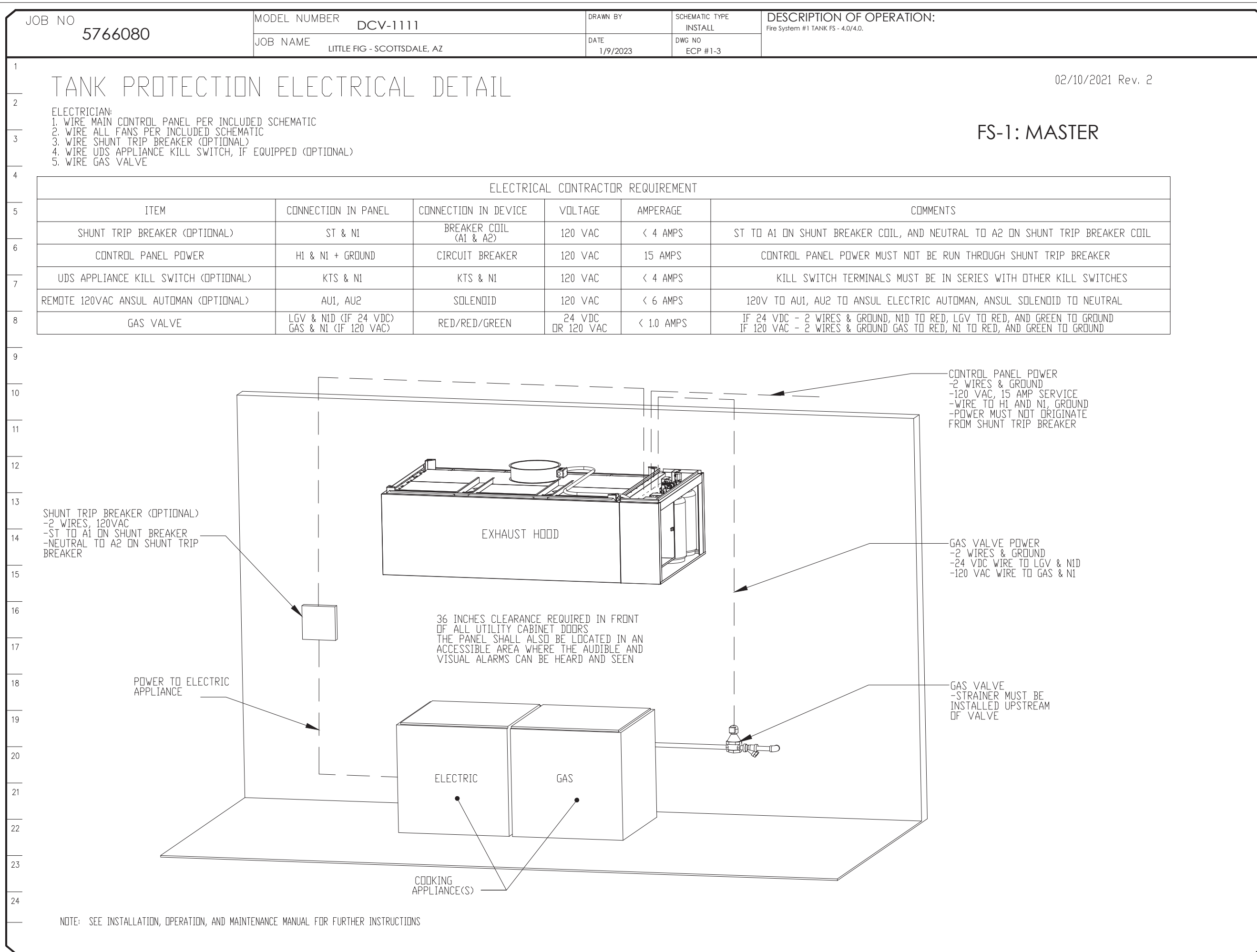
DRAWN BY: STAFF CHECKED BY: JP

SHEET CONTENT

HOOD DETAIL PLAN

SHEET NO.

M206



REVISIONS

NO.	DATE	DESCRIPTION
1	2/10/2021	ISSUE FOR PERMIT

CITY APPROVAL

ARCHITECT

GWA ARCHITECTURE

1000 Corporate Center Drive
 Suite 500
 Montgomery Park, CA 91754
 Tel: (626) 258-0568
 Member of The American Institute of Architects

STAMP

PROFESSIONAL ENGINEER
 30200
 RICHARD A. RILUMP
 1/10/2021

PROJECT NAME/ADDRESS:

SCOTTSDALE, AZ

8980 N. 90TH STREET
 SUITE 124
 SCOTTSDALE, AZ 85256

REVISION / ISSUE DATE

NO.	DATE	DESCRIPTION
1	2/10/2021	CITY SUB

DATE: 1/9/2023

DWG.#: 5766080

DRAWN BY: kcurtis

SCALE: 3/4" = 1'-0"

MASTER DRAWING

JOB NUMBER

ARCH PROJECT #: 22-105

DRAWN BY: STAFF

CHECKED BY: JP

SHEET CONTENT

HOOD DETAIL PLAN

SHEET NO.

8

CAPTIVE

Oregon Office
 2702 NE 14th Ave., Suite 2, Vancouver, WA, 98684. PHONE: (828) 548-5418 FAX: (919) 227-5883 EMAIL: reg@captivate.com www.captivate.com

THESE DRAWINGS AND SPECIFICATIONS AND IDEAS, DESIGNS AND INNOVATIONS REPRESENTED THEREBY ARE AND SHALL REMAIN THE PROPERTY OF GWA ARCHITECTURE, INC. AND NO PART THEREOF SHALL BE COPIED, DISCLOSED TO OTHERS OR USED IN CONNECTION WITH ANY WORK OR PROJECT OTHER THAN THE SPECIFIC PROJECT FOR WHICH THEY HAVE BEEN PREPARED AND DEVELOPED WITHOUT THE WRITTEN CONSENT OF GWA ARCHITECTURE, INC. VISUAL CONTACT WITH THESE DRAWINGS AND SPECIFICATIONS SHALL CONSTITUTE CONCLUSIVE EVIDENCE OF THESE RESTRICTIONS. WRITTEN DIMENSIONS ON THESE DRAWINGS SHALL HAVE PRECEDENCE OVER SCALED DIMENSIONS. CONTRACTORS SHALL VERIFY AND BE RESPONSIBLE FOR ALL DIMENSIONS AND CONDITIONS ON THE JOB AND THIS OFFICE MUST BE NOTIFIED OF ANY VARIATIONS FROM THE DIMENSIONS AND CONDITIONS SHOWN BY THESE DRAWINGS. SHOP DETAILS MUST BE SUBMITTED TO THIS OFFICE FOR REVIEW BEFORE PROCEEDING WITH THE FABRICATION.

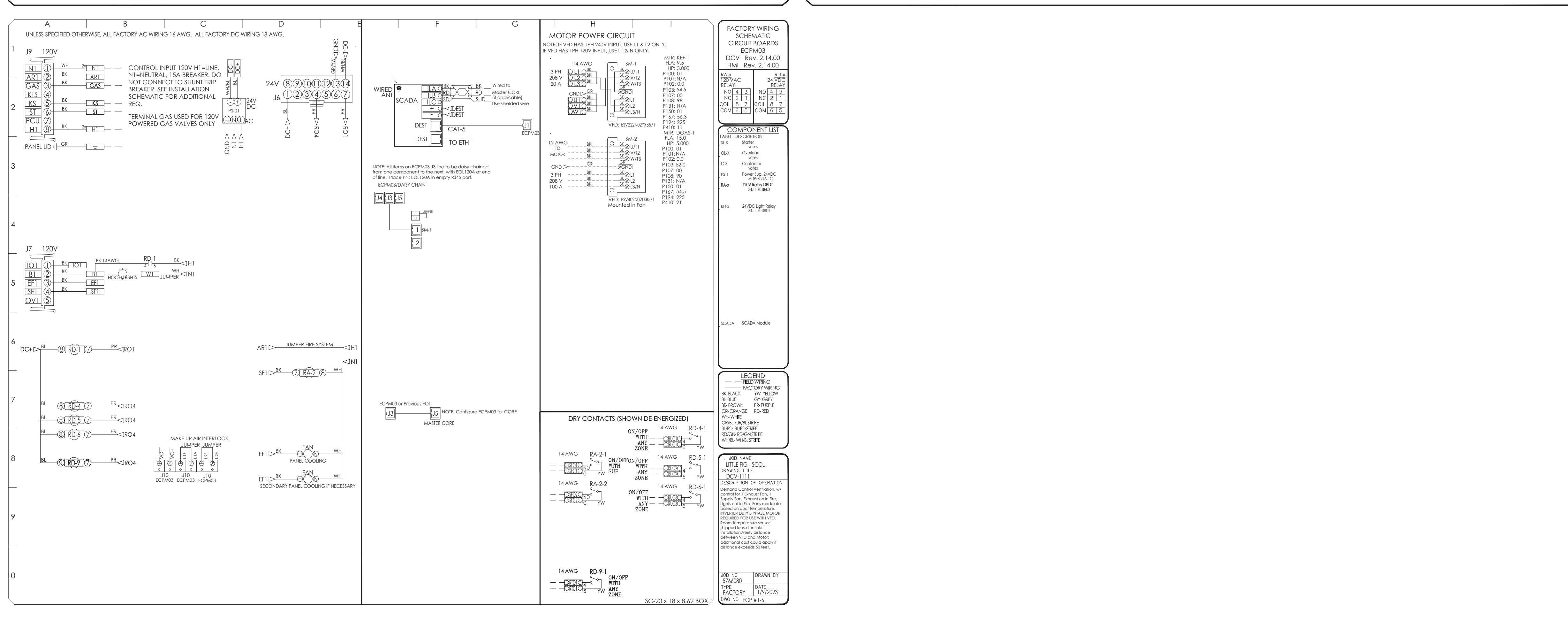
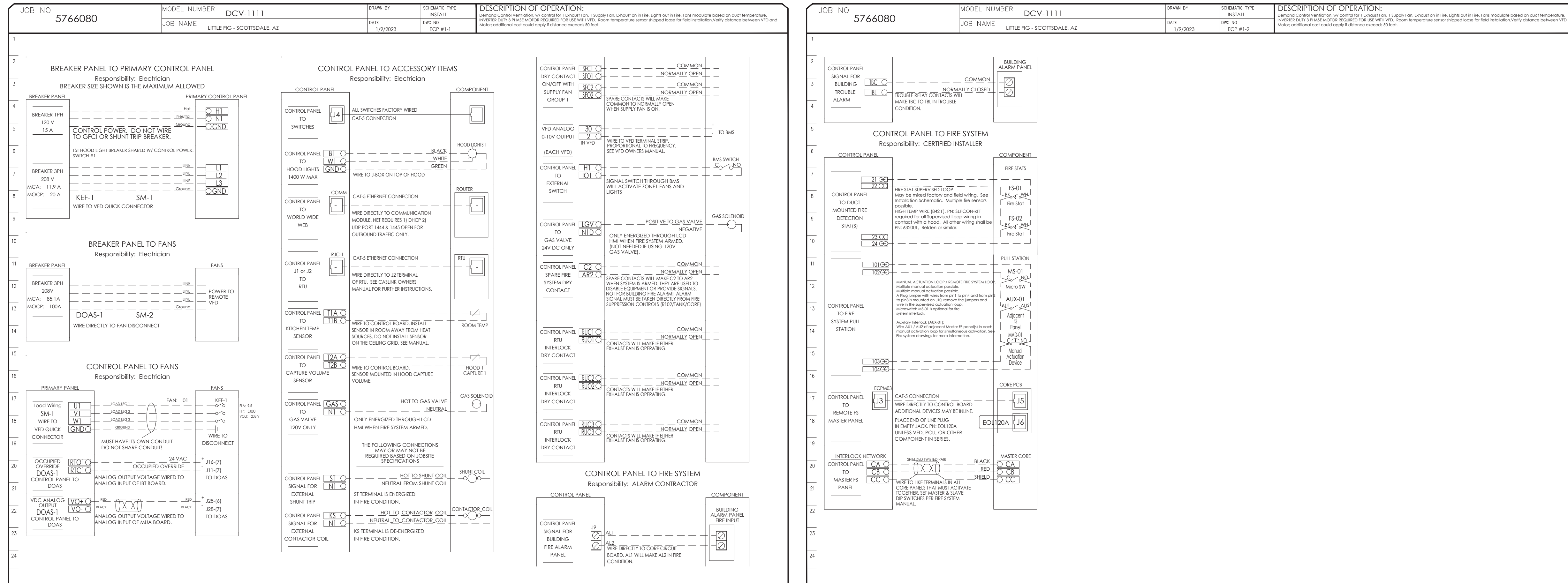
SCOTTSDALE, AZ

8980 N. 90TH STREET
 SUITE 124
 SCOTTSDALE, AZ 85256

M207

ELECTRICAL PACKAGE - JOB#5766080

NO	TAG	PACKAGE #	LOCATION	SWITCHES		OPTION	FANS CONTROLLED					
				LOCATION	QUANTITY		FAN TAG	TYPE	Φ	HP	VOLT	FLA
1		DCV-1111	WALL MOUNT IN SS BOX	SS WALL MOUNT BOX	1 LIGHT	SMART CONTROLS DCV	KEF-1	EXHAUST	3	3.000	208	9.5
							DOAS-1	SUPPLY	3	5.000	208	15.0



REVISIONS

NO.	DATE	DESCRIPTION
1	2/20/23	CITY SUB

DATE: 1/9/2023

DWG.#: 5766080

DRAWN BY: kcurtis

SCALE: 3/4" = 1'-0"

MASTER DRAWING

SHEET NO. 9

PROJECT NAME/ADDRESS: LITTLE FIG - SCOTTSDALE, AZ
 8980 North 90th Street, # 124
 Scottsdale, AZ, 85258

JOB NUMBER: ARCH PROJECT # 22-105

DRAWN BY: STAFF
CHECKED BY: JP

SHEET CONTENT: HOOD DETAIL PLAN

SHEET NO.: M208

CAPTIVE

Oregon Office
 2702 NE 14th Ave., Suite 2, Vancouver, WA, 98684
 PHONE: (360) 828-5418 FAX: (919) 227-5883
 EMAIL: reg@captiveware.com www.captiveware.com

CITY APPROVAL

THESE DRAWINGS AND IDEAS, DESIGNS AND INVENTIONS REPRESENTED THEREBY ARE AND SHALL REMAIN THE PROPERTY OF GWA ARCHITECTURE, INC. AND NO PART THEREOF SHALL BE COPIED, DISCLOSED TO OTHERS OR USED IN CONNECTION WITH ANY WORK OR PROJECT OTHER THAN THE SPECIFIC PROJECT FOR WHICH THEY HAVE BEEN PREPARED AND DEVELOPED WITHOUT THE WRITTEN CONSENT OF GWA ARCHITECTURE, INC. VISUAL CONTACT WITH THESE DRAWINGS AND SPECIFICATIONS SHALL CONSTITUTE CONCLUSIVE EVIDENCE OF THESE RESTRICTIONS. WRITTEN DIMENSIONS ON THESE DRAWINGS SHALL HAVE PRECEDENCE OVER SCALED DIMENSIONS. CONTRACTORS SHALL VERIFY AND BE RESPONSIBLE FOR ALL DIMENSIONS AND CONDITIONS ON THE JOB AND THE OFFICE MUST BE NOTIFIED OF ANY VARIATIONS FROM THE DIMENSIONS AND CONDITIONS SHOWN IN THESE DRAWINGS. SHOP DETAILS MUST BE SUBMITTED TO THIS OFFICE FOR REVIEW BEFORE PROCEEDING WITH THE FABRICATION.

ARCHITECT

GWA ARCHITECTURE

1000 Corporate Center Drive
 Suite 500
 Montgomery Park, CA 91754
 Tel: (626) 288-0968
 Member of The American Institute of Architects

STAMP

PROFESSIONAL ENGINEER
 30200
 RICHARD A. RULLMANN
 1/20/23
 REGIONAL U.S.A.

PROJECT NAME/ADDRESS: LITTLE FIG - SCOTTSDALE, AZ
 8980 N. 90TH STREET
 SUITE 124
 SCOTTSDALE, AZ 85258

REVISION / ISSUE DATE

NO.	DATE	DESCRIPTION
1	2/20/23	CITY SUB

JOB NUMBER: ARCH PROJECT # 22-105

DRAWN BY: STAFF
CHECKED BY: JP

SHEET CONTENT: HOOD DETAIL PLAN

SHEET NO.: M208

