

RTU-1

**Tag Cover Sheet
Unit Report
Certified Drawing
Performance Report
Unit Feature Sheet**

Unit Report For RTU-1

Project: Pandora - Rookwood Commons
 Prepared By: Jeff Gries

11/15/2022
 04:42PM

Unit Parameters

Unit Model:..... **48FCEA05A3A5-0A0A0**
 Unit Size:..... **05 (4 Tons)**
 Volts-Phase-Hertz:..... **208-3-60**
 Heating Type:..... **Gas**
 Heat Control:..... **Medium Heat**
 Duct Cfg:..... **Vertical Supply / Vertical Return**
 DX Options: **Standard One Stage Cooling Models**

Dimensions (ft. in.) & Weight (lb.) ***

Unit Length:..... **6' 2.375"**
 Unit Width:..... **3' 10.625"**
 Unit Height:..... **2' 9.375"**
Total Operating Weight:..... 731 lb

*** Weights and Dimensions are approximate. Weight does not include unit packaging. Approximate dimensions are provided primarily for shipping purposes. For exact dimensions and weights, refer to appropriate product data catalog.

Lines and Filters

Gas Line Size: **1/2**
 Condensate Drain Line Size: **3/4**
 Return Air Filter Type: **Throwaway**
 Return Air Filter Quantity: **2**
 Return Air Filter Size: **16 x 25 x 2**

Selection includes construction throwaway filter into the base fan curve. This filter is not MERV Rated.

Unit Configuration

Direct Drive - EcoBlue - High Static
 Al/Cu - Al/Cu
 Base Electromechanical Controls
 Standard Packaging

Warranty Information

1-Year parts(std.)
 5-Year compressor parts(std.)
 10-Year heat exchanger - Aluminized(std.)

Ordering Information

Part Number	Description	Qty
48FCEA05A3A5-0A0A0	Rooftop Unit	1
	Base Unit	
	Direct Drive - EcoBlue - High Static	
Field Installed Accessories		
ECD-SRT12CB-D2EH	Vertical EconoMi\$er X with Barometric Relief	1
CRRFCURB001A01	14-inch Tall Roof Curb	1
33CS2PP2S-03	7-Day Programmable Thermostat	1
D4120	Duct Mounted Smoke Detector w/ Sampling Tube & Remote Annunciator	1

Certified Drawing for RTU-1

Project: Pandora - Rookwood Commons
Prepared By: Jeff Gries

11/15/2022
04:42PM

NOTES:

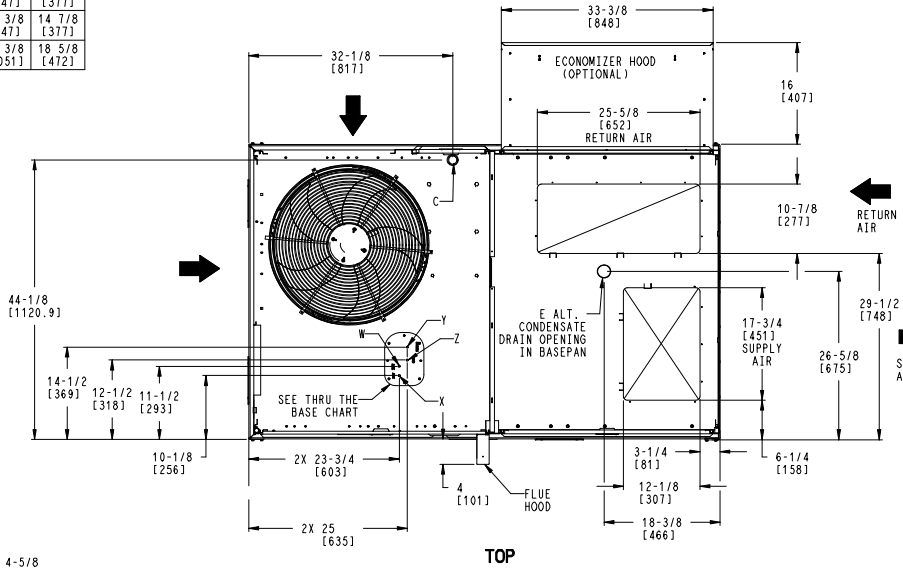
1. DIMENSIONS ARE IN INCHES. DIMENSIONS IN [] ARE IN MILLIMETERS.
2. CENTER OF GRAVITY
3. DIRECTION OF AIR FLOW
4. ALL VIEW DRAWN USING 3RD ANGLE

UNIT	J	K
48FC*04	33 3/8 [847]	18 5/8 [472]
48FC*05	33 3/8 [847]	14 7/8 [377]
48FC*06	33 3/8 [847]	14 7/8 [377]
48FC*07	41 3/8 [1051]	18 5/8 [472]



THIS DOCUMENT IS THE PROPERTY OF UTC CLIMATE, CONTROLS & SECURITY AND IS DELIVERED UPON THE EXPRESS CONDITION THAT THE CONTENTS WILL NOT BE DISCLOSED OR USED WITHOUT WRITTEN CONSENT.

SUBMISSION OF THESE DRAWINGS OR DOCUMENTS DOES NOT CONSTITUTE PART PERFORMANCE OR ACCEPTANCE OF CONTRACT.

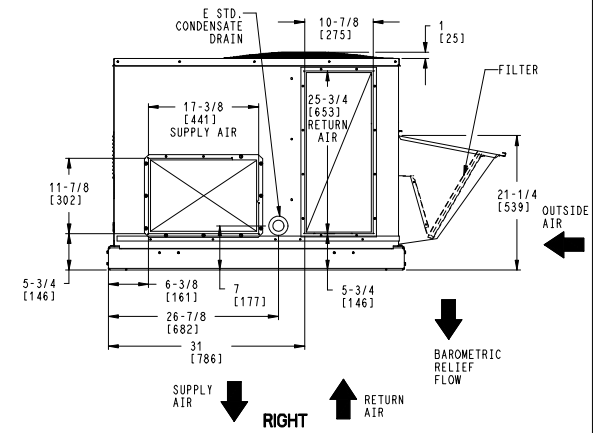
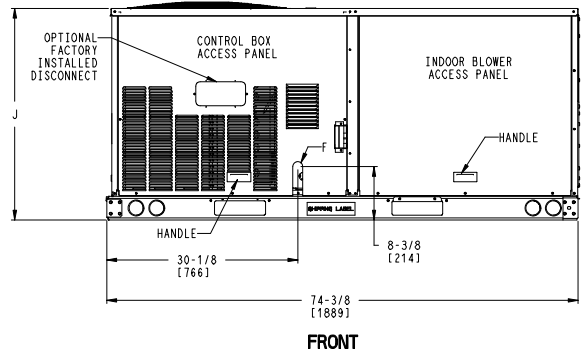
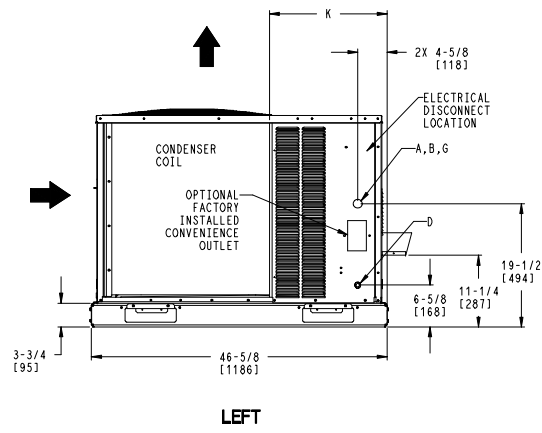


CONNECTION SIZES	
A	1 3/8" [35] DIA. FIELD POWER SUPPLY HOLE
B	2" [50] DIA. POWER SUPPLY KNOCKOUT
C	1 3/4" [51] DIA. GAUGE ACCESS PLUG
D	7/8" [22] DIA. FIELD CONTROL WIRING HOLE
E	3/4"-14 NPT CONDENSATE DRAIN
F	1/2"-14 NPT GAS CONNECTION
G	2 1/2" [64] DIA. POWER SUPPLY KNOCK-OUT

THRU-THE-BASE CHART THESE HOLES REQUIRED FOR USE CRBTW008A00, 009A00			
	THREADED CONDUIT SIZE	WIRE USE	REQ'D HOLE SIZES (MAX.)
W	1/2"	115V	7/8" [22.2]
X	1/2"	24V	7/8" [22.2]
Y	3/4"	POWER	1-1/8" [28.6]
Z*	(009A00) 1/2" FPT	GAS	1-1/8" [28.6]

FOR "THRU-THE-BASEPAN" FACTORY OPTION, FITTINGS FOR ONLY X, Y, & Z ARE PROVIDED

* (008A00) PROVIDES 3/4" FPT THRU CURB FLANGE & FITTING.



ITC CLASSIFICATION	SHEET	DATE	SUPERCEDES	DESCRIPTION	PROJECT	REV
U.S. ECCN: NSR	1 OF 3	09/07/18	06/22/18	48FC 04-07 SINGLE PACKAGE ELECTRICAL COOLING WITH GAS HEAT	48TC003093	REV A

Certified Drawing for RTU-1

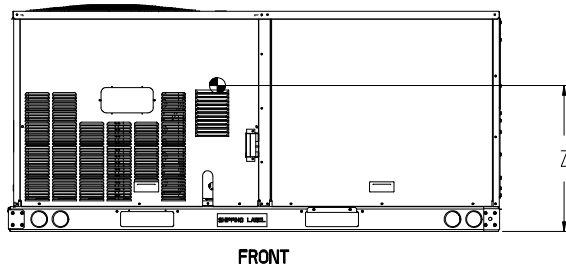
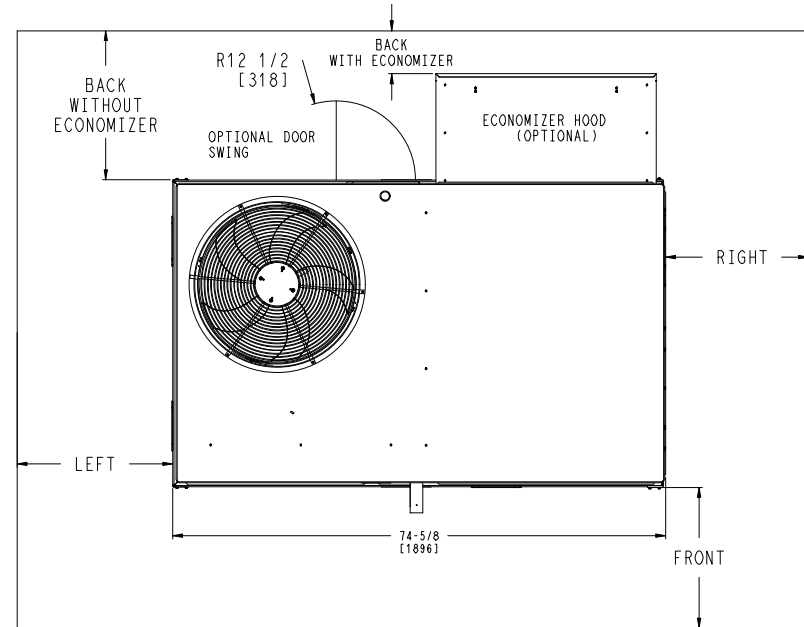
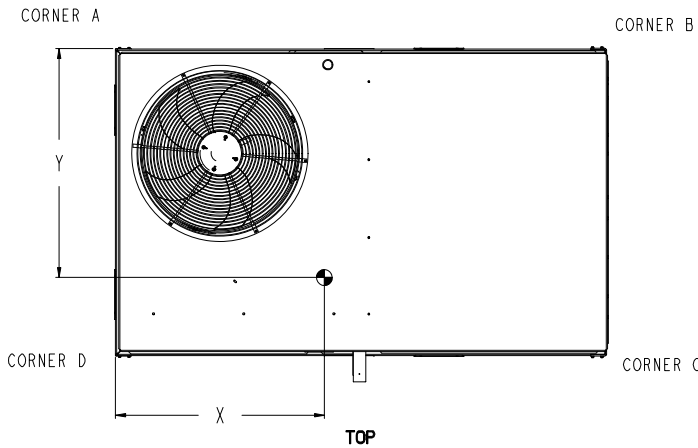
Project: Pandora - Rookwood Commons
 Prepared By: Jeff Gries

11/15/2022
 04:42PM

UNIT	STD. UNIT WEIGHT *		CORNER WEIGHT (A)		CORNER WEIGHT (B)		CORNER WEIGHT (C)		CORNER WEIGHT (D)		C.G.			HEIGHT
	LBS.	KG.	LBS.	KG.	LBS.	KG.	LBS.	KG.	LBS.	KG.	X	Y	Z	
48FC**04	482	219	113	51	116	53	128	58	125	57	37 5/8 [956]	24 9/16 [624]	18 1/4 [464]	
48FC**05	543	246	138	63	133	60	133	60	138	63	36 1/2 [927]	23 3/8 [594]	18 [457]	
48FC**06	556	252	142	64	136	62	136	62	142	64	36 1/2 [927]	23 3/8 [594]	18 [457]	
48FC**07	607	275	162	73	152	69	141	64	151	68	36 [914]	22 1/2 [572]	19 3/8 [492]	

* STANDARD UNIT WEIGHT IS WITH LOW GAS HEAT AND WITHOUT PACKAGING.
 FOR OTHER OPTIONS AND ACCESSORIES, REFER TO THE PRODUCT DATA CATALOG.

THIS DOCUMENT IS THE PROPERTY OF UTC CLIMATE CONTROLS & SECURITY AND IS DELIVERED UPON THE EXPRESS CONDITION THAT THE CONTENTS WILL NOT BE DISCLOSED OR USED WITHOUT WRITTEN CONSENT.
 SUBMISSION OF THESE DRAWINGS OR DOCUMENTS DOES NOT CONSTITUTE PART PERFORMANCE OR ACCEPTANCE OF CONTRACT.



NOTES:
 1. FOR ALL MINIMUM CLEARANCES LOCAL CODES OR JURISDICTIONS MAY PREVAIL.

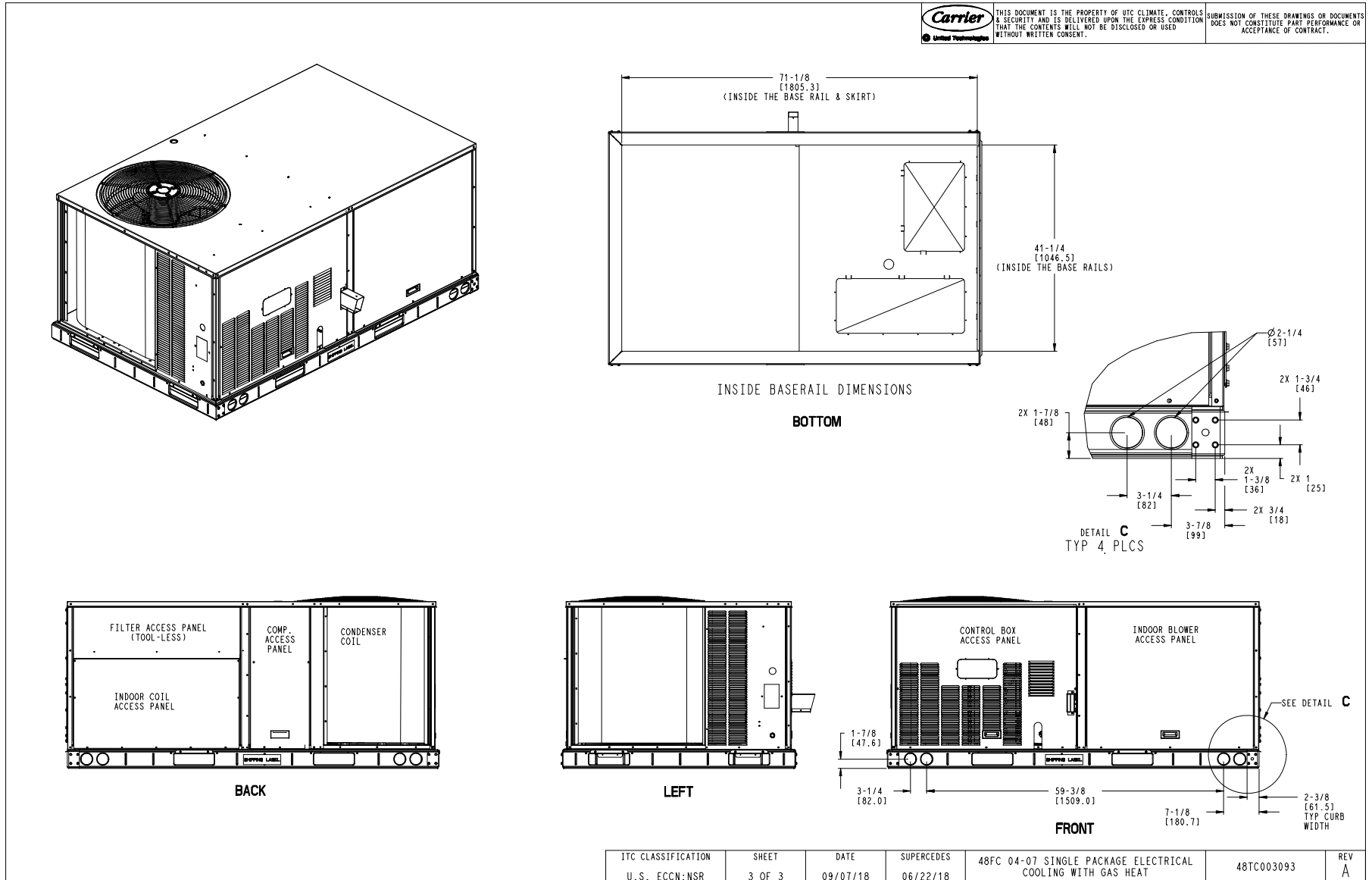
SURFACE	CLEARANCE		OPERATING CLEARANCE
	SERVICE WITH: CONDUCTIVE BARRIER	SERVICE WITH: NONCONDUCTIVE BARRIER	
FRONT	48 [1219mm]	36 [914mm]	18 [457mm]
LEFT	48 [1219mm]	42 [1067mm]	18 [457mm]
BACK	48 [1219mm]	42 [1067mm]	18 [457mm]
BACK W/HOOD	36 [914mm]	36 [914mm]	18 [457mm]
RIGHT	36 [914mm]	36 [914mm]	18 [457mm]
TOP	72 [1829mm]	72 [1829mm]	72 [1829mm]

ITC CLASSIFICATION U.S. ECCN:NSR	SHEET 2 OF 3	DATE 09/07/18	SUPERCEDES 06/22/18	48FC 04-07 SINGLE PACKAGE ELECTRICAL COOLING WITH GAS HEAT	48TC003093	REV A
-------------------------------------	-----------------	------------------	------------------------	--	------------	----------

Certified Drawing for RTU-1

Project: Pandora - Rookwood Commons
 Prepared By: Jeff Gries

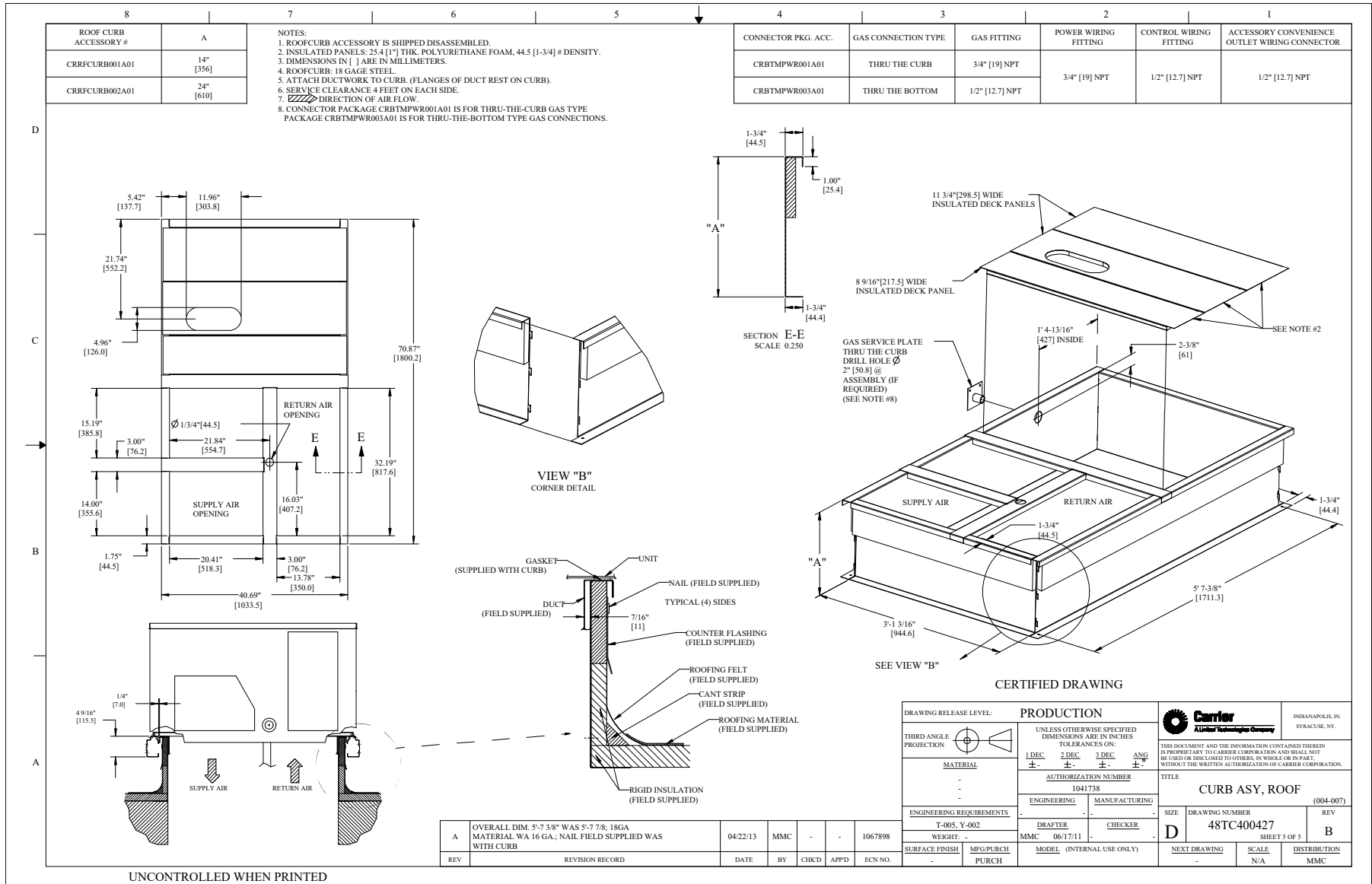
11/15/2022
 04:42PM



Certified Drawing for RTU-1

Project: Pandora - Rookwood Commons
Prepared By: Jeff Gries

11/15/2022
04:42PM



Performance Summary For RTU-1

Project: Pandora - Rookwood Commons
Prepared By: Jeff Gries

11/15/2022
04:42PM

Part Number: 48FCEA05A3A5-0A0A0

ARI SEER:..... **14.00**

Base Unit Dimensions

Unit Length:..... **74.4** in
Unit Width: **46.6** in
Unit Height: **33.4** in

Operating Weight

Base Unit Weight: **498** lb
Medium Heat:..... **63** lb
Direct Drive - EcoBlue - High Static: **5** lb

Accessories

STANDARD LEAK - Vertical EconoMi\$er X with solid-state W7220 controller: **50** lb
14-inch Tall Roof Curb: **115** lb

Total Operating Weight: **731** lb

Unit

Unit Voltage-Phase-Hertz: 208-3-60
Air Discharge: Vertical
Fan Drive Type: Vane Axial
Actual Airflow: 1600 CFM
Site Altitude: **0** ft

Cooling Performance

Condenser Entering Air DB: **95.0** F
Evaporator Entering Air DB: **80.0** F
Evaporator Entering Air WB: **67.0** F
Entering Air Enthalpy: **31.44** BTU/lb
Evaporator Leaving Air DB: **60.1** F
Evaporator Leaving Air WB: **57.5** F
Evaporator Leaving Air Enthalpy: **24.71** BTU/lb
Gross Cooling Capacity: **48.41** MBH
Gross Sensible Capacity: **34.31** MBH
Compressor Power Input: **3.44** kW
Coil Bypass Factor: **0.129**

Heating Performance

Heating Airflow: 1600 CFM
Entering Air Temp: **70.0** F
Leaving Air Temp: **120.9** F
Gas Heating Input Capacity: **110.0** MBH
Gas Heating Output Capacity: **88.0** MBH
Temperature Rise: **50.9** F
Thermal Efficiency (%): **80.0**

Supply Fan

External Static Pressure: 1.00 in wg
Options / Accessories Static Pressure
Economizer: **0.07** in wg
Application External Static (ESP + Unit Opts/Acc.): **1.07** in wg
Fan RPM: 2156
Fan Power: 1.08 BHP
NOTE: **Selected IFM RPM Range: 1262 - 2660**

Selection includes construction throwaway filter into the base fan curve. This filter is not MERV Rated.

Electrical Data

Voltage Range: **187 - 253**

Performance Summary For RTU-1

Project: Pandora - Rookwood Commons
 Prepared By: Jeff Gries

11/15/2022
 04:42PM

Compressor #1 RLA:.....	13.7
Compressor #1 LRA:.....	83
Indoor Fan Motor Type:.....	HIGH
Indoor Fan Motor FLA (Total):.....	5.5
Combustion Fan Motor FLA (ea):.....	0.48
Power Supply MCA:.....	25
Power Supply MOCP (Fuse or HACR):.....	30
Disconnect Size FLA:.....	24
Disconnect Size LRA:.....	95
Electrical Convenience Outlet:.....	None
Outdoor Fan [Qty / FLA (ea)]:.....	1 / 1.5

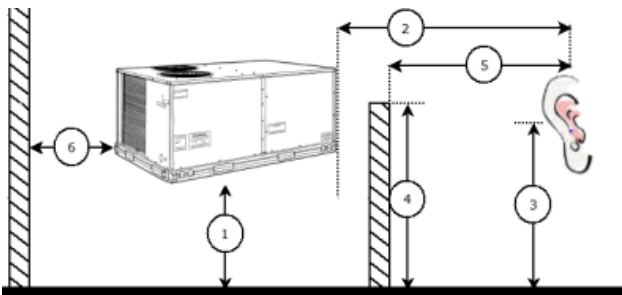
Control Panel SCCR: 5kA RMS at Rated Symmetrical Voltage

Acoustics

Sound Power Levels, db re 10E-12 Watts

	Discharge	Inlet	Outdoor
63 Hz	95.6	90.7	85.6
125 Hz	87.0	81.7	84.7
250 Hz	80.8	73.6	80.5
500 Hz	74.9	68.1	76.0
1000 Hz	72.0	69.5	72.4
2000 Hz	69.3	61.2	68.0
4000 Hz	65.1	54.6	62.8
8000 Hz	61.1	48.3	59.3
A-Weighted	79.3	73.8	79.0

Advanced Acoustics



Advanced Acoustics Parameters

- 1. Unit height above ground: **30.0** ft
- 2. Horizontal distance from unit to receiver: **50.0** ft
- 3. Receiver height above ground: **5.7** ft
- 4. Height of obstruction: **0.0** ft
- 5. Horizontal distance from obstruction to receiver: **0.0** ft
- 6. Horizontal distance from unit to obstruction: **0.0** ft

Detailed Acoustics Information

Octave Band Center Freq. Hz	63	125	250	500	1k	2k	4k	8k	Overall
A	85.6	84.7	80.5	76.0	72.4	68.0	62.8	59.3	89.2 Lw
B	59.4	68.6	71.9	72.8	72.4	69.2	63.8	58.2	78.5 LwA
C	53.2	52.3	48.1	43.6	40.0	35.6	30.4	26.9	56.8 Lp

Performance Summary For RTU-1

Project: Pandora - Rookwood Commons
 Prepared By: Jeff Gries

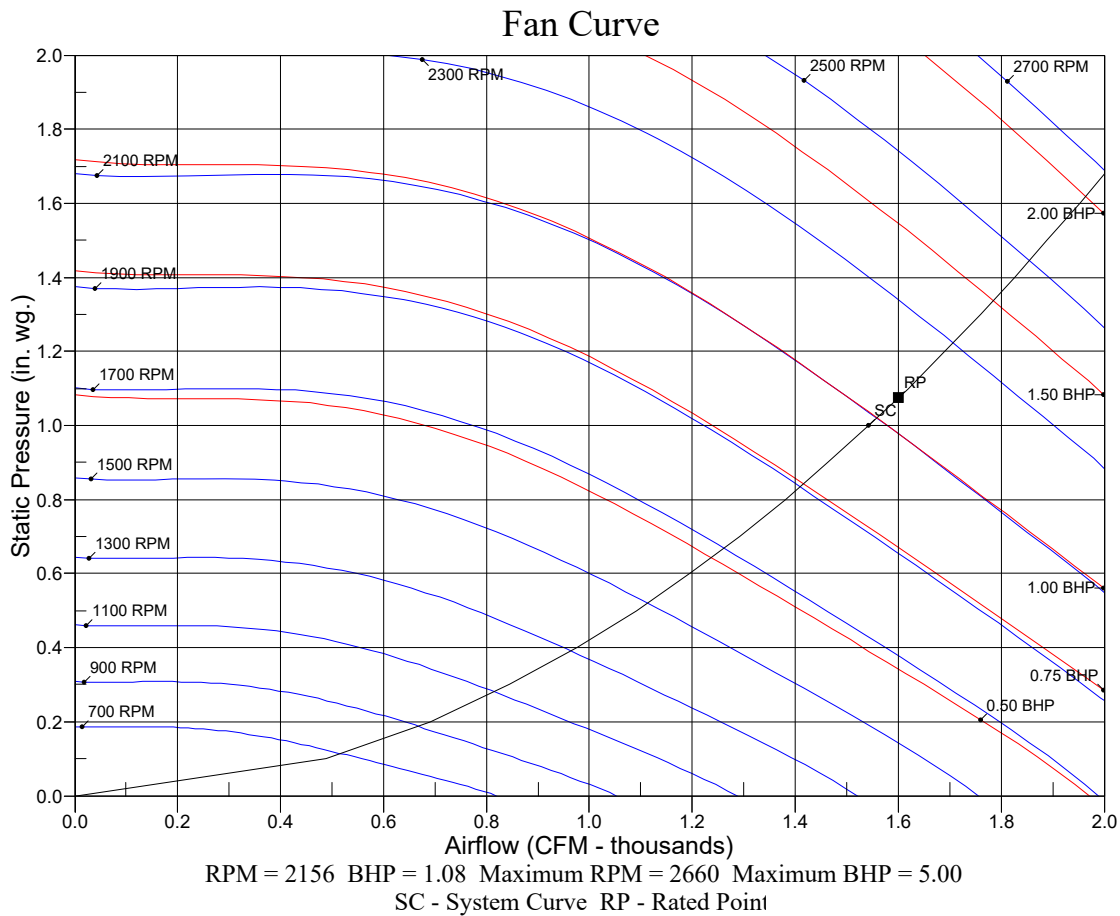
11/15/2022
 04:42PM

D	27.0	36.2	39.5	40.4	40.0	36.8	31.4	25.8	46.1 LpA
---	------	------	------	------	------	------	------	------	----------

Legend

- A Sound Power Levels at Unit's Acoustic Center, Lw
- B A-Weighted Sound Power Levels at Unit's Acoustic Center, LwA
- C Sound Pressure Levels at Specific Distance from Unit, Lp
- D A-Weighted Sound Pressure Levels at Specific Distance from Unit, LpA

Calculation methods used in this program are patterned after the ASHRAE Guide; other ASHRAE Publications and the AHRI Acoustical Standards. While a very significant effort has been made to insure the technical accuracy of this program, it is assumed that the user is knowledgeable in the art of system sound estimation and is aware of the tolerances involved in real world acoustical estimation. This program makes certain assumptions as to the dominant sound sources and sound paths which may not always be appropriate to the real system being estimated. Because of this, no assurances can be offered that this software will always generate an accurate sound prediction from user supplied input data. If in doubt about the estimation of expected sound levels in a space, an Acoustical Engineer or a person with sound prediction expertise should be consulted.



Unit Feature Sheet for RTU-1

Project: Pandora - Rookwood Commons
Prepared By: Jeff Gries

11/15/2022
04:42PM



PACKAGED ROOFTOP GAS HEATING/ELECTRIC COOLING UNITS – 3, 4, 5 TON - 13.4 SEER2 and 14.0 SEER, 6 TON - 15.0 IEER



WEATHERMAKER SERIES

48FC units are single packaged gas heating, electric cooling units that are pre-wired and charged with Puron (R-410) refrigerant. The units are factory tested in both heating and cooling modes. 3-5 ton models use single stage cooling capacity control. 6 ton model uses two stage cooling capacity control.

Approved and certified by:



Use of the AHRI Certified TM Mark indicates a manufacturer's participation in the program for verification of certification for individual products, go to www.ahridirectory.org.

STANDARD FEATURES INCLUDE:

- Puron (R-410A) HFC refrigerant
- Meets or exceeds ASHRAE 90.1 energy efficiency levels
- Scroll compressors with internal line break and overload protection
- Single-stage cooling capacity 04-06 models, Two Stage on 07 models
- SEER2's up to 13.8
- SEER's to 14.0, IEER's to 15.0
- Acutrol™ refrigerant metering system on 04-06 models, TXV on 07 size models
- Exclusive non-corrosive composite condensate pan in accordance with ASHRAE Standard 62, sloping design, side or center drain
- Standard cooling operation up to 115°F (46°C) and down to 40°F (4°C) - down to 25° F (-4° C) with winter start kit.
- Pre-painted exterior panels and primer-coated interior panels tested to 500 hours salt spray protection
- Fully insulated cabinet
- NEW Direct Drive – EcoBlue™ Technology Indoor fan system uses Vane Axial fan design and electronically commutated motor
- New Unit Control Board with intuitive quick fan speed adjustment
- Exclusive IGC solid-state control for on-board diagnostics with LED error code designation burner control logic
- Induced draft gas heat combustion design
- Redundant gas valves with up to two stages of heating
- Low pressure and high pressure switch protected.

MAINTENANCE FEATURES:

- Access panels with easy grip handles
- Innovative easy starting, no-strip screws on unit access panels
- Two-inch disposable return air filters and Tool-less filter access door
- New unit control board to facilitate simple safety circuit troubleshooting and simplified control box arrangement

INSTALLATION FEATURES:

- Thru-the-bottom power entry capability
- Single point gas and electric connections
- Full perimeter base rail with built-in rigging adapters and fork slots
- Field convertible from vertical to horizontal airflow

STANDARD WARRANTY:

- 10-year heat exchanger – 15-year stainless steel option
- 5-year compressor
- 3-year SystemVu™
- 1-year parts
- Many optional upgrades also available

OPTIONS INCLUDE BUT ARE NOT LIMITED TO:

- Intelligent SystemVu communicating controls
- RTU Open Multi-Protocol DDC Controls
- Supply and Return Air Smoke Detectors, high static motors
- Louvered condenser coil guards
- Disconnect switch and convenience outlet options
- Stainless Steel heat exchanger option
- Corrosion resistant coil coating.
- MERV-8 and 13 Return Air Filters
- Patented Humidi-MiZer® adaptive dehumidification system.
- Hinged access panels
- Integrated economizer system. Low and Ultra Low Leak versions
- Phase Monitor Protection
- Condensate Overflow Protection

For a complete list of options and accessories refer to the Product Data Catalog for this unit.