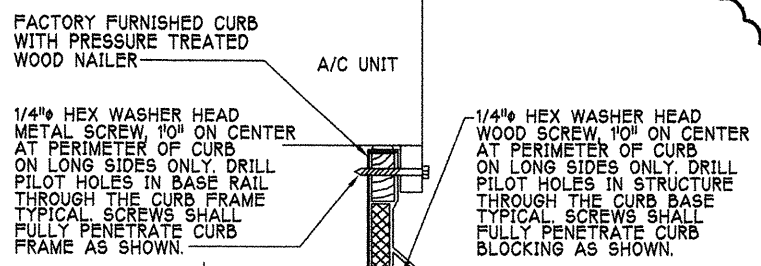
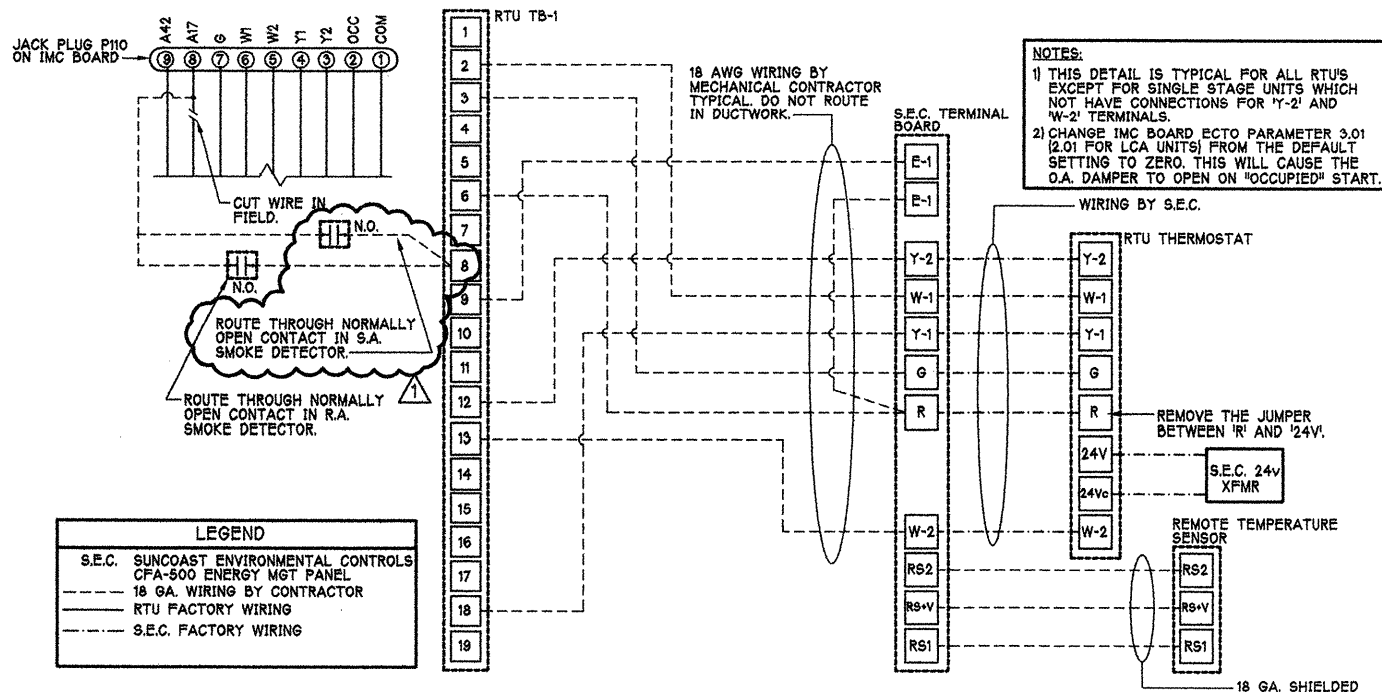


AIR BALANCE SCHEDULE

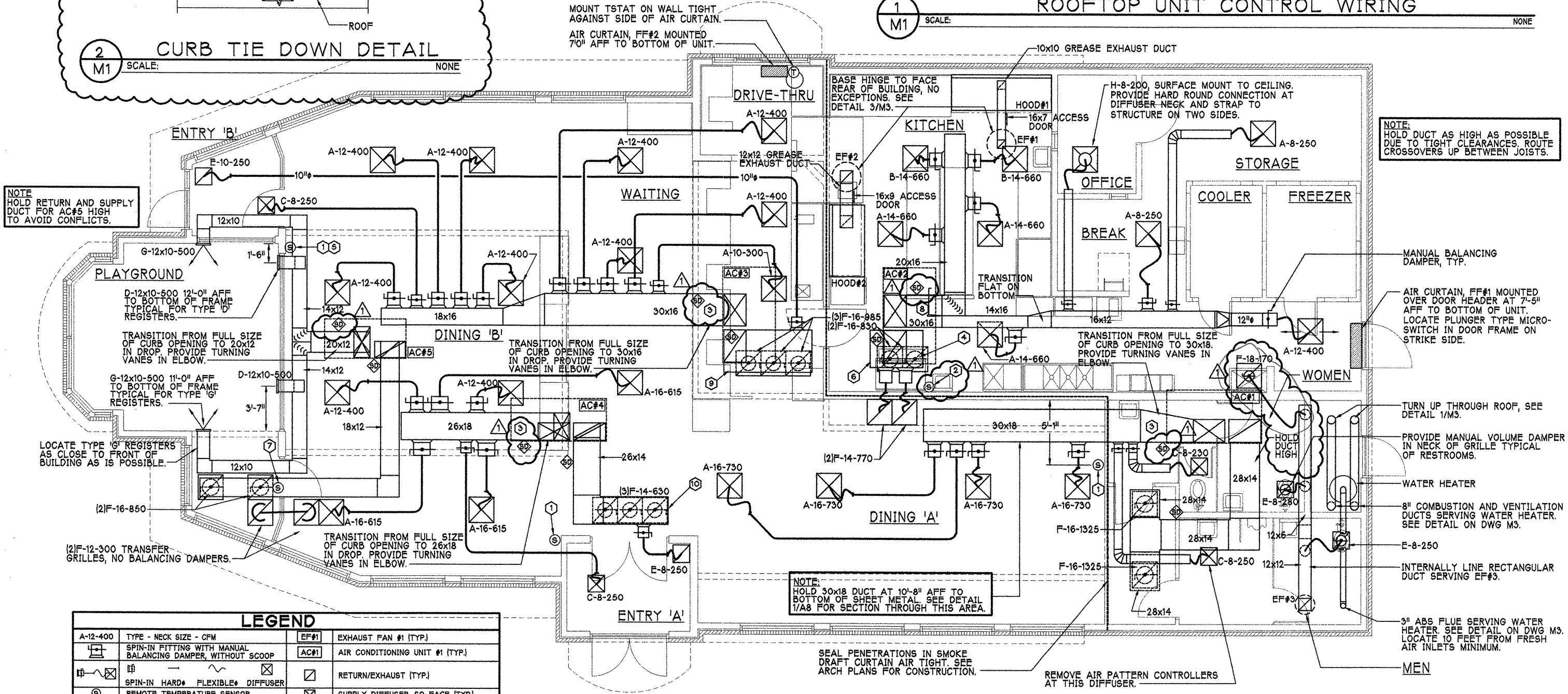
AIR TYPE	TOTAL CFM
SUPPLY	16,445
RETURN	12,895
EXHAUST	3,322
OUTSIDE AIR	3,550
BUILDING POSITIVE PRESSURE	228

KEY NOTES

- MOUNT REMOTE SENSOR ON WALL AT 5'-0" AFF AND ROUTE WIRING BACK TO SUNCOAST TEMPERATURE CONTROL PANEL.
- MOUNT REMOTE SENSOR ON WALL AT 7'-0" AFF BETWEEN THE ICE MAKER AND HAND SINK, APPROX 8" FROM FRONT WALL. ROUTE WIRING TO SUNCOAST TEMPERATURE CONTROL PANEL.
- BRANCH TAKE-OFFS ARE NOT TO BE LOCATED CLOSER THAN 4'-0" FROM THE ELBOW AT THE SUPPLY AIR DROP FROM CURB.
- PROVIDE TITUS MODEL D-100 NECK DAMPER, TYPICAL OF ALL TYPE 'F' RETURN AIR GRILLES IN LIEU OF DAMPER AT SPIN-IN, U.N.O.
- LOCATE AS FAR AWAY FROM DOOR AS POSSIBLE.
- HOLD 52"x36"x12" DEEP PLENUM CLOSE TO STRUCTURE TO ALLOW BOTTOM TAKE-OFF OF RETURN DUCT FROM CEILING GRILLES. ROUTE FROM FULL SIZE OF CURB OPENING TO TOP OF PLENUM. ROOF JOIST OBSTRUCTS LOWER 5" OF RETURN AIR OPENING, FABRICATE VERTICAL DROP WITH OFFSET TO AVOID STRUCTURE. SEE DWG 5-3.
- MOUNT REMOTE SENSOR FOR PLAYGROUND 9'-6" AFF NEAR THE RETURN AIR GRILLE ON THE WALL, AND ROUTE WIRING BACK TO SUNCOAST TEMPERATURE CONTROL PANEL.
- TRANSITION FROM FULL SIZE OF CURB OPENING TO 30x16 IN DROP. PROVIDE TURNING VANES IN ELBOW.
- HOLD 85"x41"x14" DEEP PLENUM CLOSE TO STRUCTURE TO ALLOW BOTTOM TAKE-OFF OF RETURN DUCT FROM CEILING GRILLES. ROUTE FROM FULL SIZE OF CURB OPENING TO TOP OF PLENUM. ROOF JOIST OBSTRUCTS LOWER 5" OF RETURN AIR OPENING, FABRICATE VERTICAL DROP WITH OFFSET TO AVOID STRUCTURE. SEE DWG 5-3.
- HOLD PLENUM CLOSE TO STRUCTURE TO ALLOW BOTTOM TAKE-OFF OF RETURN DUCT FROM CEILING GRILLES.



1 M1 ROOFTOP UNIT CONTROL WIRING



LEGEND

TYPE - NECK SIZE - CFM	TYPE	EXHAUST FAN #1 [TYP.]
SPIN-IN FITTING WITH MANUAL BALANCING DAMPER, WITHOUT SCOOP	EF#1	AIR CONDITIONING UNIT #1 [TYP.]
SPIN-IN HARD FLEXIBLE DIFFUSER	AC#1	RETURN/EXHAUST [TYP.]
REMOTE TEMPERATURE SENSOR		SUPPLY DIFFUSER, SQ FACE [TYP.]
PLAN NOTE REFERENCE		SPLITTER DAMPER
SMOKE DETECTOR		MANUAL VOLUME DAMPER
DUCT SIZE		DIRECTION OF THROW ON DIFFUSER
1ST NUMBER - HORIZONTAL DIMENSION		
2ND NUMBER - VERTICAL DIMENSION		

SHEET NOTES

- DUCT SIZES SERVING DIFFUSERS AND GRILLES ARE SAME SIZE AS DIFFUSER OR GRILLE NECK UNLESS NOTED OTHERWISE.

CHICK-FIL-A S97-136
March 1, 2001 Edition
2136 North Monroe Street
Tallahassee, Florida

BENNER ENGINEERING, LLC
216 VALLEY ROAD
NORCROSS, GEORGIA 30071
PHONE: 770-729-1422
FAX: 770-729-0490
E-MAIL: rdbenner@bennerspring.com

REVISIONS

NO.	DATE	DESCRIPTION
1	06/08/01	BUILDING DEPT COMMENTS

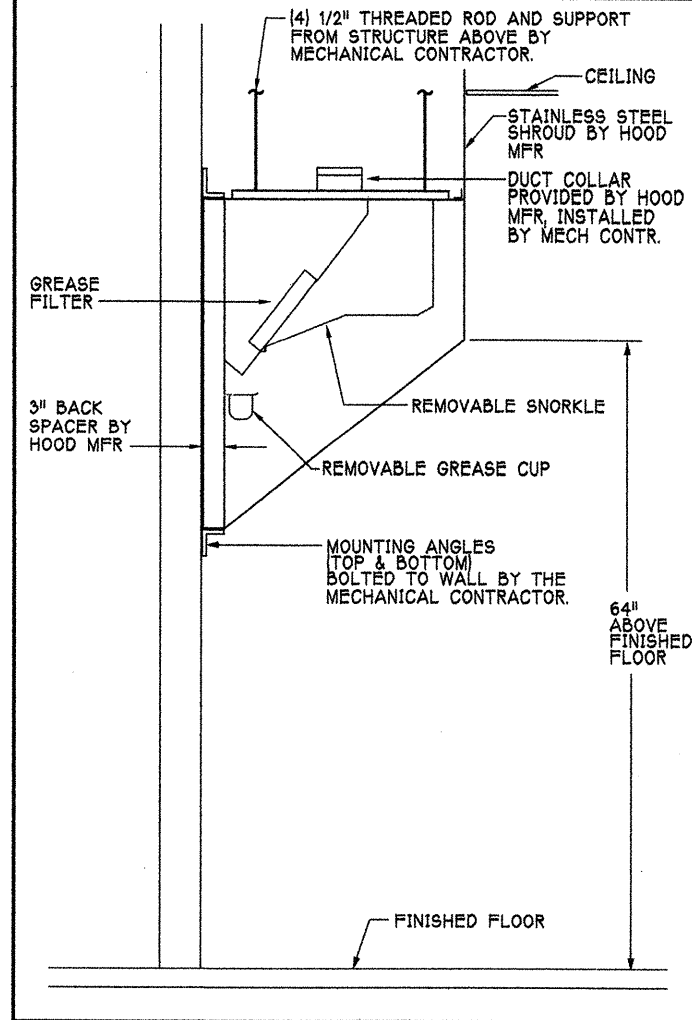
JOB NUMBER: 01030
DATE: 04/02/01
MECHANICAL FLOOR PLAN
M1
Tallahassee, FL

3/14/01 4:45 PM
ml.dwg

GENERAL NOTES

- CHICK-FIL-A MAINTAINS A NATIONAL ACCOUNT WITH LDI MANUFACTURING, INC. CHICK-FIL-A WILL PURCHASE AND PROVIDE THE HOODS FOR INSTALLATION BY THE GENERAL CONTRACTOR. THE HOODS ARE FACTORY PREPIPED FOR AN ANSUL R-102 WET SUPPRESSION SYSTEM.
- REFER TO "PART 2 CONTROLS" OF THE MECHANICAL SPECIFICATIONS FOR DIFFERENTIATION BETWEEN CONTROL AND POWER WIRING RESPONSIBILITIES.
- ANY CONTACTORS OR WIRING REQUIRED FOR SHUT-OFF OF ELECTRIC COOKING EQUIPMENT SHALL BE FURNISHED AND INSTALLED BY ELECTRICAL CONTRACTOR.
- ALL ROOF CURBS SHALL BE SHIMMED LEVEL.
- ROOF CURBS FOR EXHAUST SYSTEMS SHALL BE INSTALLED IN ACCORDANCE WITH THE "NATIONAL ROOFING CONTRACTORS ASSOCIATION" GUIDELINES, AND THE ROOFING SUPPLIER'S DETAILS AND GUIDELINES FOR THE SPECIFIC ROOFING MATERIALS USED. ALL CURB INSULATION SHALL BE SUPPLIED AND INSTALLED BY ROOFING CONTRACTOR.
- THE GENERAL CONTRACTOR SHALL PROVIDE ALL ROOFCUT OPENINGS AND OTHER STRUCTURAL REQUIREMENTS FOR THE INSTALLATION OF ALL ROOF EQUIPMENT. REFER TO STRUCTURAL FRAMING PLAN FOR EQUIPMENT LOCATION DIMENSIONS.
- THE FIRE SUPPRESSION SYSTEM CONSISTS OF A COMPLETE WET ANSUL SYSTEM FOR HOODS #1 & #2 AND SHALL BE FURNISHED BY THE HOOD MANUFACTURER. COMPONENTS AND INSTALLATION SHALL MEET THE REQUIREMENTS OF NFPA-96, NFPA-17A AND ALL APPLICABLE STATE AND FEDERAL CODES AND STANDARDS.
- THE R-102 ANSUL FIRE SUPPRESSION SYSTEM EXTERNAL TO THE HOODS SHALL BE INSTALLED IN ACCORDANCE WITH HOOD MANUFACTURER'S SHOP DRAWINGS BY AN AUTHORIZED ANSUL SYSTEM INSTALLER HIRED BY THE GENERAL CONTRACTOR.
- PORTABLE FIRE EXTINGUISHERS IN THE KITCHEN SHALL BE PROVIDED BY THE GENERAL CONTRACTOR IN COMPLIANCE WITH NFPA-10 AND LOCAL REQUIREMENTS.
- OUTLETS OF EXHAUST FANS SHALL BE AT LEAST 40 INCHES ABOVE ROOF LINE.
- EXHAUST FANS SHALL BE LOCATED A MINIMUM OF 10 FEET FROM ANY FRESH AIR INTAKE. MEASUREMENT SHALL BE MADE USING STRETCHED STRING METHOD.
- HOOD EXHAUST DUCTWORK SHALL BE 16 GA. BLACK STEEL WITH CONTINUOUS LIQUID TIGHT WELD OF JOINTS & SEAMS.
- URNS IN GREASE EXHAUST DUCTWORK SHALL BE LONG RADIUS TYPE, R=3W/2, NO EXCEPTIONS ALLOWED. NO MITERED FITTINGS ALLOWED.
- HOODS AND ASSOCIATED DUCTWORK SHALL BE INSTALLED PER NFPA 96 AND LOCAL CODES.
- ALL STAINLESS STEEL SHROUDS SHALL BE SUPPLIED BY HOOD MANUFACTURER AND INSTALLED BY THE GENERAL CONTRACTOR ACCORDING TO MANUFACTURER'S RECOMMENDATIONS.
- HOODS, FANS AND ACCESS DOORS SHALL BE LISTED BY UNDERWRITERS LABORATORIES INC. AND SHALL MEET REQUIREMENTS OF NFPA-96.
- ACCESS DOORS SHALL BE REMOVABLE WITHOUT USE OF TOOLS AND BE PROVIDED WITH GASKET SEAL.
- SLOPE ALL GREASE EXHAUST DUCT BACK TO HOOD AT 1" PER FOOT OF RUN.

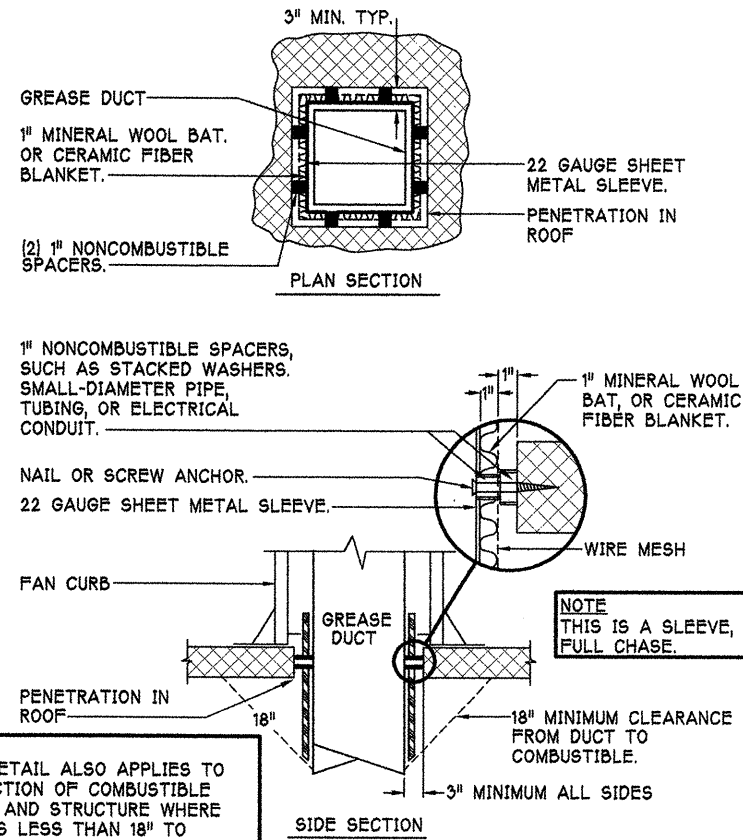
SIDE VIEW OF HOOD



HOOD SCHEDULE

MARK	CFM	SP AT COLLAR	TYPE	COLLAR SIZE	LENGTH	HEIGHT	DEPTH	MANUFACTURER	MODEL	REMARKS
HOOD#1	1144	.75"	BACK SHELF	10"x10"	8'0"	45"	3"	LDI MFG CO.	ELS-M	1,2,3,4,5,6,7
HOOD#2	1648	.75"	BACK SHELF	12"x12"	5'10"	45"	3"	LDI MFG CO.	ELS-M	1,2,4,6,7

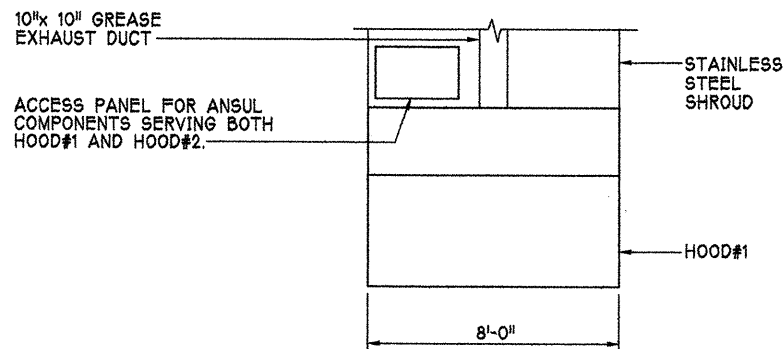
REMARKS:
 1) STAINLESS STEEL CONSTRUCTION.
 2) MAKE-UP PROVIDED THROUGH ROOFTOP EQUIPMENT.
 3) PROVIDE COOKING TIMER BRACKET.
 4) PROVIDE SHROUD.
 5) PROVIDE RECESSED ANSUL CABINET.
 6) PROVIDE ANSUL WET FIRE EXTINGUISHING SYSTEM.
 7) PROVIDE 3" BACK SPACER.



NOTE THIS DETAIL ALSO APPLIES TO PROTECTION OF COMBUSTIBLE WALLS AND STRUCTURE WHERE DUCT IS LESS THAN 18" TO THESE COMBUSTIBLE COMPONENTS.

GREASE EXHAUST DUCT CLEARANCE REDUCTION SYSTEM

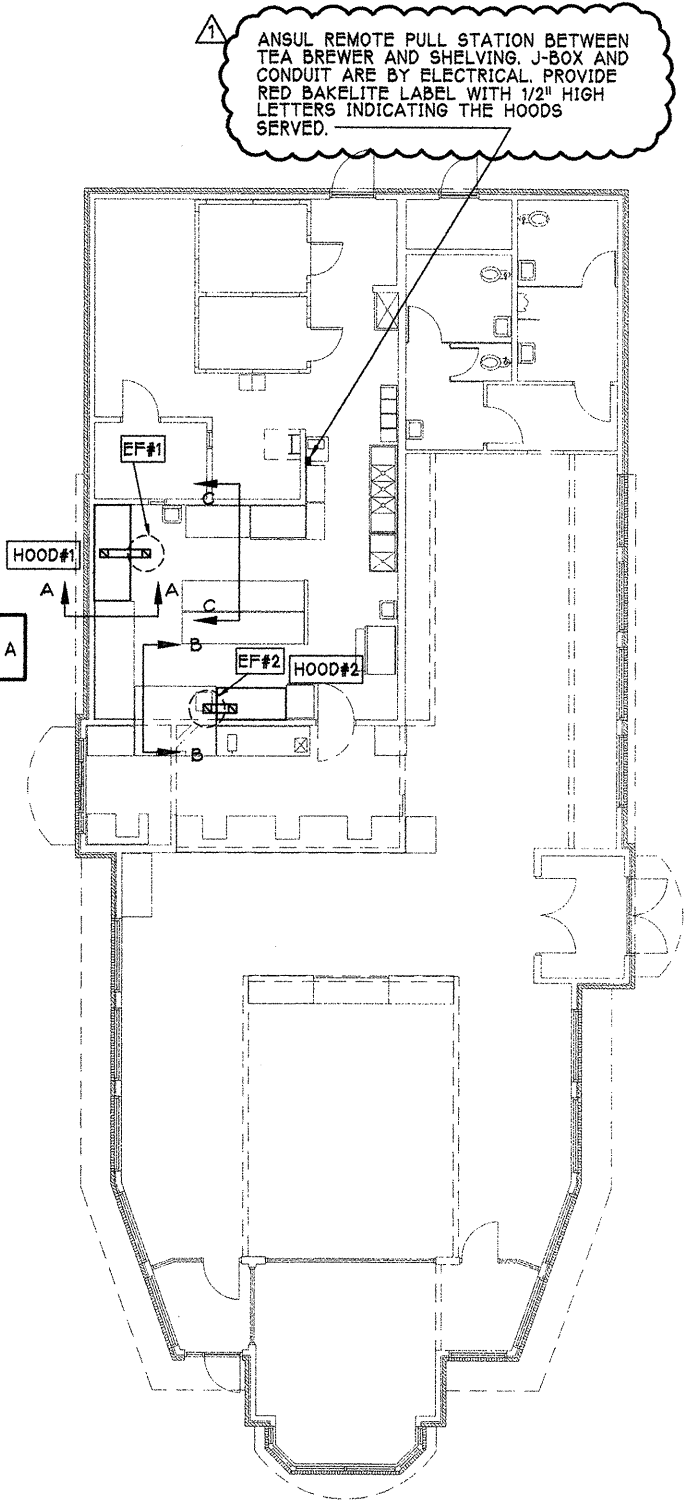
1 M2 SCALE: NONE



SECTION "C-C"

ANSUL ACCESS PANEL

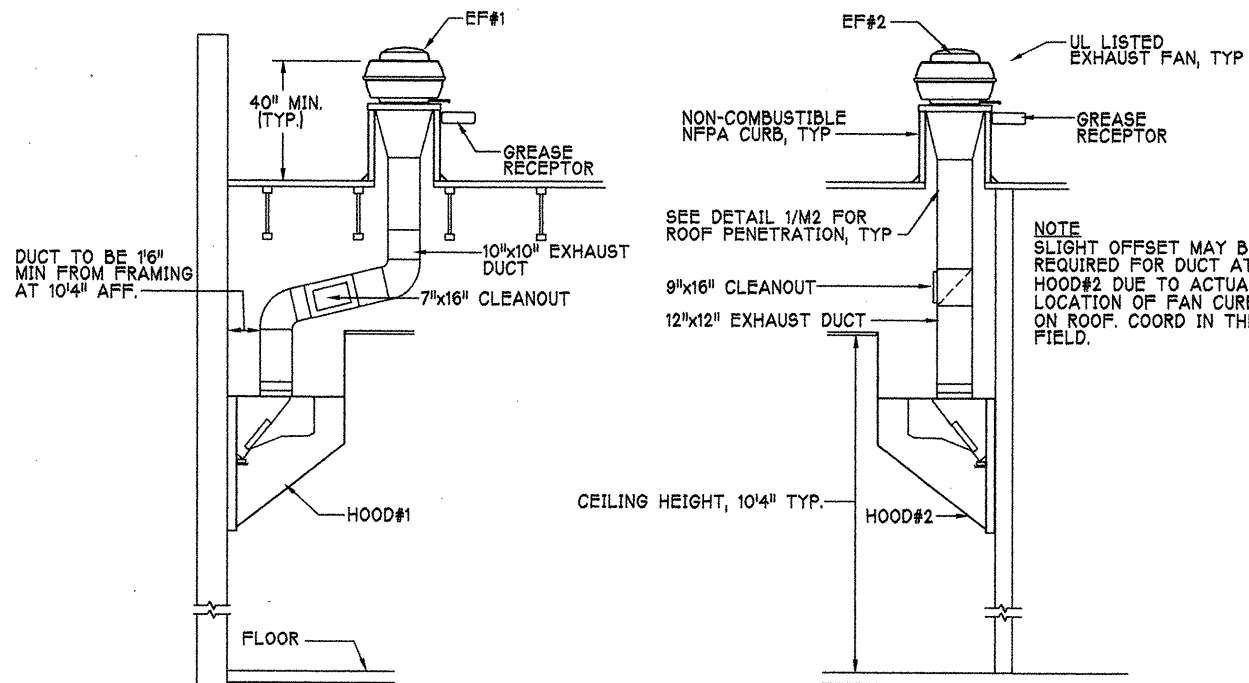
SCALE: NONE



NOTE: SEE ARCH. PLANS FOR HOOD LOCATIONS.

HOOD LAYOUT

SCALE: 1/8"=1'-0"



SECTION "A-A"

SECTION "B-B"

HOOD ELEVATIONS

SCALE: NONE

CHICK-FIL-A 997-136
 March 1, 2001 Edition
 2136 North Monroe Street
 Tallahassee, Florida

BENNER ENGINEERING, LLC
 216 VALLEY ROAD
 NORCROSS, GEORGIA
 30071
 PHONE: 770/729-1422
 FAX: 770/729-0490
 E-MAIL: rdbenner@mindspring.com



REVISIONS
 #1 06/08/01 BUILDING DEPT COMMENTS

JOB NUMBER
 01030

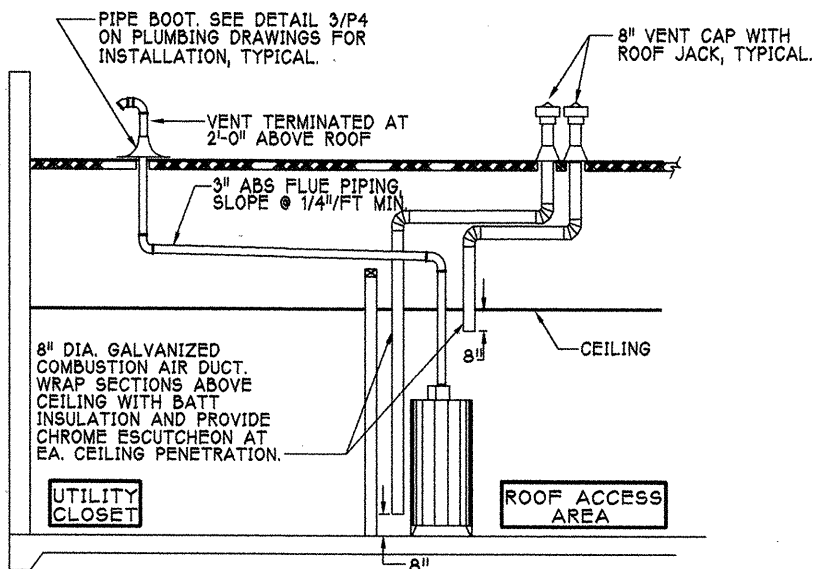
DATE
 04/02/01

HOOD DETAILS AND SCHEDULES

M2

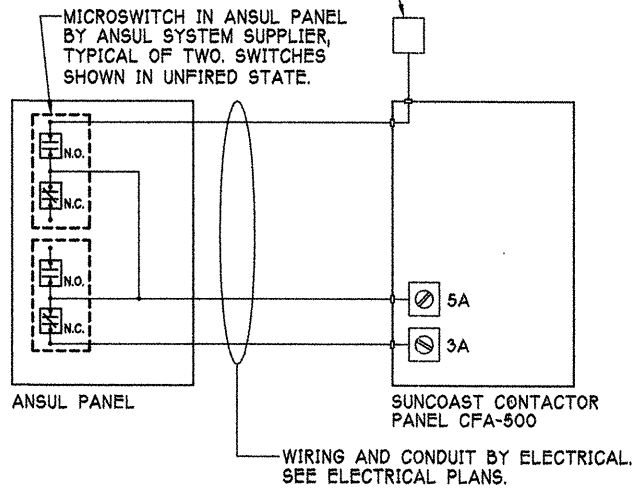
Tallahassee, FL

NOTE:
LOCATE FLUE VENT 10'-0" FROM
NEAREST FRESH AIR INLET, MIN.



1 WATER HEATER VENT/C.A. ROUTING
M3 SCALE: NONE

JUNCTION BOX FOR DISTRIBUTION BY
ELECTRICAL TO SHUNT TRIP BREAKERS
IN PANELS "C" AND "D".



NOTES:
WORK SHOWN IN THIS DETAIL IS THE RESPONSIBILITY
OF THE ELECTRICAL CONTRACTOR.

2 ANSUL WIRING DIAGRAM
M3 SCALE: NONE

GAS FIRED ROOFTOP UNIT SCHEDULE

MARK	COOLING CAPACITY (MBH)		HEATING CAPACITY (MBH)		FAN SECTION (CFM)			MODEL	MANUFACTURER	REMARKS
	TOTAL	SENS	INPUT	OUTPUT	SUPPLY	O.A.	HP ESP			
AC#1	103.2	69.0	130.0	104.0	3,400	750	2 .65	LGA102HS	LENNOX	1,2,3,4,5,6,7,8,9,10,11,12,13
AC#2	146.2	102.3	235.0	188.0	4,400	1,200	3 .65	LGA150SH	LENNOX	1,2,3,4,5,6,7,8,9,10,11,12,13
AC#3	106.1	79.7	130.0	104.0	3,750	545	2 .65	LGA102HS	LENNOX	1,2,3,4,5,6,7,8,9,10,11,12,13
AC#4	88.9	67.3	125.0	100.0	2,895	755	2 .65	LGA088HS	LENNOX	1,2,3,4,5,6,7,8,9,10,11,12,13
AC#5	63.2	46.1	78.0	61.6	2,000	300	1.5 .65	LGA060HS	LENNOX	1,2,3,4,5,6,7,8,9,10,11,12,13

NOTES
COOLING CAPACITIES ARE GROSS, BASED ON INDOOR Edb: 80F, INDOOR Ewb: 67F, OUTDOOR Edb: 95F

- REMARKS
- 1) SEE DWG. M-4 FOR CONTROLS, SMOKE DETECTORS AND SEQUENCE OF OPERATION.
 - 2) PROVIDE AUTOMATIC 0-100% OUTSIDE AIR DAMPER.
 - 3) PROVIDE 14" HIGH ROOF CURB.
 - 4) CONTRACTOR SHALL REFER TO ROOF FRAMING PLAN FOR EXACT A/C UNIT LOCATIONS.
 - 5) FRESH AIR INTAKES SHALL BE LOCATED A MINIMUM OF 10'-0" FROM ANY FLUE, VENT OR EXHAUST FAN.
 - 6) PROVIDE FACTORY INSTALLED 15V GFI SERVICE OUTLET.
 - 7) SEE ELECTRICAL DRAWINGS FOR ELECTRICAL CHARACTERISTICS PRIOR TO ORDERING EQUIPMENT.
 - 8) ROUTE CONTROL AND POWER WIRING THRU FACTORY BASE PAN CONNECTION.
 - 9) PROVIDE FACTORY INSTALLED NON-FUSED DISCONNECT.
 - 10) PROVIDE COIL HAIL GUARD ON FL, TX AND OK PROJECTS.
 - 11) PROVIDE 2" FARR 30/30 THROW AWAY FILTERS.
 - 12) PROVIDE HINGED PANELS FOR FILTER ACCESS, FAN MOTOR ACCESS, COMPRESSOR ACCESS AND CONTROL COMPARTMENT ACCESS.
 - 13) CHANGE HEATING SECTION SPUDS AT LOCATIONS WHERE ELEVATION EXCEEDS 2000' ABOVE SEA LEVEL AS RECOMMENDED BY MANUFACTURER.

EXHAUST FAN SCHEDULE

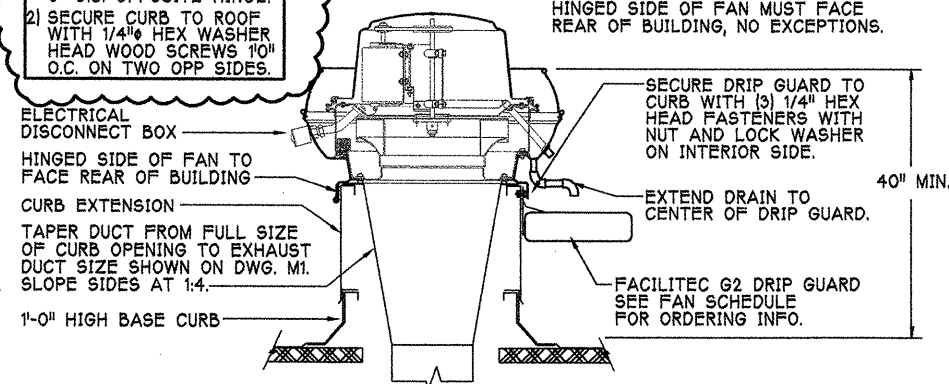
MARK	CFM	ESP	RPM	RPM	RPM	RPM	RPM	RPM	RPM	RPM	TIP SPEED (FPS)	HP	AREA SERVED	MODEL	MANUFACTURER	REMARKS
EF#1	1144	1.25	1476	1483	1498	1514	1539	1556	1585	1585	95	3/4	HOOD#1	NBRTD-140A	JENN	1,2,3,4,6,8,10
EF#2	1648	1.25	1712	1718	1730	1742	1762	1776	1799	110	3/4	HOOD#2	NBRTD-140A	JENN	1,2,3,4,6,8,10	
EF#3	530	.375	1108	1113	1124	1135	1154	1167	1187	59	1/4	RESTROOMS	RED1025S	JENN	2,5,7,8,10	

NOTES
GREASE EXHAUST FAN RPM BASED ON 78 DEGREE F AIR AT DIFFERENT ELEVATIONS ABOVE SEA LEVEL.

- REMARKS
- 1) PROVIDE FACTORY 1'-0" BASE CURB AND EXTENSION.
 - 2) PROVIDE FACTORY NON-FUSED DISCONNECT.
 - 3) PROVIDE FACTORY INSTALLED HINGED BASE KIT.
 - 4) PROVIDE AND INSTALL FACILITEC G2 DRIP GUARD. DRIP GUARD SHALL BE ORDERED AND INSTALLED BY THE MECHANICAL CONTRACTOR. THE COST OF THE DRIP GUARD IS BILLED TO CFA DIRECTLY BY FACILITEC. THE MECHANICAL CONTRACTOR IS TO CONTACT MR. JEAN JODOIN AT FACILITEC AT 800-284-8273 FOR ORDERING AND SHIPPING ARRANGEMENTS.
 - 5) PROVIDE BIRDSCREEN.
 - 6) STARTER BY ELECTRICAL CONTRACTOR.
 - 7) INTERLOCK WITH LIGHTS BY ELECTRICAL CONTRACTOR.
 - 8) PROVIDE 12" HIGH CURB.
 - 9) PROVIDE FACTORY INSTALLED AUTOMATIC BELT TENSIONER.
 - 10) CHICK-FIL-A HAS A NATIONAL ACCOUNT WITH JENN. THE FAN/CURB PACKAGE MUST BE PURCHASED BY THE MECHANICAL CONTRACTOR THROUGH SUNLOW ASSOCIATES IN ATLANTA, GA. TELEPHONE 800-678-6569. FANS NOT PURCHASED THROUGH SUNLOW WILL NOT BE ACCEPTED.

- NOTES:
- 1) SECURE FAN TO CURB WITH SHEET METAL SCREWS (#12 x 2") 6" O.C. OPPOSITE HINGE.
 - 2) SECURE CURB TO ROOF WITH 1/4" HEX WASHER HEAD WOOD SCREWS 10" O.C. ON TWO OPP SIDES.

NOTE:
HINGED SIDE OF FAN MUST FACE REAR OF BUILDING, NO EXCEPTIONS.



3 KITCHEN HOOD EXHAUST FAN
M3 SCALE: NONE

- NOTES:
- 1) SECURE FAN TO CURB WITH SHEET METAL SCREWS (#10 x 1-1/2") 6" O.C. ALL AROUND.
 - 2) SECURE CURB TO ROOF WITH 1/4" HEX WASHER HEAD WOOD SCREWS 10" O.C. ON TWO OPP SIDES.

ELECTRICAL DISCONNECT LOCATED INSIDE MOTOR COMPARTMENT

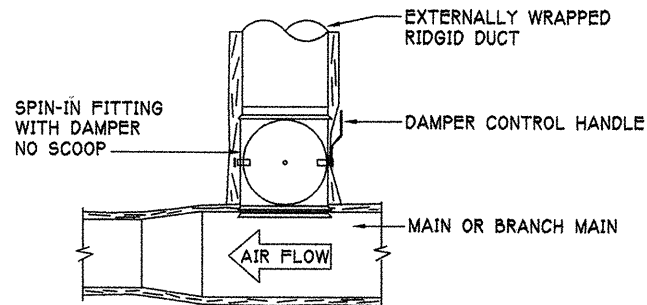
BIRDSCREEN

PRE-FABRICATED CURB

BACKDRAFT DAMPER

4 RESTROOM EXHAUST FAN
M3 SCALE: NONE

DAMPER CONTROL HANDLE MUST BE LEFT EXPOSED. ATTACH A YELLOW FLUORESCENT CONSTRUCTION RIBBON TO THE HANDLE. RIBBON MUST HANG 12" BELOW DUCT AND BE EASILY IDENTIFIABLE FOR TEST AND BALANCE CONTRACTOR.



NOTE: ABSOLUTELY NO HORIZONTAL RUNS OF FLEX DUCT

5 DIFFUSER TAKE-OFF
M3 SCALE: NONE

6 SPIN-IN COLLAR
M3 SCALE: NONE

AIR DEVICE SCHEDULE

MARK	DESCRIPTION	LOCATION	SIZE	CEILING TYPE	REMARKS
A	METALAIRE MODEL 7600AL-6 ALUMINUM SUPPLY AIR DIFFUSER WITH AIR PATTERN CONTROLLERS.	DINING AREA KITCHEN	24x24	LAY-IN	1,3
B	METALAIRE MODEL 7600AL-6 ALUMINUM SUPPLY AIR DIFFUSER WITH AIR PATTERN CONTROLLERS REMOVED.	KITCHEN	24x24	LAY-IN	1
C	METALAIRE MODEL 7000-1 ALUMINUM SUPPLY AIR DIFFUSER WITH AIR PATTERN CONTROLLERS.	VESTIBULES RESTROOMS	16x16	GYPSON	1,3,5
D	METALAIRE MODEL H4004D DOUBLE DEFLECTION ALUMINUM SIDEWALL SUPPLY REGISTER WITH OBD, FRONT BLADE PARALLEL TO LONG SIDE.	PLAYGROUND	12x10	NA	1
E	METALAIRE MODEL 7000R-1 ALUMINUM RETURN AIR GRILLE.	VESTIBULES RESTROOMS	16x16	GYPSON	1,4,5
F	METALAIRE MODEL 7600RAL-6 ALUMINUM RETURN AIR GRILLE.	DINING/KITCHEN PLAYGROUND	24x24	LAY-IN	1,2
G	METALAIRE MODEL V4004D DOUBLE DEFLECTION ALUMINUM SIDEWALL SUPPLY REGISTER WITH OBD, FRONT BLADE PARALLEL TO SHORT SIDE.	PLAYGROUND	12x10	NA	1
H	METALAIRE MODEL 900 ROUND, STEP DOWN ALUMINUM SURFACE MOUNT SUPPLY DIFFUSER.	OFFICE	8	LAY-IN	1,5,6
REMARKS	<ol style="list-style-type: none"> 1) STANDARD OFF WHITE FINISH. 2) PROVIDE MODEL RSD NECK DAMPER. 3) FOUR WAY THROW UNLESS NOTED OTHERWISE ON DWG M-1. 4) PROVIDE MODEL RSD NECK DAMPER ON UNITS IN RESTROOMS. 5) PROVIDE MODEL TR SQUARE TO ROUND NECK TRANSITION. 6) PROVIDE 900D NECK DAMPER, ADJUSTABLE THRU DIFFUSER FACE. 				

AIR DOOR SCHEDULE

MARK	CFM	VELOCITY	HEATING CAP	HP	AREA SERVED	MODEL	MANUFACTURER	REMARKS
FF#1	1752	3500	NA	3/4	REAR DOOR	STR-1-42A	BERNER	1,3
FF#2	646	2113	5000 W	1/5	DRIVE THRU	MAX-1-24E	BERNER	2,3
REMARKS	<ol style="list-style-type: none"> 1) PROVIDE PLUNGER TYPE MICRO-SWITCH. 2) PROVIDE LINE VOLTAGE HEAT/AUTO WALL MOUNT THERMOSTAT. MODIFY AIR DOOR WIRING TO ALLOW FAN AND HEAT CONTROL FROM THERMOSTAT. 3) CHICK-FIL-A HAS A NATIONAL ACCOUNT WITH BERNER AIR DOORS. THE MECHANICAL CONTRACTOR SHALL PURCHASE THE FANS DIRECTLY FROM BERNER. CONTACT BERNER AT 800-245-4455, FOR PRICING AND AVAILABILITY. 							

CHICK-FIL-A S97-136
March 1, 2001 Edition
2136 North Monroe Street
Tallahassee, Florida

BE
BENNER ENGINEERING, LLC
216 VALLEY ROAD
NORCROSS, GEORGIA
30071
PHONE: 770/729-1422
FAX: 770/729-0490
E-MAIL: rbennor@bennerspring.com

REVISIONS
#1 06/08/01 BUILDING DEPT COMMENTS

JOB NUMBER
01030

DATE
04/02/01

MECHANICAL
DETAILS &
SCHEDULES

M3
Tallahassee, FL

MECHANICAL SPECIFICATIONS

PART I GENERAL

- FURNISH ALL MATERIALS, LABOR, TOOLS, TRANSPORTATION AND INCIDENTALS TO COMPLETE IN EVERY DETAIL, AND LEAVE IN WORKING ORDER ALL ITEMS CALLED FOR HEREIN OR SHOWN ON THE ACCOMPANYING DRAWINGS.
- IT IS THE RESPONSIBILITY OF CONTRACTOR TO READ ALL SPECIFICATIONS AND CONSULT ALL DRAWINGS WHICH MAY AFFECT THE INSTALLATION AND COORDINATION OF HIS WORK WITH OTHER TRADES. CONTRACTOR SHALL COORDINATE AND MAKE MINOR ADJUSTMENTS IN LOCATION OF EQUIPMENT AND MATERIALS AS NECESSARY TO SECURE COORDINATION.
- LAYOUT SHOWN IN DRAWINGS IS BASED ON A PARTICULAR MAKE OF EQUIPMENT. CONTRACTOR SHALL PROVIDE SIX SUBMITTAL SETS OF SHOP DRAWINGS TO ENGINEER FOR APPROVAL PRIOR TO STARTING WORK. IF ANOTHER MAKE OF EQUIPMENT IS DESIRED, THESE SUBMITTALS SHALL ALSO SHOW ALL REQUIRED MODIFICATIONS AND CHANGES, INCLUDING THOSE INVOLVING OTHER TRADES, AND COST THEREOF SHALL BE INCLUDED IN HIS BID. CONTRACTOR MUST RECEIVE APPROVED SUBMITTAL COPY, SIGNED BY ENGINEER BEFORE PROCEEDING WITH ANY MODIFICATIONS. WORK INSTALLED USING UNAPPROVED SUBSTITUTIONS SHALL BE REPLACED AT NO ADDITIONAL COST TO THE OWNER.
- CONTRACTOR SHALL VISIT THE SITE AND FULLY INFORM HIMSELF CONCERNING ALL CONDITIONS AFFECTING SCOPE OF WORK. FAILURE TO DO SO SHALL NOT RELIEVE CONTRACTOR OF ANY RESPONSIBILITY IN THE PERFORMANCE OF HIS WORK. ALL WORKMANSHIP SHALL BE OF THE HIGHEST QUALITY IN ACCORDANCE WITH THE BEST PRACTICES OF THE TRADE BY CRAFTSMEN SKILLED IN THIS PARTICULAR WORK. CONTRACTOR SHALL FILE ALL DRAWINGS, PAY ALL FEES AND OBTAIN ALL PERMITS AND CERTIFICATES OF INSPECTION RELATIVE TO THIS WORK.
- COMPLETED INSTALLATION SHALL CONFORM TO ALL APPLICABLE FEDERAL, STATE AND LOCAL CODES AND ORDINANCES, INCLUDING BUT NOT LIMITED TO THE LATEST APPROVED EDITIONS OF NFPA-96, NFPA-90A, NFPA-54, SMACNA, ASHRAE 90.1 AND ASHRAE 62-89.
- SYSTEM LAYOUT IS SCHEMATIC AND EXACT LOCATIONS SHALL BE DETERMINED BY STRUCTURAL CONDITIONS, COORDINATION WITH OTHER TRADES, COORDINATION WITH FINISHES AND OTHER CONDITIONS. STRUCTURAL SUPPORTS SHALL NOT BE CUT OR ALTERED TO ASSURE FIT OF HVAC SYSTEM. TEN FOOT CLEARANCE SHALL BE MAINTAINED BETWEEN OUTSIDE AIR INTAKES AND EXHAUST FANS AND PLUMBING VENT TERMINALS.
- CONTRACTOR SHALL BE RESPONSIBLE FOR ALL DEFECTS, REPAIRS AND REPLACEMENTS IN MATERIALS AND WORKMANSHIP FOR A PERIOD OF ONE (1) YEAR AFTER FINAL PAYMENT IS APPROVED. CONTRACTOR SHALL HONOR FACTORY WARRANTIES ON ALL EQUIPMENT PROVIDED AS PART OF THIS SYSTEM.
- UPON COMPLETION OF PROJECT, ALL SYSTEM EQUIPMENT AND MATERIALS SHALL BE IN NEW, CLEAN CONDITION WITH ALL DAMAGE RESTORED TO CONDITION ACCEPTABLE TO THE OWNERS REPRESENTATIVE. ALL EQUIPMENT COMPONENTS AND DUCTWORK SHALL BE INSPECTED AND THOROUGHLY CLEANED, READY FOR USE. AT COMPLETION OF JOB, ALL MISCELLANEOUS TOOLS, SCAFFOLDING, SURPLUS MATERIALS, RUBBISH AND DEBRIS SHALL BE REMOVED BY CONTRACTOR.
- IF HVAC EQUIPMENT IS USED FOR TEMPORARY HEATING, ETC., THE CONTRACTOR SHALL ASSUME THE RESPONSIBILITY FOR CLEANING COILS, ETC. FINAL PERMANENT CONNECTIONS OF SERVICES TO UNITS SHALL BE COMPLETE PRIOR TO ANY START-UP OF EQUIPMENT. PROVIDE NEW FILTERS AT WORK COMPLETION.
- CONTRACTOR SHALL SUBMIT THREE (3) SETS OF INSTRUCTION BOOKS, INCLUDING INSTALLATION, OPERATION AND MAINTENANCE INSTRUCTIONS, PAMPHLETS OR BROCHURES AND ALL EQUIPMENT WARRANTIES OBTAINED FROM EACH MANUFACTURER OF EQUIPMENT TO OWNER'S REPRESENTATIVE.
- DRAWINGS ARE DIAGRAMMATIC AND SHALL NOT BE SCALED FOR EXACT SIZES OR LOCATIONS. THEY ARE NOT INTENDED TO DISCLOSE ABSOLUTE OR UNCONDITIONAL KNOWLEDGE OF ACTUAL FIELD CONDITIONS.

PART II PRODUCTS

1. HEATING AND COOLING EQUIPMENT

- FURNISH AND INSTALL ROOFTOP SINGLE PACKAGE COMBINATION ELECTRIC COOLING AND NATURAL GAS FIRED HEATING UNITS BY LENNOX AS SHOWN ON DRAWINGS. EQUIPMENT SHALL BE ARI CERTIFIED AND A.G.A. AND U.L. LISTED.
- UNIT SHALL BE FACTORY ASSEMBLED, TESTED AND HAVE COMPLETE REFRIGERANT R-22 CHARGE, READY TO OPERATE. ALL TUBING JOINTS SHALL BE BRAZED. COILS SHALL BE MINIMUM OF 3-ROWS DEEP.
- INDOOR FAN SHALL BE STATICALLY AND DYNAMICALLY BALANCED, DOUBLE INLET, FORWARD CURVED BELT DRIVEN BLOWER CAPABLE OF DELIVERING DESIGN CFM. FAN SHALL BE QUIET IN OPERATION AND INTERNALLY VIBRATION ISOLATED.
- FILTERS SHALL BE THROW AWAY TYPE, FARR 30/30 2" OR EQUAL. A CLEAN SET OF REPLACEMENT FILTERS SHALL BE PROVIDED AND INSTALLED BY CONTRACTOR AFTER SUCCESSFUL START-UP OF EQUIPMENT AND AGAIN PRIOR TO OPENING.
- ACCESSORIES SHALL INCLUDE LOW AND HIGH PRESSURE SAFETIES, CRANK CASE HEATER, OVERCURRENT AND OVERTEMPERATURE SAFETY, COMPRESSOR VIBRATION ISOLATORS, FILTER DRIERS, REFRIGERANT

SERVICE VALVES, COIL HAIL GUARDS (FL, TX, OK ONLY), CONVENIENCE OUTLETS FACTORY INSTALLED ON SCHEDULED UNITS, UNIT MOUNTED NON-FUSED DISCONNECTS, LOW AMBIENT OPERATION DOWN TO 30 DEGREES F AND EVAPORATOR FREEZE STAT.

- COMPRESSORS SHALL BE FULLY HERMETIC SCROLL TYPE WITH INTERNAL VIBRATION ISOLATORS. COMPRESSORS SHALL BE PROVIDED WITH A MINIMUM FIVE (5) YEAR FULL WARRANTY.
 - UNIT SHALL BE DOWN DISCHARGE AS INDICATED ON THE DRAWINGS.
 - UNITS SHALL HAVE MOTORIZED TWO POSITION OUTSIDE AIR INTAKE DAMPERS CAPABLE OF ADMITTING UP TO 100% OUTSIDE AIR.
 - THE UNIT HEAT EXCHANGERS SHALL BE STEEL WITH ALUMINIZED STEEL COATING. HEATING CONTROLS SHALL CONSIST OF REDUNDANT GAS VALVES, INTERMITTENT PILOT WITH ELECTRONIC SPARK OR HOT PLATE IGNITION SYSTEM, COMBUSTION/EXHAUST FAN PROTECTED BY CENTRIFUGAL SWITCHES, HEAT LIMIT SWITCHES, TIME-DELAY RELAY, FLAME, AND PILOT SENSORS. ALL UNITS SHALL BE CAPABLE OF TWO STAGES OF HEAT. HEAT EXCHANGES SHALL HAVE A TEN (10) YEAR WARRANTY. BURNERS SHALL BE ALUMINIZED IN-SHOT TYPE. THE DRAFT MOTOR SHALL BE MONITORED BY THE CONTROL SYSTEM.
 - CHICK-FIL-A MAINTAINS A NATIONAL ACCOUNT FOR EQUIPMENT WITH LENNOX CORPORATION. PRICING FOR THE EQUIPMENT HAS BEEN ESTABLISHED IN ADVANCE. CONTACT LENNOX NATIONAL ACCOUNTS AT 972-497-6785 FOR PRICING, ORDERING AND AVAILABILITY.
- GENERAL EXHAUST AND KITCHEN HOOD FANS
 - FANS SHALL BE JENN MODELS, UP BLAST OR DOWN BLAST, CENTRIFUGAL OR PROPELLER, AS INDICATED ON DRAWINGS AND SHALL BE LOCATED WHERE SHOWN ON DRAWINGS. ALL FANS SHALL BE U.L. LISTED FOR INTENDED USE AND SHALL BEAR THE A.M.C.A. SEAL. MANUFACTURERS OTHER THAN THE JENN MODELS SPECIFIED ARE NOT ACCEPTABLE.
 - ROOF CURBS
 - EQUIPMENT MANUFACTURER SHALL PROVIDE ALL ROOF CURBS FOR ROOF MOUNTED EQUIPMENT.
 - ROOF CURBS FOR ALL EQUIPMENT SHALL BE INSTALLED IN ACCORDANCE WITH THE "NATIONAL ROOFING CONTRACTORS ASSOCIATION" GUIDELINES, AND THE ROOFING SUPPLIER'S DETAILS AND GUIDELINES FOR THE SPECIFIC ROOFING MATERIALS USED.
 - CURB CONSTRUCTION AND HEIGHT FOR THE HOOD FANS SHALL CONFORM TO THE REQUIREMENTS OF NFPA 96.
 - THE RESTROOM EXHAUST FAN CURB SHALL BE 1'-0" HIGH MINIMUM.
 - ALL CURBS SHALL BE HAVE PERIMETER INSULATION PROVIDED AND INSTALLED BY THE ROOFING INSTALLER.
 - THE ROOFTOP EQUIPMENT CURBS SHALL HAVE A 2" THICK ACOUSTICAL INSULATION BLANKET APPLIED BETWEEN THE ROOF AND EQUIPMENT BY THE MECHANICAL CONTRACTOR.
 - DUCTWORK, INSULATION & INSTALLATION (SEE DWG M2 FOR GREASE DUCT)
 - ACCEPTABLE MANUFACTURERS OF INSULATION ARE MANVILLE, OWENS CORNING OR KNAUF.
 - ALL DUCTWORK, EXCEPT GREASE DUCT, SHALL BE SHEET METAL. SMACNA #1 W.C. PRESSURE CLASS STANDARDS AND RECOMMENDATIONS SHALL BE FOLLOWED WITH RESPECT TO MATERIALS, CONSTRUCTION, INSTALLATION AND SUPPORT OF ALL DUCTWORK. MINIMUM GAUGE ACCEPTABLE SHALL BE 24 GAUGE. ALL JOINTS SHALL BE SEALED WITH APPROVED DUCT SEALANT APPROVED FOR INTENDED USE. STANDARD DUCT TAPE IS NOT ACCEPTABLE. DUCT DIMENSIONS SHOWN ARE INSIDE CLEAR DIMENSIONS.
 - ALL DUCT WRAP SHALL BE MINIMUM 2" THICK, 3/4 PCF AND 5.6 R-VALUE INSTALLED WITH EITHER A VAPOR BARRIER WITH MAXIMUM PERMEANCE 0.05 OR A MINIMUM 2 MIL ALUMINUM REINFORCED FOIL/KRAFT FACING. ALL DUCT LINER SHALL BE MINIMUM 1-1/2" THICK, 1-1/2 PCF AND 6.0 R-VALUE.
 - SUPPLY AIR DUCTWORK SERVING THE PLAYGROUND SHALL BE EITHER EXTERNALLY INSULATED WITH 2" THICK FIBERGLASS BATT DUCT WRAP INSULATION WITH VAPOR BARRIER OR SHALL BE LINED WITH 1-1/2" THICK DUCT LINER. PLAYGROUND UNIT RECTANGULAR RETURN AIR DUCTWORK SHALL BE LINED WITH 1-1/2" THICK DUCT LINER.
 - RESTROOM RECTANGULAR EXHAUST AIR DUCTWORK SHALL BE LINED WITH 1-1/2" THICK FIBERGLASS DUCT LINER.
 - SUPPLY AND RETURN AIR DUCTWORK SERVING THE KITCHEN SERVING AND DINING AREAS SHALL BE EXTERNALLY INSULATED WITH 2" THICK FIBERGLASS BATT DUCT WRAP INSULATION WITH VAPOR BARRIER.
 - TRUNK DUCTS SHALL BE ISOLATED FROM UNIT VIBRATION WITH THE USE OF NFPA AND U.L. APPROVED FLEXIBLE CONNECTORS IN BOTH SUPPLY AND RETURN.
 - ALL ROUND DUCT SHALL BE SIZED AS SHOWN ON DRAWINGS. INSULATED FLEXIBLE DUCT MAY BE UTILIZED FOR CONNECTION TO GRILLES AND REGISTERS ONLY IN MAXIMUM LENGTHS OF 4'-0", NO EXCEPTIONS. CONSTRUCTION OF FLEXIBLE SHALL INCLUDE SPIRAL METAL CORE WITH #1 FIBERGLASS INSULATION WITH VAPOR BARRIER. ALL COMPONENTS SHALL HAVE APPROPRIATE U.L. APPROVAL.
 - SINGLE THICKNESS TURNING VANES SHALL BE INSTALLED AT 90 DEGREE TURNS IN LOW PRESSURE MAIN SUPPLY DUCTS WHERE ANY ONE DIMENSION IS GREATER THAN 12".
 - RADIUSED ELBOWS MAY BE SUBSTITUTED FOR 90 DEGREE ELBOWS AT THE DISCRETION OF THE CONTRACTOR. CENTERLINE RADIUS EQUAL TO 3W/2 PER FIGURE NO. 2-2 IN SMACNA HVAC DUCT CONSTRUCTION STANDARDS.
 - AIR DEVICES
 - AIR DEVICES SHALL BE BY METALAIR, NO SUBSTITUTIONS ALLOWED. COORDINATE FRAME TYPE WITH REFLECTED CEILING PLAN PRIOR TO ORDERING. ALL AIR DEVICES SHALL HAVE UNIFORM FACE DIMENSIONS UNLESS OTHER WISE NOTED. FURNISH AND INSTALL ACCESS DOORS IN GYPSUM CEILINGS AND WALLS FOR DAMPER ACCESS. PAINT ACCESS DOOR TO MATCH CEILING FINISH.
 - MANUAL VOLUME BALANCING DAMPERS SHALL HAVE WING NUTS EXTERNALLY LOCATED AT BOTH ENDS OF DAMPER SHAFT.

6. PAINTING

- ALL EQUIPMENT LOCATED OUTDOORS SHALL HAVE ANY SCRATCHES TOUCHED UP WITH PAINT OF THE SAME TYPE AND COLOR AS ORIGINAL.

7. CONTROLS

- SYSTEMS SHALL BE COMPLETE WITH CONNECTIONS TO CFA-500 TEMPERATURE CONTROL PANEL AS MANUFACTURED BY SUNCOAST ENVIRONMENTAL CONTROLS (S.E.C.) (PH: 877-544-6679). THE PANEL IS PROVIDED AND INSTALLED BY ELECTRICAL.
- INSTALL A SMOKE DETECTOR IN THE SUPPLY AND RETURN AIR DUCT OF EACH AIR CONDITIONING UNIT HANDLING 2000 CFM OR MORE TO STOP THE INDOOR FAN AND CLOSE THE OUTSIDE AIR DAMPER IN THE EVENT OF EXCESSIVE TEMPERATURE OR SMOKE. RETURN SMOKE DETECTOR SHALL BE LOCATED PRIOR TO ANY EXHAUST FROM THE BUILDING OR MIXING WITH FRESH AIR MAKE-UP. UPON DETECTION, THE SYSTEM SHALL NOT RESTART UNTIL THE DEVICE IS MANUALLY RESET. DEVICES SHALL BE LOCATED WHERE THEY CAN BE EASILY ACCESSED AND WHERE CLEAR OF FILTERS. PROVIDE ACCESS PANELS WHERE REQUIRED.
- CHICK-FIL-A HAS A NATIONAL ACCOUNT WITH SUNCOAST ENVIRONMENTAL CONTROLS FOR THE DETECTORS AND TEST/RESET STATIONS. THE SMOKE DETECTORS AND TEST/RESET STATIONS WILL BE PURCHASED AND PROVIDED BY THE ELECTRICAL CONTRACTOR AS A PART OF THE SWITCHGEAR PACKAGE. THE SMOKE DETECTORS AND REMOTE TEST/RESET STATIONS SHALL BE INSTALLED AND WIRED BY THE MECHANICAL CONTRACTOR. INSTALLATION BY MECHANICAL SHALL INCLUDE MOUNTING OF THE DEVICES AND ALL WIRING FROM EACH DEVICE TO BOTH THE RTU AND THE REMOTE TEST/RESET STATION. THE SMOKE DETECTOR SHALL BE POWERED FROM THE RTU CONTROL TRANSFORMER. ELECTRICAL WILL PROVIDE A JUNCTION BOX IN THE WALL WITH 1/2" CONDUIT STUBBED UP ABOVE THE CEILING FOR EACH REMOTE TEST STATION AS SHOWN ON THE ELECTRICAL PLANS. SMOKE DETECTORS SHALL BE AIR PRODUCTS AND CONTROLS RW SERIES IONIZATION TYPE 24V, MODEL RW-024-N. PROVIDE S.E.C. REMOTE TEST/RESET STATION MODEL AP-1 WITH POWER LED, ALARM LED, 90db HORN AND TEST/RESET BUTTON.
- IF REQUIRED BY LOCAL CODE, INSTALL A FIRESTAT IN THE RETURN AIR DUCT OF EACH PIECE OF AIR CONDITIONING EQUIPMENT HANDLING 2000 CFM OR MORE TO STOP THE INDOOR FAN AND CLOSE THE OUTSIDE AIR DAMPER WHEN HEAT WITHIN THE DUCT IS IN EXCESS OF 135 DEGREES FAHRENHEIT. FIRESTAT SHALL BE EQUIVALENT TO HONEYWELL MODEL #L4028E HIGH LIMIT CONTROLLER. FIRESTATS SHALL BE PROVIDED AND MOUNTED BY THE MECHANICAL CONTRACTOR. INSTALLATION BY MECHANICAL SHALL INCLUDE MOUNTING OF THE DEVICE AND ALL WIRING FROM THE DEVICE TO THE RTU.
- THE RESTROOM FAN SHALL BE INTERLOCKED TO THE LIGHTS SERVING THE MEN AND WOMEN'S RESTROOMS. THE HOOD FANS SHALL BE CONTROLLED VIA SWITCHES IN THE KITCHEN. WIRING, RELAYS AND SWITCHES FOR CONTROL OF ALL FANS ARE BY ELECTRICAL CONTRACTOR.
- THE ROOFTOP UNIT THERMOSTATS ARE INTEGRATED INTO THE TEMPERATURE CONTROL PANEL AND ARE BY S.E.C. THE REMOTE TEMPERATURE SENSORS ARE PROVIDED BY S.E.C. AND ARE INSTALLED AND WIRED TO THE PANEL BY THE MECHANICAL CONTRACTOR. WIRING FROM THE ROOFTOP UNIT CONTROLS SECTION TO THE TEMPERATURE CONTROL PANEL SHALL BE BY THE MECHANICAL CONTRACTOR.
- MECHANICAL CONTRACTOR SHALL INSTALL CONTROL WIRING IN 1/2" CONDUIT WHERE REQUIRED BY CODE. WHERE NOT REQUIRED TO BE IN CONDUIT, ALL WIRING SHALL BE RUN PARALLEL TO STRUCTURAL MEMBERS OR PERPENDICULAR WITH NO DIAGONAL ROUTING. ALL WIRING SHALL BE SECURED TO THE FRAMING TO PREVENT SAGGING IN RUNS. WIRING TO ROOFTOP UNITS SHALL BE ROUTED THROUGH THE FACTORY THRU-BASE FITTING IN THE UNIT BASE. ALL WIRING ABOVE THE ROOF SHALL BE INSTALLED IN EXTERIOR GRADE CONDUIT. ALL CONTROL WIRING AND CONTROL WIRING CONDUIT SHALL BE FURNISHED AND INSTALLED BY THE MECHANICAL CONTRACTOR. WIRING SHALL BE INSTALLED IN ACCORDANCE WITH LATEST EDITION OF NEC.

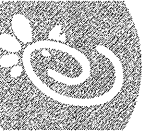
8. SEQUENCE OF OPERATION:

- WHEN STORE IS OPEN, THE EXHAUST FANS AND ROOFTOP UNITS SHALL OPERATE THRU CONTROL OF THE SWITCHES AND SENSORS SHOWN ON THE MECHANICAL AND ELECTRICAL PLANS. THE ROOFTOP UNIT INDOOR FANS SHALL RUN CONTINUOUSLY AND THE OUTSIDE AIR DAMPERS SHALL REMAIN OPEN.
- WHEN STORE IS CLOSED, THE EXHAUST FANS SHALL BE SWITCHED OFF AND THE THERMOSTATS SHALL BEGIN NIGHT SET-BACK MODE. OUTSIDE AIR DAMPERS AT THE ROOFTOP UNITS SHALL REMAIN CLOSED AT ALL AT ALL TIMES DURING NIGHT SET-BACK MODE.
- HOOD EXHAUST FANS SHALL NOT BE CAPABLE OF OPERATION UNLESS SEC PANEL HAS BEEN PUT INTO "STORE OPEN" MODE.
- ACTUATION OF ANSUL SYSTEM SHALL STOP ALL ROOFTOP UNITS, CLOSE THE O.A. DAMPERS AND MAINTAIN OPERATION OF THE GREASE HOOD EXHAUST FANS.
- RESTROOM EXHAUST FAN SHALL ENERGIZE UPON OPERATION OF LIGHTS IN RESTROOMS.

PART III EXECUTION

- FURNISH AND INSTALL SYSTEM IN ACCORDANCE WITH REFERENCED STANDARDS, APPLICABLE CODES, MANUFACTURER'S RECOMMENDATIONS AND AS INDICATED ON DRAWINGS.
- OWNER SHALL TEST AND BALANCE MECHANICAL SYSTEM IN ACCORDANCE WITH AABC STANDARDS TO ASSURE CONFORMANCE WITH DESIGN. G.C. WILL MAKE MECHANICAL CONTRACTOR AVAILABLE DURING TEST AND BALANCE TO ASSIST TESTING AGENCY AND TO MAKE CORRECTIONS IMMEDIATELY NECESSARY. CONTACTOR SHALL CORRECT ITEMS ON WRITTEN TEST AND BALANCE REPORT.
- CONTRACTOR SHALL INSTRUCT THE OWNER'S REPRESENTATIVE IN ALL MATTERS PERTAINING TO THE PROPER MAINTENANCE OF EQUIPMENT FURNISHED UNDER THIS CONTRACT THROUGH DEMONSTRATION AND EXPLANATION OF OPERATING & MAINTENANCE MANUALS.
- CONTRACTOR SHALL PROVIDE A "SAMPLE MAINTENANCE PROPOSAL" TO THE OWNER'S REPRESENTATIVE IN ALL MATTERS PERTAINING TO THE PROPER MAINTENANCE OF EQUIPMENT FURNISHED UNDER THIS CONTRACT.

CHICK-FIL-A 997-136
March 1, 2001 Edition
2136 North Monroe Street
Tallahassee, Florida



BENNER ENGINEERING, LLC
216 VALLEY ROAD
NORCROSS, GEORGIA 30071
PHONE: 770728-1422
FAX: 770728-0490
E-MAIL: rbenner@mindspring.com



REVISIONS

#1 06/08/01 BUILDING DEPT
COMMENTS

JOB NUMBER

01030

DATE

04/02/01

MECHANICAL SPECIFICATIONS

M4

Tallahassee, FL