

Report By:

National TAB
1329 E. KEMPER ROAD
SUITE 4210
CINCINNATI, OH 45246



Report: TAB Report
Function: Test, Adjust, & Balance
Date: 10/28/2025
Completed By: National TAB

PROJECT
Brass Tap Pub (Anaheim, CA)

8295 E. MONTE VISTA RD

ANAHEIM, CA

Client

KMS Resource Group Inc.
8502 E CHAPMAN AVE
SUITE 274
ORANGE, CA 92869

National TAB

Project: Brass Tap Pub (Anaheim, CA)

Table Of Contents

Section	Page #
Issue Data	3
AHU/RTU	6
FAN - Exhaust	12
FAN - Supply	15
Kitchen Hood Type I	17
GRD	19

Issue List

- GRD Inccorect
- RTU-2 LOW AIR FLOW

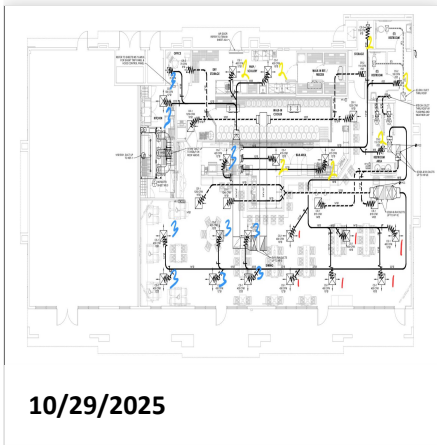


Brass Tap Pub (Anaheim, CA)

Project Issue Information

Issue Name : GRD Inccorect
Description : In the GRD layout the diffusers are not assigned to the correct RTU units. See below for correct units and diffusers.
Created By : National TAB **Assigned To :** National TAB - Scott Springer
Status : Open
Priority : InfoOnly **Asset Tag :**
Originated Date : 10/29/2025 - David Nicolas Sanchez - National TAB

Project Issue File Details





Brass Tap Pub (Anaheim, CA)

Project Issue Information

Issue Name : RTU-2 LOW AIR FLOW
Description : The RTU-2 is running at its highest settings the amps are at 6.7/7A and we are unable to speed the unit up any further. The fan sunction and return air pressures are high, there no dampers installed on return air therefore no restrictions. There are no leaks around the base of the unit or on the duct work.

Created By : National TAB **Assigned To :** National TAB - Scott Springer

Status : Open

Priority : High **Asset Tag :**

Originated Date : 10/28/2025 - David Nicolas Sanchez - National TAB

Project Issue File Details



10/29/2025



10/29/2025



10/29/2025

National TAB

Project: Brass Tap Pub (Anaheim, CA)
System/Unit: AHU/RTU



Asset: HP3

AREA:

Unit Data		
	Design	Actual
MFG	NA	RUUD
Serial Num	-	F182401170
Model Num	NA	RGEDZT090ACG15BAA
Configuration	-	VERTICAL
Num OA Filters 1	-	2
OA Filter Size 1	-	20x21
Num Final Filter 1	-	4
Final Filter Size 1	-	20x20x2

Motor Data		
	Design	Actual
Motor MFG	-	NL
Frame	-	NL
Horsepower	-	NL
Motor Rpm	-	3
Phase	-	3
Rated Voltage	-	208
Rated Amperage	-	9.1
Service Factor	-	NL

Test Data		
	Design	Actual
SF CFM	3000	2925
SF RPM (Initial)	-	718
SF RPM	-	718
RA CFM	2640	2554
OA CFM	360	371
RL Voltage	-	214/214/213
RL Amperage	-	4.8/4.5/4.2
VFD Max SetPt	-	53HZ
VFD Min SetPt	-	53HZ
SF Motor Freq(HZ)	-	53HZ
SF System SetPt	-	3 TURNS OPEN
OA Damper Position	-	3.00V
Brake Horse Power	-	NA

Performance Data		
	Design	Actual
Fan Suction SP	-	-0.78"
Fan Discharge SP	-	0.36"
Total ESP	0.80	0.96"
Fan Total SP	-	1.14"

Completed By: Ethan Van Orden on 10/28/2025

Unit Data - PHOTO LOG



10/28/2025

National TAB

Project: Brass Tap Pub (Anaheim, CA)

AHU/RTU



Diffuser Supply (GRD)

HP3/

Asset							
Asset Name	Location	Type	Size	DESIGN CFM	CFM(1)	FINAL CFM	% to design
SGRD1	DINNING	CS-1	12	420	338	393	93.6
SGRD2	DINNING	CS-1	12	415	264	361	87.0
SGRD3	DINNING	CS-1	12	415	262	356	85.8
SGRD4	DINNING	CS-1	8	110	262	288	261.8
SGRD5	DINNING	CS-1	8	160	161	360	225.0
SGRD6	BAR	CS-1	8	110	80	292	265.5
SGRD7	BAR	CS-1	10	400	189	516	129.0
SGRD8	KITCHEN	CS-1	10	400	188	263	65.8
SGRD9	OFFICE	CS-1	6	70	76	96	137.1
Total				2500	1820	2925	117%

Diffuser Ret/Exh (GRD)

HP3/

Asset									
Asset Name	Location	Type	Size	DESIGN CFM	AK	CFM(1)	CFM(2)	FINAL CFM	% to design
EGRD1	STORAGE	CR-2	8		1	1044	831	831	-
EGRD2	BAR	CR-1	16		1	842	1068	1068	-
Total				0		1886	1899	1899	0%

National TAB

Project: Brass Tap Pub (Anaheim, CA)
System/Unit: AHU/RTU



Asset: HP-E1

AREA:

Unit Data		
	Design	Actual
MFG	NA	YORK
Serial Num	-	N1L6039716
Model Num	NA	XP090C00D2A1BAA1A1
Configuration	-	vERTICAL
Num OA Filters 1	-	1
OA Filter Size 1	-	26.25x 25
Num OA Filters 2	-	
OA Filter Size 2	-	
Num PreFilter 1	-	
PreFilter Size 1	-	
Num PreFilter 2	-	
PreFilter Size 2	-	
Num Final Filter 1	-	4
Final Filter Size 1	-	20x24x2
Num Final Filter 2	-	
Final Filter Size 2	-	my

Test Data		
	Design	Actual
SF CFM	3000	2826
SF RPM (Initial)	-	NA
SF RPM	-	NA
RA CFM	2495	2308
OA CFM	505	518
RL Voltage	-	210/211/211
RL Amperage	-	5.8/5.6/5.9
VFD Max SetPt	-	NA
VFD Min SetPt	-	NA
SF Motor Freq(HZ)	-	NA
SF System SetPt	-	2 TURNS OPEN
OA Damper Position	-	15%
Brake Horse Power	-	NA

Performance Data		
	Design	Actual
Fan Suction SP	-	-0.84"
Fan Discharge SP	-	0.44"
Total ESP	0.80	0.99"
Fan Total SP	-	1.83"
Pre-Filter P.D.	-	
Final Filters P.D.	-	
Cooling Coil P.D.	-	

Motor Data		
	Design	Actual
Motor MFG	-	MARATHON ELECTRIC
Frame	-	56HZ
Horsepower	-	3
Motor Rpm	-	1725
Phase	-	3
Rated Voltage	-	208
Rated Amperage	-	10.3
Service Factor	-	1.15

Completed By: Ethan Van Orden on 10/28/2025

Unit Data - PHOTO LOG



10/28/2025

National TAB

Project: Brass Tap Pub (Anaheim, CA)

AHU/RTU



Diffuser Supply (GRD)

HP-E1/

Asset							
Asset Name	Location	Type	Size	DESIGN CFM	CFM(1)	FINAL CFM	% to design
SGRD1	DINING	CS-1	12	430	433	414	96.3
SGRD2	DINING	CS-1	12	430	243	423	98.4
SGRD3	DINING	CS-1	12	425	264	550	129.4
SGRD4	DINING	CS-1	12	430	239	376	87.4
SGRD5	DINING	CS-1	12	425	188	512	120.5
SGRD6	DINING	CS-1	12	430	179	551	128.1
Total				2570	1546	2826	109.96%

Diffuser Ret/Exh (GRD)

HP-E1/

Asset									
Asset Name	Location	Type	Size	DESIGN CFM	AK	CFM(1)	CFM(2)	FINAL CFM	% to design
EGRD1	DINING	CR-1	16	1245	1	1297	1297	1297	104.2
EGRD2	DINING	CR-1	16	1250	1	1039	1039	1039	83.1
Total				2495		2336	2336	2336	93.63%

National TAB

Project: Brass Tap Pub (Anaheim, CA)
System/Unit: AHU/RTU



Asset: HP-E2

AREA:

Unit Data		
	Design	Actual
MFG	NA	YORK
Serial Num	-	W1L6087850
Model Num	NA	PHE4B6031A
Configuration	-	VERTICAL
Num Final Filter 1	-	2
Final Filter Size 1	-	16x20x2

Motor Data		
	Design	Actual
Motor MFG	-	NA
Frame	-	NL
Horsepower	-	1
Motor Rpm	-	NL
Phase	-	1
Rated Voltage	-	208
Rated Amperage	-	7
Service Factor	-	NL

Test Data		
	Design	Actual
SF CFM	2000	1385
SF RPM (Initial)	-	DD
SF RPM	-	DD
RA CFM	1630	1638
OA CFM	370	0
RL Voltage	-	212
RL Amperage	-	6.78
VFD Max SetPt	-	N/A
VFD Min SetPt	-	N/A
SF Motor Freq(HZ)	-	N/A
SF System SetPt	-	[5]
OA Damper Position	-	N/A

Performance Data		
	Design	Actual
Fan Suction SP	-	-1.10"
Fan Discharge SP	-	0.23"
Total ESP	0.80	0.89"
Fan Total SP	-	1.33"

Completed By: Ethan Van Orden on 10/28/2025

Unit Data - PHOTO LOG



10/28/2025

National TAB

Project: Brass Tap Pub (Anaheim, CA)

AHU/RTU



Diffuser Supply (GRD)

HP-E2/

Asset							
Asset Name	Location	Type	Size	DESIGN CFM	CFM(1)	FINAL CFM	% to design
SGRD1	RESTROOM	CS-1	10	400	184	184	46.0
SGRD2	RESTROOM	CS-1	10	400	161	161	40.3
SGRD3	STORAGE	CS-1	10	400	115	115	28.8
SGRD4	BAR	CS-1	10	400	266	266	66.5
SGRD5	BAR	CS-1	10	400	264	264	66.0
SGRD6	BOH	CS-1	10		200	200	-
SGRD7	BOH	CS-1	10		195	195	-
Total				2000	1385	1385	69.25%

Diffuser Ret/Exh (GRD)

HP-E2/

Asset									
Asset Name	Location	Type	Size	DESIGN CFM	AK	CFM(1)	CFM(2)	FINAL CFM	% to design
EGRD1	DINING	CR-1	14	815	1	815	815	815	100.0
EGRD2	DINING	CR-1	14	815	1	823	823	823	101.0
Total				1630		1638	1638	1638	100.49%

National TAB

Project: Brass Tap Pub (Anaheim, CA)
System/Unit: FAN - Exhaust



Asset: EF1

AREA:

Unit Data		
	Design	Actual
MFG	NA	REVENT
Model Num	NA	RVS80110
Serial Num	-	NL

Test Data		
	Design	Actual
CFM	100	102
RL Voltage	-	
RL Amperage	-	

Motor Data		
	Design	Actual
Motor MFG	-	REVENT
Horsepower	-	NL
Motor Rpm	-	NL
Phase	-	1
Voltage (rated)	-	120
Amperage (rated)	-	.22

Unit Data - PHOTO LOG



10/28/2025

National TAB

Project: Brass Tap Pub (Anaheim, CA)
System/Unit: FAN - Exhaust



Asset: EF2

AREA:

Unit Data		
	Design	Actual
MFG	NA	REVENT
Model Num	NA	RVS80110
Serial Num	-	NL

Test Data		
	Design	Actual
CFM	100	108
RL Voltage	-	
RL Amperage	-	

Motor Data		
	Design	Actual
Motor MFG	-	REVENT
Horsepower	-	NL
Motor Rpm	-	NL
Phase	-	1
Voltage (rated)	-	120
Amperage (rated)	-	.22

Unit Data - PHOTO LOG



10/28/2025

National TAB

Project: Brass Tap Pub (Anaheim, CA)
System/Unit: FAN - Exhaust



Asset: KEF1

AREA:

Unit Data		
	Design	Actual
MFG	CAPTIVEAIRE	CAPTIVEAIRE
Model Num	DU85HFA	DU85HFA
Serial Num	-	7296220
Type	CRE	CRE

Test Data		
	Design	Actual
CFM	2125	2122
Fan RPM	1473	1380
System SetPt	-	56.2HZ
RL Voltage	208	124
RL Amperage	-	7.5
Suction ESP	-	-0.85"
Discharge ESP	-	ATMS
Total ESP	0.971	0.85"
Brake Horse Power	-	NA

Motor Data		
	Design	Actual
Motor MFG	-	NEMA 48
Frame	-	NL
Horsepower	0.750	0.75
Motor Rpm	-	1800
Phase	1	1
Voltage (rated)	208	115
Amperage (rated)	-	8.9
Service Factor	-	NL

Drive Data	
	Actual
Motor Sheave Size	DD
Motor Bore Size	DD
Motor Sheave SetPt	DD
Fan Sheave Size	DD
Fan Sheave Bore	DD
Belt CL Distance	DD
Num of Belts	DD
Belt Size	DD

Completed By: David Nicolas Sanchez on 10/28/2025

Unit Data - PHOTO LOG



10/28/2025

National TAB

Project: Brass Tap Pub (Anaheim, CA)
System/Unit: FAN - Supply



Asset: MUA1

AREA:

Unit Data		
	Design	Actual
MFG	CAPTIVEAIRE	CAPTIVEAIRE
Model Num	A1-D.250-18Z	A1-15D
Serial Num	-	7296220
Type	-	MAU
Configuration	-	VERTIVAL
Num Filters Size 1	-	3
Filter Size 1	-	20X25X2

Test Data		
	Design	Actual
CFM	1912	1968
SF RPM	-	70%
SF System SetPt	-	70%
RL Voltage	-	NA
RL Amperage	-	NA
Suction ESP	-	NA
Discharge ESP	-	NA
Total ESP	-	NA

Motor Data		
	Design	Actual
Motor MFG	-	NEMA 48
Frame	-	NL
Horsepower	-	1
Motor Rpm	-	NL
Phase	-	1
Voltage (rated)	-	115
Amperage (rated)	-	11.6
Service Factor	-	

Drive Data	
	Actual
Motor Sheave Size	DD
Motor Bore Size	DD
Motor Sheave SetPt	DD
Fan Sheave Size	DD
Fan Sheave Bore	DD
Belt CL Distance	DD
Num of Belts	DD
Belt Size	DD

Completed By: David Nicolas Sanchez on 10/28/2025

Unit Data - PHOTO LOG



10/28/2025

National TAB

Project: Brass Tap Pub (Anaheim, CA)

System/Unit: Kitchen Hood Type I



Asset: HD1

AREA:

Unit Data		
	Design	Actual
MFG	CAPTIVEAIRE	CAPTIVEAIRE
Model Num	5424-ND-2-PSP-F	5424-ND-2
Job / Serial Num	-	7296220
Type	TYPE I	TYPE I
Hood length	102	102
Hood Width	54	54
Supply Plenum Type	-	PSP
Supply Plenum Width	18	18
Supply Plenum Length	114	114

Test Data Exhaust		
	Design	Actual
Filter Type	CAPTRATE SOLO	CAPTRATE
Filter Size 1	20X16	20X16
Filter Qty 1	6	6
Filter AK factor size 1	-	2.08
Filter Total AK Area	-	12.48
Filter1 FPM	-	174
Filter2 FPM	-	169
Filter3 FPM	-	188
Filter4 FPM	-	170
Filter5 FPM	-	159
Filter6 FPM	-	164
Filter Ave FPM(corr)	-	170
CFM	2125	2122

Cooking Equipment	
	Actual
Item 1	GRIDDLE
Item 2	FRYER
Item 3	
Item 4	
Item 5	

Test Data Supply		
	Design	Actual
Total Area	-	14.25
Kv factor (Vel)	-	0.88
Num of Readings	-	8
Reading1 FPM	-	164
Reading2 FPM	-	162
Reading3 FPM	-	137
Reading4 FPM	-	164
Reading5 FPM	-	166
Reading6 FPM	-	154
Reading7 FPM	-	146
Reading8 FPM	-	167
Ave FPM(corr)	-	157
CFM	1912	1968

Completed By: David Nicolas Sanchez on 10/27/2025

Unit Data - PHOTO LOG



10/28/2025

- REVISIONS
- △ CLARIFICATIONS - 09/27/24
 - △ PLAN CHECK #1 - 11/18/24
 - △ CLIENT REVISIONS - 01/07/25
 - △ PLAN CHECK #2 - 03/06/25
 - △ PLAN CHECK #3 - 04/01/25
 - △ OWNER CHANGE - 07/17/25

THIS DOCUMENT, AND THE IDEAS AND DESIGNS INCORPORATED HEREIN, AS AN INSTRUMENT OF PROFESSIONAL SERVICE, IS THE PROPERTY OF "api" AND IS NOT TO BE USED, IN WHOLE OR IN PART, FOR ANY OTHER PROJECT WITHOUT WRITTEN AUTHORIZATION.



ARCHITECTURE PLUS INC.
4335-B NORTH STAR WAY
MODESTO, CA 95356

ph. 209.577.4661
fx. 209.577.0213

www.apiarc.com

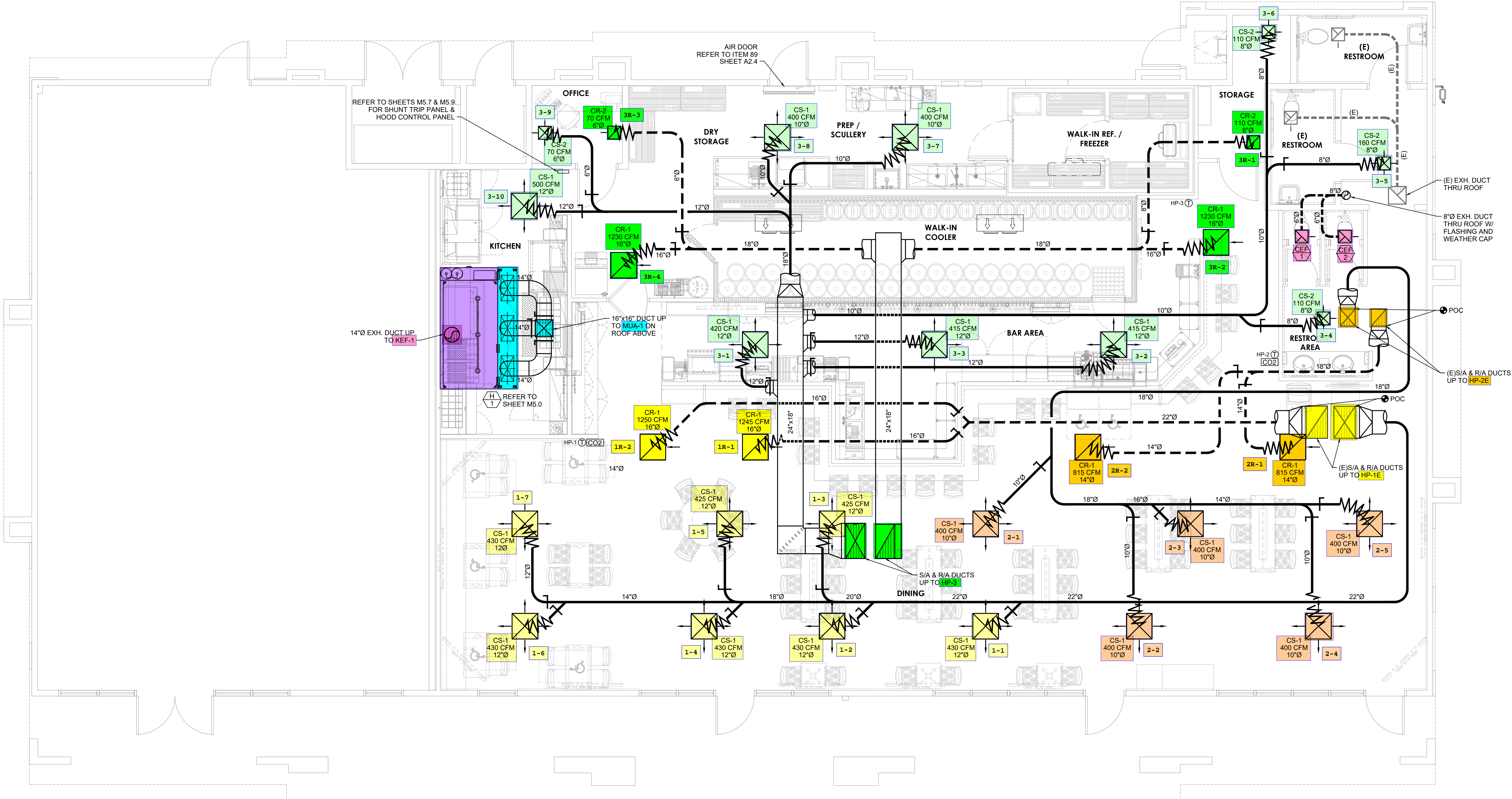
JOSEPH L. SMITH
RODNEY C. ALONZO
BRIAN D. ROSENBERGER
ARCHITECTS

BRASS TAP PUB
8295 E. MONTE VISTA ROAD
ANAHEIM

MECHANICAL - FLOOR PLAN

DATE:	MAY 2024
JOB NO.:	24036
DRAWN:	
CHECKED:	
SHEET:	

M2.0



1
M2.0
MECHANICAL - FLOOR PLAN
SCALE: 1/4" = 1'-0"
NORTH



nexus engineering
Consulting Mechanical Engineers
1400 Lone Palm Ave, Suite A
Modesto, CA 95351
Tel: 209.572.7399 Fax: 209.236.1579
www.nexusengineering.net
HVAC, Plumbing/Piping, Fire Sprinklers
Process/Plant Engineering, Refrigeration

J:\2024 Jobs\24036 - Brass Tap Anaheim\24036 - Mechanical.dwg, 7/18/2025 11:46:01 AM, d.wilson

CA

ANAHEIM