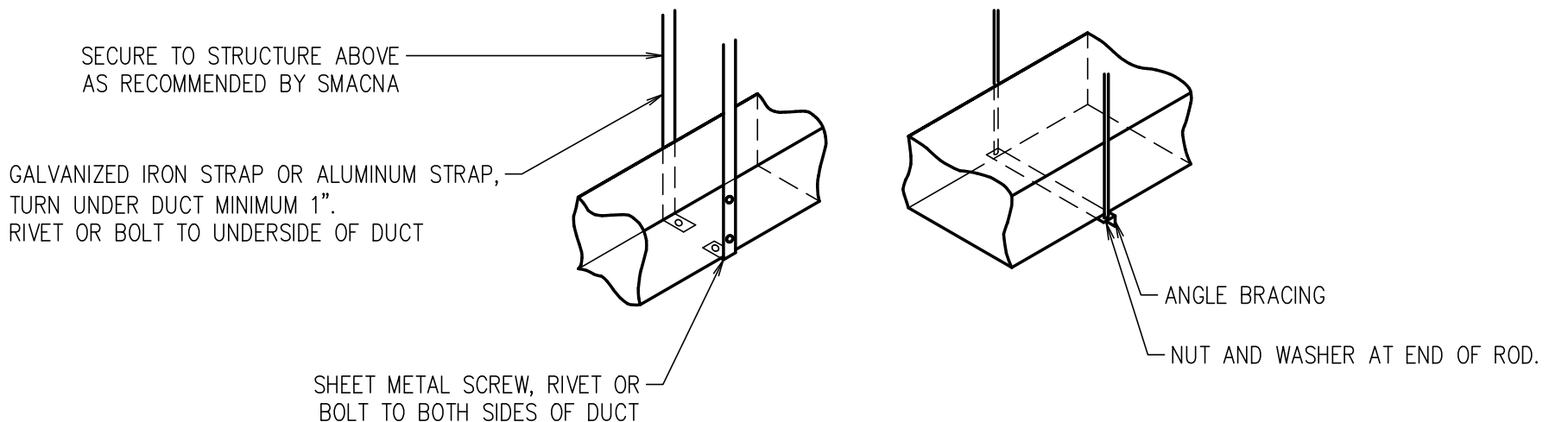


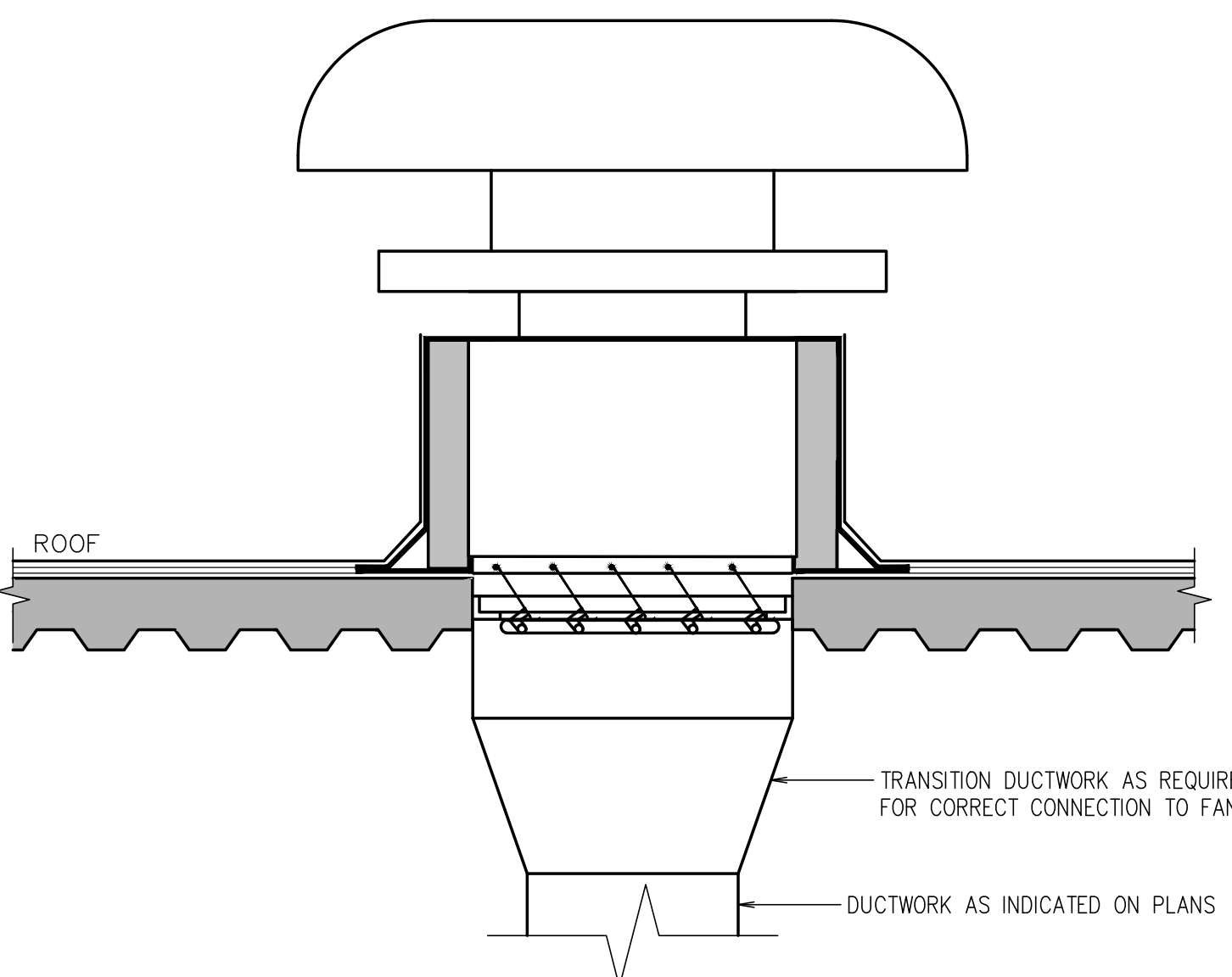
DIFFUSER CONNECTION DETAIL

RECTANGULAR DUCT HANGER SCHEDULE (MINIMUM SIZES)

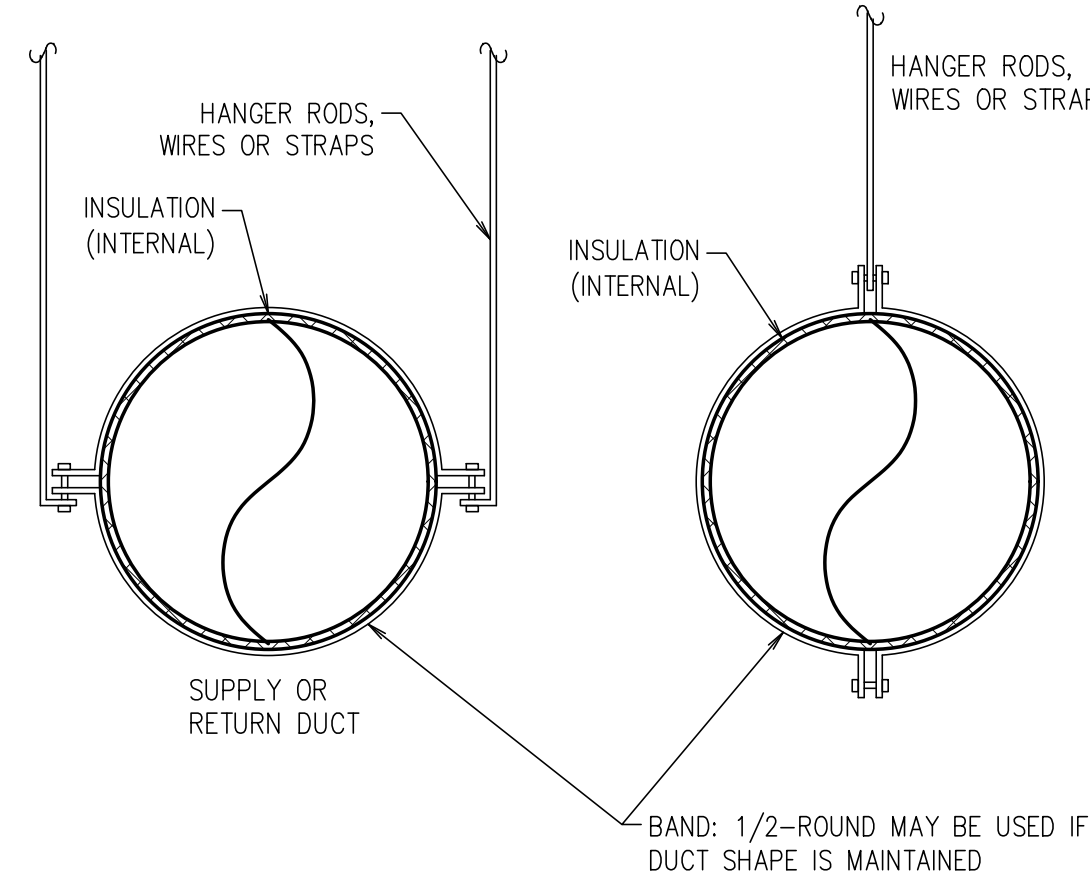
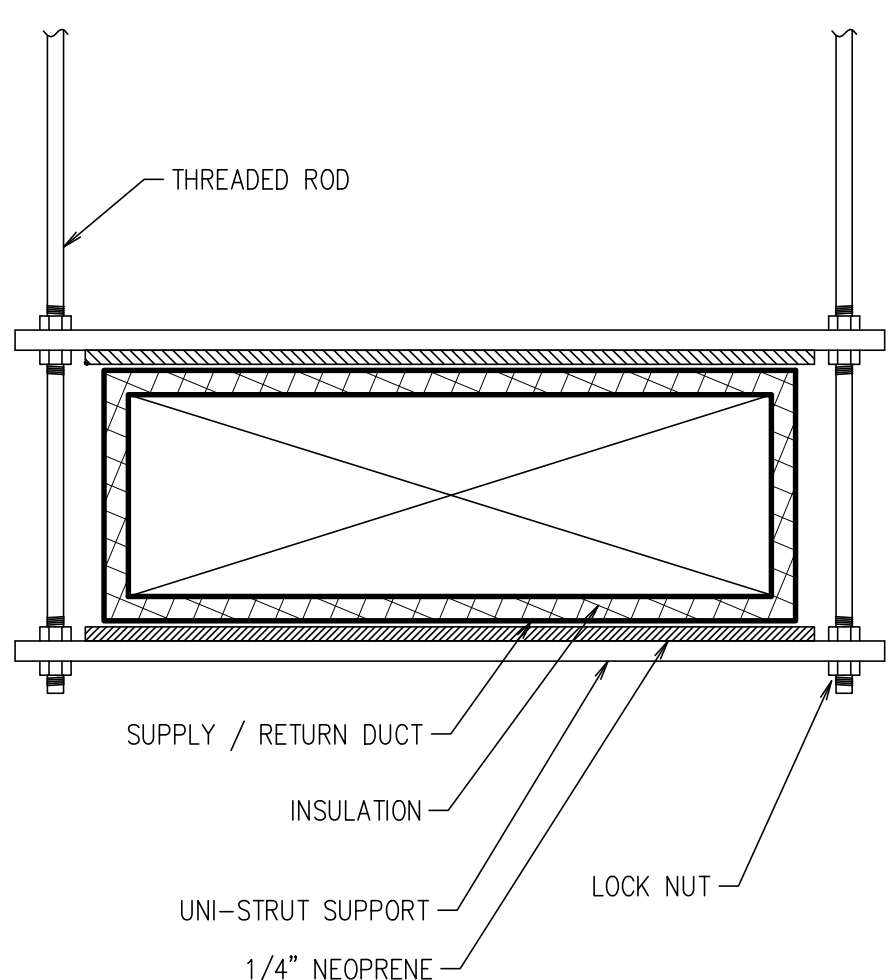
HALF DUCT PERIMETER RANGE	PAIR AT 10' SPACING		PAIR AT 8' SPACING		PAIR AT 5' SPACING		PAIR AT 4' SPACING	
	STRAP	WIRE/ROD	STRAP	WIRE/ROD	STRAP	WIRE/ROD	STRAP	WIRE/ROD
P/2 < 30"	1"x 22 GA.	10 GA. (0.135")	1"x 22 GA.	10 GA. (0.135")	1"x 22 GA.	12 GA. (0.106")	1"x 22 GA.	12 GA. (0.106")
P/2 < 72"	1"x 18 GA.	3/8"	1"x 20 GA.	1/4"	1"x 22 GA.	1/4"	1"x 22 GA.	1/4"
P/2 < 96"	1"x 16 GA.	3/8"	1"x 18 GA.	3/8"	1"x 20 GA.	3/8"	1"x 22 GA.	1/4"
P/2 < 120"	1-1/2"x 16 GA.	1/2"	1"x 16 GA.	3/8"	1"x 18 GA.	3/8"	1"x 20 GA.	1/4"
P/2 < 168"	1-1/2"x 16 GA.	1/2"	1"x 16 GA.	1/2"	1"x 16 GA.	3/8"	1"x 18 GA.	3/8"
P/2 < 192"	-	1/2"	1-1/2"x 16 GA.	1/2"	1"x 16 GA.	3/8"	1"x 16 GA.	3/8"



DUCT HANGER DETAILS



ROOFTOP MUSHROOM CAP



NOTES:
1. Hangers Must Not Deform Duct Shape. Hang Per Local Seismic Regulations.

DUCT SUPPORT DETAILS

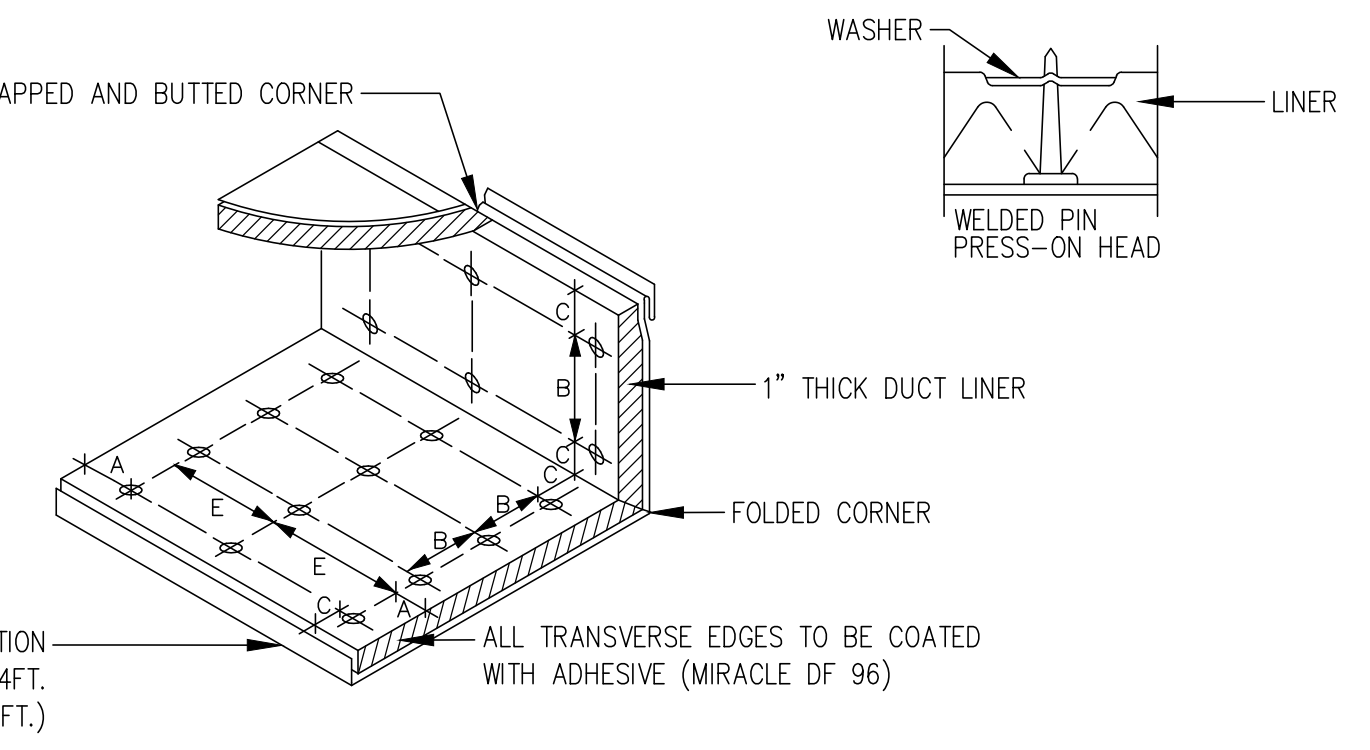
DIFFUSER AND REGISTER SCHEDULE

UNIT ID	MANUFACTURER	MODEL	DESCRIPTION	REMARKS
A	TITUS	TMSA-AA	ALUMINUM, FULL LOUVERED FACE, FULL PANEL FACE, ADJUSTABLE DISCHARGE, AND VOLUME CONTROL OPPOSED BLADE DAMPER, MODEL AG-75-AA.	1,2,3,4,5
C	TITUS	TMR4	ALUMINUM ROUND DIFFUSERS AIRFLOW DISCHARGE PATTERN SHALL BE FIELD ADJUSTABLE FROM HORIZONTAL TO VERTICAL WITH VOLUME CONTROL DAMPER.	1,2,5
R	TITUS	50F	ALUMINUM BORDER RETURN GRILLE - 1/2"x1/2"x1/2" ALUMINUM GRID CORE. VOLUME CONTROL OPPOSED BLADE DAMPERS, MODEL AG-15-AA. OPERABLE FROM FACE.	1,2,4,5

NOTES:
1. Maximum Noise Criterion Rating < 30 DBA.
2. Black Finish, Color To Be Selected By Architect.
3. Diffusers Shall Be 4-Way Blow Unless Otherwise Indicated On Plans.
4. Mounting Frame Type Shall Be Coord. With Ceiling / Wall Construction Type.
5. Neck Size Shall Be As Scheduled.
6. Flexible Ducts Connecting The Diffusers Shall Be Full Size Of Neck Diameter.

Round Neck Size Schedule

UP TO 100 CFM	- 6" DIA
101 TO 225 CFM	- 8" DIA
226 TO 375 CFM	- 10" DIA
376 TO 600 CFM	- 12" DIA
601 TO 900 CFM	- 14" DIA
901 TO 1500 CFM	- 16" DIA



VELOCITY	DIMENSIONS			
	A	B	C	E
0-2500 FPM	3"	12"	4"	18"
2501-6000 FPM	3"	6"	4"	16"

NOTES:
1. Maximum Spacing For Fasteners. Actual Intervals Are Approximate.
2. The Velocity Rated Side Of Liner Must Face The Air Flow.
3. Liner Adhered To The Duct With 90% Minimum Area Coverage Of Adhesive.

DUCT LINER INSTALLATION DETAIL

FAN SCHEDULE

UNIT ID	MANUFACTURER	MODEL NO.	TYPE	DRIVE	CFM	FAN RPM	S.P.		MOTOR HP	VOLTS	PHASE	SERVICE	INTERLOCKED	COMMENTS
							(IN. W.G.)	HP						
TEF3-2	GREENHECK	SP-B110	CEILING	DIRECT	110	940	0.125	Frac	120	1	RESTROOMS	LIGHTING	1-6	

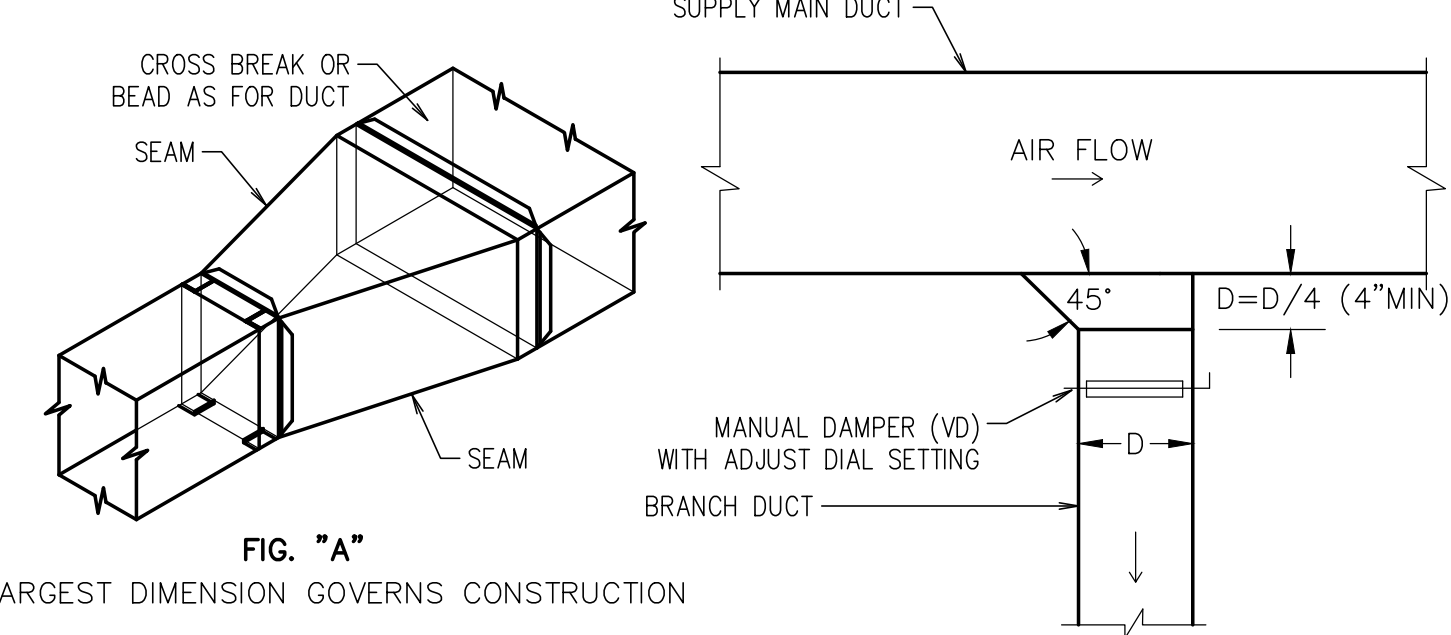
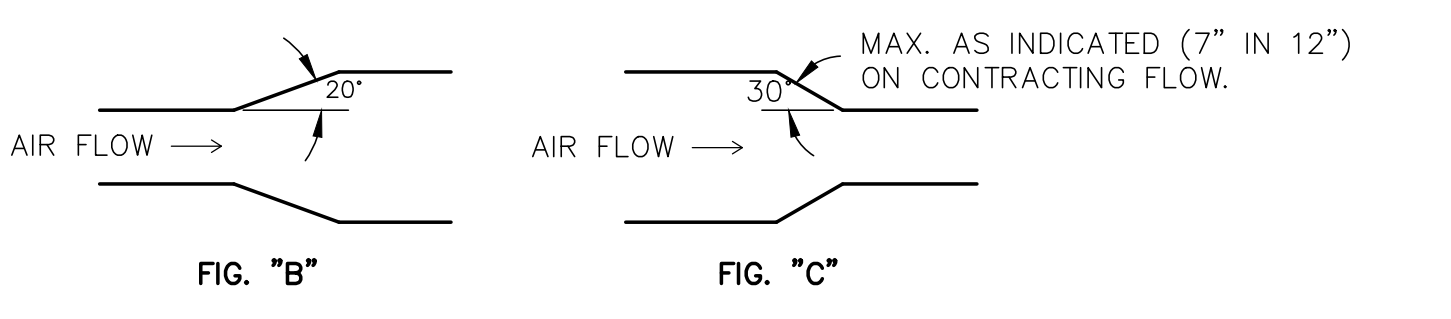
COMMENTS:
1. Provide with Disconnect Switch.
2. Provide with Backdraft Damper.
3. Flexible Duct Connections.
4. Vibration Isolators.
5. Speed Control Switch Mounted To Fan Cabinet For Exact Balancing.
6. Exterior Louver

ROOFTOP UNIT SCHEDULE

UNIT ID	MANUFACTURER	MODEL NO.	NOMINAL TONS	SUPPLY FAN			GAS HEAT SECTION			COOLING COIL			COMPRESSORS				ELECTRICAL				OPERATING WEIGHT (lbs)	NOTES AND REQUIRED ACCESSORIES		
				TOTAL AIR (CFM)	MINIMUM OUTSIDE AIR (CFM)	ESP (W.G.)	INPUT (MBH)	OUTPUT (MBH)	STAGES	TOTAL MBH	SENS. MBH	AMBIENT AIR	EAT db	WB	NO	STAGES	REFRIG	VOLTS	PHASE	MCA			MOCP	EER
RTU-1	CARRIER	48HCEG11	10	4,000	800	0.75	224	180	2	119.8	92.5	95	80	67	2	2	R-410A	208	3	53	60	12	1,448	1-15
RTU-2	CARRIER	48HCED08	7.5	3,000	600	0.75	150	115	2	93.3	72.2	95	80	67	2	2	R-410A	208	3	43	50	12	925	1-15
RTU-3	CARRIER	48HCEA06	5	2,000	400	0.75	115	93	1	60.42	48	95	80	67	1	1	R-410A	208	3	30	45	12.85	815	1-15

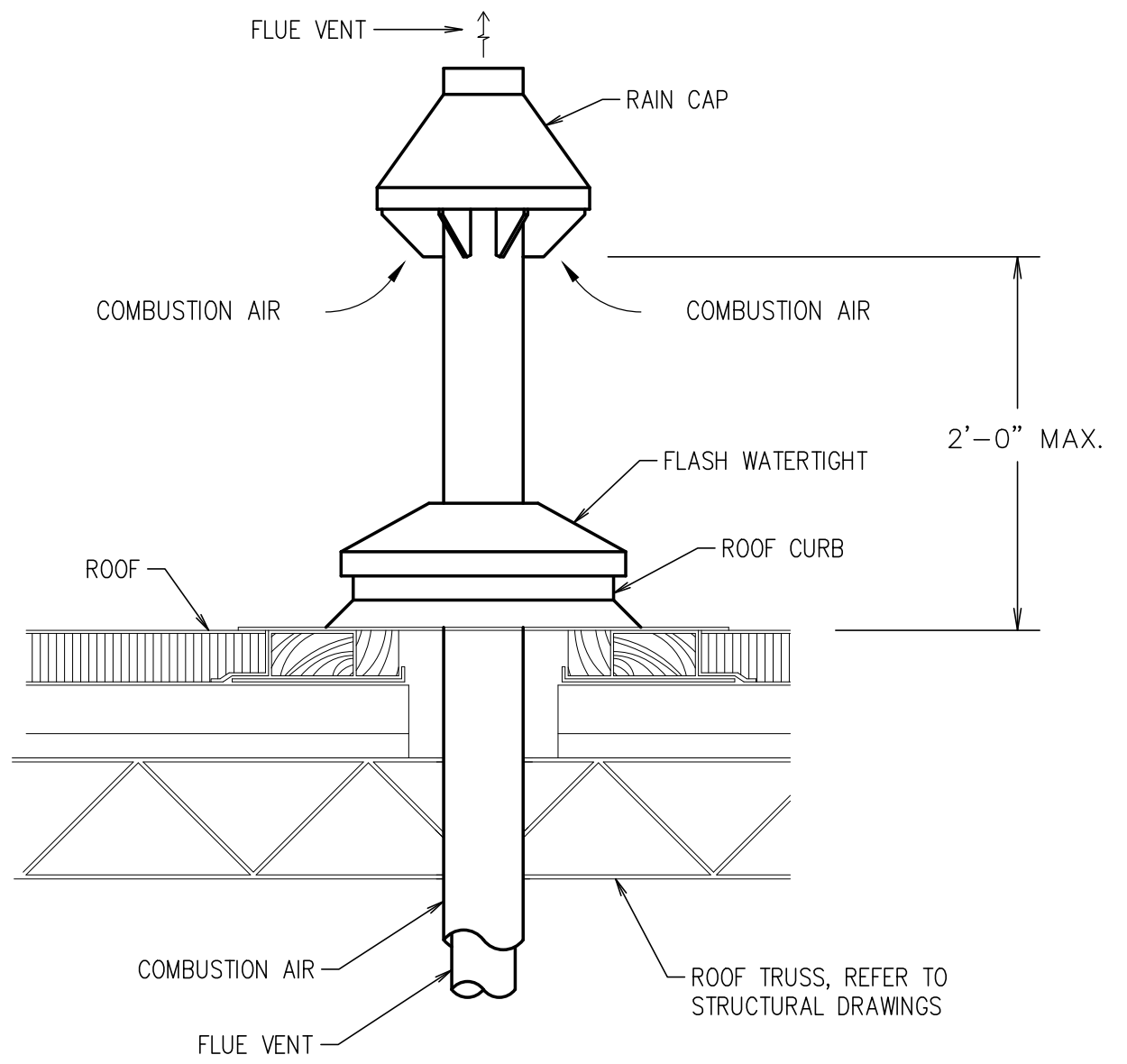
NOTES:
1. Cooling capacity indicated in schedule based on standard conditions db/wb - 80/67 F.
2. Insulated roof curb, 14" (sloped to match pitch of roof, refer to architectural drawings).
3. Cabinet with 3/4" fiberglass insulation and hinged access doors.
4. Condensate drain with 2" deep vented trap discharge to splash block on roof.
5. Weatherproof non-fused, handle type disconnect switch. Verify Voltage
6. Factory installed GFCI receptacle - Unit Powered.
7. Duct Smoke Detector - unit mounted, Return, Supply or Both per Code
8. Programmable thermostat (24 hour, 7-day) with remote sensor capability. Provide remote sensors when indicated.
9. Throwaway 2" filters (MERV 8).
10. Multiple stage gas valve if available with unit.
11. Anti short cycle timer.
12. Factory installed differential enthalpy economizer with power exhaust.
13. Control board capable of handling a DCV system to provide operational control of outside air damper.
14. Hot gas reheat with associated controls and sensors for dehumidification control.
15. Variable Frequency Drive (VFD) with Variable Air Volume (VAV) control.

THE MECHANICAL CONTRACTOR SHALL VERIFY, IN WRITING, THE VOLTAGE OF ALL MECHANICAL EQUIPMENT WITH THE ELECTRICAL CONTRACTOR PRIOR TO SUBMITTING ORDER TO EQUIPMENT VENDOR.



NOTE:
1. Duct Transitions Typical After Each Take-Off(s) Where Change In Duct Size Is Indicated.

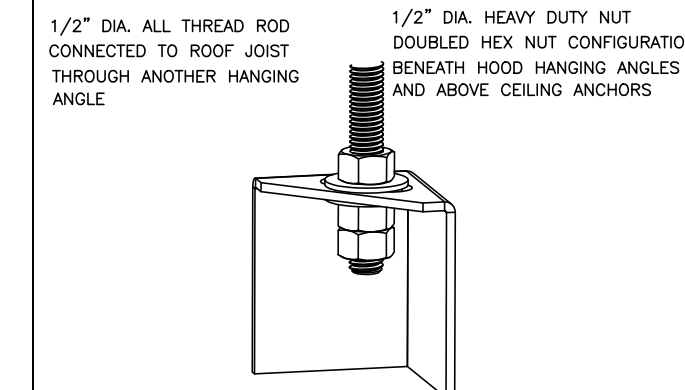
DUCT TRANSITION DETAILS



COMMENTS:
1. TYPICAL ONLY FOR PIPES WITH TEMPERATURES LESS THAN 250F.
2. ROOF PENETRATION SHALL BE WEATHERPROOF.
3. PITCH FLUE PIPING BACK TOWARDS UNIT.
4. ONE (1) FOR EACH UNIT.

WATER HEATER CONCENTRIC VENT DETAIL

ND-2 HANGING ANGLE DETAIL



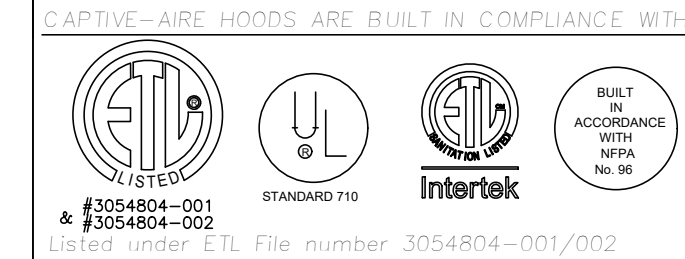
HANGING ANGLE LOCATIONS

HOOD STYLE	DIM FROM REAR	DIM FROM FRONT (24\"/>	
CANOPY ND2	4.166"	2.246"	2.246"
ND2-PSP-F	4.166"	2.246"	2.246"
BACKSHELF BD-2	4.166"	2.246"	-
VHB/VHB-C	36"X36"	42"X42"	48"X48"
FRONT/BACK DIMS BY SIZE	2.246"	2.246"	2.246"

CALCULATIONS UTILIZED

EXHAUST CAPACITY OF HOOD X CFM/INCH (SQS)
 SUPPLY CFM=EXHAUST CFM X PERCENTAGE REQUIRED
 TOTAL DUCT AREA=144 X
 DUCT LENGTH= TOTAL DUCT AREA
 DUCT DEPTH=

BUILDING CODES



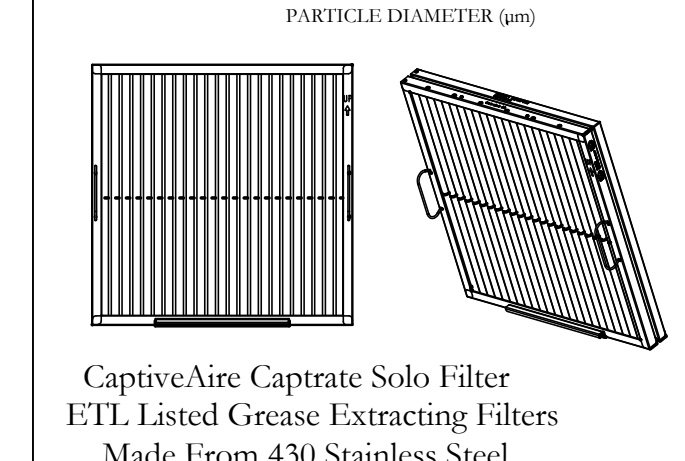
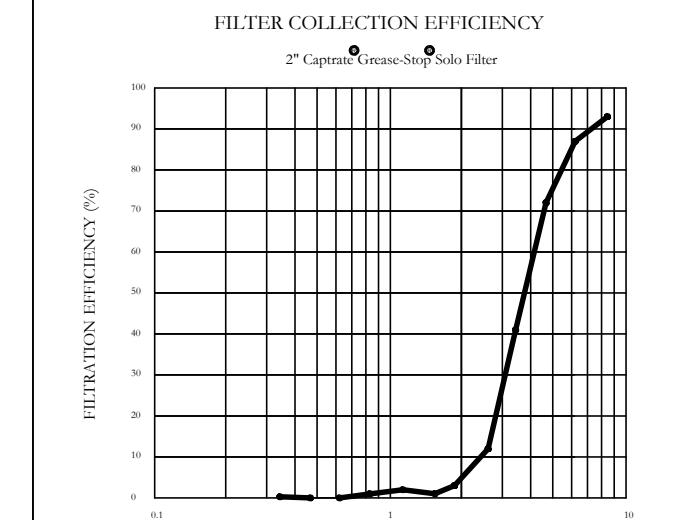
CLEARANCE TO COMBUSTIBLES

MATERIAL	CLEARANCE REDUCTION SYSTEM
NON-COMBUSTIBLE	NONE REQUIRED
LIMITED-COMBUSTIBLE	3" UNSHROTTED STANDOFF
COMBUSTIBLE	1" INSULATED STANDOFF

GENERAL NOTES

- ALL ELECTRICAL "FIELD" CONNECTIONS AND RELATED INTERCONNECTIONS BY ELECTRICAL CONTRACTORS.
- ALL PLUMBING "FIELD" CONNECTIONS AND RELATED INTERCONNECTIONS BY PLUMBING CONTRACTORS.
- HANGING BRACKETS LOCATED AND WELDED AS SHOWN ON PLANS. ALL OTHER HANGER MATERIALS PROVIDED BY INSTALLING CONTRACTORS.
- ALL CONNECTIONS FROM CAPTIVE-AIRE HOODS TO MECHANICAL CONTRACTOR'S PLANS.
- COOKING EQUIPMENT TO SHUTOFF IN EVENT OF FIRE.
- EXHAUST FANS TO TURN ON IN EVENT OF FIRE.
- ALL LIGHTS/FIXTURES SHOWN INSTALLED BY CAPTIVE-AIRE ARE FACTORY PROVIDED. INTERCONNECTIONS BETWEEN HOODS AND TO SWITCHES BY ELECTRICAL CONTRACTORS.
- SEISMIC RESTRAINTS ARE RESPONSIBILITY OF INSTALLING CONTRACTOR.
- INSTALLING CONTRACTORS ASSUME ALL RELATED RESPONSIBILITY FOR VERIFICATION OF DIMENSIONAL DATA CONTAINED ON THESE DOCUMENTS FOR ACCURACY, INTEGRITY, AND ADHERENCE TO ALL CODE REQUIREMENTS IN EFFECT PRIOR TO ANY RELEASE FOR PRODUCTION OF EQUIPMENT SHOWN.
- RESTAURANT SHALL BE POSITIVE WITH RESPECT TO AMBIENT PRESSURE.
- KITCHEN HOODS MUST BE BALANCED WITH KITCHEN.
- KITCHEN SHALL BE NEGATIVE WITH RESPECT TO AMBIENT AREA.
- RESTAURANT SHALL BE POSITIVE WITH RESPECT TO AMBIENT AREA.
- WRITTEN HOOD DIMENSIONS HAVE PRECEDENCE OVER SCALE.
- SIGNED AND "APPROVED" COPIES OF THIS DOCUMENT MUST BE RECEIVED BY THE FACTORY PRIOR TO COMMENCEMENT OF FABRICATION.

FILTER DETAIL



CaptiveAire Captrate Solo Filter
 ETL Listed Grease Extracting Filters
 Made From 430 Stainless Steel

HOOD INFORMATION - JOB#738629

HOOD NO	TAG	MODEL	MANUFACTURER	LENGTH	MAX COOKING TEMP	TYPE	APPLIANCE DUTY	DESIGN CFM/FIT	TOTAL EIM CFM	EXHAUST FLENUM (INCHES)	WIDTH	LENG	HTGHT	DIA	CFM	VEL	SP	MUA CFM	AC CFM	HOOD CONSTRUCTION	HOOD END TO END	BROW	PATENT NUMBERS
1	ITEM 33A	5424	CAPTIVEAIRE	8'0"	450 DEG	I	MEDIUM	200	1600	4"	14"	1600	1407	-0.734"	1280	500	430 SS	WHERE EXPOSED	ALONE	FRONT			AC-PSP (UNITED STATES) - US PATENT 7368380 B2 AC-PSP (CANADA) - CA PATENT 202008 AC-PSP (ISLAND CANADA) - CA PATENT 250330
2	ITEM 33B	ND-2	CAPTIVEAIRE	8'0"	450 DEG	I	MEDIUM	155	775	4"	10"	775	1421	-0.430"	620	339	430 SS	WHERE EXPOSED	ALONE	ALONE			

HOOD NO	TAG	TYPE	QTY	HEIGHT	LENGTH	EFFICIENCY @ 7 MICRONS	QTY	TYPE	WIRE GAUGE	LOCATION	SIZE	TYPE	SIZE	MODEL #	QUANTITY	FIRE HOOD SYSTEM	HANGING PIPING	WEIGHT
1	ITEM 33A	CAPTIVATE SOLO FILTER	5	10"	10"	85% SEE FILTER SPEC	2	RECESSED ROUND	NO	LEFT	12"x6"x24"	TANK FS	4.04	04.0	DCV-2111	1 FAN		1064 LBS
2	ITEM 33B	CAPTIVATE SOLO FILTER	3	10"	10"	85% SEE FILTER SPEC	2	RECESSED ROUND	NO	NO								469 LBS

HOOD OPTIONS

NO	TAG	OPTION
1	ITEM 33A	FIELD WRAPPER 18.00" HIGH FRONT, LEFT, RIGHT RIGHT END STANDOFF (FINISHED) 1" WIDE 50" LONG INSULATED LEFT QUARTER END PANEL 22" TOP WIDTH, 0" BOTTOM WIDTH, 22" HIGH 430 SS RIGHT QUARTER END PANEL 22" TOP WIDTH, 0" BOTTOM WIDTH, 22" HIGH 430 SS INSULATION FOR TOP OF HOOD INSULATION FOR BACK OF HOOD
2	ITEM 33B	FIELD WRAPPER 18.00" HIGH FRONT, LEFT, RIGHT LEFT QUARTER END PANEL 22" TOP WIDTH, 0" BOTTOM WIDTH, 22" HIGH 430 SS RIGHT QUARTER END PANEL 22" TOP WIDTH, 0" BOTTOM WIDTH, 22" HIGH 430 SS INSULATION FOR TOP OF HOOD INSULATION FOR BACK OF HOOD RISER SENSOR INSTALL ON FLENUM

PERFORATED SUPPLY PLenums (S)

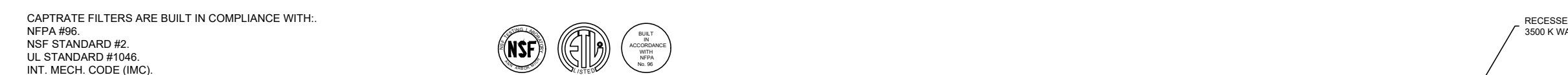
HOOD NO	TAG	POS	LENGTH	WIDTH	HEIGHT	TYPE	WIDTH	LENG	DIA	CFM	SP
1	ITEM 33A	Front	100"	24"	6"	MUA	12"	256	0.084"		
						MUA	12"	256	0.084"		
						MUA	12"	256	0.084"		
						MUA	12"	256	0.084"		
						MUA	12"	256	0.084"		
						AC	8"	100	0.032"		
						AC	8"	100	0.032"		
						AC	8"	100	0.032"		
						AC	8"	100	0.032"		
						MUA	10"	155	0.047"		
						MUA	10"	155	0.047"		
						MUA	10"	155	0.047"		
2	ITEM 33B	Front	60"	22"	6"	MUA	10"	155	0.047"		
						MUA	10"	155	0.047"		
						MUA	10"	155	0.047"		
						MUA	10"	155	0.047"		
						MUA	10"	155	0.047"		
						AC	8"	103	0.034"		
						AC	8"	103	0.034"		
						AC	8"	103	0.034"		
						AC	8"	103	0.034"		
						MUA	10"	155	0.047"		
						MUA	10"	155	0.047"		
						MUA	10"	155	0.047"		

SPECIFICATION: CAPTIVATE GREASE STOP SOLO FILTER

THE CAPTIVATE GREASE STOP SOLO FILTER IS A SINGLE-STAGE FILTER FEATURING A UNIQUE DESIGN IN CONJUNCTION WITH A BOTTLED REAR Baffle DESIGN TO DELIVER EXCEPTIONAL FILTRATION EFFICIENCY.
 FILTER IS STAINLESS STEEL CONSTRUCTION, AND SIZED TO FIT INTO STANDARD 2-INCH DEEP HOOD CHANNELS.
 UNITS SHALL INCLUDE STAINLESS STEEL HANDLES AND A FASTENING DEVICE TO SECURE THE TWO COMPONENTS WHEN ASSEMBLED.
 GREASE EXTRACTION EFFICIENCY PERFORMANCE SHALL REMOVE AT LEAST 75% OF GREASE PARTICLES 15 MICRONS IN SIZE, AND 90% GREASE PARTICLES 10 MICRONS IN SIZE AND LARGER, WITH A CORRESPONDING PRESSURE DROP NOT TO EXCEED 1 INCHES OF WATER GAUGE.
 THE CAPTIVATE GREASE STOP SOLO WAS TESTED TO ASTM STANDARD ASTM F675-05 MANUFACTURER APPROVED FOR USE IN SOLID FUEL APPLICATIONS AS A SPARK ARRESTER.
 EFFICIENCY VS. PARTICLE SIZE TABLE



PLAN VIEW - HOOD #1 (ITEM 33A)



PLAN VIEW - HOOD #2 (ITEM 33B)



SECTION VIEW - MODEL 5424ND-2-ACPS-P HOOD - #1 (ITEM 33A)



SECTION VIEW - MODEL 5424ND-2-ACPS-P HOOD - #2 (ITEM 33B)



CLEARANCE TO COMBUSTIBLES

HOODS #	SURFACE	COLEANCE
1	TOP	0"
	FRONT	0"
	BACK	0"
	RIGHT	0"
2	TOP	0"
	FRONT	0"
	BACK	0"
	RIGHT	18"

* 1\"/>

* HOOD MOUNTED UTILITY CABINETS REQUIRE 30\"/>

CUSTOMER APPROVAL TO MANUFACTURE:

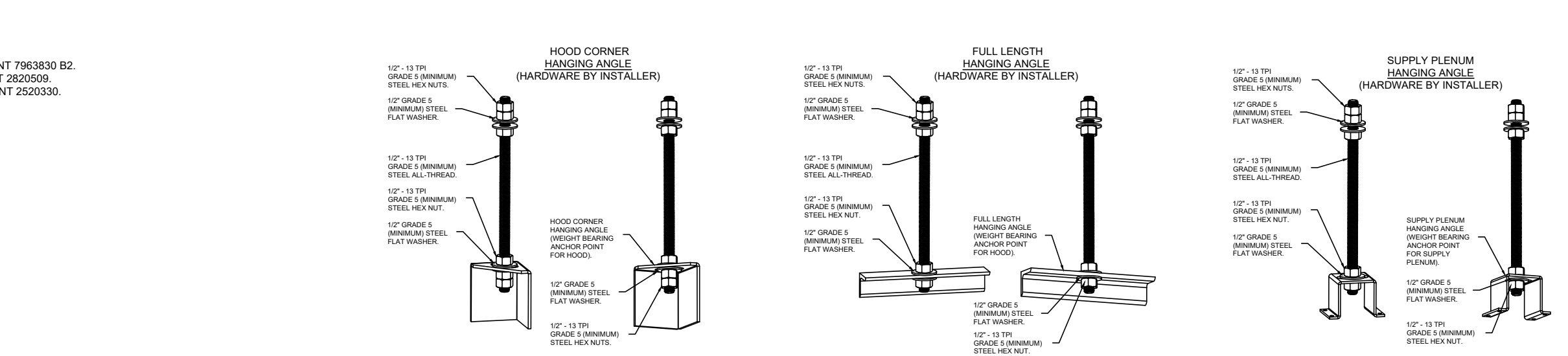
Approved as Noted
 Approved with NO Exception Taken
 Revised and Resubmit
 SIGNATURE _____
 Your Title _____ Date _____

***** NOTE *****

ALL WALLS AND STRUCTURES THAT COME WITHIN 18\"/>

HOOD MANUFACTURER RECOMMENDS NO RETURNS OR AWAY OFFISERS WITHIN 10 FEET OF HOOD IN ALL DIRECTION.

MAKEUP AIR SHALL BE DELIVERED INTO SPACE IN MANNER THAT WILL NOT DISRUPT HOODS ABILITY TO CAPTURE AND CONTAIN.



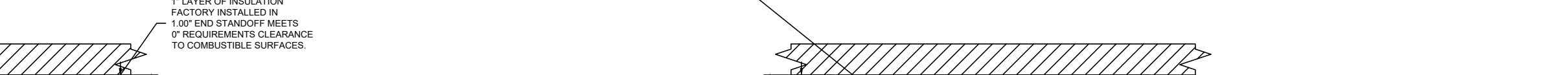
ASSEMBLY INSTRUCTIONS

HANGING ANGLE MUST BE SUPPORTED WITH 1/2\"/>

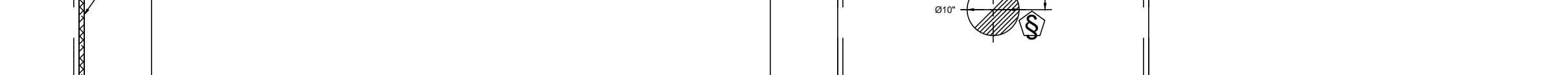
HANGING ANGLE MUST BE SUPPORTED WITH 1/2\"/>

HANGING ANGLE MUST BE SUPPORTED WITH 1/2\"/>

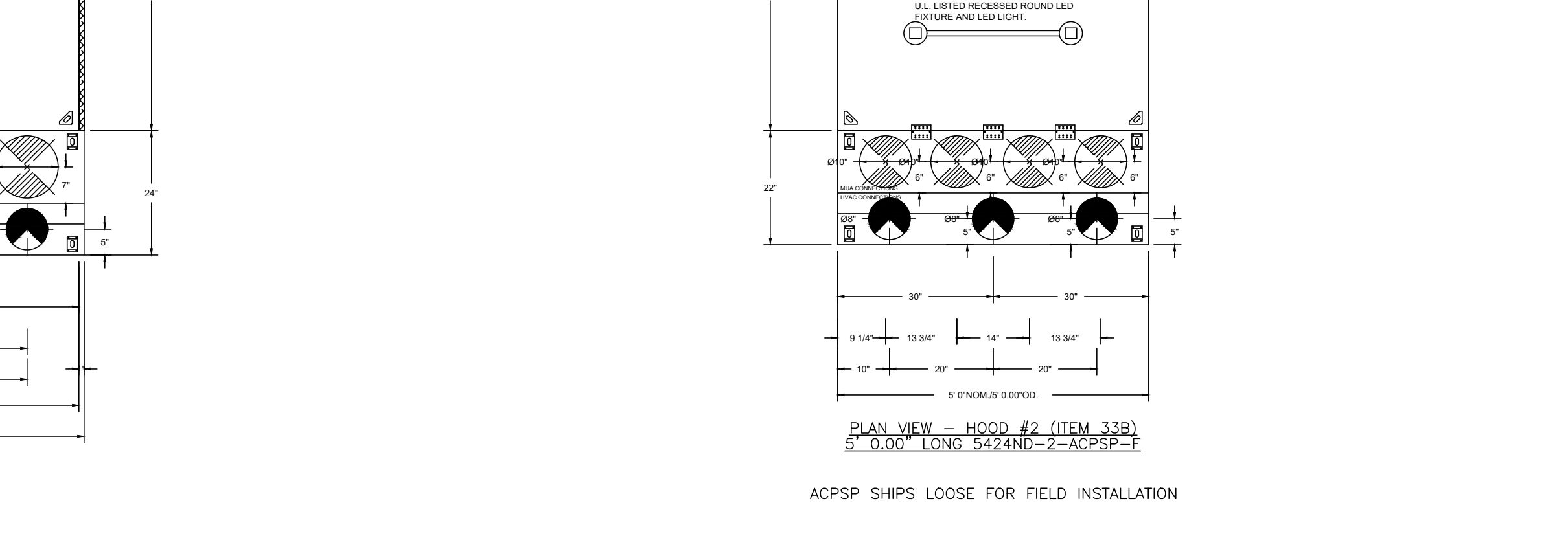
PLAN VIEW - HOOD #1 (ITEM 33A)



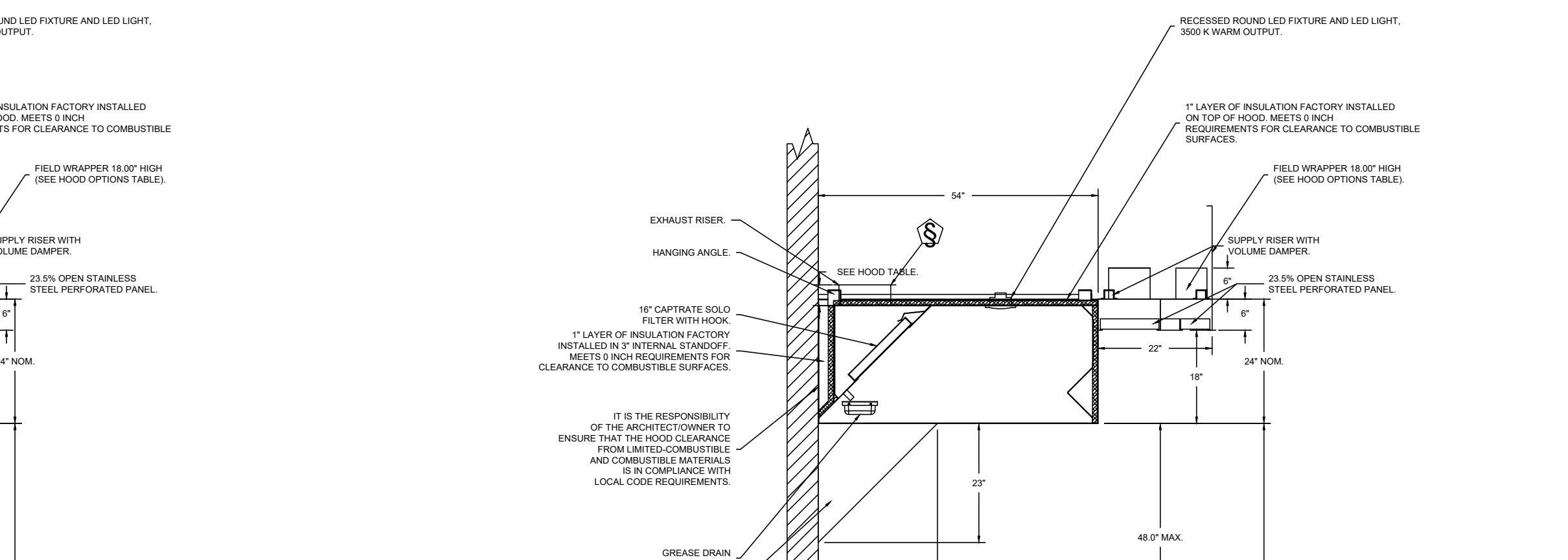
PLAN VIEW - HOOD #2 (ITEM 33B)



SECTION VIEW - MODEL 5424ND-2-ACPS-P HOOD - #1 (ITEM 33A)



SECTION VIEW - MODEL 5424ND-2-ACPS-P HOOD - #2 (ITEM 33B)



CLEARANCE TO COMBUSTIBLES

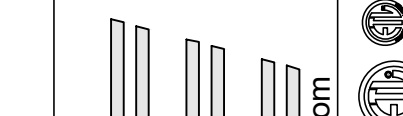
HOODS #	SURFACE	COLEANCE
1	TOP	0"
	FRONT	0"
	BACK	0"
	RIGHT	0"
2	TOP	0"
	FRONT	0"
	BACK	0"
	RIGHT	18"

* 1\"/>

* HOOD MOUNTED UTILITY CABINETS REQUIRE 30\"/>

REVISIONS

NO	DESCRIPTION	DATE



104 W 9th St, Suite 204, Kansas City, MO, 64106 PHONE: (816) 221-8576 FAX: (816) 221-1531 E-MAIL: reg@captivaire.com

www.captiveaire.com

HBT Foodservice

Freddy's - Holmdel, NJ (MUA)

HOLMDEL, NJ, 07733

DATE: 2/7/2025

DWG.#: 7328629

DRAWN BY: michael.co

SCALE: 1/2\"/>

MASTER DRAWING

SHEET NO. 1



THIS DRAWING IS OWNED BY OR LICENSED FOR USE BY FREDDY'S FROZEN CUSTARD & STEAKBURGERS OR ITS AFFILIATED OR RELATED COMPANIES AND MAY NOT BE REPRODUCED, COPIED, EITHER WHOLLY OR IN PART, DISSEMINATED, PUBLISHED, OR TRANSMITTED IN ANY FORM OR BY ANY MEANS, EXCEPT WITH THE PRIOR WRITTEN CONSENT OF ARCHITRAVE GROUP, P.C. COPYRIGHT INFRINGEMENT IS A VIOLATION OF FEDERAL LAW SUBJECT TO CRIMINAL AND CIVIL PENALTIES.

THE CONTRACTOR IS TO VERIFY ALL DIMENSIONS AND CONDITIONS OF THE PROJECT AND TO REPORT ANY DISCREPANCIES TO THE ARCHITRAVE GROUP PRIOR TO COMMENCING WORK. THESE DRAWINGS ARE NOT TO BE USED FOR CONSTRUCTION PURPOSES UNLESS INDICATED BY FREDDY'S FROZEN CUSTARD & STEAKBURGERS AS ISSUED FOR CONSTRUCTION.

FREDDY'S FROZEN CUSTARD
COMMONS AT HOLMDEL - BLOCK 50.35, LOT 1
2136 ROUTE 35 SOUTH - UNIT 200
HOLMDEL, NEW JERSEY

rchitrave GROUP P.C.
 2517 Route 35 - Building E - Suite 101
 Manasquan, New Jersey, 08735-2120-0959
 Phone (732) 261-1874
 JOSE C. SANTOS, RA - NJ A181745

Freddy's - Holmdel, NJ (MUA)
 HOLMDEL, NJ, 07733

DATE: 2/7/2025
 DWG.#: 7328629
 DRAWN BY: michael.co

SCALE: 1/2\"/>
 MASTER DRAWING

SHEET NO. 1

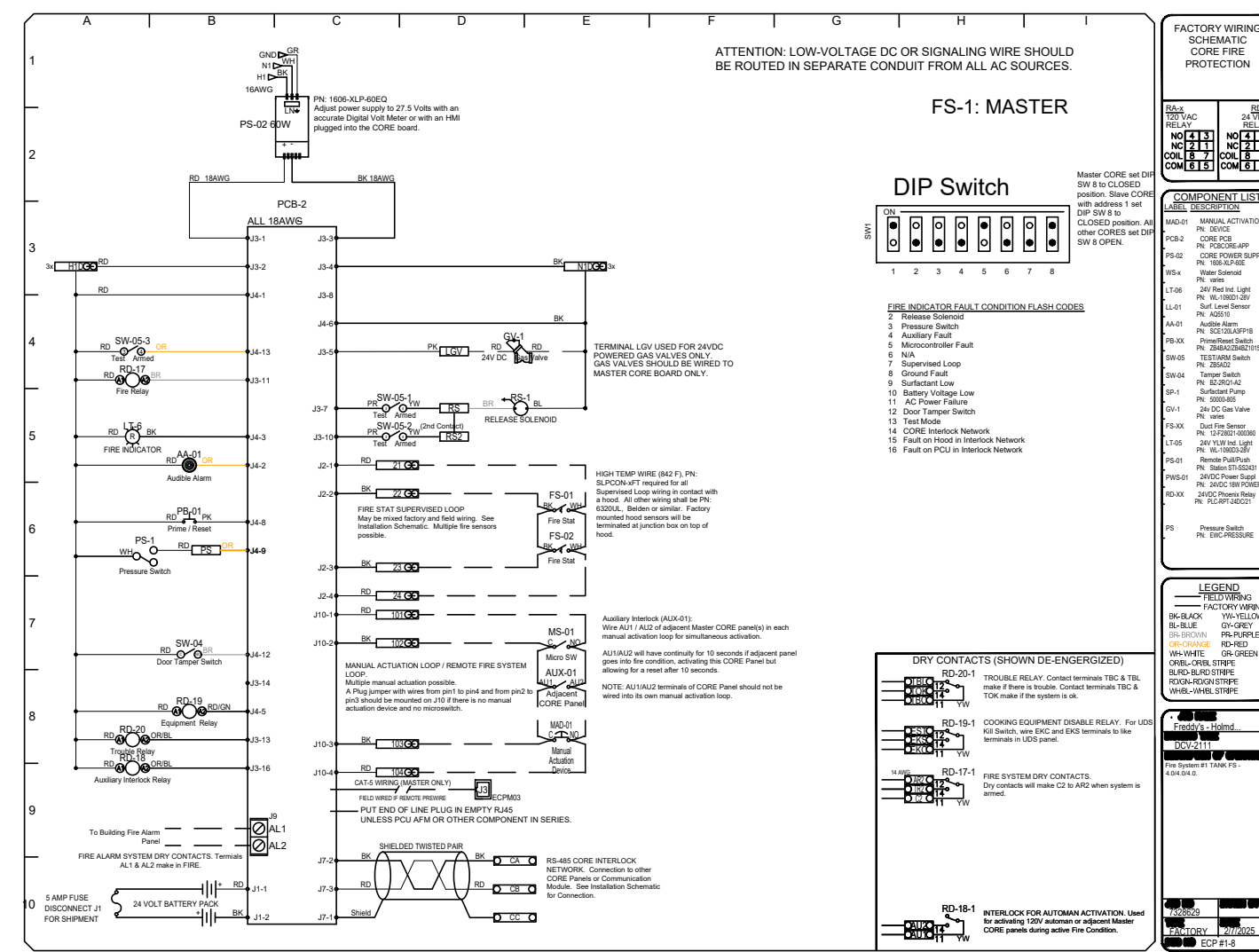
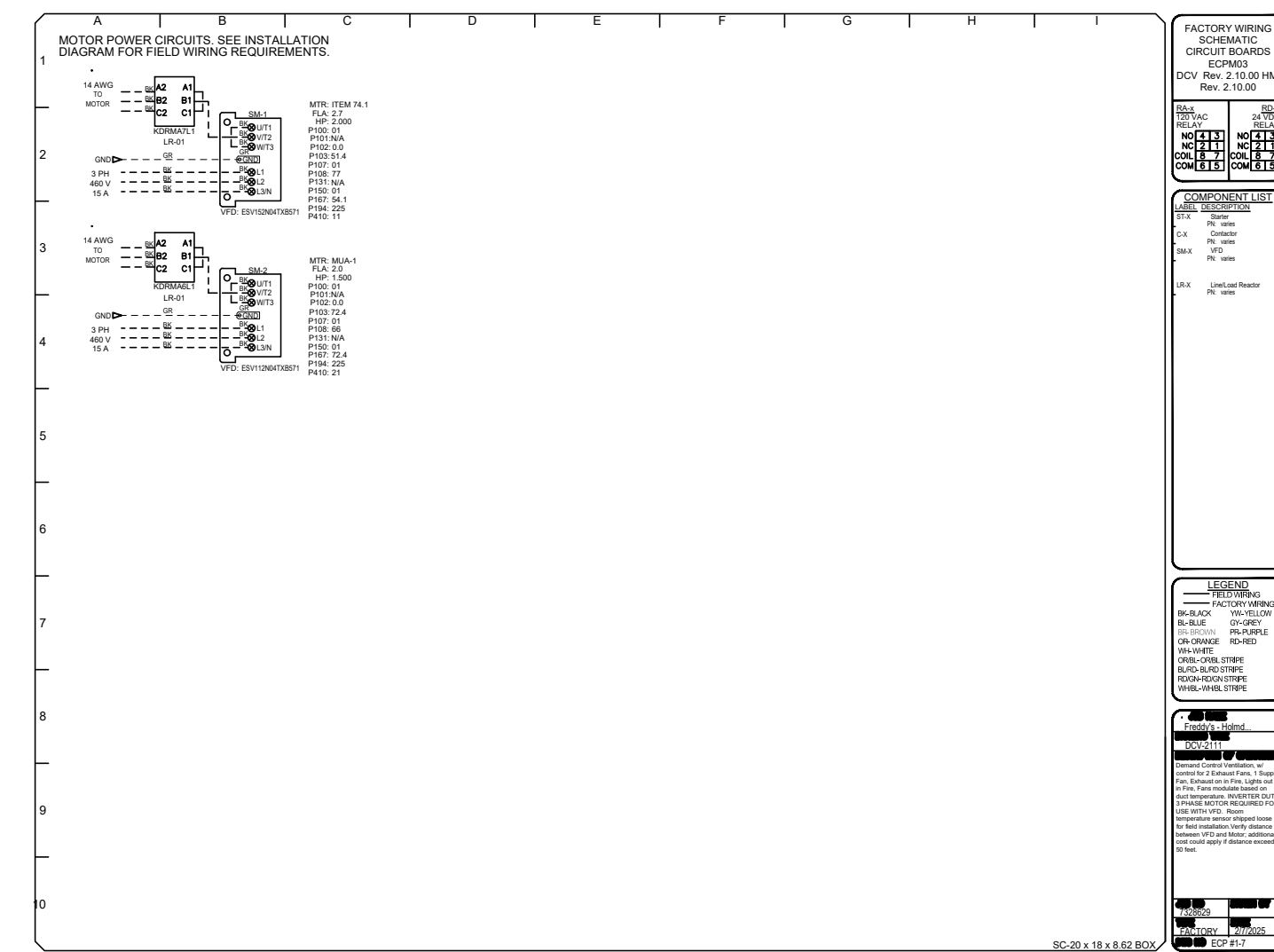
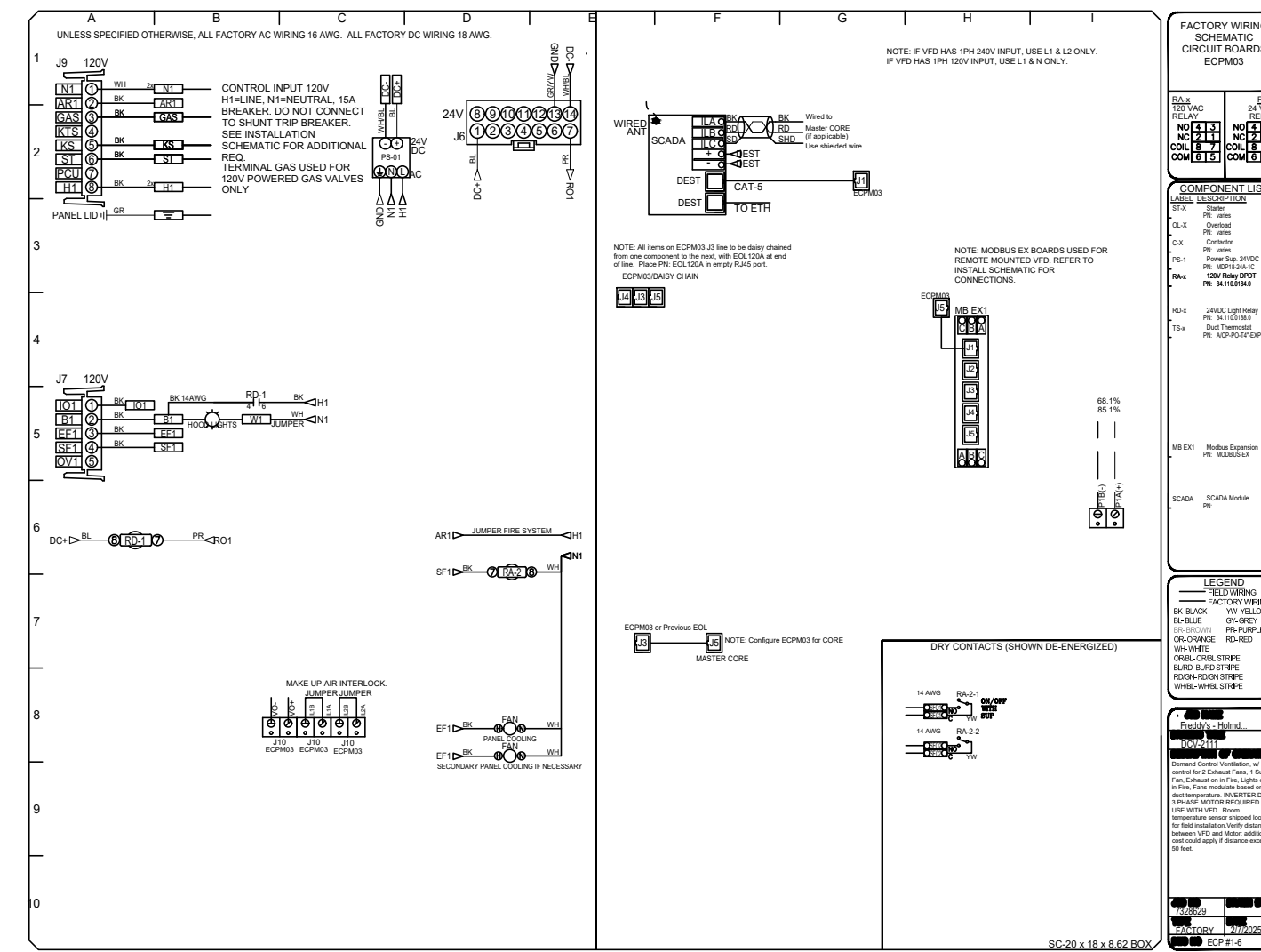
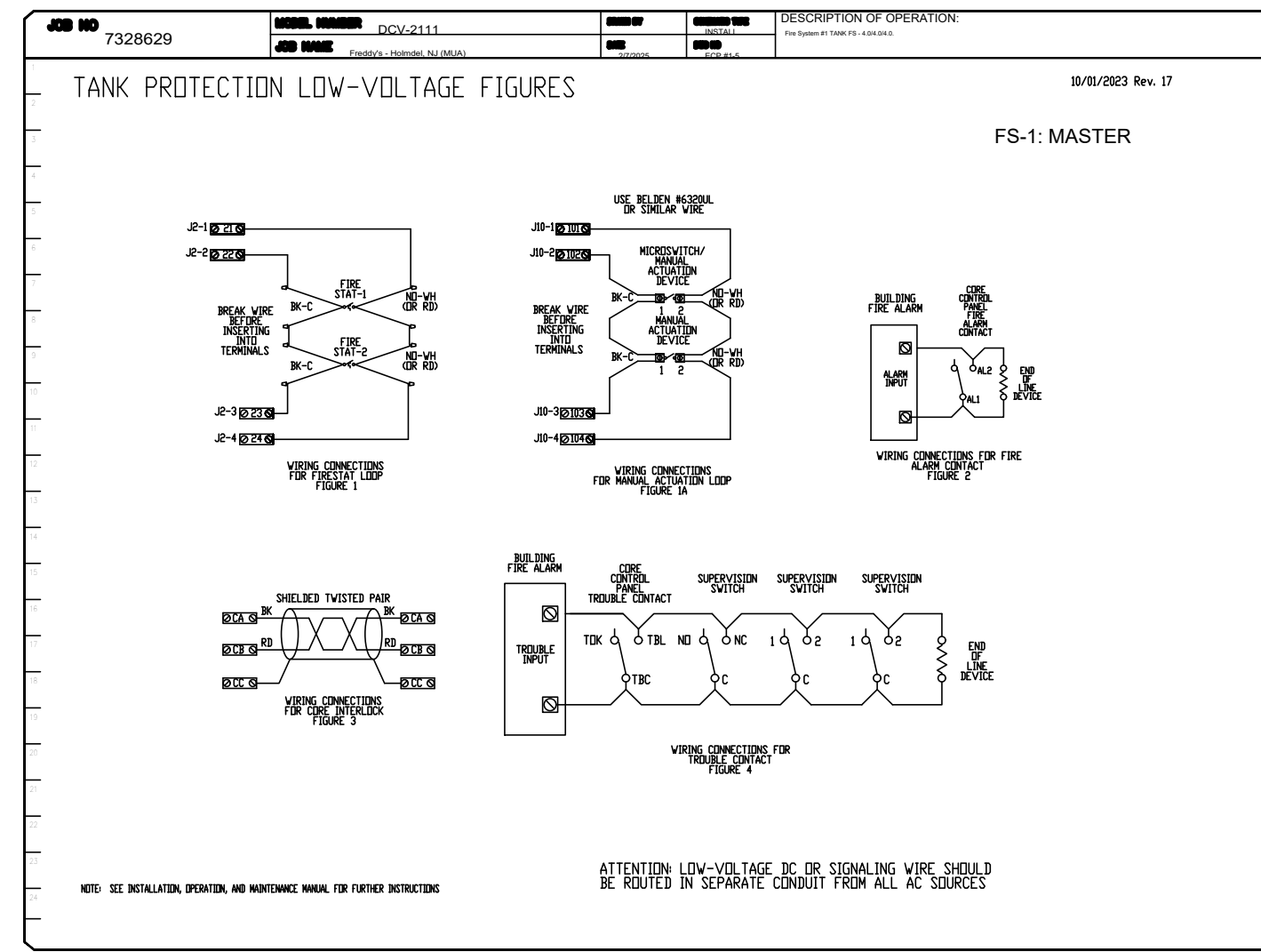
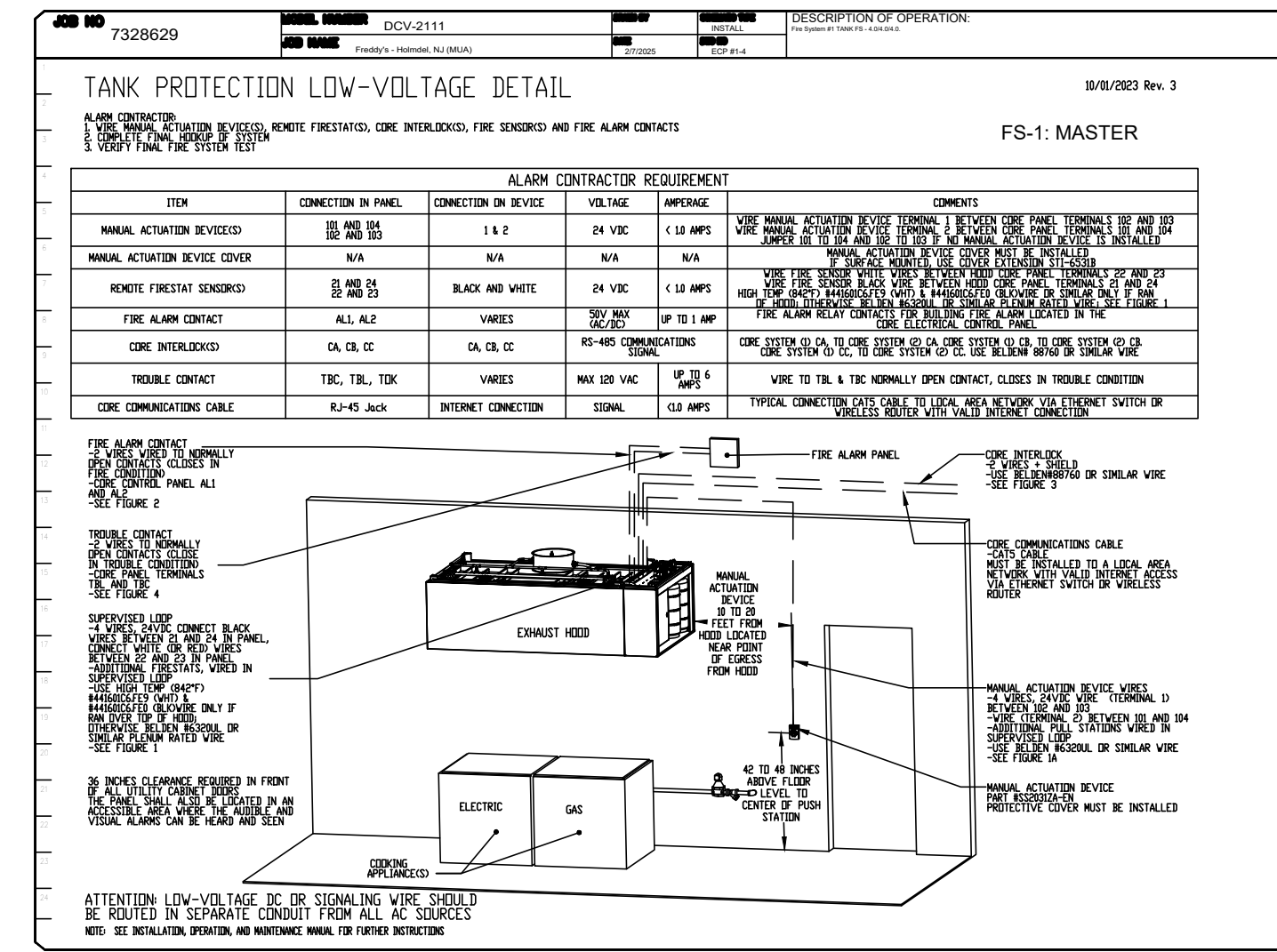
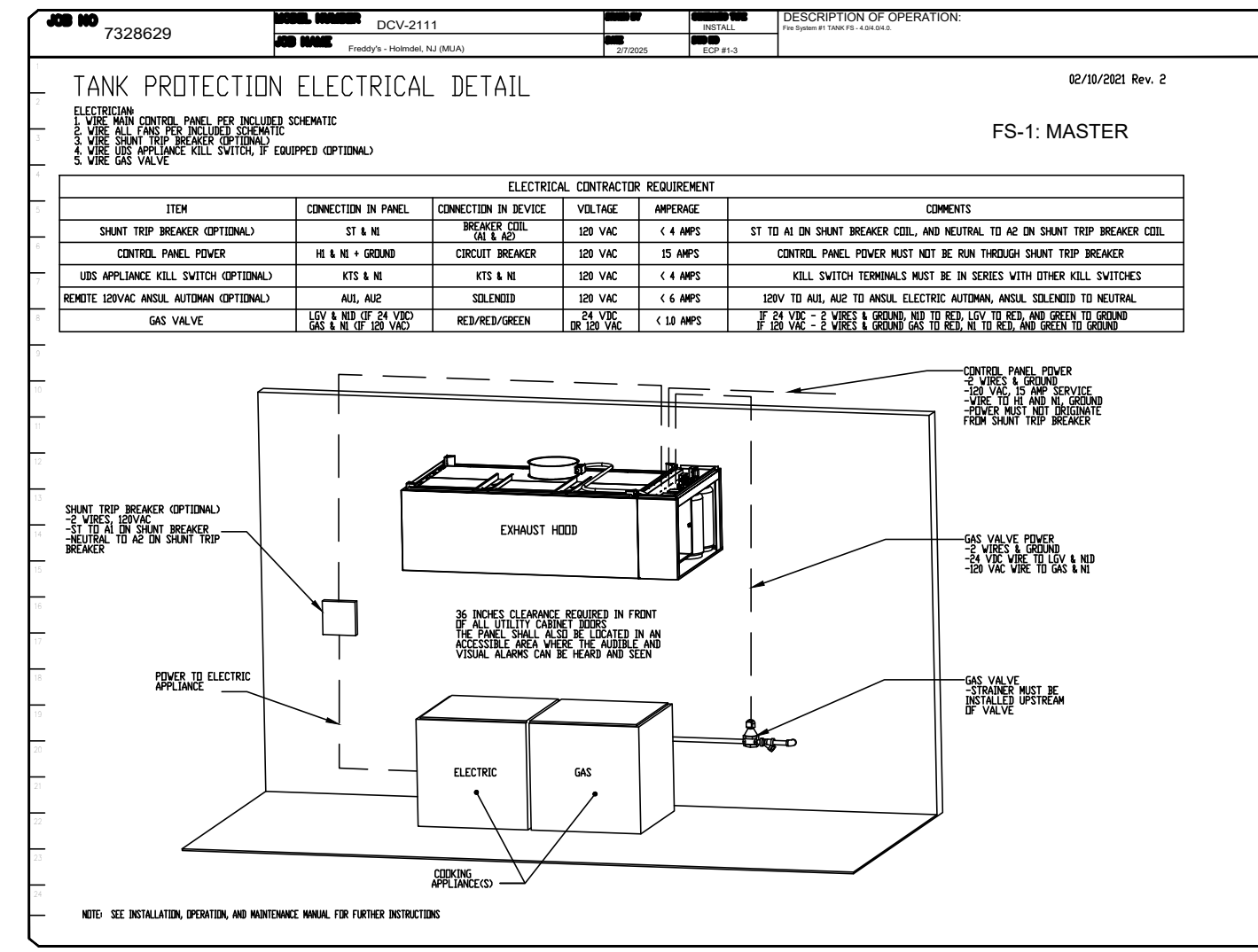
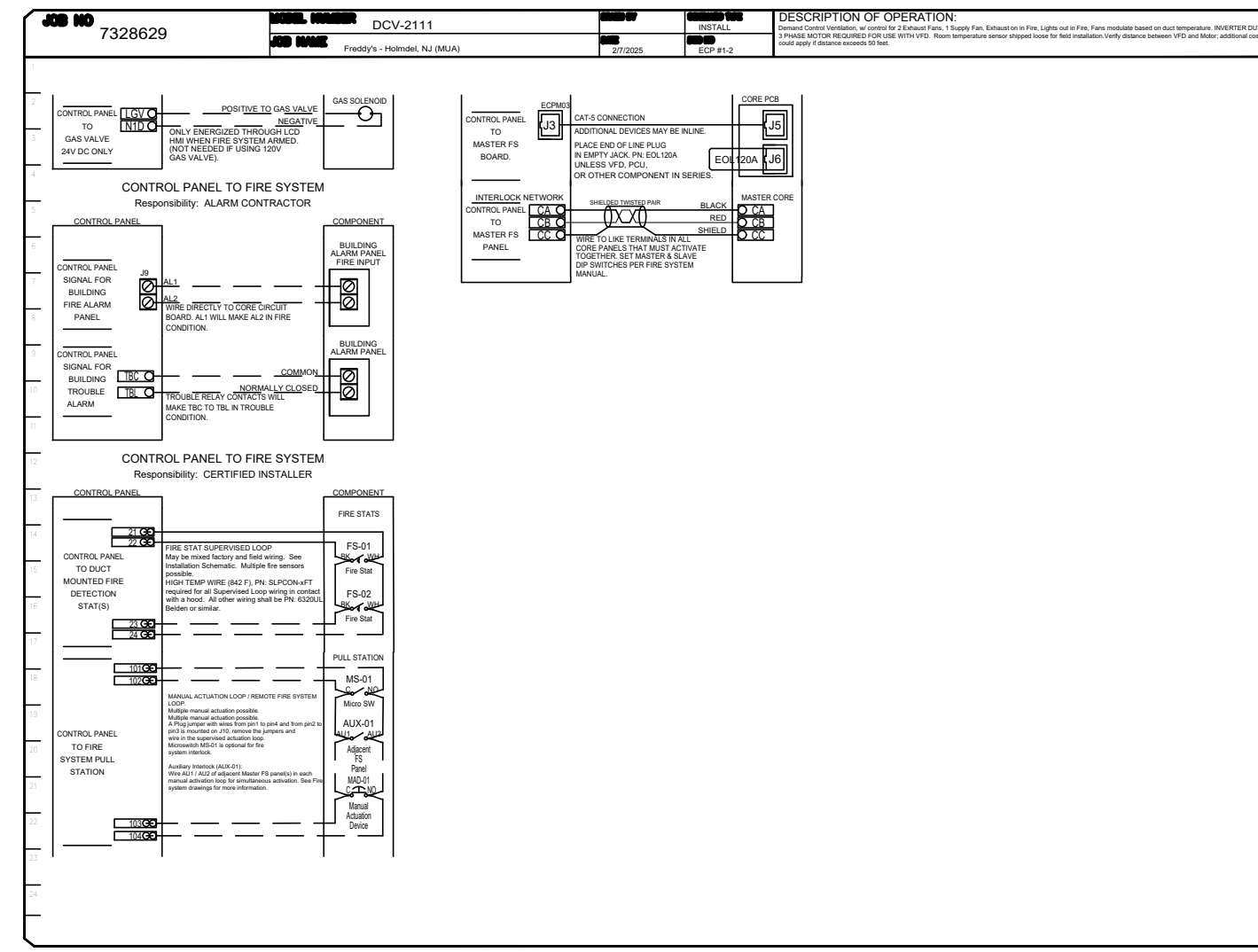
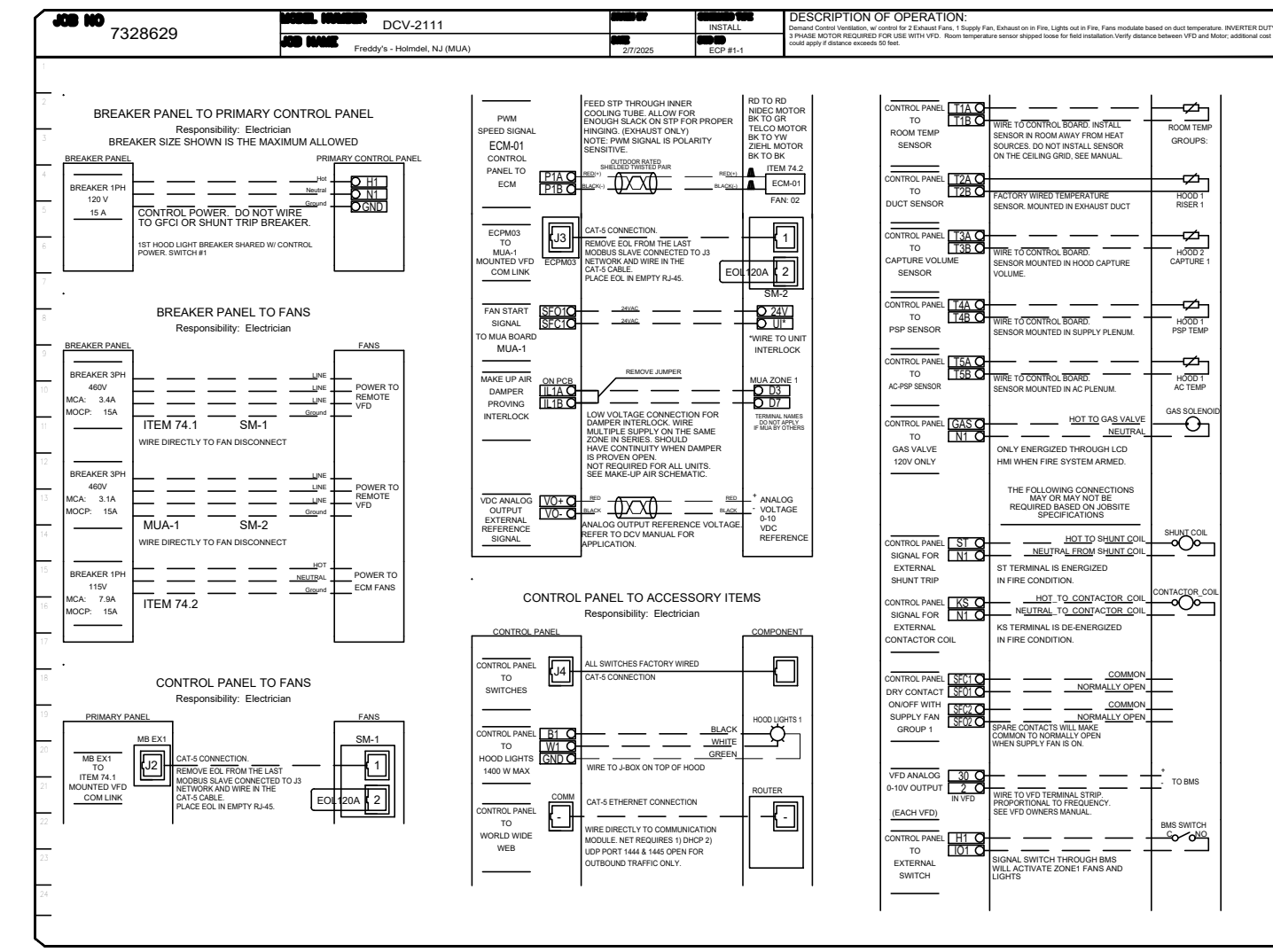
MECHANICAL - HOOD SPECIFICATIONS

DATE 1/13/2025

DRAWN BY: SC
 CHECKED BY: JS
 PROJECT NO: 0241-78
 SHEET NO. M2.2

ELECTRICAL PACKAGE - JOB#7328629

NO	TAG	PACKAGE #	LOCATION	SWITCHES		OPTION	PANEL CONTROLLED					
				LOCATION	QUANTITY		TASK TAG	TYPE	#	ZIP	BOX #	FLA
1	EQ#1	EQ#111	UTILITY CABINET LEFT	UTILITY CABINET LEFT	1 LIGHT		ITEM #1	CONDUIT	3	2000	400	27
				HOOD # 1	1 FAN	SMART CONTROLS/DOV	ITEM #2	CONDUIT	3	2000	400	27
							ITEM #3	CONDUIT	3	2000	400	27
							ITEM #4	SUPPLY	3	1500	400	23



REVISIONS

NO.	DESCRIPTION	DATE

CAPTIVE

www.captiveinc.com

HBT Foodservice

104 W 9th St Suite 204, Kansas City, MO 64106 PHONE: (816) 221-8575 FAX: (816) 221-15311 EMAIL: reg@hbt.com

Freddy's - Holmdel, NJ (MUA)
HOLMDEL, NJ, 07733

DATE: 2/7/2025
DWG.#: 7328629
DRAWN BY: michael.co
SCALE: 1/2" = 1'-0"
MASTER DRAWING

SHEET NO. 5

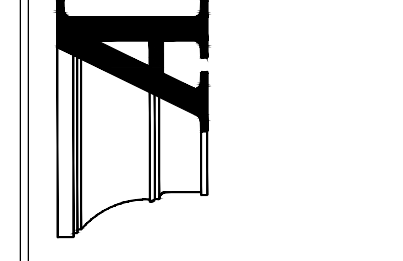


THIS DRAWING IS OWNED BY OR LICENSED TO FREDDY'S FROZEN CUSTARD & STEAKBURGERS OR ITS AFFILIATED OR RELATED COMPANIES AND MAY NOT BE REPRODUCED, COPIED, DISSEMINATED, PUBLISHED, OR TRANSMITTED IN ANY FORM OR BY ANY MEANS, ELECTRONIC OR MECHANICAL, WITHOUT THE WRITTEN CONSENT OF ARCHITRAVE GROUP P.C. COPYRIGHT INFRINGEMENT IS A VIOLATION OF FEDERAL LAW SUBJECT TO CIVIL AND CRIMINAL PENALTIES.

THE CONTRACTOR IS TO VERIFY ALL DIMENSIONS AND CONDITIONS ON THE PROJECT AND TO REPORT ANY DISCREPANCIES TO THE ARCHITRAVE GROUP CLIENTS & DESIGNERS REPRESENTATIVE PRIOR TO COMMENCEMENT OF WORK. THESE DRAWINGS ARE NOT TO BE USED FOR CONSTRUCTION PURPOSES UNLESS INDICATED BY FREDDY'S FROZEN CUSTARD & STEAKBURGERS AS ISSUED FOR CONSTRUCTION.

FREDDY'S FROZEN CUSTARD
COMMONS AT HOLMDEL - BLOCK 50.35, LOT 1
2136 ROUTE 35 SOUTH - UNIT 200
HOLMDEL, NEW JERSEY

Architrave GROUP P.C.
2517 Route 35 - Building E - Suite 101
Manasquan, New Jersey 08733
Phone (732) 212-0059
JOSE C. SANTOS, RA - NJ A18745



MECHANICAL - HOOD SPECIFICATIONS

DATE 1/13/2025

DRAWN BY: SC
CHECKED BY: JS
PROJECT NO: 024-78
SHEET NO. **M2.6**