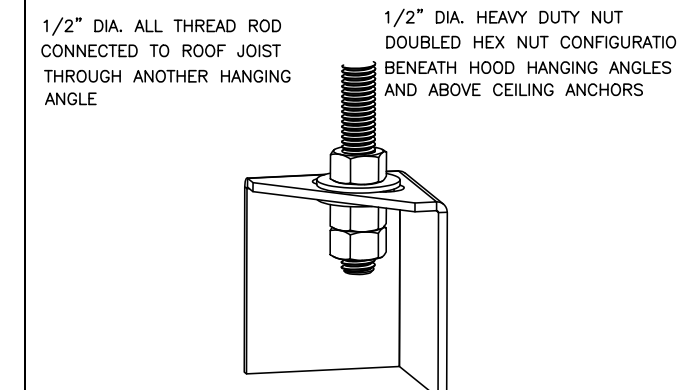


ND-2 HANGING ANGLE DETAIL



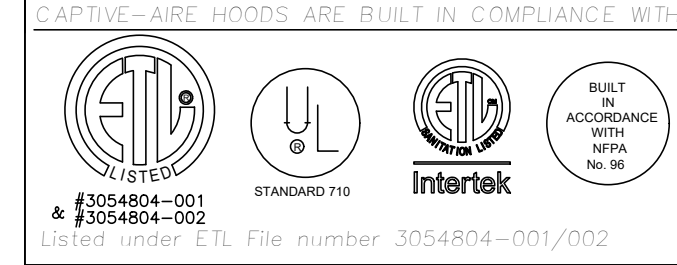
HANGING ANGLE LOCATIONS

HOOD STYLE	DIM FROM REAR	DIM FROM FRONT (24\"/>	
CANOPY ND2	4.166"	2.246"	2.246"
ND2-PSP-F	4.166"	2.246"	2.246"
BACKSHELF BD-2	4.166"	2.246"	-
VHB/VHB-C	36"X36"	42"X42"	48"X48"
FRONT/BACK DIMS BY SIZE	2.246"	2.246"	2.246"

CALCULATIONS UTILIZED

EXHAUST CAPACITY OF HOOD X CFM/INCH (SQ) IN
 SUPPLY CFM=EXHAUST CFM X PERFORMANCE REQUIRED
 TOTAL DUCT AREA=144 X
 DUCT LENGTH= TOTAL DUCT AREA
 DUCT DEPTH=

BUILDING CODES



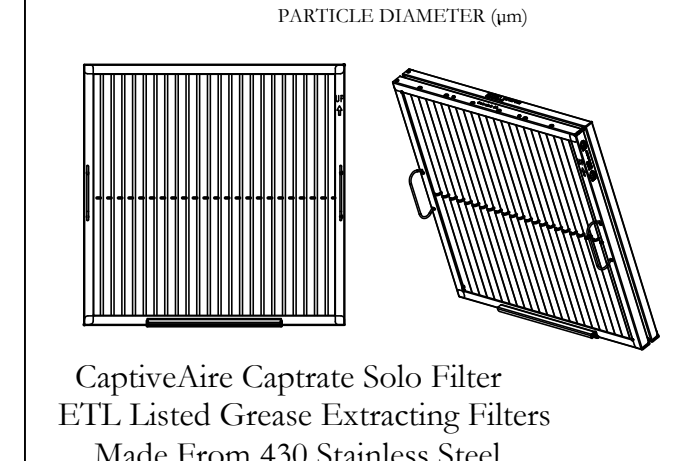
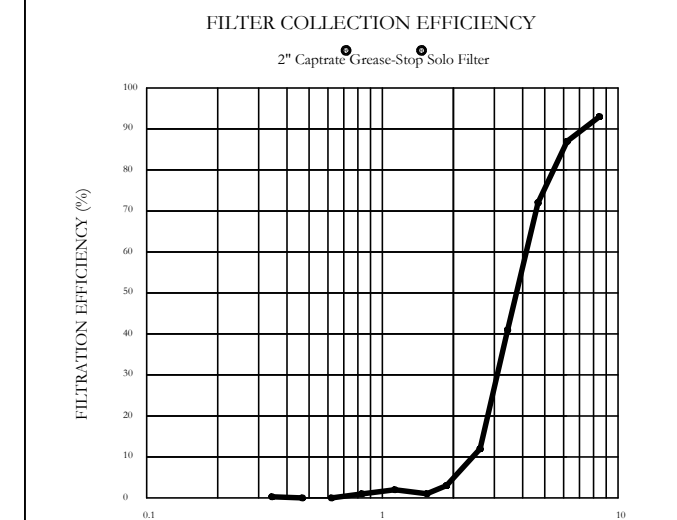
CLEARANCE TO COMBUSTIBLES

MATERIAL	CLEARANCE REDUCTION SYSTEM
NON-COMBUSTIBLE	NONE REQUIRED
LIMITED-COMBUSTIBLE	3" UNSHROTTLED STANDOFF
COMBUSTIBLE	1" INSULATED STANDOFF

GENERAL NOTES

1. ALL ELECTRICAL "FIELD" CONNECTIONS AND RELATED INTERCONNECTIONS BY ELECTRICAL CONTRACTORS.
2. ALL PLUMBING "FIELD" CONNECTIONS AND RELATED INTERCONNECTIONS BY PLUMBING CONTRACTORS.
3. HANGING BRACKETS LOCATED AND WELDED AS SHOWN ON PLANS. ALL OTHER HANGER MATERIALS PROVIDED BY INSTALLING CONTRACTORS.
4. ALL CONNECTIONS FROM CAPTIVE-AIRE HOODS TO MECHANICAL CONTRACTOR'S PLANS.
5. COOKING EQUIPMENT TO SHUT-OFF IN EVENT OF FIRE.
6. EXHAUST FANS TO TURN ON IN EVENT OF FIRE.
7. ALL LIGHTS/FIXTURES SHOWN INSTALLED BY CAPTIVE-AIRE ARE FACTORY PROVIDED. INTERCONNECTIONS BETWEEN HOODS AND TO SWITCHES BY ELECTRICAL CONTRACTORS.
8. SEISMIC RESTRAINTS ARE RESPONSIBILITY OF INSTALLING CONTRACTOR.
9. INSTALLING CONTRACTORS ASSUME ALL RELATED RESPONSIBILITY FOR VERIFICATION OF DIMENSIONAL DATA CONTAINED ON THESE DOCUMENTS FOR ACCURACY, INTEGRATION, AND ADHERENCE TO ALL CODE REQUIREMENTS IN EFFECT PRIOR TO ANY RELEASE FOR PRODUCTION OF EQUIPMENT SHOWN.
10. KITCHEN HOODS MUST BE BALANCED WITH KITCHEN.
11. KITCHEN SHALL BE NEGATIVE WITH RESPECT TO AMBIENT PRESSURE.
12. RESTAURANT SHALL BE POSITIVE WITH RESPECT TO AMBIENT PRESSURE.
13. WRITTEN HOOD DIMENSIONS HAVE PRECEDENCE OVER SCALE.
14. SIGNED AND "APPROVED" COPIES OF THIS DOCUMENT MUST BE RECEIVED BY THE FACTORY PRIOR TO COMMENCEMENT OF FABRICATION.

FILTER DETAIL



CaptiveAir Captrate Solo Filter
 ETL Listed Grease Extracting Filters
 Made From 430 Stainless Steel

HOOD INFORMATION - JOB#738629

HOOD NO	TAG	MODEL	MANUFACTURER	LENGTH	MAX COOKING TEMP	TYPE	APPLIANCE DUTY	DESIGN CFM/FIT	TOTAL EIM CFM	EXHAUST FLENUM (INCHES)	WIDTH	LENG	HTGHT	DIA	CFM	VEL	SP	MUA CFM	AC CFM	HOOD CONSTRUCTION	HOOD END TO END	BROW	PATENT NUMBERS
1	ITEM 33A	5424	CAPTIVEAIRE	8'0"	450 DEG	I	MEDIUM	200	1600	4"	14"	1600	1407	-0.734"	1280	500	430 SS	WHERE EXPOSED	ALONE	FRONT			AC-PSP (UNITED STATES) - US PATENT 736880 B2 AC-PSP (CANADA) - CA PATENT 2202008 AC-PSP (ISLAND CANADA) - CA PATENT 2503303
2	ITEM 33B	ND-2	CAPTIVEAIRE	8'0"	450 DEG	I	MEDIUM	155	775	4"	10"	775	1421	-0.430"	620	339	430 SS	WHERE EXPOSED	ALONE	ALONE			

HOOD NO	TAG	TYPE	QTY	HEIGHT	LENGTH	EFFICIENCY	FIMICRONS	QTY	TYPE	WIRE GAUGE	LOCATION	SIZE	TYPE	SIZE	MODEL	QUANTITY	FIRE HOOD SYSTEM	HANGING PIPING	WEIGHT	
1	ITEM 33A	CAPTIVATE SOLO FILTER	5	10"	10"	85	SEE FILTER SPEC	2	RECESSED ROUND	NO	LEFT	12"x6"x24"	TANK FS	4.04	04.0	DCV-2111	1 FAN	YES	1064	468
2	ITEM 33B	CAPTIVATE SOLO FILTER	3	10"	10"	85	SEE FILTER SPEC	2	RECESSED ROUND	NO	NO						YES	468	468	

HOOD OPTIONS

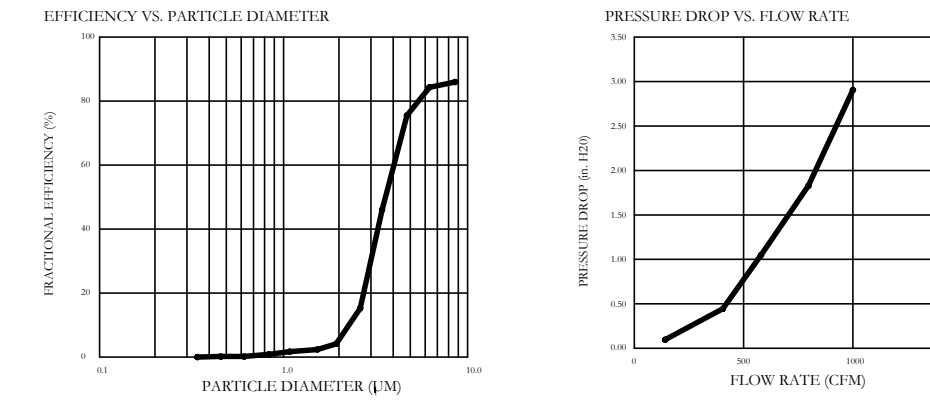
NO	TAG	OPTION
1	ITEM 33A	FIELD WRAPPER 18.00" HIGH FRONT, LEFT, RIGHT RIGHT END STANDOFF (FINISHED) 1" WIDE 50" LONG INSULATED LEFT QUARTER END PANEL 22" TOP WIDTH, 0" BOTTOM WIDTH, 22" HIGH 430 SS RIGHT QUARTER END PANEL 22" TOP WIDTH, 0" BOTTOM WIDTH, 22" HIGH 430 SS INSULATION FOR TOP OF HOOD INSULATION FOR BACK OF HOOD
2	ITEM 33B	FIELD WRAPPER 18.00" HIGH FRONT, LEFT, RIGHT LEFT QUARTER END PANEL 22" TOP WIDTH, 0" BOTTOM WIDTH, 22" HIGH 430 SS INSULATION FOR TOP OF HOOD INSULATION FOR BACK OF HOOD RISER SENSOR INSTALL ON FLENUM

PERFORATED SUPPLY PLenums

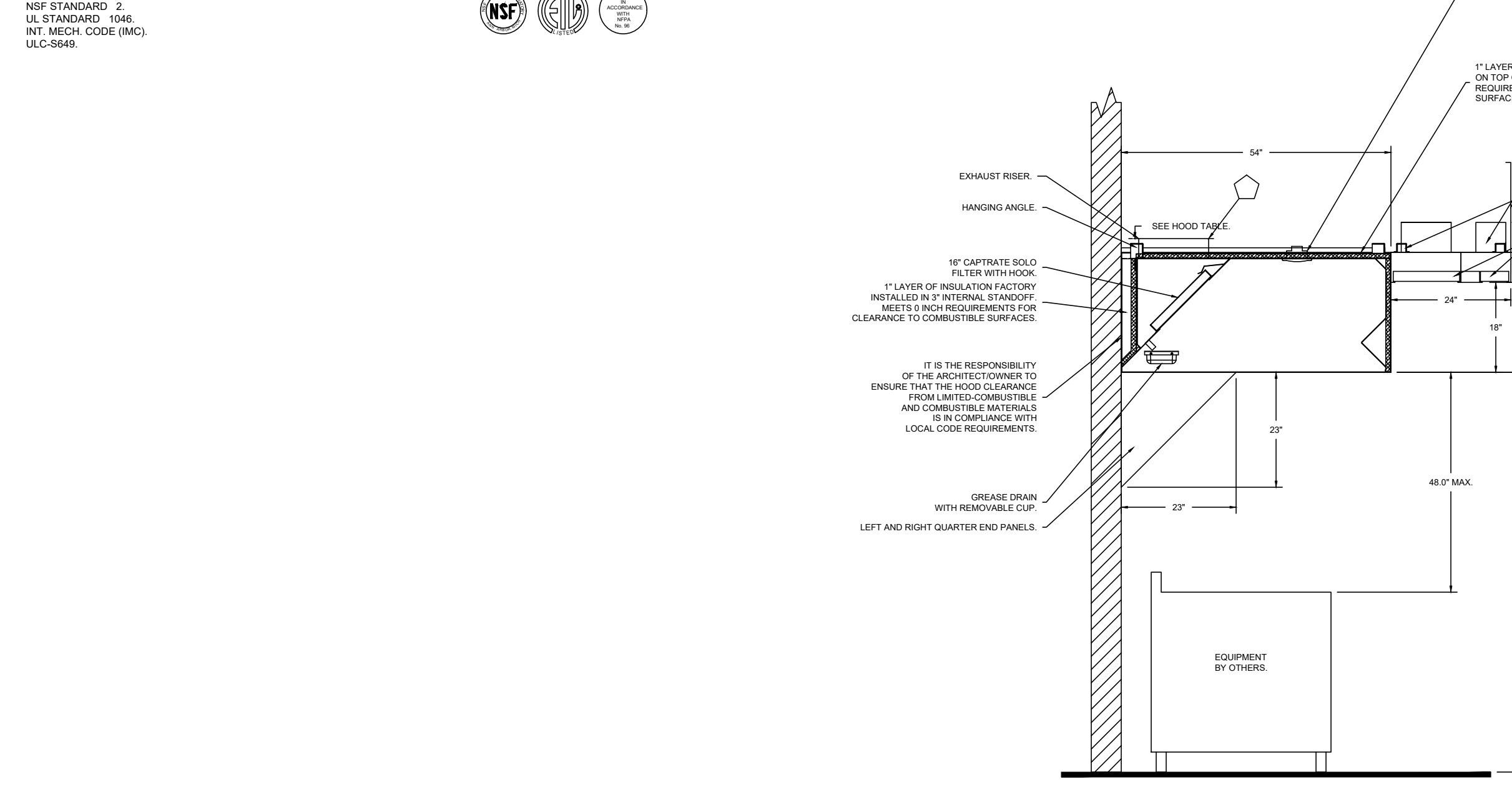
HOOD NO	TAG	POS	LENGTH	WIDTH	HEIGHT	TYPE	WIDTH	LENG	DIA	CFM	SP
1	ITEM 33A	Front	100"	24"	6"	MUA	12"	256	0.084"		
						MUA	12"	256	0.084"		
						MUA	12"	256	0.084"		
						MUA	12"	256	0.084"		
						MUA	12"	256	0.084"		
						AC	8"	100	0.032"		
						AC	8"	100	0.032"		
						AC	8"	100	0.032"		
						AC	8"	100	0.032"		
						MUA	10"	155	0.047"		
						MUA	10"	155	0.047"		
						MUA	10"	155	0.047"		
2	ITEM 33B	Front	60"	22"	6"	MUA	10"	155	0.047"		
						MUA	10"	155	0.047"		
						MUA	10"	155	0.047"		
						MUA	10"	155	0.047"		
						MUA	10"	155	0.047"		
						AC	8"	103	0.034"		
						AC	8"	103	0.034"		
						AC	8"	103	0.034"		
						AC	8"	103	0.034"		
						MUA	10"	155	0.047"		
						MUA	10"	155	0.047"		
						MUA	10"	155	0.047"		

SPECIFICATION CAPTIVATE GREASE STOP SOLO FILTER

THE CAPTIVATE GREASE STOP SOLO FILTER IS A SINGLE STAGE FILTER FEATURING A UNIQUE DESIGN IN CONJUNCTION WITH A BOTTLED REAR Baffle DESIGN TO DELIVER EXCEPTIONAL FILTRATION EFFICIENCY.
 FILTER IS STAINLESS STEEL CONSTRUCTION, AND SIZED TO FIT INTO STANDARD 2 INCH DEEP HOOD CHANNELS.
 UNITS SHALL INCLUDE STAINLESS STEEL HANDLES AND A FASTENING DEVICE TO SECURE THE TWO COMPONENTS WHEN ASSEMBLED.
 GREASE EXTRACTION EFFICIENCY PERFORMANCE SHALL REMOVE AT LEAST 75% OF GREASE PARTICLES PER MICRONS IN SIZE, AND 95% GREASE PARTICLES BEYOND MICRONS IN SIZE AND LARGER, WITH A CORRESPONDING PRESSURE DROP NOT TO EXCEED 1 INCHES OF WATER GAUGE.
 THE CAPTIVATE GREASE STOP SOLO WAS TESTED TO ASTM STANDARD ASTM F655-05 MANUFACTURER APPROVED FOR USE IN SOLID FUEL APPLICATIONS AS A SPARK ARRESTER.
 EFFICIENCY VS. PARTICLE SIZE TABLE



CLEARANCE TO COMBUSTIBLES



SECTION VIEW - MODEL 5424ND-2-ACPS-P HOOD - #1 (ITEM 33A)
 SECTION VIEW - MODEL 5424ND-2-ACPS-P HOOD - #2 (ITEM 33B)

HOODS	SURFACE	CLEARANCE
1	TOP	0"
	FRONT	0"
	BACK	0"
	RIGHT	0"
2	TOP	0"
	FRONT	0"
	BACK	0"
	RIGHT	18"

* IF CLEARANCE TO COMBUSTIBLES CONFORMS TO UL70 STANDARD.
 - HOOD MOUNTED UTILITY CABINETS REQUIRE 30" SURFACE CLEARANCE.

CUSTOMER APPROVAL TO MANUFACTURE

A. In set as noted

A. In set with NCE or 501 To on

Re Use and Reuse

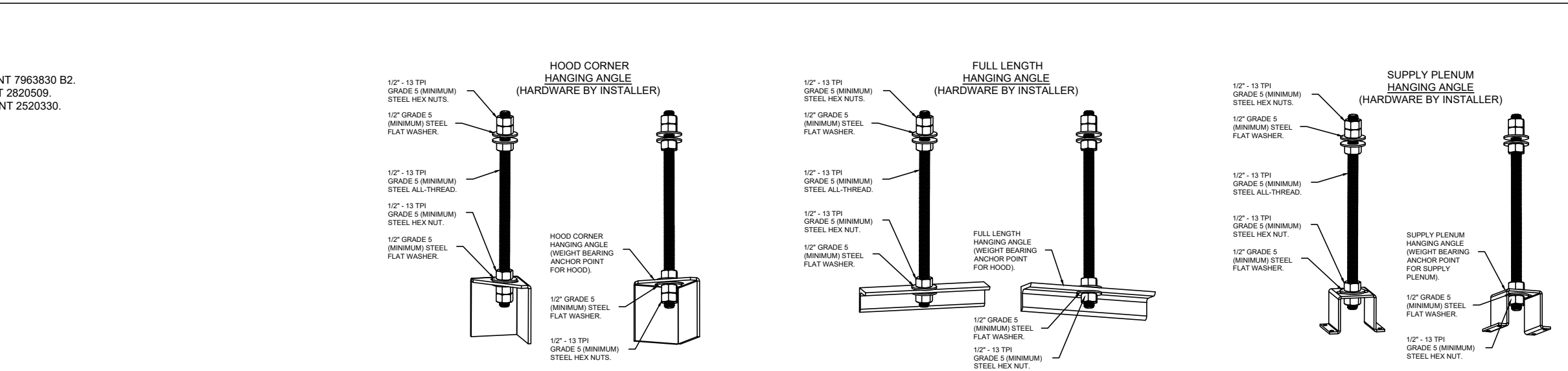
SIGNATURE _____

Your Title _____ Date _____

NOTE
 ALL WALLS AND STRUCTURES THAT COME WITHIN 18" OF HOOD MUST BE METAL STUDS AND SHEETROCK. WOOD STUDS OR ANY OTHER COMBUSTIBLE MATERIAL WITHIN 18" OF HOOD NO ALLOWED.

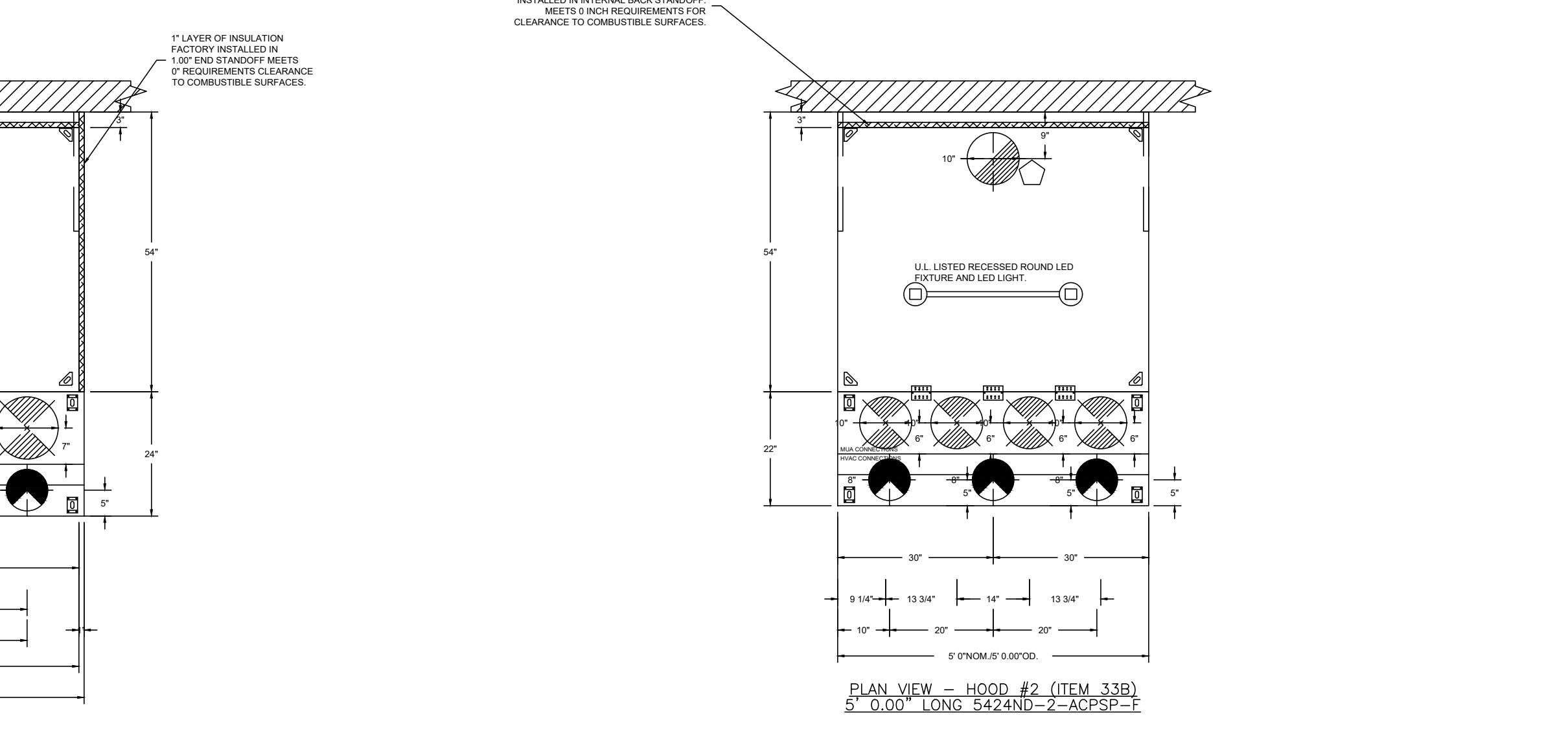
NOTE
 HOOD MANUFACTURER RECOMMENDS NO RETURNS OR AWAY OFFISERS WITHIN 10 FEET OF HOOD IN ALL DIRECTION.

NOTE
 MAKEUP AIR SHALL BE DELIVERED INTO SPACE IN MANNER THAT WILL NOT DISRUPT HOODS ABILITY TO CAPTURE AND CONTAIN.



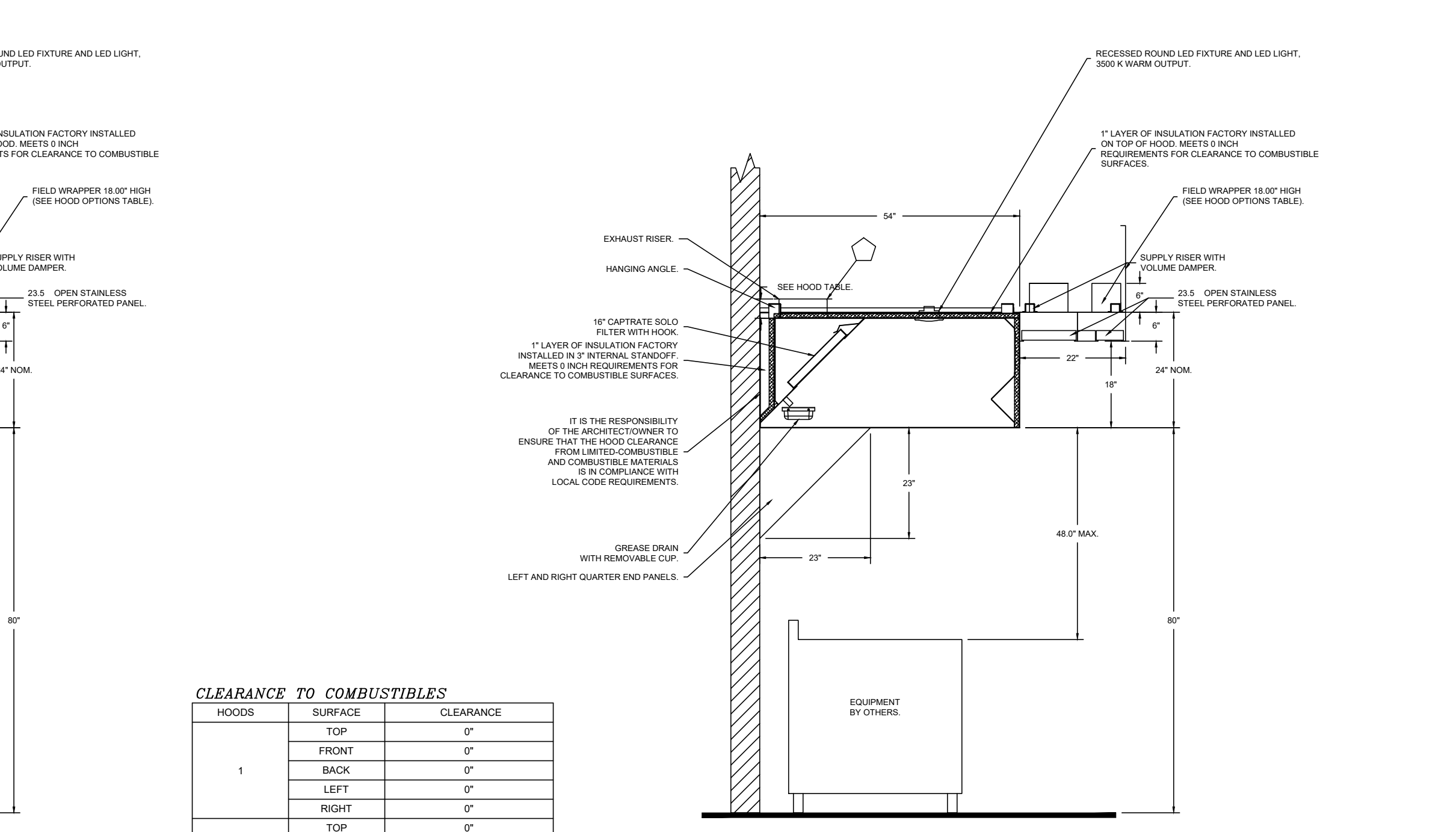
ASSEMBLY INSTRUCTIONS

HANGING ANGLE MUST BE SUPPORTED WITH 1/2" - 13 TRIP GRADE 5 (MINIMUM ALL-THREAD) HANGING ANGLES AND CEILING ANCHOR POINTS WITH 1/2" GRADE 5 (MINIMUM) STEEL FLAT WASHERS AND 1/2" - 13 TRIP GRADE 5 (MINIMUM) HEX NUTS AS SHOWN. MUST USE DOUBLED HEX NUT CONFIGURATION BENEATH HOOD HANGING ANGLES AND ABOVE CEILING ANCHORS. MAINTAIN 1/4" OF EXPOSED THREADS BENEATH BOTTOM HEX NUT. TORQUE ALL HEX NUTS TO 57 FT-LBS.



PLAN VIEW - HOOD #1 (ITEM 33A) 6' 0.00" LONG 5424ND-2-ACPS-P
 PLAN VIEW - HOOD #2 (ITEM 33B) 5' 0.00" LONG 5424ND-2-ACPS-P

ACPS SHIPS LOOSE FOR FIELD INSTALLATION



SECTION VIEW - MODEL 5424ND-2-ACPS-P HOOD - #1 (ITEM 33A)
 SECTION VIEW - MODEL 5424ND-2-ACPS-P HOOD - #2 (ITEM 33B)

* IF CLEARANCE TO COMBUSTIBLES CONFORMS TO UL70 STANDARD.
 - HOOD MOUNTED UTILITY CABINETS REQUIRE 30" SURFACE CLEARANCE.

CUSTOMER APPROVAL TO MANUFACTURE

A. In set as noted

A. In set with NCE or 501 To on

Re Use and Reuse

SIGNATURE _____

Your Title _____ Date _____

NOTE
 ALL WALLS AND STRUCTURES THAT COME WITHIN 18" OF HOOD MUST BE METAL STUDS AND SHEETROCK. WOOD STUDS OR ANY OTHER COMBUSTIBLE MATERIAL WITHIN 18" OF HOOD NO ALLOWED.

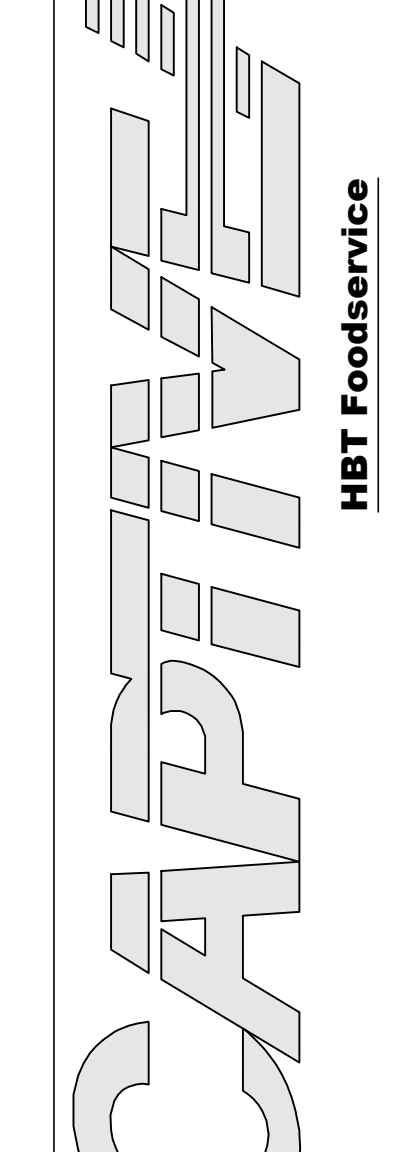
NOTE
 HOOD MANUFACTURER RECOMMENDS NO RETURNS OR AWAY OFFISERS WITHIN 10 FEET OF HOOD IN ALL DIRECTION.

NOTE
 MAKEUP AIR SHALL BE DELIVERED INTO SPACE IN MANNER THAT WILL NOT DISRUPT HOODS ABILITY TO CAPTURE AND CONTAIN.

REVISIONS

NO	DESCRIPTION	DATE

www.aire.com
 HBT Foodservice
 104 W 9th St Suite 204, Kansas City, MO 64106 PHONE: (816) 221-8575 FAX: (816) 221-1531 EMAIL: reggs@aire.com



Freddy's - Hol del, NJ (MUA)
 HOLMDEL, NJ, 07733

DATE: 2/7/2025
 DWG.#: 7328629
 DRAWN BY: i hael o
 SCALE: 1/2" = 1'-0"
 MASTER DRAWING

SHEET NO. 1



THE DRAWING IS OWNED BY OR LICENSED FOR USE BY FREDDY'S FROZEN CUSTARD & STEAKBURGERS OR ITS AFFILIATED OR RELATED COMPANIES AND MAY NOT BE REPRODUCED, COPIED, EITHER WHOLLY OR IN PART, OR TRANSMITTED IN ANY FORM OR BY ANY MEANS, EXCEPT WITH THE PRIOR WRITTEN CONSENT OF ARCHITRAVE GROUP, INC. COPYRIGHT INFRINGEMENT IS A VIOLATION OF FEDERAL LAW SUBJECT TO CRIMINAL AND CIVIL PENALTIES.

THE CONTRACTOR IS TO VERIFY ALL DIMENSIONS AND CONDITIONS OF THE PROJECT AND TO REPORT ANY DISCREPANCIES TO THE ARCHITRAVE GROUP DESIGN REPRESENTATIVE PRIOR TO COMMENCING WORK. THESE DRAWINGS ARE NOT TO BE USED FOR CONSTRUCTION PURPOSES UNLESS INDICATED BY FREDDY'S FROZEN CUSTARD & STEAKBURGERS AS ISSUED FOR CONSTRUCTION.

FREDDY'S FROZEN CUSTARD
COMMONS AT HOLMDEL - BLOCK 50.35, LOT 1
2136 ROUTE 35 SOUTH - UNIT 200
HOLMDEL, NEW JERSEY

architrave GROUP P.C.
 2517 Route 35 - Building E - Suite 101
 Manasquan, New Jersey 08735-2150
 Phone: (732) 261-0059
 JOSE C. SANTOS, RA. - NJ A18745

MECHANICAL - HOOD SPECIFICATIONS

DATE 1/13/2025
 REV 1 3/14/2025

DRAWN BY: SC
 CHECKED BY: JS
 PROJECT NO: 024178
 SHEET NO. M2.2

