

HVAC ABBREVIATIONS

ACC	AIR COOLED CONDENSING UNIT (VAV)
AHJ	AIRSIDE FRESH AIR FLOOR
AJG	AIR FRESH GRADE
AHU	AIR HANDLING UNIT
CF	CEILING FRESH AIR
CU	CONDENSING UNIT (COOL)
EF	EXHAUST FAN
ER	EXHAUST REGISTER
EV/DTG	EXISTING
HO	HOOD
MAU	MAKEUP AIR UNIT
ODD	OUTDOOR AIR
RS	RETURN REGISTER
RTU	ROOF UNIT
SR	SUPPLY REGISTER
VSC	VARIABLE SPEED CONTROL

SUPPLIER/VENDOR ABBREVIATIONS

CO2AS	TECHNATS CO2 ALARM SUPPLIER
CC	CONCRETE CONTRACTOR
HE3	TECHNATS HVAC EQUIPMENT SUPPLIER
HS	TECHNATS HOOD SUPPLIER
HTS	TECHNATS VITRINE EQUIPMENT SUPPLIER
TAS	TECHNATS TEST & BALANCE VENDOR
TCC	TECHNATS CABLING CONTRACTOR
TCC	TECHNATS DUCT CLEANER
TEMS	TECHNATS ENERGY MANAGEMENT SYSTEM SUPPLIER
TGA	TECHNATS LIGHT/FAUX SUPPLIER
TMA	TECHNATS MAKEUP SUPPLIER
TNS	TECHNATS TIES & BALANCE SUPPLIER
TNS	TECHNATS SEALING SUPPLIER
TP	TECHNATS TYPING SUPPLIER
TW	TECHNATS SMOKE VENDOR
TW	TECHNATS ON SWITCHES SUPPLIER
TWS	TECHNATS WATER COOLER SUPPLIER
WHS	TECHNATS WATER HEATER SUPPLIER

HVAC GENERAL NOTES

- GENERAL NOTES APPLY TO HVAC SHEETS.
- WORK SHALL COMPLY WITH STATE AND LOCAL CODE REQUIREMENTS AS APPROVED AND AMENDED BY THE AUTHORITY HAVING JURISDICTION, INCLUDING APPLICABLE SECTIONS OF NFPA, THE MECHANICAL CODE, AND ANY INTERIM AMENDMENTS AT THE TIME OF THE PROPOSAL. PURCHASE PERMITS ASSOCIATED WITH THE WORK. OBTAIN INSPECTIONS REQUIRED BY CODE. SEE COVER SHEET IN ARCHITECTURAL SET FOR THE PREVAILING CODES.
- CONTRACTOR AND SUBCONTRACTORS SHALL REVIEW A COMPLETE SET OF THE CONSTRUCTION DOCUMENTS.
- COORDINATE WORK WITH THE WORK OF OTHER TRADES, EQUIPMENT FURNISHED BY OTHERS, REQUIREMENTS OF THE OWNER, AND OF THE EXISTING CONDITIONS AT THE PROJECT SITE.
- DRAWINGS FOR THE MECHANICAL WORK ARE DIAGRAMMATIC, SHOWING THE GENERAL LOCATION, TYPE, LAYOUT, AND EQUIPMENT REQUIRED. THE DRAWING SHALL NOT BE SCALE FOR EXACT MEASUREMENTS. REFER TO ARCHITECTURAL DRAWINGS FOR DIMENSIONS. REFER TO MANUFACTURER'S STANDARD INSTALLATION DRAWINGS FOR EQUIPMENT CONNECTIONS AND INSTALLATION REQUIREMENTS. PROVIDE DUCTWORK, CONNECTIONS, OFFSETS, ACCESSORIES, AND MATERIALS NECESSARY FOR A COMPLETE SYSTEM.
- DUCT DIMENSIONS ON PLANS INDICATE DIMENSIONS OF INTERNAL FREE AREA.
- PERFORATED CEILING DIFFUSERS SHALL BE 4-WAY UNLESS NOTED OTHERWISE.
- COORDINATE ROOF WORK (IF APPLICABLE) WITH THE OWNER'S CONSTRUCTION MANAGER PRIOR TO CONSTRUCTION.
- UNLESS NOTED OTHERWISE, RECTANGULAR DUCT ELBOWS GREATER THAN 45° SHALL BE MITERED ELBOWS WITH DOUBLE-THICKNESS TURNING VANES AND RECTANGULAR DUCT ELBOWS 45° OR LESS SHALL BE RADIOUS ELBOWS WITH AN INSIDE RADIUS OF AT LEAST 1/2 THE WIDTH OF THE DUCT.
- REPLACE AIR FILTERS WITH NEW, CLEAN, MERV 8 AIR FILTERS AT TURNOVER.
- THE TERM "FURNISH" MEANS SUPPLY AND DELIVER TO THE PROJECT SITE, READY FOR UNLOADING, UNPACKING, ASSEMBLY, INSTALLATION, AND SIMILAR OPERATIONS. THE TERM "INSTALL" DESCRIBES THE OPERATIONS AT THE PROJECT SITE INCLUDING THE ACTUAL UNPACKING, ASSEMBLY, ERECTING, PLACING, ANCHORING, APPLYING, WORKING TO DIMENSION, FINISHING, CURING, PROTECTING, CLEANING, AND SIMILAR OPERATIONS. THE TERM "PROVIDE" MEANS TO FURNISH AND INSTALL, COMPLETE AND READY FOR THE INTENDED USE.
- INSTALL LABELING CALLED FOR IN THE HVAC PLANS USING ENGRAVED PHENOLIC PLATES (WHITE WITH BLACK LETTERING) FURNISHED BY TSV.
- PROVIDE P3000 12 GA. UNBSTRUIT WITH PG FINISH FOR DUCT SUPPORTS AND OTHER UNBSTRUIT AREAS EXPOSED TO VIEW. SLOTTED UNBSTRUIT AND OTHER UNBSTRUIT WITH HOLES IS NOT ACCEPTABLE.
- REFRIGERANT PIPING SHALL BE BRAZED.

HVAC SPECIFICATIONS

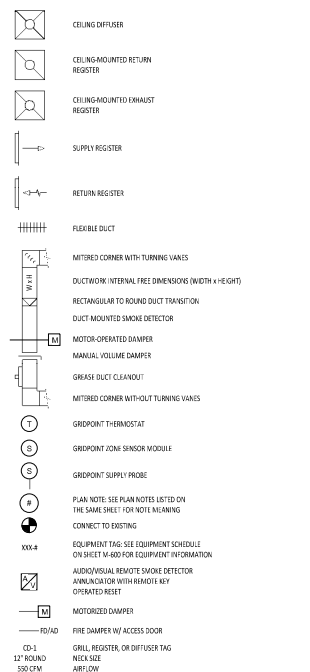
- SECTION 15745 - WATER SOURCE HEAT PUMPS**
- PART 1 - GENERAL**
- 1.1 SECTION REQUIREMENTS**
- Submittals: Product data and shop drawings.
 - Comply with ASHRAE 15 & applicable UL standards.
 - FEER: Equal to or greater than that prescribed by NY EEC62020
 - Warranties: Submit a written warranty, signed by the manufacturer, agreeing to the repair or replacement of components free of charge within 5 years of substantial completion.
- PART 2 - PRODUCTS**
- 2.1 HORIZONTAL & VERTICAL WATER SOURCE HEAT PUMPS**
- Factory assembled and sealed consisting of cabinet, sealed refrigerant circuit including compressor, refrigerant-to-water heat exchanger, refrigerant to air heat exchanger and reversing valve, evaporator fan, refrigeration & temperature controls, filters, drain pan, and piping kit.
 - Refer to WHSP schedule on sheet M400 for details.
 - Evaporator Fan: Corrosion resistant galvanized metal with min working pressure of 600 psig on refrigerant side & 450 psig on water side.
 - Refrigerant to air heat exchanger: Copper coil w/ aluminum fins, leak tested & pressure tested at the factory, rated to withstand 600 psig refrigerant working pressure.
 - Compressor: High efficiency scroll compressor with internal thermal overload & high pressure switch.
 - Refrigerant Tubing: Copper, with elastomeric insulation.
 - Economizer Coil: 3/8 inch copper & aluminum plate combination, proof and leak tested at factory.
- PART 3 - EXECUTION**
- 3.1 INSTALLATION**
- Install units level and plumb, firmly anchored in locations indicated, and maintain manufacturer's recommended clearances.
 - Connect condenser water supply & return piping to heat pump with unions and shut-off valves.
 - Connect heat pump drain pan to nearest indirect waste collection.
 - Connect ducts with flexible, union, provide transitions to match air or plenum connection size.
 - Connect units to wiring systems and to ground.
- END OF SECTION 15745

- SECTION 15855 - DIFFUSERS, REGISTERS, AND GRILLES**
- PART 1 - GENERAL**
- 1.1 SECTION REQUIREMENTS**
- Submittals: None.
- PART 2 - PRODUCTS**
- 2.1 CRUIETS AND INLETS**
- Diffusers:
 - Refer to CRUIETS, Registers, and Diffusers Schedule for equipment schedule
 - Manufacturer: As scheduled (NO SUBSTITUTIONS)
 - Material: As scheduled.
 - Finish: As scheduled.
 - Mounting: As scheduled.
- 2.2 Wall and Ceiling Registers**
- Refer to CRUIETS, Registers, and Diffusers Schedule for equipment schedule
 - Manufacturer: As scheduled (NO SUBSTITUTIONS)
 - Material: As scheduled.
 - Finish: As Scheduled.
 - Mounting: Countersunk screw.
- 2.3 Wall and Ceiling Grilles**
- Refer to CRUIETS, Registers, and Diffusers Schedule for equipment schedule
 - Manufacturer: As scheduled (NO SUBSTITUTIONS)
 - Material: As scheduled.
 - Finish: As Scheduled.
 - Mounting: Countersunk screw or lay in depending location.
- PART 3 - EXECUTION**
- 3.1 INSTALLATION**
- Coordinate location and installation with duct installation and installation of other ceiling and wall mounted items.
 - Locate ceiling diffusers, registers, and grilles, as indicated on general construction "reflected ceiling plans," unless otherwise indicated, locate units in center of acoustical ceiling panels.
- END OF SECTION 15855

MATERIAL SCHEDULE

CATEGORY	APPLICATION	ALLOWABLE MATERIAL
EXPOSED SUPPLY		RECT. UNLID OR ROUND AS SHOWN, NO EXPOSED DUCT SEALING MASTIC
		RECTANGULAR NO EXPOSED DUCT SEALING MASTIC
EXPOSED RETURN		RECT. OR ROUND AS SHOWN, UNLID OR INSULATED
		RECT. OR ROUND AS SHOWN, UNLID OR INSULATED
CONCEALED SUPPLY		RECT. OR ROUND AS SHOWN, UNLID OR INSULATED
		RECT. OR ROUND AS SHOWN, UNLID OR INSULATED
CONCEALED RETURN		RECT. OR ROUND AS SHOWN, UNLID OR INSULATED
		RECT. OR ROUND AS SHOWN, UNLID OR INSULATED
CONCEALED, GEN. EXHAUST		RECTANGULAR 12 GA. BLACK IRON W/ WAP OR UL 1979 FACTORY-MANUFACTURED DUCT W/ WAP (SUBMIT SHOP DRAWINGS FOR FACTORY-MANUFACTURED DUCT PRIOR TO ORDERING FOR APPROVAL)
		RECTANGULAR 12 GA. BLACK IRON W/ WAP OR UL 1979 FACTORY-MANUFACTURED DUCT W/ WAP (SUBMIT SHOP DRAWINGS FOR FACTORY-MANUFACTURED DUCT PRIOR TO ORDERING FOR APPROVAL)

HVAC SYMBOLS



- SECTION 15810 - DUCTS AND ACCESSORIES**
- PART 1 - GENERAL**
- 1.1 SECTION REQUIREMENTS**
- Submittals: Product data and smoke detectors.
 - Comply with NFPA 90A for systems serving spaces more than 25,000 cu. ft. in volume or building Types II, IV, and V construction more than 3 stories in height.
 - Comply with NFPA 90B for systems serving spaces in 1 or 2 family dwellings or serving spaces less than 25,000 cu. ft.
 - Comply with NFPA 96 "Ventilation Control and Fire Protection of Commercial Cooking Operations," Chapter 5, "Duct System," for range hood ducts, except single family residential usage, unless otherwise indicated.
 - Comply with UL 181 and UL 181A for ducts and elbows.
 - Testing, Adjusting, and Balancing Agency Qualifications: AABC certified.
- PART 2 - PRODUCTS**
- 2.1 DUCTS**
- Spiral Duct: Spiral Lock Seam, without insulation, G90 galvanized finish, ASTM A-653/3024
 - Basic of Design Manufacturers: Linab SP/RD/40, alternate to the basis of design must be submitted for review.
 - Fittings: Factory produced starting seam construction with internal sealing. Fittings with a major axis of 36" or smaller shall be 20 gauge. Fittings with a major axis of 37"-48" shall be 18 gauge.
 - Galvanized Steel Sheet: Forming steel, ASTM A 653/659M, G90 coating designation, Duct Line, ASTM C 1071, Type II, with an airstream surface coated with a temperature resistant coating. Thickness: 1-1/2 min. Seal: 6.3.
 - Adhesive: ASTM C 916, Type I
 - Mechanical Fasteners: Galvanized steel pin, length as required to penetrate liner plus a 1/8 inch projection maximum into the airstream.
 - Joint and Seam Tape: Comply with UL 181A.
 - Joint and Seam Sealant: Comply with UL 181A.
 - Rectangular Metal Duct Fabrication: Comply with SMACNA's "HVAC Duct Construction Standard" for metal thickness, reinforcing types and intervals, tie rod applications, and joint types and intervals.
- 2.2 ACCESSORIES**
- Volume-Control Dampers: Factory fabricated volume control dampers, complete with required hardware and accessories. Single blade and multiple exposed blade, standard leakage rating, and suitable for horizontal or vertical applications.
 - Fire Dampers: Factory-fabricated fire dampers, complete with required hardware and accessories. UL listed according to UL 555, "Fire Dampers."
 - Flexible Connectors: Flame retardant or noncombustible fabrics, coatings, and adhesives complying with UL 181, Class I.
 - Flexible Ducts: Factory fabricated, insulated, round duct, with an outer jacket enclosing 2 inch thick, class II fire insulation. Re-value: 6.0, around a continuous inner liner.
- PART 3 - EXECUTION**
- 3.1 INSTALLATION**
- Duct System Pressure Class: Construct and install each duct system with 2 inch positive and negative duct pressure classifications.
 - Conceal ducts from view in finished and occupied spaces. Except where noted as exposed.
 - Avoid passing through electrical equipment enclosures and enclosures.
 - Support and connect metal ducts according to SMACNA's "HVAC Duct Construction Standard."
 - Install duct accessories according to applicable portions of details of construction as shown in SMACNA standards.
 - Install liner on all supply and return duct.
 - Install volume control dampers on lined duct with methods to avoid damage to liner and to avoid erosion of duct liner.
 - Install fire and smoke dampers according to manufacturer's UL approved written instructions.
 - Install fusible links in fire dampers.
 - Provide saddle tape at ties for exposed ductwork.
 - TESTING, ADJUSTING, AND BALANCING
 - The owner will supply an independent balance agent to to balance and adjust the HVAC installation. The balance agent will be responsible for any add-on or tie-in changes required.
 - The general contractor is to have trained staff available during the balancing to correct issues noted by the balance agent.
 - The balance agent is to balance airflow within distribution systems, including supplies, branches, and terminals to indicated quantities +/- 10%. The hood exhaust system shall be balanced to a tolerance of +/-10% and the make-up air system to a tolerance of +/-10%.
 - The balance agent is to supply a copy of the balance report to the owner, engineer and general contractor for review.
- END OF SECTION 15810

- SECTION 15900 - HVAC INSTRUMENTATION AND CONTROLS**
- PART 1 - GENERAL**
- 1.1 SECTION REQUIREMENTS**
- Summary: Electronic control sequences for HVAC systems and equipment.
 - Submittals: Shop Drawings detailing operating controls, schedules, and sequences of each item of HVAC equipment and system and Product Data for controllers, sensors, operators, control panels, thermostats, humidistats, actuators, control valves and dampers.
 - System Description: Control systems consists of sensors, indicators, actuators, final control elements, interface equipment, and other apparatus, accessories, required to operate mechanical systems according to sequences of operation indicated and specified.
 - Operation Sequence:
 - Unoccupied Cycle: During unoccupied hours, as set by the Energy Management System, the outside air and return dampers for the HVAC unit close, the exhaust fans are de-energized, and the thermostat set point reverts to 65° F (user adjustable). Upon a call for heating, the reversing valve cycles and places the unit in heating mode to maintain setpoint.
 - Occupied Cycle: During occupied hours, as set by the Energy Management System, the outside air and return dampers open to a minimum set point. The heat pump supply fan and exhaust fans run continuously. Upon a call for heating, the reversing valve cycles and places the unit in heating mode to maintain setpoint. Upon a call for cooling, the heat pump goes into cooling mode.
 - Economizer: When outdoor conditions allow as determined by the heat pump's outdoor air enthalpy sensor, the heat pump shall utilize economizer mode to de-energize the compressor and provide free cooling using 100% outside air.
- PART 2 - PRODUCTS (Not Applicable)**
- PART 3 - EXECUTION**
- 3.1 INSTALLATION**
- Install control wiring concealed, except in mechanical rooms, and according to requirements specified in Division 16 Sections.
- END OF SECTION 15900

- SECTION 15180 - HYDRONIC PIPING**
- PART 1 - GENERAL**
- 1.1 REQUIREMENTS**
- Submittals: Product data for each type of special duty valve.
 - ASME Compliance: ASME B31.10 "Building Services Piping" for materials, products and installation.
- PART 2 - PRODUCTS**
- 2.1 HYDRONIC PIPING - ABOVE GROUND**
- Copper Pipe: Type "L" seamless hard drawn, conforming to standard dimensions, weight & tolerances of ASTM B-42, cast brass or bronze fittings of weight corresponding to the pipe to which they are attached. Use dielectric fittings as manufactured by EPOC or Lectro Pipe Line, Inc. between copper and threaded pipe of dissimilar metal.
 - Copper Pipe: Type "M" with soldered copper fittings.
 - Controlled balancing valves, 2" and Smaller: Bronze body, ball type, 125psig working pressure, 250 degree max. working temperature, full port, soldered or threaded ends. Equipped with memory stop to retain set position.
 - Unions: Copper piping, class 150 bronze unions, soldered.
 - Pipe Hangers & Supports: Conform to MSS SP-58. For pipe sizes less than 2 inches, carbon steel, adjustable swivel, split ring. For 2 inch pipe and greater, carbon steel, adjustable, devis.
- PART 3 - EXECUTION**
- 3.1 INSTALLATION**
- Condenser Water: Type "L" copper with soldered joints.
 - Condensate Drain: Type "L" or type "M" copper with soldered fittings.
 - Install condenser water piping at a uniform grade of 0.2 percent upward in the direction of flow.
 - Reduce pipe sizes with eccentric reducer fitting installed level side up.
 - Provide access to valves & install valves with stem facing up.
 - Anchor piping for proper direction of expansion & contraction.
 - Prepare & test piping according to ASME B 31.3.
 - Flush piping systems with clean water.
- END OF SECTION 15180



CONTRACT NO. 2025-DBH1/PH1-2
 THIS DRAWING IS AN INSTRUMENT OF SERVICE AND IS SOLELY FOR THE PROJECT OF CHIPOTLE MEXICAN GRILL, INC. PERMISSION TO USE OF THIS DOCUMENT IS LIMITED TO THE PROJECT AND SITE IDENTIFIED HEREIN. AGREEMENT WITH CHIPOTLE MEXICAN GRILL, INC.



STORE NO.: 31-5360
 CHIPOTLE 600 THIRD AVE
 600 THIRD AVE
 NEW YORK, NY 10016

CONSTRUCTION SET
 03/13/2025

REV.	DATE	DESCRIPTION
1	02/21/2025	LDL REVIEW SET
1	02/21/2025	LDL COMMENTS
1	02/21/2025	PERMIT-BID SET



PROFESSIONAL IN CHARGE: Anthony J. Scaramiento, P.E.
 DRAWN BY: JCE
 CHECKED BY: JAS

PROJECT NUMBER:
 23096

SHEET TITLE:

MECHANICAL SPECIFICATIONS, SYMBOLS, & GENERAL INFORMATION

SHEET NUMBER:

M-010.00

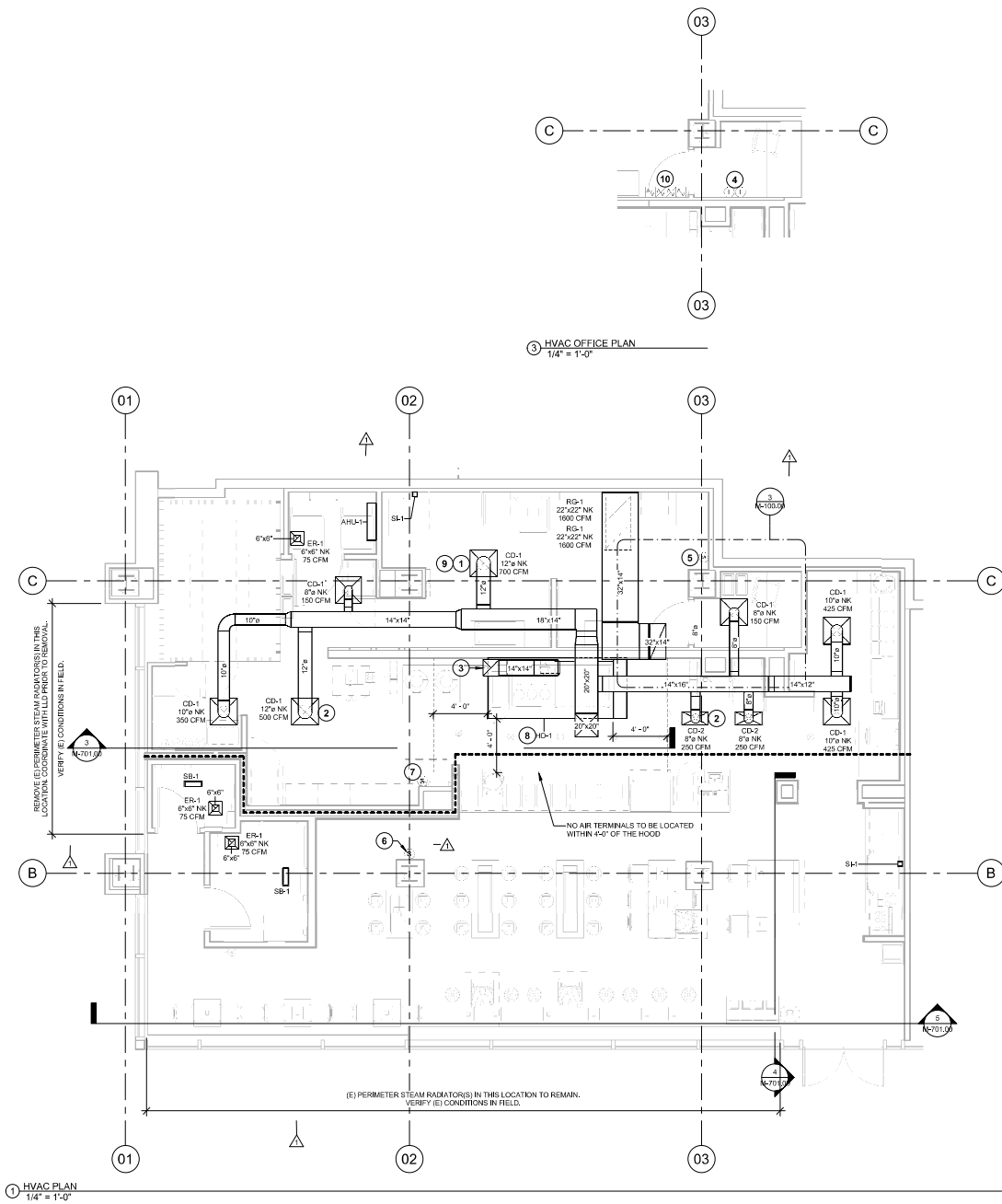
1 OF 19

DOR NOW Filing #: M01180534.52

2025-DBH1/PH1-2

2025-DB#1/PH1-2

KEYNOTES FOR THIS SHEET 1, 2 ETC.	
1	SEE ARCHITECTURAL REFLECTED CEILING PLAN FOR CEILING MOUNTED EQUIPMENT LOCATION, TYPICAL.
2	NO SUPPLY DIFFUSERS SHOULD BE LOCATED CLOSER THAN 4' FROM THE HOOD AND SHOULD BE PERFORATED CEILING DIFFUSERS WITH THE DEFLECTORS REMOVED SO THAT AIR DROPS STRAIGHT DOWN, RATHER THAN POTENTIALLY AFFECTING THE HOOD CAPTURE. THESE CEILING DIFFUSERS SHOULD NOT BE PLACED OVER EQUIPMENT OR PREP SURFACES, TYPICAL.
3	14"14" DUCT UP FROM HOOD THROUGH PLATFORM TO PCU, EF-1 AND THEN EXHAUST LOUVER COMPLIANT WITH NFPA 96. PROVIDE RADJUSED ELBOWS WITH AN INSIDE RADIUS OF 0.5W AT ELBOWS IN GREASE DUCT. PROVIDE DUCT CLEANOUT ACCESS DOOR AT ALL CHANGES IN DIRECTION AND AT LINEAR INTERVALS PER LOCAL CODE. SEE 1M-101 FOR CONTINUATION.
4	INSTALL GRIDPOINT THERMOSTATS FURNISHED BY TEMS FOR WSHP-1 AND WSHP-2 AT THIS LOCATION AT 48" AFF. COORDINATE WITH ELECTRICAL SWITCHING IN THIS AREA. PROVIDE WIRING AS SHOWN IN DETAIL 8/E710. LABEL THERMOSTAT WITH CORRESPONDING UNIT.
5	INSTALL GRIDPOINT ZONE SENSOR MODULE FURNISHED BY TEMS FOR WSHP-1 AT THIS LOCATION AT 72" AFF DIRECTLY TO WALL (NO JUNCTION BOX). COORDINATE LOCATION WITH EQUIPMENT. PROVIDE WIRING AS SHOWN IN DETAIL 8/E-710. LABEL SENSOR WITH CORRESPONDING UNIT.
6	INSTALL GRIDPOINT ZONE SENSOR MODULE FURNISHED BY TEMS FOR WSHP-2 AT THIS LOCATION AT 66" AFF DIRECTLY TO WALL (NO JUNCTION BOX). COORDINATE LOCATION WITH EQUIPMENT. PROVIDE WIRING AS SHOWN IN DETAIL 8/E710. LABEL SENSOR WITH CORRESPONDING UNIT.
7	INSTALL REMOTE TEMPERATURE SENSOR FOR HOOD HD-1 AT THIS LOCATION AT 72" AFF. COORDINATE LOCATION WITH EQUIPMENT. PROVIDE (2) #18 G. THERMISTOR CABLE FROM TEMPERATURE SENSOR TO HOOD CONTROL PANEL. LABEL SENSOR "HD-1".
8	INSTALL KITCHEN HOOD, HD-1. SUPPORT HOOD PER MANUFACTURER'S INSTALLATION INSTRUCTIONS AND AS DETAILED IN THE ARCHITECTURAL AND STRUCTURAL DRAWINGS. INSTALL HOOD ACCORDING TO THE REQUIREMENTS OF ITS LISTING, IN COMPLIANCE WITH NFPA 96. THE BUILDING CODE, AND AUTHORITIES HAVING JURISDICTION. HOOD SHALL HAVE AN INTEGRAL DUCT COOLAR TEMPERATURE SENSOR TO AUTOMATICALLY ENERGIZE THE EXHAUST FAN IF COOKING TEMPERATURES ARE DETECTED. EXHAUST DUCT SYSTEM TO BE WELDED OR FACTORY-MANUFACTURED WATER AND AIR TIGHT. INSTALL CLEANOUTS PER CODE AND AS SHOWN. INSTALL HOOD PER DETAILS 4M-700, 2M-701, AND 3M-701. CHIPOTLE WILL PROVIDE AN INDEPENDENT TESTING AGENCY FOR TESTING THE INTEGRITY OF THE GREASE DUCT SYSTEM.
9	PROVIDE SUPPLY DIFFUSER CONNECTION TO SUPPLY SYSTEM PER DETAIL 8/M-700. TYPICAL.
10	CONTRACTOR TO FURNISH & INSTALL AUDIO/VISUAL REMOTE SMOKE DETECTOR ANNUNCIATOR WITH REMOTE KEY OPERATED RESET. WIRE A UNIT BACK TO EACH SMOKE DETECTOR. MOUNT UNIT 60" AFF. LABEL ANNUNCIATOR WITH CORRESPONDING UNIT. TYPICAL.



Consultant
Polaris
 Consulting Engineers, P.C.
 214 W. Main Street, Suite 208
 Moorestown, NJ 08057
 (856) 778-5400

COPYRIGHT 2023
 THIS DRAWING IS AN INSTRUMENT OF SERVICE AND AS SUCH REMAINS THE PROPERTY OF CHIPOTLE MEXICAN GRILL, INC. PERMISSION FOR USE OF THIS DOCUMENT IS LIMITED AND CAN BE EXTENDED ONLY BY WRITTEN AGREEMENT WITH CHIPOTLE MEXICAN GRILL, INC.



STORE NO.: 31-5360
 CHIPOTLE 600 THIRD AVE
 600 THIRD AVE.
 NEW YORK, NY 10016

CONSTRUCTION SET
 03/13/2025

REV.	DATE	DESCRIPTION
1	02/21/2025	LLD COMMENTS
	02/21/2025	PERMIT-BID SET

PROFESSIONAL SEAL

 Anthony J. Scammarone, P.E.
 No. 14486, State of New Jersey
 02/21/2025

PROFESSIONAL IN CHARGE: Anthony J. Scammarone, P.E.
 DRAWN BY: RCE
 CHECKED BY: JAS

PROJECT NUMBER:
 23096

SHEET TITLE:
 1st FLOOR HVAC PLANS

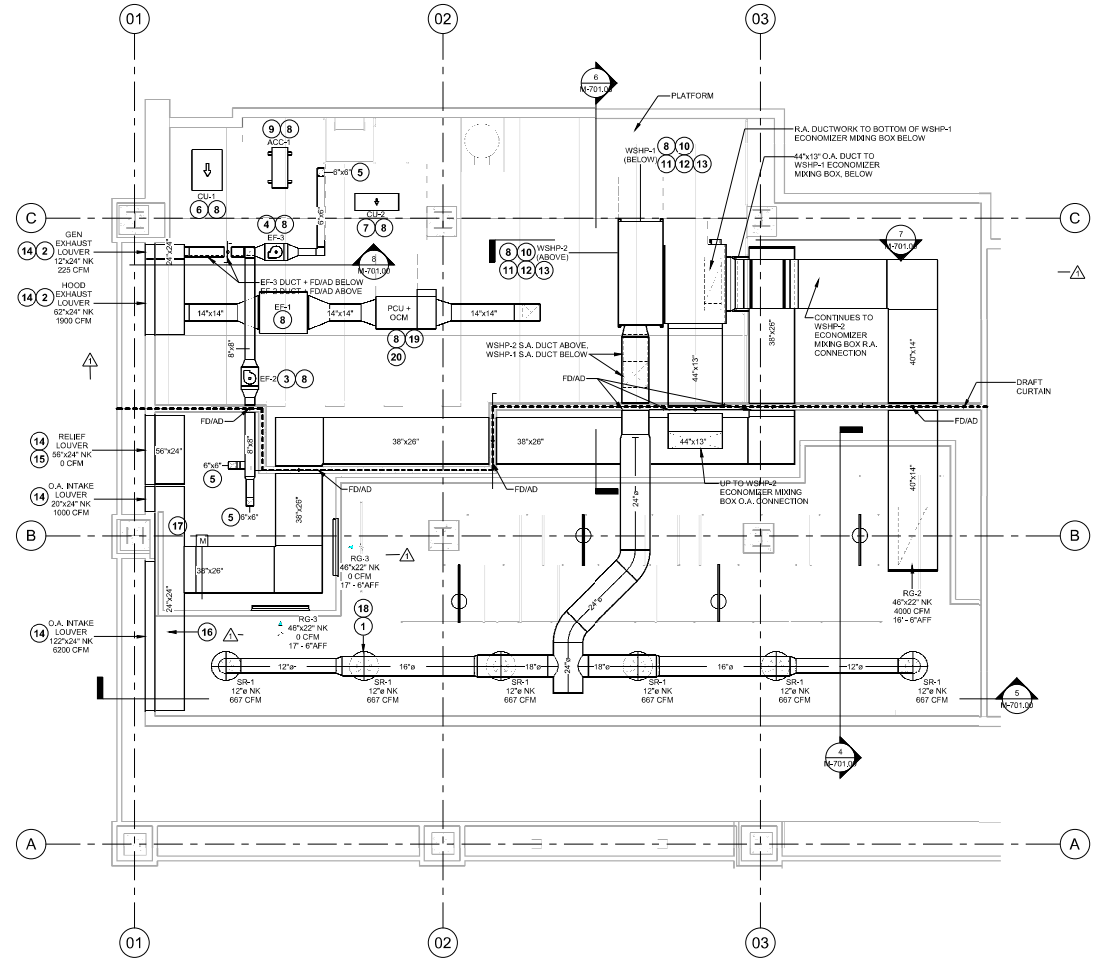
SHEET NUMBER:
 M-100.00

2 OF 19

DOR NOW Filing #: M03180574.52

KEYNOTES FOR THIS SHEET 1, 2 ETC.

- 1 PAINT DUCTWORK VISIBLE THROUGH DINING ROOM SUPPLY REGISTERS BLACK, TYPICAL.
- 2 10'-0" MIN. CLEARANCE FROM OUTER EDGE OF EXHAUST LOUVER TO FRESH AIR INTAKES, TYPICAL.
- 3 8/8 DUCT TO TRANSITION TO EF-2 INLET CONNECTION. SEE DETAIL 8/M-700.
- 4 6/6 DUCT TO TRANSITION TO EF-3 INLET CONNECTION. SEE DETAIL 8/M-700.
- 5 DUCT DOWN, SEE 1/M-100 FOR CONTINUATION.
- 6 INSTALL REMOTE CONDENSING UNIT FOR WALK-IN COOLER ON PLATFORM AS DETAILED IN THE ARCHITECTURAL AND STRUCTURAL DRAWINGS. INSTALL REFRIGERANT LINE SET, THERMOSTATIC EXPANSION VALVE, SOLENOID VALVE, TEMPERATURE CONTROL, SIGHT GLASS, FILTER DRIER, PRESSURE CONTROL, LOW AMBIENT CONTROLS, AND WEATHERPROOF HOUSING. TRAP AND SLOPE REFRIGERANT LINES PER MANUFACTURER'S RECOMMENDATIONS. SEAL PIPING PENETRATIONS THROUGH RATED ASSEMBLIES. INSTALLATION SHALL COMPLY WITH ASHRAE/ANSI STANDARD 15. INSTALL THE REFRIGERANT LINE SET TO WITHIN 3'-0" OF THE CONDENSING UNIT. CUT 2-1/2" HOLE IN WALK-IN COOLER ROOF FOR REFRIGERANT LINE SET AND SEAL PER THE COOLER MANUFACTURER'S INSTALLATION INSTRUCTIONS AFTER LINE SET IS INSTALLED.
- 7 INSTALL REMOTE CONDENSER FOR ICE MACHINE ON PLATFORM AS DETAILED IN THE ARCHITECTURAL AND STRUCTURAL DRAWINGS. INSTALL REFRIGERANT LINE SET, THERMOSTATIC EXPANSION VALVE, SOLENOID VALVE, TEMPERATURE CONTROL, SIGHT GLASS, FILTER DRIER, PRESSURE CONTROL, LOW AMBIENT CONTROLS AND WEATHERPROOF HOUSING. TRAP AND SLOPE REFRIGERANT LINES PER MANUFACTURER'S RECOMMENDATIONS. SEAL PIPING PENETRATIONS THROUGH RATED ASSEMBLIES. INSTALLATION SHALL COMPLY WITH ASHRAE/ANSI STANDARD 15. INSTALL THE REFRIGERANT LINE SET TO WITHIN 3'-0" OF THE REMOTE CONDENSER. IF REFRIGERANT PIPING TO ICE MACHINE IS EXPOSED TO PUBLIC VIEW, CONCEAL WITHIN A STAINLESS STEEL SHROUD AS SHOWN IN THE ARCHITECTURAL DRAWINGS.
- 8 INSTALL EQUIPMENT PER MANUFACTURER'S INSTALLATION INSTRUCTIONS AND AS DETAILED IN THE ARCHITECTURAL AND STRUCTURAL DRAWINGS.
- 9 INSTALL REMOTE CONDENSER FOR TRASH ROOM SPLIT SYSTEM ON PLATFORM AS DETAILED IN THE ARCHITECTURAL AND STRUCTURAL DRAWINGS. INSTALL REFRIGERANT LINE SET, THERMOSTATIC EXPANSION VALVE, SOLENOID VALVE, TEMPERATURE CONTROL, SIGHT GLASS, FILTER DRIER, PRESSURE CONTROL, LOW AMBIENT CONTROLS AND WEATHERPROOF HOUSING. TRAP AND SLOPE REFRIGERANT LINES PER MANUFACTURER'S RECOMMENDATIONS. SEAL PIPING PENETRATIONS THROUGH RATED ASSEMBLIES. INSTALLATION SHALL COMPLY WITH ASHRAE/ANSI STANDARD 15. INSTALL THE REFRIGERANT LINE SET TO WITHIN 3'-0" OF THE REMOTE CONDENSER.
- 10 CONNECT COND. WATER SUPPLY & RETURN PIPING FROM WSHP UNIT TO (E) MAINS. SEE DETAILS 3/M-102 & 4/M-102 FOR ADDITIONAL INFORMATION. VERIFY CONNECTION POINTS IN FIELD. PROVIDE BTU METER, COORDINATE REQUIREMENTS WITH LL PRIOR TO ORDERING & INSTALLATION.
- 11 PUMP CONDENSATE PIPING FROM WSHP UNIT TO FLOOR SINK BELOW DML. DISCHARGE VIA AIR GAP.
- 12 PROVIDE BTU METER FOR CONDENSER WATER CONNECTIONS TO (E) MAINS. VERIFY BTU METER REQUIREMENTS WITH LANDLORD PRIOR TO INSTALLING.
- 13 PROVIDE PUMP ON CONDENSER WATER RETURN PIPING PRIOR TO CONNECTION TO MAIN TO OVERCOME BUILDING PRESSURE. SEE PUMP SCHEDULE FOR FURTHER INFORMATION.
- 14 PROVIDE LOUVER, SIZED AS SHOWN, AND 2" DEEP INSULATED, GALVANIZED STEEL PLENUM BOX ON REAR OF LOUVER. VERIFY (E) LOUVER BAND HEIGHT & STRUCTURAL KICKERS IN FIELD PRIOR TO ORDERING. NOTCH PLENUM BOX AROUND (E) STRUCTURAL KICKERS, OR SPLIT SINGLE LOUVER INTO (2) LOUVERS, AS REQUIRED, VERIFY (E) CONDITIONS IN FIELD.
- 15 RELIEF AIR PLENUM BOX TO BE OPEN-ENDED WITH 80% FREE AREA MESH SCREENING. PROVIDE GRAVITY RELIEF DAMPER PRIOR TO SCREENING.
- 16 PLENUM BOX TO BE CONTINUOUS BEHIND O.A. LOUVERS. BLANK OFF SECTION BEHIND COLUMN BUILD OUT AS SHOWN.
- 17 CONNECT MOTORIZED DAMPER TO UNIT OPERATION. DAMPER SHALL OPEN TO MINIMUM SETTING PER O.A. VALUE LISTED IN AIR BALANCE SCHEDULE DURING OCCUPIED HOURS. OPEN TO FULL DURING ECONOMIZER OPERATION, AND CLOSE DURING UNOCCUPIED PERIODS. PROVIDE ACCESS PANEL IN CEILING BELOW, COORDINATE WITH ARCHITECT.
- 18 ADJUST SUPPLY REGISTERS HORIZONTAL & VERTICAL THROW SO THAT NO DRAFTS FELT IN THE DINING ROOM. TYPICAL OF 6.
- 19 SEE M-500 SERIES FOR ADDITIONAL PCU INSTALLATION REQUIREMENTS. COORDINATE LOCATION OF DETERGENT TANK & HM CONTROLLER WITH CMG OPERATIONS TEAM PRIOR TO INSTALL.
- 20 PCU + ODOR CONTROL MODULE (OCM) TO BE MOUNTED ON MANUFACTURER PROVIDED SKID.



1 HVAC PLATFORM / CEILING PLAN
1/4" = 1'-0"

COPYRIGHT 2025
THIS DRAWING IS AN INSTRUMENT OF SERVICE AND AS SUCH REMAINS THE PROPERTY OF CHIPOTLE MEXICAN GRILL, INC. PERMISSION FOR USE OF THIS DOCUMENT IS LIMITED AND CAN BE EXTENDED BY PER WRITTEN AGREEMENT WITH CHIPOTLE MEXICAN GRILL, INC.



CHIPOTLE MEXICAN GRILL, INC.
PO BOX 30208
COLUMBIA, OH 43208-2568
TELEPHONE: 614.333.8300
INTERNET: WWW.CHIPOTLE.COM

STORE NO.: 31-5360
CHIPOTLE 600 THIRD AVE
600 THIRD AVE.
NEW YORK, NY 10016

CONSTRUCTION SET
03/13/2025

REV.	DATE	DESCRIPTION
1	02/21/2025	LLD REVIEW SET
	02/21/2025	LLD COMMENTS
	02/21/2025	PERMIT-BID SET



Anthony J. Scaramiento, P.E.
No. 100000000

PROFESSIONAL IN CHARGE: Anthony J. Scaramiento, P.E.

DRAWN BY: ACE

CHECKED BY: JAS

PROJECT NUMBER:
23096

SHEET TITLE:

HVAC PLATFORM &
HIGH CEILING PLAN

SHEET NUMBER:

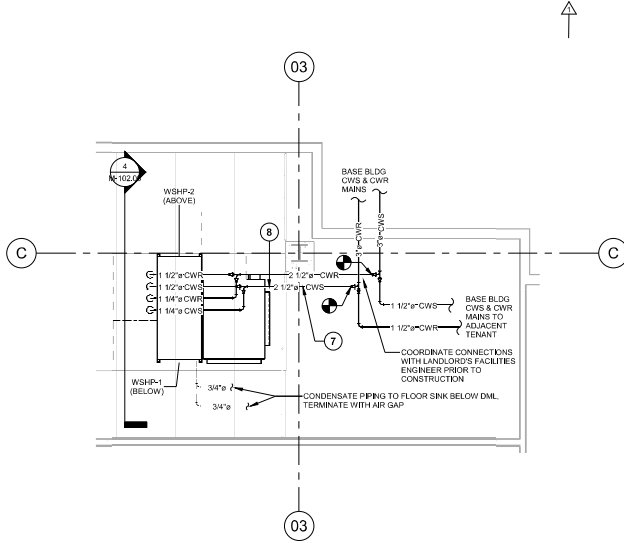
M-101.00

3 OF 19

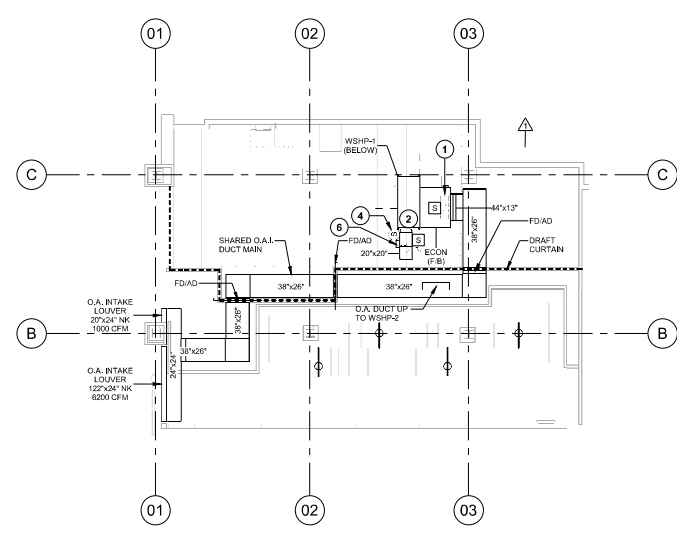
DOR NOW Filing #: M01180574.52

2025-DB#1/PH1-2

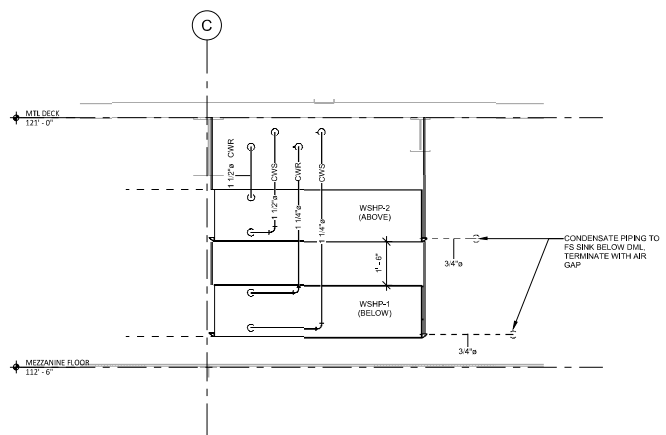
KEYNOTES FOR THIS SHEET 1, 2 ETC.	
1	32/14 DUCT UP FOR TRANSITION TO WSHP-1 RETURN CONNECTION ON BOTTOM (B) OF AIR-SIDE ECONOMIZER. SEE 1/M-100 FOR CONTINUATION. WSHP-1 SHALL HAVE A FIELD PROVIDED SMOKE DETECTOR MOUNTED IN THE RETURN AIR STREAM PRIOR TO ANY MIXING OF AIR. INTERLOCK SMOKE DETECTOR TO WSHP-1 OPERATION.
2	20/20 DUCT FOR TRANSITION TO WSHP-1 SUPPLY CONNECTION. SEE 1/M-100 FOR CONTINUATION. WSHP-1 SHALL HAVE A FIELD PROVIDED SMOKE DETECTOR MOUNTED IN THE SUPPLY AIR STREAM. INTERLOCK SMOKE DETECTOR TO WSHP-1 OPERATION.
3	22/22 DUCT FOR TRANSITION TO WSHP-2 SUPPLY CONNECTION. WSHP-2 SHALL HAVE A FIELD PROVIDED SMOKE DETECTOR MOUNTED IN THE SUPPLY AIR STREAM. INTERLOCK SMOKE DETECTOR TO WSHP-2 OPERATION.
4	INSTALL GRIDPOINT SUPPLY PROBE FURNISHED BY TEMS FOR WSHP-1 IN THE SUPPLY DUCTWORK UPSTREAM FROM THE FIRST BRANCH CONNECTION. PROVIDE WIRING AS SHOWN IN DETAIL 8/E710.
5	INSTALL GRIDPOINT SUPPLY PROBE FURNISHED BY TEMS FOR WSHP-2 IN THE SUPPLY DUCTWORK UPSTREAM FROM THE FIRST BRANCH CONNECTION. PROVIDE WIRING AS SHOWN IN DETAIL 8/E710.
6	INSTALL REME HALO AIR PURIFIER FURNISHED BY TUV IN WSHP SUPPLY DUCTWORK OF WSHP-1 & WSHP-2 PER DETAIL 8/M-700. SEE ELECTRICAL DRAWINGS FOR POWER CONNECTION INFORMATION. INSTALL UV WARNING STICKERS ON FACE OF ENCLOSURE PER DETAIL AND ON ANY WSHP ACCESS DOOR(S) THROUGH WHICH THE REME HALO WOULD BE VISIBLE IF OPENED.
7	PROVIDE NEW INLINE PUMP. SEE SCHEDULE AND DETAIL FOR MORE INFORMATION.
8	INSTALL BYPASS WITH BALANCING VALVE BETWEEN CONDENSER WATER SUPPLY AND CONDENSER WATER RETURN MAINS.
9	40/14 DUCT FOR TRANSITION TO WSHP-2 RETURN CONNECTION ON SIDE (S) OF AIR-SIDE ECONOMIZER. SEE 1/M-100 FOR CONTINUATION. WSHP-2 SHALL HAVE A FIELD PROVIDED SMOKE DETECTOR MOUNTED IN THE RETURN AIR STREAM PRIOR TO ANY MIXING OF AIR. INTERLOCK SMOKE DETECTOR TO WSHP-2 OPERATION.



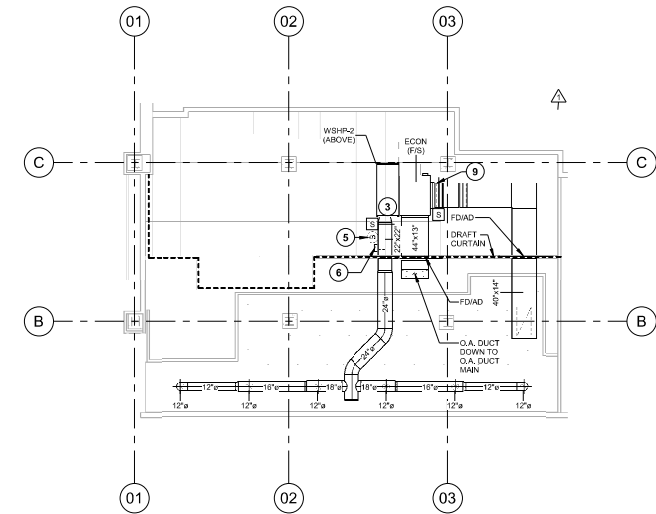
① HVAC PIPING PLATFORM / CEILING PLAN
1/4" = 1'-0"



① HVAC PLATFORM PLAN - WSHP-1
1/8" = 1'-0"



② HVAC - WSHP PIPING ELEVATION
1/2" = 1'-0"



② HVAC PLATFORM PLAN - WSHP-2
1/8" = 1'-0"

Polaris
Consulting Engineers, P.C.
214 W. Main Street, Suite 208
Moorestown, NJ 08057
(856) 778-5400

COPYRIGHT 2023
THIS DRAWING IS AN INSTRUMENT OF SERVICE AND AS SUCH REMAINS THE PROPERTY OF CHIPOTLE MEXICAN GRILL, INC. PERMISSION FOR USE OF THIS DOCUMENT IS LIMITED AND CAN BE EXTENDED ONLY BY WRITTEN AGREEMENT WITH CHIPOTLE MEXICAN GRILL, INC.



CHIPOTLE MEXICAN GRILL, INC.
PO BOX 302068
COLUMBIA, OH 43208-2068
TELEPHONE: 614.338.3300
INTERNET: WWW.CHIPOTLE.COM

STORE NO.: 31-5360
CHIPOTLE 600 THIRD AVE
600 THIRD AVE.
NEW YORK, NY 10016

CONSTRUCTION SET
03/13/2025

REV.	DATE	DESCRIPTION
1	02/21/2025	ILD COMMENTS
	02/21/2025	PERMIT-BID SET

PROFESSIONAL SEAL

Anthony J. Scaramiento, P.E.
No. 36869

PROFESSIONAL IN CHARGE: Anthony J. Scaramiento, P.E.
DRAWN BY: RCE
CHECKED BY: JAS

PROJECT NUMBER:
23096

SHEET TITLE:
INDIVIDUAL WSHP
DUCTING PLANS,
WSHP PIPING PLAN &
WSHP PIPING SECTION

SHEET NUMBER:
M-102.00

4 OF 19

DOR NOW Filing #: M01180574.52

2025-DB#1/PH1-2

HOOD SHOP DRAWING PRODUCED BY
MANUFACTURER - FOR REFERENCE ONLY

FIRE SYSTEM INFORMATION - JOB#2176657

FIRE SYSTEM NO.	TAG	TYPE	SIZE	MAX FP	DESIGN FP	INSTALLATION SYSTEM	LOCATION OR NOTES
1		TANK FS	4.5/4.0	40	88	FIRE CABINET LEFT	LEFT, HEED 1

FIRE SYSTEM PARTS LIST KEY

FIRE SYSTEM TAG	KEY NUMBER - PART DESCRIPTION	QTY BY FACTORY	QTY BY DIST
1	0 - TANK FIRE SUPPRESSION POST-DISCHARGE PROCEDURE UTILITY CABINET LABEL SHEET.	1	0
	0 - TANK FIRE SUPPRESSION MAINTENANCE GUIDE UTILITY CABINET LABEL SHEET.	1	0
	0 - 12-FE8081-38144-21-360 DUCT FIRE THERMOSTAT WITH 12 FOOT WIRE LEADS. NO. CLOSE ON TEMP RISE AT 360°F. (40234380)	1	0
	0 - 0 = 38-0002 ZINC SEAL - 1/2" DIA.	1	0
	0 - 0 = 4429K53 1/2" MALE NPT TO 1/2" FEMALE NPT ELBOW, BRASS.	2	0
	0 - 0 = 4429K52 1/2" X 1/4" BRASS REDUCING BUSHING.	1	0
	0 - 0 = 79205 1/2" 90 DEG PRESS ELBOW WITH 1/2" NPT FEMALE CONNECTION, VIEGA.	1	0
	0 - 0 = 79500 1/2" X 1/2" 90 DEG PRESS TEE X 1/2" NPT FEMALE CONNECTION, VIEGA.	2	0
	0 - 0 = 87-30041-001 SECONDARY ACTUATOR VALVE, CSVA3 - SINGLE ACTUATING, REQUIRES PRIMARY RELEASE ACTUATOR, TANK FIRE SUPPRESSION.	1	0
	0 - 0 = 87-30043-001 HOSE, SECONDARY ACTUATOR HOSE, 7'3" BRAIDED STAINLESS STEEL, TANK FIRE SUPPRESSION.	1	0
	0 - 0 = 87-30001-001 TANK - PRESSURIZED TANK USED FOR TANK FIRE SUPPRESSION.	2	0
	0 - 0 = 87-30035-001 PREPARED ACTUATOR KIT (PAK) - ACTUATOR AND RELEASE SOLENOID ASSEMBLY, ONE NEEDED FOR FIRE SYSTEM SUPERVISED, TANK FIRE SUPPRESSION.	1	0
	0 - 0 = 87-30052-001 HARDWARE, XVA BELTS, TANK FIRE SUPPRESSION.	8	0
	0 - 0 = 80224K52C 90 DEG PRESS 1/2" PRESS X PRESS 90 ELBOW ID.	6	0
	0 - 0 = 80224K52C 90 DEG PRESS 1/2" PRESS TEE LB.	2	0
	0 - 0 = 8069415 HARDWARE, BATAWOLUCK LOCKING BRACKET SQUARE NUTS 5/8" ZINC, TANK FIRE SUPPRESSION.	4	0
	0 - 0 = 4029432 JUNCTION BOX FOR MANUAL PULL STATION, 1.5" DEEP BACK BOX, RED COLOR.	1	0
	0 - 0 = 43140 1/2" NPT SCHWABER VALVE AND CAP, JB INHER. REFS. 1/4" FLARE X 1/4" NPT HALF UNDER USED ON TANK SERVICE HOSE.	1	0
	0 - 0 = 81145 3/8" BLACK IRON 90 FLL.	2	0
	0 - 0 = 041062C BEECHWAGE, 20-PIN TANK LOCKING PLATE FOR FIRE SYSTEM TANK INSTALLATION IN UTILITY CABINET, TANK FIRE SUPPRESSION.	2	0
	0 - 0 = TANK STRAP TANK STRAP - USED FOR TANK FIRE SUPPRESSION.	6	0
	0 - 0 = TIE-BEYOND-BRACKET TANK BRACKET FOR FIRE SYSTEM TANK INSTALLATION IN UTILITY CABINETS, TANK FIRE SUPPRESSION.	2	0
	0 - 0 = WK-200950-000 DISCHARGE ADAPTER, TANK FIRE SUPPRESSION.	2	0
	15 - 15 = 79205 1/2" X 3/2" NPT MALE ADAPTER, VIEGA.	6	0
	12 - 12 = 18 1/2 NUT/FLG - TANK PROTECTION APPLIANCE COVERAGE NOZZLE CONCLUDES METAL BLOW OFF CAP, LANTARNO, USED WITH CHROME-PLATED PIPE).	6	0
	25 - 25 = 054-5/8 OUNCE SEAL - 3/8" O.D.	6	0
	34 - 34 = 4004433 3/4" DIA SINGLE ACTION MANUAL ACTUATION DEVICE (PUSH/PULL STATION) WITH PROTECTIVE COVER, ONE (1) NORMALLY OPEN CONTACT, RED COLOR.	1	0

↑

REVISIONS	
NO.	DESCRIPTION

CAPTIVE FIRE

Highwoods Group
www.captivefire.com

4815 Papanogian Drive, Raleigh, NC 27615-7046 | 919.877.1100 | 4815 Papanogian Drive, Raleigh, NC 27615-7047 | 919.877.1100 | www.captivefire.com

CHIPOTLE 600 THIRD AVE NY #5360 RI
600 3rd Avenue,
New York, NY, 10016

DATE: 10/11/2024
DWG.#: 7176657
DRAWN BY: JPB: 40
SCALE: 3/4" = 1'-0"
MASTER DRAWING

SHEET NO. 3

Consultant
Polaris
Consulting Engineers, P.C.
214 W. Main Street, Suite 208
Moorestown, NJ 08057
(856) 778-5400

COPYRIGHT 2023
THIS DRAWING IS AN INSTRUMENT OF SERVICE AND IS THE PROPERTY OF POLARIS CONSULTING ENGINEERS, P.C. PERMISSION FOR USE OF THIS DOCUMENT IS LIMITED TO THE PROJECT AND SITE SPECIFICALLY IDENTIFIED HEREIN. ANY OTHER USE WITHOUT THE WRITTEN AGREEMENT WITH POLARIS CONSULTING ENGINEERS, P.C. IS PROHIBITED.



STORE NO.: 31-5360
CHIPOTLE 600 THIRD AVE
600 THIRD AVE,
NEW YORK, NY 10016

CONSTRUCTION SET
03/13/2025

REV.	DATE	DESCRIPTION
1	02/21/2025	ILD COMMENTS
	02/21/2025	PERMIT-BID SET



PROFESSIONAL IN CHARGE: Anthony J. Scalomanno, P.E.
DRAWN BY: JPB
CHECKED BY: JAS

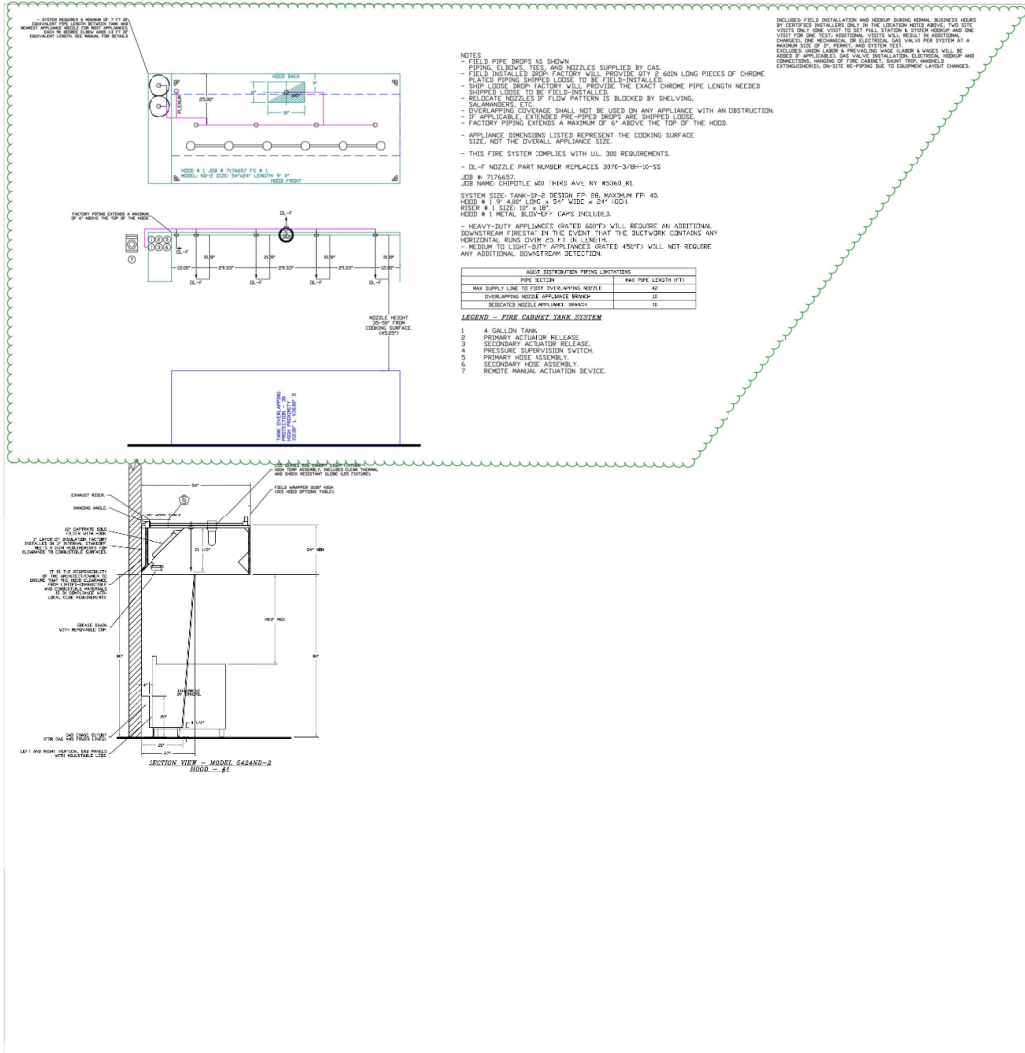
PROJECT NUMBER:
23086

SHEET TITLE:
CAPTIVEAIRE
DRAWINGS

SHEET NUMBER:
M-402.00
6 OF 19

DOR NOW Filing #: M03180574-52

HOOD SHOP DRAWING PRODUCED BY
MANUFACTURER - FOR REFERENCE ONLY



REVISIONS	
NO.	DATE

CAPTIVE FIRE
Highwoods Group
4641 Princeton Park Rd., Raleigh, NC 27616 PHONE: (919) 875-4400 FAX: (919) 875-0757 EMAIL: info@captivewire.com

CHIPOTLE 600 THIRD AVE NY #5360_R1
600 3rd Avenue,
New York, NY, 10016

DATE: 2/1/2024
DWG.#: 7176657

DRAWN BY: JMR-40
SCALE: 1/2" = 1'-0"
MASTER DRAWING

SHEET NO.
3

Consultant
Polaris
Consulting Engineers, P.C.
214 W. Main Street, Suite 208
Moorestown, NJ 08057
(856) 778-5400

COPYRIGHT 2023
THIS DRAWING IS AN INSTRUMENT OF SERVICE AND AS SUCH REMAINS THE PROPERTY OF CAPTIVE FIRE GRILL, INC. PERMISSION FOR USE OF THIS DOCUMENT IS LIMITED AND CAN BE EXTENDED ONLY BY WRITTEN AGREEMENT WITH CAPTIVE FIRE GRILL, INC.



STORE NO.: 31-5360
CHIPOTLE 600 THIRD AVE
600 THIRD AVE.
NEW YORK, NY 10016

CONSTRUCTION SET
03/13/2025

REV.	DATE	DESCRIPTION
1	02/21/2025	ILD COMMENTS
	02/21/2025	PERMIT-BID SET



PROFESSIONAL IN CHARGE: Anthony J. Scalomanno, P.E.
DRAWN BY: JCE
CHECKED BY: JAS

PROJECT NUMBER:
23086

SHEET TITLE:
CAPTIVEAIRE
DRAWINGS

SHEET NUMBER:
M-403.00
7 OF 19

DOR NOW Filing #: M01180574-52

HOOD SHOP DRAWING PRODUCED BY
MANUFACTURER - FOR REFERENCE ONLY

EXHAUST FAN INFORMATION - JOB#7170657

FAN UNIT NO	TAG	QTY	FAN UNIT MODEL #	MANUFACTURER	CFM	ESP	RPK	MOTOR ENCL	HP	BHP	PHASE	VOLT	FLA	WEIGHT (LBS)	SDNES
1	EF-1	1	SIF300	CAPTIVEAIRE	1900	2.444	1845	TEFC PREMIUM	0.000	1.7860	3	200	5.7	366	23.9
2	EF-2	1	CFA 830CA	CAPTIVEAIRE	350	0.00	545	GENERAL PURPOSE	0.070	0.5680	1	115	1.8	88	N/A
3	EF-3	1	CFA 103CA	CAPTIVEAIRE	750	0.00	475	GENERAL PURPOSE	0.116	0.5460	1	115	1.1	32	N/A

FAN OPTIONS

FAN UNIT NO	TAG	QTY	DESCRIPTION
1	EF-1	1	SIF - STAINLESS STEEL HOUSING CONSTRUCTION
		1	SIF - HORIZONTAL OVER-HEAD MOUNT - PRE-INSTALLED MOUNTS (11-36)
		1	HANGING SPEED VIBRATION ISOLATORS (SILEN UP 4) FOR INDOOR USE WITH SQUARE IN-LINE FANS (PREFERRED)
		1	SIF18 - STRAIGHT DISCHARGE FOR SIF18 SQUARE DUCT CONNECTION
2	EF-2	1	SIF18 - INLET - SQUARE DUCT CONNECTION
		1	2 YEAR PARTS WARRANTY
		1	STRAIGHT THROUGH DISCHARGE - ASSEMBLY - CFA IN-LINE DECS NOT INCLUDE IN-LINE ADAPTER KIT
		1	RDI- RADIATION DAMPER
3	EF-3	1	CEILING VIBRATION HANGERS
		1	FAN CONTROL - 3 AMP FAN MOUNTED SPEED CONTROL FOR CFA CEILING FANS
		1	2 YEAR PARTS WARRANTY
		1	STRAIGHT THROUGH DISCHARGE - ASSEMBLY - CFA IN-LINE DECS NOT INCLUDE IN-LINE ADAPTER KIT

FAN ACCESSORIES

FAN UNIT NO	TAG	EXHAUST SUPPLY
		GREASE TRAY GRAVITY DAMPER WALL MOUNT SIDE DISCHARGE GRAVITY DAMPER MOTORIZED DAMPER WALL MOUNT
1	EF-1	
2	EF-2	
3	EF-3	

↑

REVISIONS

NO.	DESCRIPTION	DATE

CAPTIVEAIRE

Highwoods Group

4641 Phoenician Park Rd., Raleigh, NC 27616 PHONE: (919) 875-1203 FAX: (919) 875-0777 EMAIL: mfg@captivaire.com

CHIPOTLE 600 THIRD AVE NY #5360_R1
600 3rd Avenue,
New York, NY, 10016

DATE: 12/1/2024
DWG.#: 7176657
DRAWN BY: JMB-40
SCALE: 3/4" = 1'-0"
MASTER DRAWING

SHEET NO.
4

Polaris
Consulting Engineers, P.C.
214 W. Main Street, Suite 208
Moorestown, NJ 08057
(856) 778-5400

COPYRIGHT 2023
THIS DRAWING IS AN INSTRUMENT OF SERVICE AND AS SUCH REMAINS THE PROPERTY OF CHIPOTLE MEXICAN GRILL, INC. PERMISSION FOR USE OF THIS DOCUMENT IS LIMITED AND CAN BE EXTENDED ONLY BY WRITTEN AGREEMENT WITH CHIPOTLE MEXICAN GRILL, INC.



STORE NO.: 31-5360
CHIPOTLE 600 THIRD AVE
600 THIRD AVE.
NEW YORK, NY 10016

CONSTRUCTION SET
03/13/2025

REV.	DATE	DESCRIPTION
1	02/21/2025	ILLD COMMENTS
1	02/21/2025	PERMIT-BID SET



PROFESSIONAL IN CHARGE: Anthony J. Scaramiento, P.E.
DRAWN BY: JCE
CHECKED BY: JAS

PROJECT NUMBER:
23086

SHEET TITLE:
CAPTIVEAIRE
DRAWINGS

SHEET NUMBER:
M-404.00

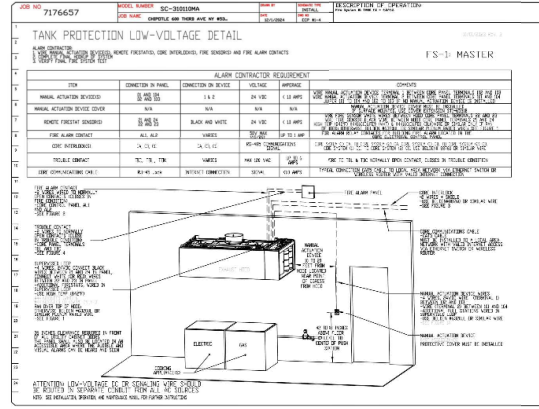
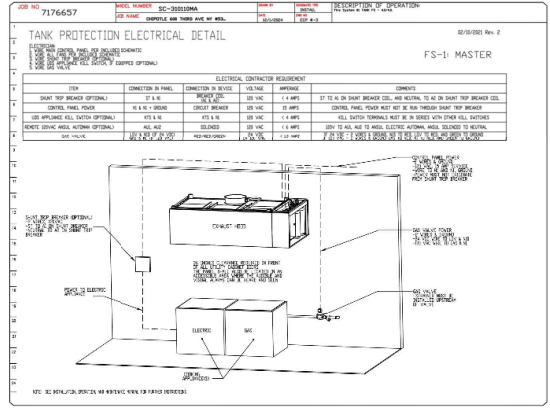
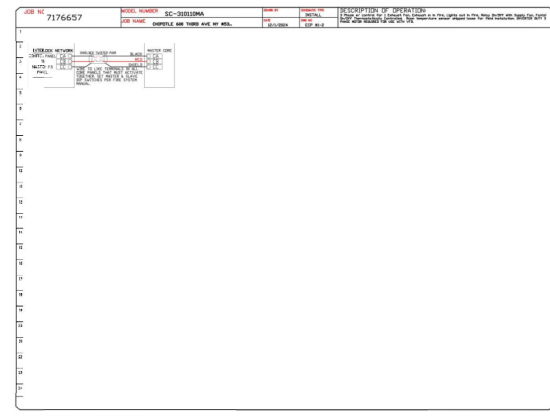
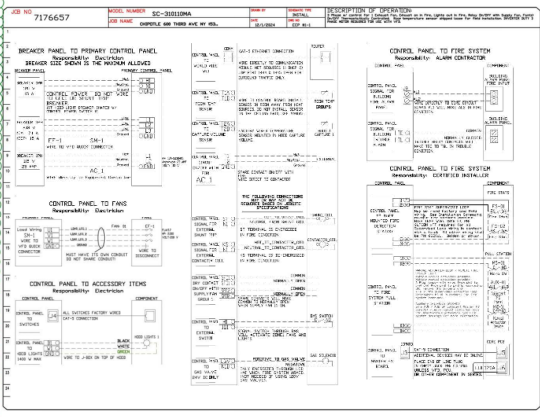
8 OF 19

DOR NOW Filing #: M03180574-52

HOOD SHOP DRAWING PRODUCED BY
MANUFACTURER - FOR REFERENCE ONLY

ELECTRICAL PACKAGE - JOB#7176657

NO	TAG	PACKAGE #	LOCATION	SWITCHES	QUANTITY	OPTION	FAN CONTROLS					
				LOCATION			FAN TAG	TYPE	#	HP	VOLTS	FLA
1		SC-3030A	UTILITY CABINET LEFT	UTILITY CABINET LEFT HOOD #1	1 LIGHT 1 FAN	SMART CONTROL'S THERMOSTATIC CONTROL W/ RELAY SHUTOFF WITH SUPPLY	EF-1	EXHAUST	3	2000	208	5.7



REVISIONS

NO	DATE	DESCRIPTION
1	03/13/2025	1LD REVIEW SET
2	02/21/2025	1LD COMMENTS
3	02/21/2025	PERMIT-BID SET

CAPTIVE WIRE

Highvoltage Group
4441 Phoenician Park Rd., Raleigh, NC 27616 PHONE: 919.813.1000 FAX: 919.813.2007 EMAIL: info@captivewire.com

CHIPOTLE 600 THIRD AVE NY #5360_R1
600 3rd Avenue,
New York, NY, 10015

DATE: 11/7/2024
DWG #: 7176657-7
DRAWN BY: JMB-40
SCALE: 3/4" = 1'-0"
MASTER DRAWING

SHEET NO.

Consultant
Polaris
Consulting Engineers, P.C.
214 W. Main Street, Suite 208
Moorestown, NJ 08057
(856) 778-5400

Copyright 2023
THIS DRAWING IS AN INSTRUMENT OF SERVICE AND AS SUCH REMAINS THE PROPERTY OF CHIPOTLE MEXICAN GRILL, INC. PERMISSION FOR USE OF THIS DOCUMENT IS LIMITED AND CAN BE EXTENDED ONLY BY WRITTEN AGREEMENT WITH CHIPOTLE MEXICAN GRILL, INC.



STORE NO.: 31-5360
CHIPOTLE 600 THIRD AVE
600 THIRD AVE.
NEW YORK, NY 10015

CONSTRUCTION SET
03/13/2025

REV. DATE DESCRIPTION

1	02/21/2025	1LD REVIEW SET
2	02/21/2025	PERMIT-BID SET



PROFESSIONAL IN CHARGE: Anthony J. Scaramiento, P.E.
DRAWN BY: JMB-40
CREATED BY: JMB-40

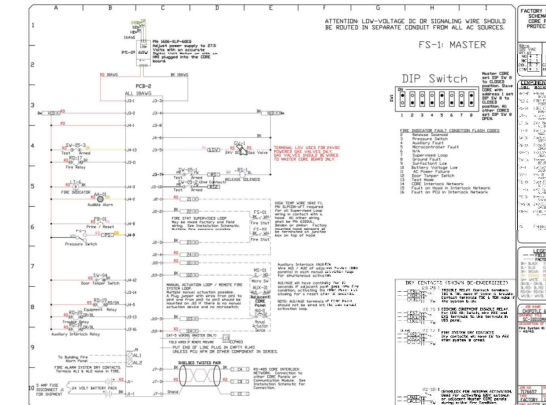
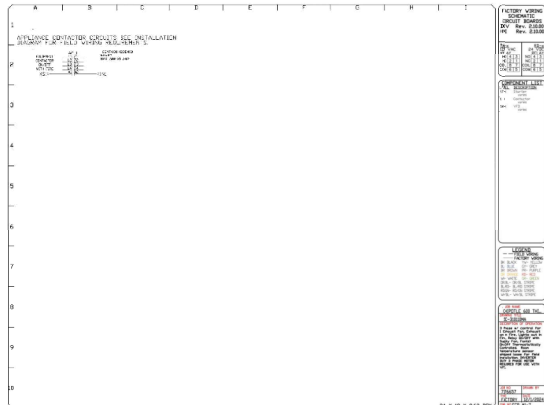
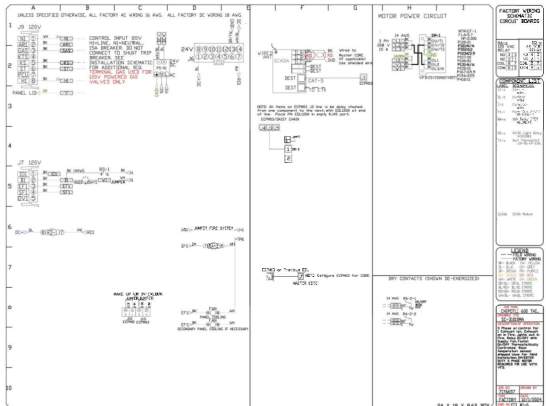
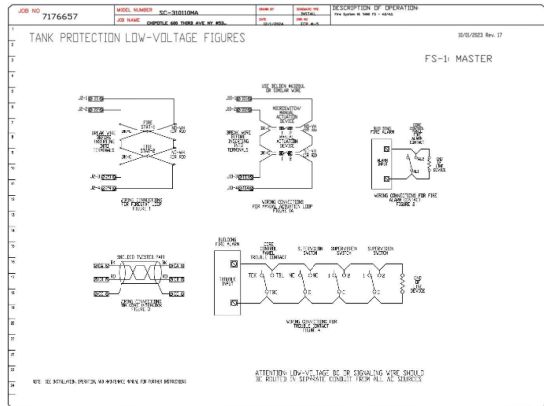
PROJECT NUMBER:
23096

SHEET TITLE:
CAPTIVE WIRE DRAWINGS

SHEET NUMBER:
M-407.00
11 OF 19

DOR NOW Filing #: M03180574.52

HOOD SHOP DRAWING PRODUCED BY
MANUFACTURER - FOR REFERENCE ONLY



REVISIONS

NO.	DESCRIPTION	DATE
1	ISSUED FOR PERMIT	03/13/2025
2	ISSUED FOR PERMIT	03/13/2025
3	ISSUED FOR PERMIT	03/13/2025

CAPTIVE WIRE
Highlands Group
4601 Potters Run Rd., Raleigh, NC 27617 PHONE: (919) 875-7425 FAX: (919) 875-0717 EMAIL: rcp@captivewire.com

CHIPOTLE 600 THIRD AVE NY #5360_R1
600 3rd Avenue,
New York, NY, 10016

DATE: 12/1/2024
DWG.#: 7176657
DRAWN BY: MB-40
SCALE: 3/4" = 1'-0"
MASTER DRAWING

SHEET NO.
8

Polaris
Consulting Engineers, P.C.
214 W. Main Street, Suite 208
Moorestown, NJ 08057
(856) 778-5400

CHIPOTLE 2023
THIS DRAWING IS AN INSTRUMENT OF SERVICE AND AS SUCH REMAINS THE PROPERTY OF CHIPOTLE MEXICAN GRILL, INC. PERMISSION FOR USE OF THIS DOCUMENT IS LIMITED AND CAN BE EXTENDED ONLY BY WRITTEN AGREEMENT WITH CHIPOTLE MEXICAN GRILL, INC.



STORE NO.: 31-5360
CHIPOTLE 600 THIRD AVE
600 THIRD AVE.
NEW YORK, NY 10016

CONSTRUCTION SET
03/13/2025

REV.	DATE	DESCRIPTION
1	02/21/2025	LLD COMMENTS
2	02/21/2025	PERMIT-BID SET



PROFESSIONAL IN CHARGE: Anthony J. Scammarino, P.E.
DRAWN BY: RCE
CHECKED BY: JAS

PROJECT NUMBER: 23086

SHEET TITLE:
CAPTIVEAIRE
DRAWINGS

SHEET NUMBER:
M-408.00
12 OF 19

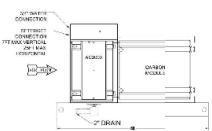
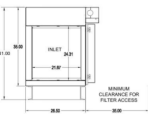
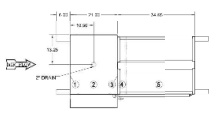
DOR NOW Filing #: M03180574-52

2025-DB#1/PH1-2

(6) COLUMNS
 CABLE 18 GA STEEL WELDED
 VOLTAGE 120/208
 POWER SALES 200 AMPTS
 FAN DATA SUPPLIED BY OTHERS

MECHANICAL DATA
 PCU (STAT) (CR 2.5X)
 TOTAL WEIGHT APPROXIMATE 270 LBS

NOTES
 1. ALL DIMENSIONS ARE NOMINAL AND GIVEN IN INCHES
 2. SEE THE NOTES ON THE PRODUCTION AND SERVICE DIFFERENTIAL TANK
 AND RECOMMENDED SHOP THAT PROVIDED BY OTHERS
 3. ALL DIMENSIONS ARE NOMINAL AND GIVEN IN INCHES
 4. ALL DIMENSIONS ARE NOMINAL AND GIVEN IN INCHES



APPROVED BY: [Signature]
 APPROVED BY: [Signature]
 APPROVED BY: [Signature]

AIR QUALITY ENGINEERING
 PHONE (866) 850-0775
 FAX (765) 521-0500
 WWW.AQ-ENGINEERING.COM

Polaris
 Consulting Engineers, P.C.
 214 W. Main Street, Suite 208
 Moorestown, NJ 08057
 (856) 778-5400

COPYRIGHT 2025
 THIS DRAWING IS AN INSTRUMENT OF SERVICE AND AS SUCH REMAINS THE PROPERTY OF CHIPOTLE MEXICAN GRILL, INC. PERMISSION FOR USE OF THIS DOCUMENT IS LIMITED AND CAN BE EXTENDED ONLY BY WRITTEN AGREEMENT WITH CHIPOTLE MEXICAN GRILL, INC.



STORE NO.: 31-5360
 CHIPOTLE 600 THIRD AVE
 600 THIRD AVE
 NEW YORK, NY 10016

CONSTRUCTION SET
 03/13/2025

REV.	DATE	DESCRIPTION
1	02/21/2025	ELD COMMENTS
	02/21/2025	PERMIT BID SET



PROFESSIONAL IN CHARGE: Anthony J. Scalomastro, P.E.
 DRAWN BY: RCE
 CHECKED BY: JAS

PROJECT NUMBER:
 23096

SHEET TITLE:
 PCU DRAWINGS

SHEET NUMBER:
 M-502.00

14 OF 19
 DOR NOW Filing #: M03180574.52

PCU SPEC DRAWING PRODUCED BY
 MANUFACTURER - FOR REFERENCE ONLY