

HOOD INFORMATION – JOB#4910779

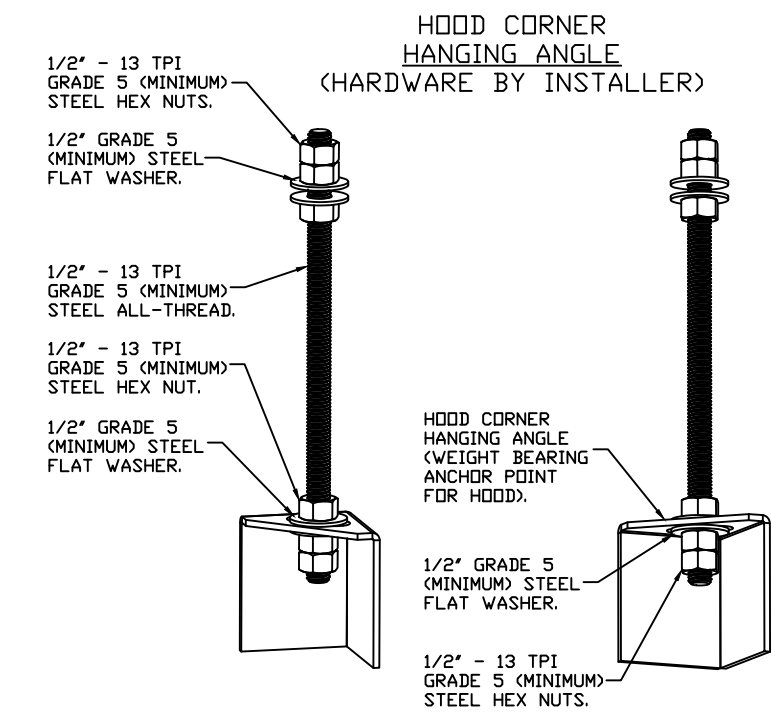
HOOD NO	TAG	MODEL	MANUFACTURER	LENGTH	MAX COOKING TEMP	TYPE	APPLIANCE DUTY	DESIGN CFM/FT	TOTAL EXH CFM	EXHAUST PLENUM RISER(S)						HOOD CONSTRUCTION	HOOD CONFIG		
										WIDTH	LENG	HEIGHT	DIA	CFM	VEL		SP	END TO END	ROW
1	HD-1 (FRY)	3347 BD-2	CAPTIVEAIRE	3' 6"	450 DEG	I	MEDIUM	171	600			4'	8"	600	1719	-0.568'	430 SS WHERE EXPOSED	ALONE	ALONE

HOOD INFORMATION

HOOD NO	TAG	FILTER(S)				LIGHT(S)				UTILITY CABINET(S)				FIRE SYSTEM PIPING	HOOD HANGING WEIGHT	
		TYPE	QTY	HEIGHT	LENGTH	EFFICIENCY @ 7 MICRONS	QTY	TYPE	WIRE GUARD	LOCATION	SIZE	TYPE	SIZE			ELECTRICAL MODEL #
1	HD-1 (FRY)	CAPTRATE SOLID FILTER	2	16"	20"	85% SEE FILTER SPEC	1	L55 SERIES E26	NO						YES	228 LBS

HOOD OPTIONS

HOOD NO	TAG	OPTION
1	HD-1 (FRY)	FIELD WRAPPER 30.00' HIGH FRONT, LEFT, RIGHT. BACKSPLASH 60.00' HIGH X 43.00' LONG 430 SS VERTICAL. BACKSPLASH 114.00' HIGH X 18.00' LONG 430 SS VERTICAL. RIGHT SIDESPLASH 80.00' HIGH X 34.00' LONG 430 SS VERTICAL. BACK STANDOFF (FLAT) 1' WIDE 43' LONG. RIGHT END STANDOFF(FIN/SLP) 1' WIDE 33' LONG INSULATED. LEFT QUARTER END PANEL 24' TOP WIDTH, 0' BOTTOM WIDTH, 24' HIGH 430 SS. RIGHT QUARTER END PANEL 24' TOP WIDTH, 0' BOTTOM WIDTH, 24' HIGH 430 SS. INSULATION FOR TOP OF HOOD. INSULATION FOR BACK OF HOOD. RISER SENSOR INSTALL 3IN DBL. SENSOR-CV.



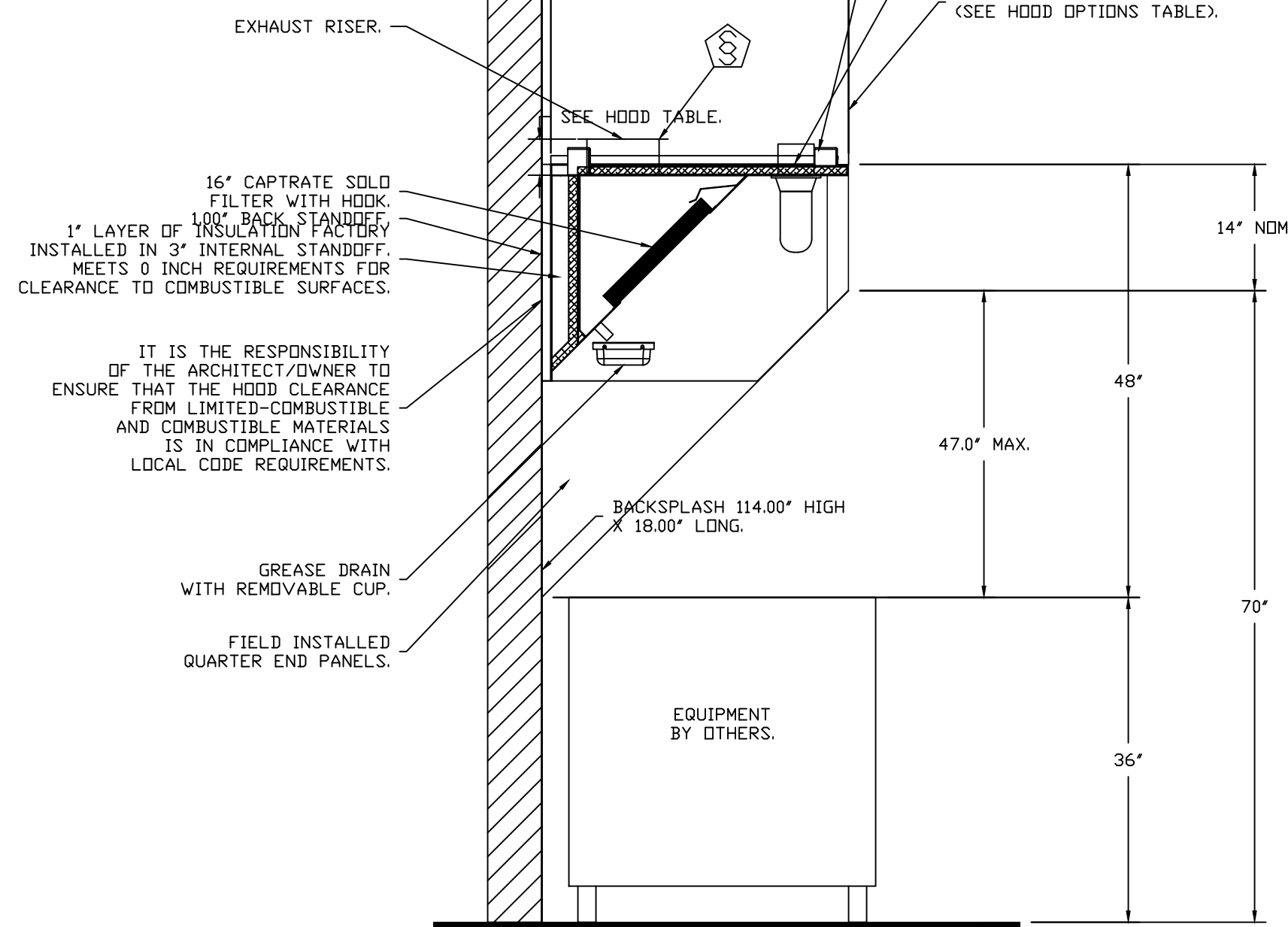
ASSEMBLY INSTRUCTIONS

HANGING ANGLE MUST BE SUPPORTED WITH 1/2" - 13 TPI GRADE 5 (MINIMUM) ALL-THREAD. SANDWICH HANGING ANGLES AND CEILING ANCHOR POINTS WITH 1/2" GRADE 5 (MINIMUM) STEEL FLAT WASHERS AND 1/2" - 13 TPI GRADE 5 (MINIMUM) HEX NUTS AS SHOWN. MUST USE DOUBLED HEX NUT CONFIGURATION BENEATH HOOD HANGING ANGLES AND ABOVE CEILING ANCHORS. MAINTAIN 1/4" OF EXPOSED THREADS BENEATH BOTTOM HEX NUT. TORQUE ALL HEX NUTS TO 57 FT-LBS.

L55 SERIES E26 CANOPY LIGHT FIXTURE - HIGH TEMP ASSEMBLY, INCLUDES CLEAR THERMAL AND SHOCK RESISTANT GLOBE (L55 FIXTURE).

1" LAYER OF INSULATION FACTORY INSTALLED ON TOP OF HOOD. MEETS 0 INCH REQUIREMENTS FOR CLEARANCE TO COMBUSTIBLE SURFACES.

FIELD WRAPPER 30.00" HIGH (SEE HOOD OPTIONS TABLE).

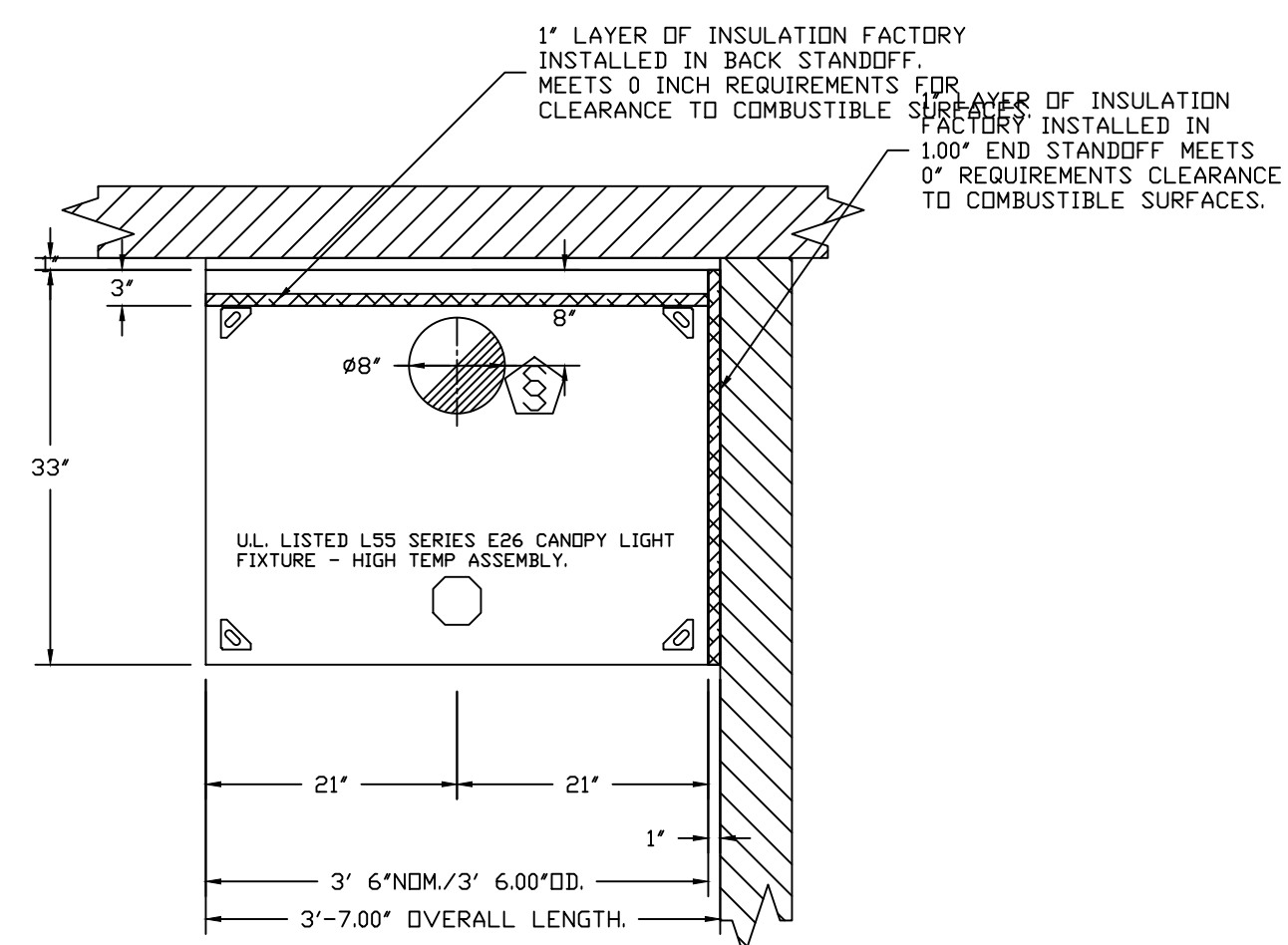


IT IS THE RESPONSIBILITY OF THE ARCHITECT/OWNER TO ENSURE THAT THE HOOD CLEARANCE FROM LIMITED-COMBUSTIBLE AND COMBUSTIBLE MATERIALS IS IN COMPLIANCE WITH LOCAL CODE REQUIREMENTS.

GREASE DRAIN WITH REMOVABLE CUP.

FIELD INSTALLED QUARTER END PANELS.

SECTION VIEW – MODEL 3347BD-2 HOOD – #1 (HD-1 (FRY))

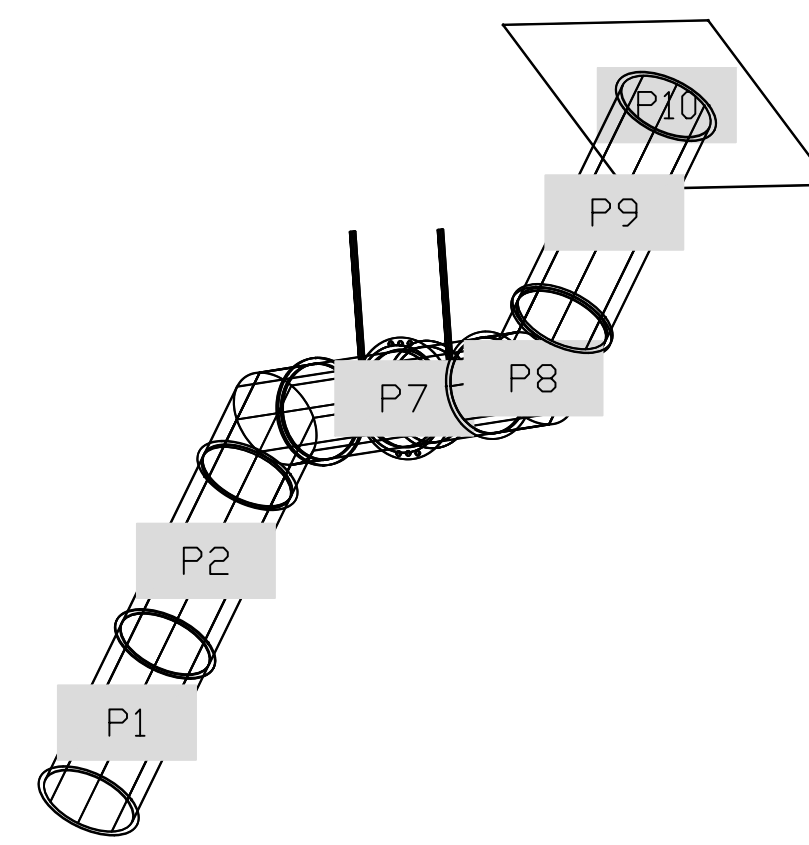


PLAN VIEW – HOOD #1 (HD-1 (FRY)) 3' 6.00" LONG 3347BD-2

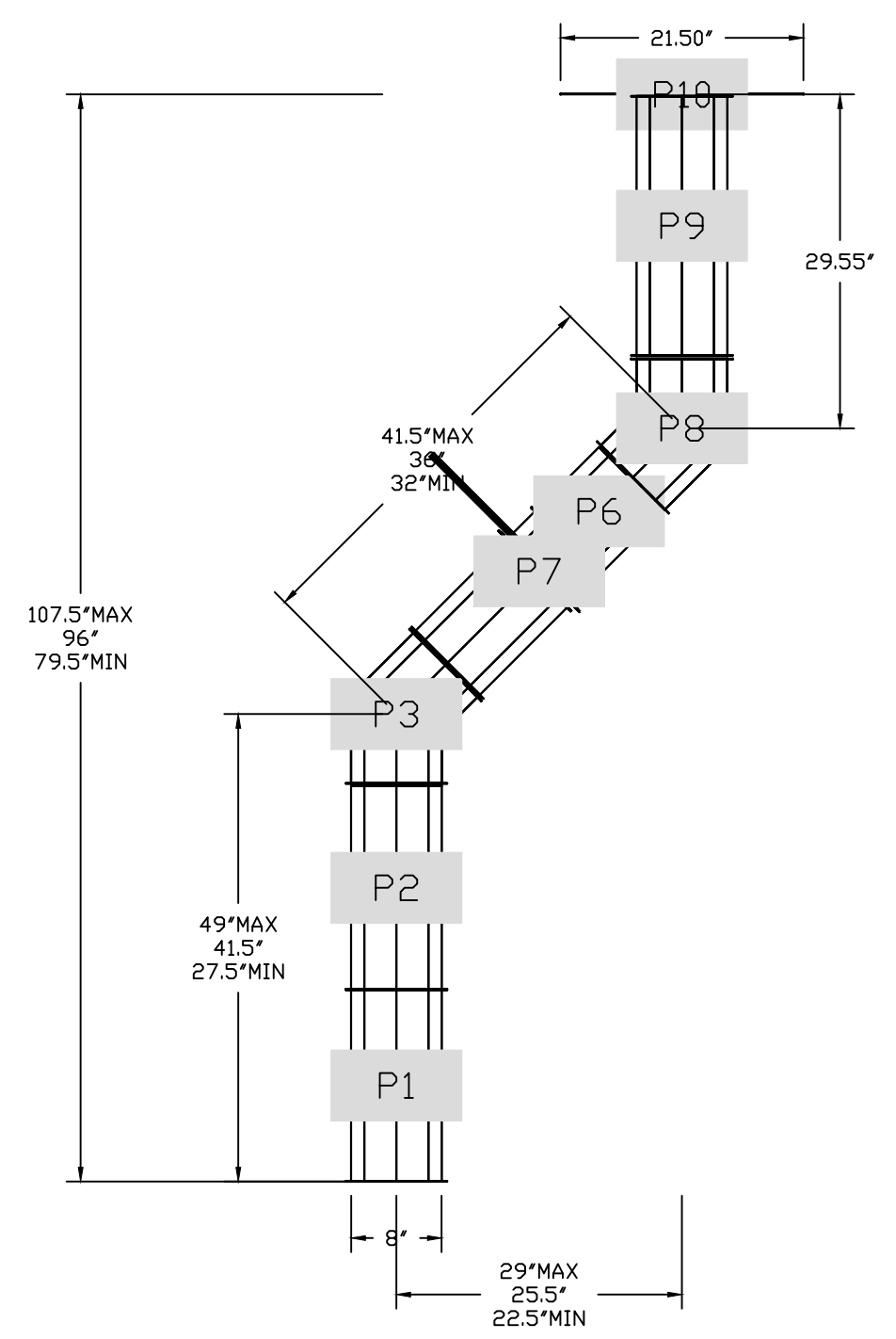
DUCTWORK #1 PARTS – JOB#4910779 DUCT RUN

TAG	PART #	CFM	GPM	ZONE	COVEREDBY	SP	WEIGHT	VELOCITY	QTY	DESCRIPTION
P1	DW0817LT	600				-0.0131	4.68	1718.87	1	SINGLE WALL DUCT 8" DIAMETER, 17' LONG, FLANGE AT BOTH ENDS. STAINLESS STEEL.
P2	DW0830AJDKIT	600				-0.0139	10.21	1718.87	1	SINGLE WALL DUCT ADJUSTABLE, 8" DIAMETER, 29.5' LONG, FLANGE AT ONE END WITH A 8" ADJUSTABLE COLLAR – STAINLESS STEEL.
P3	DW0845ASY	600				-0.0364	3.48	1718.87	1	SINGLE WALL DUCT 45 DEGREE ELBOW, 8" DUCT, ASSEMBLY.
P4	DW0811LT	600				-0.0086	3.13	1718.87	1	SINGLE WALL DUCT 8" DIAMETER, 11' LONG, FLANGE AT BOTH ENDS. STAINLESS STEEL.
P5	DW0804LT	600				-0.0031	1.29	1718.87	1	SINGLE WALL DUCT 8" DIAMETER, 4' LONG, FLANGE AT BOTH ENDS. STAINLESS STEEL.
P6	DW0818AJDKIT	600				-0.0063	6.80	1718.87	1	SINGLE WALL DUCT ADJUSTABLE, 8" DIAMETER, 17.5' LONG, FLANGE AT ONE END WITH A 8" ADJUSTABLE COLLAR – STAINLESS STEEL.
P7	DW08SUBRASY						2.34		1	DUCT SUPPORT BRACKET KIT, 8" DUCT, USED FOR HANGING DUCT. 12 GA STEEL, CLEAR ZINC COATING. – 2 RINGS, 4 BRACKETS, & HARDWARE BAG 2.
P8	DW0845ASY	600				-0.0448	3.48	1718.87	1	SINGLE WALL DUCT 45 DEGREE ELBOW, 8" DUCT, ASSEMBLY.
P9	ASSEMBLED W/P10	DW0823LT	600			-0.018	6.24	1718.87	1	SINGLE WALL DUCT 8" DIAMETER, 23' LONG, FLANGE AT BOTH ENDS. STAINLESS STEEL.
P10	ASSEMBLED W/P9 SYSTEM AT P10	DW1908TP	600				6.62	1718.87	1	DUCT TO CURB TRANSITION, 19-1/2" CURB TO 8" DUCT, 16 GA ALUMINIZED STEEL. MISC. NON-STANDARD TRANSITION PLATE. FOR USE WITH EXHAUST FAN.
						-0.7122	0.00			
							0.80		2	DUCT – 3M FIRE BARRIER 2000 PLUS SILICONE – USED AS SEALANT TO SEAL DUCT JOINTS.
							0.70		8	DUCT 'V' CLAMP, 8" DUCT WITH NEW DESIGN 14 GA BRACKETS, ASSEMBLY.
							55.47			TOTAL WEIGHT

DUCTWORK #1 SE VIEW DUCT RUN



DUCTWORK #1 FRONT VIEW DUCT RUN



CAPTIVE-AIRE HOODS ARE BUILT IN COMPLIANCE WITH UL 710 AND NFPA 96 AND ARE RECOGNIZED BY ONE OR MORE OF THE FOLLOWING:

ETL SANITATION LISTED
ETL LISTED FILE# 3054804-001

HOOD SYSTEM IS FABRICATED & DESIGNED PER UL-710 STANDARDS

REVISIONS

DESCRIPTION	DATE

CAPTIVE-AIRE

Air Solutions

1329 East Kemper Rd., Ste. 4210, Cincinnati, OH, 45246 PHONE: (513) 860-5555 EMAIL: reg12@captivaire.com

Skyline (Canal Winchester, OH)
6209 Prentiss School Dr,
Canal Winchester, OH, 43110

DATE: 6/7/2021
DWG.#: 4910779
DRAWN BY: jcirilli
SCALE: 3/4" = 1'-0"
MASTER DRAWING

SHEET NO.
1

EXHAUST FAN INFORMATION - JOB#4910779

FAN UNIT NO	TAG	QTY	FAN UNIT MODEL #	MANUFACTURER	CFM	ESP	RPM	MOTOR ENCL	HP	BHP	PHASE	VOLT	FLA	DISCHARGE VELOCITY	WEIGHT (LBS)	SONES
1	KEF 1	1	DU50HFA	CAPTIVEAIRE	600	0.600	1124	TEAD-ECM	0.500	0.1420	1	208	3.8	228 FPM	77	9.2

FAN OPTIONS

FAN UNIT NO	TAG	QTY	DESCRIPTION
1	KEF 1	1	GREASE BOX.
		1	ECM WIRING PACKAGE - PWM SIGNAL FROM ECPM03 PREWIRE (TELCO MOTOR), CCW ROTATION.
		1	2 YEAR PARTS WARRANTY.

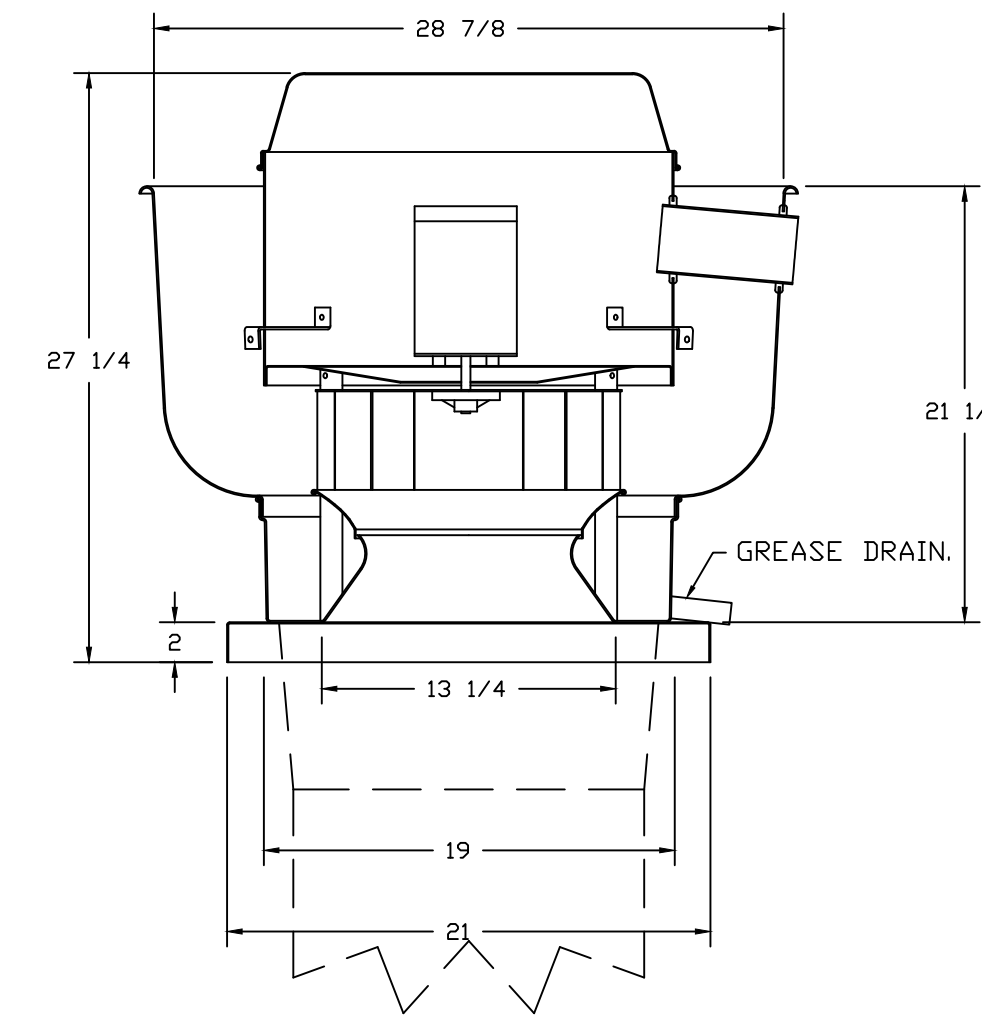
FAN ACCESSORIES

FAN UNIT NO	TAG	EXHAUST				SUPPLY		
		GREASE CUP	GRAVITY DAMPER	WALL MOUNT	SIDE DISCHARGE	GRAVITY DAMPER	MOTORIZED DAMPER	WALL MOUNT
1	KEF 1	YES						

CURB ASSEMBLIES

NO	DN FAN	TAG	WEIGHT	ITEM	SIZE
1		CURB ADP	17 LBS	EXHAUST ADAPTER	FROM 19.500"SQ TO 19.500"SQ X 11.000"H.

FAN #1 DU50HFA - EXHAUST FAN (KEF 1)



FEATURES:

- DIRECT DRIVE CONSTRUCTION (NO BELTS/PULLEYS).
- ROOF MOUNTED FANS.
- RESTAURANT MODEL.
- UL705 AND UL762 AND ULC-S645
- VARIABLE SPEED CONTROL.
- INTERNAL WIRING.
- THERMAL OVERLOAD PROTECTION (SINGLE PHASE).
- HIGH HEAT OPERATION 300°F (149°C).
- GREASE CLASSIFICATION TESTING.
- NEMA 3R SAFETY DISCONNECT SWITCH.

NORMAL TEMPERATURE TEST

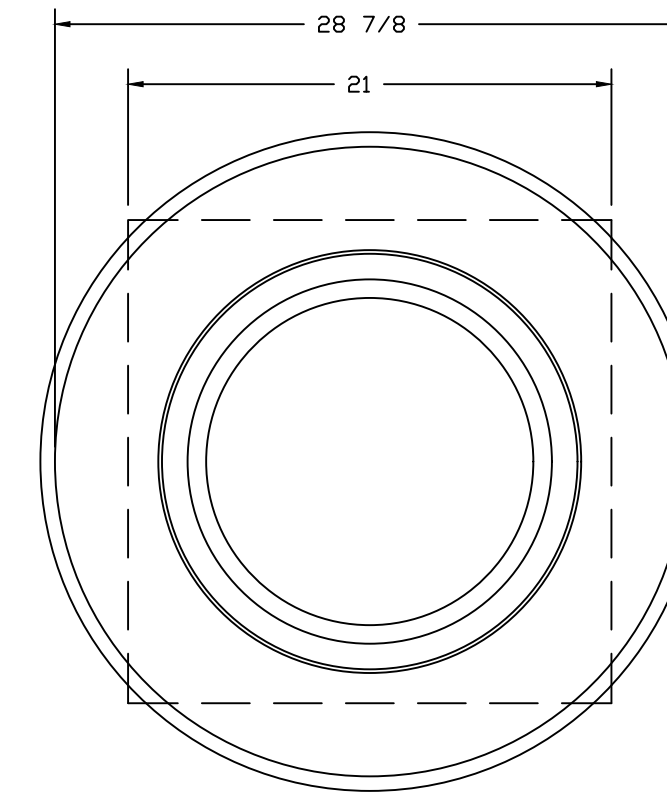
EXHAUST FAN MUST OPERATE CONTINUOUSLY WHILE EXHAUSTING AIR AT 300°F (149°C) UNTIL ALL FAN PARTS HAVE REACHED THERMAL EQUILIBRIUM, AND WITHOUT ANY DETERIORATING EFFECTS TO THE FAN WHICH WOULD CAUSE UNSAFE OPERATION.

ABNORMAL FLARE-UP TEST

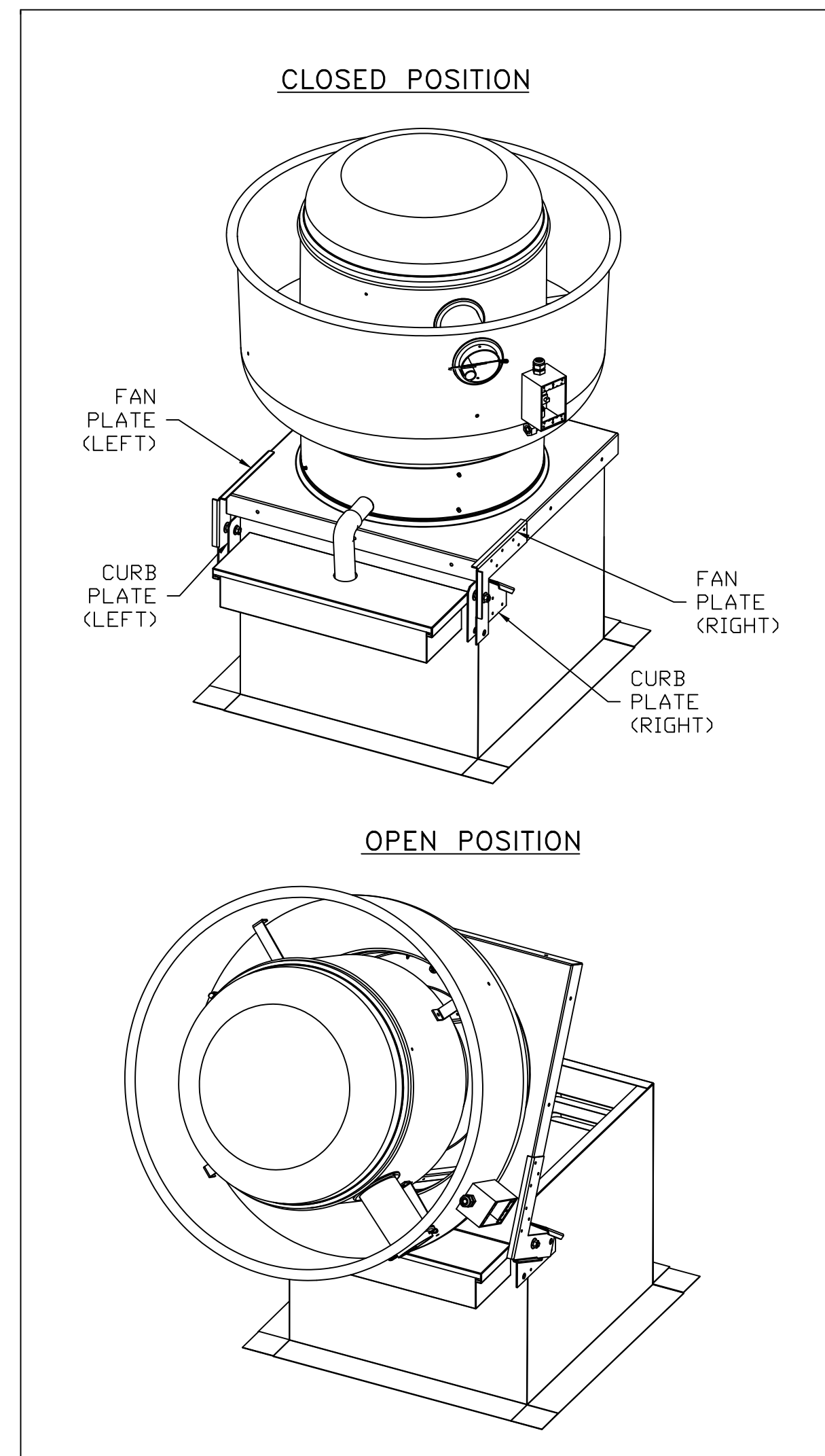
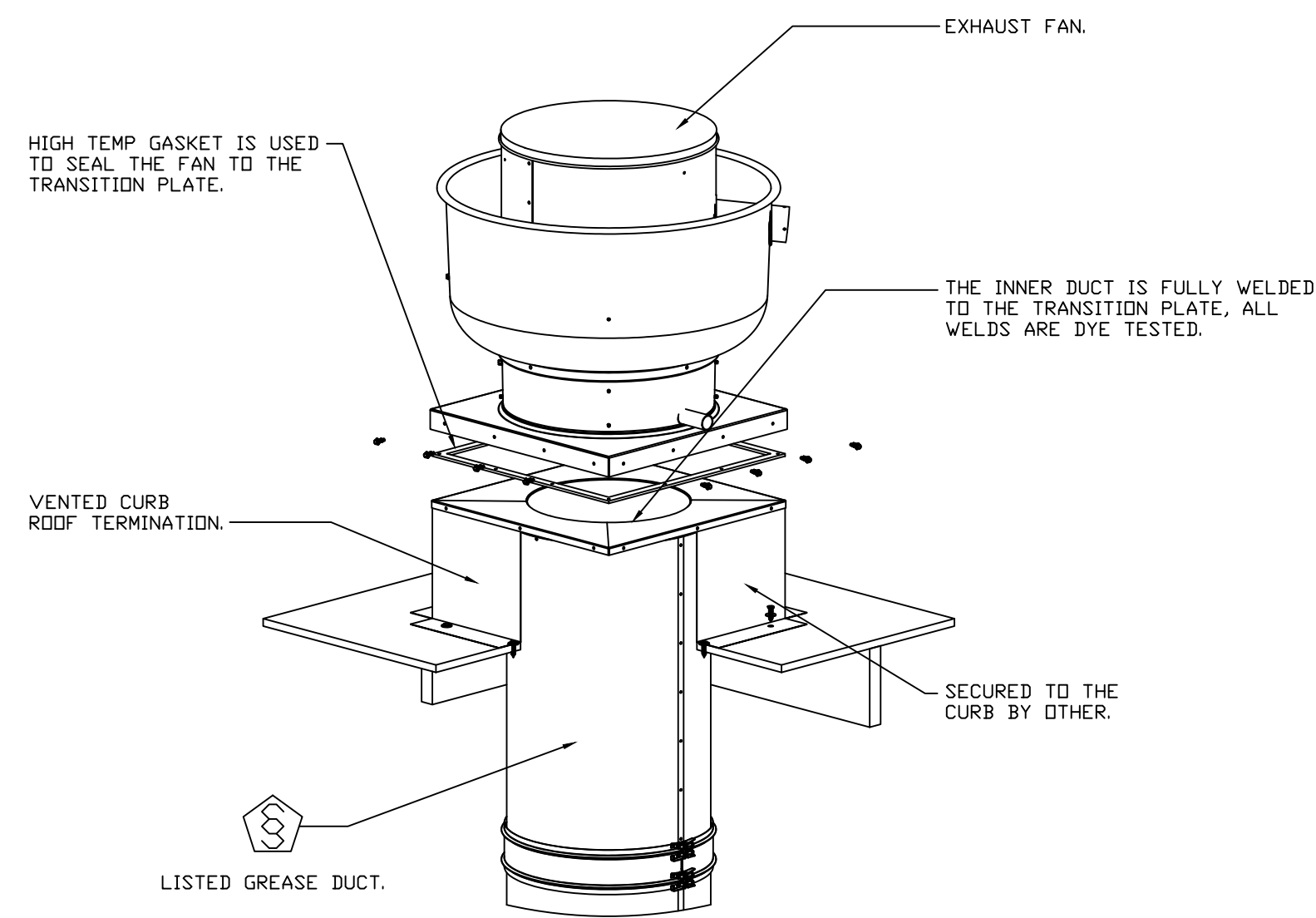
EXHAUST FAN MUST OPERATE CONTINUOUSLY WHILE EXHAUSTING BURNING GREASE VAPORS AT 600°F (316°C) FOR A PERIOD OF 15 MINUTES WITHOUT THE FAN BECOMING DAMAGED TO ANY EXTENT THAT COULD CAUSE AN UNSAFE CONDITION.

OPTIONS

GREASE BOX.
ECM WIRING PACKAGE - PWM SIGNAL FROM ECPM03 PREWIRE (TELCO MOTOR), CCW ROTATION.
2 YEAR PARTS WARRANTY.



TOP VIEW



GREASE FAN DETAIL

REVISIONS

DESCRIPTION	DATE:



Skyline (Canal Winchester, OH)
6209 Prentiss School Dr,
Canal Winchester, OH, 43110

DATE: 6/7/2021

DWG.#: 4910779

DRAWN BY: jcirilli

SCALE: 3/4" = 1'-0"

MASTER DRAWING

SHEET NO.
2

