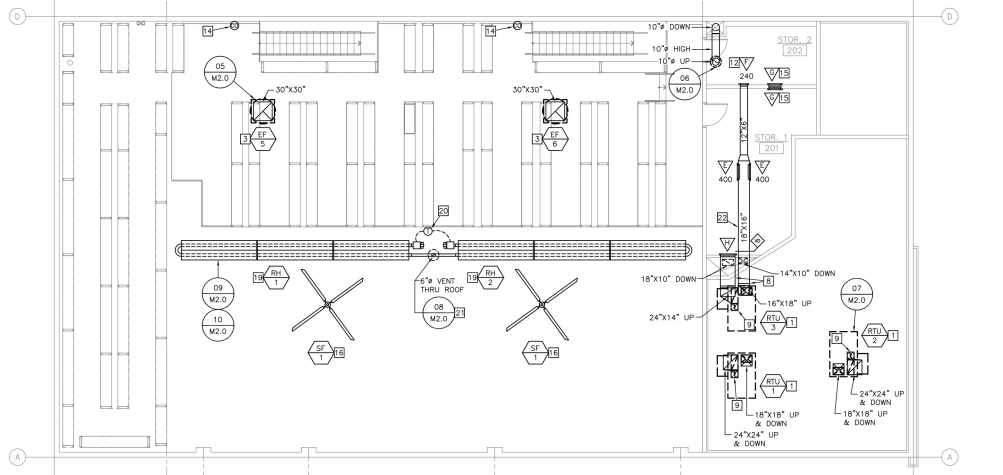


01 FIRST FLOOR MECHANICAL PLAN
1/8" = 1'-0"



02 MEZZANINE MECHANICAL PLAN
1/8" = 1'-0"

GENERAL NOTES

- CONTRACTORS AND SUB-CONTRACTORS SHALL CAREFULLY REVIEW THE CONSTRUCTION DOCUMENTS REGARDING THE COMPLETE WORK IS DISPERSED THROUGHOUT THE DOCUMENT SET AND CANNOT BE ACCURATELY DETERMINED WITHOUT REFERENCE TO THE COMPLETE DOCUMENT SET.
- COORDINATE WITH THE WORK OF OTHER SECTIONS. EQUIPMENT SHALL NOT BE SCALED FOR EXACT MEASUREMENT. REFER TO MANUFACTURER'S STANDARD INSTALLATION DRAWINGS FOR EQUIPMENT CONNECTIONS AND INSTALLATION REQUIREMENTS. PROVIDE DUCTWORK, CONNECTIONS, ACCESSORIES, OFFSETS, AND MATERIALS NECESSARY FOR A COMPLETE SYSTEM.
- ALL WORK SHALL COMPLY WITH STATE AND LOCAL CODE REQUIREMENTS AS APPROVED AND AMENDED BY THE GOVERNING CITY. PURCHASE ALL PERMITS ASSOCIATED WITH THE WORK. OBTAIN ALL INSPECTIONS REQUIRED BY CODE.
- PROVIDE TURNING VANES IN ALL SQUARE (90 DEGREE) ELBOWS.

THERMOSTAT PROGRAMMING

PROGRAM SHOWROOM AND OFFICE THERMOSTATS AS FOLLOWS:
COOLING
 MONDAY THROUGH SATURDAY 5:30 AM TO 7:00 PM = 72°F.
 (SETBACK TO 82°F OTHERWISE).
HEATING
 MONDAY THROUGH SATURDAY 5:30 AM TO 7:00 PM = 67°F.
 (SETBACK TO 57°F OTHERWISE).

OWNER FURNISHED EQUIPMENT

THE FOLLOWING HVAC COMPONENTS SHALL BE FURNISHED BY OWNER, AND INSTALLED BY THE MECHANICAL CONTRACTOR. CONTRACTOR SHALL PROVIDE ONE-YEAR LABOR WARRANTY ON ALL OWNER FURNISHED EQUIPMENT:
 -ALL EXHAUST AND VENTILATION FANS
 -ALL PROGRAMMABLE THERMOSTATS AND REMOTE SENSORS
 -ALL ROOFTOP UNITS
 -ALL SUPPLY AND CEILING FANS (HVLS FANS INSTALLED BY OTHERS)
 -ALL RADIANT HEATERS
 -ALL INFRARED HEATERS
 -ALL UNIT HEATERS
 THE OWNER SHALL FURNISH ALL ACCESSORIES LISTED IN THE EQUIPMENT SCHEDULES. THE MECHANICAL CONTRACTOR SHALL BE RESPONSIBLE FOR ALL ACCESSORIES, MOUNTING HARDWARE, AND OTHER APURTENANCES REQUIRED FOR INSTALLATION AND NOT LISTED IN THE SCHEDULES.

SHOP VENTILATION NOTE

THE TIRE INSTALLATION AREA MEETS THE IMC CHAPTER 4 SECTION 402 REQUIREMENTS FOR NATURAL VENTILATION BY WAY OF LARGE OPERABLE DOORS GREATLY EXCEEDING THE MINIMUM AREA REQUIREMENT OF 4% OF THE OVERALL FLOOR AREA. IN ADDITION, FOR WORKER COMFORT, TWO ROOF MOUNTED EXHAUST FANS ARE PROVIDED FOR ONE-DIRECTION OPERATION AND THEIR COMBINED CFM GREATLY EXCEEDS THE MINIMUM CFM REQUIREMENTS OF SECTION 403. THESE FANS ARE ALSO ENERGIZED UPON A CALL BY ANY OF 4 SHOP CARBON MONOXIDE (CO) SENSORS WHEN A MAXIMUM ALLOWABLE CO LEVEL (IN PPM) IS REACHED.

OUTDOOR AIR CALCS - 2015 NCMC

SHOP = 5224 SQUARE FEET.
 SALES = 1656 SQUARE FEET (BELOW) + 395 SQUARE FEET (ABOVE).
 SALES TOTAL = 2051 SQUARE FEET.
 SHOP VENTILATION RATE = 0.75 CFM PER SQUARE FOOT.
 5224 SQUARE FEET X 0.75 = 3918 CFM REQUIRED.
 EXHAUST FANS EF-5 AND EF-6 EACH PROVIDE 5700 CFM.
 SHOP ALSO COVERED BY SECTION 402 REQUIREMENTS FOR NATURAL VENTILATION.
 SALES VENTILATION RATE:
 A. 15 PERSONS PER 1000 SF = 1.656 X 15 = 25 PERSONS.
 25 PERSONS X 7.5 CFM EACH = 188 CFM REQUIRED.
 B. 1685 SF X 0.12 CFM PER SF = 198 CFM REQUIRED.
 (A + B) / 0.8 = 483 CFM REQUIRED.
 STORAGE VENTILATION RATE:
 C. 395 SF X 0.12 CFM PER SF = 48 CFM. 48 CFM / 0.8 = 60 CFM
 TOTAL REQUIRED FOR SALES & STORAGE = 543 CFM.
 TOTAL OUTDOOR AIR PROVIDED (RTU-1, 2 & 3) = 570 CFM.

MECHANICAL KEY NOTES

- INSTALL OWNER FURNISHED ROOFTOP UNIT AND ROOF CURB. SHIM UNIT AND CURB LEVEL FOR PROPER CONDENSATE DRAINAGE. PROVIDE FLEXIBLE CONNECTORS ON THE SUPLY AND RETURN AIR DUCT CONNECTIONS. TRANSITION TO DUCT SIZES SHOWN.
- INSTALL OWNER FURNISHED CEILING MOUNTED EXHAUST FAN. TRANSITION FROM FAN DISCHARGE TO DUCT SIZE SHOWN AND EXTEND UP THROUGH ROOF. PROVIDE A ROOF JACK, STORM COLLAR, AND ALL-WEATHER CAP.
- INSTALL OWNER FURNISHED ROOF MOUNTED EXHAUST FAN AND CURB.
- INSTALL OWNER FURNISHED ELECTRIC UNIT HEATER WITH MOUNTING BRACKET. REFER TO DUCT SIZE SHOWN AND EXTEND UP THROUGH ROOF.
- INSTALL CEILING MOUNTED TEMPERATURE SENSOR ADJACENT TO ROOF GRILLE. REFER TO TEMPERATURE SENSOR MOUNTING DETAIL FOR ADDITIONAL INFORMATION.
- INSTALL THERMOSTATS (3) AT 40" AFF. THERMOSTATS SHALL BE 7-DAY PROGRAMMABLE TYPE WITH AUTO-CHANGEOVER AND AUTOMATIC START CAPABILITY.
- OWNER FURNISHED THERMOSTAT FOR ELECTRICAL CONTRACTOR TO INSTALL. INSULATE EXTERIOR WALL BEHIND THERMOSTAT AND CAULK WIRE PENETRATION THROUGH WALL. COORDINATE WITH ELECTRICAL. MODEL T651A318/U (VERIFY).
- ROUTE DUCT TIGHT TO BOTTOM OF STRUCTURE.
- FACTORY PROVIDED INTERNAL RETURN AIR SMOKE DETECTOR INTERLOCKED TO SHUT DOWN UNIT UPON DETECTION OF SMOKE. INSTALL ASSOCIATED REMOTE ANNUNCIATOR WITH PIEZO ALARM AND POWER LEADS FOR VISIBLE AND AUDIBLE ALARM SIGNAL, AND VISIBLE TROUBLE SIGNAL. MOUNT ON WALL INSIDE OFFICE AREA. SEE ELECTRICAL FOR LOCATION.
- UNDERCUT DOOR 1" FOR TRANSFER AIR.
- ARCHITECTURAL PROVIDED DOOR LOUVER. REFER TO ARCHITECTURAL DOOR SCHEDULE FOR ADDITIONAL INFORMATION.
- PROVIDE SUPPLY REGISTER. MOUNT BOTTOM OF REGISTER AT A MINIMUM OF 8"-8" AFF.
- INSTALL OWNER FURNISHED WALL MOUNTED EXHAUST FAN. MOUNT BOTTOM OF FAN AT 78" AFF.
- GC TO PROVIDE CARBON MONOXIDE (CO) DETECTOR. (2) AT SHOP FLOOR 48" ABOVE WALKING SURFACE. (2) AT SHOP MEZZANINE ON BACK WALL JUST BELOW TOP RAIL OF HANDRAIL. DETECTOR SHALL PRODUCE AN AUDIBLE ALARM SIGNAL AND SHALL BE INTERLOCKED WITH SHOP EXHAUST FANS EF-5 AND EF-6 TO ENERGIZE FANS. ALL DETECTORS SHALL ALARM UPON CO LEVEL DETECTION OF 50 PPM, OR AS DIRECTED BY LOCAL CODE. DETECTORS SHALL BE AS THOSE MADE BY HONEYWELL ESPIONT, MODEL E35AH, OR MAJORCUB.
- MOUNT GRILLE TIGHT TO STRUCTURE.
- SUPPLIER SHALL INSTALL OWNER FURNISHED HVLS PROPELLER FAN ABOVE SHOP AREA PER MANUFACTURER'S RECOMMENDATIONS. LOCATION PER ARCHITECTURAL DWGS. COORDINATE WITH ELECTRICAL FOR POWER, CONTROL, AND DISCONNECT.
- INSTALL OWNER FURNISHED INFRARED HEATER PER MANUFACTURER'S INSTALLATION INSTRUCTIONS. LOCATION PER ARCHITECTURAL DWGS. MOUNT BOTTOM OF HEATER AT MINIMUM OF 8'-0" AFF.
- OWNER FURNISHED 120V LINE VOLTAGE THERMOSTAT FOR INSTALLATION AND WIRING BY ELECTRICAL CONTRACTOR. SINGLE STAT SHALL BE COMPATIBLE WITH ONE OR MULTIPLE (IN SERIES) INFRARED HEATERS. MOUNT 48" ABOVE FINISHED FLOOR.
- INSTALL OWNER FURNISHED RADIANT HEATER AT 13'-6" AFF. REFER TO RADIANT HEATER SCHEDULE ON SHEET M2.0. REFER TO ARCHITECTURAL DRAWINGS FOR RELATED DIMENSIONS AND 45 DEGREE AIM TO FLOOR.
- INSTALL OWNER FURNISHED THERMOSTAT, FURNISHED WITH UNIT. PROVIDE ALL LOW VOLTAGE WIRING NEEDED TO CONNECT THERMOSTAT TO RADIANT HEATER. SEE ELECTRICAL DRAWINGS FOR MOUNTING HEIGHT (48" AFF. VERIFY).
- OFFSET VERTICAL VENT POSITION AS REQUIRED TO AVOID INTERFERENCE WITH JOISTS AND SLOTLIGHTS. 6" MINIMUM CLEARANCE. FIELD VERIFY LOCATIONS AND REQUIREMENTS.
- INSTALL DUCTWORK IN STORAGE ROOM HIGH, CLOSE TO STRUCTURE. MINIMUM 7'-6" AFF TO BOTTOM OF DUCT/INSULATION.
- COORDINATE WITH ELECTRICAL CONTRACTOR AND INSTALL SALES AREA CEILING FANS. REFER TO ARCHITECTURAL PLANS AND DETAILS.

NOTES:
 1. AREAS OF RESOLVE ASSISTANCE EXEMPTION BASED ON FULLY SPRINKLED BUILDING.
 DESIGNER STATEMENT:
 I HEREBY AFFIRM THE DESIGN OF THIS BUILDING COMPLIES WITH THE NORTH CAROLINA STATE BUILDING CODE, VOLUME 10 - MAKING BUILDINGS AND FACILITIES ACCESSIBLE TO AND USABLE BY PERSONS WITH DISABILITIES AS I HAVE INDICATED ABOVE. THESE PLANS HAVE BEEN PROPERLY EXAMINED BY THE UNDERSIGNED. I HAVE DETERMINED THAT THEY COMPLY WITH EXISTING LOCAL NORTH CAROLINA CODES AND HAVE BEEN PROPERLY SITE ADAPTED FOR USE IN THIS AREA.
 SIGNED: _____ DATE: _____

THIS SHEET IS PART OF THE CONSTRUCTION DOCUMENTS. OTHER SHEETS INCLUDING SPECIFICATIONS APPLY. THAT SHOWN HEREON IS SOLEMATIC IN NATURE AND NOT TO BE USED AS A SHOP DRAWING. THEREFORE, INCLUDE ALL MODIFICATIONS REQUIRED TO CONFORM TO SITE CONDITIONS AND THE EQUIPMENT AND MATERIALS. VERIFY LOCATIONS AND DIMENSIONS OF ALL ARCHITECTURAL AND STRUCTURAL ELEMENTS AS SHOWN. SHOW FOR REFERENCE AND SHALL BE VERIFIED PRIOR TO CONSTRUCTION AND THE ENGINEER ASSUMES NO LIABILITY FOR THE ACCURACY OF THESE ELEMENTS. NO DESIGN RESPONSIBILITY IS ASSUMED FOR ANY PORTION OF THE WORK THAT THE PROFESSIONAL ENGINEER HAS NOT SIGNED AND SCALED PER STATE/PROVINCE REQUIREMENTS.

| NO. | REVISION | DATE |
|-----|----------|------|
| | | |
| | | |
| | | |
| | | |

KD
 Kinetic Design
 20381 Loke Forest Dr., Ste B16
 Lenoir, NC 27560
 919-710-6334
 kineticdesign@aol.com

PROFESSIONAL SEAL
 050930
 JOSEPH H. HENNING
 ENGINEER

CONSULTANT
LB LBI OF NC, PLLC
 LBI OF NC, PLLC
 210 W. 20th Street, Suite 200
 Kannon City, MO 64108
 North Carolina Certificate of
 Authorization Number P-1802
 7 816-997-9601
 7 816-997-9602
 Dinkeldt@lbi.com
 Copyright 2022



DISCLAIMER:
 THIS DRAWING IS AN INSTRUMENT OF SERVICE AND THE PROPERTY OF DISCOUNT TIRE COMPANY AND SHALL REMAIN THEIR PROPERTY. THE USE OF THIS DRAWING SHALL BE RESTRICTED TO THE ORIGINAL SITE FOR WHICH IT WAS PREPARED. PUBLICATION THEREOF IS EXPRESSLY LIMITED TO SUCH.

2700 S. Horner Blvd.
SANFORD, NC 27332

STORE NUMBER:
 MCE 43
 PROJECT MANAGER:
 DANIEL NELMS
 PREPARED BY:
 LBI OF NC, PLLC
 PH: (816) 997-9601
 FAX: (816) 997-9602
 DRAWN BY:
 AMG

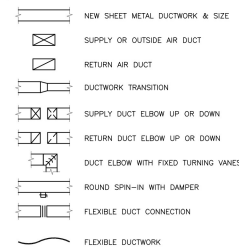
SHEET TITLE:
 MECHANICAL PLANS
 DATE:

SHEET NUMBER:
M1.0

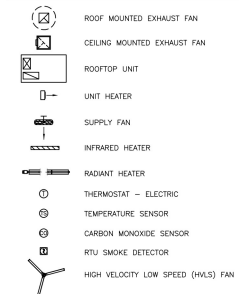
FOR CONSTRUCTION - 07/19/2022

MECHANICAL SYMBOLS LEGEND

DOUBLE LINE DUCT SYMBOLS:



EQUIPMENT:



ABBREVIATIONS:

| | |
|-----|--------------------------|
| AFF | ABOVE FINISHED FLOOR |
| BHP | BRAKE HORSEPOWER |
| BTU | BRITISH THERMAL UNIT |
| CFM | CUBIC FEET PER MINUTE |
| DB | DRY BULB |
| EAT | ENTERING AIR TEMPERATURE |
| ESP | EXTERNAL STATIC PRESSURE |
| HZ | FREQUENCY |
| LAT | LEAVING AIR TEMPERATURE |
| NC | NOISE CRITERIA |
| OA | OUTSIDE AIR |
| PSI | POUNDS PER SQUARE INCH |
| RA | RETURN AIR |
| RTU | ROOFTOP UNIT |
| SA | SUPPLY AIR |
| TYP | TYPICAL |
| WC | WATER COLUMN |
| WB | WET BULB |

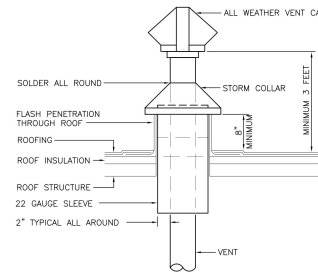
GRILLES/DIFFUSERS:

| | |
|----------|----------------------------------|
| [Symbol] | SUPPLY DIFFUSER |
| [Symbol] | SUPPLY DIFFUSER WITH 3-WAY THROW |
| [Symbol] | SUPPLY DIFFUSER WITH 2-WAY THROW |
| [Symbol] | SIDEMOUNT SUPPLY REGISTER |
| [Symbol] | RETURN GRILLE |

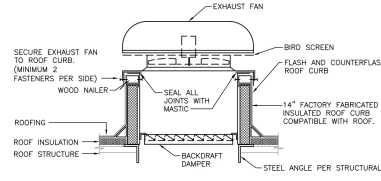
GENERAL REFERENCES/NOTATIONS:

| | |
|----------|----------------------------------|
| [Symbol] | MECHANICAL EQUIPMENT DESIGNATION |
| [Symbol] | DIFFUSER DESIGNATION AND CFM |
| [Symbol] | NOTE DESIGNATION |
| [Symbol] | REVISION DESIGNATION |

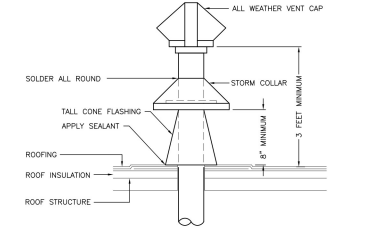
SYMBOLS LEGEND NOTES:
 1. REFER TO SPECIFICATIONS AND PLAN NOTES FOR DETAILED DESCRIPTION OF ALL DEVICES SHOWN IN THIS SCHEDULE, PROVIDED BY THIS CONTRACTOR.
 2. NOT ALL SYMBOLS AND/OR ABBREVIATIONS ARE NECESSARILY USED FOR THIS PROJECT.



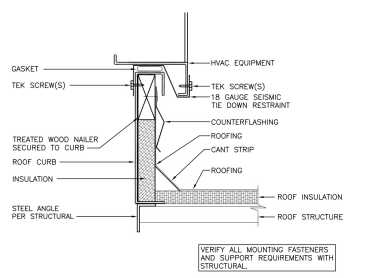
08 VENT THROUGH ROOF DETAIL
REFER TO SHEET M1.0



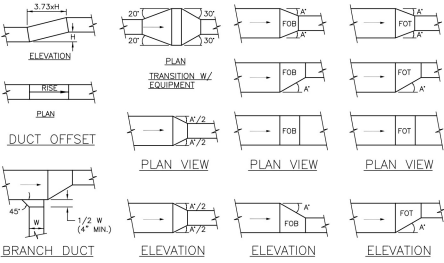
05 ROOF MOUNTED EXHAUST FAN DETAIL
REFER TO SHEET M1.0



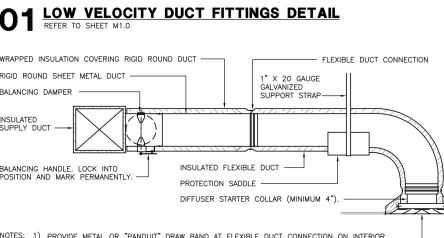
06 EXHAUST DUCT ROOF DETAIL
NOT TO SCALE



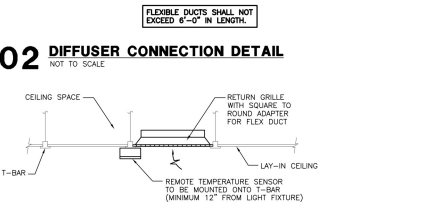
07 ROOFTOP UNIT CURB DETAIL
REFER TO SHEET M1.0



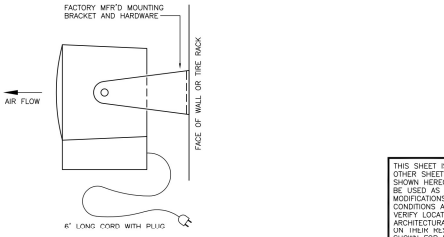
01 LOW VELOCITY DUCT FITTINGS DETAIL
REFER TO SHEET M1.0



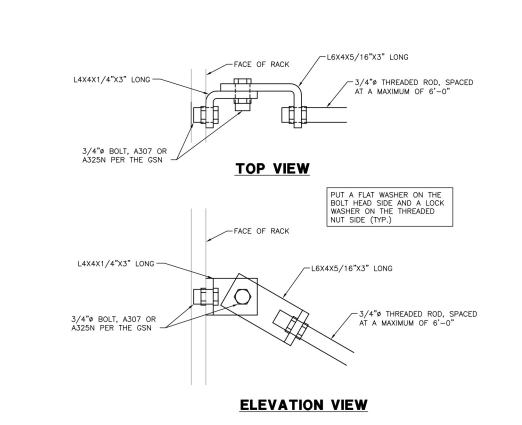
02 DIFFUSER CONNECTION DETAIL
NOT TO SCALE



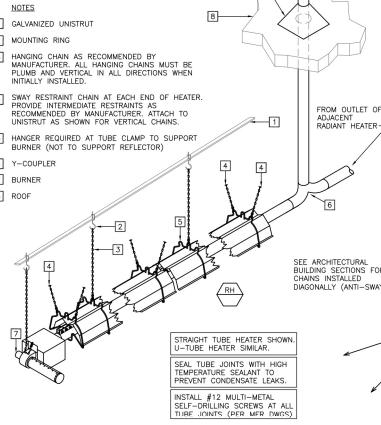
03 TEMPERATURE SENSOR MOUNTING DETAIL
REFER TO SHEET M1.0



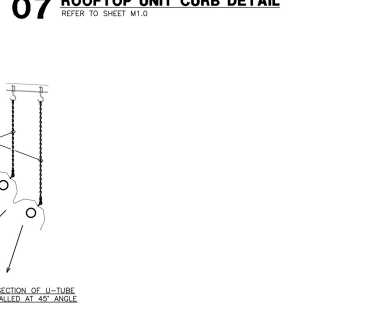
04 ELECTRIC UNIT HEATER DETAIL
REFER TO SHEET M1.0



10 RADIANT HEATER BRACING
NOT TO SCALE



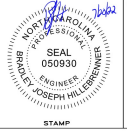
09 RADIANT HEATER MOUNTING DETAIL
REFER TO SHEET M1.0



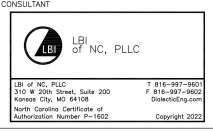
08 VENT THROUGH ROOF DETAIL (continued)

THIS SHEET IS PART OF THE CONSTRUCTION DOCUMENTS, OTHER SHEETS INCLUDING SPECIFICATIONS APPLY. THAT SHOWN HEREON IS SCHEMATIC IN NATURE AND NOT TO BE USED AS A SHOP DRAWING. THEREFORE, INCLUDE ALL MODIFICATIONS REQUIRED TO CONFORM TO SITE CONDITIONS AND THE EQUIPMENT AND MATERIAL USED. VERIFY LOCATIONS AND DIMENSIONS OF ALL ARCHITECTURAL AND STRUCTURAL ELEMENTS AS SHOWN ON OTHER SHEETS OF CONSTRUCTION. THESE ELEMENTS ARE SHOWN FOR REFERENCE AND SHALL BE VERIFIED PRIOR TO CONSTRUCTION AND THE ENGINEER ASSUMES NO LIABILITY FOR THE ACCURACY OF THESE ELEMENTS. NO DESIGN RESPONSIBILITY IS ASSIGNED FOR ANY PORTION OF THE WORK THAT THE PROFESSIONAL ENGINEER HAS NOT SIGNED AND SEALED PER STATE/PROVINCE REQUIREMENTS.

| NO. | REVISION | DATE |
|-----|----------|------|
| | | |
| | | |
| | | |
| | | |

CONSULTANT




DISCLAIMER:
 THIS DRAWING IS AN INSTRUMENT OF SERVICE AND THE PROPERTY OF DISCOUNT TIRE COMPANY AND SHALL REMAIN THEIR PROPERTY. THE USE OF THIS DRAWING SHALL BE RESTRICTED TO THE ORIGINAL SITE FOR WHICH IT WAS PREPARED. PUBLICATION THEREOF IS EXPRESSLY LIMITED TO SUCH.

2700 S. Horner Blvd. SANFORD, NC 27332

STORE NUMBER: MCC 43
PROJECT MANAGER: DANIEL NELMS
PREPARED BY: LBI OF NC, PLLC
 PH: (818) 997-9601
 FAX: (818) 997-9602
DRAWN BY: AMG

SHEET TITLE: MECHANICAL DETAILS
DATE:

SHEET NUMBER: M2.0

HVLS FAN SCHEDULE

| | |
|---------------------------|---|
| MARK (RFL) | 1,2 |
| MANUFACTURER | HUNTER |
| MODEL | ESD119 |
| TYPE | 12 DIA. PROP. |
| DRIVE TYPE | DIRECT |
| PERFORMANCE | |
| AIR FLOW (CFM) | VARIABLE |
| EXTERNAL STATIC (IN W.C.) | 0 |
| FAN SPEED (RPM) | VARIABLE |
| ELECTRICAL | |
| VOLTS/PHZ | 208/3/0 |
| FAN MOTOR HP | 5/8 |
| APPROX. WEIGHT (LBS) | 100 |
| NOTES | ALL |
| ACCESSORIES | |
| NOTES | 1) FURNISH WITH 24" FIXED DOWNROD ASSEMBLY 74094 2) FURNISH WITH PART #M - F" DISPLAY CONTROLLER 74000 3) DISCONNECT PROVIDED BY ELECTRICAL CONTRACTOR. |

CEILING FAN SCHEDULE

| | |
|---------------------------|---|
| MARK (CF) | 1 (TYPE OF 3) |
| MANUFACTURER | EMERSON |
| MODEL | CF3200SW |
| TYPE | PROPPELLER |
| DRIVE TYPE | DIRECT |
| PERFORMANCE | |
| AIR FLOW (CFM) | VARIABLE |
| EXTERNAL STATIC (IN W.C.) | 0 |
| FAN SPEED (RPM) | VARIABLE |
| ELECTRICAL | |
| VOLTS/PHZ | 120/1/0 |
| FAN MOTOR WATTS | 64 |
| APPROX. WEIGHT (LBS) | 25 |
| NOTES | ALL |
| ACCESSORIES | |
| NOTES | 1) FURNISH WITH 24" FIXED DOWNROD ASSEMBLY 74094 2) FURNISH WITH PART #M - F" DISPLAY CONTROLLER 74000 3) DISCONNECT PROVIDED BY ELECTRICAL CONTRACTOR. |

INFRARED HEATER SCHEDULE

| | |
|------------------------|---|
| MARK (HR) | 2,3 |
| MANUFACTURER | SALPHA |
| MODEL | SALPHA200S |
| TYPE | TUBULAR SINGLE EMITTER |
| ELECTRIC HEAT | |
| INPUT (GAL/HR) @ 208V | 1.500 |
| OUTPUT (BTU/HR) @ 208V | 5.000 |
| ELECTRICAL | |
| VOLTS/PHZ | 208/1/0 |
| FAN MOTOR HP | 1/2 |
| MCA (MCA/AMPS) | 12/1.5 |
| APPROX. WEIGHT (LBS) | 0 |
| NOTES | ALL |
| ACCESSORIES | |
| NOTES | 1) FACTORY FURNISHED WIRE GUARD 2) FACTORY FURNISHED ADJUSTABLE MOUNTING BRACKETS 3) DISCONNECT SWITCH PROVIDED BY ELECTRICAL CONTRACTOR. |

RADIANT HEATER SCHEDULE

| | |
|----------------------|--|
| MARK (RH) | 1,2 |
| MANUFACTURER | SOLARONICS |
| MODEL | ST100048 |
| GAS INPUT (BTU/HR) | 100,000 |
| VOLTS/PHZ | 120/1/0 |
| MOUNTING HEIGHT (FT) | 41.5/NOTE 15 |
| NOTES | 1 |
| ACCESSORIES | |
| NOTES | 1) FURNISH WITH MFR. STANDARD 24 VOLT THERMOSTAT 2) SINGLE STAT FOR TWO HEATERS |

UNIT HEATER SCHEDULE

| | |
|----------------------|---|
| MARK (RH) | 1,2,3 |
| MANUFACTURER | RAYWALL |
| MODEL | HF600C |
| TYPE | ELECTRICAL |
| AIR FLOW (CFM) | 262 |
| ELECTRIC HEAT | |
| INPUT (GAL/HR) | 4.200 |
| OUTPUT (BTU/HR) | 14.300 |
| ELECTRICAL | |
| VOLTS/PHZ | 208/1/0 |
| MOTOR HP | 1/100 |
| MCA (AMPS) | 25.25 |
| MCA (AMPS) | 30 |
| APPROX. WEIGHT (LBS) | 20 |
| ACCESSORIES | IT |
| NOTES | ALL |
| ACCESSORIES | |
| NOTES | 1) FURNISH MOUNTING BRACKET 2) ADJUSTABLE THERMOSTAT 3) DISCONNECT PROVIDED BY ELECTRICAL CONTRACTOR. |

ROOFTOP UNIT SCHEDULE

| | | |
|----------------------------|---|-------------|
| MARK (RTU) | 1,2 | 3 |
| MANUFACTURER | CARRIER | CARRIER |
| MODEL | 48CC03000 | 48CC03000 |
| AIR FLOW (CFM) | 1,500 | 1,500 |
| DA FLOW (CFM) | 150 | 150 |
| AMBIENT DAT (°F) | 65 | 65 |
| EXTERNAL STATIC (IN. W.C.) | 0.8 | 0.8 |
| DA COOLING COIL | | |
| EAT (°DBWB) | 60/67 | 60/67 |
| TOTAL (BTU/HR) | 59,500 | 59,500 |
| SENSIBLE (BTU/HR) | 41,300 | 41,300 |
| GAS HEAT | | |
| FUEL | NATURAL GAS | NATURAL GAS |
| INPUT (BTU/HR) | 67,000 | 67,000 |
| OUTPUT (BTU/HR) | 53,000 | 53,000 |
| ELECTRICAL | | |
| VOLTS/PHZ | 208/3/0 | 208/3/0 |
| MOTOR HP | 2.4 | 2.4 |
| UNIT MCA | 29 | 29 |
| MCA/AMPS | 40 | 40 |
| APPROX. WEIGHT (LBS) | 780 | 780 |
| EER/SEER | 12.0 / 16.0 | 12.0 / 16.0 |
| NOTES | 1-11 | 2-11 |
| ACCESSORIES | | |
| NOTES | 1) PROVIDE WITH FACTORY REMOTE TEMPERATURE SENSOR WITH PLASTIC LOCKING COVER 2) PROVIDE WITH FACTORY 7 DAY PROGRAMMABLE THERMOSTAT WITH AUTO-CHANGEOVER 3) PROVIDE DRY BULB ECONOMIZER WITH FAULT DETECTION AND DIAGNOSTICS. SET MINIMUM OUTSIDE AIR AS SPECIFIED ABOVE. OUTSIDE AIR DAMPER SHALL FULLY CLOSE UPON UNIT SHUTDOWN 4) PROVIDE 14" HIGH FACTORY FABRICATED ADJUSTABLE FITCH ROOF CURB 5) PROVIDE WITH BAROMETRIC RELIEF 6) PROVIDE WITH TWO SETS OF FILTERS 7) PROVIDE WITH FACTORY SMOKE DETECTOR INSTALLED INSIDE UNIT. FURNISH WITH REMOTE ANNUNCIATOR FOR FIELD INSTALLATION. SEE PLAN FOR SUPPLY OR RETURN AIR LOCATION 8) PROVIDE WITH COVERED CONDENSER COIL HAL GUARD 9) PROVIDE WITH HIGH STATIC MOTOR 10) PROVIDE WITH CODE COMPLIANT CONDENSATE OVERFLOW SWITCH 11) DISCONNECT PROVIDED BY ELECTRICAL CONTRACTOR. | |

EXHAUST AND VENTILATION FAN SCHEDULE

| | | | | | |
|-----------------------|--|--------------|----------------|---------------|----------------------|
| MARK (EF) | BROAN | BROAN | BROAN | 5,6 | 5,6 |
| MODEL | L100 | L100 | L100 | 2414AD | 229P5D103 |
| TYPE | CLEAR | CLEAR | CLEAR | ROOF MOUNTED | WALL MOUNTED |
| DRIVE TYPE | DIRECT | DIRECT | DIRECT | DIRECT | DIRECT |
| PERFORMANCE | | | | | |
| AIR FLOW (CFM) | 80 | 80 | 80 | 6700 | 206 |
| EXT. STATIC (IN W.C.) | 0.375 | 0.375 | 0.375 | 0.125 | 0.125 |
| FAN SPEED (RPM) | 660 | 660 | 660 | 726 | 708 |
| ELECTRICAL | | | | | |
| VOLTS/PHZ | 120/1/0 | 120/1/0 | 120/1/0 | 208/1/0 | 120/1/0 |
| FAN MOTOR HP | 1/2 | 1/2 | 1/2 | 3/4 | 1/2 |
| FAN MOTOR WATTS | 80 DP | 80 DP | 80 DP | 80 DS, DT, DR | DS, FRC, WC, WQ, WVS |
| APPROX. WEIGHT (LBS) | 25 | 25 | 25 | 220 | 65 |
| ACCESSORIES | HEALTHSCREEN | HEALTHSCREEN | JANITORY COVER | SEWAGE AREA | COMPRESSOR ROOM |
| NOTES | | | | | |
| ACCESSORIES | | | | | |
| NOTES | RD-BACKDRAFT DAMPER, BS-BIRD SCREEN, DP-DISCONNECT PLUG, DS-DISCONNECT SWITCH, DT-DAMPER TRAY, FSO-FAN SPEED CONTROL, RC-PREFABRICATED INSULATED ROOF CURB, WC-WALL COLLAR, WQ-WIRE GUARD, WVS-WEATHER RESISTANT SHUTTER | | | | |
| NOTES | 1) OWNER FURNISHED VOLTAGE COOLING THERMOSTAT (ELECTRICAL TO INSTALL) THERMOSTAT TO ACTIVATE AT 90°F 2) MOTORS PROVIDED WITH INTERNAL THERMAL OVERLOAD PROTECTORS. | | | | |

GRILLE, REGISTER, AND DIFFUSER SCHEDULE

| | | | | | |
|----------------------|---|---|---|---|-----------------|
| MARK | A | B | C | D | E |
| MANUFACTURER | TITUS | TITUS | TITUS | TITUS | TITUS |
| MODEL | 100 | 500 | 800 | 1000 | 3000S |
| TYPE | LOUVERED FACE SUPPLY DIFFUSER | EGG CRATE LOUVERED FACE SUPPLY DIFFUSER | EGG CRATE LOUVERED FACE SUPPLY DIFFUSER | EGG CRATE LOUVERED FACE SUPPLY DIFFUSER | SUPPLY REGISTER |
| NECK SIZE (L"XW") | 18"X18" PER PLAN | 22"X22" | 18"X18" PER PLAN | 9"X9" PER PLAN | 24"X10" |
| FACE SIZE (L"XW") | 18"X18" | 22"X22" | 18"X18" | 9"X9" | 24"X10" |
| FRAME TYPE | LAY-IN | LAY-IN | LAY-IN | LAY-IN | DUCT MOUNT |
| FRESH | OFF-WHITE | OFF-WHITE | OFF-WHITE | OFF-WHITE | OFF-WHITE |
| NOISE CRITERIA LEVEL | <30 | <30 | <30 | <30 | <30 |
| ACCESSORIES | 1 | 1,2 | 1,3 | ONE, TRIM | ONE |
| NOTES | | | | | |
| MARK | F | G | H | | |
| MANUFACTURER | TITUS | TITUS | TITUS | | |
| MODEL | 3000S | 3000R | 3300F | | |
| TYPE | SUPPLY REGISTER | SIDEWALL RETURN GRILLE | FILTERED RETURN GRILLE | | |
| NECK SIZE (L"XW") | 12"X8" | 12"X8" | 24"X8" | | |
| FACE SIZE (L"XW") | 14"X6" | 14"X6" | 28"X8" | | |
| FRAME TYPE | SURFACE MOUNT | SURFACE MOUNT | SURFACE MOUNT | | |
| FRESH | OFF-WHITE | OFF-WHITE | OFF-WHITE | | |
| NOISE CRITERIA LEVEL | <30 | <30 | <30 | | |
| ACCESSORIES | 080 | 080 | 080 | | |
| NOTES | 1 | 1 | 1,2 | | |
| ACCESSORIES | | | | | |
| NOTES | 080-PROPOSED BLADE DAMPER, STR-SQUARE TO ROUND TRANSITION, TRM-RAMP MOUNT FRAME | | | | |
| NOTES | 1) REFER TO SPECIFICATIONS FOR ADDITIONAL REQUIREMENTS 2) PROVIDE NEW PLEATED 1" THICK THROWAWAY FILTERS, AND REPLACE AT START UP 3) THREE WAY THRU | | | | |

THIS SHEET IS PART OF THE CONSTRUCTION DOCUMENTS. OTHER SHEETS INCLUDING SPECIFICATIONS APPLY. THIS SHEET IS SCHEMATIC IN NATURE AND NOT TO BE USED AS A SHOP DRAWING. THEREFORE, INCLUDE ALL MODIFICATIONS REQUIRED TO CONFORM TO SITE CONDITIONS AND THE EQUIPMENT AND MATERIAL USED. VERIFY LOCATIONS AND DIMENSIONS OF ALL ARCHITECTURAL AND STRUCTURAL ELEMENTS AS SHOWN ON THIS SHEET. EXAMINER'S THESE ELEMENTS ARE SHOWN FOR REFERENCE AND SHALL BE VERIFIED PRIOR TO CONSTRUCTION AND THE ENGINEER ASSUMES NO LIABILITY FOR THE ACCURACY OF THESE ELEMENTS. NO DESIGN RESPONSIBILITY IS ASSIGNED FOR ANY PORTION OF THE WORK THAT THE PROFESSIONAL ENGINEER HAS NOT SIGNED AND SCALED PER STATE/PROVINCE REQUIREMENTS.

| NO. | REVISION | DATE |
|-----|----------|------|
| | | |
| | | |
| | | |



CONSULTANT

LB LBI OF NC, PLLC

101 W. 20th Street, Suite 200
Kannon City, MO 64108
North Carolina Certificate of Authorization Number P-1802
7816-997-9601
816-997-9602
Dinkeldteng.com
Copyright 2022



DISCLAIMER:

THIS DRAWING IS AN INSTRUMENT OF SERVICE AND THE PROPERTY OF DISCOUNT TIRE COMPANY AND SHALL REMAIN THEIR PROPERTY. THE USE OF THIS DRAWING SHALL BE RESTRICTED TO THE ORIGINAL SITE FOR WHICH IT WAS PREPARED. PUBLICATION THEREOF IS EXPRESSLY LIMITED TO SUCH.

2700 S. Horner Blvd.
SANFORD, NC 27332

STORE NUMBER:
MCC 43

PROJECT MANAGER:
DANIEL NELMS

PREPARED BY:
LBI OF NC, PLLC
PH: (816) 997-9601
FAX: (816) 997-9602

DRAWN BY:
AMG

SHEET TITLE:
MECHANICAL SCHEDULES

DATE:

SHEET NUMBER:
M3.0

