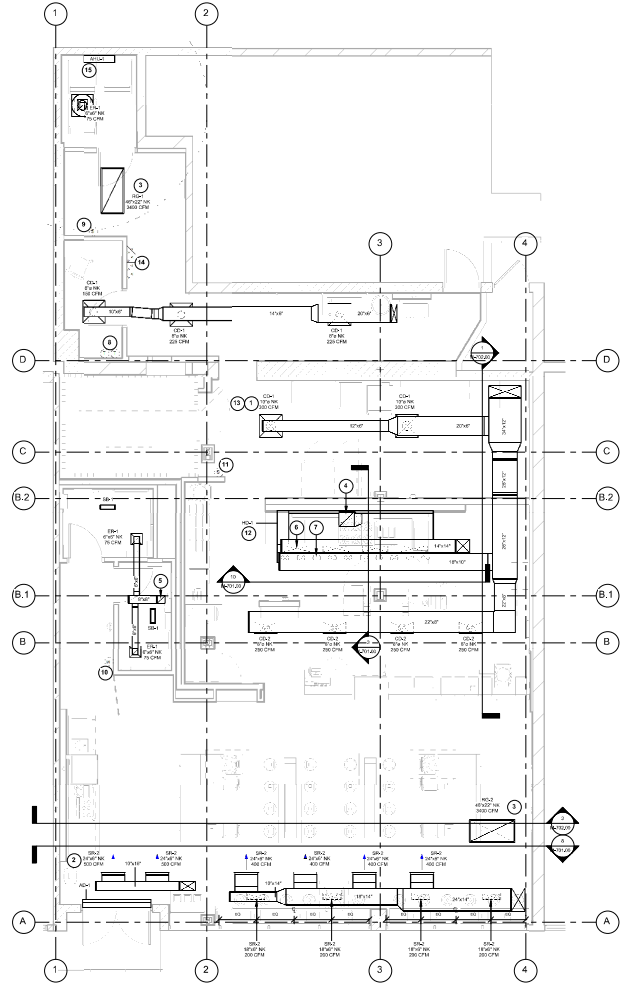


KEYNOTES FOR THIS SHEET 1, 2 ETC.

- 1 SEE ARCHITECTURAL REFLECTED CEILING PLAN FOR CEILING MOUNTED EQUIPMENT LOCATION. TYPICAL.
- 2 PAINT DUCTWORK VISIBLE THROUGH DINING ROOM SUPPLY REGISTERS BLACK. TYPICAL.
- 3 COORDINATE WITH OTHER TRADES TO ENSURE 48" DUCT HAS CLEAR PATH DOWN THROUGH ROOF TO RIG.
- 4 1/2" DUCT UP FROM HOOD THROUGH ROOF TO 8" T COMPLIANT WITH NFPA 96. PROVIDE PADDED ELBOWS WITH AN INNER RADIUS OF 0.5W AT ELBOWS IN GREASE DUCT. PROVIDE DUCT CLEANOUT ACCESS DOOR AT ALL CHANGES IN DIRECTION AND AT ALL LINEAR INTERVALS PER LOCAL CODE.
- 5 8" DUCT UP THROUGH ROOF TO EF-2. SEE DETAIL 6M-701.
- 6 28" DUCT DOWN TO MAKEUP AIR PSP DUCT CONNECTION. TRANSITION TO SUPPLY PLENUM OPENING SIZE. TYPICAL FOR 4.
- 7 10" DUCT DOWN TO AC PSP DUCT CONNECTION. TRANSITION TO SUPPLY PLENUM OPENING SIZE. TYPICAL. CAP UNUSED DUCT CONNECTIONS.
- 8 INSTALL SINGLE-SENS VERTICAL 1/8" X 1/8" GRIDPOINT THERMOSTATS FURNISHED BY TEMS FOR RTU-1 AND RTU-2 AT THIS LOCATION AT 48" AFF. COORDINATE WITH ELECTRICAL SWITCHING IN THIS AREA. PROVIDE WIRING AS SHOWN IN DETAIL 6E710. LABEL THERMOSTAT WITH CORRESPONDING UNIT.
- 9 INSTALL GRIDPOINT ZONE SENSOR MODULE FURNISHED BY TEMS FOR RTU-1 AT THIS LOCATION AT 60" AFF DIRECTLY TO WALL (NO JUNCTION BOX). COORDINATE LOCATION WITH EQUIPMENT. PROVIDE WIRING AS SHOWN IN DETAIL 6E710. LABEL SENSOR WITH CORRESPONDING UNIT.
- 10 INSTALL GRIDPOINT ZONE SENSOR MODULE FURNISHED BY TEMS FOR RTU-2 AT THIS LOCATION AT 60" AFF DIRECTLY TO WALL (NO JUNCTION BOX). COORDINATE LOCATION WITH EQUIPMENT. PROVIDE WIRING AS SHOWN IN DETAIL 6E710. LABEL SENSOR WITH CORRESPONDING UNIT.
- 11 INSTALL REMOTE TEMPERATURE SENSOR FOR HOOD RHT-1 AT THIS LOCATION AT 60" AFF. COORDINATE LOCATION WITH EQUIPMENT. PROVIDE 0.1875" THERMOSTOR CABLE FROM TEMPERATURE SENSOR TO HOOD CONTROL PANEL. LABEL SENSOR "RHT-1".
- 12 INSTALL KITCHEN HOOD HKT-1. SUPPORT HOOD PER MANUFACTURER'S INSTALLATION INSTRUCTIONS AND AS DETAILED IN THE ARCHITECTURAL AND STRUCTURAL DRAWINGS. INSTALL HOOD ACCORDING TO THE REQUIREMENTS OF ITS LISTING. IN COMPLIANCE WITH NFPA 96, THE BUILDING CODE, AND AUTHORITIES HAVING JURISDICTION, HOOD SHALL HAVE AN INTEGRAL DUCT COLLAR TEMPERATURE SENSOR TO AUTOMATICALLY ENERGIZE THE EXHAUST AND MAKEUP AIR FANS IF COOKING TEMPERATURES ARE DETECTED. EXHAUST DUCT SYSTEM TO BE WELDED OR FACTORY-MANUFACTURED WATER AND AIR TIGHT. INSTALL CLEANOUTS PER CODE AND AS SHOWN. INSTALL HOOD PER DETAILS 4M-700, AND 2, 3, & 6M-701. CHIPOTLE WILL PROVIDE AN INDEPENDENT TESTING AGENCY FOR TESTING THE INTEGRITY OF THE GREASE DUCT SYSTEM.
- 13 PROVIDE SUPPLY DIFFUSER CONNECTION TO SUPPLY SYSTEM PER DETAIL 6M-700. TYPICAL.
- 14 PROVIDE AN INDIVIDUAL REMOTE SMOKE DETECTOR ANNUNCIATOR WITH REMOTE KEY OPERATED RESET. WIRE A UNIT BACK TO EACH SMOKE DETECTOR MOUNT UNIT 60" AFF. LABEL ANNUNCIATOR WITH CORRESPONDING UNIT. TYPICAL.
- 15 RUN CONDENSATE LINE FROM AHU-4 CONDENSATE PUMP TO 6" ABOVE NEAREST FLOOR DRAIN, LOCATED IN THIS ROOM.



HVAC PLAN
SHEET 1 OF 1



STORE NO. 315382
UNION TUBERKE
17563 UNION TUBERKE
QUEBENS, NY 11366

CONSTRUCTION SET
12/04/2024

REV. DATE DESCRIPTION
03.28.2024 ISSUE FOR PERMIT



REGISTERED PROFESSIONAL ENGINEER
JAMES J. ...
MECHANICAL ENGINEER
STATE OF NEW YORK

PROJECT NO.
HVAC FIRST FLOOR
PLAN

M-100.00
2 OF 15

DO NOT SCALE - 08/25/23 02

2024-08/27/2024-14



STORE NO. 3115382
 UNION TOWNSHIP
 17663 UNION TURNPIKE
 QUEENSBURG, NY 11356

CONSTRUCTION SET
 12/04/2024

REV. DATE DESCRIPTION
 03.28.2024 ISSUE FOR PERMIT



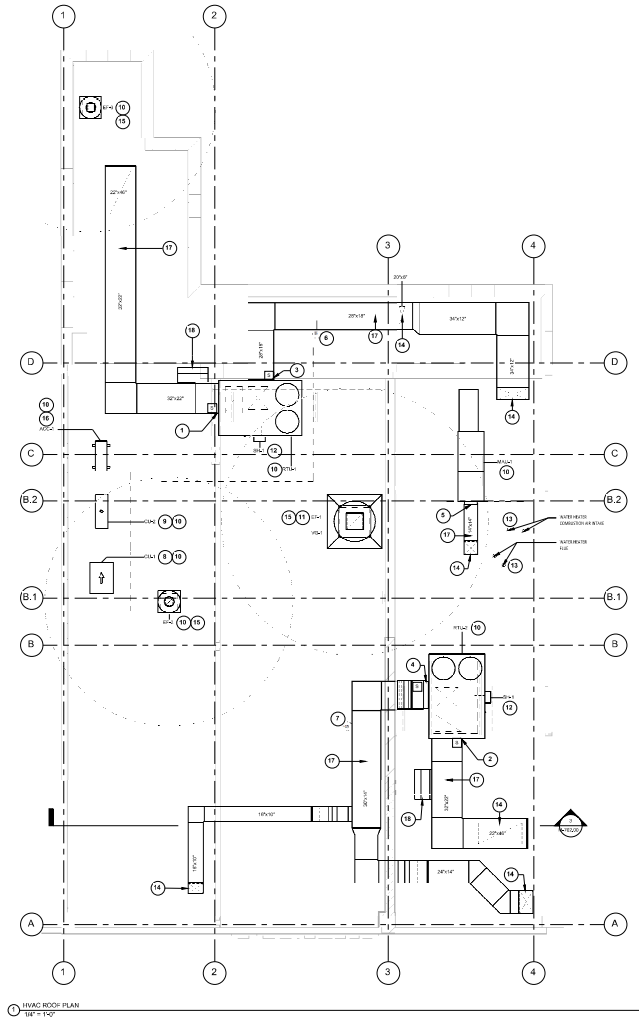
REGISTERED PROFESSIONAL ENGINEER
 MECHANICAL ENGINEERING
 JAMES J. DELUCA
 No. 12008
 STATE OF NEW YORK

HVAC ROOF PLAN

M-101.00
 3 OF 15

DO NOT SCALE

- KEYNOTES FOR THIS SHEET 1, 2, ETC.**
- 3202Z TRANSITION TO RTU-1 RETURN CONNECTION ON END OF UNIT. RTU-1 SHALL HAVE A FIELD FURNISHED AND INSTALLED SMOKE DETECTOR MOUNTED IN THE RETURN AIR STREAM. INTERLOCK SMOKE DETECTOR TO RTU-1 OPERATION.
 - 3202Z TRANSITION TO RTU-2 RETURN CONNECTION ON END OF UNIT. RTU-2 SHALL HAVE A FIELD FURNISHED AND INSTALLED SMOKE DETECTOR MOUNTED IN THE RETURN AIR STREAM. INTERLOCK SMOKE DETECTOR TO RTU-2 OPERATION.
 - 2010 TRANSITION TO RTU-1 SUPPLY CONNECTION ON SIDE OF UNIT. RTU-1 SHALL HAVE AN INTEGRAL SMOKE DETECTOR MOUNTED IN THE SUPPLY AIR STREAM. INTERLOCK SMOKE DETECTOR TO RTU-1 OPERATION.
 - 3214 TRANSITION TO RTU-2 SUPPLY CONNECTION ON SIDE OF UNIT. RTU-2 SHALL HAVE AN INTEGRAL SMOKE DETECTOR MOUNTED IN THE SUPPLY AIR STREAM. INTERLOCK SMOKE DETECTOR TO RTU-1 OPERATION.
 - 1414 TRANSITION TO WALK-IN SUPPLY CONNECTION ON REAR OF UNIT.
 - INSTALL GRIDPOINT SUPPLY PROBE FURNISHED BY TENS FOR RTU-1 IN THE SUPPLY DUCTWORK UPSTREAM FROM THE FIRST BRANCH CONNECTION. PROVIDE WEATHERPROOF ENCLOSURE & VERIFY PREFERRED INSTALLATION WITH CHIPOTLE CM. PROVIDE WIRING AS SHOWN IN DETAIL B/E/10.
 - INSTALL GRIDPOINT SUPPLY PROBE FURNISHED BY TENS FOR RTU-2 IN THE SUPPLY DUCTWORK UPSTREAM FROM THE FIRST BRANCH CONNECTION. PROVIDE WEATHERPROOF ENCLOSURE & VERIFY PREFERRED INSTALLATION WITH CHIPOTLE CM. PROVIDE WIRING AS SHOWN IN DETAIL B/E/10.
 - INSTALL REMOTE CONDENSING UNIT FOR WALK-IN COOLER ON ROOF AS DETAILED IN THE ARCHITECTURAL AND STRUCTURAL DRAWINGS. INSTALL REFRIGERANT LINE SET, THERMOSTATIC EXPANSION VALVE, SOLENOID VALVE, TEMPERATURE CONTROL, SIGHT GLASS, FILTER DRIER, PRESSURE CONTROL, LOW AMBIENT CONTROLS, AND WEATHERPROOF HOUSING, TRAP AND SLOPE REFRIGERANT LINES PER MANUFACTURER'S RECOMMENDATIONS. SEAL PIPING PENETRATIONS THROUGH ROOF. INSTALLATION SHALL COMPLY WITH ASHRAE/ANSI STANDARD 15. INSTALL THE REFRIGERANT LINE SET UNDER THE ROOF DECK TO WITHIN 3'-0" OF THE CONDENSING UNIT. CUT 2-1/2" HOLES IN WALK-IN COOLER ROOF FOR REFRIGERANT LINE SET AND SEAL PER THE COOLER MANUFACTURER'S INSTALLATION INSTRUCTIONS AFTER LINE SET IS INSTALLED.
 - INSTALL REMOTE CONDENSER FOR ICE MACHINE ON ROOF. INSTALL REFRIGERANT LINE SET, THERMOSTATIC EXPANSION VALVE, SOLENOID VALVE, TEMPERATURE CONTROL, SIGHT GLASS, FILTER DRIER, PRESSURE CONTROL, LOW AMBIENT CONTROLS AND WEATHERPROOF HOUSING, TRAP AND SLOPE REFRIGERANT LINES PER MANUFACTURER'S RECOMMENDATIONS. SEAL PIPING PENETRATIONS THROUGH ROOF. INSTALLATION SHALL COMPLY WITH ASHRAE/ANSI STANDARD 15. INSTALL THE REFRIGERANT LINE SET UNDER THE ROOF DECK TO WITHIN 3'-0" OF THE REMOTE CONDENSER. IF REFRIGERANT PIPING TO ICE MACHINE IS EXPOSED TO PUBLIC VIEW, CONCEAL WITHIN A STAINLESS STEEL SHROUD AS SHOWN IN THE ARCHITECTURAL DRAWINGS.
 - INSTALL ROOF TOP EQUIPMENT PER MANUFACTURER'S INSTALLATION INSTRUCTIONS AND AS DETAILED IN THE ARCHITECTURAL AND STRUCTURAL DRAWINGS.
 - INSTALL EXHAUST FAN EF-1 PER DETAIL 5M-700 AND AS DETAILED IN THE ARCHITECTURAL AND STRUCTURAL DRAWINGS. INSTALL GREASE VIROGUARD SYSTEM FURNISHED BY CHIPOTLE ON EXHAUST FAN EF-1.
 - INSTALL REME HALO AIR PURIFIER FURNISHED BY TUV IN RTU PER DETAIL 5M-700. SEE ELECTRICAL DRAWINGS FOR POWER CONNECTION INFORMATION. INSTALL L/V WARNING STICKERS ON FACE OF ENCLOSURE PER DETAIL AND ON ANY RTU ACCESS DOORS THROUGH WHICH THE REME HALO WOULD BE VISIBLE IF OPENED.
 - MAINTAIN 1" CLEARANCE BETWEEN WATER HEATER FLUE TERMINATION AND OUTSIDE AIR INTAKES. MAINTAIN 1" CLEARANCE BETWEEN WATER HEATER COMBUSTION AIR INTAKE AND EXHAUST FAN EF-1 DISCHARGE. SEE PLUMBING DRAWINGS FOR MORE INFORMATION ON WATER HEATER FLUE AND COMBUSTION AIR TERMINATIONS.
 - DUCT PENETRATION THROUGH ROOF. SEE M-100 FOR ADDITIONAL INFO.
 - 10'-0" MIN. CLEARANCE FROM OUTER EDGE OF EXHAUST FAN TO FRESH AIR INTAKES, TYPICAL.
 - INSTALL REMOTE CONDENSER FOR TRASH ROOM SPLIT SYSTEM ON ROOF. INSTALL REFRIGERANT LINE SET, THERMOSTATIC EXPANSION VALVE, SOLENOID VALVE, TEMPERATURE CONTROL, SIGHT GLASS, FILTER DRIER, PRESSURE CONTROL, LOW AMBIENT CONTROLS AND WEATHERPROOF HOUSING, TRAP AND SLOPE REFRIGERANT LINES PER MANUFACTURER'S RECOMMENDATIONS. SEAL PIPING PENETRATIONS THROUGH ROOF. INSTALLATION SHALL COMPLY WITH ASHRAE/ANSI STANDARD 15. INSTALL THE REFRIGERANT LINE SET UNDER THE ROOF DECK TO WITHIN 3'-0" OF THE REMOTE CONDENSER.
 - PROVIDE DUCT INSULATION BOARD ON ALL EXTERIOR DUCT. MINIMUM R-8, WITH ASJ OR FSK FACING. AFTER FACING HAS BEEN INSTALLED, INSTALL ALUMAGUARD FESL AND STICK, SELF-HEALING, UV STABLE, BEFLEX HIGH-DENSITY POLYURETHANE PRODUCTS, INC..
 - INSTALL BAROMETRIC RELIEF HOOD & ASSOCIATED HORIZONTAL ECONOMIZER PER DETAIL 2M-702.



HVAC ROOF PLAN
 1/8\"/>

2024-03M4/791-4

HOOD SHOP DRAWING PRODUCED BY
MANUFACTURER - FOR REFERENCE ONLY

EXHAUST FAN INFORMATION - HUB#70/2626

FAN UNIT NO.	TAG	QTY	FAN UNIT MODEL #	MANUFACTURER	CFM	ESP	HPM	MOTOR ENCL.	HP	PHASE	VOLTS	FLA	OPERATING VELOCITY	WEIGHT (LBS)	W/DS
1	EF-1	1	8000-FA	CAPTIVEAIRE	2550	1.450	3203	ULC-POLYMER	2.000	3	208	7.3	585 FPM	199	16.6
2	EF-2	1	8000-FA	CAPTIVEAIRE	150	0.600	1280	TEAR-TECH	0.250	1	115	2.9		50	6.3
4	EF-3	1	8000-FA	CAPTIVEAIRE	50	0.300	630	TEAR-TECH	0.150	1	115	1.3		49	8.7

MAIN FAN INFORMATION - JDB#075626

FAN UNIT NO.	TAG	QTY	FAN UNIT MODEL #	BLOWER HOUSING	MIN CFM	DESIGN CFM	ESP	HPM	MOTOR ENCL.	HP	PHASE	VOLTS	FLA	NCA	HSCP	WEIGHT (LBS)	W/DS
3	MAU-1	1	AI-3250-HSD	3007-3-HSD	AI-3250	380	130	0.500	0549	TEP-POLYMER	3	208	3.1	3.5A	15A	500	107

GAS FIRED, MAKE-UP AIR UNITS

FAN UNIT NO.	TAG	QTY	UNIT MODEL #	MANUFACTURER	BTU/H	WATER	WATER	WATER	WATER	WATER	WATER	WATER	WATER	WATER	WATER	WATER	WATER	WATER
3	MAU-1	1	8000-FA	8000-FA	7 IN. W.G. = 14 IN. W.G.													

FAN OPTIONS

FAN UNIT NO.	TAG	QTY	DESCRIPTION
1	EF-1	1	1. GREASE BOX 2. REMOVE HONEY KIT LABEL FROM THE FAN BASE 3. 1 YEAR PARTS WARRANTY
2	EF-2	1	1. ICB-300 DAMPER 2. ION WORKING PACKAGE - MANUAL OR 0-SERVE REFERENCE SPEED CONTROL - 4TC - TILED MOTOR, CCV ROTATION 3. 1 YEAR PARTS WARRANTY
3	MAU-1	1	1. INLET PROTECTOR SAUF - 0-30" 2. HANGERS PRECISION SAE - 10 TO 10" MC 3. METRIC BACKSIGHT DAMPER FOR 21-3" HOODING - MEETS AREA LEAST IN MATING 4. 150WATT LEDVANCE WARM PACKAGE, REGULABLE AND USED ONLY FOR ICV OR PREVIEW WITH SPEED - THREE PHASE ONLY 5. 1 YEAR PARTS WARRANTY
4	EF-3	1	1. ION WORKING PACKAGE - MANUAL OR 0-SERVE REFERENCE SPEED CONTROL - 4TC - TILED MOTOR, CCV ROTATION 2. 1 YEAR PARTS WARRANTY

FAN ACCESSORIES

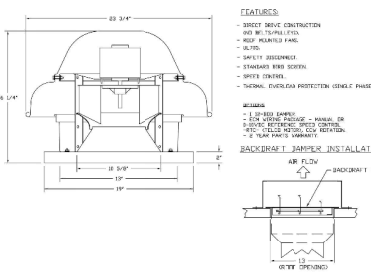
FAN UNIT NO.	TAG	EXHAUST	SUPPLY
1	EF-1	YES	NO
2	EF-2	YES	NO
3	MAU-1	YES	YES
4	EF-3	YES	NO

CURB ASSEMBLIES

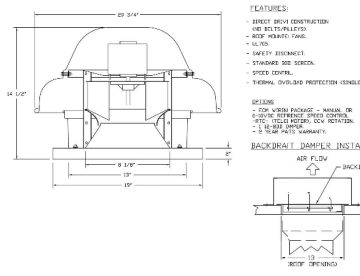
NO.	IN	TAG	VELOCITY	ITEM	SIZE
1	1	EF-1	33 LB	CURB	24.000" X 24.000" X 26.000" VENTED
2	2	EF-2	16 LB	CURB	12.000" X 12.000" X 16.000"
3	4	EF-3	16 LB	CURB	12.000" X 12.000" X 16.000"

FAN NO.	WIRE #	WIRE #	WIRE #	WIRE #	WIRE #
1	WIRE #	WIRE #	WIRE #	WIRE #	WIRE #

6000-FA - CURB FAN (EF-1)



6000-FA - CURB FAN (EF-2)



REVISIONS

NO.	DATE	DESCRIPTION
1		



6-PISTON #5082 QUEENS NY - BD-2 - R1
175-61 Union Turnpike,
Queens, NY, 11366

DATE: 10/2/2024
DWG.#: 70756-02

DRAWN BY:
SCALE: 3/4" = 1'-0"
MASTER DRAWING

SHEET NO. 3



STORE NO. 315382
UNION TURNPIKE
175-61 UNION TURNPIKE
QUEENS, NY 11366

CONSTRUCTION SET
12/04/2024

REV. DATE DESCRIPTION
10.02.2024 ISSUE FOR PERMIT



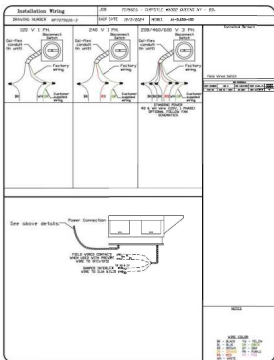
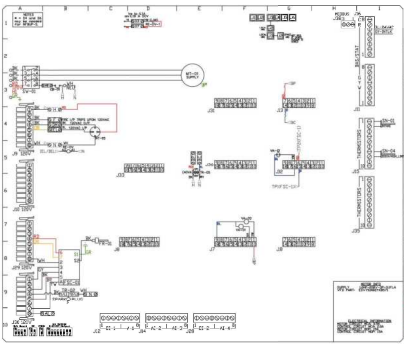
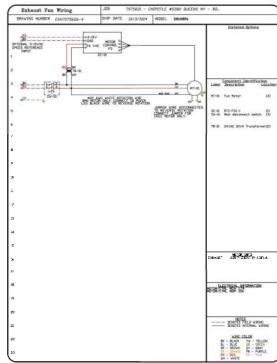
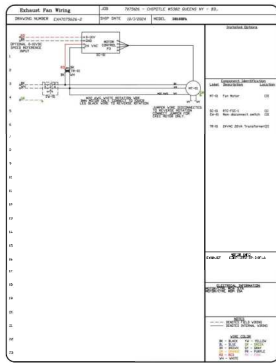
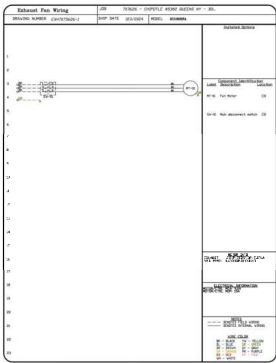
DATE: 10/2/2024
DWG.#: 70756-02
DRAWN BY:
SCALE: 3/4" = 1'-0"
MASTER DRAWING

SHEET NO. 3

M-403.00
6 OF 15

DOA NEW 10/04/2024 08:05:55 03

HOOD SHOP DRAWING PRODUCED BY
MANUFACTURER - FOR REFERENCE ONLY



REVISIONS

NO.	DATE	DESCRIPTION

CAPTIVE WIRE
Highwire Group
4881 Progress Park Rd., Raleigh, NC 27616
TEL: 919.876.2222 FAX: 919.876.2223 EMAIL: info@highwire.com

DATE: 10/3/2024
DWG.#: 3073626
DRAWN BY: [Name]
SCALE: 3/4" = 1'-0"
MASTER DRAWING

SHEET NO. 4

Polaris
214 W. Main Street, Suite 208
Morristown, NJ 07857
908.754.4400

CHIPOTLE MEXICAN GRILL

STORE NO. 315382
UNION TURNPIKE
176-61 Union Turnpike
QUEENS, NY 11366

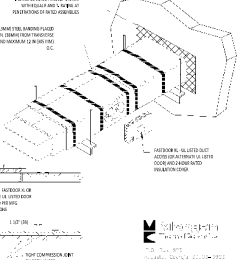
CONSTRUCTION SET
12/04/2024

REV. DATE DESCRIPTION
10.03.2024 ISSUE FOR PERMIT

CAPTIVE WIRE
DRAWINGS

M-404.00
7 OF 15
DOK-MEM-1369-N-00000575-02

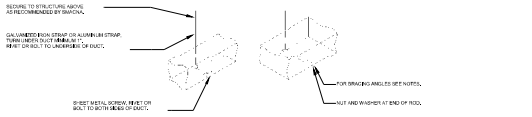
FIRE RATED ENCLOSURE - GREASE DUCTS



1. ENCLOSURE SHALL BE CONSTRUCTED FROM 1/2" THICK TYPE X gypsum board or equivalent fire-rated assembly. TO BE RATED AS PER LISTED APPROVED PRODUCTS AND METHODS OF INSTALLATION.
2. ENCLOSURE SHALL BE CONSTRUCTED FROM 1/2" THICK TYPE X gypsum board or equivalent fire-rated assembly. TO BE RATED AS PER LISTED APPROVED PRODUCTS AND METHODS OF INSTALLATION.
3. ENCLOSURE SHALL BE CONSTRUCTED FROM 1/2" THICK TYPE X gypsum board or equivalent fire-rated assembly. TO BE RATED AS PER LISTED APPROVED PRODUCTS AND METHODS OF INSTALLATION.
4. ENCLOSURE SHALL BE CONSTRUCTED FROM 1/2" THICK TYPE X gypsum board or equivalent fire-rated assembly. TO BE RATED AS PER LISTED APPROVED PRODUCTS AND METHODS OF INSTALLATION.
5. ENCLOSURE SHALL BE CONSTRUCTED FROM 1/2" THICK TYPE X gypsum board or equivalent fire-rated assembly. TO BE RATED AS PER LISTED APPROVED PRODUCTS AND METHODS OF INSTALLATION.

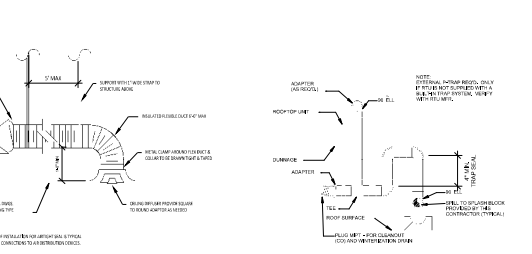
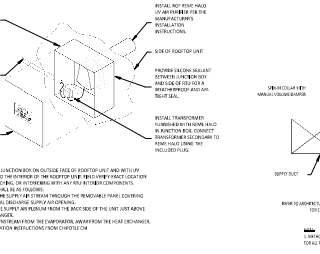
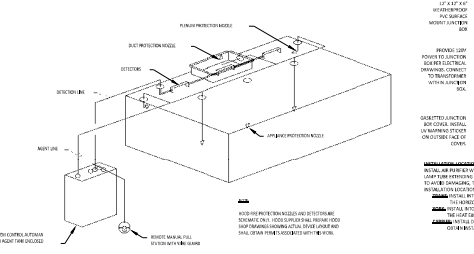
MECHANICAL DUCT HANGER SCHEDULES OF FINISHES

DUCT TYPE	FINISH 1 (STAINLESS)		FINISH 2 (SPRINKLER)		FINISH 3 (PAINTED)		FINISH 4 (SPRINKLER)	
	STRAP	HANGER ROD	STRAP	HANGER ROD	STRAP	HANGER ROD	STRAP	HANGER ROD
FD-101	1/2" GALV.	1/2" GALV. (1/2")	1/2" GALV.	1/2" GALV. (1/2")	1/2" GALV.	1/2" GALV. (1/2")	1/2" GALV.	1/2" GALV. (1/2")
FD-102	1/2" GALV.	3/8"	1/2" GALV.	3/8"	1/2" GALV.	3/8"	1/2" GALV.	3/8"
FD-103	1/2" GALV.	3/8"	1/2" GALV.	3/8"	1/2" GALV.	3/8"	1/2" GALV.	3/8"
FD-104	1/2" GALV.	3/8"	1/2" GALV.	3/8"	1/2" GALV.	3/8"	1/2" GALV.	3/8"
FD-105	1/2" GALV.	3/8"	1/2" GALV.	3/8"	1/2" GALV.	3/8"	1/2" GALV.	3/8"
FD-106	1/2" GALV.	3/8"	1/2" GALV.	3/8"	1/2" GALV.	3/8"	1/2" GALV.	3/8"
FD-107	1/2" GALV.	3/8"	1/2" GALV.	3/8"	1/2" GALV.	3/8"	1/2" GALV.	3/8"
FD-108	1/2" GALV.	3/8"	1/2" GALV.	3/8"	1/2" GALV.	3/8"	1/2" GALV.	3/8"
FD-109	1/2" GALV.	3/8"	1/2" GALV.	3/8"	1/2" GALV.	3/8"	1/2" GALV.	3/8"



1. FIREMASTER DUCT WRAP - UL-HHKT-015
NOT TO SCALE

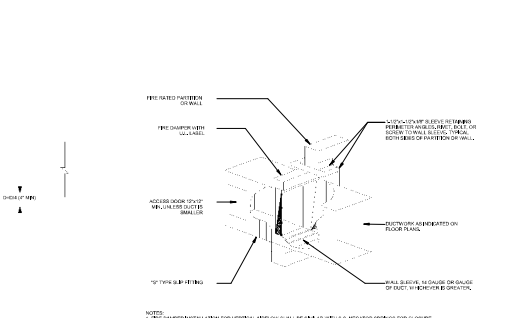
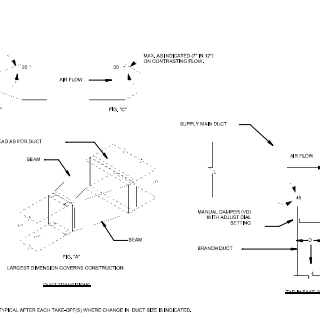
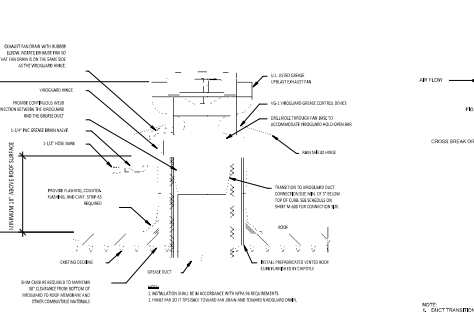
2. HVAC - DUCT HANGER DETAILS
NOT TO SCALE



3. HVAC - FIRE SUPPRESSION SYSTEM SCHEMATIC
NOT TO SCALE

4. FIRE RATED CURB INSTALLATION
NOT TO SCALE

5. HVAC - DIFFUSER CONNECTION
NOT TO SCALE



6. GREASE EXHAUST FAN
NOT TO SCALE

7. HVAC - DUCT TRANSITION DETAILS
NOT TO SCALE

8. HVAC - FIRE DAMPER DETAIL
NOT TO SCALE

Polaris
214 W. Main Street, Suite 208
Morristown, NJ 07957
908.754.4000

CHIPLE
MEXICAN BELL

STORE NO. 315382
UNION TUNBRIDGE
1765 UNION TUNBRIDGE
QUERIES, NY 11366

CONSTRUCTION SET
12/04/2024

REV. DATE DESCRIPTION
02/28/2024 ISSUE FOR PM/MT

REVISED BY: [Signature]
DATE: 02/28/2024
PROJECT NO.: 2300
REVISED BY: [Signature]
DATE: 02/28/2024

HVAC DETAILS

M-700.00

13 OF 15

000-MOR-1000-N-000000-01

