

AIR DOOR SCHEDULE								
MARK	CFM	VELOCITY	HEATING CAP	HP	AREA SERVED	MODEL	MANUFACTURER	REMARKS
ADM	1765	2670 FPM	10 KW	3/4	DRIVE THRU	CHA-H40E	POWERED-AIRE	1235
AD#2	197	2443 FPM	10 KW	3/4	DRIVE THRU	CHA-H36E	POWERED-AIRE	123
NOTES	<ul style="list-style-type: none"> CHICK-FIL-A HAS A NATIONAL ACCOUNT WITH TOM BARRON COMPANY FOR THE AIR DOORS. THE MECHANICAL CONTRACTOR SHALL PURCHASE THE AIR DOORS DIRECTLY FROM TOM BARRON COMPANY. CONTACT MR. SCOTT GEORGE AT 404-351-0100 FOR PRICING AND AVAILABILITY. AIR DOORS NOT PURCHASED THRU TOM BARRON COMPANY WILL NOT BE ACCEPTED. 							
REMARKS	<ol style="list-style-type: none"> FACTORY PROVIDED, WIRED, AND UNIT MOUNTED SPEED CONTROLLER LOCATED ABOVE CEILING. FACTORY WIRED DISCONNECT. FACTORY PROVIDED, FIELD INSTALLED BY MC. REMOTE IN ALL SWITCHES FOR HEATING ON/OFF AND FAN ON/OFF TO SWITCH. SEE DETAIL, AIR CURTAIN WIRING DIAGRAM. FACTORY PROVIDED MAGNETIC DOOR CONTACT WITH FACTORY INSTALLED LOW VOLTAGE CONTROLS LOCATED IN AIR DOOR CABINET. PROVIDE WITH A DIVERTER BOX. 							

DUCTLESS SPLIT SYSTEM HEAT PUMP UNIT SCHEDULE													
MARK	COOLING CAPACITY (MBH)		EFFICIENCIES		FAN SECTION (CFM)	ELECTRICAL DATA			R-40A MODEL		MFR	WEIGHT	
	MIN	MAX	SEER	SUPPLY		CIRCUIT AMPACITY	MOCP	VOLTAGE	AHU	CU		AHU	CU
AHUM/CMH (NEW)	110	39.0	18.6	699-830	2.4	35	208/1/60	AC036RNDCH	AC036RKHCH	SAMSUNG	40.6 LBS	189.6 LBS	
NOTES	<ul style="list-style-type: none"> MECHANICAL CONTRACTOR SHALL PURCHASE THE SPLIT SYSTEM HEAT PUMP THROUGH POWERS OF ARKANSAS (POA) CONTACT CHAD FISHER WITH POA AT 479-927-9999 												
REMARKS	<ol style="list-style-type: none"> ELECTRICIAN TO PROVIDE NON-FUSED DISCONNECT. MECHANICAL TO PROVIDE AND INSTALL REFRIGERANT PIPING AS PER MFR RECOMMENDATIONS. PROVIDE ENGRAVED PLASTIC LABEL AT AHU1 AND CU1 WITH HIGH WHITE LETTERS ON A BLACK BACKGROUND RIVETED TO UNIT CABINET. PROVIDE WITH ADEQUATE REFRIGERANT LINE SET. FIELD VERIFY DISTANCE FROM WHERE CONDENSER IS TO BE SET TO AIR HANDLER LOCATION PRIOR TO ORDERING. PROVIDE WITH FACTORY WIRED 7-DAY PROGRAMMABLE WALL THERMOSTAT, MODEL MWR-WG00LN. PROVIDE WITH FACTORY FRONT AND BACK WIND Baffles FOR LOW AMBIENT CONDITIONS. 												

4. SECTION C15000 - MECHANICAL SPECIFICATIONS

SECTION C15000 ELECTRICAL GENERAL PROVISIONS

PART 1 - GENERAL

- 1.01 WORK INCLUDED
- A. PROVIDE ALL MATERIALS, LABOR AND EQUIPMENT REQUIRED TO FINISH AND INSTALL A COMPLETE ELECTRICAL SYSTEM AS INDICATED ON DRAWINGS AND AS SPECIFIED HEREIN.
- 1.02 REGULATORY REQUIREMENTS
- A. EQUIPMENT FURNISHED SHALL BE UL LISTED WHERE SUCH LABEL IS AVAILABLE. INSTALLATION SHALL CONFORM TO UL WHERE APPLICABLE. STANDARDS
- B. ELECTRICAL WORK SHALL BE INSTALLED IN ACCORDANCE WITH DRAWINGS AND SPECIFICATIONS, NEC AND NFPA CODES IN EFFECT AT PROJECT LOCATION, STATE AND LOCAL ELECTRICAL AND BUILDING CODES AND SPECIAL CODES HAVING JURISDICTION OVER SPECIFIC PORTIONS WITHIN COMPLETE INSTALLATION.
- C. OBTAIN PERMITS AND CERTIFICATES OF APPROVAL FROM ALL AUTHORITIES HAVING JURISDICTION OVER THE INSTALLATION AND PAY ALL FEES REQUIRED.
- 1.03 SUBMITTALS
- A. SUBMIT LIST OF MATERIALS AND EQUIPMENT PRIOR TO MANUFACTURE. ORDER OR INSTALLATION AND WITHIN TWENTY DAYS AFTER AWARD OF CONTRACT FOR APPROVAL. INCLUDE EACH ITEM OF MATERIAL AND EQUIPMENT WHETHER OR NOT SHOP DRAWINGS ARE ALSO REQUIRED. LIST SHALL INCLUDE NAME OF MANUFACTURER, CATALOG NUMBER AND OTHER COMPLETE IDENTIFICATION AS WELL AS DIMENSIONS AND DETAILED DATA. SUBMITTALS SHALL INCLUDE FOR THE FOLLOWING:
- LIGHTING FIXTURES
 - PANELBOARDS/BREAKERS
 - WIRING DEVICES AND DEVICE PLATES
 - ENCLOSED SWITCHES
- B. CERTIFIED SHOP DRAWINGS AND SUBMITTALS SHALL BEAR STAMP OF APPROVAL OF CONTRACTOR AS EVIDENCE THAT DRAWINGS HAVE BEEN CHECKED. DRAWINGS SUBMITTED WITHOUT THIS STAMP OF APPROVAL WILL NOT BE CONSIDERED AND WILL BE RETURNED FOR PROPER RESUBMISSION.
- C. IF SUBMITTALS SHOW VARIANCES OR SUBSTITUTIONS FROM REQUIREMENTS OF CONTRACT, CONTRACTOR SHALL MAKE SPECIFIC MENTION OF SUCH VARIATION IN HIS LETTER OF TRANSMITTAL IN ORDER THAT, IF ACCEPTABLE, SUITABLE ACTION MAY BE TAKEN FOR PROPER ADJUSTMENT. OTHERWISE CONTRACTOR SHALL NOT BE RELIEVED OF RESPONSIBILITY FOR EXECUTING WORK IN ACCORDANCE WITH CONTRACT EVEN THOUGH SUCH SUBMITTALS HAVE BEEN APPROVED.
- 1.04 SITE VISIT
- A. VISIT JOB SITE PRIOR TO BID DATE TO DETERMINE ACTUAL CONDITIONS UNDER WHICH WORK SHALL BE DONE. TO FAMILIARIZE ONESELF WITH PROJECT AND TO VERIFY TOTAL SCOPE OF WORK REQUIRED. FAILURE TO DO SO SHALL NOT CONSTITUTE A REASON FOR AN EXTRA CHARGE.

SECTION C15000 OUTLET AND JUNCTION BOXES

PART 1 - GENERAL

- 1.01 PROJECT CONDITIONS
- A. VERIFY FIELD MEASUREMENTS ARE AS SHOWN ON DRAWINGS.
- B. VERIFY LOCATIONS OF FLOOR BOXES AND OUTLETS IN WORK AREAS PRIOR TO ROUGH-IN.
- PART 2 - PRODUCTS
- 2.01 OUTLET BOXES
- A. SHEET METAL OUTLET BOXES: GALVANIZED STEEL.
- B. CAST BOXES: TYPE FS, CAST FERROUS. PROVIDE GASKETED COVER BY BOX MANUFACTURER.
- C. MANUFACTURERS: NATIONAL, APPLETON, GENERAL ELECTRIC, RACO, OR STEEL CITY.
- D. PROVIDE BOXES FOR FIXTURES WITH FIXTURE STUDS IN CENTER.
- E. OUTLET BOXES FOR LIGHTING, SWITCHES AND RECEPTACLES IN INTERIOR AREAS WITH EXPOSED CONDUIT SHALL BE PRESSED STEEL AND IN EXTERIOR AREAS WITH EXPOSED CONDUIT SHALL BE CAST METAL WITH THREADED HLBS, 'FS' TYPE. USE GALVANIZED STEEL FOR CONCEALED BOXES. BOXES SHALL BE 1/2" DEEP MINIMUM.

2.02 PULL AND JUNCTION BOXES

- A. SHEET METAL BOXES: GALVANIZED STEEL.
- B. SURFACE-MOUNTED CAST METAL BOX: TYPE 4, FLAT-FLANGED, SURFACE-MOUNTED JUNCTION BOX.
- MATERIAL: GALVANIZED CAST IRON.
 - COVER: FURNISH WITH GROUND FLANGE, NEOPRENE GASKET, AND STAINLESS STEEL COVER SCREWS.
- C. IN-GROUND CAST METAL BOX: INSIDE FLANGED, RECESSED COVER BOX FOR FLUSH MOUNTING.
- MATERIAL: GALVANIZED CAST IRON.
 - COVER: NONSKID COVER WITH NEOPRENE GASKET AND STAINLESS STEEL COVER SCREWS.
 - COVER LEGEND: ELECTRIC.
- D. MANUFACTURERS: NATIONAL, APPLETON, GENERAL ELECTRIC, RACO, OZ-GEDEY OR STEEL CITY.

PART 3 - EXECUTION

- 3.01 INSTALLATION
- A. INSTALL ELECTRICAL BOXES AS SHOWN ON DRAWINGS, AND AS REQUIRED FOR SPLICES, TAPS, WIRE PULLING, EQUIPMENT CONNECTIONS AND COMPLIANCE WITH REGULATORY REQUIREMENTS.
- B. INSTALL PULL BOXES AND JUNCTION BOXES ABOVE ACCESSIBLE CEILINGS.
- C. INACCESSIBLE CEILING AREAS: INSTALL OUTLET AND JUNCTION BOXES NO MORE THAN 6 INCHES FROM CEILING ACCESS PANEL OR FROM REMOVABLE RECESSED LIGHT FIXTURE.
- D. USE FLUSH MOUNTING OUTLET BOXES IN FINISHED AREAS.
- E. USE STAMPED STEEL BRIDGES TO FASTEN FLUSH MOUNTING OUTLET BOX BETWEEN STUDS.
- F. INSTALL FLUSH MOUNTED BOX WITHOUT DAMAGING WALL INSULATION OR REDUCING ITS EFFECTIVENESS.
- G. USE ADJUSTABLE STEEL CHANNEL FASTENERS FOR HUNG CEILING OUTLET BOX.

- H. DO NOT FASTEN BOXES TO CEILING SUPPORT WIRES.
- I. SUPPORT BOXES INDEPENDENTLY OF CONDUIT, EXCEPT CAST BOX THAT IS CONNECTED TO TWO RIGID METAL CONDUITS BOTH SUPPORTED WITHIN 12 INCHES OF BOX.
- J. USE GANG BOX WHERE MORE THAN ONE DEVICE IS MOUNTED TOGETHER. DO NOT USE SECTIONAL BOX.
- K. USE GANG BOX WITH PLASTER RING FOR SINGLE DEVICE OUTLETS.
- L. USE CAST OUTLET BOX IN EXTERIOR LOCATIONS AND WET LOCATIONS.
- 3.02 OUTLET BOXES
- A. SELECT BOXES ACCORDING TO INTENDED USE AND TYPE OF OUTLET. CEILING OUTLET BOXES SHALL BE 4" OCTAGON AND 1/2" DEEP. USE 2-1/8" DEEP OCTAGON BOXES OR 4" SQUARE BOXES REQUIRED. ALL CEILING OUTLET BOXES SHALL HAVE A FIXTURE STUD OF NO BOLT SELF-LOCKING TYPE INSTALLED IF REQUIRED TO HANG THE FIXTURE SPECIFIED AT THE OUTLET.
- 3.03 JUNCTION BOXES
- A. JUNCTION BOXES SHALL BE SIZED ACCORDING TO NUMBER OF CONDUCTORS IN BOX OR TYPE OF SERVICE TO BE PROVIDED. MINIMUM JUNCTION BOX SIZE 4-1/16" SQUARE AND 2-1/8" DEEP. PROVIDE SCREW COVERS FOR JUNCTION BOXES.
- B. USE CODE GAUGE STEEL WITH SCREW COVERS FOR PULL BOXES WITH PRIME COAT AND PROVIDE WITH SCREW COVER. SIZE PULL BOXES ACCORDING TO THE NEC.
- C. PROVIDE PULL BOX EVERY 100 FEET OF CONDUIT RUN OR WHERE EXCESSIVE NUMBER OF BENDS NECESSITATES A BOX FOR EASE OF WIRE INSTALLATION.

FIELD VERIFY ALL CONDITIONS

NOTE: AS NOTED IN THE SPECIFICATIONS, ALL WIRING LAYOUTS, LAYOUTS ARE SCHEMATIC. EXACT LOCATIONS SHALL BE DETERMINED BY THE CONSTRUCTION AND STRUCTURE OF THE BUILDING AND SHALL BE VERIFIED AND COORDINATED IN THE FIELD. EACH TRADE CONTRACTOR SHALL VERIFY WITH THE GENERAL CONTRACTOR THAT HE HAS THOROUGHLY REVIEWED AND COORDINATED ALL LOCATIONS AND ROUTINGS WITH ALL OTHER TRADES PRIOR TO FABRICATION OF CONDUITS, DUCTS, OR PIPING, AND START OF INSTALLATION OF SAME (INCLUDING SPRINKLER PIPING WHEN PRESENT ON JOB). ANY INSTALLATION OR CONSTRUCTION CONFLICTS WHICH OCCUR IN THE FIELD SHALL BE RESOLVED BY THE TRADE CONTRACTOR TO THE SATISFACTION OF THE OWNER AND ARCHITECT AND AT NO EXPENSE TO THE OWNER, ARCHITECT AND/OR GENERAL CONTRACTOR.

THE CONTRACTOR SHALL CONTACT THE ARCHITECT, ENGINEER OR OWNER PRIOR TO BIDDING FOR INTERPRETATIONS AND CLARIFICATIONS OF THE DESIGN AND INCLUDE IN HIS BID ALL COSTS TO MEET THE DESIGN INTENT. CLARIFICATIONS MADE BY THE ARCHITECT, ENGINEER OR OWNER AFTER BIDDING WILL BE FINAL AND SHALL BE IMPLEMENTED AT CONTRACTORS COST.

BIDDING CONTRACTORS SHALL HAVE A WORKING KNOWLEDGE OF LOCAL CODES AND ORDINANCES AND SHALL INCLUDE IN THEIR BIDS THE COSTS FOR ALL WORK INSTALLED IN STRICT ACCORDANCE WITH GOVERNING CODES, THE PLANS AND SPECIFICATIONS. NOT WITHSTANDING, THE CONTRACTOR SHALL ALERT ARCHITECT, ENGINEER OR OWNER OF ANY APPARENT DISCREPANCIES BETWEEN GOVERNING CODES AND DESIGN INTENT.

NATIONAL ACCOUNTS

1.	PRICE AIR DEVICES - THE MECHANICAL CONTRACTOR IS REQUIRED TO PURCHASE THE AIR DEVICES DIRECTLY FROM TOM BARRON COMPANY. CONTACT MR. SCOTT GEORGE AT 404-351-0100 FOR PRICING AND AVAILABILITY. AIR DEVICES NOT PURCHASED THRU TOM BARRON COMPANY WILL NOT BE ACCEPTED.
2.	AIR DOORS - THE MECHANICAL CONTRACTOR IS REQUIRED TO PURCHASE THE AIR DOORS DIRECTLY FROM TOM BARRON COMPANY. CONTACT MR. SCOTT GEORGE AT 404-351-0100 FOR PRICING AND AVAILABILITY. AIR DOORS NOT PURCHASED THRU TOM BARRON COMPANY WILL NOT BE ACCEPTED.



Chick-fil-A
Chick-fil-A

5200 Buffington Road
Atlanta, Georgia
30349-2998



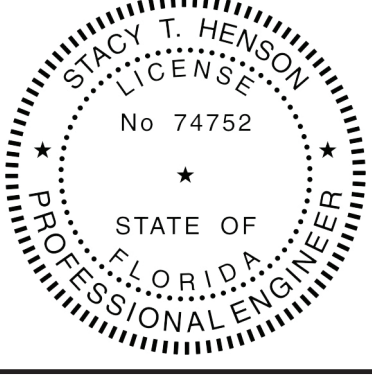
INTERPLAN LLC

AP99238
CA 8660

ARCHITECTURE
ENGINEERING
PERMITTING

220 E. CENTRAL PKWY, STE 4000
ALTAMONTE SPRINGS, FL 32701
407.645.5008

SFAI



This item has been digitally signed and sealed by Stacy Henson on the date adjacent to the seal. Printed copies of this document are not considered signed and sealed, and the signature must be verified on any electronic copies.

CHICK-FIL-A
NAVY BLVD

510 N. NAVY BLVD
PENSACOLA, FL 32507

FSU#03072

BUILDING TYPE / SIZE: SOB

RELEASE:

PRINTED FOR:

Construction

REVISION SCHEDULE

NO.	DATE	DESCRIPTION

CONSULTANT PROJECT # 2022.0884

DATE FEBRUARY 2023

DRAWN BY AE

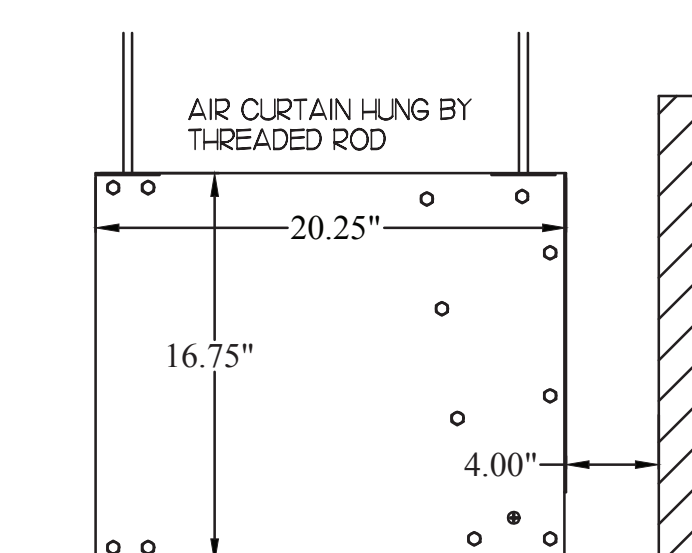
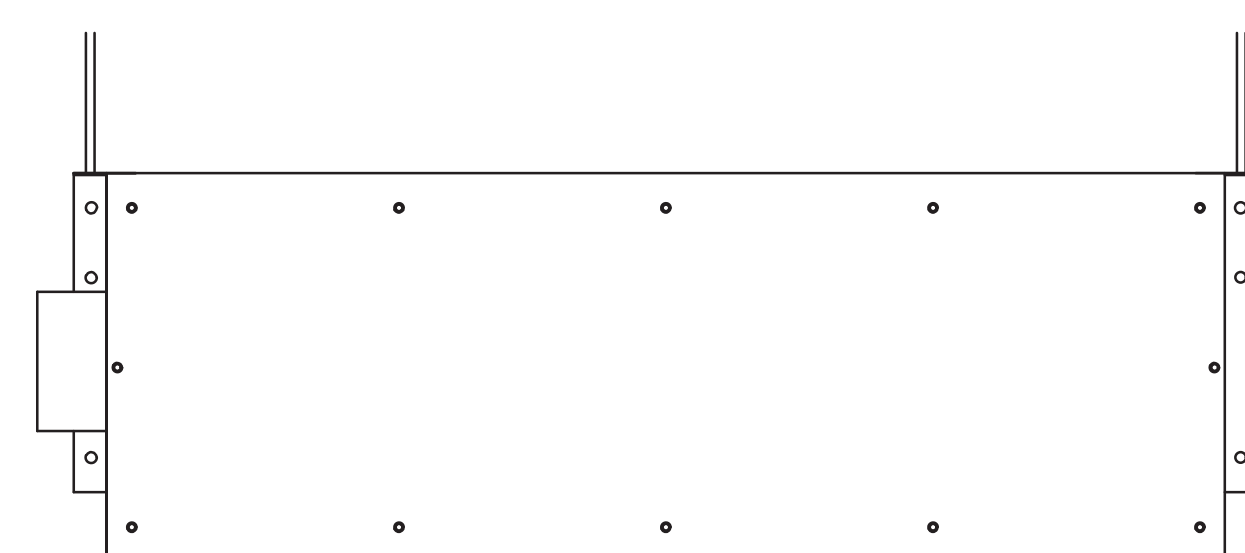
CHECKED BY DAK

Information contained on this drawing and in all digital files provided for above named project may not be reproduced in any manner without express written or verbal consent from the project representatives.

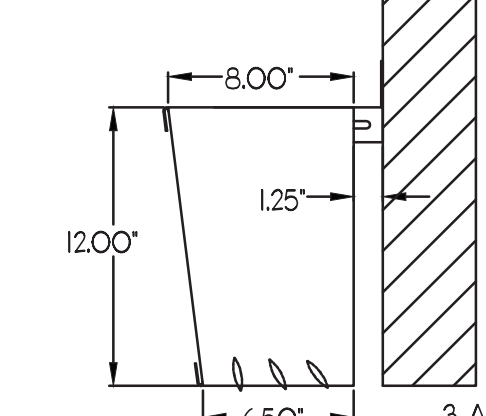
MECH. SPECIFICATIONS & SCHEDULES

SHEET NUMBER

M2.1



AIR CURTAIN TO BE MOUNTED AS CLOSE TO WALL AS POSSIBLE. THERE WILL LIKELY BE AT LEAST 4" BETWEEN THE MAIN AIR CURTAIN CABINET AND THE WALL TO ACCOUNT FOR THE AIR CURTAIN GRILL AND A PORTION OF CEILING BETWEEN THE WALL AND THE AIR CURTAIN.



1.25" OFFSET SHOWN. BRACKETS CAN BE ADJUSTED FOR A 0" TO 3" OFFSET. DIVERTER BOX SHOULD BE AS CLOSE TO DOOR HEADER AS POSSIBLE.

3 ADJUSTABLE STEERING VANES TO BE ADJUSTED WITH THE ONE CLOSEST TO THE WALL AT THE SHARPEST ANGLE TO DIVERT AIR OUT OF THE OPENING ALONG THE ENTIRE OPENING HEIGHT.

1 AIR CURTAIN AND AIR DIVERTER BOX MOUNTING

NO SCALE

CLEARANCE NOTE:

CONTRACTOR TO VERIFY THICKNESS OF ROOF ASSEMBLY. 18" CLEARANCE REQUIRED FROM BOTTOM OF SUPPORT RACK STRUCTURAL MEMBER TO TOP OF ROOF ASSEMBLY. IF ANY PIECE OF EQUIPMENT MOUNTED ON RACK EXCEEDS 36" IN THE LATERALLY MOUNTED DIMENSION, THE CLEARANCE NEEDS TO BE INCREASED TO 24".

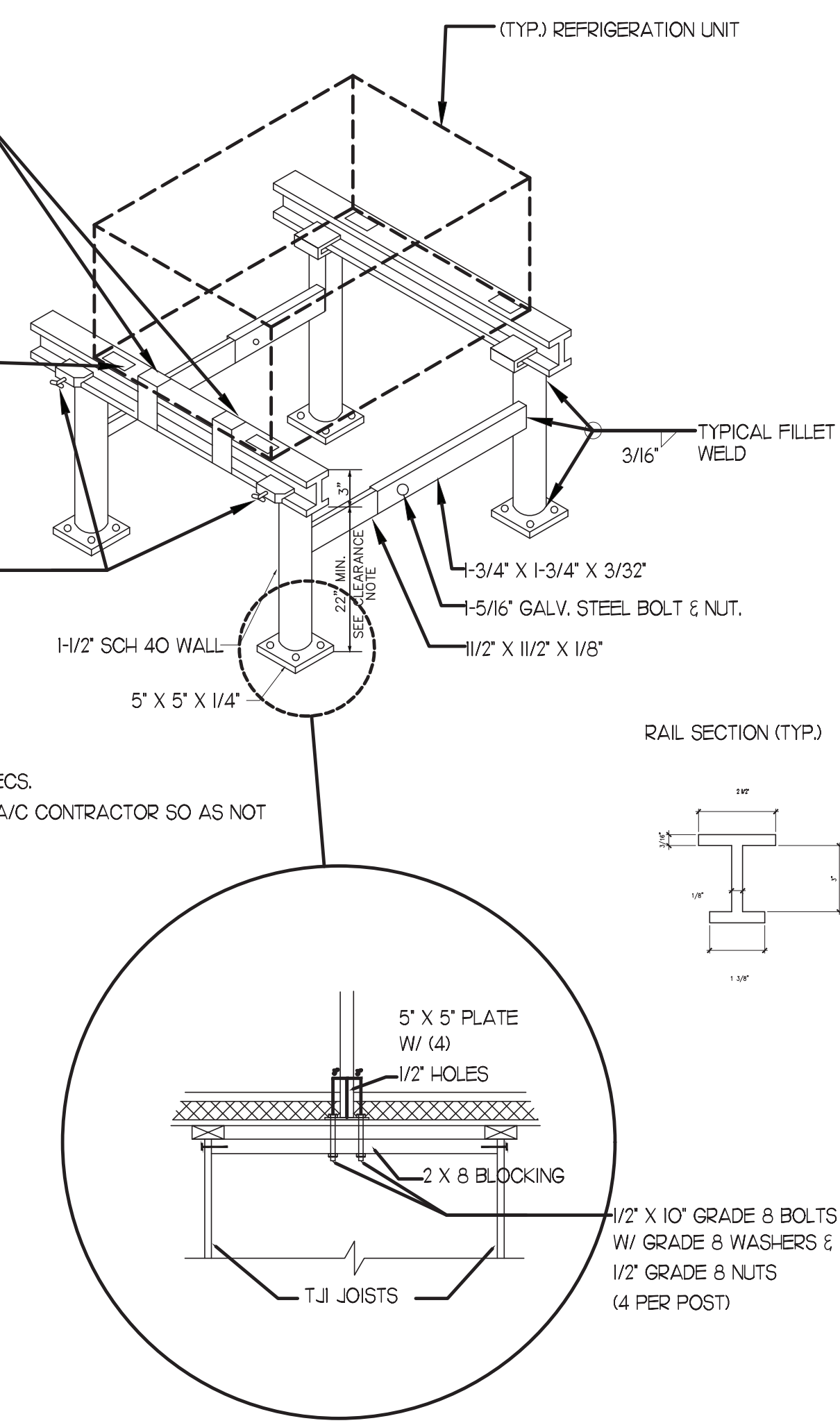
- PROVIDE 4-22 GA- 1 1/8" WIDE HURRICANE STRAPS PER REF. UNIT.
- A) 2-3/8" X 3/4" LONG A307 STEEL GALV. BOLTS AND NUTS FASTENED TO WEB OF ALUMINUM STAND RAIL.
- B) 3-10-16 X 3/4" HWH #3 SELF DRILLING HILTI KWIK-FLEX SCREWS TO WEB OF ALUMINUM STAND RAIL.

- PAD (TYP.) BY A/C CONTRACTOR
- EXAMPLES :
- RUBBER VIBRATION PAD (RP, 3/4" - 2"X2")
- (RP, 3/8" - 2"X2")

- 1/4" X 3/4" GALVANIZED STEEL THUMBSCREW TIGHTEN WITH TORQUE WRENCH TO REFUSAL.

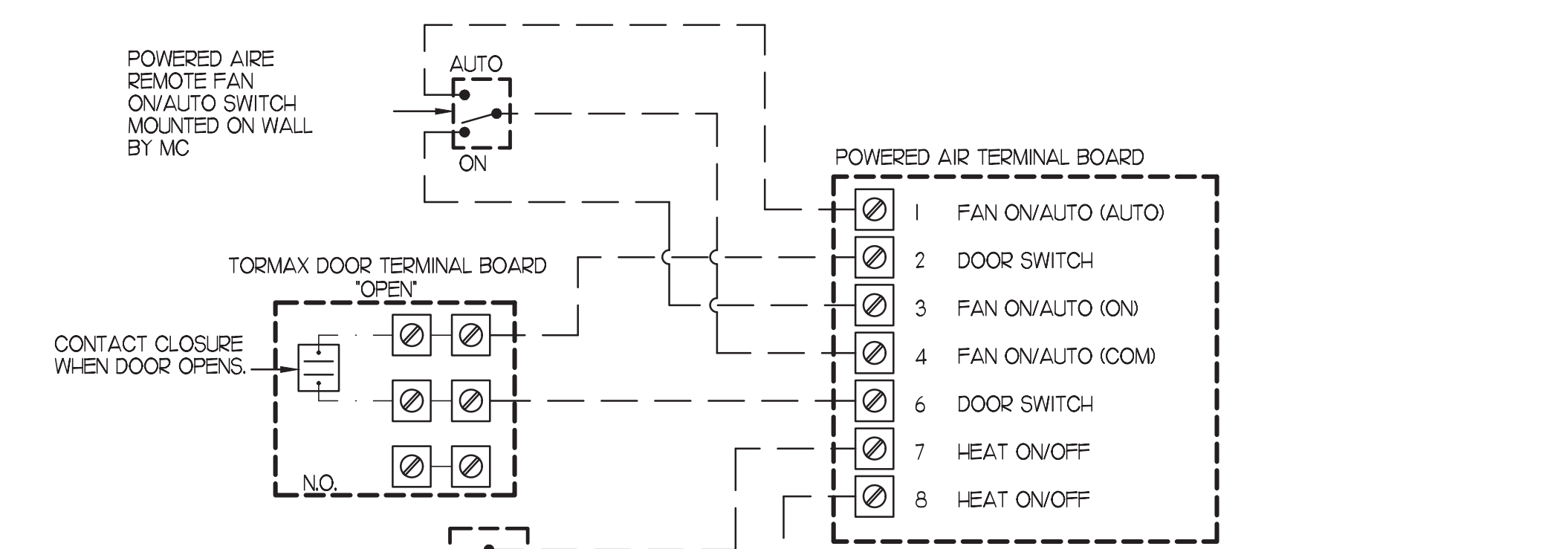
NOTES:

- ALL CONSTRUCTION TO MEET ALUMINUM ASSOCIATION SPECS.
- VIBRATION INSULATOR PADS SHALL BE PROVIDED BY THE A/C CONTRACTOR SO AS NOT TO CAUSE VIBRATION TO EXISTING SUB-STRUCTURE.
- ALUMINUM EQUIPMENT STAND SUPPORTS AS MANUFACTURED BY AVCOA CORPORATION OF FORT LAUDERDALE, FLA. OR APPROVED EQUAL STANDS SHALL PROVIDE 18" MINIMUM CLEARANCE AND SHALL BE SIZED AND INSTALLED ACCORDING TO THE MANUFACTURERS LOAD CHARTS AND PRINTED INSTALLATION DETAILS. CONTACT: (800) 266-7212
- STRAP DOWN UNITS WITH 22 GAUGE STRAPS AT 4 CORNERS WITH TEK SCREWS



2 REFRIGERATION SYSTEM FRAMING SUPPORT DETAIL

NO SCALE



LEGEND

---	18 AWG MIN LOW VOLTAGE WIRING BY MC, LNO.
---	LOW VOLTAGE WIRING BY TORMAX.

3 AIR CURTAIN WIRING DIAGRAM

NO SCALE



Chick-fil-A

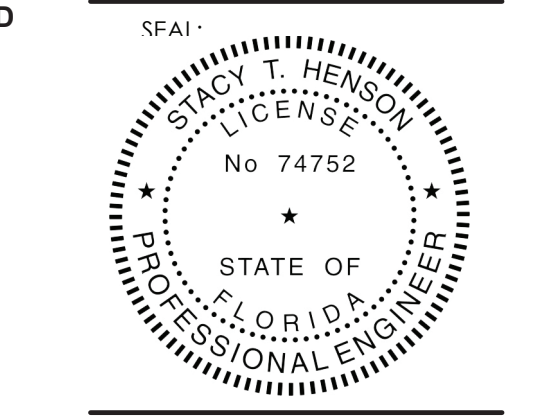
5200 Buffington Road
Atlanta, Georgia
30349-2998

INTERPLAN
INTERPLAN LLC

AF9238
CA 8660

ARCHITECTURE
ENGINEERING
PERMITTING

220 E. CENTRAL PKWY, STE 4000
ALTAMONTE SPRINGS, FL 32701
407.645.5008



This item has been digitally signed and sealed by Stacy Henson on the date adjacent to the seal. Printed copies of this document are not considered signed and sealed and the signature must be verified on any electronic copies.

CHICK-FIL-A
NAVY BLVD
NAVY BLVD
510 N. NAVY BLVD
PENSACOLA, FL 32507

FSU#03072

BUILDING TYPE / SIZE: SOBE

RELEASE: PRINTED FOR Construction

REVISION SCHEDULE

NO.	DATE	DESCRIPTION

CONSULTANT PROJECT # 2022.0684
DATE FEBRUARY 2023
DRAWN BY AE
CHECKED BY DAK

Information contained on this drawing and in all digital files provided for above named project may not be reproduced in any manner without express written or verbal consent from the project representative.

SHEET MECHANICAL DETAILS

SHEET NUMBER

M3.1