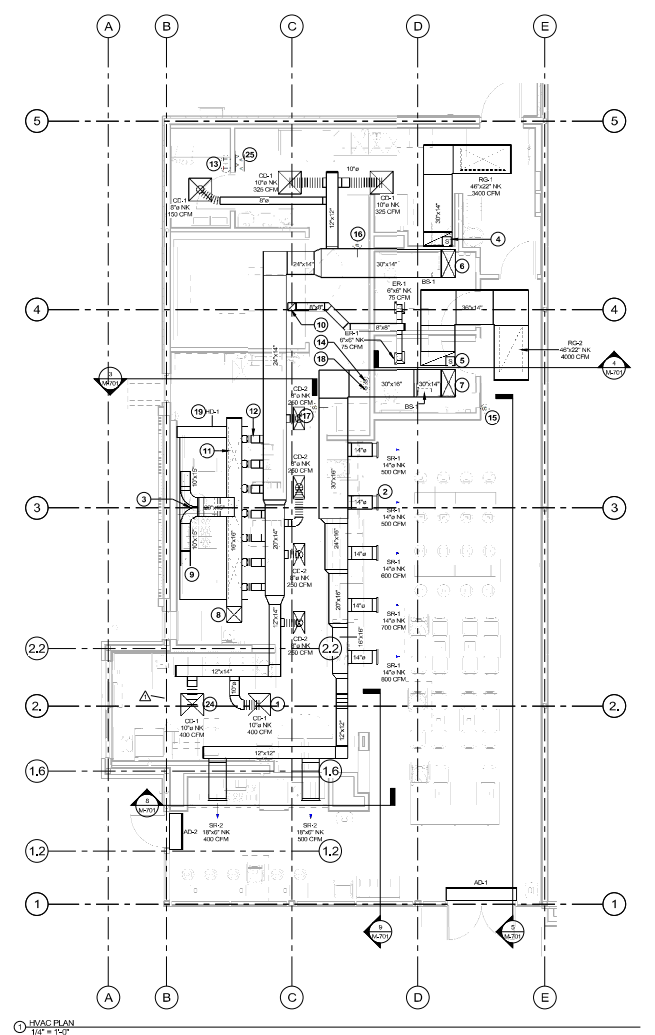
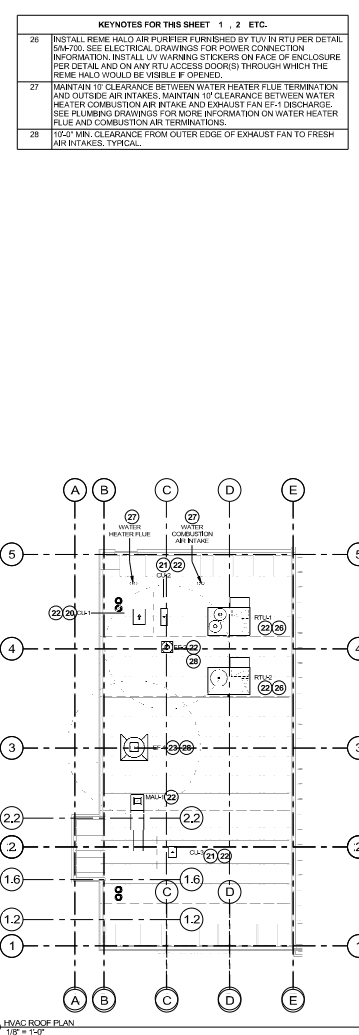


SYMBOL	DESCRIPTION	ABBREVIATION
AC	ACROLYL CHLORIDE (A/C)	AC
AF	ALUMINUM FLUORIDE	AF
AK	ALUMINUM OXIDE	AK
AM	ALUMINUM	AM
AN	ANILINE	AN
AO	ANISOL	AO
AP	ACRYLIC POLYMER	AP
AR	AROMATIC POLYMER	AR
AS	ACRYLIC ACID	AS
AT	ACRYLIC TERNARY	AT
AV	ACRYLIC VARNISH	AV
AW	ACRYLIC WAX	AW
AX	ACRYLIC XYLENE	AX
AY	ACRYLIC YACHT	AY
AZ	ACRYLIC ZINC	AZ
BA	BALTIMORE	BA
BB	BALTIMORE	BB
BC	BALTIMORE	BC
BD	BALTIMORE	BD
BE	BALTIMORE	BE
BF	BALTIMORE	BF
BG	BALTIMORE	BG
BH	BALTIMORE	BH
BI	BALTIMORE	BI
BJ	BALTIMORE	BJ
BK	BALTIMORE	BK
BL	BALTIMORE	BL
BM	BALTIMORE	BM
BN	BALTIMORE	BN
BO	BALTIMORE	BO
BP	BALTIMORE	BP
BQ	BALTIMORE	BQ
BR	BALTIMORE	BR
BS	BALTIMORE	BS
BT	BALTIMORE	BT
BU	BALTIMORE	BU
BV	BALTIMORE	BV
BW	BALTIMORE	BW
BX	BALTIMORE	BX
BY	BALTIMORE	BY
BZ	BALTIMORE	BZ
CA	CALIFORNIA	CA
CB	CALIFORNIA	CB
CC	CALIFORNIA	CC
CD	CALIFORNIA	CD
CE	CALIFORNIA	CE
CF	CALIFORNIA	CF
CG	CALIFORNIA	CG
CH	CALIFORNIA	CH
CI	CALIFORNIA	CI
CJ	CALIFORNIA	CJ
CK	CALIFORNIA	CK
CL	CALIFORNIA	CL
CM	CALIFORNIA	CM
CN	CALIFORNIA	CN
CO	CALIFORNIA	CO
CP	CALIFORNIA	CP
CQ	CALIFORNIA	CQ
CR	CALIFORNIA	CR
CS	CALIFORNIA	CS
CT	CALIFORNIA	CT
CU	CALIFORNIA	CU
CV	CALIFORNIA	CV
CW	CALIFORNIA	CW
CX	CALIFORNIA	CX
CY	CALIFORNIA	CY
CZ	CALIFORNIA	CZ
DA	DALLAS	DA
DB	DALLAS	DB
DC	DALLAS	DC
DD	DALLAS	DD
DE	DALLAS	DE
DF	DALLAS	DF
DG	DALLAS	DG
DH	DALLAS	DH
DI	DALLAS	DI
DJ	DALLAS	DJ
DK	DALLAS	DK
DL	DALLAS	DL
DM	DALLAS	DM
DN	DALLAS	DN
DO	DALLAS	DO
DP	DALLAS	DP
DQ	DALLAS	DQ
DR	DALLAS	DR
DS	DALLAS	DS
DT	DALLAS	DT
DU	DALLAS	DU
DV	DALLAS	DV
DW	DALLAS	DW
DX	DALLAS	DX
DY	DALLAS	DY
DZ	DALLAS	DZ
EA	EAST AFRICA	EA
EB	EAST AFRICA	EB
EC	EAST AFRICA	EC
ED	EAST AFRICA	ED
EE	EAST AFRICA	EE
EF	EAST AFRICA	EF
EG	EAST AFRICA	EG
EH	EAST AFRICA	EH
EI	EAST AFRICA	EI
EJ	EAST AFRICA	EJ
EK	EAST AFRICA	EK
EL	EAST AFRICA	EL
EM	EAST AFRICA	EM
EN	EAST AFRICA	EN
EO	EAST AFRICA	EO
EP	EAST AFRICA	EP
EQ	EAST AFRICA	EQ
ER	EAST AFRICA	ER
ES	EAST AFRICA	ES
ET	EAST AFRICA	ET
EU	EAST AFRICA	EU
EV	EAST AFRICA	EV
EW	EAST AFRICA	EW
EX	EAST AFRICA	EX
EY	EAST AFRICA	EY
EZ	EAST AFRICA	EZ
FA	FALCON	FA
FB	FALCON	FB
FC	FALCON	FC
FD	FALCON	FD
FE	FALCON	FE
FF	FALCON	FF
FG	FALCON	FG
FH	FALCON	FH
FI	FALCON	FI
FJ	FALCON	FJ
FK	FALCON	FK
FL	FALCON	FL
FM	FALCON	FM
FN	FALCON	FN
FO	FALCON	FO
FP	FALCON	FP
FQ	FALCON	FQ
FR	FALCON	FR
FS	FALCON	FS
FT	FALCON	FT
FU	FALCON	FU
FV	FALCON	FV
FW	FALCON	FW
FX	FALCON	FX
FY	FALCON	FY
FZ	FALCON	FZ
GA	GEORGIA	GA
GB	GEORGIA	GB
GC	GEORGIA	GC
GD	GEORGIA	GD
GE	GEORGIA	GE
GF	GEORGIA	GF
GG	GEORGIA	GG
GH	GEORGIA	GH
GI	GEORGIA	GI
GJ	GEORGIA	GJ
GK	GEORGIA	GK
GL	GEORGIA	GL
GM	GEORGIA	GM
GN	GEORGIA	GN
GO	GEORGIA	GO
GP	GEORGIA	GP
GQ	GEORGIA	GQ
GR	GEORGIA	GR
GS	GEORGIA	GS
GT	GEORGIA	GT
GU	GEORGIA	GU
GV	GEORGIA	GV
GW	GEORGIA	GW
GX	GEORGIA	GX
GY	GEORGIA	GY
GZ	GEORGIA	GZ
HA	HAWAII	HA
HB	HAWAII	HB
HC	HAWAII	HC
HD	HAWAII	HD
HE	HAWAII	HE
HF	HAWAII	HF
HG	HAWAII	HG
HH	HAWAII	HH
HI	HAWAII	HI
HJ	HAWAII	HJ
HK	HAWAII	HK
HL	HAWAII	HL
HM	HAWAII	HM
HN	HAWAII	HN
HO	HAWAII	HO
HP	HAWAII	HP
HQ	HAWAII	HQ
HR	HAWAII	HR
HS	HAWAII	HS
HT	HAWAII	HT
HU	HAWAII	HU
HV	HAWAII	HV
HW	HAWAII	HW
HX	HAWAII	HX
HY	HAWAII	HY
HZ	HAWAII	HZ
IA	ILLINOIS	IA
IB	ILLINOIS	IB
IC	ILLINOIS	IC
ID	ILLINOIS	ID
IE	ILLINOIS	IE
IF	ILLINOIS	IF
IG	ILLINOIS	IG
IH	ILLINOIS	IH
II	ILLINOIS	II
IJ	ILLINOIS	IJ
IK	ILLINOIS	IK
IL	ILLINOIS	IL
IM	ILLINOIS	IM
IN	ILLINOIS	IN
IO	ILLINOIS	IO
IP	ILLINOIS	IP
IQ	ILLINOIS	IQ
IR	ILLINOIS	IR
IS	ILLINOIS	IS
IT	ILLINOIS	IT
IU	ILLINOIS	IU
IV	ILLINOIS	IV
IW	ILLINOIS	IW
IX	ILLINOIS	IX
IY	ILLINOIS	IY
IZ	ILLINOIS	IZ
JA	JAPAN	JA
JB	JAPAN	JB
JC	JAPAN	JC
JD	JAPAN	JD
JE	JAPAN	JE
JF	JAPAN	JF
JG	JAPAN	JG
JH	JAPAN	JH
JI	JAPAN	JI
JJ	JAPAN	JJ
JK	JAPAN	JK
JL	JAPAN	JL
JM	JAPAN	JM
JN	JAPAN	JN
JO	JAPAN	JO
JP	JAPAN	JP
JQ	JAPAN	JQ
JR	JAPAN	JR
JS	JAPAN	JS
JT	JAPAN	JT
JU	JAPAN	JU
JV	JAPAN	JV
JW	JAPAN	JW
JX	JAPAN	JX
JY	JAPAN	JY
JZ	JAPAN	JZ
KA	KANSAS	KA
KB	KANSAS	KB
KC	KANSAS	KC
KD	KANSAS	KD
KE	KANSAS	KE
KF	KANSAS	KF
KG	KANSAS	KG
KH	KANSAS	KH
KI	KANSAS	KI
KJ	KANSAS	KJ
KK	KANSAS	KK
KL	KANSAS	KL
KM	KANSAS	KM
KN	KANSAS	KN
KO	KANSAS	KO
KP	KANSAS	KP
KQ	KANSAS	KQ
KR	KANSAS	KR
KS	KANSAS	KS
KT	KANSAS	KT
KU	KANSAS	KU
KV	KANSAS	KV
KW	KANSAS	KW
KX	KANSAS	KX
KY	KANSAS	KY
KZ	KANSAS	KZ
LA	LOUISIANA	LA
LB	LOUISIANA	LB
LC	LOUISIANA	LC
LD	LOUISIANA	LD
LE	LOUISIANA	LE
LF	LOUISIANA	LF
LG	LOUISIANA	LG
LH	LOUISIANA	LH
LI	LOUISIANA	LI
LJ	LOUISIANA	LJ
LK	LOUISIANA	LK
LL	LOUISIANA	LL
LM	LOUISIANA	LM
LN	LOUISIANA	LN
LO	LOUISIANA	LO
LP	LOUISIANA	LP
LQ	LOUISIANA	LQ
LR	LOUISIANA	LR
LS	LOUISIANA	LS
LT	LOUISIANA	LT
LU	LOUISIANA	LU
LV	LOUISIANA	LV
LW	LOUISIANA	LW
LX	LOUISIANA	LX
LY	LOUISIANA	LY
LZ	LOUISIANA	LZ
MA	MAINE	MA
MB	MAINE	MB
MC	MAINE	MC
MD	MAINE	MD
ME	MAINE	ME
MF	MAINE	MF
MG	MAINE	MG
MH	MAINE	MH
MI	MAINE	MI
MJ	MAINE	MJ
MK	MAINE	MK
ML	MAINE	ML
MM	MAINE	MM
MN	MAINE	MN
MO	MAINE	MO
MP	MAINE	MP
MQ	MAINE	MQ
MR	MAINE	MR
MS	MAINE	MS
MT	MAINE	MT
MU	MAINE	MU
MV	MAINE	MV
MW	MAINE	MW
MX	MAINE	MX
MY	MAINE	MY
MZ	MAINE	MZ
NA	NORTH CAROLINA	NA
NB	NORTH CAROLINA	NB
NC	NORTH CAROLINA	NC
ND	NORTH CAROLINA	ND
NE	NORTH CAROLINA	NE
NF	NORTH CAROLINA	NF
NG	NORTH CAROLINA	NG
NH	NORTH CAROLINA	NH
NI	NORTH CAROLINA	NI
NJ	NORTH CAROLINA	NJ
NK	NORTH CAROLINA	NK
NL	NORTH CAROLINA	NL
NM	NORTH CAROLINA	NM
NN	NORTH CAROLINA	NN
NO	NORTH CAROLINA	NO
NP	NORTH CAROLINA	NP
NQ	NORTH CAROLINA	NQ
NR	NORTH CAROLINA	NR
NS	NORTH CAROLINA	NS
NT	NORTH CAROLINA	NT
NU	NORTH CAROLINA	NU
NV	NORTH CAROLINA	NV
NW	NORTH CAROLINA	NW
NX	NORTH CAROLINA	NX
NY	NORTH CAROLINA	NY
NZ	NORTH CAROLINA	NZ
OA	OHIO	OA
OB	OHIO	OB
OC	OHIO	OC
OD	OHIO	OD
OE	OHIO	OE
OF	OHIO	OF
OG	OHIO	OG
OH	OHIO	OH
OI	OHIO	OI
OJ	OHIO	OJ
OK	OHIO	OK
OL	OHIO	OL
OM	OHIO	OM
ON	OHIO	ON
OO	OHIO	OO
OP	OHIO	OP
OQ	OHIO	OQ
OR	OHIO	OR
OS	OHIO	OS
OT	OHIO	OT
OU	OHIO	OU
OV	OHIO	OV
OW	OHIO	OW
OX	OHIO	OX
OY	OHIO	OY
OZ	OHIO	OZ
PA	PENNSYLVANIA	PA
PB	PENNSYLVANIA	PB
PC	PENNSYLVANIA	PC
PD	PENNSYLVANIA	PD
PE	PENNSYLVANIA	PE
PF	PENNSYLVANIA	PF
PG	PENNSYLVANIA	PG
PH	PENNSYLVANIA	PH
PI	PENNSYLVANIA	PI
PJ	PENNSYLVANIA	PJ
PK	PENNSYLVANIA	PK
PL	PENNSYLVANIA	PL
PM	PENNSYLVANIA	PM
PN	PENNSYLVANIA	PN
PO	PENNSYLVANIA	PO
PP	PENNSYLVANIA	PP
PQ	PENNSYLVANIA	PQ
PR	PENNSYLVANIA	PR
PS	PENNSYLVANIA	PS
PT	PENNSYLVANIA	PT
PU	PENNSYLVANIA	PU
PV	PENNSYLVANIA	PV
PW	PENNSYLVANIA	PW
PX	PENNSYLVANIA	PX
PY	PENNSYLVANIA	PY
PZ	PENNSYLVANIA	PZ
QA	QUEBEC	QA
QB	QUEBEC	QB
QC	QUEBEC	QC
QD	QUEBEC	QD
QE	QUEBEC	QE
QF	QUEBEC	

- KEYNOTES FOR THIS SHEET 1, 2, ETC.**
- SEE ARCHITECTURAL REFLECTED CEILING PLAN FOR CEILING MOUNTED EQUIPMENT LOCATION, TYPICAL.
  - PAINT DUCTWORK VISIBLE THROUGH DINING ROOM SUPPLY REGISTERS BLACK, TYPICAL.
  - PROVIDE TEE FITTING WITH RADIUS BACK AND RADIUS THROAT WHERE INDIVIDUAL EXHAUST FIBERS CONVERGE AS SHOWN. THE CENTERLINE OF THE RADI SHALL BE EQUAL TO THE DUCT DIMENSION.
  - 30" DIA DUCT UP FOR TRANSITION TO RTU-1 RETURN CONNECTION IN ROOF CURB. RTU-1 SHALL HAVE AN INTEGRAL SMOKE DETECTOR MOUNTED IN THE RETURN AIR STREAM. INTERLOCK SMOKE DETECTOR TO RTU-1 OPERATION.
  - 36" DIA DUCT UP FOR TRANSITION TO RTU-2 RETURN CONNECTION IN ROOF CURB. RTU-2 SHALL HAVE AN INTEGRAL SMOKE DETECTOR MOUNTED IN THE RETURN AIR STREAM. INTERLOCK SMOKE DETECTOR TO RTU-2 OPERATION.
  - 30" DIA DUCT UP FROM BUILDING SUPPLY THROUGH ROOF, TRANSITION TO RTU-1 SUPPLY CONNECTION IN ROOF CURB.
  - 30" DIA DUCT UP FROM BUILDING SUPPLY THROUGH ROOF, TRANSITION TO RTU-2 SUPPLY CONNECTION IN ROOF CURB.
  - 16" DIA DUCT UP THROUGH ROOF, TRANSITION TO MALL-1 SUPPLY CONNECTION IN ROOF CURB.
  - 10" DIA DUCT UP FROM ROOF TO 20" DIA DUCT THROUGH ROOF TO EF-1 COMPLIANT WITH NFPA 98, PROVIDE RADIUS ELBOWS WITH AN INSIDE RADIUS OF 0.5W AT ELBOWS IN GREASE DUCT. PROVIDE DUCT CLEANOUT ACCESS DOOR AT ALL CHANGES IN DIRECTION AND AT LINEAR INTERVALS PER LOCAL CODE.
  - 8" DIA DUCT UP THROUGH ROOF TO EF-2. SEE DETAIL E & 10M-701.
  - 28" DIA DUCT DOWN TO MAKEUP AIR PSP DUCT CONNECTION. TRANSITION TO SUPPLY PLENUM OPENING SIZE, TYPICAL FOR 3.
  - 8" DIA DUCT DOWN TO AC FSP DUCT CONNECTION. TRANSITION TO SUPPLY PLENUM OPENING SIZE, TYPICAL. CAP UNUSED DUCT CONNECTIONS.
  - INSTALL SINGLE-GANG VERTICAL 4-BOX FOR GRIDPOINT THERMOSTATS FURNISHED BY TMS FOR RTU-1 AND RTU-2 AT THIS LOCATION AT 48" AFF. COORDINATE WITH ELECTRICAL SWITCHING IN THIS AREA. PROVIDE WIRING AS SHOWN IN DETAIL 9E710. LABEL THERMOSTAT WITH CORRESPONDING UNIT.
  - INSTALL GRIDPOINT ZONE SENSOR MODULE FURNISHED BY TMS FOR RTU-1 AT THIS LOCATION AT 72" AFF DIRECTLY TO WALL (NO JUNCTION BOX). COORDINATE LOCATION WITH EQUIPMENT. PROVIDE WIRING AS SHOWN IN DETAIL 9E710. LABEL SENSOR WITH CORRESPONDING UNIT.
  - INSTALL GRIDPOINT ZONE SENSOR MODULE FURNISHED BY TMS FOR RTU-2 AT THIS LOCATION AT 68" AFF DIRECTLY TO WALL (NO JUNCTION BOX). COORDINATE LOCATION WITH EQUIPMENT. PROVIDE WIRING AS SHOWN IN DETAIL 9E710. LABEL SENSOR WITH CORRESPONDING UNIT.
  - INSTALL GRIDPOINT SUPPLY PROBE FURNISHED BY TMS FOR RTU-1 IN THE SUPPLY DUCTWORK UPSTREAM FROM THE FIRST BRANCH CONNECTION. PROVIDE WIRING AS SHOWN IN DETAIL 9E710.
  - INSTALL GRIDPOINT SUPPLY PROBE FURNISHED BY TMS FOR RTU-2 IN THE SUPPLY DUCTWORK UPSTREAM FROM THE FIRST BRANCH CONNECTION. PROVIDE WIRING AS SHOWN IN DETAIL 9E710.
  - INSTALL REMOTE TEMPERATURE SENSOR FOR HOOD HEAT AT THIS LOCATION AT 72" AFF. COORDINATE LOCATION WITH EQUIPMENT. PROVIDE (2) #16 G. THERMISTOR CABLE FROM TEMPERATURE SENSOR TO HOOD CONTROL PANEL. LABEL SENSOR "H01".
  - INSTALL KITCHEN HOOD, HD-3, SUPPORT HOOD PER MANUFACTURER'S INSTALLATION INSTRUCTIONS AND AS DETAILED IN THE ARCHITECTURAL AND STRUCTURAL DRAWINGS. INSTALL HOOD ACCORDING TO THE REQUIREMENTS OF ITS LISTING, IN COMPLIANCE WITH NFPA 96, THE BUILDING CODE, AND ALL APPLICABLE JURISDICTIONS. HOOD SHALL HAVE AN INTEGRAL DUCT COLLAR TEMPERATURE SENSOR TO AUTOMATICALLY ENERGIZE THE EXHAUST AND MAKEUP AIR FANS IF COOKING TEMPERATURES ARE DETECTED. EXHAUST DUCT SYSTEM TO BE WELDED OR FACTORY-MANUFACTURED WATER AND AIR TIGHT. INSTALL CLEANOUTS PER CODE AND AS SHOWN. INSTALL HOOD PER DETAILS 4M-700, 2M-701, AND 3M-701. CHIPOTLE WILL PROVIDE AN INDEPENDENT TESTING AGENCY FOR TESTING THE INTEGRITY OF THE GREASE DUCT SYSTEM.
  - INSTALL REMOTE CONDENSING UNIT FOR WALK-IN COOLER ON ROOF AS DETAILED IN THE ARCHITECTURAL AND STRUCTURAL DRAWINGS. INSTALL REFRIGERANT LINE SET, THERMOSTATIC EXPANSION VALVE, SOLENOID VALVE, TEMPERATURE CONTROL, SIGHT GLASS, FILTER DRIER, PRESSURE CONTROL, LOW AMBIENT CONTROL, AND WEATHERPROOF HOUSING. TRAP AND SLOPE REFRIGERANT LINES PER MANUFACTURER'S RECOMMENDATIONS. SEAL PIPING PENETRATIONS THROUGH ROOF. INSTALLATION SHALL COMPLY WITH ASHRAE STANDARD 15. INSTALL THE REFRIGERANT LINE SET UNDER THE ROOF DECK TO WITHIN 3'-0" OF THE CONDENSING UNIT. CUT 3/4" HOLE IN WALK-IN COOLER ROOF FOR REFRIGERANT LINE SET AND SEAL PER THE COOLER MANUFACTURER'S INSTALLATION INSTRUCTIONS AFTER LINE SET IS INSTALLED.
  - INSTALL REMOTE CONDENSER FOR ICE MACHINE ON ROOF. INSTALL REFRIGERANT LINE SET, THERMOSTATIC EXPANSION VALVE, SOLENOID VALVE, TEMPERATURE CONTROL, SIGHT GLASS, FILTER DRIER, PRESSURE CONTROL, LOW AMBIENT CONTROL, AND WEATHERPROOF HOUSING. TRAP AND SLOPE REFRIGERANT LINES PER MANUFACTURER'S RECOMMENDATIONS. SEAL PIPING PENETRATIONS THROUGH ROOF. INSTALLATION SHALL COMPLY WITH ASHRAE STANDARD 15. INSTALL THE REFRIGERANT LINE SET UNDER THE ROOF DECK TO WITHIN 3'-0" OF THE REMOTE CONDENSER. IF REFRIGERANT PIPING TO ICE MACHINE IS EXPOSED TO PUBLIC VIEW, CONCEAL WITH A STAINLESS STEEL SHROUD AS SHOWN IN THE ARCHITECTURAL DRAWINGS.
  - INSTALL ROOFTOP EQUIPMENT PER MANUFACTURER'S INSTALLATION INSTRUCTIONS AND AS DETAILED IN THE ARCHITECTURAL AND STRUCTURAL DRAWINGS.
  - INSTALL EXHAUST FAN EF-1 PER DETAIL 6M-700 AND AS DETAILED IN THE ARCHITECTURAL AND STRUCTURAL DRAWINGS. INSTALL GREASE PROTECTOR SYSTEM FURNISHED BY CHIPOTLE ON EXHAUST FAN EF-1.
  - PROVIDE SUPPLY DEFIBER CONNECTION TO SUPPLY SYSTEM PER DETAIL 6M-700, TYPICAL.
  - PROVIDE AUDIOVISUAL REMOTE SMOKE DETECTOR ANNUNCIATOR WITH REMOTE KEY OPERATED RESET WIRE A UNIT TO EACH SMOKE DETECTOR. MOUNT UNIT 68" AFF. LABEL ANNUNCIATOR WITH CORRESPONDING UNIT, TYPICAL.



2022-DBF1/PW1-4

214 W. Main Street, Suite 208  
 Moorestown, NJ 08057  
 (856) 778-5400

STORE NO.: 4128  
 1735 ALLENTOWN ROAD  
 LANSDALE, PA 15146

REV. DATE DESCRIPTION  
 2022.04.15 LANDLORD SET  
 2022.05.09 PERMIT SET  
 2024.04.29 RFD SET  
 2024.06.24 CONSTRUCTION SET

PROJECT NO.: 4128  
 PROJECT NAME:  
 21034  
 SHEET NO.:  
 HVAC PLAN  
 10/17/2023

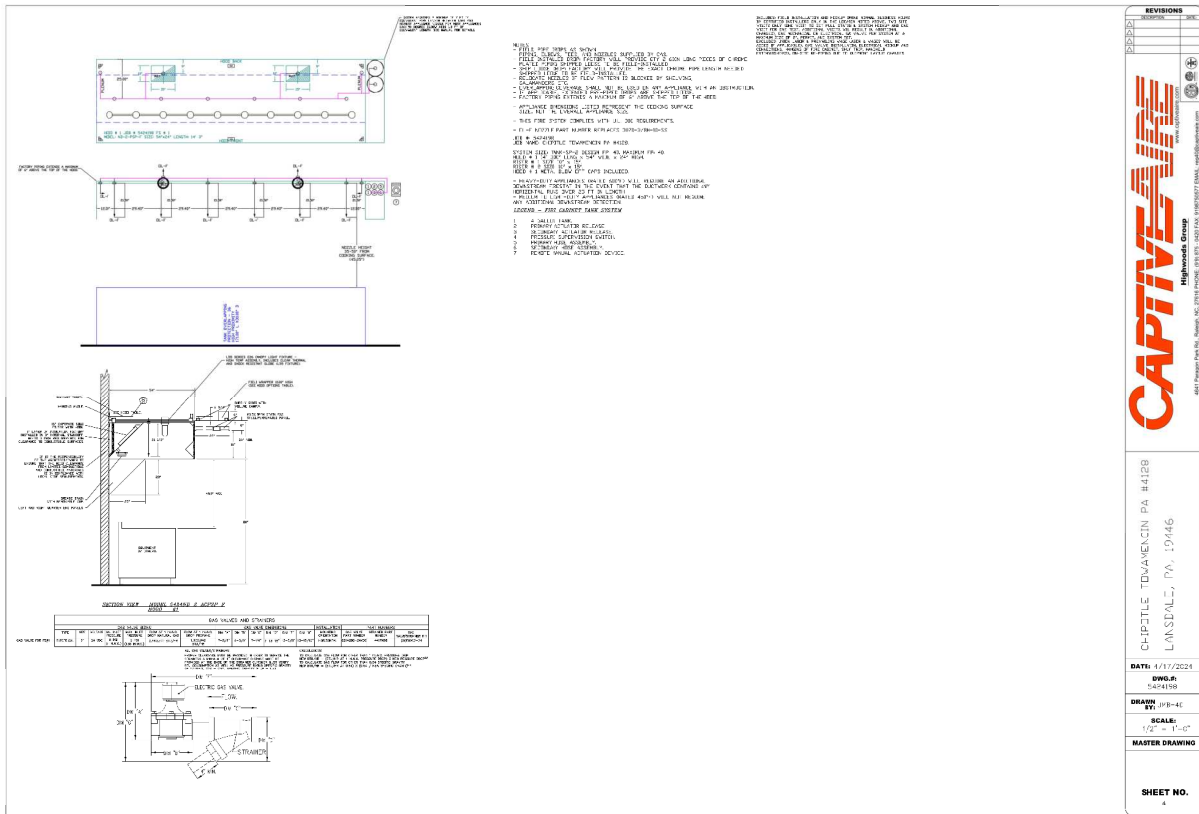
M-100







HOOD SHOP DRAWING PRODUCED BY  
MANUFACTURER - FOR REFERENCE ONLY



**Polaris**  
214 W. Main Street, Suite 208  
Moorestown, NJ 08057  
(856) 718-5400



STORE NO.: 4128  
1758 ALLENTOWN ROAD  
LANSDALE, PA 19446

REV. DATE	DESCRIPTION
2022.04.15	LANDLORD SET
2022.03.09	PERMIT SET
2024.04.19	REV SET
2024.04.19	CONSTRUCTION SET

PROFESSIONAL SEAL

ARCHITECT: J. B. BULL, P.E.  
REGISTERED PROFESSIONAL ENGINEER

PROJECT: 1758 ALLENTOWN ROAD, LANSDALE, PA 19446

PROJECT NO.: 21034

DRAWING NO.: CAPTIVEAIRE DRAWINGS

SHEET NO. 4

M-403

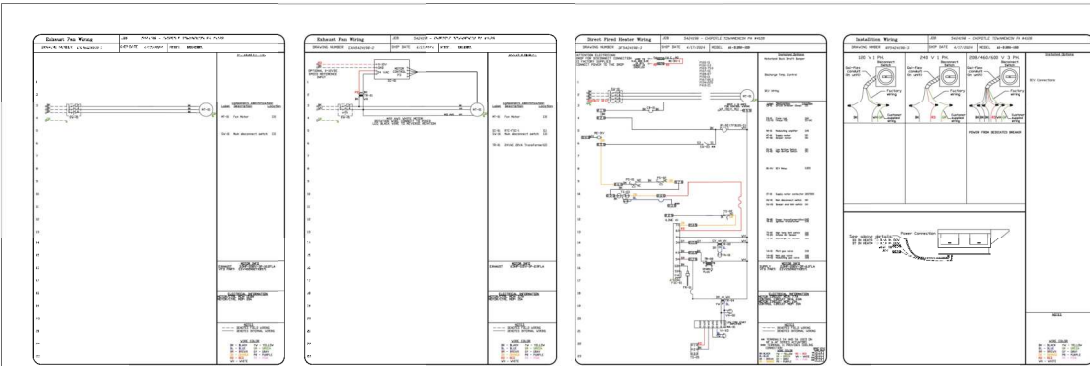
2022\_DBFL/PW1-4







HOOD SHOP DRAWING PRODUCED BY  
MANUFACTURER - FOR REFERENCE ONLY



↑

REVISIONS	
NO.	DESCRIPTION

**CAPTIVEAIRE**  
High-Speed Ductwork

4841 Ferguson Drive, Raleigh, NC 27612 | 919.287.7272 | 919.287.7277 | FAX: 919.287.7278 | <http://www.captiveaire.com>

CHIPOTLE - TIMAVENIN, PA #4128  
LANSDALE, PA, 19446

DATE: 7/2/2024  
DWG: 1944-10  
DRAWN BY: JES-AC  
SCALE: 1/8" = 1'-0"  
MASTER DRAWING

SHEET NO. 4

**Polaris**  
214 W. Main Street, Suite 208  
Moorestown, NJ 08057  
(856) 718-5400

THIS DRAWING IS AN INSTRUMENT OF SERVICE AND AS SUCH IS THE PROPERTY OF CAPTIVEAIRE. IT IS TO BE USED ONLY FOR THE PROJECT AND SITE SPECIFICALLY IDENTIFIED HEREIN. CAPTIVEAIRE SHALL NOT BE RESPONSIBLE FOR ANY REUSE OF THIS DRAWING FOR ANY OTHER PROJECT OR SITE WITHOUT THE WRITTEN CONSENT OF CAPTIVEAIRE.

**CHIPOTLE MEXICAN BELL**

CHIPOTLE MEXICAN BELL, INC.  
1735 ALLENTOWN ROAD  
LANSDALE, PA 19446  
PH: 610.261.1100  
FAX: 610.261.1101

STORE NO.: 4128  
1735 ALLENTOWN ROAD  
LANSDALE, PA 19446

REV. DATE	DESCRIPTION
2023.04.15	LANDLORD SET
2023.05.09	PERMIT SET
2024.04.29	REV SET
2024.05.24	CONSTRUCTION SET

PROFESSIONAL SEAL

ARCHITECT: J. B. BARNETT, P.E.  
REGISTERED PROFESSIONAL ENGINEER

PROJECT: 1735 ALLENTOWN ROAD, LANSDALE, PA  
DRAWN BY: JES-AC  
CHECKED BY: JES-AC

PROJECT NUMBER: 21034

DRAWING TITLE: CAPTIVEAIRE DRAWINGS

SHEET NUMBER: M-407

2023\_DBFL/PWF-4

HOOD SHOP DRAWING PRODUCED BY  
MANUFACTURER - FOR REFERENCE ONLY

ELECTRICAL PACKAGE - JOB#64198			SWITCHES		OPTION		FANS CONTROLLED	
NO.	QUANTITY	LOCATION	DESCRIPTION	QUANTITY	TYPE	FAN TAG	TYPE	FAN TAG
1	1	SC-303000A	RELAY CABINET MOUNT	1	1	1	1	1

**5424198** SC-303000A

**5424198** SC-303000A

**5424198** SC-303000A

TANK PROTECTION ELECTRICAL DETAIL

FS-1: MASTER

**5424198** SC-303000A

TANK PROTECTION -10V-VOLTAGE DETAIL

FS-1: MASTER

**REVISIONS**

NO.	DATE	DESCRIPTION
1	1/11/2024	ISSUE FOR CONSTRUCTION

**CAPTIVE WIRE**  
Highlands Group

DATE: 1/11/2024  
DWG.#: 5424198  
DRAWN BY: JH-EE  
SCALE: 3/4" = 1'-0"  
MASTER DRAWING

**SHEET NO.**  
2

**Polaris**  
214 W. Main Street, Suite 208  
Moorestown, NJ 08057  
(856) 718-5400



STORE NO.: 4128  
1758 ALLENTOWN ROAD  
LANSDALE, PA 19446

REV. DATE	DESCRIPTION
2023.04.15	LANSDALE SET
2023.05.09	PERMIT SET
2024.04.29	RFQ SET
2024.04.24	CONSTRUCTION SET

ARCHITECT: J. B. BULL, P.E.  
MECHANICAL: J. B. BULL, P.E.  
PROJECT: NEW RESTAURANT, CHIPOTLE MEXICAN GRILL  
DRAWN BY: JH-EE  
CHECKED BY: JH-EE  
DATE: 1/11/2024  
SCALE: 3/4" = 1'-0"  
MASTER DRAWING

**M-408**

2022-DBFL/PW1-4







