



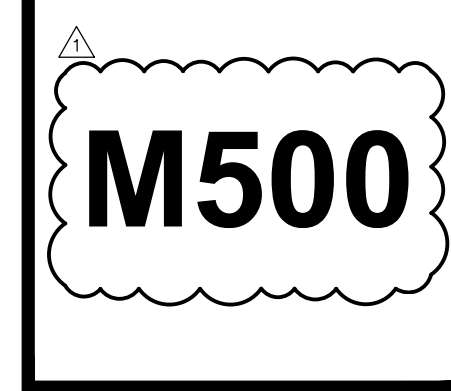
1917 5TH ST.
EUREKA, CA 95501
A.P.N 002-105-018

HOOD DRAWINGS

Project Number: _____
Plan Check Number: _____

01/01/2024	6815900	VERSION 2023.04
09/24/2024	_____	OWNER REVISION

DRAWN BY: AH-83
SCALE: 3/4" = 1'-0"
MASTER DRAWING



REVISIONS

NO.	DESCRIPTION	DATE

CAPTIVE
Southern CA National Accounts
www.captiveusa.com
3022 Dow Ave., Suite 202, Torrance, CA 90780 Phone: (714) 977-2900 Email: rugg@captivemex.com

Habit - Eureka, CA
EUREKA, CA, 95501

DATE: 6/3/2024
DWG.#: 6815900
DRAWN BY: AH-83
SCALE: 3/4" = 1'-0"
MASTER DRAWING

SHEET NO. 1

FOR QUESTIONS, CALL THE
Southern CA National Accounts
REGION 03
PHONE: (714) 677-2963
EMAIL: rugg@captivemex.com

PATENT NUMBERS
AC-PSP (UNITED STATES) - US PATENT 7961030 B2
AC-PSP WALL (CANADA) - CA PATENT 2880505
AC-PSP ISLAND (CANADA) - CA PATENT 2920336

HOOD INFORMATION - JOB#6815900

HOOD NO.	TAG	MODEL	MANUFACTURER	LENGTH	MIN. COOKING TEMP.	TYPE	APPL. RANGE DUTY	DESIGN CFM/FT	TOTAL EXH. CFM	EXHAUST PLENUM (SERIES)	TOTAL SUPPLY CFM	HOOD CONSTRUCTION	HOOD END TO END	HOOD ROW
1	5430	NS-2-PSP-F	CAPTIVEAIRE	13' 3"	600 DEG	I	HEAVY	272	3600	14" 1800 1684 -1107	2900	430 SS WHERE EXPOSED	ALONE	ALONE
2	5430	NS-2W1	CAPTIVEAIRE	5' 0"	600 DEG	I	HEAVY	250	1750	14" 1800 1684 -1107	0	430 SS WHERE EXPOSED	ALONE	ALONE
3	156	MISC-PSP	CAPTIVEAIRE	5' 1"	300 DEG	N/A	N/A	0	0	0	700	430 SS WHERE EXPOSED	ALONE	ALONE
4	156	MISC-PSP	CAPTIVEAIRE	3' 6"	300 DEG	N/A	N/A	0	0	0	700	430 SS WHERE EXPOSED	ALONE	ALONE

HOOD INFORMATION

HOOD NO.	TAG	TYPE	FILTERS		LIGHTS		UTILITY CABINETS		FIRE SYSTEM PIPING	HOOD HANGING WEIGHT								
			TYPE	EFFICIENCY @ 7 MICRONS	QTY	TYPE	TYPE	SIZE			MODEL #	QUANTITY						
1		CAPTIVEAIRE COMBO WITH	10	20"	16"	99% SEE FILTER SPEC	4	L55 SERIES E26	NO	LEFT	12"x24"x24"	TANK FS	4.0/4.0	DCV-3011	1 LIGHT 1 FAN	YES	1339 LBS	
2		CAPTIVEAIRE COMBO WITH	3	20"	16"	99% SEE FILTER SPEC	2	L55 SERIES E26	NO								YES	358 LBS
3																	NO	55 LBS
4																	NO	59 LBS

HOOD OPTIONS

HOOD NO.	TAG	OPTION
1		FIELD WRAPPER 400" HIGH FRONT, LEFT, RIGHT. RIGHT END STANDOFF (FINISHED) 1" WIDE 54" LONG INSULATED. LEFT QUARTER END PANEL 23" TOP WIDTH, 0" BOTTOM WIDTH, 23" HIGH 430 SS. INSULATION FOR TOP OF HOOD. STRUCTURAL FRONT PANEL. INSULATION FOR BACK OF HOOD. 1-PINT GREASE CUP.
2		FIELD WRAPPER 400" HIGH FRONT, LEFT, RIGHT. LEFT END STANDOFF (FINISHED) 1" WIDE 54" LONG INSULATED. INSULATION FOR TOP OF HOOD. FINISHED BACK ISL/REV INSTALL 6200" LONG, FILTERS TO THE BACK. 1-PINT GREASE CUP.
3		FIELD WRAPPER 400" HIGH LEFT, RIGHT, BACK.
4		FIELD WRAPPER 400" HIGH FRONT, LEFT, RIGHT.

PERFORATED SUPPLY PLENUMS

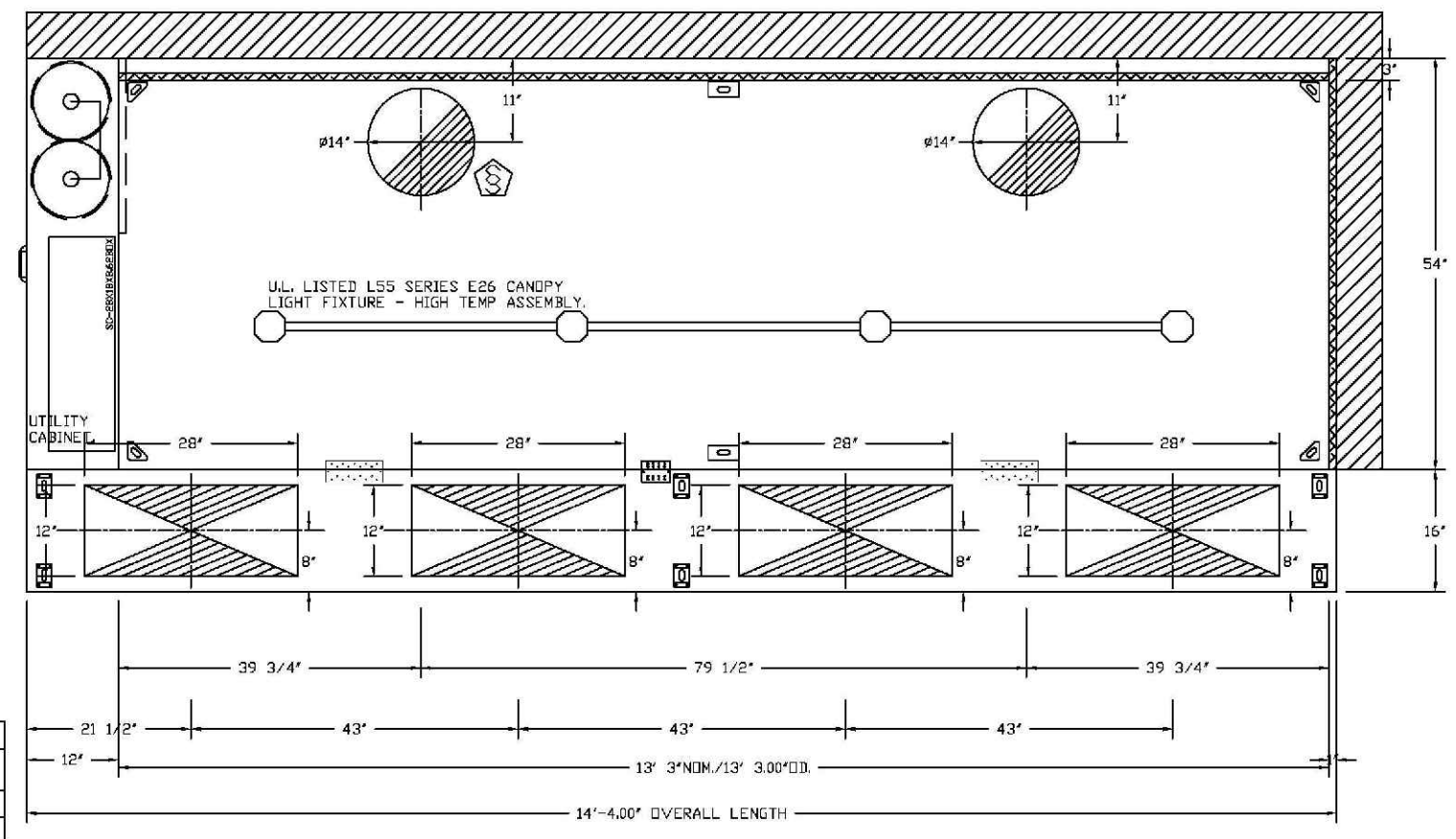
HOOD NO.	TAG	POS	LENGTH	WIDTH	HEIGHT	TYPE	WIDTH	LENGTH	DIA	CFM	SP
1		Front	172"	16"	6"	MUA	12"	28"	725	0.198"	
						MUA	12"	28"	725	0.198"	
						MUA	12"	28"	725	0.198"	
3		Front	61"	16"	6"	MUA	12"	28"	700	0.191"	
4		Front	42"	16"	6"	MUA	12"	28"	700	0.185"	

WALL-MOUNT UTILITY CABINET

HOOD NO.	LOCATION	SIZE	FIRE SYSTEM		ELECTRICAL	SWITCHES	WEIGHT
			TYPE	SIZE			
1	WALL MNT	12"x24"x24"	TANK FS	4.0/4.0			300.00 LBS

FIRE SYSTEM INFORMATION - JOB#6815900

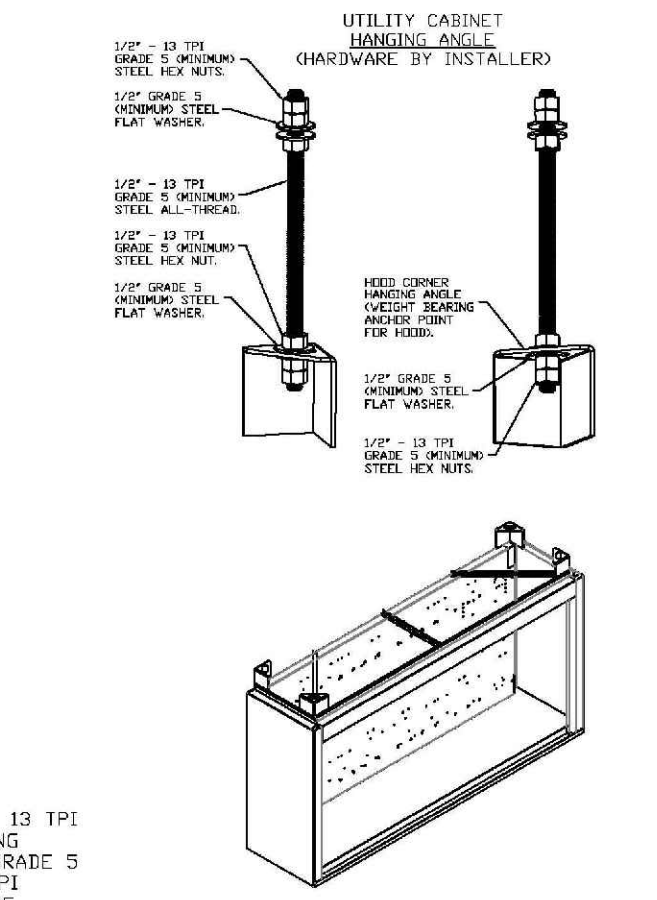
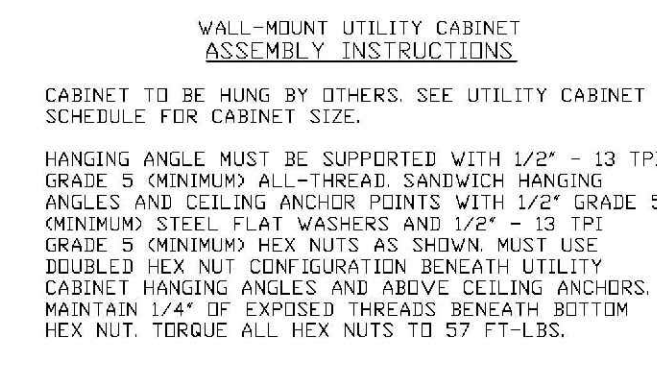
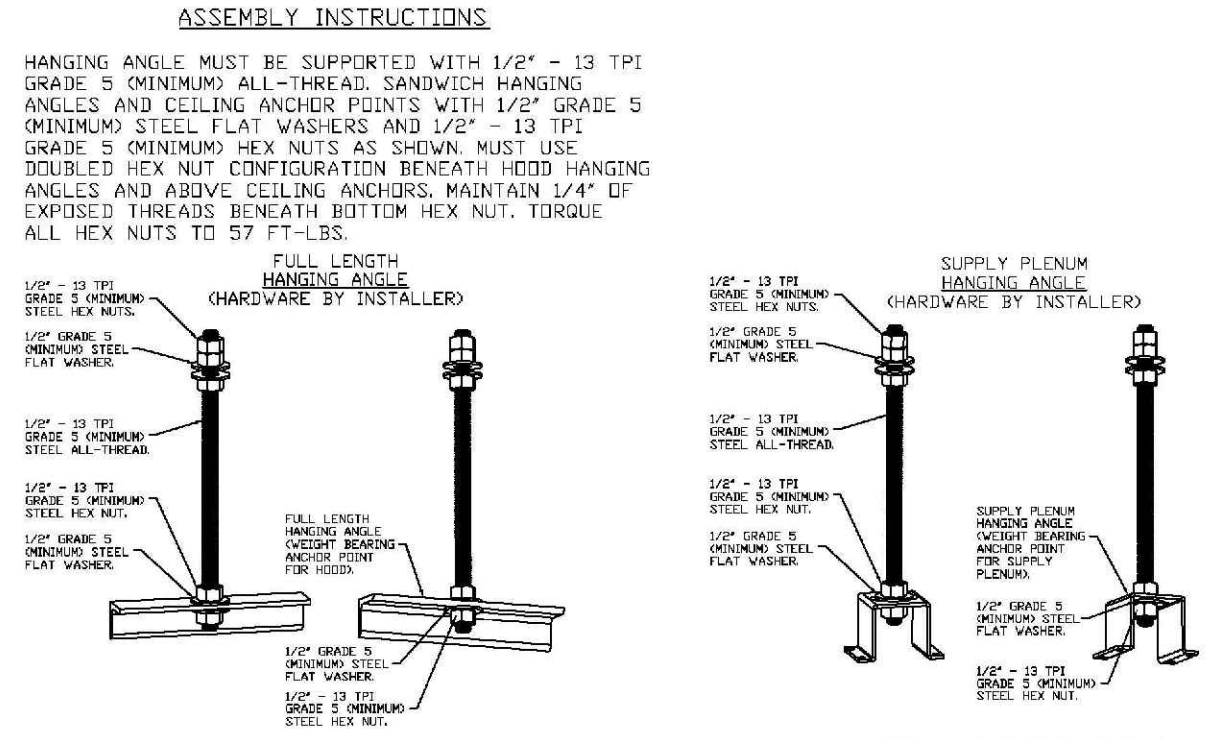
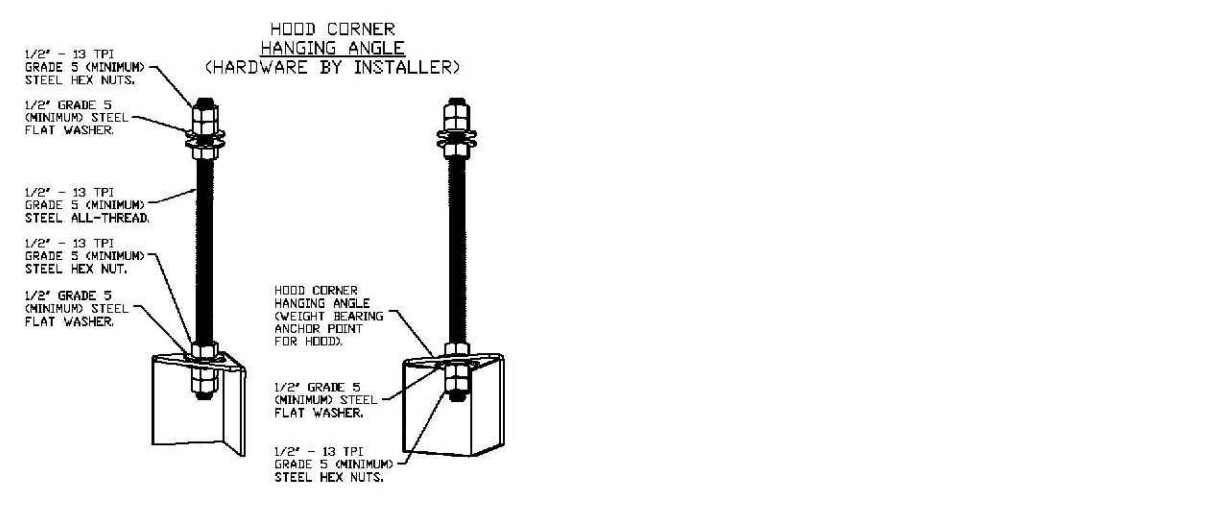
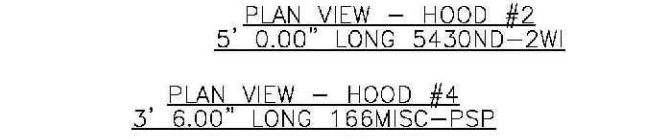
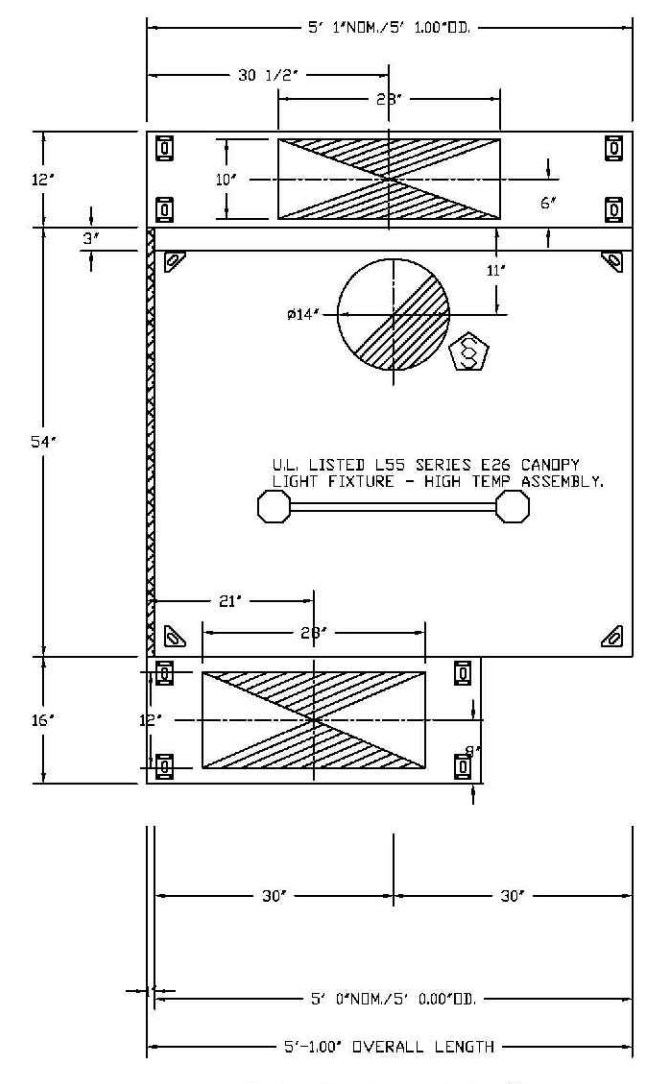
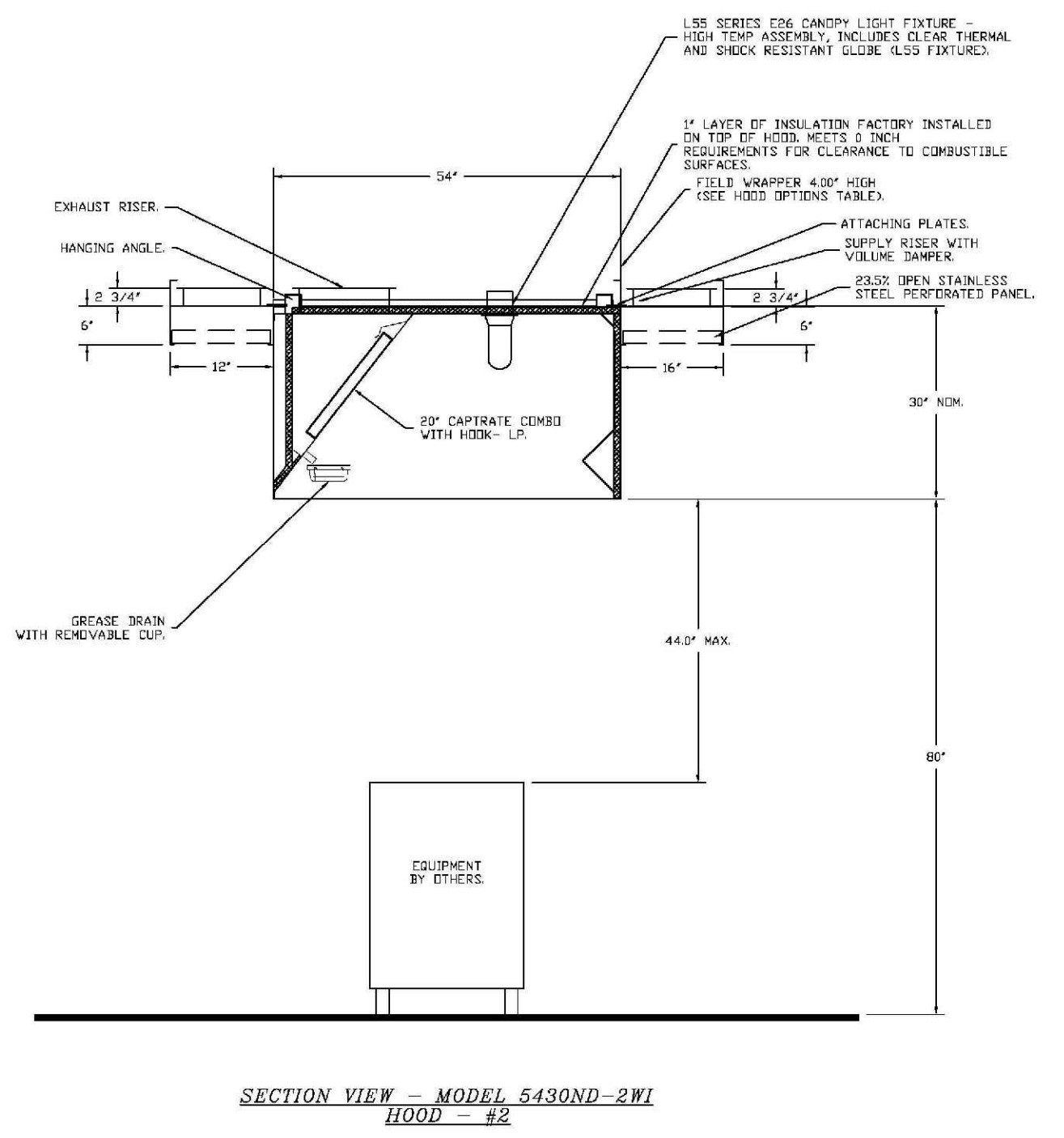
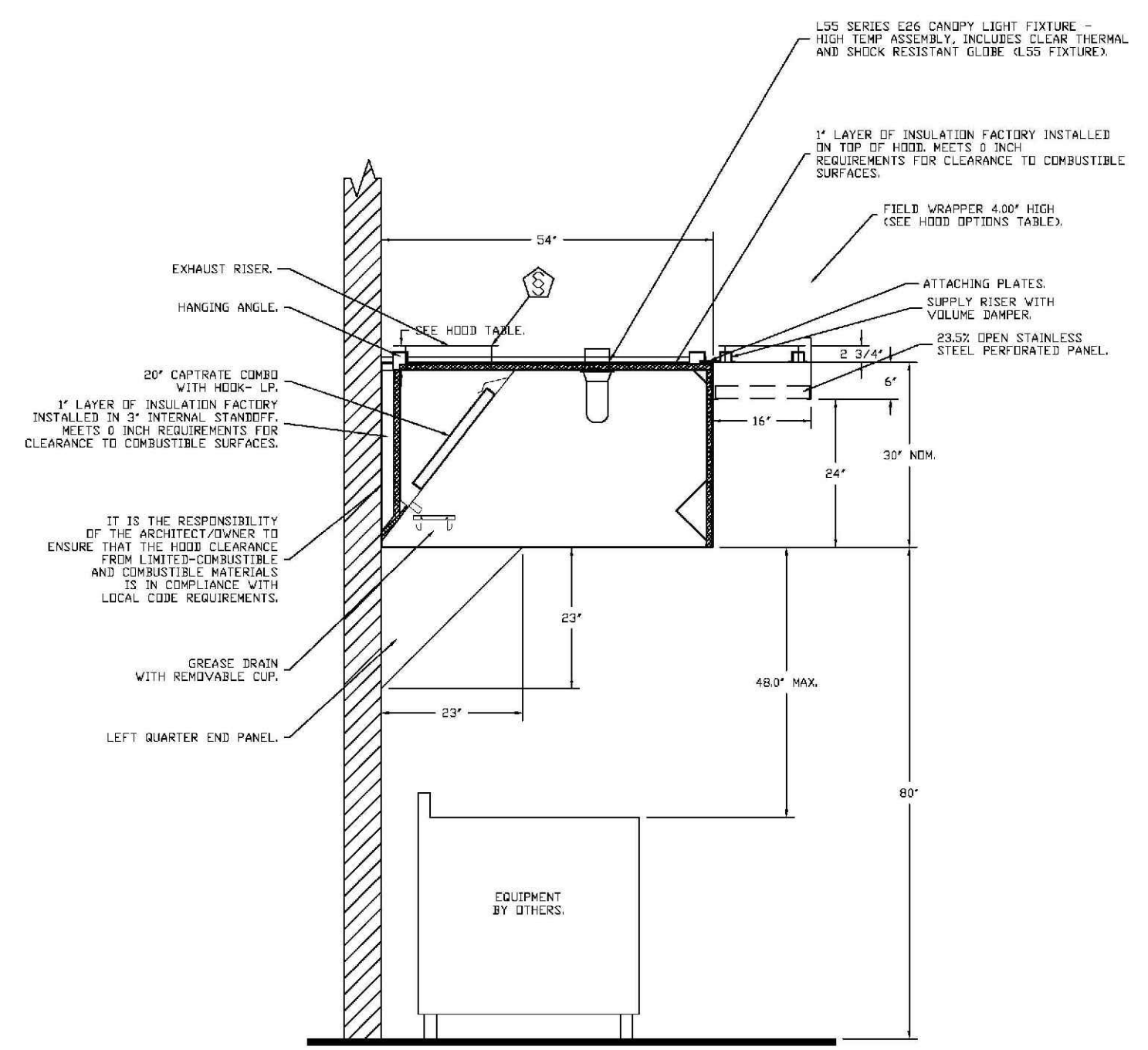
FIRE SYSTEM NO.	TAG	TYPE	SIZE	MAX FP	DESIGN FP	INSTALLATION	
						SYSTEM	LOCATION ON HOOD
1		TANK FS	4.0/4.0	48	66	FIRE CABINET LEFT	LEFT, HOOD 1
			4.0/4.0	48	66	WALL UTILITY CABINET LEFT	N/A



CLEARANCE TO COMBUSTIBLES

HOODS #	SURFACE	CLEARANCE
1	TOP	0"
	FRONT	0"
	BACK	0"
	LEFT	0"
2	RIGHT	0"
	TOP	0"
	FRONT	0"
	BACK	0"
3,4	LEFT	18"
	RIGHT	18"
	TOP	18"
	FRONT	18"

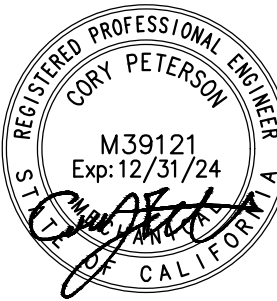
- 18" CLEARANCE TO COMBUSTIBLES CONFORMS TO UL710 STANDARD.
- HOOD MOUNTED UTILITY CABINETS REQUIRE 36" SERVICE CLEARANCE.



- REVIEWED -
EUREKA BUILDING DEPARTMENT
531 "K" STREET 441-4155
This plan check shall not be construed to be a permit for, or an approval of, any violation of the provisions of the Eureka Building Code
Reviewed by: BR Date: 10/9/24
Permit #: B-24-384



BELDEN
CONSULTING ENGINEERS
4457 Willow Road, Suite 100
Picoastor, California 94588
phone: (925) 621-5300 fax: (925) 203-5758
beldenbeldeninc.com
24013/NS

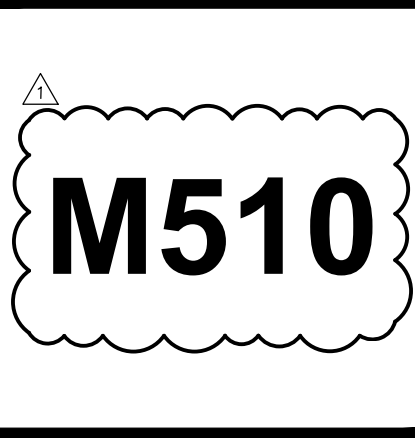


1000 LINCOLN ROAD, SUITE H202
EUREKA, CALIFORNIA 95501
TEL: 530-755-4700
FAX: 530-755-4567

1917 5TH ST.
EUREKA, CA 95501
A.P.N 002-105-018

HOOD DRAWINGS

Project Number:	
Plan Check Number:	
01/31/2024	VERSION 2023.04
09/24/2024	OWNER REVISION



BELDEN
CONSULTING ENGINEERS
4457 Willow Road, Suite 100
Pescadero, California 94958
phone: (925) 621-5300 fax: (925) 203-5758
belden@beldeninc.com
24013/NS

REVISIONS

NO.	DESCRIPTION	DATE

CAPTIVE
Southern CA National Accounts
www.captive.com
3822 Deer Ave. Suite 202, Turin, CA 95725 PHONE: (714) 977-2385 EMAIL: info@captive.com

EXHAUST FAN INFORMATION - JOB#6815900

FAN UNIT NO.	TAG	QTY	FAN UNIT MODEL #	MANUFACTURER	CFM	ESP	RPM	MOTOR ENCL.	HP	BHP	PHASE	VOLT	FLA	DISCHARGE VELOCITY	WEIGHT (LBS)	CSNCS
1		1	DUB0HFA	CAPTIVEAIR	1800	1.750	1197	TEFC,PREMIUM	2.000	1.1720	3	208	7.3	416 FPM	196	15.2
2		1	DUB0HFA	CAPTIVEAIR	1800	1.750	1197	TEFC,PREMIUM	2.000	1.1720	3	208	7.3	416 FPM	196	15.2
3	FRYER	1	DUB0HFA	CAPTIVEAIR	1750	1.750	1195	ODP,PREMIUM	2.000	1.1510	3	208	6.1	404 FPM	162	15.1

MUA FAN INFORMATION - JOB#6815900

FAN UNIT NO.	TAG	QTY	FAN UNIT MODEL #	BLOWER HOUSING	MIN CFM	DESIGN CFM	ESP	RPM	MOTOR ENCL.	HP	BHP	PHASE	VOLT	FLA	MCA	MCCP	WEIGHT (LBS)	CSNCS	
4		1	AR-D250-200	20MP-2-ND	AR-D250	2500	4300	0.500	1596	ODP,PREMIUM	5.000	3.9800	3	208	15.0	20A	30A	702	15.9

GAS FIRED MAKE-UP AIR UNIT(S)

FAN UNIT NO.	TAG	INPUT BTUH	OUTPUT BTUH	TEMP RISE	REQUIRED INPUT GAS PRESSURE	GAS TYPE	BURNER EFFICIENCY(%)
4		239567	22402	48°F	7 IN. W.C. - 14 IN. W.C.	NATURAL	92

FAN OPTIONS

FAN UNIT NO.	TAG	QTY	DESCRIPTION
1		1	UPBLAST FAN WHEEL ACCESS PORT
		1	EXHAUST FAN HEAT BAFFLE
2		1	FAN BASE CERAMIC SEAL - DU/BRIBHFA - INSTALLED AT PLANT - FOR GREASE DUCTS
		1	2 YEAR PARTS WARRANTY
3	FRYER	1	UPBLAST FAN WHEEL ACCESS PORT
		1	EXHAUST FAN HEAT BAFFLE
4		1	FAN BASE CERAMIC SEAL - DU/BRIBHFA - INSTALLED AT PLANT - FOR GREASE DUCTS
		1	2 YEAR PARTS WARRANTY

FAN ACCESSORIES

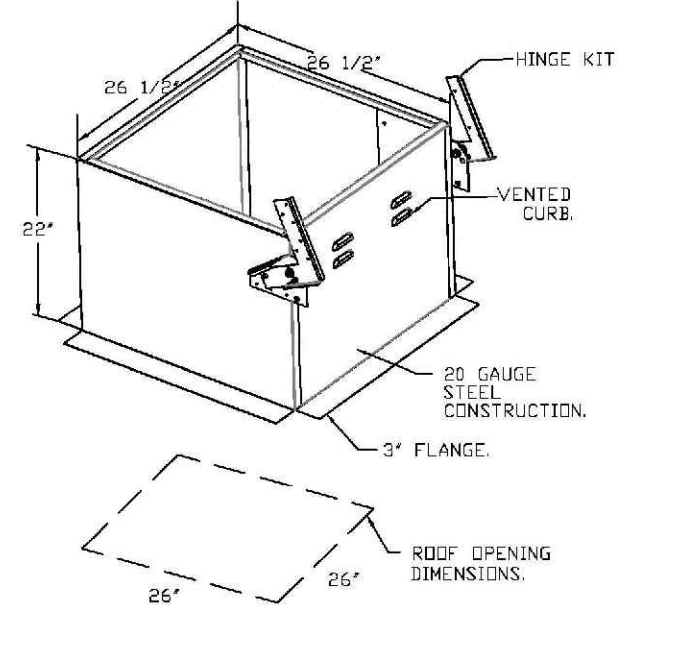
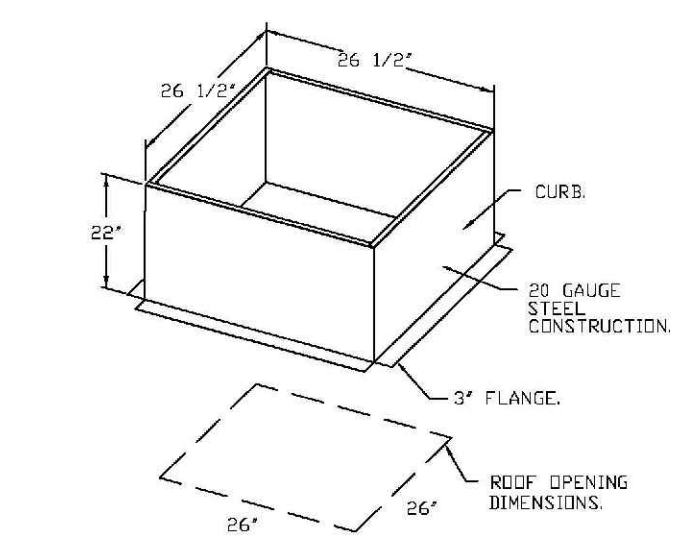
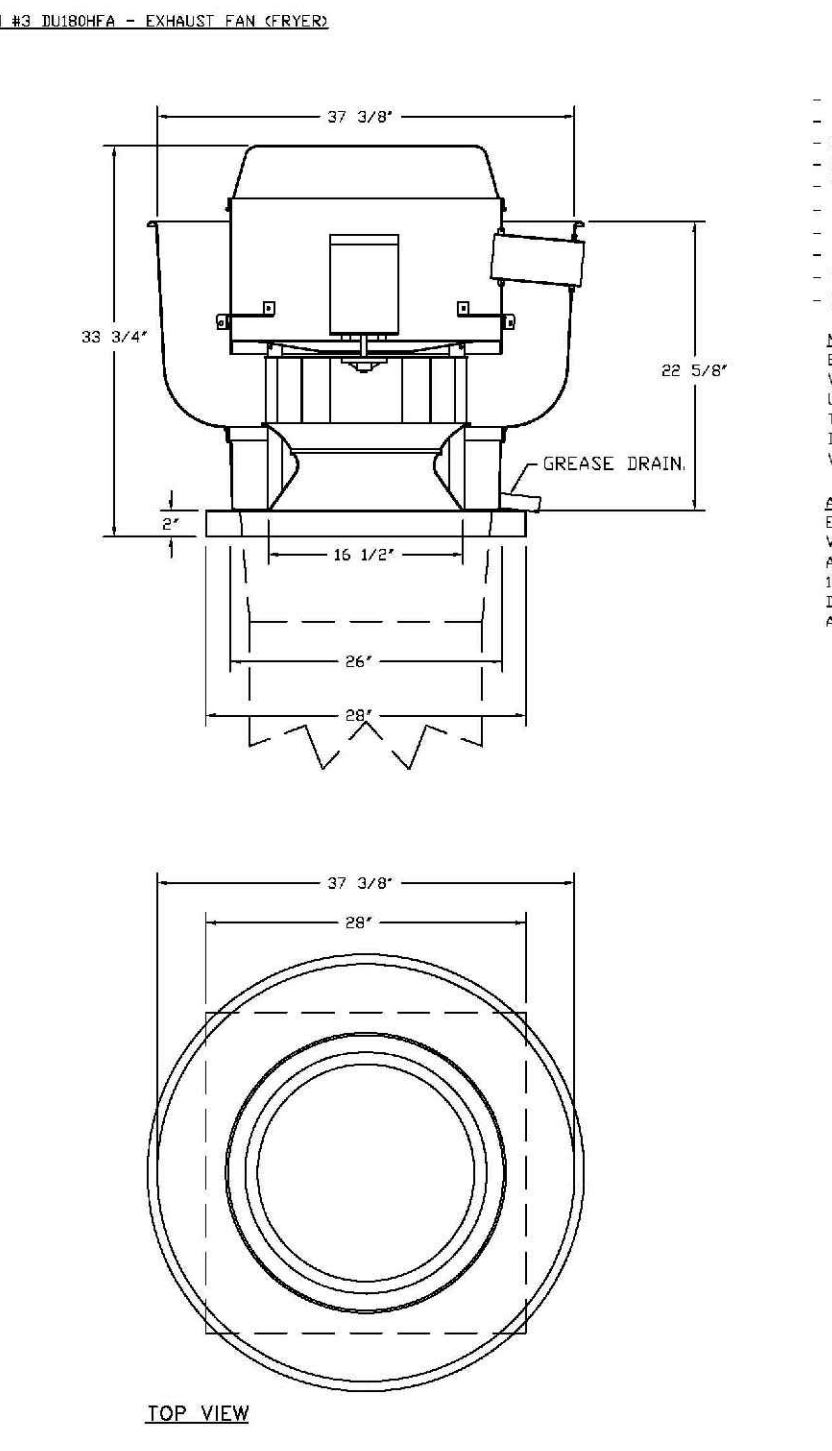
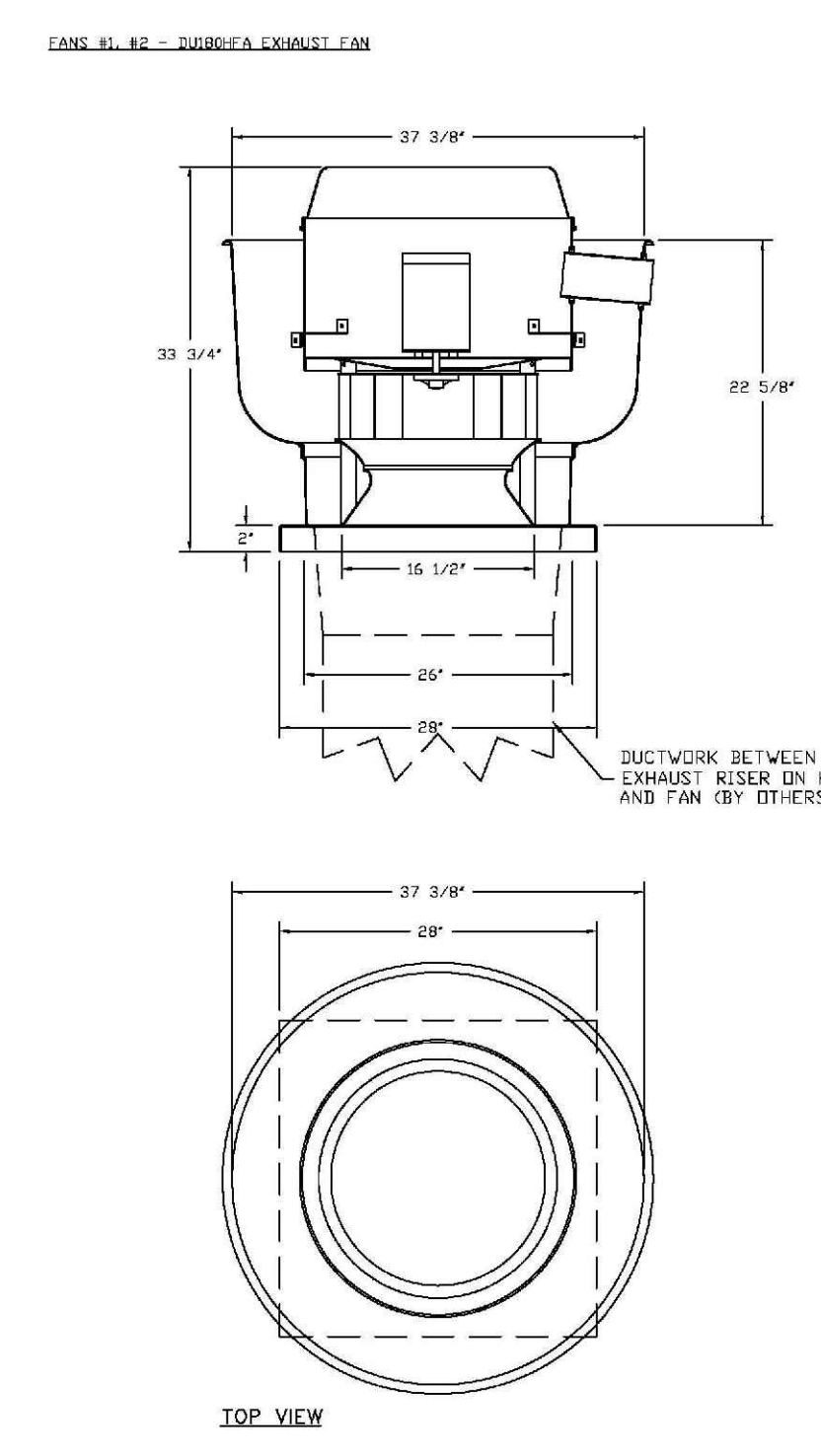
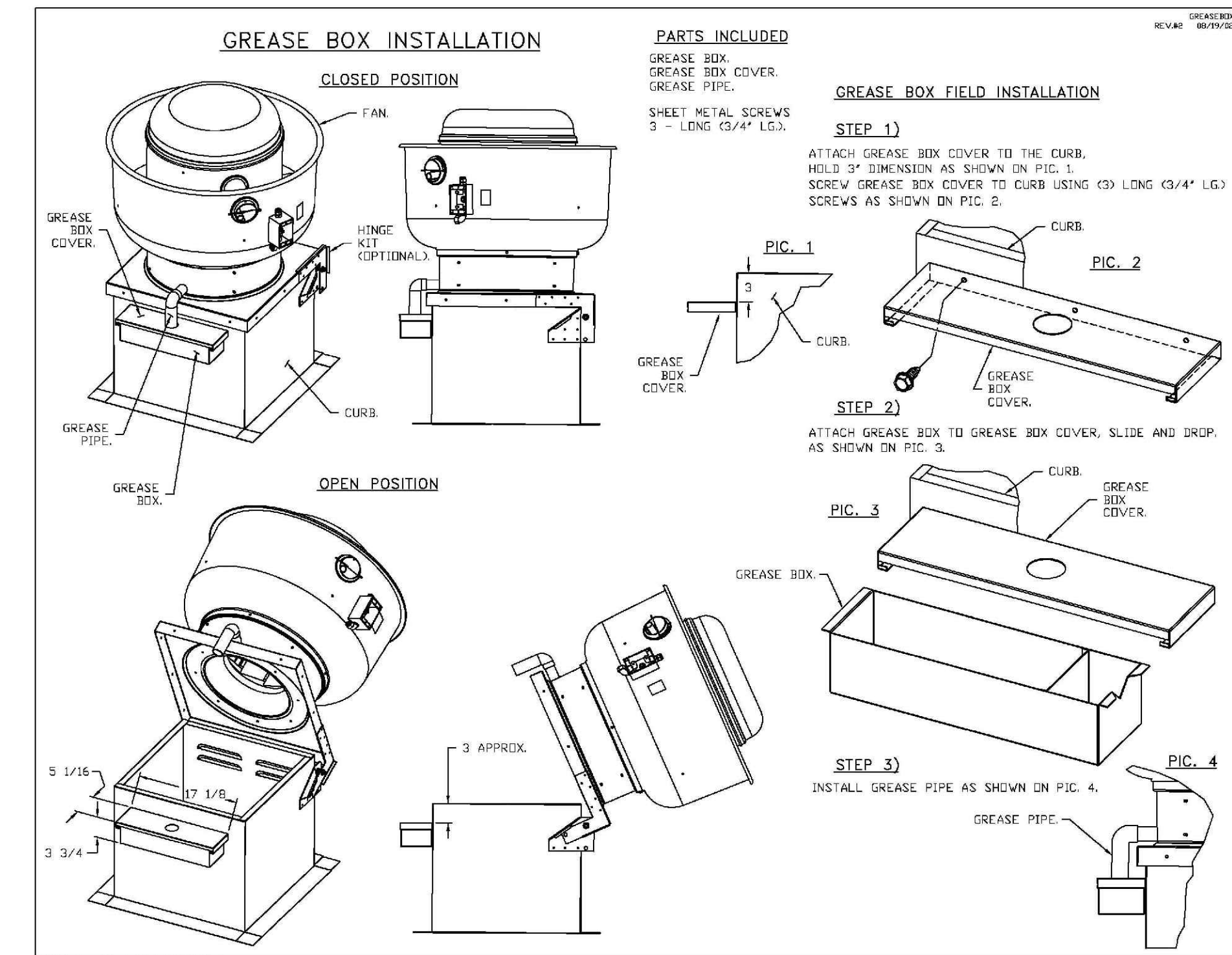
FAN UNIT NO.	TAG	EXHAUST	SUPPLY
		GREASE CUP	GRAVITY DAMPER
		WALL MOUNT	SIDE DISCHARGE
		GRAVITY DAMPER	MOTORIZED DAMPER
		WALL MOUNT	WALL MOUNT
3	FRYER	YES	YES
4			YES

CURB ASSEMBLIES

NO.	IN FAN	TAG	WEIGHT	ITEM	SIZE
1	# 1		30 LBS	CURB	26.500"W X 26.500"L X 22.000"H
2	# 2		30 LBS	CURB	26.500"W X 26.500"L X 22.000"H
3	# 3	FRYER	34 LBS	CURB	26.500"W X 26.500"L X 22.000"H VENTED HINGED
4	# 4		30 LBS	CURB	31.000"W X 29.500"L X 22.000"H INSULATED

HMI SCHEDULE

UNIT NUMBER	HMI #	HMI LOCATION	TEMP AVERAGING	MODBUS ADDRESS
FAN #4	HMI #1 - UNIT HMI #1	MOUNTED IN UNIT	NOT AVERAGED	95



RECEIVED
10/02/2024
EUREKA BUILDING DEPARTMENT

- REVIEWED -
EUREKA BUILDING DEPARTMENT
531 "K" STREET 441-4155
This plan check shall not be construed to be a permit for, or an approval of, any violation of the provisions of the Eureka Building Code
Reviewed by: BR Date: 10/9/24
Permit #: B-24-384