

HVAC SYMBOLS LEGEND

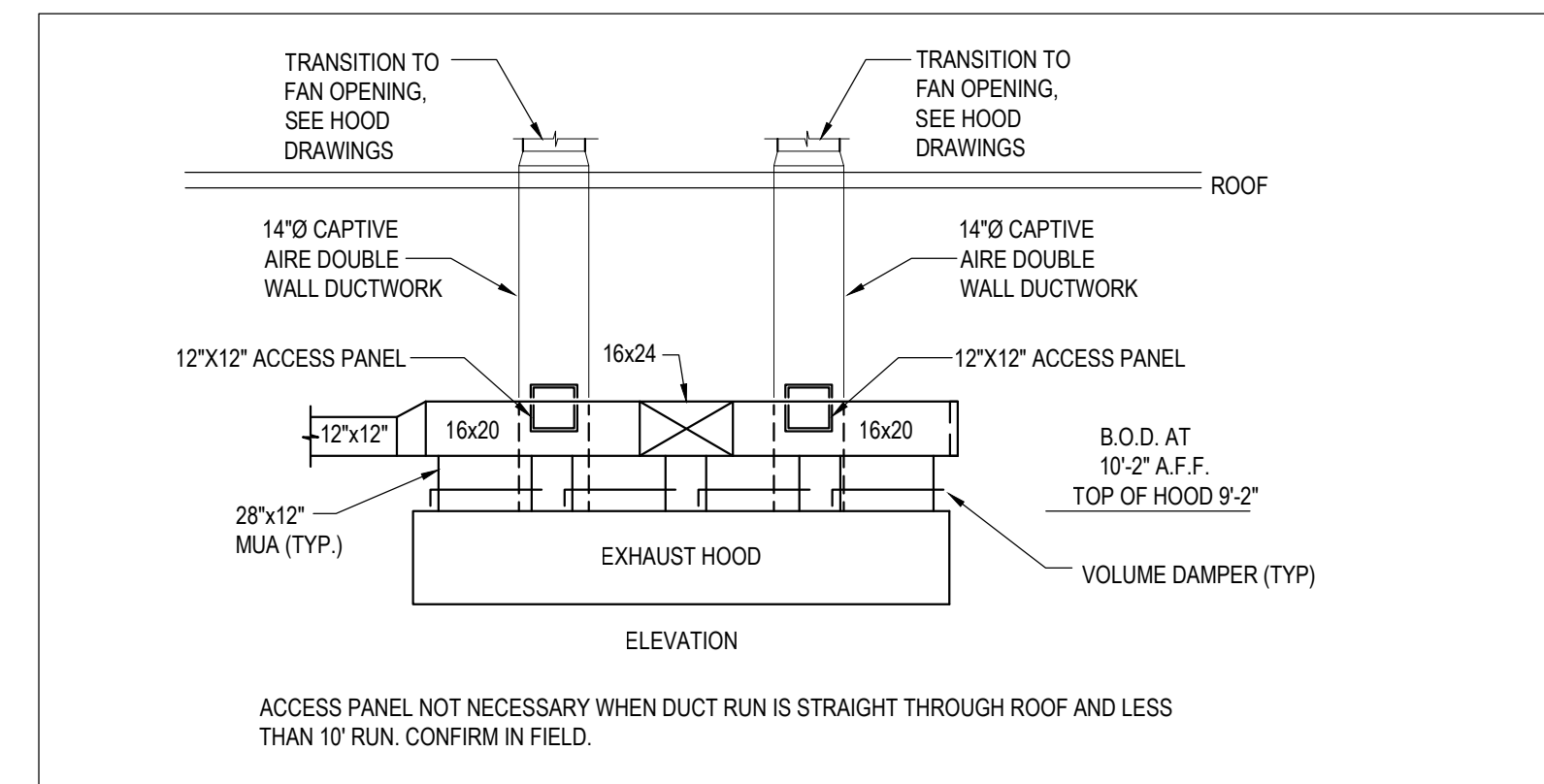
<ul style="list-style-type: none"> Supply Air Diffuser Volume Damper T.G.C. (Tenant General Contractor) G.C. (General Contractor) R.L. (Refrigerant Liquid Line) R.D. (Refrigerant Discharge Line) R.S. (Refrigerant Suction Line) O.A. (Outdoor Air) R.A. (Return Air) S.A. (Supply Air) 	<ul style="list-style-type: none"> Return Air Grille G (Gas Line) D (Condensate Drain Line) M (Motorized Damper) S (Smoke Detection Device) T (Thermostat) SD (Smoke Detector) TE (Toilet Exhaust) 	<ul style="list-style-type: none"> R.A.G. (Return Air Grille) DIFF. (Diffuser) M.D. (Manual Damper) F.C. (Flexible Connection) Air Device Type Air Volume in Cubic Feet/Minute (CFM) H (Humidity Sensor)
---	--	---

KEY NOTES

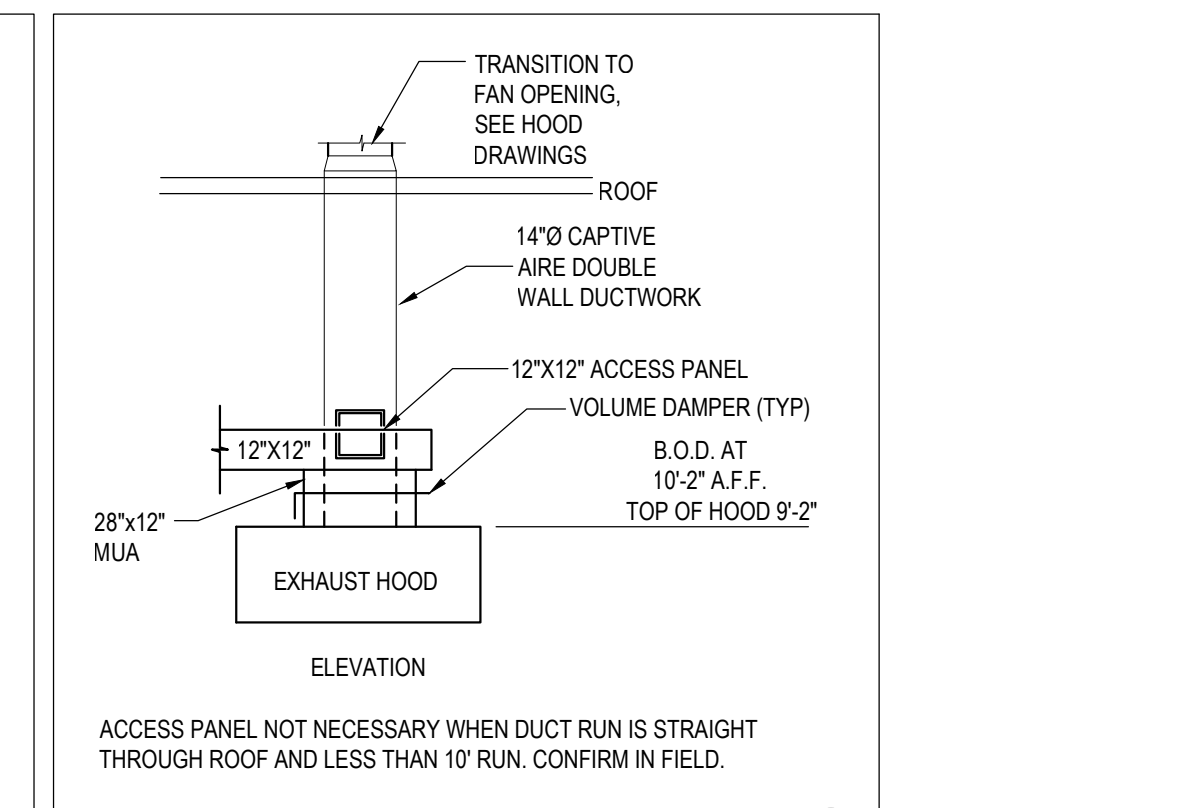
- NEW TYPE I EXHAUST HOOD WITH SUPPLY AIR FSP AND 3" INTERNAL STANDOFF WHICH INCLUDES A 1" LAYER OF INSULATION FACTORY INSTALLED TO MEET 0 INCH REQUIREMENTS FOR CLEARANCE TO UNFINISHED SURFACES. REFER TO HOOD DRAWINGS FOR INFORMATION.
- LOCATION OF CONTROLS PANEL AND HOOD FIRE SUPPRESSION COMPONENTS IN HOOD. SEE DETAILS AND INFORMATION ON SHEETS M500 AND M520.
- 14"Ø CAPTIVE AIRE DOUBLE WALL EXHAUST DUCT FROM EXHAUST HOOD CONNECTION (TYPICAL OF 2) ROUTE 14"Ø EXHAUST DUCT UP THRU ROOF TO NEW EXHAUST FAN (EF-1,2). DUCT SHALL BE FACTORY DOUBLE WALL GREASE EXHAUST EQUIVALENT DUCTWORK. CAPTIVE AIRE DUCTWORK BY HABIT BURGER, INSTALLED BY GC. INSTALL DUCTWORK TO AVOID INTERFERENCE WITH STRUCTURE. SEE DETAILS AND INFORMATION ON SHEETS M400, M500, AND M510 FOR EQUIVALENT FIRE-WRAP INSTALLATION. PERFORM GREASE DUCT PRESSURE TESTING. REFER TO SHEET MEP100 FOR LOCATION.
- REMOTE MANUAL PULL STATION FOR HOOD FIRE SUPPRESSION SYSTEM FOR NEW HOOD. INSTALLED BY "F.S.E.C." AS SHOWN AT 44" A.F.F. AND AT LEAST 10'-0" BUT NO MORE THAN TO 20'-0" AWAY FROM HOOD. VERIFY FINAL PLACEMENT WITH LOCAL JURISDICTION.
- PROVIDE TRAPEZE SUPPORT FOR HOOD HANGING ROD TO AVOID INTERFERENCE WITH HOOD HANGING AND DUCT INSTALLATION.
- ROUTE WATER HEATER 3" PVC FLUE VENT AND 3" COMBUSTION AIR INTAKE TO CONTRACTOR FURNISHED AND INSTALLED CONCENTRIC VENT TERMINATION KIT. CONCENTRIC VENT KIT SHALL BE MANUFACTURER APPROVED CONCENTRIC VENT DISCHARGE. (PEX #19816 OR EQUIVALENT. TERMINATE PER MANUFACTURER'S INSTRUCTION. REFER TO SHEET MEP100 FOR CONTINUATION. REFER TO PLUMBING FIXTURE SCHEDULE ON SHEET P100 FOR INFORMATION.
- DENOTES DUCT DROP DOWN THRU ROOF FROM ROOF MOUNTED EQUIPMENT. REFER TO SHEET MEP100 FOR CONTINUATION. FOR RTU-1,2. PROVIDE TRANSITIONS AROUND STRUCTURE AS NECESSARY. VERIFY EXACT LOCATION OF ROOF PENETRATION IN FIELD.
- FURNISH AND INSTALL SMOKE DETECTOR IN THE SUPPLY AIR DUCT INSIDE THE ROOFTOP UNIT. ENSURE SMOKE DETECTION DEVICE IS TO BE INTERLOCKED WITH ROOFTOP UNIT SO AS TO SHUT UNIT DOWN UPON THE DETECTION OF SMOKE. SYSTEM SHALL BE EQUIPPED WITH AN AUTOMATIC SHUTOFF. AUTOMATIC SHUTOFF SHALL BE ACCOMPLISHED BY INTERRUPTING THE POWER SOURCE OF THE AIRMOVING EQUIPMENT UPON DETECTION OF SMOKE.
- CONTRACTOR TO PROVIDE HONEYWELL VISION PRO 8000 PROGRAMMABLE THERMOSTAT MODEL TH8322W1001 FOR RTU-1 AND RTU-2. PROVIDE LOW VOLTAGE WIRING AS RECOMMENDED BY THE ROOFTOP UNIT MANUFACTURER.
- PROVIDE HONEYWELL REMOTE SENSOR MODEL TR-21 FOR HONEYWELL THERMOSTAT SERVING RTU-1 AND RTU-2. INSTALL AT CEILING/SOFT AS SHOWN. PROVIDE LOW VOLTAGE WIRING AS RECOMMENDED BY THE ROOFTOP UNIT MANUFACTURER.
- PROVIDE SIMPLEX GRINNELL REMOTE ANNUNCIATION AND KEYED RESETS MODEL #4998-8942 CONTROL STATION (OR APPROVED EQUAL). INTERLOCK WITH EACH DUCT SMOKE DETECTOR WITH THE ROOFTOP UNIT OF THE AREA SERVED. DUCT SMOKE DETECTOR TROUBLE CONDITIONS SHALL ACTIVATE A VISUAL OR AUDIBLE SIGNAL AND SHALL BE IDENTIFIED AS AIR DUCT DETECTOR TROUBLE. THE ENUNCIATOR SHALL BE EQUIPPED WITH KEY-OPERATED DETECTOR TEST AND RESET FUNCTIONS. TENANT'S CONTRACTOR SHALL INSTALL AT WALL ABOVE THERMOSTATS OF OFFICE AREA AS SHOWN. GC TO COORDINATE LOCATIONS OF THERMOSTATS IN OFFICE TO NOT CONFLICT WITH WALL CABINETS AND COUNTER.
- NEW LOW PRESSURE SUPPLY AND RETURN AIR DUCT WITH EXTERNAL DUCT INSULATION IN AREAS ABOVE CEILING SUPPLIED AND INSTALLED BY MECHANICAL CONTRACTOR. SEE DUCT INSULATION SCHEDULE. PROVIDE TRANSITIONS AS REQUIRED. DUCT DIMENSIONS ARE CLEAR INTERNAL AIR PATH DIMENSIONS. (EXPOSED DINING ROOM DUCTWORK DOES NOT REQUIRE INSULATION.)
- PROVIDE VOLUME DAMPERS AT ALL DUCT BRANCH TAKE-OFFS. SEE DETAIL ON SHEET M400. (TYPICAL)
- RETURN AIR DUCT DROP WITH SIDE GRILLES ON BOTH SIDES. COORDINATE EXACT LOCATION OF DUCT WITH DEMISING WALL. SEE PLAN FOR SIZES.
- 10"Ø TOILET EXHAUST DUCT UP THRU ROOF BETWEEN TRUSS. PROVIDE BIRD SCREEN RAIN CAP AT EXHAUST DISCHARGE ABOVE ROOF. REFER TO SHEET MEP100 FOR CONTINUATION. REFER TO SHEET MEP100 FOR CONTINUATION.
- PROVIDE 2'x2' ACCESS PANEL WITH PHENOLIC PLASTIC NAMEPLATE FOR ABOVE HOOD ACCESS OF THE GREASE DUCT CLEANOUT. COORDINATE LOCATION WITH ALL TRADES. FIELD VERIFY LOCATION.
- REFER TO ARCH SHEETS FOR EXACT PLACEMENT OF EQUIPMENT AND MATERIALS AND COORDINATE THE INSTALLATION OF DUCTWORK WITH ARCHITECTURAL FEATURES AND LIGHTING.
- SEE STRUCTURAL PLANS AND DETAILS FOR ROOF TOP UNITS' FRAMINGS.
- 14"Ø CAPTIVE AIRE DOUBLE WALL EXHAUST DUCT FROM EXHAUST HOOD CONNECTION. ROUTE 14"Ø EXHAUST DUCT UP THRU ROOF TO NEW EXHAUST FAN (EF-3). DUCT SHALL BE INSTALLED IN 2-HOUR RATED ENCLOSURE (DUCT WRAP) OR SHALL BE DOUBLE WALL GREASE EXHAUST EQUIVALENT DUCTWORK. INSTALL DUCTWORK TO AVOID INTERFERENCE WITH STRUCTURE. SEE DETAILS AND INFORMATION ON SHEETS M400, M500, AND M510 FOR EQUIVALENT FIRE-WRAP INSTALLATION. PERFORM GREASE DUCT PRESSURE TESTING. REFER TO SHEET MEP100 FOR LOCATION.

- ### MECHANICAL GENERAL NOTES
- THE MECHANICAL CONTRACTOR SHALL VERIFY THAT ALL EQUIPMENT, AS SHOWN ON THESE DRAWINGS, WILL NOT CONFLICT WITH ANY DRAINS, SCUTTLES, JOINTS, VENTS, PIPING OR EQUIPMENT.
 - ALL ROOFTOP EQUIPMENT SHALL HAVE MANUFACTURER SUPPLIED ROOF CURBS AND PIPE SEALS.
 - THE MECHANICAL CONTRACTOR SHALL PROVIDE COMPLETE INFORMATION AND COOPERATION TO THE OTHER CONTRACTORS AND TRADES AS REQUIRED FOR COMPLETION AND COORDINATION OF THE COMPLETE PROJECT.
 - THE MECHANICAL CONTRACTOR SHALL BE RESPONSIBLE FOR ADMINISTERING ALL WARRANTIES ON EQUIPMENT INSTALLED BY THE CONTRACTOR. THIS INCLUDES, BUT IS NOT LIMITED TO REFRIGERANT LINES, FLUES, TENANT FURNISHED EQUIPMENT, ETC.
 - ALL OUTSIDE AIR INTAKES SHALL BE A MINIMUM OF 10'-0" FROM ANY EXHAUST FAN, FLUE OR PLUMBING VENT.
 - PROVIDE VIBRATION ISOLATION DEVICES AND FLEXIBLE CONNECTIONS TO ALL MOVING MACHINERY, EXCEPT EXHAUST FANS (UNLESS OF NOTES).
 - ALL FLEXIBLE DUCTS SHALL BE SUPPORTED EVERY 4'-0" WITH 2" WIDE GALVANIZED STEEL BANDS WITH A MINIMUM OF ONE PER EACH SECTION OF FLEXIBLE DUCT. NO FLEXIBLE DUCTWORK SHALL BE ALLOWED ABOVE INACCESSIBLE CEILINGS.
 - ALL DUCT DIMENSIONS SHOWN ON DRAWINGS ARE CLEAR INSIDE DIMENSIONS IN INCHES.
 - THE MECHANICAL CONTRACTOR SHALL COORDINATE ALL DUCT AND DIFFUSER LOCATIONS WITH LIGHTING LAYOUTS AS REQUIRED.
 - THE MECHANICAL CONTRACTOR SHALL COORDINATE WITH THE GENERAL CONTRACTOR AND OTHER TRADES. ALL REQUIRED OPENINGS AND EXCAVATIONS.
 - ALL REQUIRED OPENINGS IN FOUNDATIONS, FLOORS, WALLS AND ROOF SHALL BE CONSTRUCTED INTO THE STRUCTURE WITH THE USE OF SLEEVES, CURBS, ETC. CUTTING AND PATCHING SHALL BE HELD TO A MINIMUM.
 - FLEXIBLE DUCT MAX LENGTH IS 5'-0" AND NOT IN PLACE OF ELBOWS.

NOTE:
REFER TO SHEET MEP100 FOR HVAC ROOFTOP EQUIPMENT.



HOOD DETAIL 2 NTS



HOOD DETAIL 3 NTS

- REVIEWED -
EUREKA BUILDING DEPARTMENT
531 R STREET 441-4155
This plan check shall not be construed to be a permit for, or an approval of, any violation of the provisions of the Eureka Building Code
Reviewed by: BR Date: 10/9/24
Permit #: B-27-385
1/4"=1'-0"



VERSION: QUARTER 4 - 2023



1000 LINCOLN ROAD, SUITE H202
EUREKA, CALIFORNIA 95504
TEL: 530-755-4700
FAX: 530-755-4567

1917 5TH ST.
EUREKA, CA 95501
A.P.N 002-105-018

MECHANICAL FLOOR PLAN

Project Number:	
Plan Check Number:	
01/31/2024	VERSION 2023.04
09/24/2024	OWNER REVISION



M200

MECHANICAL FLOOR PLAN

HVAC SYSTEM T&B SCOPE OF WORK

ALL THIRD PARTY AIR BALANCE COMPANIES USED ON HABIT PROJECTS TO BE EITHER NEBB OR AABC CERTIFIED AND HAVE CURRENT CERTIFICATION AND APPLICABLE LICENSING. NOTE THAT THE COMPLETE AND FULL AIR BALANCE APPLIES TO ALL EQUIPMENT SERVICING HABITS TI SPACE INCLUDING HVAC, MAU, EXHAUST HOODS AND FANS, RESTROOM EXHAUST FANS AND PCU UNITS (WHERE OCCURS), REGARDLESS OF WHO SUPPLIES EQUIPMENT.

- INSPECTION
 - INSPECT GENERAL CONDITIONS OF HVAC SYSTEMS AND INSTALLATION. RECORD EQUIPMENT DATA AND COMPARE WITH DESIGN REQUIREMENTS.
- TESTING: TEST HVAC SYSTEMS FOR PROPER OPERATION
 - INSPECT ROOFTOP UNITS FOR PROPER OPERATION.
 - VERIFY FAN ROTATION
 - MEASURE/RECORD MOTOR AMPERAGE
 - MEASURE/RECORD VOLTAGE
 - VERIFY SEQUENCE OF OPERATION (TEST HEATING/COOLING MODES)
 - SET T-STATS TO HABIT STANDARDS:
 - OCCUPIED - 7:30 AM TO 11:30 PM - 74 DEGREES COOL 68 DEGREES HEAT - FAN SETTING - ON
 - UNOCCUPIED - 11:30 PM TO 7:30 AM - 80 DEGREES COOL 60 DEGREES HEAT - FAN SETTING - AUTO
 - VERIFY THAT ALL UNITS HAVE SPARE FAN BELT LOCATED INSIDE UNIT.
 - VERIFY DUCT SMOKE DETECTORS ARE INSTALLED AND CONNECTED / RESETS TO BE LOCATED IN OFFICE.
 - VERIFY AND SET ECONOMIZERS TO ENGINEERED DRAWING SPECIFICATIONS. SEE MECHANICAL SHEETS FOR DATA.
- MAKEUP AIR UNIT
 - INSPECT MUA UNIT FOR PROPER OPERATION.
 - VERIFY FAN ROTATION
 - MEASURE/RECORD MOTOR AMPERAGE
 - MEASURE/RECORD VOLTAGE
 - VERIFY SEQUENCE OF OPERATION (TEST HEATING/COOLING MODES)
 - SET EVAPORATOR THERMOSTAT ADJUSTMENT PER CAPTIVE AIRE'S SPECIFICATIONS
- BALANCE AND VERIFY:
 - BALANCE THE KITCHEN EXHAUST SYSTEM FOR PROPER HEAT AND SMOKE CAPTURE REMOVAL. VERIFY PROPER PERFORMANCE WITH SMOKE EMITTER TESTS.
 - BALANCE THE AIR CONDITIONING & HEATING UNITS FOR OPTIMAL AIR DISTRIBUTION AND COMFORT.
 - CORRECT FAN ROTATION, BELT TENSION, SHEAVE ALIGNMENT, DAMPER POSITION ON ALL UNITS. CHECK FOR CLEAN FILTERS AND COILS.
 - BALANCE THE BUILDING FOR PROPER FRESH AIR QUANTITIES AND PRESSURIZATION IN ALL AREAS OF THE STORE.
- MEASUREMENTS:
 - MEASURE AND RECORD AIRFLOW, MOTOR SPEED, MOTOR AMP DRAW, AND COMPARE TO NAMEPLATE DATA AND SPECIFICATIONS.
- ADJUSTMENTS:
 - REDUCE FAN SPEEDS WHEN POSSIBLE TO SAVE FAN ENERGY AND CONDITIONED AIR, AND REDUCE NOISE LEVELS, WHILE MAINTAINING COMFORT.
 - BALANCED SYSTEM NEEDS TO MAINTAIN POSITIVE BUILDING PRESSURE ONCE COMPLETE.
- TOLERANCE:
 - HVAC SYSTEM AIRFLOWS TO BE BALANCED WITHIN +/- 5% OF DESIGN.
- PERFORMANCE VERIFICATION:
 - UPON COMPLETION OF THE BALANCE, VERIFY HVAC PERFORMANCE VIA SIGHT POSITIVE BUILDING PRESSURE, OCCUPANT COMFORT, AND CAPTURE AND CONTAINMENT OF KITCHEN HOODS.
- DOCUMENTATION AND CLARIFICATIONS:
 - SUBMIT A NEBB OR AABC CERTIFIED TEST AND BALANCE REPORT WITH FINDINGS INCLUDING THE EQUIPMENT DATA, MEASUREMENTS, LIST OF DEFICIENCIES, AND RECOMMENDATIONS. THIS INFORMATION TO BE SUBMITTED DIRECTLY TO THE ARCHITECT FOR RECORD FOR REVIEW, COMMENT AND APPROVAL BY THEIR RESPECTIVE MECHANICAL ENGINEER. HABIT TO BE COPIED ON THESE CORRESPONDENCES.
 - PROVIDE EQUIPMENT COMMISSIONING REPORTS TO ARCHITECT OF RECORD. HABIT TO BE COPIED ON THESE CORRESPONDENCES.
 - INSTALLING HVAC CONTRACTOR CANNOT SELF CERTIFY OR BE THE RECORDING AGENT OF T&B.
 - IF T&B REPORT IS INCOMPLETE OR FAILS REVIEW, HABIT AT ITS OWN DISCRETION MAY CHOOSE TO HAVE THE ENTIRE SYSTEM RETESTED BY AN ACCREDITED AIR BALANCE COMPANY OF OUR CHOOSING. THE COST OF SAID RE-TEST WILL COME AT THE DIRECT EXPENSE OF THE CONTRACTED GC OF THE PROJECT.

LOAD COMPONENT SUMMARY

HVAC SYSTEM HEATING AND COOLING LOADS SUMMARY										
Project Name: The Habit Grill		Date: 2/22/2024		System Name: RTU-1		Floor Area: 1,114				
ENGINEERING CHECKS					SYSTEM LOAD					
Number of Systems: 1					COIL COOLING PEAK					
Heating System					CFM		Sensible		Latent	
Output per System: 103,000					4,036		78,031		2,646	
Total Output (Btu/h): 103,000										
Cooling System					CFM		Sensible		Latent	
Output per System: 98,000					800		-4,541		-498	
Total Output (Btu/h): 98,000										
Total Output (Tons): 8.2										
Total Output (Btu/h) (Sensible): 88.0										
Total Output (Sensible/Ton): 136.4										
Air System					TOTAL SYSTEM LOAD					
CFM per System: 3,400					4,036		78,031		2,646	
Airflow (cfm): 3,400					4,036		78,031		2,646	
Airflow (cfm/ton): 3.05					4,036		78,031		2,646	
Airflow (cfm/ton): 416.3					4,036		78,031		2,646	
Outside Air (%): 23.5%					800		-4,541		-498	
Outside Air (cfm/ton): 0.72					800		-4,541		-498	
Total Adjusted System Output (Adjusted for Peak Design Conditions): 80,727					80,727		21,055		103,000	
Note: values above given at ARI conditions					TIME OF SYSTEM PEAK (Adjusted for Peak Design Conditions): Jul 5 PM					
HEATING SYSTEM PSYCHROMETRICS (Airstream Temperatures at Time of Heating Peak)					Jan 1 AM					

HVAC SYSTEM HEATING AND COOLING LOADS SUMMARY										
Project Name: The Habit Grill		Date: 2/22/2024		System Name: RTU-2		Floor Area: 1,110				
ENGINEERING CHECKS					SYSTEM LOAD					
Number of Systems: 1					COIL COOLING PEAK					
Heating System					CFM		Sensible		Latent	
Output per System: 54,000					2,694		51,707		2,637	
Total Output (Btu/h): 54,000										
Cooling System					CFM		Sensible		Latent	
Output per System: 58,500					800		-7,357		-1,281	
Total Output (Btu/h): 58,500										
Total Output (Tons): 4.9										
Total Output (Btu/h) (Sensible): 52.7										
Total Output (Sensible/Ton): 227.8										
Air System					TOTAL SYSTEM LOAD					
CFM per System: 2,000					2,694		51,707		2,637	
Airflow (cfm): 2,000					2,694		51,707		2,637	
Airflow (cfm/ton): 1.88					2,694		51,707		2,637	
Airflow (cfm/ton): 410.3					2,694		51,707		2,637	
Outside Air (%): 40.0%					800		-7,357		-1,281	
Outside Air (cfm/ton): 0.72					800		-7,357		-1,281	
Total Adjusted System Output (Adjusted for Peak Design Conditions): 48,353					48,353		11,492		54,000	
Note: values above given at ARI conditions					TIME OF SYSTEM PEAK (Adjusted for Peak Design Conditions): Sep 4 PM					
HEATING SYSTEM PSYCHROMETRICS (Airstream Temperatures at Time of Heating Peak)					Jan 1 AM					

OUTSIDE AIRFLOW RATE TABLE							
ROOM DESIGNATION	AREA (SQ. FT.)	CLASSIFICATION	CFM/PERSON	OCCUPANCY	CFM FOR OCCUPANTS	CFM/SQ. FT.	CFM FOR AREA
DINING AREA	567	DINING	7.5	50	375	0.18	102.06
COOK LINE	366	KITCHEN	7.5	10	75	0.12	43.92
EXPO	78	KITCHEN	7.5	2	15	0.12	9.36
OFFICE	40	OFFICE	5	2	10	0.06	2.4
CORRIDOR	58	CORRIDOR	0	0	0	0.06	3.48
REAR KITCHEN	495	KITCHEN	7.5	5	37.5	0.12	59.4
			TOTAL REQUIRED OUTSIDE AIR (CFM)		600		
			TOTAL OUTSIDE AIR SUPPLIED BY RTU-1,2 (CFM)		600		

- REVIEWED -
 EUREKA BUILDING DEPARTMENT
 531 7th STREET 441-4155
 This permit shall not be construed to be a permit for, or an approval of, any violation of the provisions of the Eureka Building Code
 Reviewed by: BR Date: 10/9/24
 Permit #: B-24-38

AIR DEVICE SCHEDULE

PLAN MARK	QTY.	MODEL NO.	FACE SIZE	NECK SIZE	FLEX SIZE	TYPE	NOTES
A	5	*TITUS TMR - AA	22" RD	12" RD	12" RD	UNIFORM 360° SUPPLY DIFFUSER	2,3
B	0	*TITUS TMR - AA	15" RD	8" RD	8" RD	UNIFORM 360° SUPPLY DIFFUSER	2,3
C	3	*TITUS PAS	12"x12"	8" RD.	8" RD.	PERFORATED SUPPLY DIFFUSER	2,3,5
D	1	*TITUS PAS	16"x16"	10" RD.	10" RD.	PERFORATED SUPPLY DIFFUSER	1,3,5
E	5	*TITUS PAR	24"x24"	12" RD.	12" RD.	PERFORATED SUPPLY DIFFUSER	2,3,4,7
F	3	*TITUS PAS	24"x24"	12" RD.	12" RD.	PERFORATED SUPPLY DIFFUSER	2,3,4
G	1	*TITUS PAS	12"x12"	8" RD.	8" RD.	PERFORATED SUPPLY DIFFUSER	2,3,4
H	2	*TITUS PAR	12"x24"	8" RD.	8" RD.	PERFORATED RETURN GRILLE	3,4,6
I	2	*TITUS PAR	24"x24"	22"x22"	16" RD.	PERFORATED RETURN GRILLE	3,4
J	2	*TITUS 350FL	24"x18"	24"x16"	-	RETURN GRILLE	3,8
K	0	*TITUS PAR	12"x24"	10"x22"	10" RD.	PERFORATED SUPPLY DIFFUSER	2,3,4,7
L	0	*TITUS PAR	24"x24"	24"x24"	16" RD.	RETURN GRILLE	3,4

- NOTES:**
- PROVIDE VERTICAL PATTERN CONTROLLER
 - REFER TO PLAN FOR THROW PATTERN ORIENTATION
 - PROVIDE MANUAL VOLUME DAMPER
 - FRAME SHALL FIT LAY-IN CEILING MODULE
 - FRAME SHALL FIT GYPSUM BOARD CEILING/SURFACE
 - TRANSFER GRILLE
 - DOWN DISCHARGE TYPE SUPPLY AIR DIFFUSER
 - PAINT THE SHEET METAL BACKING BLACK AT THE RETURN AIR GRILLES IN THE DINING ROOM.
 - FABRICATE PLENUM BOX FOR RETURN AIR GRILLE IN FIELD. REFER TO MECHANICAL FLOOR PLAN FOR SIZE.
 - WALL MOUNTED RETURN AIR GRILLE. VERIFY MOUNTING HEIGHT AND COLOR WITH ARCHITECT.
- * OR EQUAL APPROVED IN WRITING BY OWNER/OWNER'S REPRESENTATIVE

EXHAUST FAN SCHEDULE (EF-4, EF-5, EF-6)

MANUFACTURER	MODEL NO.	TOTAL S.P. IN WG.	DRIVE	MOTOR HP	NOMINAL RPM	CFM	SONES	VOLTS	PH	HZ	WEIGHT
GREENHECK	SP-8150	0.375"	DIRECT	128 W	1,050	150	3.5	120	1	60	10 LBS.

NOTES:

- PROVIDE BACKDRAFT DAMPER.
- INTERLOCK FAN WITH LIGHTSWITCH.
- PROVIDE WITH FAN SPEED CONTROLLER.

EXHAUST FAN SCHEDULE (EF-1, EF-2)

MANUFACTURER	MODEL NO.	TOTAL S.P. IN WG.	DRIVE	MOTOR HP	NOMINAL RPM	CFM	SONES	VOLTS	PH	HZ	WEIGHT
CAPTIVE AIRE	DU180FA	1.15	DIRECT	1.5 HP	995	1800	9.9	208	3	60	177

NOTES:

- SEE CAPTIVE AIRE PLANS FOR ADDITIONAL INFORMATION.

EXHAUST FAN SCHEDULE (EF-3)

MANUFACTURER	MODEL NO.	TOTAL S.P. IN WG.	DRIVE	MOTOR HP	NOMINAL RPM	CFM	SONES	VOLTS	PH	HZ	WEIGHT
CAPTIVE AIRE	DU180FA	1.25	DIRECT	2.0 HP	1026	1750	10.4	208	3	60	166

NOTES:

- SEE CAPTIVE AIRE PLANS FOR ADDITIONAL INFORMATION.

HVAC SYMBOLS LEGEND

	SUPPLY AIR DIFFUSER		RETURN AIR GRILLE		R.A.G. RETURN AIR GRILLE
	VOLUME DAMPER		GAS LINE		DIFF. DIFFUSER
	TENANT GENERAL CONTRACTOR		CONDENSATE DRAIN LINE		M.D. MANUAL DAMPER
	GENERAL CONTRACTOR		MOTORIZED DAMPER		F.C. FLEXIBLE CONNECTION
	REFRIGERANT LIQUID LINE		SMOKE DETECTION DEVICE		AIR DEVICE TYPE
	REFRIGERANT DISCHARGE LINE		THERMOSTAT		AIR VOLUME IN CUBIC FEET/MINUTE (CFM)
	REFRIGERANT SUCTION LINE		SMOKE DETECTOR		
	OUTDOOR AIR				
	RETURN AIR				
	SUPPLY AIR		TOILET EXHAUST		

EQUIPMENT AIR BALANCE SCHEDULE

UNIT	AREA SERVED	SUPPLY AIR CFM	RETURN AIR CFM	OUTSIDE AIR CFM	MAKE-UP AIR CFM	EXHAUST AIR CFM	PRESSURE CFM
RTU-1	KITCHEN	4000	3200	800			+800
RTU-2	DINING	3000	2200	800			+800
MAU-1	HOOD				4300		+4300
EF-1	HOOD-1					1800	-1800
EF-2	HOOD-1					1800	-1800
EF-3	HOOD-1					1750	-1750
EF-4	TOILET					150	-150
EF-5	TOILET					150	-150
EF-6	TOILET					150	-150
TOTALS		7000	5400	1600	4300	5800	+100

NEW ROOFTOP UNIT SCHEDULE (RTU-1-KITCHEN)

MFR.	MODEL NO.	TOTAL UNIT WT.	SIZE	VOLTS	HZ	PH	MCA	MOC/P	MIN. OUTSIDE AIR CFM	NO.	FILTERS	TYPE
CARRIER	48FC0D9	1400 LBS.	8.5 TONS	208	60	3	45	50	800	4	20x20x2	MERV 13
TOTAL CFM		COOLING CAPACITY		EER (SEER)		GAS HEAT CAPACITY		AFUE%		EVAP. COIL		EVAPORATOR FAN MOTOR
		SENSIBLE TOTAL		INPUT OUTPUT		INPUT OUTPUT		SIZE ROWS		SIZE ROWS		
3,400		73.5 MBH 98.0 MBH		11.2 (15.0)		125.0 MBH 103.0 MBH		82		11.1 SQ.FT.		4 3.7 HP

NOTES:

- INCLUDES FAN AND MOTOR HEAT.
- CONTRACTOR SHALL PROVIDE HONEYWELL VISION PRO 8000 MODEL TH8321WF1001 PROGRAMMABLE THERMOSTAT AND REMOTE SENSOR MODEL TR-21.
- BLOWER FAN MAINTAINS CONTINUOUS OPERATION DURING OCCUPIED HOURS.
- INCLUDES FACTORY INSTALLED LOW LEAK ECONOMIZER FACTORY INSTALLED OPTION FAULT DETECTION & DIAGNOSTICS (FDD) WITH BAROMETRIC RELIEF.
- PROVIDE 14" HIGH ROOF CURB.
- UNIT EQUIPPED WITH MULTI-SPEED AIR VOLUME BLOWER. BOTH THE LOW SPEED MINIMUM POSITION AND THE HIGH SPEED MINIMUM POSITION SETTING SHALL BE BALANCED TO CFM SPECIFIED.
- INCLUDES NON-POWER CONVENIENCE OUTLET AND DISCONNECT.
- PROVIDE UNIT WITH HUMIDIFIER/HOT GAS REHEAT AND RETURN DUCT MOUNTED HUMIDITY SENSOR.

NEW ROOFTOP UNIT SCHEDULE (RTU-2-DINING)

MFR.	MODEL NO.	TOTAL UNIT WT.	SIZE	VOLTS	HZ	PH	MCA	MOC/P	MIN. OUTSIDE AIR CFM	NO.	FILTERS	TYPE
CARRIER	48FC0D6	1,200 LBS.	5.0 TONS	208	60	3	29	40	800	4	20x20x2	MERV 13
TOTAL CFM		COOLING CAPACITY		EER (SEER)		GAS HEAT CAPACITY		AFUE%		EVAP. COIL		EVAPORATOR FAN MOTOR
		SENSIBLE TOTAL		INPUT OUTPUT		INPUT OUTPUT		SIZE ROWS		SIZE ROWS		
2,000		43.9 MBH 58.5 MBH		11.0 (14.0)		67 MBH 54 MBH		81		11.1 SQ.FT.		4 2.4 HP

NOTES:

- INCLUDES FAN AND MOTOR HEAT.
- CONTRACTOR SHALL PROVIDE HONEYWELL VISION PRO 8000 MODEL TH8321WF1001 PROGRAMMABLE THERMOSTAT AND REMOTE SENSOR MODEL TR-21.
- BLOWER FAN MAINTAINS CONTINUOUS OPERATION DURING OCCUPIED HOURS.
- INCLUDES FACTORY INSTALLED LOW LEAK ECONOMIZER FACTORY INSTALLED OPTION FAULT DETECTION & DIAGNOSTICS (FDD) WITH BAROMETRIC RELIEF.
- PROVIDE 14" HIGH ROOF CURB.
- UNIT EQUIPPED WITH MULTI-SPEED AIR VOLUME BLOWER. BOTH THE LOW SPEED MINIMUM POSITION AND THE HIGH SPEED MINIMUM POSITION SETTING SHALL BE BALANCED TO CFM SPECIFIED.
- INCLUDES NON-POWER CONVENIENCE OUTLET AND DISCONNECT.
- PROVIDE UNIT WITH HUMIDIFIER/HOT GAS REHEAT AND RETURN DUCT MOUNTED HUMIDITY SENSOR.

DUCT CONSTRUCTION SCHEDULE

DUCT SYSTEM	MATERIAL	PRESSURE CLASS W.C.	SEAL CLASS	INSULATION
LOW PRESSURE SUPPLY	STEEL	2"	A	* TYPICAL - 3" DUCT WRAP, R-8 INSULATION
RETURN/TRANSFER DUCTS	STEEL	2"	A	1" DUCT LINER, 10' 0" FROM THE UNIT ONLY FOR RETURN
GENERAL EXHAUST	STEEL	2"	A	(NOT REQUIRED)
EXTERIOR DUCTWORK	STEEL/ALUM	4"	A	SEE DETAIL

- GENERAL DUCTWORK NOTES:**
- All rectangular ducts shall be "Pittsburgh Lock" longitudinal joints. Snaplock is not acceptable.
 - All round ducts and flat oval ducts shall have spiral seams or continuously welded longitudinal seams.
 - All transverse joints in rectangular ductwork 48" and larger shall be Ductmate, SMACNA T-25, or approved equivalent. All flanged ductwork, regardless of pressure class, shall use gaskets, corner closures, and be TEK screwed or riveted on 10" centers with a minimum of two (2) per side.
 - Transverse joints in rectangular ductwork smaller than 48" shall be made in accordance with SMACNA suitable with the pressure class.
 - All transverse joints in round and oval ductwork 24" and larger shall be Ductmate, or approved equivalent. Transverse joints in round and oval ductwork smaller than 24" shall be beaded sleeve joints.
- ALL DUCTWORK DIMENSIONS INDICATED ON THE PLANS ARE CLEAR, INSIDE DIMENSIONS. CONTRACTOR SHALL INCREASE SHEETMETAL SIZE AS REQUIRED TO ACCOMMODATE DUCT LINER.



VERSION: QUARTER 4 - 2023





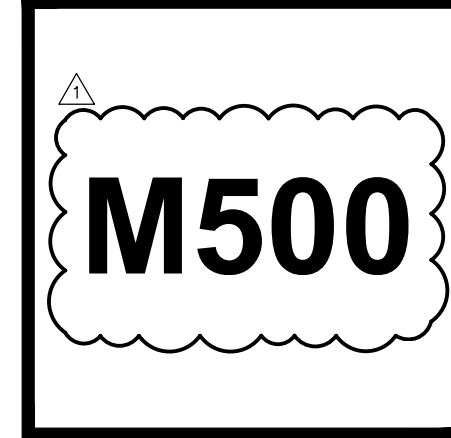
1917 5TH ST.
EUREKA, CA 95501
A.P.N 002-105-018

HOOD DRAWINGS

Project Number: _____
Plan Check Number: _____

01/01/2024	6815900	VERSION 2023.04
09/24/2024	_____	OWNER REVISION

DATE: 6/3/2024
DWG.#: 6815900
DRAWN BY: AH-83
SCALE: 3/4" = 1'-0"
MASTER DRAWING



M500

REVISIONS

NO.	DESCRIPTION	DATE

CAPTIVE
Southern CA National Accounts
www.captiveusa.com
3022 Dow Ave., Suite 202, Torrance, CA 90780 Phone: (714) 977-2900 Email: rugg@captivemex.com

Habit - Eureka, CA
EUREKA, CA, 95501

DATE: 6/3/2024
DWG.#: 6815900
DRAWN BY: AH-83
SCALE: 3/4" = 1'-0"
MASTER DRAWING

SHEET NO. 1

FOR QUESTIONS, CALL THE Southern CA National Accounts REGION 03 PHONE: (714) 677-2963 EMAIL: rugg@captivemex.com

PATENT NUMBERS
AC-PSP (UNITED STATES) - US PATENT 7961030 B2
AC-PSP WALL (CANADA) - CA PATENT 2880050
AC-PSP ISLAND (CANADA) - CA PATENT 2500030

HOOD INFORMATION - JOB#6815900

HOOD NO.	TAG	MODEL	MANUFACTURER	LENGTH	MIN. COOKING TEMP.	TYPE	APPL. RANGE DUTY	DESIGN CFM/FT	TOTAL EXH. CFM	EXHAUST PLENUM (SERIES)	WIDTH	LENG.	HEIGHT	DIA.	CFM	VEL.	SP.	TOTAL SUPPLY CFM	HOOD CONSTRUCTION	HOOD END TO END	HOOD ROW
1		5430 NS-2-PSP-F	CAPTIVEAIRE	13' 3"	600 DEG	I	HEAVY	272	3600		4"	14"	1800	1684	-110"	0	430 SS WHERE EXPOSED	430 SS	ALONE	ALONE	
2		5430 NS-2W1	CAPTIVEAIRE	5' 0"	600 DEG	I	HEAVY	250	1750		4"	14"	1750	1637	-1213"	0	430 SS WHERE EXPOSED	430 SS	ALONE	ALONE	
3		156 MISC-PSP	CAPTIVEAIRE	5' 1"	300 DEG	N/A	N/A	0	0									430 SS WHERE EXPOSED	430 SS	ALONE	ALONE
4		156 MISC-PSP	CAPTIVEAIRE	3' 6"	300 DEG	N/A	N/A	0	0									430 SS WHERE EXPOSED	430 SS	ALONE	ALONE

HOOD INFORMATION

HOOD NO.	TAG	FILTERS				LIGHTS				UTILITY CABINETS				FIRE SYSTEM PIPING	HOOD HANGING WEIGHT		
		TYPE	QTY	HEIGHT	LENGTH	EFFICIENCY @ 7 MICRONS	QTY	TYPE	WIRE GUARD	LOCATION	SIZE	FIRE SYSTEM TYPE	SIZE			ELECTRICAL MODEL #	SWITCHES QUANTITY
1		CAPTRATE COMBO WITH	10	20"	16"	99% SEE FILTER SPEC	4	L55 SERIES E26	NO	LEFT	12"x24"x24"	TANK FS	4.0/4.0	DCV-3011	1 LIGHT 1 FAN	YES	1339 LBS
2		CAPTRATE COMBO WITH	3	20"	16"	99% SEE FILTER SPEC	2	L55 SERIES E26	NO							YES	358 LBS
3							0									NO	55 LBS
4							0									NO	59 LBS

HOOD OPTIONS

HOOD NO.	TAG	OPTION
1		FIELD WRAPPER 400" HIGH FRONT, LEFT, RIGHT. RIGHT END STANDOFF (FINISHED) 1" WIDE 54" LONG INSULATED. LEFT QUARTER END PANEL 23" TOP WIDTH, 0" BOTTOM WIDTH, 25" HIGH 430 SS. INSULATION FOR TOP OF HOOD. STRUCTURAL FRONT PANEL. INSULATION FOR BACK OF HOOD. 1-PINT GREASE CUP.
2		FIELD WRAPPER 400" HIGH FRONT, LEFT, RIGHT. LEFT END STANDOFF (FINISHED) 1" WIDE 54" LONG INSULATED. INSULATION FOR TOP OF HOOD. FINISHED BACK ISL/REV INSTALL 6200" LONG, FILTERS TO THE BACK. 1-PINT GREASE CUP.
3		FIELD WRAPPER 400" HIGH LEFT, RIGHT, BACK.
4		FIELD WRAPPER 400" HIGH FRONT, LEFT, RIGHT.

PERFORATED SUPPLY PLENUMS

HOOD NO.	TAG	POS.	LENGTH	WIDTH	HEIGHT	TYPE	WIDTH	LENG.	DIA.	CFM	SP.
1		Front	172"	16"	6"	MUA	12"	28"	725	0.198"	
						MUA	12"	28"	725	0.198"	
						MUA	12"	28"	725	0.198"	
3		Front	61"	16"	6"	MUA	12"	28"	700	0.191"	
4		Front	48"	16"	6"	MUA	12"	28"	700	0.191"	

WALL-MOUNT UTILITY CABINET

HOOD NO.	LOCATION	SIZE	FIRE SYSTEM		ELECTRICAL MODEL #	SWITCHES QUANTITY	WEIGHT
			TYPE	SIZE			
1	WALL MNT	12"x24"x24"	TANK FS	4.0/4.0			300.00 LBS

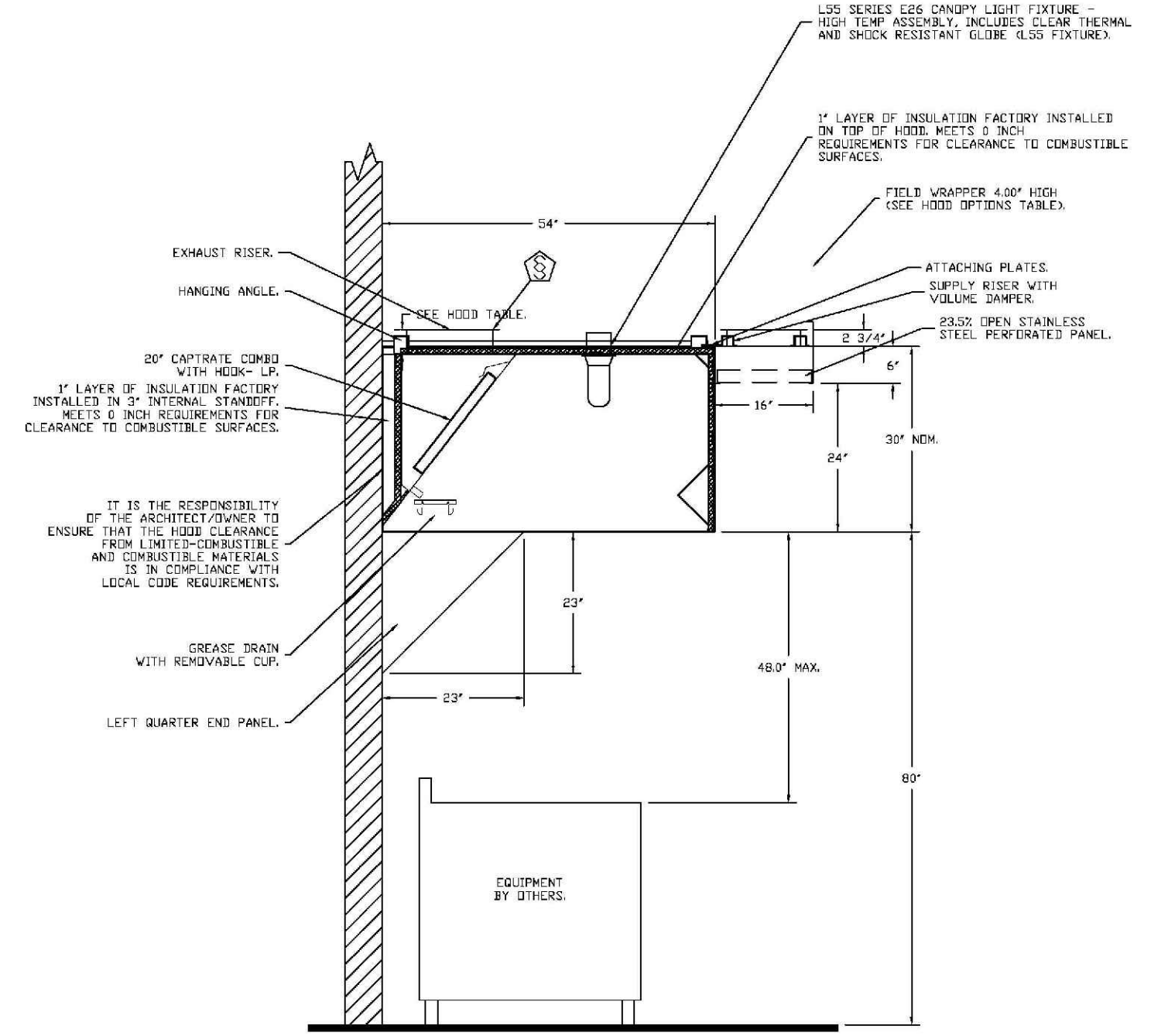
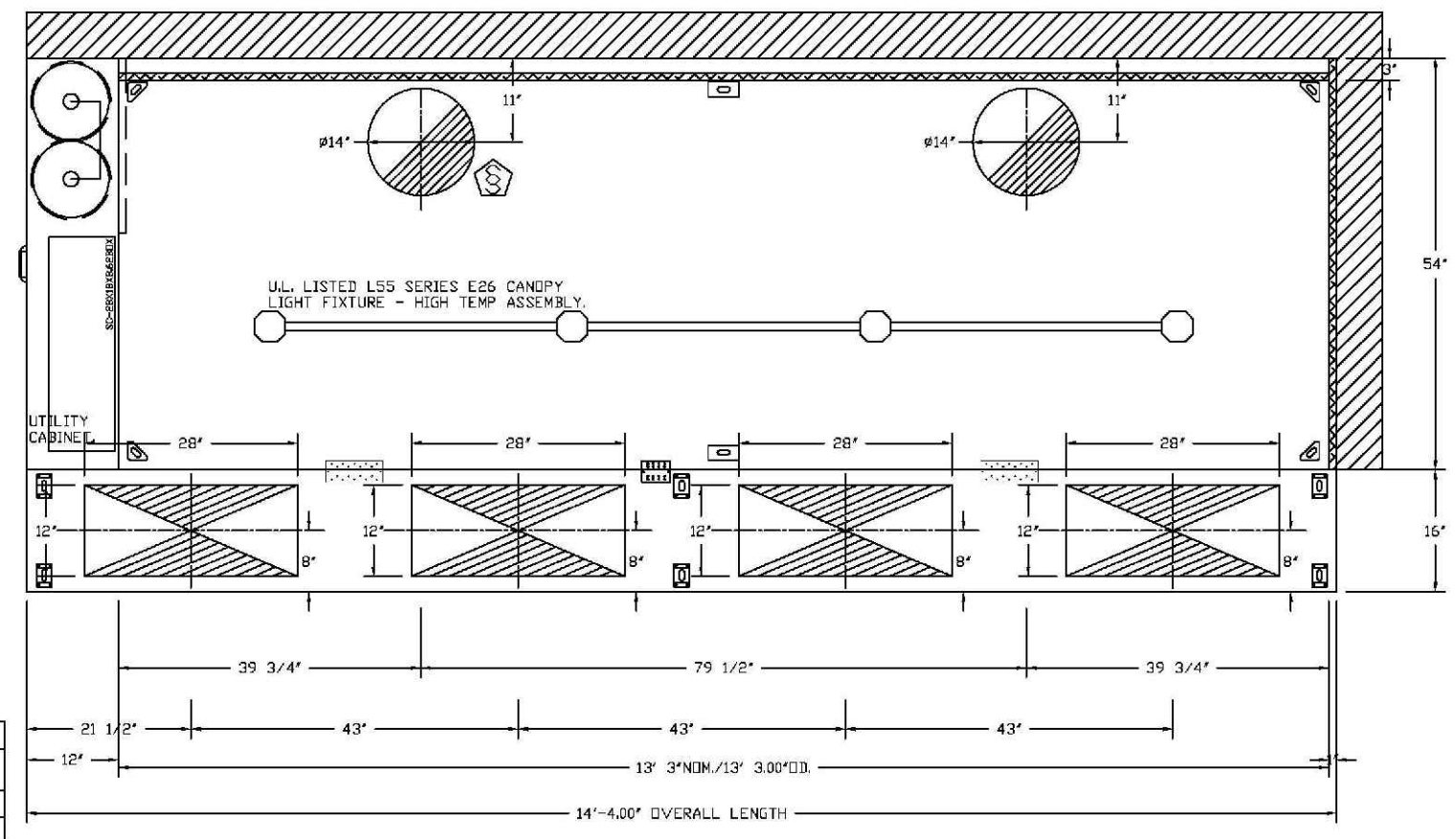
FIRE SYSTEM INFORMATION - JOB#6815900

FIRE SYSTEM NO.	TAG	TYPE	SIZE	MAX FP	DESIGN FP	INSTALLATION	
						SYSTEM	LOCATION ON HOOD
1		TANK FS	4.0/4.0	48	66	FIRE CABINET LEFT	LEFT, HOOD 1
			4.0/4.0	48	66	WALL UTILITY CABINET LEFT	N/A

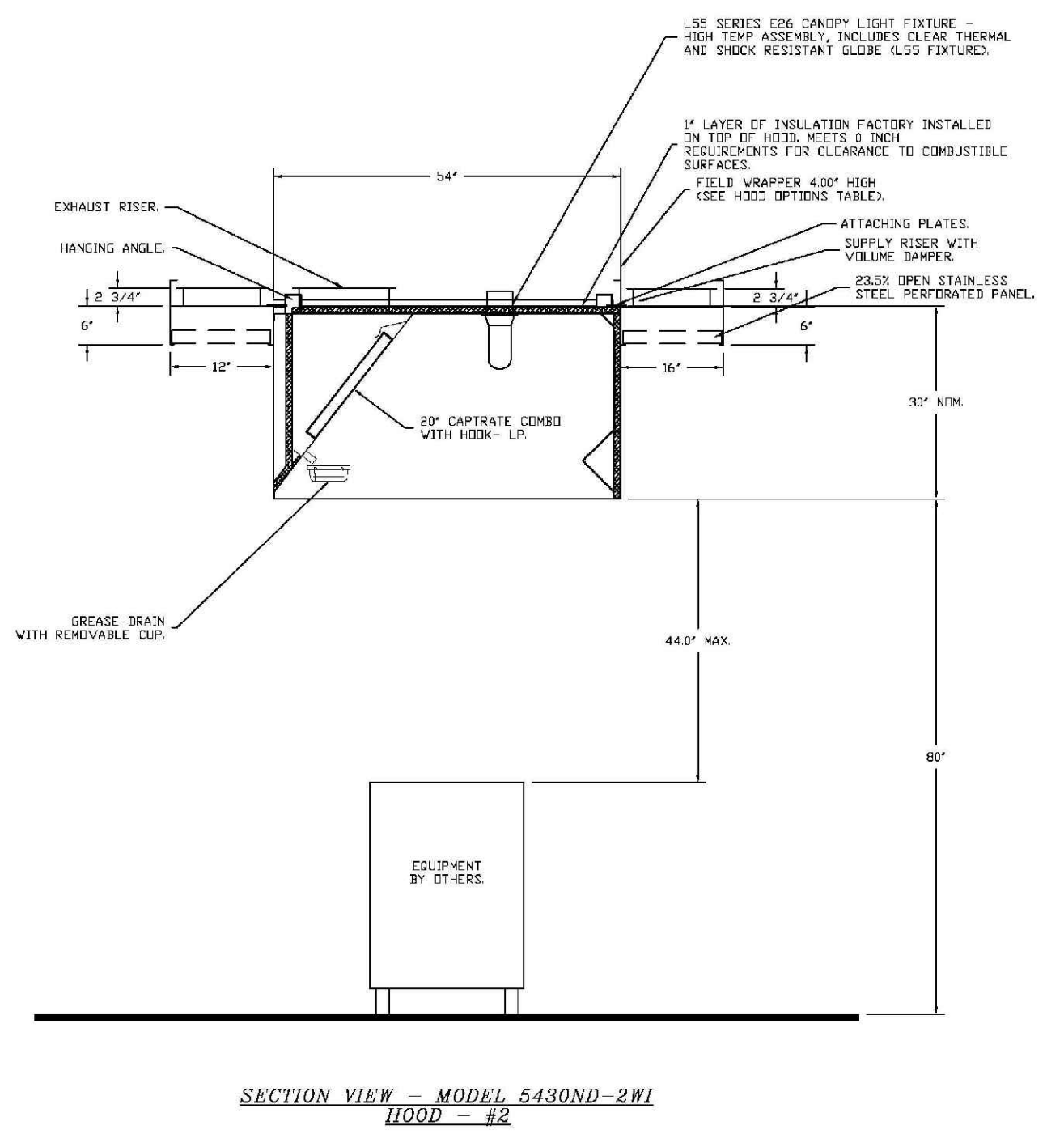
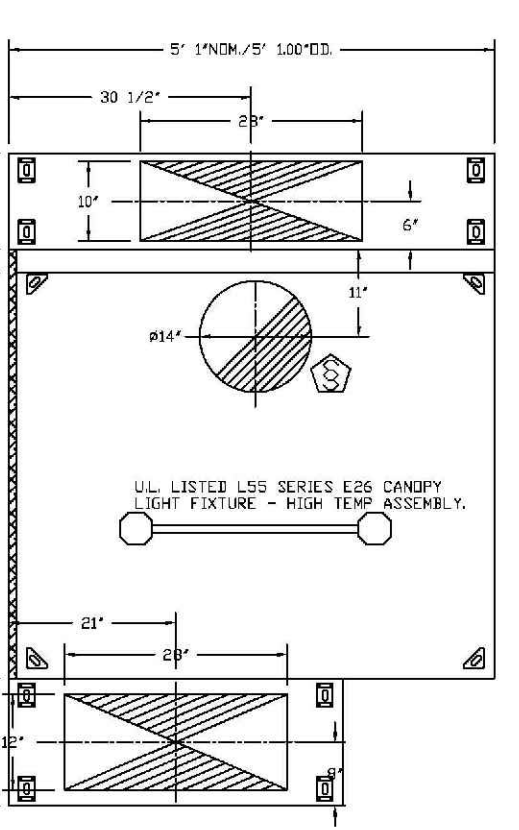
CLEARANCE TO COMBUSTIBLES

HOODS #	SURFACE	CLEARANCE
1	TOP	0"
	FRONT	0"
	BACK	0"
	LEFT	0"
2	RIGHT	0"
	TOP	0"
	FRONT	0"
	BACK	0"
3,4	LEFT	18"
	RIGHT	18"
	TOP	18"
	FRONT	18"
	LEFT	18"
	RIGHT	18"

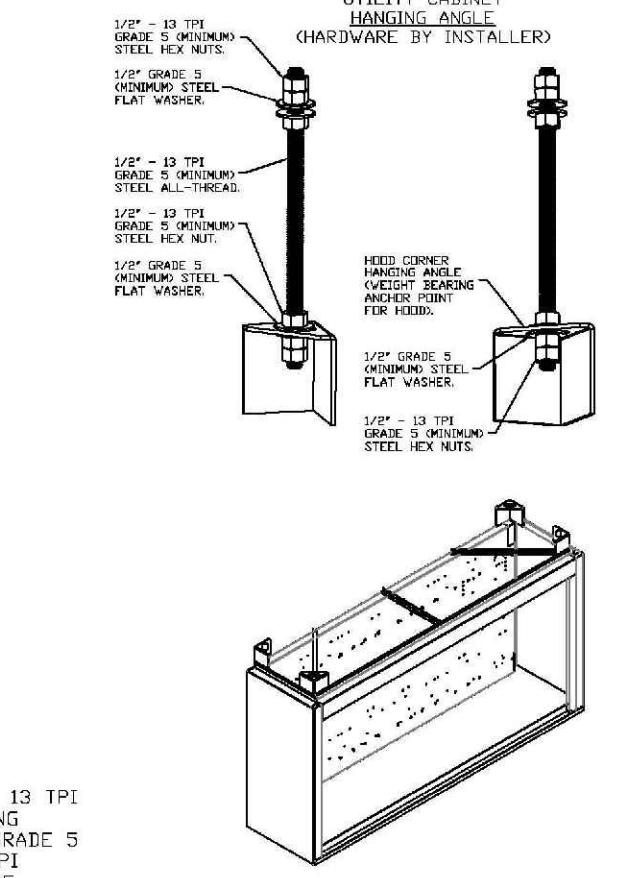
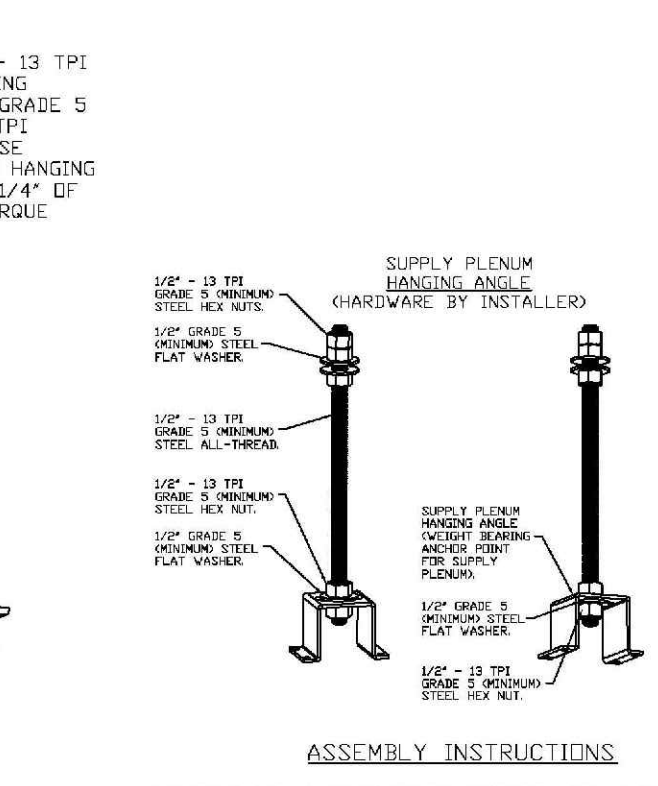
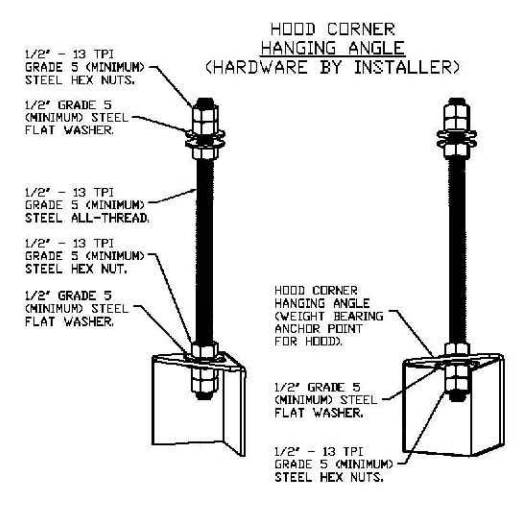
- 18" CLEARANCE TO COMBUSTIBLES CONFORMS TO UL710 STANDARD.
- HOOD MOUNTED UTILITY CABINETS REQUIRE 36" SERVICE CLEARANCE.



PLAN VIEW - HOOD #3

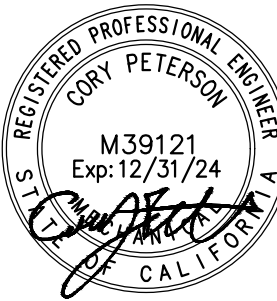


PLAN VIEW - HOOD #4



- REVIEWED -
EUREKA BUILDING DEPARTMENT
531 "K" STREET 441-4155
This plan check shall not be construed to be a permit for, or an approval of, any violation of the provisions of the Eureka Building Code.
Reviewed by: BR Date: 10/9/24
Permit #: B-24-384





1917 5TH ST.
EUREKA, CA 95501
A.P.N 002-105-018

HOOD DRAWINGS

Project Number: _____
Plan Check Number: _____

01/31/2024	VERSION 2023.04
09/24/2024	OWNER REVISION



BELDEN
CONSULTING ENGINEERS
4457 Willow Road, Suite 100
Pleasanton, California 94588
phone: (925) 621-5300 fax: (925) 203-5758
belden@beldeninc.com
24013/NS

REVISIONS

NO.	DESCRIPTION	DATE

CAPTIVE
Southern CA National Accounts
www.captiveair.com
3822 Day Ave. Suite 202, Tustin, CA 92780 PHONE: (714) 977-2885 EMAIL: capt@captivair.com

Habit - Eureka, CA
EUREKA, CA, 95501

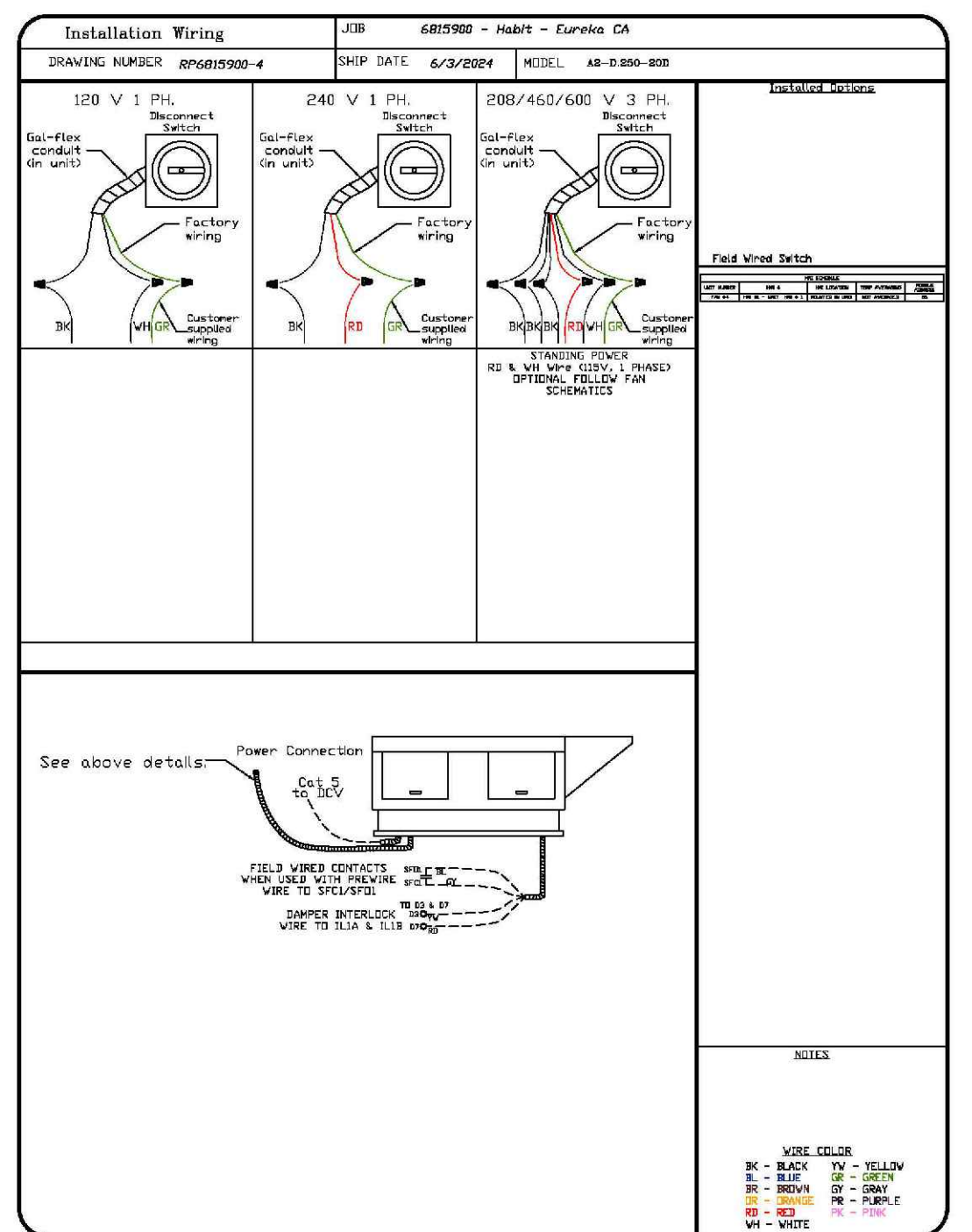
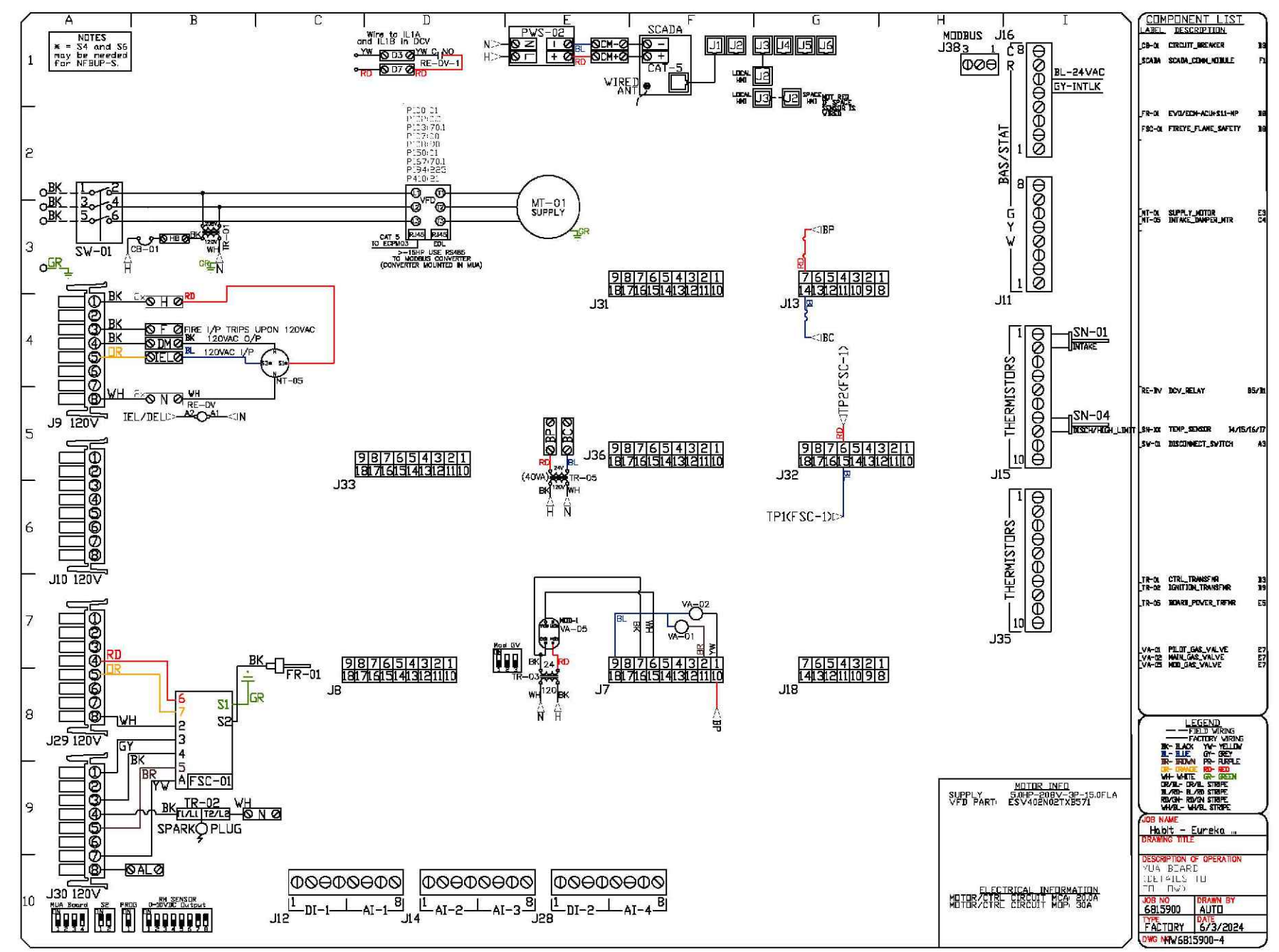
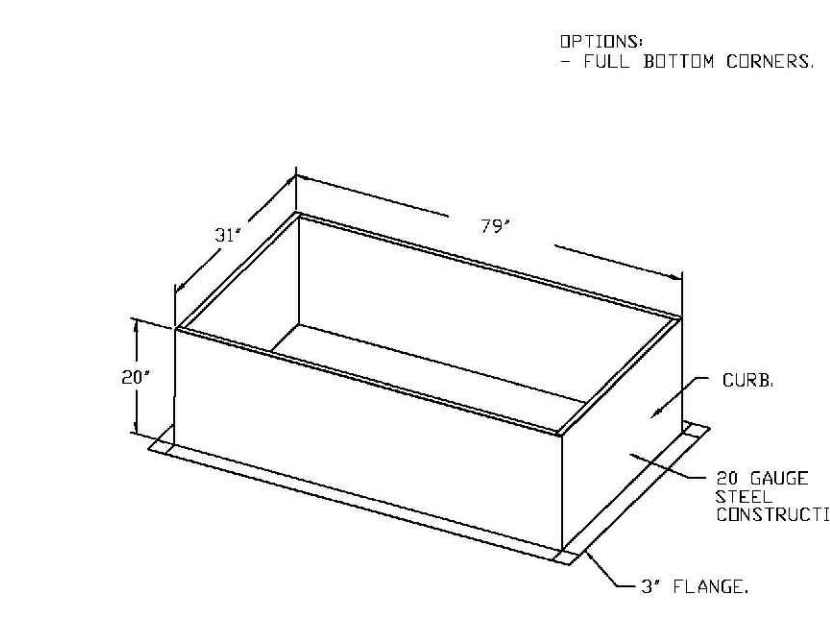
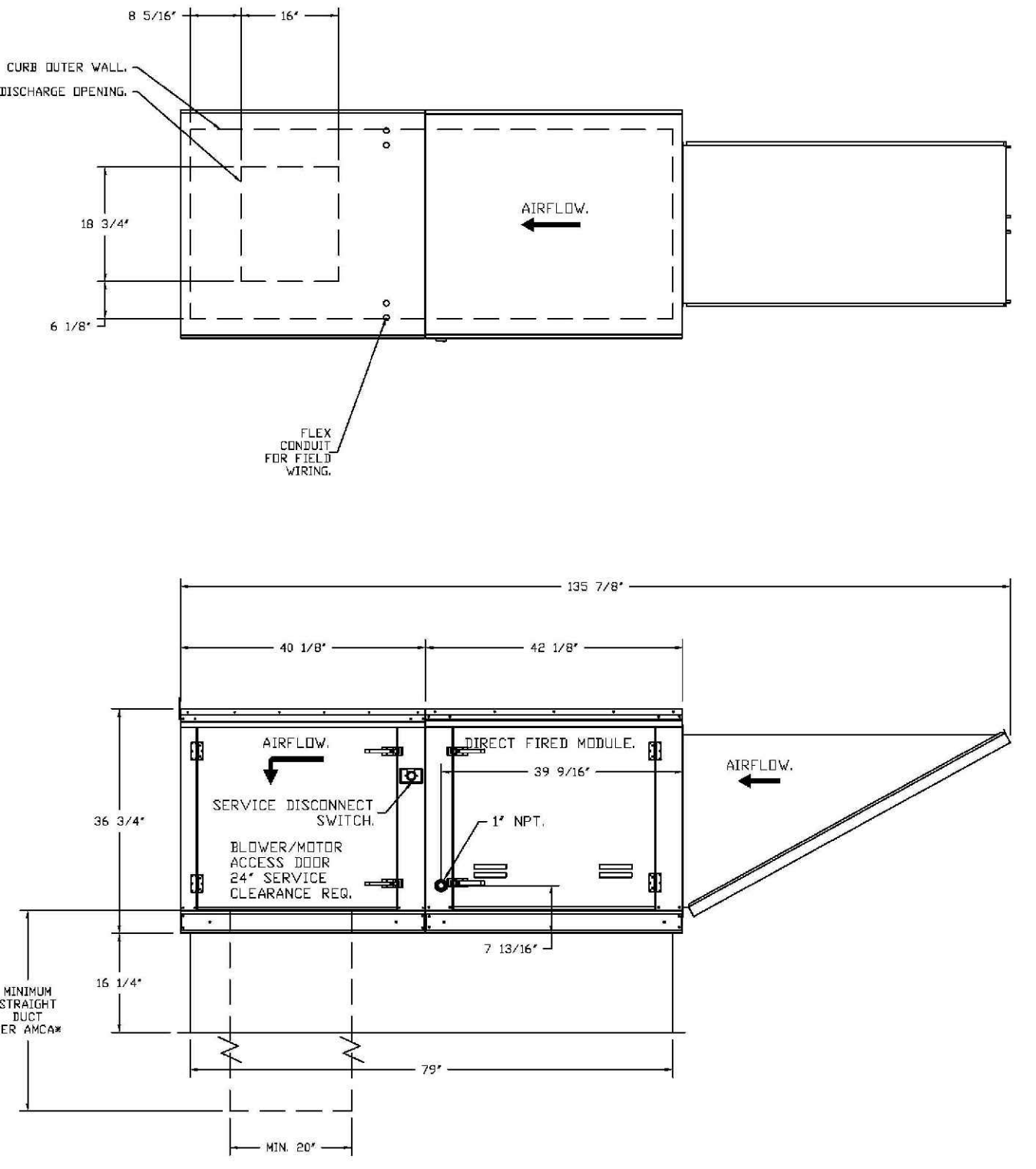
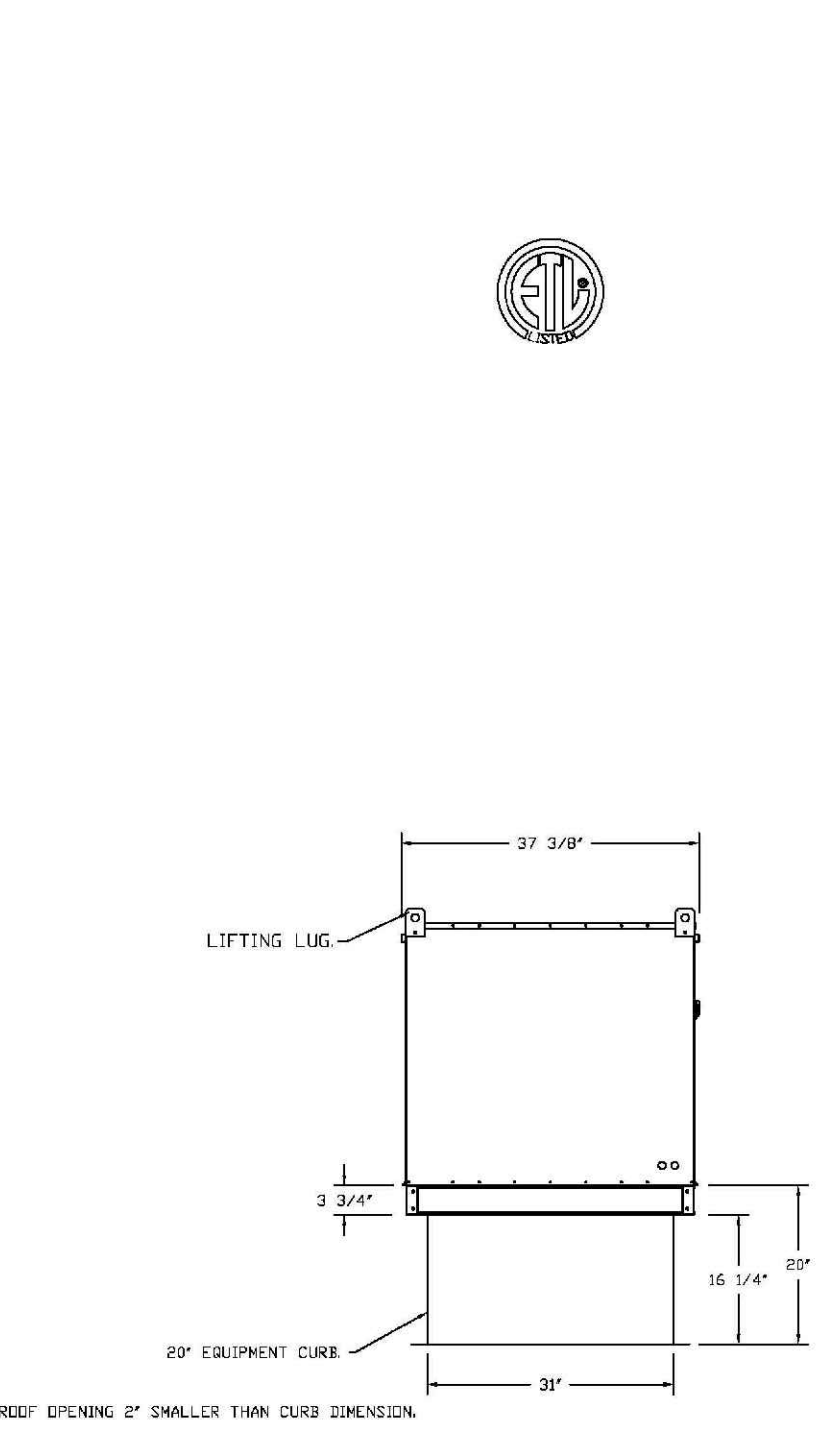
DATE: 6/3/2024
DWG.#: 6815900
DRAWN BY: AH-B3
SCALE: 3/4" = 1'-0"
MASTER DRAWING

SHEET NO. 3

- FAN #4 62-2250-202 - HEATER
1. DIRECT GAS FIRED HEATED MAKE UP AIR UNIT WITH 80" MIXED FLOW DIRECT DRIVE FAN
 2. INRAK MED WITH 12 FILTERS
 3. DRON DISCHARGE - AIR FLOW RIGHT -> LEFT
 4. DRON DISCHARGE CONSTRUCTION FOR SIZE 2 DIRECT DRIVE AUGUS
 5. GAS PRESSURE RANGE: 0.25" TO 2.5" INCHES; 1/4" THREAD SIZE
 6. GAS PRESSURE RANGE: 0.25" TO 2.5" INCHES; 1/4" THREAD SIZE
 7. INTERLOCK VALVE OPTION FOR MED SIZE 2 1/2" MED VALVE
 8. SHIP LOGEL GAS STRAINER TO BE INSTALLED UPSTREAM OF UNIT CONNECTION
 9. GASLINE BUILDING MONITORING SYSTEM CONNECTIONS INCLUDE: SHUTTER, 1/2" FLEX VALVE STRIKE CONNECTION IN 24 CELLULAR SERVICE. INCLUDES REV 3 COMM MODULE, 8 GAS TO MODBUS CONVERTER, 2 FT CAT5 CABLE, AND 1 FT OF SERVICE SYSTEM PAPER
 10. NOTIFIED BACK SHAF DAMPER 20.25" X 24" FOR SIZE 2 STANDARD & MODULAR HEATER UNITS W/EXTENDED SHAF, STANDARD GALVANNEED CONSTRUCTION, 24" X 24" FLANGE, LOW LEAKAGE, 1/2" ISO ACTUATOR INCLUDES
 11. UNIT MOUNTED VFD FOR USE WITH EXPLOS
 12. SINGEL DIESEL WALL, INSULATED STEEL ASSEMBLY CRUISER/BLOWER SECTION
 13. 2 YEAR PARTS WARRANTY

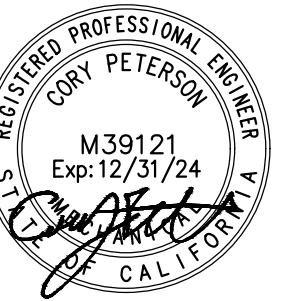
SUPPLY SIDE HEATER INFORMATION

WINTER TEMPERATURE = 27°F, TEMP. RISE = 48°F.
 FLEX CALCULATED BY ACTUAL AIR DENSITY
 OUTPUT BTU/H AT ALTITUDE OF 20 FT = 220000
 INPUT BTU/H AT ALTITUDE OF 20 FT = 220000
 OUTPUT BTU/H AT ALTITUDE OF 19 FT = 220000
 INPUT BTU/H AT ALTITUDE OF 19 FT = 220000



- REVIEWED -
EUREKA BUILDING DEPARTMENT
531 "K" STREET 441-4155
This plan check shall not be construed to be a permit for, or an approval of, any violation of the provisions of the Eureka Building Code
Reviewed by: BR Date: 10/9/24
Permit #: B-24-384

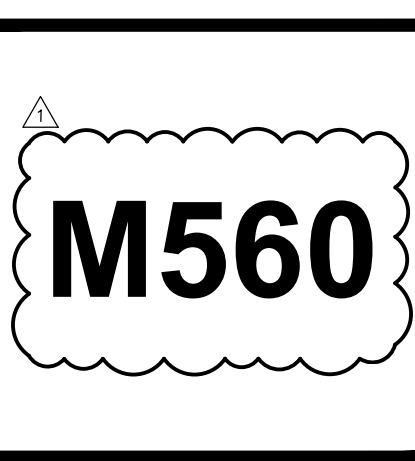
RECEIVED
10/02/2024
EUREKA BUILDING DEPARTMENT



1917 5TH ST.
EUREKA, CA 95501
A.P.N 002-105-018

HOOD DRAWINGS

Project Number:	
Plan Check Number:	
01/31/2024	VERSION 2023.04
09/24/2024	OWNER REVISION



CAPTIVE
 San Joaquin Co. Air Pollution Control District
 3002 Deer Ave., Suite 202, Turlock, CA 95290 PHONE: (714) 977-3900 EMAIL: info@captivaire.com

Habit - Eureka, CA
 Eureka, CA, 95501

DATE: 6/3/2024
 DRAWN BY: 6815900
 CHECKED BY: AH-83
 SCALE: 3/4" = 1'-0"
 DWG. NUMBER:

SHEET NO.
 7

DUCTWORK #2 PARTS - JOB#6815900 DOUBLE WALL

TAG	PART #	CFM	GPM	ZONE	COVERED BY	SP	WEIGHT	VELOCITY	QTY	DESCRIPTION
H2-E1	DV18DWRISER-2R-S	1750				-1.213	815	0.00	1	DOUBLE WALL RISER COVER - USED ON 14" INNER RISER, 4" LONG - 2 LAYERS REDUCED CLEARANCE - 18" STAINLESS STEEL OUTER RISER SHELL ASSEMBLY. INCLUDES INSULATION & SINGLE V CLAMPS FOR INNER & OUTER CONNECTIONS.
P1	DV1427DVAJD-2R-S	1750				-0.007	52.12	1637.02	1	DOUBLE WALL ADJUSTABLE DUCT - 14" INNER DUCT - 2 LAYERS REDUCED CLEARANCE - 18" STAINLESS STEEL OUTER SHELL. MIN LENGTH = 11' / MAX LENGTH = 24.5' / ADJUSTMENT = 12.5' / ADJUSTABLE SECTION MAY NEED TO BE CUT. INCLUDES SINGLE AND DOUBLE WALL "V" CLAMPS.
P2	DV1430DVASY-2R-S	1750				-0.03	16.79	1637.02	1	DOUBLE WALL DUCT - 14" INNER 30 DUCT - 2 LAYERS REDUCED CLEARANCE - 18" STAINLESS STEEL OUTER SHELL.
P3	DV1427DVAJD-2R-S	1750				-0.005	52.12	1637.02	1	DOUBLE WALL ADJUSTABLE DUCT - 14" INNER DUCT - 2 LAYERS REDUCED CLEARANCE - 18" STAINLESS STEEL OUTER SHELL. MIN LENGTH = 11' / MAX LENGTH = 24.5' / ADJUSTMENT = 12.5' / ADJUSTABLE SECTION MAY NEED TO BE CUT. INCLUDES SINGLE AND DOUBLE WALL "V" CLAMPS.
P4	DV1430DVASY-2R-S	1750				-0.05	16.79	1637.02	1	DOUBLE WALL DUCT - 14" INNER 30 DUCT - 2 LAYERS REDUCED CLEARANCE - 18" STAINLESS STEEL OUTER SHELL.
P5	DV1435DVLTP-2R-S	1750				-0.014	48.06	1637.02	1	DOUBLE WALL DUCT - 14" INNER DUCT, 35" LONG - 2 LAYERS REDUCED CLEARANCE - 18" STAINLESS STEEL OUTER SHELL - USED WITH TRANSITION PLATE.
P6	DV2614TPDBEX	1750					12.50	1637.02	1	DUCT TO CURB TRANSITION 3/4" DOWN TURN, 26-1/2" CURB TO 14" DUCT, 16 GA ALUMINIZED. FOR USE WITH EXHAUST FANS.
ASSEMBLED V/P6										
SYSTEM AT P6										
RC1	DV18DWRISER-2R-S						815		1	DOUBLE WALL RISER COVER - USED ON 14" INNER RISER, 4" LONG - 2 LAYERS REDUCED CLEARANCE - 18" STAINLESS STEEL OUTER RISER SHELL ASSEMBLY. INCLUDES INSULATION & SINGLE V CLAMPS FOR INNER & OUTER CONNECTIONS.
	3M-2000PLUS						0.80		2	DUCT - 3M FIRE BARRIER 2000 PLUS SILICONE - USED AS SEALANT TO SEAL DUCT JOINTS.
	DV14DCLASY-2R-S						7.21		1	DUCT - 14" DUCT - 18" DOUBLE "V" CLAMP - BR INSULATION & SINGLE "V" CLAMP INCLUDED - REDUCED CLEARANCE.
TOTAL WEIGHT							2823.47			

- SINGLE WALL FACTORY BUILT DUCTWORK**
- ALL DUCTWORK IS REQUIRED TO BE INSTALLED WITH THE MAXIMUM SUPPORT SPACING LISTED BELOW.
 - FOR A COMPLETE LIST OF APPROVED SUPPORT METHODS, SEE THE INSTALLATION AND OPERATION MANUAL.
 - DUCTWORK SHALL SLOPE NOT LESS THAN 1/16" PER LINEAR FOOT TOWARDS THE HOOD OR AN APPROVED GREASE COLLECTION RESERVOIR.
 - WHERE HORIZONTAL DUCTS EXCEED 75 FEET IN LENGTH, THE SLOPE SHALL NOT BE LESS THAN 3/16" PER LINEAR FOOT.

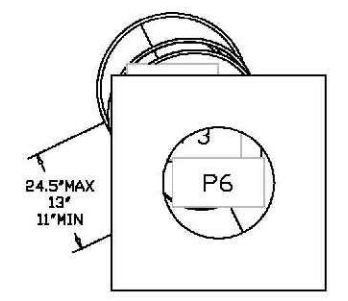
DUCT DIAMETER	HORIZONTAL SUPPORT (FT)	VERTICAL WALL SUPPORT (FT)	VERTICAL CURB SUPPORT (FT)
5"	10'	10'	24'
6"	10'	10'	24'
7"	10'	10'	24'
8"	10'	10'	24'
10"	10'	10'	24'
12"	10'	10'	24'
14"	10'	10'	24'
16"	10'	10'	24'
18"	10'	10'	24'
20"	10'	10'	24'
22"	10'	10'	24'
24"	10'	10'	24'
26"	10'	10'	24'
28"	10'	10'	24'
30"	10'	10'	24'
32"	10'	10'	24'
34"	10'	10'	24'
36"	10'	10'	24'

- DOUBLE WALL FACTORY BUILT DUCTWORK**
- ALL DUCTWORK IS REQUIRED TO BE INSTALLED WITH THE MAXIMUM SUPPORT SPACING LISTED BELOW.
 - FOR A COMPLETE LIST OF APPROVED SUPPORT METHODS, SEE THE ENTIRE INSTALLATION AND OPERATION MANUAL.
 - DUCTWORK SHALL SLOPE NOT LESS THAN 1/16" PER LINEAR FOOT TOWARDS THE HOOD OR AN APPROVED GREASE COLLECTION RESERVOIR.
 - WHERE HORIZONTAL DUCTS EXCEED 75 FEET IN LENGTH, THE SLOPE SHALL NOT BE LESS THAN 3/16" PER LINEAR FOOT.

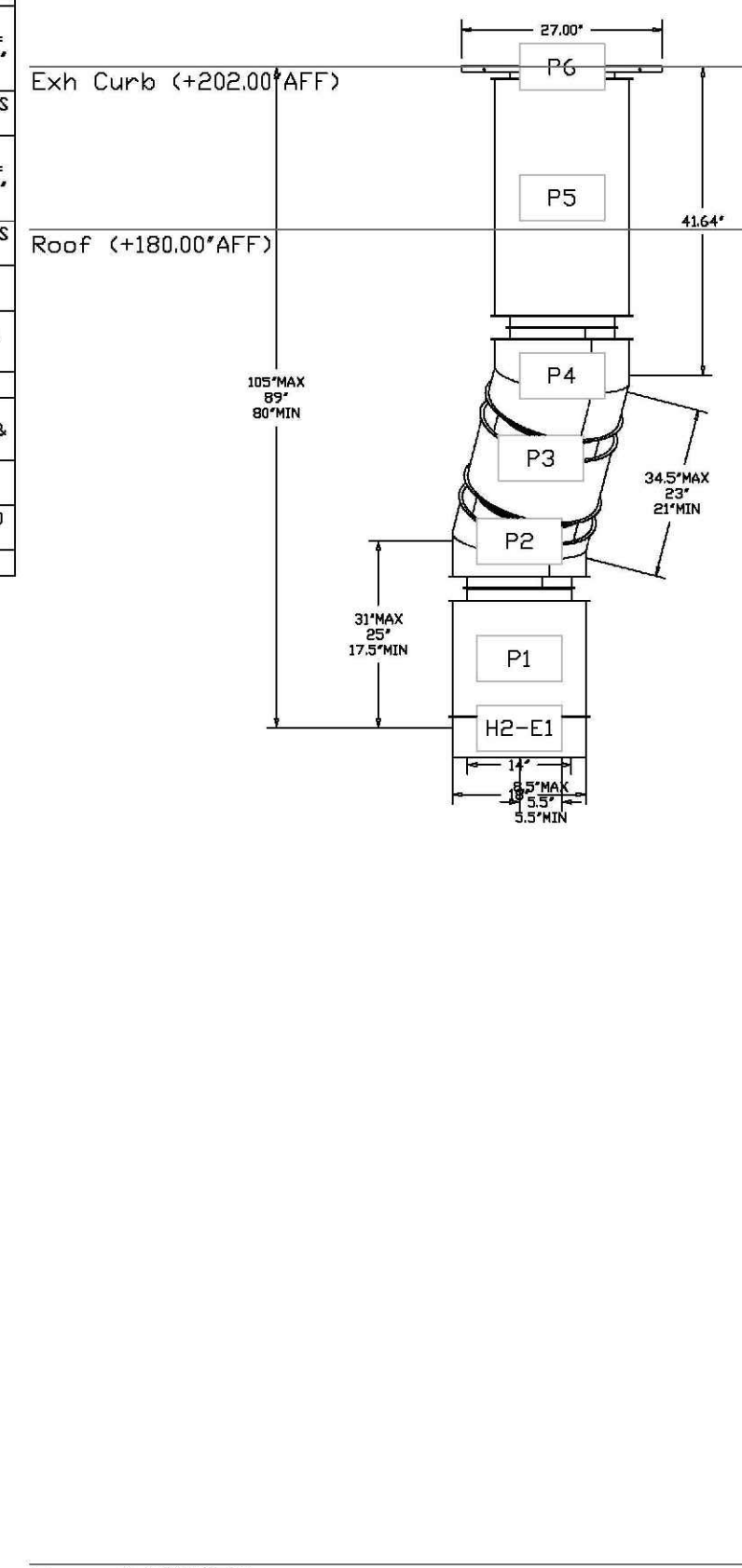
HORIZONTAL		VERTICAL			
DUCT DIAMETER	SUPPORT SPACING (FT)	TYPE	WALL SUPPORT (FT)	CURB SUPPORT (FT)	FLOOR SUPPORT (FT)
5"	7'	2R & 2R HT (5'-16")	20'	24'	24'
6"	7'	2R (18")	18'	24'	24'
7"	7'	3R & 3Z (5'-24")	10'	24'	24'
8"	7'	3Z (26'-36")	10'	20'	20'
10"	7'				
12"	7'				
14"	7'				
16"	7'				
18"	5'				
20"	5'				
22"	5'				
24"	5'				
26"	5'				
28"	5'				
30"	5'				
32"	5'				
34"	5'				
36"	5'				

DO NOT LEAK TEST USING SMOKE BOMBS CONTAINING CHLORINES/CHLORIDES. CONSULT WITH CAPTIVEAIRE FOR PROPER LEAK TESTING METHODS.

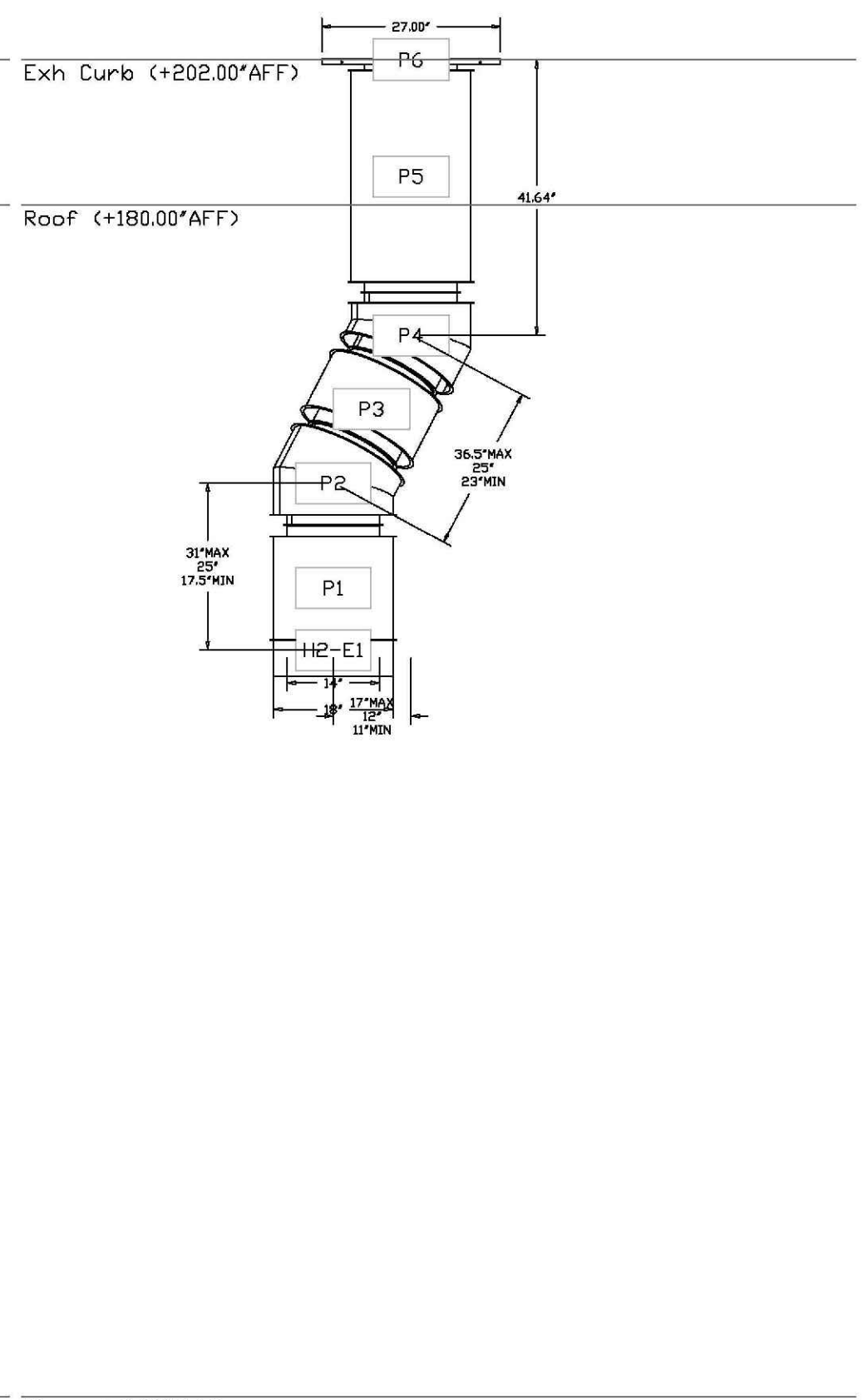
DUCTWORK #2 TOP VIEW



DUCTWORK #2 FRONT VIEW



DUCTWORK #2 SIDE VIEW



Floor (+0.00'AFF)

Floor (+0.00'AFF)

- REVIEWED -
EUREKA BUILDING DEPARTMENT
531 "K" STREET 441-4155
This plan check shall not be construed to be a permit for, or an approval of, any violation of the provisions of the Eureka Building Code
Reviewed by: BR Date: 10/9/24
Permit #: B-24-384



EUREKA BUILDING DEPARTMENT

