



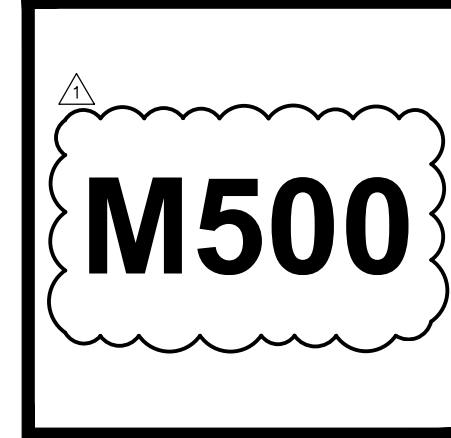
1917 5TH ST.
EUREKA, CA 95501
A.P.N 002-105-018

HOOD DRAWINGS

Project Number: _____
Plan Check Number: _____

01/01/2024	6815900	VERSION 2023.04
09/24/2024	_____	OWNER REVISION

DRAWN BY: AH-83
SCALE: 3/4" = 1'-0"
MASTER DRAWING



REVISIONS

NO.	DESCRIPTION	DATE

CAPTIVE
Southern CA National Accounts
www.captiveusa.com
3022 Dow Ave., Suite 202, Torrance, CA 90501 Phone: (714) 977-2900 Email: rugg@captivemex.com

Habit - Eureka, CA
EUREKA, CA, 95501

DATE: 6/3/2024
DWG.#: 6815900
DRAWN BY: AH-83
SCALE: 3/4" = 1'-0"
MASTER DRAWING

SHEET NO. 1

FOR QUESTIONS, CALL THE Southern CA National Accounts REGION 03 PHONE: (714) 677-2963 EMAIL: rugg@captivemex.com

PATENT NUMBERS
AC-PSP (UNITED STATES) - US PATENT 7961030 B2
AC-PSP WALL (CANADA) - CA PATENT 2880050
AC-PSP ISLAND (CANADA) - CA PATENT 2920030

HOOD INFORMATION - JOB#6815900

HOOD NO.	TAG	MODEL	MANUFACTURER	LENGTH	MIN COOKING TEMP.	TYPE	APPL. RANGE DUTY	DESIGN CFM/FT	TOTAL EXH. CFM	EXHAUST PLENUM (SIZES)	TOTAL SUPPLY CFM	HOOD CONSTRUCTION	HOOD END TO END	HOOD ROW
1		5430 NS-2-PSP-F	CAPTIVEAIRE	13' 3"	600 DEG	I	HEAVY	272	3600	4" x 14" 1800 1684 -1107	2900	430 SS WHERE EXPOSED	ALONE	ALONE
2		5430 NS-2W1	CAPTIVEAIRE	5' 0"	600 DEG	I	HEAVY	259	1750	4" x 14" 1750 1627 -1213*	0	430 SS WHERE EXPOSED	ALONE	ALONE
3		156 MISC-PSP	CAPTIVEAIRE	5' 1"	300 DEG	N/A	N/A	0	0		700	430 SS WHERE EXPOSED	ALONE	ALONE
4		156 MISC-PSP	CAPTIVEAIRE	3' 6"	300 DEG	N/A	N/A	0	0		700	430 SS WHERE EXPOSED	ALONE	ALONE

HOOD INFORMATION

HOOD NO.	TAG	TYPE	FILTERS	EFFICIENCY @ 7 MICRONS	QTY	TYPE	WIRE GUARD	LOCATION	SIZE	FIRE SYSTEM	ELECTRICAL	SWITCHES	FIRE SYSTEM PIPING	HOOD HANGING WEIGHT	
1		CAPTRATE COMBO WITH	10	20"	16"	99% SEE FILTER SPEC	4	L55 SERIES E26	NO	LEFT	12"x24"x24"	TANK FS	4.0/4.0	1 LIGHT 1 FAN	1339 LBS
2		CAPTRATE COMBO WITH	3	20"	16"	99% SEE FILTER SPEC	2	L55 SERIES E26	NO					358 LBS	
3														55 LBS	
4														59 LBS	

HOOD OPTIONS

HOOD NO.	TAG	OPTION
1		FIELD WRAPPER 400" HIGH FRONT, LEFT, RIGHT. RIGHT END STANDOFF (FINISHED) 1" WIDE 54" LONG INSULATED. LEFT QUARTER END PANEL 23" TOP WIDTH, 0" BOTTOM WIDTH, 23" HIGH 430 SS. INSULATION FOR TOP OF HOOD. STRUCTURAL FRONT PANEL. INSULATION FOR BACK OF HOOD. 1-PINT GREASE CUP.
2		FIELD WRAPPER 400" HIGH FRONT, LEFT, RIGHT. LEFT END STANDOFF (FINISHED) 1" WIDE 54" LONG INSULATED. INSULATION FOR TOP OF HOOD. FINISHED BACK ISL/REV INSTALL 6200" LONG, FILTERS TO THE BACK. 1-PINT GREASE CUP.
3		FIELD WRAPPER 400" HIGH LEFT, RIGHT, BACK.
4		FIELD WRAPPER 400" HIGH FRONT, LEFT, RIGHT.

PERFORATED SUPPLY PLENUMS

HOOD NO.	TAG	POS	LENGTH	WIDTH	HEIGHT	TYPE	WIDTH	LENG	DIA	CFM	SP
1		Front	172"	16"	6"	MUA	12"	28"	725	0.198"	
						MUA	12"	28"	725	0.198"	
						MUA	12"	28"	725	0.198"	
3		Front	61"	16"	6"	MUA	12"	28"	700	0.191"	
4		Front	42"	16"	6"	MUA	12"	28"	700	0.191"	

WALL-MOUNT UTILITY CABINET

HOOD NO.	LOCATION	SIZE	FIRE SYSTEM	ELECTRICAL	SWITCHES	WEIGHT
1	WALL MNT	12"x24"x24"	TANK FS	4.0/4.0		300.00 LBS

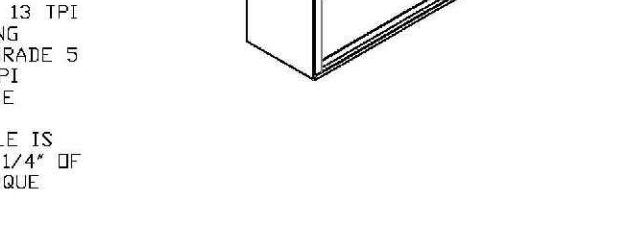
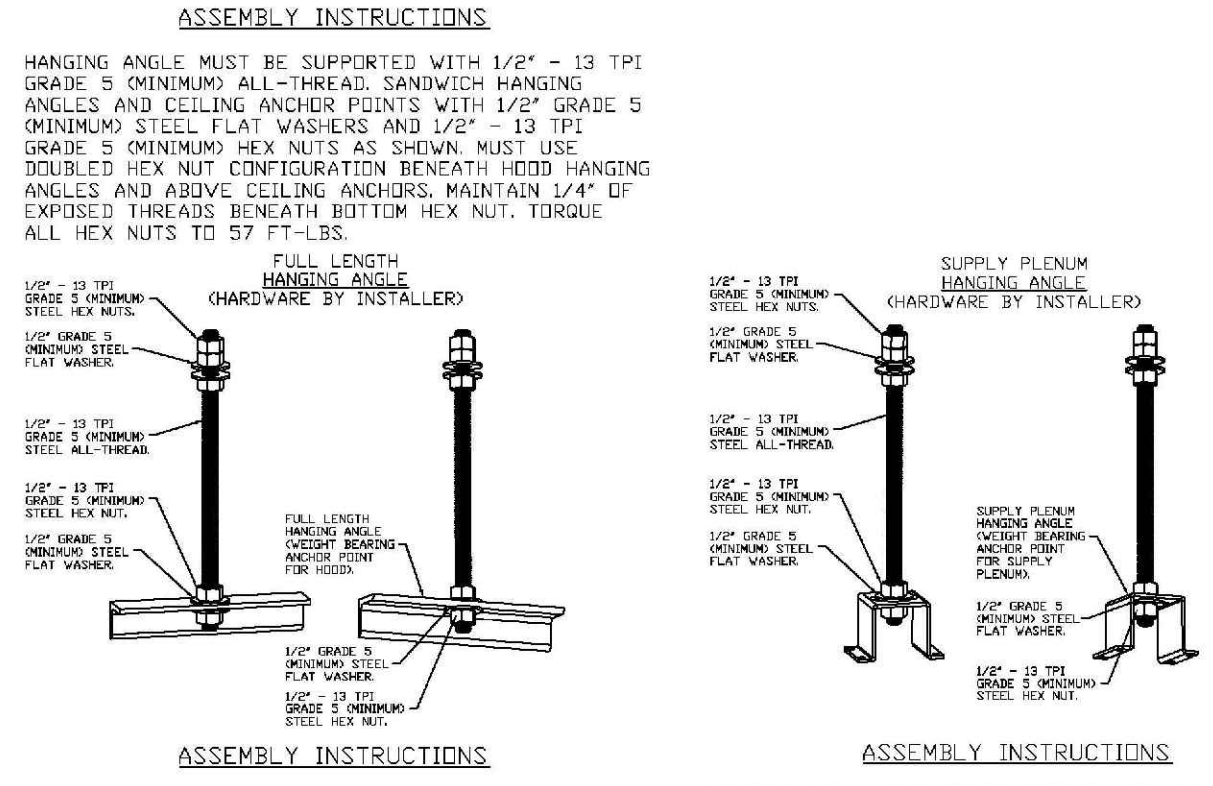
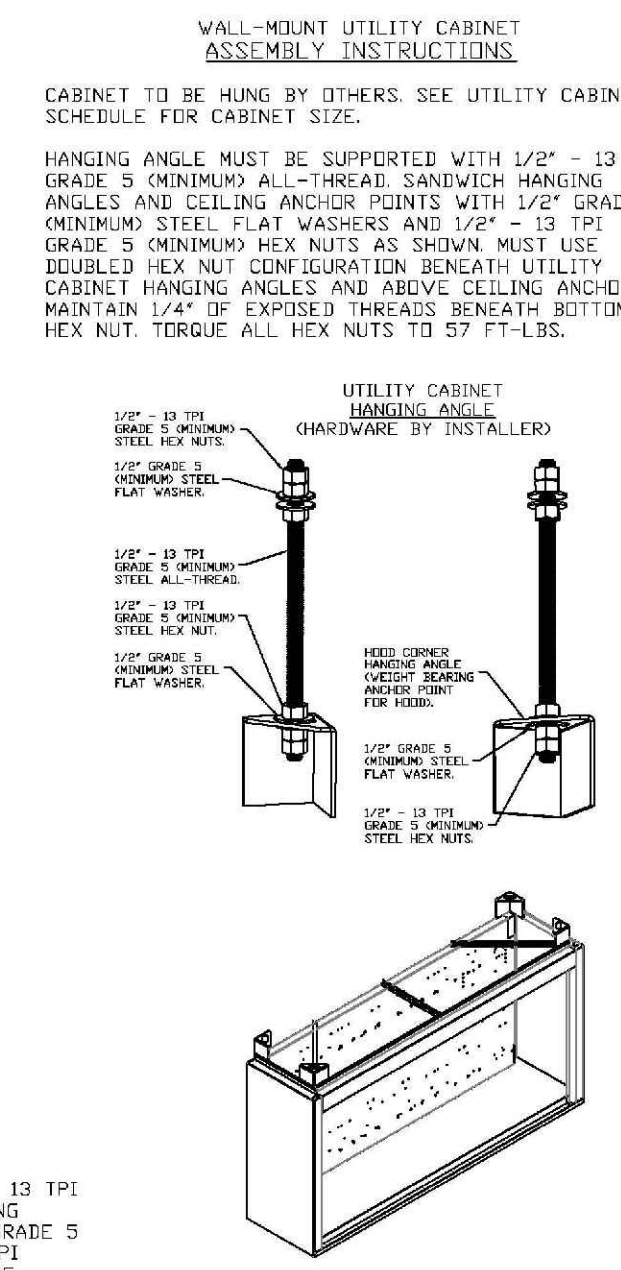
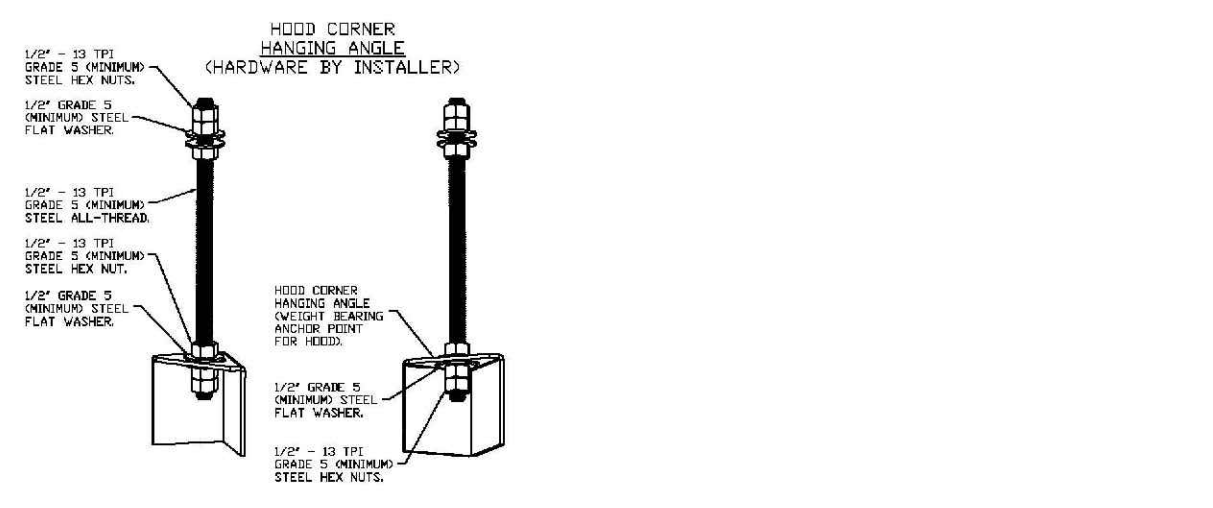
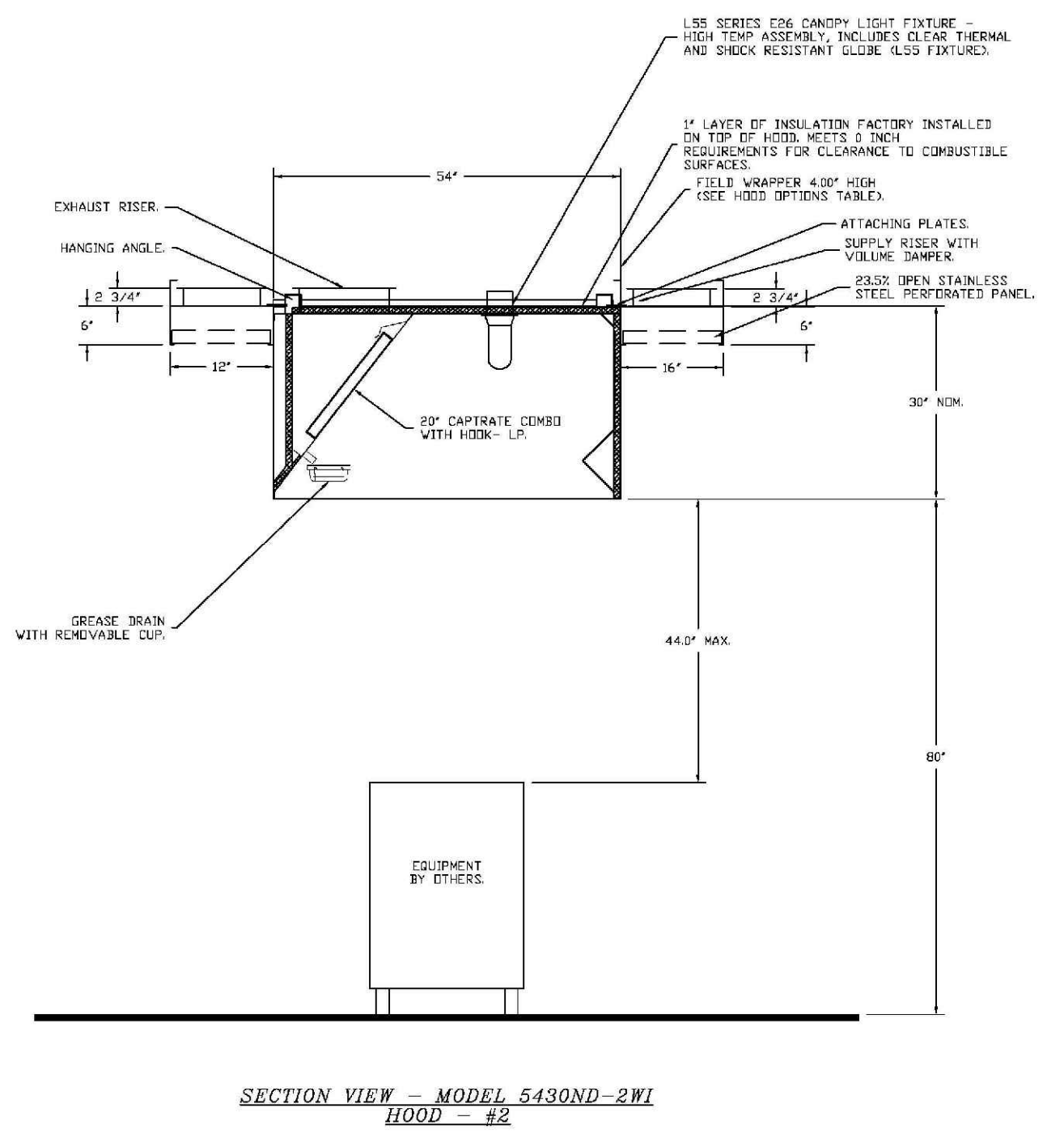
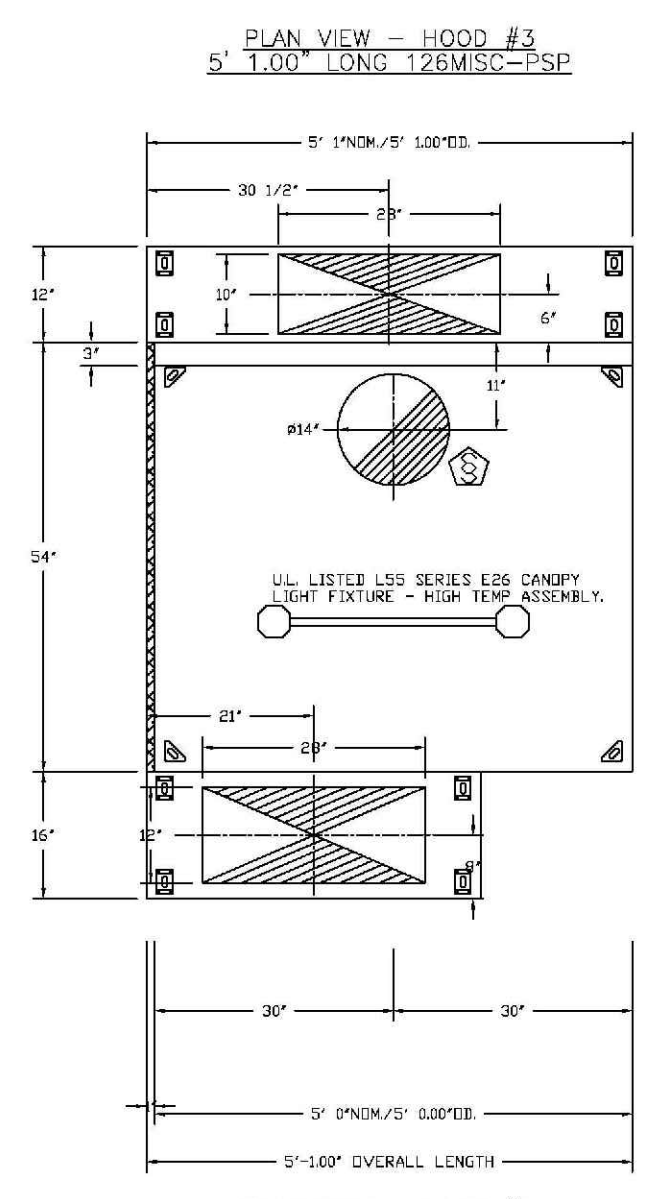
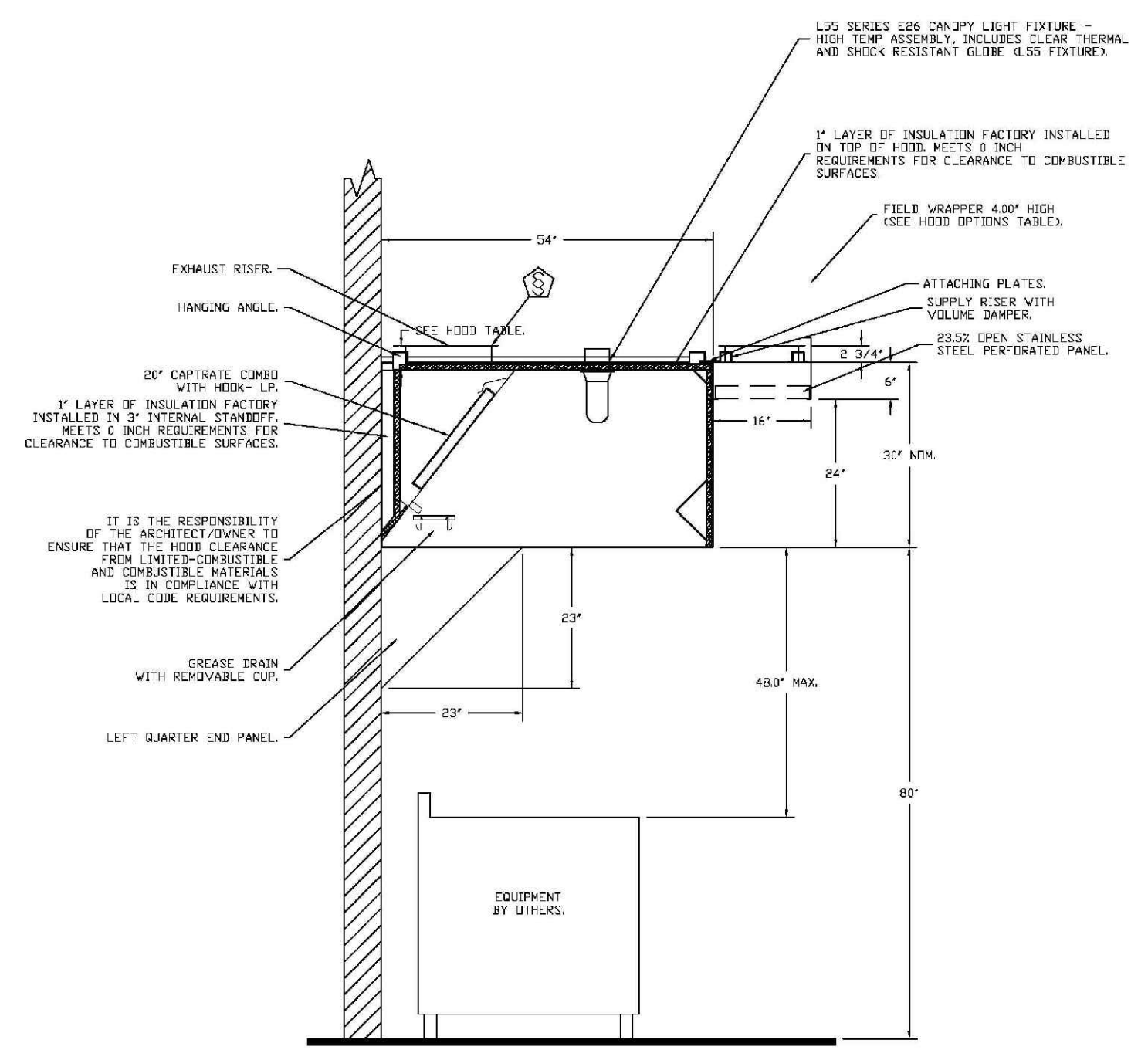
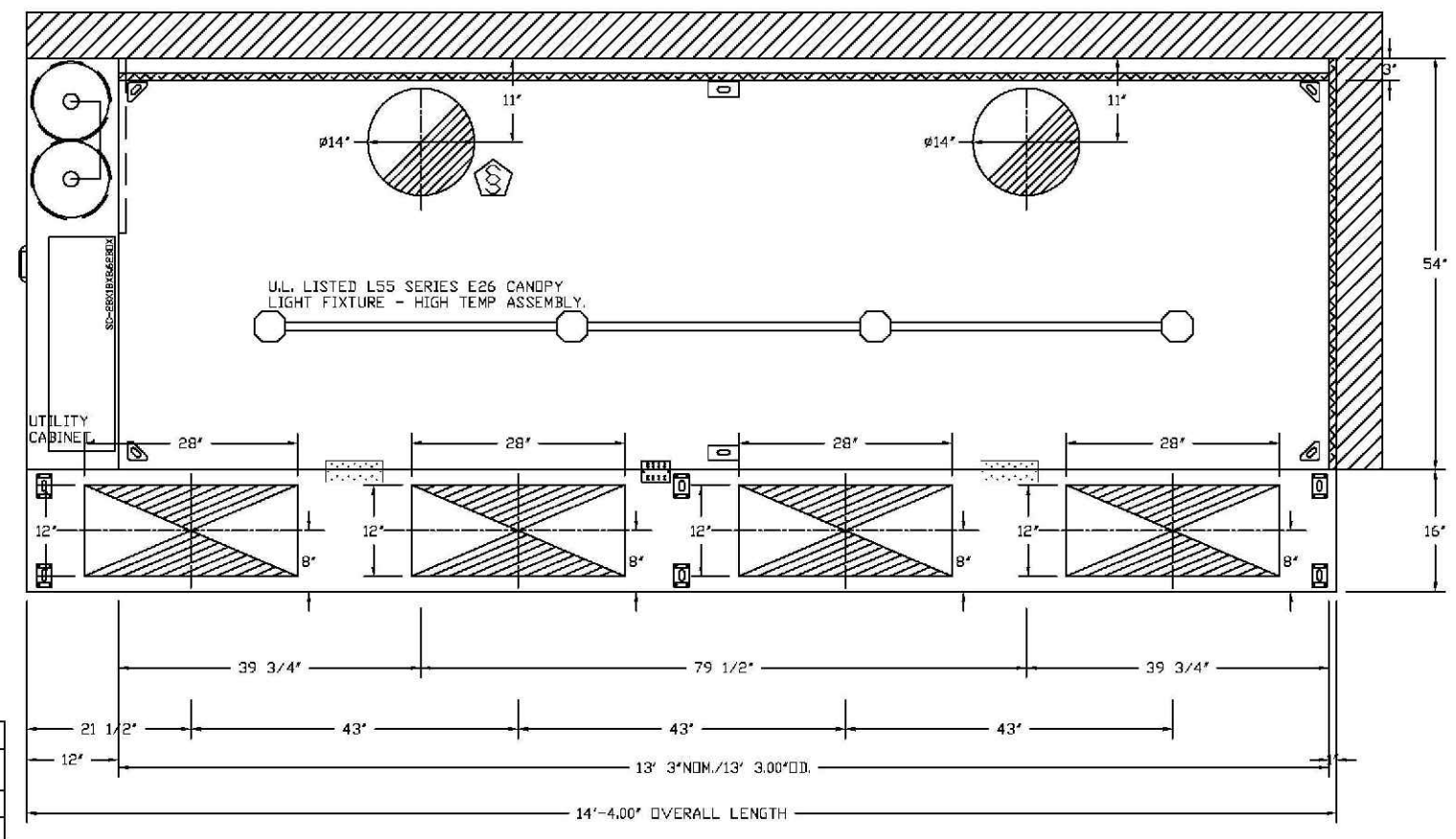
FIRE SYSTEM INFORMATION - JOB#6815900

FIRE SYSTEM NO.	TAG	TYPE	SIZE	MAX FP	DESIGN FP	INSTALLATION
1		TANK FS	4.0/4.0	48	66	FIRE CABINET LEFT WALL UTILITY CABINET LEFT

CLEARANCE TO COMBUSTIBLES

HOODS #	SURFACE	CLEARANCE
1	TOP	0"
	FRONT	0"
	BACK	0"
	LEFT	0"
2	RIGHT	0"
	TOP	0"
	FRONT	0"
	BACK	0"
3,4	LEFT	18"
	RIGHT	18"
	TOP	18"
	FRONT	18"
	LEFT	18"
	RIGHT	18"

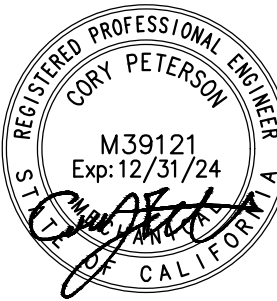
- 18" CLEARANCE TO COMBUSTIBLES CONFORMS TO UL710 STANDARD.
- HOOD MOUNTED UTILITY CABINETS REQUIRE 36" SERVICE CLEARANCE.



- REVIEWED -
EUREKA BUILDING DEPARTMENT
531 "K" STREET 441-4155
This plan check shall not be construed to be a permit for, or an approval of, any violation of the provisions of the Eureka Building Code
Reviewed by: BR Date: 10/9/24
Permit #: B-24-384



BELDEN
CONSULTING ENGINEERS
4457 Willow Road, Suite 100
Pleasanton, California 94588
phone: (925) 621-5300 fax: (925) 203-5758
belden@beldeninc.com
24013/NS



1917 5TH ST.
EUREKA, CA 95501
A.P.N 002-105-018

HOOD DRAWINGS

Project Number: _____
Plan Check Number: _____

01/31/2024	VERSION 2023.04
09/24/2024	OWNER REVISION



BELDEN
CONSULTING ENGINEERS
4457 Willow Road, Suite 100
Pleasanton, California 94588
phone: (925) 621-5300 fax: (925) 203-5758
belden@beldeninc.com
24013/NS

REVISIONS

NO.	DESCRIPTION	DATE

CAPTIVE
Southern CA National Accounts
3822 Day Ave. Suite 202, Tustin, CA 92780 PHONE: (714) 977-2883 EMAIL: capt@captivemfg.com

Habit - Eureka, CA
EUREKA, CA, 95501

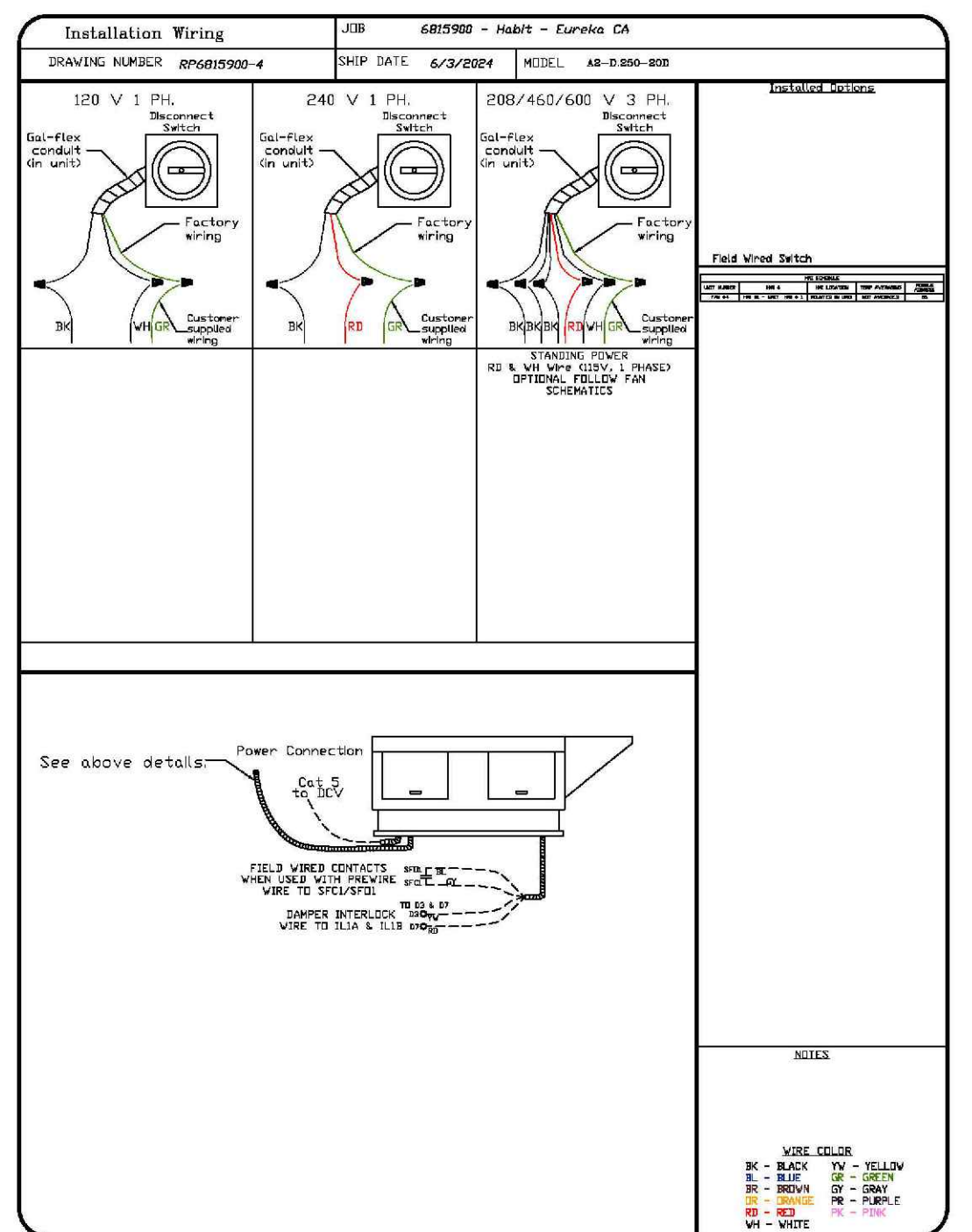
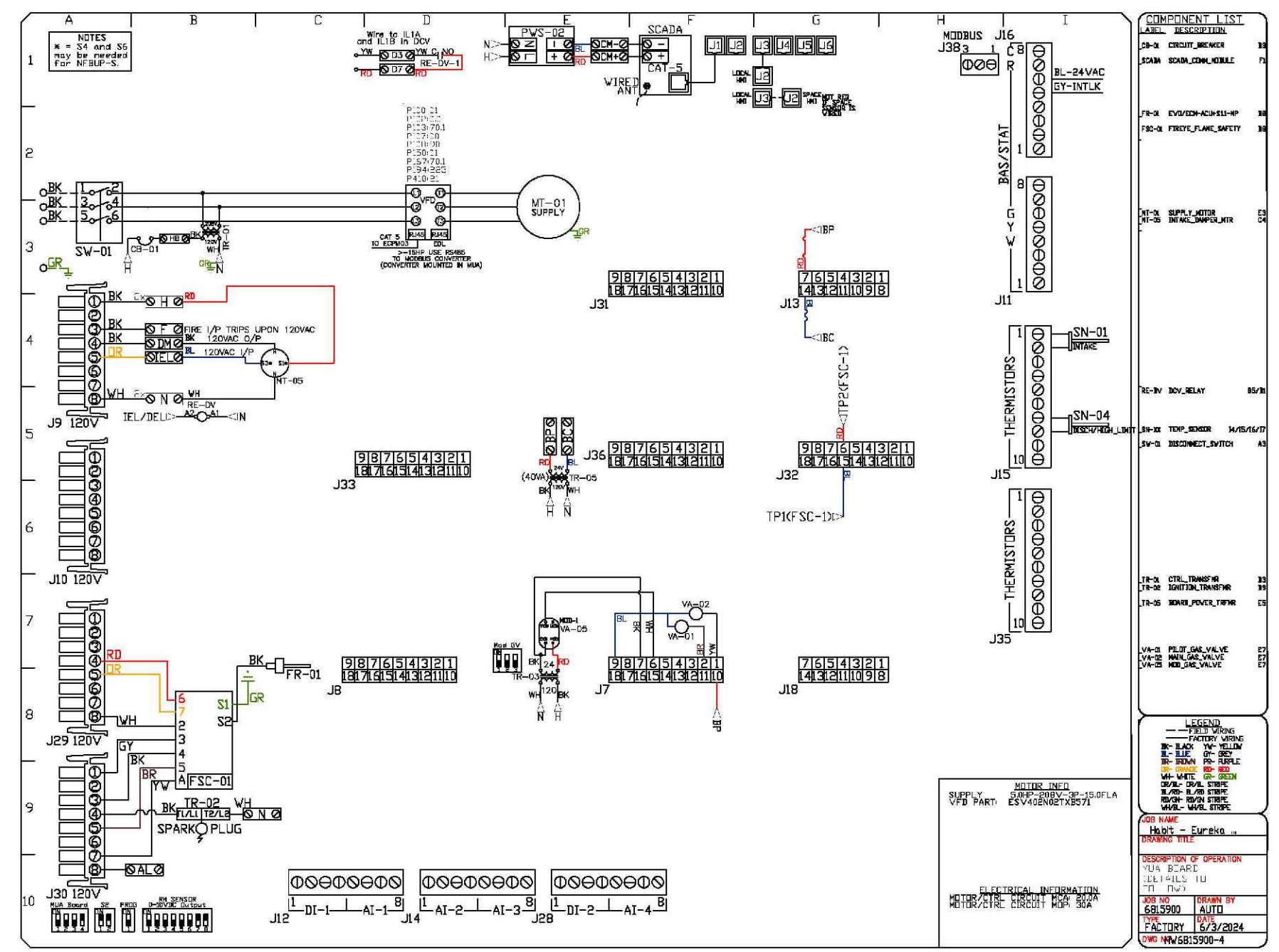
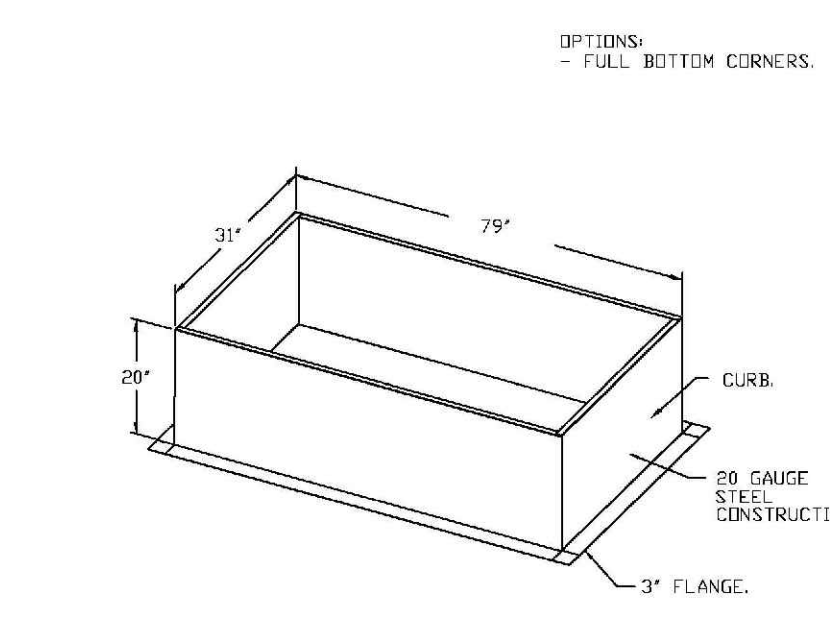
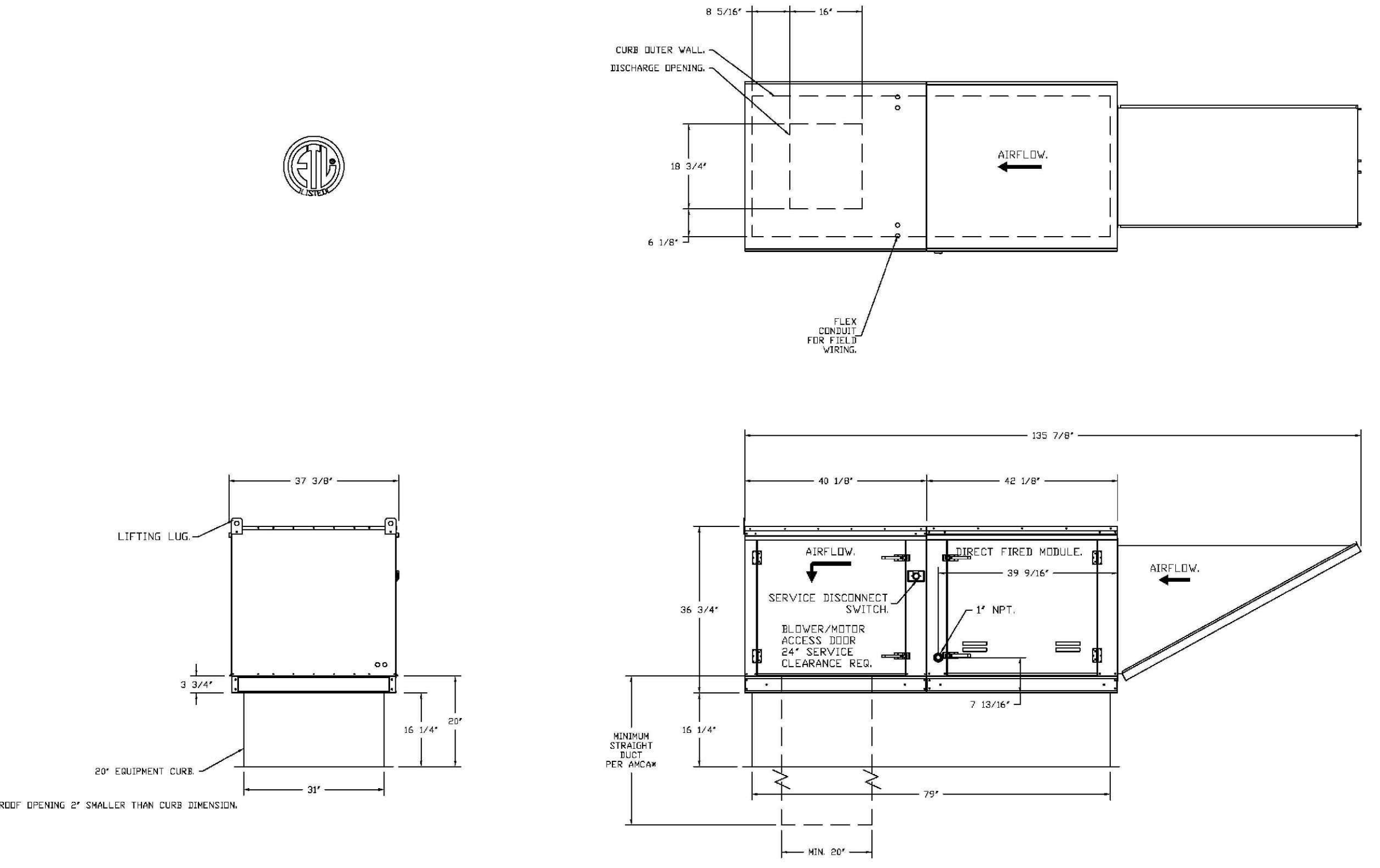
DATE: 6/3/2024
DWG.#: 6815900
DRAWN BY: AH-B3
SCALE: 3/4" = 1'-0"
MASTER DRAWING

SHEET NO. 3

- FAN #4 62-2250-202 - HEATER
1. DIRECT GAS FIRED HEATED MAKE UP AIR UNIT WITH 80" MIXED FLOW DIRECT DRIVE FAN
 2. INRAKE HEED WITH 12" FILTERS
 3. DOWN DISCHARGE - AIR FLOW RIGHT -> LEFT
 4. DOWN DISCHARGE CONSTRUCTION FOR SIZE 2 DIRECT DRIVE AUGUS
 5. GAS PRESSURE RANGE: 0.25" TO 2.5" INCHES; 1/4" THREAD SIZE
 6. GAS PRESSURE RANGE: 0.25" TO 2.5" INCHES; 1/4" THREAD SIZE
 7. INTERLOCK VALVE OPTION FOR HOT SIDE 2" NIP VALVE
 8. SHIP LOGS GAS STRAINER TO BE INSTALLED UPSTREAM OF UNIT CONNECTION
 9. GASLINE BUILDING MONITORING SYSTEM CONNECTIONS INCLUDE: SHUTTER, 1/2" FLEX VALVE STRIKE CONNECTION IN 24 CELLULAR SERVICE. INCLUDES REV 3 COMM MODULE, 8 GAS TO MODBUS CONVERTER, 2 FT CAT5 CABLE, AND 1 FT OF DIRECTIVE SYSTEM PAPER
 10. NOTIFIED BACK SHAF DAMPER 20.25" X 24" FOR SIZE 2 STANDARD & MODULAR HEATER UNITS W/EXTENDED SHAF, STANDARD GALVANNEED CONSTRUCTION, 24" X 24" FLANGE, LOW LEAKAGE, 1/2" ISO ACTUATOR INCLUDES
 11. UNIT MOUNTED VFD FOR USE WITH EXPLOS
 12. SINGEL DIESEL WALL, INSULATED STEEL ASSEMBLY CRUISER/BLOWER SECTION
 13. 2 YEAR PARTS WARRANTY

SUPPLY SIDE HEATER INFORMATION

WINTER TEMPERATURE = 27°F, TEMP. RISE = 48°F.
 FLEX CALCULATED BY ACTUAL AIR DENSITY
 OUTPUT BTU/H AT ALTITUDE OF 20 FT = 220000
 INPUT BTU/H AT ALTITUDE OF 20 FT = 220000
 OUTPUT BTU/H AT ALTITUDE OF 19 FT = 220000
 INPUT BTU/H AT ALTITUDE OF 19 FT = 220000



- REVIEWED -
EUREKA BUILDING DEPARTMENT
531 "K" STREET 441-4155
This plan check shall not be construed to be a permit for, or an approval of, any violation of the provisions of the Eureka Building Code
Reviewed by: BR Date: 10/9/24
Permit #: B-24-384

RECEIVED
10/02/2024
EUREKA BUILDING DEPARTMENT



Milestone Associates
Imagining
a California Corporation

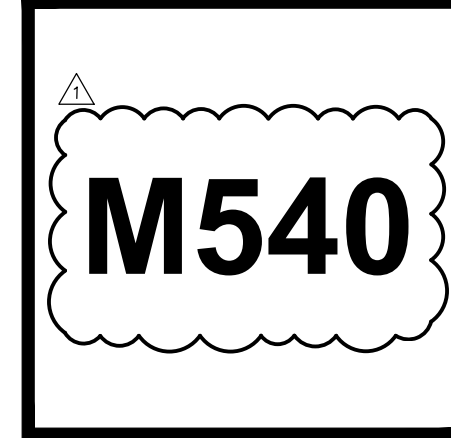
1000 LINCOLN ROAD, SUITE H202
MILPITAS, CALIFORNIA 95034

TEL: 530-755-4700
FAX: 530-755-4567

1917 5TH ST.
EUREKA, CA 95501
A.P.N 002-105-018

HOOD DRAWINGS

Project Number:	
01/31/2024	VERSION 2023.04
09/24/2024	OWNER REVISION



BELDEN
CONSULTING ENGINEERS

4457 Willow Road, Suite 100
Pleasanton, California 94588
phone: (925) 621-5300 fax: (925) 203-5758
belden@beldeninc.com
24013/NS

REVISIONS

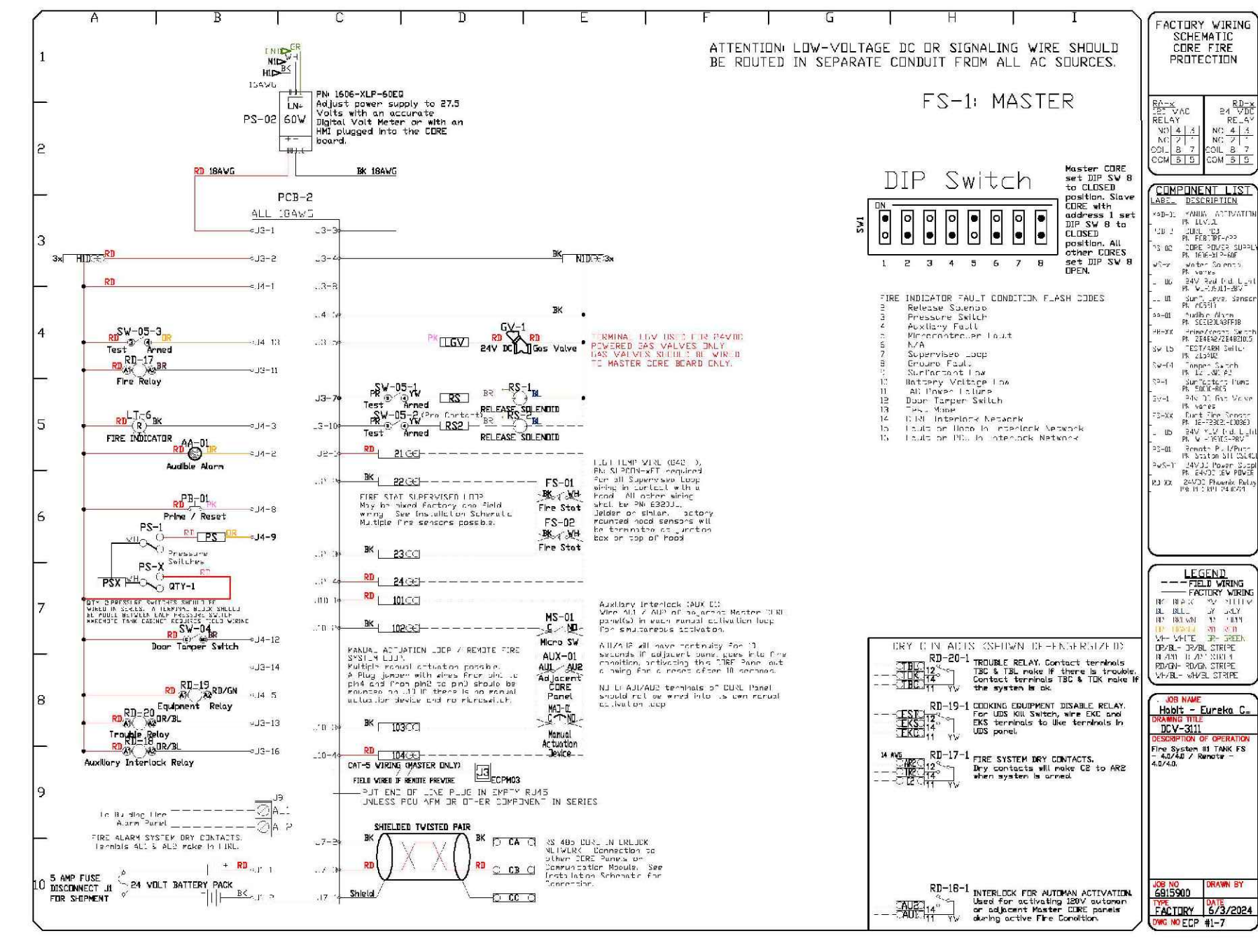
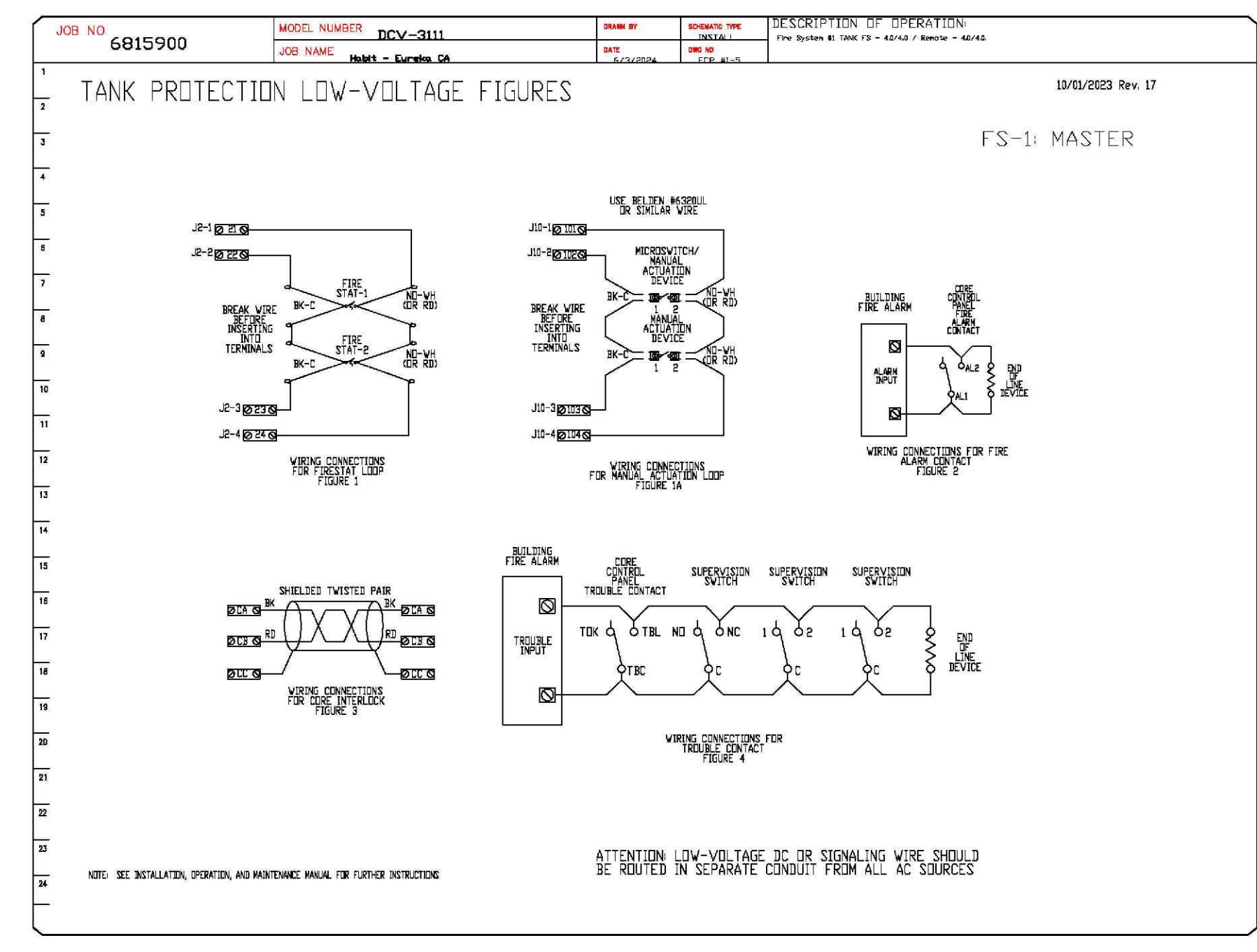
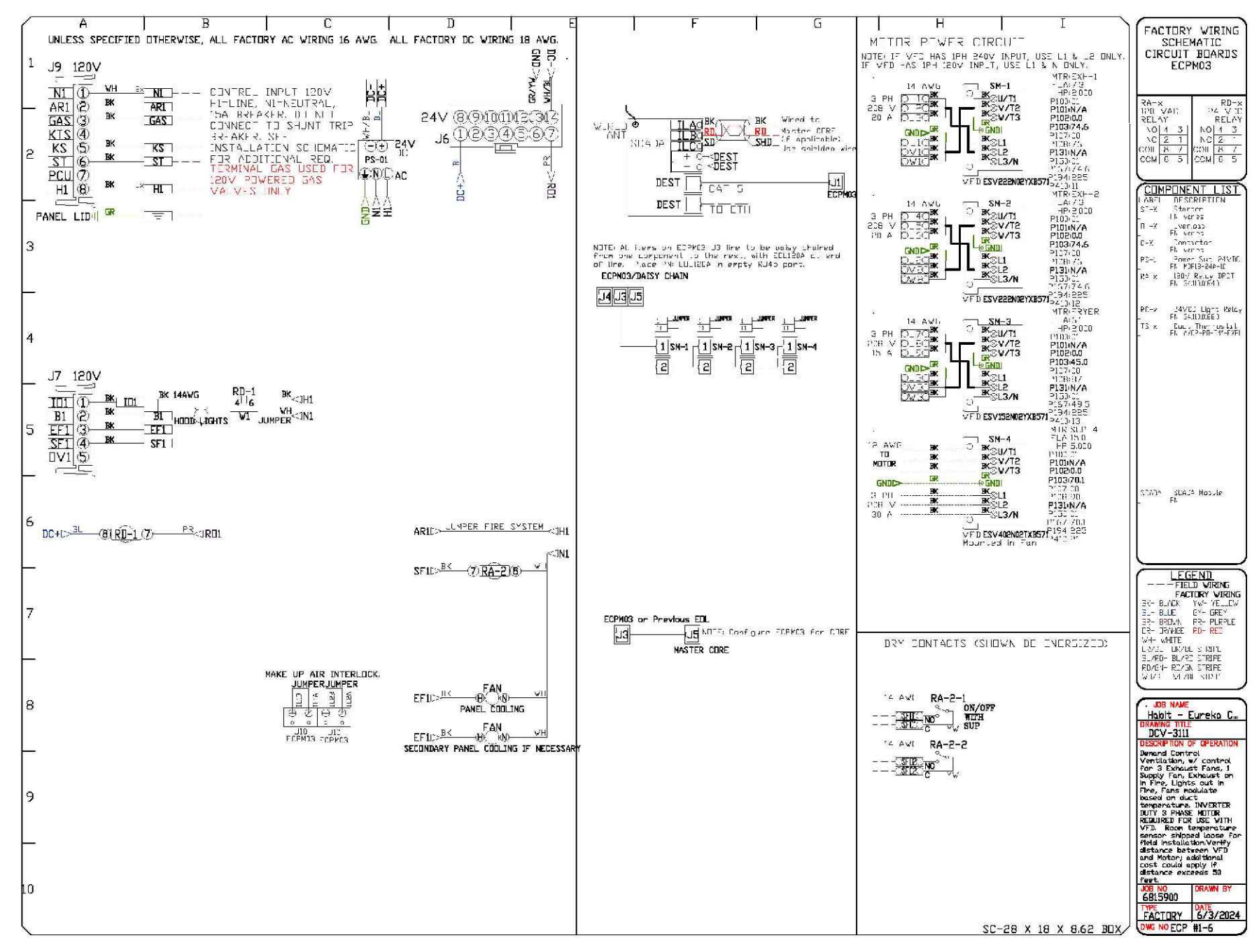
NO.	DESCRIPTION	DATE

CAPTIVE
Southern CA National Accounts
www.captivewire.com
3022 Dow Ave. Ste. 202, Ukiah, CA 95582 PHONE: (714) 977-2925 EMAIL: info@captivewire.com

Habit - Eureka CA
EUREKA, CA, 95501

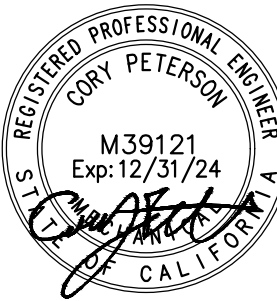
DATE: 6/3/2024
DWG.#: 6815900
DRAWN BY: AH-83
SCALE: 3/4" = 1'-0"
MASTER DRAWING

SHEET NO. 5



RECEIVED
10/02/2024
EUREKA BUILDING DEPARTMENT

- REVIEWED -
EUREKA BUILDING DEPARTMENT
531 "K" STREET 441-4155
This plan check shall not be construed to be a permit for, or an approval of, any violation of the provisions of the Eureka Building Code
Reviewed by: BR Date: 10/9/24
Permit #: B-24-384

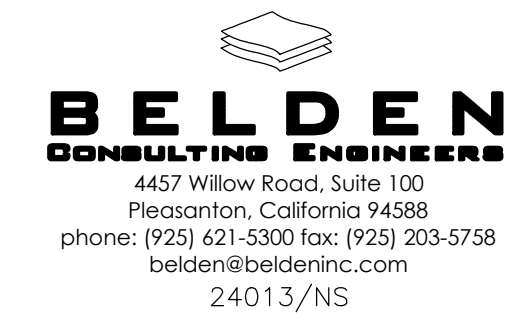


1917 5TH ST.
EUREKA, CA 95501
A.P.N 002-105-018

HOOD DRAWINGS

Project Number: _____
Plan Check Number: _____

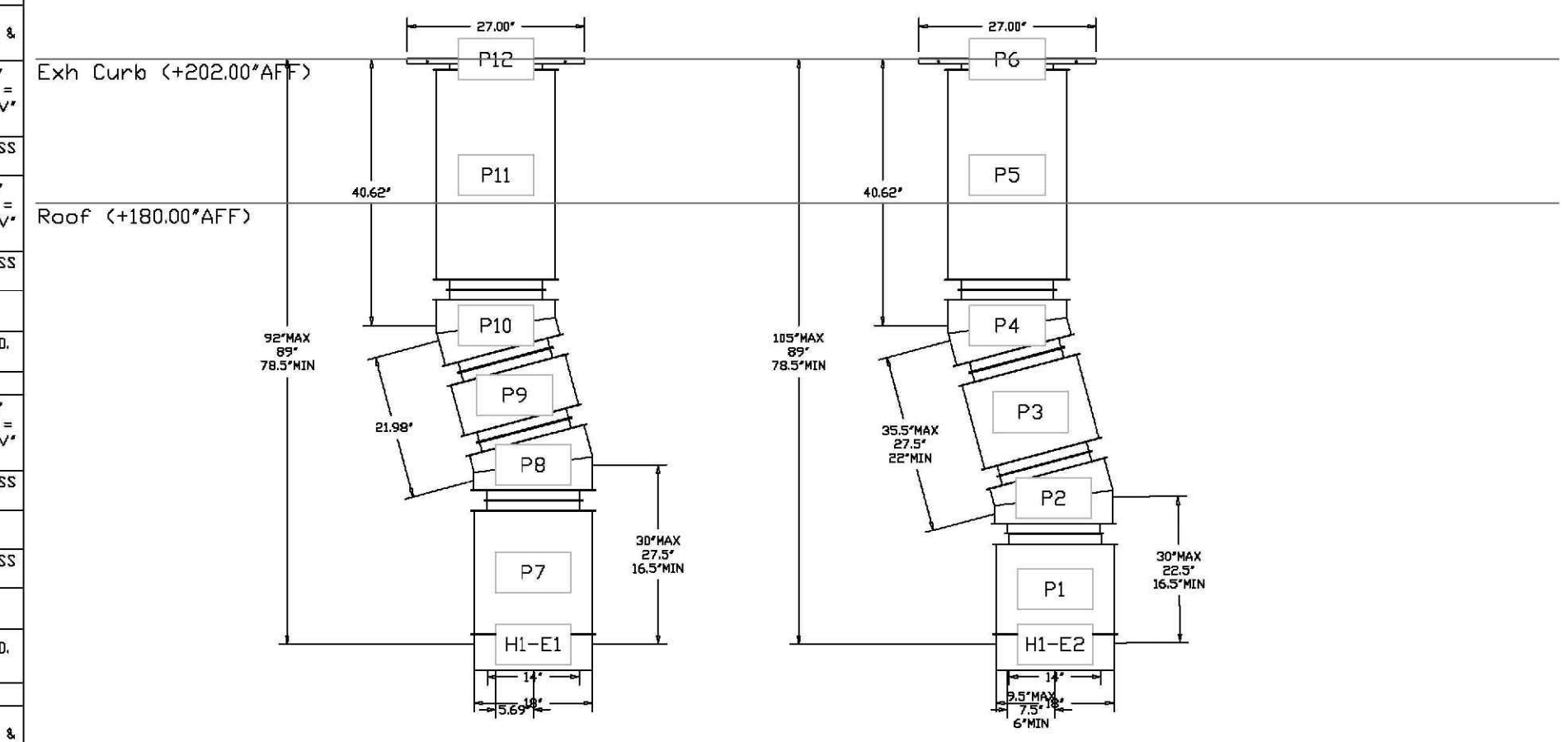
01/31/2024	REVISION	VERSION 2023.04
09/24/2024	BY: [Signature]	OWNER REVISION



CAPTIVE
 San Joaquin Co. Mechanical Department
 3022 Deer Ave., Suite 202, Turlock, CA 95750 PHONE: (714) 977-3800 EMAIL: info@captivaire.com

Description: _____
 Date: _____
 Scale: 3/4" = 1'-0"
 SHEET NO. 6

DUCTWORK #1 FRONT VIEW



DUCTWORK #1 PARTS - JOB#8815900 DOUBLE WALL

TAG	PART #	CFM	GPM	ZONE	COVERED BY	SP	WEIGHT	VELOCITY	QTY	DESCRIPTION
HI-E1	DW18DWRISER-2R-S	1800				-1.11	8.15	0.00	1	DOUBLE WALL RISER COVER - USED ON 14" INNER RISER, 4' LONG - 2 LAYERS REDUCED CLEARANCE - 18" STAINLESS STEEL OUTER RISER SHELL ASSEMBLY. INCLUDES INSULATION & SINGLE V CLAMPS FOR INNER & OUTER CONNECTIONS.
HI-E2	DW18DWRISER-2R-S	1800				-1.11	8.15	0.00	1	DOUBLE WALL RISER COVER - USED ON 14" INNER RISER, 4' LONG - 2 LAYERS REDUCED CLEARANCE - 18" STAINLESS STEEL OUTER RISER SHELL ASSEMBLY. INCLUDES INSULATION & SINGLE V CLAMPS FOR INNER & OUTER CONNECTIONS.
P1	DW1427DWAJD-2R-S	1800				-0.007	52.12	1683.79	1	DOUBLE WALL ADJUSTABLE DUCT - 14" INNER DUCT - 2 LAYERS REDUCED CLEARANCE - 18" STAINLESS STEEL OUTER SHELL. MIN LENGTH = 11' / MAX LENGTH = 24.5' / ADJUSTMENT = 13.5' / ADJUSTABLE SECTION MAY NEED TO BE CUT. INCLUDES SINGLE AND DOUBLE WALL 'V' CLAMPS.
P2	DW1415DWAY-2R-S	1800				-0.0368	15.00	1683.79	1	DOUBLE WALL ADJUSTABLE DUCT - 14" INNER 15 DUCT - 2 LAYERS REDUCED CLEARANCE - 18" STAINLESS STEEL OUTER SHELL.
P3	DW1427DWAJD-2R-S	1800				-0.007	52.12	1683.79	1	DOUBLE WALL ADJUSTABLE DUCT - 14" INNER DUCT - 2 LAYERS REDUCED CLEARANCE - 18" STAINLESS STEEL OUTER SHELL. MIN LENGTH = 11' / MAX LENGTH = 24.5' / ADJUSTMENT = 13.5' / ADJUSTABLE SECTION MAY NEED TO BE CUT. INCLUDES SINGLE AND DOUBLE WALL 'V' CLAMPS.
P4	DW1415DWAY-2R-S	1800				-0.0525	15.00	1683.79	1	DOUBLE WALL ADJUSTABLE DUCT - 14" INNER 15 DUCT - 2 LAYERS REDUCED CLEARANCE - 18" STAINLESS STEEL OUTER SHELL.
P5	DW1435DWTTP-2R-S	1800				-0.015	48.06	1683.79	1	DOUBLE WALL DUCT - 14" INNER DUCT, 35' LONG - 2 LAYERS REDUCED CLEARANCE - 18" STAINLESS STEEL OUTER SHELL - USED WITH TRANSITION PLATE.
P6	DW2614TPDBEX	1800				-1.250	12.50	1683.79	1	DUCT TO CURB TRANSITION 3/4" DOWN TURN, 26-1/2" CURB TO 14" DUCT, 16 GA ALUMINIZED. FOR USE WITH EXHAUST FANS.
P7	DW1427DWAJD-2R-S	1800				-0.009	52.12	1683.79	1	DOUBLE WALL ADJUSTABLE DUCT - 14" INNER DUCT - 2 LAYERS REDUCED CLEARANCE - 18" STAINLESS STEEL OUTER SHELL. MIN LENGTH = 11' / MAX LENGTH = 24.5' / ADJUSTMENT = 13.5' / ADJUSTABLE SECTION MAY NEED TO BE CUT. INCLUDES SINGLE AND DOUBLE WALL 'V' CLAMPS.
P8	DW1415DWAY-2R-S	1800				-0.0315	15.00	1683.79	1	DOUBLE WALL ADJUSTABLE DUCT - 14" INNER 15 DUCT - 2 LAYERS REDUCED CLEARANCE - 18" STAINLESS STEEL OUTER SHELL.
P9	DW1411DVL-2R-S	1800				-0.005	14.89	1683.79	1	DOUBLE WALL DUCT - 14" INNER DUCT, 11' LONG - 2 LAYERS REDUCED CLEARANCE - 18" STAINLESS STEEL OUTER SHELL.
P10	DW1415DWAY-2R-S	1800				-0.0525	15.00	1683.79	1	DOUBLE WALL ADJUSTABLE DUCT - 14" INNER 15 DUCT - 2 LAYERS REDUCED CLEARANCE - 18" STAINLESS STEEL OUTER SHELL.
P11	DW1435DWTTP-2R-S	1800				-0.015	48.06	1683.79	1	DOUBLE WALL DUCT - 14" INNER DUCT, 35' LONG - 2 LAYERS REDUCED CLEARANCE - 18" STAINLESS STEEL OUTER SHELL - USED WITH TRANSITION PLATE.
P12	DW2614TPDBEX	1800				-1.250	12.50	1683.79	1	DUCT TO CURB TRANSITION 3/4" DOWN TURN, 26-1/2" CURB TO 14" DUCT, 16 GA ALUMINIZED. FOR USE WITH EXHAUST FANS.
RC1	DW18DWRISER-2R-S						8.15		1	DOUBLE WALL RISER COVER - USED ON 14" INNER RISER, 4' LONG - 2 LAYERS REDUCED CLEARANCE - 18" STAINLESS STEEL OUTER RISER SHELL ASSEMBLY. INCLUDES INSULATION & SINGLE V CLAMPS FOR INNER & OUTER CONNECTIONS.
RC2	DW18DWRISER-2R-S						8.15		1	DOUBLE WALL RISER COVER - USED ON 14" INNER RISER, 4' LONG - 2 LAYERS REDUCED CLEARANCE - 18" STAINLESS STEEL OUTER RISER SHELL ASSEMBLY. INCLUDES INSULATION & SINGLE V CLAMPS FOR INNER & OUTER CONNECTIONS.
	3M-2000PLUS						0.80		3	DUCT - 3M FIRE BARRIER 2000 PLUS SILICONE - USED AS SEALANT TO SEAL DUCT JOINTS.
	DW14DCLASY-2R-S						7.21		4	DUCT - 14" DUCT - 18" DOUBLE 'V' CLAMP - 2R INSULATION & SINGLE 'V' CLAMP INCLUDED - REDUCED CLEARANCE.
TOTAL WEIGHT							416.21			

- SINGLE WALL FACTORY BUILT DUCTWORK**
- ALL DUCTWORK IS REQUIRED TO BE INSTALLED WITH THE MAXIMUM SUPPORT SPACING LISTED BELOW.
 - FOR A COMPLETE LIST OF APPROVED SUPPORT METHODS, SEE THE INSTALLATION AND OPERATION MANUAL.
 - DUCTWORK SHALL SLOPE NOT LESS THAN 1/16" PER LINEAR FOOT TOWARDS THE HOOD OR AN APPROVED GREASE COLLECTION RESERVOIR.
 - WHERE HORIZONTAL DUCTS EXCEED 75 FEET IN LENGTH, THE SLOPE SHALL NOT BE LESS THAN 3/16" PER LINEAR FOOT.

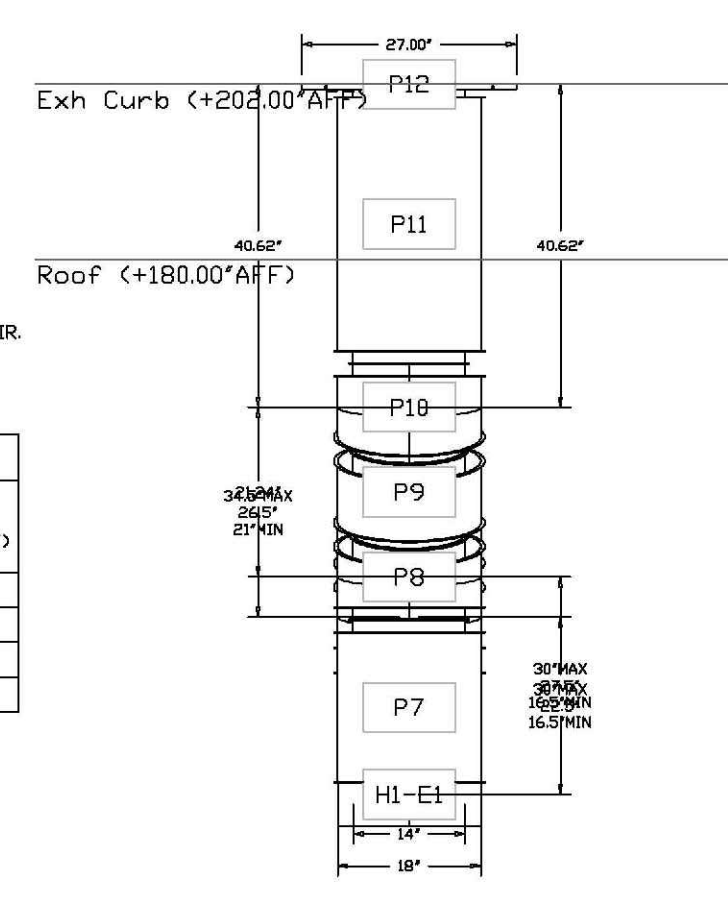
DUCT DIAMETER	HORIZONTAL SUPPORT (FT)	VERTICAL WALL SUPPORT (FT)	VERTICAL CURB SUPPORT (FT)
5"	10'	10'	24'
6"	10'	10'	24'
7"	10'	10'	24'
8"	10'	10'	24'
10"	10'	10'	24'
12"	10'	10'	24'
14"	10'	10'	24'
16"	10'	10'	24'
18"	10'	10'	24'
20"	10'	10'	24'
22"	10'	10'	24'
24"	10'	10'	24'
26"	10'	10'	24'
28"	10'	10'	24'
30"	10'	10'	24'
32"	10'	10'	24'
34"	10'	10'	24'
36"	10'	10'	24'

- DOUBLE WALL FACTORY BUILT DUCTWORK**
- ALL DUCTWORK IS REQUIRED TO BE INSTALLED WITH THE MAXIMUM SUPPORT SPACING LISTED BELOW.
 - FOR A COMPLETE LIST OF APPROVED SUPPORT METHODS, SEE THE ENTIRE INSTALLATION AND OPERATION MANUAL.
 - DUCTWORK SHALL SLOPE NOT LESS THAN 1/16" PER LINEAR FOOT TOWARDS THE HOOD OR AN APPROVED GREASE COLLECTION RESERVOIR.
 - WHERE HORIZONTAL DUCTS EXCEED 75 FEET IN LENGTH, THE SLOPE SHALL NOT BE LESS THAN 3/16" PER LINEAR FOOT.

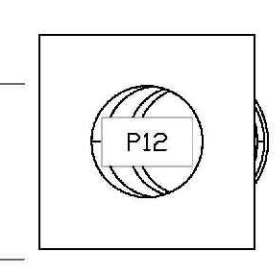
HORIZONTAL		VERTICAL			
DUCT DIAMETER	SUPPORT SPACING (FT)	TYPE	WALL SUPPORT (FT)	CURB SUPPORT (FT)	FLOOR SUPPORT (FT)
2R & 2R HT (5'-16")	7'	2R	20'	24'	24'
2R (18")	7'	2R	18'	24'	24'
3R & 3Z (5'-24")	7'	3R	10'	24'	24'
3Z (26"-36")	7'	3Z	10'	20'	20'
5"	7'				
6"	7'				
7"	7'				
8"	7'				
10"	7'				
12"	7'				
14"	7'				
16"	7'				
18"	5'				
20"	5'				
22"	5'				
24"	5'				
26"	5'				
28"	5'				
30"	5'				
32"	5'				
34"	5'				
36"	5'				

DO NOT LEAK TEST USING SMOKE BOMBS CONTAINING CHLORINES/CHLORIDES. CONSULT WITH CAPTIVEAIRE FOR PROPER LEAK TESTING METHODS.

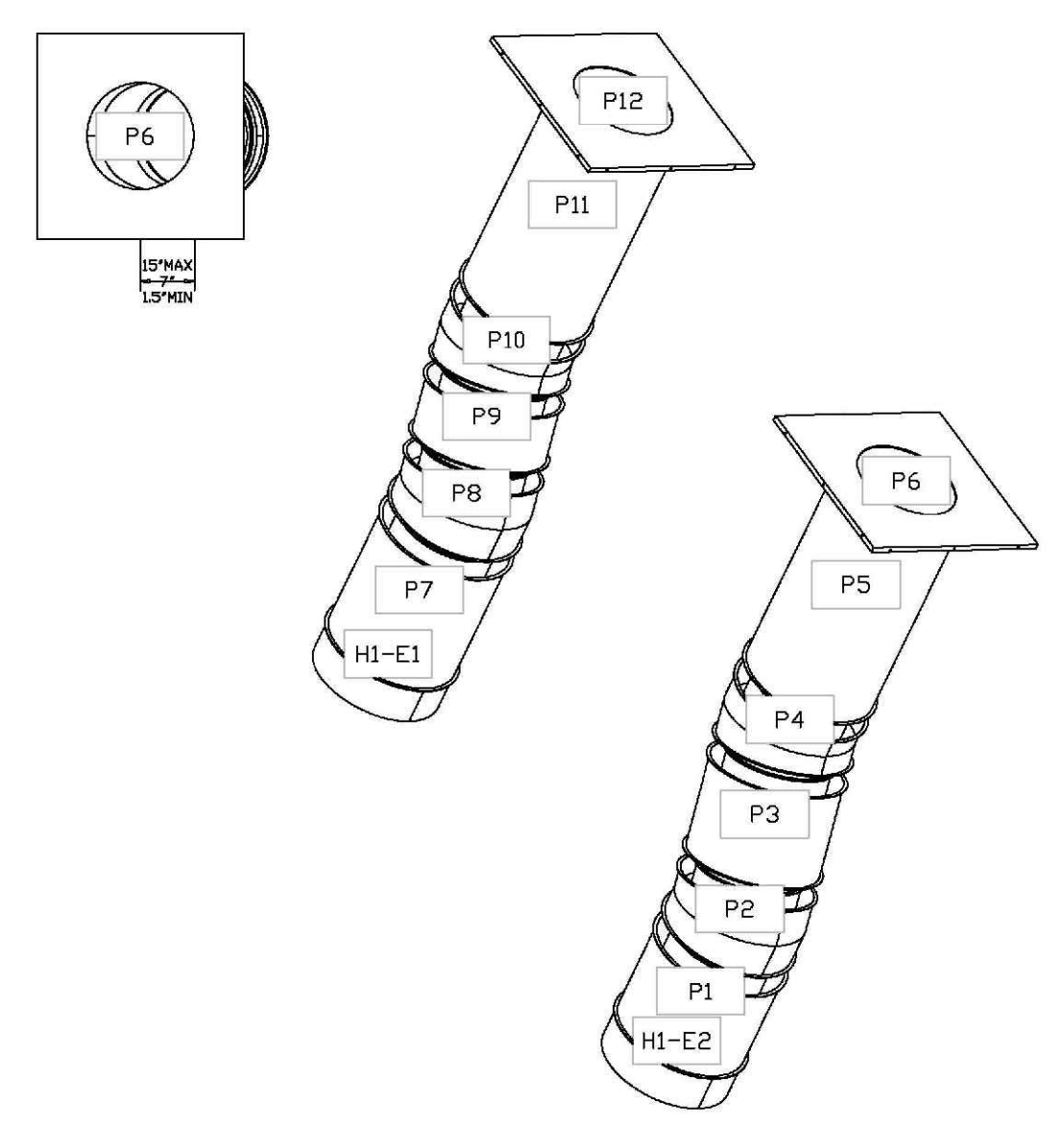
DUCTWORK #1 SIDE VIEW



DUCTWORK #1 TOP VIEW

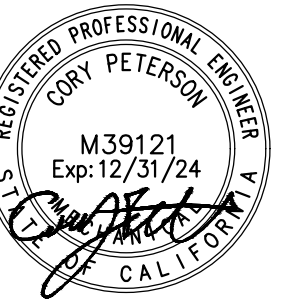


DUCTWORK #1 SE VIEW



- REVIEWED -
EUREKA BUILDING DEPARTMENT
531 "K" STREET 441-4155
This plan check shall not be construed to be a permit for, or an approval of, any violation of the provisions of the Eureka Building Code
Reviewed by: BR Date: 10/9/24
Permit #: B-24-384

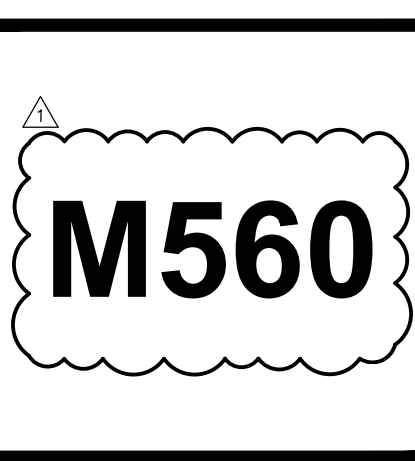




1917 5TH ST.
EUREKA, CA 95501
A.P.N 002-105-018

HOOD DRAWINGS

Project Number:	
Plan Check Number:	
01/31/2024	VERSION 2023.04
09/24/2024	OWNER REVISION



CAPTIVE
 San Joaquin Co. Air Pollution Control District
 3002 Deer Ave., Suite 202, Turlock, CA 95290 PHONE: (714) 977-3900 EMAIL: info@captivaire.com

Habit - Eureka, CA
 Eureka, CA, 95501

DATE: 6/3/2024
 DRAWN BY: 6815900
 CHECKED BY: AH-83
 SCALE: 3/4" = 1'-0"
 DWG. NUMBER:

SHEET NO.
 7

DUCTWORK #2 PARTS - JOB#6815900 DOUBLE WALL

TAG	PART #	CFM	GPM	ZONE	COVERED BY	SP	WEIGHT	VELOCITY	QTY	DESCRIPTION
H2-E1	DV18DWRISER-2R-S	1750				-1.213	815	0.00	1	DOUBLE WALL RISER COVER - USED ON 14" INNER RISER, 4" LONG - 2 LAYERS REDUCED CLEARANCE - 18" STAINLESS STEEL OUTER RISER SHELL ASSEMBLY. INCLUDES INSULATION & SINGLE V CLAMPS FOR INNER & OUTER CONNECTIONS.
P1	DV1427DVAJD-2R-S	1750				-0.007	52.12	1637.02	1	DOUBLE WALL ADJUSTABLE DUCT - 14" INNER DUCT - 2 LAYERS REDUCED CLEARANCE - 18" STAINLESS STEEL OUTER SHELL. MIN LENGTH = 11' / MAX LENGTH = 24.5' / ADJUSTMENT = 12.5' / ADJUSTABLE SECTION MAY NEED TO BE CUT. INCLUDES SINGLE AND DOUBLE WALL "V" CLAMPS.
P2	DV1430DVASY-2R-S	1750				-0.03	16.79	1637.02	1	DOUBLE WALL DUCT - 14" INNER 30 DUCT - 2 LAYERS REDUCED CLEARANCE - 18" STAINLESS STEEL OUTER SHELL.
P3	DV1427DVAJD-2R-S	1750				-0.005	52.12	1637.02	1	DOUBLE WALL ADJUSTABLE DUCT - 14" INNER DUCT - 2 LAYERS REDUCED CLEARANCE - 18" STAINLESS STEEL OUTER SHELL. MIN LENGTH = 11' / MAX LENGTH = 24.5' / ADJUSTMENT = 12.5' / ADJUSTABLE SECTION MAY NEED TO BE CUT. INCLUDES SINGLE AND DOUBLE WALL "V" CLAMPS.
P4	DV1430DVASY-2R-S	1750				-0.05	16.79	1637.02	1	DOUBLE WALL DUCT - 14" INNER 30 DUCT - 2 LAYERS REDUCED CLEARANCE - 18" STAINLESS STEEL OUTER SHELL.
P5	DV1435DVLTP-2R-S	1750				-0.014	48.06	1637.02	1	DOUBLE WALL DUCT - 14" INNER DUCT, 35" LONG - 2 LAYERS REDUCED CLEARANCE - 18" STAINLESS STEEL OUTER SHELL - USED WITH TRANSITION PLATE.
P6	DV2614TPDBEX	1750					12.50	1637.02	1	DUCT TO CURB TRANSITION 3/4" DOWN TURN, 26-1/2" CURB TO 14" DUCT, 16 GA ALUMINIZED. FOR USE WITH EXHAUST FANS.
ASSEMBLED V/P6										
SYSTEM AT P6						-1.319	0.80			
RC1	DV18DWRISER-2R-S						815		1	DOUBLE WALL RISER COVER - USED ON 14" INNER RISER, 4" LONG - 2 LAYERS REDUCED CLEARANCE - 18" STAINLESS STEEL OUTER RISER SHELL ASSEMBLY. INCLUDES INSULATION & SINGLE V CLAMPS FOR INNER & OUTER CONNECTIONS.
	3M-2000PLUS						0.80		2	DUCT - 3M FIRE BARRIER 2000 PLUS SILICONE - USED AS SEALANT TO SEAL DUCT JOINTS.
	DV14DCLASY-2R-S						7.21		1	DUCT - 14" DUCT - 18" DOUBLE "V" CLAMP - 18" INSULATION & SINGLE "V" CLAMP INCLUDED - REDUCED CLEARANCE.
TOTAL WEIGHT							2823.47			

- SINGLE WALL FACTORY BUILT DUCTWORK**
- ALL DUCTWORK IS REQUIRED TO BE INSTALLED WITH THE MAXIMUM SUPPORT SPACING LISTED BELOW.
 - FOR A COMPLETE LIST OF APPROVED SUPPORT METHODS, SEE THE INSTALLATION AND OPERATION MANUAL.
 - DUCTWORK SHALL SLOPE NOT LESS THAN 1/16" PER LINEAR FOOT TOWARDS THE HOOD OR AN APPROVED GREASE COLLECTION RESERVOIR.
 - WHERE HORIZONTAL DUCTS EXCEED 75 FEET IN LENGTH, THE SLOPE SHALL NOT BE LESS THAN 3/16" PER LINEAR FOOT.

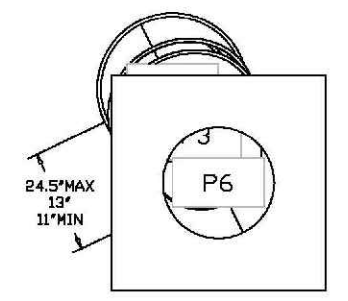
DUCT DIAMETER	HORIZONTAL SUPPORT (FT)	VERTICAL WALL SUPPORT (FT)	VERTICAL CURB SUPPORT (FT)
5"	10'	10'	24'
6"	10'	10'	24'
7"	10'	10'	24'
8"	10'	10'	24'
10"	10'	10'	24'
12"	10'	10'	24'
14"	10'	10'	24'
16"	10'	10'	24'
18"	10'	10'	24'
20"	10'	10'	24'
22"	10'	10'	24'
24"	10'	10'	24'
26"	10'	10'	24'
28"	10'	10'	24'
30"	10'	10'	24'
32"	10'	10'	24'
34"	10'	10'	24'
36"	10'	10'	24'

- DOUBLE WALL FACTORY BUILT DUCTWORK**
- ALL DUCTWORK IS REQUIRED TO BE INSTALLED WITH THE MAXIMUM SUPPORT SPACING LISTED BELOW.
 - FOR A COMPLETE LIST OF APPROVED SUPPORT METHODS, SEE THE ENTIRE INSTALLATION AND OPERATION MANUAL.
 - DUCTWORK SHALL SLOPE NOT LESS THAN 1/16" PER LINEAR FOOT TOWARDS THE HOOD OR AN APPROVED GREASE COLLECTION RESERVOIR.
 - WHERE HORIZONTAL DUCTS EXCEED 75 FEET IN LENGTH, THE SLOPE SHALL NOT BE LESS THAN 3/16" PER LINEAR FOOT.

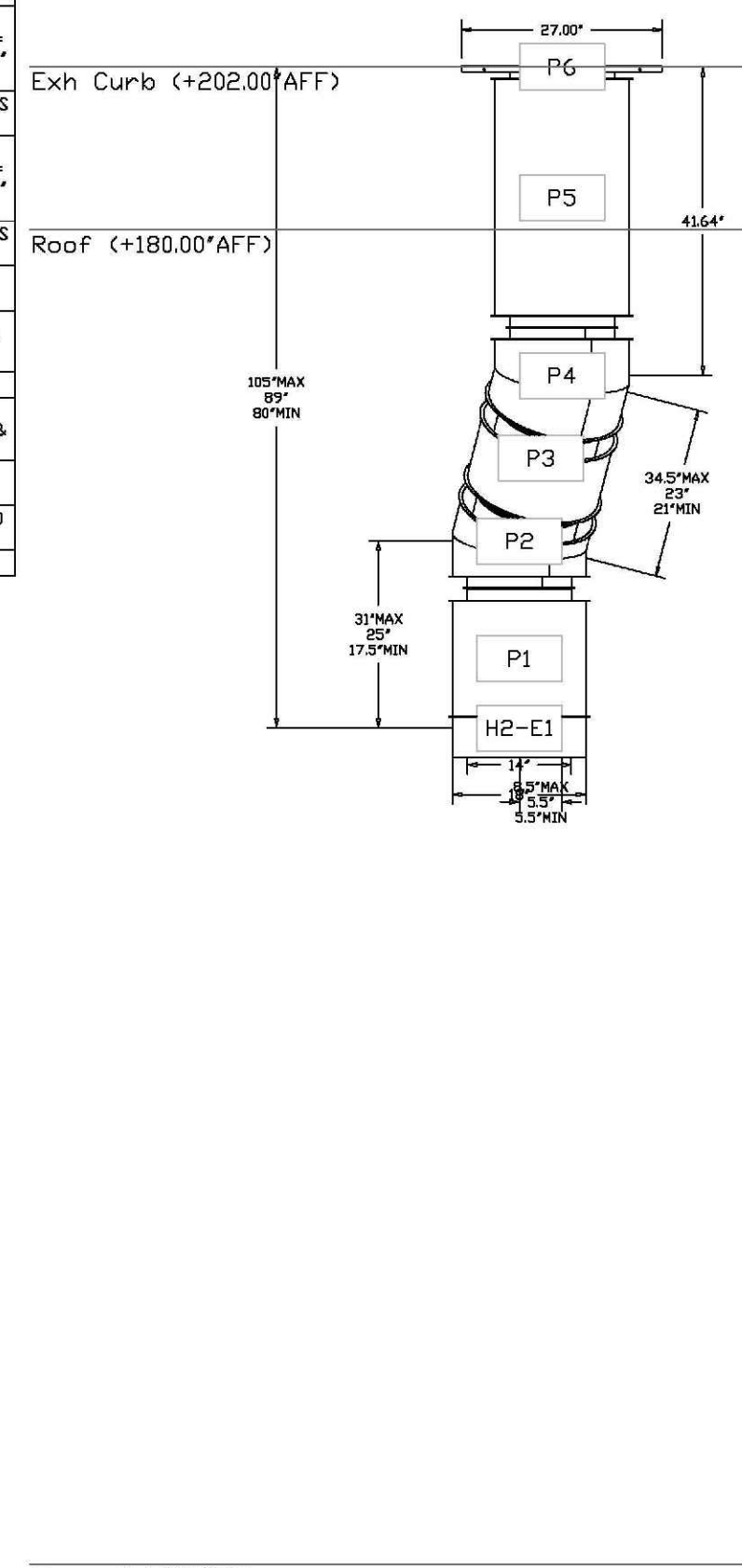
HORIZONTAL		VERTICAL			
DUCT DIAMETER	SUPPORT SPACING (FT)	TYPE	WALL SUPPORT (FT)	CURB SUPPORT (FT)	FLOOR SUPPORT (FT)
5"	7'	2R & 2R HT (5'-16")	20'	24'	24'
6"	7'	2R (18")	18'	24'	24'
7"	7'	3R & 3Z (5'-24")	10'	24'	24'
8"	7'	3Z (26'-36")	10'	20'	20'
10"	7'				
12"	7'				
14"	7'				
16"	7'				
18"	5'				
20"	5'				
22"	5'				
24"	5'				
26"	5'				
28"	5'				
30"	5'				
32"	5'				
34"	5'				
36"	5'				

DO NOT LEAK TEST USING SMOKE BOMBS CONTAINING CHLORINES/CHLORIDES. CONSULT WITH CAPTIVEAIRE FOR PROPER LEAK TESTING METHODS.

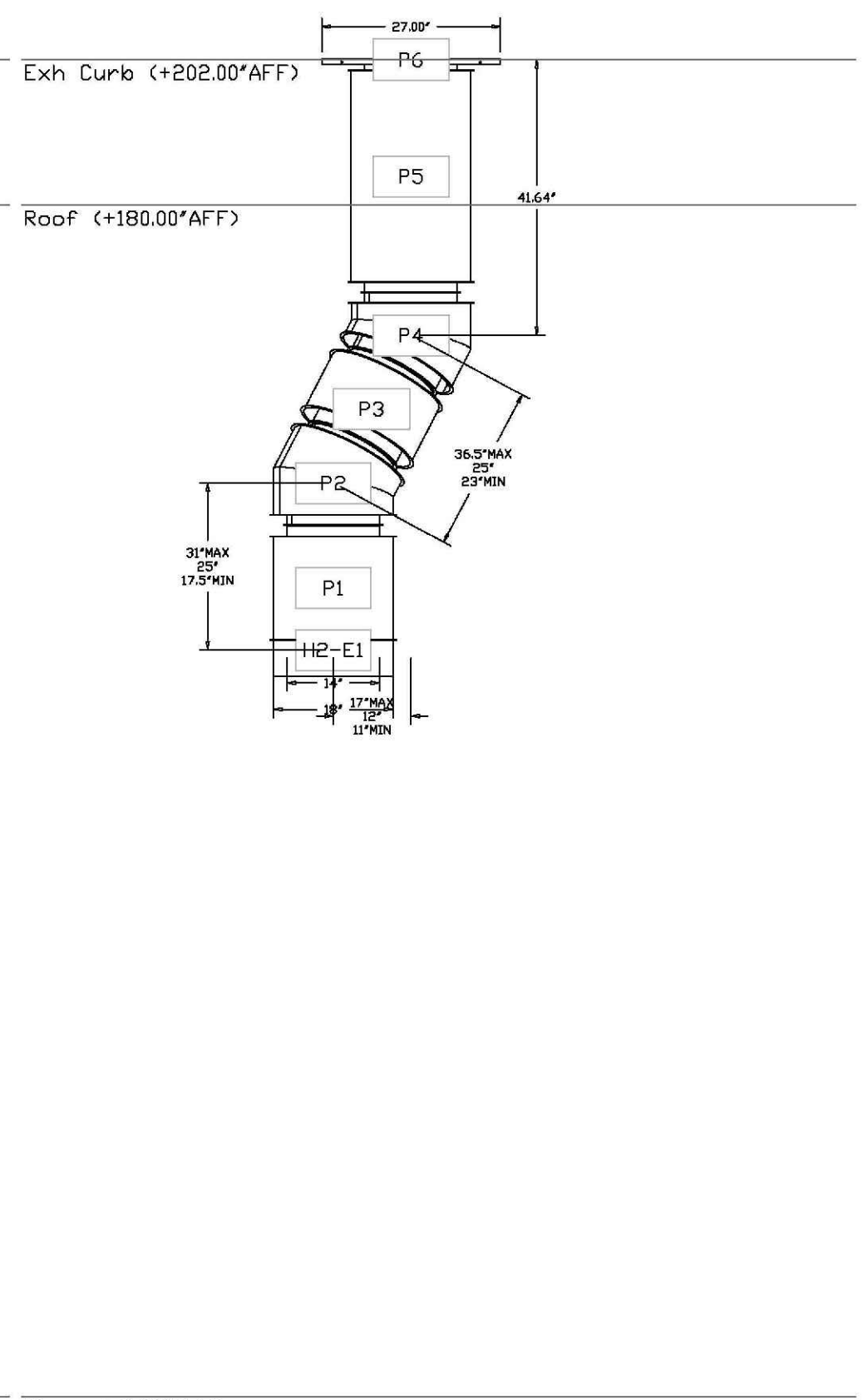
DUCTWORK #2 TOP VIEW



DUCTWORK #2 FRONT VIEW



DUCTWORK #2 SIDE VIEW



Floor (+0.00'AFF)

Floor (+0.00'AFF)

- REVIEWED -
 EUREKA BUILDING DEPARTMENT
 531 "K" STREET 441-4155
 This plan check shall not be construed to be a permit for, or an approval of, any violation of the provisions of the Eureka Building Code
 Reviewed by: BR Date: 10/9/24
 Permit #: B-24-384

