

Report By:

National TAB
1329 E. KEMPER ROAD
SUITE 4210
CINCINNATI, OH 45246



Report: TAB Report
Function: Test, Adjust, & Balance
Date: 05/05/2025
Completed By: National TAB

PROJECT
04-28-25 ALBERTSONS #991 PEORIA, AZ

8240 W. DEER VALLEY RD

PEORIA, AZ 85382

Client

TRS-SESCO LLC
721-A Park Centre Dr
Kernersville, NC 27284

National TAB

Project: 04-28-25 ALBERTSONS #991 PEORIA, AZ

Table Of Contents

| Section | Page # |
|---------------------|---------------|
| Summary | 3 |
| Remarks | 4 |
| Balance Schedule | 12 |
| Checklists | 13 |
| AHU/RTU | 22 |
| FAN - Exhaust | 32 |
| FAN - Supply | 39 |
| Kitchen Hood Type I | 40 |
| GRD Layout | 44 |

National TAB

Project: 04-28-25 ALBERTSONS #991 PEORIA, AZ

- [Open Albertsons_991_Air_Balance.xlsx](#)

Issue List

- AC-1 NO OA & RETURN DAMPER INSTALLED
- AC-3 OA VENT NOT INSTALLED
- AC-4 HIGH OA
- EF-3 UNABLE TO MEET DESIGN AIRFLOW
- EF-7 NOT FUNCTIONAL
- EF-9 NOT FUNCTIONAL
- HEF-1 MOTOR SHEAVE SEIZED



04-28-25 ALBERTSONS #991 PEORIA, AZ

Project Issue Information

Issue Name : AC-1 NO OA & RETURN DAMPER INSTALLED
Description : Outside air and return dampers not installed. Unable to set OA.
Recommend installing dampers to set OA to design.
Created By : National TAB **Assigned To :** National TAB - Will Turnbough
Status : Open
Priority : Medium **Asset Tag :**
Originated Date : 04/29/2025 - David Nicolas Sanchez - National TAB

Project Issue File Details



04/29/2025



04/29/2025



04-28-25 ALBERTSONS #991 PEORIA, AZ

Project Issue Information

Issue Name : AC-3 OA VENT NOT INSTALLED
Description : AC-3 OA vent not installed. Unable to set OA for unit. Recommend installing OA and OA damper in order to set OA to design.
Created By : National TAB **Assigned To :** National TAB - Will Turnbough
Status : Open
Priority : High **Asset Tag :**
Originated Date : 04/30/2025 - David Nicolas Sanchez - National TAB

Project Issue File Details



04/30/2025



04-28-25 ALBERTSONS #991 PEORIA, AZ

Project Issue Information

Issue Name : AC-4 HIGH OA
Description : Unable to achieve design CFM. Manual damper set to lowest position. Minimum OA set to 974 CFM.
Created By : National TAB **Assigned To :** National TAB - Will Turnbough
Status : Open
Priority : Medium **Asset Tag :**
Originated Date : 04/29/2025 - David Nicolas Sanchez - National TAB

Project Issue File Details



04/29/2025



04-28-25 ALBERTSONS #991 PEORIA, AZ

Project Issue Information

Issue Name : EF-3 UNABLE TO MEET DESIGN AIRFLOW
Description : EF-3 was unable to meet design airflow. Unit was set to max position on speed potentiometer. Unable to further speed up the unit.
Created By : National TAB **Assigned To :** National TAB - Brianna Biggs
Status : Open
Priority : Urgent **Asset Tag :**
Originated Date : 04/30/2025 - David Nicolas Sanchez - National TAB



04-28-25 ALBERTSONS #991 PEORIA, AZ

Project Issue Information

Issue Name : EF-7 NOT FUNCTIONAL
Description : EF-7 is not functional. Unit is reading 0 AC volts. Unable to locate breaker for EF-7.
Created By : National TAB **Assigned To :** National TAB - Brianna Biggs
Status : Open
Priority : Urgent **Asset Tag :**
Originated Date : 04/30/2025 - David Nicolas Sanchez - National TAB

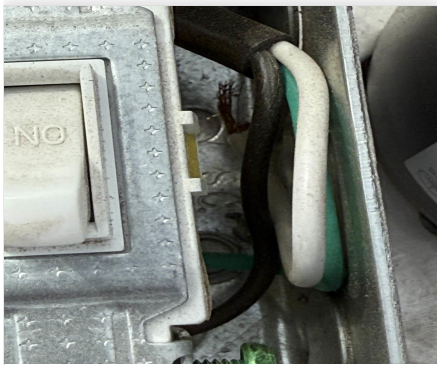


04-28-25 ALBERTSONS #991 PEORIA, AZ

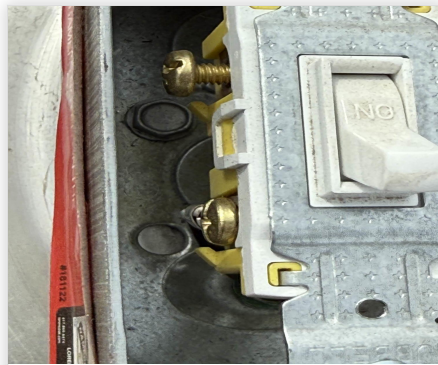
Project Issue Information

Issue Name : EF-9 NOT FUNCTIONAL
Description : EF-9 not functional. Unable to get unit to power on. Wires not installed correctly.
Created By : National TAB **Assigned To :** National TAB - Will Turnbough
Status : Open
Priority : Urgent **Asset Tag :**
Originated Date : 04/30/2025 - David Nicolas Sanchez - National TAB

Project Issue File Details



04/30/2025



04/30/2025



04-28-25 ALBERTSONS #991 PEORIA, AZ

Project Issue Information

Issue Name : HEF-1 MOTOR SHEAVE SEIZED
Description : HEF-1 motor sheave is seized, unable to slow down the unit to achieve design airflow. Recommend replacing motor sheave.
Created By : National TAB **Assigned To :** National TAB - Will Turnbough
Status : Open
Priority : High **Asset Tag :**
Originated Date : 04/30/2025 - David Nicolas Sanchez - National TAB

Project Issue File Details



04/30/2025

AIR BALANCE SCHEDULE

| UNIT | AREA SERVED | HVAC SUPPLY | | HVAC RETURN | | HVAC OUTDOOR | | OA % | | HOOD MAKE-UP | | HOOD EXHAUST | | GENERAL EXH. | |
|---------------|--------------------|-------------|--------|-------------|--------|--------------|--------|--------|--------|--------------|--------|--------------|--------|--------------|--------|
| | | DESIGN | ACTUAL | DESIGN | ACTUAL | DESIGN | ACTUAL | DESIGN | ACTUAL | DESIGN | ACTUAL | DESIGN | ACTUAL | DESIGN | ACTUAL |
| AHU-1 | | 33100 | 30685 | 33100 | 30685 | 0 | 0 | 0.0% | 0.0% | | | | | | |
| AC-1 | FRONT OFFICE | 1990 | 2102 | 1800 | 1822 | 190 | 280 | 9.5% | 13.3% | | | | | | |
| AC-2 | BAKERY | 2400 | 2534 | 2160 | 2300 | 240 | 234 | 10.0% | 9.2% | | | | | | |
| AC-3 | PHARMACY | 800 | 743 | 720 | 743 | 80 | 0 | 10.0% | 0.0% | | | | | | |
| AC-4 | LIQUOR | 4800 | 4565 | 4320 | 3591 | 480 | 974 | 10.0% | 21.3% | | | | | | |
| RTF-1 | FROZEN FOODS | | | | | | | | | 5000 | 5249 | | | | |
| HEF-1 | HOOD 1 | | | | | | | | | | | 2500 | 2505 | | |
| EF-3 | BAKERY RACK OVEN | | | | | | | | | | | | | 800 | 486 |
| EF-4 | RESTROOMS | | | | | | | | | | | | | 330 | 396 |
| EF-6 | ELECTRICAL ROOM | | | | | | | | | | | | | 500 | 537 |
| EF-7 | EMPLOYEE RESTROOMS | | | | | | | | | | | | | 180 | 0 |
| EF-9 | PHARMACY RESTROOM | | | | | | | | | | | | | 70 | 0 |
| TOTALS | | 9990 | 9944 | 9000 | 8456 | 990 | 1488 | | | 5000 | 5249 | 2500 | 2505 | 1880 | 1419 |

NET BUILDING AIRFLOW CALCULATION

| TOTALS | DESIGN | ACTUAL |
|--------------------|-------------|-------------|
| TOTAL OA | 5990 | 6737 |
| TOTAL EXHAUST | 4380 | 3924 |
| NET AIRFLOW | 1610 | 2813 |

| DOOR TESTED | BUILDING PRESSURE MEASUREMENTS (IN. H2O) |
|----------------|--|
| FRONT | |
| SIDE | |
| REAR | |
| AVERAGE | #DIV/0! |

FINAL CHECKS

- ACTUAL NET AIRFLOW COINCIDES WITH DESIGN:

- MEASURED PRESSURES COINCIDES WITH ACTUAL NET AIRFLOW:

- PRESSURE FALLS WITHIN IMC TOLERANCE OF +/-0.02" W.C.

NOTES:

CheckList List

- STEP 1: INITIAL SITE WALKTHRU
- STEP 2: UNIT DATA AND EVAL
- STEP 3: TEST, ADJUST AND BALANCE
- STEP 4: FINAL TESTS



04-28-25 ALBERTSONS #991 PEORIA, AZ

CheckList Information

Name : STEP 1: INITIAL SITE WALKTHRU **Status :** Not Completed

Assigned Organization : National TAB **Asset :**

Requesting Organization : National TAB

Created Date : 04/29/2025 - Nicole Seever - National TAB

CheckList Item Details

INITIAL SITE WALKTHROUGH

All diffusers and grilles are installed and match design?

Comment:

All hood filters installed and accounted for?

Comment:

Hoods are wired and have power?

Comment:

Hood is free of alarms?

Comment:

Thermostats have power?

Comment:

Have trades/general contractor been notified about any issues and are they created on FaciliBuild?

Comment:

Comment:

Unit free of noticeable noise and vibration

Comment:

EF's

Rotation is correct?

Comment:

Belts are tight?

Comment:

Grease cup installed on hood fan?

Comment:

Hinge kit installed installed on hood fan?

Comment:

Lean fan back. Is grease duct installation adequate and is duct ran all the way to the base of the fan?

Comment:

Flex conduit is long enough so that fan can be completely tilted back?

Comment:

There is no major leakage around base of fan?

Comment:

Is the motor operating below the motor FLA rating?

Comment:

For restroom fan(s) is the back draft damper installed and can it fully open?

Comment:

Unit free of noticeable noise and vibration?

Comment:

MUA

Rotation is correct?

Comment:

Gas piping is installed and valves are in on position?

Comment:

Heater tested and is functional?

Comment:

Internal motorized damper is fully opening?

Comment:

Motor is operating below the FLA rating?

Comment:

Unit free of noticeable noise and vibration?

Comment:

HOODS

Kitchen equipment installed in proper places?

Comment:

Can kitchen equipment be turned on for final smoke test?

Comment:

DOCUMENTATION

Have trades/general contractor been notified about any issues and are they created on FaciliBuild?

Comment:



04-28-25 ALBERTSONS #991 PEORIA, AZ

CheckList Information

Name : STEP 3: TEST, ADJUST AND BALANCE **Status :** Not Completed

Assigned Organization : National TAB **Asset :**

Requesting Organization : National TAB

Created Date : 04/29/2025 - Nicole Seever - National TAB

CheckList Item Details

TEST, ADJUST, AND BALANCE ALL EQUIPMENT:

DURING TESTING MAKE NOTE OF THE FOLLOWING:

Is space free of drafting?

Comment:

Is space comfortable in all areas?

Comment:

Is the space free of ventilation noise?

Comment:

If deviations from design were necessary to resolve 1-3 what were they? Otherwise put "NA".

Comment:



04-28-25 ALBERTSONS #991 PEORIA, AZ

CheckList Information

Name : STEP 4: FINAL TESTS **Status :** Not Completed
Assigned Organization : National TAB **Asset :**
Requesting Organization : National TAB
Created Date : 04/29/2025 - Nicole Seever - National TAB

CheckList Item Details

FINAL TESTS

HOOD CAPTURE TEST

List equipment turned on for testing

Comment:

List smoke candle type used

Comment:

Smoke test capture - Perimeter of hood

Comment:

Smoke test capture - Top of cooking surface

Comment:

WITNESS

Date test was completed

Comment:

TAB tech name / Firm

Comment:

Site super name / Firm

Comment:

Owner representative name / Firm (if Applicable)

Comment:

Building pressure at front & back doors (All Systems On)

Comment:

ADDITIONAL

Do actual net building airflow, design net building airflow, and pressure coincide? If not why? (All three should either be positive or negative)

Comment:

Thermostats are programmed?

Comment:

National TAB

Project: 04-28-25 ALBERTSONS #991 PEORIA, AZ

System/Unit: AHU/RTU



Asset: AC1

AREA:FRONT OFFICE

| Unit Data | | |
|---------------------|----------|------------|
| | Design | Actual |
| MFG | ICP | ICP |
| Serial Num | - | C174279980 |
| Model Num | RGX060HL | RGX060HLCA |
| Type | AC | AC |
| Configuration | VERTICAL | VERTICAL |
| Num OA Filters 1 | - | 1 |
| OA Filter Size 1 | - | 24.5X8 |
| Num Final Filter 1 | - | 4 |
| Final Filter Size 1 | - | 15.5X15.5 |
| Num Final Filter 2 | - | |
| Final Filter Size 2 | - | |

| Motor Data | | |
|----------------|--------|----------|
| | Design | Actual |
| Motor MFG | - | MARATHON |
| Frame | - | 56HZ |
| Horsepower | - | NL |
| Motor Rpm | - | 1725 |
| Phase | - | 3 |
| Rated Voltage | - | 208 |
| Rated Amperage | - | 8.8 |

| Drive Data | |
|--------------------|--------------|
| | Actual |
| Motor Sheave Size | 1VP60BB |
| Motor Bore Size | 7/8 |
| Motor Sheave SetPt | 5 TURNS OPEN |
| Fan Sheave Size | AK49 |
| Fan Sheave Bore | 5/8 |
| Belt CL Distance | 14" |
| Num of Belts | 1 |
| Belt Size | A40 |
| Belt Alignment | VERIFIED |

| Test Data | | |
|------------------------|--------|----------------|
| | Design | Actual |
| SF CFM | 1990 | 2102 |
| SF RPM | - | 861 |
| RA CFM | 1800 | 1814 |
| OA CFM | 190 | 288 |
| RL Voltage | - | 208/208/207 |
| RL Amperage | - | 4.12/4.48/4.28 |
| SF Rotation | - | CW |
| SF System SetPt | - | N/A |
| RA Damper Position | - | N/A |
| Min OA Damper Position | - | N/A |
| Min OA Damper Type | - | N/A |
| OA Enthalpy Setpt | - | N/A |

| Performance Data | | |
|------------------|--------|--------|
| | Design | Actual |
| MA Plenum SP | - | -0.17" |
| Fan Suction SP | - | -0.34" |
| Fan Discharge SP | - | 0.27" |
| Total ESP | - | 0.44" |
| Fan Total SP | - | 0.61" |

| General | |
|----------------------------|--------|
| | Actual |
| Fan Rotation Correct | YES |
| Unit Filters Clean | YES |
| Condensate Drain Installed | YES |

Completed By: David Nicolas Sanchez on 04/29/2025

Unit Data - PHOTO LOG



05/06/2025

National TAB

Project: 04-28-25 ALBERTSONS #991 PEORIA, AZ

System/Unit: AHU/RTU



Asset: AC2

AREA:BAKERY

| Unit Data | | |
|---------------------|------------|--------------------|
| | Design | Actual |
| MFG | CARRIER | CARRIER |
| Serial Num | - | 1024C10095 |
| Model Num | 50DK506216 | 48FCEM07A2M5A6U1F0 |
| Type | AC | AC |
| Configuration | VERTICAL | VERTICAL |
| Num OA Filters 1 | - | 1 |
| OA Filter Size 1 | - | |
| Num Final Filter 1 | - | 4 |
| Final Filter Size 1 | - | 16X16X2 |
| Num Final Filter 2 | - | |
| Final Filter Size 2 | - | |

| Motor Data | | |
|----------------|--------|--------|
| | Design | Actual |
| Motor MFG | - | NL |
| Frame | - | NL |
| Horsepower | - | NL |
| Motor Rpm | - | NL |
| Phase | - | 3 |
| Rated Voltage | - | 208 |
| Rated Amperage | - | 5.5 |

| Drive Data | |
|--------------------|--------|
| | Actual |
| Motor Sheave Size | DD |
| Motor Bore Size | DD |
| Motor Sheave SetPt | DD |
| Fan Sheave Size | DD |
| Fan Sheave Bore | DD |
| Belt CL Distance | DD |
| Num of Belts | DD |
| Belt Size | DD |
| Belt Alignment | DD |

| Test Data | | |
|------------------------|--------|----------------|
| | Design | Actual |
| SF CFM | 2400 | 2534 |
| SF RPM | - | 2434 |
| RA CFM | - | 2300 |
| OA CFM | 240 | 234 |
| RL Voltage | - | 206/207/205 |
| RL Amperage | - | 4.07/4.07/4.12 |
| SF Rotation | - | CCW |
| SF System SetPt | - | C |
| RA Damper Position | - | 7.50V |
| Min OA Damper Position | - | 2.50V |
| Min OA Damper Type | - | ECONOMIZER |
| OA Enthalpy Setpt | - | N/A |

| Performance Data | | |
|------------------|--------|--------|
| | Design | Actual |
| MA Plenum SP | - | -1.03" |
| Fan Suction SP | - | -1.25" |
| Fan Discharge SP | - | 0.23" |
| Total ESP | - | 1.26" |
| Fan Total SP | - | 1.48" |

| General | |
|----------------------------|--------|
| | Actual |
| Fan Rotation Correct | YES |
| Unit Filters Clean | YES |
| Condensate Drain Installed | YES |

Completed By: David Nicolas Sanchez on 04/29/2025

Unit Data - PHOTO LOG



05/06/2025

National TAB

Project: 04-28-25 ALBERTSONS #991 PEORIA, AZ

System/Unit: AHU/RTU



Asset: AC3

AREA:PHARMACY

| Unit Data | | |
|---------------------|------------------|------------------|
| | Design | Actual |
| MFG | BRYANT | BRYANT |
| Serial Num | - | 1718C08969 |
| Model Num | 607CNXC24000AATP | 607CNXC24000AATP |
| Type | AC | AC |
| Configuration | VERTICAL | VERTICAL |
| Num OA Filters 1 | - | N/A |
| OA Filter Size 1 | - | N/A |
| Num Final Filter 1 | - | 1 |
| Final Filter Size 1 | - | 22X21.5" |
| Num Final Filter 2 | - | |
| Final Filter Size 2 | - | |

| Motor Data | | |
|----------------|--------|--------|
| | Design | Actual |
| Motor MFG | - | NL |
| Frame | - | NL |
| Horsepower | - | 1/2 |
| Motor Rpm | - | NL |
| Phase | - | 1 |
| Rated Voltage | - | 208 |
| Rated Amperage | - | 3.8 |

| Drive Data | |
|--------------------|--------|
| | Actual |
| Motor Sheave Size | DD |
| Motor Bore Size | DD |
| Motor Sheave SetPt | DD |
| Fan Sheave Size | DD |
| Fan Sheave Bore | DD |
| Belt CL Distance | DD |
| Num of Belts | DD |
| Belt Size | DD |
| Belt Alignment | DD |

| Test Data | | |
|------------------------|--------|--------|
| | Design | Actual |
| SF CFM | 800 | 743 |
| SF RPM | 720 | DD |
| RA CFM | 720 | 743 |
| OA CFM | 80 | 0 |
| RL Voltage | - | 208 |
| RL Amperage | - | 0.90 |
| SF Rotation | - | CCW |
| SF System SetPt | - | [1] |
| RA Damper Position | - | N/A |
| Min OA Damper Position | - | N/A |
| Min OA Damper Type | - | N/A |
| OA Enthalpy Setpt | - | N/A |

| Performance Data | | |
|------------------|--------|--------|
| | Design | Actual |
| MA Plenum SP | - | -0.09" |
| Fan Suction SP | - | -0.26" |
| Fan Discharge SP | - | 0.07" |
| Total ESP | - | 0.16" |
| Fan Total SP | - | 0.33" |

| General | |
|----------------------------|--------|
| | Actual |
| Fan Rotation Correct | YES |
| Unit Filters Clean | YES |
| Condensate Drain Installed | YES |

Completed By: David Nicolas Sanchez on 04/29/2025

Unit Data - PHOTO LOG



05/06/2025

National TAB

Project: 04-28-25 ALBERTSONS #991 PEORIA, AZ

System/Unit: AHU/RTU



Asset: AC4

AREA:LIQUOR

| Unit Data | | |
|---------------------|------------|------------|
| | Design | Actual |
| MFG | CARRIER | CARRIER |
| Serial Num | - | 4917P35237 |
| Model Num | 48TCDD12A2 | 48TCDD12A2 |
| Type | AC | AC |
| Configuration | VERTICAL | VERTICAL |
| Num OA Filters 1 | - | N/A |
| OA Filter Size 1 | - | N/A |
| Num Final Filter 1 | - | 4 |
| Final Filter Size 1 | - | 20X20X2 |
| Num Final Filter 2 | - | |
| Final Filter Size 2 | - | |

| Motor Data | | |
|----------------|--------|----------|
| | Design | Actual |
| Motor MFG | - | MARATHON |
| Frame | - | 56HZ |
| Horsepower | - | NL |
| Motor Rpm | - | 1725 |
| Phase | - | 3 |
| Rated Voltage | - | 208 |
| Rated Amperage | - | 10.6 |

| Drive Data | |
|--------------------|----------|
| | Actual |
| Motor Sheave Size | 4 5/8" |
| Motor Bore Size | 7/8" |
| Motor Sheave SetPt | NA |
| Fan Sheave Size | AFD74 |
| Fan Sheave Bore | 1" |
| Belt CL Distance | 17" |
| Num of Belts | 1 |
| Belt Size | A-64 |
| Belt Alignment | VERIFIED |

| Test Data | | |
|------------------------|--------|----------------|
| | Design | Actual |
| SF CFM | 4800 | 4565 |
| SF RPM | - | 841 |
| RA CFM | 4320 | 3590 |
| OA CFM | 480 | 974 |
| RL Voltage | - | 205/206/208 |
| RL Amperage | - | 6.04/6.05/5.79 |
| SF Rotation | - | CCW |
| SF System SetPt | - | N/A |
| RA Damper Position | - | N/A |
| Min OA Damper Position | - | 25% |
| Min OA Damper Type | - | MANUAL |
| OA Enthalpy Setpt | - | N/A |

| Performance Data | | |
|------------------|--------|--------|
| | Design | Actual |
| MA Plenum SP | - | -0.48" |
| Fan Suction SP | - | -0.86" |
| Fan Discharge SP | - | 0.46" |
| Total ESP | - | 0.94" |
| Fan Total SP | - | 1.32" |

| General | |
|----------------------------|--------|
| | Actual |
| Fan Rotation Correct | YES |
| Unit Filters Clean | YES |
| Condensate Drain Installed | YES |

Completed By: David Nicolas Sanchez on 04/29/2025

Notes:
UNABLE TO CHECK MOTOR SHEAVE SET-POINT. PULLEY SEIZED.

Written By: David Nicolas Sanchez on 04/29/2025

Unit Data - PHOTO LOG



05/06/2025

National TAB

Project: 04-28-25 ALBERTSONS #991 PEORIA, AZ

System/Unit: AHU/RTU



Asset: AHU1

AREA:

| Unit Data | | |
|---------------------|--------|-----------|
| | Design | Actual |
| MFG | NA | BOHN |
| Serial Num | - | D99H06660 |
| Model Num | NA | HCL65AF |
| Type | - | AHU |
| Configuration | - | VERTICAL |
| Num OA Filters 1 | - | 8 |
| OA Filter Size 1 | - | 16X25X1 |
| Num Final Filter 1 | - | 24 |
| Final Filter Size 1 | - | 24X24X2 |
| Num Final Filter 2 | - | |
| Final Filter Size 2 | - | |

| Motor Data | | |
|----------------|--------|----------|
| | Design | Actual |
| Motor MFG | - | MARATHON |
| Frame | - | 284T |
| Horsepower | - | 25 |
| Motor Rpm | - | 1770 |
| Phase | - | 3 |
| Rated Voltage | - | 230/460 |
| Rated Amperage | - | 60/30 |

| Drive Data | |
|--------------------|----------|
| | Actual |
| Motor Sheave Size | NA |
| Motor Bore Size | NA |
| Motor Sheave SetPt | NA |
| Fan Sheave Size | 13 1/2" |
| Fan Sheave Bore | 2 5/8" |
| Belt CL Distance | 31" |
| Num of Belts | 3 |
| Belt Size | BX93 |
| Belt Alignment | VERIFIED |

| Test Data | | |
|------------------------|--------|----------|
| | Design | Actual |
| SF CFM | - | 30685 |
| SF RPM | - | NA |
| RA CFM | - | 30685 |
| OA CFM | 0 | 0 |
| RL Voltage | - | 208@VFD |
| RL Amperage | - | 46.8@VFD |
| SF Rotation | - | CCW |
| SF System SetPt | - | 59.8HZ |
| RA Damper Position | - | 100% |
| Min OA Damper Position | - | 0 |
| Min OA Damper Type | - | MANUAL |
| OA Enthalpy Setpt | - | N/A |

| Performance Data | | |
|------------------|--------|--------|
| | Design | Actual |
| MA Plenum SP | - | -0.08" |
| Fan Suction SP | - | -0.58" |
| Fan Discharge SP | - | 2.04" |
| Total ESP | - | 2.12" |
| Fan Total SP | - | 2.62" |

| General | |
|----------------------------|--------|
| | Actual |
| Fan Rotation Correct | YES |
| Unit Filters Clean | YES |
| Condensate Drain Installed | YES |

Completed By: David Nicolas Sanchez on 04/30/2025

Notes:
OA supply fan not functional. Unable to set OA to design CFM.

Written By: David Nicolas Sanchez on 04/29/2025

Unit Data - PHOTO LOG



05/06/2025

National TAB

Project: 04-28-25 ALBERTSONS #991 PEORIA, AZ

System/Unit: FAN - Exhaust



Asset: EF3

AREA:BAKERY

| Unit Data | | |
|---------------|--------|------------|
| | Design | Actual |
| MFG | NA | COOK |
| Model Num | NA | 165VX17D |
| Serial Num | - | 296SK85731 |
| Type | - | UPBLAST |
| Configuration | - | VERTICAL |

| Motor Data | | |
|------------------|--------|-----------|
| | Design | Actual |
| Motor MFG | - | VARI-FLOW |
| Frame | - | NL |
| Horsepower | - | 1/4 |
| Motor Rpm | - | 1376 |
| Phase | - | 1 |
| Voltage (rated) | - | 120 |
| Amperage (rated) | - | 3.2 |
| Service Factor | - | NL |

| Test Data | | |
|------------------|--------|--------|
| | Design | Actual |
| CFM | 800 | 476 |
| Fan RPM | - | DD |
| Fan Rotation | - | CCW |
| Motor RPM | - | DD |
| System SetPt | - | 100 |
| RL Voltage | - | 119 |
| RL Amperage | - | NA |
| Total ESP | - | NA |
| Fan Inlet SP | - | NA |
| Fan Discharge SP | - | NA |

Completed By: David Nicolas Sanchez on 04/30/2025

Unit Data - PHOTO LOG



05/06/2025

National TAB

Project: 04-28-25 ALBERTSONS #991 PEORIA, AZ

System/Unit: FAN - Exhaust



Asset: EF4

AREA:RESTROOMS

| Unit Data | | |
|---------------|--------|------------|
| | Design | Actual |
| MFG | NA | COOK |
| Model Num | NA | 90C17DM |
| Serial Num | - | 296PK85731 |
| Type | - | DOWNBLAST |
| Configuration | - | VERTICAL |

| Test Data | | |
|------------------|--------|------------------------|
| | Design | Actual |
| CFM | 330 | 396 |
| Fan RPM | - | DD |
| Fan Rotation | - | CW |
| Motor RPM | - | DD |
| System SetPt | - | 3/4 TURN POTENTIOMETER |
| RL Voltage | - | 120 |
| RL Amperage | - | NA |
| Total ESP | - | 0.18" |
| Fan Inlet SP | - | -0.18" |
| Fan Discharge SP | - | ATMS |

| Motor Data | | |
|------------------|--------|-----------|
| | Design | Actual |
| Motor MFG | - | VARI-FLOW |
| Frame | - | NL |
| Horsepower | - | 1/8 |
| Motor Rpm | - | 1725 |
| Phase | - | 1 |
| Voltage (rated) | - | 120 |
| Amperage (rated) | - | 1.9 |
| Service Factor | - | NL |

Completed By: David Nicolas Sanchez on 04/30/2025

Unit Data - PHOTO LOG



05/06/2025

National TAB

Project: 04-28-25 ALBERTSONS #991 PEORIA, AZ

System/Unit: FAN - Exhaust



Asset: EF6

AREA:ELECTRICAL ROOM

| Unit Data | | |
|---------------|--------|-------------|
| | Design | Actual |
| MFG | NA | COOK |
| Model Num | NA | 120C17D0R81 |
| Serial Num | - | 296SK85731 |
| Type | - | DOWNBLAST |
| Configuration | - | VERTICAL |

| Test Data | | |
|------------------|--------|--------|
| | Design | Actual |
| CFM | 500 | 537 |
| Fan RPM | - | 1139 |
| Fan Rotation | - | CCW |
| Motor RPM | - | 1139 |
| System SetPt | - | 78 |
| RL Voltage | - | 119 |
| RL Amperage | - | NA |
| Total ESP | - | 0.15" |
| Fan Inlet SP | - | -0.15" |
| Fan Discharge SP | - | ATMS |

| Motor Data | | |
|------------------|--------|-----------|
| | Design | Actual |
| Motor MFG | - | VARI-FLOW |
| Frame | - | NL |
| Horsepower | - | 1/6 |
| Motor Rpm | - | 1409 |
| Phase | - | 1 |
| Voltage (rated) | - | 120 |
| Amperage (rated) | - | 2.4 |
| Service Factor | - | NL |

Completed By: David Nicolas Sanchez on 04/30/2025

Unit Data - PHOTO LOG



05/06/2025

National TAB

Project: 04-28-25 ALBERTSONS #991 PEORIA, AZ

System/Unit: FAN - Exhaust



Asset: EF7

AREA: Restroom

| Unit Data | | |
|---------------|--------|---------------|
| | Design | Actual |
| MFG | NA | COOK |
| Model Num | NA | 101C17D0R60VF |
| Serial Num | - | 296PK85731 |
| Type | - | DOWNLBLAST |
| Configuration | - | VERTICAL |

| Test Data | | |
|------------------|--------|--------|
| | Design | Actual |
| CFM | 180 | 0 |
| Fan RPM | - | DD |
| Fan Rotation | - | CCW |
| Motor RPM | - | DD |
| System SetPt | - | 100 |
| RL Voltage | - | 0 |
| RL Amperage | - | 0 |
| Total ESP | - | 0 |
| Fan Inlet SP | - | 0 |
| Fan Discharge SP | - | 0 |

| Motor Data | | |
|------------------|--------|--------------|
| | Design | Actual |
| Motor MFG | - | VARI-GREENER |
| Frame | - | NL |
| Horsepower | - | 0.167 |
| Motor Rpm | - | 1725 |
| Phase | - | 1 |
| Voltage (rated) | - | 115 |
| Amperage (rated) | - | 2.4 |
| Service Factor | - | NL |

Completed By: David Nicolas Sanchez on 04/30/2025

Unit Data - PHOTO LOG



05/06/2025

National TAB

Project: 04-28-25 ALBERTSONS #991 PEORIA, AZ

System/Unit: FAN - Exhaust



Asset: EF9

AREA:PHARMACY RR

| Unit Data | | |
|---------------|--------|------------|
| | Design | Actual |
| MFG | NA | COOK |
| Model Num | NA | 70C17DL |
| Serial Num | - | 296PK85731 |
| Type | - | DOWNBLAST |
| Configuration | - | VERTICAL |

| Motor Data | | |
|------------------|--------|--------|
| | Design | Actual |
| Motor MFG | - | JAKEL |
| Frame | - | NL |
| Horsepower | - | NL |
| Motor Rpm | - | 1800 |
| Phase | - | 1 |
| Voltage (rated) | - | 115 |
| Amperage (rated) | - | 1.1 |
| Service Factor | - | NL |

| Test Data | | |
|------------------|--------|--------------|
| | Design | Actual |
| CFM | - | 0 |
| Fan RPM | - | DD |
| Fan Rotation | - | CW |
| Motor RPM | - | DD |
| System SetPt | - | SINGLE SPEED |
| RL Voltage | - | 0 |
| RL Amperage | - | 0 |
| Total ESP | - | 0 |
| Fan Inlet SP | - | 0 |
| Fan Discharge SP | - | ATMS |

Completed By: David Nicolas Sanchez on 04/30/2025

National TAB

Project: 04-28-25 ALBERTSONS #991 PEORIA, AZ

System/Unit: FAN - Exhaust



Asset: HEF1

AREA:DELI HOOD

| Unit Data | | |
|---------------|--------|---------------|
| | Design | Actual |
| MFG | NA | GREENHECK |
| Model Num | NA | CUDE-200-10-G |
| Serial Num | - | 99113143 |
| Type | - | UPBLAST |
| Configuration | - | VERTICAL |

| Test Data | | |
|------------------|--------|--------------|
| | Design | Actual |
| CFM | 2500 | 3505 |
| Fan RPM | - | 1273 |
| Fan Rotation | - | CCW |
| Motor RPM | - | 1771 |
| System SetPt | - | 0 TURNS OPEN |
| RL Voltage | - | NA |
| RL Amperage | - | NA |
| Total ESP | - | 0.32" |
| Fan Inlet SP | - | -0.32" |
| Fan Discharge SP | - | ATMS |

| Motor Data | | |
|------------------|--------|----------|
| | Design | Actual |
| Motor MFG | - | MARATHON |
| Frame | - | NL |
| Horsepower | - | 1 |
| Motor Rpm | - | 1725 |
| Phase | - | NL |
| Voltage (rated) | - | 208 |
| Amperage (rated) | - | 3.4 |
| Service Factor | - | 1.15 |

Completed By: David Nicolas Sanchez on 04/30/2025

Unit Data - PHOTO LOG



05/06/2025

National TAB

Project: 04-28-25 ALBERTSONS #991 PEORIA, AZ

System/Unit: FAN - Exhaust



Asset: HEF2

AREA:SUSHI

| Unit Data | | |
|---------------|--------|--------|
| | Design | Actual |
| MFG | NA | NA |
| Model Num | NA | NA |
| Serial Num | - | NA |
| Type | - | NA |
| Configuration | - | NA |

| Motor Data | | |
|------------------|--------|--------|
| | Design | Actual |
| Motor MFG | - | NA |
| Frame | - | NA |
| Horsepower | - | NA |
| Motor Rpm | - | NA |
| Phase | - | NA |
| Voltage (rated) | - | NA |
| Amperage (rated) | - | NA |
| Service Factor | - | NA |

| Test Data | | |
|------------------|--------|--------|
| | Design | Actual |
| CFM | - | NA |
| Fan RPM | - | NA |
| Fan Rotation | - | NA |
| Motor RPM | - | NA |
| System SetPt | - | NA |
| RL Voltage | - | NA |
| RL Amperage | - | NA |
| Total ESP | - | NA |
| Fan Inlet SP | - | NA |
| Fan Discharge SP | - | NA |

Completed By: David Nicolas Sanchez on 04/30/2025

Notes:
UNIT HAS BEEN ABANDONED.

Written By: David Nicolas Sanchez on 04/30/2025

National TAB

Project: 04-28-25 ALBERTSONS #991 PEORIA, AZ

System/Unit: FAN - Supply



Asset: RTF1

AREA:FROZEN FOOD

| Unit Data | | |
|---------------|--------|--------------------|
| | Design | Actual |
| MFG | NA | ADDISON |
| Model Num | NA | PROA420C4J2DABFAE1 |
| Serial Num | - | 231202801001 |
| Type | - | DOAS |
| Configuration | - | VERTICAL |

| Motor Data | | |
|------------------|--------|--------|
| | Design | Actual |
| Motor MFG | - | NL |
| Frame | - | NL |
| Horsepower | - | 5 |
| Motor Rpm | - | NL |
| Phase | - | 3 |
| Voltage (rated) | - | 208 |
| Amperage (rated) | - | 14.0 |
| Service Factor | - | NL |

| Gas Heat | | |
|--------------------------|--------|--------|
| | Design | Actual |
| Heater Operates (y/n) | - | Y |
| Flame Status (pass/fail) | - | PASS |

| Test Data | | |
|------------------|--------|----------------|
| | Design | Actual |
| CFM | 5000 | 5249 |
| SF RPM | - | DD |
| Motor RPM | - | DD |
| SF System SetPt | - | 54.9HZ |
| RL Voltage | - | 209/210/209 |
| RL Amperage | - | 6.90/6.95/7.07 |
| Total ESP | - | NA |
| Fan Discharge SP | - | NA |

| General | |
|----------------------|--------|
| | Actual |
| Fan Rotation Correct | YES |

Completed By: David Nicolas Sanchez on 04/30/2025

Unit Data - PHOTO LOG



05/06/2025

National TAB

Project: 04-28-25 ALBERTSONS #991 PEORIA, AZ

System/Unit: Kitchen Hood Type I



Asset: HD1

AREA:DELI

| Unit Data | | |
|----------------------|--------|------------------|
| | Design | Actual |
| MFG | NA | NL |
| Model Num | NA | NL |
| Job / Serial Num | - | NL |
| Type | - | TYPE 1 CANAPY |
| Hood length | - | 120" |
| Hood Width | - | 56" |
| Supply Plenum Type | - | N/A |
| Supply Plenum Width | - | N/A |
| Supply Plenum Length | - | N/A |

| Test Data Exhaust | | |
|--------------------------|--------|---------|
| | Design | Actual |
| Filter Type | - | BAFFLED |
| Filter Size 1 | - | 20X20 |
| Filter Size 2 | - | |
| Filter Qty 1 | - | 6 |
| Filter Qty 2 | - | |
| Filter AK factor size 1 | - | 2.68 |
| Filters AK factor size 2 | - | |
| Filter Total AK Area | - | 16.08 |
| Filter1 FPM | - | 172 |
| Filter2 FPM | - | 179 |
| Filter3 FPM | - | 229 |
| Filter4 FPM | - | 271 |
| Filter5 FPM | - | 229 |
| Filter6 FPM | - | 228 |
| Filter7 FPM | - | |
| Filter8 FPM | - | |
| Filter9 FPM | - | |
| Filter10 FPM | - | |
| Filter11 FPM | - | |
| Filter12 FPM | - | |
| Filter Ave FPM(corr) | - | 218 |
| CFM | 2500 | 3505 |

| Cooking Equipment | |
|-------------------|--------|
| | Actual |
| Item 1 | FRYER |
| Item 2 | OVEN |
| Item 3 | |
| Item 4 | |
| Item 5 | |

| Test Data Supply | | |
|------------------|--------|--------|
| | Design | Actual |
| Total Area | - | |
| Kv factor (Vel) | - | |
| Num of Readings | - | |
| Reading1 FPM | - | |
| Reading2 FPM | - | |
| Reading3 FPM | - | |
| Reading4 FPM | - | |
| Reading5 FPM | - | |
| Reading6 FPM | - | |
| Reading7 FPM | - | |
| Reading8 FPM | - | |
| Reading9 FPM | - | |
| Reading10 FPM | - | |
| Reading11 FPM | - | |
| Reading12 FPM | - | |
| Reading13 FPM | - | |
| Reading14 FPM | - | |
| Ave FPM(corr) | - | |
| CFM | - | |

Completed By: David Nicolas Sanchez on 04/30/2025

Unit Data - PHOTO LOG



05/06/2025

National TAB

Project: 04-28-25 ALBERTSONS #991 PEORIA, AZ

System/Unit: Kitchen Hood Type I



Asset: HD2

AREA:

| Unit Data | | |
|------------------|--------|------------------|
| | Design | Actual |
| MFG | NA | LBC |
| Model Num | NA | NL |
| Job / Serial Num | - | NL |
| Type | - | TYPE 1 CANAPY |
| Hood length | - | 72" |
| Hood Width | - | 32" |

| Test Data Exhaust | | |
|--------------------------|--------|---------|
| | Design | Actual |
| Filter Type | - | BAFFLED |
| Filter Size 1 | - | 16X16 |
| Filter Size 2 | - | |
| Filter Qty 1 | - | 2 |
| Filter Qty 2 | - | |
| Filter AK factor size 1 | - | 1.62 |
| Filters AK factor size 2 | - | |
| Filter Total AK Area | - | 3.24 |
| Filter1 FPM | - | 140 |
| Filter2 FPM | - | 154 |
| Filter3 FPM | - | |
| Filter4 FPM | - | |
| Filter5 FPM | - | |
| Filter6 FPM | - | |
| Filter7 FPM | - | |
| Filter8 FPM | - | |
| Filter9 FPM | - | |
| Filter10 FPM | - | |
| Filter11 FPM | - | |
| Filter12 FPM | - | |
| Filter Ave FPM(corr) | - | 147 |
| CFM | 800 | 476 |

| Cooking Equipment | |
|-------------------|--------|
| | Actual |
| Item 1 | OVEN |
| Item 2 | |

Completed By: David Nicolas Sanchez on 04/30/2025

Notes:
HOOD HAS BEEN ABANDONED.

Written By: David Nicolas Sanchez on 04/30/2025

Unit Data - PHOTO LOG



05/06/2025

