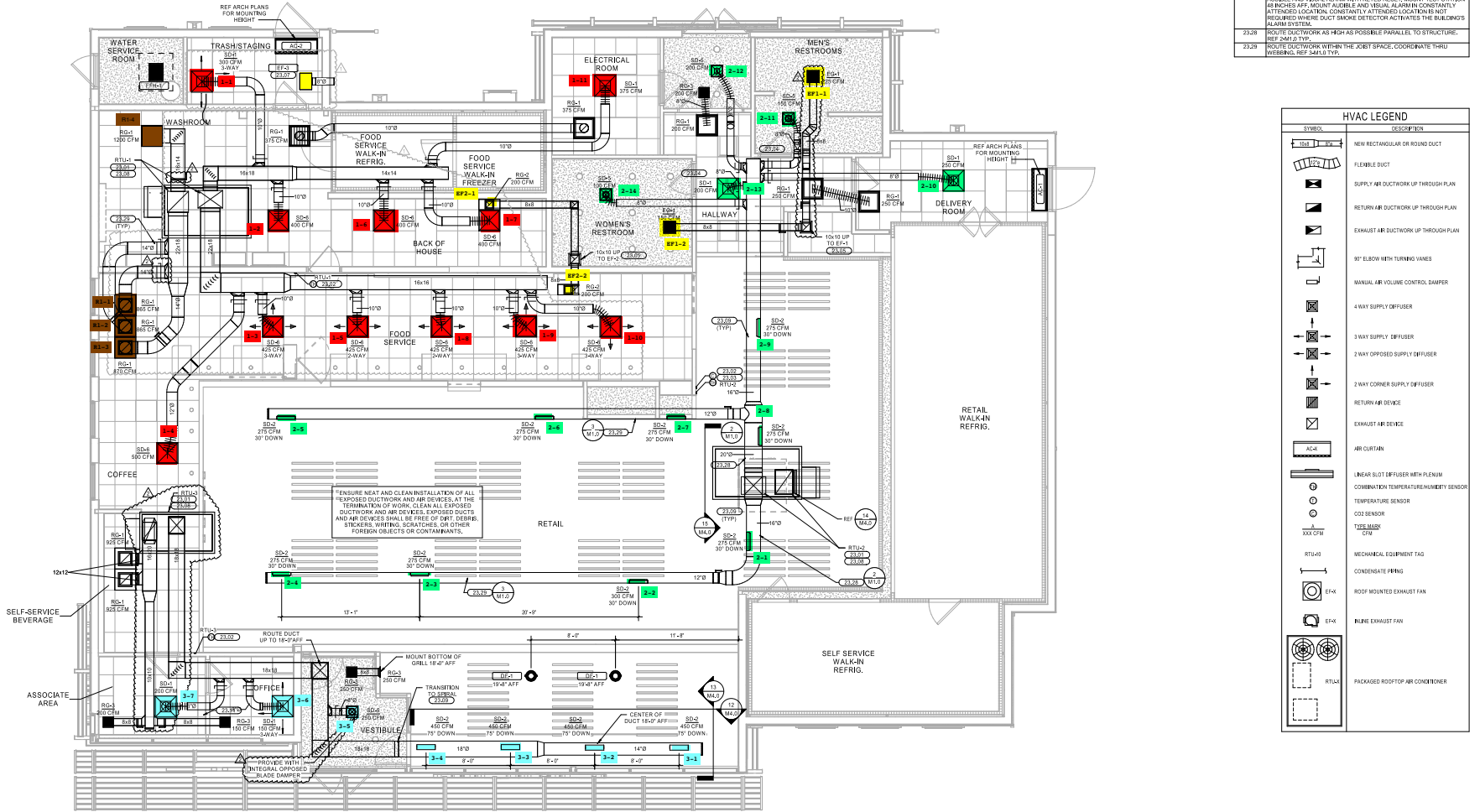


2 EXPOSED DUCT SUPPORT AND GRILLE
M/S

3 EXPOSED DUCT SUPPORT AND GRILLE
M/S



1 HVAC FLOOR PLAN
1/4" = 1'-0"

KEYNOTES	
2307	SUPPLY AND RETURN DUCT UP TO RTU ON ROOF. TRANSITION AS REQUIRED. FIELD VERIFY DUCT ROUTING PRIOR TO FABRICATION. PROVIDE FLEX CONNECTION FROM ROOF TO ISOLATION.
2302	MOUNT REMOTE TEMPERATURE/HUMIDITY SENSOR IN AREA SHOWN AT 8' AFF. COORDINATE DUCT LOCATION WITH AIR RYANV CONTRACTOR. THE ENTIRE CONTROL SYSTEM SHALL BE PROVIDED COMPLETE IN EVERY RESPECT BY THE MECHANICAL CONTRACTOR.
2303	WALL MOUNTED CO2 SENSOR TO RTU-2. SENSOR TO MONITOR CO2 LEVELS THROUGH REMOTE BMS. SENSOR BY WAWA BMS SENSOR.
2304	UNDERBILT DOOR 1 FOR AIR PASSAGE.
2306	EXHAUST DUCT ROUTED TO FAN ROOM. COORDINATE ROUTING OF DUCT WITH ALL DISCIPLINES. PROVIDE TRANSITIONS AND FITTINGS AS REQUIRED.
2307	PROVIDE A CABINET STYLE EXHAUST FAN. EXHAUST DUCT SHALL BE GALVANNEZED STEEL. PROVIDE REMOVAL VENT WITH SCREEN AND FLAPPER DAMPER. CROWN MODEL 340 OR EQUAL. EXHAUST FAN SHALL MAINTAIN 10' CLEARANCE FOR AN OUTSIDE AIR RETAIN. MUST MEET LOCAL CODE REQUIREMENTS. FIELD VERIFY ALL ROUTING AND REQUIREMENTS PRIOR TO BE. ALL PENETRATION WEATHER TIGHT, PREHANG VENT COVER TO MATCH MTD.
2308	FIELD ON TYPICAL DETECTOR TO SMOKE DETECTORS FOR SUPPLY AND RETURN WITH AUXILIARY CONTACTS AS SHOWN. UPON ACTIVATION, THE SMOKE DETECTOR SHALL SHUT DOWN THE AIR DISTRIBUTION SYSTEM TO WHICH IT IS CONNECTED AND ACTIVATE A VIBRATE AND AUDIBLE SUPERSONIC SIGNAL AT A CONSTANTY. DETECTORS SHALL ALSO BE FURNISHED WITH WALL MOUNTED REMOTE TEST STATION WITH REMOTE TEST KEY. REMOTE TEST STATION SIGNAL SHALL BE LED TYPE WITH AUDIBLE BEEPING ALERT.
2309	PROVIDE WALL AIR FLOW'S DOUBLE-WALL INSULATED SPIRAL DUCT OR EQUAL. INCL. 1" INSUL. REFERENCE COMPANY CONNECTIONS. FIELD VERIFY DETECTOR TO SMOKE DETECTOR. AIR TYPE FLANGE-TO-FLANGE CONNECTION TYPES ARE NOT ALLOWED.
2311	PROVIDE REMOTE TEST STATION FOR SMOKE DETECTORS WITH AUDIBLE AND VISUAL ALARM WITH VIBR. RES. MOUNT TEST STATION IN BMS. FIELD VERIFY DETECTOR TO SMOKE DETECTOR. ATTENDED LOCATION, CONSTANTY ATTENDED LOCATION IS NOT REQUIRED WHERE DUCT SMOKE DETECTOR ACTIVATES THE BUILDING'S ALARM SYSTEM.
2328	ROUTE DUCTWORK AS HIGH AS POSSIBLE PARALLEL TO STRUCTURE. REF. 2M1.2 TYPE.
2329	ROUTE DUCTWORK THROUGH THE JOIST SPACE. COORDINATE THROUGHING. REF. 2M1.1 TYPE.

HVAC LEGEND	
[Symbol]	NEW RECTANGULAR OR ROUND DUCT
[Symbol]	FLEXIBLE DUCT
[Symbol]	SUPPLY AIR DUCTWORK UP THROUGH PLAN
[Symbol]	RETURN AIR DUCTWORK UP THROUGH PLAN
[Symbol]	EXHAUST AIR DUCTWORK UP THROUGH PLAN
[Symbol]	90° ELBOW WITH TURNING VANES
[Symbol]	MANUAL AIR VOLUME CONTROL DAMPER
[Symbol]	4 WAY SUPPLY DIFFUSER
[Symbol]	3 WAY SUPPLY DIFFUSER
[Symbol]	2 WAY OPPOSED SUPPLY DIFFUSER
[Symbol]	2 WAY CORNER SUPPLY DIFFUSER
[Symbol]	RETURN AIR DEVICE
[Symbol]	EXHAUST AIR DEVICE
[Symbol]	AIR CURTAIN
[Symbol]	LINEAR SLOT DIFFUSER WITH PLUMB COMBINATION TEMPERATURE/HUMIDITY SENSOR
[Symbol]	TEMPERATURE SENSOR
[Symbol]	CO2 SENSOR
[Symbol]	TYPE MARK
[Symbol]	RTU-4S
[Symbol]	MECHANICAL EQUIPMENT TAG
[Symbol]	CONDENSATE PIPING
[Symbol]	ROOF MOUNTED EXHAUST FAN
[Symbol]	RIKE EXHAUST FAN
[Symbol]	PACKAGED ROOFTOP AIR CONDENSER

ISSUE BLOCK		
1	REV 1	03/20/24
2	REV 2	07/18/24

CHECKED BY:	MJS
DRAWN BY:	SGR
DOCUMENT DATE:	07/18/24
PROJ#:	0399184
PROJ CYCLE:	2003/2003
PLAN ISSUE:	CNST SET