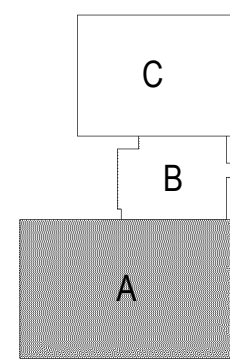
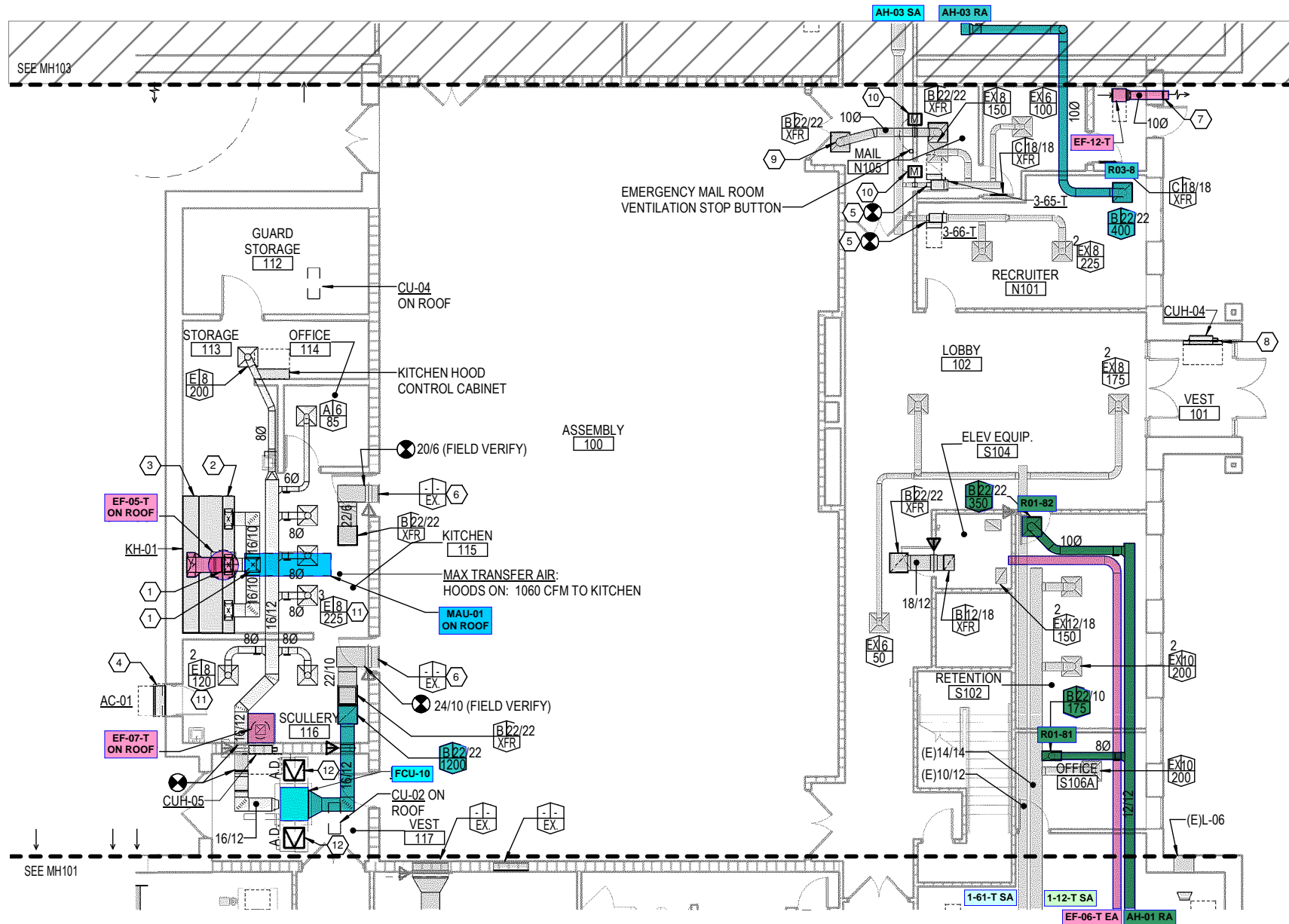


- ### KEYED NOTES
- LOCATE DEHUMIDIFIER ON WALL. PROVIDE MOUNTING BRACKETS. RUN CONDENSATE TO EXISTING FLOOR DRAIN.
 - EXISTING RETURN DUCT UP TO 2ND FLOOR.
 - PROVIDE NEW VAV BOX WITH TERMINAL CONTROLLER, ACTUATOR, SUPPLY TEMPERATURE SENSOR AND PIPING PACKAGE. CONNECT TO EXISTING INLET AND OUTLET DUCTWORK, PROVIDE TRANSITIONS AS REQUIRED. REFER TO "MP" SHEETS FOR THERMOSTAT LOCATIONS.
 - CONNECT NEW 55/24 RETURN DUCT TO EXISTING FIRE/SMOKE DAMPER AT THE FLOOR DECK.
 - EXTEND EXISTING EQUIPMENT PAD AS INDICATED TO SUPPORT NEW EQUIPMENT.
 - CONNECT TO EXISTING PLENUM ON BACK OF LOUVER.
 - DOOR SWITCH FOR VAULT VENTILATION FAN.
 - CAP EXISTING TRANSFER DUCT.
 - CONNECT TO EXISTING FIRE/SMOKE DAMPER. OFFSET TRANSITION AS REQUIRED TO AVOID EXISTING CHILLED WATER PIPING.
 - PROVIDE FIRE/SMOKE DAMPER WHERE IN NECK OF AIR DEVICE.
 - RETURN DUCT UP TO SECOND FLOOR.
 - SUPPLY DUCT DOWN FROM SECOND FLOOR.
 - EXHAUST DUCT UP TO SECOND FLOOR.
 - 10" DIA. DISCHARGE WITH HOOD AND INSECT SCREEN. LOCATE 10"-0" AFF.
 - CORE DRILL A 10" DIA. PENETRATION THROUGH THE VAULT CONCRETE LID FOR EXHAUST AND PROTECT THE OPENING PER DETAIL "5"/G-002. PROVIDE TRANSITION FITTING TO COVER OPENINGS AND TIE TO 10" DIA. EXHAUST DUCT.

1 FIRST FLOOR HVAC PLAN - AREA A



KEY PLAN



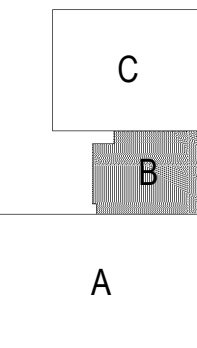
MAIL ROOM SEQUENCE

- EXHAUST FAN EF-12-T SHALL RUN CONTINUOUSLY TO MAINTAIN NEGATIVE PRESSURE IN THE MAIL AREA.
- UPON ACTIVATION OF THE MAIL ROOM VENTILATION STOP BUTTON, THE LOW-LEAK DAMPERS IN THE VAV 3-65-T INLET DUCT AND IN THE TRANSFER DUCT SHALL BE CLOSED. AN ALARM SHALL BE REPORTED THROUGH THE BAS.

KEYED NOTES

- 1 RE-USE EXISTING ROOF OPENING.
- 2 DOWNFLOW PERFORATED FACE MAKE-UP AIR PLENUM.
- 3 PROVIDE GREASE HOOD FIRE SUPPRESSION SYSTEM.
- 4 LOCATE NEW AIR CURTAIN OVER KITCHEN ACCESS DOOR. PROVIDE AUTOMATIC DOOR SWITCH.
- 5 PROVIDE NEW VAV BOX WITH TERMINAL CONTROLLER, ACTUATOR, SUPPLY TEMPERATURE SENSOR AND PIPING PACKAGE. CONNECT TO EXISTING INLET AND OUTLET DUCTWORK, PROVIDE TRANSITIONS AS REQUIRED. REFER TO "MP" SHEETS FOR THERMOSTAT LOCATIONS.
- 6 CONNECT TO EXISTING TRANSFER GRILLE.
- 7 10" DIA. DISCHARGE WITH HOOD AND INSECT SCREEN. LOCATE 10'-0" AFF.
- 8 CABINET UNIT HEATER ENCLOSURE PANEL FOR OUT OF WALL MOUNTING.
- 9 PROVIDE FIRE/SMOKE DAMPER WHERE DUCT PENETRATES RATED "LID".
- 10 PROVIDE LOW-LEAK MOTORIZED DAMPER IN DUCT.
- 11 ADJUST BLADE PATTERN TO AVOID SUPPLY AIRFLOW INTERFERENCE WITH KITCHEN HOOD EXHAUST CAPTURE.
- 12 PROVIDE A MINIMUM 24/24 ACCESS DOOR. ACCESS DOOR RATING TO MATCH CEILING.

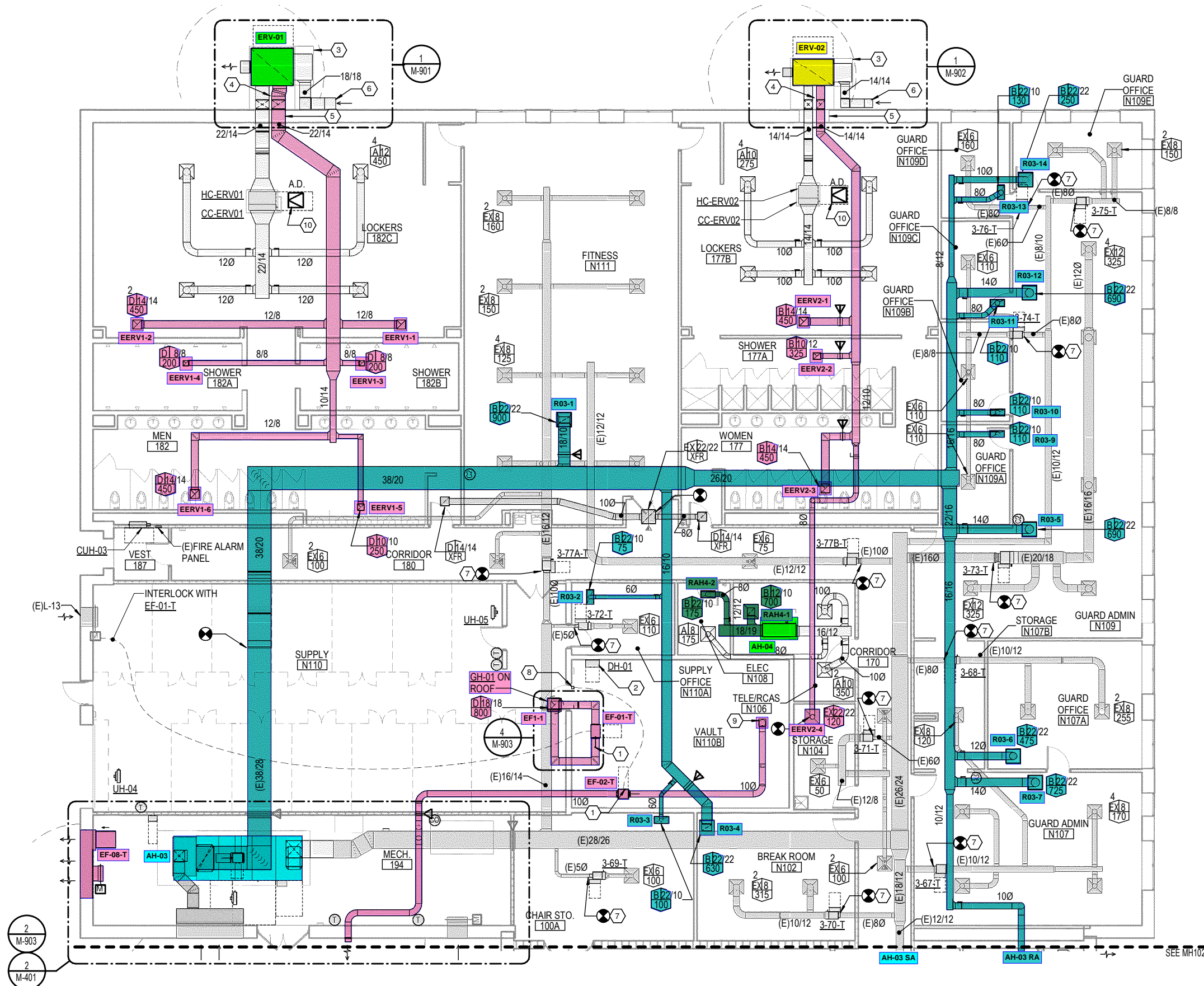
1 FIRST FLOOR HVAC PLAN - AREA B



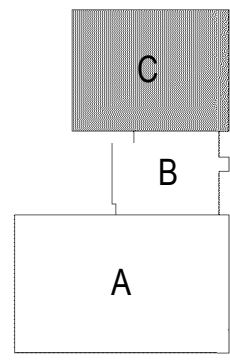
KEY PLAN

KEYED NOTES

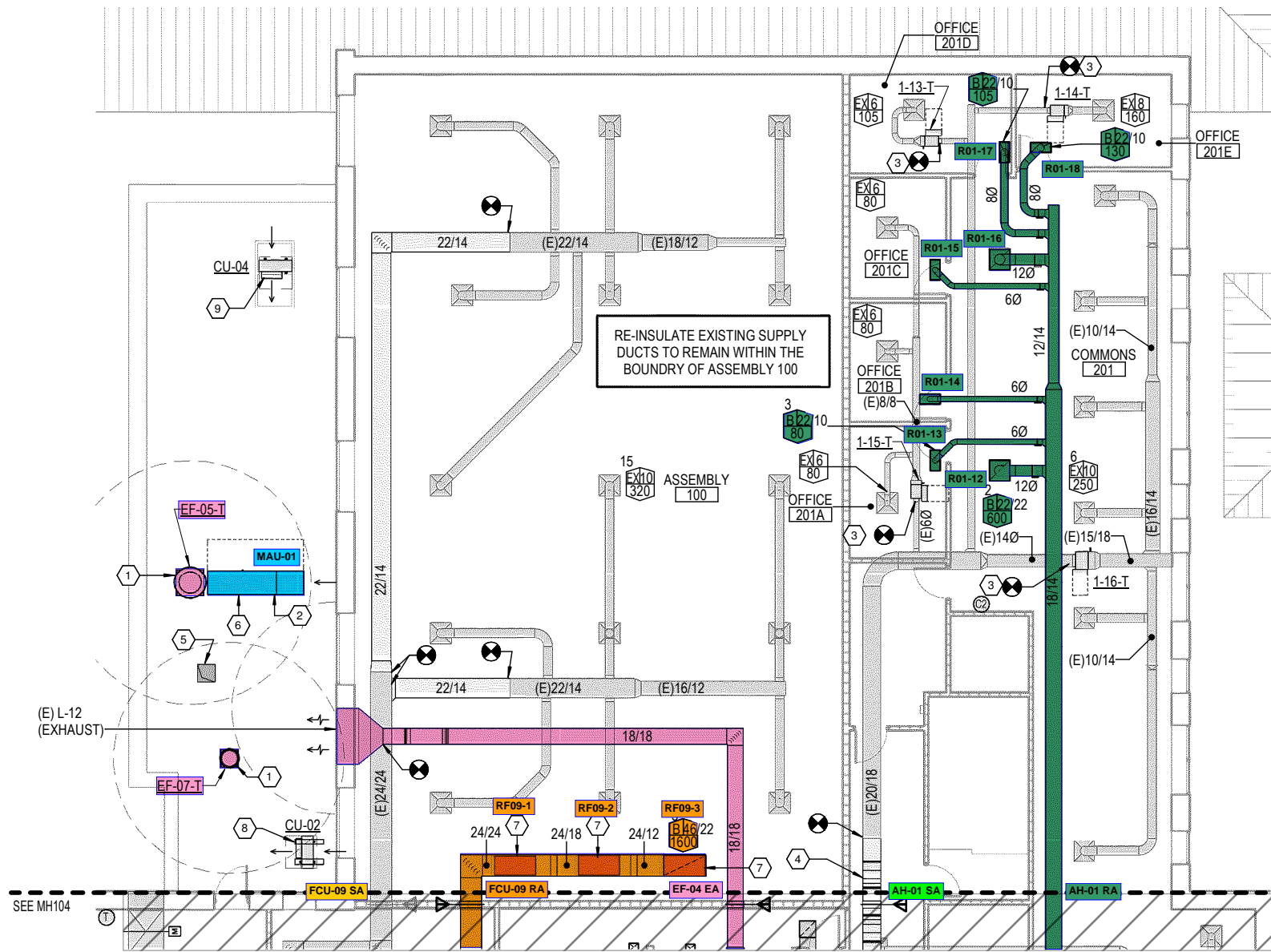
- 1 LOCATE NEW EXHAUST FAN ON TOP OF VAULT FOR ACCESSIBILITY.
- 2 LOCATE DEHUMIDIFIER ON WALL. PROVIDE MOUNTING BRACKETS. RUN CONDENSATE TO EXISTING FLOOR DRAIN.
- 3 NEW CONCRETE EQUIPMENT PAD.
- 4 SUPPLY AND EXHAUST DUCTS SERVING ENERGY RECOVERY UNITS SHALL BE DOUBLE WALL INSULATED WHILE EXTERNAL TO THE BUILDING. TRANSITION TO SINGLE WALL EXTERNALLY INSULATED DUCT WHERE THE DUCTS ENTER THE BUILDING.
- 5 IN-FILL UNUSED PORTION OF EXISTING LOUVER OPENING. REFERENCE ARCHITECTURAL DETAIL 2/G-004 FOR MORE INFORMATION.
- 6 EXTEND OUTSIDE AIR INTAKE TO A MINIMUM 10'-0" ABOVE GRADE AND TURN HORIZONTAL. PROVIDE 45-DEGREE CUT AND INSECT SCREEN OVER OPENING.
- 7 PROVIDE NEW VAV BOX WITH TERMINAL CONTROLLER, ACTUATOR, SUPPLY TEMPERATURE SENSOR AND PIPING PACKAGE. CONNECT TO EXISTING INLET AND OUTLET DUCTWORK. PROVIDE TRANSITIONS AS REQUIRED. REFER TO "MP" SHEETS FOR THERMOSTAT LOCATIONS.
- 8 DOOR SWITCH FOR VAULT VENTILATION FAN.
- 9 CORE DRILL A 10" DIA. PENETRATION THROUGH THE VAULT CONCRETE LID FOR EXHAUST AND PROTECT THE OPENING PER DETAIL "5"/G-002. PROVIDE TRANSITION FITTING TO COVER OPENINGS AND TIE TO 10" DIA. EXHAUST DUCT.
- 10 PROVIDE A MINIMUM 24/24 ACCESS DOOR. ACCESS DOOR RATING TO MATCH CEILING.



1 FIRST FLOOR HVAC PLAN - AREA C



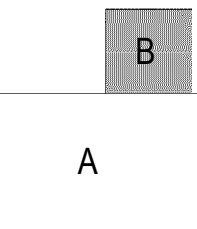
KEY PLAN



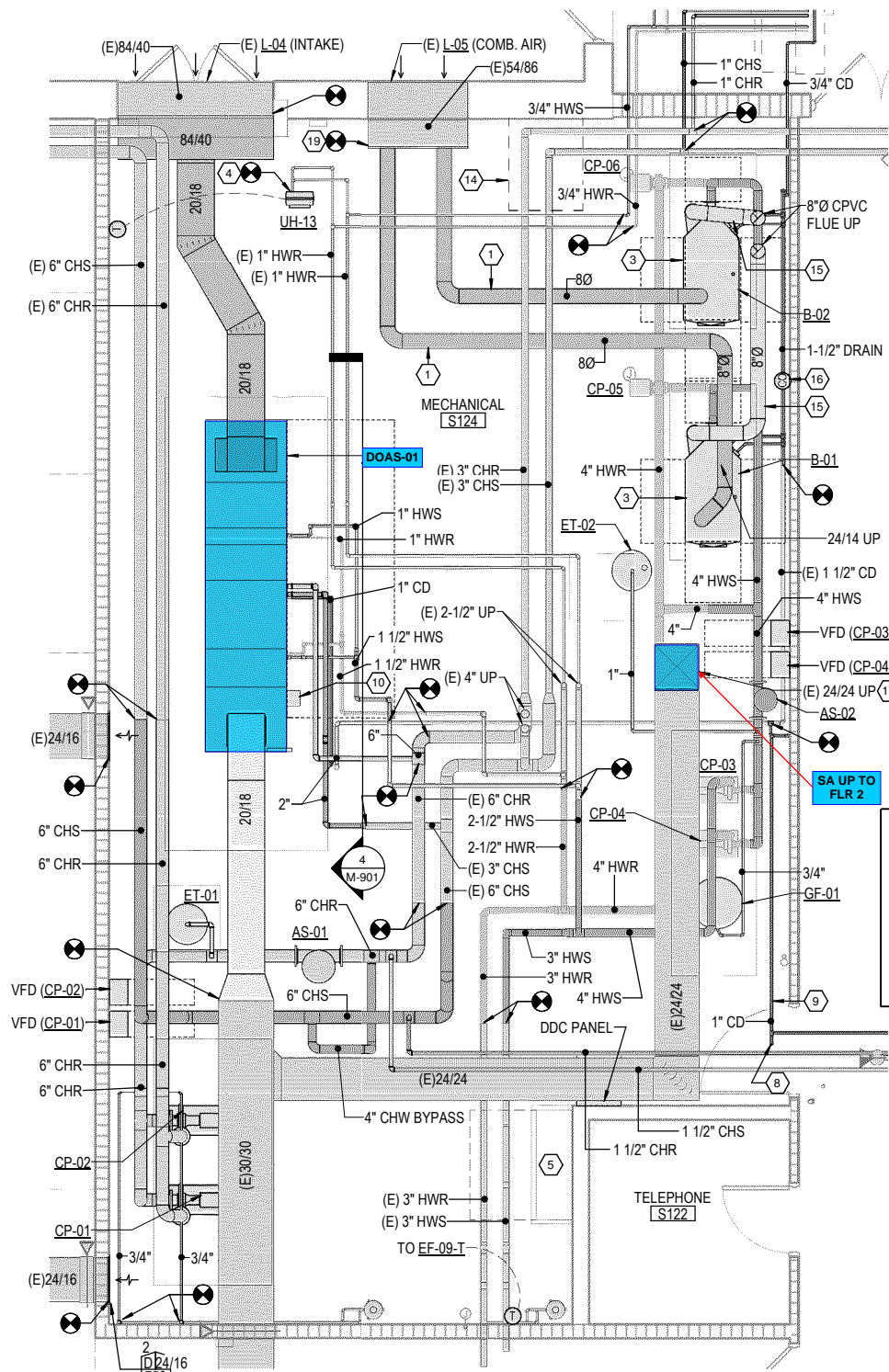
KEYED NOTES

- 1 LOCATE NEW EXHAUST FAN ON EXISTING CURB.
- 2 LOCATE NEW MAKE-UP AIR UNIT ON EXISTING CURB.
- 3 PROVIDE NEW VAV BOX WITH TERMINAL CONTROLLER, ACTUATOR, SUPPLY TEMPERATURE SENSOR AND PIPING PACKAGE. CONNECT TO EXISTING INLET AND OUTLET DUCTWORK, PROVIDE TRANSITIONS AS REQUIRED. REFER TO "MP" SHEETS FOR THERMOSTAT LOCATIONS.
- 4 ROUTE DUCT OVER CORRIDOR "LID" THROUGH SMOKE PARTITION.
- 5 PROVIDE PAINTED GALVANIZED INSULATED COVER OVER EXISTING CURB. CREASE CAP TO PREVENT WATER PONDING.
- 6 REFER TO PLUMBING DRAWINGS FOR NATURAL GAS PIPING.
- 7 PROVIDE OPPOSED BLADE DAMPER WITH QUADRANT LOCKING OPERATOR IN DUCTS SERVING RETURN GRILLES.
- 8 PROVIDE ROOF SUPPORT FOR CONDENSING UNIT.
- 9 LOCATE CONDENSING UNIT ON EXISTING EQUIPMENT PLATFORM.

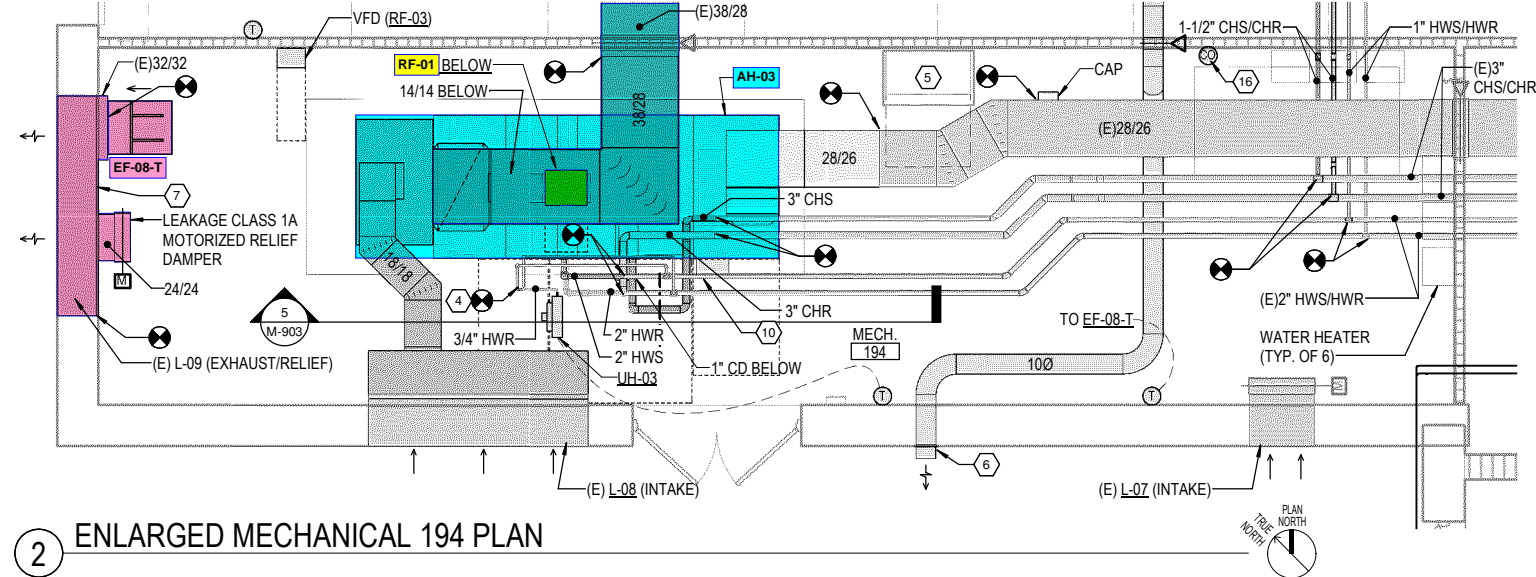
1 SECOND FLOOR HVAC PLAN - AREA B



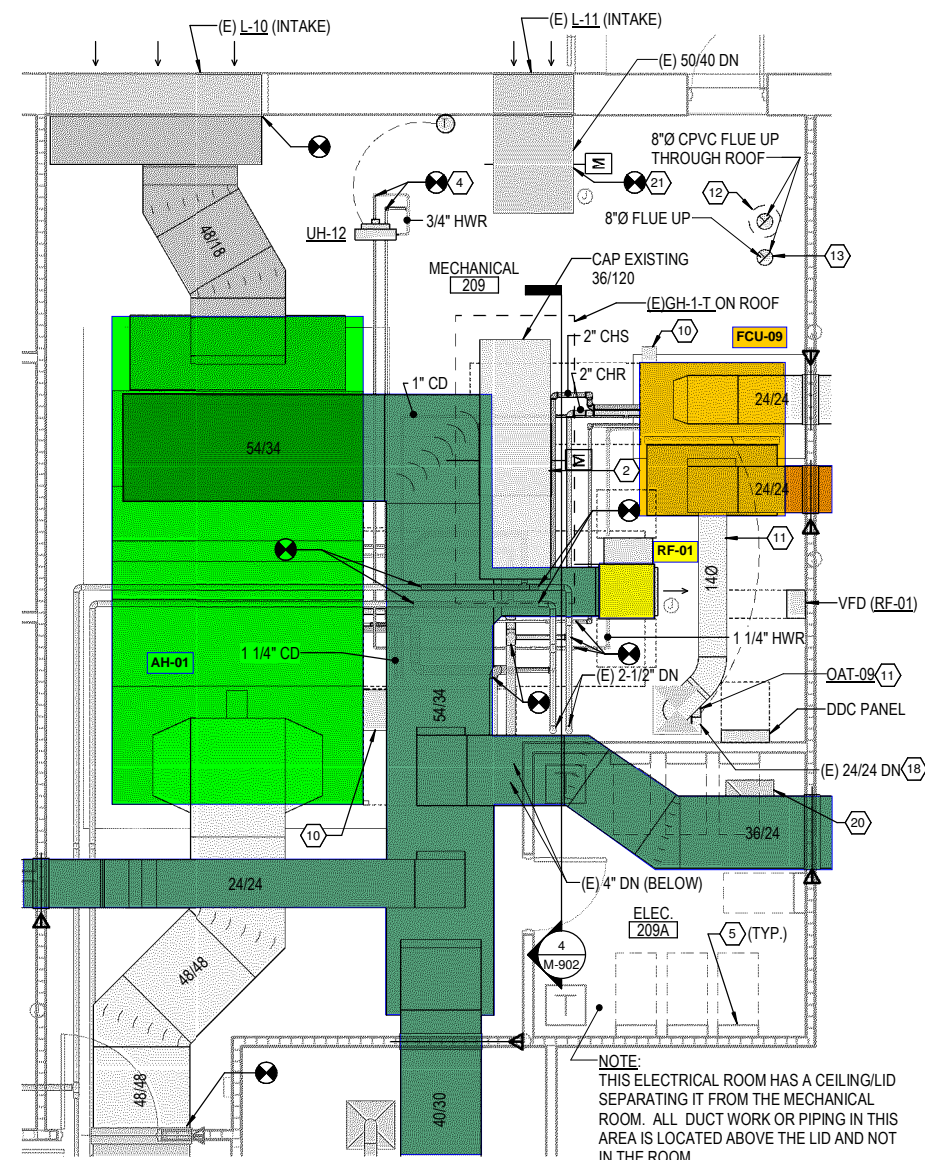
KEY PLAN



1 ENLARGED MECHANICAL S124 PLAN



2 ENLARGED MECHANICAL 194 PLAN



3 ENLARGED MECHANICAL 209 PLAN

GENERAL NOTES
(ALL ENLARGED PLANS)

- REFER TO THE ISOMETRIC DRAWINGS ON SHEETS M-901 THROUGH M-903 FOR ADDITIONAL INFORMATION INCLUDING PIPE AND DUCTS SIZES NOT INCLUDED ON THE ENLARGED PLANS.

KEYED NOTES

- PVC COMBUSTION AIR DUCT.
- PROVIDE NEW 36/36 LEAKAGE CLASS 1A MOTORIZED RELIEF DAMPER IN NECK OF EXISTING RELIEF HOOD.
- REFER TO PLUMBING DRAWINGS FOR NATURAL GAS PIPING.
- CONNECT NEW UNIT HEATER TO EXISTING HEATING WATER PIPING.
- ELECTRICAL PANEL.
- 10" DIA. DISCHARGE WITH HOOD AND INSECT SCREEN. LOCATE 10'-0" AFF.
- PROVIDE INSULATED BLANK-OFF OVER UNUSED PORTIONS OF LOUVER.
- PROVIDE A REMOVABLE CAP AT CHANGES IN DIRECTION FOR CLEANING OF CONDENSATE PIPING.
- RUN TO NEAREST FLOOR DRAIN.
- AIR HANDLER MOUNTED VFD OR MOTOR CONTROLLER.
- TRANSITION FROM (E) 24/24 TO 14" DIAMETER IN VERTICAL AND INSTALL OAT-09 3'-0" AFF. CONNECT OUTSIDE AIR DUCT TO THE 24/24 RETURN SERVING FCU-09 AT 8'-0" AFF.
- IN-FILL UNUSED PORTION OF (E) 16" DIAMETER FLOOR OPENING.
- NEW OPENING IN FLOOR FOR 8" DIAMETER FLUE.
- MAKE-UP AIR OPENING AT 2ND FLOOR LEVEL.
- CPVC FLUE VENT.
- CARBON MONOXIDE DETECTOR.
- SUPPLY DUCT UP TO SECOND FLOOR.
- SUPPLY DUCT DOWN TO FIRST FLOOR.
- CAP EXISTING 54/86 PLENUM FOR USE AS INLET FOR DUCTED BOILER COMBUSTION AIR.
- EXISTING TRANSFER GRILLE IN ELECTRICAL ROOM CEILING/LID TO REMAIN.
- PROVIDE NEW MOTORIZED DAMPER IN EXISTING MAKE-UP AIR DUCT.

NOTE:
THIS ELECTRICAL ROOM HAS A CEILING/LID SEPARATING IT FROM THE MECHANICAL ROOM. ALL DUCT WORK OR PIPING IN THIS AREA IS LOCATED ABOVE THE LID AND NOT IN THE ROOM.