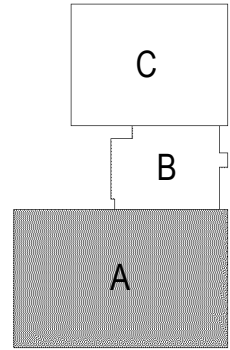


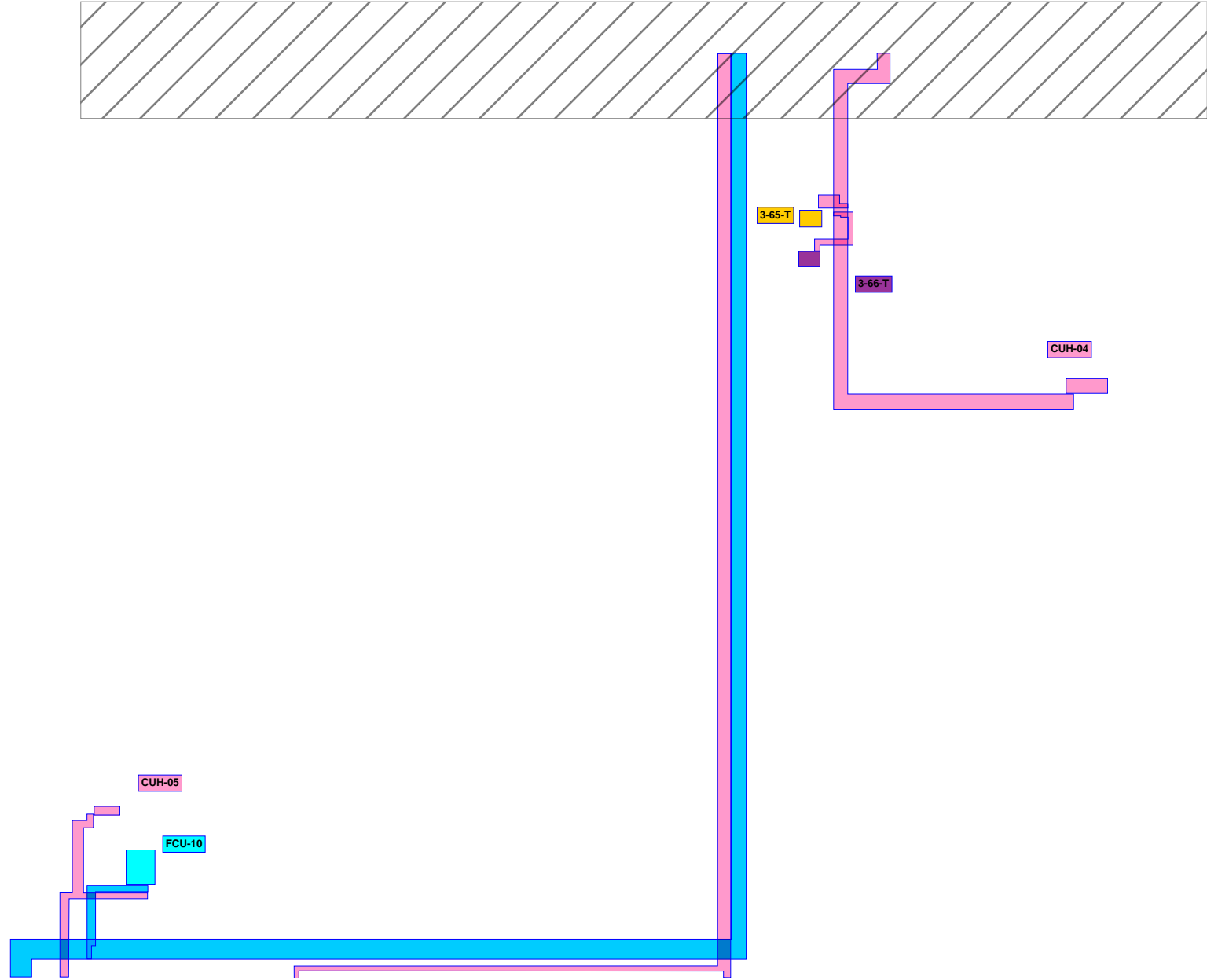
**KEYED NOTES**

- 1 CONNECT NEW UNIT HEATER TO EXISTING HEATING WATER PIPING.
- 2 RUN DRAIN LINE FROM DEHUMIDIFIER TO EXISTING FLOOR DRAIN.
- 3 PROVIDE PIPING PACKAGE FOR VAV BOX. CONNECT TO EXISTING HWS/HWR.
- 4 PROVIDE AUXILIARY DRAIN PAN UNDER AIR HANDLING UNITS, FAN COIL UNITS AND COOLING COILS. PAN SHALL ENCOMPASS THE FULL PERIMETER OF THE EQUIPMENT AND BE CONSTRUCTED OF NON-CORROSIVE MATERIAL. PROVIDE FLOAT SWITCH TO DISABLE THE EQUIPMENT AND ALERT THE BUILDING AUTOMATION SYSTEM.
- 5 PROVIDE HEAT TRACE ON EXPOSED CHILLED WATER PIPING.
- 6 CONNECT NEW CABINET UNIT HEATER TO EXISTING HEATING WATER PIPING.
- 7 CONNECT NEW FAN COIL UNIT TO EXISTING HEATING WATER PIPING.
- 8 PROVIDE A REMOVABLE CAP AT CHANGES IN DIRECTION FOR CLEANING OF CONDENSATE PIPING.
- 9 THERMOSTAT FOR CABINET UNIT HEATER LOCATED ON THE WALL ABOVE THE HEATER.
- 10 UTILIZE AUXILIARY CONTACT ON LIGHTING CONTROL OCCUPANCY SENSOR TO DETERMINE ROOM OCCUPANCY FOR VENTILATION CALCULATIONS.

1 FIRST FLOOR MECHANICAL PIPING PLAN - AREA A

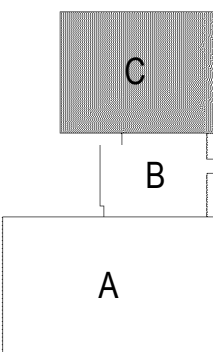
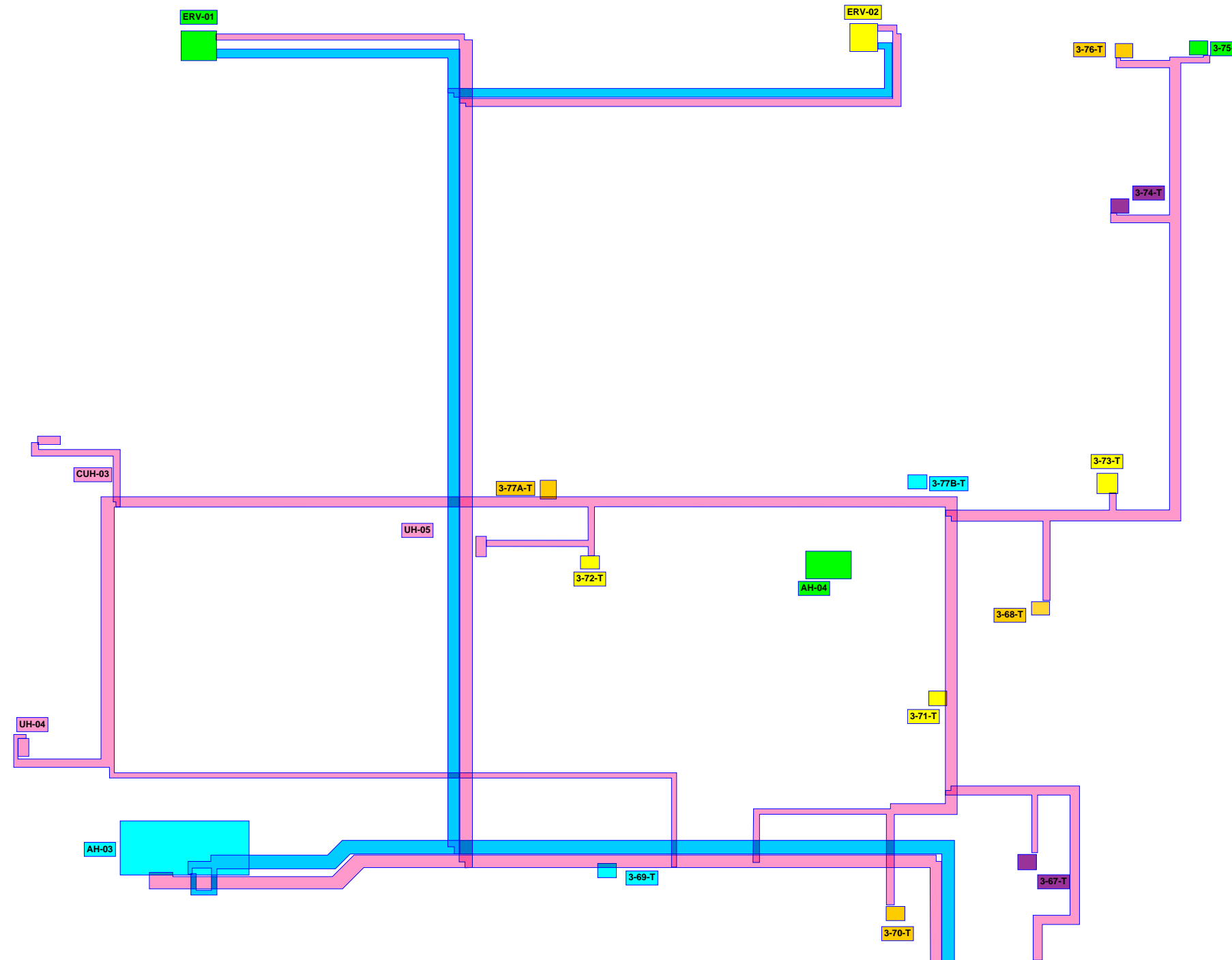


KEY PLAN

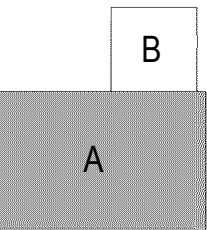
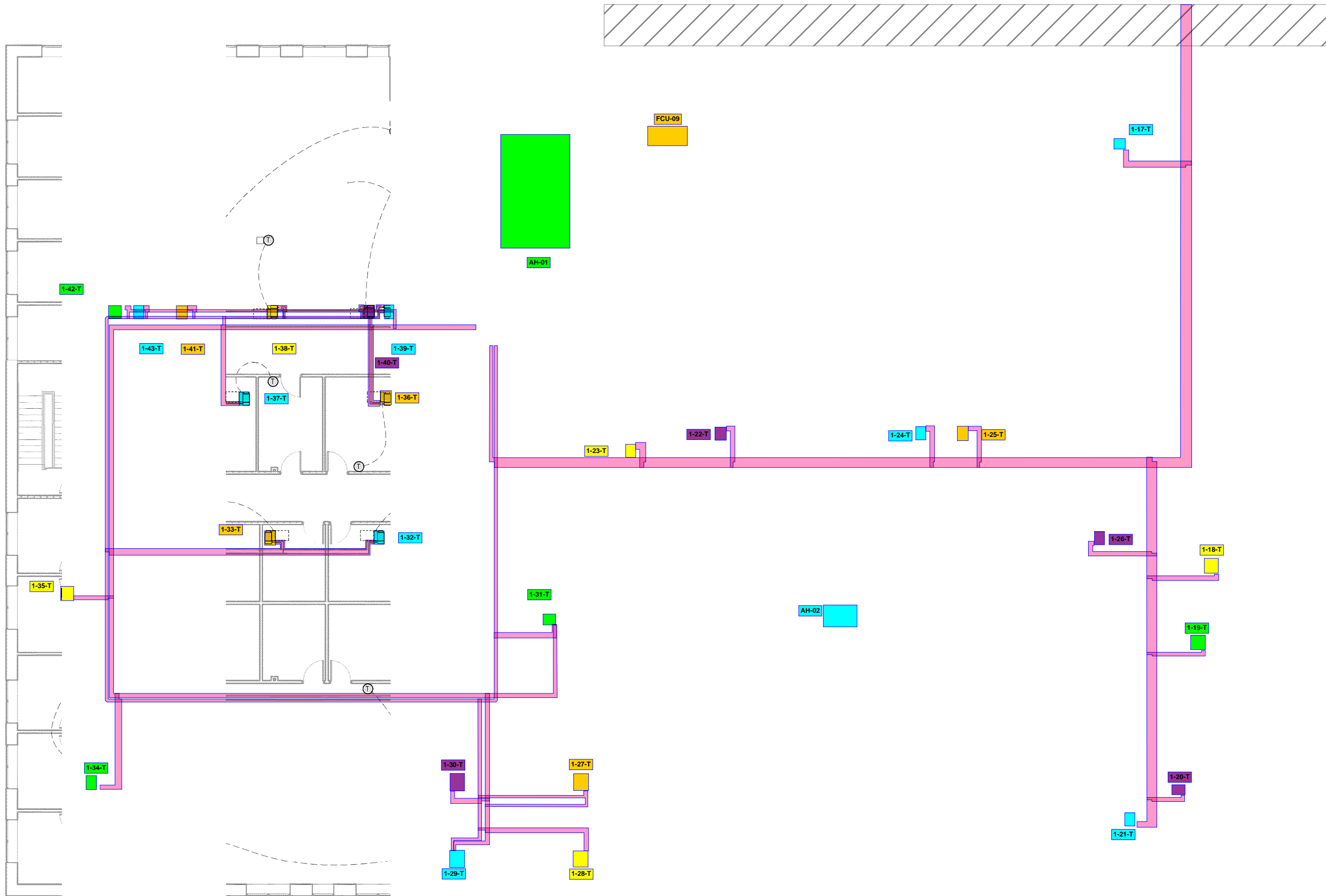


## KEYED NOTES

- 1 CONNECT NEW UNIT HEATER TO EXISTING HEATING WATER PIPING.
- 2 RUN DRAIN LINE FROM DEHUMIDIFIER TO EXISTING FLOOR DRAIN.
- 3 PROVIDE PIPING PACKAGE FOR VAV BOX. CONNECT TO EXISTING HWS/HWR.
- 4 PROVIDE AUXILIARY DRAIN PAN UNDER AIR HANDLING UNITS, FAN COIL UNITS AND COOLING COILS. PAN SHALL ENCOMPASS THE FULL PERIMETER OF THE EQUIPMENT AND BE CONSTRUCTED OF NON-CORROSIVE MATERIAL. PROVIDE FLOAT SWITCH TO DISABLE THE EQUIPMENT AND ALERT THE BUILDING AUTOMATION SYSTEM.
- 5 CONNECT NEW CABINET UNIT HEATER TO EXISTING HEATING WATER PIPING.
- 6 THERMOSTAT FOR CABINET UNIT HEATER LOCATED ON THE WALL ABOVE THE HEATER.
- 7 RUN CONDENSATE TO EXISTING PLUMBING VENT. PROVIDE AN OPEN-SITE DRAIN WITH A P-TRAP AND TRAP SEAL.
- 8 SIZE REFRIGERANT PIPING PER EQUIPMENT MANUFACTURER'S RECOMMENDATIONS.
- 9 UTILIZE AUXILIARY CONTACT ON LIGHTING CONTROL OCCUPANCY SENSOR TO DETERMINE ROOM OCCUPANCY FOR VENTILATION CALCULATIONS.



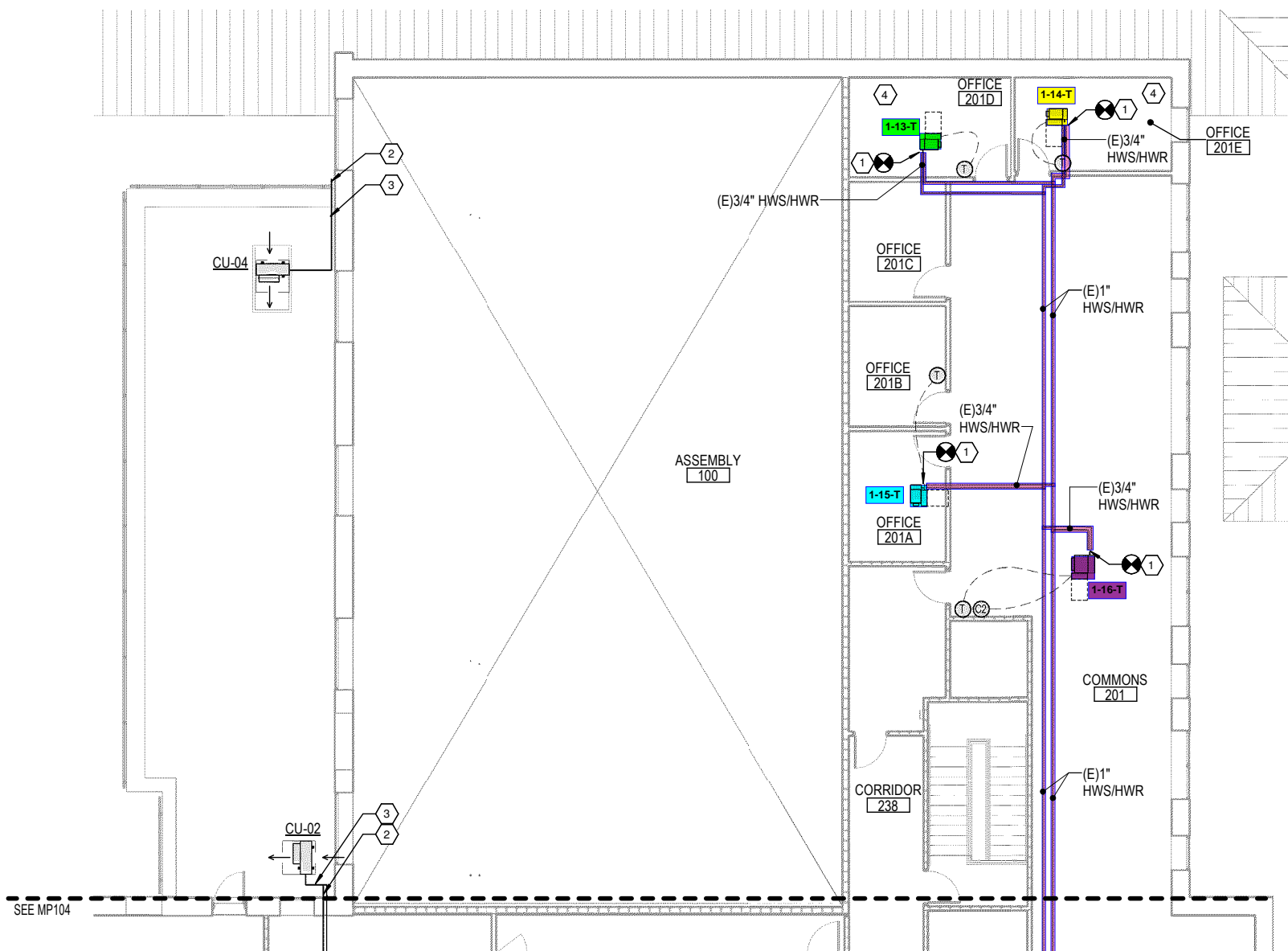
KEY PLAN



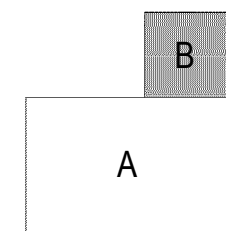
KEY PLAN

## KEYED NOTES

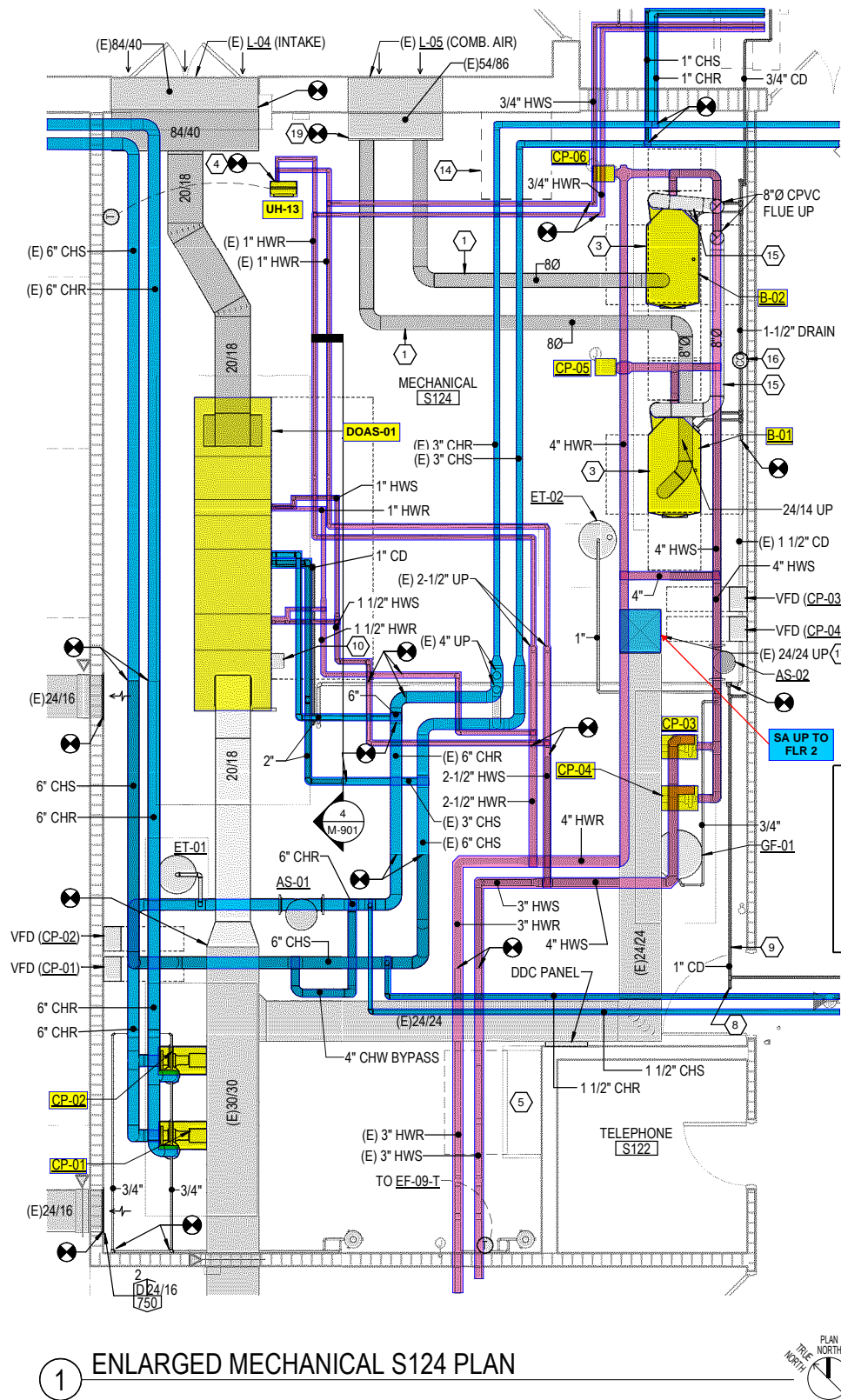
- 1 PROVIDE PIPING PACKAGE FOR VAV BOX. CONNECT TO EXISTING HWS/HWR.
- 2 CONCEAL EXPOSED REFRIGERANT PIPING INSIDE LINE COVER KIT. PAINT TO MATCH BRICK WITH UV RESISTANT PAINT. ANY OPENINGS SHALL BE SEALED WEATHER TIGHT AND RODENT PROOF. SPRAY FOAM IS NOT ACCEPTABLE.
- 3 SIZE REFRIGERANT PIPING PER EQUIPMENT MANUFACTURER'S RECOMMENDATIONS.
- 4 UTILIZE AUXILIARY CONTACT ON LIGHTING CONTROL OCCUPANCY SENSOR TO DETERMINE ROOM OCCUPANCY FOR VENTILATION CALCULATIONS.



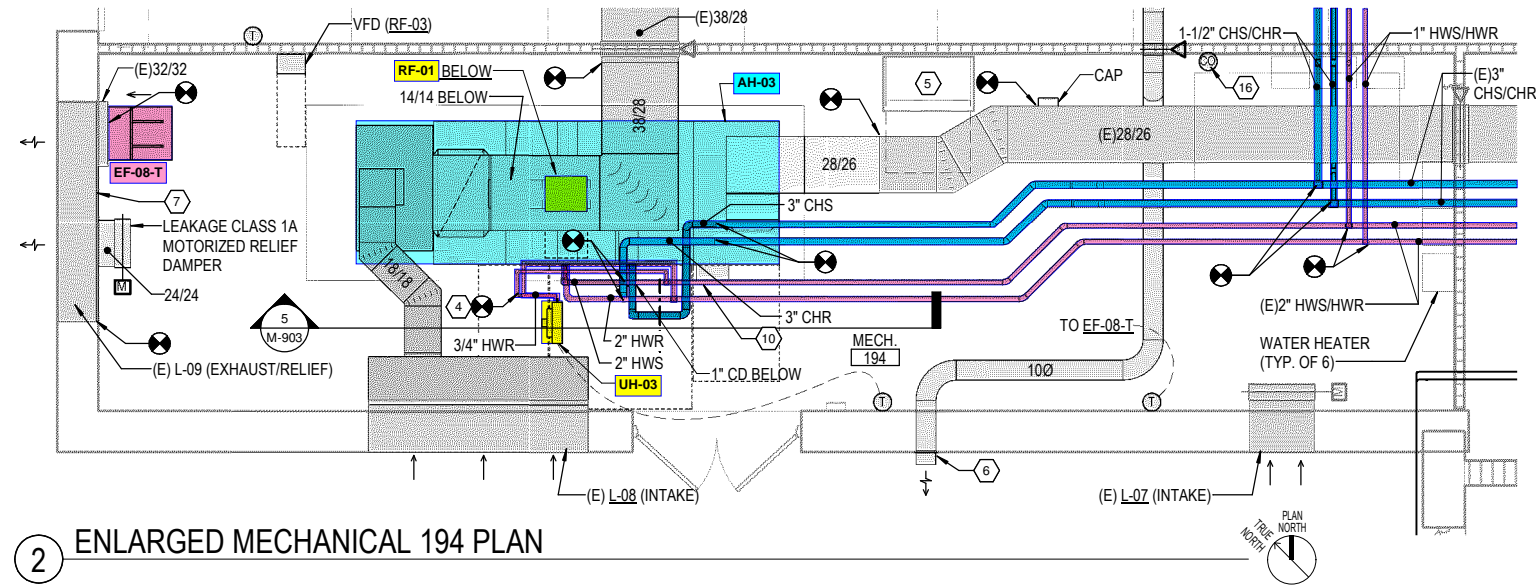
① SECOND FLOOR MECHANICAL PIPING PLAN - AREA B



KEY PLAN



1 ENLARGED MECHANICAL S124 PLAN

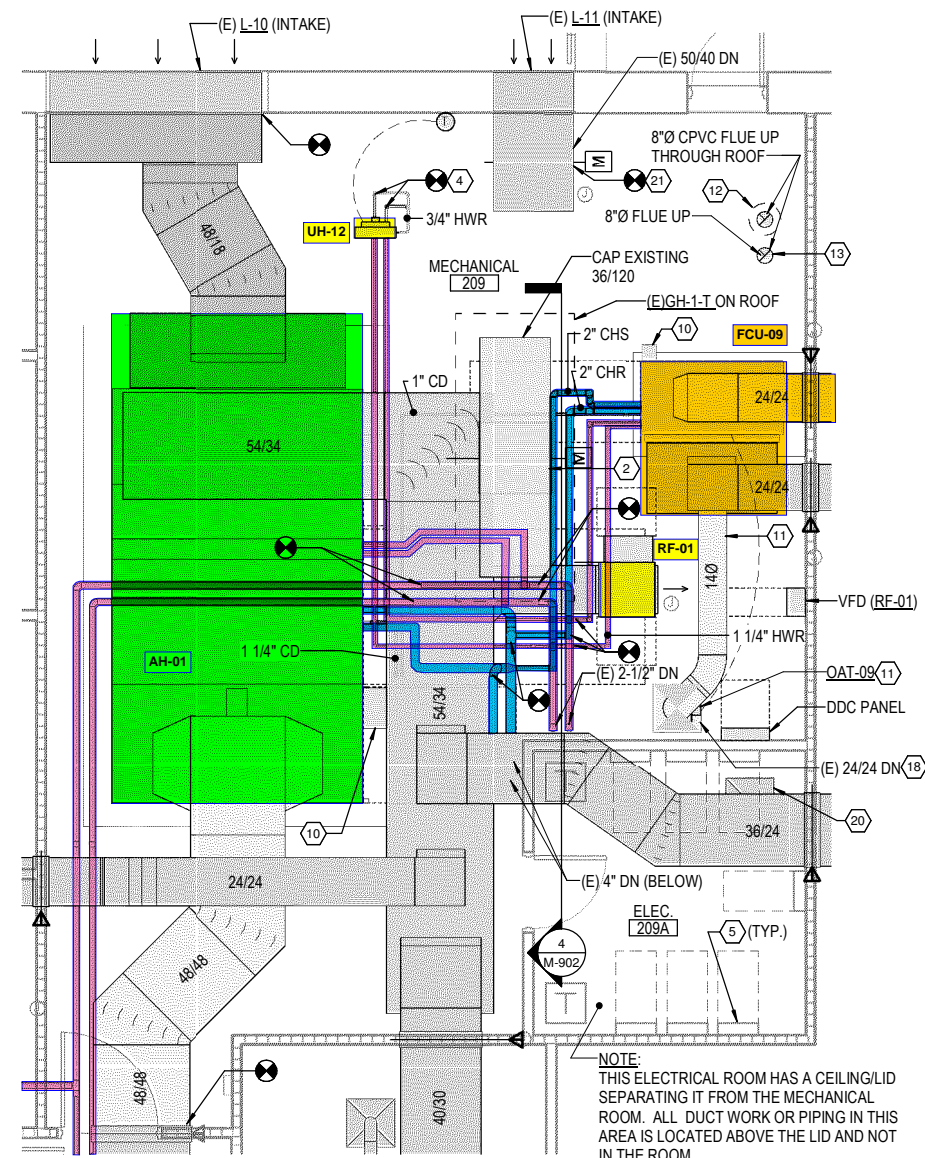


2 ENLARGED MECHANICAL 194 PLAN

**GENERAL NOTES**

(ALL ENLARGED PLANS)

1. REFER TO THE ISOMETRIC DRAWINGS ON SHEETS M-901 THROUGH M-903 FOR ADDITIONAL INFORMATION INCLUDING PIPE AND DUCTS SIZES NOT INCLUDED ON THE ENLARGED PLANS.



3 ENLARGED MECHANICAL 209 PLAN

**KEYED NOTES**

- 1 PVC COMBUSTION AIR DUCT.
- 2 PROVIDE NEW 36/36 LEAKAGE CLASS 1A MOTORIZED RELIEF DAMPER IN NECK OF EXISTING RELIEF HOOD.
- 3 REFER TO PLUMBING DRAWINGS FOR NATURAL GAS PIPING.
- 4 CONNECT NEW UNIT HEATER TO EXISTING HEATING WATER PIPING.
- 5 ELECTRICAL PANEL.
- 6 10" DIA. DISCHARGE WITH HOOD AND INSECT SCREEN. LOCATE 10'-0" AFF.
- 7 PROVIDE INSULATED BLANK-OFF OVER UNUSED PORTIONS OF LOUVER.
- 8 PROVIDE A REMOVABLE CAP AT CHANGES IN DIRECTION FOR CLEANING OF CONDENSATE PIPING.
- 9 RUN TO NEAREST FLOOR DRAIN.
- 10 AIR HANDLER MOUNTED VFD OR MOTOR CONTROLLER.
- 11 TRANSITION FROM (E) 24/24 TO 14" DIAMETER IN VERTICAL AND INSTALL OAT-09 3'-0" AFF. CONNECT OUTSIDE AIR DUCT TO THE 24/24 RETURN SERVING FCU-09 AT 8'-0" AFF.
- 12 IN-FILL UNUSED PORTION OF (E) 16" DIAMETER FLOOR OPENING.
- 13 NEW OPENING IN FLOOR FOR 8" DIAMETER FLUE.
- 14 MAKE-UP AIR OPENING AT 2ND FLOOR LEVEL.
- 15 CPVC FLUE VENT.
- 16 CARBON MONOXIDE DETECTOR.
- 17 SUPPLY DUCT UP TO SECOND FLOOR.
- 18 SUPPLY DUCT DOWN TO FIRST FLOOR.
- 19 CAP EXISTING 54/86 PLENUM FOR USE AS INLET FOR DUCTED BOILER COMBUSTION AIR.
- 20 EXISTING TRANSFER GRILLE IN ELECTRICAL ROOM CEILING/LID TO REMAIN.
- 21 PROVIDE NEW MOTORIZED DAMPER IN EXISTING MAKE-UP AIR DUCT.