

GAS FIRED ROOFTOP UNIT SCHEDULE

MARK	AREA SERVED	TONNAGE	COOLING CAPACITY (MBH)		HEATING CAPACITY (MBH)		FAN SECTION (CFM) INCLUDING EXISTING AC UNITS REBALANCE				MODEL	% OA	MANUFACTURER	ELECTRICAL DATA			REMARKS	APPROX. WEIGHT WITH OPTIONS (POUNDS)
			TOTAL	SENS	INPUT	OUTPUT	SUPPLY	O.A.	HP	ESP				V/PH/Hz	MCA	MOC/P		
EXISTING AC#1	DINING A	10.0	EXISTING	EXISTING	EXISTING	EXISTING	3,800	875	-	-	EXISTING	23%	EXISTING	208/3/60	-	-	EXISTING	EXISTING
NEW AC#2	KITCHEN	25.0	281.0	270.0	480	384	9,100	2,000	10	0.8	LGT30054MH	22%	LENNOX	208/3/60	143	150	1,3,4,5,7,8,9,10,12,14,15,16, 17,18,20	2,735
EXISTING AC#3	DINING B	8.5	EXISTING	EXISTING	EXISTING	EXISTING	3,400	785	-	-	EXISTING	23.1%	EXISTING	208/3/60	-	-	EXISTING	EXISTING
NEW AC#4	BOH, RR	4.0	49.9	37.9	150	121	1,500	350	1.5	0.8	LGT048H4EX	23.4%	LENNOX	208/3/60	22	30	2,3,4,5,7,8,9,10,12,14,15,16, 17,18,20	754

NOTES:

- COOLING CAPACITIES ARE GROSS, BASED ON ENTERING: 80FDB/67FWB, OUTDOOR: 95FDB, AND 400 CFM PER TON.
- CHICK-FIL-A MAINTAINS A NATIONAL ACCOUNT FOR EQUIPMENT WITH LENNOX CORPORATION. CONTACT LENNOX NATIONAL ACCOUNTS AT 972-497-6219 (OR BY FAX AT 972-497-5112) FOR PRICING, ORDERING AND AVAILABILITY.
- MECHANICAL CONTRACTOR TO VERIFY LENNOX SUBMITTAL WITH CONSTRUCTION DOCUMENTS.

REMARKS:

- PROVIDE DIFFERENTIAL ENTHALPHY ECONOMIZER WITH POWER EXHAUST.
- PROVIDE DIFFERENTIAL ENTHALPHY ECONOMIZER WITH BAROMETRIC EXHAUST.
- PROVIDE 14" HIGH ROOF CURB. PROVIDE CURBS PLUS ANCHOR. REFER TO 8M-401 FOR ANCHORING.
- SEE DETAIL ON SHEET M-501 FOR SETTING OF PRODIGY M3 BOARD CONTROL PARAMETERS BY MC.
- PROVIDE FACTORY INSTALLED AND UNIT POWERED 115V GFI SERVICE OUTLET.
- PROVIDE FACTORY INSTALLED 115V GFI SERVICE OUTLET.
- PROVIDE FACTORY INSTALLED SUPPLY AND RETURN SIDE SMOKE DETECTOR.
- PROVIDE FACTORY INSTALLED NON-FUSED DISCONNECT.
- PROVIDE 2" MERV 8 THROW AWAY FILTERS.
- PROVIDE HINGED PANELS FOR FILTER ACCESS, FAN MOTOR ACCESS, COMPRESSOR ACCESS AND CONTROL COMPARTMENT ACCESS.
- ADJUST GAS MANIFOLD PRESSURE AT LOCATIONS WHERE ELEVATION EXCEEDS 2000' ABOVE SEA LEVEL AS RECOMMENDED BY MANUFACTURER.
- PROVIDE FRESH AIR TEMPERING KIT.
- PROVIDE FACTORY COIL HAIL GUARD, FIELD INSTALLED.
- PROVIDE FRESH AIR TEMPERING KIT.
- PROVIDE HUMIDITROL OPTION WITH FACTORY WALL MOUNTED HUMIDITY SENSOR.
- PROVIDE FACTORY INSTALLED BELT TENSIONER.
- PROVIDE FACTORY CONFIGURED PHASE LOSS PROTECTION.
- PROVIDE FACTORY INSTALLED CONDENSATE PAN DRAIN OVERFLOW SWITCH.
- PROVIDE UNIT WITH MSAV BLOWER.
- PROVIDE FACTORY STAINLESS STEEL HEAT EXCHANGER.
- PROVIDE WITH 100K SCCR REATING. REFER TO DESIGN NOTE 2022-007 FOR MORE INFORMATION.

CONTRACTOR SHALL VERIFY EXACT ELECTRICAL CONNECTIONS, WIRE SIZES, BREAKERS, DISCONNECT, ETC. FOR THE NEW ROOFTOP UNITS PRIOR TO ORDERING AND BID.

AIR DEVICE SCHEDULE

MARK	DESCRIPTION	LOCATION	NECK SIZE	FACE SIZE	FRAME TYPE	REMARKS
A	PRICE MODEL APDC ALUMINUM SUPPLY AIR DIFFUSER WITH INDIVIDUALLY ADJUSTABLE CURVED AIR PATTERN CONTROLLERS.	DINING/ KITCHEN	VARIABLES	24"x24"	LAY-IN	1,7
C	PRICE MODEL SMC D STEEL SUPPLY AIR DIFFUSER FIELD ADJUSTABLE AIR PATTERN CONTROLLERS.	ENTRY	14"x14"	19"x19"	BEVELED	1,5,6
F	PRICE MODEL 80 EGGGRATE RETURN AIR GRILLE WITH REMOVABLE WHITE CORE. FACTORY FLAT BLACK BACKPAN AND ROUND NECK.	DINING/ OFFICE/ KITCHEN	VARIABLES	24"x24"	LAY-IN	1,7
J	PRICE MODEL SMC D STEEL SUPPLY AIR DIFFUSER FIELD ADJUSTABLE AIR PATTERN CONTROLLERS.	RESTROOMS	10"x10"	15"x15"	BEVELED	1,2,5,6
K	PRICE MODEL APDDR ALUMINUM PERFORATED FACE RETURN AIR GRILLE.	RESTROOM ENTRY	14"x14"	16"x16"	SURFACE	1,4,5,6

NOTES:

- CHICK-FIL-A HAS A NATIONAL ACCOUNT WITH TOM BARROW COMPANY FOR THE AIR DEVICES. THE MECHANICAL CONTRACTOR SHALL PURCHASE THE AIR DEVICES DIRECTLY FROM TOM BARROW COMPANY. CONTACT MR. SCOTT GEORGE AT 404-351-1010, FOR PRICING AND AVAILABILITY. AIR DEVICES NOT PURCHASED THRU TOM BARROW COMPANY WILL NOT BE ACCEPTED.

REMARKS:

- STANDARD OFF WHITE FINISH
- PROVIDE MODEL VCS3 NECK DAMPER.
- NOT USED
- PROVIDE MODEL VCR7 NEG DAMPER ON GRILLES IN RESTROOMS SERVING EXHAUST FAN.
- PROVIDE BACKPAN. MC TO SEAL JOINTS WITH MASTIC AND INSULATE EXTERNALLY.
- FIELD INSULATE BACKPAN AS SHOWN ON DETAIL 1 ON SHEET M-401
- FACTORY INSULATED R-6 BACKPAN.

EXHAUST FAN SCHEDULE

MARK	CFM	ESP	RPM	HP	Area Served	MODEL	MANUFACTURER	REMARKS
EF#1 NEW	1913	0.75	1078	3/4	HOOD H-1L & H-1R	180VCR	LOREN COOK	1,2,3,4,5
EF#2 NEW	701	0.75	1216	1/4	HOOD H-2	150VCR-HP	LOREN COOK	1,2,3,4,5
EF#3 EXISTING	300				RESTROOMS			
EF#4 NEW	701	0.75	1216	1/4	HOOD H-3	150VCR-HP	LOREN COOK	1,2,3,4,5

NOTES:

- GREASE EXHAUST FAN RPM BASED ON 80 DEGREE F AIR AT 1000 FEET ABOVE SEA LEVEL.
- GREASE EXHAUST FANS TO BE U.L. 762 LISTED.
- CHICK-FIL-A HAS A NATIONAL ACCOUNT WITH TOM BARROW COMPANY FOR THE FAN/CURB PACKAGE. THE MECHANICAL CONTRACTOR IS REQUIRED TO PURCHASE THE FAN/CURB PACKAGE DIRECTLY FROM TOM BARROW COMPANY. CONTACT MR. SCOTT GEORGE AT 404-351-1010 FOR PRICING AND AVAILABILITY. FANS AND CURBS NOT PURCHASED THRU TOM BARROW COMPANY WILL NOT BE ACCEPTED.

REMARKS:

- PROVIDE FACTORY 1'-0" BASE CURB AND EXTENSION.
- PROVIDE FACTORY INSTALLED, PRE-WIRED, NEMA 3 NON-FUSED DISCONNECT.
- PROVIDE FACTORY INSTALLED HINGED BASE KIT. REFER TO DETAIL SHEET M-401 FOR HINGE LOCATION INFORMATION.
- PROVIDE AND INSTALL ROOFTOP SOLUTIONS G2 DRIP GAURD. MECHANICAL CONTRACTOR TO CONTACT. ROOFTOP SOLUTIONS AT 800-913-7034.
- INTEGRAL THERMAL OVERLOAD WITH AUTOMATIC RESET.

AIR DOOR SCHEDULE

MARK	CFM	VELOCITY	HEATING CAP	HP	AREA SERVED	MODEL	MANUFACTURER	REMARKS
AD#1	1543	2240 FPM	10 kW	3/4 HP	DRIVE THRU	CHA-1-48E	Powered Aire	1,2,3,5
AD#2	3867	4220 FPM	N/A	3/4 HP	REAR DOOR	RBT-1-36	Powered Aire	4

NOTES:

- CHICK-FIL-A HAS A NATIONAL ACCOUNT WITH TOM BARROW COMPANY FOR THE AIR DOORS. THE MECHANICAL CONTRACTOR SHALL PURCHASE THE AIR DOORS DIRECTLY FROM TOM BARROW COMPANY. CONTACT MR. SCOTT GEORGE AT 404-351-1010, FOR PRICING AND AVAILABILITY. AIR DOORS NOT PURCHASED THRU TOM BARROW COMPANY WILL NOT BE ACCEPTED.

REMARKS:

- FACTORY PROVIDED, WIRED AND UNIT MOUNTED SPEED CONTROLLER LOCATED ABOVE CEILING.
- FACTORY WIRED DISCONNECT.
- FACTORY PROVIDED, FIELD INSTALLED BY MC. REMOTE WALL SWITCHES FOR HEATING ON/OFF AND FAN ON/AUTO. SEE DETAIL. AIR CURTAIN WIRING DIAGRAM.
- FACTORY PROVIDED MAGNETIC DOOR CONTACT WITH FACTORY INSTALLED LOW VOLTAGE CONTROLS LOCATED IN AIR DOOR CABINET.
- PROVIDE WITH DIVERTER BOX. PROVIDE WITH MOUNTING BRACKETS PER MANUFACTURER'S RECOMMENDATION. INSTALL 6" FROM THE WALL.

AIR BALANCE SCHEDULE

MARK	SUPPLY AIR	RETURN AIR	OUTSIDE AIR	EXHAUST AIR	BUILDING POSITIVE PRESSURE
AC#1	3,800	2,925	875		
AC#2 (NEW)	9,100	7,100	2,000		
AC#3	3,400	2,615	785		
AC#4 (NEW)	1,500	1,150	300		
EF#1				1,913	
EF#2				701	
EF#3 (NEW)				300	
EF#4				701	
TOTALS:	17,800	13,790	4,010	3,615	+395

NOTES:

- CONTRACTOR SHALL REBALANCE AIR CONDITIONING SYSTEMS TO VALUES LISTED ABOVE.

DUCTLESS SPLIT SYSTEM

UNIT MARK	SERVICE	LOCATION	SEER	EER	INDOOR UNIT					FAN DATA	ELECTRICAL SERVICE					UNIT NUMBER	LOCATION	OUTDOOR UNIT					REMARKS		
					COOLING DATA						CFM 3-SPEED	MCA	MOC/P	VOLTS	PH			HZ	ELECTRICAL SERVICE						
					TOTAL MBH	SENSIBLE MBH	INDOOR TEMP DB(F)	OUTDOOR TEMP DB(F)	WB(F)										MCA	MOC/P	VOLTS	PH		HZ	
AC#5	DRIVE-THRU	DRIVE-THRU	16.2	12.0	33.5	23.8	75	64	95	635-73-830	1.0	--	208	1	60	MITSUBISHI / PKA-A36KA7	CU#5	ROOFTOP	28.0	40	208	1	60	MITSUBISHI / PUZ-HA36NHA5	1,2,3,4,5,6,7,8

NOTES:

- INDOOR UNIT SHALL BE STANDARD COLOR: WHITE
- PROVIDE WITH INDOOR MOUNTING BRACKET. COORDINATE WITH ARCHITECT FOR SUPPORT BLOCKING IN WALL.
- PROVIDE WITH CLEANABLE FILTERS.
- INDOOR UNIT IS POWERED FROM OUTDOOR UNIT.
- PROVIDE WALL-MOUNTED THERMOSTAT MODEL PAR-CT01MAU-SB ON WALL, NEXT TO POWERED AIRE DOOR CONTROL PANEL. MC TO PROGRAM THERMOSTAT TO MATCH ADJACENT AIR SYSTEM SETPOINTS.
- PROVIDE DRAIN PAN OVERFLOW SENSOR WIRED TO SHUT DOWN UNIT IN CASE OF DETECTION OF INCREASED WATER LEVEL IN DRAIN PAN.
- PROVIDE 208/230V MAXIBLUE CONDENSATE PUMP W/RESERVOIR AND SENSOR, IF GRAVITY FLOW TO DRAIN IS NOT FEASIBLE.
- PROVIDE PAC-SE55RA-E CONNECTOR AT INDOOR UNIT CONNECTOR CN32, WIRE ORANGE AND RED WIRES TO SPARE POLE ON R-1 RELAY IN SUNCOAST T-500 PANEL (TERMINALS 11 & 7, RESPECTIVELY) AND CAP THE BROWN WIRE.



Chick-fil-A

5200 Buffington Road
Atlanta, Georgia
30349-2998



www.cphcorp.
A Full Service
A & E Firm
Plans Prepared By
CPH Consulting, LLC.
State of Georgia License:
Engineer No. PEF006331
Surveyor No. LSF000870
Architect No. N/A
Landscape No. N/A



CHICK-FIL-A
PERIMETER POINTE
1145 MOUNT VERNON HWY
SANDY SPRINGS, GA 30338

SRI#00636

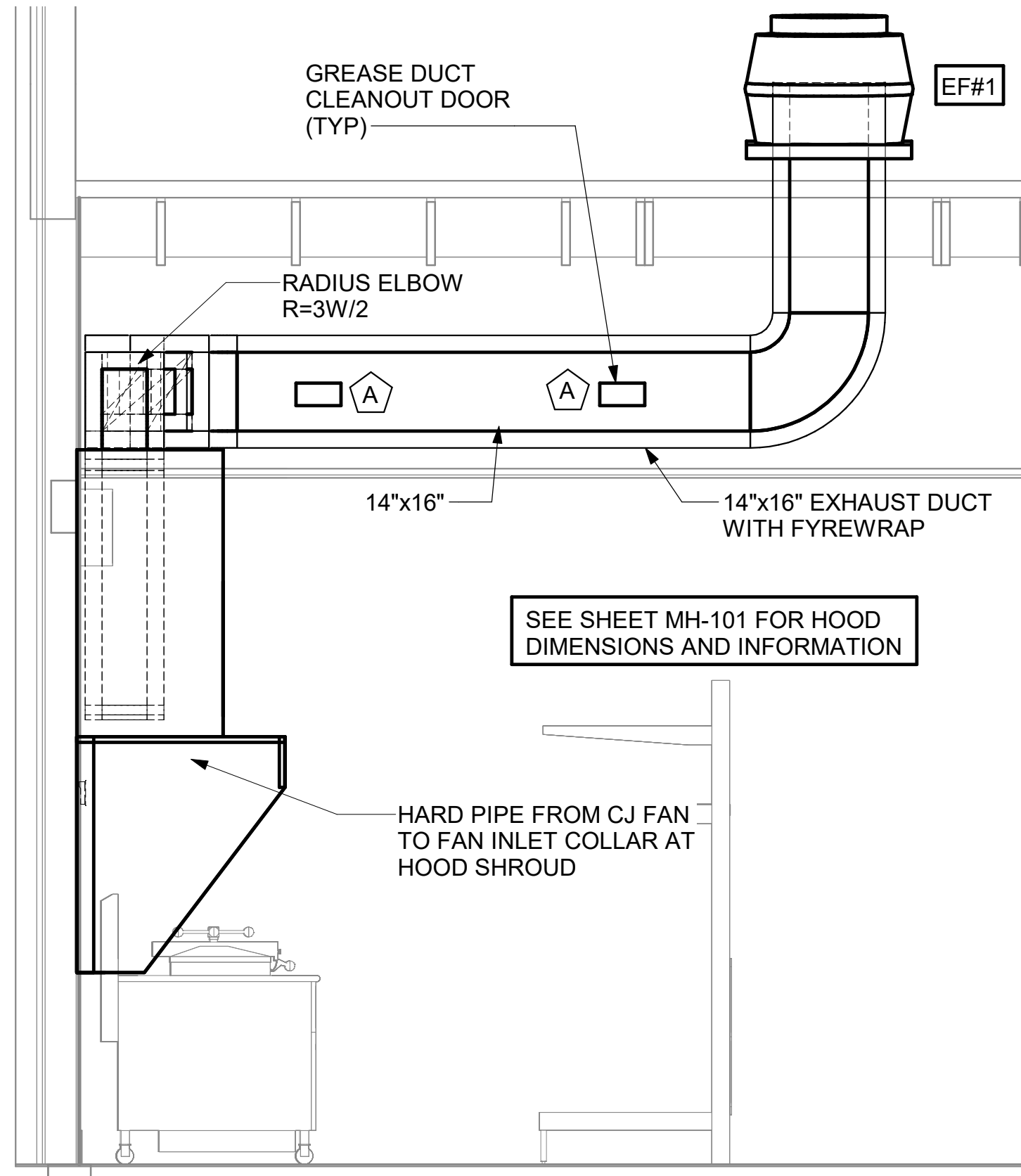
BUILDING TYPE / SIZE: SRI 575
RELEASE: 23.11

CONSTRUCTION

NO.	DATE	DESCRIPTION
1	07/12/2024	Permit Set
1	11/01/2024	Permit Rev 1
1	11/02/2024	Bid
1	12/20/2024	Const

CONSULTANT PROJECT # C29159
DATE 07/12/2024
DRAWN BY JRH
Information contained on this drawing and all digital files produced for above named project may not be reproduced in any manner without express written or verbal consent from authorized project representatives.
SHEET HVAC SCHEDULES
SHEET NUMBER

M-402



KITCHEN HOOD SYSTEMS NOTES

- CHICK-FIL-A MAINTAINS A NATIONAL ACCOUNT WITH HALTON CO. FOR THE HOODS. CHICK-FIL-A WILL PURCHASE AND PROVIDE THE HOODS FOR INSTALLATION BY THE MECHANICAL CONTRACTOR. THE MECHANICAL CONTRACTOR SHALL BE RESPONSIBLE FOR RECEIVING THE HOODS. CONTACT HALTON CO. AT 270-237-5600 FOR MORE INFO.
- THE FIRE SUPPRESSION SYSTEM SHALL CONSIST OF A COMPLETE WET SYSTEM FURNISHED BY HALTON. THE HOOD SHALL BE FURNISHED PRE-PIPED BY HALTON.
- THE FIRE SUPPRESSION SYSTEM EXTERNAL TO THE HOODS SHALL BE INSTALLED IN ACCORDANCE WITH HOOD MANUFACTURER'S SHOP DRAWINGS BY AN AUTHORIZED SYSTEM INSTALLER HIRED BY HALTON.
- HOOD EXHAUST DUCTWORK SHALL BE 16 GA. BLACK STEEL WITH CONTINUOUS LIQUID TIGHT WELD OF JOINTS & SEAMS.
- URNS IN GREASE EXHAUST DUCTWORK SHALL BE LONG RADIUS TYPE, WITH A CENTERLINE RADIUS R=3W/2, NO EXCEPTIONS ALLOWED. NO MITERED FITTINGS ALLOWED.
- ALL STAINLESS STEEL CLOSURE PANELS SHALL BE SUPPLIED BY HOOD MANUFACTURER AND INSTALLED BY THE MECHANICAL CONTRACTOR ACCORDING TO MANUFACTURER'S RECOMMENDATIONS.
- SLOPE ALL GREASE EXHAUST DUCT BACK TO HOOD AT 1/4" PER FOOT OF RUN.
- WRAP NEW GREASE DUCT WITH UNIFRAX FYREWAP. INSULATION ON ACCESS DOORS SHALL BE INSTALLED ACCORDING TO MANUFACTURER'S INSTALLATION RECOMMENDATIONS. UNIFRAX FYREWAP PRODUCT USED SHALL MEET LOCAL CODE REQUIREMENTS.
- SUPPORT HOODS WITH THREADED ROD AT EACH FACTORY SUPPORT POINT. EACH SUPPORT POINT MUST SUPPORT THE HOOD WEIGHT EQUALLY. ATTACH TO STRUCTURE AS DETAILED ON STRUCTURAL DRAWINGS.

GREASE EXHAUST DUCT CLEARANCE NOTE

CLEARANCES ABOVE CEILING ARE TIGHT. MECHANICAL CONTRACTOR TO FIELD VERIFY EXACT ROUTING AND CLEARANCES PRIOR TO FABRICATING GREASE EXHAUST DUCT.

CAPTURE JET NOTE

REFER TO "CAPTURE-JET FAN INSTALLATION AND DIMENSIONAL DATA" SCHEDULE ON HALTON SHOP DRAWINGS (SHEET MH-101) FOR INFORMATION ON CAPTURE JET FAN.

HOOD ELEVATION NOTE

SEE DETAILS ON HALTON SHOP DRAWINGS ON SHEET MH-101 FOR DETAILS ON ELEVATION, STANDOFFS, CLEARANCES, AND HOOD CONSTRUCTION.

CLEANOUT DOOR NOTE

DUCT WRAP SHALL BE APPLIED TO THE CLEANOUT DOOR PER THE WRAP MFR'S INSTALLATION INSTRUCTIONS. NO EXCEPTIONS. ALSO, THE CLEANOUT DOOR MUST BE REMOVABLE WITHOUT TOOLS AND MUST BE CLEARLY AND PERMANENTLY LABELED.

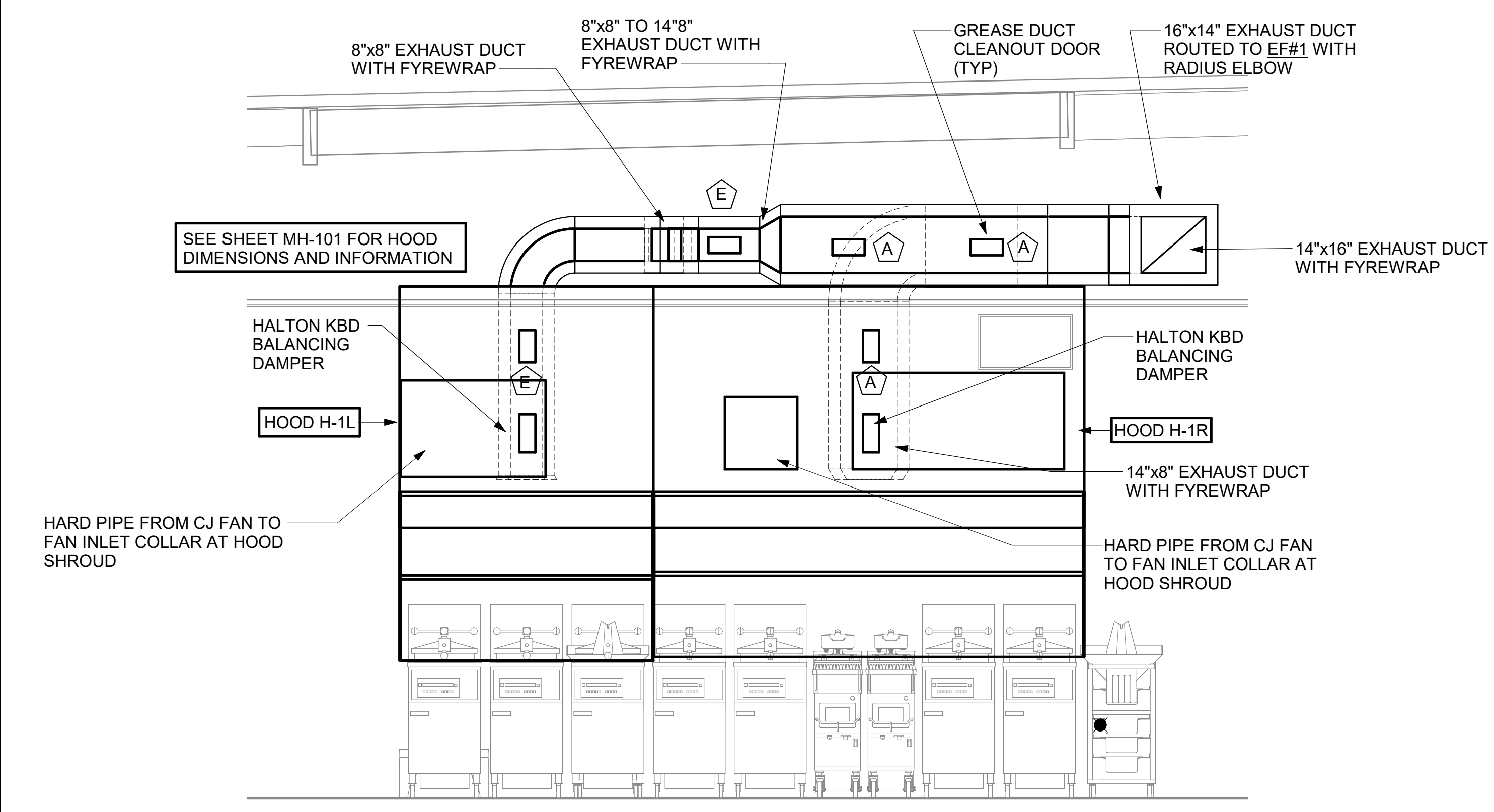
HOOD COMBUSTIBLE CLEARANCE NOTE

ALL NEW HOODS SHALL BE RATED WITH ONE INCH THICK LAYER OF FACTORY INSTALLED INSULATION TO MEET "ZERO INCH CLEARANCE" TO COMBUSTIBLE MATERIALS. HOOD SHALL BE CERTIFIED BY ETL SPECIFICATIONS, AND SHALL CONFORM TO UL STANDARD 710, BUILT PER NFPA 96 SECTION 4.2.2., AND NSF LISTED.

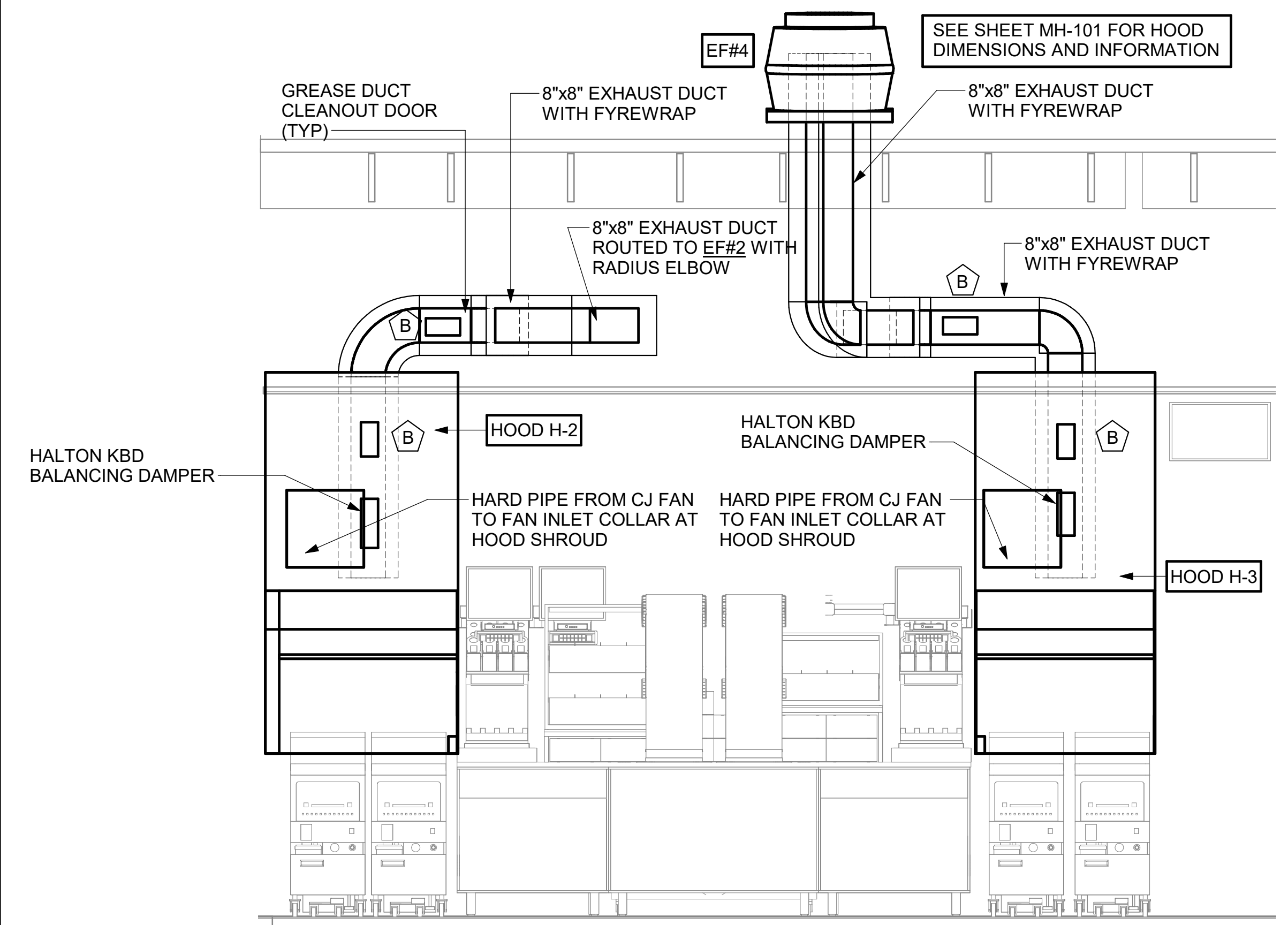
H.E.S.S. SYSTEM NOTE

MECHANICAL CONTRACTOR TO PROVIDE AND INSTALL SUNCOAST H.E.S.S. SYSTEM FOR ALL NEW HOODS. SEE FAN AND EQUIPMENT INTERLOCK WIRING DIAGRAM ON SHEET M-501

5 HOOD H-1L AND H-1R GREASE EXHAUST DUCT UP TO EXHAUST FAN
1/2" = 1'-0"



4 HOOD H-1L AND HOOD H-1R ELEVATION
1/2" = 1'-0"



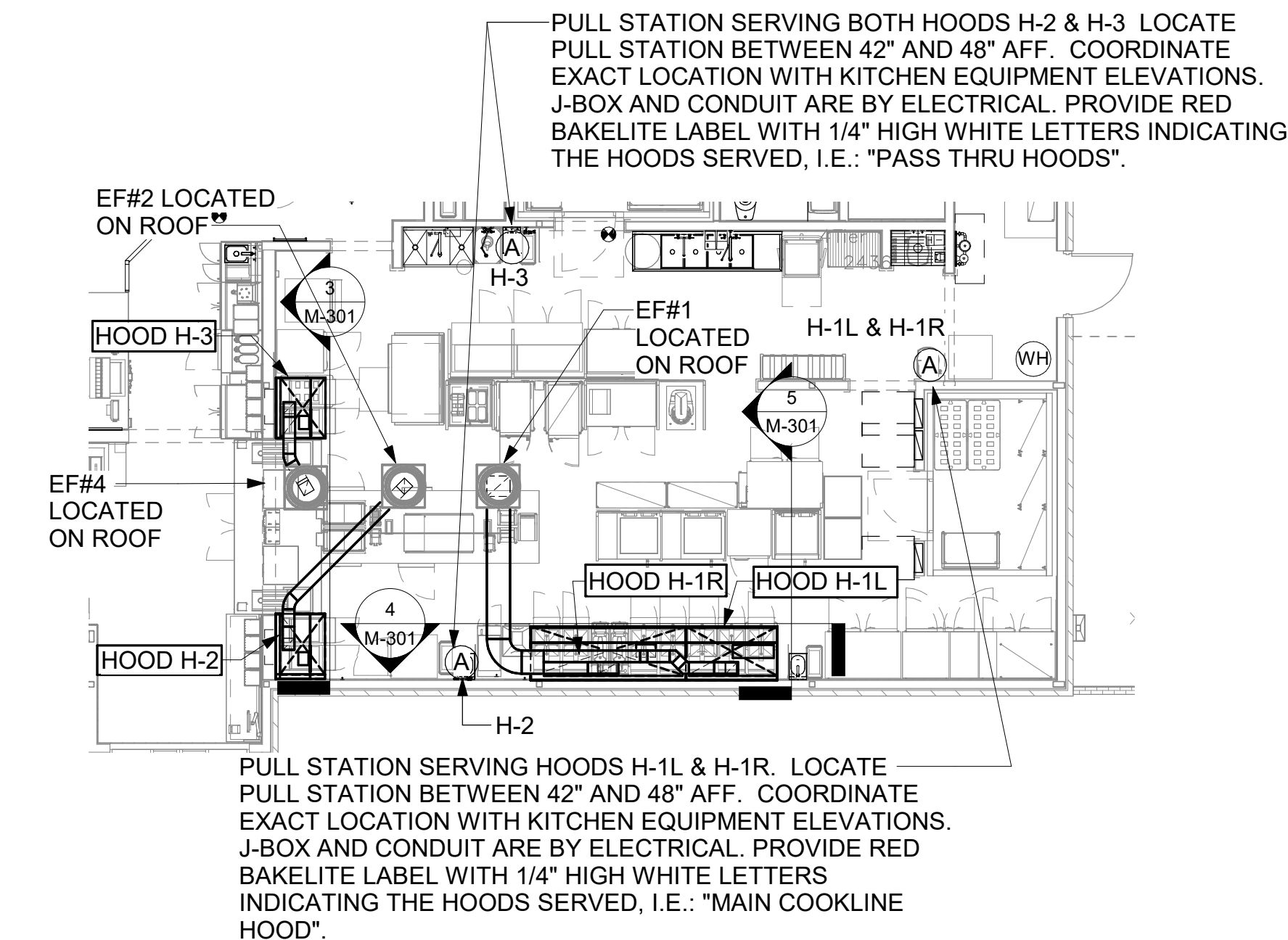
3 HOOD H-2 AND HOOD H-3 ELEVATION
1/2" = 1'-0"

HOOD SCHEDULE

MARK	EXHAUST CFM	SP @ TAB PORT	CAPTURE JET CFM & S.P.	TYPE	COLLAR SIZE	WIDTH	DEPTH	HEIGHT	MANUFACTURER	MODEL	REMARKS
HOOD H-1R	1204	0.13	80 @ 0.30"	BACK-SHELF	14"x8"	107	37	38	HALTON	KVL-2-IC	1,2,3,4,5,7,8,9,12,17,21,23
HOOD H-1L	709	0.13	47 @ 0.30"	BACK-SHELF	8"x8"	63	37	38	HALTON	KVL-2-IC	1,2,3,5,7,8,9,12,21,22
HOOD H-2	701	0.30	30 @ 0.29"	BACK-SHELF	8"x8"	42	34	38	HALTON	KVL-C-IC	1,2,3,6,7,8,9,10,12,13,15,17,18,21
HOOD H-3	701	0.30	30 @ 0.29"	BACK-SHELF	8"x8"	42	34	38	HALTON	KVL-C-IC	1,2,3,6,7,8,9,11,12,13,16,21

NOTES
DIMENSIONS OF HOODS INCLUDE BACK AND SIDE SPACERS (HEIGHT DOES NOT INCLUDE CLOSURE PANELS).
TYPICAL INSTALLATION FOR NEW HOODS. FIELD VERIFY & COORDINATE WITH HOOD DRAWINGS BY HALTON. REFER TO SHEET MH-101 & MH-102 PRIOR TO BID & CONSTRUCTION.

REMARKS
1. STAINLESS STEEL CONSTRUCTION.
2. PROVIDE FULL HEIGHT SS CLOSURE PANEL WITH ACCESS PANEL IN FRONT LARGE ENOUGH TO REMOVE CAPTURE JET FAN. SERVICE FIRE SUPPRESSION COMPONENTS, AND/OR TO ACCESS KBD EQUALIZER JACK SCREW.
3. PROVIDE PRE-PIPED WET FIRE EXTINGUISHING SYSTEM.
4. FIRE SUPPRESSION CABINET AND COMPONENTS ABOVE HOOD ON RIGHT SIDE.
5. PROVIDE 3" ZERO CLEARANCE TO COMBUSTIBLE BACK SPACER.
6. PROVIDE 3" ZERO CLEARANCE TO COMBUSTIBLE CUSTOM BACK SPACER TO ACCOMMODATE PIN AND SLEEVE ELECTRICAL BOX.
7. PROVIDE EQUIPMENT I.D. LABELS LOCATED ON FRONT LEADING EDGE OF HOOD.
8. PROVIDE FACTORY WALL MOUNTING ANGLE AT TOP OF HOOD.
9. PROVIDE TOP PLENUM CAPTURE JET FAN, SPEED CONTROLLER AND COLLAR.
10. PROVIDE FACTORY INSTALLED INTEGRAL SIDE JET ARM ON RIGHT END.
11. PROVIDE FACTORY INSTALLED INTEGRAL SIDE JET ARM ON LEFT END.
12. PROVIDE CAPTURE JET AIR INLET AND COLLAR AT FRONT OF CLOSURE PANEL.
13. PROVIDE PIN AND SLEEVE ELECTRICAL BOX (DOUBLE CONNECTION). SEE ARCH. AND ELEC. DRAWINGS FOR ADDITIONAL INFORMATION.
14. PROVIDE PIN AND SLEEVE ELECTRICAL BOX (SINGLE CONNECTION). SEE ARCH. AND ELEC. DRAWINGS FOR ADDITIONAL INFORMATION.
15. PROVIDE 3" ZERO CLEARANCE TO COMBUSTIBLE LEFT SIDE SPACER.
16. PROVIDE NOTCHED LEFT END SIDE PANEL.
17. PROVIDE NOTCHED RIGHT END SIDE PANEL.
18. PROVIDE 3"x3" HORIZONTAL AND VERTICAL TRIM ANGLE FOR LEFT SIDE OF HOOD TO FINISH OFF GAP AT WALL.
19. PROVIDE FULL LEFT END SIDE PANEL.
20. PROVIDE FULL RIGHT END SIDE PANEL.
21. PROVIDE HALTON KBD EQUALIZER.
22. CONTINUOUS CAPTURE INTERNAL RIGHT END CUTOUT.
23. CONTINUOUS CAPTURE INTERNAL LEFT END CUTOUT.

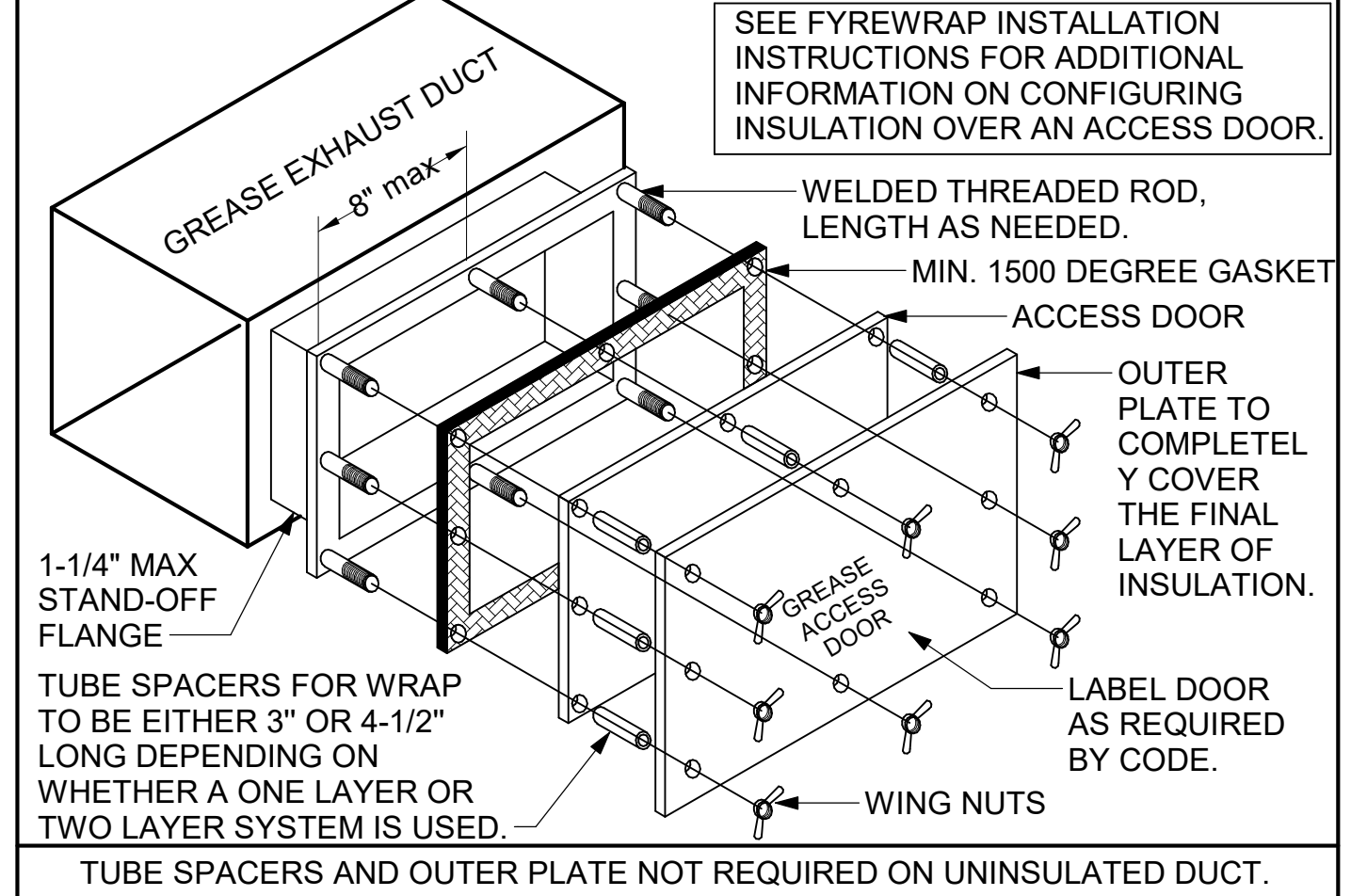


2 HOOD LAYOUT AND AMEREX PULL STATION LOCATIONS
1/8" = 1'-0"

GREASE ACCESS DOOR SCHEDULE

MARK	OPENING SIZE	DOOR SIZE	REMARKS
A	9H X 14W	11H X 16W	1
B	5.5H X 14W	7.5H X 16W	1
C	12H X 12W	14H X 14W	1
D	10H X 14W	12H X 16W	1
E	6H X 14W	8H X 16W	1

1. ACCESS DOORS SHALL BE U.L. 1978 LISTED OR FIELD FABRICATED, REQUIRE NO TOOLS FOR REMOVAL AND MEET THE REQUIREMENTS OF THE CURRENT EDITION OF THE IMC. ACCESS DOOR ASSEMBLY SHALL BE WELDED IN PLACE TO THE GREASE EXHAUST DUCT AND THE ACCESS DOOR SHALL BE SECURED WITH THUMB SCREWS. ACCESS DOORS SHALL BE SEALED WITH A MINIMUM 1500 DEGREE GASKET MATERIAL EQUIVALENT TO THAT MANUFACTURED BY BRENTON INDUSTRIES, INC (800) 382-2491.



1 GREASE ACCESS DOOR SCHEDULE
1/4" = 1'-0"



Chick-fil-A
5200 Buffington Road
Atlanta, Georgia
30349-2998



www.cphcorp.
A Full Service A & E Firm
Plans Prepared By
CPH Consulting, LLC.
State of Georgia License:
Engineer No. PEF006331
Surveyor No. LSF000870
Architect No. N/A
Landscape No. N/A



CHICK-FIL-A
PERIMETER POINTE
1145 MOUNT VERNON HWY
SANDY SPRINGS, GA 30338

SRI#00636

BUILDING TYPE / SIZE: SRI 575
RELEASE: 23-11

CONSTRUCTION

NO.	DATE	DESCRIPTION
1	07/12/2024	Permit Set
1	11/01/2024	Permit Rev 1
1	11/02/2024	Bid
1	12/20/2024	Const

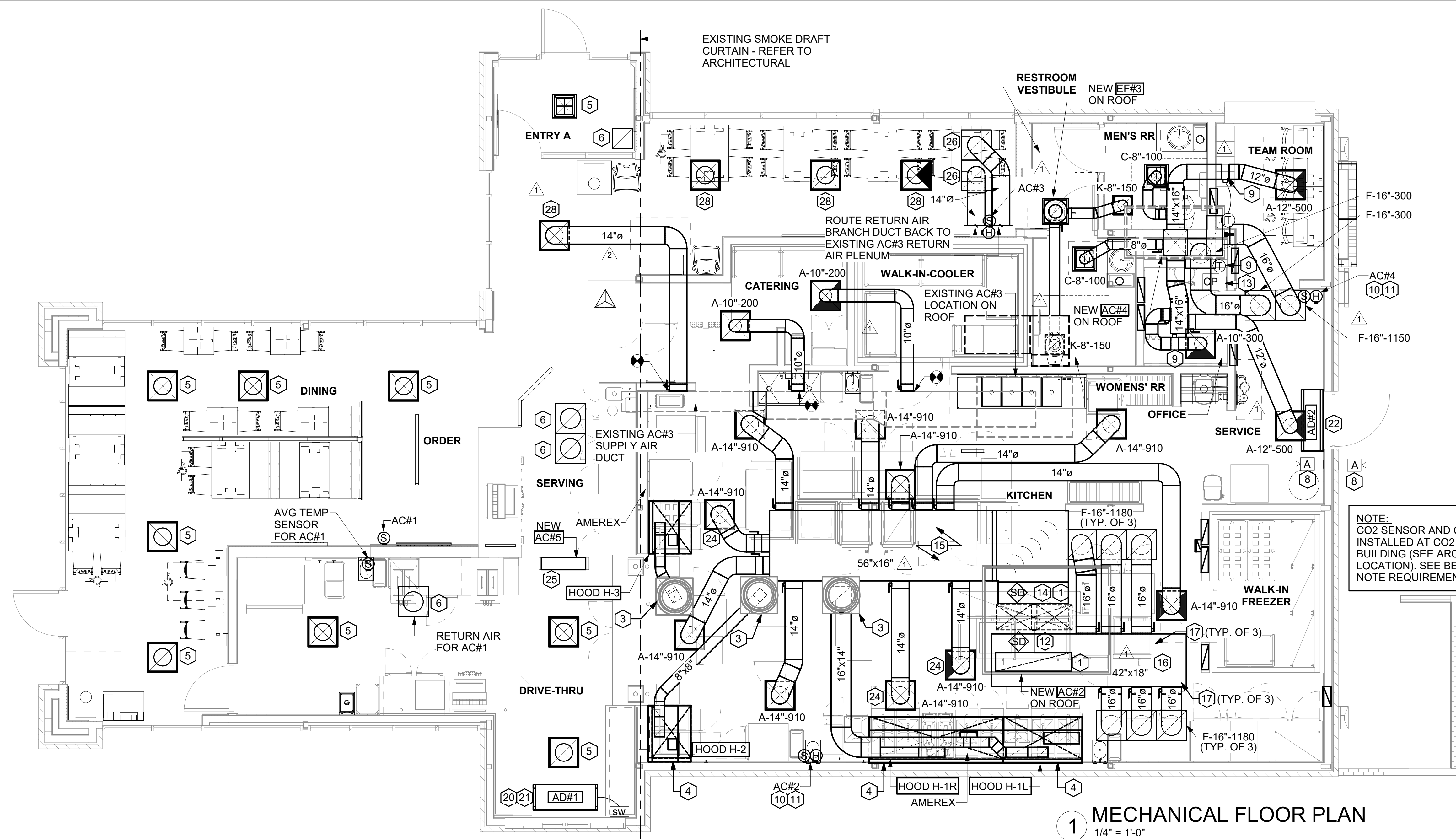
REVISION SCHEDULE

CONSULTANT PROJECT # C26159
DATE 07/12/2024

DRAWN BY JRH
Information contained on this drawing and all digital files produced for above named project may not be reproduced in any manner without the prior written or verbal consent from the original project representation.
SHEET HOOD DETAILS AND SCHEDULES

For Construction

M-301



LEGEND			
A-12-400	TYPE - NECK SIZE - CFM	EF#1	EXHAUST FAN #1 (TYP.)
(S)	REMOTE TEMPERATURE SENSOR	△	PULL STATION
(H)	HUMIDITY SENSOR	▽	RETURN/EXHAUST
(A-H)	STROBE AUDIO/VISUAL ALARM-ANNUNCIATOR	⊗	SUPPLY DIFFUSER (TYP.)
12x18	DUCT SIZE (REVERSE FOR ELEVATION VIEWS) 1ST NUMBER - HORIZONTAL DIMENSION 2ND NUMBER - VERTICAL DIMENSION	①	PLAN NOTE REFERENCE
AC#1	AIR CONDITIONING UNIT #1 (TYP.)	CF	CIRCULATING FAN
→	MANUAL VOLUME DAMPER	SD	SMOKE DETECTOR
CO2	CO2 SENSOR	AD#1	AIR DOOR#1 (TYP.)
		CP	CONTROL PANEL

FLEX DUCT SIZE			
RANGE	SIZE	RANGE	SIZE
0 - 80 CFM	6" DIA.	511 - 750 CFM	14" DIA.
81 - 170 CFM	8" DIA.	701 - 1100 CFM	16" DIA.
171 - 300 CFM	10" DIA.	1101 - 1450 CFM	18" DIA.
301 - 510 CFM	12" DIA.	1451 - 1900 CFM	20" DIA.

NOTES:
 1. BASED ON WIRE HELIX FLEXIBLE DUCT, TYPE FLEX-MASTER.
 2. UL LISTING: UL 181 ETL CLASS 1 AIR DUCT.
 3. STANDARD CODE: NFPA 90A AND 90B, BOCA, SBCC HUD/FHA, MIN PROPERTY STD.
 4. FLAME SPREAD: LESS THAN 25.
 5. SMOKE DEVELOP.: LESS THAN 50.
 6. MIN R6.0 FOR ATTIC/UNCONDITIONED SPACE.
 MANUFACTURER IS TO BE USED AS A BASIS FOR DESIGN. CONTACT ENGINEER OF RECORD TO SUBMIT ON APPROVED EQUALS.

NOTE:
 REFER TO SCHEDULES AND DETAILS MECHANICAL SHEET FOR FURTHER INFORMATION.

NOTE:
 MECHANICAL CONTRACTOR TO PROVIDE TEST AND BALANCE REPORT BEFORE FINAL INSPECTION.

NOTE:
 ALL NEW HOODS SHALL BE RATED WITH ONE INCH THICK LAYER OF FACTORY INSTALLED INSULATION TO MEET "ZERO INCH CLEARANCE" TO COMBUSTIBLE MATERIALS. HOOD SHALL BE CERTIFIED BY ETL SPECIFICATIONS, AND SHALL CONFORM TO UL STANDARD 710, BUILT PER NFPA 96 SECTION 4.2.2., AND NSF LISTED. REFER TO SHEET MH-101.

NOTE:
 IF BALANCING DAMPERS ARE NOT EXISTING IN THE BRANCH DUCT OR AT THE TAKE-OFF, MECHANICAL CONTRACTOR SHALL SUPPLY AND INSTALL NEW BALANCING DAMPERS WITHIN THE BRANCH DUCT (TYPICAL).

NOTE:
 GENERAL CONTRACTOR TO HIRE REFRIGERATION CONTRACTOR TO RECLAIM REFRIGERANT FROM EXISTING FREEZER/COOLER ICE MAKERS AND RECHARGE EXISTING ICE MAKERS AFTER EQUIPMENT IS REINSTALLED. REFER TO KEY NOTES #2 AND #5 ON SHEET M-101.

HVAC GENERAL NOTES

- DUCT SIZES SERVING DIFFUSERS AND GRILLES ARE SAME SIZE AS DIFFUSER OR GRILLE NECK UNLESS NOTED OTHERWISE.
- MECHANICAL CONTRACTOR SHALL BALANCE HVAC SYSTEM AS SHOWN ON THE PLAN & RTU SCHEDULE. IF AIRFLOWS DIFFER BY MORE THAN 5%, CONTACT CFA CONSTRUCTION MANAGER.
- NO PIPING OR DUCTWORK ALLOWED ABOVE ANY ELECTRICAL/CONTROL PANELS.
- COORDINATE NEW WORK WITH EXISTING CONDUITS, STRUCTURE, & PIPING. FIELD VERIFY EXISTING CONDITIONS PRIOR TO COMMENCING WORK. CONTRACTOR TO NOTIFY DESIGN TEAM WITHOUT DELAY IF ACTUAL LOCATION OF EXISTING MECHANICAL EQUIPMENT DOES NOT MATCH FLOOR PLAN.
- CONTRACTOR SHALL CLEAN & REFURBISH ALL EXISTING DUCTWORK. PATCH & REPAIR OPENING AIR TIGHT OF EXISTING DUCTWORK AS REQUIRED (TYPICAL ALL). FIELD VERIFY AND COORDINATE ALL EXISTING HVAC SIZES, LOCATIONS, AND CONDITION PRIOR TO BID.
- REUSE AND REWORK EXISTING HVAC DUCTWORK. PROVIDE NEW SECTION FOR RECONNECTION AS REQUIRED. FIELD VERIFY ALL REQUIREMENTS PRIOR TO BID.
- CONTRACTOR SHALL BALANCE, INSPECT, REPAIR, OR REPLACE AS NECESSARY IF REQUIRED FOR EXISTING CEILING OR SIDEWALL MOUNTED AIR DEVICES TO REMAIN. FIELD VERIFY AND COORDINATE EXACT SIZE, AIR QUANTITY, LOCATION, AND CONDITION PRIOR TO BID. AIR FLOW SHALL REMAIN AS IS UNLESS NOTED ON PLAN, OR DIRECTED BY CONSTRUCTION MANAGER. ANY DEFICIENCIES OR DISCREPANCIES SHALL BE REPORTED TO ARCHITECT/ENGINEER IMMEDIATELY. COORDINATE AIR BALANCE RESULTS WITH CONSTRUCTION MANAGER.
- FLEXIBLE DUCT NOT SHOWN FOR CLARITY. ALL TAKE-OFFS SHALL INCLUDE FLEXIBLE DUCT. SEE DETAIL 1/M-401 FOR FLEXIBLE DUCT INSTALLATION REQUIREMENTS.
- UNLESS NOTED OTHERWISE, MC TO ADJUST ALL DIFFUSER AIR PATTERN DEFLECTORS TO THROW HORIZONTALLY ALONG THE CEILING.
- SUPPORT ALL DUCT DROPS AT BASE OF DROP FROM STRUCTURE.

HVAC KEY NOTES

- TRANSITION IN VERTICAL DROP FROM FULL SIZE OF CURB OPENING TO SIZE SHOWN. TRANSITION WITHIN CURB WHERE REQUIRED TO AVOID STRUCTURE. NO TURNING VANES IN ELBOW, FOR RETURN AIR ONLY.
- NOTE NOT USED.
- PROVIDE NEW KITCHEN HOOD EXHAUST FAN WITH NEW CURB LOCATION SHOWN ON PLAN. LOCATE A MINIMUM OF 10 FT FROM PARAPET WALLS OR FROM ANY NEW OR EXISTING OUTSIDE AIR INTAKE. COORDINATE EXACT LOCATION IN FIELD WITH EXISTING EQUIPMENT AND PIPING. SEE DETAIL ON M-401 FOR ORIENTATION OF HINGE SIDE OF FAN ON CURB.
- CJ-3 MOUNTED INSIDE CABINETS SERVING SCJ PLENUM. SEE DETAIL ON MH-101.
- NEW SUPPLY AIR DIFFUSERS. CONTRACTOR SHALL EXTEND EXISTING SUPPLY AIR DUCT AS REQUIRED. CFM IS EXISTING TO REMAIN.
- NEW RETURN AIR GRILLES. CONTRACTOR SHALL EXTEND EXISTING RETURN AIR DUCT AS REQUIRED. CFM IS EXISTING TO REMAIN.
- STRONG SYSTEMS SHALL SUPPLY AND INSTALL CO2 SENSOR ANALOX-A60 IN THE STORAGE ROOM ADJACENT TO THE REFUSE CONTAINER. SENSOR SHALL BE MOUNTED AT 12" AFF WITH SPLASH GUARD AND CAGE. ELECTRICAL CONTRACTOR TO PROVIDE SINGLE-GANG J-BOX WITH 1/2" CONDUIT EXTENDED TO ABOVE ACCESSIBLE CEILING SPACE. INSTALL PER MANUFACTURER'S RECOMMENDATIONS AND PER LOCAL CODE REQUIREMENTS PRIOR TO BID AND CONSTRUCTION. FOR MORE INFORMATION CONTACT: STRONG SYSTEMS INTERNATIONAL, INC. CHRIS VERCH (770) 729-1199 OR (770) 462-2501.
- STRONG SYSTEMS SHALL SUPPLY AND INSTALL CO2 ANNUNCIATOR MOUNTED AT 60" AFF. ELECTRICAL CONTRACTOR TO PROVIDE SINGLE-GANG J-BOX WITH 1/2" CONDUIT EXTENDED TO ABOVE ACCESSIBLE CEILING SPACE. INSTALL PER MANUFACTURER'S RECOMMENDATIONS AND PER LOCAL CODE. FIELD VERIFY EXACT LOCATION AND ALL REQUIREMENTS PRIOR TO BID AND CONSTRUCTION. FOR MORE INFORMATION CONTACT: STRONG SYSTEMS INTERNATIONAL, INC. CHRIS VERCH (770) 729-1199 OR (770) 462-2501.

- YOUNG REGULATOR ROUND ZONE DAMPER WITH MODEL T-312CE AUTOMATIC CHANGE-OVER THERMOSTAT. MOUNT CENTER OF TSTAT AT 4'-0" AFF. POWER OPEN/SPRING CLOSE. ADJUST MECHANICAL LIMIT FOR 75 CFM MINIMUM AIRFLOW. PROVIDE 120V/24V, 50 VA TRANSFORMER TO SERVE ZONE DAMPER ACTUATOR AND THERMOSTAT. POWERED FROM 120V POWER CIRCUIT THAT REMAINS LIVE 24/7. PROVIDE ALL NECESSARY WIRING AND COMPONENTS FOR CONTROL AND POWER CONNECTIONS PER MANUFACTURER'S IOM. THERE IS NO INTERLOCKING/ MONITORING FROM THE S.E.C. CFA-500 PANEL. SEE WIRING DIAGRAMS ON M-501. CHICK-FIL-A HAS A NATIONAL ACCOUNT W/ WITH TOM BARROW COMPANY FOR THE ZONE DAMPER. THE MECHANICAL CONTRACTOR SHALL PURCHASE THE ZONE DAMPER DIRECTLY FROM TOM BARROW COMPANY. CONTACT MR. SCOTT GEORGE AT 404-351-1010. FOR PRICING AND AVAILABILITY. ZONE DAMPERS NOT PURCHASED THRU TOM BARROW COMPANY WILL NOT BE ACCEPTED.
- MOUNT NEW/EXISTING LENNOX HUMIDITY SENSOR ON WALL ABOVE SPACE TEMP SENSOR AND ROUTE WIRING TO UNIT ON ROOF. PROVIDE NEW CONTROL WIRE TO ACCOMMODATE LOCATION, DO NOT SPLICE WIRE.
- MOUNT NEW REMOTE TEMPERATURE SENSOR ON WALL AT 60" AFF AND ROUTE NEW WIRING BACK TO TEMP CONTROL PANEL. FOR SENSOR SERVING KITCHEN AC#2, COORDINATE EXACT LOCATION WITH KITCHEN EQUIPMENT PRIOR TO BID AND CONSTRUCTION.
- PROVIDE A LENNOX FACTORY INSTALLED SUPPLY SIDE & RETURN SIDE SMOKE DETECTORS. REFER TO SCHEDULE ON SHEET M-402 AND LENNOX SMOKE DETECTOR AND ANNUNCIATOR WIRING DIAGRAM ON SHEET M-501.
- STRONG SYSTEMS SHALL SUPPLY AND INSTALL CO2 CENTRAL CONTROL UNIT MOUNTED AT 60" AFF. ELECTRICAL CONTRACTOR TO PROVIDE SINGLE-GANG J-BOX WITH 1/2" CONDUIT EXTENDED TO ABOVE ACCESSIBLE CEILING SPACE. INSTALL PER MANUFACTURER'S RECOMMENDATIONS AND PER LOCAL CODE. FIELD VERIFY EXACT LOCATION AND ALL REQUIREMENTS PRIOR TO BID AND CONSTRUCTION. COORDINATE WITH ELECTRICAL DRAWING E2.2 FOR EXACT LOCATION. FOR MORE INFORMATION CONTACT: STRONG SYSTEMS INTERNATIONAL, INC. CHRIS VERCH (770) 729-1199 OR (770) 462-2501.
- (2) 28x20 SUPPLY AIR RTU DROP AND (1) 60x15 RETURN AIR DROP FROM NEW KITCHEN AC#2.
- SUPPLY AIR DUCT ROUTED BELOW BAR JOIST AS HIGH AS POSSIBLE. BRANCH TAKE-OFFS ARE NOT TO BE LOCATED CLOSER THAN 3'-0" FROM ANY OFFSET OR ELBOW, INCLUDING THE SA DROP FROM THE CURB.
- 42"x18" RETURN AIR PLENUM AS CLOSE AS POSSIBLE TO BOTTOM OF ROOF JOIST.
- 16"Ø SIDE TAP RETURN AIR PLENUM WITH SPIN-IN FITTINGS AND DAMPER. REFER TO AIR DEVICE SCHEDULE FOR FURTHER INFORMATION.
- CONTRACTOR SHALL INSTALL AND ROUTE NEW INSULATED REFRIGERANT PIPING FROM ROOF MOUNTED REMOTE CONDENSER TO FREEZER & COOLER EVAPORATORS.

- NOTE NOT USED.
- AIR CURTAIN (AD#1) MOUNTED WITHIN CEILING CENTERED ABOVE DRIVE THRU DOOR 6" FROM THE EXTERIOR WALL. PROVIDE AIR DIVERTER CONE ABOVE DOOR FOR (AD#1). REFER TO SHEET M-401 FOR INFORMATION. ATTACH AIR CURTAIN TO STRUCTURE USING 3/8" ALL THREAD SUPPORTS.
- FIELD WIRE FACTORY PROVIDED CONTROLS. SEE KITCHEN ELEVATIONS FOR EXACT LOCATION OF SWITCH. MC IS RESPONSIBLE FOR ALL FINAL CONNECTIONS FOR LOW VOLTAGE INTERLOCK WITH TORMAX DOOR. REFER TO SHEET M-501 FOR INFORMATION.
- AIR DOOR MOUNTED OVER DOOR HEADER AT 7'-4" AFF TO BOTTOM OF UNIT. PROVIDE BLOCKING IN WALL BEHIND AIR CURTAIN. USE FACTORY PRE-PUNCHED MOUNTING HOLES ON BACK SIDE OF AIR CURTAIN ONLY. ATTACH AIR CURTAIN TO WALL USING 3/8" LAG BOLTS. LENGTH AS REQUIRED TO FULLY PENETRATE BLOCKING. LOCATE MAGNETIC CONTACT TYPE MICROSWITCH IN DOOR FRAME ON STRIKE SIDE.
- NOTE NOT USED.
- MECHANICAL CONTRACTOR TO ADJUST PATTERN DEFLECTORS TO THROW STRAIGHT DOWN.
- NEW SPLIT SYSTEM AIR HANDLER. COORDINATE LOCATION WITH KITCHEN EQUIPMENT CONTRACTOR AND ELECTRICAL CONTRACTOR.
- NEW RETURN AIR DEVICE. BALANCE TO 1305 CFM EACH.
- LOCATE NEW SENSOR(S) AT THIS LOCATION. REFER TO KEY NOTES #10 & #11 FOR INSTALLATION INFORMATION.
- NEW SUPPLY AIR DEVICE. CONTRACTOR SHALL EXTEND EXISTING SUPPLY AIR DUCT AS REQUIRED. BALANCE TO 750 CFM.
- NOTE NOT USED.
- EXISTING SUPPLY/RETURN TRUNK DUCT SHOWN FOR REFERENCE ONLY. VERIFY AC# AND LOCATION OF TRUNK DUCT.

- NOTE NOT USED.

1 MECHANICAL FLOOR PLAN
 1/4" = 1'-0"

Chick-fil-A
 5200 Buffington Road
 Atlanta, Georgia
 30349-2998

www.cphcorp.
A Full Service A & E Firm
 Plans Prepared By
CPH Consulting, LLC.
 State of Georgia Licenses:
 Engineer No. PEF006331
 Surveyor No. LSF000870
 Architect No. N/A
 Landscape No. N/A



CHICK-FIL-A
PERIMETER POINTE
 1145 MOUNT VERNON HWY
 SANDY SPRINGS, GA 30338

SRI#00636
 BUILDING TYPE / SIZE: SRI 975
 RELEASE: 23-11
 PRINTED FOR: CONSTRUCTION

REVISION SCHEDULE	
NO.	DESCRIPTION
1	11/01/2024 Permit Set
2	11/02/2024 Permit Rev 1
2	12/19/2024 Bid
2	12/20/2024 Bid Add 1
	Const

CONSULTANT PROJECT # C29159
 DATE 07/12/2024
 DRAWN BY JRH
 Information contained on this drawing and all digital files produced for above named project may not be reproduced in any manner without the written or verbal consent from authorized project representatives.
 SHEET MECHANICAL FLOOR PLAN
 SHEET NUMBER
M-201

For Construction

HVAC KEY NOTES

- 1 PROVIDE NEW ELECTRIC COOLING/ GAS HEATING ROOFTOP UNIT WITH PRE-FABRICATED, MINIMUM 1/4" INCH INSULATED ROOF CURB. MAINTAIN MINIMUM HEIGHT OF 8 INCHES FROM ROOF SURFACE. REFER TO HVAC SCHEDULE ON SHEET M31. FIELD VERIFY AND COORDINATE WITH STRUCTURAL AND ALL LOCAL AND STATE REQUIREMENTS PRIOR TO BID AND CONSTRUCTION.
- 2 FIELD VERIFY EXHAUST AIR MAINTAINS A 10 FOOT MINIMUM CLEARANCE FROM ANY FRESH AIR INTAKE AND COMPLIES WITH ALL CODE REQUIREMENTS.
- 3 MECHANICAL CONTRACTOR TO ADJUST PATTERN DEFLECTORS TO THROW STRAIGHT DOWN.
- 4 PROVIDE NEW AIR DEVICE. MAXIMUM LENGTH OF FLEXIBLE DUCT RUN-OUT IS 4 FEET, NO EXCEPTIONS. FIELD VERIFY & COORDINATE LOCATIONS PRIOR TO BID & CONSTRUCTION. RE-BALANCE AIR QUANTITY AS SHOWN ON PLAN. PROVIDE WITH MANUAL VOLUME DAMPER WITH ACCESSIBILITY. ANY DEFICIENCIES AND OR DISCREPANCIES SHALL BE REPORTED TO ARCHITECT/ENGINEER IMMEDIATELY.
- 5 PROVIDE NEW KITCHEN HOOD EXHAUST FAN REPLACING THE EXISTING FAN THROUGH THE EXISTING ROOF OPENING. LOCATE A MINIMUM OF 10 FT FROM PARAPET WALLS IF PARAPET IS LOWER THAN 42" OR FROM ANY NEW OR EXISTING OUTSIDE AIR INTAKE AS REQUIRED. COORDINATE EXACT LOCATION IN FIELD WITH EXISTING EQUIPMENT AND PIPING.
- 6 EXISTING ROOFTOP HVAC UNIT TO REMAIN. MECHANICAL CONTRACTOR TO CLEAN AND ADJUST UNIT, CHEMICALLY CLEAN COILS, PERFORM AN OIL SAMPLE TEST ON COMPRESSORS TO VERIFY CONDITION, REPLACE BELTS, VERIFY ALL CONTROLS ARE FUNCTIONAL AND MAKE SURE ALL EQUIPMENT IS IN PROPER OPERATING CONDITION. REPLACE ANY DEFECTIVE PARTS OR EQUIPMENT. GREASE AND/OR REPLACE IF REQUIRED, FAN BEARINGS, CHECK SHAFT FOR SCORING AND CHECK MOTORS FOR PROPER AMPERAGE DRAW, CLEAN OR REPLACE CONDENSATE DRAIN LINE AS REQUIRED, REBALANCE CFM AS SHOWN ON PLANS, RTU SCHEDULE, & KITCHEN/INDUSTRY PRESSURIZATION SCHEDULE. FURNISH UNIT WITH THREE SETS OF STANDARD FILTERS. CONTRACTOR TO REPLACE FILTERS JUST PRIOR TO AIR BALANCE AND ONCE AGAIN AFTER FINAL STORE CLEANING IS COMPLETE. REFER TO ROOFTOP UNIT SCHEDULE SHEET M31 FOR FURTHER INFORMATION AND ADDITIONAL REQUIREMENTS. REPORT IN WRITING ANY PROBLEMS WHICH WOULD REQUIRE REPLACEMENT OF ROOFTOP UNIT INSTEAD OF REUSE TO THE TENANT'S CONSTRUCTION MANAGER. FIELD VERIFY EXACT CONDITION AND LOCATION PRIOR TO BID.
- 7 STRONG SYSTEMS SHALL SUPPLY AND INSTALL CO2 SENSOR ANALOG, AX60. SENSOR SHALL BE MOUNTED AT 12" AFF WITH SPLASH GUARD AND GAGE ELECTRICAL CONTRACTOR TO PROVIDE SINGLE-GANG J-BOX WITH 1/2" CONDUIT EXTENDED TO ABOVE ACCESSIBLE CEILING SPACE. INSTALL PER MANUFACTURER'S RECOMMENDATIONS AND PER LOCAL CODE REQUIREMENTS. FIELD VERIFY EXACT LOCATION AND ALL REQUIREMENTS PRIOR TO BID AND CONSTRUCTION. FOR MORE INFORMATION CONTACT : STRONG SYSTEMS INTERNATIONAL, INC. CHRIS VERCH (770) 729-1199 OR (770) 462-2501.
- 8 STRONG SYSTEMS SHALL SUPPLY AND INSTALL CO2 ANNUNCIATOR MOUNTED AT 60" AFF. ELECTRICAL CONTRACTOR TO PROVIDE SINGLE-GANG J-BOX WITH 1/2" CONDUIT EXTENDED TO ABOVE ACCESSIBLE CEILING SPACE. INSTALL PER MANUFACTURER'S RECOMMENDATIONS AND PER LOCAL CODE. FIELD VERIFY EXACT LOCATION AND ALL REQUIREMENTS PRIOR TO BID AND CONSTRUCTION FOR MORE INFORMATION CONTACT : STRONG SYSTEMS INTERNATIONAL, INC. CHRIS VERCH (770) 729-1199 OR (770) 462-2501.
- 9 STRONG SYSTEMS SHALL SUPPLY AND INSTALL CO2 CENTRAL CONTROL UNIT MOUNTED AT 60" AFF. ELECTRICAL CONTRACTOR TO PROVIDE SINGLE-GANG J-BOX WITH 1/2" CONDUIT EXTENDED TO ABOVE ACCESSIBLE CEILING SPACE. INSTALL PER MANUFACTURER'S RECOMMENDATIONS AND PER LOCAL CODE. FIELD VERIFY EXACT LOCATION AND ALL REQUIREMENTS PRIOR TO BID AND CONSTRUCTION. COORDINATE WITH ELECTRICAL DRAWING E22 FOR EXACT LOCATION. FOR MORE INFORMATION CONTACT : STRONG SYSTEMS INTERNATIONAL, INC. CHRIS VERCH (770) 729-1199 OR (770) 462-2501.
- 10 CONTRACTOR TO INSTALL OVERFLOW SWITCH INSIDE ROOFTOP UNIT DRAIN PAN, ON DOWN-FLOW UNITS AND ALL OTHER COILS THAT DO NOT HAVE A SECONDARY DRAIN AND DO NOT HAVE A MEANS TO INSTALL AN AUXILIARY DRAIN PAN, A WATER-LEVEL MONITORING DEVICE SHALL BE INSTALLED INSIDE THE PRIMARY DRAIN PAN. THIS DEVICE SHALL SHUT OFF THE EQUIPMENT SERVED IN THE EVENT THAT THE PRIMARY DRAIN BECOMES RESTRICTED. EXTERNALLY INSTALLED DEVICES AND DEVICES INSTALLED IN THE DRAIN LINE SHALL NOT BE PERMITTED.
- 11 NEW MANUAL PULL STATION SHALL BE LOCATED 10 FEET MINIMUM TO 20 FEET MAXIMUM FROM HOOD, ONE AT OR NEAR EVERY POINT OF EGRESS FROM THE HOOD COOKING AREA. PULL STATION SHALL BE SECURELY MOUNTED NOT LESS THAN 42" (INCHES) OR MORE THAN 48" (INCHES) FROM THE FLOOR. PROVIDE SIGNAGE FOR PULL STATION.
- 12 PROVIDE A LENNOX FACTORY INSTALLED RETURN AND SUPPLY SIDE SMOKE DETECTOR. REFER TO SCHEDULE ON SHEET M31 AND LENNOX SMOKE DETECTOR AND ANNUNCIATOR WIRING DIAGRAM ON SHEET M42. SEE ADDED BOXED NOTE SHEET M31 HVAC SCHEDULE REGARDING SUPPLY SIDE SMOKE DETECTOR.
- 13 BRANCH TAKE-OFFS ARE NOT TO BE LOCATED CLOSER THAN 3'-0" FROM ANY ELBOW INCLUDING THE SUPPLY AIR DROP FROM CURB.
- 14 R/A DUCT DROP TO BE FULL SIZE OF CURB CONNECTION PROVIDE PLENUM BOX ABOVE CEILING AS SHOWN ON PLAN.
- 15 SEE ELEVATION ON M21 FOR C.J FAN DUCTING REQUIREMENTS.

- 16 MOUNT NEW LENNOX HUMIDITY SENSOR ON WALL ABOVE SPACE TEMP SENSOR AND ROUTE WIRING TO UNIT ON ROOF.
- 17 MOUNT NEW REMOTE TEMPERATURE SENSOR ON WALL AT 5'-0" AFF AND ROUTE WIRING BACK TO SUNCOAST TEMP CONTROL PANEL. FOR SENSOR SERVING KITCHEN ACH1, 5'-8" AFF. COORDINATE EXACT LOCATION WITH KITCHEN EQUIPMENT PRIOR TO BID AND CONSTRUCTION.
- 18 PROVIDE NEW FAN WITH NEW CURB AT LOCATION SHOWN ON PLAN. LOCATE A MINIMUM OF 10 FT FROM PARAPET WALLS IF PARAPET IS LOWER THAN 42" OR FROM ANY NEW OR EXISTING OUTSIDE AIR INTAKE. COORDINATE EXACT LOCATION IN FIELD WITH EXISTING EQUIPMENT AND PIPING. SEE DETAIL ON M41 FOR ORIENTATION OF HINGE SIDE OF FAN ON CURB.
- 19 REPLACE EXISTING AIR CURTAIN WITH NEW, ADH MOUNTED 7'-0" AFF TO BOTTOM OF UNIT. REFER TO M31 FOR MORE INFORMATION. FACTORY PROVIDED AND MOUNTED THERMOSTAT ON RIGHT SIDE OF AIR CURTAIN.
- 20 14X14 VERTICAL DROP. PROVIDE TURNING VANES IN ELBOW. ELBOW TO BE PARTIALLY LOCATED WITHIN STRUCTURE. BOTTOM OF ELBOW TO BE AT SAME ELEVATION AS BOTTOM OF 14X14 SUPPLY MAIN. 14X14 SUPPLY MAIN TO BE LOCATED ENTIRELY BELOW JOISTS. HOLD 14X14 SUPPLY MAIN AS HIGH AS POSSIBLE DUE TO LIMITED CLEARANCE.
- 21 REPLACE EXISTING AIR DEVICE WITH NEW. CONNECT TO EXISTING DUCT SYSTEM. CONTRACTOR SHALL INSTALL NEW DUCT AS REQUIRED. ALL NEW ADDED DUCTWORK SHALL BE RIGID. USE OF FLEX DUCT IS LIMITED TO A MAXIMUM OF 4'-0" AROUND OBSTRUCTIONS, NO EXCEPTIONS (TYP. ALL). INSTALL HARD 90'S DOWN TO SUPPLY AIR & RETURN AIR GRILLES. SEE TAKE-OFF DETAIL ON SHEETS M41 & SPECIFICATIONS ON M51. RE-BALANCE TO AIR QUANTITY AS SHOWN ON PLAN. PROVIDE WITH ACCESSIBLE MANUAL VOLUME DAMPER, WHERE DUCTWORK IS BEING RE-USED. PROVIDE A 4 INCH COLLAR ON EACH DIFFUSER, STRAP & TAPE THE DIFFUSER TO ANY EXISTING DUCTWORK. SEE 'DIFFUSER & GRILLE DETAIL FOR NEW CURB' ON SHEET M41. INSULATE AND RECONNECT AS REQUIRED (TYP) ALL. CONTRACTOR SHALL VERIFY AND COORDINATE ALL DEVICE LOCATIONS WITH LIGHTING AND CEILING LAYOUT AND ALL WALL ELEMENTS AS REQUIRED PRIOR TO BID.
- 22 RELOCATED ROOFTOP HVAC UNIT. MECHANICAL CONTRACTOR TO CLEAN AND ADJUST UNIT, CHEMICALLY CLEAN COILS, PERFORM AN OIL SAMPLE TEST ON COMPRESSORS TO VERIFY CONDITION, REPLACE BELTS, VERIFY ALL CONTROLS ARE FUNCTIONAL AND MAKE SURE ALL EQUIPMENT IS IN PROPER OPERATING CONDITION. REPLACE ANY DEFECTIVE PARTS OR EQUIPMENT. GREASE AND/OR REPLACE IF REQUIRED, FAN BEARINGS, CHECK SHAFT FOR SCORING AND CHECK MOTORS FOR PROPER AMPERAGE DRAW, CLEAN OR REPLACE CONDENSATE DRAIN LINE AS REQUIRED, REBALANCE CFM AS SHOWN ON PLANS, RTU SCHEDULE, & KITCHEN/INDUSTRY PRESSURIZATION SCHEDULE. FURNISH UNIT WITH THREE SETS OF STANDARD FILTERS. CONTRACTOR TO REPLACE FILTERS JUST PRIOR TO AIR BALANCE AND ONCE AGAIN AFTER FINAL STORE CLEANING IS COMPLETE. REFER TO ROOFTOP UNIT SCHEDULE SHEET M31 FOR FURTHER INFORMATION AND ADDITIONAL REQUIREMENTS. REPORT IN WRITING ANY PROBLEMS WHICH WOULD REQUIRE REPLACEMENT OF ROOFTOP UNIT INSTEAD OF REUSE TO THE TENANT'S CONSTRUCTION MANAGER. FIELD VERIFY EXACT CONDITION AND LOCATION PRIOR TO BID.
- 23 EXISTING AIR CURTAIN TO BE RELOCATED AS SHOWN ON PLAN. FIELD VERIFY EXACT REQUIREMENTS PRIOR TO BID.

HVAC GENERAL NOTES

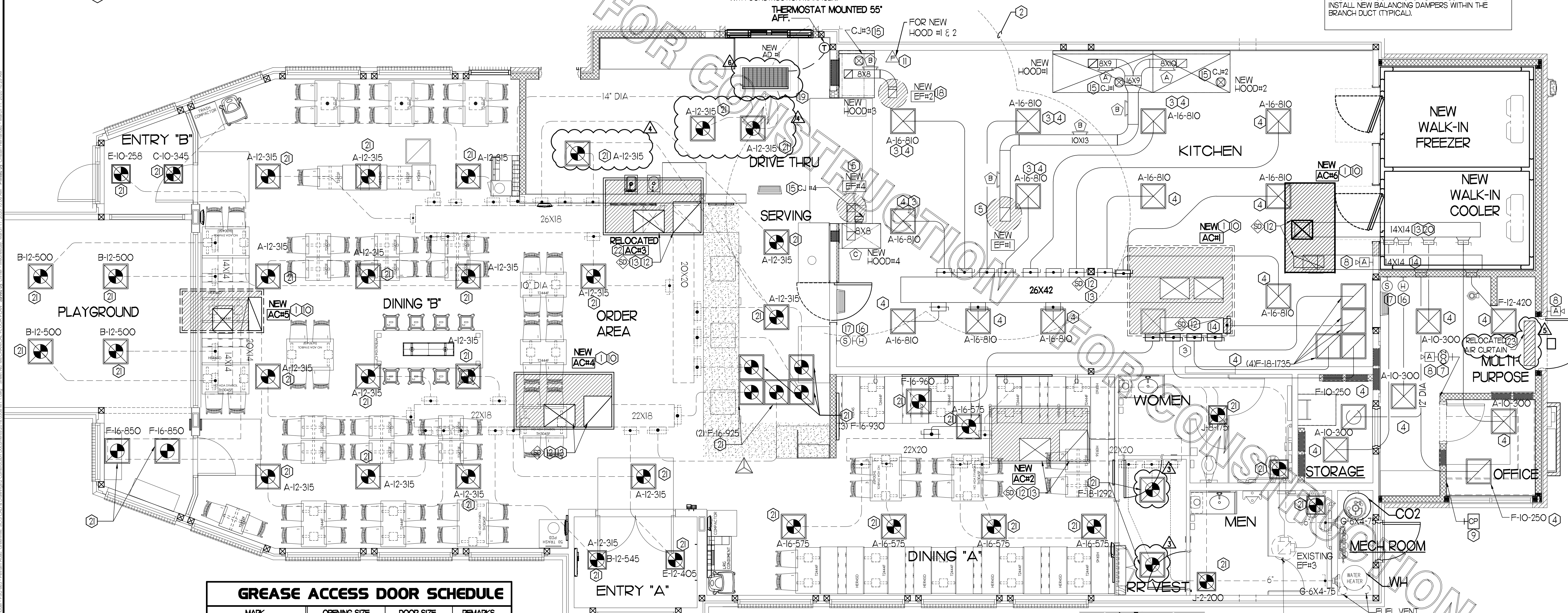
- 1. DUCT SIZES SERVING DIFFUSERS AND GRILLES ARE SAME SIZE AS DIFFUSER OR GRILLE NECK UNLESS NOTED OTHERWISE.
- 2. MECHANICAL CONTRACTOR SHALL BALANCE HVAC SYSTEM AS SHOWN ON THE PLAN & RTU SCHEDULE ON SHEET M-31. IF AIR FLOWS DIFFER BY MORE THAN 5%, CONTACT CFA CONSTRUCTION MANAGER.
- 3. NO PIPING OR DUCTWORK ALLOWED ABOVE ANY ELECTRICAL/CONTROL PANELS.
- 4. COORDINATE NEW WORK WITH EXISTING CONDUITS, STRUCTURE, & PIPING. FIELD VERIFY EXISTING CONDITIONS PRIOR TO COMMENCING WORK. CONTRACTOR TO NOTIFY DESIGN TEAM WITH-OUT DELAY IF ACTUAL LOCATION OF EXISTING MECHANICAL EQUIPMENT DOES NOT MATCH FLOOR PLAN.
- 5. CONTRACTOR SHALL CLEAN & REFURBISH ALL EXISTING DUCTWORK. PATCH & REPAIR OPENING AIR TIGHT OF EXISTING DUCTWORK AS REQUIRED (TYPICAL ALL). FIELD VERIFY AND COORDINATE ALL EXISTING HVAC SIZES, LOCATIONS, AND CONDITION PRIOR TO BID.
- 6. REUSE AND REWORK EXISTING HVAC DUCTWORK. PROVIDE NEW SECTION FOR RECONNECTION AS REQUIRED. FIELD VERIFY ALL REQUIREMENTS PRIOR TO BID.
- 7. CONTRACTOR SHALL BALANCE, INSPECT, REPAIR, OR REPLACE AS NECESSARY IF REQUIRED FOR EXISTING CEILING MOUNTED AIR DEVICES TO REMAIN. FIELD VERIFY AND COORDINATE EXACT SIZE, AIR QUANTITY, LOCATION, AND CONDITION PRIOR TO BID. AIR FLOW SHALL REMAIN AS IS UNLESS NOTED ON PLAN, OR DIRECTED BY CONSTRUCTION MANAGER. ANY DEFICIENCIES AND OR DISCREPANCIES SHALL BE REPORTED TO ARCHITECT/ENGINEER IMMEDIATELY. COORDINATE AIR BALANCE RESULTS WITH CONSTRUCTION MANAGER.

LEGEND

SEC.	SUNCOAST ENVIRONMENTAL CONTROLS CFA-900 ENERGY MGT PANEL.
AC	SUNCOAST FACTORY INSTALLED AND WIRED A/C RELAY. ENERGIZED BY PUTTING STORE SWITCH IN 'STORE OCCUPIED' POSITION.
---	18 GA. WIRING BY CONTRACTOR
---	RTU FACTORY WIRING
---	SEC. FACTORY WIRING

NOTE:
ALL NEW HOODS SHALL BE RATED WITH ONE INCH THICK LAYER OF FACTORY INSTALLED INSULATION TO MEET ZERO INCH CLEARANCE TO COMBUSTIBLE MATERIALS. HOOD SHALL BE CERTIFIED BY ETL SPECIFICATIONS, AND SHALL CONFORM TO UL STANDARD 710, BUILT PER NFPA 96 SECTION 4.2.2. AND NSF LISTED.

NOTE: IF BALANCING DAMPERS ARE NOT EXISTING IN THE BRANCH DUCT OR AT THE TAKE-OFF, MECHANICAL CONTRACTOR SHALL SUPPLY AND INSTALL NEW BALANCING DAMPERS WITHIN THE BRANCH DUCT (TYPICAL).

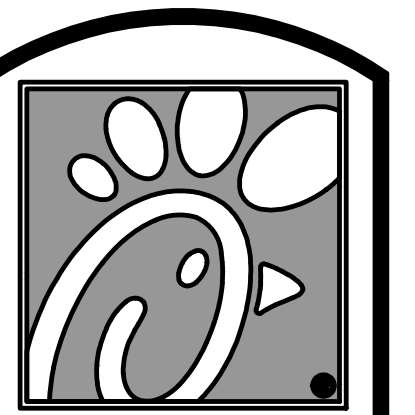


GREASE ACCESS DOOR SCHEDULE

MARK	OPENING SIZE	DOOR SIZE	REMARKS
A	104 X 12W	124 X 14W	I
B	64 X 10W	84 X 12W	I

D ACCESS DOOR SHALL BE UL 1978 LISTED, REQUIRE NO TOOLS FOR REMOVAL AND BE EQUAL TO DUCTMATE ULTIMATE DOOR II WELD ON TYPE.

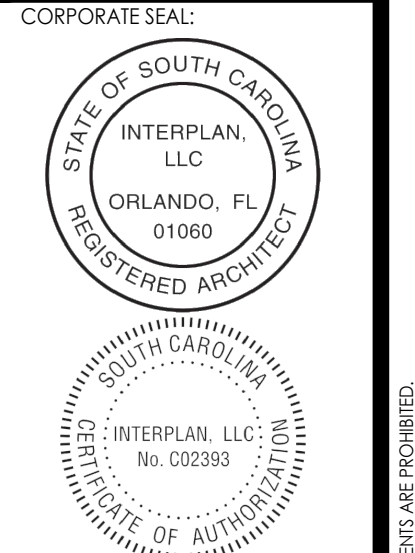
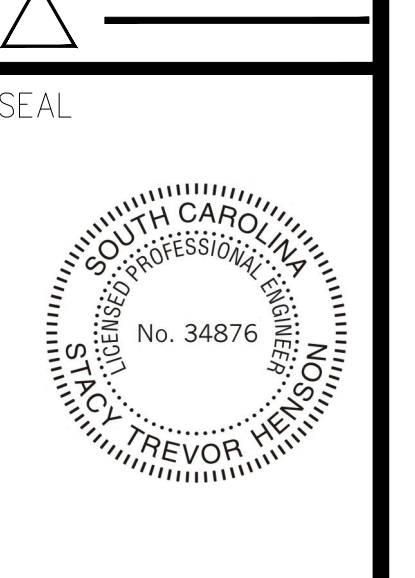
MECHANICAL FLOOR PLAN
1/4"=1'-0"
TRUE NORTH PROJECT NORTH



5200 Buffington Rd.
Atlanta Georgia,
30349-2998

Revisions:

Mark	Date	By
4	01/16/20	CH OWNER REVISIONS
5	01/27/20	CH PRE-BID NOTES
6	03/03/20	CH ARCH/ CIVIL COORDINATION



INTERPLAN
ARCHITECTURE
ENGINEERING
INTERIOR DESIGN
PROJECT MANAGEMENT

404 COURTLAND STREET
SUITE 100
ORLANDO, FLORIDA 32804
PH 407.648.9208
FX 407.629.9124

STORE
PELHAM ROAD FSU
S04-162

3890 PELHAM ROAD
GREENVILLE, SC
29615

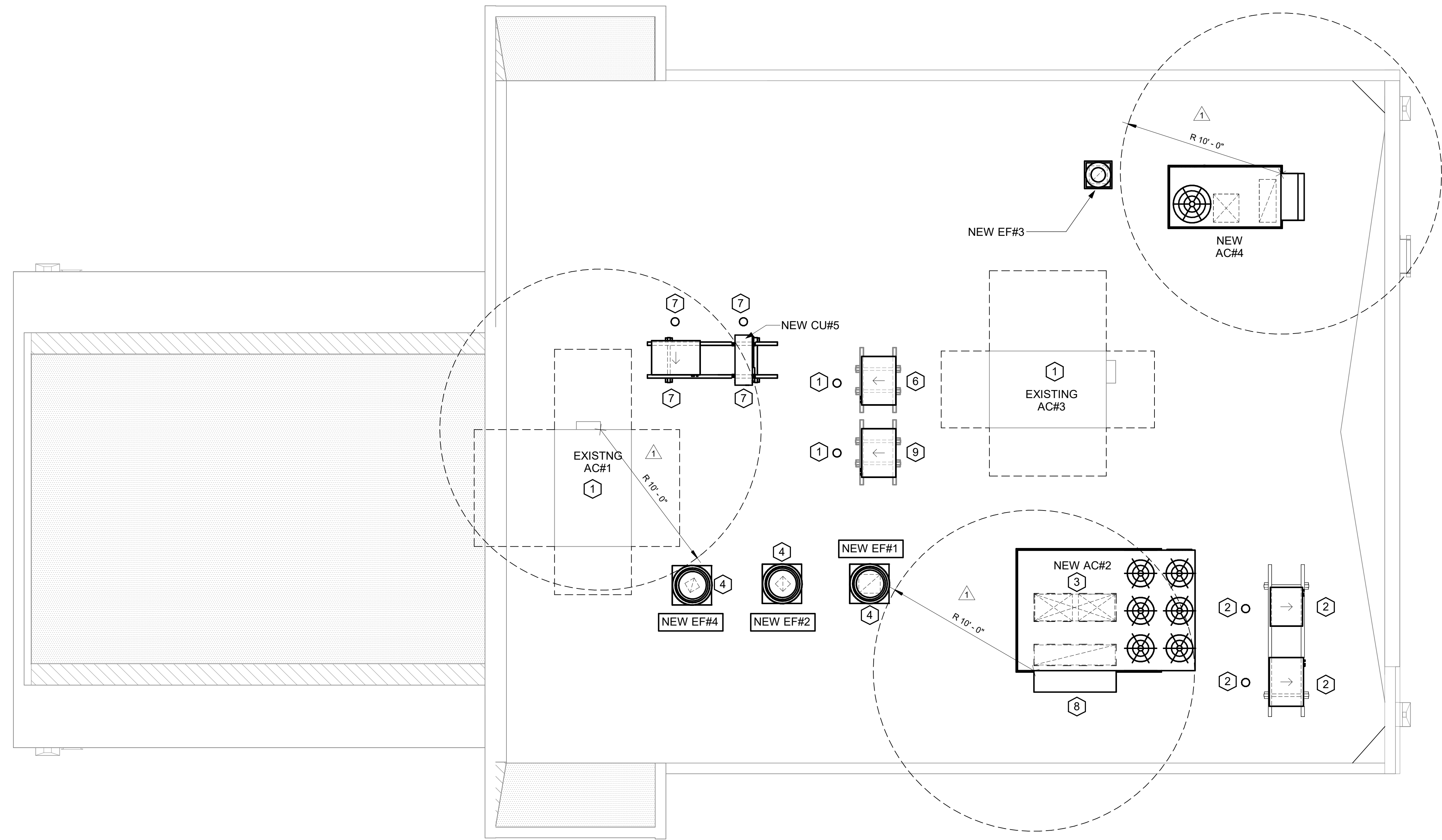
SHEET TITLE
MECHANICAL
FLOOR PLAN

VERSION: 19.053
ISSUE DATE: 10-2019

Job No. : 18.0308
Store : 0663
Date : 10/2019
Drawn By : WA
Checked By : JL



12/12/2024 10:40:55 AM Autodesk Docs://GA_00636_Perimeter Pointe MEC_Perimeter Pointe_CPH_Reinvestment.rvt
30-00636-M-250-MECHANICAL ROOF PLAN



1 MECHANICAL ROOF PLAN
1/4" = 1'-0"

MECHANICAL GENERAL NOTES:

- ALL WORK PERFORMED SHALL BE IN ACCORDANCE WITH ALL LOCAL CODES AND ACCEPTABLE TO THE AUTHORITY HAVING JURISDICTION.
- ALL DIMENSIONS, CLEARANCES AND TOLERANCES SHALL BE VERIFIED PRIOR TO INSTALLATION.
- ALL MATERIALS, FIXTURES AND EQUIPMENT USED SHALL BE IN ACCORDANCE WITH CHICK-FIL-A SPECIFICATIONS. SPECIFICATIONS ARE CONTAINED WITHIN THESE DRAWINGS ANY VARIANCE FROM THE CHICK-FIL-A SPECIFICATIONS SHALL BE REVIEWED AND APPROVED BY THE ENGINEER-OF-RECORD.
- ALL EQUIPMENT SHALL BE INSTALLED IN ACCORDANCE WITH ITS LISTING AND/OR THE MANUFACTURER'S INSTALLATION INSTRUCTIONS.
- SEE COORDINATION SCHEDULE FOR ADDITIONAL SCOPE OF WORK.
- AT EACH PIECE OF ROOF EQUIPMENT, PROVIDE UNIT DESIGNATION ON A PLASTIC ENGRAVED LABEL WITH 1" HIGH WHITE LETTERS ON A BLACK BACKGROUND. THE LABEL IS TO HAVE A SELF ADHESIVE BACKING.

KEY NOTES:

- EXISTING EQUIPMENT TO REMAIN.
- CONTRACTOR TO INSTALL NEW FREEZER/COOLER CONDENSING UNITS, NEW GOOSENECK PIPE PORTAL, AND NEW RACK STAND. ROUTE NEW INSULATED REFRIGERANT PIPING DOWN THROUGH NEW REFRIGERANT GOOSENECK TO NEW FREEZER/COOLER EVAPORATOR BELOW. RECHARGE REFRIGERANT SYSTEM. REFER TO KEY NOTE #2 ON SHEET M-101.
- CONTRACTOR SHALL INSTALL NEW LENNOX AC#2 AND AC#4 RTU AND ROOF FAN SCHEDULE ON MECHANICAL SHEET M-402. COORDINATE ROOF PENETRATION OPENINGS. REFER TO RTU SCHEDULE FOR FURTHER INFORMATION.
- CONTRACTOR SHALL INSTALL NEW GREASE EXHAUST FAN PER EXHAUST FAN SCHEDULE ON MECHANICAL SHEET M-402. ENSURE THAT NEW EXHAUST FAN IS INSTALLED A MINIMUM 10'-0" FROM ALL AIR INTAKE OPENINGS AND PARAPET. PROVIDE NEW CURB.
- NOTE NOT USED.
- CONTRACTOR TO INSTALL NEW CONDENSING UNIT, EXISTING REFRIGERATION RACK STAND, AND REFRIGERANT PORTAL FOR KITCHEN ICE MACHINE. ROUTE AND CONNECT NEW REFRIGERANT PIPING THROUGH NEW REFRIGERANT GOOSENECK TO KITCHEN ICE MAKER BELOW. CONTRACTOR TO CHARGE REFRIGERANT SYSTEM. REFER TO KEYNOTE #2 ON SHEET M-101.
- CONTRACTOR TO INSTALL NEW CONDENSING UNITS, NEW REFRIGERATION RACK STAND, AND NEW REFRIGERANT PORTAL FOR NEW DRIVE-THRU SPLIT SYSTEM AND DRIVE-THRU ICE MACHINE. ROUTE NEW REFRIGERANT PIPING DOWN TO NEW THROUGH NEW REFRIGERANT GOOSENECKS. COORDINATE WITH STRUCTURAL FOR EXACT LOCATION AND INSTALLATION REQUIREMENTS.
- OUTSIDE AIR INTAKE HOOD. ENSURE THAT HOOD INTAKE IS A MINIMUM OF 10'-0" FROM ANY EXHAUST OR PLUMBING VENT DISCHARGE.
- CONTRACTOR TO INSTALL AND ROUTE NEW REFRIGERANT PIPING FROM EXISTING REMOTE CONDENSER THROUGH EXISTING REFRIGERANT GOOSENECK TO DRIVE-THRU ICE MAKER BELOW. CONTRACTOR TO RECHARGE REFRIGERANT SYSTEM. REFER TO KEYNOTE #2 ON SHEET M-101.



Chick-fil-A
5200 Buffington Road
Atlanta, Georgia
30349-2998



www.cphcorp.
A Full Service A & E Firm
Plans Prepared By
CPH Consulting, LLC.
State of Georgia License:
Engineer No. PEF006331
Surveyor No. LSF000870
Architect No. N/A
Landscape No. N/A



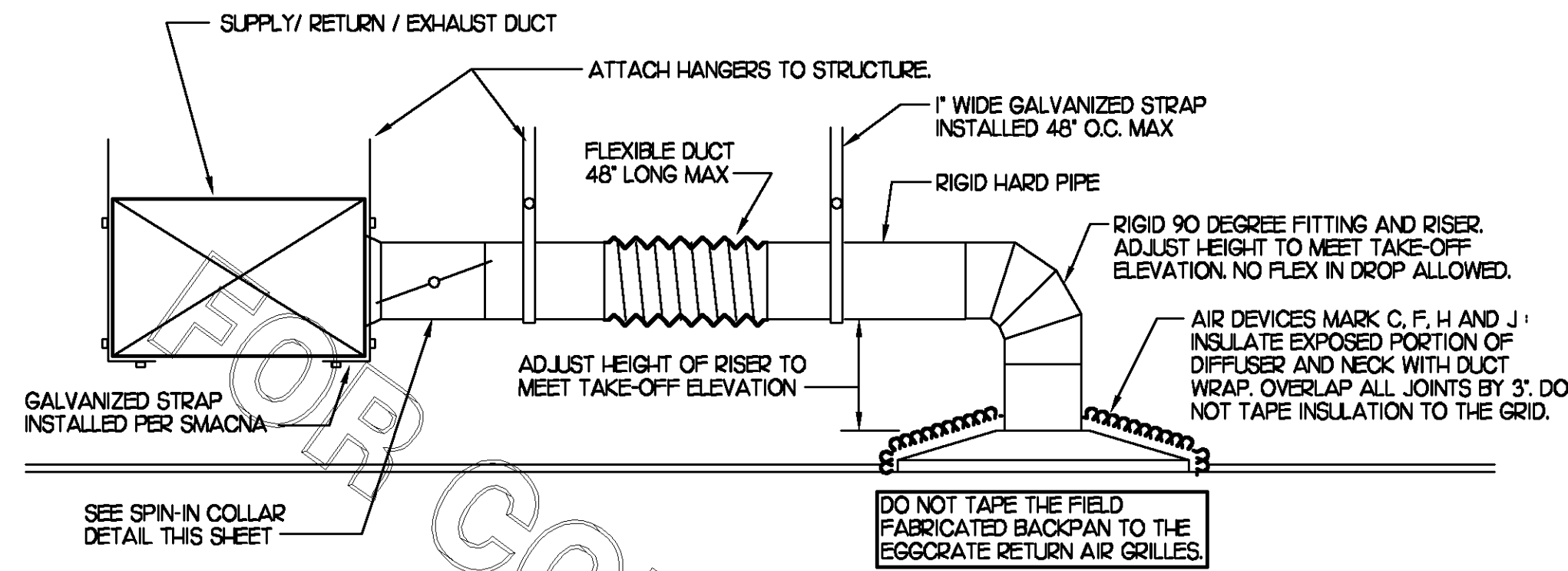
CHICK-FIL-A
PERIMETER POINTE
1145 MOUNT VERNON HWY
SANDY SPRINGS, GA 30338

SRI#00636
BUILDING TYPE / SIZE: SRI 575
RELEASE: 23.11
PRINTED FOR
CONSTRUCTION

REVISION SCHEDULE		
NO.	DATE	DESCRIPTION
1	07/12/2024	Permit Set
1	11/01/2024	Permit Rev 1
	11/02/2024	Bid
	12/20/2024	Const

For Construction -

CONSULTANT PROJECT # C28159
DATE 07/12/2024
DRAWN BY JRH
Information contained on this drawing and all digital files produced for above named project may not be reproduced in any manner without express written or verbal consent from authorized project representatives.
MECHANICAL ROOF PLAN
SHEET NUMBER
M-250



1 SAG/RAG/GRILLE TAKE-OFF

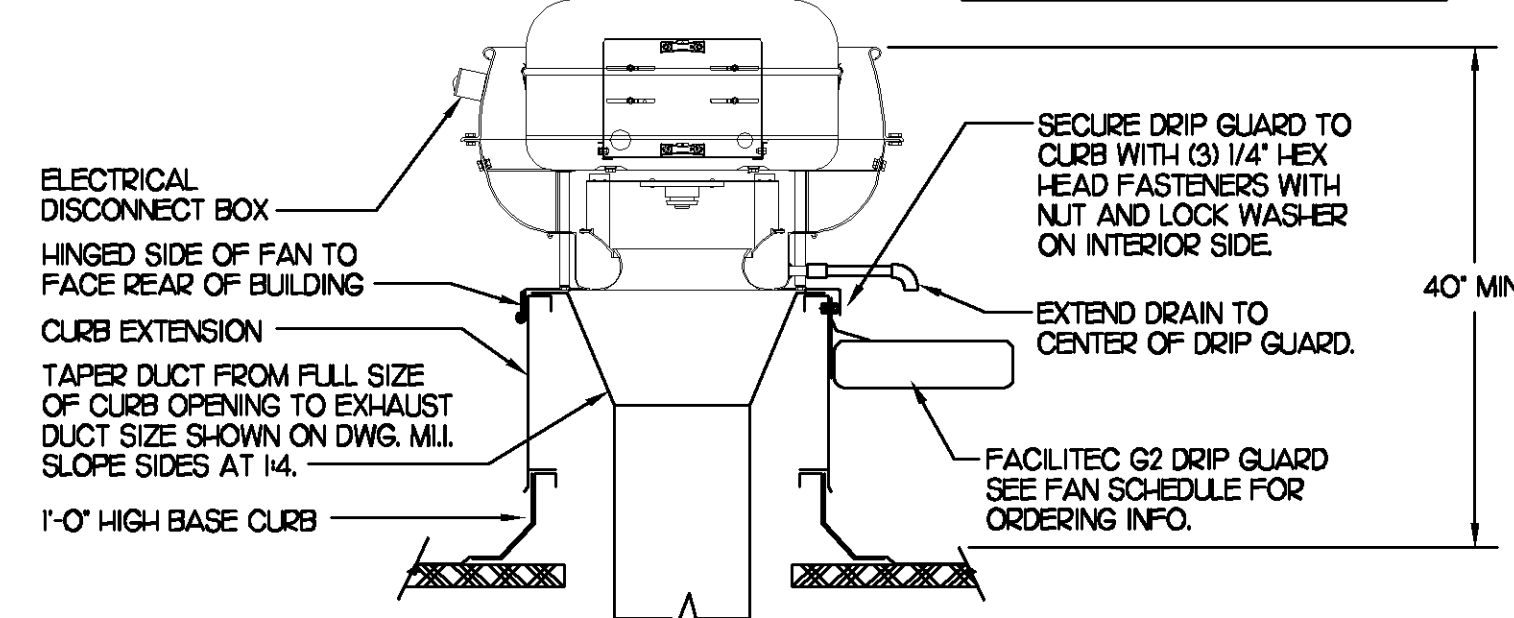
NO SCALE

HIGH WIND FASTENER REQUIREMENTS

SECURE FAN HINGED BASE TO CURB EXTENSION AND CURB EXTENSION TO BASE CURB WITH #12-24X3/4" HEX WASHER HEAD SHEET METAL SCREW EQUAL TO TEXTRON ELCO E-6150 WITH RUBBER WASHER. ONE FASTENER EACH SIDE OF CURB.

SECURE BASE CURB TO ROOF OPENING BLOCKING WITH #12-24X1" HEX WASHER HEAD SHEET METAL SCREW EQUAL TO TEXTRON ELCO SDS EDT265. SCREW SHALL FULLY PENETRATE CURB FRAME AND BLOCKING. ONE FASTENER ON EACH SIDE OF CURB.

HINGED SIDE OF FAN MUST FACE REAR OF BUILDING, NO EXCEPTIONS.

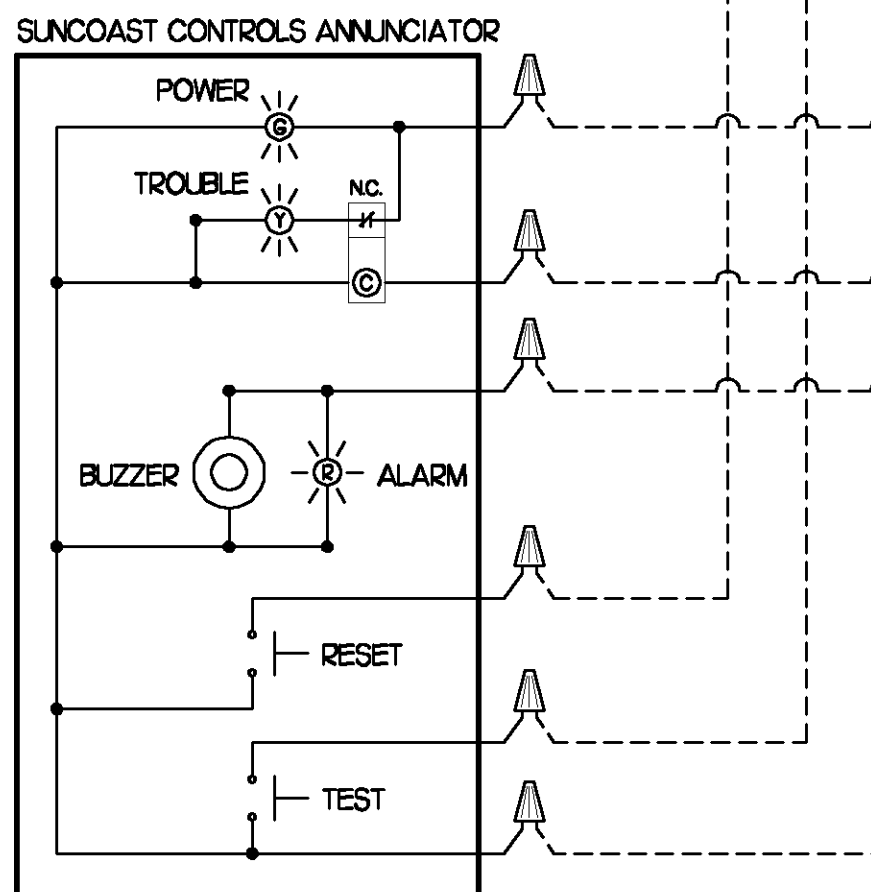


3 KITCHEN HOOD EXHAUST FAN

NO SCALE

SUPPLY SIDE DETECTORS: IF SUPPLY SIDE SMOKE DETECTORS ARE SHOWN ON DWG MILL, AND CALLED FOR ON RTU SCHEDULE, THE CONTRACTOR IS TO RELOCATE FACTORY INSTALLED SUPPLY SMOKE DETECTOR FROM BLOWER SECTION TO DUCTWORK. SEE NOTES ON DWG MILL.

LEGEND
 - - - 18 AWG WIRING BY MECH CONTRACTOR
 - - - FACTORY ANNUNCIATOR DETECTOR WIRING
 - - - FACTORY LENNOX WIRING



5 SMOKE DETECTOR AND ANNUNCIATOR WIRING DIAGRAM

NO SCALE

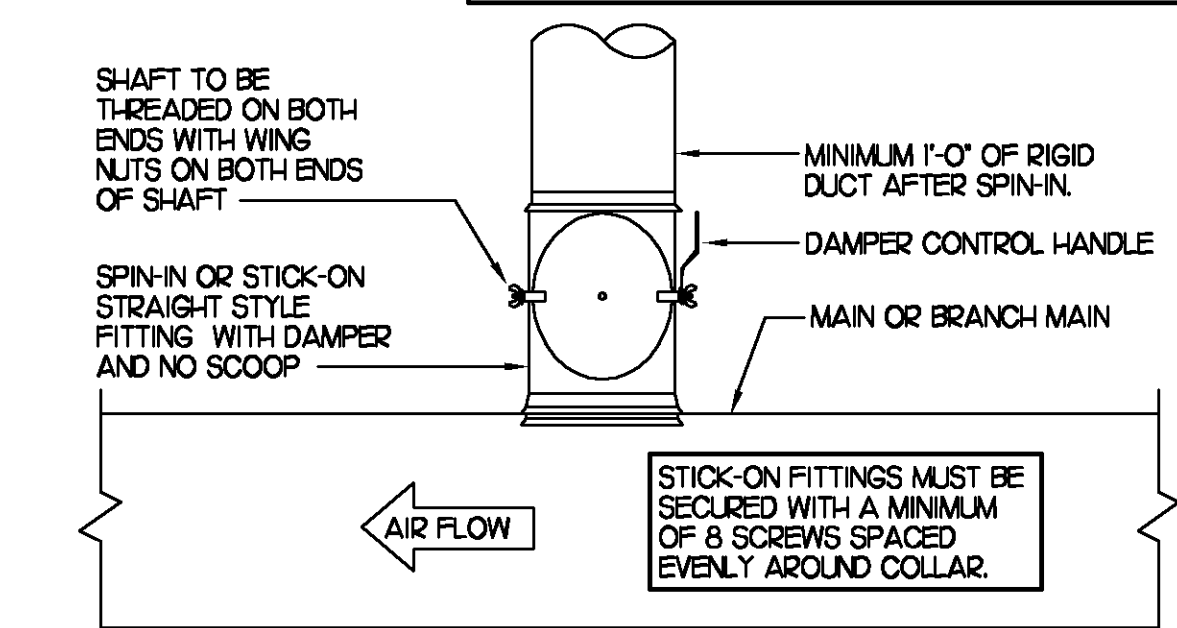
FIELD INSTALLED WIRING: WITHIN THE ROOFTOP UNIT, WIRING SHALL BE ROUTED BY WAY OF FACTORY WIREWAYS ONLY. WIRING ROUTED OVER THE BLOWER HOUSING OR BY WAY OF OTHER ROUTES DETRIMENTAL TO THE WIRING LIFE WILL NOT BE ACCEPTED.

LENNOX FACTORY WIRING

LENNOX FACTORY INSTALLED DUCT DETECTOR (MIN DH-400)

1	POWER (24VAC)	
2	POWER (COM)	
3	RESET	
4	TEST	
5	ALARM SIGNAL	
6	AUXILIARY POWER (-)	
7	AUXILIARY POWER (+)	
8	ALARM INITIATION (COM)	ALARM NO.
9	ALARM INITIATION (N.O.)	
10	TROUBLE CONTACT (COM)	TROUBLE NO.
11	TROUBLE CONTACT (N.C.)	
12	120/240V N/ETRAL	
13	120VAC HOT	
14	240VAC HOT	
15	ALUX RELAY (N.C.)	N.C. ALUX ALARM CONTACT 1
16	ALUX RELAY (COM) COM	
17	ALUX RELAY (N.O.)	
18	ALUX RELAY (N.C.)	N.C. ALUX ALARM CONTACT 2
19	ALUX RELAY (COM) COM	
20	ALUX RELAY (N.O.)	

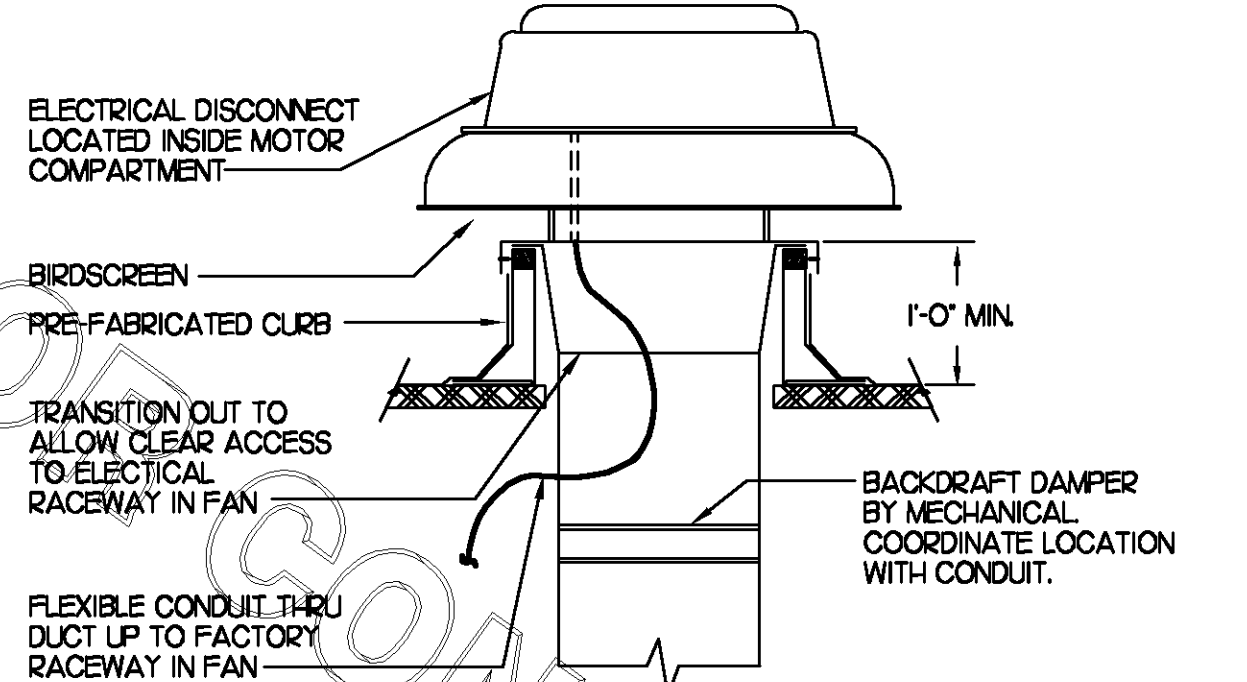
DO NOT APPLY START COLLAR OVER DUCT WRAP.
 DAMPER CONTROL HANDLE MUST BE LEFT EXPOSED. ATTACH A YELLOW FLUORESCENT CONSTRUCTION RIBBON TO THE HANDLE. RIBBON MUST HANG 12" BELOW DUCT AND BE EASILY IDENTIFIABLE FOR TEST AND BALANCE CONTRACTOR.



2 START COLLAR

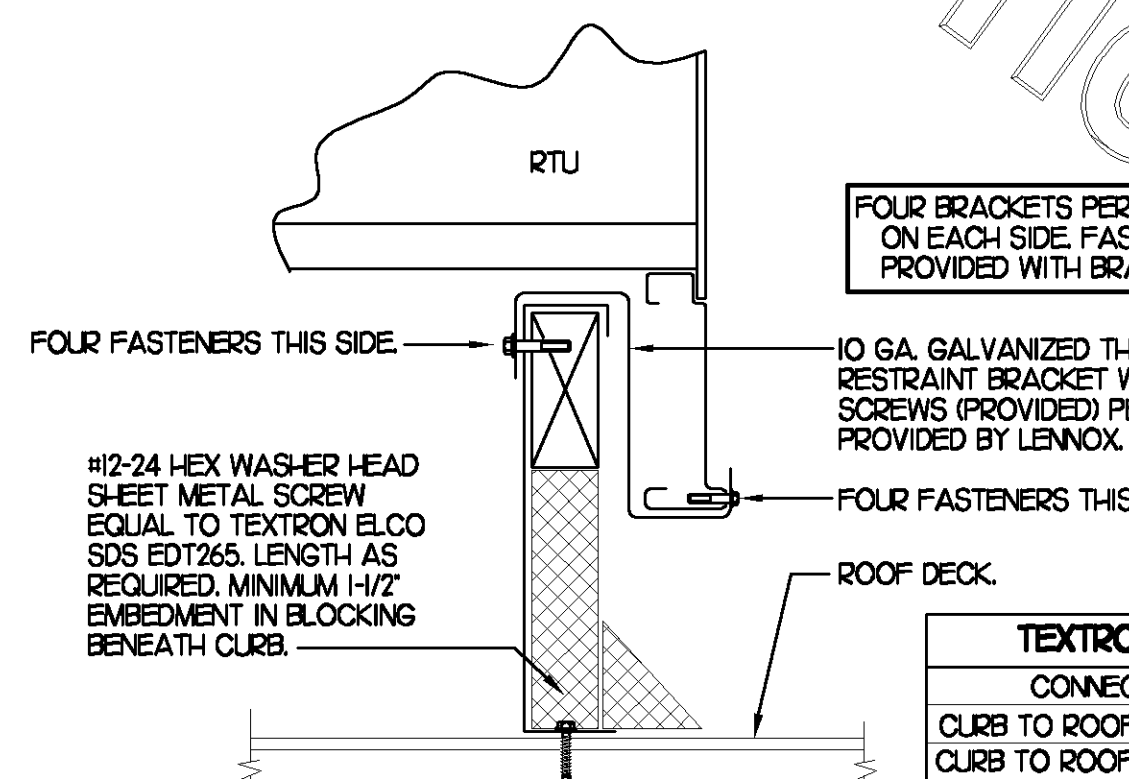
NO SCALE

HIGH WIND FASTENER REQUIREMENTS
 SECURE FAN TO CURB AND CURB TO ROOF OPENING BLOCKING WITH SHEET METAL SCREWS (#10 X 1 1/2"). TWO FASTENERS EACH SIDE OF CURB.



4 RESTROOM EXHAUST FAN

NO SCALE



10 RTU CURB BRACKET

NO SCALE

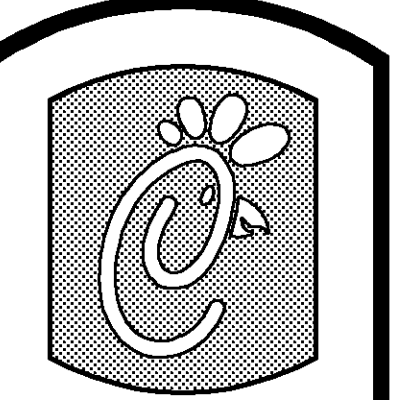
CONNECTION	QTY OF FASTENERS
CURB TO ROOF LONG SIDE	6
CURB TO ROOF SHORT SIDE	4

MARK	GAS FIRED ROOFTOP UNIT SCHEDULE										REMARKS
	COOLING CAPACITY (MBH)		HEATING CAPACITY (MBH)		FAN SECTION (CFM)			MODEL	MANUFACTURER		
	TOTAL	SENS	INPUT	OUTPUT	SUPPLY	O.A.	HP	ESP	R-410A		
ACH	1881	135.4	480.0	384.0	5150	1700	5	.70	LGC180H4	LENNOX	13.5,6.8,9,10,11,12,14,15
AC#2	105.9	76.2	240.0	192.0	2830	780	2	.65	LGA102H4	LENNOX	23.5,7.8,9,10,11,12,13,14
AC#3	128.0	90.9	240.0	192.0	4000	1030	3	.65	LGA120H4	LENNOX	13.5,7.8,9,10,11,12,13,14,15
AC#4	93.8	67.5	240.0	192.0	2765	630	2	.65	LGA090H4	LENNOX	23.5,8.9,10,11,12,13,14
AC#5	63.9	47.3	125.0	100.0	1800	300	1.5	.65	LGA060H4	LENNOX	3.4,5,8.9,10,11,12,13,14
NOTES	* COOLING CAPACITIES ARE GROSS, BASED ON INDOOR: 80°FDB/67°FWB, OUTDOOR: 95°FDB, AND 400 CFM PER TON. * CHICK-FIL-A MAINTAINS A NATIONAL ACCOUNT FOR EQUIPMENT WITH LENNOX CORPORATION. CONTACT LENNOX NATIONAL ACCOUNTS AT 972-497-6260 (OR BY FAX AT 972-497-5112) FOR PRICING, ORDERING AND AVAILABILITY.										
REMARKS	1) PROVIDE DIFFERENTIAL ENTHALPY ECONOMIZER WITH POWER EXHAUST. 2) PROVIDE DIFFERENTIAL ENTHALPY ECONOMIZER WITH BAROMETRIC EXHAUST. 3) PROVIDE 12" HIGH ROOF CURB WITH LENNOX/THYRUBR RESTRAINT CLIP. 4) PROVIDE 0" HOOR MOTORIZED OUTSIDE AIR DAMPER ASSEMBLY. 5) SEE DETAIL 21M1 FOR SETTING OF EXHAUST PARAMETERS BY I/C. 6) PROVIDE FACTORY INSTALLED AND UNIT POWERED 115V GFI SERVICE OUTLET. 7) PROVIDE FACTORY INSTALLED 115V GFI SERVICE OUTLET. 8) PROVIDE FACTORY INSTALLED RETURN SIDE SMOKE DETECTOR. 9) PROVIDE FACTORY INSTALLED NON-FUSED DISCONNECT. 10) PROVIDE 2" MERV 7 THROW AWAY FILTERS. 11) PROVIDE 2" PANEL FOR FILTER ACCESS, FAN MOTOR ACCESS, COMPRESSOR ACCESS AND CONTROL COMPARTMENT ACCESS. 12) ADJUST GAS MANIFOLD PRESSURE AT LOCATIONS WHERE ELEVATION EXCEEDS 2000' ABOVE SEA LEVEL AS RECOMMENDED BY MANUFACTURER. 13) NOT USED. 14) NOT USED. 15) PROVIDE HUMIDITROL OPTION WITH FACTORY WALL MOUNTED HUMIDITY SENSOR (STATES OF CA AND AZ EXCLUDED).										

MARK	EXHAUST FAN SCHEDULE										REMARKS
	CFM	ESP	RPM	TIP SPEED (FPM)	HP	AREA SERVED	MODEL	MANUFACTURER			
EF#1	1700	3/4	1163	4641	1/2	HOOD#1	150V5B	LOREN COOK	12,3,4,5,6,12		
EF#2	1400	3/4	1143	4937	1/2	HOOD#2 & HOOD#3	165V-6B	LOREN COOK	12,3,4,5,6,12		
EF#3	400	3/8	1429	3413	1/8	RESTROOMS	ACED-90C5DH	LOREN COOK	2,7,8,9,10,11,12		
NOTES	* GREASE EXHAUST FAN RPM BASED ON 80 DEGREE F AIR AT 1000 FEET ABOVE SEA LEVEL. * GREASE EXHAUST FANS TO BE UL 762 LISTED.										
REMARKS	1) PROVIDE FACTORY 1" O" BASE CURB AND EXTENSION. 2) PROVIDE FACTORY INSTALLED, PRE-WIRED, NEMA 3 NON-FUSED DISCONNECT. 3) PROVIDE FACTORY INSTALLED HINGED BASE KIT. 4) PROVIDE FACTORY INSTALLED WIND BAND CLEAN OUT PORT. 5) PROVIDE FACTORY INSTALLED HELICAL SPRING AUTOMATIC BELT TENSIONER. 6) PROVIDE AND INSTALL FACILITEC G2 DRIP GUARD. THE MECHANICAL CONTRACTOR IS TO CONTACT FACILITEC AT 800-284-8273 FOR PURCHASING AND SHIPPING ARRANGEMENTS. 7) PROVIDE BIRDSCREEN. 8) BACKDRAFT DAMPER IN DUCT BY MECHANICAL CONTRACTOR AS SHOWN ON 4M-31. 9) STARTER BY ELECTRICAL CONTRACTOR. INTERLOCK WITH LIGHTS BY ELECTRICAL CONTRACTOR. 10) PROVIDE 12" HIGH CURB. 11) PROVIDE FACTORY INSTALLED AND WIRED SPEED CONTROLLER. 12) CHICK-FIL-A HAS A NATIONAL ACCOUNT WITH TOM BARRROW COMPANY FOR THE FAN/CURB PACKAGE. THE MECHANICAL CONTRACTOR IS REQUIRED TO PURCHASE THE FAN/CURB PACKAGE DIRECTLY FROM TOM BARRROW COMPANY. CONTACT MR. SCOTT GEORGE AT 404-351-0100 FOR PRICING AND AVAILABILITY. FANS AND CURBS NOT PURCHASED THRU TOM BARRROW COMPANY WILL NOT BE ACCEPTED.										

MARK	AIR DEVICE SCHEDULE						REMARKS
	DESCRIPTION	LOCATION	NECK SIZE	FACE SIZE	FRAME TYPE		
A	TITUS MODEL PSS-AA ALUMINUM SUPPLY AIR DIFFUSER WITH AIR PATTERN CONTROLLER.	DINING AREA KITCHEN	SEE PLAN	24X24	LAY-IN	1.8,9	
C	TITUS MODEL MCD STEEL SUPPLY AIR DIFFUSER FIELD ADJUSTABLE AIR PATTERN CONTROLLERS.	ENTRY 'A' ENTRY 'B'	14X14	19X9	SURFACE	1.3,5,7,9	
D	TITUS MODEL 272FS DOUBLE DEFLECTION ALUMINUM SIDEWALL SUPPLY GRILLE FRONT BLADE PARALLEL TO SHORT SIDE.	MECH/ELEC ROOM	8X6	10X8	SURFACE	1,9	
E	TITUS MODEL 272FL DOUBLE DEFLECTION ALUMINUM SIDEWALL SUPPLY GRILLE FRONT BLADE PARALLEL TO LONG SIDE.	PLAYGROUND	18X12	20X14	SURFACE	1,9	
F	DONCO MODEL CFDF EGGRATE RETURN AIR GRILLE WITH REMOVABLE WHITE CORE, FACTORY FLAT BACKPAN AND ROUND NECK.	DINING/OFFICE KITCHEN	SEE PLAN	24X24	LAY-IN	1,7,9	
G	TITUS MODEL 56FL ALUMINUM SIDEWALL RETURN GRILLE, FRONT BLADE PARALLEL TO LONG SIDE.	MECH/ELEC ROOM	8X6	10X8	SURFACE	1,9	
H	TITUS MODEL TMR-AA ALUMINUM CONCENTRIC ROUND CONE SUPPLY DIFFUSER.	OFFICE	10	18	LAY-IN	1.6,7,9	
J	TITUS MODEL MCD STEEL SUPPLY AIR DIFFUSER FIELD ADJUSTABLE AIR PATTERN CONTROLLERS.	RESTROOMS	10X10	15X15	SURFACE	1.2,3,5,7,9	
K	TITUS MODEL PAR STEEL PERFORATED FACE RETURN AIR GRILLE WITH OBD.	RESTROOMS ENTRY 'A' & 'B'	14X14	16X16	SURFACE	1.4,9	
	TITUS MODEL 56FL ZERO DEGREE DEFLECTION ALUMINUM SIDEWALL RETURN GRILLE FRONT BLADE PARALLEL TO LONG SIDE.	PLAYGROUND	16X16	18X18	SURFACE	1,9	
REMARKS	1) STANDARD OFF WHITE FINISH. 2) PROVIDE MODEL AG-85 NECK DAMPER. 3) SEE DRAWING M1 FOR THROW. 4) PROVIDE MODEL AG-75 NECK DAMPER ON GRILLES IN RESTROOMS. 5) FIELD FABRICATE 8" DEEP BACKPAN SEAL JOINTS WITH MASTIC AND INSULATE EXTERNALLY. 6) PROVIDE AG-75 NECK DAMPER, ADJUSTABLE THRU DIFFUSER FACE. 7) FIELD INSULATE BACKPAN AS SHOWN ON DETAIL 11M-31. 8) FACTORY INSULATE R-6 BACKPAN. 9) CHICK-FIL-A HAS A NATIONAL ACCOUNT WITH TOM BARRROW COMPANY FOR THE AIR DEVICES. THE MECHANICAL CONTRACTOR SHALL PURCHASE THE AIR DEVICES DIRECTLY FROM TOM BARRROW COMPANY. CONTACT MR. SCOTT GEORGE AT 404-351-0100 FOR PRICING AND AVAILABILITY. AIR DEVICES NOT PURCHASED THRU TOM BARRROW COMPANY WILL NOT BE ACCEPTED.						

MARK	AIR DOOR SCHEDULE							REMARKS
	CFM	VELOCITY	HEATING CAP	HP	AREA SERVED	MODEL	MANUFACTURER	
AD#1	750	3,050	72 KW	1/5	DRIVE THRU	MP4-30E	POWERED-AIRE	1,2,4
AD#2	3,384	4,000	NA	3/4	REAR DOOR	BCT-142	POWERED-AIRE	3,4
REMARKS	1) FACTORY PROVIDED REMOTE MOUNTED HEAT/ON/AUTO CONTROLS. 2) FACTORY PROVIDED, UNIT MOUNTED SPEED CONTROLLER. 3) FACTORY PROVIDED PLUNGER TYPE MICRO-SWITCH. 4) CHICK-FIL-A HAS A NATIONAL ACCOUNT WITH TOM BARRROW COMPANY FOR THE AIR DOORS. THE MECHANICAL CONTRACTOR SHALL PURCHASE THE AIR DOORS DIRECTLY FROM TOM BARRROW COMPANY. CONTACT MR. SCOTT GEORGE AT 404-351-0100 FOR PRICING AND AVAILABILITY. AIR DOORS NOT PURCHASED THRU TOM BARRROW COMPANY WILL NOT BE ACCEPTED.							

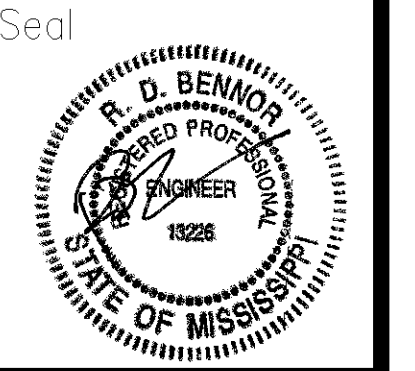


5200 Buffington Rd.
 Atlanta Georgia,
 30349-2998

Revisions:
 Mark Date By
 △

Mark Date By
 △

Mark Date By
 △



BENBOR ENGINEERING, LLC
 5000 Longford Road
 Building 2400
 Nettcross, GA 30071
 (770) 729-1422, bus
 (770) 729-0430, fax
 contact@benborEng.com

STORE
 D'iberville, MS,
 FSU S08C
 Pad 3 on Promenade
 Parkway - Promenade
 Shopping Center

D'iberville, Mississippi

SHEET TITLE
 HVAC DETAILS
 & SCHEDULES

VERSION: 2
 ISSUE DATE: 1-2009
 Job No. : 9012
 Store : 2463
 Date : 2/10/09
 Drawn By : JL/RW
 Checked By : RDB

Sheet
M-3.I

