

**Report By:**

National TAB  
1329 E. KEMPER ROAD  
SUITE 4210  
CINCINNATI, OH 45246



**Report: Deficiency Report**  
**Function: Test, Adjust, & Balance**  
**Date: 12/11/2024**  
**Completed By: National TAB**

# PROJECT

## 12-09-2024 FREDDY'S - HUNTSVILLE, AL

7001 Cabela Drive

Huntsville, AL 35806

**Client**

HLI FOODS

# National TAB

Project: 12-09-2024 FREDDY'S - HUNTSVILLE, AL

## Table Of Contents

Section	Page #
Issue Data	3

## Issue List

- EF-1
- EF-1 & EF-2 Backdraft damper
- EF-2
- Gas Piping
- KEF-1 Grease Pan
- KEF-2 Bolts
- KEF-2 Grease Pan
- RTU-1 Final Filter
- RTU-1 Ventilation Noise



**12-09-2024 FREDDY'S - HUNTSVILLE, AL**

**Project Issue Information**

**Issue Name :** EF-1  
**Description :** EF-1 is not wired to power. Unable to balance unit until this is resolved.  
**Created By :** National TAB                      **Assigned To :** National TAB - Kristopher Passley  
**Status :** Closed  
**Priority :** Urgent                                      **Asset Tag :**  
**Originated Date :** 12/12/2024 - Kristopher Passley - National TAB

Project Issue File Details



12/12/2024

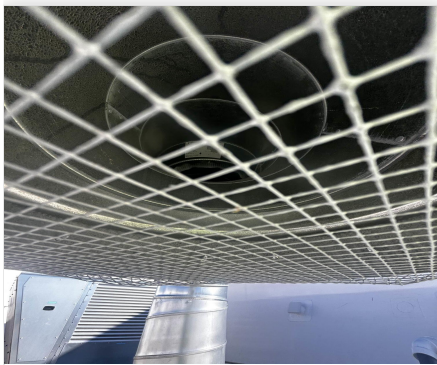


12-09-2024 FREDDY'S - HUNTSVILLE, AL

**Project Issue Information**

**Issue Name :** EF-1 & EF-2 Backdraft damper  
**Description :** Back draft damper is not installed. Recommend mechanical install as per plans. See plans MP0>14. Exhaust fans:> "B"  
**Created By :** National TAB                      **Assigned To :** National TAB - Kristopher Passley  
**Status :** Open  
**Priority :** High                                      **Asset Tag :**  
**Originated Date :** 12/12/2024 - Kristopher Passley - National TAB

Project Issue File Details



12/12/2024

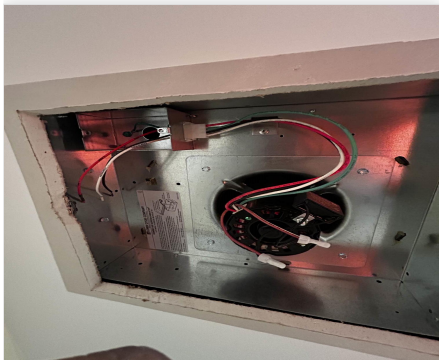


12-09-2024 FREDDY'S - HUNTSVILLE, AL

Project Issue Information

**Issue Name :** EF-2  
**Description :** EF-2 is not wired to power. Unable to balance unit until this is resolved.  
**Created By :** National TAB                      **Assigned To :** National TAB - Kristopher Passley  
**Status :** Closed  
**Priority :** Urgent                                      **Asset Tag :**  
**Originated Date :** 12/12/2024 - Kristopher Passley - National TAB

Project Issue File Details



12/12/2024



**12-09-2024 FREDDY'S - HUNTSVILLE, AL**

**Project Issue Information**

**Issue Name :** Gas Piping  
**Description :** See Plans MP0> 7. PIPING> H. NATURAL GAS> 2) GAS PIPING PAINTING  
All black steel gas piping located exterior to the building shall be primed and painted to either match adjacent exterior where located on or near exterior wall and painted safety yellow where located on the roof.  
**Created By :** National TAB                      **Assigned To :** National TAB - Kristopher Passley  
**Status :** Open  
**Priority :** Medium                                      **Asset Tag :**  
**Originated Date :** 12/12/2024 - Kristopher Passley - National TAB

Project Issue File Details



12/12/2024



12-09-2024 FREDDY'S - HUNTSVILLE, AL

Project Issue Information

**Issue Name :** KEF-1 Grease Pan  
**Description :** Grease pan was not installed on KEF-1. Recommend having mechanical install.  
**Created By :** National TAB                      **Assigned To :** National TAB - Kristopher Passley  
**Status :** Open  
**Priority :** Medium                                      **Asset Tag :**  
**Originated Date :** 12/12/2024 - Kristopher Passley - National TAB

Project Issue File Details



12/12/2024



12-09-2024 FREDDY'S - HUNTSVILLE, AL

Project Issue Information

**Issue Name :** KEF-2 Bolts  
**Description :** KEF-3 is currently not bolted to the curb.  
**Created By :** National TAB                      **Assigned To :** National TAB - Kristopher Passley  
**Status :** Open  
**Priority :** Medium                                      **Asset Tag :**  
**Originated Date :** 12/12/2024 - Kristopher Passley - National TAB

Project Issue File Details



12/12/2024



12/12/2024



12/12/2024



12-09-2024 FREDDY'S - HUNTSVILLE, AL

**Project Issue Information**

**Issue Name :** KEF-2 Grease Pan  
**Description :** Grease pan was not installed on KEF-2. Recommend having mechanical install.  
**Created By :** National TAB                      **Assigned To :** National TAB - Kristopher Passley  
**Status :** Open  
**Priority :** Medium                                      **Asset Tag :**  
**Originated Date :** 12/12/2024 - Kristopher Passley - National TAB

Project Issue File Details



12/12/2024



**12-09-2024 FREDDY'S - HUNTSVILLE, AL**

**Project Issue Information**

**Issue Name :** RTU-1 Final Filter  
**Description :** Factory final filters are currently installed in RTU-1. Recommend installed MERV 8 or better filters in unit. 4 count 20"X20"X2"  
**Created By :** National TAB                      **Assigned To :** National TAB - Kristopher Passley  
**Status :** Open  
**Priority :** High                                      **Asset Tag :**  
**Originated Date :** 12/12/2024 - Kristopher Passley - National TAB

Project Issue File Details



12/12/2024



**12-09-2024 FREDDY'S - HUNTSVILLE, AL**

**Project Issue Information**

**Issue Name :** RTU-1 Ventilation Noise  
**Description :** Unit is loud inside the dining area.  
**Created By :** National TAB                      **Assigned To :** National TAB - Kristopher Passley  
**Status :** Open  
**Priority :** InfoOnly                                      **Asset Tag :**  
**Originated Date :** 12/12/2024 - Kristopher Passley - National TAB