

**Report By:**

National TAB  
1329 E. KEMPER ROAD  
SUITE 4210  
CINCINNATI, OH 45246



**Report: TAB REPORT**  
**Function: Test, Adjust, & Balance**  
**Date: 03/03/2026**  
**Completed By: National TAB**

# PROJECT

**02-23-26 WAWA #6902 MARTINSBURG, WV**

HEDGESVILLE RD & ROCK CLIFF RD

MARTINSBURG, WV 25403

**Client**

Wawa  
260 West Baltimore Pike

Wawa, PA 19063

# National TAB

Project: 02-23-26 WAWA #6902 MARTINSBURG, WV

## Table Of Contents

<b>Section</b>	<b>Page #</b>
Summary	3
Remarks	4
Checklist	10
AHU/RTU	21
FAN - Exhaust	27
GRD	32



# National TAB

Project: 02-23-26 WAWA #6902 MARTINSBURG, WV  
Function: Test, Adjust, & Balance

## Project Summary

### Project Summary

The summary below provides a quick understanding of our scope of work and general testing procedures. Enclosed in the report is further detail about your building performance including recommendations, asset data, and pictures. Our focus is to work with the trades to remedy any issues or deficiencies during the actual field balancing and not after the balancing has occurred to achieve a positive environment and outcome. The level of success is determined by the availability of the trades, possible parts needed, or time constraints.

### RTU's (Roof Top Units) w/ Diffusers

Each of the RTU's were measured at their terminal devices or via traverse to establish a total flow for that unit. Each RTU was adjusted to within tolerance of the engineer's design flow. Each outlet was then adjusted to within tolerance of the design flow. Outside air was measured by reading the intake air opening with a velocity grid and multiplying by the free area. The outside air damper was adjusted until the airflow was within the design requirements. Any equipment that fell outside of that tolerance is noted throughout the report.

### General Exhaust Fans w/ Grilles

The general exhaust fans were measured by reading each air device with a flow hood. The total airflow for each fan is equivalent to the sum of these readings. Fan speed was then adjusted so that the airflow was within tolerance of design. Each terminal device was balanced to within tolerance of the design volume using the installed volume dampers. Any equipment that fell outside of this tolerance is noted throughout the report.

### Ceiling Exhaust Fans

The ceiling exhaust fans were measured using a flow hood. If speed adjustment was provided, the fan speed was adjusted to within design tolerance. Any equipment that fell outside of this tolerance is noted throughout the report.

### Final Building Tests

After completing the test and balance the final building pressure was measured. It was confirmed that the building pressure fell within acceptable tolerances and that the pressure measurement coincides with the actual and design net airflow. Any deviations from these standards are noted throughout the report

## Issue List

- EF-2 Duct Drop Sizing
- EF-3 Not Running
- Front Vestibule Supply Grille
- RTU-2 Alarm
- RTU-3 Vibration and Noise

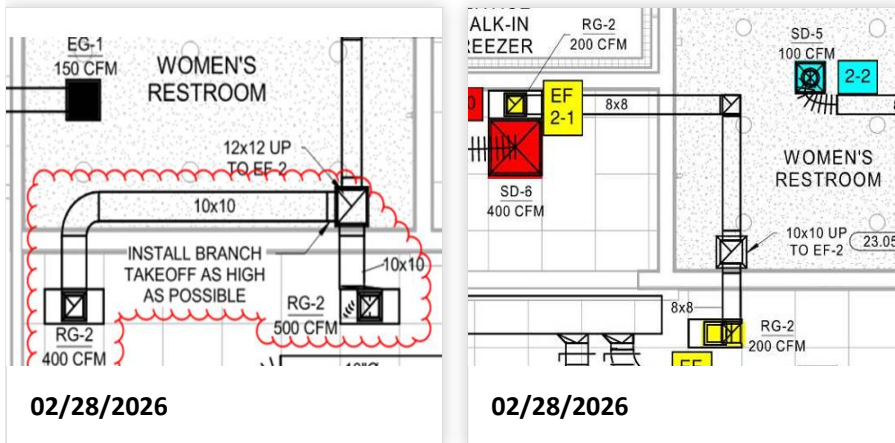


02-23-26 WAWA #6902 MARTINSBURG, WV

**Project Issue Information**

**Issue Name :** EF-2 Duct Drop Sizing  
**Description :** Duct going up to roof is 10"x10", needs to be 12"x12" as per change "CI-2025-090-M1".  
**Created By :** National TAB **Assigned To :** National TAB - Brianna Biggs  
**Status :** Open  
**Priority :** Medium **Asset Tag :** EF2  
**Originated Date :** 02/28/2026 - John Barresi - National TAB

Project Issue File Details





02-23-26 WAWA #6902 MARTINSBURG, WV

Project Issue Information

**Issue Name :** EF-3 Not Running  
**Description :** Not running at time of balance, missing grille cover. Unit is also missing a speed controller.  
**Created By :** National TAB                      **Assigned To :** National TAB - Brianna Biggs  
**Status :** Open  
**Priority :** High                                      **Asset Tag :** EF3  
**Originated Date :** 02/28/2026 - John Barresi - National TAB

Project Issue File Details



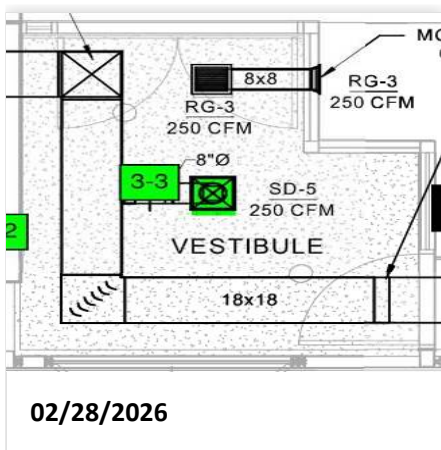


02-23-26 WAWA #6902 MARTINSBURG, WV

Project Issue Information

**Issue Name :** Front Vestibule Supply Grille  
**Description :** Cannot reach duct damper for Supply 3-3. Supply Grille 3-3 does not have a face damper installed.  
**Created By :** National TAB                      **Assigned To :** National TAB - Brianna Biggs  
**Status :** Open  
**Priority :** Medium                                      **Asset Tag :** RTU3  
**Originated Date :** 02/28/2026 - John Barresi - National TAB

Project Issue File Details



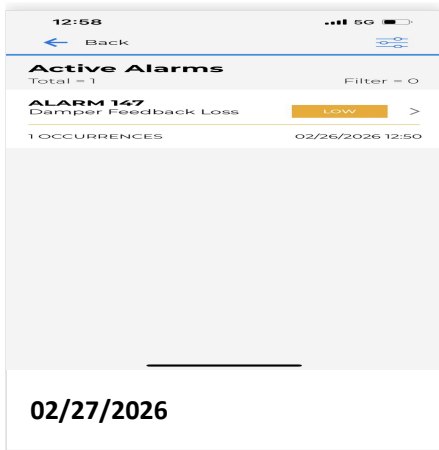


**02-23-26 WAWA #6902 MARTINSBURG, WV**

**Project Issue Information**

**Issue Name :** RTU-2 Alarm  
**Description :** Unit is giving Alarm 147 for "Damper Feedback Loss".  
**Created By :** National TAB                      **Assigned To :** National TAB - Brianna Biggs  
**Status :** Open  
**Priority :** Low                                      **Asset Tag :** RTU2  
**Originated Date :** 02/27/2026 - John Barresi - National TAB

Project Issue File Details





## CheckList List

- 01: RTU'S/AHU'S
- 02: LENNOX SETUP PARAMETERS
- 03: SENSOR WIRING
- 04: EF'S
- 05: CLOSEOUT CHECKS



02-23-26 WAWA #6902 MARTINSBURG, WV

**CheckList Information**

**Name :** 01: RTU'S/AHU'S **Status :** Not Completed  
**Assigned Organization :** National TAB **Asset :**  
**Requesting Organization :** National TAB  
**Created Date :** 12/05/2025 - Tyce Fox - National TAB

**CheckList Item Details**

RTU's/AHU's

All diffusers and grilles are installed and match design? Pass

Comment:

Clean filters installed? Pass

Comment:

Economizers are assembled and functional? Pass

Comment:

Motors are all operating below the FLA rating?

Comment:

Are belts tight? N/A

Comment:

If direct drive unit is the speed controller working? Pass

Comment:

Is gas piping installed and valves turned on? N/A

**Comment:**

Electric Heating installed to units.

---

**Condensate drains are installed?**

Pass

---

**Comment:**

---

**Unit free of noticeable noise and vibration**

---

**Comment:**

---

**Final outside air damper position is marked with permanent marker?**

---

**Comment:**

---

**No alarms present?**

---

**Comment:**

---

**Any noticeable duct leakage?**

Pass

---

**Comment:**

---

**Total supply and OA flows are balanced within +/-5% and supply & return diffusers within +/-10%?**

---

**Comment:**

---

**Adjust side wall diffusers on spiral duct that blow towards the coffee island drop-in to prevent issues with it staying at temperature. Fan out of the deflector blades or reduce airflow as necessary to prevent drafting.**

---

**Comment:**

---

**IN TEST MODE, TEST THE FOLLOWING:**

---

**Cooling mode is operational? Record EAT/LAT for each unit:**

---

**Comment:**

---

**Heating mode is operational? Record EAT/LAT for each unit:**

---

**Comment:**

---

**Dehumidification mode is operational? (Feel dehumidification coil with your hand. Is it hot?) Record EAT/LAT for each unit:**

Comment:



02-23-26 WAWA #6902 MARTINSBURG, WV

CheckList Information

**Name :** 02: LENNOX SETUP PARAMETERS **Status :** Not Completed  
**Assigned Organization :** National TAB **Asset :**  
**Requesting Organization :** National TAB  
**Created Date :** 12/05/2025 - Tyce Fox - National TAB

CheckList Item Details

UNIT ID CONFIGURATIONS

BACNET CONFIGURATION: GO TO SETTINGS>GENERAL>CONFIGURATION ID1 POSITION 5 SET TO "N".

Comment:

NETWORK CONFIGURATION: GO TO SETUP>NETWORK INTEGRATION, SET TO BACNET IP Pass

Comment:

CONTROL MODE: SET CONTROL MODE TO ROOM SENSOR: CO2, TEMP & HUMIDITY (PER UNIT, AS NEEDED). Pass

Comment:

INDIVIDUAL PARAMETER CONFIGURATIONS (MECHANICAL CONTRACTOR TO DEFINE / AS APPLICABLE):

PARAMETER 105 DEHUMID MODE: 7 NO CONDITIONS Pass

Comment:

PARAMETER 106 DEHUMID SETPOINT: 50, THIS IS A CENTERED SET POINT (+/-) Yes

Comment:

PARAMETER 107 DEHUMID DEADBAND: 3 (DEFAULT) THIS IS THE ACTUAL +/- VALUE Pass

Comment:

PARAMETER 117 CO2 DAMPER MAX OPEN: 50%

Pass

Comment:

PARAMETER 118 CO2 START OPEN PPM: 1500

Pass

Comment:

PARAMETER 119 CO2 MAX OPEN PPM: 1500

Pass

Comment:

PARAMETER 137 OCCHET SET POINT: 68 (BACK UP)

Pass

Comment:

PARAMETER 131 SET TO THE SAME % AS THE MINMIUM OA DAMPER SETPOINT

N/A

Comment:

Units set to 100%.

PARAMETER 139 OCC COOLING SET POINT: 72 (BACK UP)

Comment:

PARAMETER 154 OCC BLOWER MODE: ON-CONTINUOUS 1

Pass

Comment:

CFM VALUES / MSAV FAN SPEEDS (AIR BALANCER TO DEFINE / IF APPLICABLE):

OA DAMPER SET TO SAME POSITION IN ALL FAN SPEEDS?

Comment:

ALL FAN SPEEDS SET TO THE SAME CFM VALUE (ENTER SETPOINTS BELOW)

Comment:

HEAT CFM VALUE: PER THE HVAC SCHEDULE

Comment:

HIGH COOL CFM VALUE: THE HIGH COOL CFM VALUE

**Comment:**

---

**LOW COOL CFM VALUE: MATCH THE HIGH COOL CFM VALUE**

**Comment:**

---

**VENTILATION CFM VALUE: MATCH THE HIGH COOL CFM VALUE**

**Comment:**

---



**02-23-26 WAWA #6902 MARTINSBURG, WV**

**CheckList Information**

**Name :** 03: SENSOR WIRING **Status :** Not Completed  
**Assigned Organization :** National TAB **Asset :**  
**Requesting Organization :** National TAB  
**Created Date :** 12/05/2025 - Tyce Fox - National TAB

**CheckList Item Details**

**COMBINATION TEMPERATURE/HUMIDITY SENSOR**

Sensors are installed where shown on the drawing?

Comment:

2 conductor shielded cable has one wire landed to Vin, one to GND, and the shield wire is not connected.

Comment:

For second shielded cable, one wire is landed to Vout and the shield wire is not connected.

Comment:

Verify that the CORE or Prodigy controller is sensing a relative humidity (record the reading)

Comment:



**02-23-26 WAWA #6902 MARTINSBURG, WV**

**CheckList Information**

**Name :** 04: EF'S **Status :** Not Completed  
**Assigned Organization :** National TAB **Asset :**  
**Requesting Organization :** National TAB  
**Created Date :** 12/05/2025 - Tyce Fox - National TAB

**CheckList Item Details**

EF's

---

**Rotation is correct?**

**Comment:**

---

**Belts are tight (if applicable)?**

**Comment:**

---

**Speed controller installed and functional (if applicable)?**

**Comment:**

---

**There is no major leakage around base of fan?**

**Comment:**

---

**Is the motor operating below the motor FLA rating?**

**Comment:**

---

**Back draft damper installed and can it fully open?**

**Comment:**

---

**Unit free of noticeable noise and vibration?**

---

**Comment:**

---

**Total exhaust flow balanced within +/-5% and grilles are within +/-10%?**

---

**Comment:**

---



**02-23-26 WAWA #6902 MARTINSBURG, WV**

**CheckList Information**

**Name :** 05: CLOSEOUT CHECKS **Status :** Not Completed  
**Assigned Organization :** National TAB **Asset :**  
**Requesting Organization :** National TAB  
**Created Date :** 12/05/2025 - Tyce Fox - National TAB

**CheckList Item Details**

**SPACE COMFORT**

**Is space free of drafting?**

**Comment:**

**Is space comfortable in all areas?**

**Comment:**

**Is the space free of ventilation noise?**

**Comment:**

**BUILDING PRESSURE**

**Do actual net building airflow, design net building airflow, and pressure coincide? If not why? (All three should either be positive or negative)**

**Comment:**

# National TAB

Project: 02-23-26 WAWA #6902 MARTINSBURG, WV

System/Unit: AHU/RTU



Asset: RTU1

AREA:BOH

Unit Data		
	Design	Actual
MFG	LENNOX	LENNOX
Serial Num	-	5625D00786
Model Num	LCT150H4E	LCT150H4E
Type	RTU	RTU
Configuration	VERTICAL	VERTICAL
Num OA Filters 1	-	2
OA Filter Size 1	-	14.25"X23"
Num Final Filter 1	-	4
Final Filter Size 1	-	20"X25"X2"

Motor Data		
	Design	Actual
Motor MFG	-	EMBAPST
Frame	-	N/L
Horsepower	-	2970W
Motor Rpm	-	1780
Phase	3	3
Rated Voltage	208	200
Rated Amperage	-	8.0

Drive Data	
	Actual
Motor Sheave Size	DD
Motor Bore Size	DD
Motor Sheave SetPt	DD
Fan Sheave Size	DD
Fan Sheave Bore	DD
Belt CL Distance	DD
Num of Belts	DD
Belt Size	DD
Belt Alignment	DD

Test Data		
	Design	Actual
SF CFM	4500	
SF RPM	-	
RA CFM	3800	
OA CFM	700	
RL Voltage	-	
RL Amperage	-	
SF Rotation	-	
SF System SetPt	-	
RA Damper Position	-	
Min OA Damper Position	-	
Min OA Damper Type	-	
OA Enthalpy Setpt	-	

Performance Data		
	Design	Actual
MA Plenum SP	-	
Fan Suction SP	-	
Fan Discharge SP	-	
Total ESP	0.70"	
Fan Total SP	-	

General	
	Actual
Fan Rotation Correct	YES
Unit Filters Clean	YES
Condensate Drain Installed	YES

**Notes:**

Currently balanced to overall air; electricity was cut off around midday and RTUs were not turned back on after electrical work was performed, power disconnects on roof are switched to "ON" for all RTUs.

Written By: John Barresi on 02/27/2026

# National TAB

Project:02-23-26 WAWA #6902 MARTINSBURG, WV

## AHU/RTU



### Diffuser Supply (GRD)

#### RTU1/BOH

Asset									
Asset Name	Location	Type	Size	DESIGN CFM	AK	CFM(1)	CFM(2)	FINAL CFM	% to design
SGRD1	FOOD SERVICE	SD6	10"	425	1	416	468	468	110.1
SGRD2	FOOD SERVICE	SD6	10"	425	1	504	567	567	133.4
SGRD3	FOOD SERVICE	SD6	10"	425	1	496	558	558	131.3
SGRD4	FOOD SERVICE	SD6	10"	425	1	440	495	495	116.5
SGRD5	FOOD SERVICE	SD6	12"	425	1	450	506	506	119.1
SGRD6	COFFEE	SD6	10"	500	1	179	201	201	40.2
SGRD7	TRASH	SD1	10"	300	1	362	407	407	135.7
SGRD8	BOH	SD6	10"	400	1	436	491	491	122.8
SGRD9	BOH	SD6	10"	400	1	472	531	531	132.8
SGRD10	BOH	SD6	10"	400	1	388	437	437	109.3
SGRD11	ELECTRICAL	SD1	10"	375	1	56	63	63	16.8
Total				4500		4199	4724	4724	104.98%

### Diffuser Ret/Exh (GRD)

#### RTU1/BOH

Asset									
Asset Name	Location	Type	Size	DESIGN CFM	AK	CFM(1)	CFM(2)	FINAL CFM	% to design
EGRD1	BOH	RG1	16X14	1200					-
EGRD2	BOH	RG1	14"	865					-
EGRD3	BOH	RG1	14"	865					-
EGRD4	BOH	RG1	14"	870					-
Total				3800		0	0	0	0%

# National TAB

Project: 02-23-26 WAWA #6902 MARTINSBURG, WV

System/Unit: AHU/RTU



Asset: RTU2

AREA:SALES

Unit Data		
	Design	Actual
MFG	LENNOX	LENNOX
Serial Num	-	5625C07148
Model Num	LCT102H4E	LCT102H4E
Type	RTU	RTU
Configuration	VERTICAL	VERTICAL
Num OA Filters 1	-	2
OA Filter Size 1	-	14.25"X23"
Num Final Filter 1	-	4
Final Filter Size 1	-	20"X25"X2"

Motor Data		
	Design	Actual
Motor MFG	-	EBMPAPST
Frame	-	N/L
Horsepower	-	2970W
Motor Rpm	-	1780
Phase	3	3
Rated Voltage	208	200
Rated Amperage	-	8.0

Drive Data	
	Actual
Motor Sheave Size	DD
Motor Bore Size	DD
Motor Sheave SetPt	DD
Fan Sheave Size	DD
Fan Sheave Bore	DD
Belt CL Distance	DD
Num of Belts	DD
Belt Size	DD
Belt Alignment	DD

Test Data		
	Design	Actual
SF CFM	3400	
SF RPM	-	
RA CFM	3020	
OA CFM	380	
RL Voltage	-	
RL Amperage	-	
SF Rotation	-	
SF System SetPt	-	
RA Damper Position	-	
Min OA Damper Position	-	
Min OA Damper Type	-	
OA Enthalpy Setpt	-	

Performance Data		
	Design	Actual
MA Plenum SP	-	
Fan Suction SP	-	
Fan Discharge SP	-	
Total ESP	1"	
Fan Total SP	-	

General	
	Actual
Fan Rotation Correct	YES
Unit Filters Clean	YES
Condensate Drain Installed	YES

# National TAB

Project:02-23-26 WAWA #6902 MARTINSBURG, WV

## AHU/RTU



### Diffuser Supply (GRD)

#### RTU2/SALES

Asset									
Asset Name	Location	Type	Size	DESIGN CFM	AK	CFM(1)	CFM(2)	FINAL CFM	% to design
SGRD1	RESTROOM	SD5	8"	200					-
SGRD2	WOMENS RR	SD5	8"	100					-
SGRD3	HALLWAY	SD1	8"	200					-
SGRD4	MENS RR	SD5	8"	250					-
SGRD5	DELIVERY ROOM	SD1	8"	275					-
SGRD6	RETAIL	SD2	16"	275					-
SGRD7	RETAIL	SD2	16"	275					-
SGRD8	RETAIL	SD2	12"	275					-
SGRD9	RETAIL	SD2	12"	275					-
SGRD10	RETAIL	SD2	12"	275					-
SGRD11	RETAIL	SD2	12"	275					-
SGRD12	RETAIL	SD2	12"	275					-
SGRD13	RETAIL	SD2	12"	300					-
SGRD14	RETAIL	SD2	16"	275					-
Total				3525		0	0	0	0%

# National TAB

Project: 02-23-26 WAWA #6902 MARTINSBURG, WV

System/Unit: AHU/RTU



Asset: RTU3

AREA:FOH

Unit Data		
	Design	Actual
MFG	LENNOX	LENNOX
Serial Num	-	5625D02291
Model Num	LCT072H4E	LCT072H4E
Type	RTU	RTU
Configuration	VERTICAL	VERTICAL
Num OA Filters 1	-	1
OA Filter Size 1	-	28"X14.25"
Num Final Filter 1	-	4
Final Filter Size 1	-	20"X20"X2"

Motor Data		
	Design	Actual
Motor MFG	-	EBMPAPST
Frame	-	N/L
Horsepower	-	1600W
Motor Rpm	-	3300
Phase	3	3
Rated Voltage	208	230
Rated Amperage	-	4.4

Drive Data	
	Actual
Motor Sheave Size	DD
Motor Bore Size	DD
Motor Sheave SetPt	DD
Fan Sheave Size	DD
Fan Sheave Bore	DD
Belt CL Distance	DD
Num of Belts	DD
Belt Size	DD
Belt Alignment	DD

Test Data		
	Design	Actual
SF CFM	2400	2307
SF RPM	-	
RA CFM	200	
OA CFM	200	
RL Voltage	-	
RL Amperage	-	
SF Rotation	-	
SF System SetPt	-	98%
RA Damper Position	-	
Min OA Damper Position	-	
Min OA Damper Type	-	ECONOMIZER
OA Enthalpy Setpt	-	

Performance Data		
	Design	Actual
MA Plenum SP	-	
Fan Suction SP	-	
Fan Discharge SP	-	
Total ESP	0.5"	
Fan Total SP	-	

General	
	Actual
Fan Rotation Correct	YES
Unit Filters Clean	YES
Condensate Drain Installed	YES

**Notes:**

Blower setting higher than 98% will cause fan to overamp.  
98% = 4.2-4.3 Amps

Fan speed lowered to 65% to prevent whistling/whooshing noise above registers and to reduce vibration in blower compartment of RTU-3. Unable to reach duct at time of balance 2/26-2/27 due to no access to lift.

Cannot reach duct damper for Supply 3-3; Supply grille does not have a face grille installed.

Electricity was cut off around midday and RTUs were not turned back on after electrical work was performed, power di

Written By: John Barresi on 02/27/2026

# National TAB

Project:02-23-26 WAWA #6902 MARTINSBURG, WV  
AHU/RTU



**Diffuser Supply (GRD)**

**RTU3/FOH**

<b>Asset</b>									
<b>Asset Name</b>	<b>Location</b>	<b>Type</b>	<b>Size</b>	<b>DESIGN CFM</b>	<b>AK</b>	<b>CFM(1)</b>	<b>CFM(2)</b>	<b>FINAL CFM</b>	<b>% to design</b>
SGRD1	ASSOCIATE AREA	SD1	8"	200	1	277	187	187	93.5
SGRD2	OFFICE	SD1	8"	150	1	177	153	153	102.0
SGRD3	VESTIBULE	SD5	8"	250	1	439	470	470	188.0
SGRD4	FOH	SD2	18"	450					-
SGRD5	FOH	SD2	18"	450					-
SGRD6	FOH	SD2	14"	450					-
SGRD7	FOH	SD2	14"	450					-
<b>Total</b>				2400		893	810	810	33.75%

# National TAB

Project: 02-23-26 WAWA #6902 MARTINSBURG, WV

## System/Unit: FAN - Exhaust



Asset: EF1

AREA:RESTROOMS

Unit Data		
	Design	Actual
MFG	GREENHECK	GREENHECK
Model Num	GB-098-6	GB-098-6
Serial Num	-	27000344 25E
Type	DOWNBLAST	DOWNBLAST
Configuration	VERTICAL	VERTICAL

Motor Data		
	Design	Actual
Motor MFG	-	US MOTORS
Frame	-	N/L
Horsepower	0.167	0.167
Motor Rpm	-	1725
Phase	1	1
Voltage (rated)	120	115
Amperage (rated)	-	3.8
Service Factor	-	1.35

Test Data		
	Design	Actual
CFM	375	354
Fan RPM	-	1112
Fan Rotation	-	CW
Motor RPM	-	1764
System SetPt	-	3 TURNS OUT
RL Voltage	-	N/A
RL Amperage	-	N/A
Total ESP	0.38"	0.26"
Fan Inlet SP	-	-0.26"
Fan Discharge SP	-	ATM

Completed By: John Barresi on 02/27/2026

# National TAB

Project:02-23-26 WAWA #6902 MARTINSBURG, WV

## FAN - Exhaust



### Diffuser Ret/Exh (GRD)

#### EF1/RESTROOMS

Asset									
Asset Name	Location	Type	Size	DESIGN CFM	AK	CFM(1)	CFM(2)	FINAL CFM	% to design
EGRD1	WOMENS RR	EG 1	8X8	150	1	145	145	145	96.7
EGRD2	MENS RR	EG 1	8X8	225	1	209	209	209	92.9
Total				375		354	354	354	94.4%

# National TAB

Project: 02-23-26 WAWA #6902 MARTINSBURG, WV

## System/Unit: FAN - Exhaust



Asset: EF2

AREA:BOH

Unit Data		
	Design	Actual
MFG	GREENHECK	GREENHECK
Model Num	GB-098-6	G-120-4-VG-1-19-X
Serial Num	-	28509103 25L
Type	DOWNBLAST	DOWNBLAST
Configuration	VERTICAL	VERTICAL

Motor Data		
	Design	Actual
Motor MFG	-	VARI-GREEN
Frame	-	N/L
Horsepower	0.167	0.25
Motor Rpm	-	1750
Phase	1	1
Voltage (rated)	120	115
Amperage (rated)	-	2.85
Service Factor	-	1.25

Test Data		
	Design	Actual
CFM	400	
Fan RPM	-	
Fan Rotation	-	
Motor RPM	-	
System SetPt	-	
RL Voltage	-	
RL Amperage	-	
Total ESP	0.38"	
Fan Inlet SP	-	
Fan Discharge SP	-	

**Notes:**

Duct going up to roof is 10x10, needs to be 12x12 as per change "CI-2025-090-M1".

Given GRD does not have CI applied, showing 2 exhaust grilles for EF-2 instead of the 3 present in-store.

Written By: John Barresi on 02/27/2026

# National TAB

Project:02-23-26 WAWA #6902 MARTINSBURG, WV

## FAN - Exhaust



### Diffuser Ret/Exh (GRD)

#### EF2/BOH

Asset									
Asset Name	Location	Type	Size	DESIGN CFM	AK	CFM(1)	CFM(2)	FINAL CFM	% to design
EGRD1	BOH	RG 2	8X8	200	1	145	155	155	77.5
EGRD2	FOOD SERVICE	RG 2	8X8	400	1	323	351	351	87.8
EGRD3	FOOD SERVICE	RG 2	10X10	500	1	363	391	391	78.2
Total				1100		831	897	897	81.55%

# National TAB

Project: 02-23-26 WAWA #6902 MARTINSBURG, WV

## System/Unit: FAN - Exhaust



Asset: EF3

AREA:TRASH ROOM

Unit Data		
	Design	Actual
MFG	GREENHECK	GREENHECK
Model Num	SP-B200	SP-B200-QD
Serial Num	-	198306801-0051 25E
Type	CEILING	CEILING
Configuration	VERTICAL	VERTICAL

Motor Data		
	Design	Actual
Motor MFG	-	GRENHECK
Frame	-	N/L
Horsepower	0.167	0.033
Motor Rpm	-	1000
Phase	1	1
Voltage (rated)	120	115
Amperage (rated)	-	2.7
Service Factor	-	N/L

Test Data		
	Design	Actual
CFM	200	
Fan RPM	-	
Fan Rotation	-	
Motor RPM	-	
System SetPt	-	
RL Voltage	-	
RL Amperage	-	
Total ESP	0.50"	
Fan Inlet SP	-	
Fan Discharge SP	-	

**Notes:**

Not running at time of balance, missing grille cover.

Written By: John Barresi on 02/27/2026

