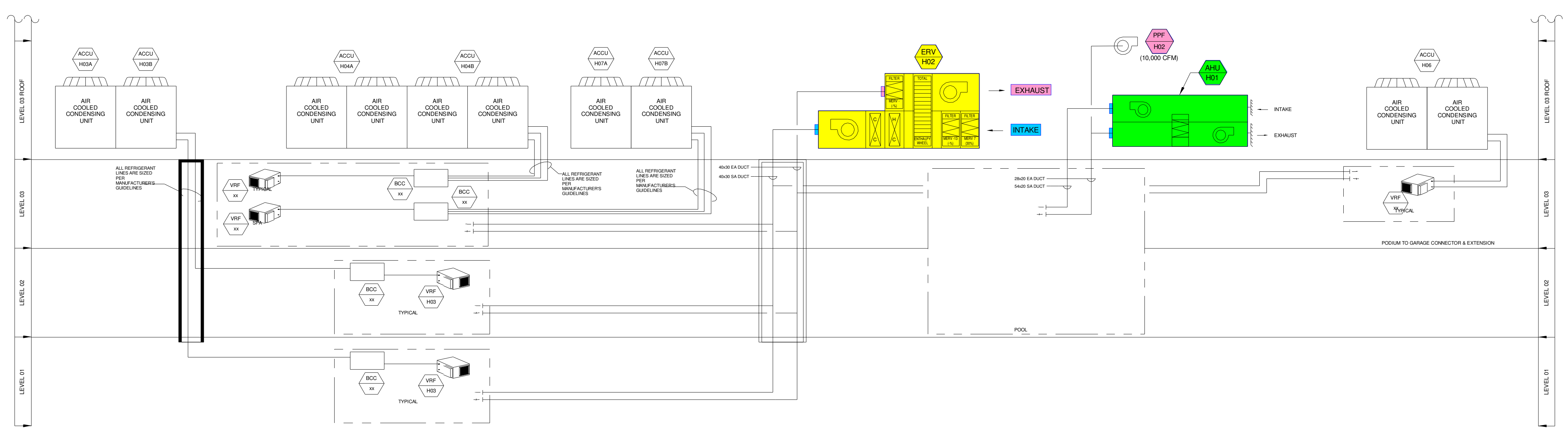
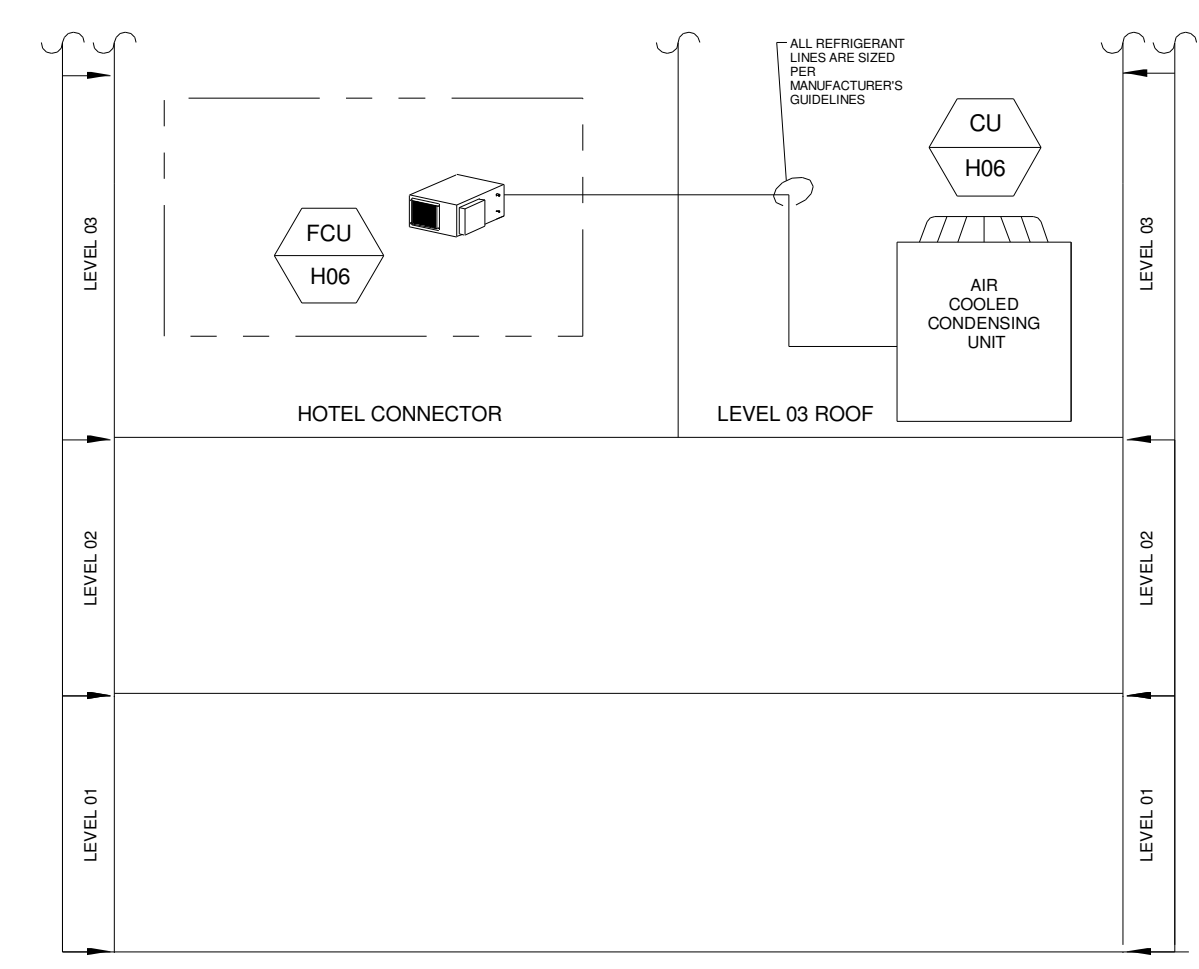


DATE PLOTTED: 12/21/23 10:58 AM | DRAWN: MWM | CHECKED: MWM | PROJECT: 230000000000000000 | SHEET: M-702 | TITLE: HVAC RISER DIAGRAM - LEVEL 1 TO 3



2 PODIUM RISER DIAGRAM - LEVEL 1 TO 3



1 HOTEL RISER DIAGRAM - CONNECTOR

# Additions and Renovations to Harrah's Cherokee Valley River

777 Casino Parkway  
Murphy, NC 28906

**JCJ ARCHITECTURE**  
120 HUYSHOPE AVENUE  
SUITE 400  
HARTFORD, CT 06106  
860.247.9226

© 2022 JCJ Architecture  
**CONSULTANT:**  
**VANDERWEIL**  
E.C. Vanderweil Engineers, LLP  
274 Summer Street  
Boston, MA 02210  
617.433.7433 FAX  
617.433.7401 PAX  
vanderweil.com

PERMIT SET  
01/31/2023



ISSUE	12/22/2022
JOB	30611.00
DRAWN	MWM
SCALE	NTS
REVISIONS	

HVAC RISER DIAGRAM

M-702

**Additions and Renovations to Harrah's Cherokee Valley River**  
 777 Casino Parkway  
 Murphy, NC 28906

**JCJ ARCHITECTURE**

120 HUYSHOPE AVENUE  
 SUITE 400  
 HARTFORD, CT 06106  
 860.247.9226

© 2022 JCJ Architecture

CONSULTANT:

**VANDERWEIL**  
 B.C. Vanderweil Engineers, LLP  
 274 Summer Street  
 Boston, MA 02119  
 617.433.3433 FAX  
 617.433.2401 FAX  
 vanderweil.com

- GENERAL NOTES:**
- A. SEE PIPING PLANS FOR CONDENSATE AND VRF PIPING.
- KEYNOTES:**
1. EACH DRYER IS PROVIDED WITH INDIVIDUAL 4" VENT DUCT CONNECTED TO 12" VENT HEADER WITH SECONDARY LINT TRAP (EQUAL TO TJERNLUND MODEL L74) MOUNTED AT 5" 0" ABOVE FINISH FLOOR TO CENTER OF LINT TRAP SUCH THAT IT IS VISIBLE ABOVE DRYER.
  2. FAN TO BE INSTALLED ON SUSPENDED PLATFROM FROM STRUCTURE ABOVE PER MANUFACTURER'S INSTRUCTIONS. FINAL LOCATION OF FAN TO BE COORDINATED WITH STORAGE RACKS TO ENSURE NO OBSTRUCTIONS TO THE FAN OR THE STORAGE RACKS.
  3. PROVIDE COMBINATION FIRE-SMOKE DAMPER RATED FOR MINIMUM 3 HR RATED WALL.
  4. OPEN ENDED DUCT WITH ALUMINUM WIRE MESH SCREEN.
  5. PROVIDE 12" HOOD WITH FLAPPER (EQUAL TO TJERNLUND MODEL P/N DEVH2) AND INSTALL PER MANUFACTURER'S INSTRUCTION. HOOD MUST BE MINIMUM 5" 0" FROM DOORS.
  6. POOL EXHAUST DUCTWORK AND BALANCING DAMPERS SHALL BE OF ALUMINUM CONSTRUCTION.
  7. PROVIDE MODULATING PRESSURE CONTROLLER (EQUAL TO TJERNLUND MPC) AND VARIABLE FREQUENCY DRIVE (EQUAL TO TJERNLUND VFD-HIP60MPC). COORDINATE LOCATION PRIOR TO INSTALLING PER MANUFACTURER'S INSTRUCTIONS. REFER TO HVAC CONTROLS ON DRAWING M813.
  8. PROVIDE COMBINATION FIRE-SMOKE DAMPER RATED FOR 3 HR FIRE BARRIER.
  9. OMNI TEMP REFRIGERATION RACK PROVIDED BY OTHERS. COORDINATE WITH ALL TRADES PRIOR TO FINALIZING LOCATION INCLUDING PLUMBING OVERFLOW DRAIN OUTLET, CLEARANCES, AND ACCESSIBILITY TO THE EQUIPMENT.
  10. ONE (1) EXTERIOR LOUVER DOOR FOR AIR INTAKE. PROVIDE MINIMUM 0.75 SF OF FREE AREA TO PROVIDE 365 CFM OF AIR INTAKE. REFER TO ARCHITECTURAL PLANS FOR DETAILS.
  11. ONE (1) EXTERIOR LOUVER DOOR FOR AIR INTAKE. PROVIDE MINIMUM 0.4 SF OF FREE AREA TO PROVIDE 155 CFM OF AIR INTAKE. REFER TO ARCHITECTURAL PLANS FOR DETAILS.
  12. CLEAN EXISTING DIFFUSER AND REINSTALL IN CEILING ALIGNED WITH NEW GRID. ADJUST EXISTING DUCTWORK AS REQUIRED TO INSTALL IN NEW CEILING. TYPICAL.
  13. ROUTE FLUE VENT FROM POOL HEATER TO EXTERIOR WALL AS SHOWN. TERMINATE WITH SIDEWALL VENT TERMINATION PROVIDED WITH HEATER AS PART OF POWER SIDEWALL VENT KIT. VENT SHALL BE CONSTRUCTED OF DOUBLE WALL AL29-FC.
  14. ROUTE COMBUSTION AIR DUCT FROM POOL HEATER TO EXTERIOR WALL AS SHOWN. TERMINATE WITH AIR INLET CAP PROVIDED WITH HEATER AS PART OF POWER SIDEWALL VENT KIT. COMBUSTION AIR DUCT SHALL BE CONSTRUCTED OF TYPE B DOUBLE WALL.
  15. GAS-FIRED POOL HEATER. SEE AQUATIC DRAWINGS FOR SPECIFICATION AND LOCATION.
  16. TWO (2) EXTERIOR LOUVER DOOR (ONE (1) PER EACH DOOR) FOR AIR INTAKE. PROVIDE MINIMUM 0.75 SF OF FREE AREA TO PROVIDE 370 CFM OF AIR INTAKE PER EACH LOUVER. REFER TO ARCHITECTURAL PLANS FOR DETAILS.
  17. PROVIDE FIRE WRAP FOR DRYER VENT EXHAUST STARTING AT WHERE DUCT LEAVES FIRE RATED DRYER ROOM ALL THE WAY TO EXTERIOR TERMINATION.
  18. INSTALL HEATER IN STAIRWELL 80" AFF.









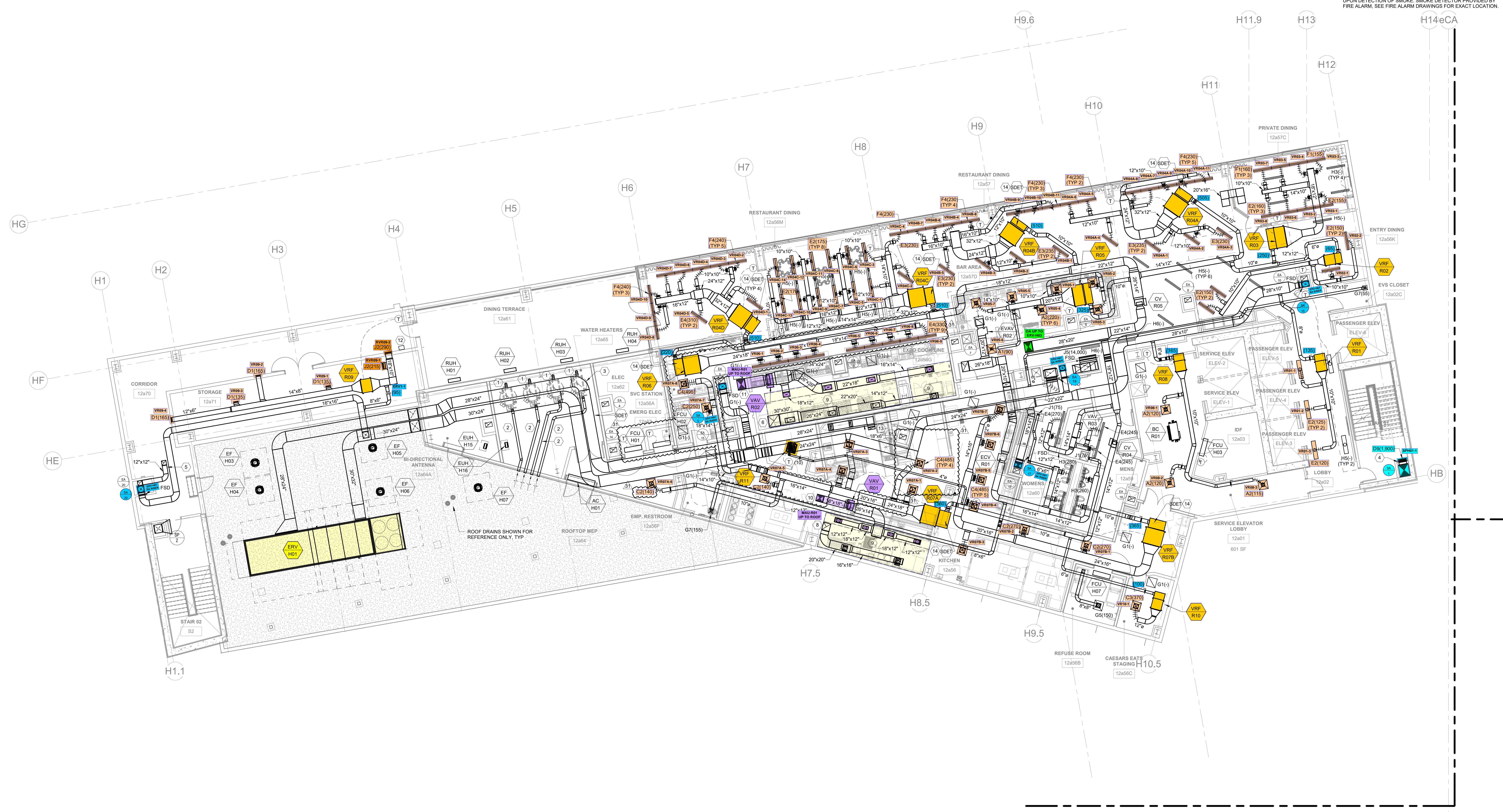
**Additions and Renovations to Harrah's Cherokee Valley River**  
 777 Casino Parkway  
 Murphy, NC 28906

**JCJ ARCHITECTURE**  
 120 HUYSHOPE AVENUE  
 SUITE 400  
 HARTFORD, CT 06106  
 860.247.9226

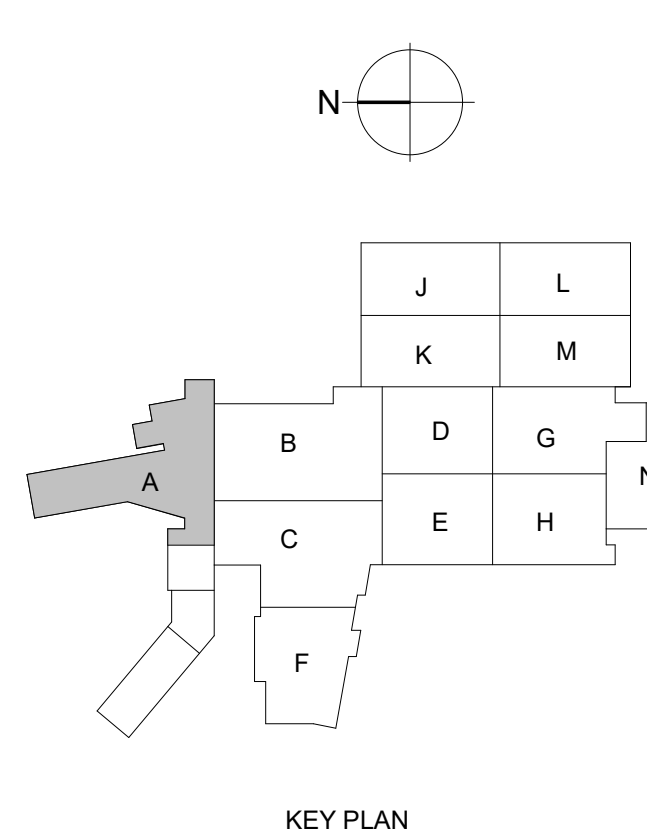
© 2022 JCJ Architecture

**CONSULTANT:**  
**VANDERWEIL**  
 E.C. Vanderweil Engineers, LLP  
 274 Summer Street  
 Boston, MA 02210  
 617.433.2433 TEL  
 617.433.2401 FAX  
 vanderweil.com

- GENERAL NOTES:**
- SEE PIPING PLANS FOR CONDENSATE AND VRF PIPING.
- KEYNOTES:**
- ROUTE 6" FLUE VENT FROM WATER HEATER CONNECTION UP THRU ROOF ABOVE. FLUE VENT SHALL BE CONSTRUCTED UP SCHEDULE 40 SOLID PVC PIPE. INSTALL VENT PER MANUFACTURER INSTRUCTIONS. ANY HORIZONTAL RUNS SHALL SLOPE BACK TOWARDS WATER HEATER AT A MINIMUM OF 1/4 INCH PER LINEAR FOOT.
  - ROUTE 6" COMBUSTION AIR VENT FROM WATER HEATER CONNECTION TO EXTERIOR WALL AS SHOWN. PROVIDE ANGLED WALL CAP WITH WIRE MESH SCREEN AT VENT TERMINATION. MAINTAIN A MINIMUM OF 1" BETWEEN EACH TERMINATION. INSTALL VENT PER MANUFACTURER INSTRUCTIONS.
  - GAS-FIRED WATER HEATER. SEE PLUMBING DRAWINGS FOR MORE INFORMATION. TYPICAL.
  - PROVIDE GEAR TYPE VOLUME DAMPER WITH MEMORY STOPS. YOUNG REGULATOR OR EQUAL. THIS IS TYPICAL FOR ALL STAIR PRESSURIZATION VOLUME DAMPERS.
  - PROVIDE 2-HR FIRE WRAP FROM THE SHAFT PENETRATION TO ROOF PENETRATION.
  - 30"x20" EA UP TO KEF-R01 ON ROOF ABOVE. TRANSITION DUCT TO MATCH FAN CONNECTION SIZE.
  - 12"x12" EA UP TO KEF-R02 ON ROOF ABOVE. TRANSITION DUCT TO MATCH FAN CONNECTION SIZE.
  - 20"x20" EA UP TO KEF-R03 ON ROOF ABOVE. TRANSITION DUCT TO MATCH FAN CONNECTION SIZE.
  - TYPE 1 KITCHEN HOOD. SEE FOOD SERVICE DRAWINGS FOR HOOD INFORMATION. SIZE AND BALANCE ALL EXHAUST DUCT AND MAKE-UP DUCT CONNECTIONS PER FOOD SERVICE PLANS.
  - 18"x18" SA DN FROM MAU-R01 ON ROOF ABOVE.
  - 28"x20" SA DN FROM MAU-R01 ON ROOF ABOVE.
  - PROVIDE SINGLE CONTROLLER EQUAL TO MODEL PASCR165 FOR THE CONTROL OF ALL FOUR PATIO HEATERS.
  - DISHWASHER EXHAUST DUCT SHALL BE ALUMINUM CONSTRUCTION AND SLOPE TOWARDS DISHWASHER CONNECTIONS. DISHWASHER CONNECTIONS TO WAREWASHER BY KITCHEN CONSULTANT. SEE FOOD SERVICE PLANS.
  - SMOKE DETECTOR WIRED TO SHUT DOWN VRF INDOOR UNIT UPON DETECTION OF SMOKE. SMOKE DETECTOR PROVIDED BY FIRE ALARM. SEE FIRE ALARM DRAWINGS FOR EXACT LOCATION.

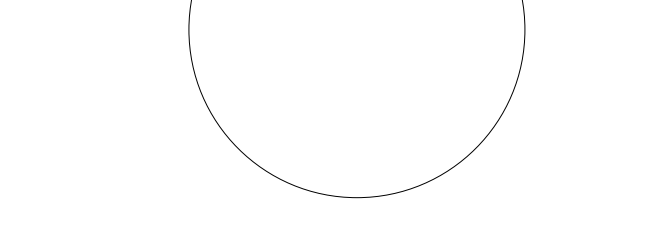


1 HVAC DUCTWORK - TWELFTH FLOOR LEVEL  
 1/8" = 1'-0"



KEY PLAN

**BULLETIN 28**  
 03/29/2024



PIC [PS] DL [CF]  
 PM [SP] DTL [KB]

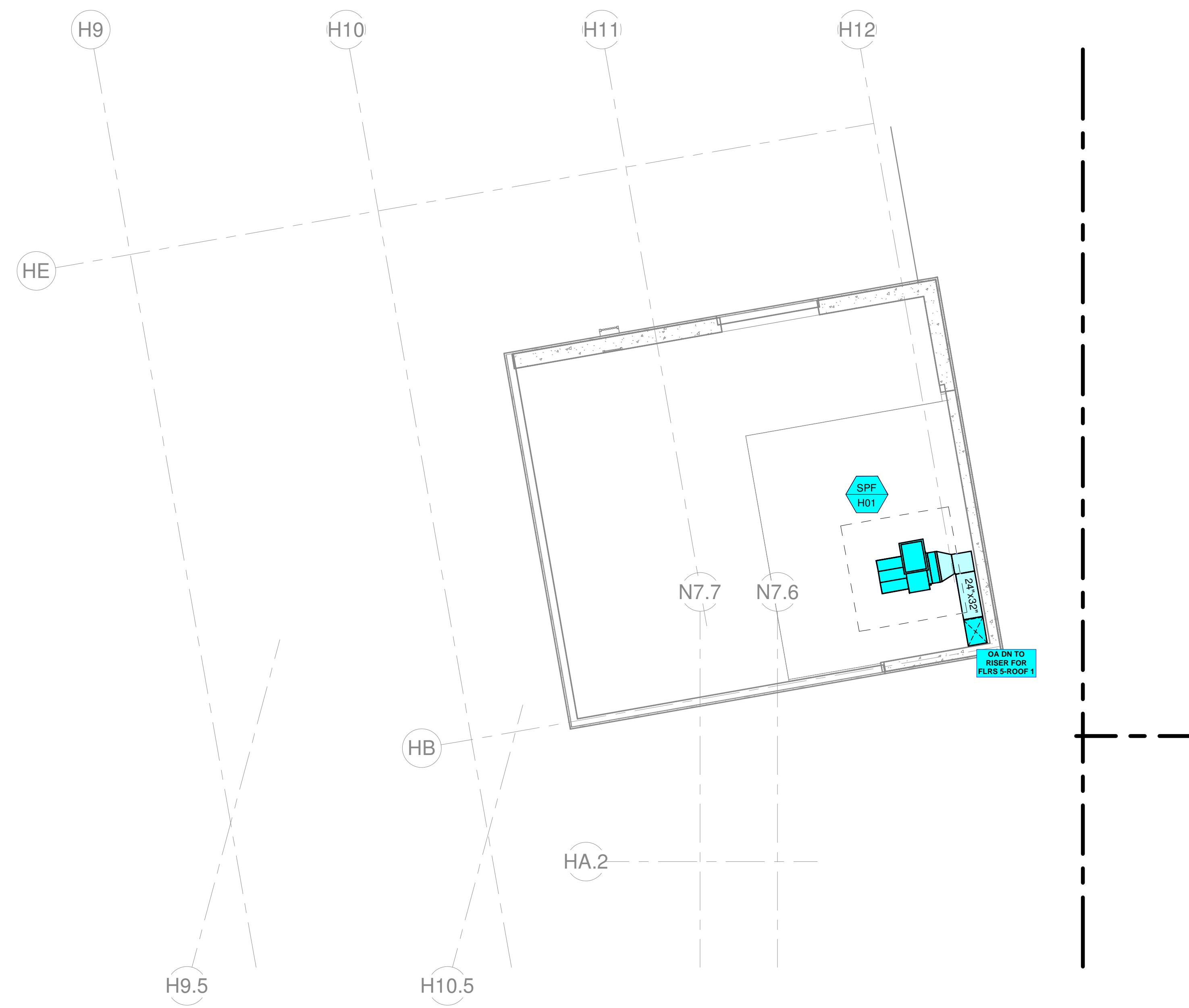
ISSUE	01/31/2023
JOB	30611.00
DRAWN	MWM
SCALE	As indicated
REVISIONS	
5	2023-0214 BULLETIN 01
6	2023-0315 BULLETIN 02
10	2023-0427 BULLETIN 06
28	2024-0115 BULLETIN 22
31	2024-0229 BULLETIN 28

HVAC DUCTWORK - TWELFTH FLOOR LEVEL

**MH-122**



1/20/2023 11:27:07 AM



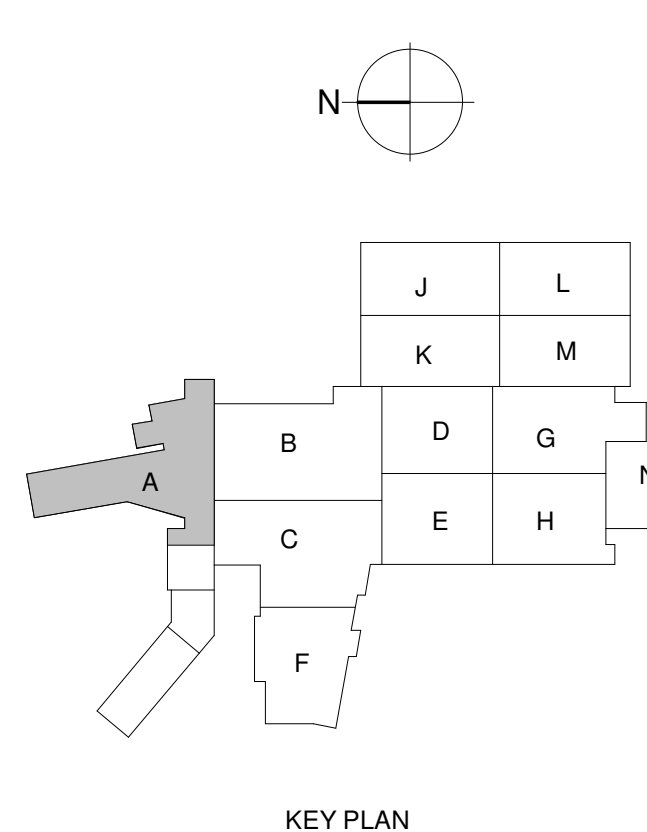
① HVAC DUCTWORK - HOTEL ROOF LEVEL 02  
1/8" = 1'-0"

# Additions and Renovations to Harrah's Cherokee Valley River

777 Casino Parkway  
Murphy, NC 28906

**JCJ ARCHITECTURE**  
120 HUYSHOPE AVENUE  
SUITE 400  
HARTFORD, CT 06106  
860.247.9226

© 2022 JCJ Architecture  
CONSULTANT:  
**VANDERWEIL**  
E.C. Vanderweil Engineers, LLP : 417.433.7433 FAX  
274 Summer Street : 417.433.7401 FAX  
Boston, MA 02210 : vanderweil.com



KEY PLAN

PERMIT SET  
01/31/2023



ISSUE	12/22/2022
JOB	30611.00
DRAWN	MWM
SCALE	1/8" = 1'-0"
REVISIONS	

HVAC DUCTWORK - HOTEL ROOF LEVEL 02

MH-124