

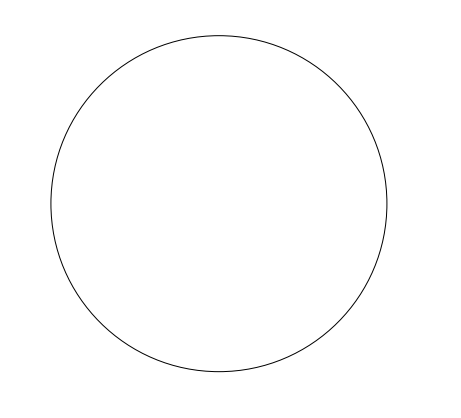
**KEY NOTES:**

- 1 EACH GUESTROOM EXHAUST GRILLE TO BE AMERICAN ALDES SELF-BALANCING EXHAUST/SUPPLY GRILLE OR APPROVED EQUAL.
- 2 EACH GUESTROOM EXHAUST TO CONNECT TO SHAFT UTILIZING A 2" SUBDUCT.



1 HOTEL RISER DIAGRAM - NORTH

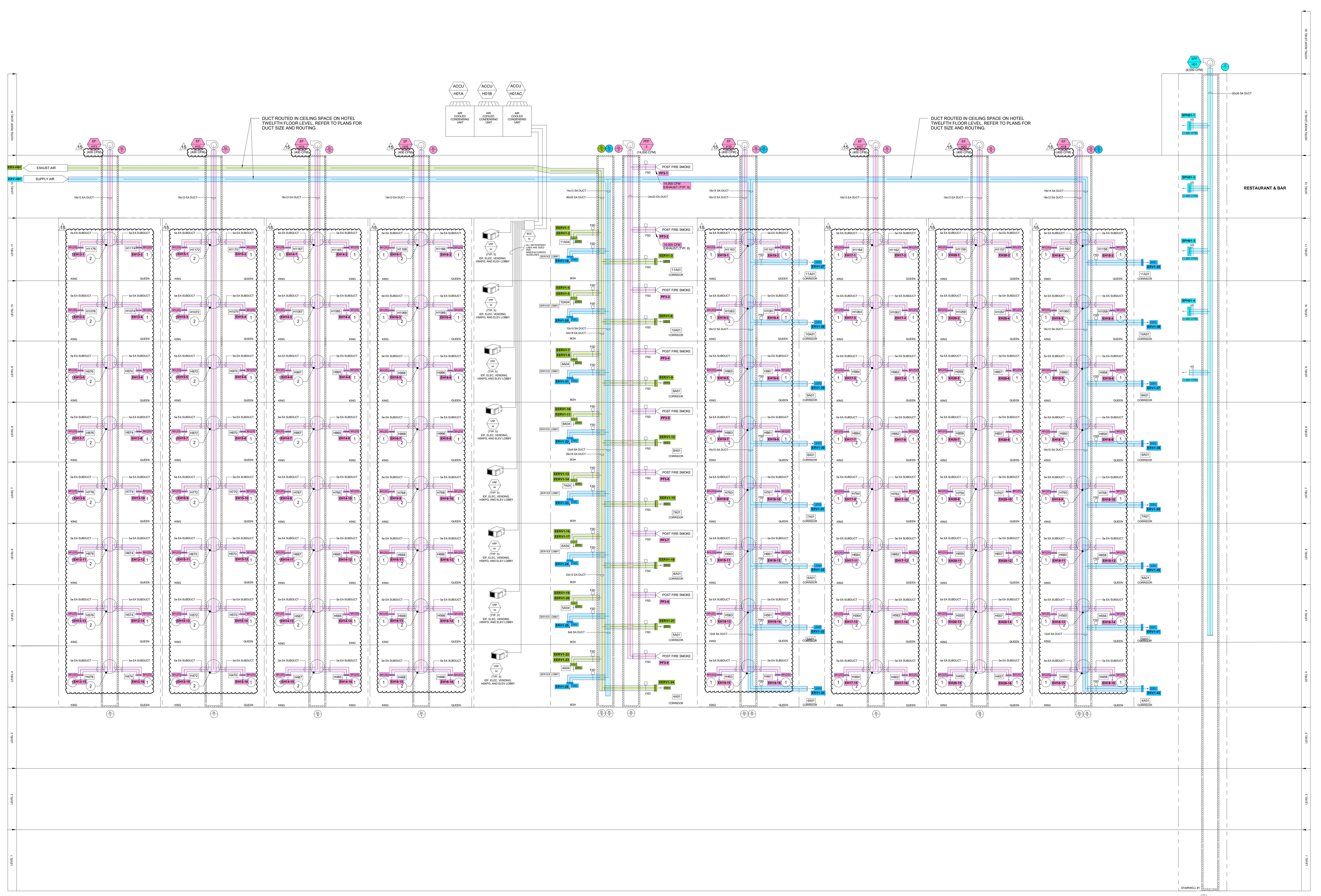
BULLETIN 12  
 06/28/2023



ISSUE 01/31/2023  
 JOB 30611.00  
 DRAWN MWM  
 SCALE NTS  
 REVISIONS  
 10 2023-04-07 BULLETIN 06  
 15 06/28/2023 BULLETIN 12

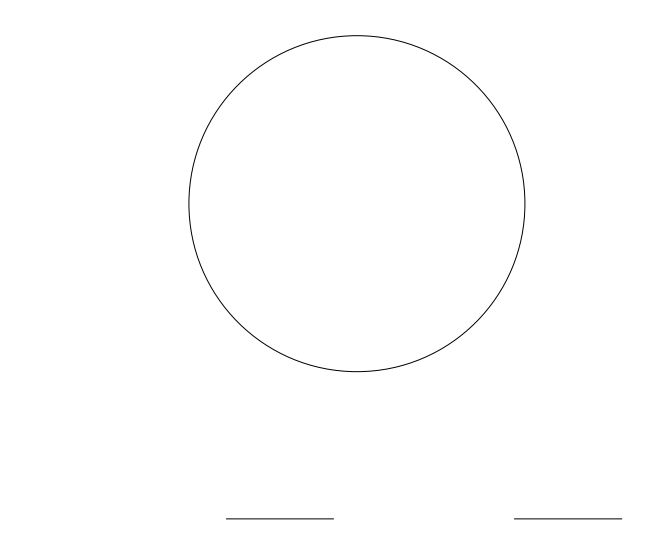
06/27/2023 10:40:27 PM  
 C:\Users\mwm\OneDrive\Documents\Projects\2023\06-28-23\HVAC\BULLETIN 12 - HOTEL RISER DIAGRAM - NORTH.dwg  
 PLOT: 06/28/2023 10:40:27 PM  
 PLOTTER: HP DesignJet T1300e  
 PLOTTING METHOD: PLOT  
 PLOT SCALE: 1.0000  
 PLOT SHEET: 1 OF 1  
 PLOT STATUS: SUCCESS  
 PLOTTER DRIVER: HP DesignJet T1300e  
 PLOTTER MODEL: HP DesignJet T1300e  
 PLOTTER SERIAL: HP DesignJet T1300e  
 PLOTTER FIRMWARE: HP DesignJet T1300e  
 PLOTTER LANGUAGE: HP DesignJet T1300e  
 PLOTTER STATUS: HP DesignJet T1300e  
 PLOTTER ERROR: HP DesignJet T1300e  
 PLOTTER MESSAGE: HP DesignJet T1300e  
 PLOTTER MESSAGE2: HP DesignJet T1300e  
 PLOTTER MESSAGE3: HP DesignJet T1300e  
 PLOTTER MESSAGE4: HP DesignJet T1300e  
 PLOTTER MESSAGE5: HP DesignJet T1300e  
 PLOTTER MESSAGE6: HP DesignJet T1300e  
 PLOTTER MESSAGE7: HP DesignJet T1300e  
 PLOTTER MESSAGE8: HP DesignJet T1300e  
 PLOTTER MESSAGE9: HP DesignJet T1300e  
 PLOTTER MESSAGE10: HP DesignJet T1300e  
 PLOTTER MESSAGE11: HP DesignJet T1300e  
 PLOTTER MESSAGE12: HP DesignJet T1300e  
 PLOTTER MESSAGE13: HP DesignJet T1300e  
 PLOTTER MESSAGE14: HP DesignJet T1300e  
 PLOTTER MESSAGE15: HP DesignJet T1300e  
 PLOTTER MESSAGE16: HP DesignJet T1300e  
 PLOTTER MESSAGE17: HP DesignJet T1300e  
 PLOTTER MESSAGE18: HP DesignJet T1300e  
 PLOTTER MESSAGE19: HP DesignJet T1300e  
 PLOTTER MESSAGE20: HP DesignJet T1300e  
 PLOTTER MESSAGE21: HP DesignJet T1300e  
 PLOTTER MESSAGE22: HP DesignJet T1300e  
 PLOTTER MESSAGE23: HP DesignJet T1300e  
 PLOTTER MESSAGE24: HP DesignJet T1300e  
 PLOTTER MESSAGE25: HP DesignJet T1300e  
 PLOTTER MESSAGE26: HP DesignJet T1300e  
 PLOTTER MESSAGE27: HP DesignJet T1300e  
 PLOTTER MESSAGE28: HP DesignJet T1300e  
 PLOTTER MESSAGE29: HP DesignJet T1300e  
 PLOTTER MESSAGE30: HP DesignJet T1300e  
 PLOTTER MESSAGE31: HP DesignJet T1300e  
 PLOTTER MESSAGE32: HP DesignJet T1300e  
 PLOTTER MESSAGE33: HP DesignJet T1300e  
 PLOTTER MESSAGE34: HP DesignJet T1300e  
 PLOTTER MESSAGE35: HP DesignJet T1300e  
 PLOTTER MESSAGE36: HP DesignJet T1300e  
 PLOTTER MESSAGE37: HP DesignJet T1300e  
 PLOTTER MESSAGE38: HP DesignJet T1300e  
 PLOTTER MESSAGE39: HP DesignJet T1300e  
 PLOTTER MESSAGE40: HP DesignJet T1300e  
 PLOTTER MESSAGE41: HP DesignJet T1300e  
 PLOTTER MESSAGE42: HP DesignJet T1300e  
 PLOTTER MESSAGE43: HP DesignJet T1300e  
 PLOTTER MESSAGE44: HP DesignJet T1300e  
 PLOTTER MESSAGE45: HP DesignJet T1300e  
 PLOTTER MESSAGE46: HP DesignJet T1300e  
 PLOTTER MESSAGE47: HP DesignJet T1300e  
 PLOTTER MESSAGE48: HP DesignJet T1300e  
 PLOTTER MESSAGE49: HP DesignJet T1300e  
 PLOTTER MESSAGE50: HP DesignJet T1300e  
 PLOTTER MESSAGE51: HP DesignJet T1300e  
 PLOTTER MESSAGE52: HP DesignJet T1300e  
 PLOTTER MESSAGE53: HP DesignJet T1300e  
 PLOTTER MESSAGE54: HP DesignJet T1300e  
 PLOTTER MESSAGE55: HP DesignJet T1300e  
 PLOTTER MESSAGE56: HP DesignJet T1300e  
 PLOTTER MESSAGE57: HP DesignJet T1300e  
 PLOTTER MESSAGE58: HP DesignJet T1300e  
 PLOTTER MESSAGE59: HP DesignJet T1300e  
 PLOTTER MESSAGE60: HP DesignJet T1300e  
 PLOTTER MESSAGE61: HP DesignJet T1300e  
 PLOTTER MESSAGE62: HP DesignJet T1300e  
 PLOTTER MESSAGE63: HP DesignJet T1300e  
 PLOTTER MESSAGE64: HP DesignJet T1300e  
 PLOTTER MESSAGE65: HP DesignJet T1300e  
 PLOTTER MESSAGE66: HP DesignJet T1300e  
 PLOTTER MESSAGE67: HP DesignJet T1300e  
 PLOTTER MESSAGE68: HP DesignJet T1300e  
 PLOTTER MESSAGE69: HP DesignJet T1300e  
 PLOTTER MESSAGE70: HP DesignJet T1300e  
 PLOTTER MESSAGE71: HP DesignJet T1300e  
 PLOTTER MESSAGE72: HP DesignJet T1300e  
 PLOTTER MESSAGE73: HP DesignJet T1300e  
 PLOTTER MESSAGE74: HP DesignJet T1300e  
 PLOTTER MESSAGE75: HP DesignJet T1300e  
 PLOTTER MESSAGE76: HP DesignJet T1300e  
 PLOTTER MESSAGE77: HP DesignJet T1300e  
 PLOTTER MESSAGE78: HP DesignJet T1300e  
 PLOTTER MESSAGE79: HP DesignJet T1300e  
 PLOTTER MESSAGE80: HP DesignJet T1300e  
 PLOTTER MESSAGE81: HP DesignJet T1300e  
 PLOTTER MESSAGE82: HP DesignJet T1300e  
 PLOTTER MESSAGE83: HP DesignJet T1300e  
 PLOTTER MESSAGE84: HP DesignJet T1300e  
 PLOTTER MESSAGE85: HP DesignJet T1300e  
 PLOTTER MESSAGE86: HP DesignJet T1300e  
 PLOTTER MESSAGE87: HP DesignJet T1300e  
 PLOTTER MESSAGE88: HP DesignJet T1300e  
 PLOTTER MESSAGE89: HP DesignJet T1300e  
 PLOTTER MESSAGE90: HP DesignJet T1300e  
 PLOTTER MESSAGE91: HP DesignJet T1300e  
 PLOTTER MESSAGE92: HP DesignJet T1300e  
 PLOTTER MESSAGE93: HP DesignJet T1300e  
 PLOTTER MESSAGE94: HP DesignJet T1300e  
 PLOTTER MESSAGE95: HP DesignJet T1300e  
 PLOTTER MESSAGE96: HP DesignJet T1300e  
 PLOTTER MESSAGE97: HP DesignJet T1300e  
 PLOTTER MESSAGE98: HP DesignJet T1300e  
 PLOTTER MESSAGE99: HP DesignJet T1300e  
 PLOTTER MESSAGE100: HP DesignJet T1300e

- KEY NOTES:**
- 1 EACH GUESTROOM EXHAUST GRILLE TO BE AMERICAN ALDES SELF-BALANCING EXHAUST/SUPPLY GRILLE OR APPROVED EQUAL.
  - 2 EACH GUESTROOM EXHAUST TO CONNECT TO SHAFT UTILIZING A 2" SUBJECT EQUAL TO EXHAUST SIZE.



1 HOTEL RISER DIAGRAM - SOUTH

BULLETIN 12  
 06/28/2023



ISSUE	01/31/2023
JOB	30611.00
DRAWN	MWM
SCALE	NTS
REVISIONS	
10	2023-04-07 BULLETIN 06
15	06/28/2023 BULLETIN 12

HVAC RISER DIAGRAM

M-701





**Additions and Renovations to Harrah's Cherokee Valley River**  
 777 Casino Parkway  
 Murphy, NC 28906

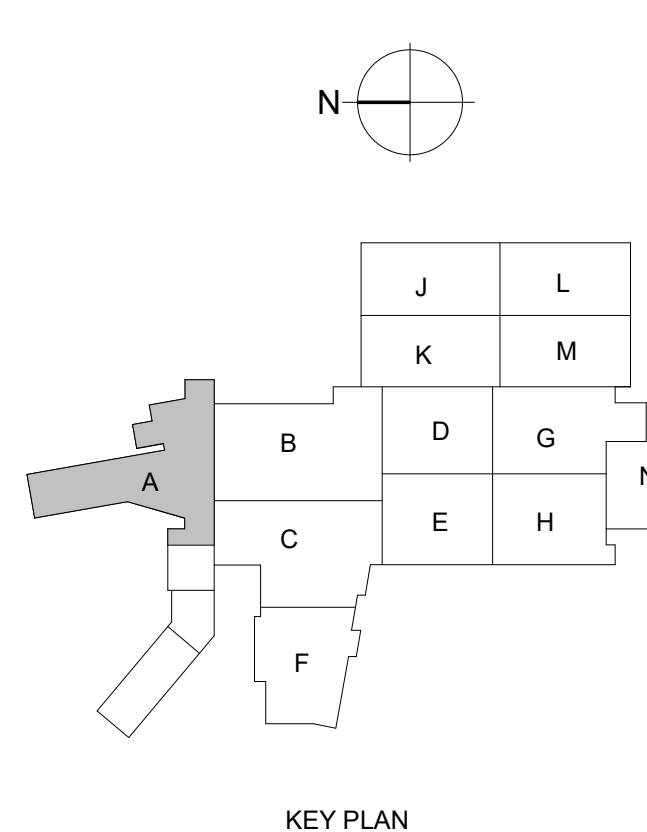
**JCJ ARCHITECTURE**  
 120 HUYSHOPE AVENUE  
 SUITE 400  
 HARTFORD, CT 06106  
 860.247.9226

© 2022 JCJ Architecture  
 CONSULTANT:  
**VANDERWEIL**  
 P.C. Vanderweil Engineers, LLP  
 274 Summer Street  
 Boston, MA 02108  
 617.433.7401 FAX  
 617.433.7401  
 vanderweil.com

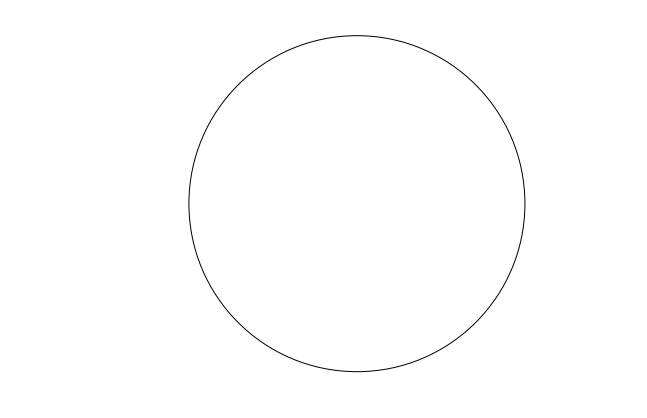
- GENERAL NOTES:**
- A. SEE CALLOUTS ON 4TH LEVEL PLAN FOR REFERENCE TO ENLARGED GUESTROOM PLANS.
  - B. SEE PIPING PLANS FOR CONDENSATE AND VRF PIPING.
- KEYNOTES:**
- 1. INSTALL ALL MECHANICAL EQUIPMENT AND DUCTWORK IN THIS ROOM TIGHT TO DECK ABOVE.



1. HVAC DUCTWORK - SIXTH FLOOR LEVEL  
 1/8" = 1'-0"



BULLETIN 24  
 02/09/2024



PIC [PS]	DL [CF]
PM [SP]	DTL [KB]
ISSUE	01/31/2023
JOB	30611.00
DRAWN	MWM
SCALE	As indicated
REVISIONS	
10	2023-04-07 BULLETIN 06
19	2023-09-13 BULLETIN 15
27	2024-02-09 BULLETIN 24

HVAC DUCTWORK - SIXTH FLOOR LEVEL

MH-116

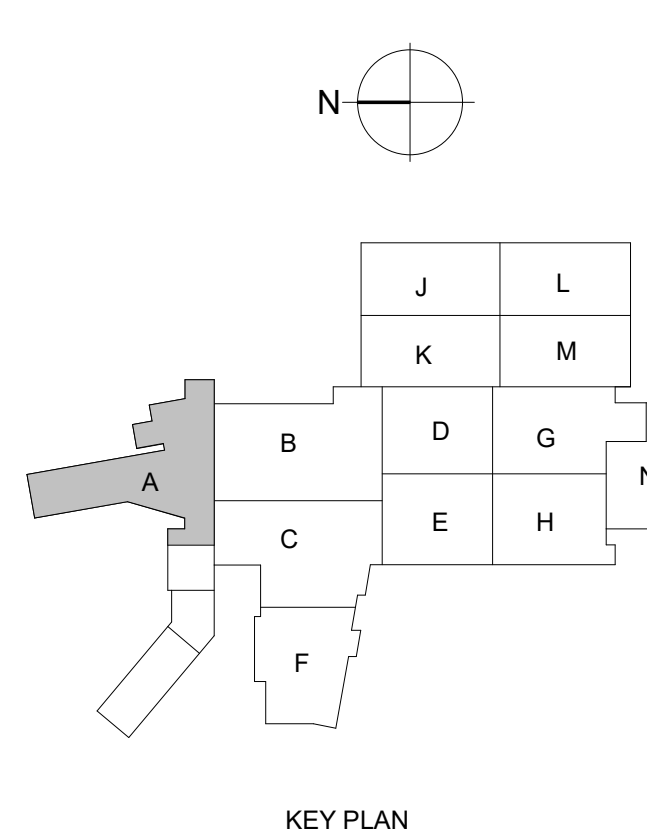
20240204 4:15:50 PM



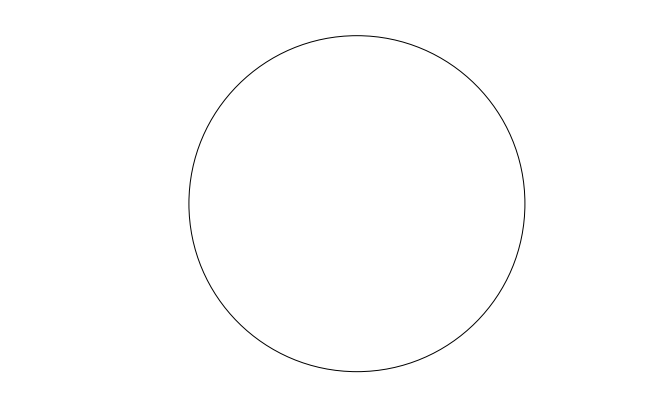
- GENERAL NOTES:**
- SEE CALLOUTS ON 4TH LEVEL PLAN FOR REFERENCE TO ENLARGED GUESTROOM PLANS.
  - SEE PIPING PLANS FOR CONDENSATE AND VRF PIPING.
- KEYNOTES:**
- INSTALL ALL MECHANICAL EQUIPMENT AND DUCTWORK IN THIS ROOM TIGHT TO DECK ABOVE.
  - INSTALL HEATER IN STAIRWELL 80" AFF.



1 HVAC DUCTWORK - EIGHTH FLOOR LEVEL  
 1/8" = 1'-0"



BULLETIN 24  
 02/09/2024



ISSUE	01/31/2023
JOB	30611.00
DRAWN	MWM
SCALE	As indicated
REVISIONS	
10	2023-0427 BULLETIN 06
19	2023-0913 BULLETIN 15
27	2024-0209 BULLETIN 24

20220204 4 10:50 PM





