

Additions and Renovations to Harrah's Cherokee Valley River
 777 Casino Parkway
 Murphy, NC 28906

JCJ ARCHITECTURE

120 HUYSHOPE AVENUE
 SUITE 400
 HARTFORD, CT 06106
 860.247.9226

© 2022 JCJ Architecture

CONSULTANT:

VANDERWEIL
 B.C. Vanderweil Engineers, LLP
 274 Summer Street
 Boston, MA 02219
 617.433.2423 TEL
 617.433.2401 FAX
 vanderweil.com

- GENERAL NOTES:**
- A. SEE PIPING PLANS FOR CONDENSATE AND VRF PIPING.
- KEYNOTES:**
1. EACH DRYER IS PROVIDED WITH INDIVIDUAL 4" VENT DUCT CONNECTED TO 12" VENT HEADER WITH SECONDARY LINT TRAP (EQUAL TO TJERNLUND MODEL L74) MOUNTED AT 5' 0" ABOVE FINISH FLOOR TO CENTER OF LINT TRAP SUCH THAT IT IS VISIBLE ABOVE DRYER.
 2. FAN TO BE INSTALLED ON SUSPENDED PLATFORM FROM STRUCTURE ABOVE PER MANUFACTURER'S INSTRUCTIONS. FINAL LOCATION OF FAN TO BE COORDINATED WITH STORAGE RACKS TO ENSURE NO OBSTRUCTIONS TO THE FAN OR THE STORAGE RACKS.
 3. PROVIDE COMBINATION FIRE-SMOKE DAMPER RATED FOR MINIMUM 3 HR RATED WALL.
 4. OPEN ENDED DUCT WITH ALUMINUM WIRE MESH SCREEN.
 5. PROVIDE 12" HOOD WITH FLAPPER (EQUAL TO TJERNLUND MODEL P.N. DEVH2) AND INSTALL PER MANUFACTURER'S INSTRUCTION. HOOD MUST BE MINIMUM 5' 0" FROM DOORS.
 6. POOL EXHAUST DUCTWORK AND BALANCING DAMPERS SHALL BE OF ALUMINUM CONSTRUCTION.
 7. PROVIDE MODULATING PRESSURE CONTROLLER (EQUAL TO TJERNLUND MPC) AND VARIABLE FREQUENCY DRIVE (EQUAL TO TJERNLUND VFD-HP60MPC). COORDINATE LOCATION PRIOR TO INSTALLING PER MANUFACTURER'S INSTRUCTIONS. REFER TO HVAC CONTROLS ON DRAWING M813.
 8. PROVIDE COMBINATION FIRE-SMOKE DAMPER RATED FOR 3 HR FIRE BARRIER.
 9. OMNI TEMP REFRIGERATION RACK PROVIDED BY OTHERS. COORDINATE WITH ALL TRADES PRIOR TO FINALIZING LOCATION INCLUDING PLUMBING OVERFLOW DRAIN OUTLET, CLEARANCES, AND ACCESSIBILITY TO THE EQUIPMENT.
 10. ONE (1) EXTERIOR LOUVER DOOR FOR AIR INTAKE. PROVIDE MINIMUM 0.75 SF OF FREE AREA TO PROVIDE 365 CFM OF AIR INTAKE. REFER TO ARCHITECTURAL PLANS FOR DETAILS.
 11. ONE (1) EXTERIOR LOUVER DOOR FOR AIR INTAKE. PROVIDE MINIMUM 0.4 SF OF FREE AREA TO PROVIDE 155 CFM OF AIR INTAKE. REFER TO ARCHITECTURAL PLANS FOR DETAILS.
 12. CLEAN EXISTING DIFFUSER AND REINSTALL IN CEILING ALIGNED WITH NEW GRID. ADJUST EXISTING DUCTWORK AS REQUIRED TO INSTALL IN NEW CEILING. TYPICAL.
 13. ROUTE FLUE VENT FROM POOL HEATER TO EXTERIOR WALL AS SHOWN. TERMINATE WITH SIDEWALL VENT TERMINATION PROVIDED WITH HEATER AS PART OF POWER SIDEWALL VENT KIT. VENT SHALL BE CONSTRUCTED OF DOUBLE WALL AL29-FC.
 14. ROUTE COMBUSTION AIR DUCT FROM POOL HEATER TO EXTERIOR WALL AS SHOWN. TERMINATE WITH AIR INLET CAP PROVIDED WITH HEATER AS PART OF POWER SIDEWALL VENT KIT. COMBUSTION AIR DUCT SHALL BE CONSTRUCTED OF TYPE B DOUBLE WALL.
 15. GAS-FIRED POOL HEATER. SEE AQUATIC DRAWINGS FOR SPECIFICATION AND LOCATION.
 16. TWO (2) EXTERIOR LOUVER DOOR (ONE (1) PER EACH DOOR) FOR AIR INTAKE. PROVIDE MINIMUM 0.75 SF OF FREE AREA TO PROVIDE 370 CFM OF AIR INTAKE PER EACH LOUVER. REFER TO ARCHITECTURAL PLANS FOR DETAILS.
 17. PROVIDE FIRE WRAP FOR DRYER VENT EXHAUST STARTING AT WHERE DUCT LEAVES FIRE RATED DRYER ROOM ALL THE WAY TO EXTERIOR TERMINATION.
 18. INSTALL HEATER IN STAIRWELL 80' AFF.



Additions and Renovations to Harrah's Cherokee Valley River
 777 Casino Parkway
 Murphy, NC 28906

JCJ ARCHITECTURE
 120 HUYSHOPE AVENUE
 SUITE 400
 HARTFORD, CT 06106
 860.247.9226

© 2022 JCJ Architecture

CONSULTANT:
VANDERWEIL
 B.C. Vanderweil Engineers, LLP
 274 Summer Street
 Boston, MA 02110
 617.433.2433 TEL
 617.433.2401 FAX
 vanderweil.com

GENERAL NOTES:

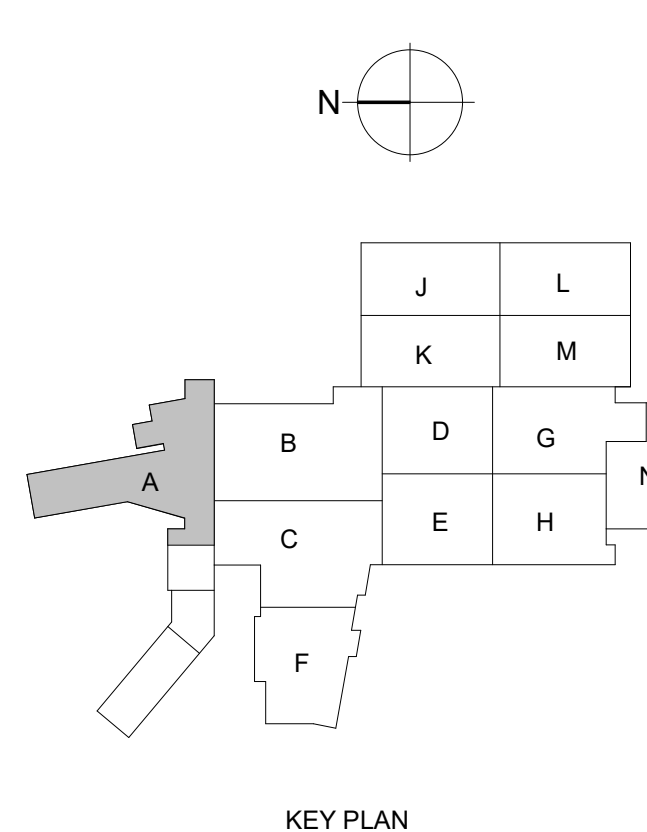
A SEE PIPING PLANS FOR CONDENSATE AND VRF PIPING.

KEYNOTES:

- EXPOSED DUCTWORK IN POOL SHALL BE CONSTRUCTED OF ALUMINUM DOUBLE WALL OVAL. CENTER OF DUCT TO BE MOUNTED AT 2'-4" ABOVE POOL DECK. COORDINATE WITH ARCHITECT PRIOR TO FINAL ROUTING OF DUCTWORK AND MOUNTING DIFFUSERS.
- INSTALL HEAVY DUTY ALUMINUM RETURN GRILLE (RG) AT 23'-0" ABOVE FINISHED FLOOR TO CENTER OF DIFFUSER.
- PROVIDE 8" O.D. WITH MANUAL DAMPER (105 CFM) AND CONNECT TO VRF-S11. VRF-S11 IS LOCATED BELOW GA DUCT SHOWN.
- IN-LINE FANS INSTALLED ABOVE CEILING SHALL BE ACCESSED AND MAINTAINED VIA REMOVABLE CEILING TILE. COORDINATE FAN / MOTOR ARRANGEMENT, ROTATION, DISCHARGE POSITION AND MEETING MANUFACTURER REQUIREMENTS FOR SERVICE CLEARANCE PRIOR TO INSTALLING.
- PARALLEL LINEAR METAL CEILING DIFFUSER SHOWN. PROVIDED BY ARCHITECTURE METAL CEILING MANUFACTURER. COORDINATE FINAL LOCATION WITH ARCHITECT.
- PROVIDE PARALLEL METAL CEILING ACCESS PANEL. COORDINATE FINAL SIZE AND LOCATION WITH ARCHITECT. ACCESS SIZE SHALL BE BIGGER THAN THE EQUIPMENT TO ALLOW FOR REMOVAL OF EQUIPMENT AND MAINTENANCE.
- INSTALL ALUMINUM SUPPLY SPIRAL DUCT GRILLE AT BOTTOM CENTER FLAT PORTION OF DOUBLE WALL OVAL DUCT WITH 22' DEFLECTION BLOWING IN DIRECTION AGAINST PERIMETER EXTERIOR OR INTERIOR WALL.
- PRIOR TO INSTALL ALL EQUIPMENT ON ROOF. COORDINATE WITH ALL EQUIPMENT MANUFACTURE TO VERIFY ACCESS MAINTENANCE AND CLEARANCE REQUIREMENTS PRIOR TO INSTALLING.
- REVISE 9: 36"x22" SUPPLY AND EXHAUST AIR DUCT DOWN TO SECOND FLOOR.**
- REFER TO DRAWING MB13 FOR POOL DEHUMIDIFICATION AIR HANDLING UNIT CONTROLS.
- 11: COVER OPENED DUCT WITH WIRE MESH SCREEN.**
- CONCEALED RETURN DUCT SERVING POOL SHALL BE CONSTRUCTED OF ALUMINUM RECTANGLE DUCT WITH INSULATION.
- PROVIDE 3'-0" x 4'-0" ACCESS PANEL FOR BC-H06A AND VRF-H38. REFER TO ARCHITECTURAL PLAN FOR EXACT LOCATION.
- PROVIDE 2'-0" x 4'-0" ACCESS PANEL FOR BC-H06B. REFER TO ARCHITECTURAL PLAN FOR EXACT LOCATION.
- PROVIDE FIELD APPLIED METAL JACKETING FOR ALL EXPOSED DUCTWORK OUTSIDE ON THE ROOF. REFER TO SPECIFICATIONS FOR MORE INFORMATION.
- PROVIDE ALUMINUM EXHAUST LOUVER WITH 1.0 SQ FT MINIMUM FREE AREA. SEE ARCHITECTURE PLANS FOR LOCATION AND SPECIFICATIONS. REFER TO PLENUM CONNECTION DETAIL FOR MORE INFORMATION.
- CONNECT 5" Ø SUPPLY/EXHAUST DUCT TO SUANA. **BALANCE SUPPLY AND EXHAUST AIRFLOW TO 35 CFM EACH**. REFER TO SPA DRAWINGS FOR MORE INFORMATION.
- PROVIDE 8" Ø OA WITH MANUAL DAMPER (60 CFM) AND CONNECT TO RETURN DUCT AS SHOWN. VRF IS LOCATED BELOW STACKED DUCTWORK.
- PROVIDE 8" Ø OA WITH MANUAL DAMPER (70 CFM) AND CONNECT TO RETURN DUCT AS SHOWN. VRF IS LOCATED BELOW STACKED DUCTWORK.
- PROVIDE REMOTE MANUAL VOLUME DAMPER.
- CONNECT 5" Ø SUPPLY/EXHAUST DUCT TO STEAM. **BALANCE SUPPLY AIRFLOW TO 50 CFM AND EXHAUST AIRFLOW TO 60 CFM**. REFER TO SPA DRAWINGS FOR MORE INFORMATION.
- ROUTE 16"x4" EXHAUST DUCT DOWN IN WALL CAVITY TO ARCHITECTURAL OPENING IN BACK OF AV CABINET NEAR THE FLOOR. PROVIDE A **BALANCING DAMPER TO 150 CFM**.
- EXHAUST AIR TO DISCHARGE IN PLENUM SPACE. PROVIDE WIRE MESH SCREEN AT END OF DUCT OPENING.
- INSTALL HEATER IN STARWELL 80' AFF.
- SMOKE DETECTOR WIRED TO SHUT DOWN VRF INDOOR UNIT UPON DETECTION OF SMOKE. SMOKE DETECTOR PROVIDED BY FIRE ALARM. SEE FIRE ALARM DRAWINGS FOR EXACT LOCATION.



1 HVAC DUCTWORK - THIRD FLOOR LEVEL - AREA A
 1/8" = 1'-0"



KEY PLAN
BULLETIN 24
 02/09/2024

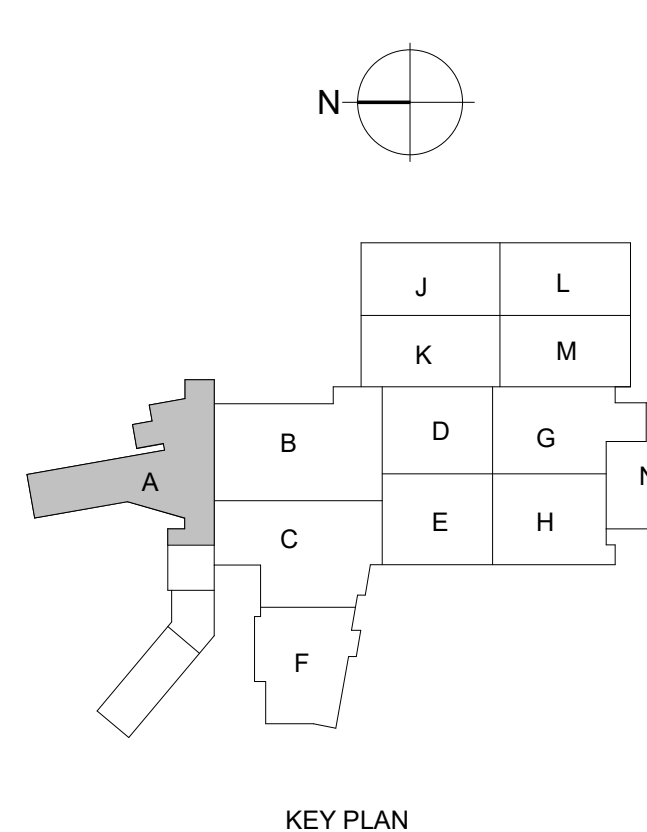
| | |
|-----------|--------------|
| PIC (PS) | DL (CF) |
| PM (SP) | DTL (KB) |
| ISSUE | 01/31/2023 |
| JOB | 30611.00 |
| DRAWN | MWM |
| SCALE | As indicated |
| REVISIONS | |

- 5 2023-0214 BULLETIN 01
- 6 2023-0315 BULLETIN 02
- 10 2023-0427 BULLETIN 06
- 11 2023-0512 BULLETIN 08
- 21 2023-0920 BULLETIN 17
- 26 2024-0125 BULLETIN 22
- 27 2024-0209 BULLETIN 24

HVAC DUCTWORK - THIRD FLOOR LEVEL - AREA A

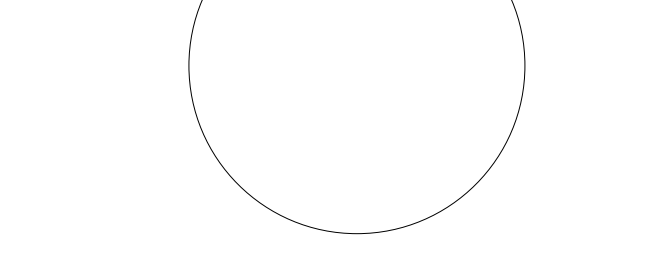
MH-113A

- GENERAL NOTES:**
- A. SEE PIPING PLANS FOR CONDENSATE AND VRF PIPING.
- KEYNOTES:**
1. ROUTE 6" FLUE VENT FROM WATER HEATER CONNECTION UP THRU ROOF ABOVE. FLUE VENT SHALL BE CONSTRUCTED OF SCHEDULE 40 SOLID PVC PIPE. INSTALL VENT PER MANUFACTURER INSTRUCTIONS. ANY HORIZONTAL RUNS SHALL SLOPE BACK TOWARDS WATER HEATER AT A MINIMUM OF 1/4" PER LINEAR FOOT.
 2. ROUTE 6" COMBUSTION AIR VENT FROM WATER HEATER CONNECTION TO EXTERIOR WALL AS SHOWN. PROVIDE ANGLED WALL CAP WITH WIRE MESH SCREEN AT VENT TERMINATION. MAINTAIN A MINIMUM OF 1" BETWEEN EACH TERMINATION. INSTALL VENT PER MANUFACTURER INSTRUCTIONS.
 3. GAS-FIRED WATER HEATER. SEE PLUMBING DRAWINGS FOR MORE INFORMATION. TYPICAL.
 4. PROVIDE GEAR TYPE VOLUME DAMPER WITH MEMORY STOPS, YOUNG REGULATOR OR EQUAL. THIS IS TYPICAL FOR ALL STAIR PRESSURIZATION VOLUME DAMPERS.
 5. PROVIDE 2-HR FIRE WRAP FROM THE SHAFT PENETRATION TO ROOF PENETRATION.
 6. 30"x20" EA UP TO KEF-R01 ON ROOF ABOVE. TRANSITION DUCT TO MATCH FAN CONNECTION SIZE.
 7. 12"x12" EA UP TO KEF-R02 ON ROOF ABOVE. TRANSITION DUCT TO MATCH FAN CONNECTION SIZE.
 8. 20"x20" EA UP TO KEF-R03 ON ROOF ABOVE. TRANSITION DUCT TO MATCH FAN CONNECTION SIZE.
 9. TYPE 1 KITCHEN HOOD. SEE FOOD SERVICE DRAWINGS FOR HOOD INFORMATION. SIZE AND BALANCE ALL EXHAUST DUCT AND MAKE-UP DUCT CONNECTIONS PER FOOD SERVICE PLANS.
 10. 18"x18" SA DN FROM MAJ-R01 ON ROOF ABOVE.
 11. 28"x20" SA DN FROM MAJ-R01 ON ROOF ABOVE.
 12. PROVIDE SINGLE CONTROLLER EQUAL TO MODEL PASCR165 FOR THE CONTROL OF ALL FOUR PATIO HEATERS.
 13. DISHWASHER EXHAUST DUCT SHALL BE ALUMINUM CONSTRUCTION AND SLOPE TOWARDS DISHWASHER CONNECTIONS. DISHWASHER CONNECTIONS TO WAREHOUSE BY KITCHEN CONSULTANT. SEE FOOD SERVICE PLANS.
 14. SMOKE DETECTOR WIRE TO SHUT DOWN VRF INDOOR UNIT UPON DETECTION OF SMOKE. SMOKE DETECTOR PROVIDED BY FIRE ALARM. SEE FIRE ALARM DRAWINGS FOR EXACT LOCATION.



KEY PLAN

BULLETIN 28
 03/29/2024



| | |
|-----------|-----------------------|
| PIC (PS) | DL (CF) |
| PM (SP) | DTL (KB) |
| ISSUE | 01/31/2023 |
| JOB | 30611.00 |
| DRAWN | MWM |
| SCALE | As indicated |
| REVISIONS | |
| 5 | 2023-0214 BULLETIN 01 |
| 6 | 2023-0315 BULLETIN 02 |
| 10 | 2023-0427 BULLETIN 06 |
| 28 | 2024-0125 BULLETIN 22 |
| 31 | 2024-0229 BULLETIN 28 |

1 HVAC DUCTWORK - TWELFTH FLOOR LEVEL
 1/8" = 1'-0"

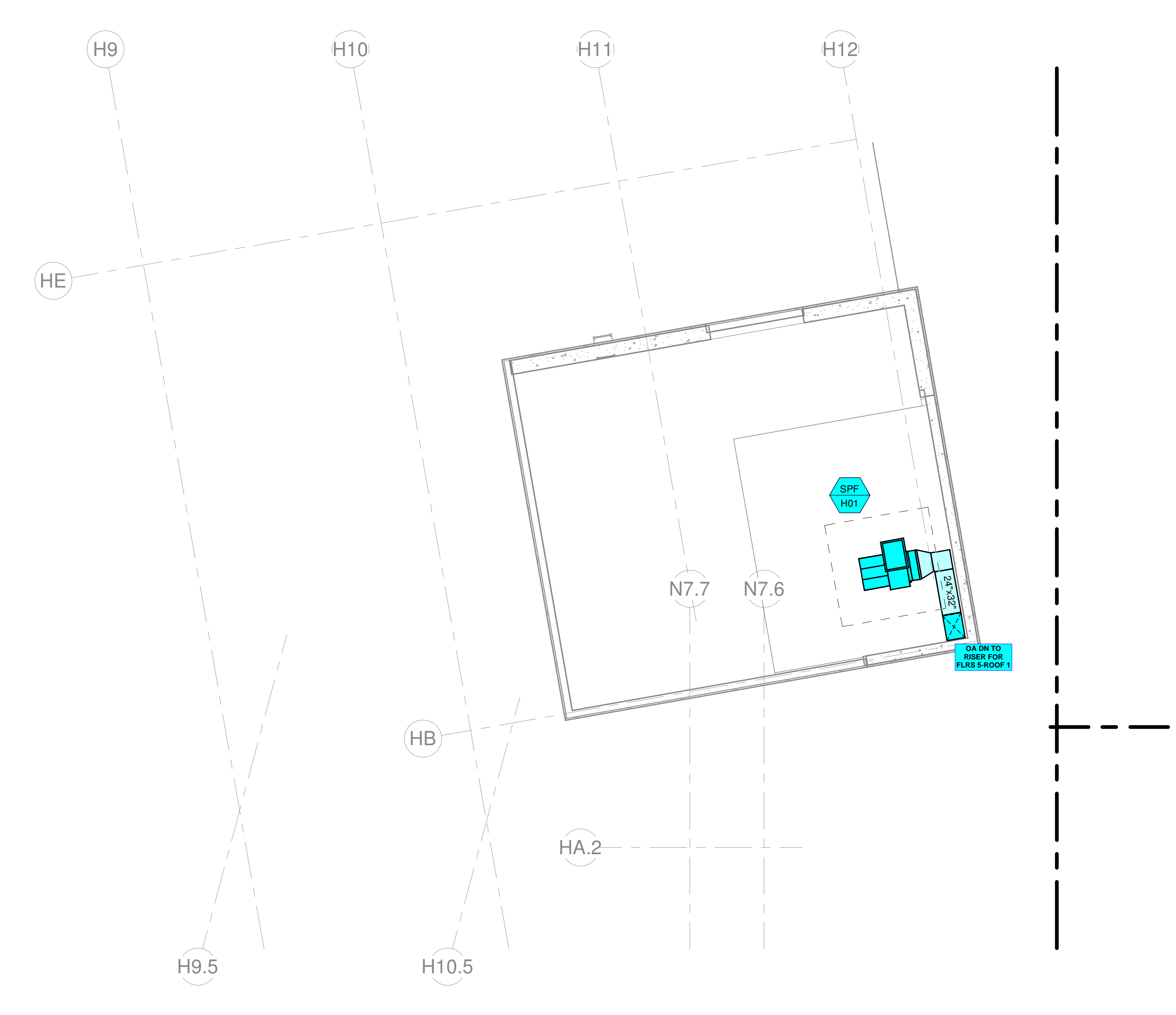
1/20/2023 11:27:07 AM

Additions and Renovations to Harrah's Cherokee Valley River

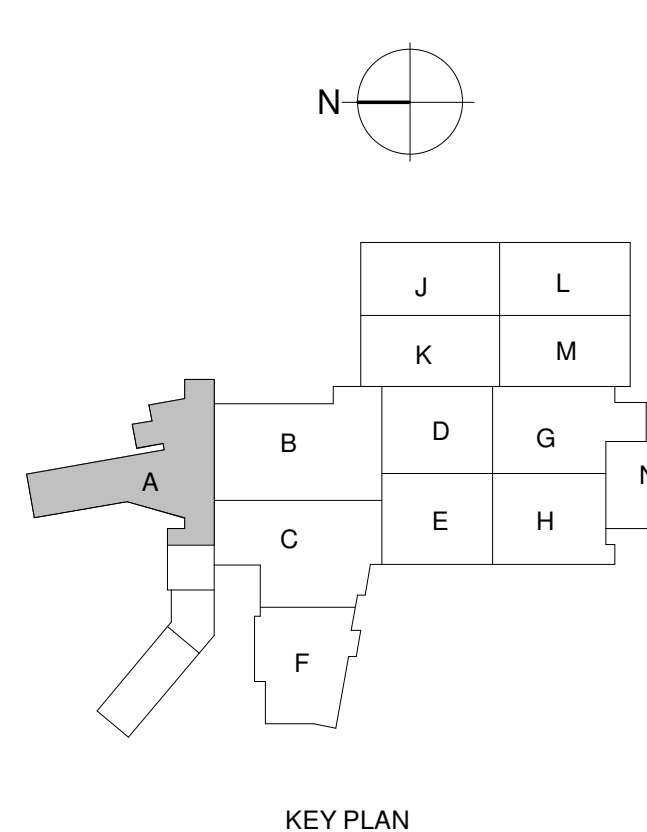
777 Casino Parkway
Murphy, NC 28906

JCJARCHITECTURE
120 HUYSHOPE AVENUE
SUITE 400
HARTFORD, CT 06106
860.247.9226

© 2022 JCJ Architecture
CONSULTANT:
VANDERWEIL
E.C. Vanderweil Engineers, LLP
274 Summer Street
Boston, MA 02210
617.433.7433 FAX
617.433.7401 PAX
vanderweil.com



① HVAC DUCTWORK - HOTEL ROOF LEVEL 02
1/8" = 1'-0"



KEY PLAN
PERMIT SET
01/31/2023



| | |
|-----------|--------------|
| ISSUE | 12/22/2022 |
| JOB | 30611.00 |
| DRAWN | MWM |
| SCALE | 1/8" = 1'-0" |
| REVISIONS | |

HVAC DUCTWORK - HOTEL ROOF LEVEL 02

MH-124