

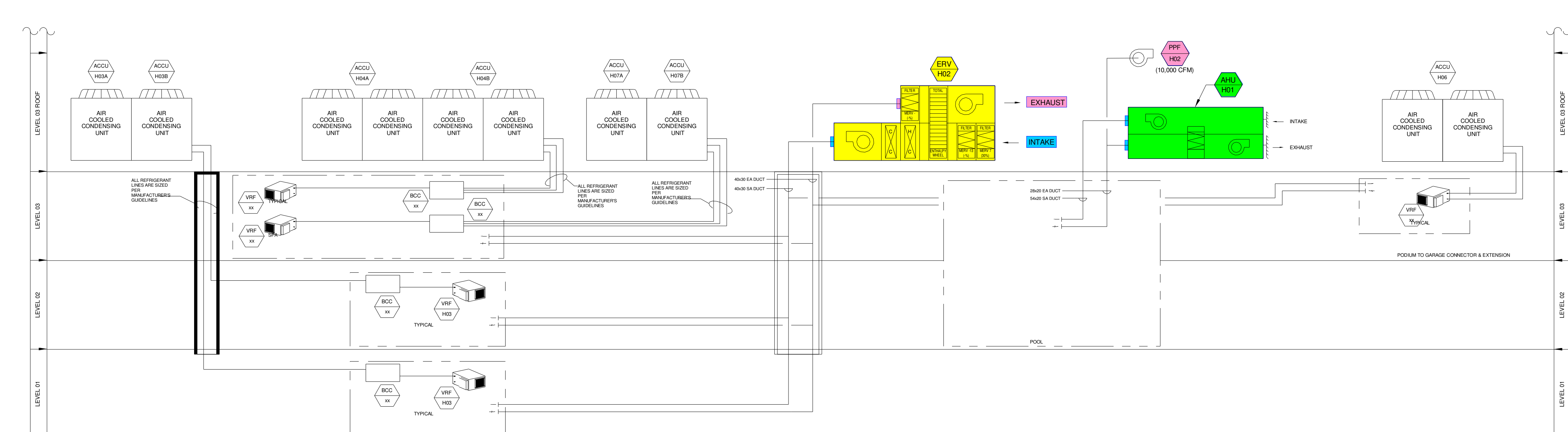
DATE PLOTTED: 1/21/23 10:58 AM | DRAWN: MWM | ALL RIGHTS RESERVED | THIS DRAWING IS THE PROPERTY OF JCY ARCHITECTURE, INC. AND IS NOT TO BE REPRODUCED OR TRANSMITTED IN ANY FORM OR BY ANY MEANS, ELECTRONIC OR MECHANICAL, INCLUDING PHOTOCOPYING, RECORDING, OR BY ANY INFORMATION STORAGE AND RETRIEVAL SYSTEM, WITHOUT THE WRITTEN PERMISSION OF JCY ARCHITECTURE, INC. | THIS DOCUMENT IS FOR INFORMATION ONLY AND DOES NOT CONSTITUTE A CONTRACT. | CONSULTANT: VANDERWEIL ENGINEERS, LLP

Additions and Renovations to Harrah's Cherokee Valley River

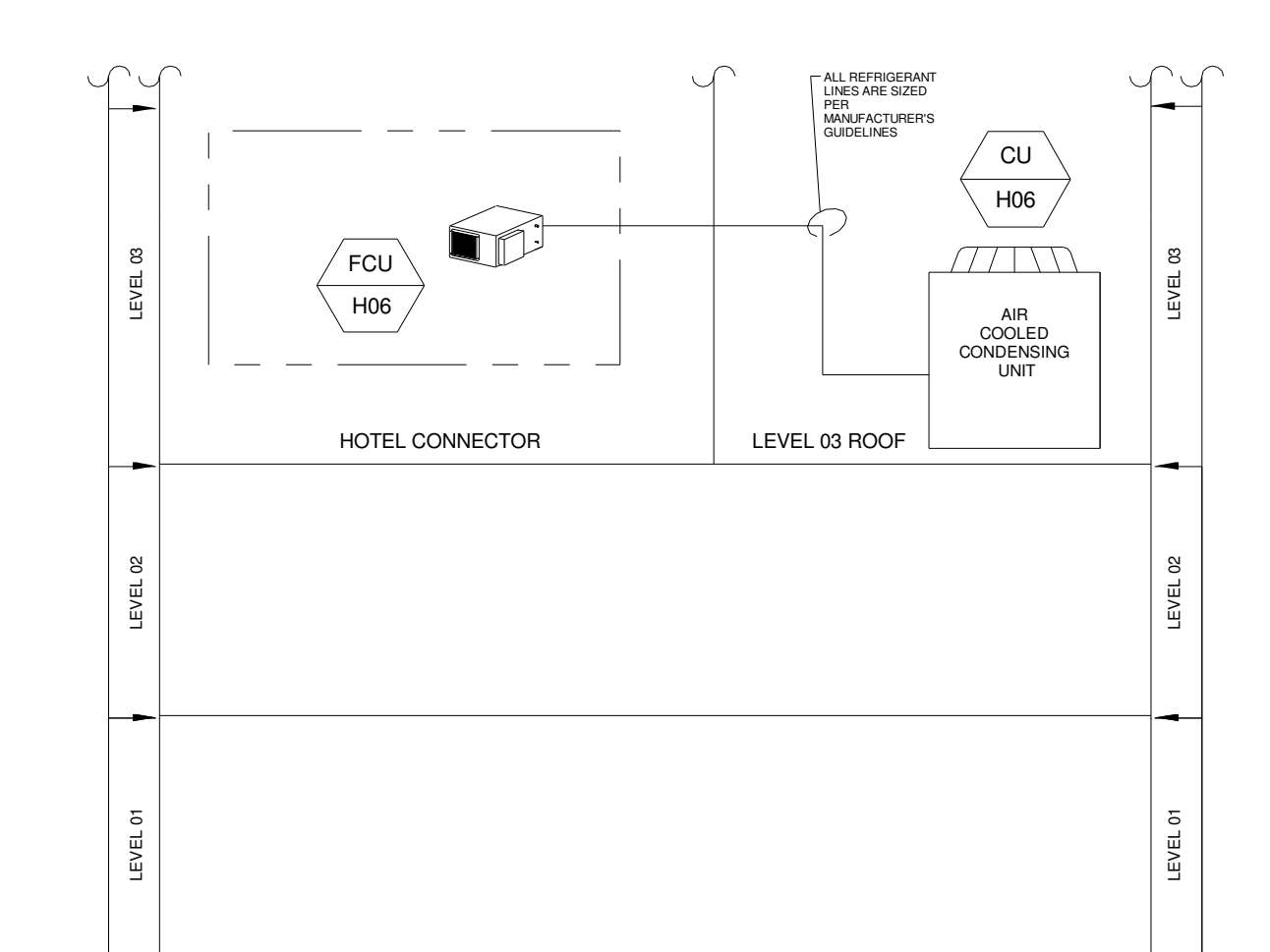
777 Casino Parkway
Murphy, NC 28906

JCY ARCHITECTURE
120 HUYSHOPE AVENUE
SUITE 400
HARTFORD, CT 06106
860.247.9226

© 2022 JCY Architecture
CONSULTANT:
VANDERWEIL
E.C. Vanderweil Engineers, LLP | 417.433.7433 FAX
274 Summer Street | 417.433.7401 FAX
Boston, MA 02219 | vanderweil.com



2 PODIUM RISER DIAGRAM - LEVEL 1 TO 3



1 HOTEL RISER DIAGRAM - CONNECTOR

PERMIT SET
01/31/2023



ISSUE	12/22/2022
JOB	30611.00
DRAWN	MWM
SCALE	NTS
REVISIONS	

HVAC RISER DIAGRAM

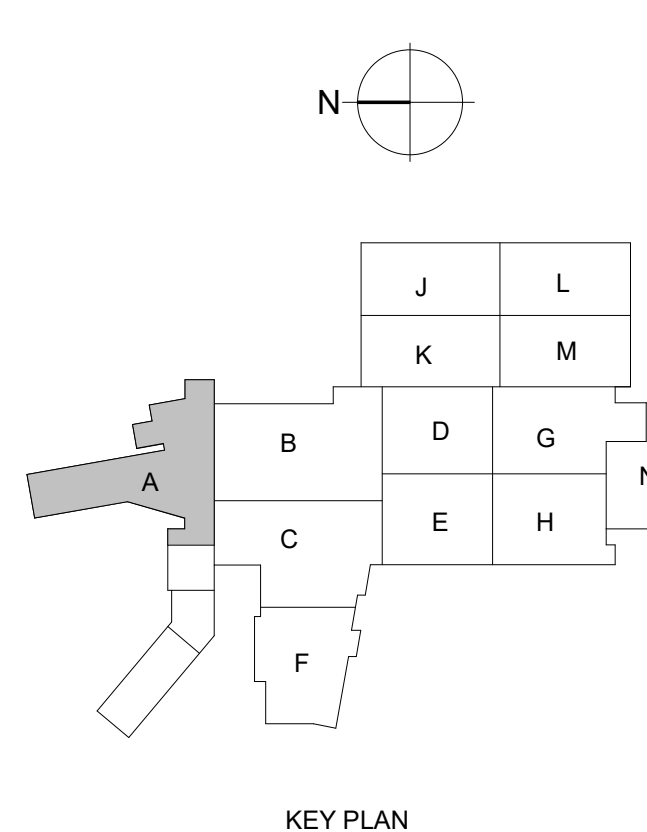
M-702

GENERAL NOTES:

A SEE PIPING PLANS FOR CONDENSATE AND VRF PIPING.

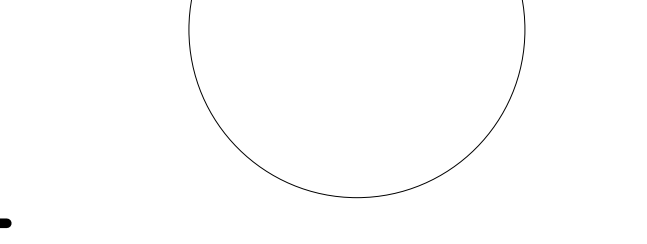
KEYNOTES:

- EXPOSED DUCTWORK IN POOL SHALL BE CONSTRUCTED OF ALUMINUM DOUBLE WALL OVAL. CENTER OF DUCT TO BE MOUNTED AT 2'-4" ABOVE POOL DECK. COORDINATE WITH ARCHITECT PRIOR TO FINAL ROUTING OF DUCTWORK AND MOUNTING DIFFUSERS.
- INSTALL HEAVY DUTY ALUMINUM RETURN GRILLE (8) AT 23'-0" ABOVE FINISHED FLOOR TO CENTER OF DIFFUSER.
- PROVIDE 8" O.D. WITH MANUAL DAMPER (105 CFM) AND CONNECT TO VRF-S11. VRF-S11 IS LOCATED BELOW O.A. DUCT SHOWN.
- IN-LINE FANS INSTALLED ABOVE CEILING SHALL BE ACCESSED AND MAINTAINED VIA REMOVABLE CEILING TILE. COORDINATE FAN / MOTOR ARRANGEMENT, ROTATION, DISCHARGE POSITION AND MEETING MANUFACTURER REQUIREMENTS FOR SERVICE CLEARANCE PRIOR TO INSTALLING.
- PARALLEL LINEAR METAL CEILING DIFFUSER SHOWN. PROVIDED BY ARCHITECTURE METAL CEILING MANUFACTURER. COORDINATE FINAL LOCATION WITH ARCHITECT.
- PROVIDE PARALLEL METAL CEILING ACCESS PANEL. COORDINATE FINAL SIZE AND LOCATION WITH ARCHITECT. ACCESS SIZE SHALL BE BIGGER THAN THE EQUIPMENT TO ALLOW FOR REMOVAL OF EQUIPMENT AND MAINTENANCE.
- INSTALL ALUMINUM SUPPLY SPIRAL DUCT GRILLE AT BOTTOM CENTER FLAT PORTION OF DOUBLE WALL OVAL DUCT WITH 22' DEFLECTION BLOWING IN DIRECTION AGAINST PERIMETER EXTERIOR OR INTERIOR WALL.
- PRIOR TO INSTALL ALL EQUIPMENT ON ROOF, COORDINATE WITH ALL EQUIPMENT MANUFACTURE TO VERIFY ACCESS MAINTENANCE AND CLEARANCE REQUIREMENTS PRIOR TO INSTALLING.
- REVISION 9: 36"x22" SUPPLY AND EXHAUST AIR DUCT DOWN TO SECOND FLOOR.**
- REFER TO DRAWING MB13 FOR POOL DEHUMIDIFICATION AIR HANDLING UNIT CONTROLS.
- 11: COVER OPENED DUCT WITH WIRE MESH SCREEN.**
- CONCEALED RETURN DUCT SERVING POOL SHALL BE CONSTRUCTED OF ALUMINUM RECTANGLE DUCT WITH INSULATION.
- PROVIDE 3'-0" x 4'-0" ACCESS PANEL FOR BC-H06A AND VRF-H38. REFER TO ARCHITECTURAL PLAN FOR EXACT LOCATION.
- PROVIDE 2'-0" x 4'-0" ACCESS PANEL FOR BC-H06B. REFER TO ARCHITECTURAL PLAN FOR EXACT LOCATION.
- PROVIDE FIELD APPLIED METAL JACKETING FOR ALL EXPOSED DUCTWORK OUTSIDE ON THE ROOF. REFER TO SPECIFICATIONS FOR MORE INFORMATION.
- PROVIDE ALUMINUM EXHAUST LOUVER WITH 1.0 SQ FT MINIMUM FREE AREA. SEE ARCHITECTURE PLANS FOR LOCATION AND SPECIFICATIONS. REFER TO PLENUM CONNECTION DETAIL FOR MORE INFORMATION.
- CONNECT 5" Ø SUPPLY/EXHAUST DUCT TO SUANA. **BALANCE SUPPLY AND EXHAUST AIRFLOW TO 55 CFM EACH**. REFER TO SPA DRAWINGS FOR MORE INFORMATION.
- PROVIDE 8" Ø O.A. WITH MANUAL DAMPER (60 CFM) AND CONNECT TO RETURN DUCT AS SHOWN. VRF IS LOCATED BELOW STACKED DUCTWORK.
- PROVIDE 8" Ø O.A. WITH MANUAL DAMPER (70 CFM) AND CONNECT TO RETURN DUCT AS SHOWN. VRF IS LOCATED BELOW STACKED DUCTWORK.
- PROVIDE REMOTE MANUAL VOLUME DAMPER.
- CONNECT 5" Ø SUPPLY/EXHAUST DUCT TO STEAM. **BALANCE SUPPLY AIRFLOW TO 50 CFM AND EXHAUST AIRFLOW TO 60 CFM**. REFER TO SPA DRAWINGS FOR MORE INFORMATION.
- ROUTE 16"x4" EXHAUST DUCT DOWN IN WALL CAVITY TO ARCHITECTURAL OPENING IN BACK OF AV CABINET NEAR THE FLOOR. PROVIDE A **BALANCING DAMPER TO 150 CFM**.
- EXHAUST AIR TO DISCHARGE IN PLENUM SPACE. PROVIDE WIRE MESH SCREEN AT END OF DUCT OPENING.
- INSTALL HEATER IN STARWELL 80" AFF.
- SMOKE DETECTOR WIRED TO SHUT DOWN VRF INDOOR UNIT UPON DETECTION OF SMOKE. SMOKE DETECTOR PROVIDED BY FIRE ALARM. SEE FIRE ALARM DRAWINGS FOR EXACT LOCATION.



KEY PLAN

BULLETIN 24
 02/09/2024



PIC (PS) _____ DL (CF) _____
 PM (SP) _____ DTL (KB) _____

ISSUE	01/31/2023
JOB	30611.00
DRAWN	MWM
SCALE	As indicated
REVISIONS	
5	2023-0214 BULLETIN 01
6	2023-0315 BULLETIN 02
10	2023-0427 BULLETIN 06
11	2023-0512 BULLETIN 08
21	2023-0920 BULLETIN 17
26	2024-0125 BULLETIN 22
27	2024-0209 BULLETIN 24

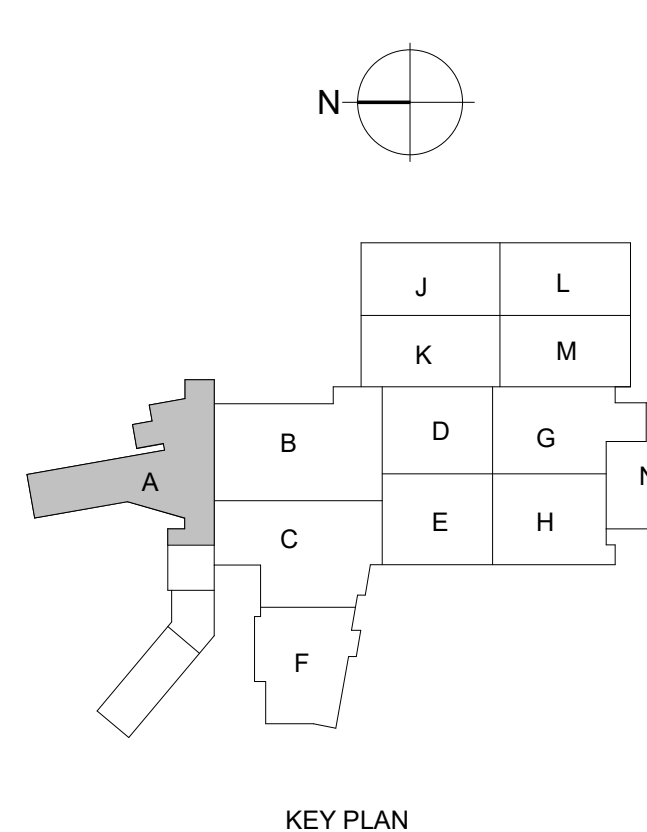
HVAC DUCTWORK - THIRD FLOOR LEVEL - AREA A

MH-113A

1 HVAC DUCTWORK - THIRD FLOOR LEVEL - AREA A
 1/8" = 1'-0"

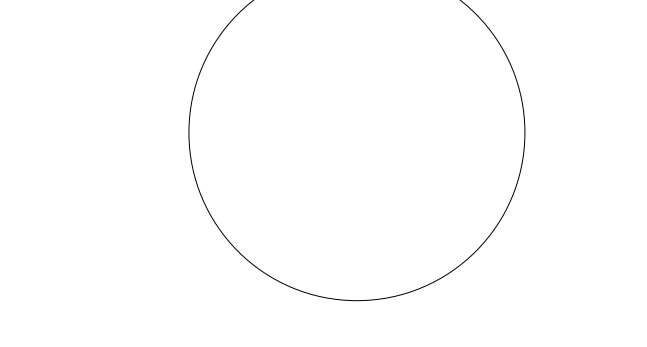
20230204 4 10:46 PM

- GENERAL NOTES:**
- A. SEE PIPING PLANS FOR CONDENSATE AND VRF PIPING.
- KEYNOTES:**
1. ROUTE 6" FLUE VENT FROM WATER HEATER CONNECTION UP THRU ROOF ABOVE. FLUE VENT SHALL BE CONSTRUCTED OF SCHEDULE 40 SOLID PVC PIPE. INSTALL VENT PER MANUFACTURER INSTRUCTIONS. ANY HORIZONTAL RUNS SHALL SLOPE BACK TOWARDS WATER HEATER AT A MINIMUM OF 1/4 INCH PER LINEAR FOOT.
 2. ROUTE 6" COMBUSTION AIR VENT FROM WATER HEATER CONNECTION TO EXTERIOR WALL AS SHOWN. PROVIDE ANGLED WALL CAP WITH WIRE MESH SCREEN AT VENT TERMINATION. MAINTAIN A MINIMUM OF 1" BETWEEN EACH TERMINATION. INSTALL VENT PER MANUFACTURER INSTRUCTIONS.
 3. GAS-FIRED WATER HEATER. SEE PLUMBING DRAWINGS FOR MORE INFORMATION. TYPICAL.
 4. PROVIDE GEAR TYPE VOLUME DAMPER WITH MEMORY STOPS, YOUNG REGULATOR OR EQUAL. THIS IS TYPICAL FOR ALL STAIR PRESSURIZATION VOLUME DAMPERS.
 5. PROVIDE 2-HR FIRE WRAP FROM THE SHAFT PENETRATION TO ROOF PENETRATION.
 6. 30"x20" EA UP TO KEF-801 ON ROOF ABOVE. TRANSITION DUCT TO MATCH FAN CONNECTION SIZE.
 7. 12"x12" EA UP TO KEF-802 ON ROOF ABOVE. TRANSITION DUCT TO MATCH FAN CONNECTION SIZE.
 8. 20"x20" EA UP TO KEF-803 ON ROOF ABOVE. TRANSITION DUCT TO MATCH FAN CONNECTION SIZE.
 9. TYPE 1 KITCHEN HOOD. SEE FOOD SERVICE DRAWINGS FOR HOOD INFORMATION. SIZE AND BALANCE ALL EXHAUST DUCT AND MAKE-UP DUCT CONNECTIONS PER FOOD SERVICE PLANS.
 10. 18"x18" SA DN FROM MAJ-101 ON ROOF ABOVE.
 11. 28"x20" SA DN FROM MAJ-101 ON ROOF ABOVE.
 12. PROVIDE SINGLE CONTROLLER EQUAL TO MODEL PASCR165 FOR THE CONTROL OF ALL FOUR PATIO HEATERS.
 13. DISHWASHER EXHAUST DUCT SHALL BE ALUMINUM CONSTRUCTION AND SLOPE TOWARDS DISHWASHER CONNECTIONS. DISHWASHER CONNECTIONS TO WAREHOUSE BY KITCHEN CONSULTANT. SEE FOOD SERVICE PLANS.
 14. SMOKE DETECTOR WIRE TO SHUT DOWN VRF INDOOR UNIT UPON DETECTION OF SMOKE. SMOKE DETECTOR PROVIDED BY FIRE ALARM. SEE FIRE ALARM DRAWINGS FOR EXACT LOCATION.



KEY PLAN

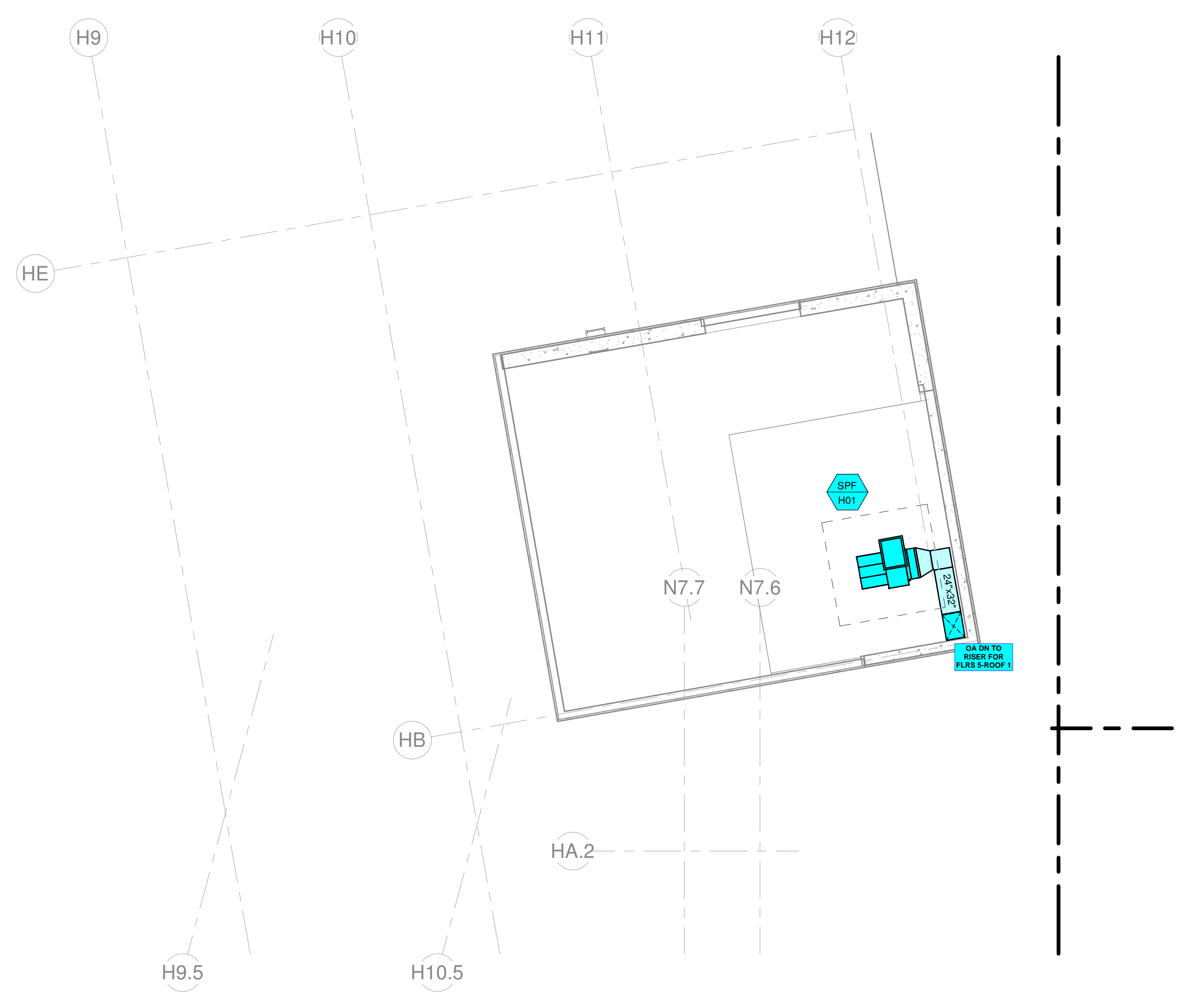
BULLETIN 28
 03/29/2024



PIC (PS)	DL (CF)
PM (SP)	DTL (KB)
ISSUE	01/31/2023
JOB	30611.00
DRAWN	MWM
SCALE	As indicated
REVISIONS	
5	2023-0214 BULLETIN 01
6	2023-0315 BULLETIN 02
10	2023-0427 BULLETIN 06
28	2024-0125 BULLETIN 22
31	2024-0229 BULLETIN 28

1 HVAC DUCTWORK - TWELFTH FLOOR LEVEL
 1/8" = 1'-0"

1/20/2023 11:27:07 AM

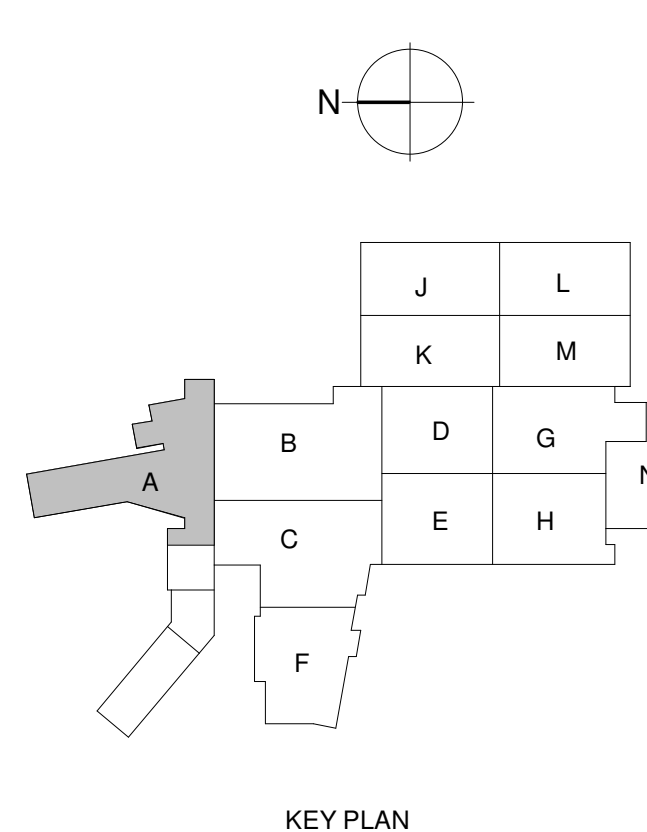


① HVAC DUCTWORK - HOTEL ROOF LEVEL 02
1/8" = 1'-0"

Additions and Renovations to Harrah's Cherokee Valley River
 777 Casino Parkway
 Murphy, NC 28906

JCJ ARCHITECTURE
 120 HUYSHOPE AVENUE
 SUITE 400
 HARTFORD, CT 06106
 860.247.9226

© 2022 JCJ Architecture
 CONSULTANT:
VANDERWEIL
 E.C. Vanderweil Engineers, LLP : 417.433.7433 FAX
 274 Summer Street : 417.433.7401 FAX
 Boston, MA 02210 : vanderweil.com



KEY PLAN
 PERMIT SET
 01/31/2023



ISSUE	12/22/2022
JOB	30611.00
DRAWN	MWM
SCALE	1/8" = 1'-0"
REVISIONS	

HVAC DUCTWORK - HOTEL ROOF LEVEL 02

MH-124