

HOOD NO.	MARK	MODEL	HOOD DIMENSIONS (IN.)			HOOD CONSTR.	COOKING LOAD / DUTY RATING	EXHAUST					SUPPLY		TOTAL WEIGHT LBS.	SECTION LOCATION	
			LENGTH	WIDTH	HEIGHT			COLLAR(S)			CFM	S.P.	MUA CFM	AC CFM			
1	GRIDDLE HOOD	XGEP-64-S	64	TOP 23 BOT 8	FRT 12 BACK 36	430 SS WHERE EXPOSED	MEDIUM	1500	12	12		1500	1.918			136.8	SINGLE

HOOD NO.	MARK	LIGHTING DETAILS			GREASE FILTRATION DETAILS			UTILITY CABINET(S)				
		FIXTURE TYPE	QTY	FOOT CANDLES	TYPE / MODEL MATERIAL	QTY	SIZE (IN.)	LOCATION	FIRE SYSTEM TYPE	SIZE	MODEL	CONTROLS INTERFACE
1	GRIDDLE HOOD				GREASE GRABBER	4	16					
					STAINLESS STEEL	0	20	16				

**HOOD OPTIONS**  
 UL 710 LISTED W/ OUT EXHAUST FIRE DAMPER - UL #R25625  
 BACK NON-INTEGRAL AIR SPACE - 3 IN WIDE  
 26 IN HIGH CEILING ENCLOSURES - FRONT LEFT RIGHT - FIELD INSTALLED  
 FACTORY MOUNTED EXHAUST COLLAR(S)  
 PERFORMANCE ENHANCING LIP (PEL) TECHNOLOGY  
 STANDING SEAM CONSTRUCTION FOR SUPERIOR STRENGTH

**SPECIAL DESIGN REQUESTS**  
 SDR #K1100145 - FLUE BYPASS HOOD  
 SDR #K1800144 - CULVERS 4VAT 2FIRE PROCESS - GRIDDLE HOOD

MARK INFORMATION		FAN INFORMATION					MOTOR INFORMATION						
QTY	MARK	MODEL	VOLUME (CFM)	TOTAL EXTERNAL SP (IN WG)	FAN RPM	OPERATING POWER (HP)	WEIGHT (LB.)	SIZE (HP)	V/C/P	ENCLOSURE	MOTOR RPM	WINDINGS	NEC FLA*
1	PRV-2 Griddle Fan	XCUE-140-VG	1,500	1.801	1,725	0.83	92	1	115/60/1	OP	1725	1	16

\*NEC FLA - Based on table 430.250 or 430.248 of National Electrical Code 2020. Actual motor FLA may vary for sizing thermal overload, consult factory"

**PRV-2 Griddle Fan - SELECTED OPTIONS AND ACCESSORIES**

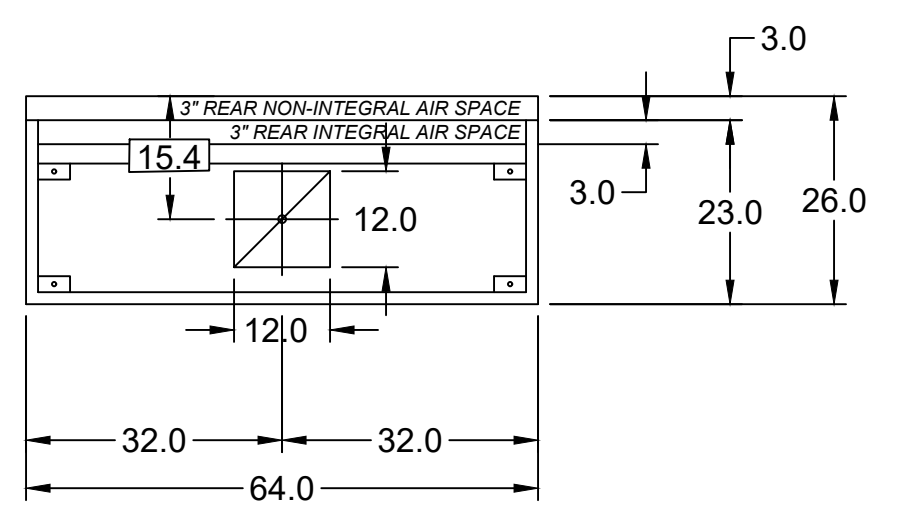
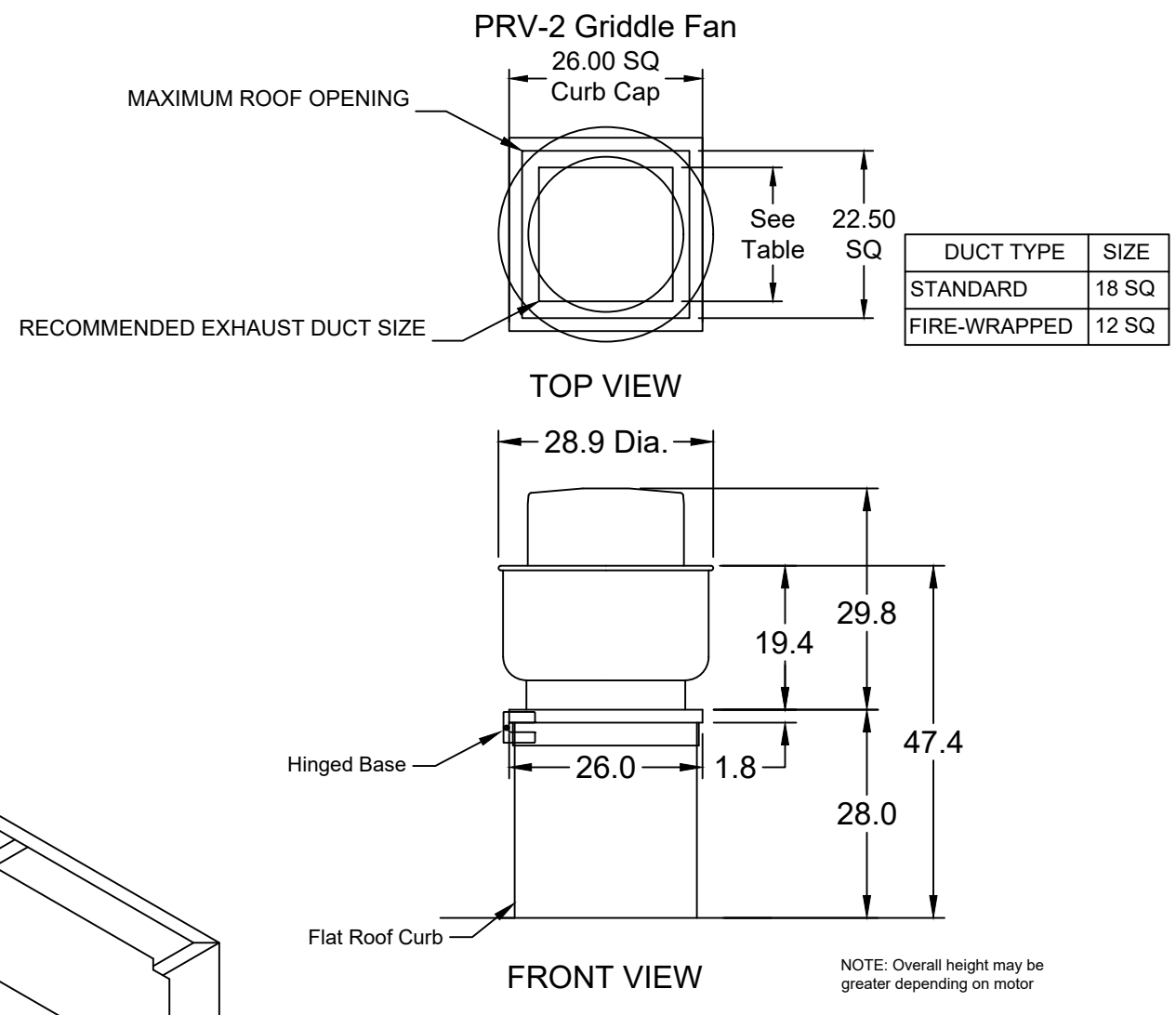
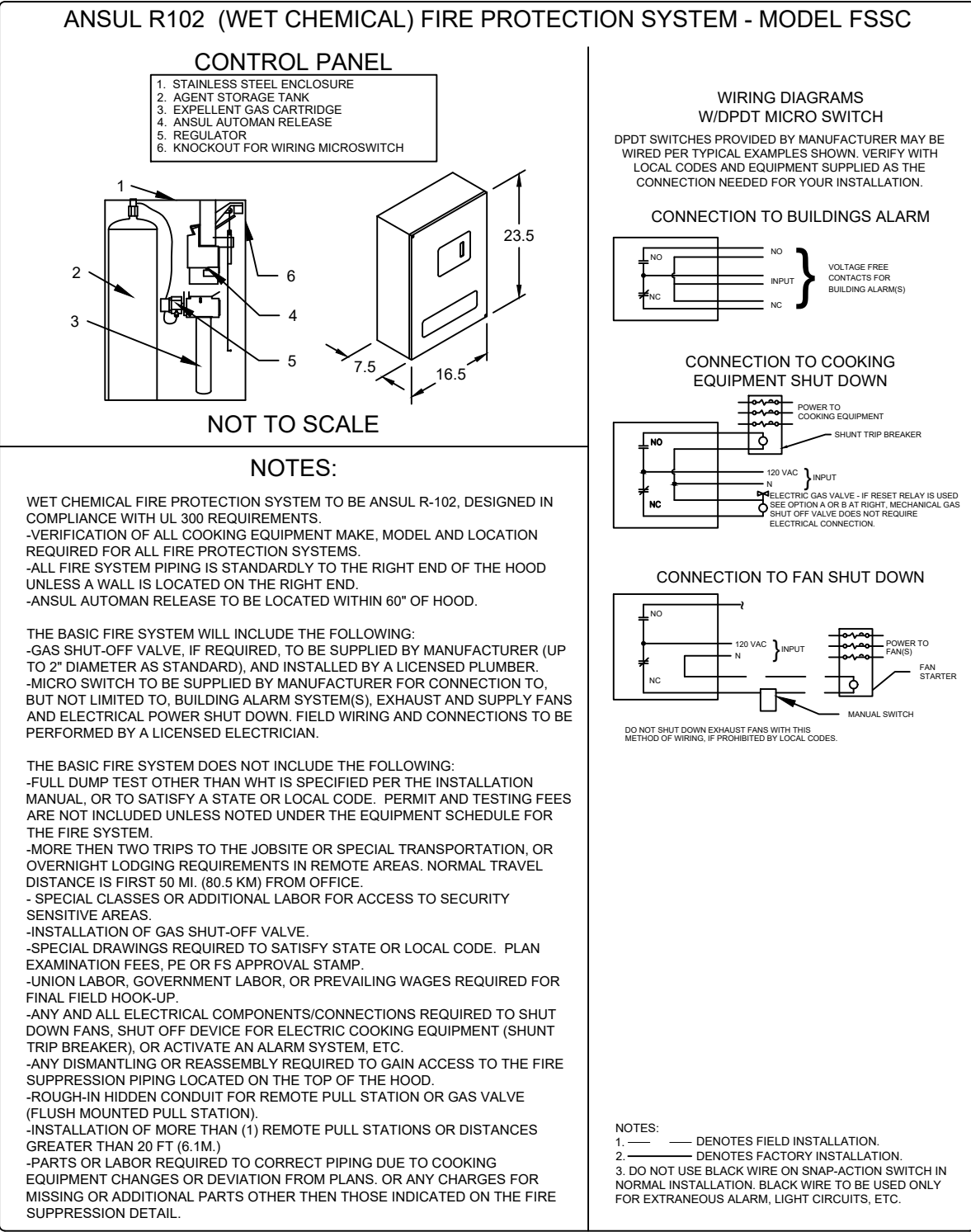
- One piece fully welded windband
- Tapered bushing wheel hub
- Breather tube outlet area min. 4.4 sq. in. (sizes 99-480), 2.0 sq. in. (sizes 60-95)
- Min. windband material thickness: 0.051" aluminum (060-240), 0.064" aluminum (240HP, 240XP), 0.080" aluminum (sizes 300-480)
- Larger Curb Cap Size - 26 Square
- UL/cUL 762 Listed - "Power Ventilators for Rest. Exh. Appliances"
- Switch, NEMA-3R, Toggle, Shipped with Unit
- Hinge, Factory Installed
- High Temp Curb Seal Rated for Continuous Duty at 1500 F (Factory Attached)
- Grease Trap (PN 475538)
- Clean-out Port - Factory Installed

MARK	MODEL	LOCATION	FLOW POINTS		SUPPLY LINE	DETECTION	MARK(S) PROTECTED BY FIRE SYSTEM
			HOODS	PCU			
FIRE SUPPRESSION-GRIDDLE HOOD	ANSUL R-102 WET CHEMICAL	REMOTE MOUNTED	6 UTILIZED	11 AVAILABLE	CONTINUOUS	FUSIBLE LINK	GRIDDLE HOOD SECTION 1

**FIRE SYSTEM INFORMATION**

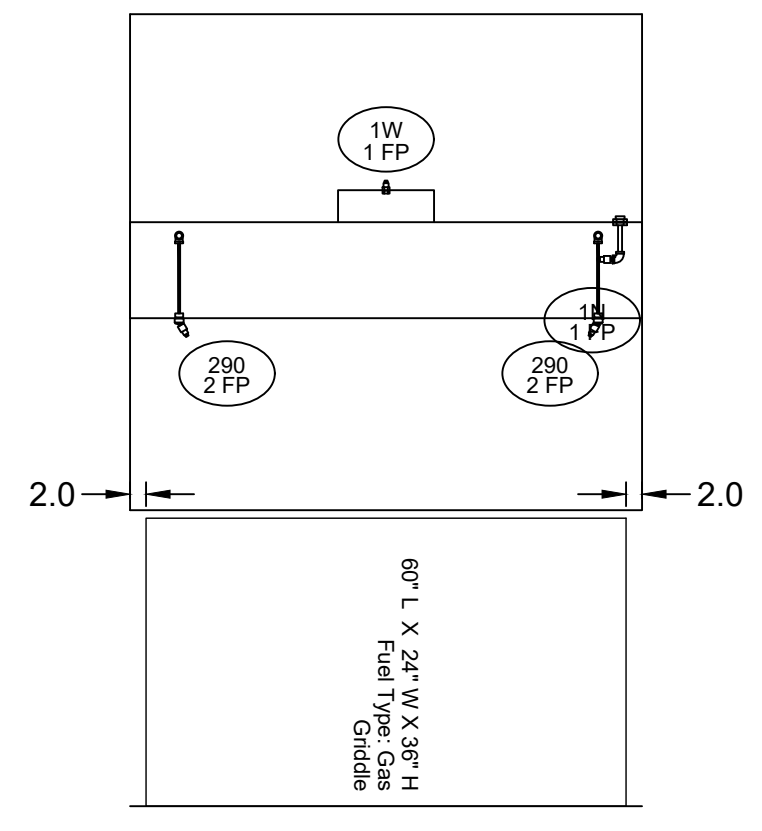
**FIRE SYSTEM OPTIONS AND ACCESSORIES**  
 FULL INSTALLATION (INCLUDES PRE-PIPED HOOD(S) WITH DETECTION AND FACTORY COORDINATED INSTALL)  
 CHROME SLEEVES FOR FACTORY PROVIDED APPLIANCES DROPS - INCLUDED  
 METAL BLOW-OFF CAPS - INCLUDED  
 HOOD SUPPRESSION TANK - INCLUDED - 3 GAL. - ((1) 3.0 TANK(S))  
 REMOTE PULL STATION - STANDARD - FIELD INSTALLATION AT SINGLE POINT OF EGRESS

**SPECIAL DESIGN REQUESTS**  
 SDR #K1800144 - CULVERS 4VAT 2FIRE PROCESS - GRIDDLE HOOD

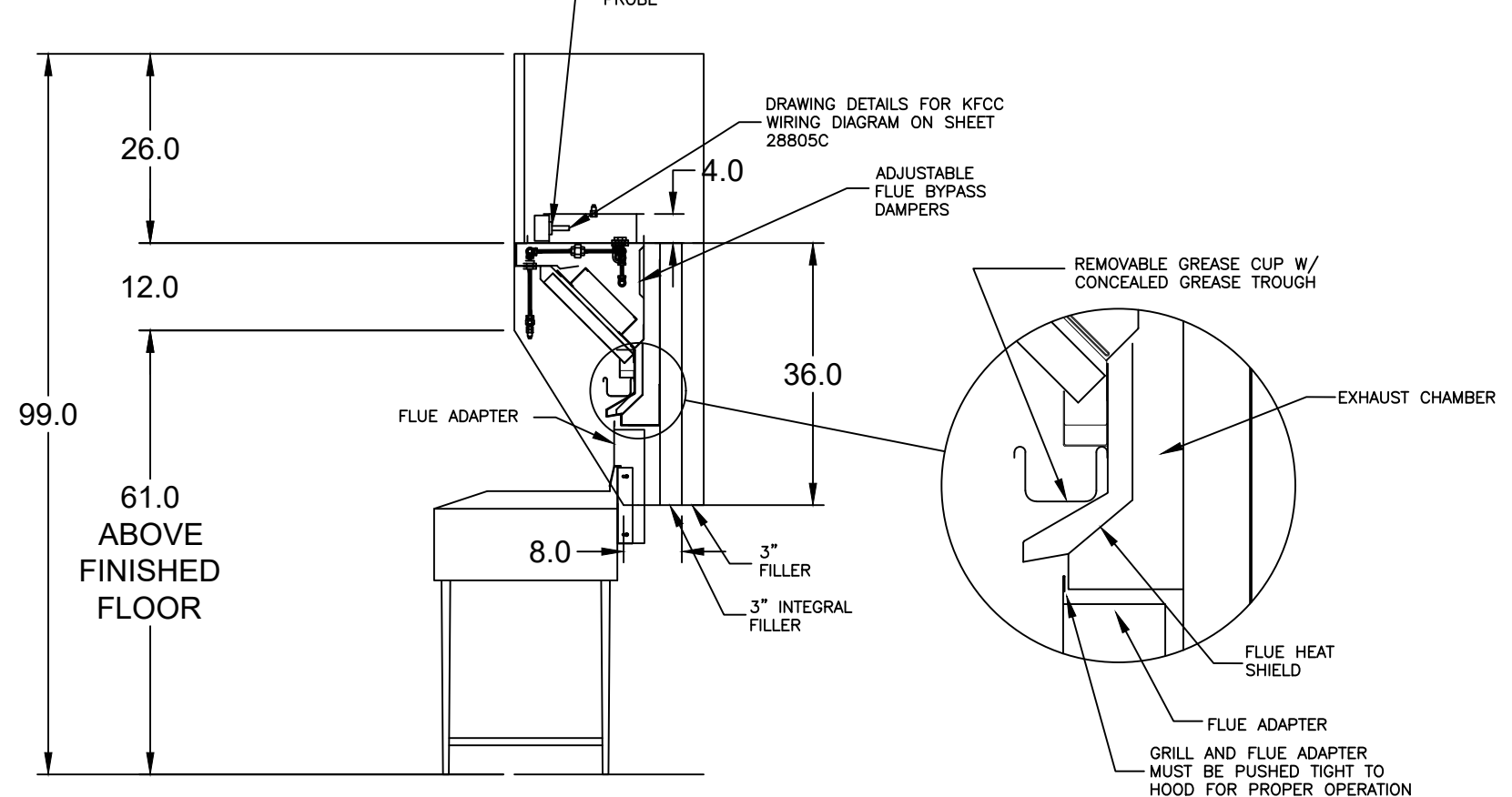


MARK: Griddle Hood - SECTION 1 PLAN VIEW

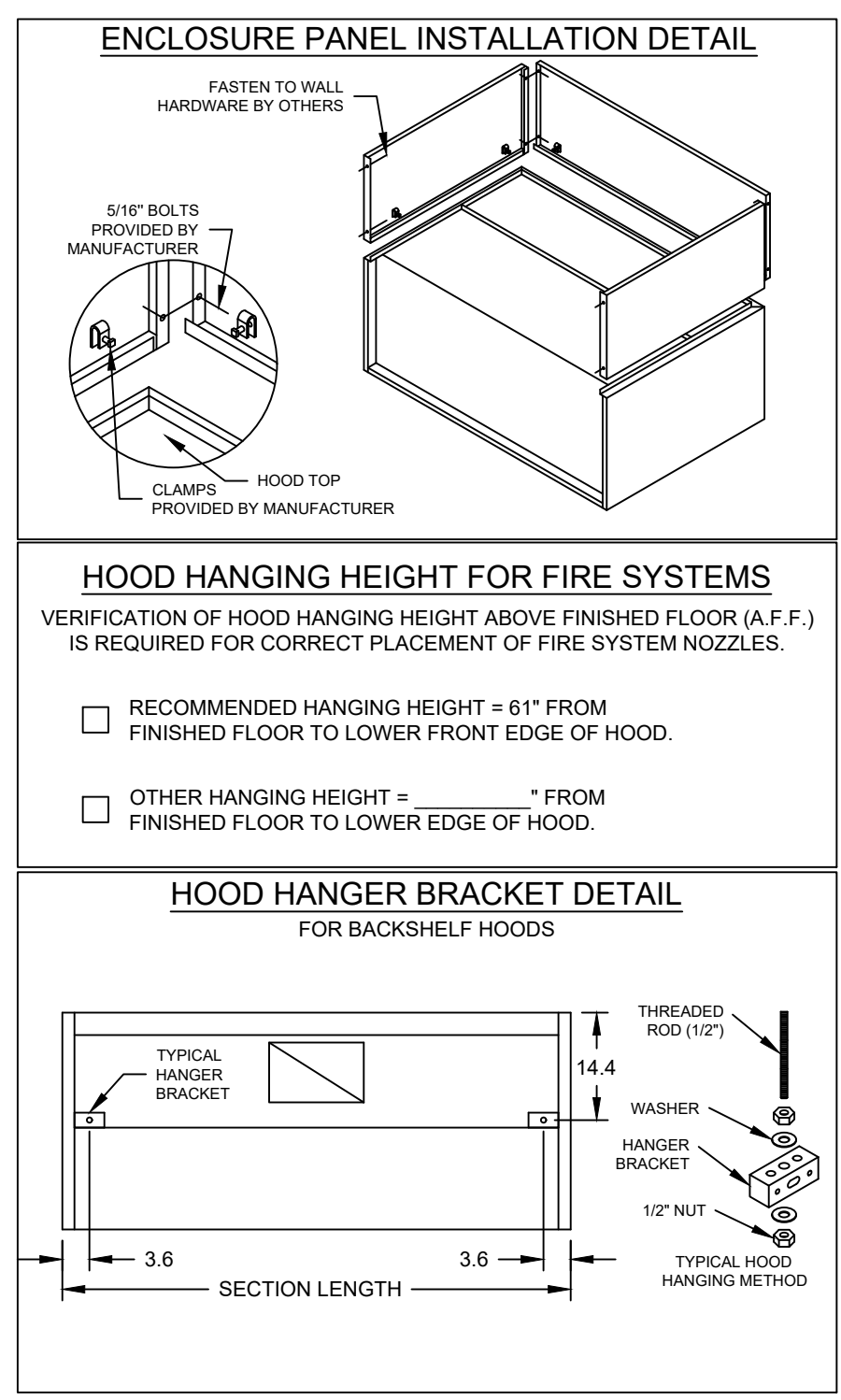
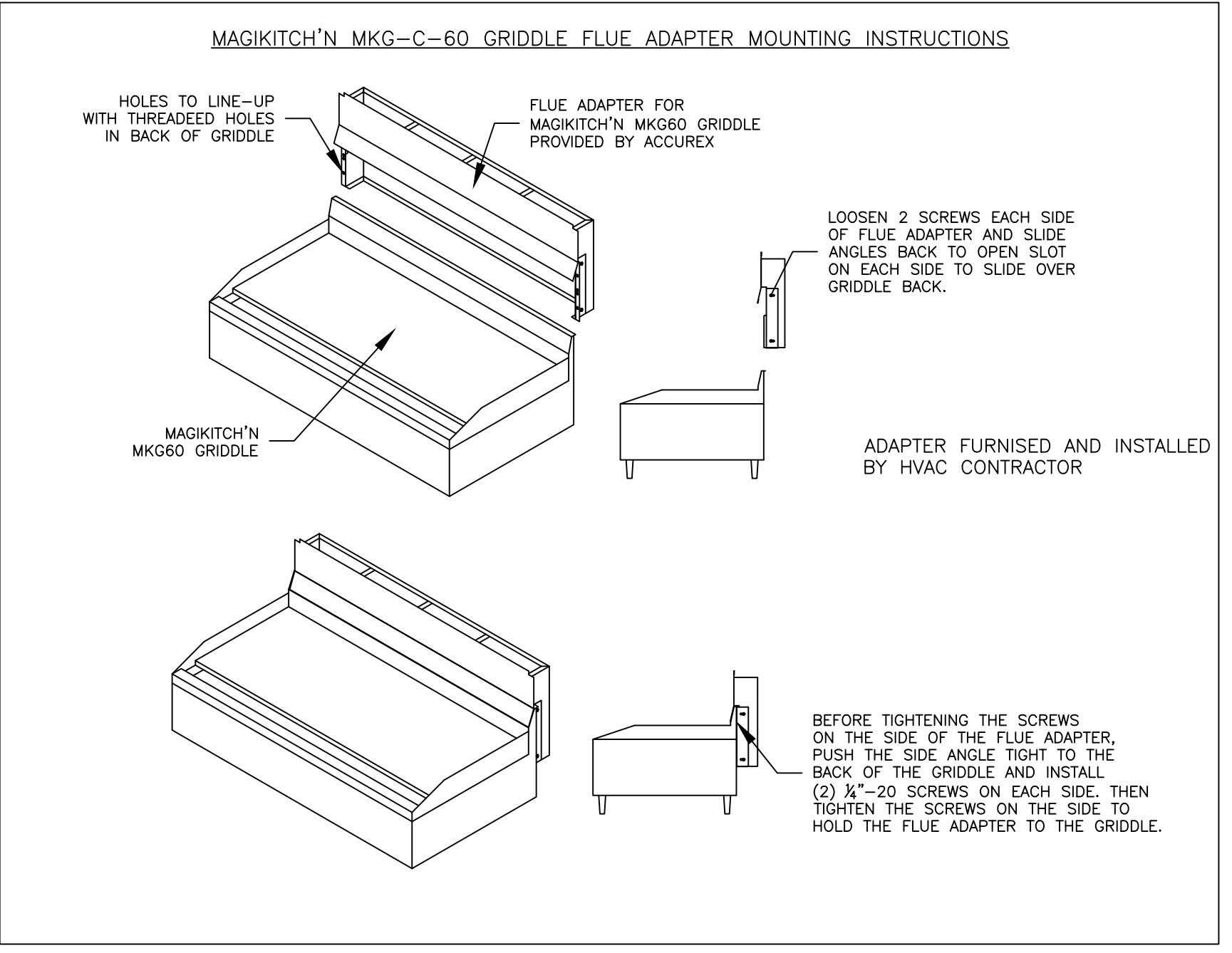
MUST USE WITH MAGIKITCH'N MODEL MKG-C-60  
 VERIFY MAGIKITCHEN OR ANETS GRILL



SECTION 1 ELEVATION VIEW



MARK: Griddle Hood SECTION VIEW

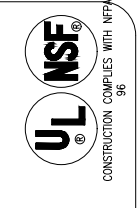


**ACCUREX**

PROJECT: 5/31/2024  
 MARK: GRIDDLE HOOD  
 FIRE SUPPRESSION-GRIDDLE HOOD

ACCUREX - WI, IA  
 PHILLIP KRAFT  
 PHILLIP.KRAFT@ACCUREX.COM  
 262-227-7865

CULVERS - METRO L 2021 (NC)  
 1-27-2023



© 2024

NEW CULVER'S RESTAURANT  
 SWC Martineau Rd & Debruin Rd  
 Combined Locks, WI 54113  
 County of OUTAGAMIE

OWNER:  
 Never Stop Dreaming  
 200 South State Street  
 Appleton, WI 54915  
 Amanda McMullen  
 920-205-7769

OLLMANN ASSOCIATES ARCHITECTS, P.C.  
 200 South State Street  
 Belvidere, Illinois 61008  
 815-544-7790 Phone  
 © OAA. All rights reserved. Any copying, transmission or disclosure subject to OAA written approval.

GRIDDLE HOOD/EXHAUST SCHEDULE & DETAILS

Date: 8-22-2024  
 Revision:

2024-077  
 M202



**Ceiling Exhaust Fan**

MARK INFORMATION		FAN INFORMATION						MOTOR INFORMATION				
QTY	MARK	MODEL	VOLUME (CFM)	TOTAL EXTERNAL SP (IN WG)	FAN RPM	OPERATING POWER (HP)	WEIGHT (LB.)	SIZE (HP)	V/C/P	ENCLOSURE	MOTOR RPM	WINDINGS
1	EF-1A	XCR-B80	75	0.125	881	0.01	10	0	115/60/1	OP	900	1

**EF-1A : SELECTED OPTIONS AND ACCESSORIES**

UL/cUL 507 Listed - Electric Fan  
 Solid State Speed Control, 6 Amp, Mounted and Wired Internally  
 Round Hooded Wall Cap, (PN: WC-6) Shipped Loose  
 Round Duct Connection  
 Adjustable easy installation mounting bracket  
 Standard Grille  
 Polypropylene Wheel Material  
 Can Be Used to Comply with: ASHRAE 62.2 and Washington State Energy Code

**SPECIAL DESIGN REQUESTS**

(1)-WC-4 Wall Cap (F1600858)

**Direct Drive Centrifugal Roof Exhaust Fan**

MARK INFORMATION		FAN INFORMATION						MOTOR INFORMATION					
QTY	MARK	MODEL	VOLUME (CFM)	TOTAL EXTERNAL SP (IN WG)	FAN RPM	OPERATING POWER (HP)	WEIGHT (LB.)	SIZE (HP)	V/C/P	ENCLOSURE	MOTOR RPM	WINDINGS	NEC FLA*
1	PRV-1 Restroom	XRED-090-VG	375	0.5	1,466	0.06	40	0.1	115/60/1	TN	1725	1	NA

\*NEC FLA - Based on table 430.250 or 430.248 of National Electrical Code 2020. Actual motor FLA may vary for sizing thermal overload, consult factory

**PRV-1 Restroom : SELECTED OPTIONS AND ACCESSORIES**

Standard Curb Cap Size - 17 Square  
 UL/cUL 705 Listed - "Power Ventilators"  
 Switch, NEMA-1, Toggle, Shipped with Unit  
 Hinge, Factory Installed  
 Damper Shipped Loose, BD-100-PB-10X10, Gravity Operated, Not Coated  
 Birdscreen: Galvanized, nom. 84% Free Area  
 Composite Wheel Material

**CONTROL INFORMATION**

MARK	ELECTRICAL CONTROL PACKAGE		USER INTERFACE	
	MODEL	LOCATION	TYPE	LOCATION
CONTROLS	XKC-CV-S-22-2-1-0	SHIP LOOSE ENCLOSURE	FULL COLOR TOUCHSCREEN	SHIP LOOSE

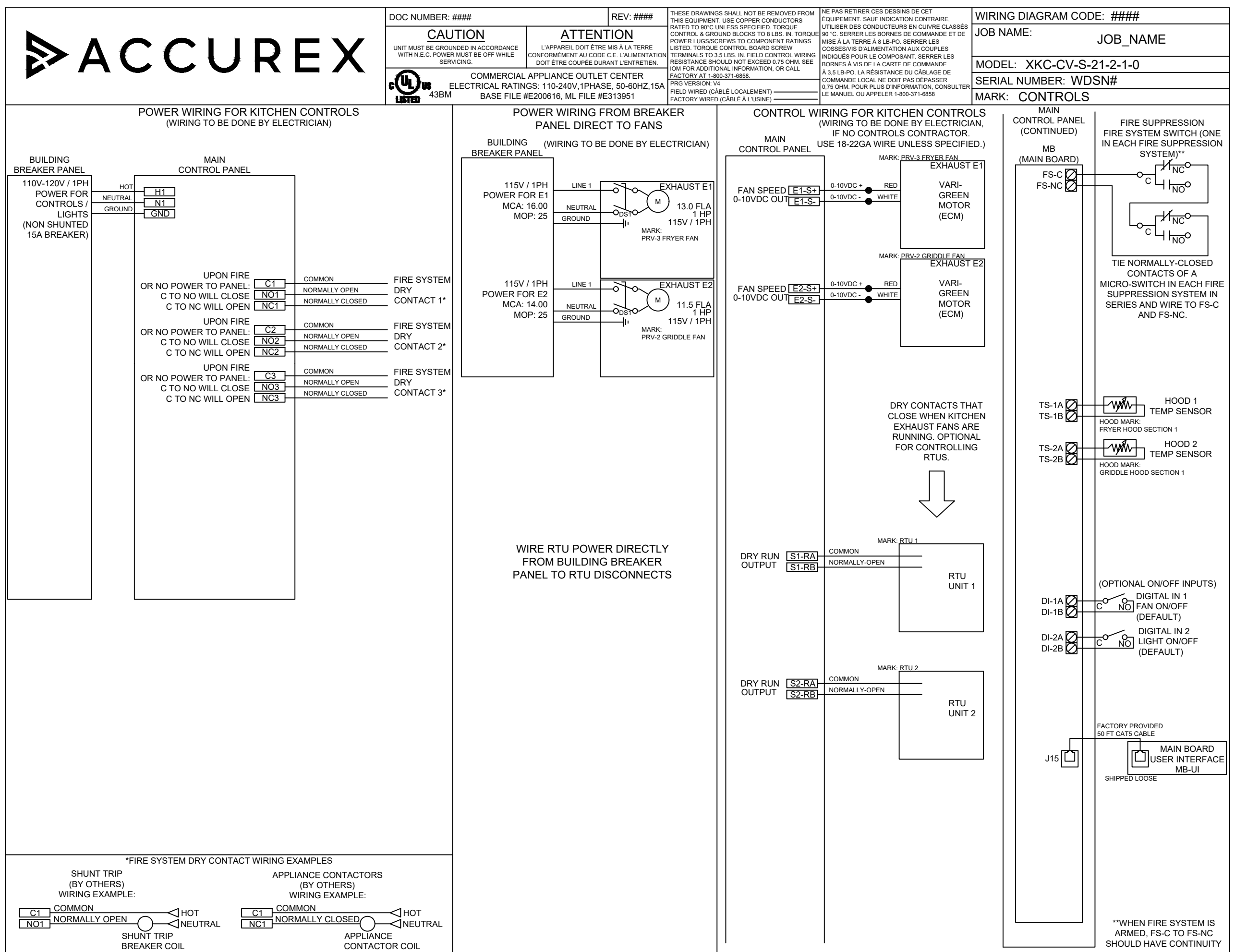
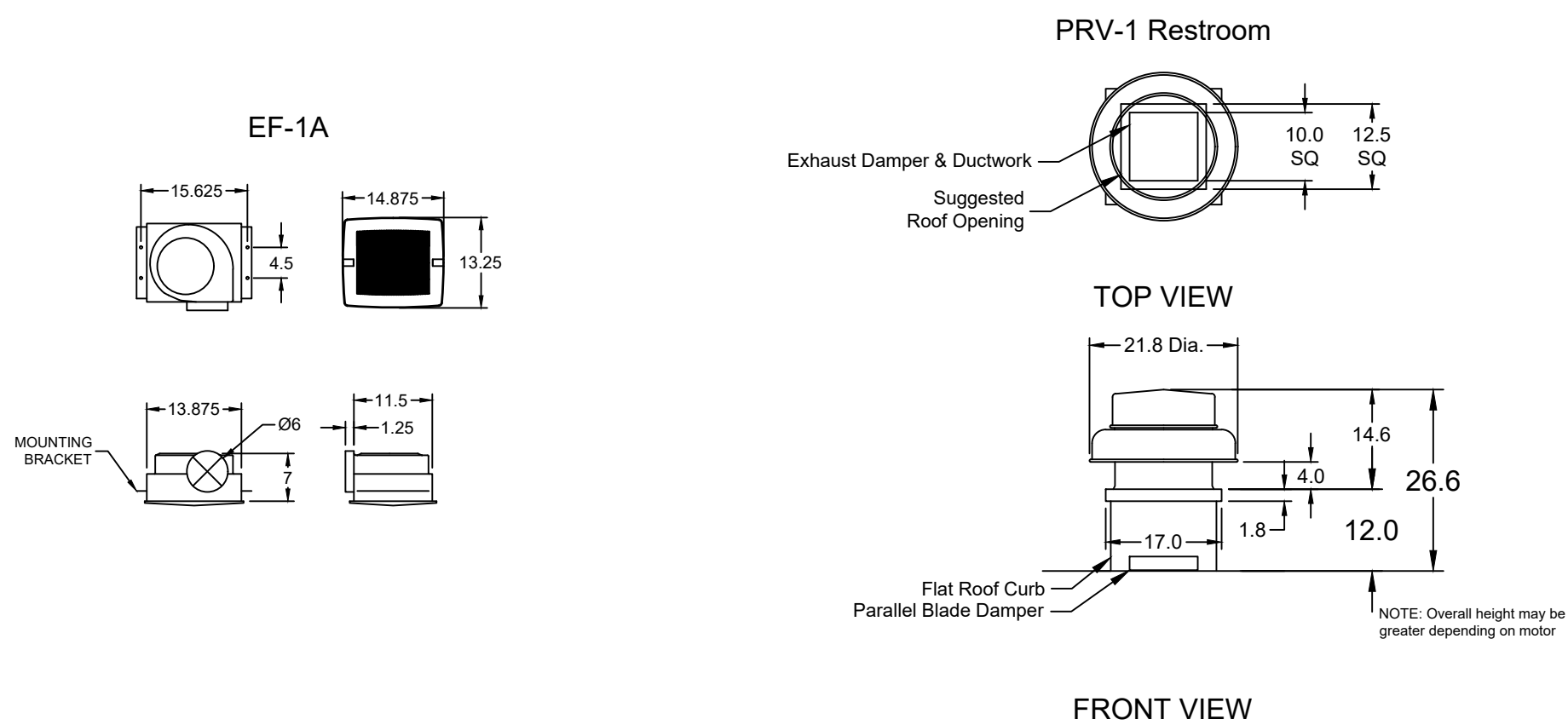
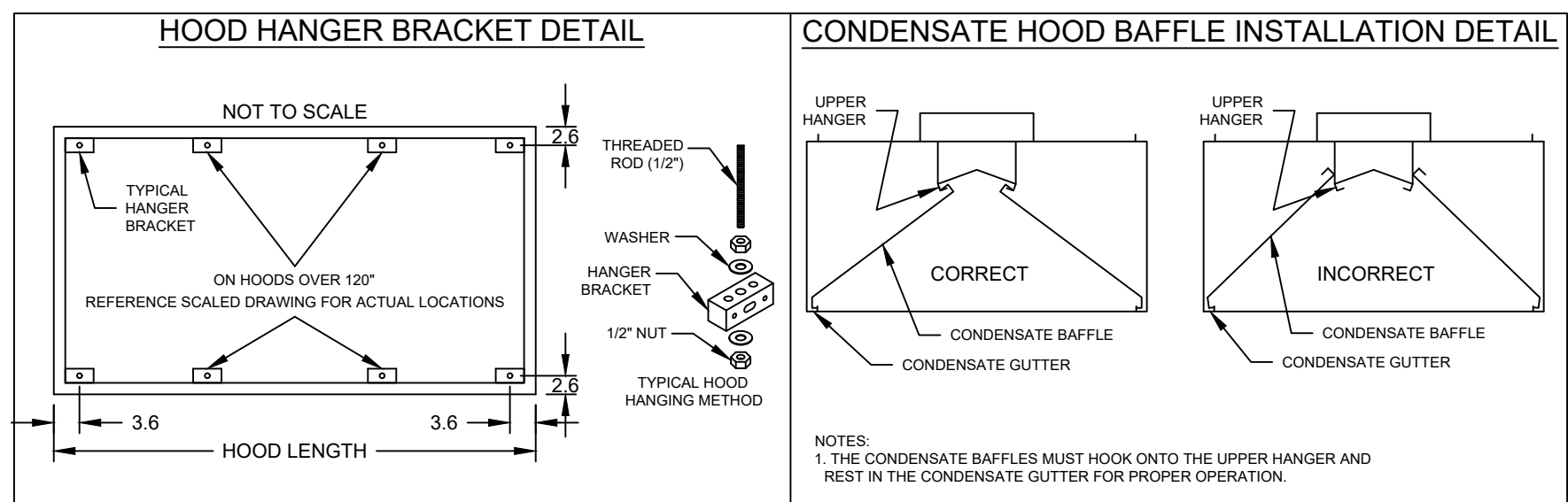
FANS CONTROLLED											
FAN #	TYPE	FAN	FAN MARK	ZONE	CFM	MOTOR HP	MOTOR VOLT	CYCLE	MOTOR PHASE	MOTOR STARTER IN PANEL	VFD IN PANEL
1	SUPPLY	S1	RTU-1	1	1500	1	208	60	3	NO	NO
2	SUPPLY	S2	RTU-2	2	1500	1	208	60	3	NO	NO
3	EXHAUST	E1	PRV-2 GRIDDLE FAN	2	1497	1	115	60	1	NO	NO
4	EXHAUST	E2	PRV-3 FRYER FAN	1	1500	1	115	60	1	NO	NO

**CONTROL FEATURES**

TEMP SENSORS (FACTORY INSTALLED) - QTY. 2  
 DRY FIRE CONTACTS - QTY. 2  
 EXHAUST MAX DURING FIRE  
 SUPPLY OFF DURING FIRE

**SPECIAL DESIGN REQUESTS**

SDR #K2000462 - CULVERS CONTROL PANEL - EXTRA SET OF FIRE CONTACTS - REVISE WIRING DIAGRAMS

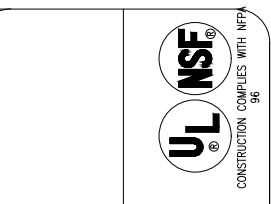


**ACCUREX**

PROJECT: 5/31/2024  
 CULVERS - METROL 2021 (NC)  
 1.27.2023

ITEM 25 CONDENSATE HOOD PRV-1 RESTROOM CONTROLS

ACCUREX - W/LA  
 PHILLIP KRAFT  
 PHILLIP.KRAFT@ACCUREX.COM  
 262-227-7865



**FAN SCHEDULE & DETAILS**

NEW CULVER'S RESTAURANT  
 SWC Martineau Rd & Debruin Rd  
 Combined Locks, WI 54113  
 County of OUTAGAMIE



OWNER:  
 Never Stop Dreaming  
 N250 Eastown Lane  
 Appleton, WI 54915  
 Amanda McMullen  
 920-205-7769

OLLMANN ASSOCIATES ARCHITECTS, P.C.  
 200 South State Street  
 Belvidere, Illinois 61008  
 815-544-7790 Phone  
 © OAA. All rights reserved. any copying, transmission or disclosure subject to OAA written approval.

Date: 8-22-2024  
 Revision:

2024-077

M204

© 2024