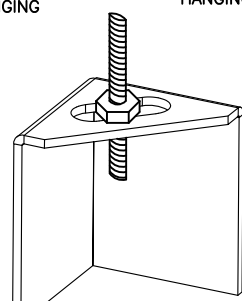


ND-2 HANGING ANGLE DETAIL

1/2" DIA. ALL THREAD ROD CONNECTED TO ROOF JOIST THROUGH ANOTHER HANGING ANGLE

1/2" DIA. HEAVY DUTY NUT ONE ABOVE AND ONE BELOW HANGING ANGLE



*ROD AND NUTS TO BE SUPPLIED BY INSTALLING CONTRACTOR HANGING ANGLE IS PRE-PUNCHED AT FACTORY

HANGING ANGLE LOCATIONS

| HOOD STYLE | DIM FROM REAR | DIM FROM FRONT (24"H) | DIM FROM FRONT (30"H) |
|-------------------------|---------------|-----------------------|-----------------------|
| CANOPY ND2 | 4.166" | 2.246" | 2.246" |
| ND2-PSP-F | 4.166" | 2.246" | 2.246" |
| BACKSHELF BD-2 | 4.166" | 2.246" | - |
| VHB/VHB-G | 36"x36" | 42"x42" | 48"x48" |
| FRONT/BACK DIMS BY SIZE | 2.246" | 2.246" | 2.246" |

CALCULATIONS UTILIZED

EXHAUST CFM=LENGTH OF HOOD X CFM/LIN.FT. (LOAD)

SUPPLY CFM=EXHAUST CFM X PERCENTAGE REQUIRED

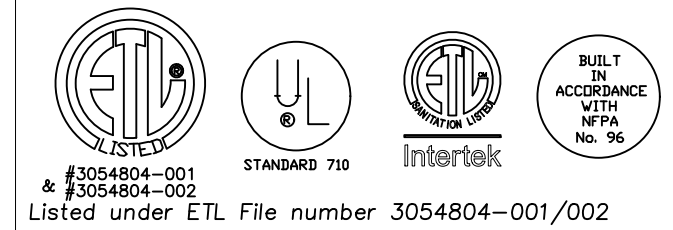
TOTAL DUCT AREA=144 X CFM(FPM*)

DUCT LENGTH= TOTAL DUCT AREA / DUCT DEPTH

*CAPTIVE-AIRE DUCT CONNECTION SIZES ARE CALCULATED USING AN EXHAUST VELOCITY OF 1500-1800 FPM AND A SUPPLY VELOCITY OF 300-400 FPM.

BUILDING CODES

CAPTIVE-AIRE HOODS ARE BUILT IN COMPLIANCE WITH:



Listed under ETL File number 3054804-001/002

CLEARANCE TO COMBUSTIBLES

CAPTIVE-AIRE HOODS HAVE OPTIONAL CLEARANCE REDUCTION SYSTEMS AVAILABLE AS FOLLOWS:

| MATERIAL | CLEARANCE REDUCTION SYSTEM |
|---------------------|----------------------------|
| NON-COMBUSTIBLE | NONE REQUIRED |
| LIMITED-COMBUSTIBLE | 3" UNINSULATED STANDOFF |
| COMBUSTIBLE | 1" INSULATED STANDOFF |

GENERAL NOTES

INSTALLATION

- ALL ELECTRICAL "FIELD" CONNECTIONS AND RELATED INTERCONNECTIONS BY ELECTRICAL CONTRACTORS.
- ALL PLUMBING "FIELD" CONNECTIONS AND RELATED INTERCONNECTIONS BY PLUMBING CONTRACTORS.
- HANGING BRACKETS LOCATED AND WELDED AS SHOWN ON PLANS. ALL OTHER HANGER MATERIALS PROVIDED BY INSTALLING CONTRACTORS.
- ALL CONNECTIONS FROM CAPTIVE-AIRE DUCT PER MECHANICAL CONTRACTOR'S PLANS.
- COOKING EQUIPMENT TO SHUTOFF IN EVENT OF FIRE.
- EXHAUST FANS TO TURN ON IN EVENT OF FIRE.
- ALL LIGHTS FIXTURE SHOWN INSTALLED BY CAPTIVE-AIRE ARE FACTORY PREMIERED INTERCONNECTIONS BETWEEN HOODS AND TO SWITCHES BY ELECTRICAL CONTRACTORS.
- LAMPS FOR LIGHT FIXTURES BY INSTALLING CONTRACTORS.
- SEISMIC RESTRAINTS ARE RESPONSIBILITY OF INSTALLING CONTRACTOR.
- INSTALLING CONTRACTORS ASSUME ALL RELATED RESPONSIBILITY FOR VERIFICATION OF DIMENSIONAL DATA CONTAINED ON THESE DOCUMENTS FOR ACCURACY, INTEGRATION AND ADMINISTRATION OF CODE REQUIREMENTS IN EFFECT PRIOR TO ANY RELEASE FOR PRODUCTION OF EQUIPMENT SHOWN.

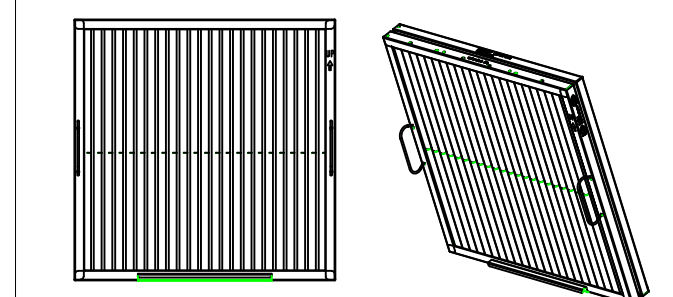
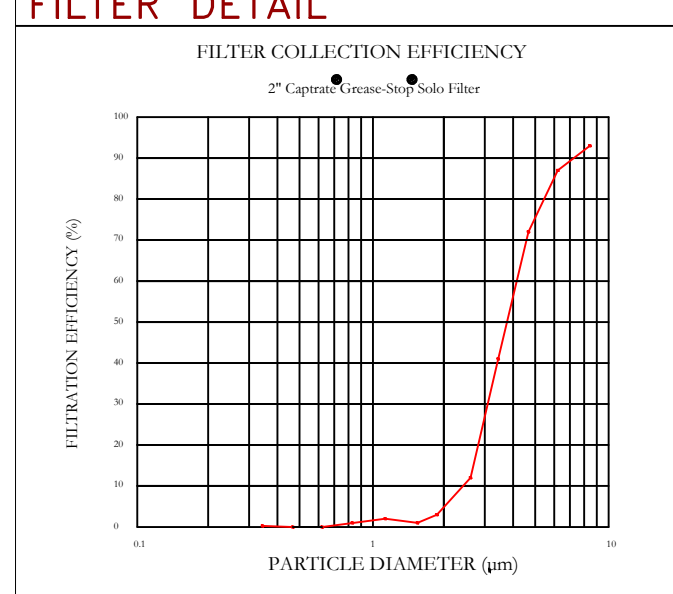
BALANCE

- KITCHEN HOODS MUST BE BALANCED WITH KITCHEN.
- KITCHEN SHALL BE NEGATIVE WITH RESPECT TO DINING AREA.
- RESTAURANT SHALL BE POSITIVE WITH RESPECT TO AMBIENT PRESSURE.

ADDITIONAL

- WRITTEN HOOD DIMENSIONS HAVE PRECEDENCE OVER SCALE.
- SIGNED AND "APPROVED" COPIES OF THIS DOCUMENT MUST BE RECEIVED BY THE FACTORY PRIOR TO COMMENCEMENT OF FABRICATION.

FILTER DETAIL



CaptiveAire Captivate Solo Filter
ETL Listed Grease Extracting Filters
Made From 430 Stainless Steel

HOOD INFORMATION - JOB#5247678

| HOOD NO | TAG | MODEL | MANUFACTURER | LENGTH | MAX COOKING TEMP | TYPE | APPLIANCE DUTY | DESIGN CFM/FT | TOTAL EXH. CFM | EXHAUST PLENUM RISERS(S) | | | | MJA CFM | AC CFM | HOOD CONSTRUCTION | HOOD CONFIG | | |
|---------|----------|-------|--------------|--------|------------------|------|----------------|---------------|----------------|--------------------------|------|--------|------|---------|--------|-------------------|----------------------|-------|-------|
| | | | | | | | | | | WIDTH | LENG | HEIGHT | DIA | | | | CFM | VEL | SP |
| 1 | ITEM 33A | 5424 | CAPTIVEAIRE | 8' 0" | 450 DEG | I | MEDIUM | 200 | 1600 | 4' | 14' | 1600 | 1497 | -0.734" | 1280 | 505 | 430 SS WHERE EXPOSED | ALINE | FRONT |
| 2 | ITEM 33B | 5424 | CAPTIVEAIRE | 5' 0" | 450 DEG | I | MEDIUM | 155 | 775 | 4' | 10' | 775 | 1421 | -0.436" | 620 | 306 | 430 SS WHERE EXPOSED | ALINE | ALONE |

PATENT NUMBERS
AC-PSP (UNITED STATES) - US PATENT 7963830 B2
AC-PSP WALL (CANADA) - CA PATENT 2820509
AC-PSP ISLAND (CANADA) - CA PATENT 2820330

HOOD INFORMATION

| HOOD NO | TAG | TYPE | QTY | FILTER(S) | | EFFICIENCY @ 7 MICRONS | QTY | LIGHT(S) | | UTILITY CABINET(S) | | ELECTRICAL | SWITCHES | FIRE SYSTEM | HOOD HANGING WEIGHT |
|---------|----------|------------------------|-----|-----------|--------|------------------------|-----|----------------|----------|--------------------|-------------|------------|------------------|-------------|---------------------|
| | | | | HEIGHT | LENGTH | | | TYPE | LOCATION | SIZE | TYPE | | | | |
| 1 | ITEM 33A | CAPTIVATE SOLID FILTER | 5 | 16" | 16" | 85% SEE FILTER SPEC. | 2 | RECESSED ROUND | ND | LEFT | 12"x54"x24" | DCV-2111 | 1 LIGHT 1 FAN | ND | 662 LBS |
| 2 | ITEM 33B | CAPTIVATE SOLID FILTER | 3 | 16" | 16" | 85% SEE FILTER SPEC. | 2 | RECESSED ROUND | ND | LEFT | 12"x54"x24" | DCV-2111 | 1 LIGHT 1 FAN | ND | 403 LBS |

HOOD OPTIONS

| HOOD NO | TAG | OPTION |
|---------|----------|---|
| 1 | ITEM 33A | FIELD WRAPPER 1800" HIGH FRONT, LEFT, RIGHT. LEFT QUARTER END PANEL 23" TOP WIDTH, 0" BOTTOM WIDTH, 23" HIGH 430 SS. RIGHT QUARTER END PANEL 23" TOP WIDTH, 0" BOTTOM WIDTH, 23" HIGH 430 SS. FINISHED BACK - GRIND/POLISH 96.00" LONG. RISER SENSOR INSTALL 3IN DBL. |
| 2 | ITEM 33B | FIELD WRAPPER 1800" HIGH FRONT, LEFT, RIGHT. RIGHT END PANEL 27" TOP WIDTH, 24" BOTTOM WIDTH, 39.5" HIGH 430 SS. LEFT QUARTER END PANEL 23" TOP WIDTH, 0" BOTTOM WIDTH, 23" HIGH 430 SS. RISER SENSOR INSTALL 3IN DBL. |

PERFORATED SUPPLY PLENUM(S)

| HOOD NO | TAG | POS | LENGTH | WIDTH | HEIGHT | TYPE | RISERS(S) | | | |
|---------|----------|-------|--------|-------|--------|------|-----------|------|--------|--------|
| | | | | | | | WIDTH | LENG | DIA | |
| 1 | ITEM 33A | Front | 108' | 24' | 6' | MUA | 12" | 256 | 0.084' | |
| | | | | | | | MUA | 12" | 256 | 0.084' |
| | | | | | | | MUA | 12" | 256 | 0.084' |
| | | | | | | | MUA | 12" | 256 | 0.084' |
| | | | | | | | MUA | 12" | 256 | 0.084' |
| | | | | | | | AC | 8" | 101 | 0.033' |
| | | | | | | | AC | 8" | 101 | 0.033' |
| | | | | | | | AC | 8" | 101 | 0.033' |
| | | | | | | | AC | 8" | 101 | 0.033' |
| | | | | | | | AC | 8" | 101 | 0.033' |
| 2 | ITEM 33B | Front | 60' | 22' | 6' | MUA | 10" | 154 | 0.046' | |
| | | | | | | | MUA | 10" | 154 | 0.046' |
| | | | | | | | MUA | 10" | 154 | 0.046' |
| | | | | | | | MUA | 10" | 154 | 0.046' |
| | | | | | | | AC | 8" | 102 | 0.033' |
| | | | | | | | AC | 8" | 102 | 0.033' |
| | | | | | | | AC | 8" | 102 | 0.033' |
| | | | | | | | AC | 8" | 102 | 0.033' |
| | | | | | | | AC | 8" | 102 | 0.033' |
| | | | | | | | AC | 8" | 102 | 0.033' |

SPECIFICATION: CAPTIVATE GREASE-STOP SOLID FILTER

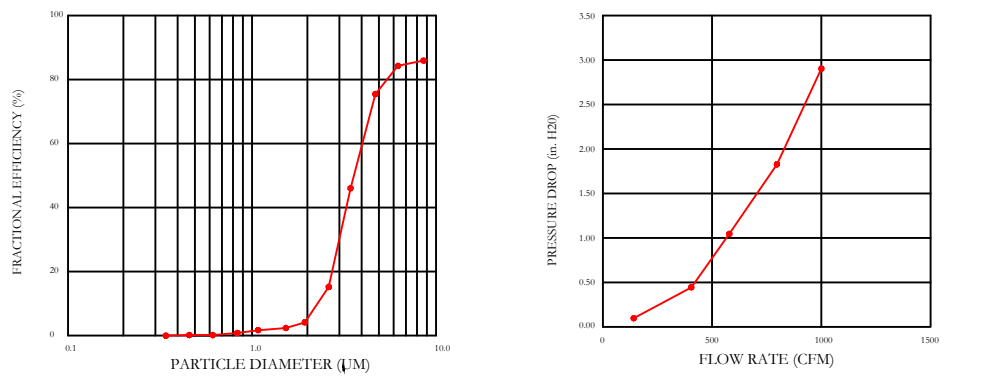
THE CAPTIVATE GREASE-STOP SOLID FILTER IS A SINGLE-STAGE FILTER FEATURING A UNIQUE S-BAFFLE DESIGN IN CONJUNCTION WITH A SLOTTED REAR BAFFLE DESIGN TO DELIVER EXCEPTIONAL FILTRATION EFFICIENCY.

FILTER IS STAINLESS STEEL CONSTRUCTION, AND SIZED TO FIT INTO STANDARD 2-INCH DEEP HOOD CHANNEL(S).

UNITS SHALL INCLUDE STAINLESS STEEL HANDLES AND A FASTENING DEVICE TO SECURE THE TWO COMPONENTS WHEN ASSEMBLED.

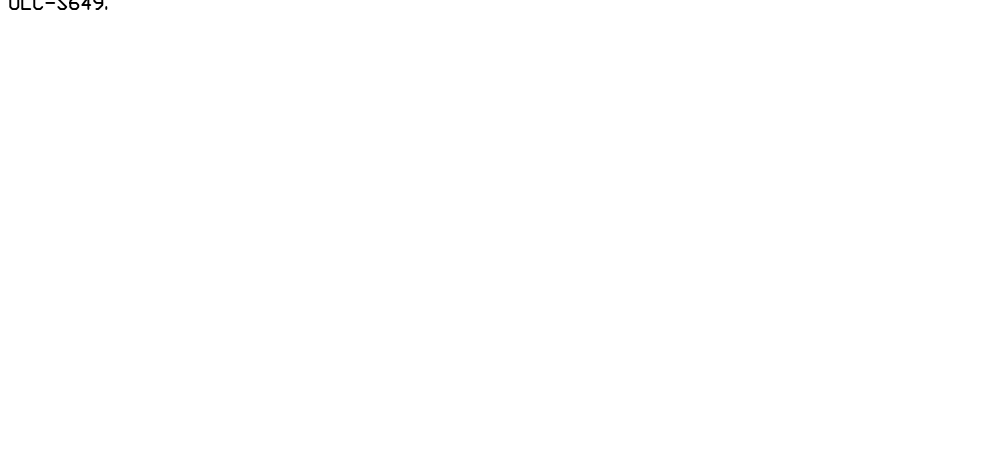
GREASE EXTRACTION EFFICIENCY PERFORMANCE SHALL REMOVE AT LEAST 70% OF GREASE PARTICLES FIVE MICRONS IN SIZE, AND 85% GREASE PARTICLES SEVEN MICRONS IN SIZE AND LARGER, WITH A CORRESPONDING PRESSURE DROP NOT TO EXCEED 10 INCHES OF WATER GAUGE.

THE CAPTIVATE GREASE-STOP SOLID WAS TESTED TO ASTM STANDARD ASTM F209-05. MANUFACTURER APPROVED FOR USE IN SOLID FUEL APPLICATIONS AS A SPARK ARRESTER.

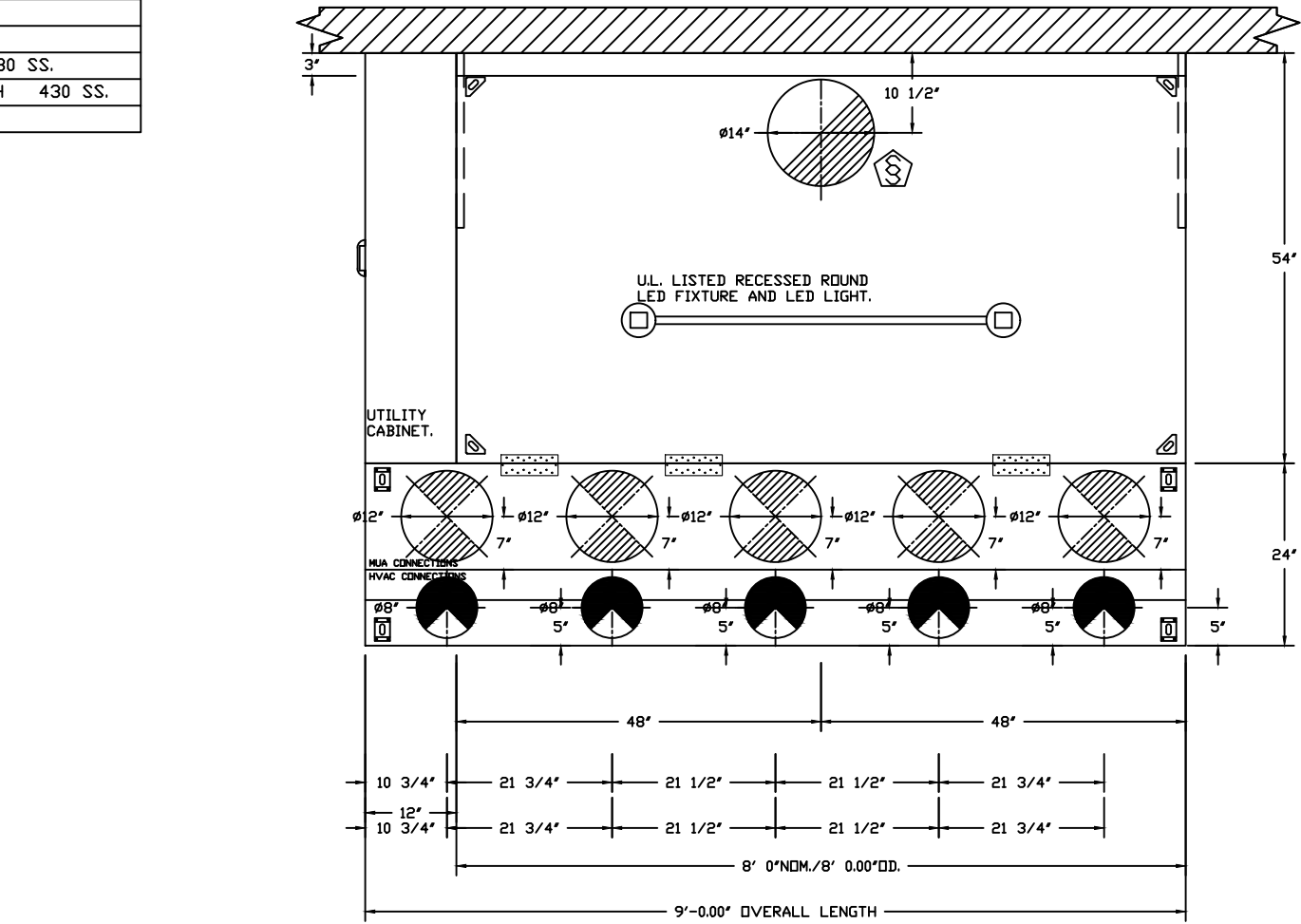


CAPTIVATE FILTERS ARE BUILT IN COMPLIANCE WITH:

- NSF #96
- NFPA #96
- UL STANDARD #946
- INT. MECH. CODE (IMC)
- ULC-S649



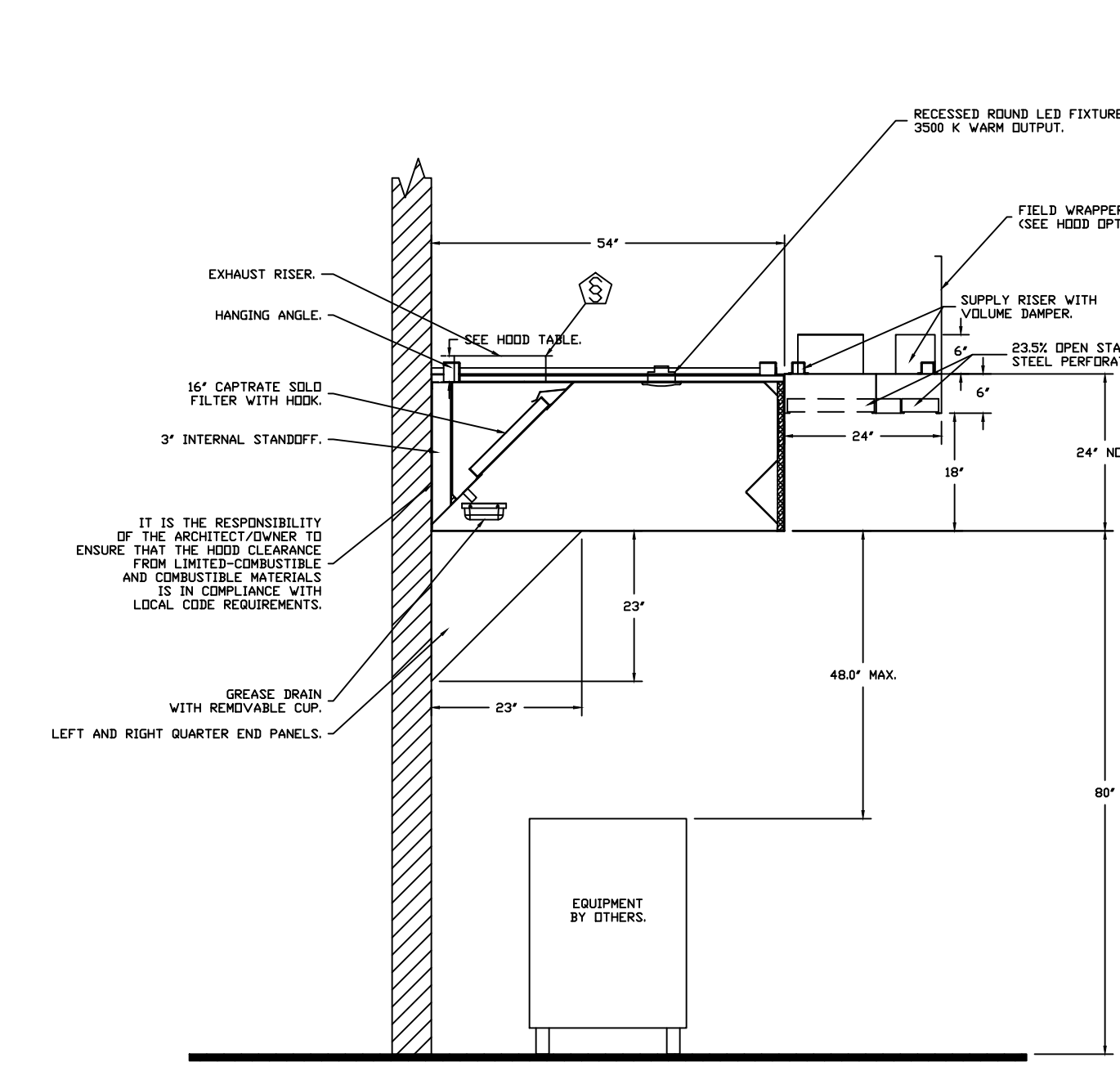
IT IS THE RESPONSIBILITY OF THE ARCHITECT/OWNER TO ENSURE THAT THE HOOD CLEARANCE FROM LIMITED-COMBUSTIBLE AND COMBUSTIBLE MATERIALS IS IN COMPLIANCE WITH LOCAL CODE REQUIREMENTS.



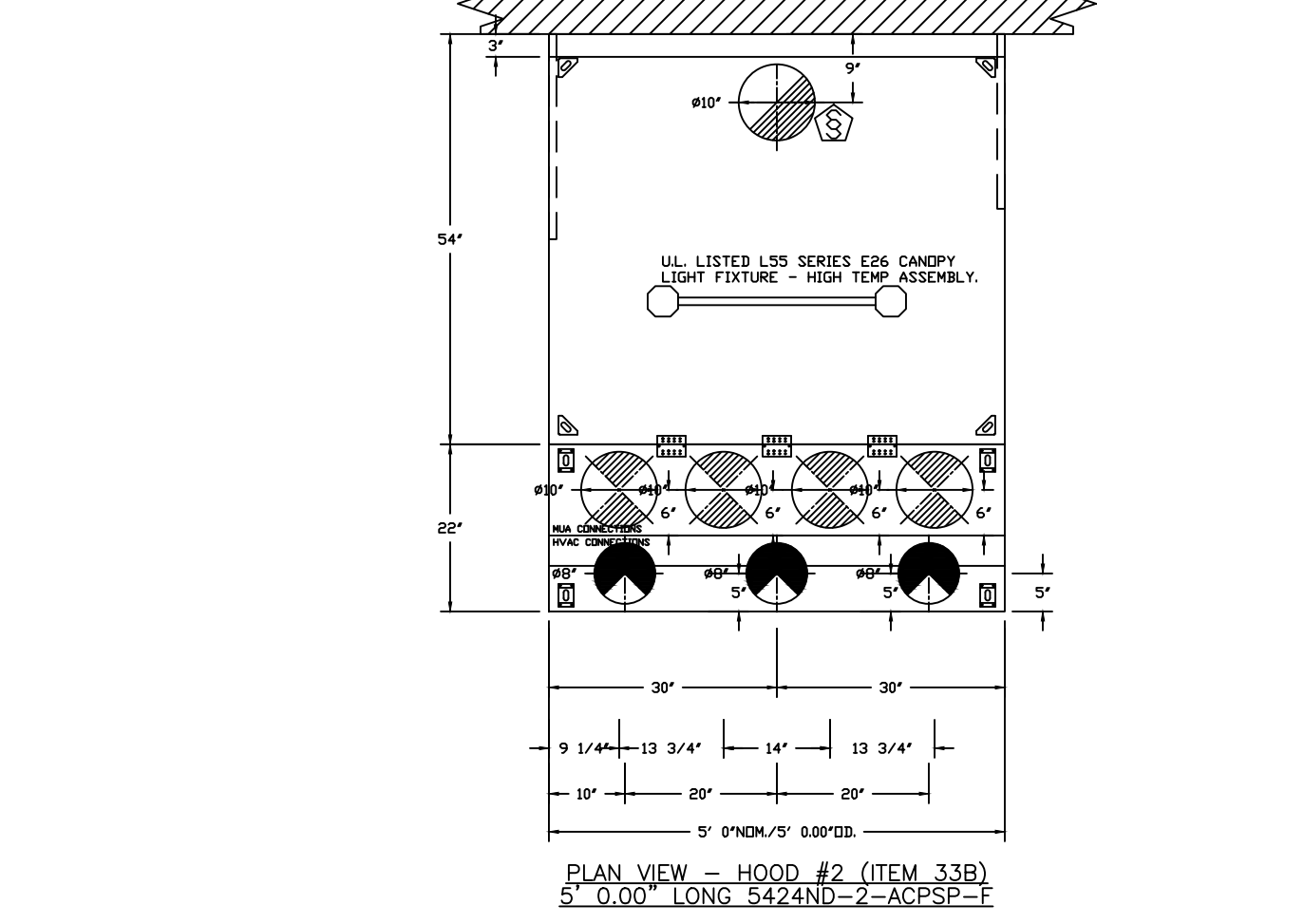
PLAN VIEW - HOOD #1 (ITEM 33A)
8' 0.00\"/>

ACPSP SHIPS LOOSE FOR FIELD INSTALLATION

ACPSP SHIPS LOOSE FOR FIELD INSTALLATION



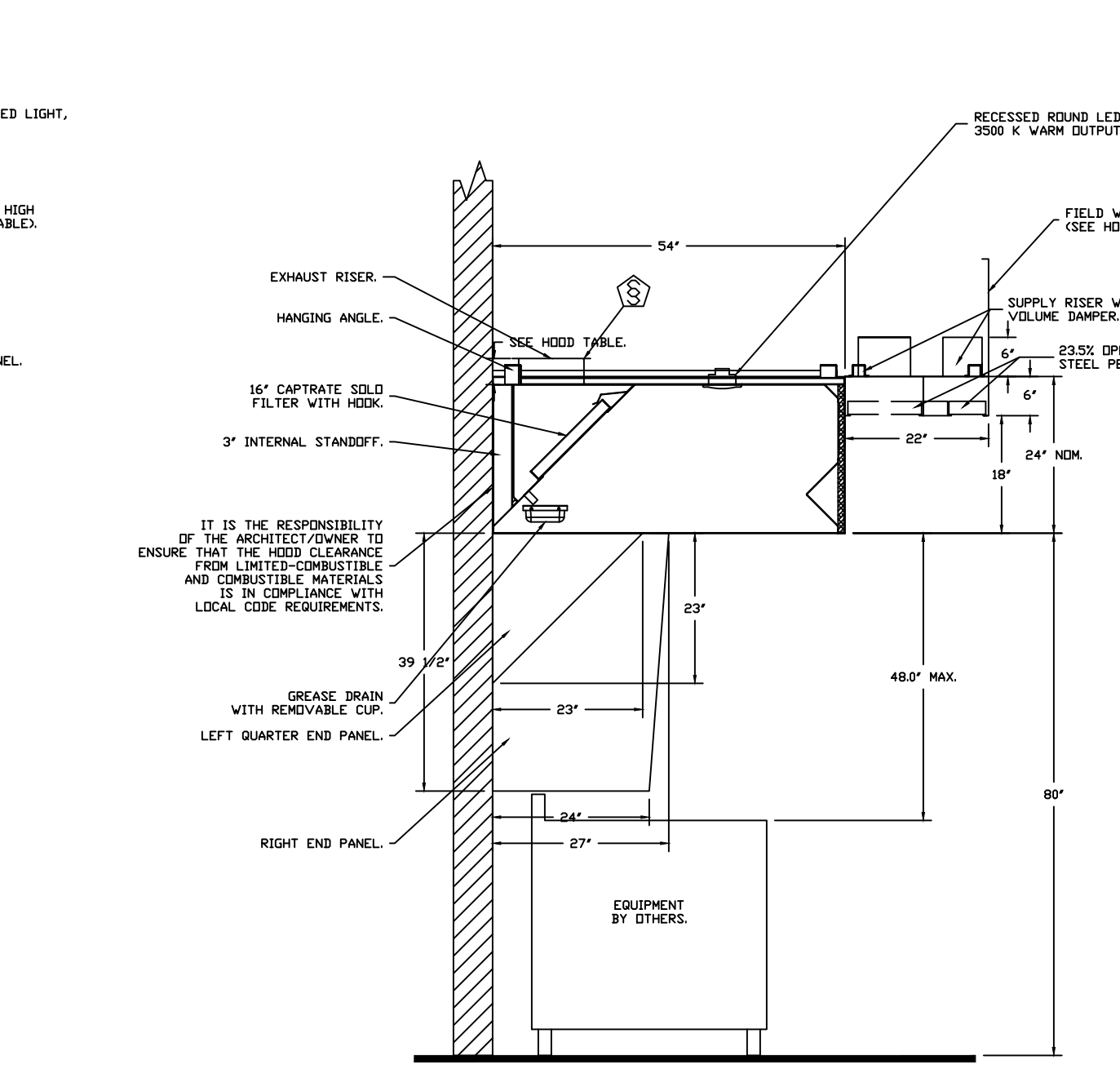
SECTION VIEW - MODEL 5424ND-2-ACPSP-F HOOD - #1 (ITEM 33A)



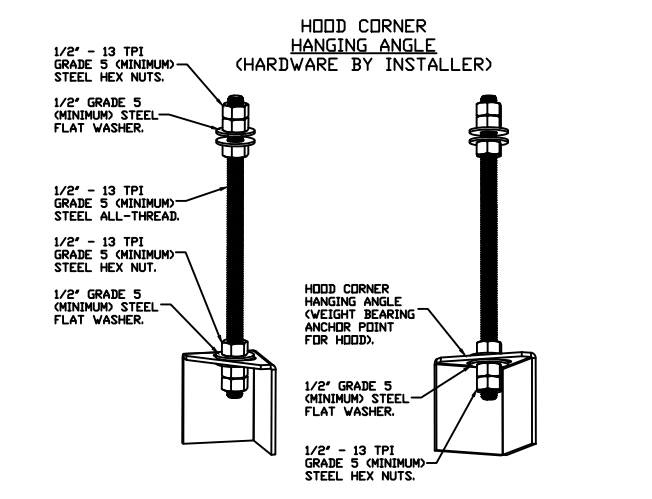
PLAN VIEW - HOOD #2 (ITEM 33B)
5' 0.00\"/>

ACPSP SHIPS LOOSE FOR FIELD INSTALLATION

ACPSP SHIPS LOOSE FOR FIELD INSTALLATION

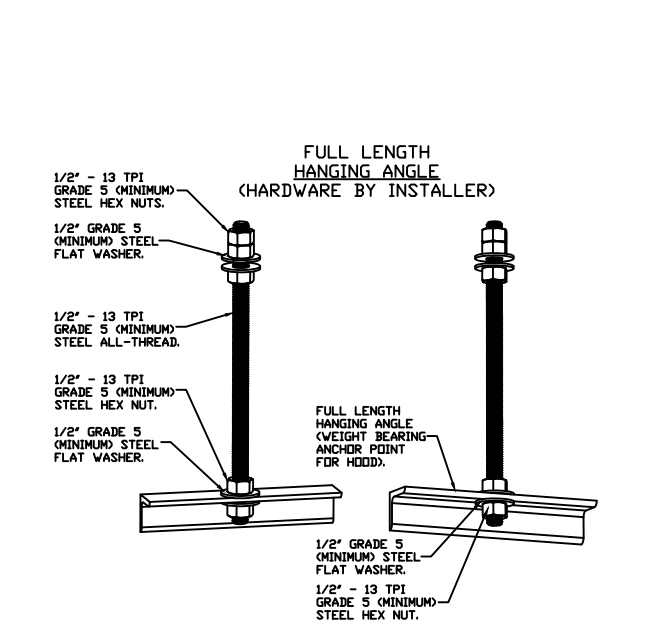


SECTION VIEW - MODEL 5424ND-2-ACPSP-F HOOD - #2 (ITEM 33B)



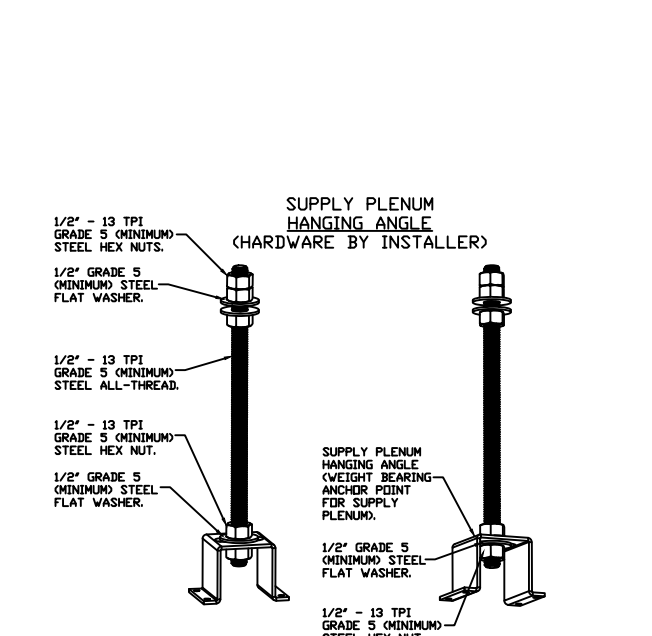
ASSEMBLY INSTRUCTIONS

HANGING ANGLE MUST BE SUPPORTED WITH 1/2\"/>



ASSEMBLY INSTRUCTIONS

HANGING ANGLE MUST BE SUPPORTED WITH 1/2\"/>

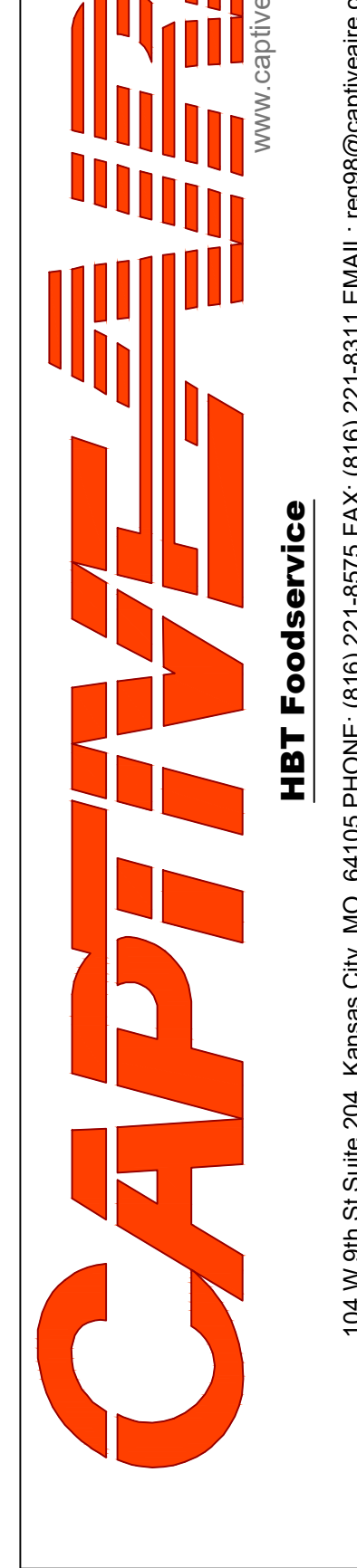


ASSEMBLY INSTRUCTIONS

HANGING ANGLE MUST BE SUPPORTED WITH 1/2\"/>

REVISIONS

| DESCRIPTION | DATE |
|-------------|------|
| | |
| | |
| | |



Freddy's - Tower Rd (Aur...)
DENVER, CO, 80249
FOR: TRIMARK HOCKENBERGS

DATE: 12/27/2021

DWG.#: 5247678

DRAWN BY: michael.co

SCALE: 1/2" = 1'-0"

MASTER DRAWING

SHEET NO. 1

SYSTEM DESIGN VERIFICATION (SDV)

IF ORDERED, CAS SERVICE WILL PERFORM A SYSTEM DESIGN VERIFICATION (SDV) ONCE ALL EQUIPMENT HAS HAD A COMPLETE START UP PER THE OPERATION AND INSTALLATION MANUAL. TYPICALLY, THE SDV WILL BE PERFORMED AFTER ALL INSPECTIONS ARE COMPLETE.

ANY FIELD RELATED DISCREPANCIES THAT ARE DISCOVERED DURING THE SDV WILL BE BROUGHT TO THE ATTENTION OF THE GENERAL CONTRACTOR AND CORRESPONDING TRADES ON SITE. THESE ISSUES WILL BE DOCUMENTED AND FORWARDED TO THE APPROPRIATE SALES OFFICE. IF CAS SERVICE HAS TO RESOLVE A DISCREPANCY THAT IS A FIELD ISSUE, THE GENERAL CONTRACTOR WILL BE NOTIFIED AND BILLED FOR THE WORK. SHOULD A RETURN TRIP BE REQUIRED DUE TO ANY FIELD RELATED DISCREPANCY THAT CANNOT BE RESOLVED DURING THE SDV, THERE WILL BE ADDITIONAL TRIP CHARGES.

DURING THE SDV, CAS SERVICE WILL ADDRESS ANY DISCREPANCY THAT IS THE FAULT OF THE MANUFACTURER. SHOULD A RETURN TRIP BE REQUIRED, THE GENERAL CONTRACTOR AND APPROPRIATE SALES OFFICE WILL BE NOTIFIED. THERE WILL BE NO ADDITIONAL CHARGES FOR MANUFACTURER DISCREPANCIES.

FOR QUESTIONS, CALL THE:
KANSAS CITY REGIONAL OFFICE
1126 SWIFT STREET, KANSAS CITY, MO 64116
PHONE: (816) 221-8575
FAX: (816) 221-8311

CUSTOMER APPROVAL TO MANUFACTURE:

Approved as Noted

Approved with ND Exception Taken

Revise and Resubmit

SIGNATURE _____ DATE _____

Your Title _____

***** NOTE *****
ALL WALLS AND STRUCTURES THAT COME WITHIN 18" OF HOOD MUST BE METAL STUDS AND SHEETROCK. WOOD STUDS OR ANY OTHER COMBUSTIBLE MATERIAL WITHIN 18" OF HOOD NO ALLOWED.

***** NOTE *****
HOOD MANUFACTURER RECOMMENDS NO RETURNS OR 4-WAY DIFFUSERS WITHIN 10 FEET OF HOOD IN ALL DIRECTION.

***** NOTE *****
MAKEUP AIR SHALL BE DELIVERED INTO SPACE IN MANNER THAT WILL NOT DISRUPT HOODS ABILITY TO CAPTURE AND CONTAIN.

EXHAUST FAN INFORMATION - JOB#5247678

| FAN UNIT NO | TAG | QTY | FAN UNIT MODEL # | MANUFACTURER | CFM | ESP | RPM | MOTOR ENCL | HP | BHP | PHASE | VOLT | FLA | DISCHARGE VELOCITY | WEIGHT (LBS) | SIZES |
|-------------|------|-----|------------------|--------------|------|------|------|------------|-------|--------|-------|------|------|--------------------|--------------|-------|
| 1 | EF-1 | 1 | DUSHF4 | CAPTIVEAIRE | 1600 | 1200 | 1441 | TEAD-ECM | 1.000 | 0.4800 | 1 | 115 | 11.6 | 506 FPM | 130 | 14.3 |
| 2 | EF-2 | 1 | DUSHF4 | CAPTIVEAIRE | 775 | 1250 | 1656 | TEAD-ECM | 0.500 | 0.4160 | 1 | 115 | 6.3 | 295 FPM | 105 | 19.1 |

MUA FAN INFORMATION - JOB#5247678

| FAN UNIT NO | TAG | QTY | FAN UNIT MODEL # | BLDWR | HOUSING | MIN CFM | DESIGN CFM | ESP | RPM | MOTOR ENCL | HP | BHP | PHASE | VOLT | FLA | MCA | MDCP | EVAP FLOW RATE (Gal/Hr) | EVAP COOLER ENTERING WB TEMP | EVAP COOLER LEAVING WB TEMP | EVAP COOLER LEAVING DB TEMP | EVAP COOLER LEAVING WB TEMP | WEIGHT (LBS) | SIZES |
|-------------|--------|-----|------------------|-----------|---------|---------|------------|-------|------|-------------|-------|--------|-------|------|-----|-------|------|-------------------------|------------------------------|-----------------------------|-----------------------------|-----------------------------|--------------|-------|
| 3 | HMUA-1 | 1 | AI-D250-15D | 15WF-1-MD | AI-D250 | 1000 | 1900 | 0.500 | 2430 | DDP-PREMIUM | 3.000 | 1.8010 | 3 | 208 | 8.6 | 10.8A | 15A | 3.28 | 91.0°F | 60.0°F | 72.0°F | 60.0°F | 622 | 27 |

GAS FIRED MAKE-UP AIR UNIT(S)

| FAN UNIT NO | TAG | QTY | INPUT BTUS | OUTPUT BTUS | TEMP RISE | REQUIRED INPUT GAS PRESSURE | GAS TYPE | BURNER EFFICIENCY(%) |
|-------------|--------|-----|------------|-------------|-----------|-----------------------------|----------|----------------------|
| 3 | HMUA-1 | 1 | 136886 | 125935 | 75°F | 7 IN. W.C. - 14 IN. W.C. | NATURAL | 92 |

FAN OPTIONS

| FAN UNIT NO | TAG | QTY | DESCRIPTION |
|-------------|--------|-----|--|
| 1 | EF-1 | 1 | GREASE BOX |
| | | 1 | UPBLAST FAN WHEEL ACCESS PORT |
| | | 1 | FAN BASE CERAMIC SEAL - INSTALLED AT PLANT - FOR GREASE DUCTS |
| | | 1 | 36" TALL STRAIGHT WIND BAND EXTENSION 15 (SHIPS LOOSE) |
| 2 | EF-2 | 1 | ECM WIRING PACKAGE - PWM SIGNAL FROM ECM03 PREWIRE (TELCD MOTOR), CCW ROTATION |
| | | 1 | 2 YEAR PARTS WARRANTY |
| | | 1 | GREASE BOX |
| | | 1 | UPBLAST FAN WHEEL ACCESS PORT |
| 3 | HMUA-1 | 1 | FAN BASE CERAMIC SEAL - INSTALLED AT PLANT - FOR GREASE DUCTS |
| | | 1 | ECM WIRING PACKAGE - PWM SIGNAL FROM ECM03 PREWIRE (TELCD MOTOR), CCW ROTATION |
| | | 1 | 36" TALL STRAIGHT WIND BAND EXTENSION 13 (SHIPS LOOSE) |
| | | 1 | 2 YEAR PARTS WARRANTY |
| | | 1 | MOTORIZED BACKDRAFT DAMPER FOR AI-D HOUSING - MEETS AMCA CLASS 1A RATING |
| | | 1 | LDW FIRE START |
| | | 1 | INLET PRESSURE GAUGE, 0-35" |
| | | 1 | MANIFOLD PRESSURE GAUGE, -5 TO 15" WC |
| | | 1 | SEPARATE 120V WIRING PACKAGE (REQUIRED AND USED ONLY FOR DCV OR PREWIRE WITH VFD) - THREE PHASE ONLY |
| | | 1 | FREESTAT PROTECTION DRINK KIT FOR IBT/MUA WITH EVAPORATIVE COOLERS |
| | | 1 | FREESTAT |
| | | 1 | 2 YEAR PARTS WARRANTY |

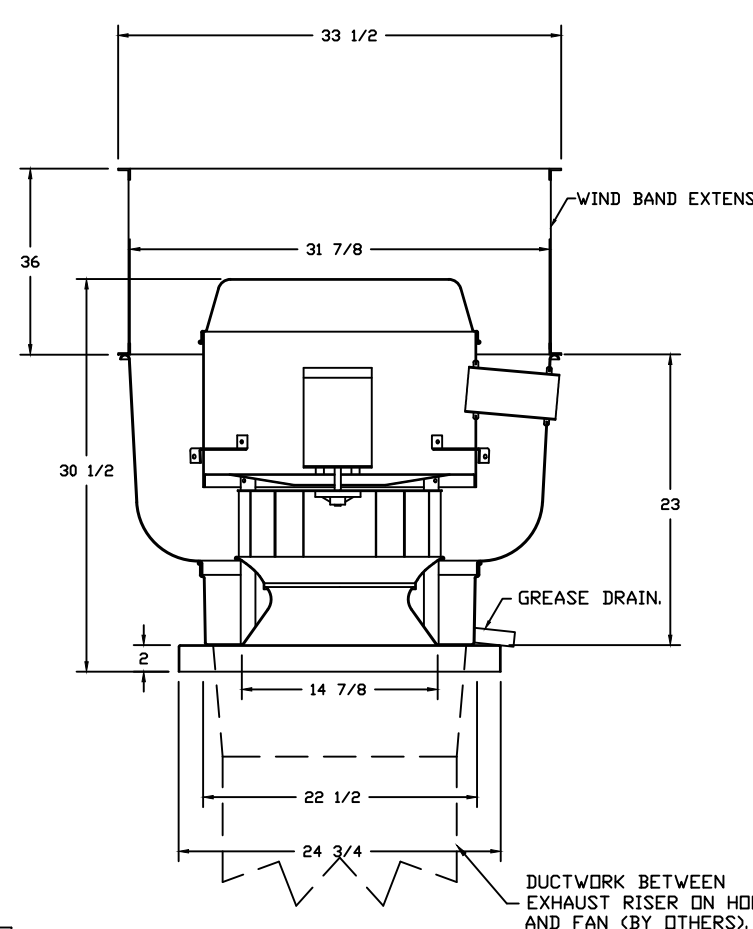
FAN ACCESSORIES

| FAN UNIT NO | TAG | EXHAUST | SUPPLY |
|-------------|--------|---------|--------|
| 1 | EF-1 | YES | |
| 2 | EF-2 | YES | |
| 3 | HMUA-1 | | YES |

CURB ASSEMBLIES

| NO | IN FAN | TAG | WEIGHT | ITEM | SIZE |
|----|--------|--------|--------|------|---|
| 1 | # 1 | EF-1 | 36 LBS | CURB | 23.000"W X 23.000"L X 20.000"H ALONG LENGTH, RIGHT VENTED HINGED. |
| 2 | # 2 | EF-2 | 31 LBS | CURB | 19.500"W X 19.500"L X 20.000"H ALONG LENGTH, RIGHT VENTED HINGED. |
| 3 | # 3 | HMUA-1 | 75 LBS | CURB | 21.000"W X 71.000"L X 20.000"H ALONG WIDTH, RIGHT INSULATED. |
| | # 3 | | | RAIL | 4.000"W X 4.000"L X 36.000"H |

FAN #1 DUSHF4 - EXHAUST FAN (EF-1)



FEATURES:

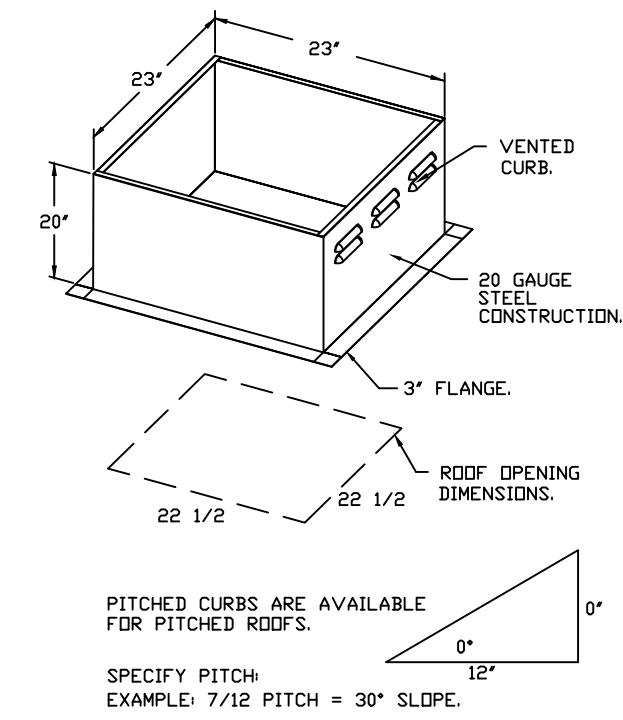
- DIRECT DRIVE CONSTRUCTION (NO BELTS/PULLEYS).
- RESTAURANT MODEL.
- UL705 AND UL762 AND ULC-S645
- VARIABLE SPEED CONTROL.
- INTERNAL WIRING.
- THERMAL OVERLOAD PROTECTION (SINGLE PHASE).
- HIGH HEAT OPERATION 300°F (149°C).
- GREASE CLASSIFICATION TESTING.
- NEMA 3R SAFETY DISCONNECT SWITCH.

NORMAL TEMPERATURE TEST
EXHAUST FAN MUST OPERATE CONTINUOUSLY WHILE EXHAUSTING AIR AT 300°F (149°C) UNTIL ALL FAN PARTS HAVE REACHED THERMAL EQUILIBRIUM, AND WITHOUT ANY DETRIMENTAL EFFECTS TO THE FAN WHICH WOULD CAUSE UNSAFE OPERATION.

ABNORMAL FLARE-UP TEST
EXHAUST FAN MUST OPERATE CONTINUOUSLY WHILE EXHAUSTING BURNING GREASE VAPORS AT 600°F (316°C) FOR A PERIOD OF 15 MINUTES WITHOUT THE FAN BECOMING DAMAGED TO ANY EXTENT THAT COULD CAUSE AN UNSAFE CONDITION.

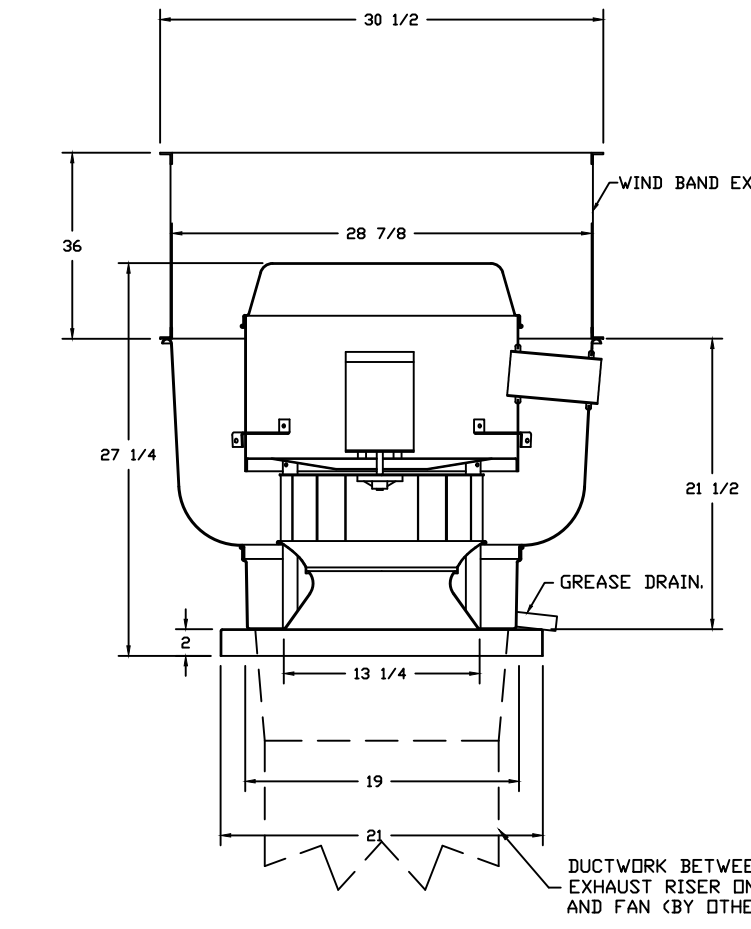
OPTIONS

- GREASE BOX.
- UPBLAST FAN WHEEL ACCESS PORT.
- FAN BASE CERAMIC SEAL - INSTALLED AT PLANT - FOR GREASE DUCTS.
- 36" TALL STRAIGHT WIND BAND EXTENSION 15 (SHIPS LOOSE).
- ECM WIRING PACKAGE - PWM SIGNAL FROM ECM03 PREWIRE (TELCD MOTOR), CCW ROTATION.
- 2 YEAR PARTS WARRANTY.



PITCHED CURBS ARE AVAILABLE FOR PITCHED ROOFS.
SPECIFY PITCH: EXAMPLE: 7/12 PITCH = 30° SLOPE.

FAN #2 DUSHF4 - EXHAUST FAN (EF-2)



FEATURES:

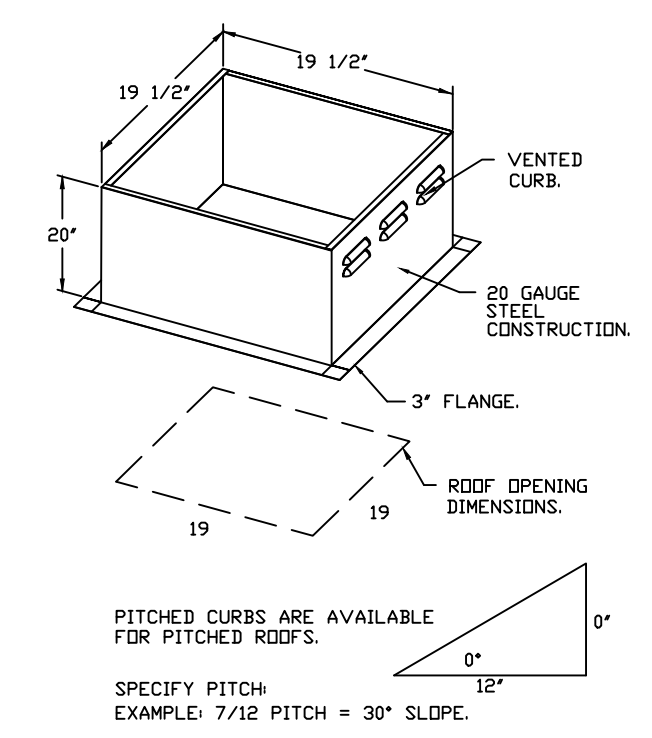
- DIRECT DRIVE CONSTRUCTION (NO BELTS/PULLEYS).
- RESTAURANT MODEL.
- UL705 AND UL762 AND ULC-S645
- VARIABLE SPEED CONTROL.
- INTERNAL WIRING.
- THERMAL OVERLOAD PROTECTION (SINGLE PHASE).
- HIGH HEAT OPERATION 300°F (149°C).
- GREASE CLASSIFICATION TESTING.
- NEMA 3R SAFETY DISCONNECT SWITCH.

NORMAL TEMPERATURE TEST
EXHAUST FAN MUST OPERATE CONTINUOUSLY WHILE EXHAUSTING AIR AT 300°F (149°C) UNTIL ALL FAN PARTS HAVE REACHED THERMAL EQUILIBRIUM, AND WITHOUT ANY DETRIMENTAL EFFECTS TO THE FAN WHICH WOULD CAUSE UNSAFE OPERATION.

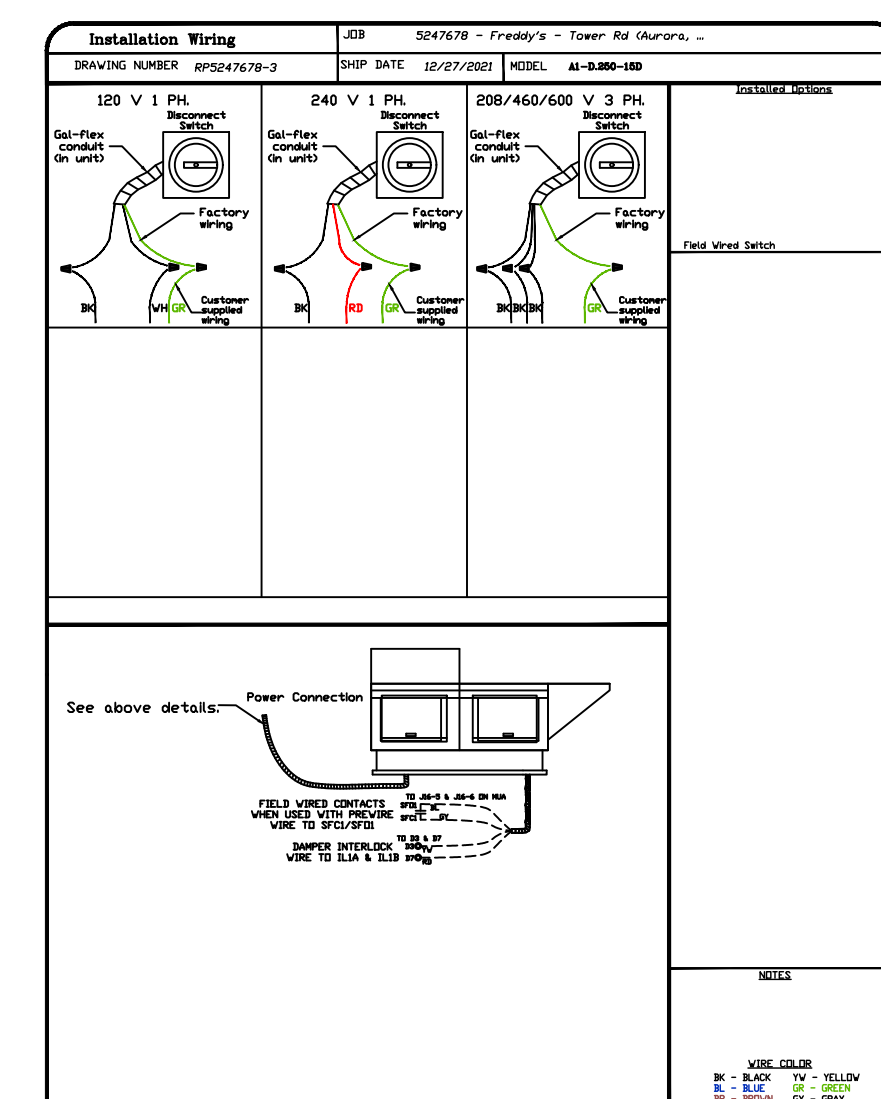
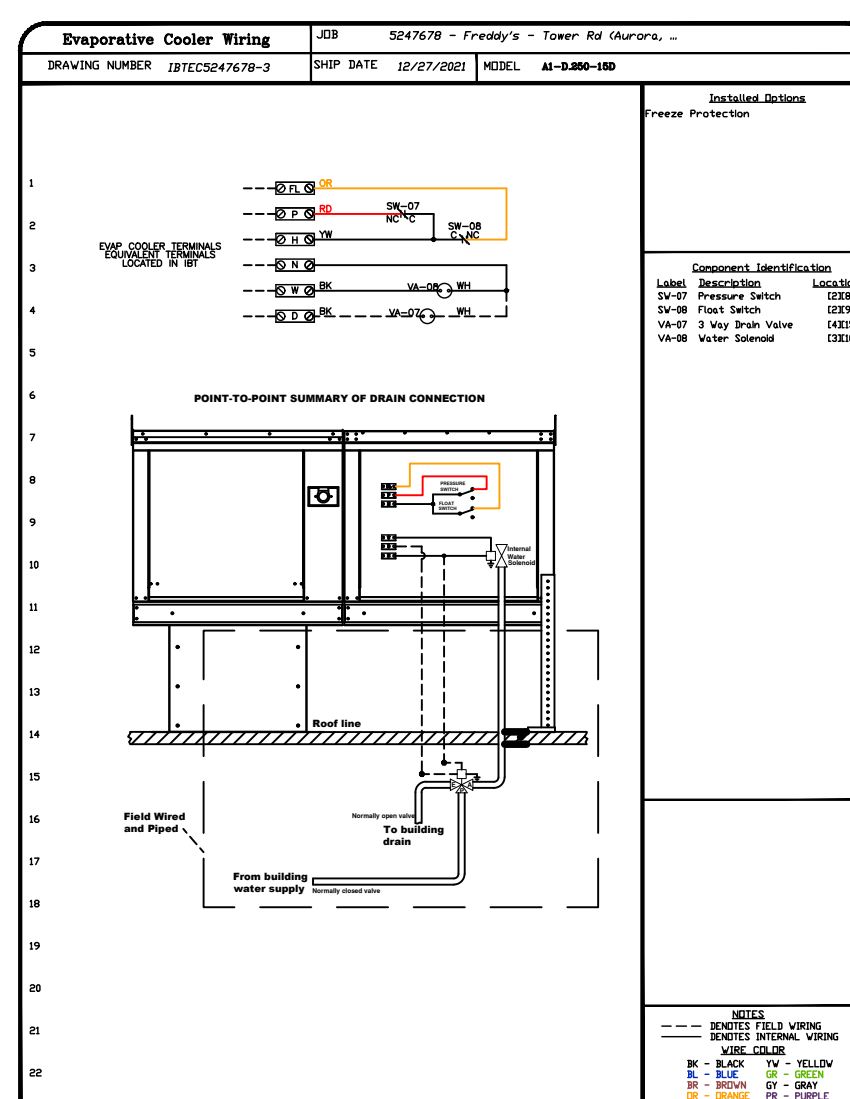
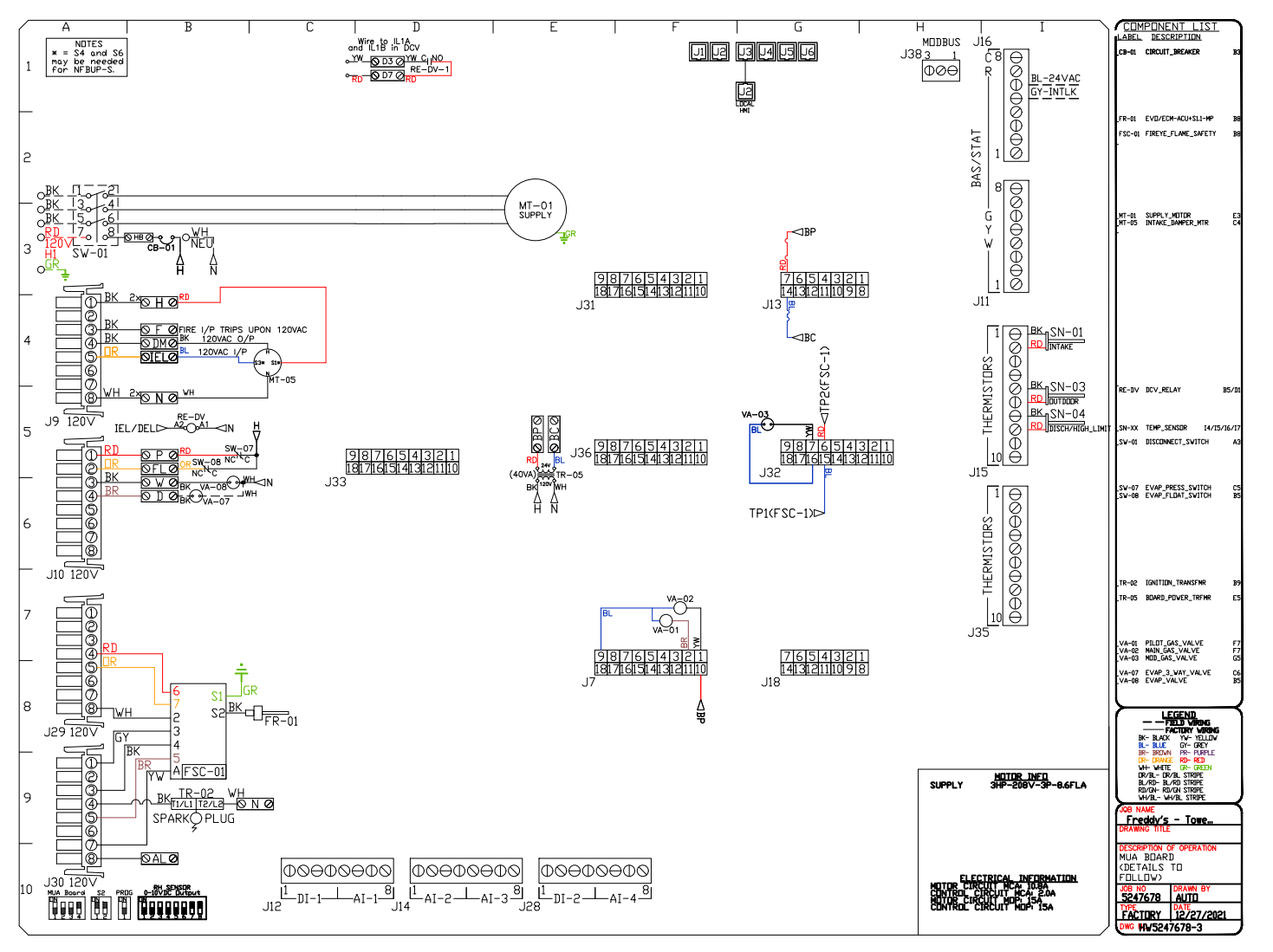
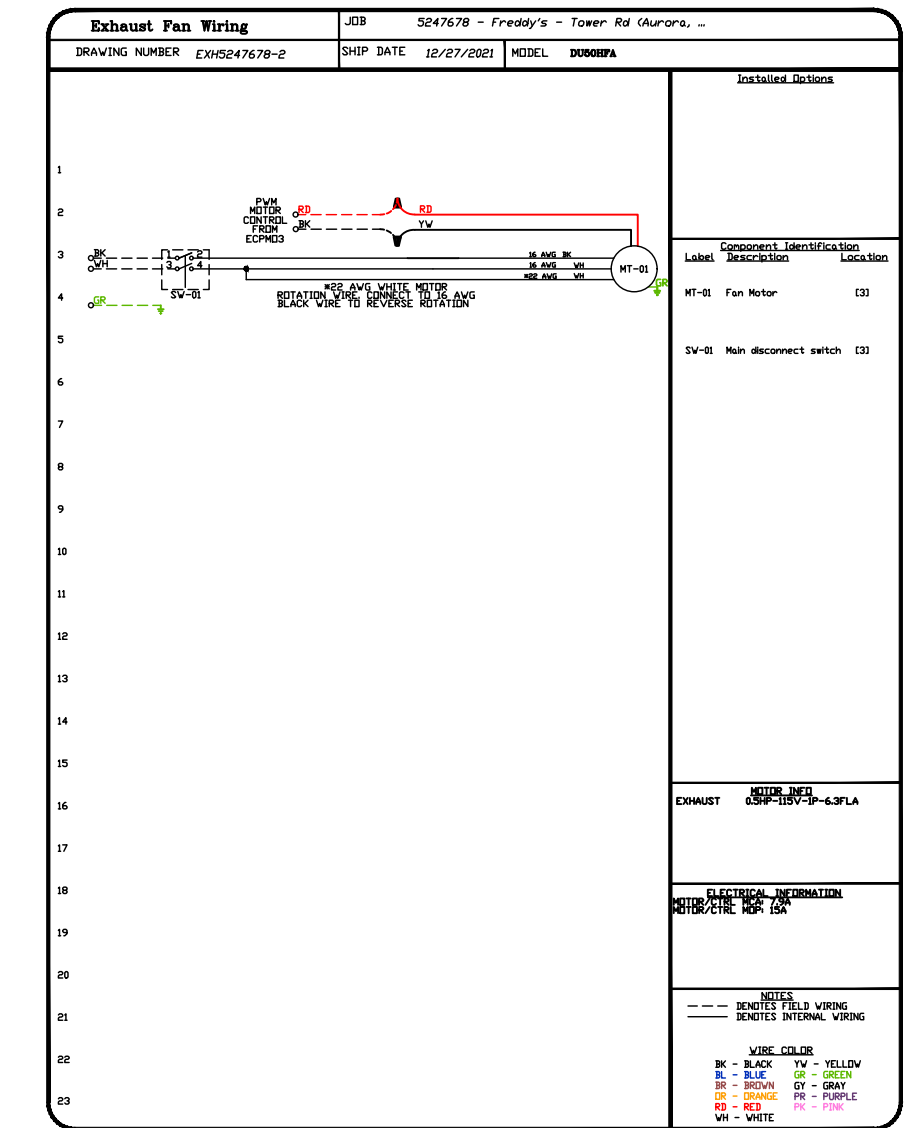
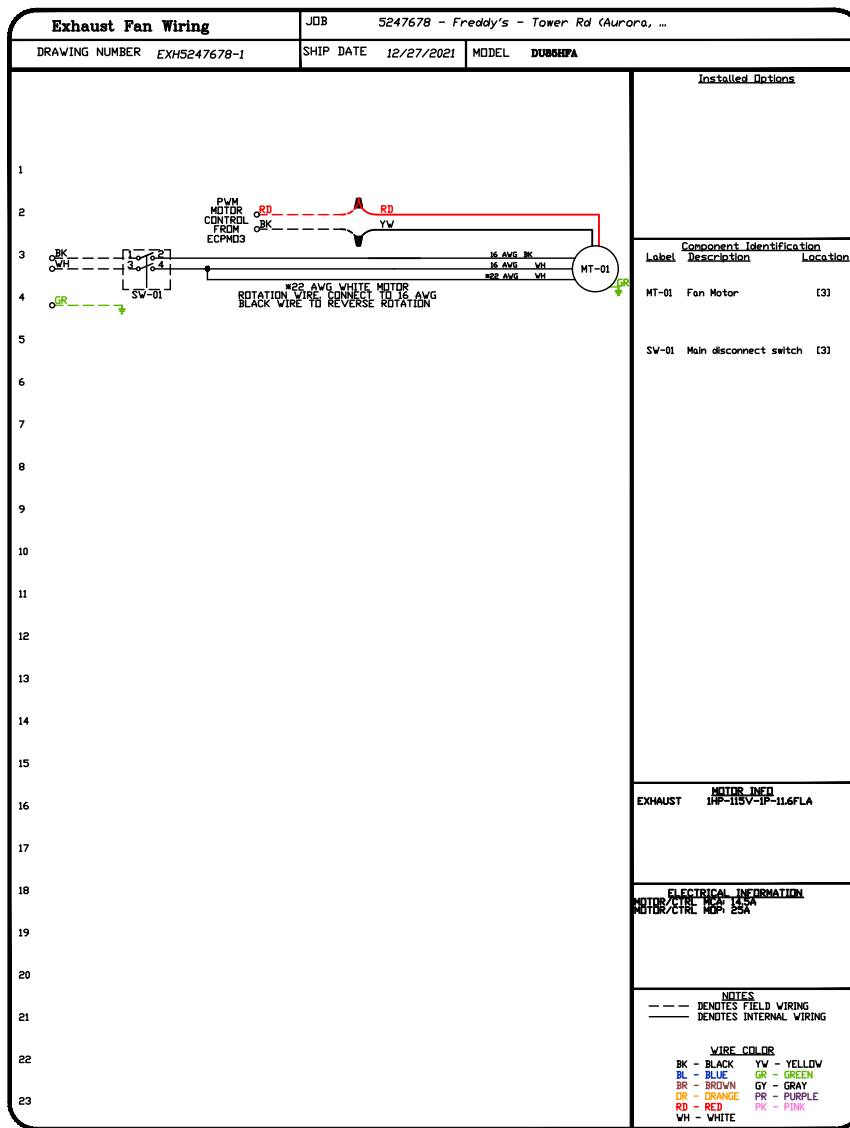
ABNORMAL FLARE-UP TEST
EXHAUST FAN MUST OPERATE CONTINUOUSLY WHILE EXHAUSTING BURNING GREASE VAPORS AT 600°F (316°C) FOR A PERIOD OF 15 MINUTES WITHOUT THE FAN BECOMING DAMAGED TO ANY EXTENT THAT COULD CAUSE AN UNSAFE CONDITION.

OPTIONS

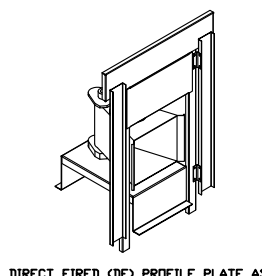
- GREASE BOX.
- UPBLAST FAN WHEEL ACCESS PORT.
- FAN BASE CERAMIC SEAL - INSTALLED AT PLANT - FOR GREASE DUCTS.
- ECM WIRING PACKAGE - PWM SIGNAL FROM ECM03 PREWIRE (TELCD MOTOR), CCW ROTATION.
- 36" TALL STRAIGHT WIND BAND EXTENSION 13 (SHIPS LOOSE).
- 2 YEAR PARTS WARRANTY.



PITCHED CURBS ARE AVAILABLE FOR PITCHED ROOFS.
SPECIFY PITCH: EXAMPLE: 7/12 PITCH = 30° SLOPE.



NOTE: SUPPLY DUCT MUST BE INSTALLED TO MEET SMACNA STANDARDS. A MINIMUM STRAIGHT DUCT LENGTH MUST BE MAINTAINED DOWNSTREAM OF UNIT DISCHARGE AS OUTLINED IN AMCA PUBLICATION 200. WHEN USING RECTANGULAR DUCTWORK, ELBOWS MUST BE RADIUS THROAT, RADIUS BACK WITH TURNING VANES. FLEXIBLE DUCTWORK AND SQUARE THROAT/SQUARE BACK ELBOWS SHOULD NOT BE USED. ANY TRANSITION AND/OR TURNS IN THE DUCTWORK WILL CAUSE SYSTEM EFFECT. SYSTEM EFFECT WILL DRAMATICALLY INCREASE STATIC PRESSURE AND REDUCE AIRFLOW. DO NOT RELY ON UNIT TO SUPPORT DUCT IN ANY WAY. FAILURE TO PROPERLY SIZE DUCTWORK MAY CAUSE SYSTEM EFFECTS AND REDUCE PERFORMANCE OF THE EQUIPMENT. SUGGESTED STRAIGHT DUCT SIZE IS 14" X 14".

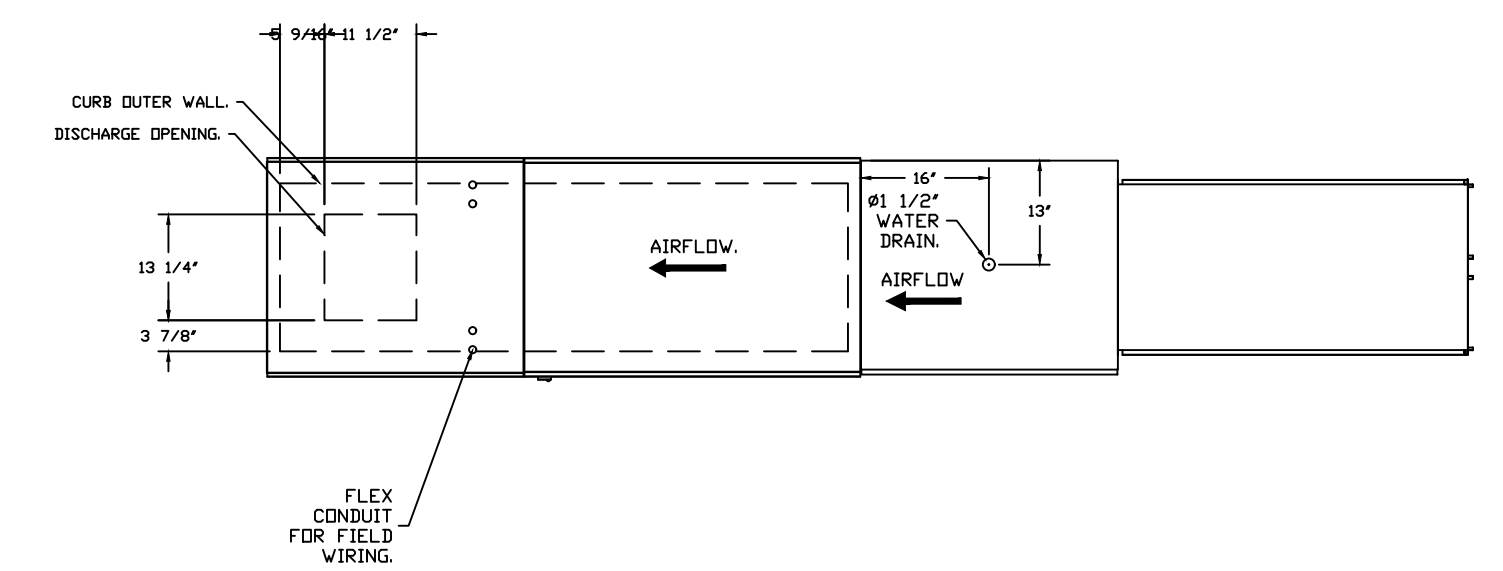


DIRECT FIRED GAS PROFILE PLATE ASSEMBLY

DESCRIPTION:
DIRECT FIRED BURNERS SHALL HAVE PATENT NO. 6,000,000. SELF-HEATING PROFILE PLATES SHALL BE POWERED BY GAS VELOCITY AND PRESSURE DROP ACROSS THE BURNER. PROFILE PLATES SHALL BE MADE OF 304 STAINLESS STEEL. PROFILE PLATES SHALL BE 1/2" THICK AND 1/2" WIDE. PROFILE PLATES SHALL BE 1/2" APART. PROFILE PLATES SHALL BE 1/2" APART. PROFILE PLATES SHALL BE 1/2" APART. PROFILE PLATES SHALL BE 1/2" APART.

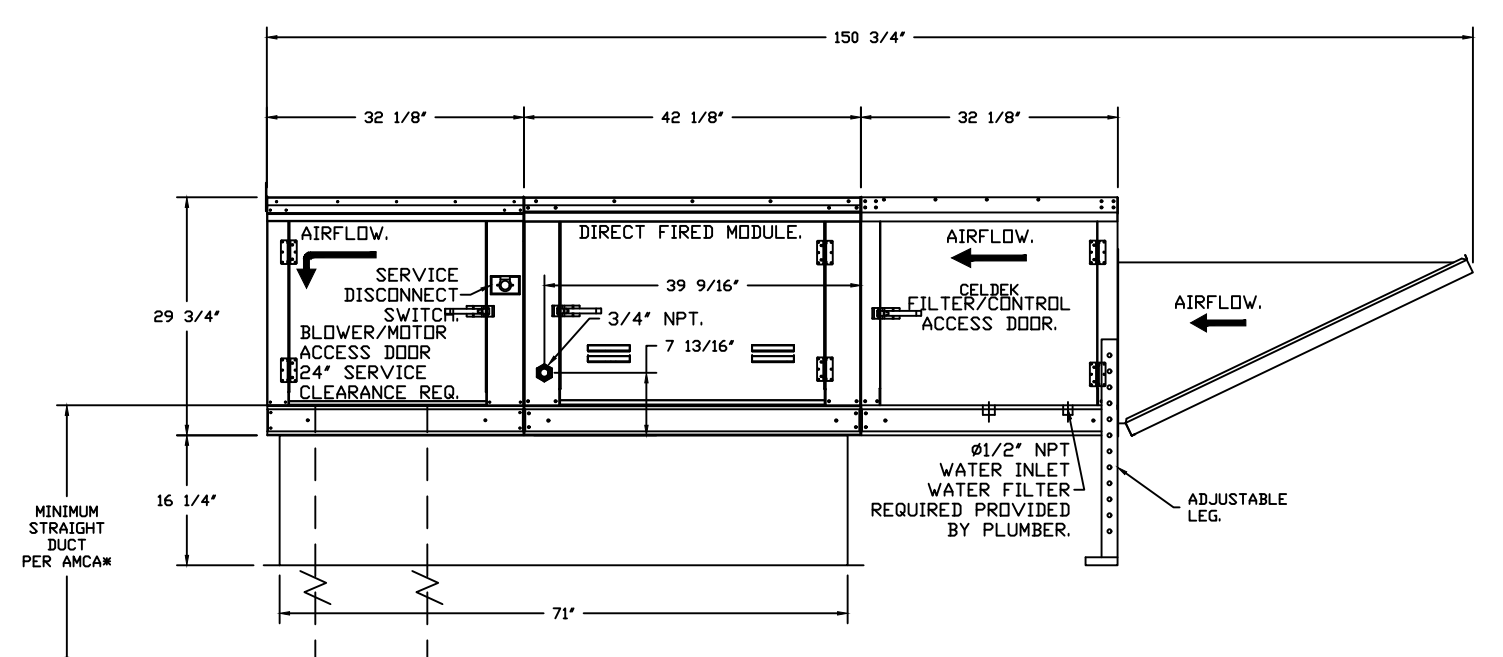
INSTALLATION:
ALL PROFILE PLATE ASSEMBLIES SHALL BE INSTALLED TO MEET SMACNA STANDARDS AND COMPLY WITH COMPRESSOR SAFETY STANDARDS AND 2014 AND 2015 INTERNATIONAL MECHANICAL CODES (IMC) REGULATIONS OF HEATERS.

GENERAL CONSTRUCTION:
- PROFILE PLATES SHALL BE FORMED FROM 304 GALVANIZED STEEL.
- PROFILE PLATES SHALL BE MOUNTED ALONG THE SAME PLANE AS THE DISCHARGE OF THE BURNER.
- SPRING HINGES SHALL BE MADE FROM PLATED STEEL.



SUPPLY SIDE HEATER INFORMATION

WATER TEMPERATURE = 39°F. TEMP. RISE = 75°F.
BTUS CALCULATED OFF ACTUAL AIR DENSITY.
OUTPUT BTUS AT ALTITUDE OF 60 FT. = 151389.
INPUT BTUS AT ALTITUDE OF 60 FT. = 164853.
OUTPUT BTUS AT ALTITUDE OF 3006 FT. = 129935.
INPUT BTUS AT ALTITUDE OF 3006 FT. = 136886.



REVISIONS

| NO. | DESCRIPTION | DATE |
|-----|-------------|------|
| | | |
| | | |
| | | |



Freddy's - Tower Rd (Aur...)
DENVER, CO, 80249
FOR: TRIMARK HOCKENBERG

DATE: 12/27/2021
DWG.#: 5247678
DRAWN BY: michael.co
SCALE: 1/2" = 1'-0"
MASTER DRAWING
SHEET NO. 2

