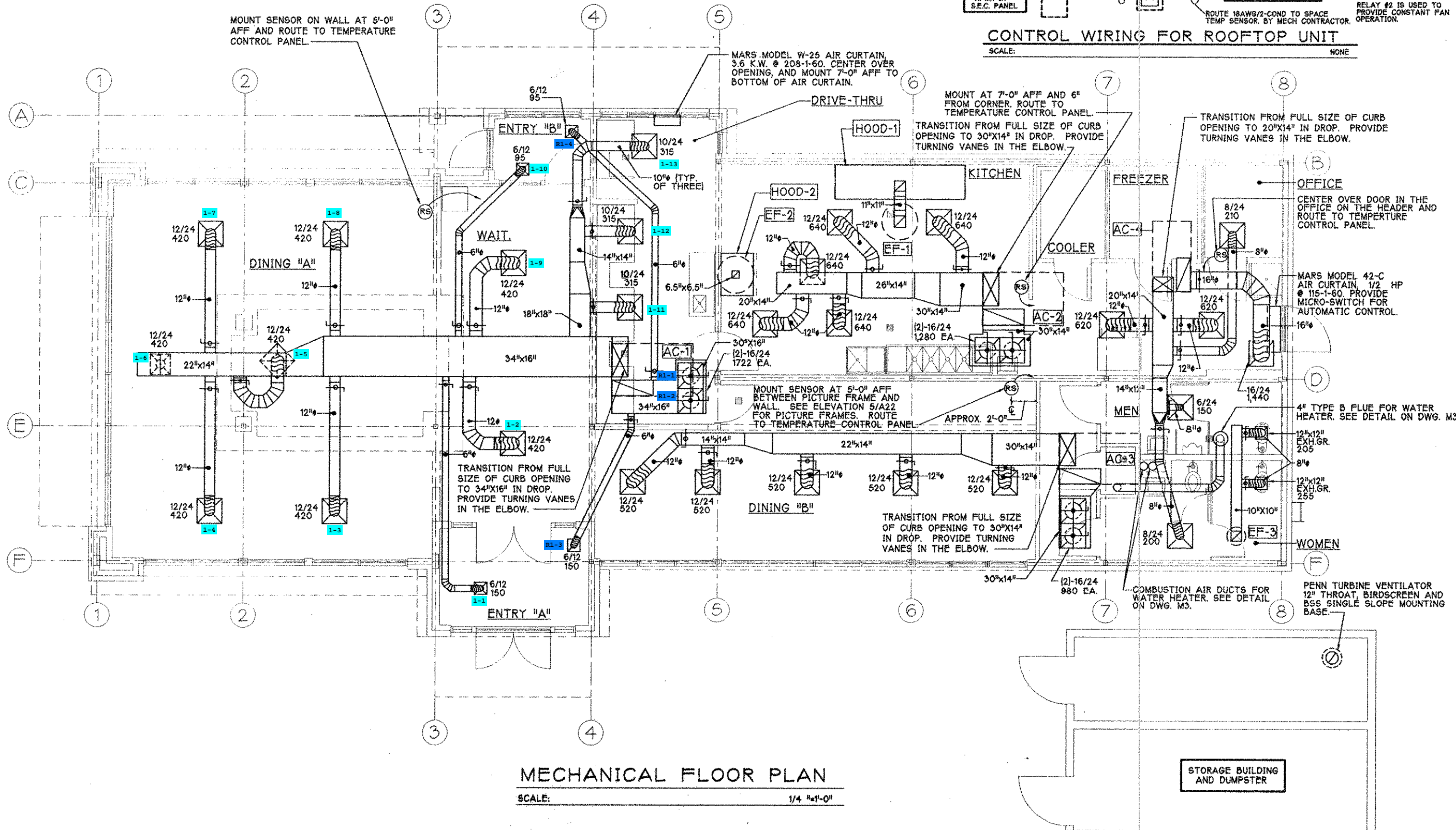
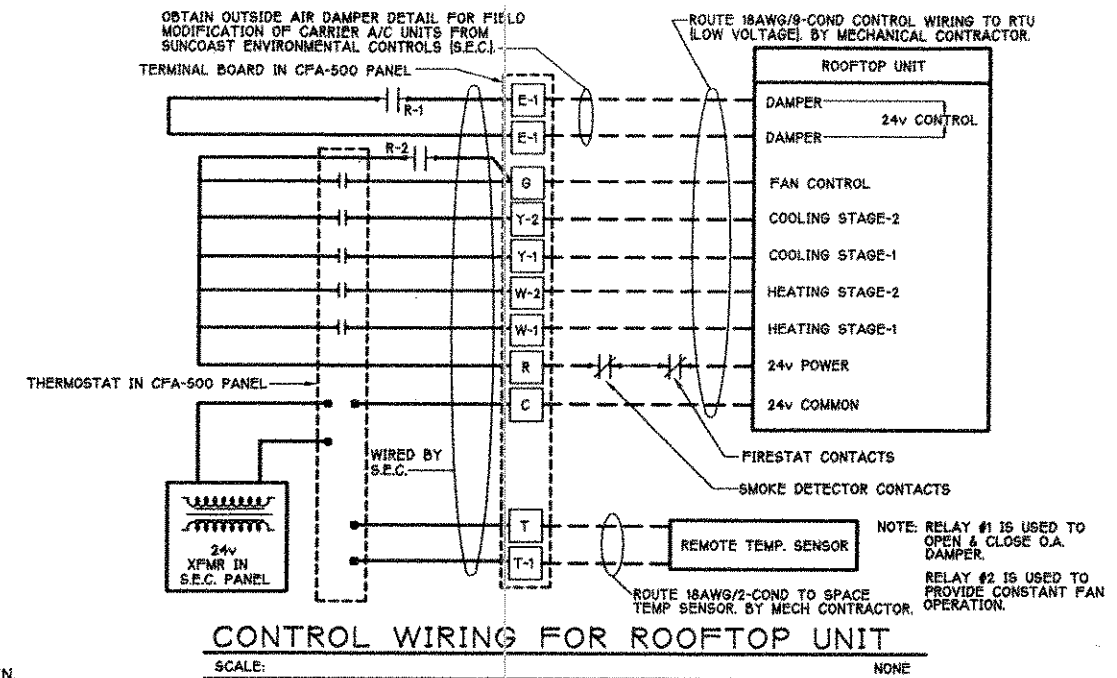


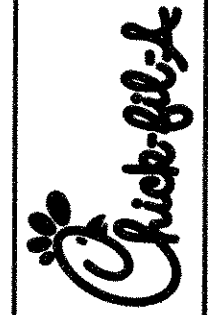


LEGEND			
12/24 435	NECK SIZE / FACE SIZE (INCHES SQ.) CFM (TYP.)	EF-1	EXHAUST FAN #1 (TYP.)
12"x12" EXH.GR. 225	FACE SIZE (TYP. EXHAUST ONLY) EXHAUST GRILLE (TYP.) CFM (TYP.)	AC-1	AIR CONDITIONING UNIT #1 (TYP.)
⊖	MANUAL BALANCING DAMPER	□	RETURN/EXHAUST (TYP.)
⊙	REMOTE TEMPERATURE SENSOR	⊗	SUPPLY DIFFUSER (TYP.)
⌋	FLEXIBLE DUCT NECK ONLY (TYP.)		

AIR BALANCE SCHEDULE	
AIR TYPE	TOTAL CFM
SUPPLY	12,750
RETURN	10,249
EXHAUST	2,475
OUTSIDE AIR	2,501
BUILDING POSITIVE PRESSURE	+26



Series 100  
5200 Buffington Road  
Atlanta, Georgia 30349-2998  
Telephone 404-765-8000



Cleveland Avenue  
East Point, Georgia

Edition Date: December 1, 1996  
Project Date: December 17, 1996  
# Date Revision

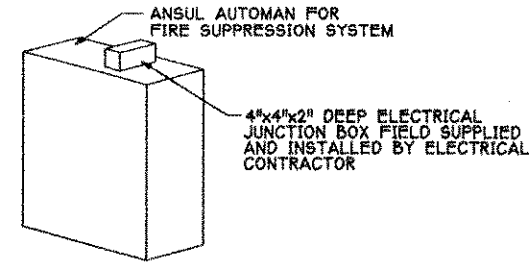
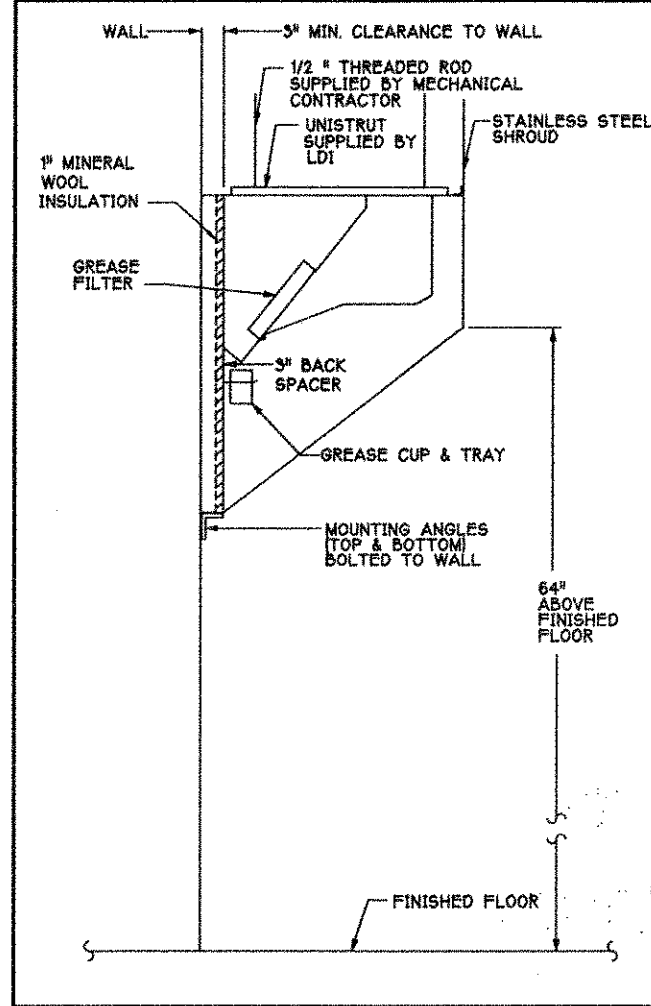
Sheet Title Mechanical Floor Plan

M1

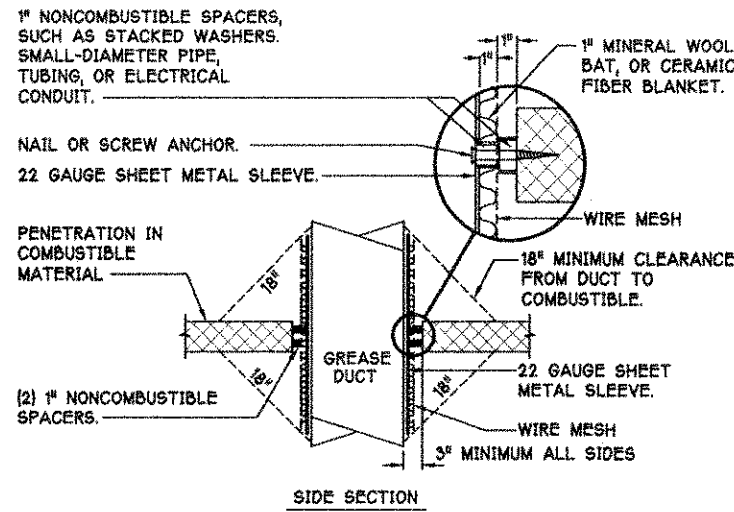
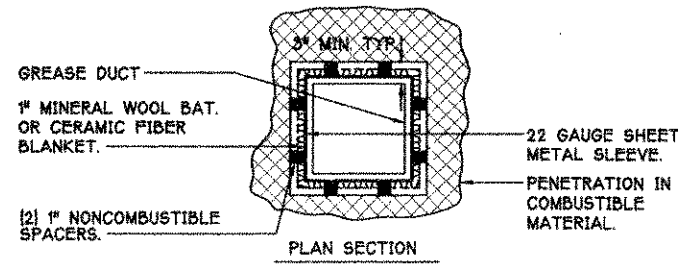
**NOTES**

- REFER TO PART 2 CONTROLS OF THE MECHANICAL SPECIFICATIONS FOR DIFFERENTIATION BETWEEN CONTROL AND POWER WIRING RESPONSIBILITIES.
- ANY CONTACTORS OR WIRING REQUIRED FOR SHUT-OFF OF ELECTRIC COOKING EQUIPMENT SHALL BE FURNISHED BY ELECTRICAL CONTRACTOR.
- ALL ROOF CURBS SHALL BE SHIMMED LEVEL.
- ROOF CURBS FOR EXHAUST SYSTEMS SHALL BE INSTALLED ACCORDING TO THE "NATIONAL ROOFING CONTRACTORS ASSOCIATION" AND ROOFING MATERIAL SUPPLIER'S DETAILS AND GUIDELINES FOR THE SPECIFIC ROOFING MATERIALS USED. ALL CURB INSULATION SHALL BE SUPPLIED AND INSTALLED BY ROOFING CONTRACTOR.
- GENERAL CONTRACTOR SHALL PROVIDE ALL ROOFCUT OPENINGS AND OTHER STRUCTURAL REQUIREMENTS FOR THE INSTALLATION OF ALL EQUIPMENT. ALL ROOFCUT DIMENSIONS ARE TAKEN FROM INSIDE FACE OF PARAPET WALLS UNLESS NOTED OTHERWISE. GENERAL CONTRACTOR SHALL VERIFY ALL DIMENSIONS BEFORE OPENINGS ARE CUT.
- FIRE EXTINGUISHING SYSTEM SHALL BE INSTALLED ACCORDING TO LDI MFG CO SHOP DRAWINGS. SEE SHOP DRAWINGS FOR RESPONSIBILITIES OF CONTRACTOR.
- FIRE SUPPRESSION SYSTEM SHALL CONSIST OF COMPLETE (WET) ANSUL EQUIPMENT FOR HOODS #1 & #2 AND SHALL BE FURNISHED BY LDI MFG. CO. COMPONENTS AND INSTALLATION SHALL MEET THE REQUIREMENTS OF NFPA-96, NFPA-17A, R-102 AND APPLICABLE CODES AND STANDARDS.
- OUTLETS OF EXHAUST FANS SHALL BE AT LEAST 40 INCHES ABOVE ROOF LINE.
- EXHAUST FAN DISCHARGE (EDGE TO EDGE) SHALL BE LOCATED A MIN. OF 40" FROM PARAPET WALL.
- EXHAUST FANS SHALL BE LOCATED A MINIMUM OF 10 FEET (EDGE TO EDGE) FROM ANY FRESH AIR INTAKE.
- HOOD EXHAUST DUCTWORK SHALL BE 16 GA. BLACK STEEL WITH CONTINUOUS LIQUID TIGHT WELD OF JOINTS & SEAMS.
- HOODS AND ASSOCIATED DUCTWORK SHALL BE INSTALLED PER NFPA 96.
- ALL STAINLESS STEEL SHROUDS SHALL BE SUPPLIED BY HOOD MANUFACTURER AND INSTALLED BY CONTRACTOR ACCORDING TO MANUFACTURER'S RECOMMENDATIONS.
- HOODS, FANS, AND ACCESS DOOR SHALL BE LISTED BY UNDERWRITERS LABORATORIES INC.

**SIDE VIEW OF HOOD**



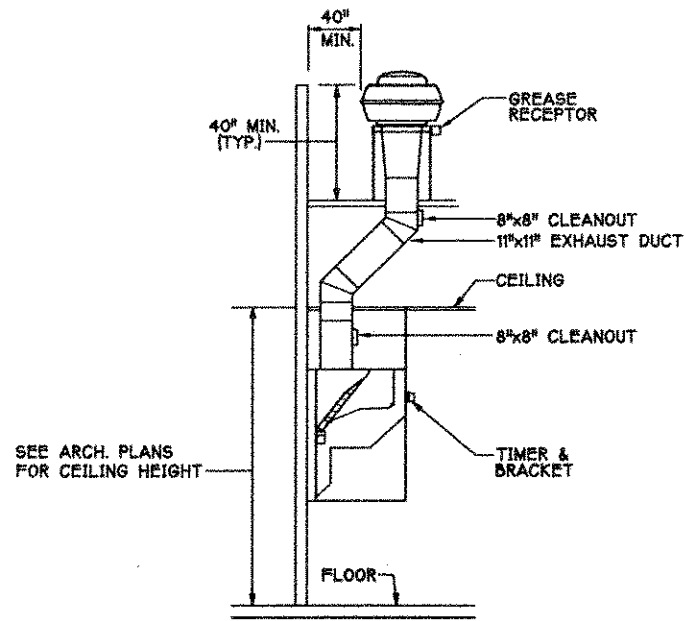
**ANSUL AUTOMAN DETAIL**  
SCALE: NONE



**GREASE EXHAUST DUCTWORK CLEARANCES**  
SCALE: NONE

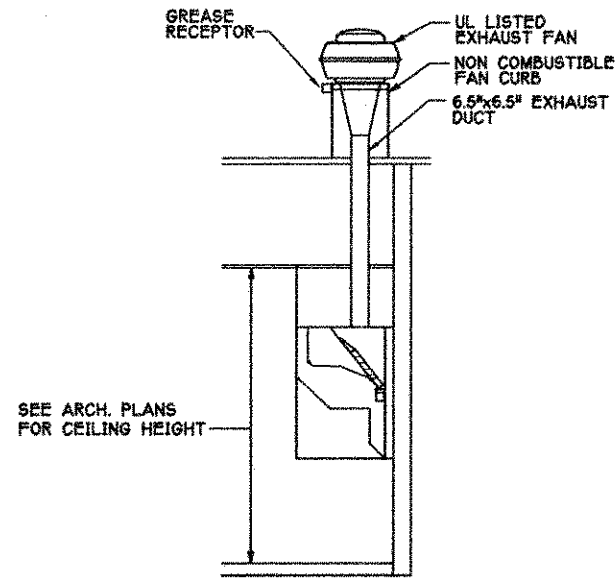
**LEGEND**

SYMBOL	DESCRIPTION
EF-1	EXHAUST FAN MARK
HOOD-1	EXHAUST HOOD MARK
FS	FIRE SUPPRESSION
□	EXHAUST AIR



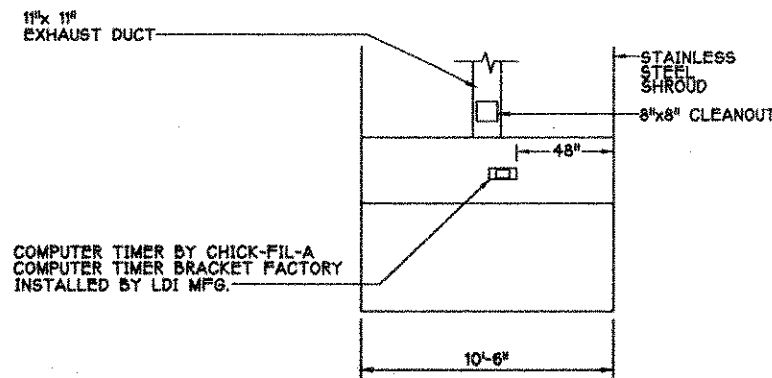
**SECTION "A-A"**

**ELEVATION DETAIL**  
SCALE: NONE



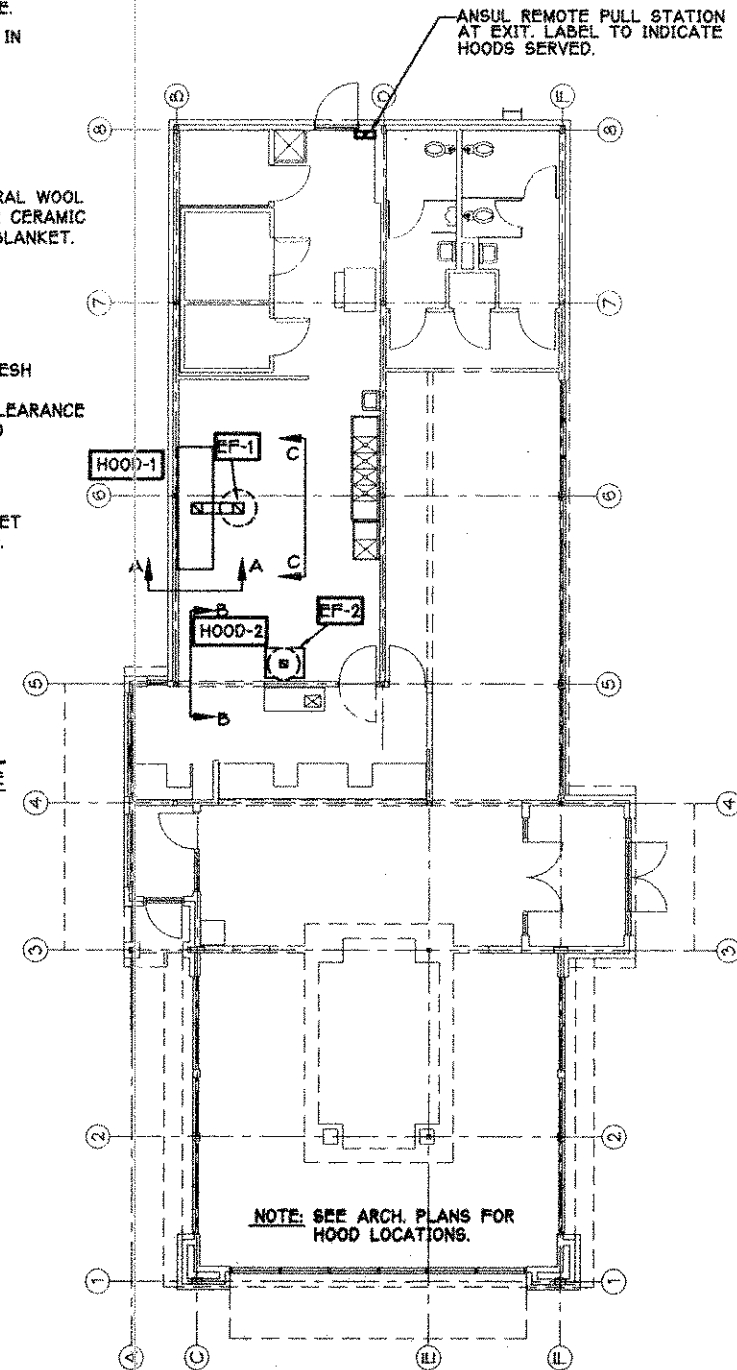
**SECTION "B-B"**

**ELEVATION DETAIL**  
SCALE: NONE



**SECTION "C-C"**

**COMPUTER TIMER MOUNTING**  
SCALE: NONE



**HOOD LAYOUT**  
SCALE: 1/8"=1'-0"

Series 100  
5200 Buffington Road  
Atlanta, Georgia 30349-2998  
Telephone 404-765-8000



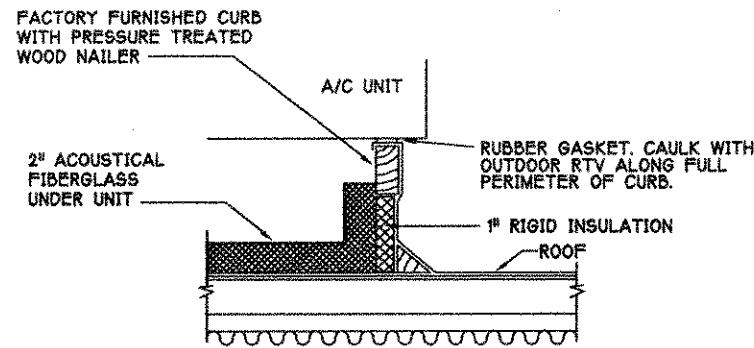
Cleveland Avenue  
East Point, Georgia

Edition Date: December 1, 1996  
Project Date: December 17, 1996

Date Revision

Sheet Title Hood Details

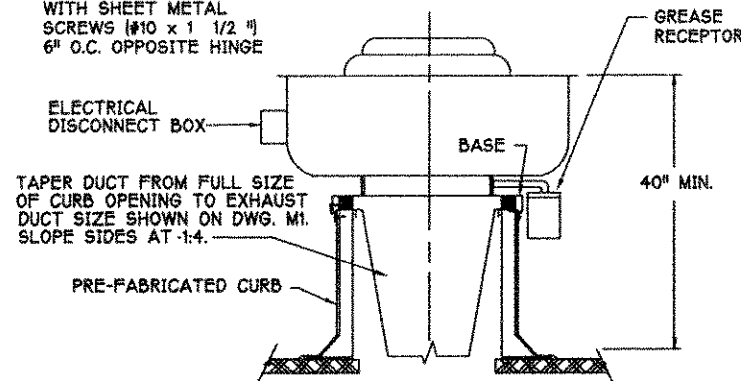
M2



**ROOF CURB DETAIL**

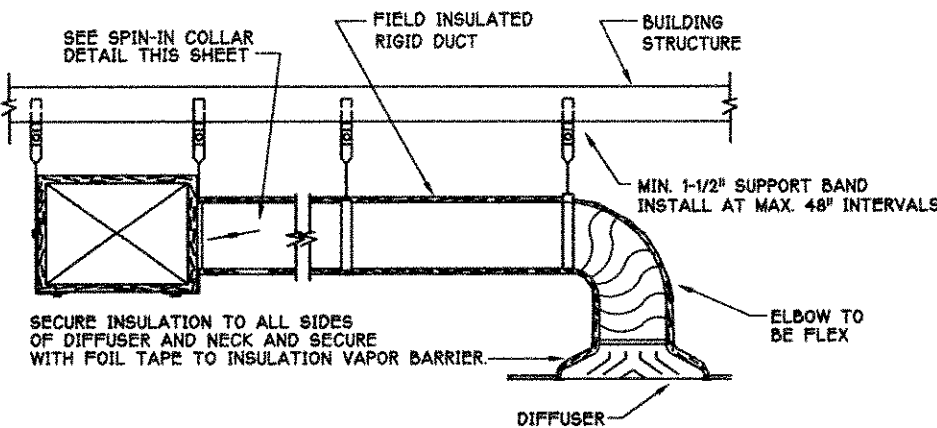
SCALE: \_\_\_\_\_ NONE

NOTE:  
SECURE FAN TO CURB WITH SHEET METAL SCREWS (#10 x 1 1/2") 6" O.C. OPPOSITE HINGE



**KITCHEN EXHAUST FAN DETAIL**

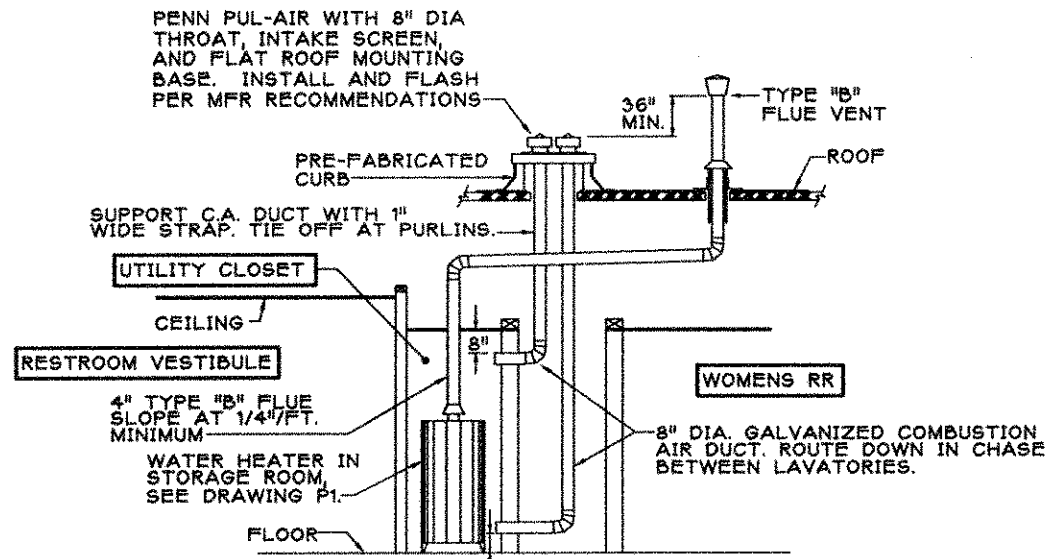
SCALE: \_\_\_\_\_ NONE



NOTE: ABSOLUTELY NO HORIZONTAL RUNS OF FLEX DUCT

**DUCT CONNECTIONS TO CEILING DIFFUSER DETAIL**

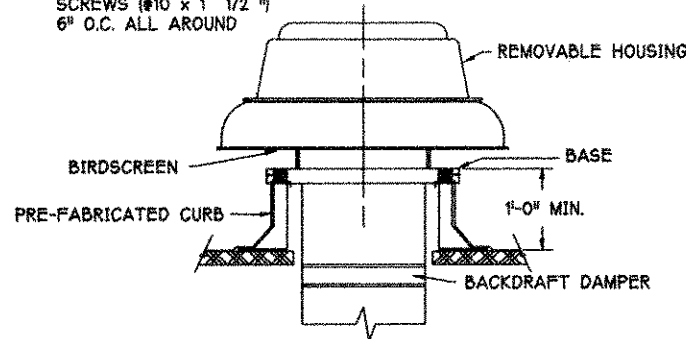
SCALE: \_\_\_\_\_ NONE



**FLUE AND COMBUSTION AIR INTAKE DETAIL**

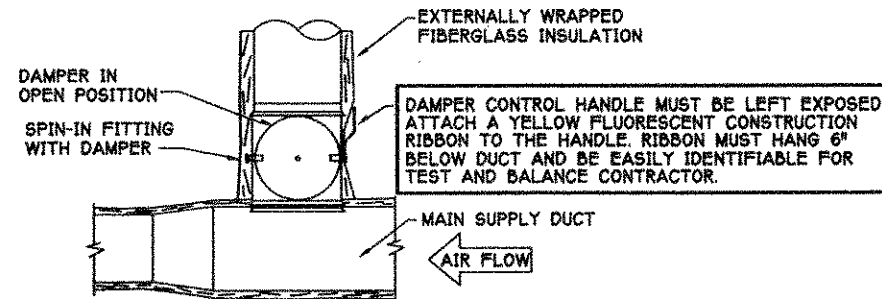
SCALE: \_\_\_\_\_ NONE

NOTE:  
SECURE FAN TO CURB WITH SHEET METAL SCREWS (#10 x 1 1/2") 6" O.C. ALL AROUND



**RESTROOM EXHAUST FAN DETAIL**

SCALE: \_\_\_\_\_ NONE



**SPIN-IN COLLAR DETAIL**

SCALE: \_\_\_\_\_ NONE

**ROOFTOP GAS FIRED HVAC UNIT SCHEDULE**

IDENTIFICATION	AC/1	AC/2	AC/3	AC/4
MANUFACTURER	CARRIER	CARRIER	CARRIER	CARRIER
MODEL NO.	48JD014	48JD008	48JD008	48JD006
CAPACITY TOTAL / SENS.	147.7/109.0	93.5/69.3	81.4/64.0	62.5/43.8
<b>FAN SECTION</b>				
CFM SUPPLY	4,550	3,200	2,600	1,800
CFM O.A.	861	640	640	360
ESP - IN WG.	.60	.60	.60	.60
<b>HEATING SECTION:</b>				
FUEL	NATURAL GAS	NATURAL GAS	NATURAL GAS	NATURAL GAS
MBH INPUT / OUTPUT	224/184	125/102	125/102	72.0/59.0
FILTER	THROWAWAY	THROWAWAY	THROWAWAY	THROWAWAY
<b>ACCESSORIES</b>				
AUTOMATIC OUTSIDE AIR DAMPER (0-100%), ROOF CURB, FACTORY INSTALLED NON-FUSED DISCONNECT, LOW AMBIENT OPERATION KIT, COIL HAIL GUARD (FL, TX, OK ONLY), ANTI-SHORT CYCLE TIMER.				
<b>REMARKS</b>				
1. SEE DWG. M-4 FOR CONTROLS. 2. SEE DWG. M-4 FOR SMOKE DETECTORS. 3. SEE SEQUENCE OF OPERATION ON M-4. 4. CONTRACTOR SHALL REFER TO ROOF FRAMING PLAN FOR EXACT A/C UNIT LOCATIONS. 5. A/C UNIT OUTSIDE AIR INTAKES SHALL BE LOCATED A MINIMUM OF 10'-0" FROM ANY FLUE OR EXHAUST FAN. 6. AC2 PROVIDED WITH 115V GFI FACTORY WIRED SERVICE OUTLET. 7. SEE ELECTRICAL DRAWINGS FOR ELECTRICAL CHARACTERISTICS PRIOR TO ORDERING EQUIPMENT. 8. PROVIDE BOTTOM POWER ENTRY FEATURE.				

**FAN SCHEDULE**

FAN IDENTIFICATION	EF-1	EF-2	EF-3
MANUFACTURER	LOREN-COOK	LOREN-COOK	LOREN-COOK
MODEL NUMBER	165VH65	150VH4B	ACED100C15DL
AREA SERVED	HOOD-1	HOOD-2	RESTROOMS
TYPE	UPBLAST EXHAUSTER	UPBLAST EXHAUSTER	ROOFTOP EXHAUSTER
CFM	1515	500	460
E.S.P.	1.25	1.25	.25
MOTOR H.P.	3/4	1/3	1/8
<b>ACCESSORIES</b>			
	NFPA ROOF CURB SAFETY DISCONNECT FACTORY HINGED ACCESS GREASE RECEPTOR	NFPA ROOF CURB SAFETY DISCONNECT FACTORY HINGED ACCESS GREASE RECEPTOR	ROOF CURB SAFETY DISCONNECT BIRDSCREEN BACKDRAFT DAMPER

**HOOD SCHEDULE**

IDENTIFICATION	HOOD-1	HOOD-2
SERVICE	KITCHEN	KITCHEN
MAKE-UP CFM	THRU A/C SYSTEMS	THRU A/C SYSTEMS
EXHAUST CFM	1515	500
<b>OVERALL HOOD DIMENSIONS</b>		
LENGTH	10'-6"	40"
WIDTH	31"	31"
HEIGHT	45"	45"
<b>MATERIAL &amp; FINISH</b>		
	STAINLESS STEEL	STAINLESS STEEL
MANUFACTURER	LDI MFG. CO.	LDI MFG. CO.
MODEL NO.	ELS-M	ELS-M
TYPE	WALL BACKSHELF	WALL BACKSHELF
EXHAUST DUCT	11"x11"	6.5"x6.5"
COLLAR SIZE		
<b>ACCESSORIES</b>		
	SEE LDI MFG. CO. SHOP DRAWINGS	
<b>REMARKS</b>		
HOOD MAKE-UP PROVIDED THRU A/C UNITS. SEE SEQUENCE OF OPERATION ON M-4 AND AIR BALANCE SCHEDULE ON SHEET M1. HOOD AND SHROUD FURNISHED BY OWNER. INSTALLED BY CONTRACTOR.		

Series 100  
5200 Buffington Road  
Atlanta, Georgia 30349-2998  
Telephone 404-765-8000



Cleveland Avenue  
East Point, Georgia

Edition Date: December 1, 1996  
Project Date: December 17, 1996

# Date Revision

Sheet Title Mechanical Schedules & Details

# MECHANICAL SPECIFICATIONS

## PART I GENERAL

- FURNISH ALL MATERIALS, LABOR, TOOLS, TRANSPORTATION AND INCIDENTALS TO COMPLETE IN EVERY DETAIL, AND LEAVE IN WORKING ORDER ALL ITEMS CALLED FOR HEREIN OR SHOWN ON THE ACCOMPANYING DRAWINGS.
- IT IS THE RESPONSIBILITY OF CONTRACTOR TO READ ALL SPECIFICATION AND CONSULT ALL DRAWINGS WHICH MAY AFFECT THE INSTALLATION AND COORDINATION OF HIS WORK WITH OTHER TRADES. CONTRACTOR SHALL COORDINATE AND MAKE MINOR ADJUSTMENTS IN LOCATION OF EQUIPMENT AND MATERIALS AS NECESSARY TO SECURE COORDINATION.
- LAYOUT SHOWN IN DRAWINGS IS BASED ON A PARTICULAR MAKE OF EQUIPMENT. CONTRACTOR SHALL PROVIDE SIX SUBMITTAL SETS OF SHOP DRAWINGS TO ENGINEER FOR APPROVAL PRIOR TO STARTING WORK. IF ANOTHER MAKE OF EQUIPMENT IS DESIRED, THESE SUBMITTALS SHALL ALSO SHOW ALL REQUIRED MODIFICATIONS AND CHANGES, INCLUDING THOSE INVOLVING OTHER TRADES, AND COST THEREOF SHALL BE INCLUDED IN HIS BID. CONTRACTOR MUST RECEIVE APPROVED SUBMITTAL COPY, SIGNED BY ENGINEER BEFORE PROCEEDING WITH ANY MODIFICATIONS. WORK INSTALLED USING UNAPPROVED SUBSTITUTIONS SHALL BE REPLACED AT NO ADDITIONAL COST TO THE OWNER.
- CONTRACTOR SHALL VISIT THE SITE AND FULLY INFORM HIMSELF CONCERNING ALL CONDITIONS AFFECTING SCOPE OF WORK. FAILURE TO DO SO SHALL NOT RELIEVE CONTRACTOR OF ANY RESPONSIBILITY IN THE PERFORMANCE OF HIS WORK. ALL WORKMANSHIP SHALL BE OF THE HIGHEST QUALITY IN ACCORDANCE WITH THE BEST PRACTICES OF THE TRADE BY CRAFTSMEN SKILLED IN THIS PARTICULAR WORK. CONTRACTOR SHALL FILE ALL DRAWINGS, PAY ALL FEES AND OBTAIN ALL PERMITS AND CERTIFICATES OF INSPECTION RELATIVE TO THIS WORK.
- COMPLETED INSTALLATION SHALL CONFORM TO ALL APPLICABLE FEDERAL, STATE AND LOCAL CODES AND ORDINANCES, INCLUDING BUT NOT LIMITED TO THE LATEST APPROVED EDITIONS OF NFPA-96, NFPA-90A, NFPA-64, SMACNA AND ASHRAE 62-89.
- SYSTEM LAYOUT IS SCHEMATIC AND EXACT LOCATIONS SHALL BE DETERMINED BY STRUCTURAL CONDITIONS, COORDINATION WITH OTHER TRADES, COORDINATION WITH FINISHES AND OTHER CONDITIONS. STRUCTURAL SUPPORTS SHALL NOT BE CUT OR ALTERED TO ASSURE FIT OF HVAC SYSTEM.
- CONTRACTOR SHALL BE RESPONSIBLE FOR ALL DEFECTS, REPAIRS AND REPLACEMENTS IN MATERIALS AND WORKMANSHIP FOR A PERIOD OF ONE (1) YEAR AFTER FINAL PAYMENT IS APPROVED. CONTRACTOR SHALL HONOR FACTORY WARRANTIES ON ALL EQUIPMENT PROVIDED AS PART OF THIS SYSTEM. COMPRESSORS SHALL BE PROVIDED AS PART OF THIS SYSTEM. COMPRESSORS SHALL BE PROVIDED WITH A MINIMUM OF FIVE (5) YEAR FULL WARRANTY.
- UPON COMPLETION OF PROJECT, ALL SYSTEM EQUIPMENT AND MATERIALS SHALL BE IN NEW, CLEAN CONDITION WITH ALL DAMAGE RESTORED TO CONDITION ACCEPTABLE TO THE OWNERS REPRESENTATIVE. ALL EQUIPMENT, COMPONENTS AND DUCTWORK SHALL BE INSPECTED AND THOROUGHLY CLEANED, READY FOR USE. AT COMPLETION OF JOB, ALL MISCELLANEOUS TOOLS, SCAFFOLDING, SURPLUS MATERIALS, RUBBISH AND DEBRIS SHALL BE REMOVED BY CONTRACTOR.
- IF HVAC EQUIPMENT IS USED FOR TEMPORARY HEATING, ETC., THE CONTRACTOR SHALL ASSUME THE RESPONSIBILITY FOR CLEANING COILS, ETC. FINAL PERMANENT CONNECTIONS OF SERVICES TO UNITS SHALL BE COMPLETE PRIOR TO ANY START-UP OF EQUIPMENT. PROVIDE NEW FILTERS AT WORK COMPLETION.
- CONTRACTOR SHALL SUBMIT THREE (3) SETS OF INSTRUCTION BOOKS, INCLUDING INSTALLATION, OPERATION AND MAINTENANCE INSTRUCTIONS, PAMPHLETS OR BROCHURES AND ALL EQUIPMENT WARRANTIES OBTAINED FROM EACH MANUFACTURER OF EQUIPMENT TO OWNER'S REPRESENTATIVE.
- DRAWINGS ARE DIAGRAMMATIC AND SHALL NOT BE SCALED FOR EXACT SIZES OR LOCATIONS. THEY ARE NOT INTENDED TO DISCLOSE ABSOLUTE OR UNCONDITIONAL KNOWLEDGE OF ACTUAL FIELD CONDITIONS.

## PART II PRODUCTS

### 1. HEATING AND COOLING EQUIPMENT

- FURNISH AND INSTALL ROOFTOP SINGLE PACKAGE COMBINATION ELECTRIC COOLING AND NATURAL GAS FIRED HEATING UNITS BY CARRIER AS SHOWN ON DRAWINGS. EQUIPMENT SHALL BE ARI CERTIFIED AND A.G.A. AND U.L. LISTED.
- UNIT SHALL BE FACTORY ASSEMBLED, TESTED AND HAVE COMPLETE REFRIGERANT - 22 CHARGE, READY TO OPERATE. ALL TUBING JOINTS SHALL BE BRAZED. COILS SHALL BE MINIMUM OF 3-ROWS DEEP.
- FAN SHALL BE STATICALLY AND DYNAMICALLY BALANCED, DOUBLE INLET, FORWARD CURVED BELT DRIVEN BLOWER CAPABLE OF DELIVERING DESIGN CFM. FAN SHALL BE QUIET IN OPERATION AND INTERNALLY VIBRATION ISOLATED.
- FILTERS SHALL BE THROW AWAY TYPE, FARR 30/30 2" OR EQUAL. A CLEAN SET OF REPLACEMENT FILTERS SHALL BE PROVIDED AND INSTALLED BY CONTRACTOR AFTER SUCCESSFUL START-UP OF EQUIPMENT AND AGAIN PRIOR TO OPENING.

- ACCESSORIES SHALL INCLUDE TIME DELAY RELAYS TO PREVENT COMPRESSOR SHORT CYCLING; LOW AND HIGH PRESSURE SAFETY, CRANK CASE HEATER, OVERCURRENT AND OVERTEMPERATURE SAFETY, COMPRESSOR VIBRATION ISOLATORS, FILTER DRIERS, AND REFRIGERANT SERVICE VALVES. UNIT SHALL BE DOWN DISCHARGE AS INDICATED ON THE DRAWINGS.
- UNITS SHALL HAVE MOTORIZED TWO POSITION OUTSIDE AIR INTAKE DAMPERS.
- THE UNIT HEAT EXCHANGERS SHALL BE STEEL WITH ALUMINIZED STEEL COATING. HEATING CONTROLS SHALL CONSIST OF REDUNDANT GAS VALVES, INTERMITTENT PILOT WITH ELECTRONIC SPARK OR HOT PLATE IGNITION SYSTEM, COMBUSTION/EXHAUST FAN PROTECTED BY CENTRIFUGAL SWITCHES, HEAT LIMIT SWITCHES, TIME-DELAY RELAY, FLAME, AND PILOT SENSORS.

### 2. GENERAL EXHAUST AND GREASE HOOD FANS

- FANS SHALL BE EQUAL TO THE MAKE AND MODEL(S) INDICATED AND SHALL BE LOCATED AS SHOWN ON DRAWINGS. FANS SHALL BE PENN, ACME, LOREN COOK, JENN-AIR, OR GREENHECK. RESTROOM EXHAUST FAN SHALL BE MOUNTED ON INSULATED CURB, MINIMUM 1'-0" HIGH. REFER TO SHEET M1 FOR LOCATIONS. ALL FANS SHALL BE U.L. LISTED AND A.C.M.A. CERTIFIED.

### 3. ROOF CURBS

- EQUIPMENT MANUFACTURER SHALL PROVIDE ALL ROOF CURBS FOR ROOF MOUNTED EQUIPMENT.
- CURB CONSTRUCTION AND HEIGHT FOR THE HOOD FANS SHALL CONFORM TO THE REQUIREMENTS OF NFPA 96.

### 4. DUCTWORK & INSTALLATION

- ALL DUCTWORK SHALL BE SHEET METAL. CONSTRUCTION STANDARDS AND RECOMMENDATIONS OF SMACNA SHALL BE FOLLOWED WITH RESPECT TO CONSTRUCTION, INSTALLATION AND SUPPORT OF ALL DUCTWORK, EXCEPT MINIMUM GAUGE SHALL BE 24 GAUGE. ALL JOINTS SHALL BE SEALED WITH APPROVED DUCT SEALANT APPROVED FOR INTENDED USE. STANDARD DUCT TAPE IS NOT ACCEPTABLE. DUCT DIMENSIONS SHOWN ARE INSIDE CLEAR DIMENSIONS.
- ALL SUPPLY DUCTS SHALL BE EXTERNALLY INSULATED WITH 2" THICK FIBERGLASS FLEXIBLE DUCT INSULATION WITH VAPOR BARRIER. RETURN DUCTS SHALL BE LINED WITH 1-1/2" FIBERGLASS DUCT LINER. MANVILLE, OWENS CORNING, OR KNAUF.
- TRUNK DUCTS SHALL BE ISOLATED FROM UNIT VIBRATION WITH THE USE OF NFPA AND U.L. APPROVED FLEXIBLE CONNECTORS IN BOTH SUPPLY AND RETURN.
- ALL ROUND DUCT SHALL BE SIZED AS SHOWN ON DRAWINGS. INSULATED FLEXIBLE DUCT MAY BE UTILIZED FOR CONNECTION TO GRILLES AND REGISTERS ONLY IN MAXIMUM LENGTHS OF 4'-0". NO EXCEPTIONS. CONSTRUCTION OF FLEXIBLE SHALL INCLUDE SPIRAL METAL CORE W/ 1" FIBERGLASS INSULATION WITH VAPOR BARRIER U.L. APPROVED & VAPOR PERMEABILITY.
- SINGLE THICKNESS TURNING VANES SHALL BE INSTALLED AT 90 DEGREE TURNS IN LOW PRESSURE MAIN SUPPLY DUCTS.

### 5. AIR DEVICES

- AIR DEVICES SHALL BE TITUS OR METALAIRE FRAME TYPE SUITABLE FOR CEILING FINISH. ALL CEILING DIFFUSERS WITHIN A SPACE SHALL HAVE UNIFORM FACE DIMENSIONS UNLESS OTHERWISE NOTED. FURNISH AND INSTALL ACCESS DOORS IN GYPSUM CEILINGS FOR DAMPER ACCESS. PAINT ACCESS DOOR TO MATCH CEILING FINISH.
- CEILING DIFFUSERS SHALL BE AS FOLLOWS:
  - ALL AREAS EXCEPT KITCHENS & OFFICE - TITUS PERFORATED FACE MODEL PAS-AA ALUMINUM OFF-WHITE WITH PATTERN CONTROLLERS. SEE REFLECTED CEILING FOR BORDER TYPE AND FACE SIZE.
  - KITCHEN AREA - TITUS PERFORATED FACE MODEL PAS-AA ALUMINUM OFF-WHITE WITH PATTERN CONTROLLERS REMOVED. SEE REFLECTED CEILING FOR BORDER TYPE AND FACE SIZE.
  - OFFICE - TITUS PERFORATED FACE MODEL PAS-AA ALUMINUM OFF-WHITE WITH PATTERN CONTROLLERS REMOVED. SEE REFLECTED CEILING FOR BORDER TYPE AND FACE SIZE.
- RETURN & EXHAUST GRILLES
  - EXHAUST GRILLES TO BE TITUS 50F ALUMINUM OFF-WHITE FINISH. SEE REFLECTED CEILING FOR BORDER TYPE AND FACE SIZE.
  - RETURN ALL AREAS - TITUS ALUMINUM OFF-WHITE FINISH PERFORATED FACE MODEL PAS-AA WITH PATTERN CONTROLLERS REMOVED. SEE REFLECTED CEILING FOR BORDER TYPE AND FACE SIZE.

### 6. PAINTING

- ALL EQUIPMENT LOCATED OUTDOORS SHALL HAVE ANY SCRATCHES TOUCHED UP WITH PAINT THE SAME TYPE AND COLOR AS UNIT AS SUPPLIED BY THE MANUFACTURER.

### 7. CONTROLS

- SYSTEMS SHALL BE COMPLETE WITH CONNECTIONS TO CFA-500 TEMPERATURE CONTROL PANEL AS MANUFACTURED BY SUNCOAST ENVIRONMENTAL CONTROLS (S.E.C.) (PH: 813-544-6679). THE PANEL IS PROVIDED AND INSTALLED BY ELECTRICAL.
- INSTALL A SMOKE DETECTOR IN THE RETURN AIR DUCT OF EACH AIR CONDITIONING UNIT HANDLING 2000 CFM OR MORE TO STOP THE INDOOR FAN AND CLOSE THE OUTSIDE AIR DAMPER IN THE EVENT OF EXCESSIVE TEMPERATURE OR SMOKE. IF REQUIRED BY LOCAL AUTHORITY HAVING JURISDICTION, INSTALL A FIRESTAT IN THE RETURN AIR DUCT OF EACH PIECE OF AIR CONDITIONING EQUIPMENT HANDLING 2000 CFM OR MORE TO STOP THE INDOOR FAN AND CLOSE THE OUTSIDE AIR DAMPER WHEN HEAT WITHIN THE DUCT IS IN EXCESS OF 135 DEGREES FAHRENHEIT. SMOKE DETECTOR AND/OR FIRESTAT SHALL BE LOCATED PRIOR TO ANY EXHAUST FROM THE BUILDING OR MIXING WITH FRESH AIR MAKE-UP. UPON DETECTION, THE SYSTEM SHALL NOT RESTART UNTIL THE DEVICE IS MANUALLY RESET. DEVICES SHALL BE LOCATED WHERE THEY CAN BE EASILY ACCESSED AND WHERE CLEAR OF FILTERS.
- SMOKE DETECTORS SHALL BE PROVIDED BY SUNCOAST ENVIRONMENTAL CONTROLS AND MOUNTED BY THE MECHANICAL CONTRACTORS. INSTALLATION BY MECHANICAL SHALL INCLUDE MOUNTING OF THE DEVICE AND ALL WIRING FROM THE DEVICE TO BOTH THE UNIT AND THE REMOTE TEST/RESET STATION. SMOKE DETECTOR SHALL BE POWERED FROM THE UNIT CONTROL TRANSFORMER. ELECTRICAL WILL PROVIDE A JUNCTION BOX IN THE WALL WITH 1/2" CONDUIT STUBBED UP ABOVE THE CEILING FOR EACH REMOTE TEST STATION AS SHOWN ON THE ELECTRICAL PLANS.
- FIRESTATS SHALL BE PROVIDED BY AND MOUNTED BY MECHANICAL CONTRACTOR. INSTALLATION BY MECHANICAL SHALL INCLUDE MOUNTING OF THE DEVICE AND ALL WIRING FROM THE DEVICE TO THE UNIT.
- SMOKE DETECTORS SHALL BE EQUIVALENT TO AIR PRODUCTS AND CONTROLS RW SERIES IONIZATION TYPE 24V, MODEL RW-024-N. PROVIDE SEC REMOTE TEST STATION MODEL AP-1 WITH POWER LED, ALARM LED, 90dB HORN AND TEST/RESET BUTTON. FIRESTATS SHALL BE EQUIVALENT TO HONEYWELL MODEL #L4029E HIGH LIMIT CONTROLLER.
- THE RESTROOM FAN SHALL BE INTERLOCKED TO THE LIGHTS SERVING THE MEN AND WOMEN'S RESTROOMS. ALL WIRING AND NECESSARY RELAYS SHALL BE BY ELECTRICAL. OPERATION OF THE LIGHTS SHALL CAUSE THE FAN TO ENERGIZE.
- THE ROOFTOP UNIT THERMOSTATS ARE INTEGRATED INTO THE TEMPERATURE PANEL AND ARE BY S.E.C. THE REMOTE TEMPERATURE SENSORS ARE PROVIDED BY S.E.C., AND ARE INSTALLED AND WIRED TO THE PANEL BY THE MECHANICAL CONTRACTOR. WIRING FROM THE ROOFTOP UNIT CONTROLS SECTION TO THE TEMPERATURE CONTROL PANEL SHALL BE BY THE MECHANICAL CONTRACTOR.
- MECHANICAL CONTRACTOR SHALL INSTALL CONTROL WIRING IN 1/2" CONDUIT WHERE REQUIRED BY CODE. WHERE NOT REQUIRED TO BE IN CONDUIT, ALL WIRING SHALL BE RUN PARALLEL TO STRUCTURAL MEMBERS OR PERPENDICULAR WITH NO DIAGONAL ROUTING. ALL WIRING SHALL BE SECURED TO THE FRAMING TO PREVENT SAGGING IN RUNS. WIRING TO ROOFTOP UNITS SHALL BE ROUTED THROUGH THE FACTORY KNOCK-OUT IN THE UNIT BASE PAN. WIRING SHALL BE INSTALLED IN ACCORDANCE WITH LATEST EDITION OF NEC. DISCONNECTS AND POWER WIRING SHALL BE FURNISHED AND INSTALLED BY THE ELECTRICAL DIVISION. COORDINATE WITH ELECTRICAL.

### 8. SEQUENCE OF OPERATION:

- WHEN STORE IS OPEN, THE EXHAUST FANS AND ROOFTOP UNITS SHALL OPERATE THRU CONTROL OF THE SWITCHES AND SENSORS SHOWN ON THE MECHANICAL AND ELECTRICAL PLANS. THE ROOFTOP UNIT INDOOR FANS SHALL RUN CONTINUOUSLY AND THE OUTSIDE AIR DAMPERS SHALL REMAIN OPEN.
- WHEN STORE IS CLOSED, THE EXHAUST FANS SHALL BE SWITCHED OFF AND THE THERMOSTATS SHALL BEGIN NIGHT SET-BACK MODE. WIRING FOR CONTROL OF THE EXHAUST FANS IS BY ELECTRICAL. SEE ITEM 7, CONTROLS, FOR RESPONSIBILITIES WITH REGARD TO THERMOSTAT. THE OUTSIDE AIR DAMPERS AT THE ROOFTOP UNITS SHALL REMAIN CLOSED AT ALL TIMES DURING NIGHT SET-BACK MODE.
- HOOD EXHAUST FANS SHALL NOT BE CAPABLE OF OPERATION UNLESS SEC PANEL HAS BEEN PUT INTO "STORE OPEN" MODE.
- ACTUATION OF ANSUL SYSTEM SHALL STOP ALL ROOFTOP UNITS, CLOSE THE O.A. DAMPERS AND START THE GREASE HOOD EXHAUST FANS. ALL WIRING EXTERNAL TO ACCOMPLISH THIS IS BY ELECTRICAL.

### PART III EXECUTION

- FURNISH AND INSTALL SYSTEM IN ACCORDANCE WITH REFERENCED STANDARDS, APPLICABLE CODES, MANUFACTURERS RECOMMENDATIONS AND AS INDICATED ON DRAWINGS.
- OWNER SHALL TEST AND BALANCE MECHANICAL SYSTEM IN ACCORDANCE WITH AABC TO ASSURE CONFORMANCE WITH DESIGN. CONTRACTOR WILL MAKE CORRECTIONS BASED ON WRITTEN REPORT.
- CONTRACTOR SHALL INSTRUCT THE OWNER'S REPRESENTATIVE IN ALL MATTERS PERTAINING TO THE PROPER MAINTENANCE OF EQUIPMENT FURNISHED UNDER THIS CONTRACT THROUGH DEMONSTRATION AND EXPLANATION OF OPERATING & MAINTENANCE MANUALS.
- CONTRACTOR SHALL PROVIDE A "SAMPLE MAINTENANCE PROPOSAL" TO THE OWNER'S REPRESENTATIVE IN ALL MATTERS PERTAINING TO THE PROPER MAINTENANCE OF EQUIPMENT FURNISHED UNDER THIS CONTRACT.

Series 100

5200 Buffington Road  
Atlanta, Georgia 30349-2998  
Telephone 404-765-8000

*Chick-fil-e*

Cleveland Avenue  
East Point, Georgia

Sheet Title Mechanical Specifications

Revision  
Date  
Project Date: December 17, 1996  
Edition Date: December 1, 1996

M4