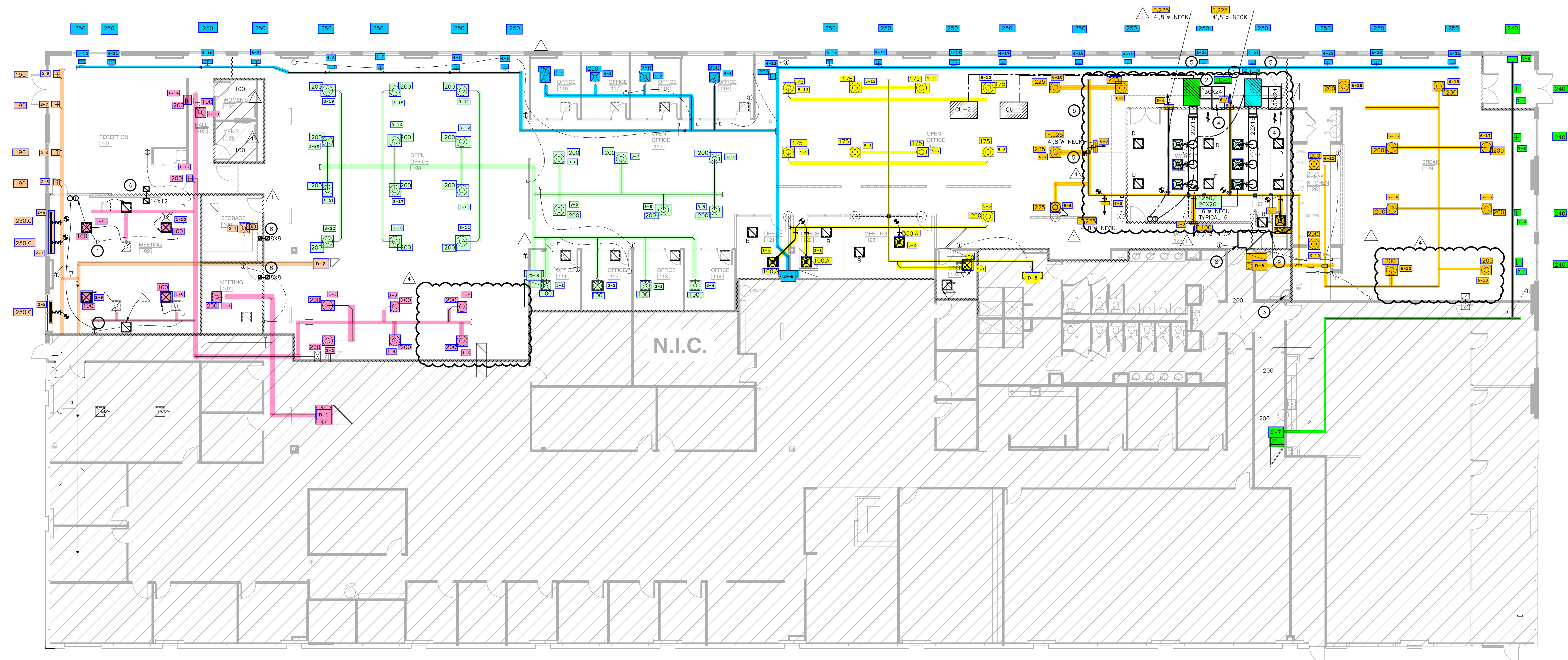




**NOTES BY SYMBOL** ☹ :

1. RELOCATE EXISTING THERMOSTAT TO NEW LOCATION AS SHOWN ON PLAN. CONFIRM THAT THE THERMOSTATS ARE ASSOCIATED WITH THE RTU AS SHOWN ON THE DRAWING BEFORE RELOCATING AND ARE IN WORKING ORDER.
2. AC UNIT TO BE SUSPENDED FROM STRUCTURE WITH ISOLATION SPRINGS. REFER TO PLUMBING SHEET FOR WATER REQUIREMENTS. PROVIDE A GALVANIZED SHEET METAL SECONDARY DRAIN PAN THAT IS A MINIMUM OF 3" LARGER (ON EACH SIDE) THAN ANY DIMENSION OF THE UNIT AND MUST EXTEND UNDER THE CONDENSATE PUMPS.
3. ROUTE ALL CONDENSATE FROM AC UNITS TO MOP SINK.
4. PROVIDE A FULL SIZED INTERNALLY LINED OUTLET AND INLET DUCT FROM EVAPORATOR AS SHOWN ON DRAWINGS.
5. HUMIDIFIER CONNECTION. PROVIDE 1/2" COLD WATER WITH SHUTOFF AND SOLENOID VALVE AND EXTEND 1/4" COPPER TUBING TO AHU. PROVIDE REDUCED PRESSURE ZONE ASSEMBLY (RPZ) EQUAL TO WAITS 009 SERIES. EXTEND WATER LINE TO NEAREST DOMESTIC COLD WATER LINE 3/4" OR LARGER.
6. PROVIDE ACOUSTICALLY LINED RETURN AIR BOOT THRU WALL TO DECK AS HIGH AS POSSIBLE ABOVE CEILING WITH INLET ELBOW AND OUTLET 90° ELBOW FACING UPWARD. SIZE PER PLANS. REFER TO DETAIL SHEET M0.01 FOR MORE INFORMATION.
7. ALL OUTDOOR CONDENSING UNITS TO BE LOCATED ON ROOF. EXACT LOCATION TO BE COORDINATED WITH BUILDING ENGINEER AND CONTRACTOR. LENGTH OF PIPE MUST NOT EXCEED MANUFACTURER'S SPECIFICATIONS.
8. EXTEND EXISTING RETURN DUCT SIZE BEYOND NEW WALLS TO DECK.
9. ENSURE THE RETURN AIR CAN ESCAPE THE PLENUM AND THE WALLS TO DECK DO NOT ENCLOSE THIS ROOM.



① LEVEL 1 MECHANICAL PLAN  
 SCALE: 1/8"=1'-0"

REVISION SUMMARY:  
 • ROOMS REMOVED BY ARCHITECT HAVE BEEN RETURNED TO EXISTING CONDITIONS.  
 • REMOVED TWO AC UNITS- REVISED DUCT/DIFFUSER LAYOUT

3481 PLANO PARKWAY  
 OCEUS

3481 PLANO PARKWAY  
 SUITE #150  
 THE COLONY, TX 75056

NO.	REVISIONS	DATE
▲	TENANT COMMENTS	8/21/2023
▲	TENANT COMMENTS	10/25/2023
▲		
▲		
▲		

CLIENT REVIEW ISSUE DATE: 08/14/2023  
 LANDLORD REVIEW ISSUE DATE: 08/14/2023  
 BID ISSUE DATE: 08/21/2023

DRAWING TITLE:  
 LEVEL 01 MECHANICAL PLAN

DRAWING NUMBER:

**M2.01**

